



PART NO. 17629
Printed in U.S.A.
Price .35

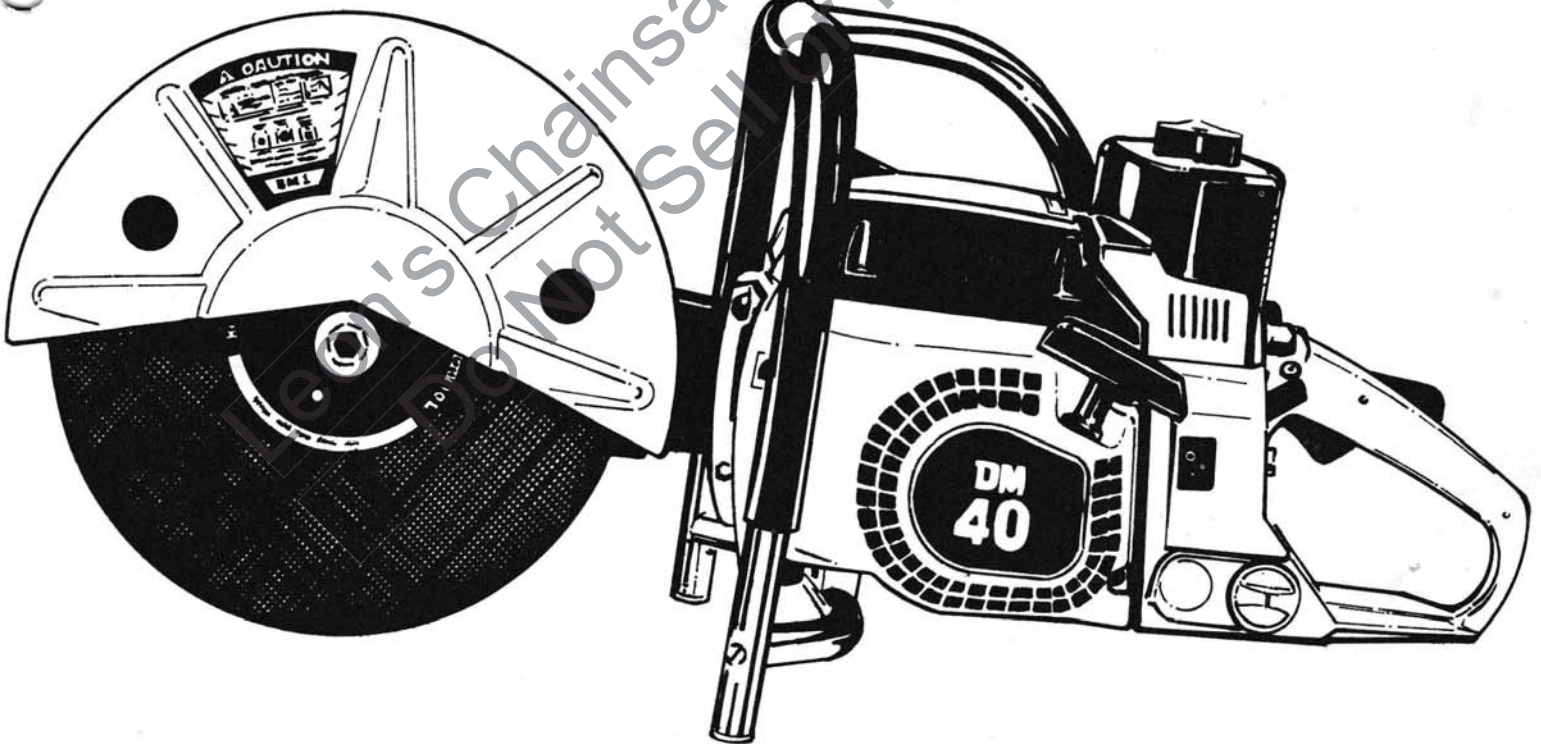
PARTS LIST

HOMELITE®

DM40

DM40-1

MULTI-PURPOSE SAW

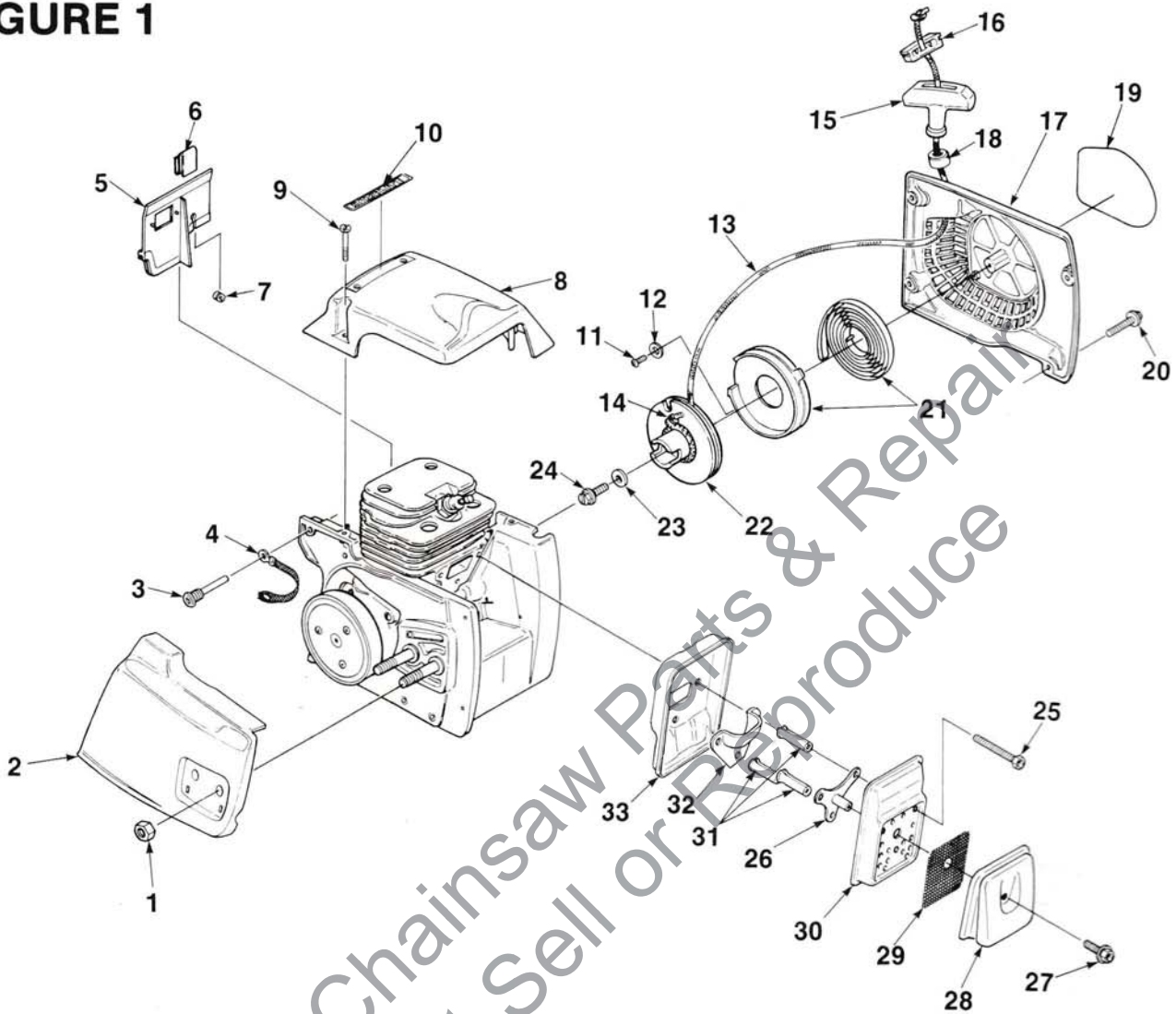


HOMELITE **TEXTRON**

Homelite Division of Textron Inc.

DM40

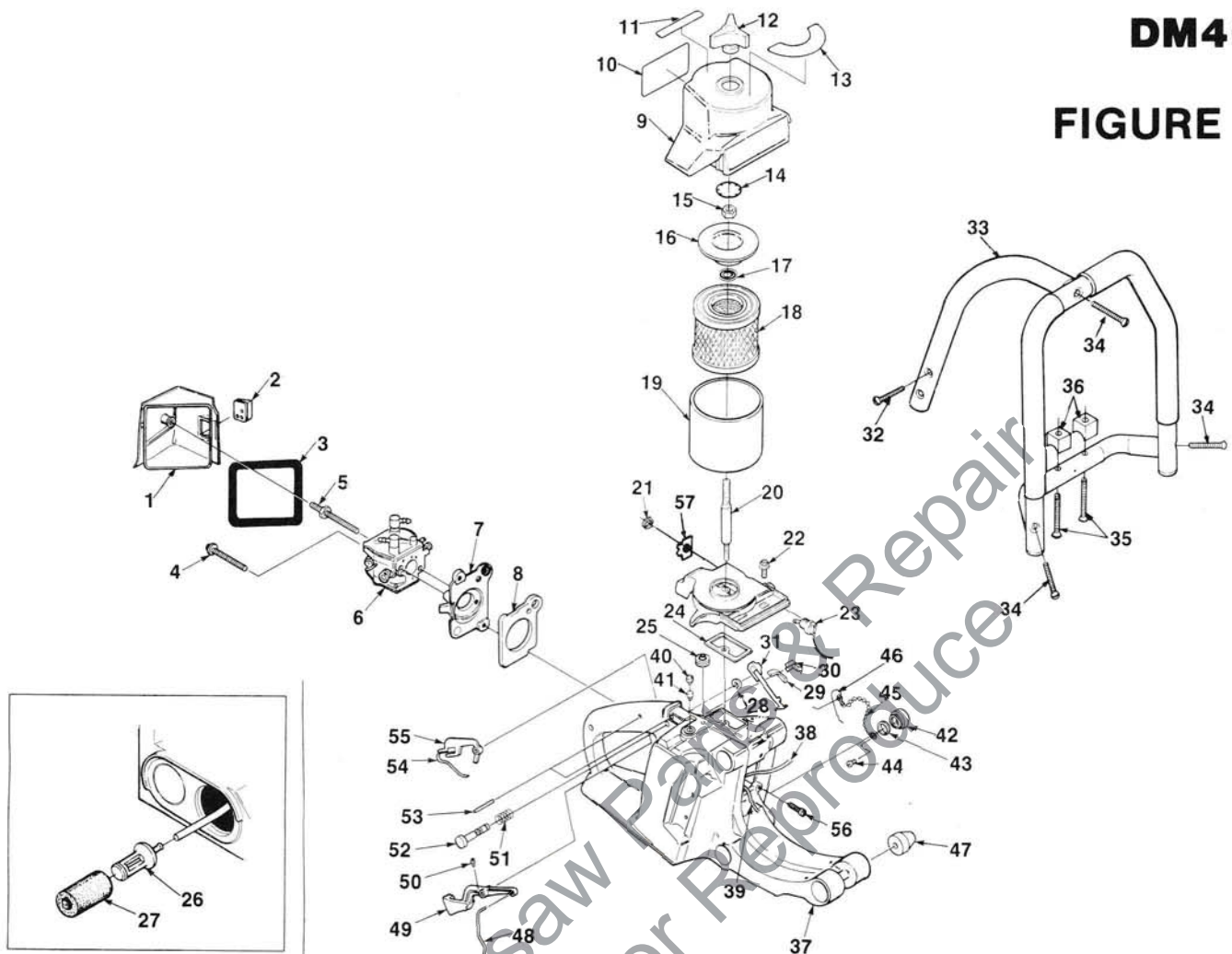
FIGURE 1



NO.	DESCRIPTION	PART NO.	QTY.	NO.	DESCRIPTION	PART NO.	QTY.
1	NUT- 3/8-16	81089-2	1	19	DECAL	48487	1
2	COVER- Drivecase	47869-3	1	20	SCREW	82298	4
3	PIN- Isolator	93367	6	21	RETAINER & SPRING	A-93370	1
4	STRAP- Ground	A-93459-A	1		Includes:		
5	DEFLECTOR- Air	A-96866	1		RETAINER- Spring	93365	1
	Includes:			22	CUP & PULLEY	A-93359	1
6	CLIP- Spring	96200	1	23	WASHER- Retaining	58763	1
7	GROMMET	93357	1	24	SCREW- Thd. retaining	93417	1
8	COVER- Cylinder	A-97762	1	25	SCREW- Mach. hex hd.	94129	3
	Includes:			26	SPACER & PLATE KIT	A-95062	1
9	SCREW- Cylinder cover	93397-A	1		Includes:		
10	LABEL- Homelite	96479	1	27	SCREW- 10-24 x .375	88048	1
11	SCREW- Plastite	82215	1	28	CAP- Muffler	A-93355-A	1
12	WASHER- Flat	84025	1	29	SCREEN- Spark arrestor	93344	1
13	ROPE- Starter	A-49137	1	30	COVER- Muffler	93348-1A	1
	Includes:			31	SPACER- Muffler	93983-03	3
14	WASHER	83060	1	32	PLATE- Stiffner	93349	1
15	GRIP- Starter	A-69962-B	1	33	BODY- Muffler	93347	1
	Includes:						
16	INSERT- Rope retaining	70018-A	1				
17	HOUSING- Starter	A-93168-A	1				
	Includes:						
18	BUSHING	67177	1				

ALWAYS FURNISH MODEL AND SERIAL NUMBER WHEN ORDERING PARTS.

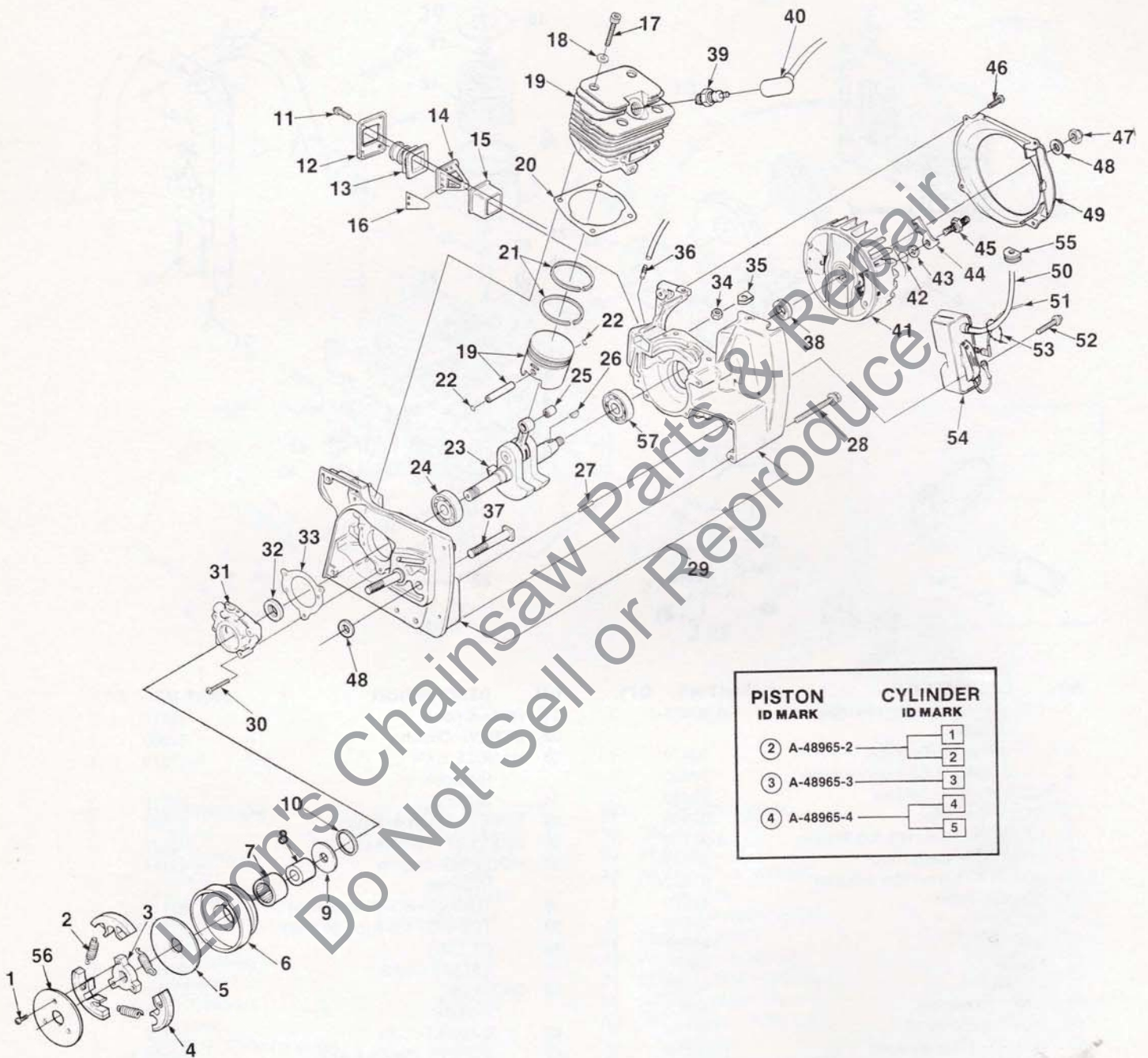
FIGURE 2



NO.	DESCRIPTION	PART NO.	QTY.	NO.	DESCRIPTION	PART NO.	QTY.
1	COVER- Carburetor chamber Includes:	A-93431-1	1	31	ROD- Choke	93372	1
2	GROMMET- Hi-Lo	93470	1	32	SCREW- Oval hd.	82389	2
3	GASKET- Carburetor cover	97620	1	33	HANDLE BAR Includes:	A-47873	1
4	SCREW- Hex sems hd.	93460	1	34	SCREW	82378	3
5	STUD- Shoulder	93468	1	35	SCREW- Mach oval hd.	82494	2
6	CARBURETOR (WS-22) Walbro	A-97102	1	36	BRACKET- Handle bar	93427	2
7	ADAPTOR- Carburetor	97623-1	1	37	HOUSING- Engine Includes:	A-49144	1
8	GASKET- Carburetor adaptor	97622-A	1	38	TUBING- 8 3/4" (fuel line)	93112-32	1
9	COVER- Filter	47870	1	39	TUBING- 4 3/4 (pulse line)	93157-19	1
10	DECAL	48856	1	40	FILTER-	93410	1
11	DECAL	48857	1	41	VALVE- Check	69451	1
12	KNOB	46076	1	42	CAP- Fuel Includes:	A-97799	1
13	DECAL	48855	1	43	GASKET- Cap	93422	1
14	RING- Retaining	46072	1	44	SCREW- Plastic X-slot	82256-A	1
15	NUT- Hex 5/16-18	81196	1	45	CHAIN- Bead	69502	1
16	COVER- Filter element	46786	1	46	KEEPER- Cap	96535	1
17	WASHER	46787	1	47	ISOLATOR	49136	6
18	ELEMENT- Air filter	47867	1	48	ROD- Throttle	93371	1
19	FOAM- Air filter	49143	1	49	TRIGGER- Throttle Includes:	A-93374-A	1
20	STUD- Threaded	47865	1	50	SCREW	82373	1
21	NUT- Hex	72084-A1	1	51	SPRING- Compression	93376	1
22	SCREW	88050	1	52	PIN- Throttle lock	93375	1
23	SWITCH & LEAD	A-97837	1	53	PIN- Trigger	68545	1
24	GASKET	48821	1	54	SPRING- Flat	93386	1
25	GROMMET & "O" RING ASSEMBLY	A-49135	1	55	LOCK- Trigger	93385	1
26	FUEL FILTER Includes:	A-97700	1	56	SCREW- 8-32 x 1/2	80022	3
27	ELEMENT- Felt filter	59253-1A	1	57	PLATE- Indicating	95231	1
28	RING- Retaining	93377	1				
29	RETAINER- Choke	93381	1				
30	SEAL- Choke rod	48878	1				

DM40

FIGURE 3



ALWAYS FURNISH MODEL AND SERIAL NUMBER WHEN ORDERING PARTS.

FIGURE 3

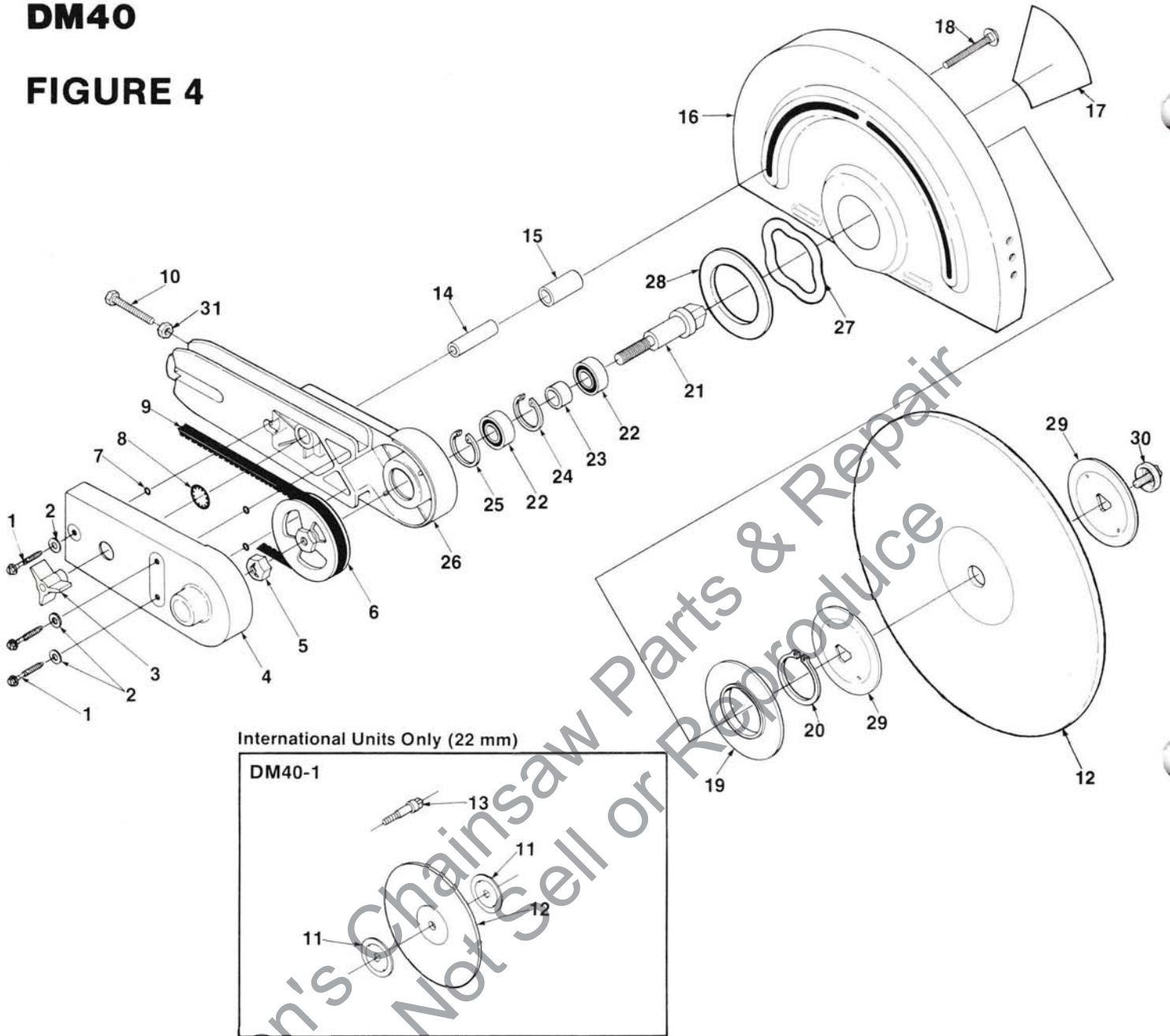
NO.	DESCRIPTION	PART NO.	QTY.	NO.	DESCRIPTION	PART NO.	QTY.
1	SCREW	82253	3	31	BEARING- Retainer	A-47871	1
2	SPRING- Clutch	93638-A	3		Includes:		
3	SPIDER- Clutch	93639	1	32	SEAL	70729	1
4	SHOE- Clutch	A-93632-A	3	33	GASKET- Bearing retainer	93329	1
5	WASHER- Thrust	93650	1	34	NUT	81208	4
6	PULLEY- Drum & Bearing	A-46123	1	35	NUT- Retainer	12689-A	2
	Includes:			36	FITTING- Tubing	69833	1
7	BEARING- Needle	46071	1	37	BOLT	47948	1
8	RACE- Inner	46070	1	38	SEAL- Shaft	70729	1
9	WASHER- Thrust	46135	1	39	SPARK PLUG (Champion DJ7Y)	96169-S	1
10	SEAL	48859	1	40	TERMINAL- Spark plug	A-33055	1
11	SCREW- 8-32 x 5/8	80582	4	41	ROTOR- 4.500 Dia.	93313	1
12	RETAINER- Reed valve	93328	1	42	SPRING- Starter pawl	65375-2	2
13	CONNECTOR- Carburetor	93327	1	43	WASHER- Lock #2	70901	2
14	SEAT- Reed valve	93324	1	44	FINGER- Starter	58756	2
15	RETAINER- Reed	93326-A	1	45	STUD- Shoulder	58757-E	2
16	REED	93325	4	46	SCREW- Mach pan hd.	82251	4
17	SCREW- Cap socket head	93399	4	47	NUT- Locking hex	81255	1
18	WASHER- Conical	12021	4	48	WASHER- Flat	95479-A	2
19	PISTON & CYLINDER (See Note 2)	A-48841	1	49	SCROLL- Air guide	93312	1
	Includes:			50	LEAD- Hi-tension (Note 1)	69326	1
20	GASKET- Cylinder	93338	1	51	SWITCH & LEAD	A-97837	1
21	PISTON RING	48851	2	52	SCREW	80052	2
22	RING- Retaining	64813	2	53	CLAMP- Wire	50729	1
23	CRANKSHAFT	A-48836	1	54	MODULE	A-48507	1
	Includes:				Includes:		
24	BEARING- Ball	94621	1	55	GROMMET	58318	1
25	BEARING- Roller	97566	1	56	COVER- Clutch	93628	1
26	KEY- Woodruff	75078	1	57	BEARING- Ball	94621	1
27	PIN- Dowel	31062	2				
28	SCREW- 10 - 24 x 1.750	88056	5				
29	CRANKCASE	A-47868	1				
	Includes:						
30	SCREW	80660	3				

NOTE 1: Cut replacement lead 69326 to 6".

NOTE 2: When replacing the piston only, refer to the insert and order the piston matching the cylinder I.D. number which is stamped on top of each cylinder and piston.

DM40

FIGURE 4



International Units Only (22 mm)

DM40-1

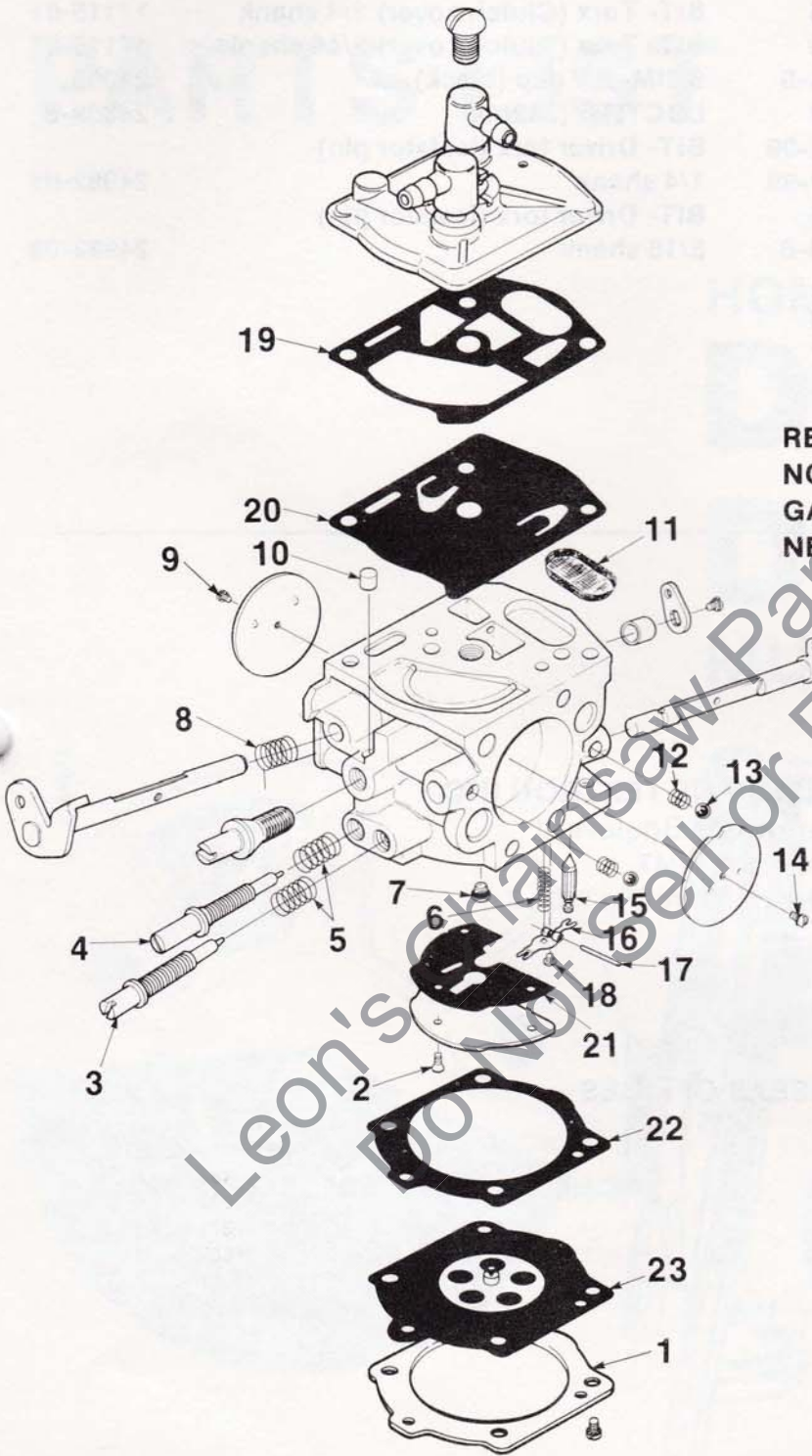
NO.	DESCRIPTION	PART NO.	QTY.	NO.	DESCRIPTION	PART NO.	QTY.
1	SCREW	94143	1	16	GUARD- Wheel	A-43462-1A	1
2	WASHER- Flat	84026	3	17	LABEL- Caution	48922	1
3	KNOB	46076	1	18	BOLT- Step	82371	1
4	COVER- Arm	43966	2	19	WASHER- Mounting	46000	1
5	NUT- Lock hex	81245	1	20	RING	46065	1
6	PULLEY- Driven	43998-1A	1	21	SHAFT- Wheel (DM40)	46079-A	1
7	"O" RING	46462	3	22	BEARING- Ball	63107-S	2
8	RING- Retaining	46072	1	23	SPACER- Bearing	46067	1
9	BELT- "V" Drive	46068	1	24	RING- Retaining	47207	1
10	SCREW	46130	1	25	RING- Retaining	31746	1
11	FLANGE- Wheel (DM-40-1)	43997-1	2	26	ARM- Wheel	A-47407	1
12	WHEEL- Resinoid (Concrete) (DM40)	64596-BS	1		Includes:		
	WHEEL- Resinoid (Concrete) (DM40-1)	47449	1	27	SPRING- Wave	47388	1
13	SHAFT- Wheel (DM40-1)	46078-A	1	28	SHIM	47387	1
14	SPACER- Guard adjusting	46456-A	1	29	FLANGE- Wheel (DM40)	43996-1	1
15	TUBING- Rubber	46455	1	30	SCREW, WASHER & RETAINER KIT	A-48783	1
				31	NUT	81162	1

ALWAYS FURNISH MODEL AND SERIAL NUMBER WHEN ORDERING PARTS.

FIGURE 5

CARBURETOR (WS-22) Walbro A-97102

REPAIR KIT (1-23)	97132
NOZZLE CHECK VALVE (7)	97131
GASKET/DIAPHRAGM KIT (19-23)	97133
NEEDLE- Inlet (15)	64229



ACCESSORIES

WHEEL- Resinoid (Metal) (DM40-1)	47450
WHEEL- Resinoid (Metal) (DM40)	64597-BS
WHEEL- Resinoid (Ductile) (DM40)	68421-AS
KIT- Emergency (DM40)	A-48705
KIT- Emergency (DM40-1)	A-48706
BLADE- Carbide	64595-S
SEALASTIC	24823
TUBING- Rubber 10' (Fuel)	93112-99
TUBING- Rubber 10' (Pulse line)	93157-99
PAINT- Red	23415
PULLER- Rotor	A-17106-B
Includes:	
STUD- Hex hd.	17108
SCREW	80627
RING- Retaining	93972

TOOLS

WRENCH- Combination	A-24284
WRENCH- Adjusting	A-24085
WRENCH- Spanner	A-17146
BIT- Torx (Clutch cover) 1/4 shank	17115-01
BIT- Torx (Clutch cover) 5/16 shank	17115-02
SHIM- Air gap (black)	24306
LOCTITE (242)	24388-B
BIT- Driver torx (isolator pin) 1/4 shank	24982-01
BIT- Driver torx (isolator pin) 5/16 shank	24982-02

HOMELITE DIVISION OF TEXTRON INC.

14401 Carowinds Boulevard
P.O. Box 7047
Charlotte, North Carolina 28217

OVERSEAS OFFICES

HOMELITE DIVISION OF TEXTRON INC.

Korenaarstraat I
2153 BM Nieuw Vennep
The Netherlands

HOMELITE DIVISION OF TEXTRON INC.

Pacific Limited
P.O. BOX 209
Blackburn, 3130
Victoria, Australia

HOMELITE **TEXTRON**

Homelite Division of Textron Inc.