

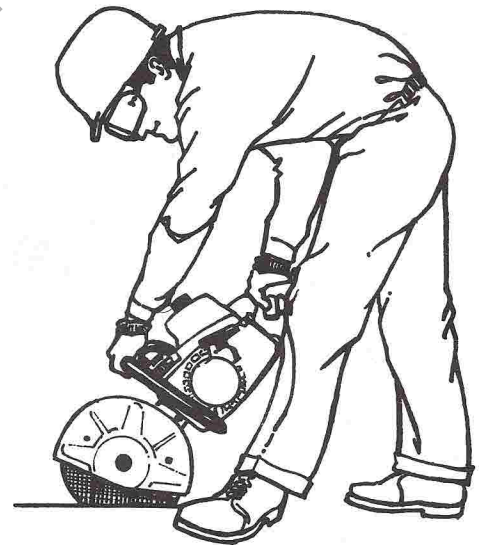
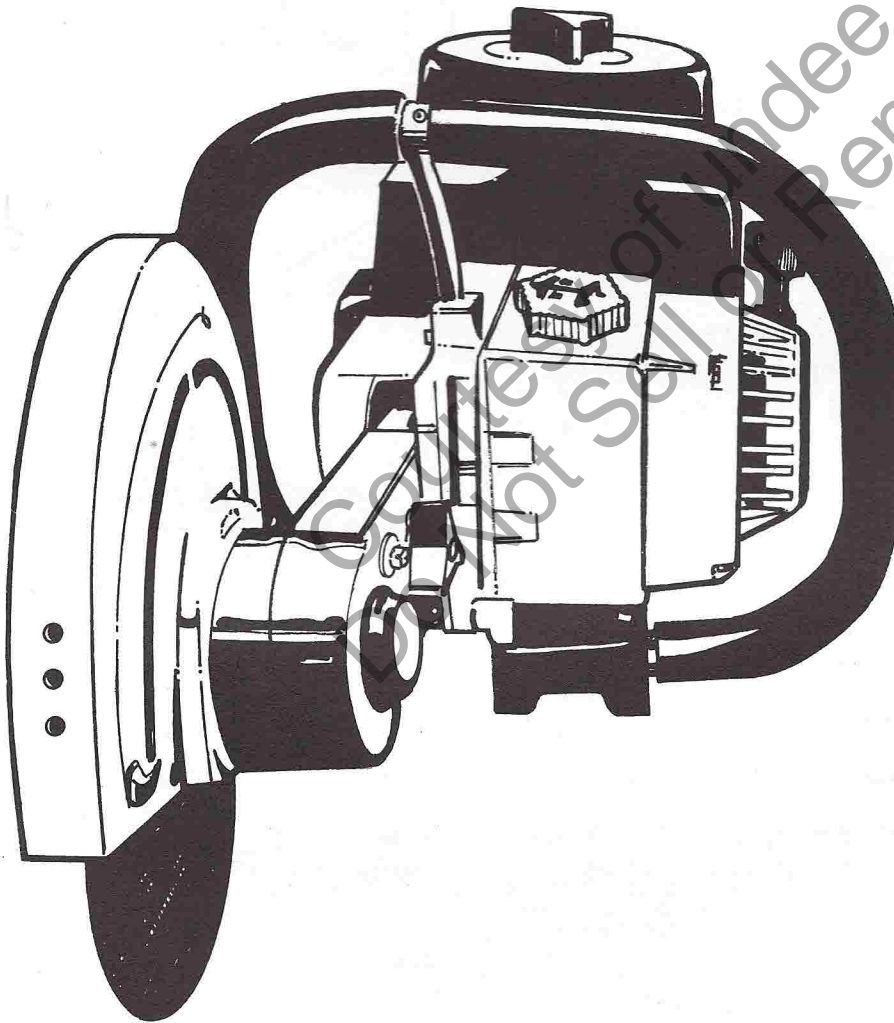
PART NO. 17331-REV. 1
Printed in U.S.A.
Price .35

Parts List

HOMELITE®

DM 20

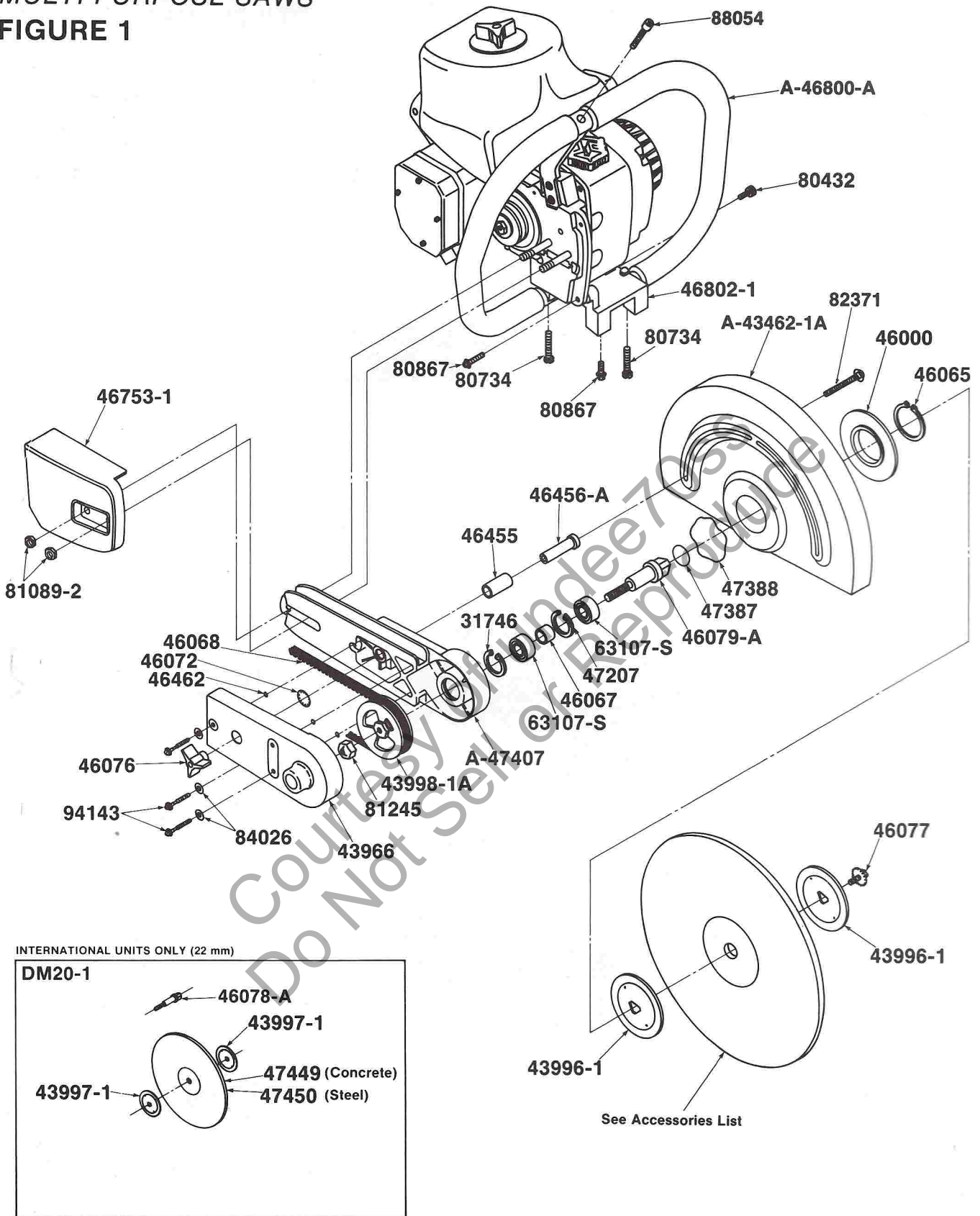
MULTI PURPOSE SAWS



HOMELITE
TEXTRON

Homelite Division of Textron Inc.

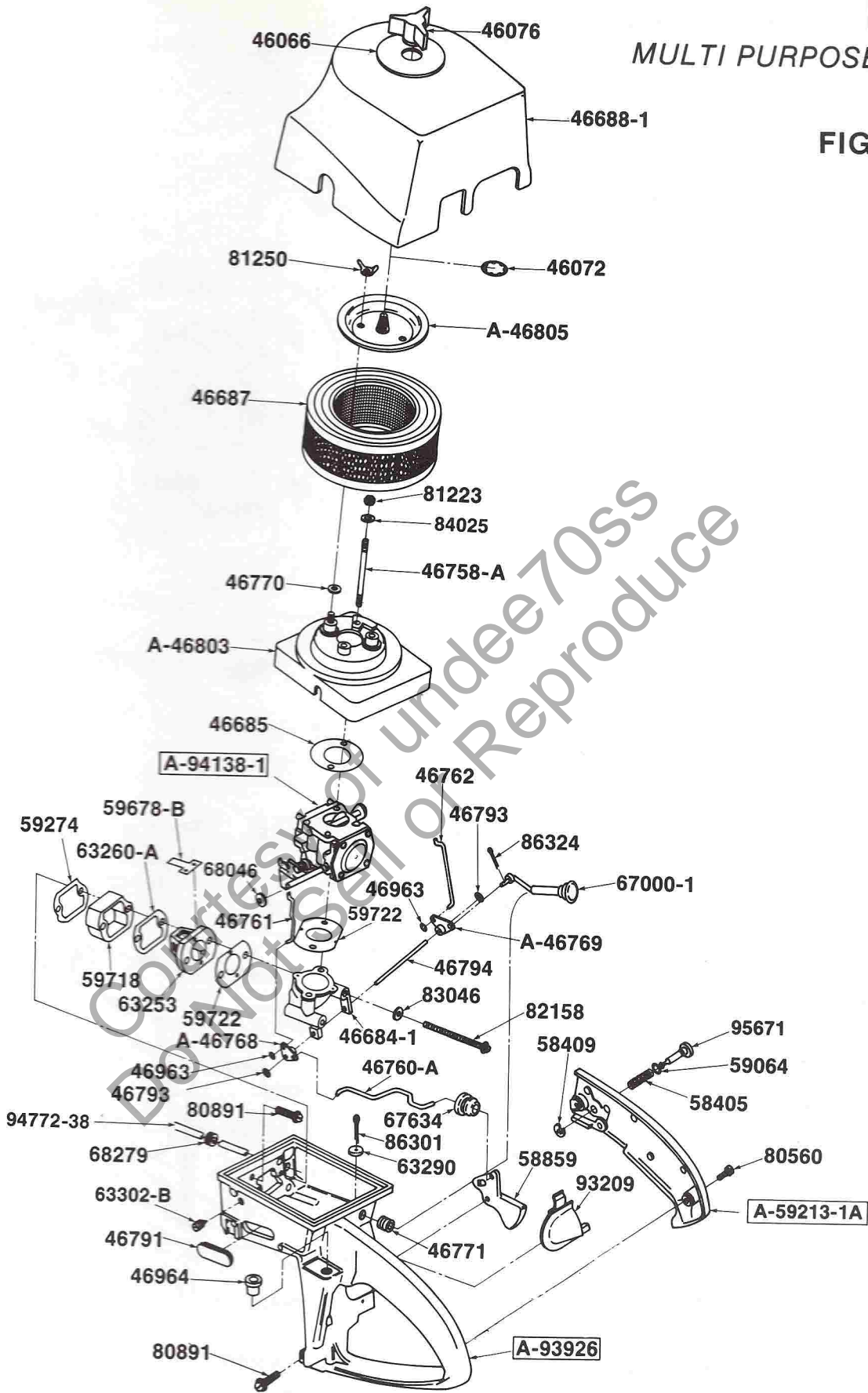
DM 20
MULTI PURPOSE SAWS
FIGURE 1



NUMBERS IN BOXES ARE ASSEMBLIES. ASSEMBLY BREAKDOWNS ARE LISTED NUMERICALLY IN THE BACK OF THE BOOK.

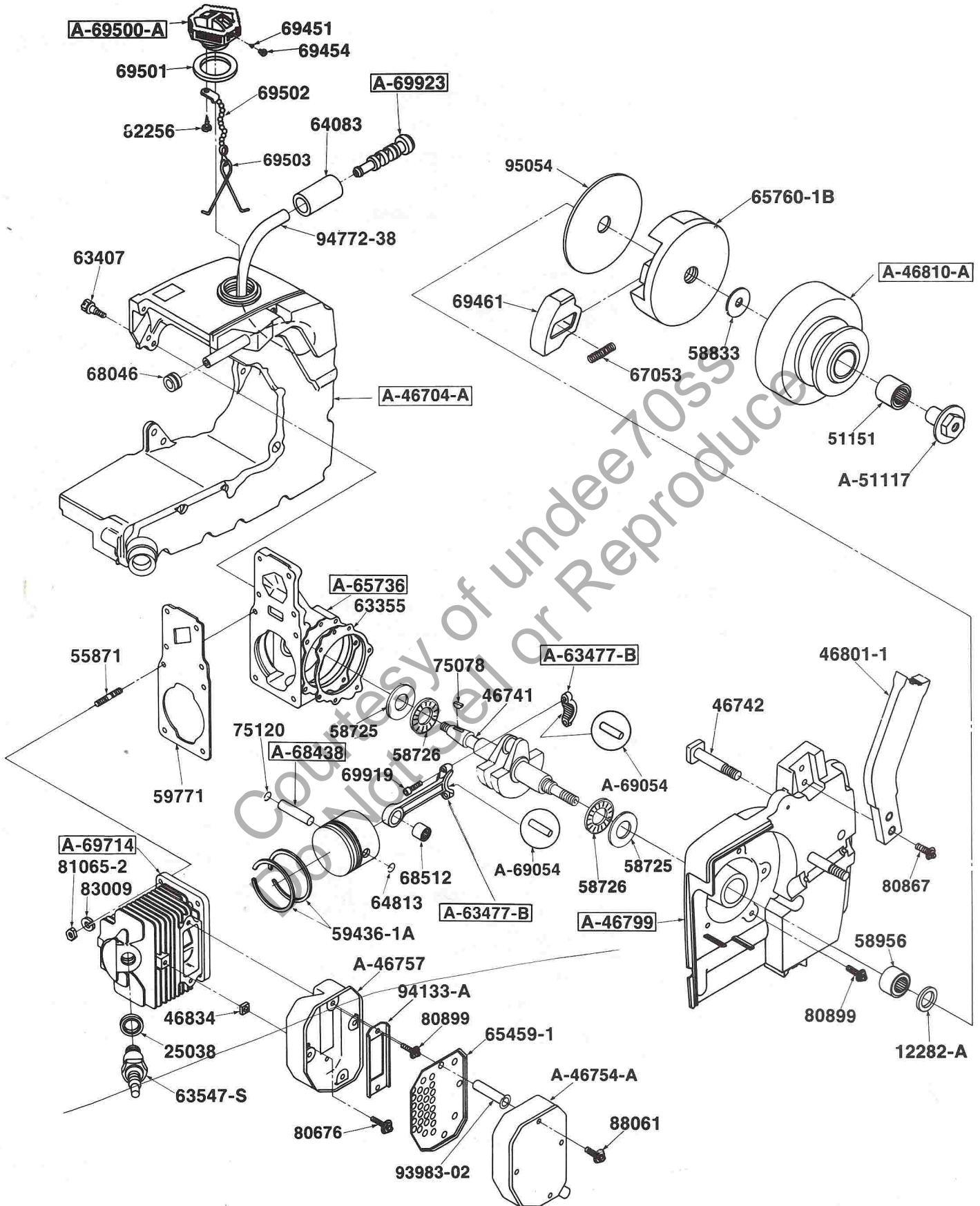
DM 20
MULTI PURPOSE SAWS

FIGURE 2



NUMBERS IN BOXES ARE ASSEMBLIES. ASSEMBLY BREAKDOWNS ARE LISTED NUMERICALLY IN THE BACK OF THE BOOK.
ALWAYS FURNISH MODEL AND SERIAL NUMBER WHEN ORDERING PARTS.

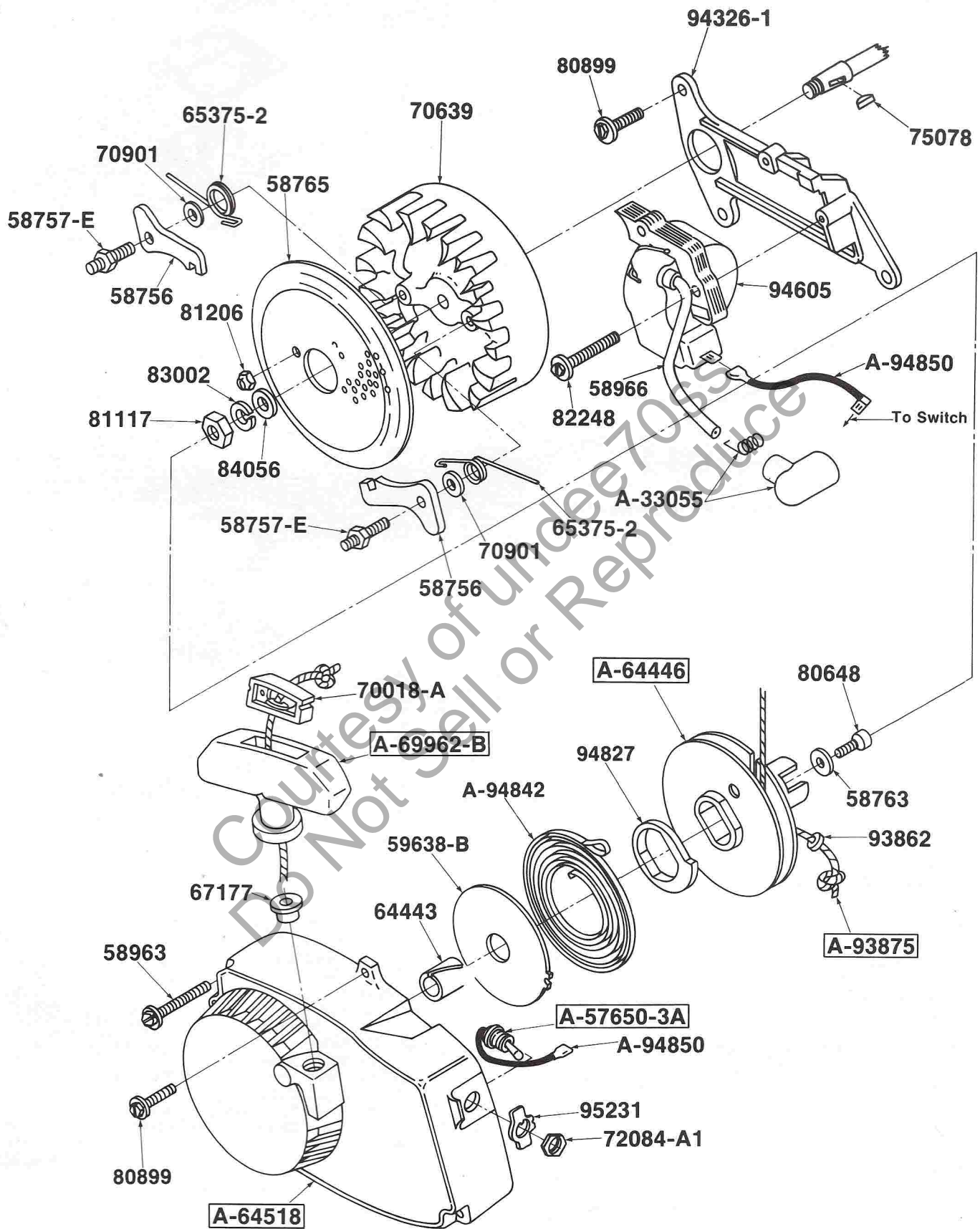
DM 20
MULTI PURPOSE SAWS
FIGURE 3



NUMBERS IN BOXES ARE ASSEMBLIES. ASSEMBLY BREAKDOWNS ARE LISTED NUMERICALLY IN THE BACK OF THE BOOK.

ALWAYS FURNISH MODEL AND SERIAL NUMBER WHEN ORDERING PARTS.

DM 20
MULTI PURPOSE SAWS
FIGURE 4



NUMBERS IN BOXES ARE ASSEMBLIES. ASSEMBLY BREAKDOWNS ARE LISTED NUMERICALLY IN THE BACK OF THE BOOK.
 ALWAYS FURNISH MODEL AND SERIAL NUMBER WHEN ORDERING PARTS.

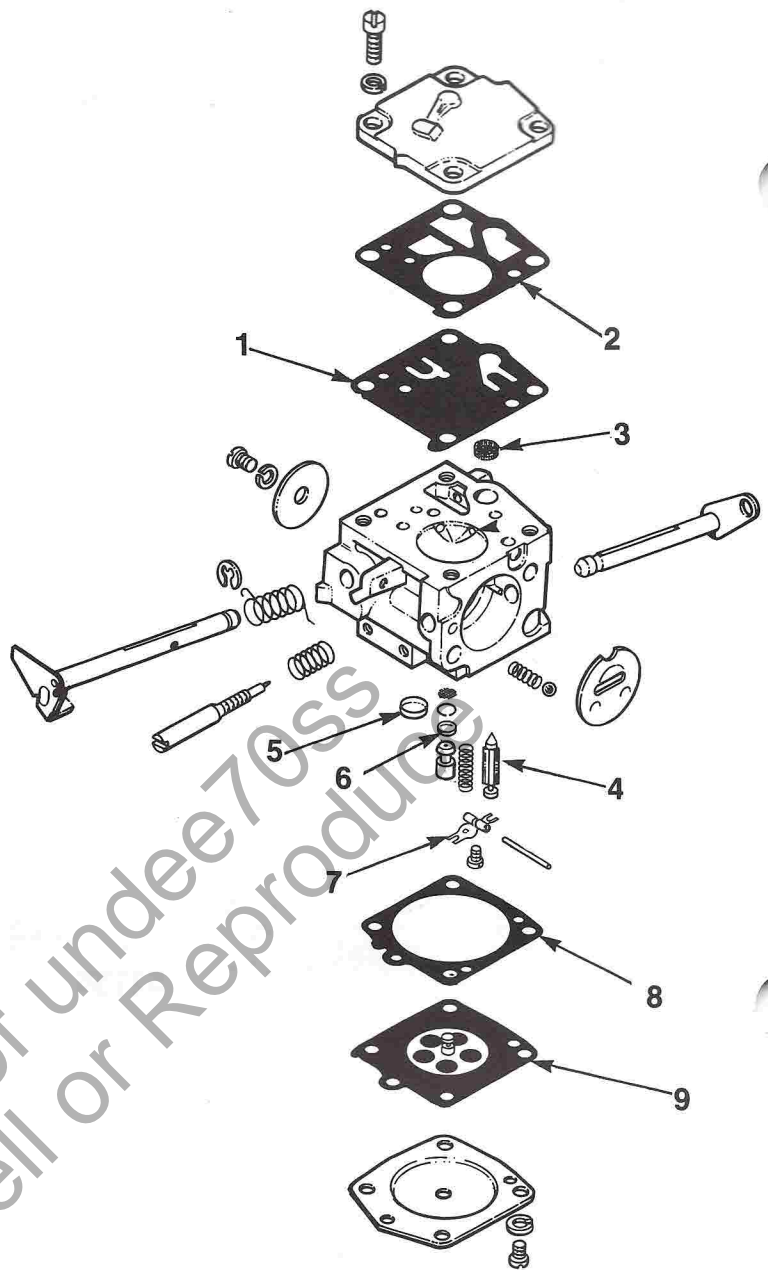
DM 20

MULTI PURPOSE SAWS

CARBURETOR HS-202-A

A-94138-1

95698 Repair Kit (Includes #1-9)



NUMERICALLY LISTED ACCESSORIES AND TOOLS

| | | | |
|-----------------------------------|-----------|---|--------------|
| DC-4 Compound | 22636-A | PULLER- Magneto rotor | A-23960 |
| PLIERS- Retaining ring (piston) | 22828 | WRENCH- Combination | A-24085-A |
| WRENCH- Socket Screw | 23528 | WRENCH- Combination | A-24284 |
| TOOL- Needle bearing | 23756 | SCREWDRIVER | 24541 |
| TOOL- Needle bearing | 23757 | SHIM- Plastic | 24853 |
| PLUG- Seal | 23758 | KIT- Wet cutting | A-46477 |
| SLEEVE- Seal protecting | 23759 | SCREW- Mach. hex hd. (adj. arm) | 46836 |
| SLEEVE- Seal installation | 23800 | BLADE- Carbide | 64595-S |
| PLUG- Needle bearing installation | 23819 | WHEEL- Resinoid (concrete) (std.) | 64596-BS |
| SPANNER WRENCH- Clutch | A-23934 | WHEEL- Resinoid (concrete) DM-20-1 (std.) | 47449-(22mm) |
| Includes: | | WHEEL- Resinoid ductile (opt.) | 64597-BS |
| PIN | 23954 | WHEEL- Resinoid Steel (opt.) | 68421-AS |
| WRENCH- Combination | A-23937-B | WHEEL- Resinoid Steel (DM-20-1) (opt.) | 47450-(22mm) |
| PLUG- Piston pin removal | A-23949 | WRENCH- Socket | 68651 |
| Includes: | | KIT- Emergency | A-47291 |
| "O" Ring | 67900 | | |

NUMBERS IN BOXES ARE ASSEMBLIES. ASSEMBLY BREAKDOWNS ARE LISTED NUMERICALLY IN THE BACK OF THE BOOK.

ALWAYS FURNISH MODEL AND SERIAL NUMBER WHEN ORDERING PARTS.

NUMERICAL LISTING

| PART NO. | DESCRIPTION | QTY. | PART NO. | DESCRIPTION | QTY. | PART NO. | DESCRIPTION | QTY. |
|------------|---------------------------------|------|------------|---------------------------------|------|-----------|-------------------------------|------|
| 12282-A | SEAL | 2 | A-47407 | ARM Wheel | 1 | A-69714 | CYLINDER | 1 |
| *22636-A | DC-4 COMPOUND | | *47449 | WHEEL- Concrete (20-1) | 1 | | Includes: | |
| *22828 | PLIERS- Retaining Ring (piston) | | *47450 | WHEEL- Steel (20-1) | 1 | 59771 | GASKET- Cylinder | 1 |
| *23528 | WRENCH- Socket Screw | | A-51117 | RACE- Inner Flange | 1 | 69919 | SCREW- Cap | 2 |
| *23756 | TOOL- Needle Bearing | | 51151 | BEARING- Needle | 1 | | (8-32 x 1/2) | |
| *23757 | TOOL- Needle Bearing | | 55871 | STUD- Cylinder | 4 | A-69923 | FILTER- Fuel | 1 |
| *23758 | PLUG- Seal | | A-57650-3A | SWITCH- Grounding | 1 | | Includes: | |
| *23759 | SLEEVE- Seal Protecting | | | Includes: | | 64083 | ELEMENT- Felt filter | 1 |
| *23800 | SLEEVE- Seal Installation | | 72084-A1 | NUT- Hex | 1 | A-69962-B | GRIP- Starter w/insert | 1 |
| *23819 | PLUG- Needle Bearing | | 58405 | SPRING- Throttle Lock | 1 | | Includes: | |
| *A-23934 | SPANNER WRENCH- Clutch | | 58409 | RING- Retaining | 1 | 70018-A | INSERT- Rope retaining | 1 |
| | Includes: | | 58725 | RACE- Thrust | 2 | 70639 | ROTOR | 1 |
| *23954 | PIN- Clutch Spanner | | 58726 | BEARING- Needle | 2 | 70901 | WASHER- Lock #12 | 2 |
| *A-23937-B | WRENCH- Combination | | 58756 | PAWL- Starter | 2 | 72084-A1 | NUT- Hex | 1 |
| *A-23949 | PLUG- Piston Pin Removal | | 58757-E | STUD- Shoulder | 2 | 75078 | KEY- Woodruff | 1 |
| | Includes: | | 58765 | WASHER- Retaining | 1 | 75120 | RING- Pin | 1 |
| *67900 | "O" Ring | | 58833 | WASHER- Thrust | 1 | 80432 | SCREW- Cap soc. hd. | 1 |
| *23954 | PIN- Clutch spanner | | 58859 | TRIGGER- Throttle | 1 | | (1/4-20 x 1/2) | |
| *A-23960 | PULLER- Magneto rotor | | 58956 | BEARING- Needle | 1 | 80560 | SCREW- Pan hd. | 2 |
| *A-24085-A | WRENCH- Combination | | 58963 | SCREW- Fan Housing | 3 | | (8-32 x 1/2) | |
| *A-24284 | WRENCH- Combination | | 58966 | LEAD- High tension | 1 | 80648 | SCREW- hex mach. | 1 |
| *24541 | SCREWDRIVER | | 59064 | BUSHING- Nylon | 1 | | (10-32 x 1 1/4) | |
| *24853 | SHIM- Plastic | | A-59213-1A | COVER- Throttle Handle | 1 | 80676 | SCREW- Mach. hex hd. | 1 |
| 25038 | GASKET- Spark plug | 1 | | Includes: | | | (12-24 x 5/8) | |
| 31746 | RING- Retaining | 1 | 59064 | BUSHING- Nylon | 1 | 80734 | SCREW- Cap soc. hd. | 2 |
| A-33055 | TERMINAL- High tension lead | 1 | 59274 | GASKET- Spacer | 1 | | (1/4-20 x 1 1/4) | |
| A-43462-1A | GUARD- Blade | 1 | 59436-1A | PISTON RING | 2 | 80867 | SCREW- Mach. hex hd. | 2 |
| 43966 | CCVER- Arm | 1 | 59638-B | SHIELD- Spring | 1 | 80891 | SCREW- Mach. hex hd. | 5 |
| 43996-1 | FLANGE- Wheel (DM 20) | 2 | 59678-B | GASKET- Reed | 4 | 80899 | SCREW- Mach. hex hd. | 9 |
| 43997-1 | FLANGE- Wheel (DM 20-1) | 2 | 59718 | SPACER- Carburetor | 1 | | (12-24 x 9/16) | |
| 43998-1A | PULLEY- Driven | 1 | 59722 | GASKET- Carburetor | 2 | 81065-2 | NUT- Hex | 4 |
| 46000 | WASHER- Mounting | 1 | 59771 | GASKET- Cylinder | 1 | | (1/4-28) | |
| 46065 | WASHER- Retaining | 1 | 63107-S | BEARING- Ball | 2 | 81089-2 | NUT- Hex (DM 20 only) | 2 |
| 46066 | WASHER- Flat | 1 | 63253 | SEAT- Reed valve | 1 | | (3/8-16) | |
| 46067 | SPACER- Bearing | 1 | 63260-A | RETAINER- Reed valve | 1 | 81117 | NUT- Hex | 1 |
| 46068 | BELT- V-Drive | 1 | 63290 | WASHER- Felt | 1 | | (5/16-24) | |
| 46072 | RING- Retaining | 2 | 63302-B | SCREW- Idle adjusting | 1 | 81206 | NUT- Hex | 2 |
| 46076 | KNOB | 2 | 63355 | GASKET- Crankcase | 1 | | (10-32) | |
| 46077 | SCREW- Hex hd. | 1 | 63407 | SCREW- Hex hd. | 3 | 81223 | NUT- Center lock | 2 |
| | (3/8-24 x 3/4) | | A-63477-B | ROD- Connecting | 1 | | (8-32) | |
| 46078-A | SHAFT- Wheel (DM 20-1) | 1 | | Includes: | | 81245 | NUT- Hex lock | 1 |
| 46079-A | SHAFT- Wheel (DM 20) | 1 | 68512 | BEARING- Needle | 1 | | (1/2-13) | |
| 46455 | TUBING- Rubber | 1 | 68919 | SCREW- Cap | 2 | 81250 | NUT- Wing | 2 |
| 46456-A | SPACER- Guard adjusting | 1 | | (8-32 x 1/2) | | | (10-24) | |
| 46462 | "O" Ring | 3 | 63547-S | SPARK PLUG | 1 | 82158 | SCREW- Mach. hex hd. | 2 |
| *A-46477 | KIT- Wet cutting | 1 | | Includes: | | | (10-32 x 2 1/2) | |
| 46684-1 | MANIFOLD- Inlet | 1 | 25038 | GASKET- Spark plug | 1 | 82248 | SCREW- Mach. hex hd. | 2 |
| 46685 | GASKET- Carburetor | 1 | 64063 | ELEMENT- Felt filter | 1 | | (8-32 x 3/4) | |
| 46687 | FILTER ELEMENT- Air | 1 | 64443 | BUSHING- Starter Post | 1 | 82256 | SCREW- Pan hd. | 1 |
| 46688-1 | COVER- Air Filter | 1 | A-64446 | PULLEY- Rewind Starter | 1 | | (#6-1/4) | |
| A-46704-A | TANK- Fuel | 1 | | Includes: | | 82371 | BOLT- Step | 1 |
| | Includes: | | 64827 | LOCK- Spring | 1 | 83002 | WASHER- Lock (5/16) | 1 |
| 64083 | ELEMENT- Felt filter | 1 | A-64518 | HOUSING- Fan & Rewind | 1 | 83009 | WASHER- Lock (1/4) | 4 |
| 94772-38 | TUBING- Rubber | 1 | | Includes: | | 83046 | WASHER- Lock (#10) | 2 |
| 46741 | CRANKSHAFT | 2 | 64443 | BUSHING- Starter Post | 1 | 84025 | WASHER- Flat (#8) | 2 |
| 46742 | BOLT- Arm | 2 | 67177 | BUSHING- Starter Cover | 1 | 84026 | WASHER- Flat (1/4) | 3 |
| 46753-1 | COVER- Drivetrain | 1 | 64595-S | BLADE- Saw | 1 | 84056 | WASHER- Flat (5/16) | 1 |
| A-46754-A | MUFFLER CAP & TUBE | 1 | 64596-BS | WHEEL- Resinold Concrete (std.) | 1 | 86301 | PIN- Cotter | 1 |
| | Includes: | | 64597-BS | WHEEL- Resinold Ductile | 1 | 86324 | PIN- Cotter | 1 |
| 93983-02 | SPACER- Muffler | 4 | 64813 | RING- Retaining | 1 | | (1-32 x 1/2) | |
| A-46757 | BODY- Muffler | 2 | 65375-2 | SPRING- Starter pawl | 2 | 88054 | SCREW- Sems hex 10-24 x 1 1/4 | 1 |
| 46758-A | STUD | 2 | 65459-1 | BAFFLE- Muffler | 1 | 88061 | SCREW- Sems hex hd. | 4 |
| 46760-A | ROD- Throttle | 1 | A-65736 | CRANKCASE | 1 | | (10-32 x 1 3/4) | |
| 46761 | ROD- Throttle | 1 | | Includes: | | 93209 | SHIELD- Spark plug | 1 |
| 46762 | ROD- Choke | 1 | 12282-A | SEAL | 1 | 93862 | WASHER- Nylon flat | 1 |
| A-46768 | BELLCRANK | 1 | 55871 | STUD- Cylinder | 4 | A-93875 | ROPE- Starter | 1 |
| A-46769 | BELLCRANK | 1 | 58956 | BEARING- Needle | 1 | | Includes: | |
| 46770 | WASHER- Sealing | 2 | 65780-1B | PLATE- Clutch | 1 | 93862 | WASHER- Nylon flat | 1 |
| 46771 | GROMMET | 1 | 67000-1 | ROD- Choke | 1 | A-93926 | THROTTLE HANDLE | 1 |
| 46791 | GROMMET | 1 | 67053 | SPRING- Clutch | 3 | | Includes: | |
| 46793 | RING- Retaining | 2 | 67177 | BUSHING- Starter Cover | 3 | 63290 | WASHER- Flat | 1 |
| 46794 | SHAFT | 1 | 67634 | BOOT- Throttle rod | 1 | 67634 | BOOT- throttle rod | 1 |
| A-46799 | DRIVECASE | 1 | *67900 | "O" RING | 1 | 86301 | PIN- Cotter | 1 |
| | Includes: | | 68046 | GROMMET | 2 | 93209 | SHIELD- Spark plug | 1 |
| 12282-A | SEAL | 1 | 68279 | GROMMET | 1 | 94142 | PIN- (Not shown) | 1 |
| 46742 | BOLT- Arm | 2 | A-68421-AS | WHEEL- Resinold | 1 | 93983-02 | SPACER- Muffler | 4 |
| 46801-1 | BRACE- Handle | 1 | A-68438 | PISTON | 1 | 94133-A | PLATE- Muffler | 1 |
| 58956 | BEARING- Needle | 1 | | Includes: | | A-94138-1 | CARBURETOR | 1 |
| 80867 | SCREW- Mach. Hex hd. | 1 | 59436-1A | PISTON RING | 1 | | PIN | 1 |
| | (12-24 x 3/4) | | 64813 | RING- Retaining | 1 | 94142 | SCREW- Slotted hex | 3 |
| A-46800-A | HANDLE BAR | 1 | 75120 | RING- Pin | 1 | | (1/4-20 x 1 1/4) | |
| 46801-1 | BRACE- Handle | 1 | 68512 | BEARING- Needle | 1 | 94326-1 | Plate- Ignition coil mtg. | 1 |
| 46802-1 | SUPPORT- Foot | 1 | *68651 | WRENCH- Socket | 1 | 94805 | MODULE & CORE | 1 |
| A-46803 | SUPPORT- Air filter | 1 | A-69054 | ROLLER- Needle | 1 | 94772-38 | TUBING- Rubber | 1 |
| A-46805 | PLATE & STUD | 1 | 69451 | VALVE- Check | 1 | 64827 | LOCK- Spring | 1 |
| A-46810-A | PULLEY DRUM & BEARING | 1 | 69454 | FILTER- Fuel cap | 1 | A-94842 | SPRING- Rewind | 1 |
| | Includes: | | 69461 | SHOE- Clutch | 3 | A-94850 | LEAD- Ground | 1 |
| 51151 | BEARING- Needle | 1 | A-69500-A | CAP- Fuel | 1 | 95054 | COVER- Clutch | 1 |
| 46834 | SPACER | 1 | | Includes: | | 95231 | PLATE- Indicating | 1 |
| 46836 | SCREW- Mach. Hex Hd. | 1 | 69451 | VALVE- Check | 1 | 95671 | PIN- Throttle lock | 1 |
| | (5/16-18 2A x 2 3/4) | | 69454 | FILTER- Fuel cap | 1 | 95698 | KIT- Repair | 1 |
| 46963 | RING- Retaining | 2 | 69501 | GASKET- Fuel filler cap | 1 | | | |
| 46964 | PLUG | 1 | 69502 | CHAIN- Bead | 1 | | | |
| 47207 | RING- Retaining | 1 | 69503 | RETAINER- Filler cap | 1 | | | |
| A-47291 | KIT- Emergency | 1 | 82256 | SCREW- Pan hd. | 1 | | | |
| 47387 | SHIM | 1 | | (#6 - 1/4) | | | | |
| 47388 | SPRING- Wave | 1 | | | | | | |

*ACCESSORIES AND TOOLS

NUMBERS IN BOXES ARE ASSEMBLIES. ASSEMBLY BREAKDOWNS ARE LISTED NUMERICALLY IN THE BACK OF THE BOOK.

ALWAYS FURNISH MODEL AND SERIAL NUMBER WHEN ORDERING PARTS.

1182JY

HOMELITE®
CONSTRUCTION & INDUSTRIAL EQUIPMENT
14401 CArowinds Blvd. • P.O. Box 7047 • Charlotte, N.C. 28217

Courtesy of Underhill
Do Not Sell or Reproduce

HOMELITE **TEXTRON**

Homelite Division of Textron Inc.