

HOMELITE CHAIN SAWS

Choose From 10 Models



HOMELITE



CONVERTIBLE DRIVE



HOMELITE



CONVERTIBLE DRIVE



Convert any C-Series chain saw from a fast-cutting direct drive to a rugged and powerful gear drive in 9 minutes or less with Homelite's exclusive planetary gear conversion unit.



Convertible drive C-5 is ideal for all-round farm use

The C-5 provides a low-cost way to cut timber, firewood or fence-posts, clear storm damage, prune, trim and do the many other woodcutting jobs around a farm or estate. All-position carburetor lets you cut up, down, even upside down with no power loss. High-voltage ignition system starts quickly in any weather. Flush-cut handle lets you cut level with the ground, leaves no stumps. And for the occasional tough cutting job you can convert it from direct drive to gear drive to get extra lugging power. Fells trees up to 3 feet in diameter yet weighs only 18 pounds*. Available with straight blades from 14" to 21" and with 16" plunge-cut bow.

Own the C-5 chain saw for as little as \$2.85 weekly after small down payment.

A powerful all-purpose convertible drive chain saw

The new Homelite C-7 is powered to make it perfect for production cutting and all-purpose use around the farm. Comfortable handle-bar grip can't slip, gives you better control. High-voltage ignition system assures fast starting in any kind of weather. Throttle lock makes starting easier. Super-efficient spark arresting muffler is extra quiet, smoother running. And when you need extra lugging power for large or tough trees, the C-7 can be converted from a direct drive to a gear drive. The C-7 is a light weight 18½ pounds* but fells trees up to 3 feet in diameter. Available with straight blades from 14" to 25" and with 16" plunge-cut bow.

Own the C-7 chain saw for as little as \$3.45 weekly after small down payment.



HOMELITE



CONVERTIBLE DRIVE



HOMELITE

WIZ



The convertible drive C-9 is compact but extra powerful

The most powerful saw in the C-Series, the C-9 makes quick work of trees up to 4 feet in diameter. Free-breathing pyramid reed valve and larger displacement give it the extra power for production cutting, tree farming, clearing and many other professional cutting jobs. To get extra lugging power it can be converted from direct drive to gear drive. Equipped with a special handlebar grip for positive, no-slip control, spiked bumper plate and super-efficient spark arresting muffler. Throttle lock makes starting quick and easy. The C-9 weighs only 19 pounds*. Available with straight blades from 14" to 30" and with 16" plunge-cut bow.

Own the C-9 chain saw for as little as \$4.10 weekly after small down payment.

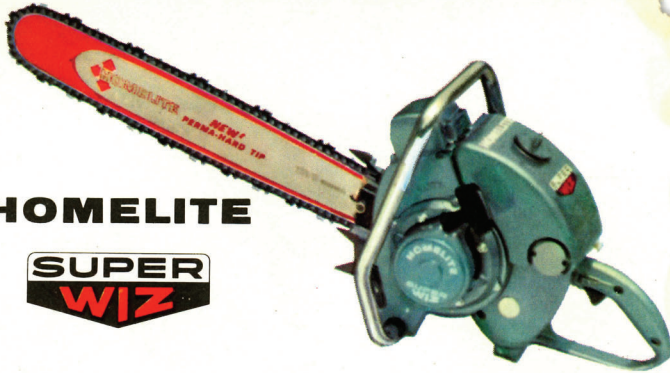
The pace setter in pulpwood production cutting

The Homelite Wiz is a rugged, fast production saw, built to take the steady day-after-day pounding of professional cutting. With the Homelite 16" plunge-cut bow, it is an ideal saw for pulpwood production. Flush cut handle lets you cut level with the ground. New, improved filter keeps the engine running cleaner, big back-plate and fan housing keep it running cool. You'll find that with a Wiz you spend more time cutting and less time fussing. The well-balanced Wiz weighs only 20 pounds*, fells trees up to 4 feet in diameter. Available with straight blades from 16" to 28", 16" plunge-cut bow, and brush cutter.

Own this gear drive for as little as \$4.60 weekly, after small down payment.

HOMELITE

**SUPER
WIZ**



HOMELITE

**770
D**



The more-powerful big brother of the Wiz

You get more wood-cutting power in the Homelite Super Wiz because it has greater cylinder displacement. Homelite's famous pyramid-reed valve gives you smooth performance . . . even more power. All this gear drive power means that you cut more . . . make more. Made of durable polyester fibre, the air filter stays cleaner longer, can be re-cleaned easily . . . keeps your non-cutting time to a minimum. Built to take the toughest professional cutting, the new Super Wiz weighs only 20 pounds*, will fell trees up to 4 feet in diameter. Available with straight blades from 16" to 28", 16" plunge-cut bow and brush cutter.

Own this gear drive for as little as \$5.40 weekly, after small down payment.

A light, fast direct drive for production cutting

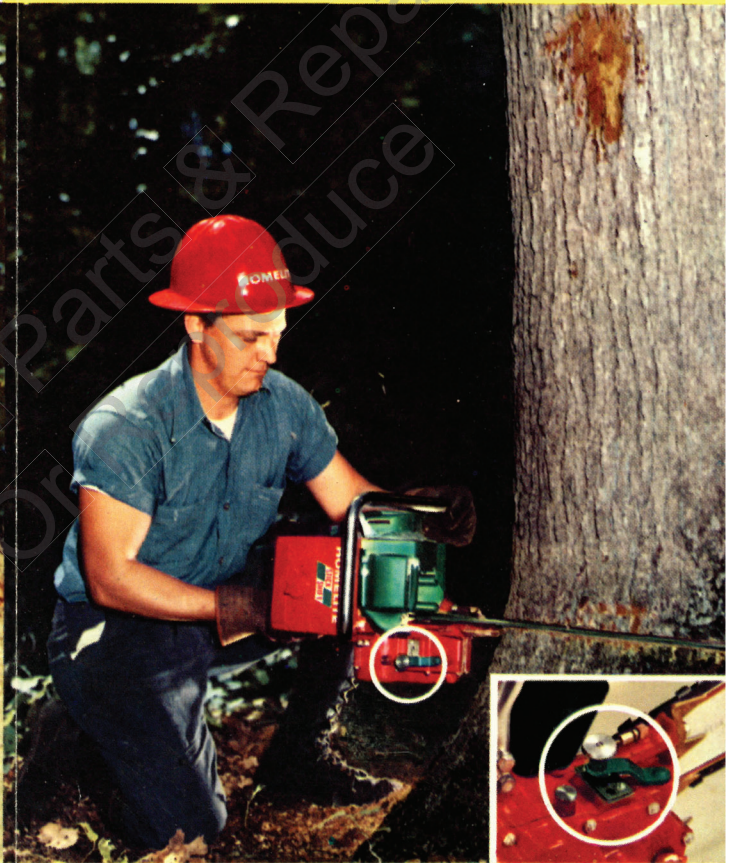
Homelite's 770D packs plenty of power, yet it is comparatively light. It gives you a quick cutting, easy-to-carry, easy-to-use saw that is perfectly suited to pulpwood or saw log cutting. The 770D weighs only 20½ pounds*, yet it will easily fell a tree up to 5 feet in diameter. Peak performance ratio of fuel and air are automatically maintained thanks to Homelite's internally vented carburetor. The new polyester fibre filter is designed to shed sawdust so it will stay clean longer, can be re-used again and again. The Homelite 770D is available with flush-cut or wrap-around handle, straight blades from 14" to 30", and 16" plunge-cut bow.

Own this direct drive saw for as little as \$4.85 weekly, after small down payment.

HOMELITE



HOMELITE



A gear drive with plenty of power for production cutting

In Homelite's 770G you get the ruggedness plus exceptional reliability you need for day after day production cutting. Its internally vented carburetor eliminates carburetor adjustment... automatically maintains constant fuel-air ratio for peak performance. The new vertical design polyester fibre air filter is oversized... sheds dirt and sawdust... can easily be cleaned with a tap or a sash. Perfectly balanced, the 770G weighs only 22 pounds*. Falls trees up to 7 feet in diameter. Choice of 2.8 or 3.5 to 1 gear ratio. Straight blades 16" to 60", 16" bow and clearing bar. Flush-cut or wrap-around handle.

Own this gear drive saw for as little as \$6.55 weekly, after small down payment.

This is the only chain saw that actually shifts gears!

The Homelite Stick-Shift is a first of its kind because it lets you change gears with a shift lever. For extra lugging power, shift into low gear (either 2.8 or 3.5 to 1). To get the speed of a direct drive shift into high gear (1.4 to 1). Eliminates carrying an extra saw, time lost in switching over. You get maximum production from a day's effort because you match the chain speed to the job, change speeds even while the blade is in a cut. With superior durability, the 25½ pound* Stick-Shift stands up to toughest professional cutting. Falls trees up to 7 feet in diameter. Available with straight blades from 16" to 60". 16" plunge-cut bow and clearing bar.

Own this Stick-Shift for as little as \$7.55 weekly, after small down payment.



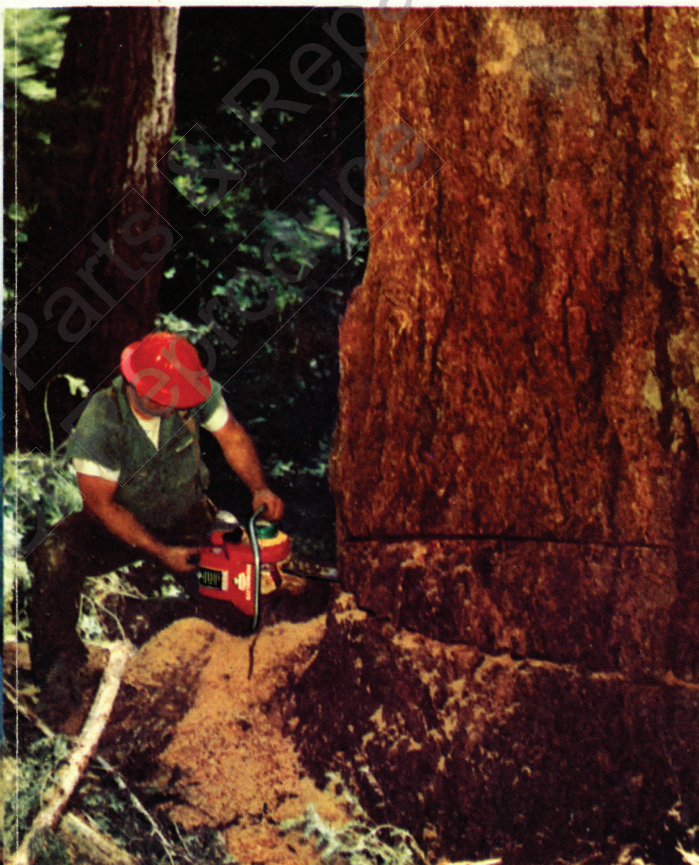
HOMELITE

990
D



HOMELITE

990
G



A light weight direct drive that packs big tree power

You'll be able to cut a lot more without getting worn out, if you're using a new 990D. This Homelite weighs only 23 pounds*, has a chain speed over 3,000 feet per minute and will fell trees up to 7 feet in diameter. New, pleated polyester fibre air filter provides extra-large, stay-clean capacity — can easily be cleaned and re-used. Internally vented carburetor insures that engine never runs too rich or too lean, automatically keeps the power mixture constant for efficient cutting at all times. "On-off" switch is near throttle for safe, easy "grouped" control. Available with straight blades from 17" to 42", 16" plunge-cut bow, and clearing bar.

Own this direct drive saw for as little as \$5.95 weekly, after small down payment.

Most powerful, most dependable one-man gear-drive chain saw

For a chain saw to deliver full power, the engine must get a full supply of clean air. The 990G's big-capacity, polyester fibre air filter does that job day in and day out. And it can be cleaned and re-used many times. The 990G's new, heavy-duty clutch can take any cutting abuse. Compact muffler has spark arrestor which withstands up to 2,000°F. All the controls are "grouped" for fast, easy operation. Centered bar and pistol grip give you more accurate felling. Only 27 pounds*, the 990G will fell trees up to 10 feet in diameter. Choice of 2.8 or 3.5 to 1 gear ratios. Available with straight blades 19" to 60", 16" plunge-cut bow and clearing bar.

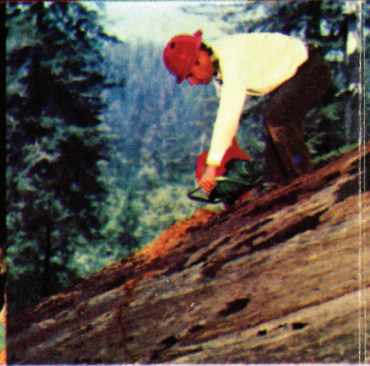
Own this gear drive saw for as little as \$7.60 weekly, after small down payment.

*less bar and chain

Makes Every Woodcutting Job Faster, Easier, More Profitable



Clearing for construction. You can cut flush with the ground, eliminating ugly stumps and saving you additional work. A Homelite will quickly pay for itself whether you're clearing to build or for roads and firelanes.



Logging and production cutting. For years Homelite has been the first choice of the pros when it comes to picking a saw for felling big trees or pulpwood cutting. Every Homelite is packed with professional features.



Pruning and trimming. For orchards or shade trees, a lightweight, perfectly balanced Homelite chain saw gives you the power and reach to make even the most difficult cuts with comparative ease.



Repairing storm damage. You'll like the speed with which a Homelite can cut down and cut up trees that have been damaged by storms or disease. The smooth, any-position cutting of a Homelite makes this job an easy one.



Cutting for cash. You'll find that you can make good money by harvesting trees as a cash crop. Many have earned as much as \$5,000 a year in extra income from part-time cutting with a Homelite chain saw.



Cutting firewood and fenceposts. You can cut more firewood and fenceposts with your Homelite in one hour than two men with a hand saw can cut all day. You'll be pleased with the speed and power of your Homelite.

HOMELITE

1. Safety filler cap with one-way no-leak valve for maximum protection.

2. Large-capacity fuel tank, with easy-to-replace, inexpensive fuel filter for long, trouble-free operation.

3. Polyester fiber air filter. Prevents particles larger than 5 millionths of an inch from getting through. Stays clean longer, can be cleaned many times and reused.

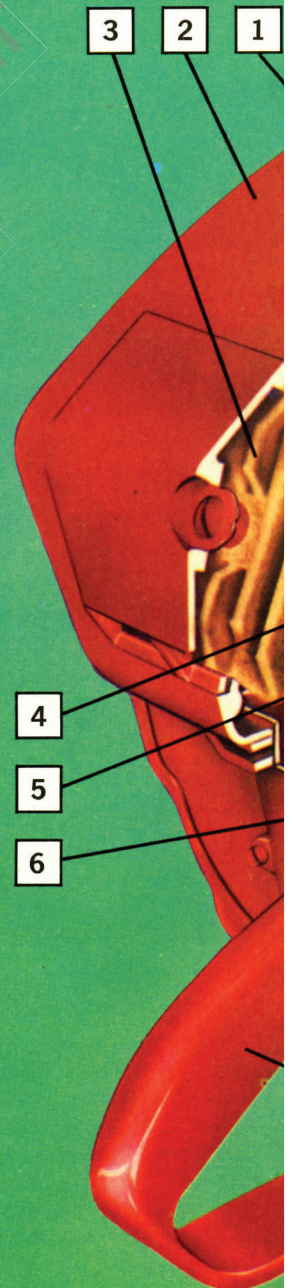
4. Coil and condenser totally enclosed for all-season, any climate starting.

5. Points protected in waterproof, dustproof box to provide top efficiency.

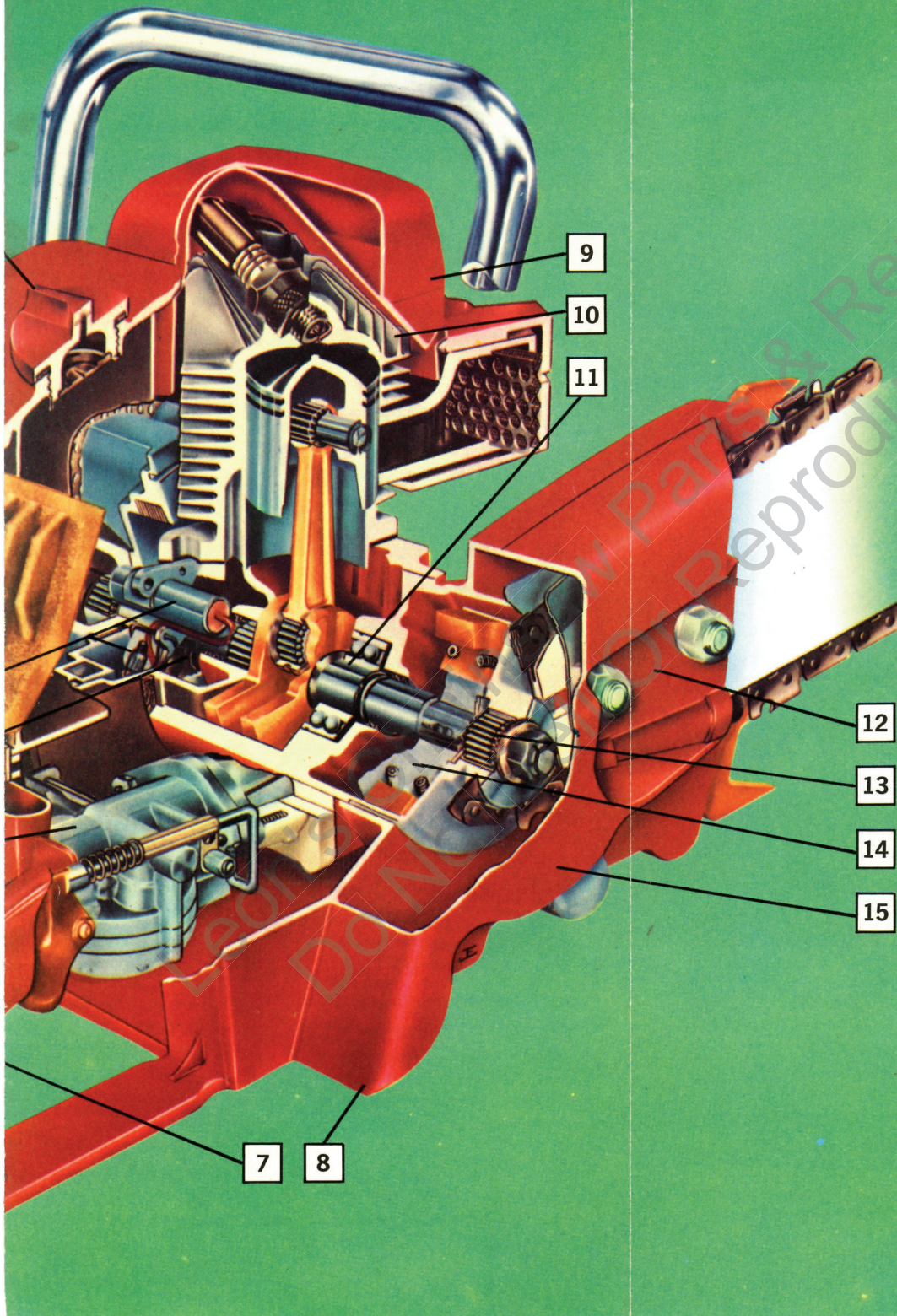
6. Aircraft-type carburetor assures full cutting power in any operating position.

7. Hand contoured pistol grip for comfortable all-position cutting.

8. Safety chain guard throws chips and twigs down and out to maintain high efficiency.



TE Chain Saw Features



9. Cylinder shield protects spark plug, assures even cylinder cooling.

10. Aircraft-type one piece cylinder for smooth, rapid heat dissipation, superior performance.

11. Drop-forged, precision machined counterbalanced crankshaft stands up to rugged abuse.

12. Positive, simple-to-adjust chain tension assures long chain life.

13. Precision ball and needle bearing throughout for long life, low maintenance.

14. Automatic clutch never needs adjustment. Drives chain only when operator presses throttle, stops chain as soon as throttle is released.

15. Die cast aluminum and magnesium engine components provide greatest possible strength, toughness, light weight.

HOMELITE Accessories



You get the most out of your Homelite when you use genuine Homelite accessories.

Homelite oil, hard hats, gasoline can

Homelite oil burns clean, gives proper lubrication and peak engine power. Since it is a rich green, it leaves no doubt whether you have a gas-oil mixture or not. A high-strength, impact-resistant Homelite safety hat should always be part of your equipment. A sturdy, bright red Homelite gasoline can is ideal for carrying or storing extra fuel.

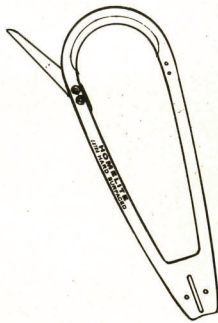
Homelite guide bars

Each Homelite guide bar has an electronically hardened track to reduce wear on rails, prolong bar and chain life. Specially heat treated steel gives maximum toughness at bottom of slot where it counts most. Complete chrome plating assures extra corrosion resistance, extra long bar life. All Homelite bars have an individually stamped serial number which registers and guarantees them against defects in material and workmanship for a period of 60 days. Homelite bars are interchangeable and can be used with either gear drive or direct drive models.

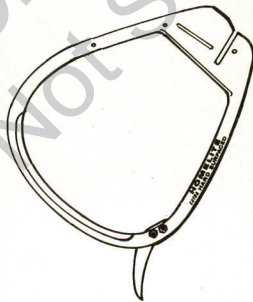
You have a choice of Homelite guide bars with either a Perma-Hard tip or a Roll-O-Nose.

HOMELITE Attachments

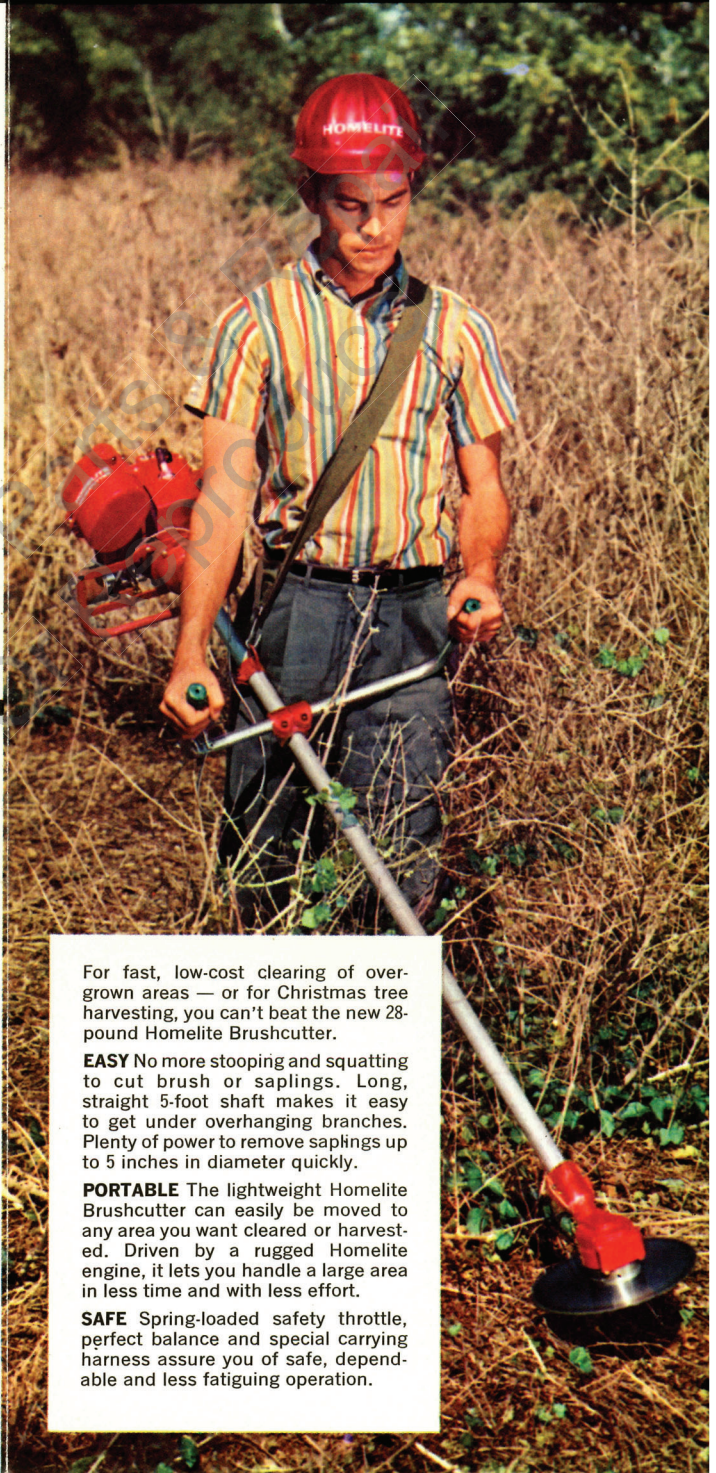
HOMELITE Brushcutter



Clearing bar
Here is an attachment that gives you a fast way to clean out small trees and saplings. The light weight, balance and long reach of a Homelite clearing bar will take the backache out of your limbing and bucking, too.



Plunge-cut bow
Ends bending and stooping when bucking. The plunge-cut bow is the ideal way for cutting pulpwood. You'll get top production with the minimum of effort. No matter what the cut, you'll not be bothered by binding.



For fast, low-cost clearing of overgrown areas — or for Christmas tree harvesting, you can't beat the new 28-pound Homelite Brushcutter.

EASY No more stooping and squatting to cut brush or saplings. Long, straight 5-foot shaft makes it easy to get under overhanging branches. Plenty of power to remove saplings up to 5 inches in diameter quickly.

PORTABLE The lightweight Homelite Brushcutter can easily be moved to any area you want cleared or harvested. Driven by a rugged Homelite engine, it lets you handle a large area in less time and with less effort.

SAFE Spring-loaded safety throttle, perfect balance and special carrying harness assure you of safe, dependable and less fatiguing operation.

HOMELITE SERVICE

... where you live



Over 4,500 Homelite dealers in the United States and Canada are factory trained to give you fast, local service. These dealers are backed by a nationwide network of 58 Homelite Factory Branch Offices, completely stocked and equipped to assure every Homelite customer prompt, efficient service. This trained, local service means that your Homelite equipment is kept working for you at all times.

Manufacturers of

Chain Saws • Power Mowers • Pumps • Generators • Blowers
Kart Engines • Outboard Motors

HOMELITE A **Textron** DIVISION



PORT CHESTER, NEW YORK

DOUGLAS MARINE

ON HIGHWAY 55 - ANN ANDALE, MINN.
PHONE 9390 - MPLS. PHONE TA 3 8937