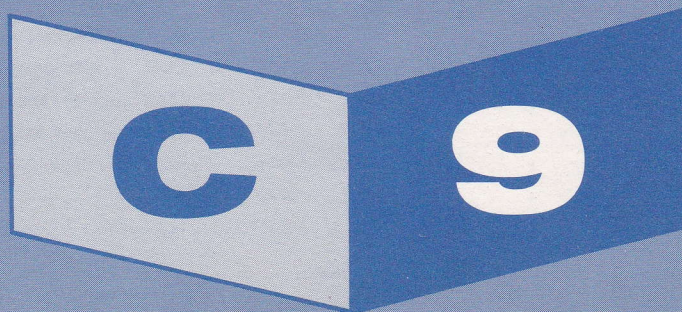
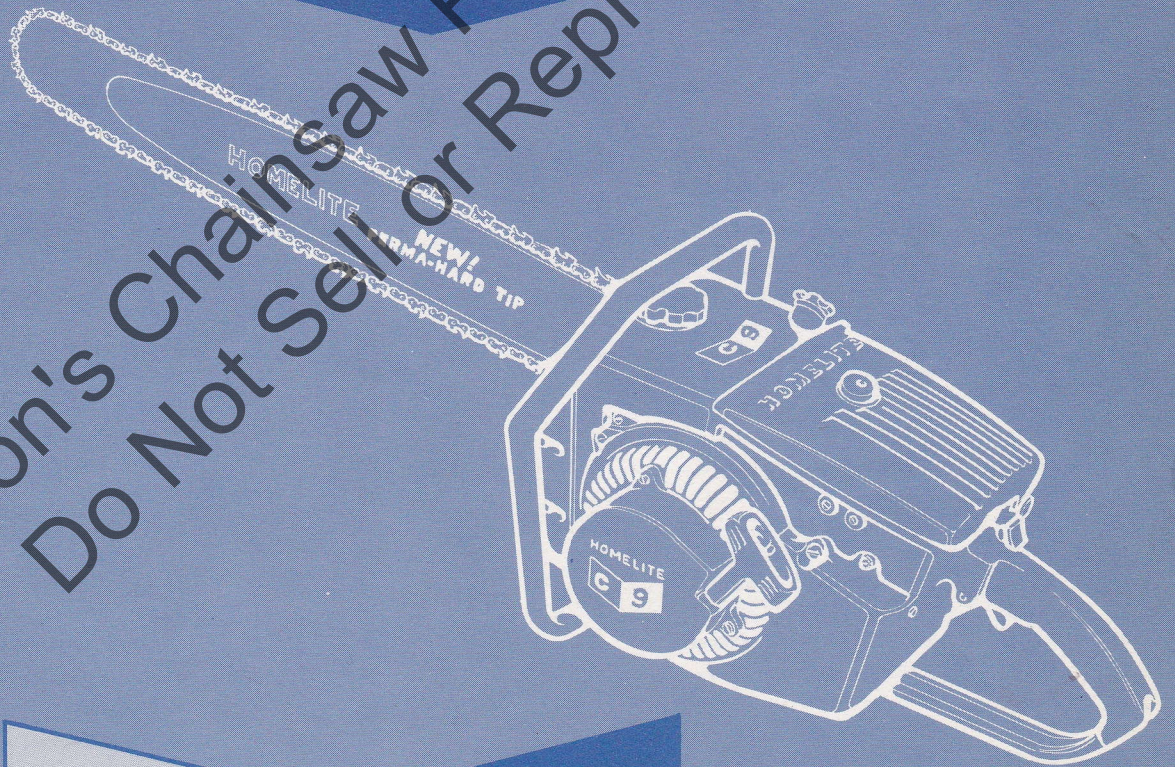


HOMELITE

Chain Saw

Leon's Chainsaw Parts & Repair
Do Not Sell Or Reproduce



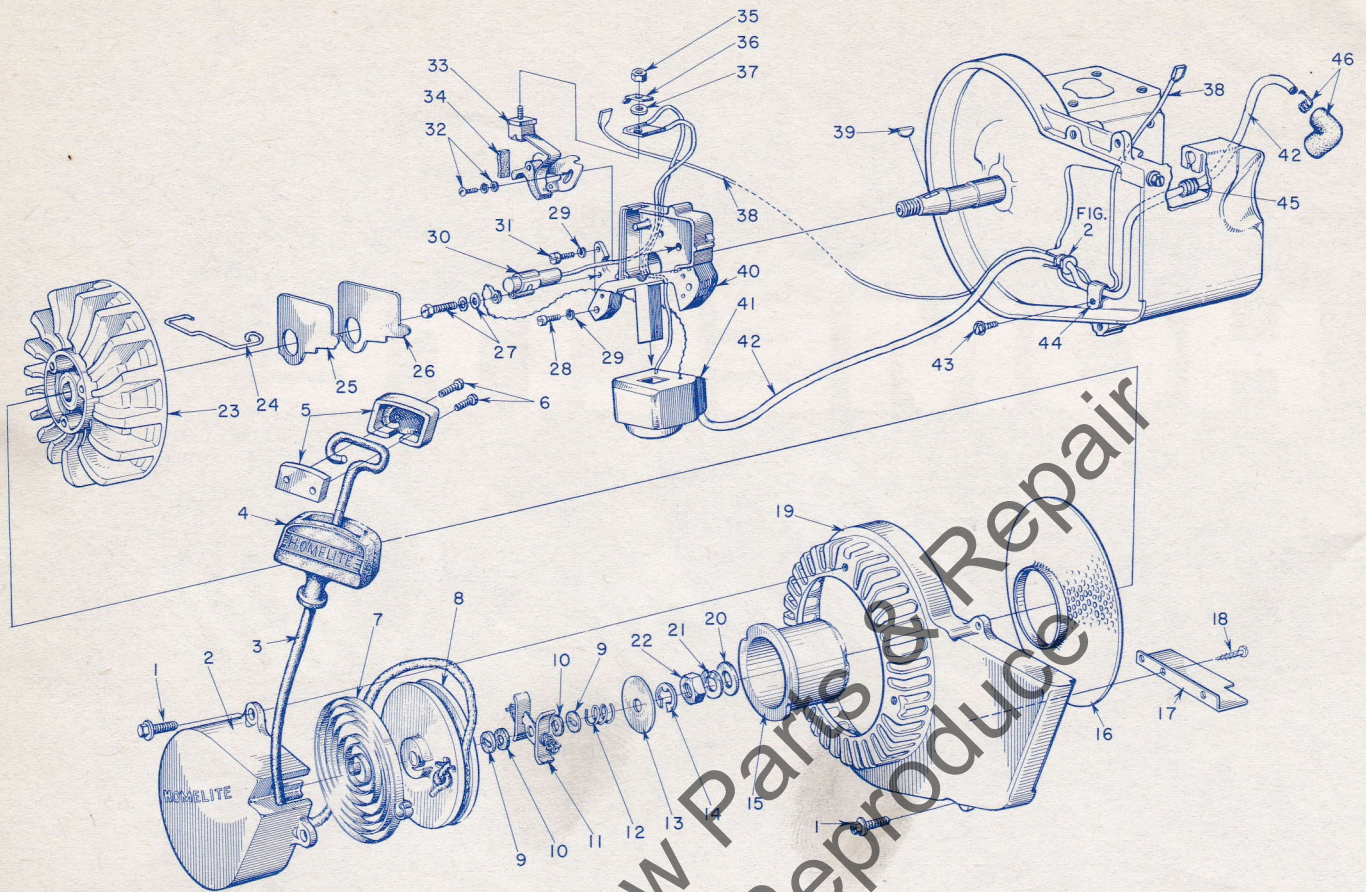


FIGURE 1

Index No.	Part No.	Description	No. Required	Index No.	Part No.	Description	No. Required
	58641	DECAL — Homelite, C-9	1	24	55980	CLAMP — dust cover	1
1	80867	SCREW — hex hd., #12-24 x 3/4	7	25	55979	COVER — dust	1
2	A-58502-1	COVER — pulley w/2 roll pins	1	26	55978-2	GASKET — dust cover	1
3	55898	ROPE — starting	1	27	57750	SCREW GROUP — condenser fastening	1
4	55937	GRIP — starting	1	28	80660	SCREW — fil. hd., 10-24 x 7/8	2
5	A-56081	INSERT — grip w/screws	1	29	83046	WASHER — lock, #10	3
		Includes		30	55987	CONDENSER — with terminal	1
6	80619	SCREW	2	31	80595	SCREW — fil. hd., 10-24 x 1/2	1
7	56451-1	SPRING — rewind	1	32	57749	SCREW GROUP — point fastening	1
8	56452	PULLEY — starter	1	33	A-58165	BREAKER POINTS (set)	1
9	56456	WASHER — brake	2			Includes	
10	56457	WASHER — fibre	2	34	55984	WICK — felt	1
11	A-57647	FRICITION SHOE ASSEMBLY	1	35	55982	NUT — terminal	1
12	56455	SPRING — brake	1	36	57733	TAB — ground	1
13	76436	WASHER — brake retainer	1	37	55983	WASHER — terminal	1
14	90618	RING — retaining	1	38	A-58321	LEAD — ground w/terminals	1
15	56441	CUP — starter	1	39	75078	KEY — rotor	1
16	58294	SCREEN — rotary	1	40	57744	BOX — breaker, w/core	1
17	58408	BAFFLE — fan housing	1	41	55986-A	COIL — with ground terminal	1
18	80548	SCREW — self tap	3	42	58382	LEAD — high tension	1
19	58171-1	HOUSING — fan	1	43	80869	SCREW — hex hd., 10-24 x 3/8	1
20	84055	WASHER — flat aluminum, 7/16	1	44	56014	CLAMP — lead	1
21	83019	WASHER — lock, 7/16	1	45	60929	GROMMET	1
22	81110	NUT — hex jam, 7/16-20	1	46	A-55373	TERMINAL — (sparky)	1
23	57568-A	ROTOR	1				

Available: — Replacement starter assembly #A-58384-1, composed of index #2 through #16.

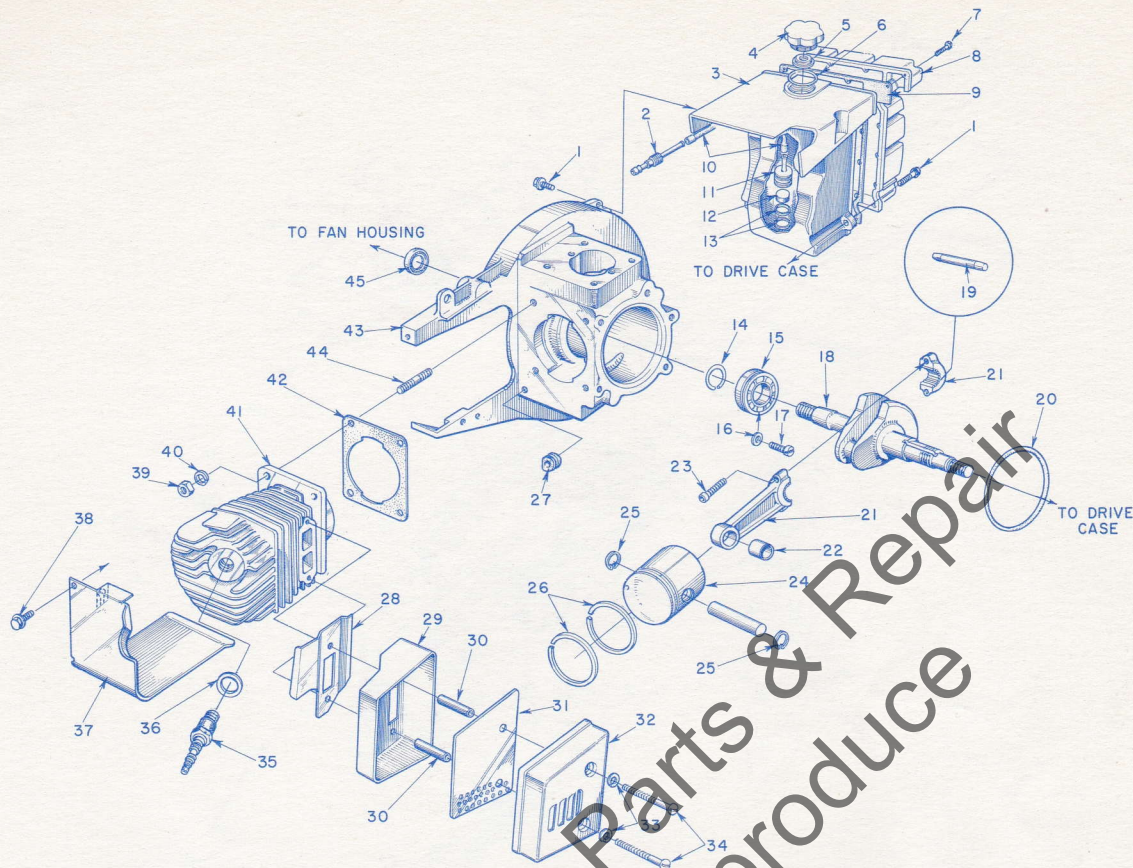


FIGURE 2

Index No.	Part No.	Description	No. Required	Index No.	Part No.	Description	No. Required
1	80867	SCREW — hex hd., 12-24 x 3/4	1	25	55095	RING — pin retaining	2
2	58364	FITTING — outlet (fuel line)	1	26	55537	RING — piston	2
3	58172-1	TANK — fuel	1	27	58318	GROMMET — lead	1
4	A-58368	CAP — fuel tank	1	28	58639	DEFLECTOR — air	1
5	56865	Includes VALVE — relief	1	29	A-58419	BODY — muffler	1
6	58395	"O" RING	1	30	58424	TUBE — baffle	2
7	80789	SCREW — rd. hd., #6 x 7/16	15	31	58423	BAFFLE — muffler	1
8	58173-1	COVER — fuel tank	1	32	58425	CAP — muffler	1
9	58367	DECAL — "C-9" (on cover)	1	33	83056	WASHER — lock, #12	2
10	55805	GASKET — tank cover	1	34	80881	SCREW — rd. hd., 12-24 x 2 1/4	2
11	A-56200	SLEEVE — flexible	1	35	40190-5	SPARK PLUG	1
12	74374	STRAINER — outlet w/brass mesh	1	Includes			
13	56196	Includes FILTER	1	36	25038	GASKET	1
14	58319	BUMPER	2	37	58187-1	CYLINDER SHIELD	1
15	58190-S	RING — retaining	1	58702	DECAL — "Starting Instructions"	1	
16	83061	BEARING — ball	1	80869	SCREW — hex hd., 10-24 x 7/8	2	
17	19238-3	WASHER — lock	2	81065-2	NUT — hex, 1/4-28	4	
18	58592	SCREW — bearing retaining	2	83009	WASHER — lock, 1/4	4	
19	AA-55280	CRANK SHAFT	1	41	58175	CYLINDER	1
20	58329	ROLLERS — set of 27	1	42	58292	GASKET — cylinder	1
21	AA-55195-A	"O" RING	1	43	A-58317-A1	CRANKCASE	1
22	55196	CONNECTING ROD	1	Includes			
23	80805	Includes BEARING — needle	1	44	55871	STUD	4
24	A-58674	SCREW — socket hd., 8-32 x 7/16	2	45	58308	SEAL — garlock	1
		PISTON AND PIN	1				

*SPECIAL TOOLS

Part No.	Description	Part No.	Description
AA-22560	MAGNETO ROTOR REMOVER ASSEMBLY	23139	ASSEMBLY TOOL — clutch drum bearing
23136	BODY — assembling fixture	23391-2	ASSEMBLY TOOL — needle bearing
23693	SLEEVE (for garlock seal)	23671	ASSEMBLY TOOL — drive case seal
22820-2	ADAPTER — bearing assembling	22828	PLIERS — for Tru-arc ring (piston)
A-23672	JACKSCREW ASSEMBLY	23234	NEEDLE BEARING TOOL (conn. rod)
23670	PLATE — shaft aligning	23528	WRENCH — socket screw (conn. rod)
23233-1	GARLOCK SEAL ASSEMBLY	22771	SPRAY CAN — red paint
		23343	SPRAY CAN — green paint

*When ordered only.

22808

COMBINATION WRENCH

Always furnish saw model and serial number when ordering parts.

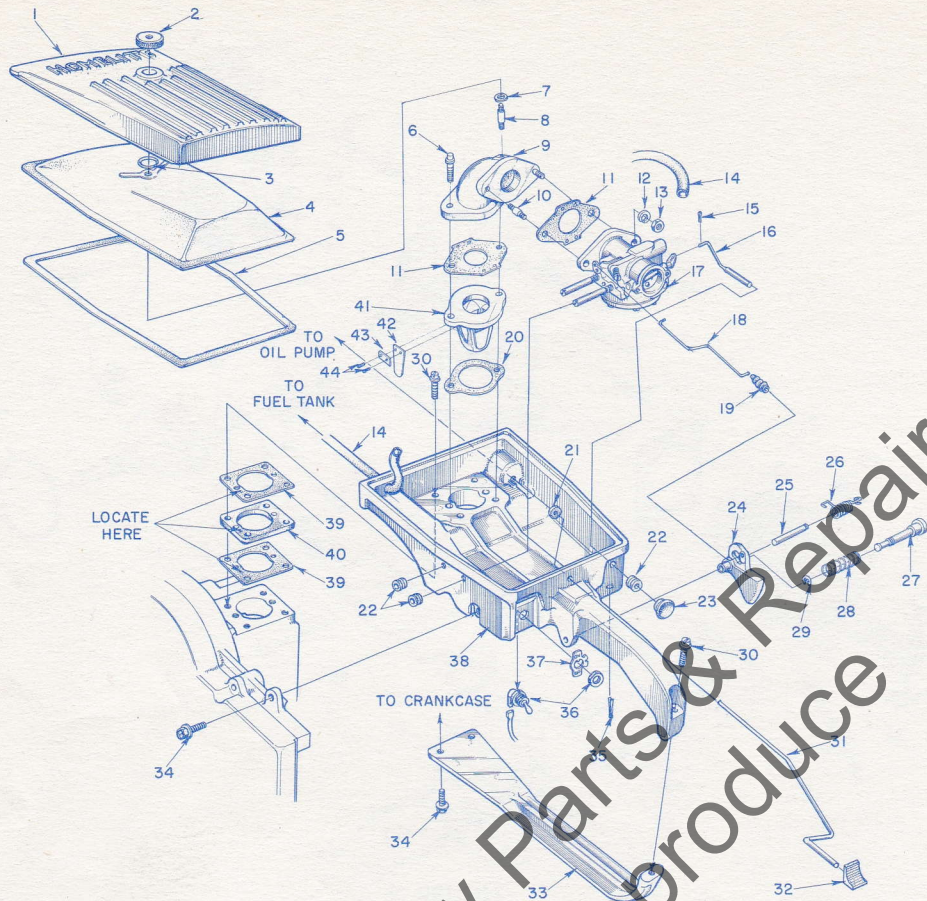


FIGURE 3

Index No.	Part No.	Description	No. Required	Index No.	Part No.	Description	No. Required
1	A-58372-1	COVER — air filter	1	22	58362	GROMMET	3
		Includes		23	57289-1	BUTTON — choke rod	1
2	58373	NUT — cover	1	24	58181	TRIGGER — throttle	1
3	58319	RING — retaining	1	25	58353	SHAFT — throttle trigger	1
4	58188	ELEMENT — air filter	1	26	58352	SPRING — throttle trigger	1
5	58350	GASKET — filter element	1	27	58404	PIN — throttle lock	1
6	80882	SCREW — hex hd., 1/4-20 x 1 1/2	2	28	58405	SPRING — lock	1
7	58392	GASKET — mounting stud	1	29	58409	RING — retaining	1
8	58361	STUD — cover mounting	1	30	80864	SCREW — hex hd., 12-24 x 1	5
9	58183	ELBOW — intake	1	31	58356	ROD — oil pump	1
10	27464	STUD — carburetor mounting	2	32	58357	BUTTON — rod (oil pump)	1
11	55553-2	GASKET — carburetor	2	33	58185-1	BRACE — throttle handle	1
12	83009	WASHER — lock, 1/2	2	34	80867	SCREW — hex hd., 12-24 x 3/4	3
13	81013	NUT — hex, 1/4-20	2	35	86301	COTTER PIN — 1/16 x 1/2	1
14	A-56379	LINE — fuel	1	36	A-57650-3	SWITCH — toggle w/nut	1
15	86324	COTTER PIN — 1/32 x 1/2	1	37	72085-A	PLATE — indicating (ON-OFF)	1
16	A-58354	ROD — choke	1	38	58179-1	THROTTLE HANDLE — carburetor and filter housing	1
17	*A-58360-A	CARBURETOR ASSEMBLY	1		58476	DECAL — "LO-HI"	1
	58681	REPAIR KIT — carburetor (includes Gasket Set)	1	39	58343	GASKET — spacer	2
	58534	GASKET SET — carburetor	1	40	58391	SPACER	1
18	58351	ROD — throttle	1	41	55932	ADAPTER — reed valve	1
19	58348	BOOT — throttle rod	1	42	55941	REED	4
20	55946	GASKET — adapter	1	43	55942	PLATE — reed	4
21	58394	WASHER — felt (pump rod)	1	44	80658	SCREW — pan hd., 4-40 x 3/16	8

*Refer to Carburetor Parts List #23692-A

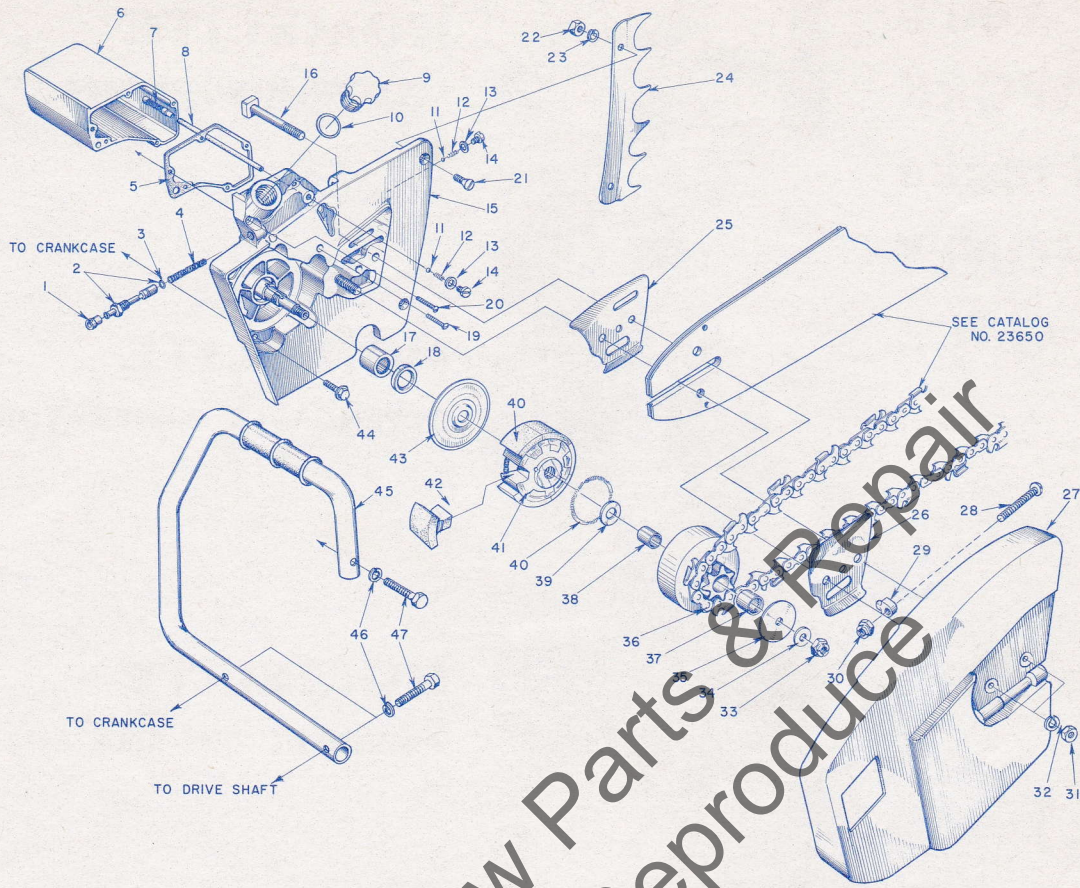


FIGURE 4

Index No.	Part No.	Description	No. Required	Index No.	Part No.	Description	No. Required
1	58337	CONNECTOR — oil pump	1	26	56872-B	PLATE — guide bar (outer)	1
2	A-57834-4	PLUNGER — oil pump	1	27	A-58683	COVER — drive case	1
3	74388	"O" RING	2			Includes	
4	71762	SPRING — plunger	1	28	80617	SCREW — rd. hd., 5/16-18 x 2	1
5	58342	GASKET — oil reservoir	1	29	55613	PIN — adjusting	1
6	A-58341	RESERVOIR — oil	1	30	81123	NUT — hex lock, 5/16-18	1
7	AA-55259-A	FILTER — oil	1			DECAL — "Direct Drive"	1
8	58340	LINE — oil filler	1	31	81089-2	NUT — hex, 3/8-16	2
9	A-58390	CAP — oil filler	1	32	83018	WASHER — lock, 3/8	2
		Includes		33	81192	NUT — hex, 3/8-24	1
10	58393	"O" RING	1	34	84010	WASHER — flat, 3/8	1
11	25527	BALL — check	2	35	55163-1	WASHER — thrust	1
12	55288-A	SPRING — check valve	2	36	*A-57344	SPROCKET AND DRUM — 7 tooth .404 pitch (open type)	1
13	58338	GASKET — cap	2			Includes	
14	58339	CAP — check valve	2	37	55664	BEARING — needle	1
15	A-58333-1	DRIVE CASE	1	38	55661	RACE — inner	1
		Includes		39	55660-1	WASHER — thrust	1
16	58334	BOLT — guide bar	2	40	55123-C	SPRING — clutch	2
17	74251	BEARING — needle	1	41	58546-1	SPIDER — clutch (threaded)	1
18	56256	SEAL garlock	1	42	55076-1A	SHOE — clutch	6
19	80790	SCREW — rd. hd., #6 x 3/4	4	43	56101-A	COVER — clutch	1
20	80622	SCREW — rd. hd., #6 x 7/8	1	44	80867	SCREW — hex hd., #12-24 x 3/4	5
21	80053	SCREW — flat hd., 1/4-20 x 3/4	2	45	A-58650	HANDLE BAR — flush cut	1
22	81053	NUT — hex, 1/4-20	2	46	83003	WASHER — lock, 5/16	3
23	83009	WASHER — lock, 1/4	2	47	80087	SCREW — hex hd., 5/16-18 x 1 1/2	3
24	58396	BUMPER — spiked	1				
25	56871-A	PLATE — guide bar (inner)	1				

*Check type and number of teeth on sprocket before ordering.

OPTIONAL — available on order:

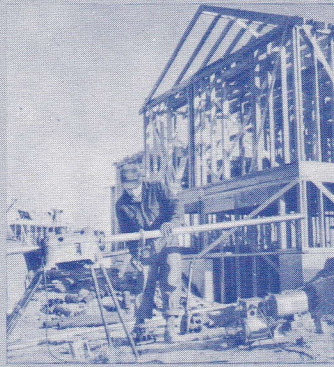
A-56019	SPROCKET AND DRUM — 6 tooth, 1/2" pitch (open type)	A-57363-A	SPROCKET AND DRUM — 7 tooth, 7/16" pitch (rim type)
A-56377	SPROCKET AND DRUM — 7 tooth, 7/16" pitch (open type)	77403	Includes BEARING — needle

Always furnish saw model and serial number when ordering parts.

**You'll
SPEED WORK
and make
MORE MONEY
with...**



**HOMELITE
SELF-PRIMING PUMPS**



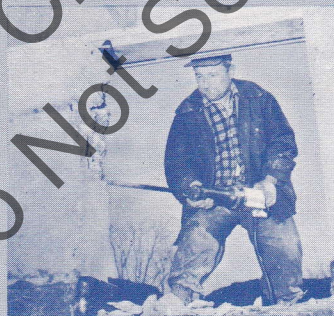
**HOMELITE
DEPENDABLE GENERATORS**



**HOMELITE
POWERFUL ONE-MAN CHAIN SAWS**



**HOMELITE
ONE-MAN CONCRETE VIBRATORS**



**HOMELITE — BOSCH (Germany)
ELECTRIC BUILDER'S HAMMERS**

All Powered By Famous HOMELITE Engines

Homelite's two-cycle gasoline engines are the most efficient and dependable units of their kind ever built. Their two-cycle design, developed to perfection by Homelite engineers over the past 35 years, gives maximum power for the least weight because power is produced at every piston down stroke. As an added advantage, this design requires fewer moving parts which means greater dependability and lower maintenance



Printed in United States of America

Part No. 23709

10M-12-62

HOMELITE

A **textron** DIVISION

PORT CHESTER, N. Y.

Illustrated in **INSPECTIVE** and
published by **PURNELL COMPANY, INC.**
Boston, Mass.