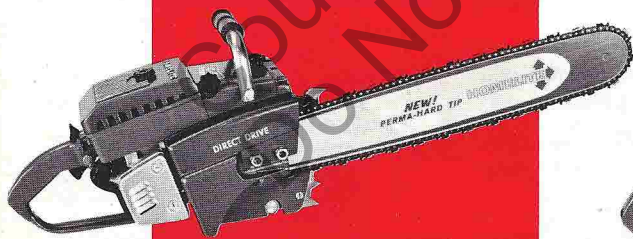


HOMELITE

C-91
CONVERTIBLE DRIVE

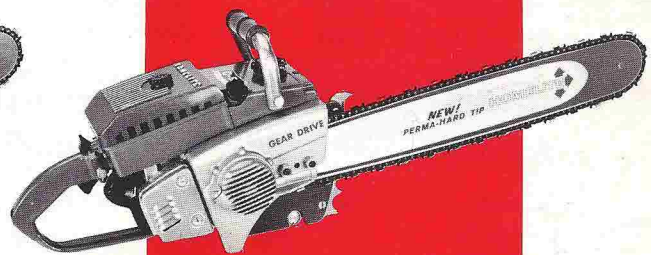


Convertible to Gear Drive in Minutes . . .



DIRECT DRIVE

CHAIN SPEED (under load)
7 Tooth .404" pitch
sprocket 2828 ft./min.



GEAR DRIVE

GEAR RATIO 1 : 2.9
CHAIN SPEED (under load)
7 Tooth 1/2" pitch
sprocket 1208 ft./min.
8 Tooth .404" pitch
sprocket 1115 ft./min.

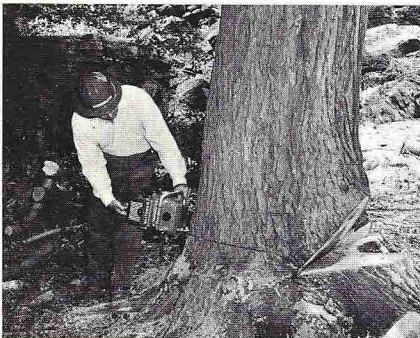
Available with:

8 Tooth .404" pitch sprocket
7 Tooth 1/2" pitch sprocket

HOMELITE SPECIFICATIONS

C-91 CONVERTIBLE DRIVE

ENGINE



ENGINE TYPE — HOMELITE two cycle, loop scavenged single cylinder

BORE — $2\frac{1}{16}$ "

STROKE — $1\frac{1}{16}$ "

DISPLACEMENT — 5.22 cubic inch

INTAKE VALVE — High Performance Pyramid Reed

COMPRESSION RATIO — 6.7:1

IGNITION TIMING — 30° BTDC Static

ENGINE SPEED — Under load — 6000-6500 RPM

CLUTCH ENGAGING SPEED AND TYPE — 2800 RPM — 6 shoe double spring centrifugal

BREAKER POINT SETTING AND LOCATION — .015" — protected in sealed box under flywheel

SPARK PLUG TYPE AND GAP — Champion J-6-J — .025"

THROTTLE CONTROL — Trigger in handle with throttle lock

BEARINGS — Needle and Ball Bearings

CHAIN TYPE — .404 Pitch #52 OMark Chipper

SPROCKET — 7 Tooth, .404 Pitch

CHAIN SPEED UNDER LOAD — 2828 Feet per Minute

FEATURES



CARBURETOR — Tillotson All-Position Diaphragm with integral fuel pump and fuel strainer... external high, low, idle speed adjustments

STARTER — Homelite Recoil Positive Engagement with Replaceable Starter Rope Bushing

MAGNETO — High tension — water and dust proof with protected coil

FUEL FILTER — All-Position Felt Pick-up in fuel tank, wire mesh screen in carburetor

AIR FILTER — Protected Micro Mesh Polyester Fiber for long service life

MUFFLER — Quiet Type — with baffled spark arrestor

CHAIN OILER TYPE AND CAPACITY — Positive Manual 8 oz. reservoir w/filter

DATA



WEIGHT LESS BAR AND CHAIN — 19 lbs.

FUEL TANK CAPACITY — 42 oz. with pressure sensitive replaceable automatic vent

FUEL TYPE AND MIXTURE — Regular gasoline mixed with HOMELITE OIL or SAE 30 motor oil 16:1 ($\frac{1}{2}$ pint per gallon)

BAR SIZES — 14, 17, 21, 25, 30

ATTACHMENTS — Bow, Clearing, and Utility Guides

HANDLE BAR TYPES — Flush cut, or wrap-around plastic grip

HOMELITE

A **textron** DIVISION
PORT CHESTER, N.Y. U.S.A.

MANUFACTURERS OF GASOLINE-ENGINE-DRIVEN PUMPS, GENERATORS, RIDE-ON LAWN MOWERS, OUTBOARDS, CHAIN SAWS, AND CIRCULAR SAWS