

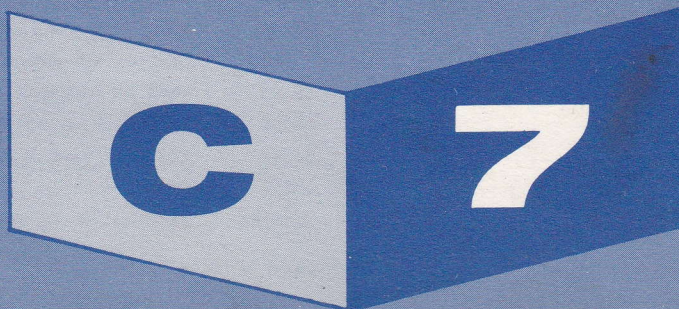
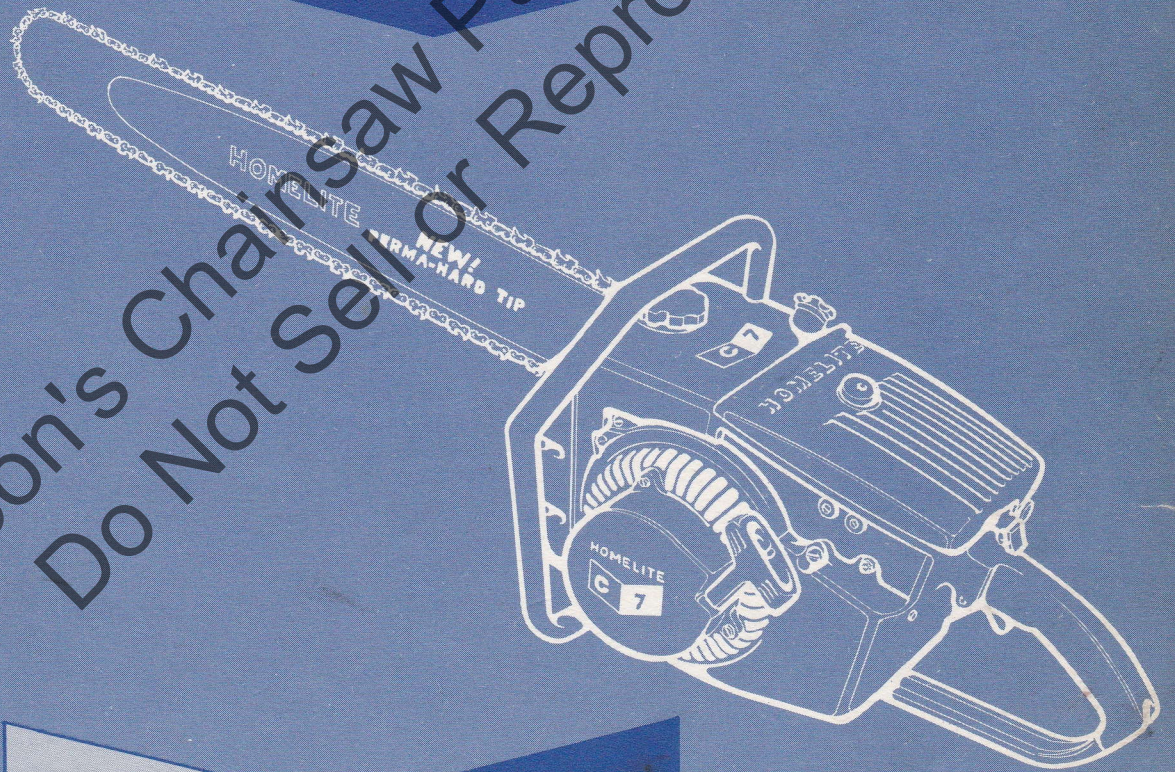
PRICE .25

December 1962

HOMELITE

Chain Saw

Leon's Chainsaw Parts & Repair
Do Not Sell or Reproduce



PARTS LIST

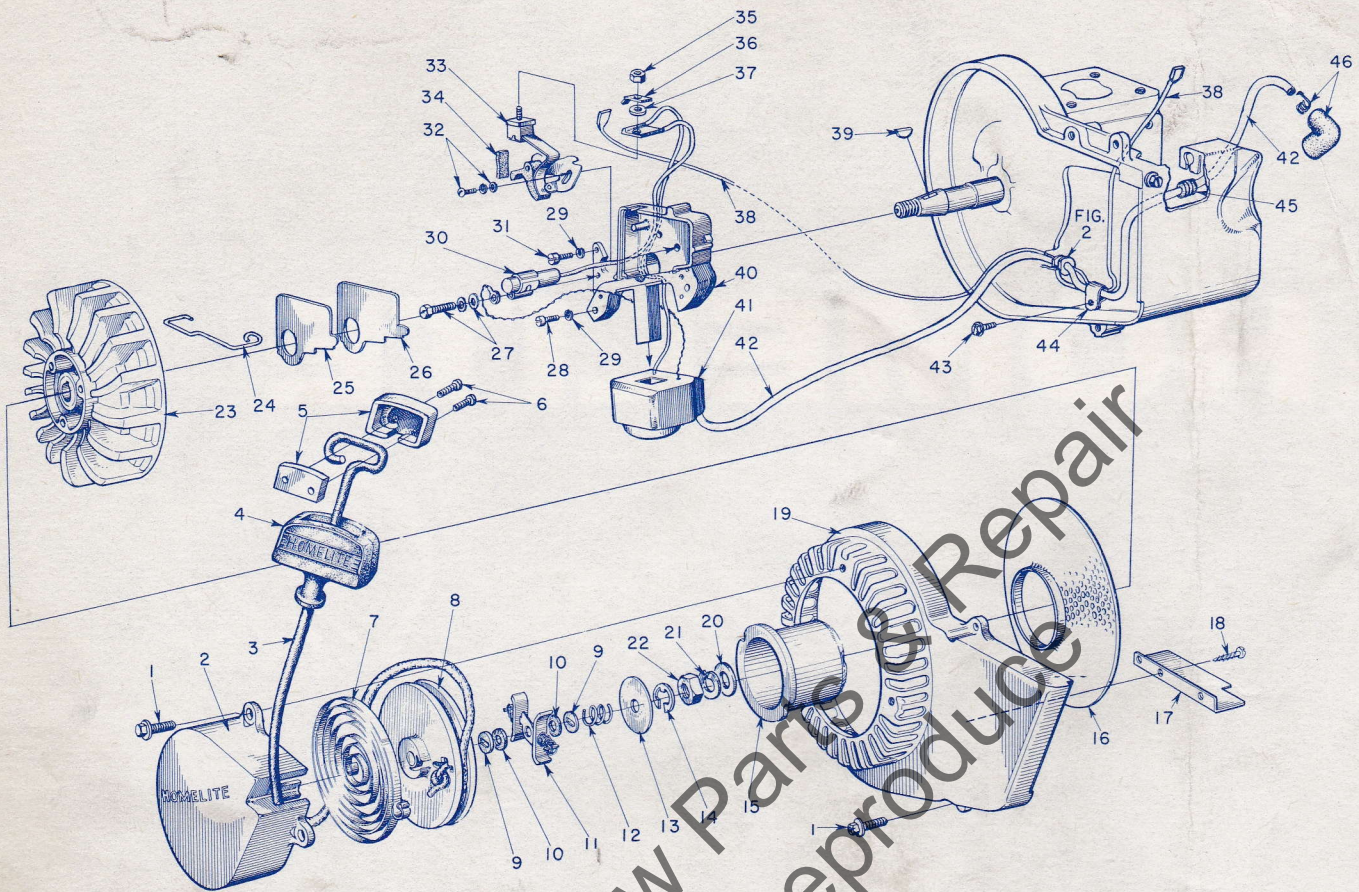


FIGURE 1

Index No.	Part No.	Description	No. Required	Index No.	Part No.	Description	No. Required
	58636	DECAL — Homelite, C-7	1	24	55980	CLAMP — dust cover	1
1	80867	SCREW — hex hd., #12-24 x 3/4	7	25	55979	COVER — dust	1
2	A-58502-1	COVER — pulley w/2 roll pins	1	26	55978-2	GASKET — dust cover	1
3	55898	ROPE — starting	1	27	57750	SCREW GROUP — condenser fastening	1
4	55937	GRIP — starting	1	28	80660	SCREW — fil. hd., 10-24 x 7/8	2
5	A-56081	INSERT — grip w/screws	1	29	83046	WASHER — lock, #10	3
		Includes		30	55987	CONDENSER — with terminal	1
6	80619	SCREW	2	31	80595	SCREW — fil. hd., 10-24 x 1/2	1
7	56451-1	SPRING — rewind	1	32	57749	SCREW GROUP — point fastening	1
8	56452	PULLEY — starter	1	33	A-58165	BREAKER POINTS (set)	1
9	56456	WASHER — brake	2			Includes	
10	56457	WASHER — fibre	2	34	55984	WICK — felt	1
11	A-57647	FRICITION SHOE ASSEMBLY	1	35	55982	NUT — terminal	1
12	56455	SPRING — brake	1	36	57733	TAB — ground	1
13	76436	WASHER — brake retainer	1	37	55983	WASHER — terminal	1
14	90618	RING — retaining	1	38	A-58321	LEAD — ground w/terminals	1
15	56441	CUP — starter	1	39	75078	KEY — rotor	1
16	58294	SCREEN — rotary	1	40	57744	BOX — breaker, w/core	1
17	58408	BAFFLE — fan housing	1	41	55986-A	COIL — with ground terminal	1
18	80548	SCREW — self tap	3	42	58382	LEAD — high tension	1
19	58171-1	HOUSING — fan	1	43	80869	SCREW — hex hd., 10-24 x 3/8	1
20	84055	WASHER — flat aluminum, 7/16	1	44	56014	CLAMP — lead	1
21	83019	WASHER — lock, 7/16	1	45	60929	GROMMET	1
22	81110	NUT — hex jam, 7/16-20	1	46	A-55373	TERMINAL — (sparky)	1
23	57568-A	ROTOR	1				

Available: — Replacement starter assembly #A-58384-1, composed of index #2 through #16.

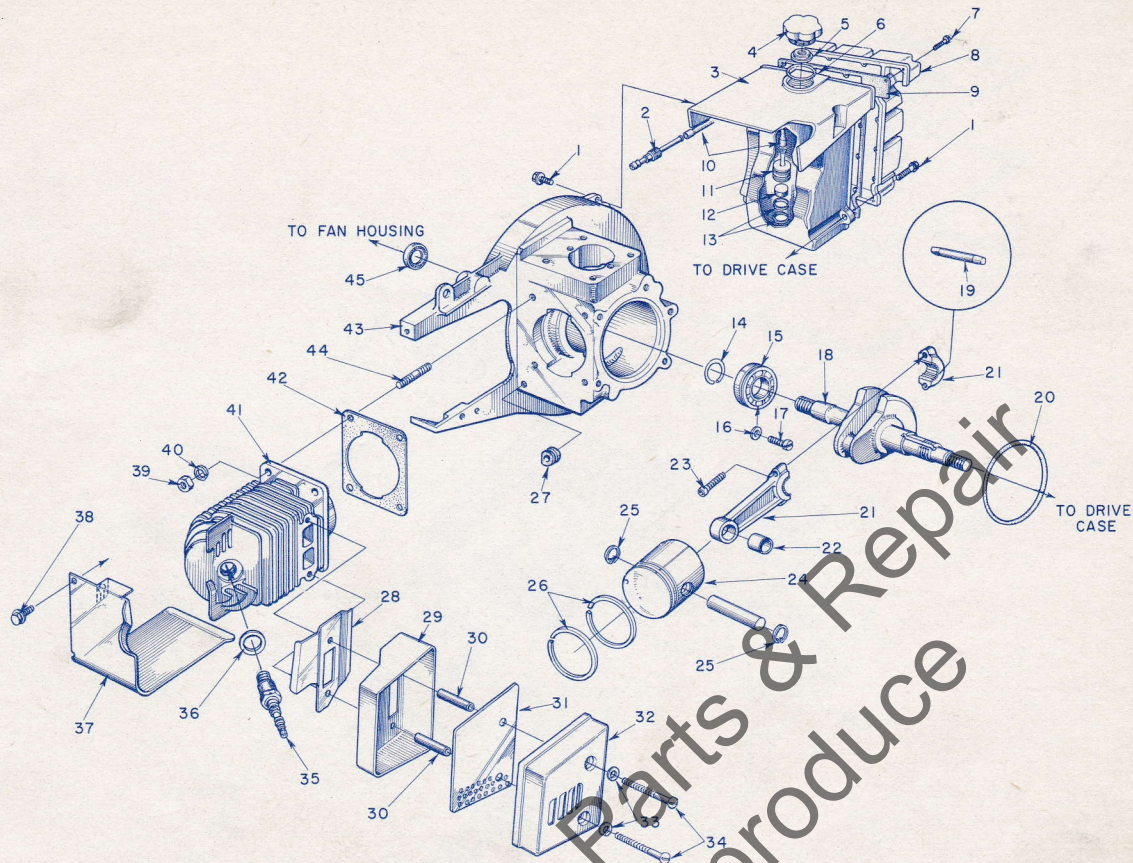


FIGURE 2

Index No.	Part No.	Description	No. Required	Index No.	Part No.	Description	No. Required
1	80867	SCREW — hex hd., 12-24 x 3/4	4	25	55095	Includes	
2	58364	FITTING — outlet (fuel line)	1	26	55038	RING — pin retaining	2
3	58172-1	TANK — fuel	1	27	58318	RING — piston	2
4	A-58368	CAP — fuel tank	1	28	58639	GROMMET — lead	1
		Includes		29	A-58419	DEFLECTOR — air	1
5	58865	VALVE — relief	1	30	58424	BODY — muffler	1
6	58395	"O" RING	1	31	58423	TUBE — baffle	2
7	80789	SCREW — rd. hd., #6 x 1/16	15	32	58425	BAFFLE — muffler	1
8	58173-1	COVER — fuel tank	1	33	83056	CAP — muffler	1
	58637	DECAL — "C-7" (on cover)	1	34	80881	WASHER — lock, #12	2
9	58367	GASKET — tank cover	1	35	40190-S	SCREW — rd. hd., 12-24 x 2 1/4	2
10	55805	SLEEVE — flexible	1			SPARK PLUG	1
11	A-56200	STRAINER — outlet w/brass nail	1			Includes	
		Includes		36	25038	GASKET	1
12	74374	FILTER	2	37	58187-1	CYLINDER SHIELD	1
13	56196	BUMPER	1		58679	DECAL — "Starting Instructions"	1
14	58319	RING — retaining	1	38	80869	SCREW — hex hd., 10-24 x 3/8	2
15	58190-S	BEARING — ball	1	39	81065-2	NUT — hex, 1/4-28	4
16	83061	WASHER — lock	2	40	83009	WASHER — lock, 1/4	4
17	19238-3	SCREW — bearing retaining	2	41	58174-A	CYLINDER	1
18	58592	CRANK SHAFT	1	42	58292	GASKET — cylinder	1
19	AA-55280	ROLLERS — set of 27	1	43	A-58317-A1	CRANKCASE	1
20	58329	"O" RING	1			Includes	
21	AA-55195-A	CONNECTING ROD	1	44	55871	STUD	4
		Includes		45	58308	SEAL — garlock	1
22	55196	BEARING — needle	1				
23	80805	SCREW — socket hd., 8-32 x 1/16	2				
24	A-58653	PISTON AND PIN	1				

*SPECIAL TOOLS

Part No.	Description	Part No.	Description
AA-22560	MAGNETO ROTOR REMOVER ASSEMBLY	23139	ASSEMBLY TOOL — clutch drum bearing
23136	BODY — assembling fixture	23391-2	ASSEMBLY TOOL — needle bearing
23693	SLEEVE (for garlock seal)	23671	ASSEMBLY TOOL — drive case seal
22820-2	ADAPTER — bearing assembling	22828	PLIERS — for Tru-arc ring (piston)
A-23672	JACKSCREW ASSEMBLY	23234	NEEDLE BEARING TOOL (conn. rod)
23670	PLATE — shaft aligning	23528	WRENCH — socket screw (conn. rod)
23233-1	GARLOCK SEAL ASSEMBLY	22771	SPRAY CAN — red paint

*When ordered only.

22808

COMBINATION WRENCH

Always furnish saw model and serial number when ordering parts.

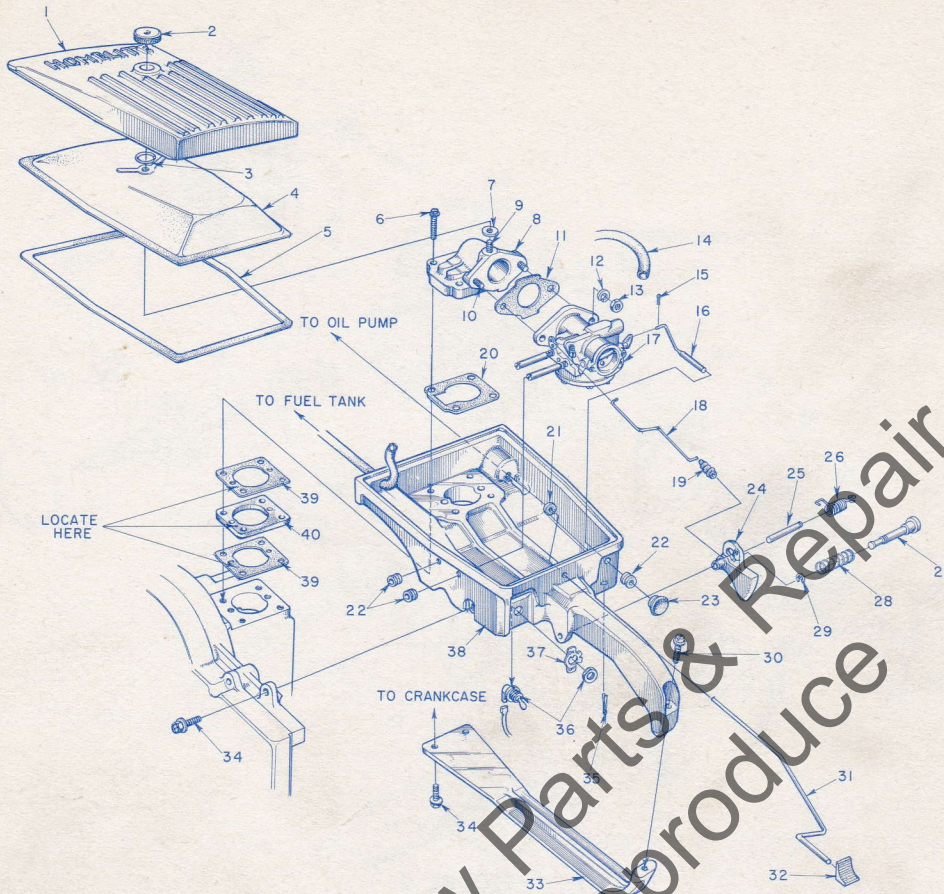


FIGURE 3

Index No.	Part No.	Description	No. Required	Index No.	Part No.	Description	No. Required
1	A-58372-1	COVER — air filter	1	20	58344	GASKET — reed valve	1
		Includes		21	58394	WASHER — felt (pump rod)	1
2	58373	NUT — cover	1	22	58362	GROMMET	3
3	58319	RING — retaining	1	23	57289-1	BUTTON — choke rod	1
4	58188	ELEMENT — air filter	1	24	58181	TRIGGER — throttle	1
5	58350	GASKET — filter element	1	25	58353	SHAFT — throttle trigger	1
6	80868	SCREW — hex hd., 2-24 x 1 1/2	4	26	58352	SPRING — throttle trigger	1
7	58392	GASKET — mounting stud	1	27	58404	PIN — throttle lock	1
8	A-58359	VALVE — reed (elbow)	1	28	58405	SPRING — lock	1
		Includes		29	58409	RING — retaining	1
9	58361	STUD — cover mounting	1	30	80864	SCREW — hex hd., 12-24 x 1	1
10	27464	STUD — carburetor mounting	2	31	58356	ROD — oil pump	1
11	55553-2	GASKET — carburetor	1	32	58357	BUTTON — rod (oil pump)	1
12	83009	WASHER — lock, 1/4	2	33	58185-1	BRACE — throttle handle	1
13	81013	NUT — hex, 1/4-20	2	34	80867	SCREW — hex hd., 12-24 x 3/4	3
14	A-56379	LINE — fuel	1	35	86301	COTTER PIN — 1/16 x 1/2	1
15	86324	COTTER PIN — 1/32 x 1/2	1	36	A-57650-3	SWITCH — toggle w/nut	1
16	A-58354	ROD — choke	1	37	72085-A	PLATE — indicating (ON-OFF)	1
17	*A-58360-A	CARBURETOR ASSEMBLY	1	38	58179-1	THROTTLE HANDLE — carburetor and filter housing	1
	58681	REPAIR KIT — carburetor (includes Gasket Set)	1		58476	DECAL — "LO-HI"	1
	58534	GASKET SET — carburetor	1	39	58343	GASKET — spacer	2
18	58351	ROD — throttle	1	40	58391	SPACER	1
19	58348	BOOT — throttle rod	1				

*Refer to Carburetor Parts List #23692-A

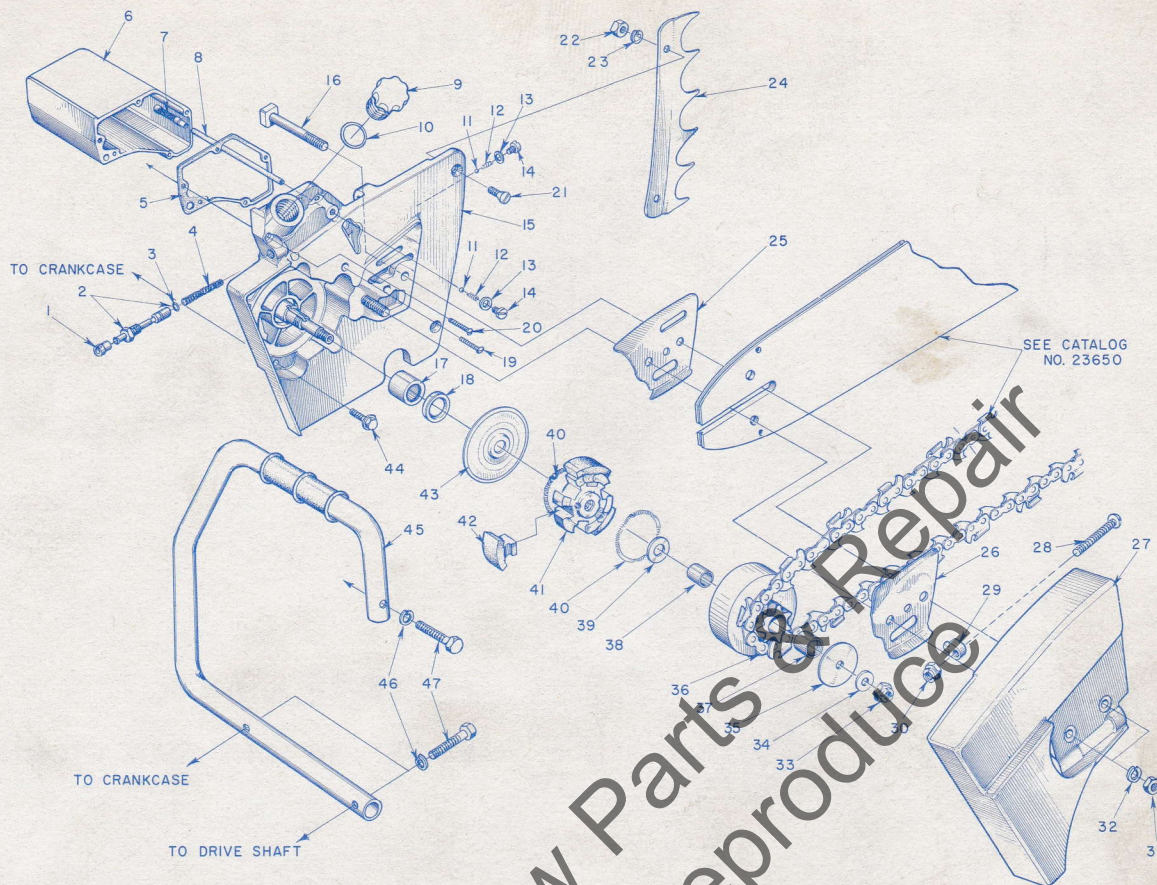


FIGURE 4

Index No.	Part No.	Description	No. Required	Index No.	Part No.	Description	No. Required
1	58337	CONNECTOR — oil pump	1	26	56872-B	PLATE — guide bar (outer)	1
2	A-57834-4	PLUNGER — oil pump	1	27	A-58378-1	COVER — drive case	1
		Includes				Includes	
3	74388	"O" RING	1	28	80617	SCREW — rd. hd., 5/16-18 x 2	1
4	71762	SPRING — plunger	1	29	55613	PIN — adjusting	1
5	58342	GASKET — oil reservoir	1	30	81123	NUT — hex lock, 5/16-18	1
6	A-58341	RESERVOIR — oil	1		58474	DECAL — "Direct Drive" (on cover)	1
7	AA-55259-A	FILTER — oil	1	31	81089-2	NUT — hex, 3/8-16	2
8	58340	LINE — oil filter	1	32	83018	WASHER — lock, 3/8	2
9	A-58390	CAP — oil filler	1	33	81192	NUT — hex, 3/8-24	1
		Includes		34	84010	WASHER — flat, 3/8	1
10	58393	"O" RING	1	35	55163-1	WASHER — thrust	1
11	25527	BALL — check	2	36	*A-57344	SPROCKET AND DRUM — 7 tooth .404 pitch (open type)	1
12	55288-A	SPRING — check valve	2			Includes	
13	58338	GASKET — cap	2	37	55664	BEARING — needle	1
14	58339	CAP — check valve	2	38	55661	RACE — inner	1
15	A-58333-1	DRIVE CASE	1	39	55660-1	WASHER — thrust	1
		Includes		40	55123-C	SPRING — clutch	2
16	58334	BOLT — guide bar	2	41	58546-1	SPIDER — clutch (threaded)	1
17	74251	BEARING — needle	1	42	55076-1A	SHOE — clutch	3
18	56256	SEAL garlock	1	43	56101-A	COVER — clutch	1
19	80790	SCREW — rd. hd., #6 x 3/4	4	44	80867	SCREW — hex hd., #12-24 x 3/4	5
20	80622	SCREW — rd. hd., #6 x 7/8	1	45	A-58650	HANDLE BAR — flush cut	1
21	80053	SCREW — flat hd., 1/4-20 x 3/4	2	46	83003	WASHER — lock, 5/16	3
22	81053	NUT — hex, 1/4-20	2	47	80087	SCREW — hex hd., 5/16-18 x 1 1/2	3
23	83009	WASHER — lock, 1/4	2				
24	58396	BUMPER — spiked (accessory)	1				
25	56871-A	PLATE — guide bar (inner)	1				

*Check type and number of teeth on sprocket before ordering.

OPTIONAL — available on order:

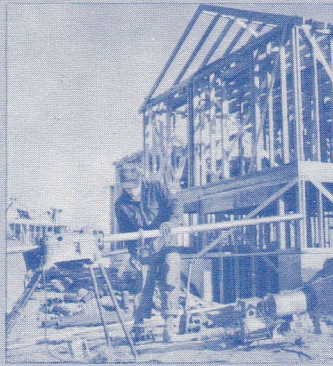
A-56019	SPROCKET AND DRUM — 6 tooth, 1/2" pitch (open type)	A-57363-A	SPROCKET AND DRUM — 7 tooth, 7/16" pitch (rim type)
A-56377	SPROCKET AND DRUM — 7 tooth, 7/16" pitch (open type)	77403	Includes BEARING — needle
A-58544	PLANETARY DRIVE KIT — .404 pitch	A-58556	PLANETARY DRIVE KIT — 1/2" pitch

Always furnish saw model and serial number when ordering parts.

**You'll
SPEED WORK
and make
MORE MONEY
with...**



HOMELITE
SELF-PRIMING PUMPS



HOMELITE
DEPENDABLE GENERATORS



HOMELITE
POWERFUL ONE-MAN CHAIN SAWS



HOMELITE
ONE-MAN CONCRETE VIBRATORS



HOMELITE — BOSCH (Germany)
ELECTRIC BUILDER'S HAMMERS

*Leon's Chainsaw Parts & Repair
Do Not Sell or Reproduce*

All Powered By Famous HOMELITE Engines

Homelite's two-cycle gasoline engines are the most efficient and dependable units of their kind ever built. Their two-cycle design, developed to perfection by Homelite engineers over the past 35 years, gives maximum power for the least weight because power is produced at every piston down stroke. As an added advantage, this design requires fewer moving parts which means greater dependability and lower maintenance



Printed in United States of America

Part No. 23708

10M-12-62

HOMELITE

A **Textron** DIVISION

PORT CHESTER, N. Y.

Illustrated in **INSPECTIVE**® and
published by PURNELL COMPANY, INC.
Boston, Mass.