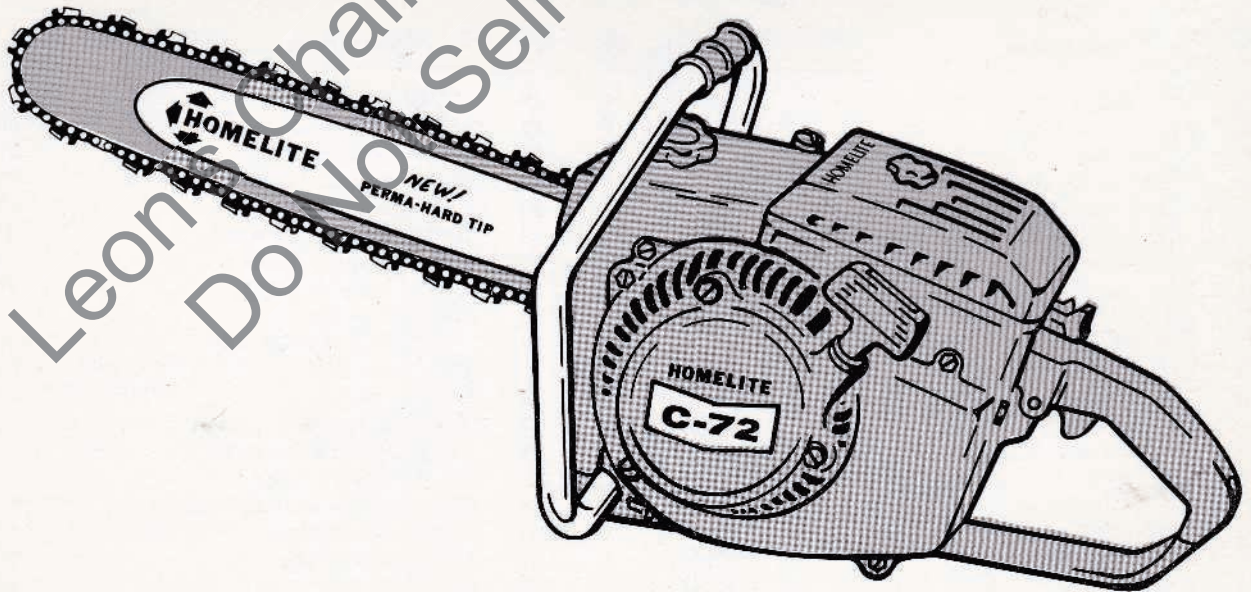


HOMELITE[®]

CHAIN SAW

C-72



A **textron** DIVISION, PORT CHESTER, N.Y. 10573

PRICE .35

PART NO. 2 4 6 0 2

C-72 CHAIN SAW

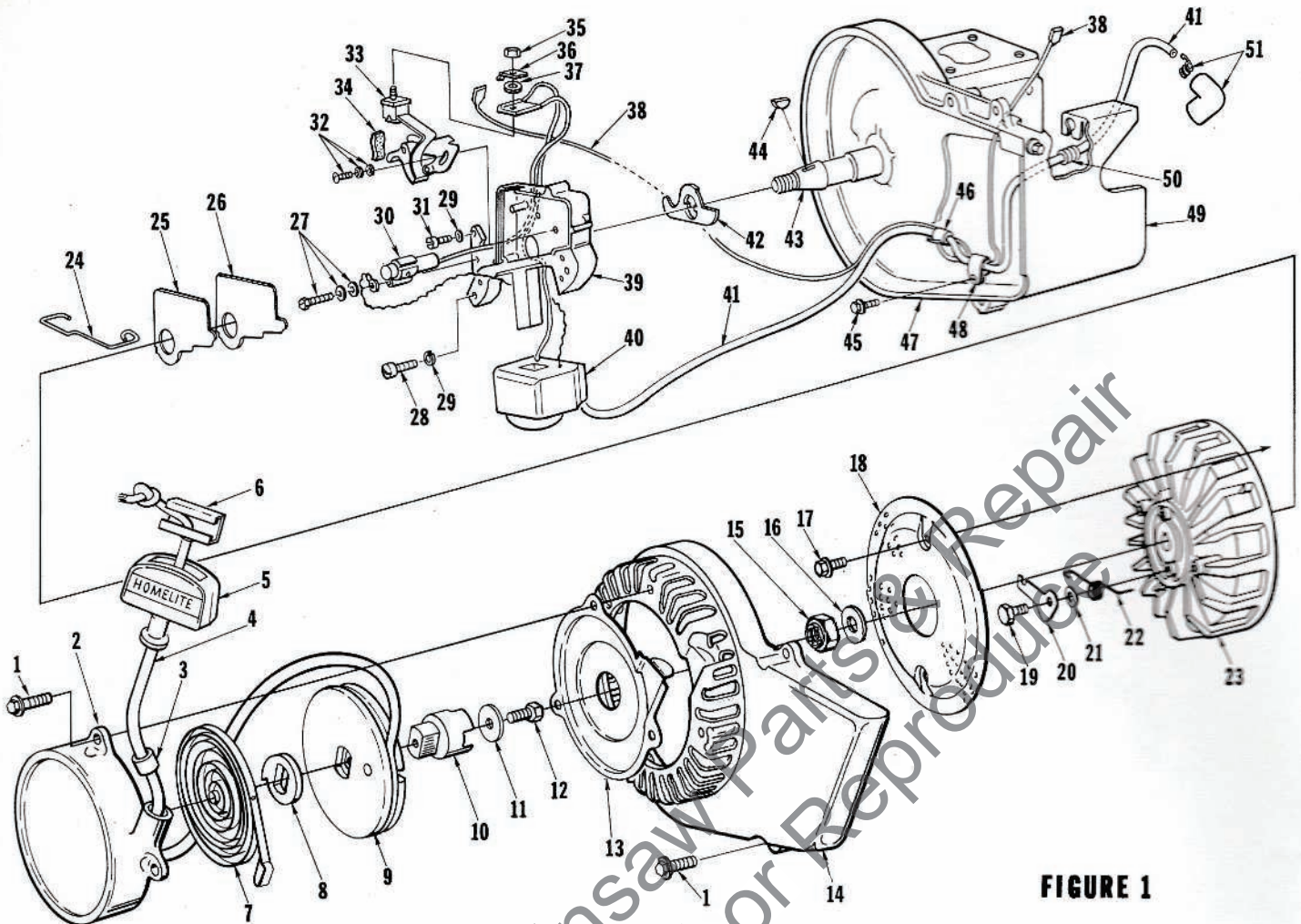


FIGURE 1

No.	Description	Part No.	Qty.	No.	Description	Part No.	Qty.
1	SCREW-hex hd., 12-24 x 3/4	80867	7	25	COVER-breaker box	55979	1
*2	STARTER-rewind	A-64178-3A	1	26	GASKET-breaker box cover	55978-2	1
	Includes:			27	SCREW-condenser	57750	1
3	BUSHING-starter cover	67177	1	28	SCREW-fil hd., 10-24 x 7/8	80660	2
*	BUSHING-starter post (not shown)	64443-1	1	29	WASHER-lock, #10	83046	3
	BUSHING-starter cup (not shown)	65830	1	30	CONDENSER-w/terminal	55987	1
4	ROPE-starter	58806	1	31	SCREW-fil hd., 10-24 x 1/2	80595	1
5	GRIP-rope	55937	1	32	SCREW-breaker points	57749	1
6	INSERT-rope retaining	58517	1	33	POINTS-breaker	A-58165	1
7	SPRING-rewind	64180-A	1	34	Includes: WIPER-cam	55984	1
8	LOCK-rewind spring	64049-A	1	35	NUT-terminal	55982	1
9	PULLEY-starter	64050-1	1	36	TAB-ground	57733	1
10	CUP-starter	67139	1	37	WASHER-terminal	55983	1
11	WASHER-retaining	58763	1	38	LEAD-ground w/terminal	A-58321	1
12	SCREW-hex hd. spinlock, 10-32 x 1/2	80648	1	39	BOX-breaker w/core	57744	1
13	SHIELD-sawdust	64052	1	40	COIL-ignition w/ground terminal	55986-A	1
14	HOUSING-fan	59094-1	1	41	LEAD-high tension	58382	1
15	NUT-lock, 7/16-20	81104	1	42	SEAL-breaker box	56292-A	1
16	WASHER-flat, 7/16	84047	1	43	CRANKSHAFT	59270-2	1
17	SCREW-hex hd. spinlock, 10-24 x 3/8	80869-1	2	44	KEY-woodruff	75078	1
18	SCREEN-rotary	64055	1	45	SCREW-hex hd., 10-24 x 3/8	80869-1	1
19	STUD-starter pawl	64054	2	46	SLEEVE	55290	1
20	PAWL-starter	58756	2	47	CRANKCASE (See Figure 2)	A-58317-B1	1
21	WASHER	58851	2	48	CLAMP-lead	56014	1
22	SPRING-starter pawl	58758-1	2	49	SHIELD-cylinder	A-59919-1	1
23	ROTOR	64053-A	1	50	GROMMET	68046	1
24	CLIP-cover	55980	1	51	TERMINAL-spark plug	A-55373-A	1

*Denotes new parts

C-72 CHAIN SAW

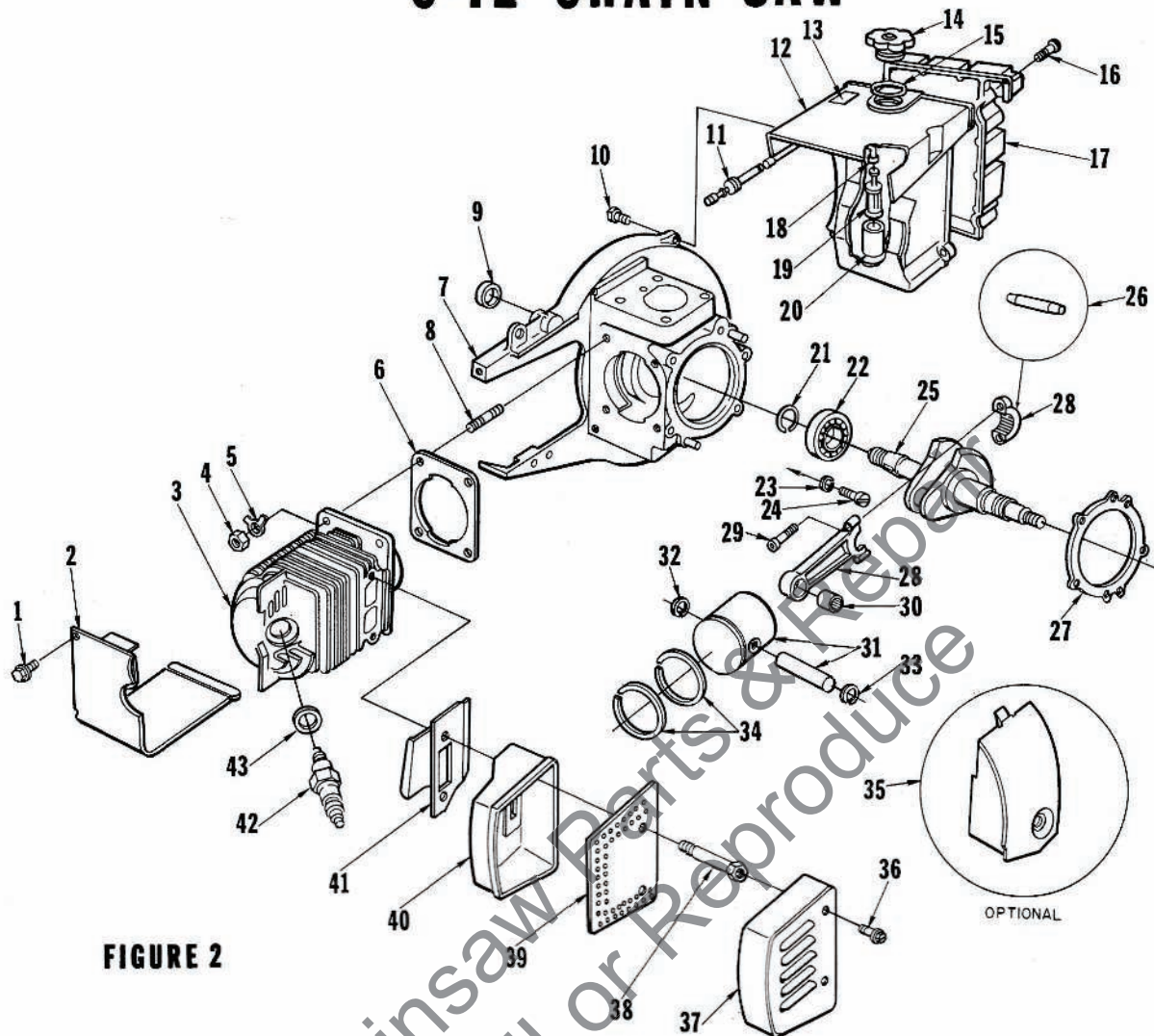


FIGURE 2

No.	Description	Part No.	Qty.	No.	Description	Part No.	Qty.
1	SCREW-hex hd., 10-24 x 3/8	80869-1	2	22	BEARING-ball	58190-S	1
2	SHIELD-cylinder	A-59919-1	1	23	WASHER-lock	83061	2
3	CYLINDER-2" bore	58174-2	1	24	SCREW-bearing retainer	19238-3	2
4	NUT-hex, 1/4-28	81065-2	4	25	CRANKSHAFT	59270-2	1
5	WASHER-lock, 1/4	83009	4	26	ROLLERS-set of 27	A-65615	1
6	GASKET-cylinder	58292	1	27	GASKET-crankcase	63356	1
7	CRANKCASE	A-58317-B1	1	28	ROD-connecting	A-59483-1	1
	Includes:				Includes:		
8	STUD	55871	4	29	SCREW	80805	2
9	SEAL	58308-A	1	30	BEARING-needle	59351	1
10	SCREW-hex hd., 12-24 x 3/4	80867	4	31	PISTON & PIN	A-58653-B	1
11	FITTING-fuel outlet	58364	1		Includes:		
12	TANK-fuel	58172-4	1	32	RING-retaining	64742	1
13	DECAL-caution	64144	1	33	RING-retaining	55095	1
14	CAP-fuel tank	A-64140-1	1	34	PISTON RING	55038	2
	Includes:			35	EXCHANGER-heat (Note 1)	†59279	1
15	VALVE-vent (not shown)	63718	1		MUFFLER	A-59652	1
16	GASKET	65358	1		Includes:		
17	SCREW-rd. hd., #6 x 1/2	80513	15	36	SCREW-hex hd., 12-24 x 3/8	80837	2
	COVER-fuel tank	58173-1	1	37	CAP-muffler	58425-A	1
	GASKET-fuel tank cover (not shown)	†58367	1	38	STUD-muffler	59337	2
18	LINE-fuel (flexible)	55805	1	39	BAFFLE-muffler	58423-A	1
19	FILTER-fuel	A-59251	1	40	BODY-muffler	A-58419	1
	Includes:			41	DEFLECTOR-air (Note 1)	58639	1
20	FILTER-felt	59253-1	1	42	SPARK PLUG	40190-S	1
21	RING-retaining	58319-A	1	43	Includes: GASKET	25038	1

† Optional

Note 1 - When 59279 Heat Exchanger is installed remove 58639 Air Deflector.

C-72 CHAIN SAW

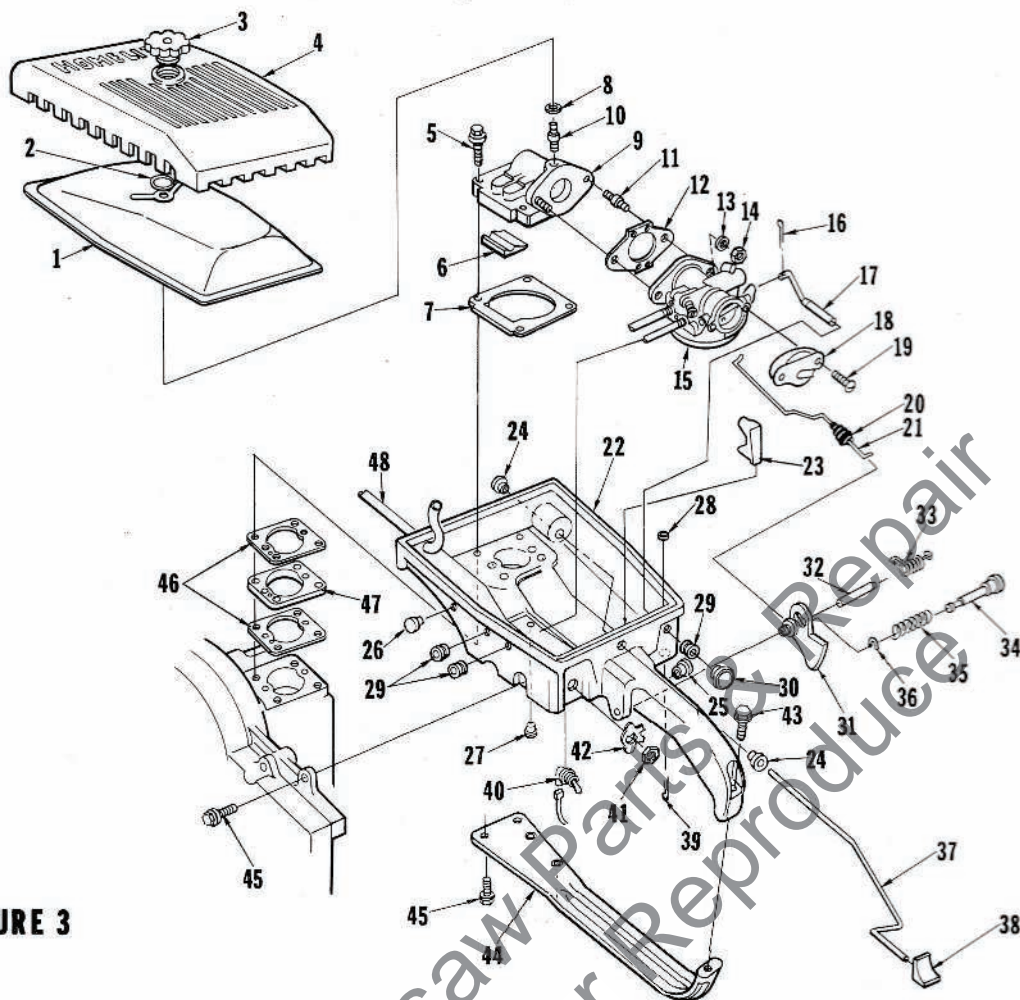


FIGURE 3

No.	Description	Part No.	Qty.	No.	Description	Part No.	Qty.
1	FILTER ELEMENT-air	63728	1	28	WASHER-felt	63290	1
2	RING-retaining	58319-A	1	29	GROMMET	58362	3
3	NUT-cover	A-59229	1	30	BUTTON-choke rod	57289-1	1
4	COVER-air filter	59230-1	1	31	TRIGGER-throttle	58181-A	1
5	SCREW-hex hd., 12-24 x 1-1/2	80868	4	32	SHAFT-trigger	58353	1
6	FILLERBLOCK.	58933	1	33	SPRING-throttle	58352-A	1
7	GASKET-elbow	58344	1	34	PIN-throttle latch	58404	1
8	GASKET-stud	58392	1	35	SPRING-throttle latch	58405	1
9	ELBOW-reed	A-59490	1	36	RING-retaining	58409	1
	Includes:			37	ROD-oil pump	58356-B	1
10	STUD-cover	58361	1	38	BUTTON-oil rod	58357	1
11	STUD-carburetor	27464	2	39	COTTER PIN-1/16 x 1/2	86301	1
12	GASKET-carburetor	55553-3	1	40	SWITCH-toggle	A-57650-3	1
13	WASHER-lock, 1/4	83009	2	41	Includes: NUT	72084-A1	1
14	NUT-hex, 1/4-20	81013-1	2	42	PLATE-"On - Off"	72085-A	1
15	CARBURETOR	A-59427-A	1	43	SCREW-hex hd., 12-24 x 1	80864	1
16	COTTER PIN-1/32	86324	1	44	BRACE-throttle handle	58185-A1	1
17	ROD-choke	A-58354	1	45	SCREW-hex hd., 12-24 x 3/4	80867	3
18	DEFLECTOR-carburetor air	58837-2	1	46	GASKET-spacer	58343	2
19	SCREW-pan hd., 10-32 x 1/2	80625	2	47	SPACER-carburetor	58391	1
20	BOOT-throttle rod	58348	1	48	LINE-fuel	55680	1
21	ROD-throttle	59338-A	1				
22	HANDLE-throttle	A-63665	1				
	Includes:						
23	STOP-rod	58930	1				
24	BUSHING-rod	58929	2				
25	BUSHING-latch pin	59064	1				
26	PLUG-button	64607	1				
27	PLUG-button	A-64744	1				
	Includes:						
	"O" RING (not shown)	59765	1				

C-72 CHAIN SAW

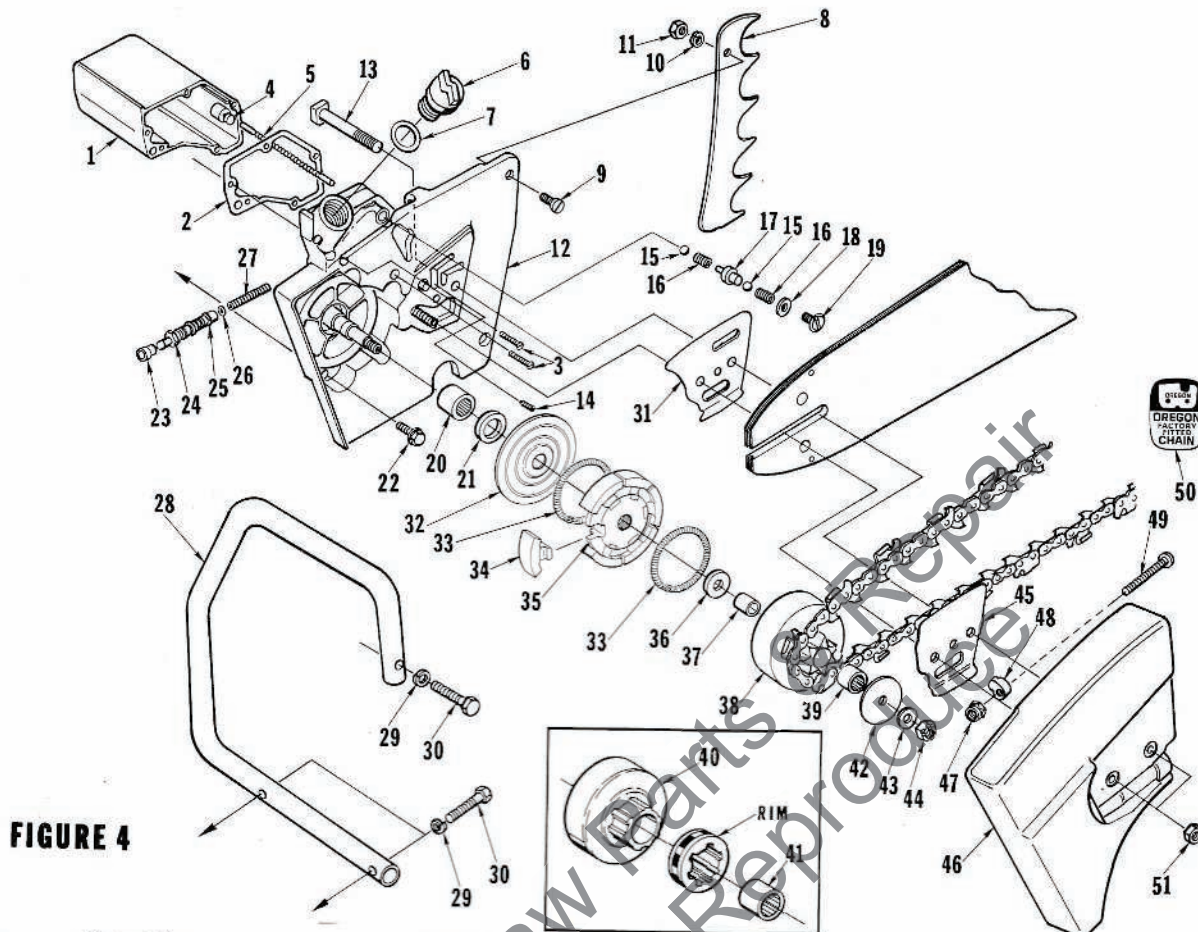


FIGURE 4

No.	Description	Part No.	Qty.	No.	Description	Part No.	Qty.
1	RESERVOIR-oil Includes: 2 GASKET-reservoir 3 SCREW-flt, 8-32 x 3/4 COTTER PIN- (not shown)	A-58341-A	1	30	SCREW-hex, 5/16-18 x 1-1/2	80087	3
4	FILTER-oil	57122	1	31	PLATE-guide bar (inner)	56871-A	1
5	LINE-oil pickup	82156	5	32	COVER-clutch	56101-A	1
6	CAP-oil filler (Note 1)	35301	1	33	SPRING-clutch	55123-C	2
7	GASKET	58828	1	34	SHOE-clutch	55076-3	6
8	KIT-spiked bumper Includes: 9 SCREW-flat hd., 1/4-20 x 3/4 10 WASHER-lock, 1/4 11 NUT-hex hd., 1/4-20	58340-B	1	35	SPIDER CLUTCH	58546-1	1
12	DRIVECASE Includes: 13 BOLT-guide bar 14 TUBE-oil line (not shown) 15 SCREW-plug 16 BALL-check 17 SPRING-check valve 18 SEAT-valve (Note 2) Includes: "O" RING (not shown) 19 GASKET 20 CAP-check valve (Note 2) 21 BEARING-needle 22 SEAL 23 SCREW-hex hd., 12-24 x 3/4 24 CONNECTOR-oil pump 25 PLUNGER-oil pump Includes: "O" RING-shaft 26 "O" RING-plunger 27 SPRING-plunger 28 HANDLE BAR-flush cut HANDLE BAR-wrap around 29 WASHER-lock, 5/16	A-63717-A	1	36	WASHER-thrust (inner)	58833-1	1
		56607	1	37	RACE-inner	55661	1
		63718	1	38	SPROCKET & DRUM (Note 3) Open type 3/8" pitch, 7 tooth (std) (Note 4) 3/8" pitch, 8 tooth .404 pitch, 7 tooth 1/2" pitch, 6 tooth 7/16" pitch, 7 tooth	A-67545 †A-58923 †A-57344 †A-56019 †A-56377	1 1 1 1 1
		80053	2	39	BEARING-needle	55664	1
		83009	2	40	DRUM & HUB-splined type Includes: 41 BEARING-needle	†OM-10616	1
		81053	2		Rim type 3/8" pitch, 7 tooth .404 pitch, 7 tooth 7/16" pitch, 7 tooth 1/2" pitch, 7 tooth	55664 †OM-68210 †OM-10513 †OM-10514 †OM-10512	1 1 1 1 1
		A-59493-C	1	42	WASHER-thrust (outer) (Note 4)	58926	1
		58334	2	43	WASHER-flat, 3/8	84010-1	1
		59023	1	44	NUT-hex, 3/8-24	81192	1
		59621	1	45	PLATE-guide bar (outer)	56872-B	1
		25527	2	46	COVER-drivecase Includes: 47 NUT -5/16-18 48 PIN-adjusting 49 SCREW-pin, 5/16-18 x 2-1/8 50 LABEL-chain (Oregon) 51 NUT-hex-3/8-16	A-58378-1	1
		59022	2			81123 55613-1 82219 68119 81089-2	1 1 1 1 2
		A-67959	1				

Note 1 - Bow Guide requires A-56580-1 Cap

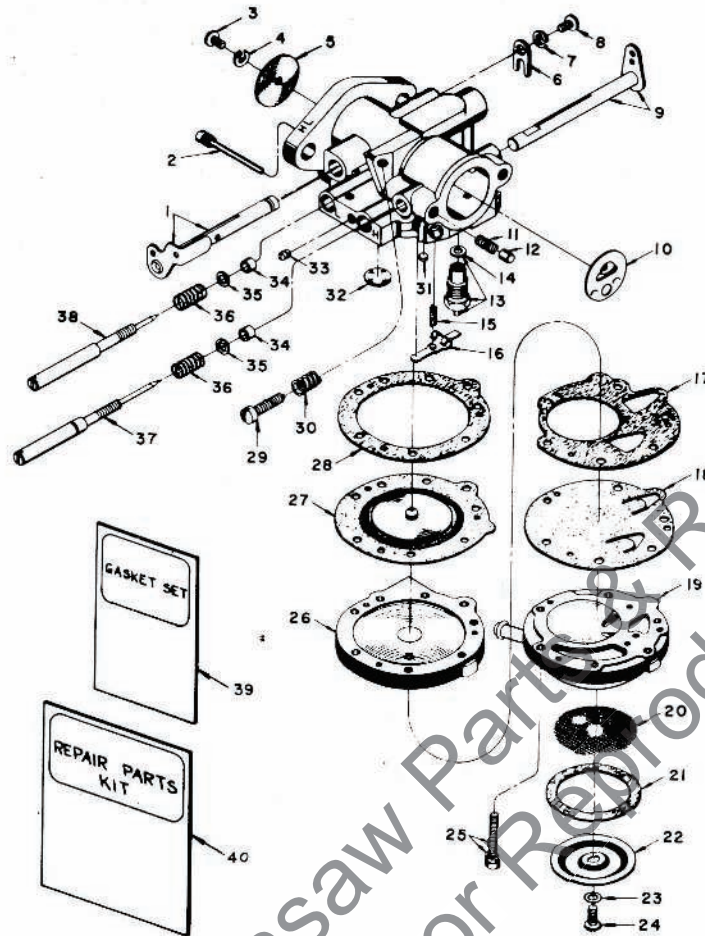
Note 2 - Units below S/N 3283150 - use A-67237 Valve Seat and 67150 Cap.

Note 3 - Check type and number of teeth on sprocket before ordering.

Note 4 - 8 tooth Sprockets must be used with 55163-1 Washer (outer).

† Optional

C-72 CHAIN SAW



A-59427-A (HL-141D)

No.	Description	Part No.	Qty.	No.	Description	Part No.	Qty.
1	THROTTLE SHAFT & LEVER	A-58531	1	22	COVER-strainer	58526	1
2	PIN-fulcrum	‡ A-55762	1	23	GASKET-cover screw	28098	1
3	SCREW-rd. hd., 4-40 x 1/4	‡ 80591	1	24	SCREW-cover retaining	‡ 58525	1
4	WASHER-lock, #4	‡ 83008	1	25	SCREW-fil hd. w/lockwasher, 6-32 x 13/16	55316	6
5	SHUTTER-throttle	75532	1	26	COVER-diaphragm	A-58533	1
6	CLIP-throttle shaft	73086	1	27	DIAPHRAGM-main	‡ 57829	1
7	WASHER-lock, #8	83000	1	28	GASKET-diaphragm cover	57824	1
8	SCREW-flat hd., 8-32 x 5/16	73088	1	29	SCREW-idle stop (Note 1)	‡ 71509	1
9	CHOKE SHAFT & LEVER	A-58532	1	30	SPRING-idle stop (Note 1)	‡ 28064	1
10	SHUTTER-choke	77427	1	31	PLUG-cup	‡ 55763	1
11	SPRING-choke friction	73264	1	32	PLUG-Welch	‡ 30818	1
12	PIN-choke friction	71494	1	33	SCREW PLUG-drain	73067	1
13	INLET NEEDLE & SEAT	A-58524	1	34	PACKING-adjusting needle	75733	2
14	Includes: GASKET	55344	1	35	WASHER-adjusting needle	75735	2
15	SPRING-tension	‡ 55759	1	36	SPRING-adjusting needle	‡ 73075	2
16	LEVER-inlet control	‡ 55747	1	37	NEEDLE-main adjusting	58536	1
17	GASKET-fuel pump	58529	1	38	NEEDLE-idle adjusting	58680	1
18	DIAPHRAGM-fuel pump	‡ 57729	1	39	GASKET SET	‡ 68657	1
19	BODY-fuel pump	59265	1	40	REPAIR PARTS KIT	68662	1
20	SCREEN-strainer	‡ 58527	1				
21	GASKET-strainer	55751	1				

‡ Included in Repair Parts Kit #40

Note 1 - Idle Stop Screw #29 and Spring #30 must be removed when an external idle adjustment is used.

C-72 CHAIN SAW

Tools

23136-2	BODY-assembling fixture
22820-2	COLLAR-bearing installation
A-23672	JACKSCREW-assembly
23670	PLATE-crankshaft aligning
22828	PLIERS-retaining ring (piston)
23876	PLUG-bearing installation (drivecase)
23139	PLUG-bearing installation (clutch drum)
23678	PLUG-bearing installation (starter)
A-23679	PLUG-bearing removal (starter)
A-23809	PLUG-needle bearing installation
A-23951	PLUG-piston pin removal
23233-1	PLUG-seal installation (crankcase)
23671	PLUG-seal installation (drivecase)
A-22560	PULLER-magneto rotor
23693	SLEEVE-seal protecting
A-22808	WRENCH-combination
23528	WRENCH-hex or socket screw (connecting rod)
A-23696-A	WRENCH-spanner

Accessories

A-67511	KIT-drivecase cover (extended)
57084-1	ROPE-starter (250 ft. reel)
65711	SHIELD-rewind spring (inner)
65712	SHIELD-rewind spring (outer)

Paint

23475	SPRAY CAN-red
-------	---------------

Decal

No. 23742 composed of "DIRECT DRIVE", "STARTING INSTRUCTIONS" and two "HOMELITE" (letters 1/2" and 1/4" high).

