

HOMELITE

Chain Saw



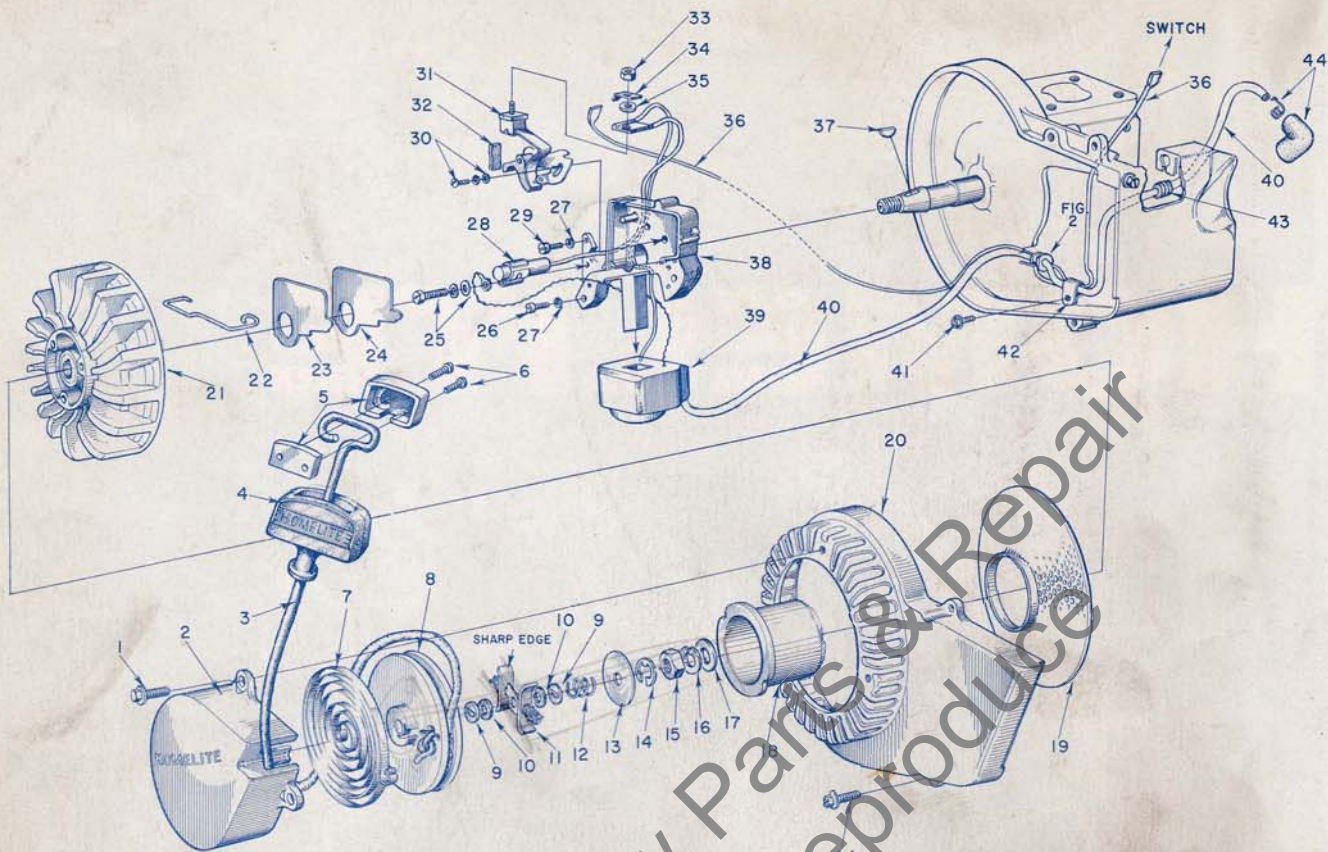


FIGURE 1

Index No.	Part No.	Description	No. Required	Index No.	Part No.	Description	No. Required
	58472	DECAL — Homelite, C-5	1	23	55979	COVER — dust	1
1	80867	SCREW — hex hd., #12-24	7	24	55978-2	GASKET — dust cover	1
2	A-58502	COVER — pulley w/2 roll pins	1	25	57750	SCREW GROUP — condenser fastening	1
3	55898	ROPE — starting	1	26	80660	SCREW — fil. hd., 10-24 x 7/8	2
4	55937	GRIP — starting	1	27	83046	WASHER — lock, #10	3
5	A-56081	INSERT — grip w/screws	1	28	55987	CONDENSER — with terminal	1
		Includes		29	80595	SCREW — fil. hd., 10-24 x 1/2	1
6	80619	SCREW	2	30	57749	SCREW GROUP — point fastening	1
7	56451-1	SPRING — rewind	1	31	A-58165	BREAKER POINTS (set)	1
8	56452	PULLEY — starter	1			Includes	
9	56456	WASHER — brake	2	32	55984	WICK — felt	1
10	56457	WASHER — fibre	2	33	55982	NUT — terminal	1
11	A-57647	FRICTION SHOE ASSEMBLY	1	34	57733	TAB — ground	1
12	56455	SPRING — brake	1	35	55983	WASHER — terminal	1
13	76436	WASHER — brake retainer	1	36	A-58321	LEAD — ground w/terminals	1
14	90618	RING — retaining	1	37	75078	KEY — rotor	1
15	81110	NUT — hex jam, 7/16-20	1	38	57744	BOX — breaker, w/core	1
16	83019	WASHER — lock, 7/16	1	39	55986-A	COIL — with ground terminal	1
17	84055	WASHER — flat aluminum, 7/16	1	40	58382	LEAD — high tension	1
18	56441	CUP — starter	1	41	80869	SCREW — hex hd., 10-24 x 3/8	1
19	58294	SCREEN — rotary	1	42	56014	CLAMP — lead	1
20	58171	HOUSING — fan	1	43	60929	GROMMET	1
21	57568-A	ROTOR	1	44	A-55373	TERMINAL — (sparky)	1
22	55980	CLAMP — dust cover	1				

Available: — Replacement starter assembly #A-58384, composed of index #2 through #19, except #15, #16, and #17.

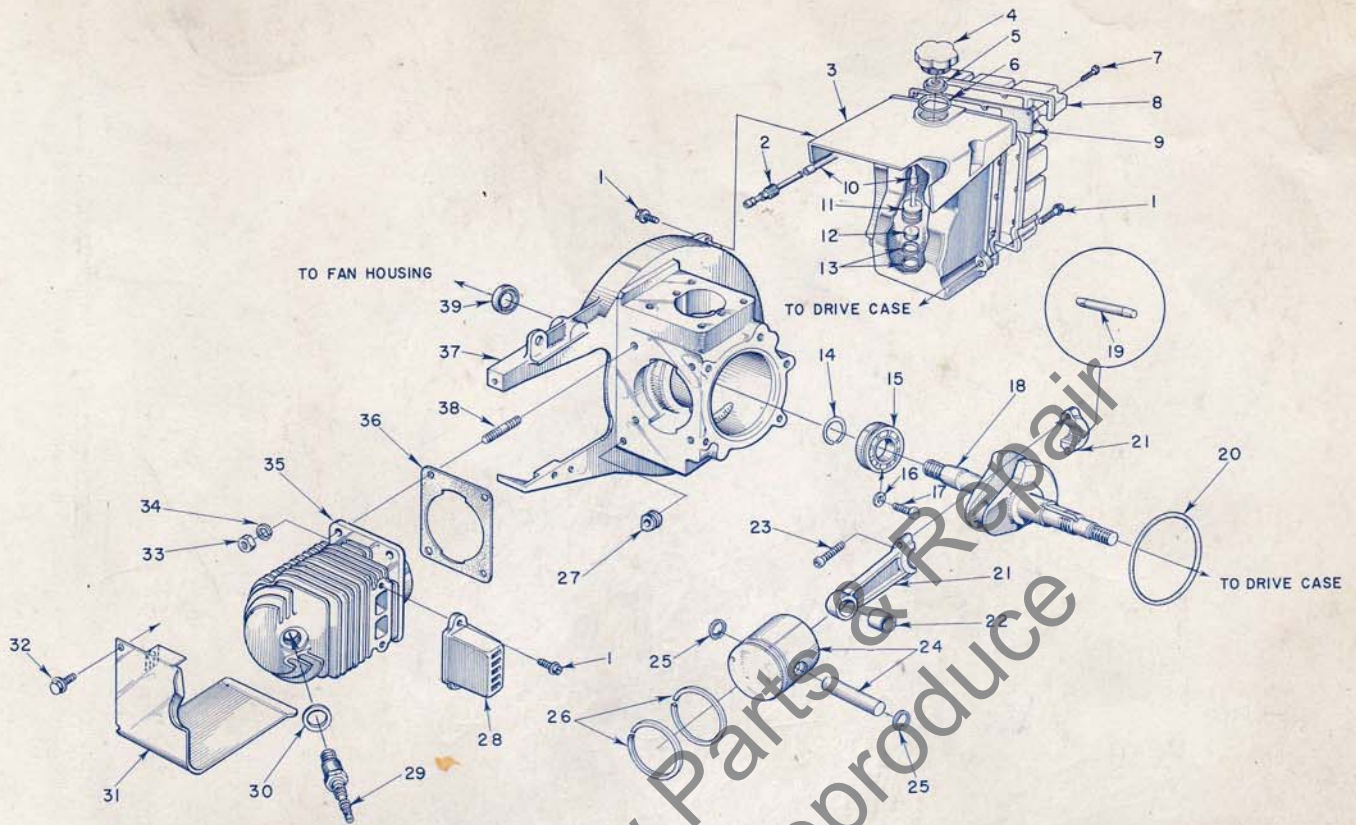


FIGURE 2

Index No.	Part No.	Description	No. Required	Index No.	Part No.	Description	No. Required
1	80867	SCREW — hex hd., 12-24 x 3/8	1	22	55196	Includes BEARING — needle	1
2	58364	FITTING — outlet (fuel line)	1	23	80805	SCREW — socket hd., 8-32 x 1/8	2
3	58172	TANK — fuel	1	24	A-58328	PISTON AND PIN	1
4	A-58368	CAP — fuel tank	1			Includes	
		Includes		25	55095	RING — pin retaining	2
5	56865	VALVE — relief	1	26	55038	RING — piston	2
6	58395	"O" RING	1	27	58318	GROMMET — lead	1
7	80789	SCREW — rd. hd., #6 x 1/16	15	28	58184	MUFFLER	1
8	58173	COVER — fuel tank	1	29	40190-S	SPARK PLUG	1
		Includes				Includes	
9	58367	GASKET — tank cover	1	30	25038	GASKET	1
10	55805	SLEEVE — flexible	1	31	58187	CYLINDER SHIELD	1
11	A-56200	STRAINER — outlet w/ brass nail	1			Includes	
		Includes		32	80869	SCREW — hex hd., 10-24 x 3/8	2
12	74374	FILTER	1	33	81065-2	NUT — hex, 1/4-28	4
13	56196	BUMPER	2	34	83009	WASHER — lock, 1/4	4
14	58319	RING — retaining	1	35	58174	CYLINDER	1
15	58190-S	BEARING — ball	1	36	58292	GASKET — cylinder	1
16	83061	WASHER — lock	2	37	A-58317	CRANKCASE	1
17	19238-3	SCREW — bearing retaining	2			Includes	
18	58189	CRANK SHAFT	1	38	55871	STUD	4
19	AA-55280	ROLLERS — set of 27	1	39	58308	SEAL — garlock	1
20	58329	"O" RING	1				
21	AA-55195-A	CONNECTING ROD	1				

***SPECIAL TOOLS**

Part No.	Description	Part No.	Description
AA-22560	MAGNETO ROTOR REMOVER ASSEMBLY	23139	ASSEMBLY TOOL — clutch drum bearing
A-23131	CLUTCH SPIDER PULLER ASSEMBLY	23391-2	ASSEMBLY TOOL — needle bearing
23136	BODY — assembling fixture	23671	ASSEMBLY TOOL — drive case seal
23693	SLEEVE (for garlock seal)	22828	PLIERS — for Tru-arc ring (piston)
22820-2	ADAPTER — bearing assembling	23234	NEEDLE BEARING TOOL (conn. rod)
A-23672	JACKSCREW ASSEMBLY	23528	WRENCH — socket screw (conn. rod)
23670	PLATE — shaft aligning	23318	SPRAY CAN — blue paint
23233-1	GARLOCK SEAL ASSEMBLY		

*When ordered only.

22808 COMBINATION WRENCH

Always furnish saw model and serial number when ordering parts.

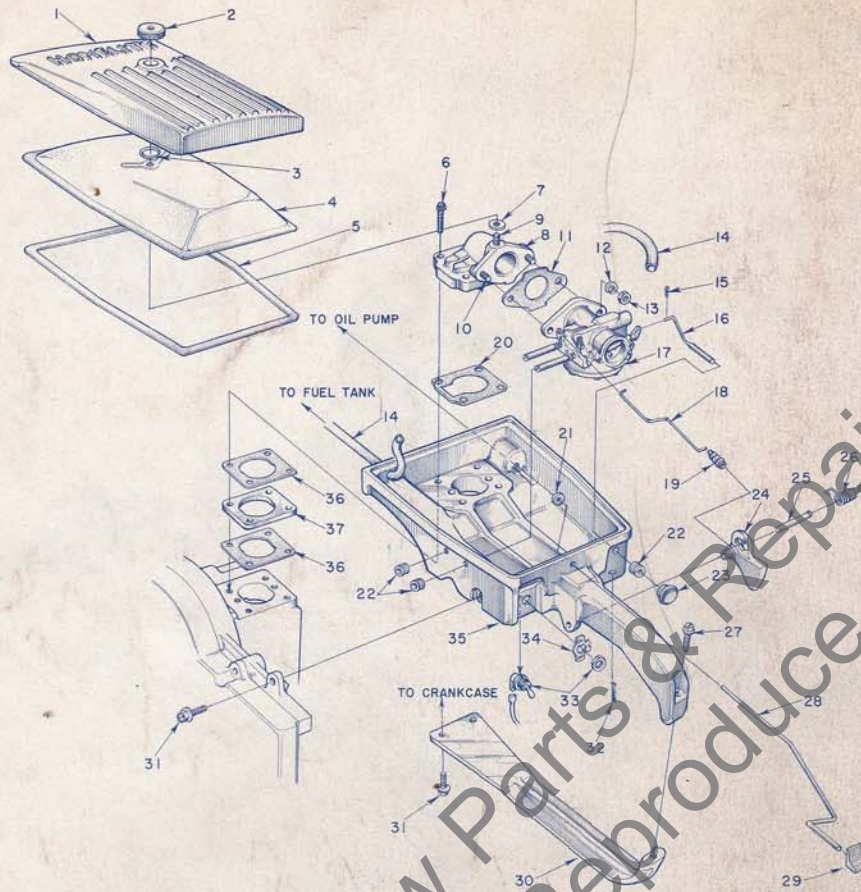


FIGURE 3

Index No.	Part No.	Description	No. Required	Index No.	Part No.	Description	No. Required
1	A-58372	COVER — air filter	1	18	58351	ROD — throttle	1
		Includes		19	58348	BOOT — throttle rod	1
2	58373	NUT — cover	1	20	58344	GASKET — reed valve	1
3	58319	RING — retaining	1	21	58394	WASHER — felt (pump rod)	1
4	58188	ELEMENT — air filter	1	22	58362	GROMMET	3
5	58350	GASKET — filter element	1	23	57289-1	BUTTON — choke rod	1
6	80868	SCREW — hex hd., 12-24 x 1 1/2	4	24	58181	TRIGGER — throttle	1
7	58392	GASKET — mounting stud	1	25	58353	SHAFT — throttle trigger	1
8	A-58359	VALVE — reed (elbow)	1	26	58352	SPRING — throttle trigger	1
		Includes		27	80864	SCREW — hex hd., 12-24 x 1	1
9	58361	STUD — cover mounting	1	28	58356	ROD — oil pump	1
10	27464	STUD — carburetor mounting	2	29	58357	BUTTON — rod (oil pump)	1
11	55553-2	GASKET — carburetor	1	30	58185	BRACE — throttle handle	1
12	83009	WASHER — lock, 1/2	2	31	80867	SCREW — hex hd., 12-24 x 3/4	3
13	81013	NUT — hex, 1/4-20	2	32	86301	COTTER PIN — 1/16 x 1/2	1
14	58363	LINE — fuel	1	33	A-57650-3	SWITCH — toggle w/nut	1
15	86324	COTTER PIN — 1/32 x 1/2	1	34	72085-A	PLATE — indicating (ON-OFF)	1
16	58354	ROD — choke	1	35	58179	THROTTLE HANDLE — carburetor and filter housing	1
17	*A-58360	CARBURETOR ASSEMBLY	1		58476	DECAL — "LO-HI"	1
	58535	REPAIR KIT — carburetor (includes Gasket Set)	1	36	58343	GASKET — spacer	2
	58534	GASKET SET — carburetor	1	37	58391	SPACER	1

*Refer to Carburetor Parts List #23692

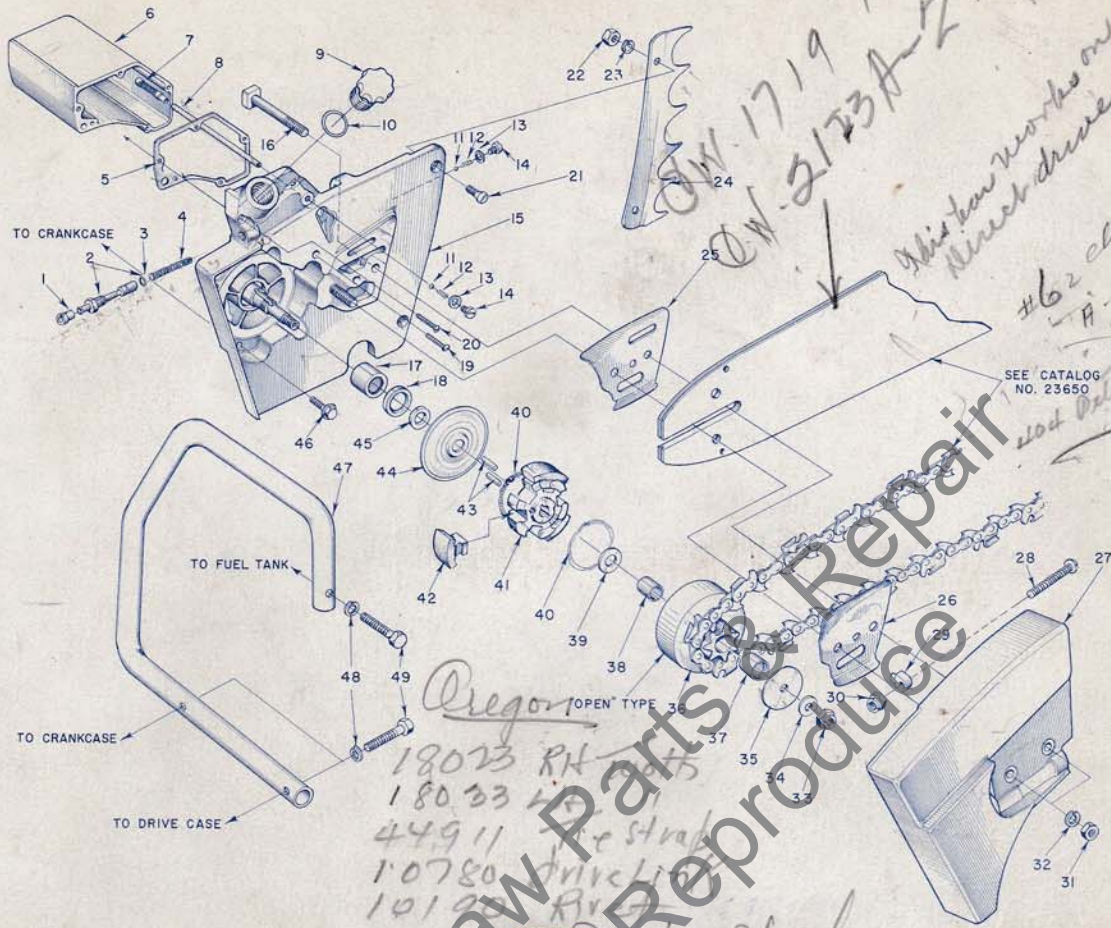


FIGURE 4

Index No.	Part No.	Description	No. Required	Index No.	Part No.	Description	No. Required
1	58337	CONNECTOR — oil pump	1	26	56872-B	PLATE — guide bar (outer)	1
2	A-57834-3	PLUNGER — oil pump	1	27	A-58378	COVER — drive case	1
3	74388	"O" RING	2	Includes			
4	71762	SPRING — plunger	1	28	80617	SCREW — rd. hd., 3/16-18 x 2	1
5	58342	GASKET — oil reservoir	1	29	55613	PIN — adjusting	1
6	A-58341	RESERVOIR — oil	1	30	81123	NUT — hex lock, 3/16-18	1
7	AA-55259-A	FILTER — oil	1	31	81089-2	NUT — hex, 3/8-16	2
8	58340	LINE — oil filter	1	32	83018	WASHER — lock, 3/8	2
9	A-58390	CAP — oil filter	1	33	81116	NUT — hex, 3/8-24	1
Includes				34	84010	WASHER — flat, 3/8	1
10	58393	"O" RING	1	35	55163-1	WASHER — thrust	1
11	25527	BALL — check	2	36	A-57344	SPROCKET AND DRUM — 7 tooth .404 pitch (open type)	1
12	55288-A	SPRING — check valve	2	Includes			
13	58338	GASKET — cap	2	37	55664	BEARING — needle	1
14	58339	CAP — check valve	2	38	55661	RACE — inner	1
15	A-58333	DRIVE CASE	1	39	55660-1	WASHER — thrust	1
Includes				40	55123-C	SPRING — hex clutch	2
16	58334	BOLT — guide bar	2	41	55075-3A	SPIDER — clutch	1
17	74251	BEARING — needle	1	42	55076-1A	SHOE — clutch	3
18	56256	SEAL garlock	1	43	55225-1A	KEY — clutch	2
19	80790	SCREW — rd. hd., #6 x 3/4	4	44	56101-A	COVER — clutch	1
20	80622	SCREW — rd. hd., #6 x 7/8	1	45	58347	SPACER — clutch	1
21	80053	SCREW — flat hd., 1/4-20 x 3/4	2	46	80867	SCREW — hex hd., #12-24 x 3/4	5
22	81053	NUT — hex, 1/4-20	2	47	A-58379	HANDLE BAR — flush cut	1
23	83009	WASHER — lock, 1/4	2	48	83003	WASHER — lock, 3/16	3
24	58396	BUMPER — spiked (accessory)	1	49	80087	SCREW — hex hd., 3/16-18 x 1 1/2	3
25	56871-A	PLATE — guide bar (inner)	1				

*Check type and number of teeth on sprocket before ordering.

OPTIONAL — available on order:

A-56019	SPROCKET AND DRUM — 6 tooth, 1/2" pitch (open type)	A-57363-A	SPROCKET AND DRUM — 7 tooth, 3/16" pitch (rim type)
A-56377	SPROCKET AND DRUM — 7 tooth, 7/16" pitch (open type)		Includes BEARING — needle

77403

**You'll
SPEED WORK
and make
MORE MONEY
with...**



**HOMELITE
SELF-PRIMING PUMPS**



**HOMELITE
DEPENDABLE GENERATORS**



**HOMELITE
POWERFUL ONE-MAN CHAIN SAWS**



**HOMELITE
ONE-MAN CONCRETE VIBRATORS**



**HOMELITE — BOSCH (Germany)
ELECTRIC BUILDER'S HAMMERS**

All Powered By Famous HOMELITE Engines

Homelite's two-cycle gasoline engines are the most efficient and dependable units of their kind ever built. Their two-cycle design, developed to perfection by Homelite engineers over the past 35 years, gives maximum power for the least weight because power is produced at every piston down stroke. As an added advantage, this design requires fewer moving parts which means greater dependability and lower maintenance.



Printed in United States of America

Part No. 23687

10M-9-62

HOMELITE

A **Textron** DIVISION

PORT CHESTER, N. Y.

Illustrated in **INSPECTIVE** and
published by PURNELL COMPANY, INC.
Boston, Mass.