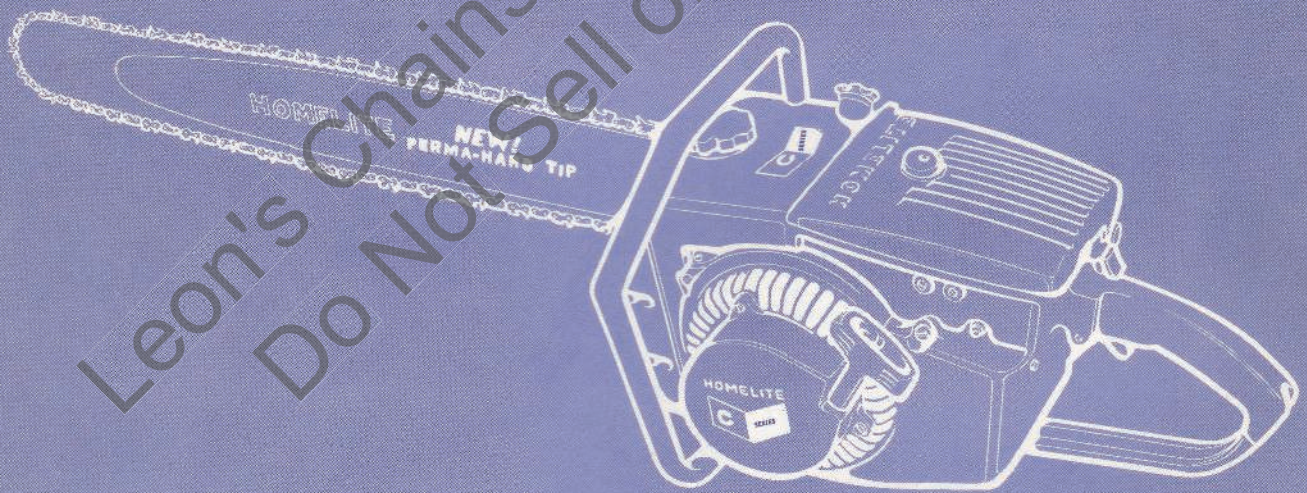


PRICE .25

# HOMELITE

*Chain & Saw*



*Leon's Chainsaw Parts & Repair*  
*Do Not Sell or Reproduce*



**PARTS LIST**



FIGURE 1

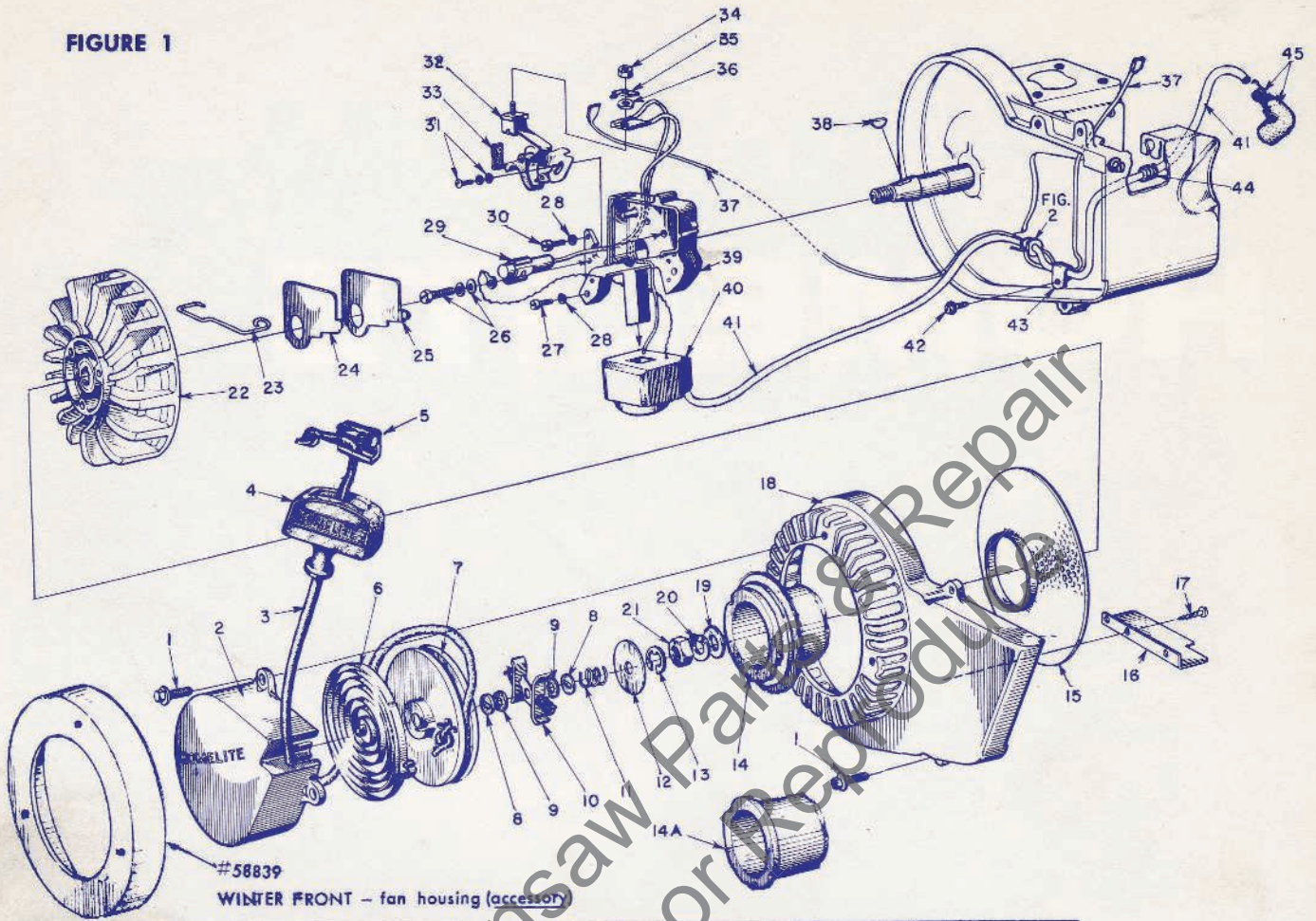
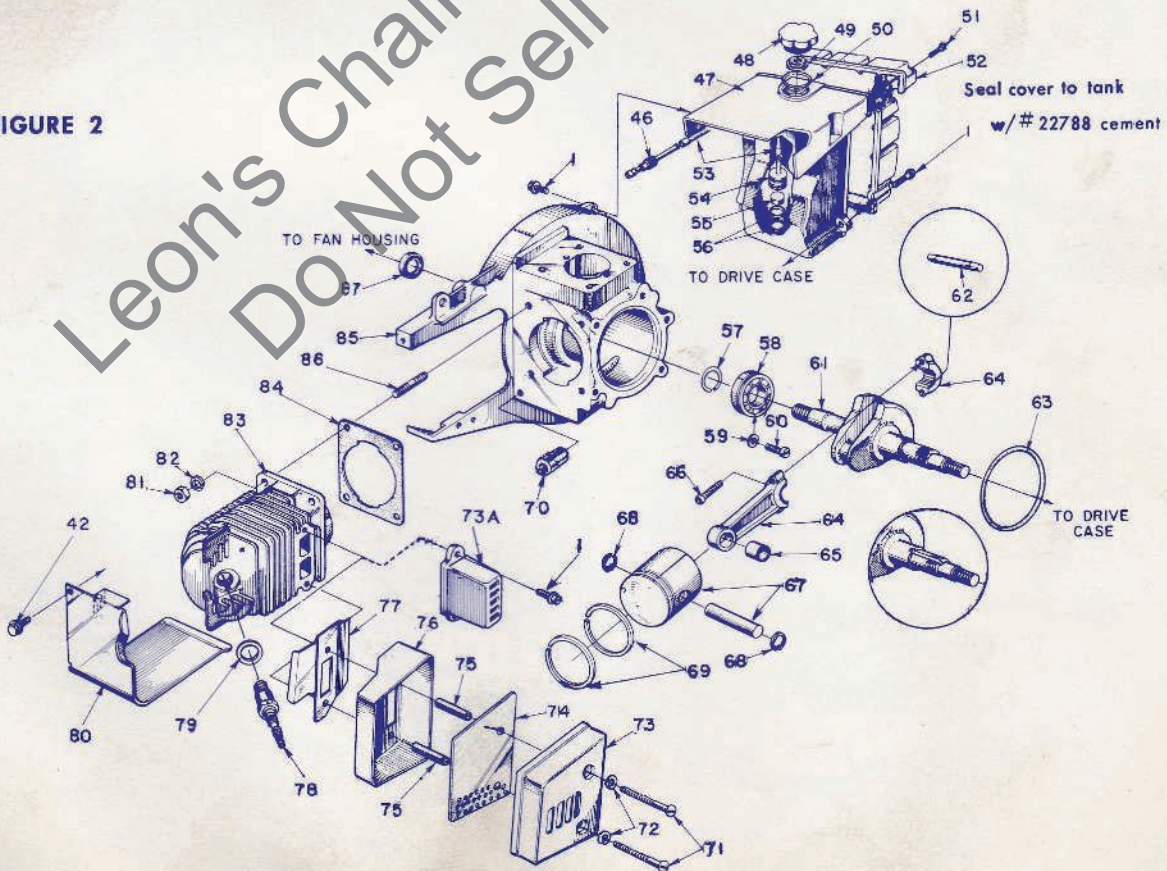


FIGURE 2





Circled asterisk \* denotes a part that may require adaptation for use in older saws; see notes.

Black circled numerals ( ) refer to note numbers on page 6.

No.	Description	Part No.	C-5	C-7	C-9	Qty.
1	SCREW-hex hd., 12 - 24 x 3/4	80867	*	*	*	13
2	COVER-pulley w/2 roll pins	A-58502-1	*	*	*	1
3	ROPE - starter	55898	*	*	*	1
4	GRIP - rope	55937	*	*	*	1
5	INSERT - rope retaining (1)	58517	*	*	*	1
6	SPRING - rewind	56451-1	*	*	*	1
7	PULLEY - starter	56452	*	*	*	1
8	WASHER - brake (1)	58970	*	*	*	2
	-used w/#9	56456	*	*	*	2
9	WASHER - fibre	56457	*	*	*	2
10	FRICITIONSHOE ASSEMBLY	A-57647	*	*	*	1
11	SPRING - brake	56455	*	*	*	1
12	WASHER - brake retainer	76436	*	*	*	1
13	RING - retaining	90618	*	*	*	1
14	CUP - starter (2)	58920	*	*	*	1
14a		56441	*	*	*	1
15	SCREEN - rotary	58294	*	*	*	1
16	BAFFLE - fan housing (2)	58408	*	*	*	1
17	SCREW - self tap	80548	*	*	*	3
18	HOUSING - fan (2)	58171-1A	*	*	*	1
19	WASHER - flat alum., 3/16	84055	*	*	*	1
20	WASHER - lock, 3/16	83019	*	*	*	1
21	NUT - hex, 3/16 - 20	81110	*	*	*	1
22	ROTOR	57568-A	*	*	*	1
23	CLAMP - dust cover	55980	*	*	*	1
24	COVER - dust	55979	*	*	*	1
25	GASKET - dust cover	55978-2	*	*	*	1
26	SCREW GROUP-condenser	57750	*	*	*	1
27	SCREW-filhd., 10-24 x 3/8	80660	*	*	*	2
28	WASHER - lock, #10	83046	*	*	*	3
29	CONDENSER-w/terminal	58987	*	*	*	1
30	SCREW-fil. hd., 10-24 x 1/2	80596	*	*	*	1
31	SCREW GROUP - point	57749	*	*	*	1
32	BREAKER POINTS (set)	A-58165	*	*	*	1
33	Includes: WICK - felt	55984	*	*	*	1
34	NUT - terminal	55982	*	*	*	1
35	TAB - ground	57733	*	*	*	1
36	WASHER - terminal	55983	*	*	*	1
37	LEAD-ground w/terminals	A-58321	*	*	*	1
38	KEY - rotor	75078	*	*	*	1
39	BOX - breaker w/core	57744	*	*	*	1
40	COIL - w/ground terminal	55986-A	*	*	*	1
41	LEAD - high tension	58382	*	*	*	1
42	SCREW-hex hd., 10 - 24 x 3/8	80869	*	*	*	3
43	CLAMP - lead	56014	*	*	*	1
44	GROMMET	60929	*	*	*	1
45	TERMINAL-spark plug (3)	A-55373-A	*	*	*	1
46	FITTING - fuel outlet	58364	*	*	*	1
47	TANK - fuel (4)	58172-A1	*	*	*	1

No.	Description	Part No.	C-5	C-7	C-9	Qty.
48	CAP - fuel tank (4)	A-58368-A	*	*	*	1
49	Includes: VALVE-relief	56865	*	*	*	1
50	GASKET (4)	58967	*	*	*	1
51	SCREW-rd. hd., #6 x 1/16	80769	*	*	*	15
52	COVER - fuel tank (4)	58173-1	*	*	*	1
53	SLEEVE - flexible	58805	*	*	*	1
54	STRAINER - outlet w/nail	A-56200	*	*	*	1
55	Includes: FILTER	74374	*	*	*	1
56	BUMPER	56196	*	*	*	2
57	RING - retaining	58819-A	*	*	*	1
58	BEARING ball	83190-S	*	*	*	1
59	WASHER	83061	*	*	*	2
60	SCREW - bearing retainer	19238-3	*	*	*	2
61	CRANKSHAFT (5)	58189-B	*	*	*	1
		58592	*	*	*	1
62	ROLLERS - set of 27	AA-55280	*	*	*	1
63	"O" RING	58329	*	*	*	1
64	CONNECTING ROD	AA-55195-A	*	*	*	1
65	Includes: BEARING-needle	55196	*	*	*	1
66	SCREW-8-32 x 3/16	80805	*	*	*	2
67	PISTON & PIN	A-58328	*	*	*	1
		A-58653	*	*	*	1
	Includes:	A-58674	*	*	*	1
68	RING-pin retaining	55095	*	*	*	2
69	RING - piston	55038	*	*	*	2
		55537	*	*	*	2
70	SLEEVE (6)	55290	*	*	*	1
71	SCREW-hexhd., 12-24 x 2 1/4	80881	*	*	*	2
72	WASHER - flat #12 (7)	84008	*	*	*	2
73	MUFFLER CAP	58425-A	*	*	*	1
73a	MUFFLER (assembly) (7)	58184	*	*	*	1
74	BAFFLE - muffler (7)	58423-A	*	*	*	1
75	TUBE - baffle (7)	58424-A	*	*	*	2
76	BODY - muffler	A-58419	*	*	*	1
77	DEFLECTOR - air	58639	*	*	*	1
78	SPARK PLUG	40190-S	*	*	*	1
79	Includes: GASKET	25038	*	*	*	1
80	CYLINDER SHIELD (8)	A-58906-1	*	*	*	1
81	NUT - hex, 1/4 - 28	81065-2	*	*	*	4
82	WASHER - lock, 1/4	83009	*	*	*	4
83	CYLINDER (9)	58174-A	*	*	*	1
		58174-A1	*	*	*	1
84	GASKET - cylinder	58292	*	*	*	1
85	CRANKCASE (10)	A-58317-A1	*	*	*	1
86	Includes: STUD	55871	*	*	*	4
87	SEAL - garlock	58308	*	*	*	1
	ACCESSORY: available on order					
	WINTER FRONT (2)	58839	*	*	*	1



Circled asterisk \* denotes a part that may require adaptation for use in older saws; see notes.

Black circled numerals ( ) refer to note numbers on page 6.

No.	Description	Part No.	C-5	C-7	C-9	Qty.
1	COVER - air filter	A-58372-1	*	*	*	1
2	Includes: NUT	58373	*	*	*	1
3	RING	58319-A	*	*	*	1
1a	Accessory - filter cover (21)	A-59179	*	*	*	1
2a	Includes: NUT	59156	*	*	*	1
3	RING	58319-A	*	*	*	1
4	ELEMENT - air filter	58188	*	*	*	1
5	GASKET - filter element	58350	*	*	*	1
6	SCREW-hex hd., 12-24 x 1 1/2	80868	*	*	*	4
6a	hex hd., 1/4 - 20 x 1 1/2	80882	*	*	*	2
7	GASKET - mounting stud	58392	*	*	*	1
8	STUD - cover (part of index #9)	58361	*	*	*	1
9	ELBOW - reed w/ #8 & #10 (11)	A-58359-B	*	*	*	1
9a	ELBOW - intake w/out studs	58183-A	*	*	*	1
10	STUD - carb. (part of index #9)	27464	*	*	*	1
11	FILLER BLOCK (11)	58933	*	*	*	1
12	GASKET	58344	*	*	*	1
12a	"	55946	*	*	*	1
13	GASKET - carburetor (11)	55553-3	*	*	*	1
14	ADAPTER - reed	55932	*	*	*	1
15	REED (12)	55941-1	*	*	*	4
16	PLATE - reed	55942	*	*	*	4
17	SCREW-pan hd., 4-40 x 3/16	80658	*	*	*	8
18	SCREW-hex hd., 12-24 x 1	80864	*	*	*	1
19	LINE - fuel (13)	A-56379	*	*	*	5
20	WASHER - lock, 1/4	83009	*	*	*	4
21	NUT - hex 1/4 - 20	81013	*	*	*	4
22	COTTER PIN - 1/32 x 1/2	86324	*	*	*	1
23	ROD - choke	A-58354	*	*	*	1
24	CARBURETOR (14)	A-58360-A	*	*	*	1
25	ROD - throttle	58351	*	*	*	1
26	BOOT - rod	58348	*	*	*	1
27	THROTTLE HANDLE - carburetor & filter housing (15)	A-58931	*	*	*	1
28	Includes: STOP - rod (nylon) (15)	58930	*	*	*	1
29	BUSHING - rod (nylon) (15)	58929	*	*	*	2
	BUSHING - trigger shaft. (not shown)	59064	*	*	*	1
30	WASHER - felt (pump rod)	58394	*	*	*	1
31	GROMMET	58362	*	*	*	3
32	BUTTON - choke rod	87290-1	*	*	*	1
33	TRIGGER - throttle	58181-A	*	*	*	1
34	SHAFT - trigger	58353	*	*	*	1
35	SPRING - throttle (16)	58352-A	*	*	*	1
36	DEFLECTOR - carburetor (15)	58837	*	*	*	1
37	SCREW-pan hd., 10 - 32 x 1/2	80625	*	*	*	2
38	PIN - throttle lock (16)	58404	*	*	*	1
39	SPRING - lock	58405	*	*	*	1
40	RING - retaining	58409	*	*	*	1
41	ROD - oil pump (15)	58356-A	*	*	*	1
42	BUTTON - oil rod	58357	*	*	*	1
43	BRACE - throttle handle	58185-1	*	*	*	1
44	SCREW-hex hd., 12-24 x 3/4	80867	*	*	*	8
45	COTTER PIN - 1/16 x 1/2	86301	*	*	*	1
46	SWITCH-toggle w/nut	A-57650-3	*	*	*	1
47	PLATE - "ON - OFF"	72085-A	*	*	*	1
48	GASKET - spacer	58343	*	*	*	2
49	SPACER	58391	*	*	*	1

No.	Description	Part No.	C-5	C-7	C-9	Qty.
50	CONNECTOR - oil pump (17)	58337-A	*	*	*	1
51	PLUNGER - oil pump (17)	A-57834-8	*	*	*	1
52	Includes: "O" RING	74388	*	*	*	1
53	SPRING - plunger (17)	59293	*	*	*	1
54	GASKET - oil reservoir	58342	*	*	*	1
55	RESERVOIR - oil	A-58341	*	*	*	1
56	FILTER - oil (17)	A-58326	*	*	*	1
57	LINE - oil filter (17)	58340-B	*	*	*	1
58	CAP - oil filler	A-58390	*	*	*	1
59	Includes: "O" RING	58393	*	*	*	1
60	BALL - check	26527	*	*	*	2
61	SPRING - check valve (17)	59022	*	*	*	2
62	GASKET	58398	*	*	*	2
63	CAP - check valve	58349	*	*	*	2
64	DRIVE CASE (17)	A-58333-B1	*	*	*	1
65	Includes: BOLT - guide bar	58334	*	*	*	2
66	BEARING-needle	74251	*	*	*	1
67	SEAL	56256	*	*	*	1
68	SCREW-rd. hd., #4 x 1/2	80790	*	*	*	4
69	SCREW-rd. hd., #6 x 1/2	80622	*	*	*	1
70	BUMPER - speed (18)	58396	*	*	*	1
71	SCREW-flt hd., 1/4 - 20 x 3/4	80053	*	*	*	2
72	NUT - hex 1/4 - 20	81053	*	*	*	2
73	PLATE - guide bar (inner)	56871-A	*	*	*	1
74	PLATE - guide bar (outer)	56872-B	*	*	*	1
75	COVER - drive case	A-58378-1	*	*	*	1
75a	" " "	A-58683	*	*	*	1
76	Includes: SCREW - pin rd. hd., 5/16 - 18 x 2	80617	*	*	*	1
77	PIN - adjusting	55613	*	*	*	1
78	NUT - 5/16 - 18	81123	*	*	*	1
79	NUT - hex 3/8 - 16	81089-2	*	*	*	2
80	WASHER - lock 3/8	83018	*	*	*	2
81	NUT - hex 3/8 - 24	81192	*	*	*	1
82	WASHER - flat 3/8	84010	*	*	*	1
83	WASHER - thrust	55163-1	*	*	*	1
84	SPROCKET & DRUM (19)					
	Open type - 7 tooth, .404 pitch	A-57344 †	*	*	*	1
	6 tooth 1/2 " pitch	A-56019 ††	*	*	*	1
	7 tooth 5/16 " pitch	A-56377 ††	*	*	*	1
85	Includes: BEARING, needle	55664	*	*	*	1
84a	SPROCKET & DRUM (19)					
	Rim type - 7 tooth 5/16 " pitch	A-57363-A††	*	*	*	1
85a	Includes: BEARING, needle	77403	*	*	*	1
86	RACE - inner	55661	*	*	*	1
87	WASHER - thrust	55660-1	*	*	*	1
88	SPRING - clutch	55123-C	*	*	*	2
89	SPIDER - clutch (threaded) (5)	58546-1	*	*	*	1
90	SHOE - clutch (5)	55076-1A	*	*	*	3
91	COVER - clutch (5)	56101-A	*	*	*	1
92	HANDLE BAR - flush cut	A-58650	*	*	*	1
	Optional: wrap-around	A-58398 §	*	*	*	1
93	WASHER - lock 5/16	83003	*	*	*	3
94	NUT - hex 5/16 - 18 x 1 1/2	80087	*	*	*	3
95	OPTIONAL: available on order					
	PLANETARY DRIVE KIT (20)					
	.404 pitch	A-58544-A	*	*	*	1
	1/2" pitch	A-58556-A	*	*	*	1

† Standard equipment. Check type and number of teeth on sprocket before ordering.

†† Optional equipment. Check type and number of teeth on sprocket before ordering.

§ Requires special wrench for bar bolt nuts. See TOOLS.



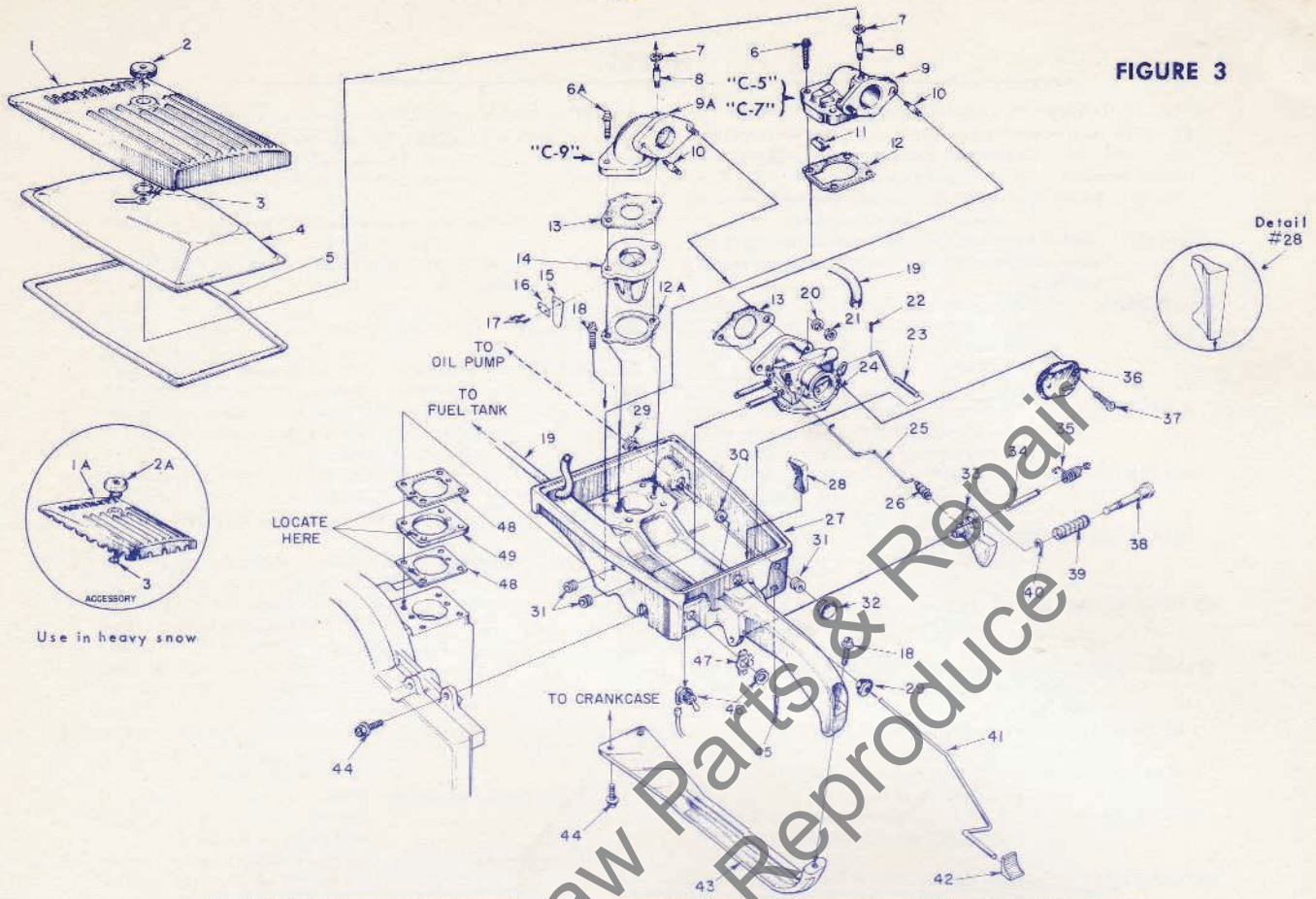


FIGURE 3

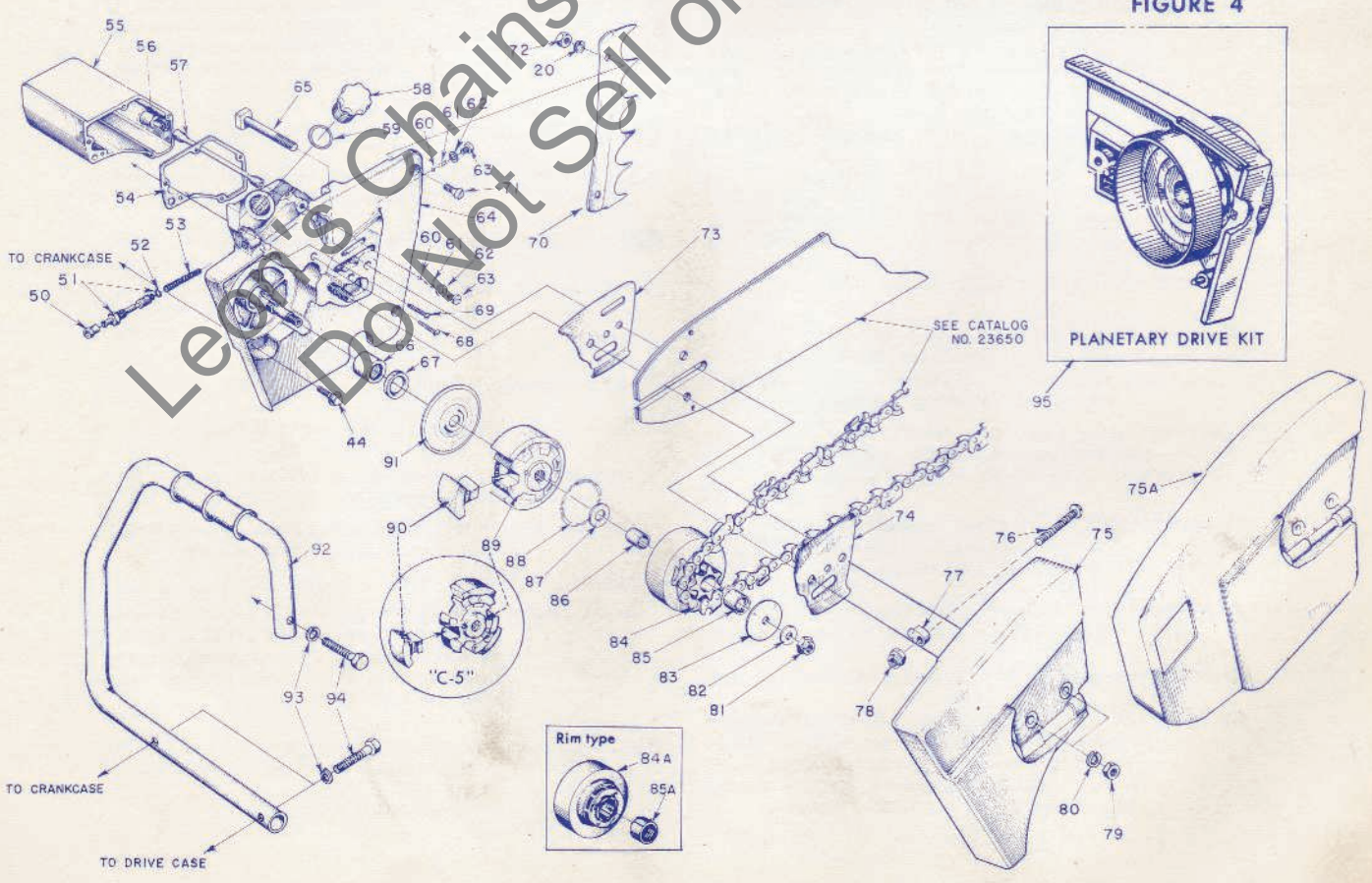


FIGURE 4



## NOTES

- 1** STARTER ASSEMBLY (complete service replacement)-  
#A-58384-1A supersedes #A-58384-1 and #A-58384; includes new starter cup with extended flange. See note **2** for adaptations required on earlier model saws.  
INSERT- rope retaining- #58517 supersedes assembly #A-56081 (with two #80619 screws).  
WASHER - #58970 supersedes #56456 brake washer and #56457 fibre washer; two new washers replace four old washers.
- 2** CUP, starter - #58920, with extended flange; supersedes #56441; deflects sawdust and snow from starter mechanism. Requires new #58171-1A FAN HOUSING for clearance. Also see SM#454-CS.  
HOUSING, fan - #58171-1A supersedes #58171-1 and #58171; provides clearance for extended flange on new #58920 Starter Cup. See Baffle below.  
BAFFLE, fan housing - #58408 used in early model fan housings (#58171-1, #58171); cast into new #58171-1A Housing.  
WINTER FRONT - #58838 (accessory) covers fan housing grill; use only when temperature is below freezing.
- 3** TERMINAL, spark plug - #A-55373-A supersedes #A-55373; better seal improves starting.
- 4** TANK, fuel - #58172-A1 supersedes #58172-1 and #58172, requires new #A-58368-A CAP with new #58957 GASKET.  
CAP, tank - #A-58368-A (with gasket) supersedes #A-58368 (with "O" ring).  
GASKET, tank cap - #58957 supersedes #58395 "O" ring; prevents binding of cap.  
COVER, fuel tank - #58173-1 cemented to tank with Homelite Cement #22788; see SM#435-CS.
- 5** CRANKSHAFT - #58189-B (no keyways) supersedes #58189-A and #58189 (with keyways). See SM#434-CS. #58189-B requires #58546-1 (threaded) CLUTCH SPIDER; does not use SPACER between clutch cover and drivecase.  
#58189-A or #58189 (with keyways) require #55075-3A CLUTCH SPIDER, #55323-1A KEY (2 used), and #58347 SPACER (between clutch cover and drive case).  
SPIDER, clutch - #58546-1 (threaded) supersedes #55075-3A; see SM#434-CS.  
SHOE, clutch - #55076-1A; 3 used in "C-5" and early model "C-7"; 6 used in "C-9" and late model "C-7".  
COVER, clutch - #56101-A (assembled with #58347) Spacer in early model "C-5" with Keyed crankshaft only.
- 6** SLEEVE - #55290 supersedes grommet #58318.
- 7** MUFFLER CAP - #58425-A supersedes #58425.  
MUFFLER - #58184 (C-5 models) can be replaced with muffler (assembly) parts consisting of Index #71 thru #77 as shown for C-7 and C-9 models; see SM#449-CS.  
BAFFLE - #58423-A supersedes #58423; see SM#449-CS.  
TUBE - #58424-A supersedes #58424; see SM#449-CS.  
WASHER, flat - #58408 replaced #83056 lockwasher.
- 8** CYLINDER SHIELD - #A-58906-1 supersedes #58187-1 and #58187; extended flange protects operator's finger at throttle trigger.
- 9** CYLINDER - #58174-A supersedes #58174 in C-5 & C-7 models. #58174-A1 supersedes #58175 in C-9 models only.
- 10** CRANKCASE - #A-58317-A1 supersedes #A-58317 (C-5 models).
- 11** ELBOW - #A-58359-B supersedes #A-58359-A (enlarged impulse hole) and #A-58359; requires #58933 FILLER BLOCK (see below) and #55553-3 GASKET (see below). #58183-A supersedes #58183; impulse hole enlarged, requires #55553-3 GASKET.  
FILLER BLOCK - #58933 required with #A-58359-B ELBOW (reed); do not use with old #A-58359-A (enlarged impulse hole) or #A-58359 elbows since both include a metal spacer.  
GASKET - #55553-3 supersedes #55553-2, has enlarged impulse hole. See ELBOW (above).
- 12** REED - #55941-1 (stainless steel) supersedes #55941; see SM#453-CS.
- 13** LINE, fuel - #A-56379 supersedes #58363 (C-5).
- 14** CARBURETOR - #A-58360-A (HL-141B) supersedes #A-58360 (HL-141A). Refer to Carburetor Parts List #23692-A for #A-58360-A parts and Carburetor Parts List #23692 for #A-58360 parts. Also see SM#441-CS.  
REPAIR KIT, carburetor - #58681 for #A-58360-A; #58535 for #A-58360.  
GASKET SET, carburetor - #58535 for #A-58360-A and A-58360.
- 15** THROTTLE HANDLE - #A-58931-1 assembly supersedes #58179-1A, #58179-1, includes two #58929 nylon pump rod bushings and one #58930 nylon pump rod stop. Requires new #58356-A PUMP ROD, also provides clearance for new #58837 DEFLECTOR that may be attached to carburetor.  
STOP, pump rod (nylon) - #58930 included in A-58931-1 Throttle Handle; does not fit #58179-1A or #58179-1 Throttle Handle.  
BUSHING, pump rod (nylon) - #58929 included in #A-58931-1 Throttle Handle; does not fit #58179-1A or #58179-1.  
ROD, oil pump - #58356-A supersedes #58356, must be used in #A-58931-1 and #58179-1A Throttle Handles which provide adequate clearance for #58837 DEFLECTOR.  
DEFLECTOR, carburetor - #58837 can be used in #A-58931-1 or #58179-1A Throttle Handles which provide adequate clearance; also requires new #58356-A PUMP ROD.
- 16** SPRING, throttle - #58352-A supersedes #58352... tension increased.  
PIN, throttle lock - #58404 with #58405 SPRING and #58409 RING now supplied in "C-5" models.
- 17** CONNECTOR, oil pump - #58337-A supersedes #58337; solid cup improves rod-to-plunger connection.  
PLUNGER, oil pump - #A-57834-8 supersedes #A-57834-5, #A-57834-4; requires #59293 spring. #A-57834-5 and #A-57834-4 require #71762 spring.  
SPRING, plunger - #59293 must be used with #A-57834-8 PLUNGER.  
#71762 must be used with #A-57834-5 and #A-57834-4 PLUNGER.  
FILTER, oil - #A-58828 supersedes #AA-55259-A. See SM #445-CS supplement.  
LINE, oil filter - #58340-B supersedes #58340-A and #58340. See SM#145-CS (supp.), SM#459-CS.  
SPRING, check valve - #59022 supersedes #55288-A.  
DRIVE CASE - #A-58333-B1 supersedes #A-58333-1A and #A-58333-1; requires new FILTER, LINE, and SPRING (above). Incorporates new inlet fitting (#59023) which serves as check ball seat; see SM#459-CS.
- 18** BUMPER, spiked - #58396 supplied with "C-9" models, optional accessory for "C-5" and "C-7" models.

(continued on Page 7)



NOTES

- 19 SPROCKET & DRUM - #A-57344 (7 tooth, .404 pitch) standard equipment; optional assemblies also listed.
- 20 PLANETARY DRIVE - Available in .404 or 1/2" pitch; readily converts a DIRECT DRIVE SAW to a GEAR DRIVE SAW in minutes  
#A-58544-A supersedes A-58544  
#A-58556-A supersedes A-58556.
- 21 COVER, air filter- #A-59179 available for use in heavy snow. (accessory)

Learn More About Chainsaw Parts & Repair  
Do Not Sell or Reproduce

Description	Part No.	Description	Part No.
<b>TOOLS</b>		<b>PAINT</b>	
COMBINATION WRENCH	23808	SPRAY CAN - blue	23318
WRENCH - guide bar bolts (Req'd w/ #A-58398 HANDLE)	23727	SPRAY CAN - red	22771
PLIERS - snap ring #1	22828	SPRAY CAN - green	23343
REMOVER - rotor	A-23560	<b>DECALS</b>	
PLATE - shaft aligning	23670	"C-5" - pulley cover	58472 ▼
BODY - assembly fixture	23136	"C-5" - fuel tank	58473 ▼
SLEEVE - seal assembly	23001	"C-7" - pulley cover	58636 ▼
ADAPTER - bearing assembly	23820-2	"C-7" - fuel tank	58637 ▼
JACKSCREW ASSEMBLY	A-23672	"C-9" - pulley cover	58641 ▼
PLUG - seal assembly	23233-1	"C-9" - fuel tank	58642 ▼
PLUG - clutch bearing	23139	LO-HI"	58476 ▼
PLUG - needle bearing	23391-2	"DIRECT DRIVE"	58474 ▼
PLUG - drive case seal	23671	"GEAR DRIVE"	58475 ▼
PLUG - needle bearing (rod)	23234	"STARTING"	58679-A ▼
WRENCH - socket screw (rod)	23528		
PULLER - clutch spider (early "C-5" w/keyways)	A-23131		
ADAPTER - clutch spider (new threaded type)	A-23696		
WRENCH - spanner (rotor)	23710		
<b>PLANETARY DRIVE KIT:</b>			
PLUG - bearing (planetary)	23725-A		
PLUG - bearing (shaft & drum)	23726-A		
ADAPTER - sun gear	A-23696		
FIXTURE - sprocket holder	A-23713		

▼ Will not be available after present supply is exhausted.

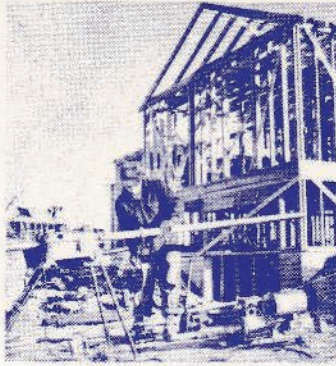
Replacement DECAL #23742 composed of "DIRECT DRIVE", "GEAR DRIVE", "STARTING INSTRUCTIONS", and two "HOMELITE" with letters 1/2" and 1/4" high will soon be available.



**You'll  
SPEED WORK  
and make  
MORE MONEY  
with...**



**HOMELITE**  
SELF-PRIMING PUMPS



**HOMELITE**  
DEPENDABLE GENERATORS



**HOMELITE**  
POWERFUL ONE-MAN CHAIN SAWS



**HOMELITE**  
ONE-MAN CONCRETE VIBRATORS



**HOMELITE** — BOSCH (Germany)  
ELECTRIC BUILDER'S HAMMERS

**All Powered By Famous HOMELITE Engines**

Homelite's two-cycle gasoline engines are the most efficient and dependable units of their kind ever built. Their two-cycle design, developed to perfection by Homelite engineers over the past 35 years, gives maximum power for the least weight because power is produced at every piston down stroke. As an added advantage, this design requires fewer moving parts which means greater dependability and lower maintenance



**HOMELITE**

PORT CHESTER, N. Y.

A **textron** DIVISION