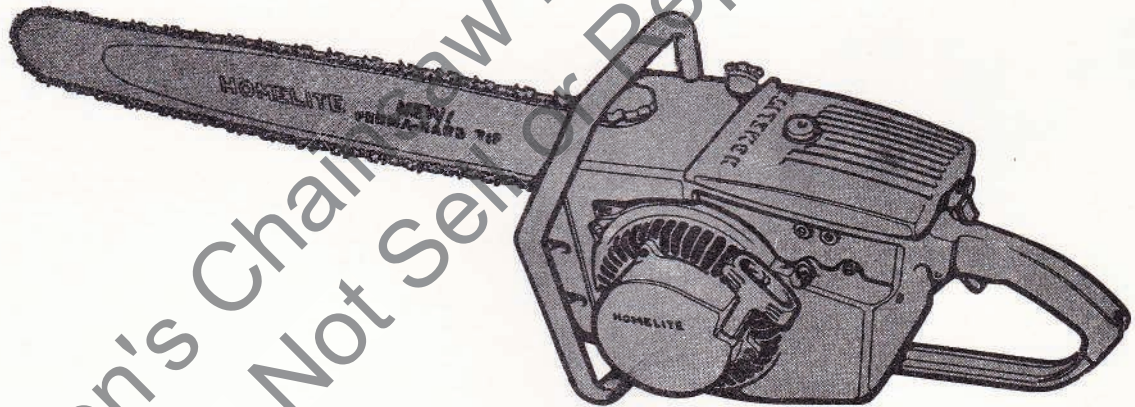


PRICE .35

HOMELITE

CHAIN SAW



C52

PARTS LIST

Leon's Chainsaw Parts & Repair
Do Not Sell or Reproduce

C52 CHAIN SAW

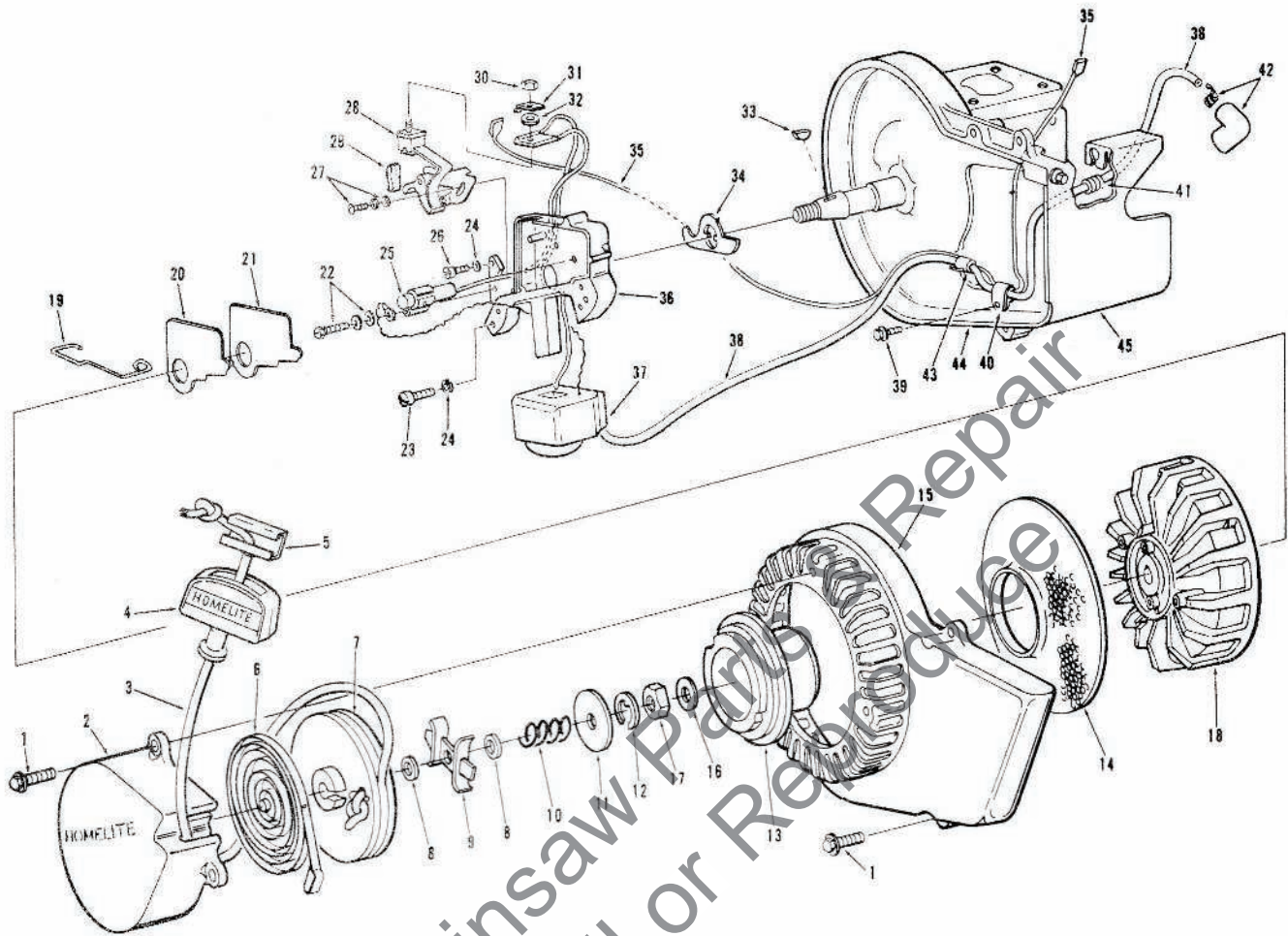


FIGURE 1

No.	Description	Part No.	Qty.	No.	Description	Part No.	Qty.
1	SCREW—hex hd., 12-24 x 3/4	80867	7	23	SCREW—fil hd., 10-24 x 7/8	80660	2
	STARTER ASSEMBLY (complete)	A- 58384-1A	1	24	WASHER—lock, no. 10	83046	3
	Includes:			25	CONDENSER—w/terminal	55987	1
2	COVER—bulley w/2 roll pins	A- 58502-1	1	26	SCREW—fil hd., 10-24 x 1/2	80595	1
3	ROPE—starter	55898	1	27	SCREW GROUP—point	57749	1
4	GRIP—rope	55937	1	28	BREAKER POINTS (set)	A- 58165	1
5	INSERT—rope retaining	58517	1		Includes:		
6	SPRING—rewind	56451-1	1	29	WICK—felt	55984	1
7	PULLEY—starter	56452	1	30	NUT—terminal	55982	1
8	WASHER—brake	58970	2	31	TAB—ground	57733	1
9	FRICTION SHOE ASSEMBLY	A- 57647	1	32	WASHER—terminal	55983	1
10	SPRING—brake	56455	1	33	KEY—rotor	75078	1
11	WASHER—brake retainer	76436	1	34	WASHER—sealing mounting	56292-A	1
12	RING—retaining	67906	1	35	LEAD—ground w/terminals	A- 58321	1
13	CUP—starter	58920-1	1	36	BOX—breaker w/core	57744	1
14	SCREEN—rotary	58294	1	37	COIL—w/ground terminal	55986-A	1
15	HOUSING—fan	59094-1	1	38	LEAD—high tension	58382	1
16	WASHER—flat, 7/16	84047	1	39	SCREW—hex hd., 10-24 x 3/8	80869-1	1
17	NUT—hex hd., 7/16-20	81104	1	40	CLAMP—lead	56014	1
18	ROTOR	57568-B	1	41	GROMMET	68046	1
19	CLAMP—dust cover	55980	1	42	TERMINAL—spark plug	A- 55373-A	1
20	COVER—dust	55979	1	43	SLEEVE	55290	1
21	GASKET—dust cover	55978-2	1	44	CRANKCASE (see fig. 2)	A- 58317-B1	1
22	SCREW GROUP—condenser	57750	1	45	SHIELD—cylinder	A- 59919-1	1

ALWAYS FURNISH MODEL AND SERIAL NUMBER WHEN ORDERING PARTS.

C52 CHAIN SAW

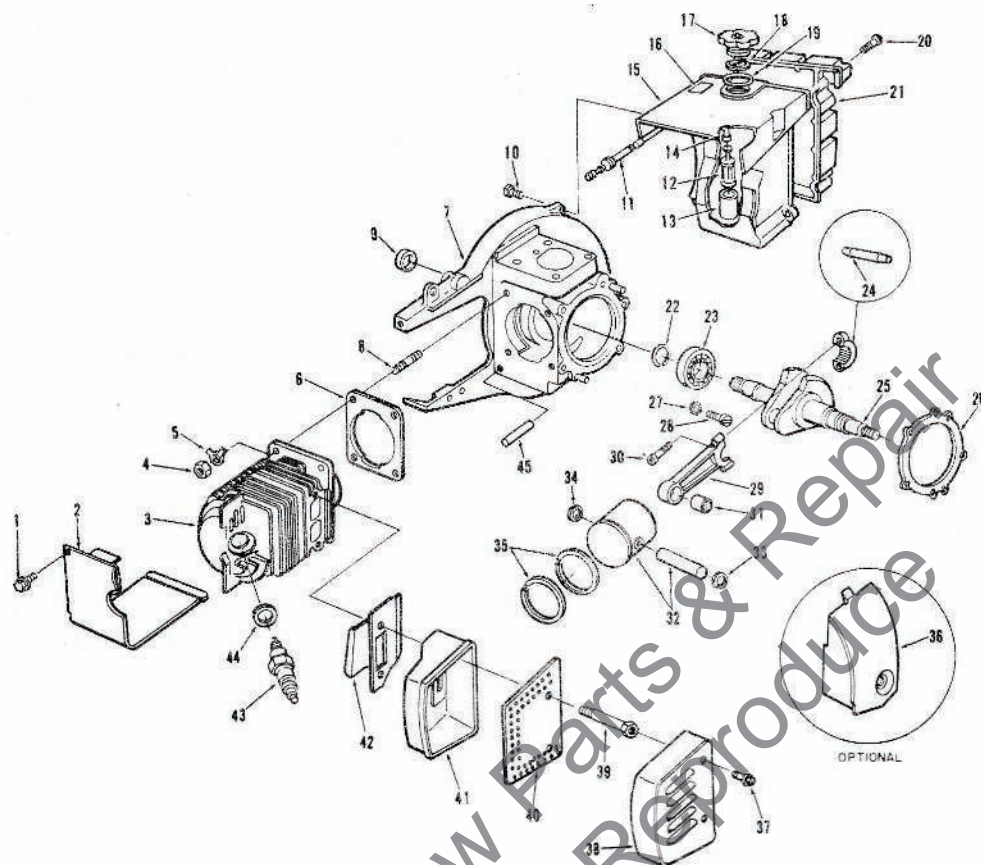


FIGURE 2

No.	Description	Part No.	Qty.	No.	Description	Part No.	Qty.
1	SCREW—hex hd., 10—24 x 3/8	80869-1	3	24	ROLLERS—set of 27	A- 65615	1
2	SHIELD—cylinder	A- 59919-1	1	* 25	CRANKSHAFT	59269-3	1
3	CYLINDER—2 in. bore	58174-2	1	26	GASKET—crankcase	63356	1
4	NUT—hex, 1/4—28	81065-2	4	27	WASHER—lock	83061	2
5	WASHER—lock, 1/4	83009	4	28	SCREW—bearing retainer	19238-3	2
6	GASKET—cylinder	58292	1	29	ROD—connecting	A- 59483-1	1
7	CRANKCASE	A- 58317-B1	1	Includes:			
8	Includes:			30	SCREW	80805	2
9	STUD	55871	4	31	BEARING—needle	59351	1
10	SEAL	58308-A	1	32	PISTON & PIN	A- 58328-B	1
11	SCREW—hex hd., 12—24 x 3/4	80867	4	Includes:			
12	FITTING—fuel outlet	58364	1	33	RING—retaining	55095	1
13	FILTER ASSEMBLY—fuel	A- 59251	1	34	RING—retaining	64742	1
14	Includes:			35	PISTON RING	55038	2
15	FILTER	59253-1	1	† 36	EXCHANGER—heat (optional)	59279	1
16	LINE—fuel (flexible)	55805	1	MUFFLER (complete)	A- 59652	1	
17	TANK—fuel	58172-4	1	Includes:			
18	DECAL—caution	64144	1	37	SCREW—hex hd., 12—24 x 3/8	80837	2
19	CAP—tank	A- 65741	1	38	CAP—muffler	58425-A	1
20	Includes:			39	STUD—muffler	59337	2
21	VALVE—relief	56865-1	1	40	BAFFLE—muffler	58423-A	1
22	GASKET—fuel filter cap	58957	1	41	BODY—muffler	A- 58419	1
23	SCREW—rd hd., no. 6 x 1/2	80513	15	42	DEFLECTOR—air	58639	1
	COVER—tank	58173-1	1	43	SPARK PLUG	40190-S	1
	GASKET—fuel tank cover	58367	1	Includes:			
	(optional—not shown)			44	GASKET	25038	1
	RING—retaining	58319-A	1	45	SLEEVE	55290	1
	BEARING—ball	58190-S	1				

† When HEAT EXCHANGER is installed, remove AIR DEFLECTOR

* Denotes new part

ALWAYS FURNISH MODEL AND SERIAL NUMBER WHEN ORDERING PARTS.

C52 CHAIN SAW

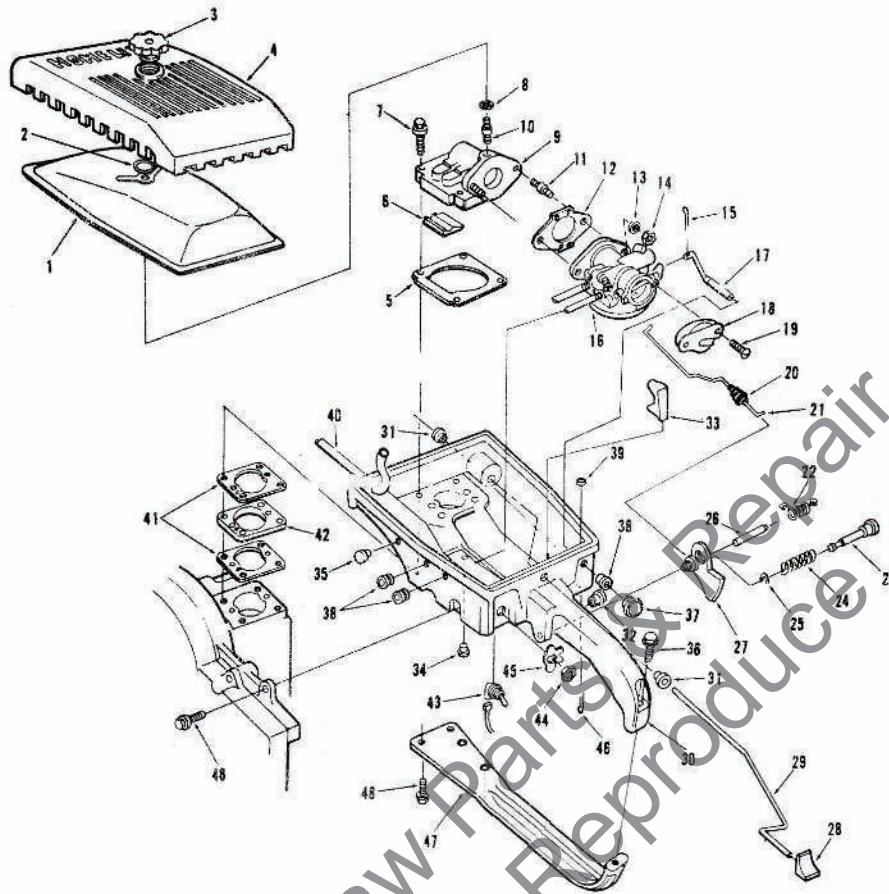


FIGURE 3

No.	Description	Part No.	Qty.	No.	Description	Part No.	Qty.
1	ELEMENT—air filter	63728	1	27	TRIGGER—throttle	58181-A	1
2	RING—retaining	58319-A	1	28	BUTTON—oil rod	58357	1
3	NUT—cover	A- 59229	1	29	ROD—oil pump	58356-B	1
4	COVER—air filter	59230-1	1	30	HANDLE—throttle	A- 63665	1
5	GASKET—elbow	58344	1		Includes:		
6	FILLER BLOCK	58933	1	31	BUSHING—rod	58929	2
7	SCREW—hex hd., 12—24 x 1-1/2	80868	4	32	BUSHING—latch pin	59064	1
8	GASKET—stud	58392	1	33	STOP—reed	58930	1
9	ELBOW—reed	A- 59490	1	34	PLUG—button	A- 64744	1
	Includes:				Includes:		
10	STUD—cover	58361	1		"O"RING (not shown)	59765	1
11	STUD—carburetor	27464	2	35	PLUG—button	64607	1
12	GASKET—carburetor	55553-3	1	36	SCREW—hex hd., 12—24 x 1	80864	1
13	WASHER—lock, 1/4	83009	2	37	BUTTON—choke rod	57289-1	1
14	NUT—hex, 1/4—20	81013-1	2	38	GROMMET	58362	3
15	COTTER PIN—1/32 x 1/2	86324	1	39	WASHER—felt	63290	1
16	CARBURETOR	A- 59427-A	1	40	LINE—fuel	55680	1
17	ROD—choke	A- 58354	1	41	GASKET—spacer	58343	2
18	DEFLECTOR—carburetor (optional)	58837-2	1	42	SPACER	58391	1
19	SCREW—pan hd., 10—32 x 1/2 (optional)	80625	2	43	SWITCH—toggle	A- 57650-3	1
20	BOOT—rod	58348	1		Includes:		
21	ROD—throttle	59338-A	1	44	NUT	72084-A1	1
22	SPRING—throttle	58352-A	1	45	PLATE—"ON-OFF"	72085-A	1
23	PIN—trigger latch	58404	1	46	COTTER PIN—1/16 x 1/2	86301	1
24	SPRING—latch	58405	1	47	BRACE—throttle handle	58185-A1	1
25	RING—retaining	58409	1	48	SCREW—hex hd., 12—24 x 3/4	80867	3
26	SHAFT—trigger	58353	1				

ALWAYS FURNISH MODEL AND SERIAL NUMBER WHEN ORDERING PARTS.

C52 CHAIN SAW

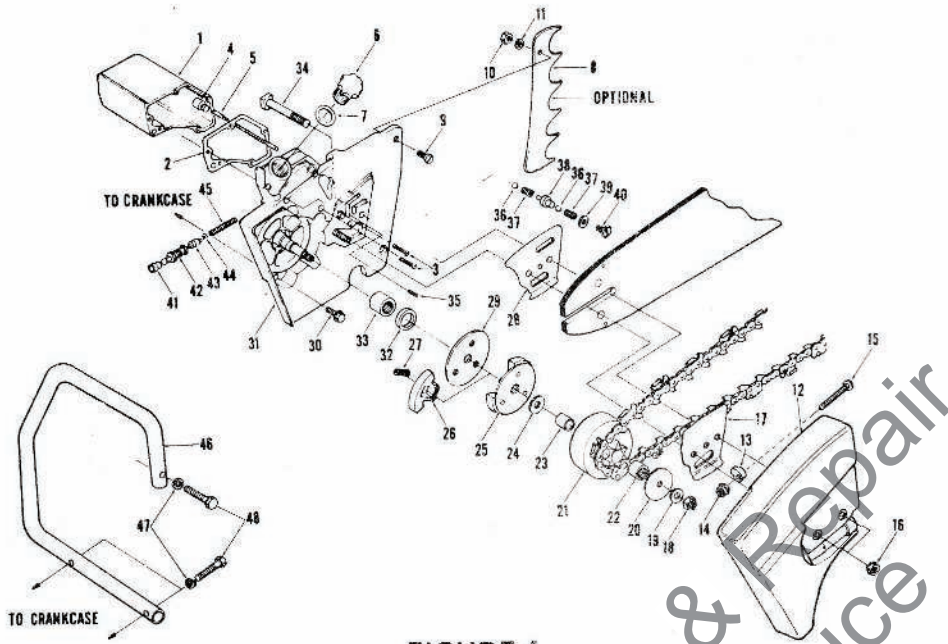


FIGURE 4

No.	Description	Part No.	Qty.	No.	Description	Part No.	Qty.
1	RESERVOIR—oil	A- 58341-A	1	23	RACE—inner	55584	1
	Includes:			24	WASHER—thrust (inner)	58833	1
2	GASKET—reservoir	67122	1	25	PLATE—clutch	63053-1	1
3	SCREW—fil, 8—32 x 3/4	82156	5	26	SHOE—clutch	64569	3
	PIN—cotter (not shown)	86301		27	SPRING—clutch	66842	3
4	FILTER—oil	A- 58828		28	PLATE—guide bar (inner)	56871-A	1
5	LINE—oil pickup	58340-B	1	29	COVER—clutch	63051	1
6	CAP—oil filler ①	A- 63717-A	1	30	SCREW—hex hd., 12—24 x 3/4	80867	5
	w/BOW GUIDE (optional)	A- 56580-1	1	31	DRIVECASE	A- 59493-C	1
	Includes:				Includes:		
7	GASKET	56607	1	32	TUBE—oil line (not shown)	59023	1
	VALVE—vent (not shown)	63718		33	SEAL	56256-A	1
8	KIT—spiked bumper	A- 58543	1	34	BEARING—needle	63043	1
	Includes:			35	BOLT—guide bar	58334	2
9	SCREW—flat hd., 1/4—20 x 3/4	80053	2	36	SCREW—plug	59621	1
10	NUT—hex hd., 1/4—20	81053	2	37	BALL—check	25527	2
11	WASHER—lock, 1/4	83009	2	38	SPRING	59022	2
12	COVER—drivecase	A- 58378-1	1	39	SEAT—valve	A- 67959	1
	Includes:			40	GASKET	67123	2
13	PIN—adjusting	55613-1	1	41	CAP—check valve	67958	2
14	NUT—5/16—18	81123	1	42	CONNECTOR—pump	58337-A	1
*15	SCREW—pin	82219	1	43	PLUNGER—oil pickup	A- 57834-10	1
16	NUT—hex, 3/8—16	81089-2	2		Includes:		
17	PLATE—guide bar (outer)	56872-B	1	43	"O"RING—shaft	59074	1
18	NUT—hex, 3/8—24	81192	1	44	"O"RING—plunger	74388	1
19	WASHER—flat, 3/8	84010-1	1	45	SPRING—plunger	59293	1
20	WASHER—thrust (outer) ③	58926	1	46	HANDLE BAR—flush cut	A- 65848-2	1
21	SPROCKET & DRUM ②				Optional:		
	Standard—3/8 in. pitch, 7 tooth ③	A- 59552	1		Wrap around	A- 58398	1
	Optional:				Flush cut (Reversible bow only)	A- 64727	1
	Open type:			47	WASHER—lock, 5/16	83003	3
	.404 in. pitch, 7 tooth ③	A- 59555	1	48	SCREW—hex hd., 5/16—18 x 1-1/2	80087	3
	3/8 in. pitch, 8 tooth	A- 63346	1				
	Includes:						
22	BEARING—needle	72311	1				
	(Optional—not shown)						
	DRUM & HUB—"splined" type sprocket	OM-10615	1				
	Includes:						
	BEARING—needle	55664	1				
	SPROCKET—splined						
	RIM TYPE—3/8 in. pitch, 7 tooth	OM-68210	1				
	.404 in. pitch, 7 tooth	OM-10513	1				

- ① BOW GUIDE requires A-56580-1 CAP.
- ② Check type and number of teeth on sprocket before ordering.
- ③ Use 55163-1 WASHER with .404 pitch—
Use 58926 WASHER with 3/8 pitch.

ACCESSORY

A-67511 KIT-drivecase cover (extended)

* Denotes new part.

C52 CHAIN SAW

SPECIAL TOOLS

22820-2	ADAPTER—main bearing
	BEARING PULLER—clutch drum (No. A-78 Snap-On or equivalent)
23136-2	BODY—assembly
A-22808	COMBINATION WRENCH
23670	PLATE—shaft aligning
A-23672	JACKSCREW
23488-B	KIT—loctite
22828	PLIERS—snap ring (piston)
A-23809	PLUG—needle bearing (conn. rod)
23233-1	PLUG—seal assembly
23671	PLUG—drivecase seal
23876	PLUG—bearing
A-23951	PLUG—piston pin
A-22560	REMOVER—rotor
A-23696-A	REMOVER—spider
A-23679	REMOVER—starter bearing
23693	SLEEVE—shaft (drivecase)
23139	TOOL—clutch drum bearing
23678	TOOL—starter bearing
23528	WRENCH—socket screw (conn. rod)

PAINT

24101	SPRAY CAN—blue
24453	SPRAY CAN—70 blue

REPLACEMENT DECAL No. 23742 composed of "DIRECT DRIVE", "GEAR DRIVE", "STARTING INSTRUCTIONS" and two "HOMELITE" (letters 1/2 in. and 1/4 in. high).

C52 CHAIN SAW

NUMERICAL INDEX

Part No.	Description	Qty.	Part No.	Description	Qty.	Part No.	Description	Qty.
A-5680-1	Cap	1	58340-1	Line-Oil Pickup	1	63043	Bearing	1
OM-10513	Sprocket	1	A-58341-A	Reservoir Assembly	1	63053-1	Plate	1
OM-10615	Drum & Hub	1	58343	Gasket	2	63290	Washer-Felt	1
19238-3	Screw	2	58344	Gasket	1	A-63346	Sprocket & Drum Assembly	1
25038	Gasket	1	58353	Shaft	1	63356	Gasket	1
25527	Ball	2	58356-B	Rod	1	A-63665	Handle Assembly	1
27464	Stud	1	58357	Button	1	A-63717-A	Cap-Oil Filler Assembly	1
40190-S	Spark Plug	1	58362	Grommet	1	63718	Valve-Vent	1
55038	Piston Ring	2	58348	Boot	1	63728	Element-Air Filter	1
55095	Ring	1	A-58354	Rod-Choke	1	64144	Decal	1
55290	Sleeve	2	58361	Stud	1	64569	Shoe	3
A-55373-A	Terminal	1	58364	Fitting	1	64607	Plug	1
55584	Race	1	58367	Gasket	1	A-64727	Handle-Flush Cut-Reversible Bow	1
55613-1	Pin	1	58382	Lead	1	64742	Ring	1
55664	Bearing	1	A-58384-1A	Starter Assembly	1	A-64744	Plug Assembly	1
55680	Line-Fuel	1	58391	Spacer	1	A-65518	Rollers (set of 27)	1
55805	Line-Oil	1	58392	Gasket	1	A-65741	Cap Assembly	1
55871	Stud	4	A-58398	Handle-Wrap Around	1	65842	Spring	3
55898	Rope	1	58409	Ring	1	A-65848-2	Handle-Flush Cut	1
55978-2	Gasket	1	A-58419	Body	1	67122	Gasket	1
55979	Cover	1	58423-A	Baffle	1	67123	Gasket	1
55980	Clamp	1	58425-A	Cap	1	A-67571	Kit-Drivecase Cover	1
55982	Nut	1	A-58502-1	Cover	1	67906	Ring	1
55983	Washer	1	58517	Insert	1	67958	Cap-Checkvalve	1
55984	Wick	1	58532-A	Spring	1	A-67959	Seat	1
55986-A	Coil	1	A-58543	Kit-Spiked Bumper	1	68046	Grommet	1
55987	Condenser	1	58639	Deflector	1	OM-68210	Sprocket-Rim Type	1
56014	Clamp	1	A-58828	Filter	1	72084-1	Nut	1
56256-A	Seal	1	58833	Washer-Thrust	1	72085-A	Plate-"ON-OFF"	1
56292-A	Washer	1	58837-2	Deflector	1	72311	Bearing	1
56451-1	Spring	1	58920-1	Cap	1	74388	O-Ring	1
56454	Pulley	1	58926	Washer Thrust	1	75078	Key	1
56455	Spring	1	58929	Bushing	2	76436	Washer	1
A-56580-1	Cap-Oil Filler Assembly W/Bow Guide	1	58930	Stop	1	FASTENING PARTS		
56607	Gasket	1	58933	Filler Block	1	80053	1/4-20 x 3/4	2
56865-1	Valve	1	58957	Gasket	1	80087	5/16-18 x 1-1/2	3
56871-A	Plate (inner)	1	58970	Washer	2	80513	Screw-Rd hd no. 6 x 1/2	15
56871-B	Plate (outer)	1	59022	Spring	2	80595	10-24 x 1/2	1
57289-1	Button	1	59023	Tube	1	80625	10-32 x 1/2	2
57568-B	Rotor	1	59064	Bushing	1	80660	10-24 x 7/8	2
A-57647	Friction Shoe Assembly	1	59074	O-Ring	1	80805	Screw	2
A-57650-3	Switch Assembly	1	59094-1	Housing	1	80837	12-24 x 38	2
57733	Tab	1	A-59229	Nut-Cover	1	80867	12-24 x 3/4	19
57744	Box	1	59230-1	Cover-Air Filter	1	80868	12-24 x 1-1/2	4
57749	Screw Group	1	A-59257	Filter Assembly	1	80869-1	10-32 x 3/8	4
57750	Screw Group	1	59253-1	Filter	1	81013-1	Nut-1/4-20	2
A057834-10	Plunger	1	59269-3	Crankshaft	1	81053	Nut-1/4-20	2
A-58165	Breaker Points set	1	59279	Exchanger	1	81065-2	Nut-1/4-28	4
58172-4	Tank	1	59293	Spring	1	81089-2	Nut-3/8-16	2
58173-1	Cover	1	59337	Stud	2	81104	Nut-7/16-20	1
58174-2	Cylinder	1	59338-A	Rod-Throttle	1	81123	Nut-5/16-18	1
58181-A	Trigger	1	59351	Bearing	1	81192	Nut-3/8-24	1
58185-A1	Brace	1	A-59427-A	Carburetor	1	82156	8-32 x 3/4	5*
58190-S	Bearing	1	A-59483-1	Rod-Connecting	1	*82219	Screw-Pin	1
58292	Gasket	1	A-59490	Elbow Assembly	1	83003	Washer-5/16	3
58294	Screen	1	A-59493-C	Drivecase Assembly	1	83009	Washer-1/4	8
58308-A	Seal	1	A-59552	Sprocket & Drum Assembly	1	83046	Washer No. 10	3
A-58317-B1	Crankcase Assembly	1	A-59555	Sprocket & Drum Assembly	1	83061	Washer-Lock	2
58319-A	Ring	2	59621	Screw	1	84010-1	Washer-3/8	1
A-58321	Lead	1	A-59652	Muffler Assembly	1	84047	Washer-7/16	1
A-58328-B	Piston & Pin Assembly	1	59765	O-Ring	1	86301	Pin-Cotter	2
58334	Bolt	2	A-59919-1	Shield	2	86324	Cotter Pin 1/32 x 1/2	1
58337-A	Connector	1						

* Denotes new parts.

HOMELITE

TEXTRON DIVISION

PORT CHESTER, N.Y. U.S.A.