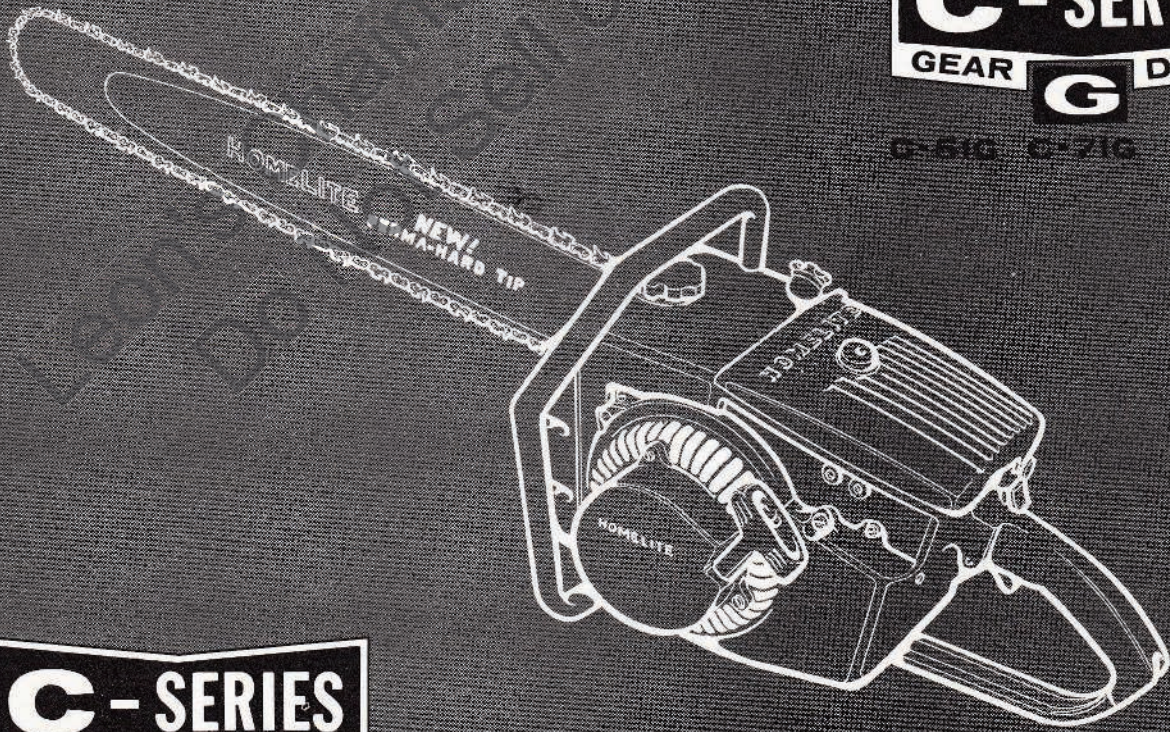


PRICE .25

# HOMELITE®

## Chain Saws



**C-SERIES**  
GEAR **G** DRIVE

C-51G C-71G C-91G

**C-SERIES**  
CONVERTIBLE DRIVE

C-51 C-71 C-91

PARTS LIST

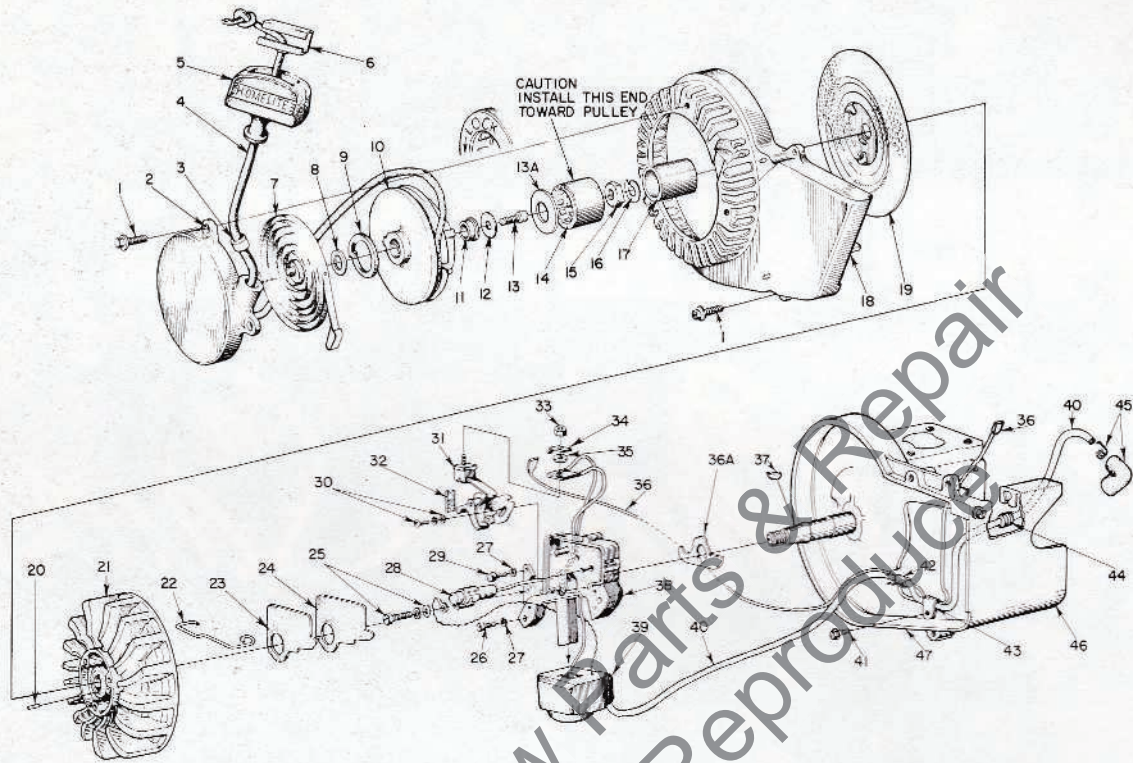


FIGURE 1

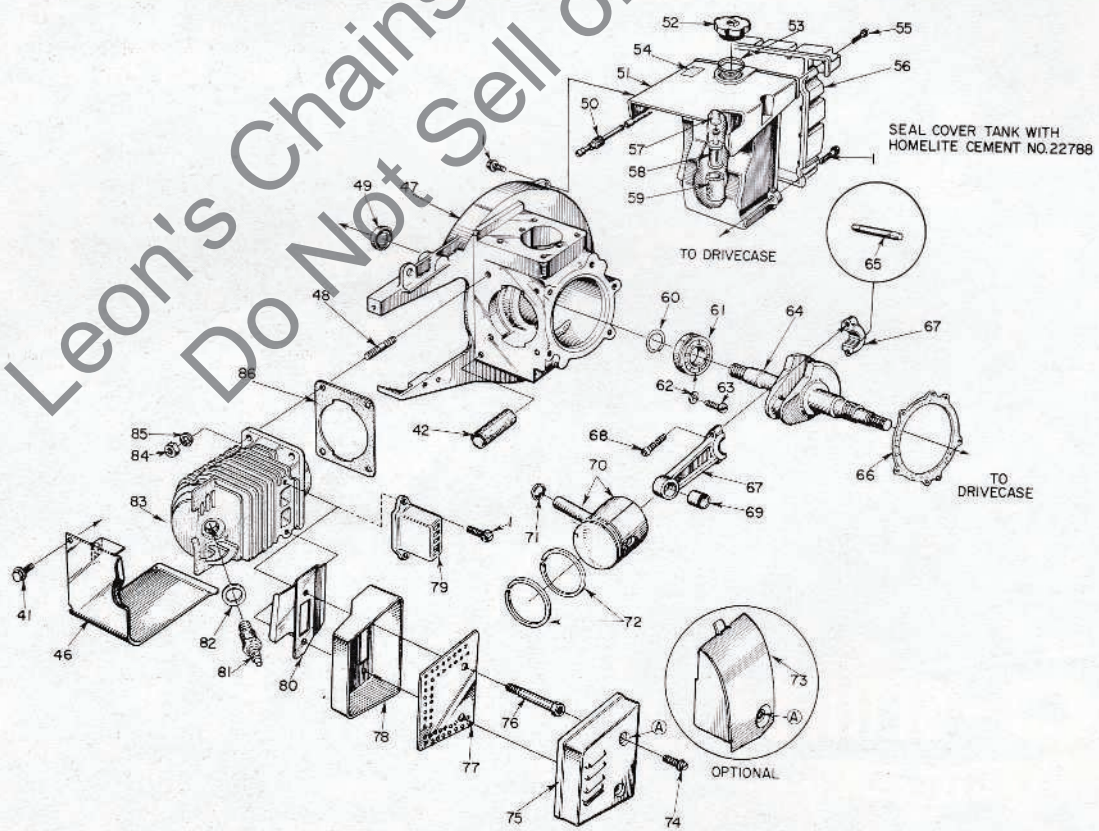


FIGURE 2

ALWAYS FURNISH MODEL AND SERIAL NUMBER WHEN ORDERING PARTS.

C-72 CHAIN SAWS  
C-51 CHAIN SAWS above serial #2520868

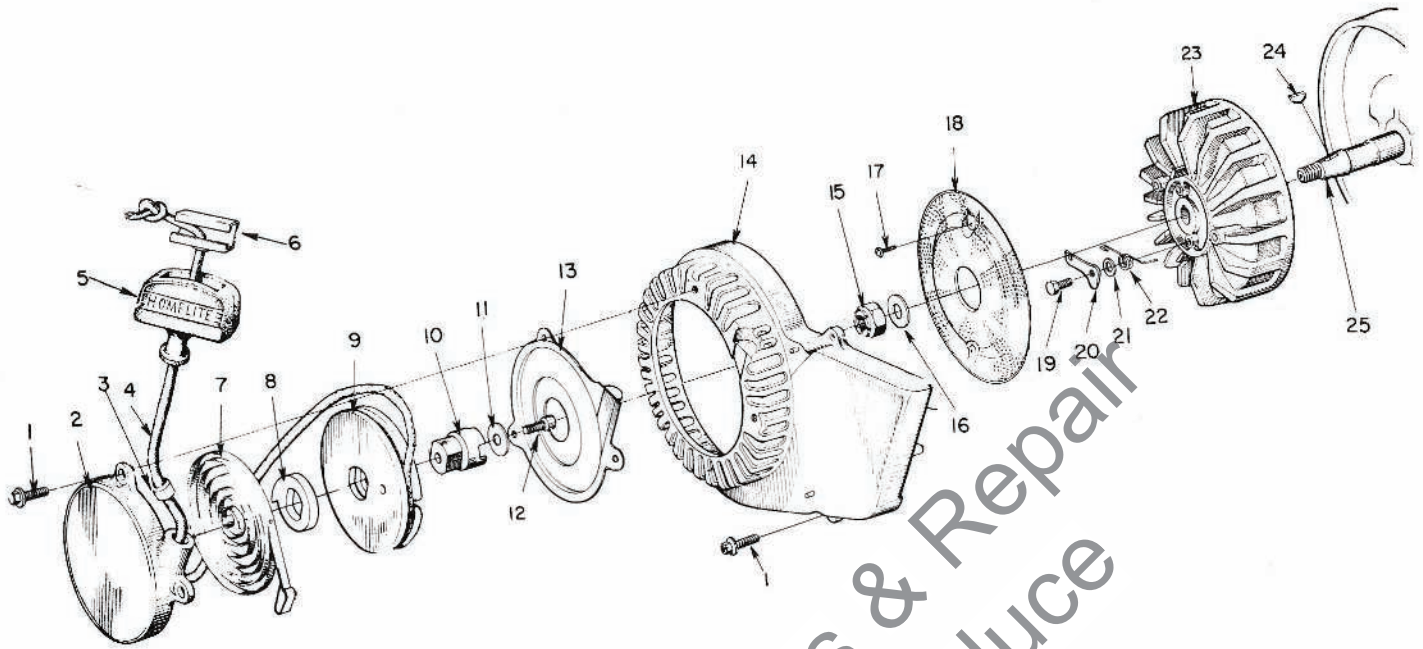


FIGURE 1

No.	Description	Part No.	Qty.	No.	Description	Part No.	Qty.
1.	SCREW - hex hd., 12-24 x 3/4	80867	7	14.	HOUSING - fan	59094-1	1
2.	COVER - starter	A-64178	1	15.	NUT - lock, 7/16-20	81104	1
3.	Includes: BUSHING - rope	59313	1	16.	WASHER - flat	84047	1
4.	ROPE - starter	58806	1	17.	SCREW - hex hd., Spinlock	80869-1	2
5.	GRIP - rope	55937	1	18.	SCREEN - rotary	64055	1
6.	INSERT - rope retaining	58517	1	19.	STUD - pawl starter	64054	2
7.	SPRING - rewind	64180-A	1	20.	PAWL - starter	58756	2
8.	LOCK - spring rewind	64049-A	1	21.	WASHER	58851	2
9.	PULLEY - starter	64050-1	1	22.	SPRING - starter pawl	58758-1	2
10.	CUP - starter	64051	1	23.	ROTOR	64053-A	1
11.	WASHER - retaining	58763	1	24.	KEY	75078	1
12.	SCREW - hex hd., 10-32 x 1/2	80648	1	25.	CRANKSHAFT - C-72 only	59270-2	1
13.	SHIELD - sawdust	64052	1		CRANKSHAFT - C-51 only	59269-2	1

For balance of C-72 parts refer to C-71 Parts List.

① Units above serial #2520868.



# HOMELITE CHAIN SAWS



Parts used in each model are indicated by an asterisk (\*) in the corresponding model column; a dagger (†) indicates an optional part available from your dealer. Parts indicated in #51, #71, or #91 columns fit C-51, C-71, C-91 DIRECT (convertible) DRIVE MODELS and C-51G, C-71G, C-91G GEAR (planetary) DRIVE MODELS unless otherwise noted. Service replacement parts are normally painted RED.

No.	Description	Part No.	51	71	91	Qty.
1	SCREW - hex hd., 12-24 x 3/4	80867	*	*	*	13
2	COVER - starter	A-59494-1	*	*	*	1
3	Includes: BUSHING - rope	59313	*	*	*	1
4	ROPE - starter	55898	*	*	*	1
5	GRIP - rope	55937	*	*	*	1
6	INSERT - rope retaining	58517	*	*	*	1
7	SPRING - rewind	64180	*	*	*	1
8	WASHER - thrust	58412	*	*	*	1
9	LOCK - spring rewind	58009	*	*	*	1
10	PULLEY - starter	A-59495	*	*	*	1
11	Includes: BUSHING	58007	*	*	*	1
12	WASHER - thrust	58413	*	*	*	1
13	SCREW - soc. hd., 10-32 x 3/8	80878	*	*	*	1
13A	GASKET	64015	*	*	*	1
14	BEARING - overrunning	58480-A	*	*	*	1
15	NUT - hex, 7/16-20	81191	*	*	*	1
16	WASHER - lock, 7/16	83019	*	*	*	1
17	RACE - inner	58268	*	*	*	1
18	HOUSING - fan	59094-1	*	*	*	1
19	SCREEN - rotary	58011-A	*	*	*	1
20	PIN - dowel	58429	*	*	*	1
21	ROTOR	57568-B	*	*	*	1
22	CLAMP - dust cover	55980	*	*	*	1
23	COVER - dust	55979	*	*	*	1
24	GASKET - dust cover	55978-2	*	*	*	1
25	SCREW GROUP - condenser	57750	*	*	*	1
26	SCREW - fil. hd., 10-24 x 7/8	80660	*	*	*	2
27	WASHER - lock, #10	83046	*	*	*	3
28	CONDENSER - w/terminal	55987	*	*	*	1
29	SCREW - fil. hd., 10-24 x 1/2	80595	*	*	*	1
30	SCREW GROUP - point	57749	*	*	*	1
31	POINT SET	A-58165	*	*	*	1
32	Includes: WICK	55984	*	*	*	1
33	NUT - terminal	55382	*	*	*	1
34	TAB - ground	57732	*	*	*	1
35	WASHER - terminal	55983	*	*	*	1
36	LEAD - ground w/terminals	A-58321	*	*	*	1
36A	SEAL - breaker box	58292-A	*	*	*	1
37	KEY - rotor	75078	*	*	*	1
38	BOX - breaker w/core	57744	*	*	*	1
39	COIL - w/ground terminal	55986-A	*	*	*	1
40	LEAD - high tension	58382	*	*	*	1
41	SCREW - hex hd., 10-24 x 3/8	80865	*	*	*	3
42	SLEEVE	58290	*	*	*	1
43	CLAMP - lead	56014	*	*	*	1
44	GROMMET	60929	*	*	*	1
45	TERMINAL - spark plug	A-55373-A	*	*	*	1
46	CYLINDER SHIELD	A-59919-1	*	*	*	1

No.	Description	Part No.	51	71	91	Qty.
47	CRANKCASE	A-58317-B1	*	*	*	1
48	Includes: STUD	55871	*	*	*	4
49	SEAL	58308-A	*	*	*	1
50	FITTING - fuel outlet	58364	*	*	*	1
51	TANK - fuel	58172-A1	*	*	*	1
52	CAP - tank	A-64140-A	*	*	*	1
53	Includes: GASKET	58957	*	*	*	1
54	DECAL	64144	*	*	*	1
55	SCREW - rd. hd., #6 x 1/2	80513	*	*	*	15
56	COVER - tank	58173-1	*	*	*	1
57	LINE - oil (flexible)	55805	*	*	*	1
58	FILTER ASSEMBLY	A-59251	*	*	*	1
59	Includes: FILTER	59253	*	*	*	1
60	RING - retaining	58319-A	*	*	*	1
61	BEARING - ball	58190-S	*	*	*	1
62	WASHER - lock	83061	*	*	*	2
63	SCREW - bearing retainer	19238-3	*	*	*	2
64	CRANKSHAFT	59269	*	*	*	1
		59270	*	*	*	1
65	ROLLERS - set of 27	AA-55280	*	*	*	1
66	GASKET	63356	*	*	*	1
67	CONNECTING ROD	A-59483	*	*	*	1
68	Includes: SCREW	80805	*	*	*	2
69	BEARING - needle	59351	*	*	*	1
70	PISTON & PIN	A-58328-A	*	*	*	1
		A-58653-A	*	*	*	1
		A-58674-A	*	*	*	1
71	Includes: RING - retaining	55095	*	*	*	1
72	RING - piston	55038	*	*	*	2
		55537	*	*	*	2
73	EXCHANGER - heat	59279	†	†	†	1
	Optional - See Note 1					
74	SCREW-hex hd., 12-24 x 3/8	80837	†	*	*	2
75	CAP - muffler	58425-A	†	*	*	1
76	STUD - muffler	59337	†	*	*	2
77	BAFFLE - muffler	58423-A	†	*	*	1
78	BODY - muffler	A-58419	†	*	*	1
79	MUFFLER - See Note 2	58184-1	*	*	*	1
80	DEFLECTOR - air	58639	†	*	*	1
	See Note 1					
81	SPARK PLUG - See Note 4	40190-S	*	*	*	1
82	Includes: GASKET	25038	*	*	*	1
83	CYLINDER - 2" bore - See Note 3	58174-2	*	*	*	1
	2-1/16" bore	58174-A1	*	*	*	1
84	NUT - hex, 1/4-28	81065-2	*	*	*	4
85	WASHER - lock, 1/4	83009	*	*	*	4
86	GASKET - cylinder	58292	*	*	*	1

NOTE 1: When HEAT EXCHANGER is installed remove AIR DEFLECTOR.  
 NOTE 2: "C-51" MUFFLER can be replaced with parts shown for other models.  
 NOTE 3: For "C51-AO" also.  
 NOTE 4: 71530-S Platinum Tip Plugs are also available as a service replacement.

Parts used in each model are indicated by an asterisk (\*) in the corresponding model column; a dagger (†) indicates an optional part available from your dealer. Parts indicated in #51, #71, or #91 columns fit C-51, C-71, C-91 DIRECT (convertible) DRIVE MODELS and C-51G, C-71G, C-91G GEAR (planetary) DRIVE MODELS unless otherwise noted. Service replacement parts are normally painted RED.

No.	Description	Part No.	51	71	91	Qty.
1	COVER - air filter	59230-1	*	*	*	1
2	NUT - cover	A-59229	*	*	*	1
3	RING - retaining	58319-A	*	*	*	1
4	ELEMENT - air filter	63728	*	*	*	1
6	SCREW - hex hd., 12-24 x 1-1/2	80868	*	*	*	4
6A	SCREW - hex hd., 1/4-20 x 1-1/2	80882	*	*	*	2
7	GASKET - stud	58392	*	*	*	1
8	ELBOW - reed w/#9, #10	A-59490	*	*	*	1
	ELBOW - reed w/#9, #10	A-63239	*	*	*	1
8A	ELBOW - See Note 7	58183-B	*	*	*	1
9	STUD - cover	58361	*	*	*	1
10	STUD - carburetor	27464	*	*	*	2
11	FILLER BLOCK	58933	*	*	*	1
12	GASKET - elbow	58344	*	*	*	1
12A	GASKET - elbow - See Note 7	55946	*	*	*	1
13	GASKET - carburetor	55553-3	*	*	*	1
14	ADAPTER - reed - See Note 7	55932-6	*	*	*	1
15	REED - See Note 7	55941-1	*	*	*	4
16	PLATE - reed - See Note 7	55942	*	*	*	4
17	SCREW - pan hd., See Note 7	80658	*	*	*	8
18	SCREW - hex hd., 12-24 x 1 See Note 7	80864	*	*	*	1
19	LINE - fuel	55680	*	*	*	1
20	WASHER - lock, 1/4	83009	*	*	*	4
21	NUT - hex, 1/4-20	81013	*	*	*	2
22	COTTER PIN - 1/32 x 1/2	86324	*	*	*	1
23	ROD - choke	A-58354	*	*	*	1
24	CARBURETOR - See Note 1	A-59427-A	*	*	*	1
25	ROD - throttle	59338	*	*	*	1
26	BOOT - rod	58348	*	*	*	1
27	DEFLECTOR - carburetor	58837-2	†	†	†	1
28	SCREW - pan hd., 10-32 x 1/2	80825	†	†	†	2
29	SPRING - idle - See Note 1 & 2	59319	*	*	*	1
30	SCREW - idle - See Note 1 & 2	59310	*	*	*	1
31	HANDLE - throttle - See Note 2	A-63665	*	*	*	1
32	Includes: STOP - rod	58930	*	*	*	1
33	BUSHING - rod	58929	*	*	*	2
34	BUSHING - lock pin	59064	*	*	*	1
35	SCREW PLUG	71505	*	*	*	1
35A	PLUG - button	64606	*	*	*	1
35B	PLUG - button	64607	*	*	*	1
36	GROMMET	58362	*	*	*	3
37	BUTTON - rod	57289-1	*	*	*	1
38	TRIGGER - throttle	58181-A	*	*	*	1
39	SHAFT - trigger	58258	*	*	*	1
40	SPRING - throttle	58652-A	*	*	*	1
41	PIN - throttle lock	58404	*	*	*	1
42	SPRING - lock	58405	*	*	*	1
43	RING - retaining	58409	*	*	*	1
44	BUTTON - oil rod	58357	*	*	*	1
45	ROD - oil pump	58356-B	*	*	*	1
46	COTTER PIN - 1/16 x 1/2	86301	*	*	*	1
47	SWITCH - toggle w/nut	A-58650-B	*	*	*	1
48	PLATE - "ON-OFF"	72085-A	*	*	*	1
49	GASKET - spacer	58343	*	*	*	2
50	SPACER	58391	*	*	*	1
51	SCREW - hex hd., 12-24 x 3/4	80867	*	*	*	8
52	BRACE - throttle handle	58185-A1	*	*	*	1
53	BUMPER - spiked	58396	†	†	†	1
54	NUT - hex, 1/4-20	81053	†	†	†	2
55	RESERVOIR - oil	A-58341	*	*	*	1
56	FILTER - oil	A-58828	*	*	*	1
57	LINE - oil filter	58340-B	*	*	*	1
58	GASKET - reservoir	58342	*	*	*	1
59	SPRING - plunger	59293	*	*	*	1

No.	Description	Part No.	51	71	91	Qty.
60	CONNECTOR - oil pump	58337-A	*	*	*	1
61	PLUNGER - oil pump	A-57834-10	*	*	*	1
62	Includes: "O" RING	74388	*	*	*	1
62A	"O" RING	59074	*	*	*	1
63	DRIVECASE	A-59493-A1	*	*	*	1
64	Includes: SEAL	56256-A	*	*	*	1
65	BEARING - needle	63043	*	*	*	1
66	BOLT - guide bar	58334	*	*	*	2
67	CAP - oil filler, See Note 3 w/Bow Guide	A-64340 A-56580-1	†	†	†	1
68	Includes: GASKET	50607	*	*	*	1
69	CAP - check valve	58339	*	*	*	2
70	GASKET	58338	*	*	*	2
71	SPRING - check valve	59022	*	*	*	2
72	BALL - check	25527	*	*	*	2
73	SCREW - flat hd., 1/4-20 x 1/4	80053	*	*	*	2
74	SCREW - rd. hd., #6 x 3/4	80790	*	*	*	5
75	HANDLE BAR - flush out Optional: Wrap around	A-58379-2 A-58398	†	†	†	1
76	WASHER - lock, 5/16	83003	*	*	*	3
77	SCREW - hex, 5/16-18 x 1-1/2	80987	*	*	*	3
78	COVER - clutch	54101-A	*	*	*	1
79	SPRING - clutch	55123-C	*	*	*	2
80	SHOE - clutch	55076-3	*	*	*	3
81	SPIDRER - clutch	58546-1	*	*	*	1
82	WASHER - thrust, See Note 6	55660-1	*	*	*	1
83	PLATE - guide bar (inner)	56871-A	*	*	*	1
84	PLATE - guide bar (outer)	56872-B	*	*	*	1
NOTE: Parts listed below used in C-51, C-71, C-91 DIRECT DRIVE MODELS - See Page 6 for parts used in Gear Drive Models.						
85	RACE - inner	55661	*	*	*	1
86	SPROCKET & DRUM - See Note 4 Open type - 3/8" pitch, 8 tooth .404 pitch, 7 tooth 7/16" pitch, 7 tooth 1/2" pitch, 6 tooth	A-58923 A-57344 A-56377 A-56019	†	†	†	1
87	Includes: BEARING - needle	55664	*	*	*	1
88A	SPROCKET & DRUM - See Note 4 Rim Type - 7/16" pitch, 7 tooth	A-57363-A	†	†	†	1
87A	Includes: BEARING - needle	77403	†	†	†	1
	New "Splined" Type - not shown See Note 4					
	DRUM & HUB - sprocket (see below)	A-63289	†	†	†	1
	Includes: BEARING - needle	55664	†	†	†	1
	SPROCKET - splined Rim Type - 3/8" pitch, 7 tooth .404 pitch, 7 tooth 1/2" pitch, 7 tooth	63284 63285 63287	†	†	†	1
88	WASHER - thrust	55163-1	*	*	*	1
89	WASHER - flat, 3/8	84010-1	*	*	*	1
90	NUT - hex, 3/8-24	81192	*	*	*	1
91	COVER - drive case	A-58378-1	*	*	*	1
91A	Optional	A-58683	†	†	†	1
92	Includes: NUT - 5/16-18	81123	*	*	*	1
93	PIN - adjusting	55613-1	*	*	*	1
94	SCREW - pin	80617	*	*	*	1
95	NUT - hex, 3/8-16	81089-2	*	*	*	2
96	PLANETARY DRIVE KIT - See Note 5					
	for BOW GUIDE - .404 pitch	A-58544-A	†	†	†	1
	for BOW GUIDE - .404 pitch	A-58544-A1	†	†	†	1
	for BOW GUIDE - 1/2" pitch	A-58556-A	†	†	†	1
	for BOW GUIDE - 1/2" pitch	A-58556-A1	†	†	†	1

NOTE 1: Service replacement carburetor #A-59427-A supplied with idle stop screw and spring which must be removed when external idle adjustment screw (#30) is used. Refer to Carburetor Parts List 23904 for repair parts.

NOTE 2: Service replacement handle #A-59496-1 supplied with screw plug (#35). Remove to install external idle adjusting screw (#30).

NOTE 3: BOW GUIDE requires #A-56580-1 CAP.

NOTE 4: Check type and number of teeth on sprocket before ordering.

NOTE 5: Refer to page 6 (Fig. 5) for replacement parts.

NOTE 6: Direct Drive Models only, no longer used in Gear Drive Models. Refer to page 6 (Fig. 5).

NOTE 7: For Model "C-91" Saws below Serial #1854403.

Now available for Direct Drive Models:

#A-59671 AUTOMATIC OILER KIT - .404 pitch, 7 tooth  
#A-59682 AUTOMATIC OILER KIT - 7/16" pitch, 7 tooth

(Instructions and parts list included with each kit.)

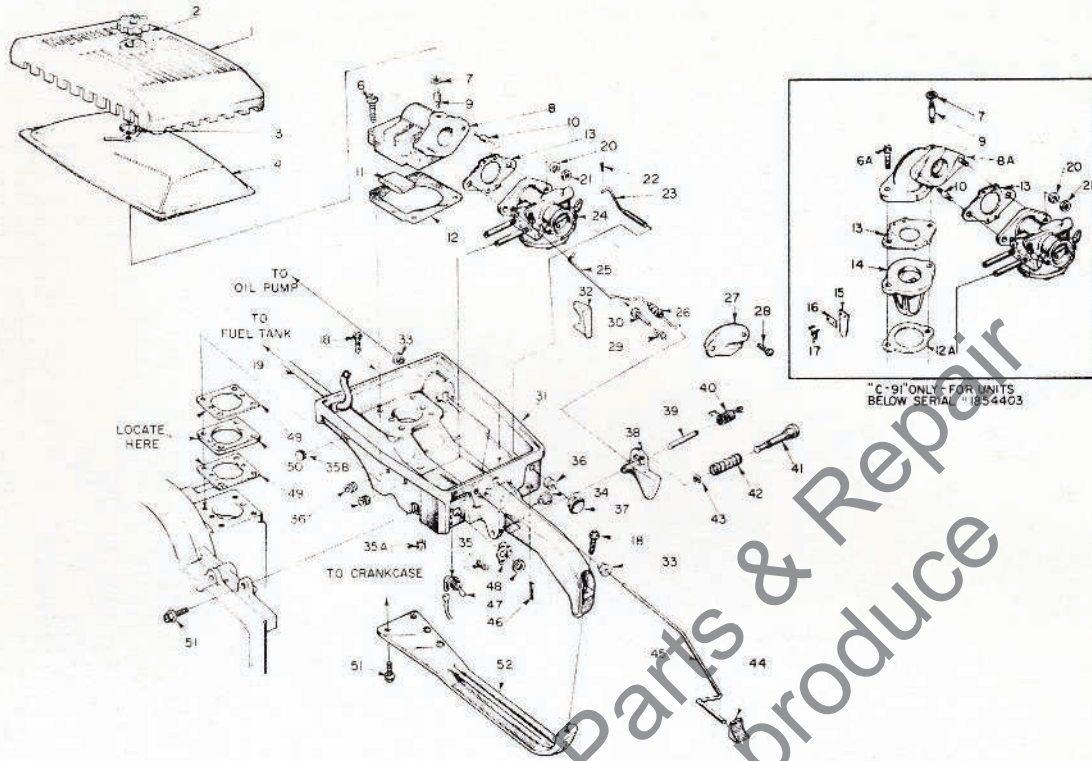


FIGURE 3

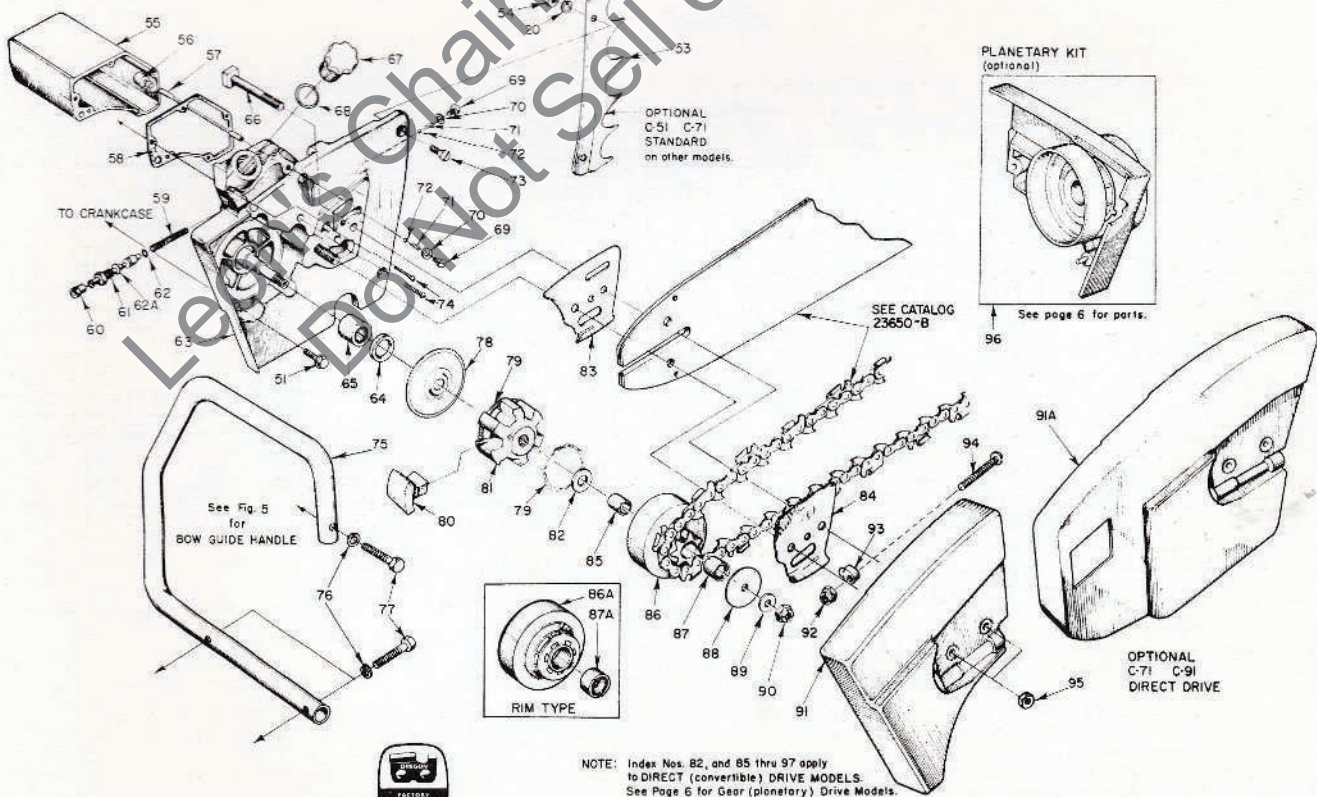
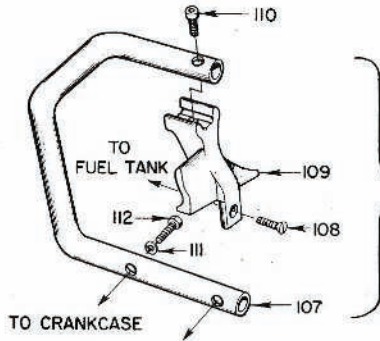
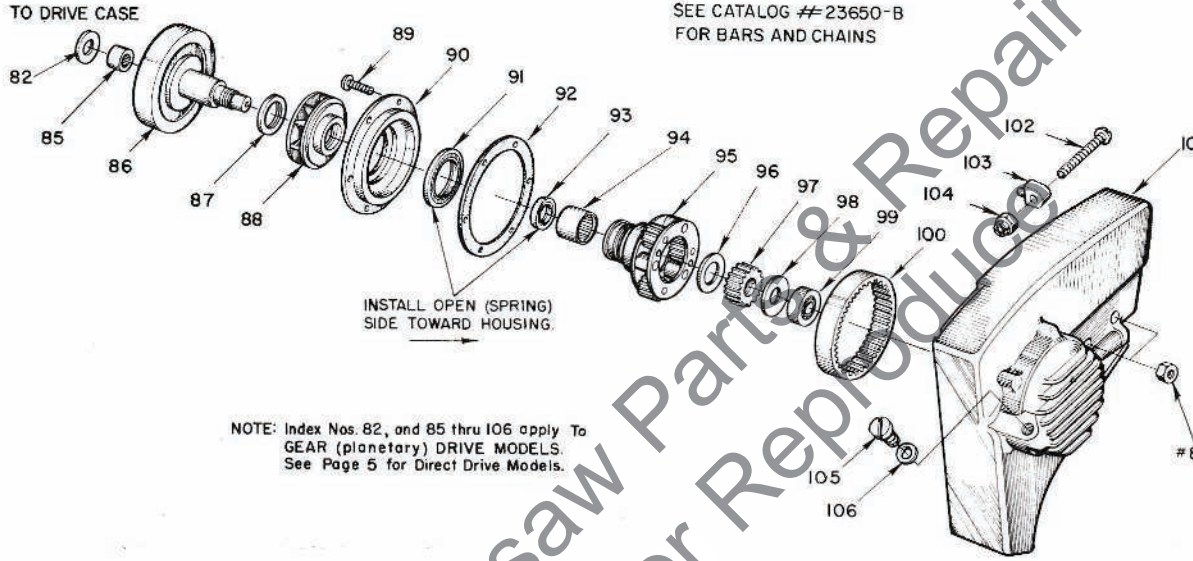


FIGURE 4

ALWAYS FURNISH MODEL AND SERIAL NUMBER WHEN ORDERING PARTS.



Used on all Models with BOW GUIDE attachment.



SEE CATALOG #23650-B FOR BARS AND CHAINS

NOTE: Index Nos. 82, and 85 thru 106 apply To GEAR (planetary) DRIVE MODELS. See Page 5 for Direct Drive Models.

FIGURE 5

No.	Description	Part No.	51	71	91	Qty.	No.	Description	Part No.	51	71	91	Qty.
82	WASHER - thrust, phenolic	59929	*	*	*	1	99	BEARING - ball	58120-S	*	*	*	1
85	BEARING - needle	58550	*	*	*	1	100	GEAR - ring	58107	*	*	*	1
86	SHAFT & DRUM - See Note	A-58128	*	*	*	1	101	HOUSING - gear w/pins	A-58568	*	*	*	1
87	WASHER - thrust	58583	*	*	*	1		HOUSING - for bow guide	A-58568-1	*	*	*	1
88	SPROCKET - .404 pitch, 8 tooth	A-58469-A*	*	✓	✓	1	102	Includes: SCREW - 5/16-18 x 2	80617	*	*	*	1
	1/2" pitch, 7 tooth	A-58468-A*	✓	*	*	1	103	PIN - adjusting	55613-1	*	*	*	1
89	SCREW - pan hd., 6/32 x 1/2	80630	*	*	*	6	104	NUT - 5/16-18	81123	*	*	*	1
90	COVER - housing	A-58122	*	*	*	1	105	CAP - oil filler	58482	*	*	*	1
91	Includes: SEAL	58126	*	*	*	1	106	GASKET	55107	*	*	*	1
92	GASKET - housing	58124	*	*	*	1		Required for ALL models with BOW GUIDE					
93	SEAL	58128	*	*	*	1	107	HANDLE - flush cut	A-58719	*	*	*	1
94	BEARING - needle	58133	*	*	*	1	108	SCREW - socket 5/16-18 x 7/8	80886	*	*	*	1
95	PLANETARY GEARS & FOLLOWER	A-58119-A	*	*	*	1	109	BRACKET - handle	58685-2	*	*	*	1
96	WASHER - thrust	59081	*	*	*	1	110	SCREW - socket 5/16-18 x 1	80308	*	*	*	1
97	GEAR - sun (drive)	58109-1A	*	*	*	1	111	WASHER - lock, 5/16	83003	*	*	*	2
98	WASHER - thrust	58118-A	*	*	*	1 or 2	112	SCREW - hex, 5/16-18 x 1-1/2	80087	*	*	*	2

NOTE: Six (6) CLUTCH SHOES #55076-3 required for GEAR DRIVE MODELS.

\* In .404 pitch PLANETARY DRIVE KIT #A-58544-A, #A-58544-A1 (BOW GUIDE)  
 ≠ In 1/2" pitch PLANETARY DRIVE KIT #A-58556-A, #A-58556-A1 (BOW GUIDE)



# HOMELITE CHAIN SAWS



## TOOLS

Part No.	Description
A-22808	COMBINATION WRENCH
A-23809	PLUG - needle bearing (conn. rod)
23528	WRENCH - socket screw (conn. rod)
22828	PLIERS - snap ring (piston)
AA-22560	REMOVER - rotor
23136	BODY - assembly
22820-2	ADAPTER - main bearing
A-23672	JACKSCREW
23670	PLATE - shaft aligning
23233-1	PLUG - seal assembly
23671	PLUG - drive case seal
23693	SLEEVE - shaft (drive case)
23876	PLUG - bearing
23391-2	TOOL - drive case bearing
23139	TOOL - clutch drum bearing
A-23696	REMOVER - spider, sun gear
23678	TOOL - starter bearing
A-23679	REMOVER - starter bearing
A-23713	TOOL - sprocket holder
23725-A	PLUG - planetary bearing
23726-A	PLUG - bearing (planet drum)
-	BEARING PULLER - clutch drum (#A-78 Snap-On or equivalent)
A-23951	PLUG - Piston Pin

## PAINT

23318	SPRAY CAN - blue
22771	SPRAY CAN - red
23343	SPRAY CAN - green

REPLACEMENT DECAL #23742 composed of "DIRECT DRIVE", "GEAR DRIVE", "STARTING INSTRUCTIONS" and two "HOMELITE" (letters 1/2" and 1/4" high).

Leon's Chainsaw Parts & Repair  
Do Not Sell or Reproduce



**You'll  
SPEED WORK  
and make  
MORE MONEY  
with...**

# **HOMELITE**

**SELF-PRIMING PUMPS**



**DEPENDABLE GENERATORS**



**POWERFUL ONE-MAN CHAIN SAWS**



**ONE-MAN CONCRETE VIBRATORS**



**ELECTRIC BUILDER'S HAMMERS**



Printed in United States of America

Part No. 23808 Rev. #1

167

## **HOMELITE<sup>®</sup>**

A **textron** DIVISION

**PORT CHESTER, N. Y.**

Illustrated in **INSPECTIVE<sup>®</sup>** and  
prepared by **PURNELL COMPANY, INC.**  
Boston, Mass.