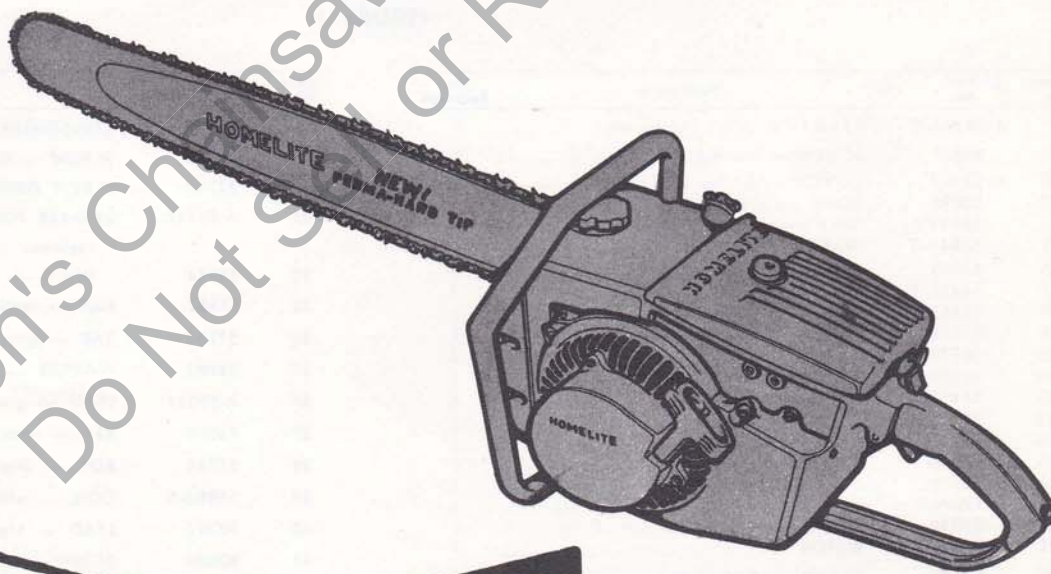


# HOMELITE

## Chain Saw



### PARTS LIST

# HOMELITE **C 51** CHAIN SAW

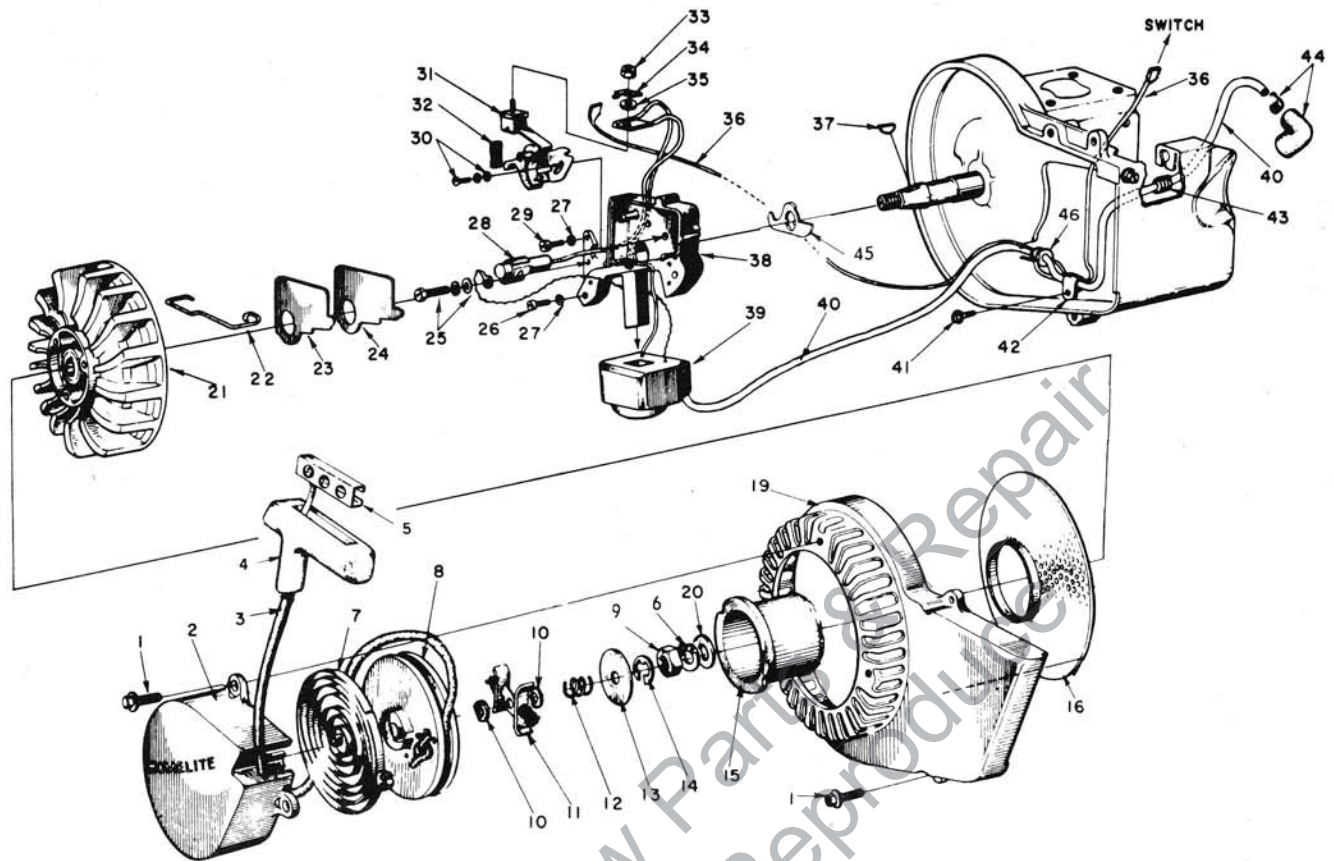
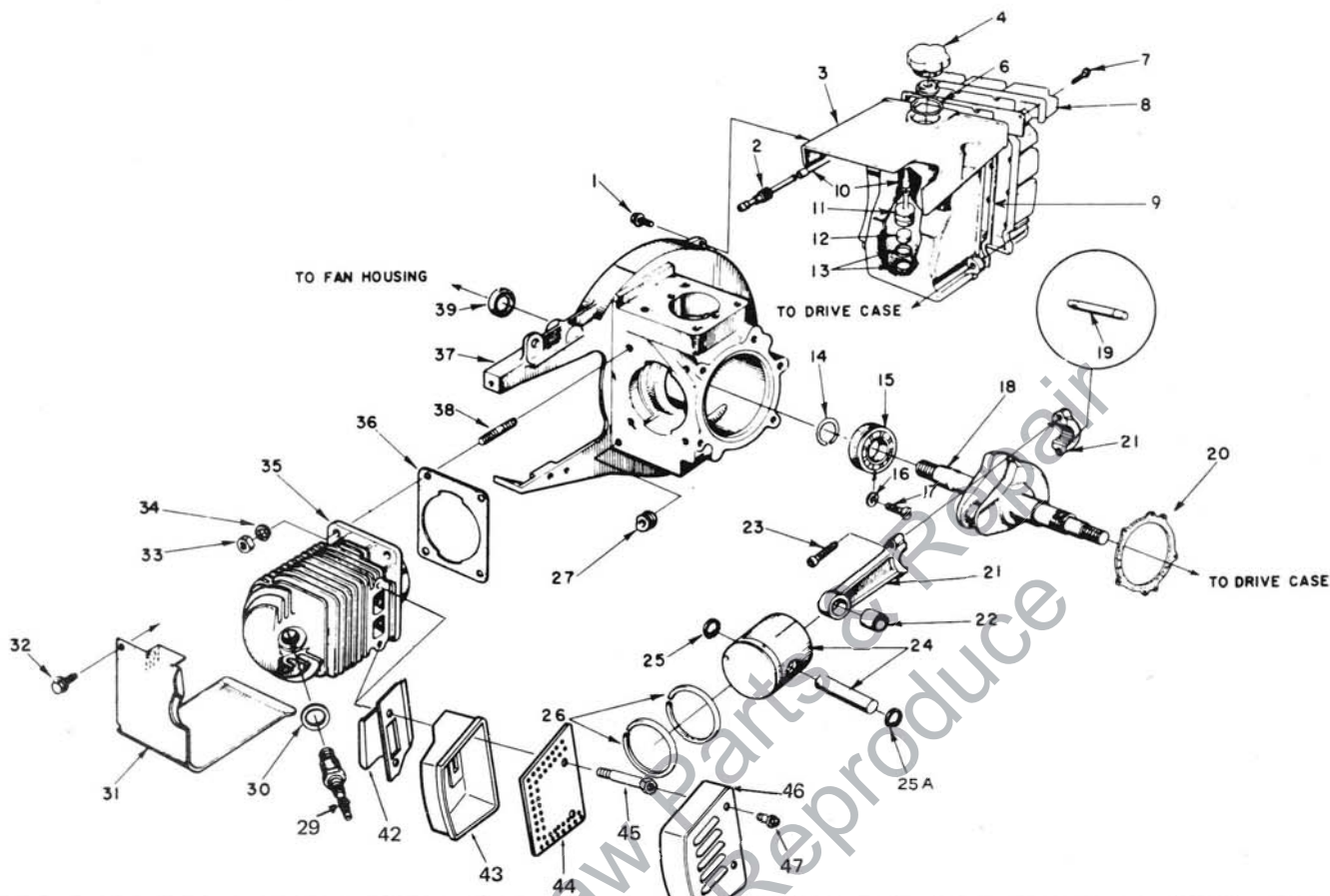


FIGURE 1

Index No.	Part No.	Description	No. Required
	A-58384-T	STARTER ASSY (Complete)	1
1	80867	SCREW — hex hd., #12-24 x 3/4	7
2	A-58502	COVER — pulley w/2 roll pins	1
3	55898	ROPE — starting	1
4	58915	GRIP — starting	1
5	58847-T	INSERT — grip	1
6	83019	WASHER — lock 7/16	1
7	56451-1	SPRING — rewind	1
8	56452	PULLEY — starter	1
9	81110	NUT — hex 2/16 - 20	1
10	58970	WASHER — fibre	2
11	A-57647	FRICITION SHOE ASSEMBLY	1
12	56455	SPRING — brake	1
13	76436	WASHER — brake retainer	1
14	90618	RING — retaining	1
15	58920-T	CUP — starter	1
16	58294	SCREEN — rotary	1
19	59094-3	HOUSING — fan	1
20	84055	WASHER — flat aluminum, 7/16	1
21	57568-B1	ROTOR	1
22	55980	CLAMP — dust cover	1
23	55979	COVER — dust	1
24	55978-2	GASKET — dust cover	1
25	57750	SCREW GROUP — condenser fastening	1
26	80660	SCREW — fl. hd., 10-24 x 7/8	2
27	83046	WASHER — lock, #10	3

Index No.	Part No.	Description	No. Required
28	55987	CONDENSER — with terminal	1
29	80595	SCREW — fl. hd., 10-24 x 1/2	1
30	57749	SCREW GROUP — point fastening	1
31	A-58165	BREAKER POINTS (set)	1
		Includes	
32	55984	WICK — felt	1
33	55982	NUT — terminal	1
34	57733	TAB — ground	1
35	55983	WASHER — terminal	1
36	A-58321	LEAD — ground w/terminals	1
37	75078	KEY — rotor	1
38	57744	BOX — breaker, w/core	1
39	55986-A	COIL — with ground terminal	1
40	58382	LEAD — high tension	1
41	80869	SCREW — hex hd., 10-24 x 3/8	1
42	56014	CLAMP — lead	1
43	68046	GROMMET	1
44	A-55373-A	TERMINAL — (sparky)	1
45	56292-A	SEAL — breaker box	1
46	55290	Sleeve	1



Index No.	Part No.	Description	No. Required	Index No.	Part No.	Description	No. Required
1	80867	SCREW — hex hd., # 12-24 x 3/4	4	25	55095	RING — pin retaining	1
2	58364	FITTING — outlet (fuel line)	1	25A	64742	RING — pin retaining	1
3	* 58172-5T	TANK — fuel	1	26	55038	RING — piston	2
4	A-120873	CAP — vented fuel tank	1	27	55290	SLEEVE	1
		Includes		29	40190-S	SPARK PLUG	1
6	58957	GASKET	1	30	25038	GASKET	1
7	*120543	SCREW — rd. hd., #8 x 1/2	15	31	A-59919-3	CYLINDER SHIELD	1
8	*58173-3T	COVER — fuel tank	1	32	80869	SCREW — hex hd., 10-24 x 3/4	2
9	*58367	GASKET	1	33	81065-2	NUT — hex, 1/4-28	4
10	55805	SLEEVE — flexible	1	34	83009	WASHER — lock, 1/4	4
11	A59251	FILTER — assy	1	35	A-69170	CYLINDER	1
		Includes		36	58292	GASKET — cylinder	1
12	59253	FILTER	1	37	A-58317-T	CRANKCASE	1
		Includes					
14	58319-A	RING — retaining	1	38	55871	STUD	4
15	58190-S	BEARING — ball	1	39	58308A	SEAL — garlock	1
16	83061	WASHER — lock	2		A-59652	KIT — Muffler	1
17	19238-3	SCREW — bearing retaining	2			Includes	
18	58189-B	CRANK SHAFT	1	42	58639	DEFLECTOR, Air	1
19	AA-55280	ROLLERS — set of 27	1	43	A-58419-1	BODY, Muffler	1
20	63356	GASKET	1	44	58423-A	BAFFLE, Muffler	1
21	A59483-1	CONNECTING ROD	1	45	59337	STUD, Muffler	2
		Includes		46	58425-1	CAP, Muffler	1
22	59351	BEARING — needle	1	47	80837	SCREW, Hex. Hd 12-24 x 3/8	2
23	80805	SCREW — socket hd., 8-32 x 9/16	2				
24	A-121687	KIT, SERVICE PISTON	1				
		Includes					

\* Supplied as a Tank Assembly A58366-1T

### SPECIAL TOOLS

Part No.	Description	Part No.	Description
AA-22560	MAGNETO ROTOR REMOVER ASSEMBLY	23139	ASSEMBLY TOOL — clutch drum bearing
C-50957	WRENCH Spider Remover	23876	ASSEMBLY TOOL — needle bearing
23136	FIXTURE — body assembling	23671	ASSEMBLY TOOL — drive case seal
23693	SLEEVE (for garlock seal)	22828	PLIERS — for Tru-arc ring (piston)
22820-2	ADAPTER — bearing assembling	A-23809	NEEDLE BEARING TOOL (conn. rod)
A-23672	JACKSCREW ASSEMBLY	23528	WRENCH — socket screw (conn. rod)
23670	PLATE — shaft aligning	23318	SPRAY CAN — blue paint
23233-1	PLUG — seal assembling		

A-22808-T

COMBINATION WRENCH

Always furnish saw model and serial number when ordering parts.

# HOMELITE **C 51** CHAIN SAW

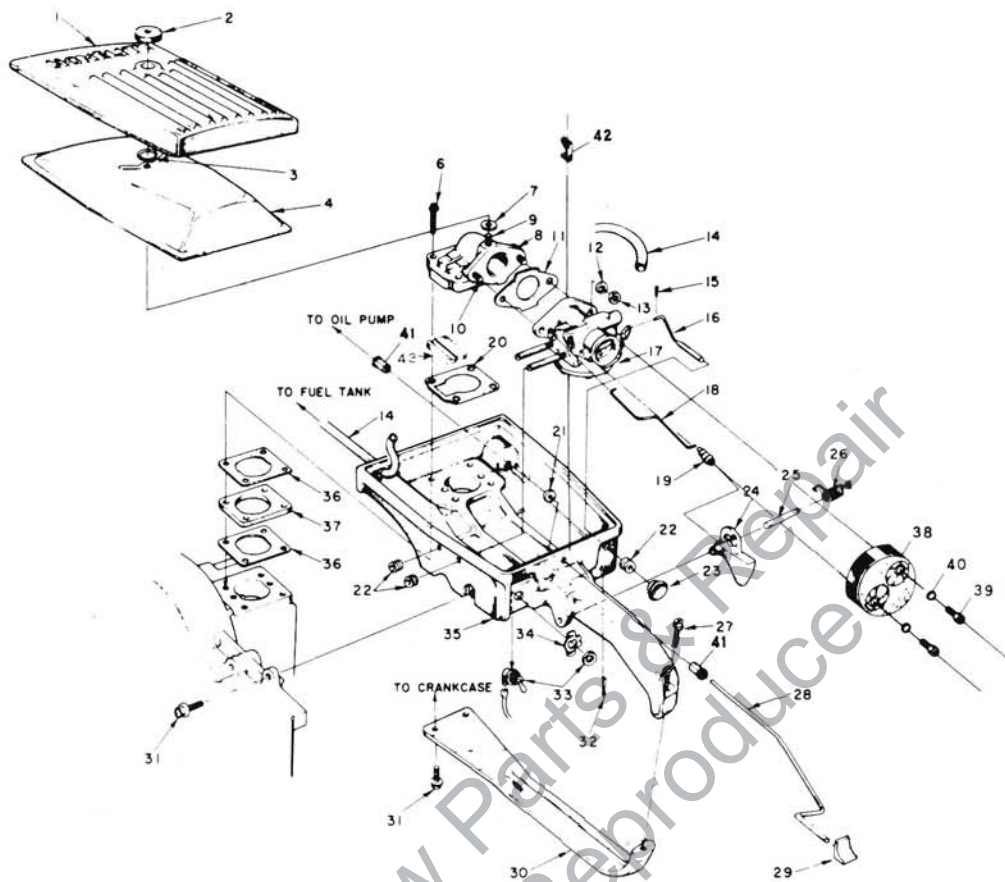
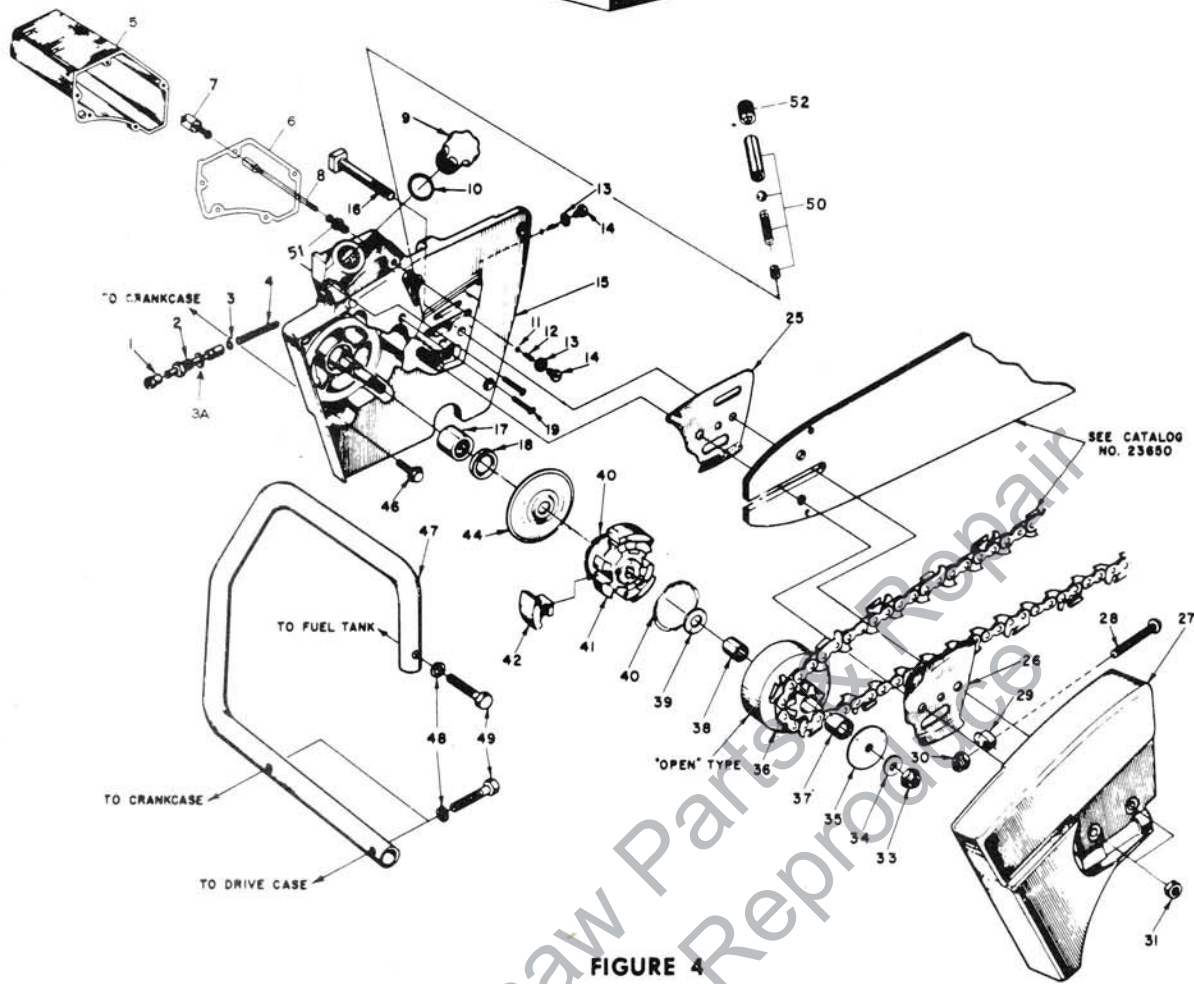


FIGURE 3

Index No.	Part No.	Description	No. Required	Index No.	Part No.	Description	No. Required
1	59230-4	COVER — air filter	1	20	58344	GASKET — reed valve	1
2	A-59229	NUT — cover	1	21	63290	WASHER — felt (pump rod)	1
3	111352	RING — retaining	1	22	58362	GROMMET	3
4	A-69306	ELEMENT — air filter	1	23	57289-1	BUTTON — choke rod	1
6	80868	SCREW — hex hd., 12-24 x 1 1/2	4	24	58181-A	TRIGGER — throttle	1
7	58392	GASKET — mounting stud	1	25	58353	SHAFT — throttle trigger	1
8	A-59490-T	VALVE — reed (elbow) Includes	1	26	58352-A	SPRING — throttle trigger	1
9	120770	STUD — cover mounting	1	27	80864	SCREW — hex hd., 12-24 x 1	1
10	27464	STUD — carburetor mounting	2	28	58356-B	ROD — oil pump	1
11	55553-3	GASKET — carburetor	1	29	58357	BUTTON — rod (oil pump)	1
12	83009	WASHER — lock, 1/4	2	30	58185-3	BRACE — throttle handle	1
13	81013	NUT — hex, 1/4-20	2	31	80867	SCREW — hex hd., 12-24 x 3/4	3
14	55680	LINE — fuel	1	32	86301	COTTER PIN — 1/16 x 1/2	1
15	86324	COTTER PIN — 1/16 x 1/2	1	33	A-57650-3	SWITCH — toggle w/nut	1
16	A-58354	ROD — choke	1	34	72085-A	PLATE — indicating (ON-OFF)	1
17	A-59427-A	CARBURETOR ASSEMBLY	1	35	A-63665-T	THROTTLE HANDLE — Include item 41, 42	1
	68662	REPAIR KIT — carburetor	1	36	58343	GASKET — spacer	2
	58534	GASKET SET — carburetor	1	37	58391	SPACER	1
18	59338-A	ROD — throttle	1	38	B-31114	Spit Back Shield	1
19	58348	BOOT — throttle rod	1	39	80030	SCREW — fl. hd., 10-32 x 3/8	2
				40	83006-1	WASHER — lock #10	2
				41	58929	BUSHING — nylon	2
				42	58930	STOP — oil pump rod	1
				43	58933	BLOCK — filler	1

\*AVAILABLE ON REQUEST

# HOMELITE C 51 CHAIN SAW



**FIGURE 4**

Index No.	Part No.	Description	No. Required
1	58337-A	CONNECTOR — oil pump	1
2	A-57834-10	PLUNGER — oil pump	1
		Includes	
		"O" RING	1
3A	59074	"O" RING	1
4	59293	SPRING — plunger	1
5	A-58341-A	RESERVOIR, oil	1
		Includes	
		GASKET	1
		COTTER PIN (not shown)	1
		SCREW, fil. hd., # 8, 32 x 3/4	5
		(item 19)	
7	A-58828	FILTER — oil	1
8	58340-B	LINE — oil filter	1
9	A-64454	CAP — oil filter	1
		Includes	
		GASKET	1
10	56607	GASKET	1
11	25527	BALL — check	1
12	55288-A	SPRING — check valve	1
13	65144	GASKET — Cap	2
14	65143-T	CAP — check valve	2
15	A-59493-CT	DRIVE CASE	1
		Includes items 50, 51, 52 and	
16	58334	BOLT — guide bar	2
17	63043	BEARING — needle	1
18	56256-B	SEAL garlock	1
19	82156	SCREW — fil. hd., # 8 x 3/4	5
25	56871-A	PLATE — guide bar (inner)	1
26	56872-B	PLATE — guide bar (outer)	1
27	A-58378	COVER — drive case	1

Index No.	Part No.	Description	No. Required
		Includes	
28	82219	SCREW — rd. hd., 5/16-18 x 2 1/8	1
29	55613-1	PIN — adjusting	1
30	81123	NUT — hex lock, 5/16-18	1
31	81089-2	NUT — hex, 3/8-16	2
33	81192	NUT — hex, 3/8-24	1
34	84010	WASHER — flat, 3/8	1
35	55163-1	WASHER — thrust	1
36	*A-57344-T	SPROCKET AND DRUM — 7 tooth .404 pitch (open type)	1
		Includes	
		BEARING — needle	1
37	55664	BEARING — needle	1
38	55661	RACE — inner	1
39	55660-1	WASHER — thrust	1
40	55123-C	SPRING — clutch	2
41	58546-1	SPIDER — clutch	1
42	55076-3	SHOE — clutch	3
44	56101-A	COVER — clutch	1
46	80867	SCREW — hex hd., # 12-24 x 3/4	5
47	A-58379-4T	HANDLE BAR — flush cut	1
48	83003	WASHER — lock, 5/16	3
49	80087	SCREW — hex hd., 5/16-18 x 1 1/2	3
50	B-31136	OUTLET — valve assy.	1
51	A-11246	SEAT — inlet oiler	1
52	80742	PLUG — allen screw, 1/4-28 N.F. x 1/4	1

\*Check type and number of teeth on sprocket before ordering.

*Always furnish saw model and serial number when ordering parts.*

# CARBURETOR PARTS

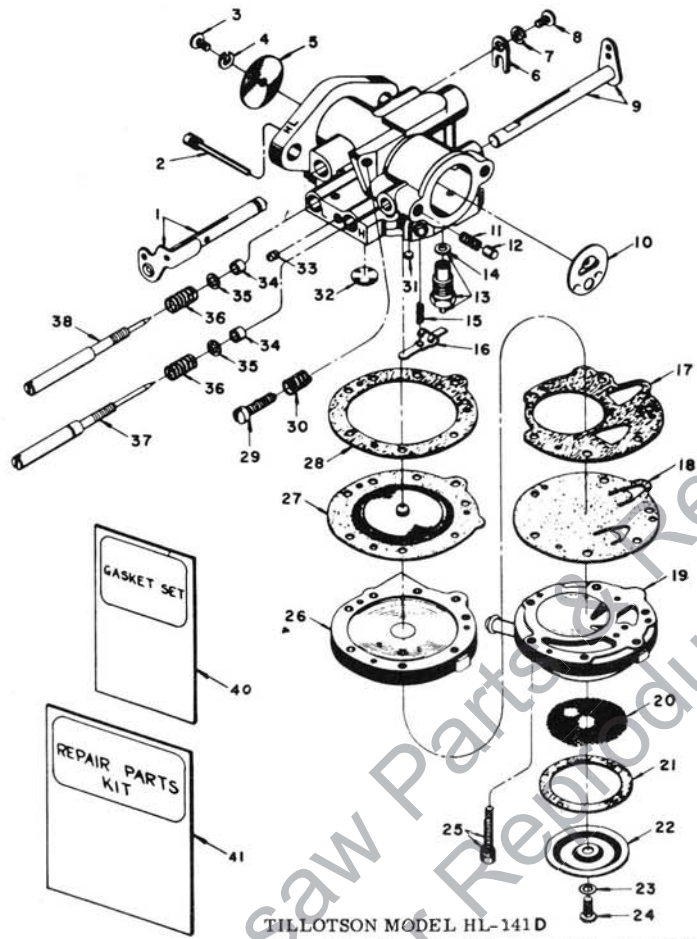
Homelite Chain Saw

Assembly Number

A-59427-A

Service Replacement

for A-58360, A-5836



TILLOTSON MODEL HL-141D  
(Supersedes HL-141, HL-141A, HL-141B, HL-141C)

Index No.	Part No.	Description	No. Required	Index No.	Part No.	Description	No. Required
1	A-58531	THROTTLE SHAFT & LEVER.....	1	21	55751	GASKET - strainer.....	1
2	*A-55762	PIN - fulcrum.....	1	22	58526	COVER - strainer.....	1
3	*80591	SCREW - rd. hd., 4 - 40 x 1/4".....	1	23	28098	GASKET - cover screw.....	1
4	*83008	WASHER - lock, #4.....	1	24	*58525	SCREW - cover retaining.....	1
5	75532	SHUTTER - throttle.....	1	25	55316	SCREW - fil. hd., 6-32 x 13/16"....	6
6	73086	CLIP - throttle shaft.....	1			w/lock washer	
7	83000	WASHER - lock, #8.....	1	26	A-58533	COVER - diaphragm.....	1
8	73088	SCREW - flat hd., 8-32 x 5/16".....	1	27	*57829	DIAPHRAGM - main.....	1
9	A-58532	CHOKE SHAFT & LEVER.....	1	28	57824	GASKET - diaphragm cover.....	1
10	77427	SHUTTER - choke.....	1	29	*71509 ††	SCREW - idle stop, see Note.....	1
11	73264	SPRING - choke friction.....	1	30	*28064 ††	SPRING - idle stop screw, see Note	1
12	71494	PLUNGER.....	1	31	*55763	PLUG - cup.....	1
13	*57728	INLET NEEDLE & SEAT.....	1	32	*30818	PLUG - welch.....	1
		Includes		33	73067	SCREW PLUG - drain.....	1
14	55344	GASKET.....	1	34	75733	PACKING - adjusting needle.....	2
15	*55759	SPRING - tension.....	1	35	75735	WASHER - adjusting needle.....	2
16	*55747	LEVER - inlet control.....	1	36	*73075	SPRING - adjusting needle.....	2
17	58529	GASKET - fuel pump.....	1	37	*58536	NEEDLE - main adjusting.....	1
18	*57729	DIAPHRAGM - fuel pump.....	1	38	*58680	NEEDLE - idle adjusting.....	1
19	59265 †	BODY - fuel pump (HL-141C, -141D)	1	40	68657	GASKET SET.....	1
	58530 †	BODY - (HL-141, -141A, -141B)	1	41	68662	REPAIR PARTS KIT.....	1
20	*58527	SCREEN - strainer.....	1				

\*Included in REPAIR PARTS KIT

† Fuel pump body not interchangeable, check carburetor model.

†† Service replacement carburetor #A-59427-A supplied with idle stop screw (#29) and spring (#30) which must be removed when an external idle adjustment is used. When old fuel line fitting is on choke lever side adapt fuel line to new outlet location by cutting approximately 2 1/2" from end so that line is not restricted.

**TERRY INDUSTRIES**  
A DIVISION OF **Extron** CANADA LIMITED

180 Labrosse Ave., Pointe Claire, Que.

