

HOMELITE

Chain Saw



PARTS LIST

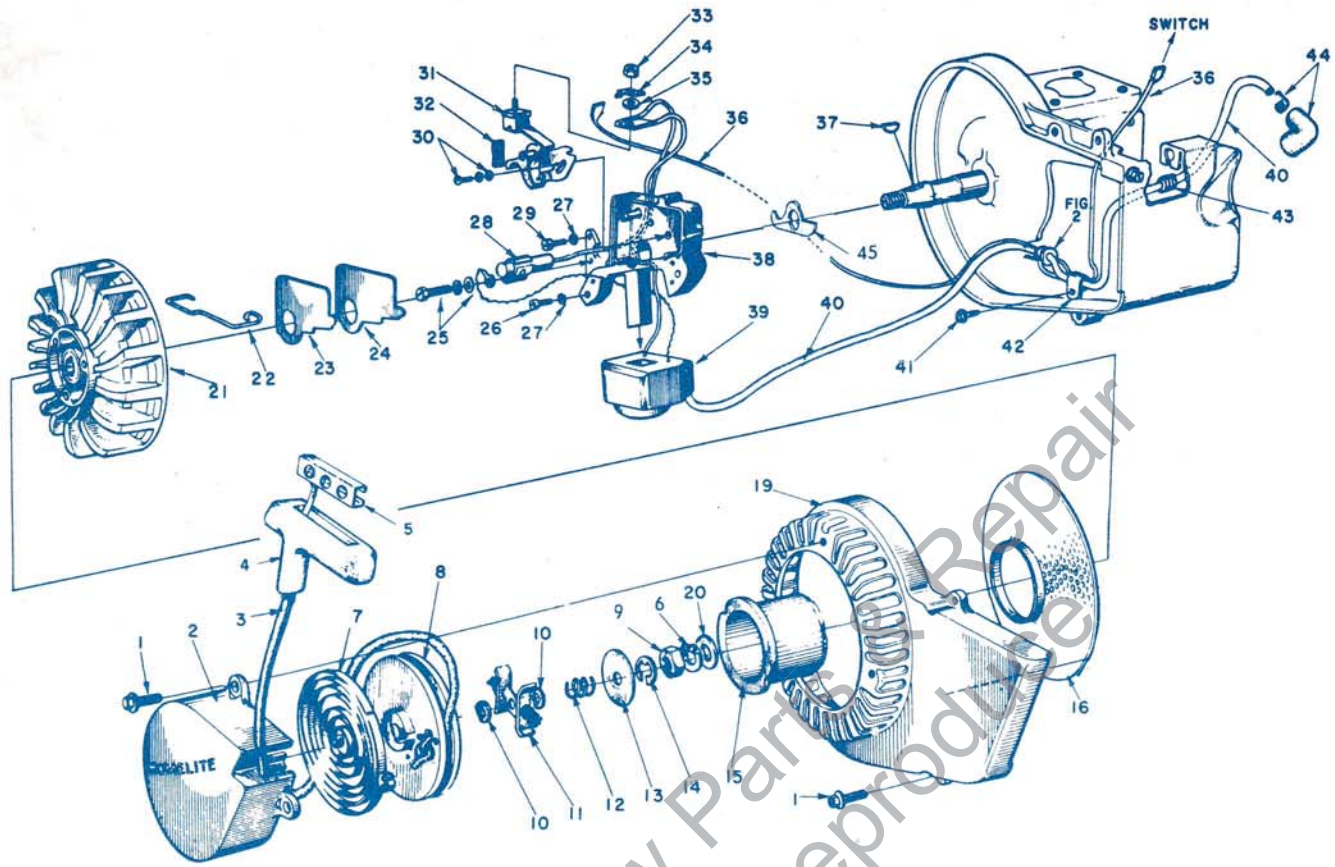


FIGURE 1

Index No.	Part No.	Description	No. Required	Index No.	Part No.	Description	No. Required
1	80867	SCREW — hex hd., #12-24 x 3/8	7	28	55987	CONDENSER — with terminal	1
2	A-58502	COVER — pulley w/2 roll pins	1	29	80595	SCREW — fl. hd., 10-24 x 1/2	1
3	55898	ROPE — starting	1	30	57749	SCREW GROUP — point fastening	1
4	58915	GRIP — starting	1	31	A-58165	BREAKER POINTS (set)	1
5	58847-T	INSERT — grip	1			Includes	
6	83019	WASHER — lock 7/16	1	32	55984	WICK — felt	1
7	56451-1	SPRING — rewind	1	33	55982	NUT — terminal	1
8	56452	PULLEY — starter	1	34	57733	TAB — ground	1
9	81110	NUT — hex 2/16 x 20	1	35	55983	WASHER — terminal	1
10	58970	WASHER — fibre	2	36	A-58321	LEAD — ground w/terminals	1
11	A-57647	FRICTION SHOE ASSEMBLY	1	37	75078	KEY — rotor	1
12	56455	SPRING — brake	1	38	57744	BOX — breaker, w/core	1
13	76436	WASHER — brake retainer	1	39	55986-A	COIL — with ground terminal	1
14	90618	RING — retaining	1	40	58382	LEAD — high tension	1
15	58920-T	CUP — starter	1	41	80869	SCREW — hex hd., 10-24 x 3/8	1
16	58294	SCREEN — rotary	1	42	56014	CLAMP — lead	1
19	59094-3	HOUSING — fan	1	43	60929	GROMMET	1
20	84055	WASHER — flat aluminum, 7/16	1	44	A-55373-A	TERMINAL — (sparky)	1
21	57568-B	ROTOR	1	45	56292-A	SEAL — breaker box	1
22	55980	CLAMP — dust cover	1				
23	55979	COVER — dust	1				
24	55978-2	GASKET — dust cover	1				
25	57750	SCREW GROUP — condenser fastening	1				
26	80660	SCREW — fl. hd., 10-24 x 7/8	2				
27	83046	WASHER — lock, #10	3				

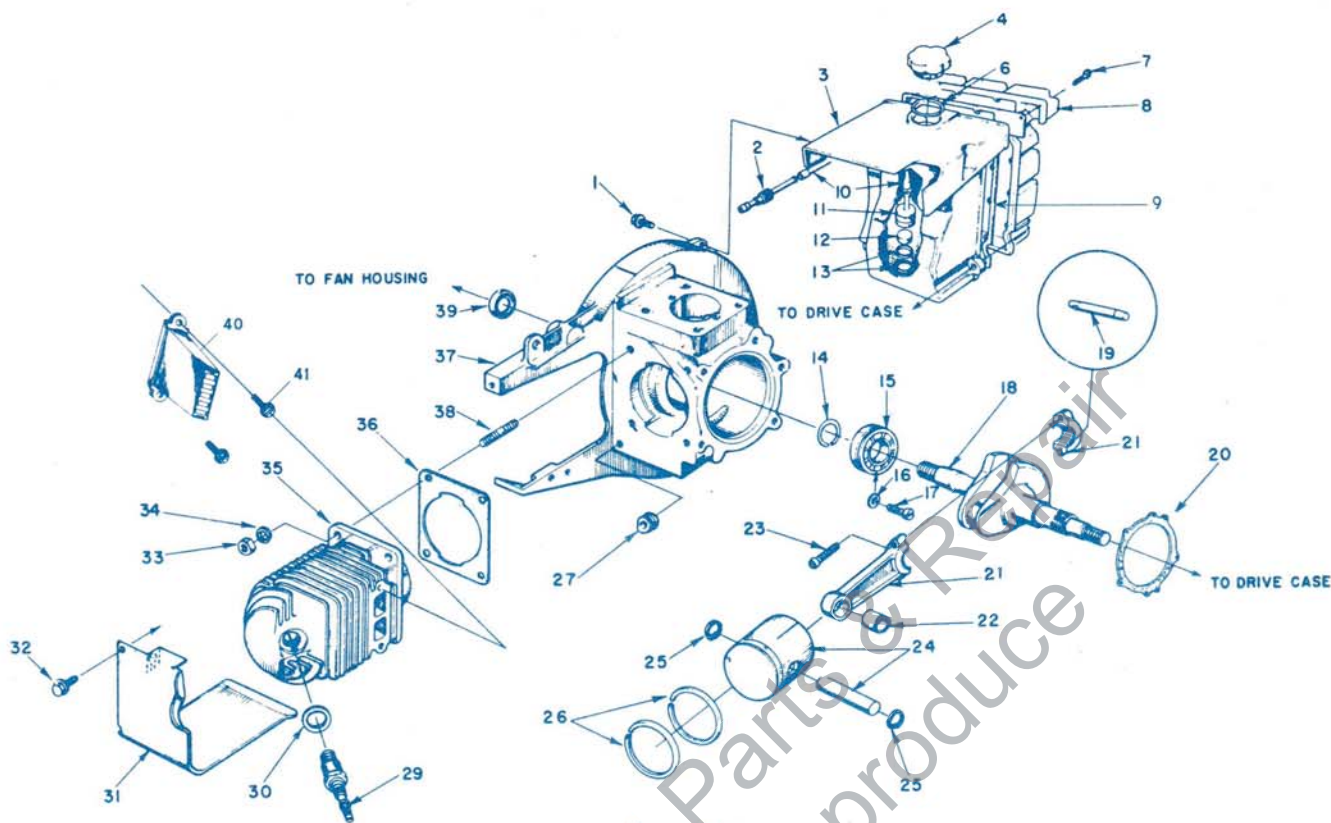


FIGURE 2

Index No.	Part No.	Description	No. Required	Index No.	Part No.	Description	No. Required
2	58364	FITTING — outlet (fuel line)	1	23	80805	SCREW — socket hd., 8-32 x 1/16	2
3	* 58172-5T	TANK — fuel	1	24	A-58328-T	PISTON AND PIN	1
4	A-64140-AT	CAP — vented fuel	1			Includes	
		Includes		25	55095	RING — pin retaining	2
6	58957	GASKET	1	26	55038	RING — piston	2
7	* 120543	SCREW — rd. hd., #8 x 1/2	5	27	58318	GROMMET — lead	1
8	* 58173-3T	COVER — fuel tank	1	29	40190-S	SPARK PLUG	1
9	* 58367	GASKET	1			Includes	
10	55805	SLEEVE — flexible	1	30	25038	GASKET	1
11	A59251	FILTER — assy.	1	31	A-59919-3	CYLINDER SHIELD	1
		Includes		32	80869	SCREW — hex hd., 10-24 x 3/4	2
12	59253	FILTER	1	33	81065-2	NUT — hex, 1/4-28	4
14	58319-A	RING — retaining	1	34	83009	WASHER — lock, 1/4	4
15	58190-S	BEARING — ball	1	35	58174-2T	CYLINDER	1
16	83061	WASHER — lock	2	36	58292	GASKET — cylinder	1
17	19238-3	SCREW — bearing retaining	2	37	A-58317-T	CRANKCASE	1
18	58189-B	CRANK SHAFT	1			Includes	
19	AA-55280	ROLLERS — set of 27	1	38	55871	STUD	4
20	63356	GASKET	1	39	58308A	SEAL — garlock	1
21	A59483-1	CONNECTING ROD	1	40	58184-1	Muffler	1
		Includes		41	80867	Screw Hex HD 12-24 x 3/4	2
22	59351	BEARING — needle	1				

* Supplied as a Tank Assembly A58366-1T

SPECIAL TOOLS

Part No.	Description	Part No.	Description
AA-22560	MAGNETO ROTOR REMOVER ASSEMBLY	23139	ASSEMBLY TOOL — clutch drum bearing
C-50957	WRENCH Spider Remover	23876	ASSEMBLY TOOL — needle bearing
23136	FIXTURE — body assembling	23671	ASSEMBLY TOOL — drive case seal
23693	SLEEVE (for garlock seal)	22828	PLIERS — for Tru-arc ring (piston)
22820-2	ADAPTER — bearing assembling	A-23809	NEEDLE BEARING TOOL (conn. rod)
A-23672	JACKSCREW ASSEMBLY	23528	WRENCH — socket screw (conn. rod)
23670	PLATE — shaft aligning	23318	SPRAY CAN — blue paint
23233-1	PLUG — seal assembling		

A-22808

COMBINATION WRENCH

Always furnish saw model and serial number when ordering parts.

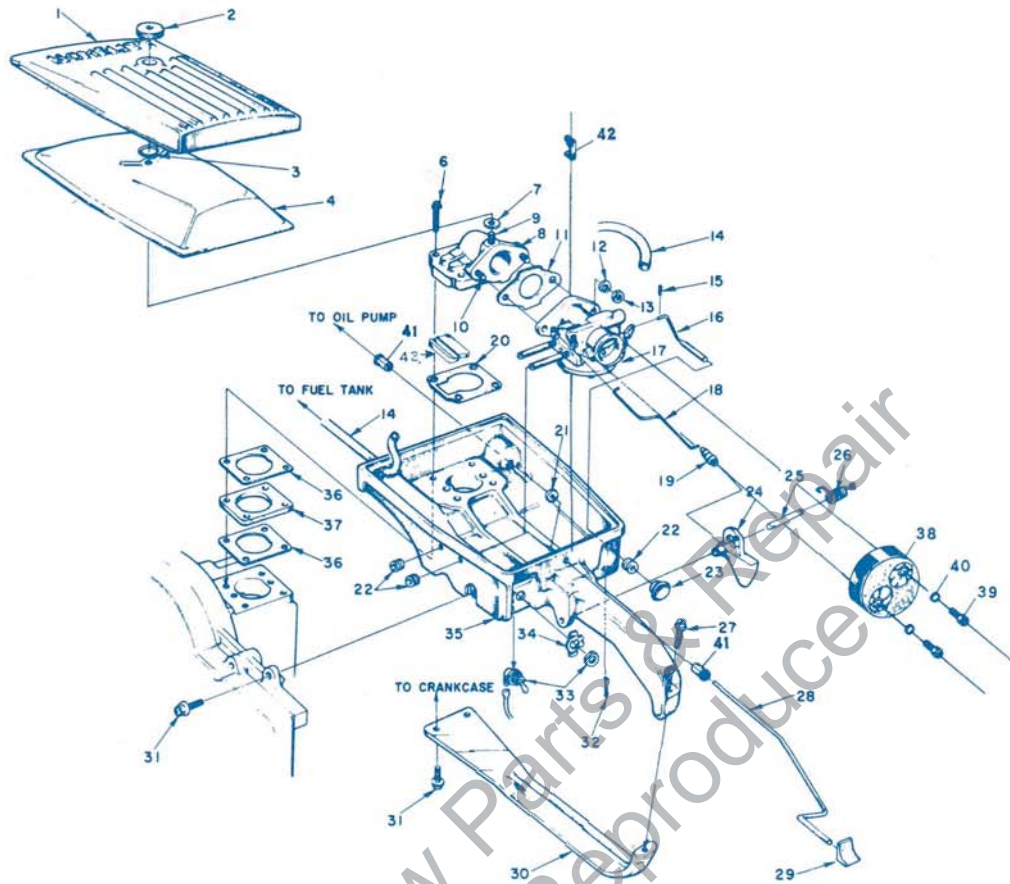


FIGURE 3

Index No.	Part No.	Description	No. Required	Index No.	Part No.	Description	No. Required
1	A-59492	COVER — air filter	1	20	58344	GASKET — reed valve	1
		Includes		21	63290	WASHER — felt (pump rod)	1
2	A-59229	NUT — cover	1	22	58362	GROMMET	3
3	111352	RING — retaining	1	23	57289-1	BUTTON — choke rod	1
4	63728	ELEMENT — air filter	1	24	58181-A	TRIGGER — throttle	1
6	80868	SCREW — hex hd., 12-24 x 1 1/2	4	25	58353	SHAFT — throttle trigger	1
7	58392	GASKET — mounting stud	1	26	58352-A	SPRING — throttle trigger	1
8	A-59490-T	VALVE — reed (elbow)	1	27	80864	SCREW — hex hd., 12-24 x 1	1
		Includes		28	58356-B	ROD — oil pump	1
9	120770	STUD — cover mounting	1	29	58357	BUTTON — rod (oil pump)	1
10	27464	STUD — carburetor mounting	2	30	58185-3	BRACE — throttle handle	1
11	55553-3	GASKET — carburetor	1	31	80867	SCREW — hex hd., 12-24 x 3/4	3
12	83009	WASHER — lock, 1/4	2	32	86301	COTTER PIN — 1/16 x 1/2	1
13	81013	NUT — hex, 1/4-20	2	33	A-57650-3	SWITCH — toggle w/nut	1
14	55680	LINE — fuel	1	34	72085-A	PLATE — indicating (ON-OFF)	1
15	86324	COTTER PIN — 1/32 x 1/2	1	35	58179-6	THROTTLE HANDLE — carburetor and filter housing	1
16	A-58354	ROD — choke	1				
17	A-59427-A	CARBURETOR ASSEMBLY	1	36	58343	GASKET — spacer	2
	58535	REPAIR KIT — carburetor (includes Gasket Set)	1	37	58391	SPACER	1
	58534	GASKET SET — carburetor	1	*38	B-31114	Spit Back Shield	1
18	59338	ROD — throttle	1	*39	80030	SCREW — fil. hd. 10-32 x 3/8	2
19	58348	BOOT — throttle rod	1	*40	83006-1	WASHER — lock # 10	2
				41	58929	BUSHING — nylon	2
				42	58930	STOP — oil pump rod	1
				43	58933	BLOCK, filler	1

*AVAILABLE ON REQUEST

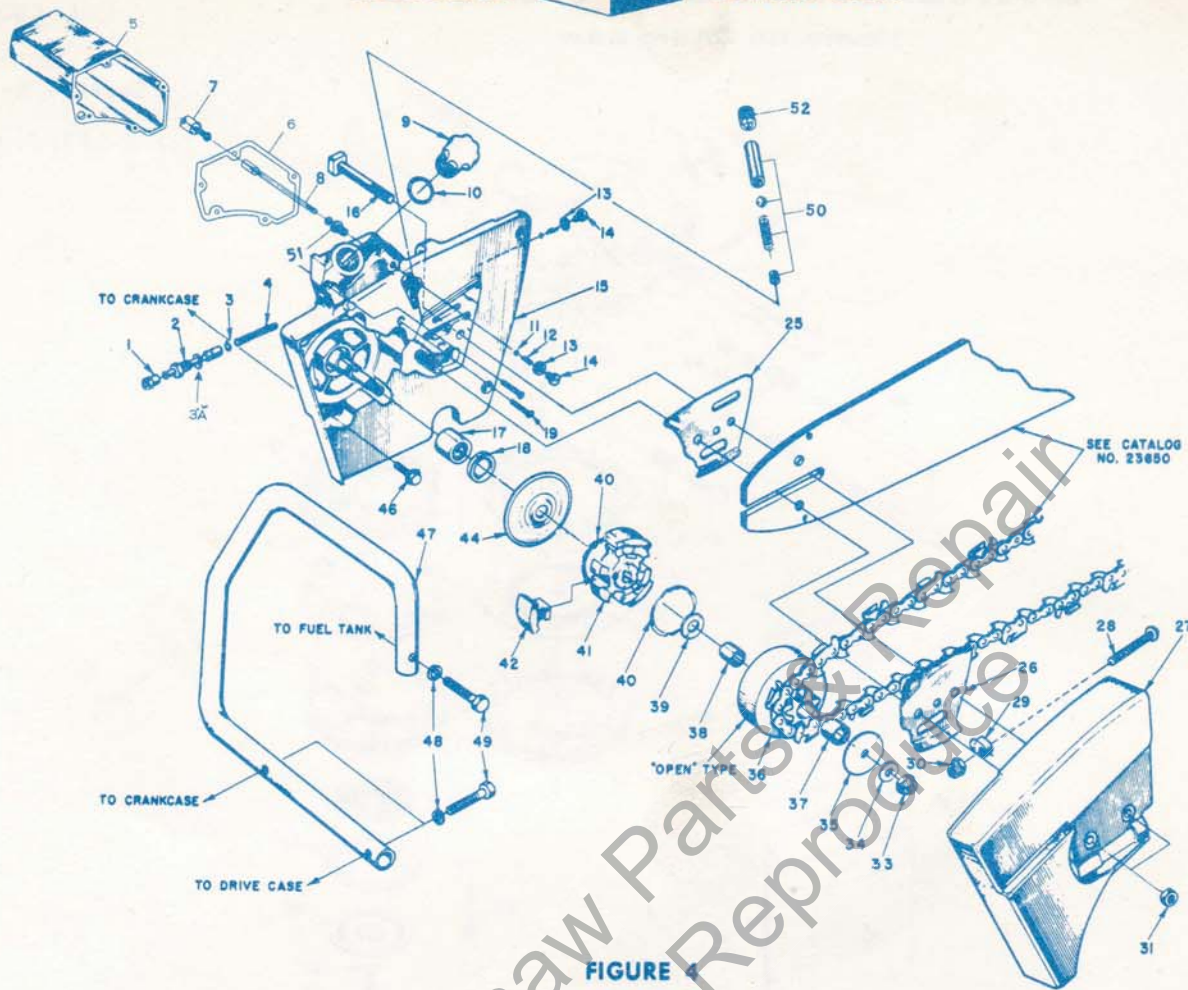


FIGURE 1

Index No.	Part No.	Description	No. Required
1	58337-A	CONNECTOR — oil pump	1
2	A-57834-10	PLUNGER — oil pump	1
		Includes	
3	74388	"O" RING	1
3A	59074	"O" RING	1
4	59293	SPRING — plunger	1
5	A-58341-A	RESERVOIR, oil	1
		Includes	
6	67122	GASKET	1
	86301	COTTER PIN (not shown)	1
	82156	SCREW, fil. hd., #8-32 x 3/4	5
		(item 19)	
7	A-58828	FILTER — oil	1
8	58340-B	LINE — oil filter	1
9	A-64454	CAP — oil filter	1
		Includes	
10	56607	GASKET	1
11	25527	BALL — check	1
12	55288-A	SPRING — check valve	1
13	58338	GASKET — Cap	2
14	58339	CAP — check valve	2
15	59493-CT	DRIVE CASE	1
		Includes items 50, 51, 52 and	
16	58334	BOLT — guide bar	2
17	63043	BEARING — needle	1
18	56256-B	SEAL garlock	1
19	82156	SCREW — fil. hd., # 8 x 3/4	5
25	56871-A	PLATE — guide bar (inner)	1
26	56872-B	PLATE — guide bar (outer)	1
27	A-58378	COVER — drive case	1

Index No.	Part No.	Description	No. Required
28	80617	SCREW — rd. hd., 5/16-18 x 2	1
29	55613-1	PIN — adjusting	1
30	81123	NUT — hex lock, 5/16-18	1
31	81089-2	NUT — hex, 3/8-16	2
33	81192	NUT — hex, 3/8-24	1
34	84010	WASHER — flat, 3/8	1
35	55163-1	WASHER — thrust	1
36	*A-57344	SPROCKET AND DRUM — 7 tooth .404 pitch (open type)	1
		Includes	
37	55664	BEARING — needle	1
38	55661	RACE — inner	1
39	55660-1	WASHER — thrust	1
40	55123-C	SPRING — clutch	2
41	58546-1	SPIDER — clutch	1
42	55076-3	SHOE — clutch	3
44	56101-A	COVER — clutch	1
46	80867	SCREW — hex hd., # 12-24 x 3/4	5
47	A-58379-4T	HANDLE BAR — flush cut	1
48	83003	WASHER — lock, 5/16	3
49	80087	SCREW — hex hd., 5/16-18 x 1 1/2	3
50	B-31136	OUTLET — valve assy.	1
51	A-11246	SEAT — inlet oiler	1
52	80742	PLUG — allen screw, 1/4-28 N.F. x 1/4	1

*Check type and number of teeth on sprocket before ordering.

Always furnish saw model and serial number when ordering parts.

CARBURETOR PARTS

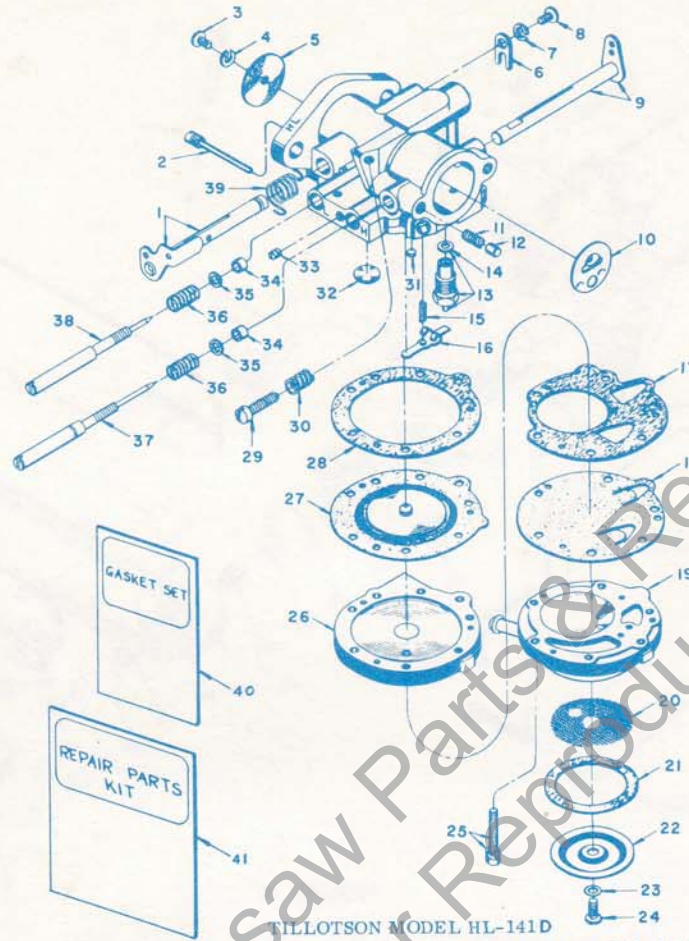
Homelite Chain Saw

Assembly Number

A-59427-A

Service Replacement

for A-58360, A-58360-A



TILLOTSON MODEL HL-141D
(Supersedes HL-141, HL-141A, HL-141B, HL-141C)

Index No.	Part No.	Description	No. Required
1	A-58531	THROTTLE SHAFT & LEVER.....	1
2	*A-55762	PIN - fulcrum.....	1
3	*80591	SCREW - rd. hd., 4 - 40 x 1/4".....	1
4	*83008	WASHER - lock, #4.....	1
5	75532	SHUTTER - throttle.....	1
6	73086	CLIP - throttle shaft.....	1
7	83000	WASHER - lock, #8.....	1
8	73088	SCREW - flat hd., 6-32 x 5/16".....	1
9	A-58532	CHOKE SHAFT & LEVER.....	1
10	77427	SHUTTER - choke.....	1
11	73264	SPRING - choke friction.....	1
12	71494	PLUNGER.....	1
13	*57728	INLET NEEDLE & SEAT.....	1
		Includes	
14	55344	GASKET.....	1
15	*55759	SPRING - tension.....	1
16	*55747	LEVER - inlet control.....	1
17	58529	GASKET - fuel pump.....	1
18	*57729	DIAPHRAGM - fuel pump.....	1
19	59265 †	BODY - fuel pump (HL-141C, -141D)	1
	58530 †	BODY - (HL-141, -141A, -141B)	1
20	*58527	SCREEN - strainer.....	1

Index No.	Part No.	Description	No. Required
21	55751	GASKET - strainer.....	1
22	58526	COVER - strainer.....	1
23	28098	GASKET - cover screw.....	1
24	*58525	SCREW - cover retaining.....	1
25	55316	SCREW - fil. hd., 6-32 x 13/16"....	6
		w/lock washer	
26	A-58533	COVER - diaphragm.....	1
27	*57829	DIAPHRAGM - main.....	1
28	57824	GASKET - diaphragm cover.....	1
29	*71509 ††	SCREW - idle stop, see Note.....	1
30	*28064 ††	SPRING - idle stop screw, see Note	1
31	*55763	PLUG - cup.....	1
32	*30818	PLUG - welch.....	1
33	73067	SCREW PLUG - drain.....	1
34	75733	PACKING - adjusting needle.....	2
35	75735	WASHER - adjusting needle.....	2
36	*73075	SPRING - adjusting needle.....	2
37	*58536	NEEDLE - main adjusting.....	1
38	*58680	NEEDLE - idle adjusting.....	1
39	59268	SPRING - throttle return (HL-141C, -D)	1
40	*58534	GASKET SET.....	1
41	58681	REPAIR PARTS KIT.....	1

*Included in REPAIR PARTS KIT

† Fuel pump body not interchangeable, check carburetor model.

†† Service replacement carburetor #A-59427-A supplied with idle stop screw (#29) and spring (#30) which must be removed when an external idle adjustment is used. When old fuel line fitting is on choke lever side adapt fuel line to new outlet location by cutting approximately 2 1/2" from end so that line is not restricted.

