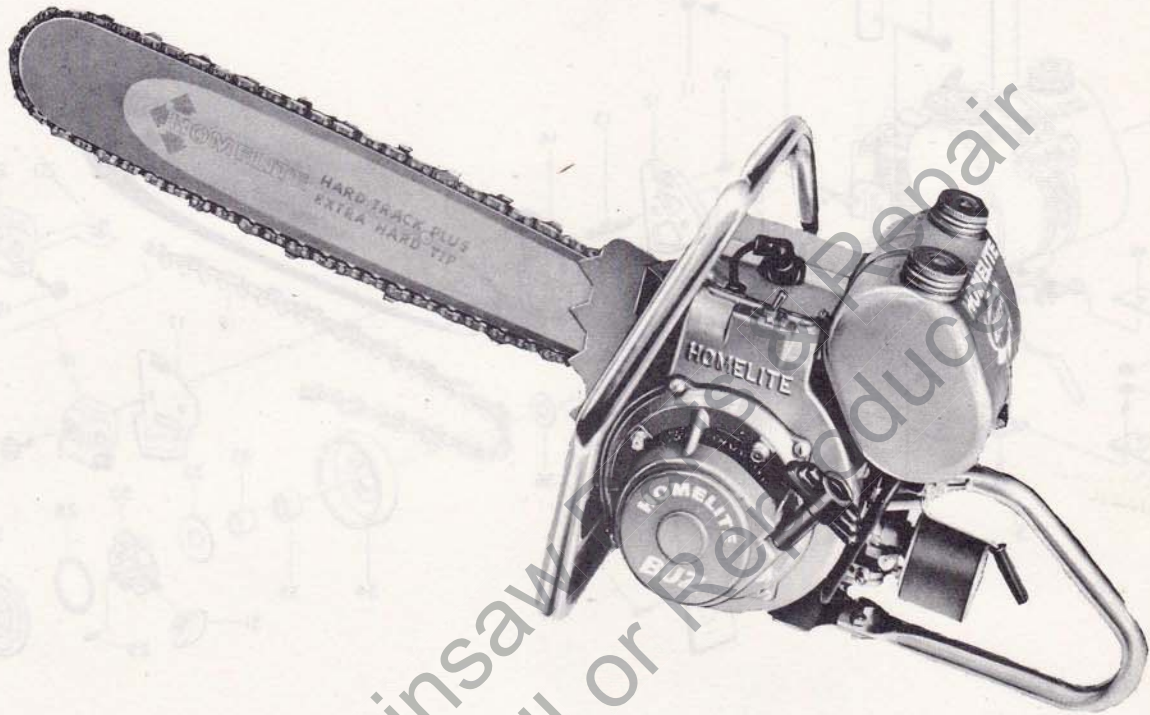


PARTS LIST

old



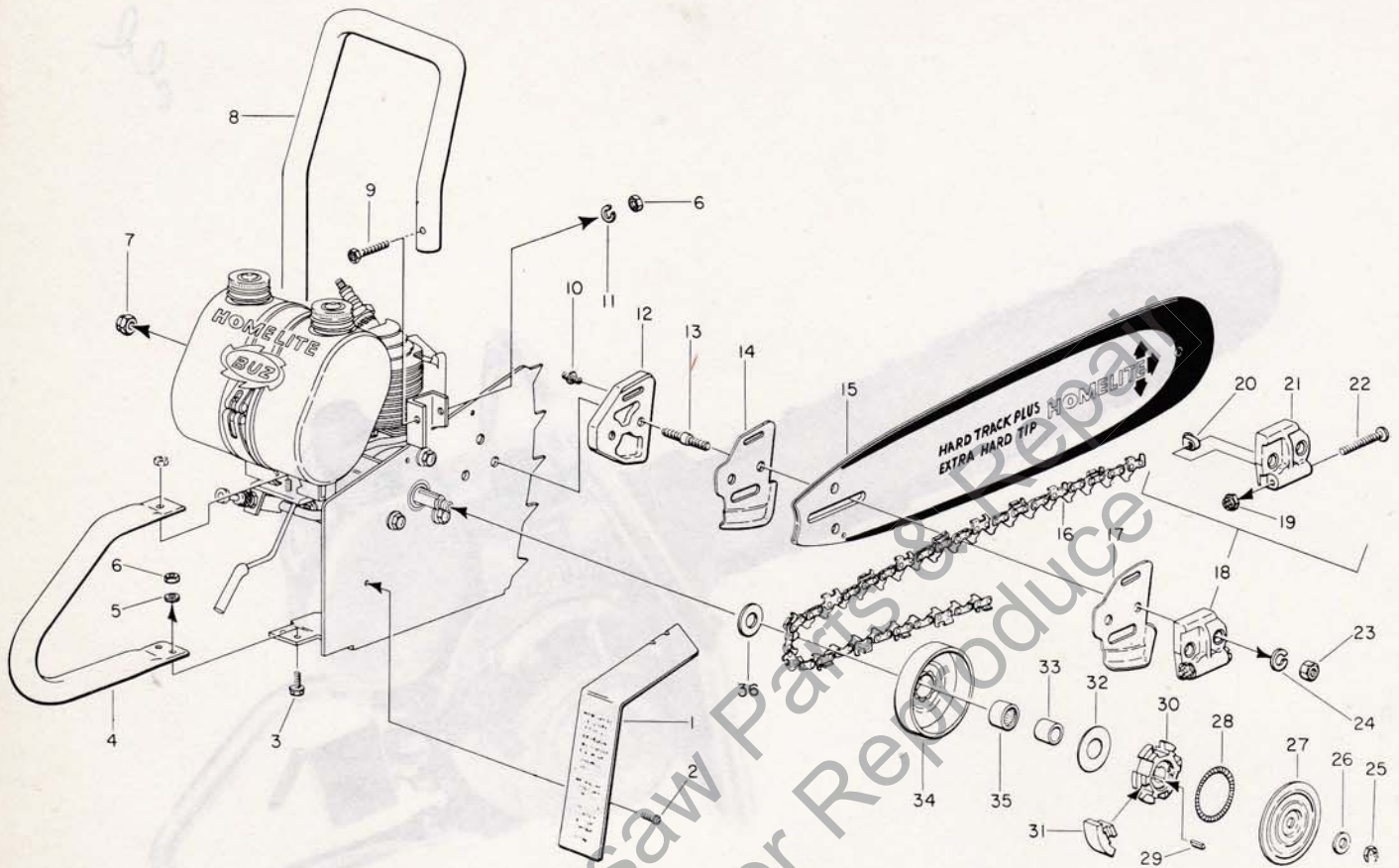
HOMELITE



CHAIN SAW

Leon's Chainsaw Repair
Do Not Sell or Reproduce

SAW PARTS



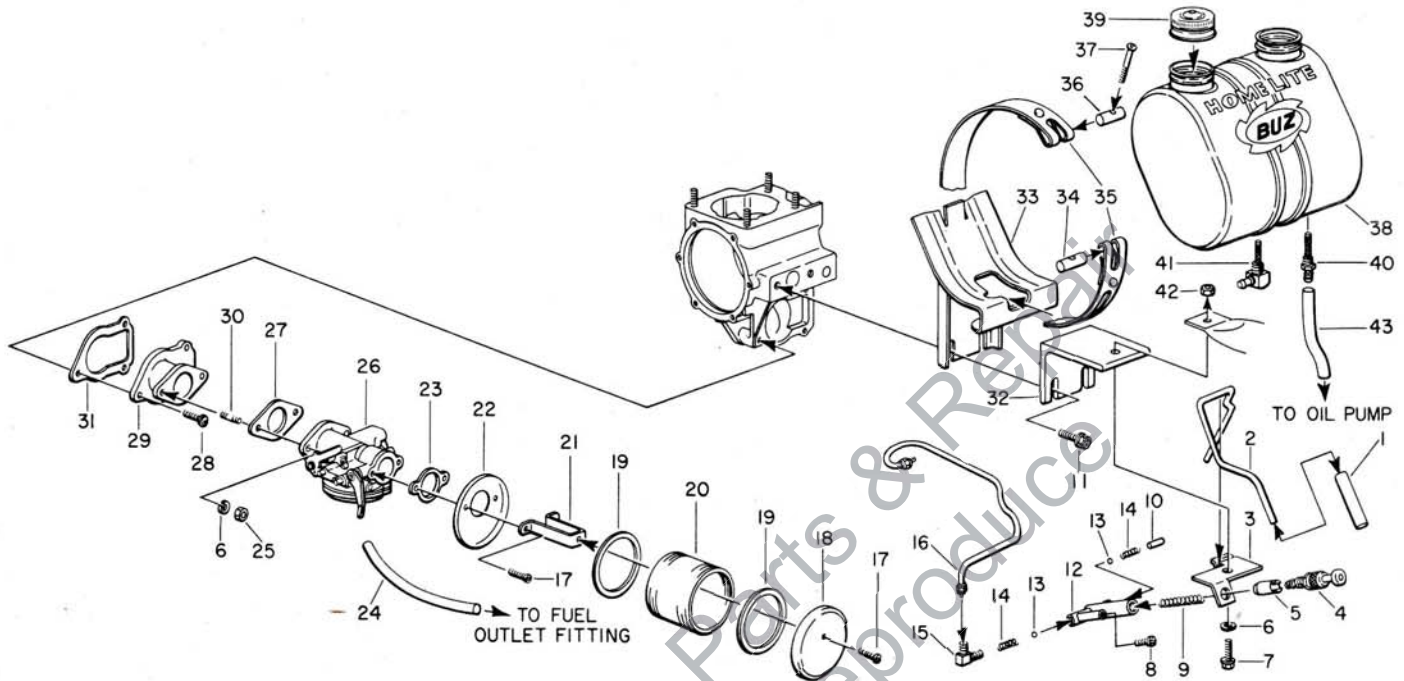
Index No.	Part No.	Nomenclature	No. Required	Index No.	Part No.	Nomenclature	No. Required
1	56748	CHAIN GUARD	1	17	55667	SHIM—guide bar (outer)	1
	56766	DECAL—starting instructions	1	18	A-55591-2	ADJUSTING PLATE ASSEMBLY	1
2	80579	SCREW—pan hd., 10-32 x 3/8"	2			Composed of:	
3	80355	SCREW—hex hd., 1/4-20 x 1/2"	2	19	81123	NUT—lock, hex	1
4	56743	PISTOL GRIP	1	20	55552	PIN—guide bar adjusting	1
5	84004	WASHER—flat, 1/4"	2	21	†	PLATE	1
6	81013	NUT—hex, 1/4-20	4	22	80617	SCREW—rd. hd., 3/16-18 x 2"	1
7	81137	NUT—Flexloc, 3/8-16	2	23	81089	NUT—hex, 3/8-16	2
8	A-56749	HANDLE BAR	1	24	83018	WASHER—lock, 3/8"	2
9	80447	SCREW—hex hd., 1/4-20 x 1 3/8"	2	25	81116	NUT—Flexloc, 3/8-24	1
10	31733-1	ADAPTER—oil line	1	26	55036	WASHER—clutch retaining	1
11	83009	WASHER—lock, 1/4"	2	27	56238	COVER—clutch	1
12	56701	PAD—guide bar	1	28	55123-A	SPRING—clutch	2
13	55606	STUD	2	29	55225-1	KEY	2
14	55666	SHIM—guide bar (inner)	1	30	55075-3	SPIDER—clutch	1
15	A-51545	12" HOMELITE BAR	1	31	55076-1	SHOE—clutch	3
	A-51517	17" HOMELITE BAR	1	32	56132	WASHER—thrust (outer)	1
	A-51521	21" HOMELITE BAR	1	33	56231	RACE—inner	1
16	A-51542	12" OREGON No. 62C-3/16" pitch chipper chain	1	34	A-56299	SPROCKET AND DRUM ASSEMBLY	1
	A-51535	17" OREGON No. 62C-3/16" pitch chipper chain	1			Includes	
	A-51536	21" OREGON No. 62C-3/16" pitch chipper chain	1	35	56230	BEARING—needle	1
				36	56236	WASHER—thrust (inner)	1

† Not sold separately.

**HOMELITE
BUZ**

always give model and serial number of unit when ordering parts

FUEL SUPPLY

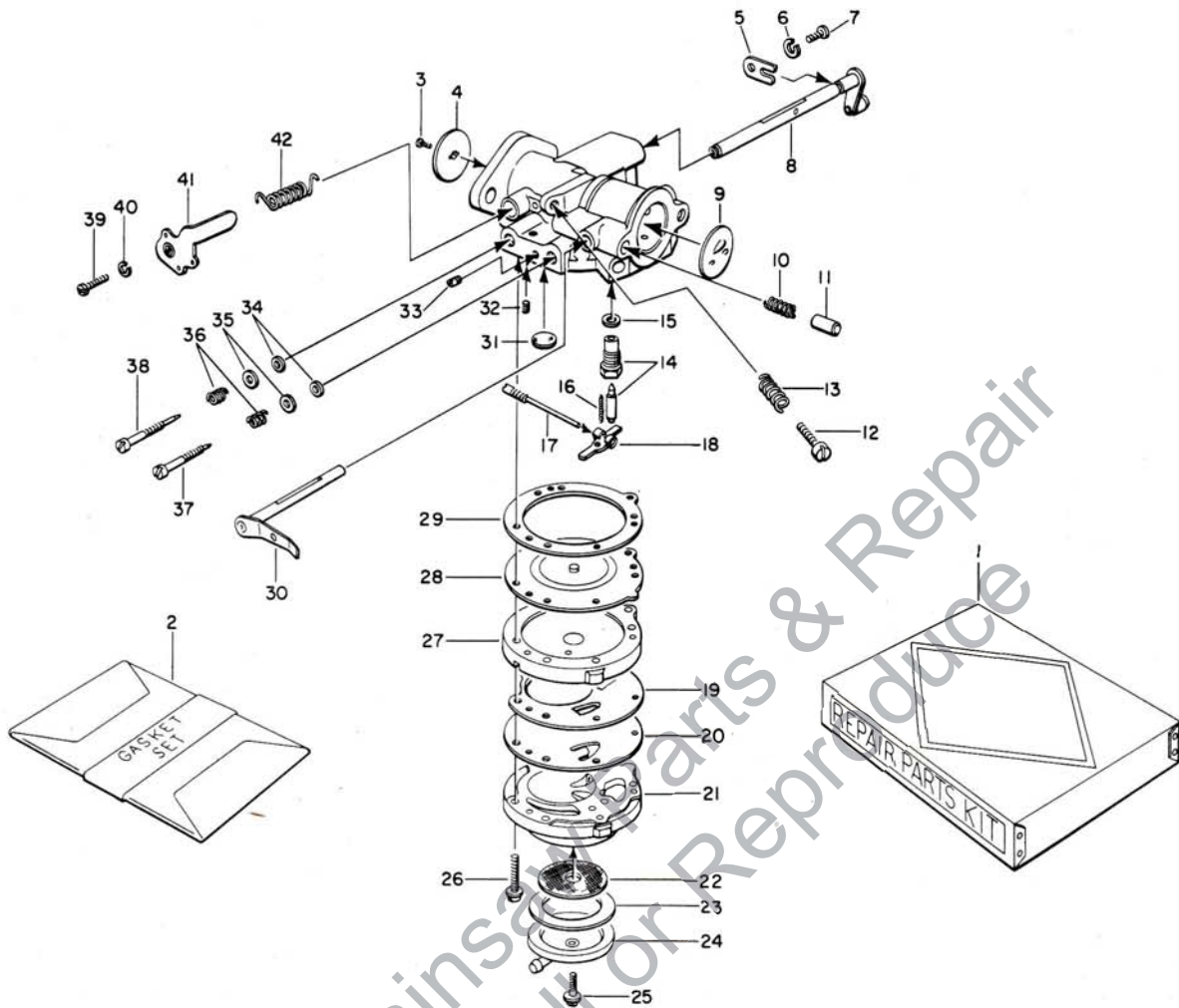


Index No.	Part No.	Nomenclature	No. Required	Index No.	Part No.	Nomenclature	No. Required
1	56737	SLEEVE—throttle	1	26		CARBURETOR ASSEMBLY (See page 4 for Tillotson and page 5 for Brown)	1
2	56736	THROTTLE TRIGGER	1	27	55553	GASKET—carburetor	1
3	56742	BRACKET—oil pump	1	28	80583	SCREW—pan hd., No. 10-32 x 3/4"	3
4	71764	PLUNGER BUTTON ASSEMBLY	1	29	A-55679-A2	REED VALVE ADAPTER	1
5	A-74406	TUBE—plunger	1			Includes	
6	83009	WASHER—lock, 1/4"	3	30	27464	STUD	2
7	80218	SCREW—hex hd., 1/4-20 x 3/4"	3	31	55116	GASKET—reed valve adapter	1
8	71759	SCREW—plug	1	32	56738	BRACKET—angle	1
9	71762	SPRING	1	33	A-56728	SADDLE—fuel tank	1
10	56741	TUBE—inlet	1	34	56735	STUD—strap (threaded)	1
11	80581	SCREW—hex hd., 1/4-20 x 5/8"	2	35	A-56732	STRAP—fuel tank	1
12	71761	BODY—oil pump	1	36	56734	STUD—strap (plain)	1
13	25527	BALL	2	37	80249	SCREW—fil. hd., No. 10-32 x 1 1/4"	1
14	71760	SPRING	2	38	A-56773	FUEL TANK	1
15	56707	ELBOW	1			Includes	
16	A-56746	OIL LINE ASSEMBLY	1	39	56762	CAP	2
17	80579	SCREW—pan hd., 10-32 x 3/8"	3		56754	DECAL—"fuel mix"	1
18	56785	COVER—air filter (front)	1		56755	DECAL—"chain oil"	1
19	56793	GASKET—filter element	2		56752	DECAL—"Homelite"	1
20	56788	ELEMENT—air filter	1		56753	DECAL—"BUZ"	1
21	56787	BRACKET—air filter	1	40	56765	OIL OUTLET FITTING	1
22	56786	COVER—air filter (back)	1	41	56778	FUEL OUTLET FITTING	1
23	72971-1	GASKET—air filter	1	42	81013	NUT—hex, 1/4-20	1
24	76178	FUEL LINE (tank to carburetor)	1	43	56745	OIL LINE (tank to oil pump)	1
25	81013	NUT—hex, 1/4-20	3				

always give model and serial number of unit when ordering parts

**HOMELITE
BUZ**

CARBURETOR TILLOTSON MODEL HL-82A



Index No.	Part No.	Nomenclature	No. Required
1	77392	REPAIR PARTS KIT (RK-420)	1
2	**77342	GASKET SET (GS-145)	1
	A-56760	CARBURETOR—Tillotson Model HL-82A Composed of items 3 thru 42	1
3	**28049	SCREW—throttle shutter	1
4	75532	SHUTTER—throttle	1
5	73086	CLIP—throttle shaft	1
6	83000	WASHER—lock, No. 8	1
7	73088	SCREW—flat hd., 8-32 x 5/16"	1
8	A-56769	THROTTLE SHAFT	1
9	75734	SHUTTER—choke	1
10	73264	SPRING—choke friction	1
11	71494	PIN—choke friction	1
12	**71509	SCREW—idle stop	1
13	**28064	SPRING—idle stop screw	1
14	**A-55761	INLET NEEDLE and SEAT Includes	1
15	55344	GASKET—inlet seat	1
16	**55759	SPRING—control lever	1
17	A-55762	PIN—control lever	1
18	**55747	LEVER—control	1
19	55881	GASKET—pump diaphragm	1
20	*55753	DIAPHRAGM—pump	1

Index No.	Part No.	Nomenclature	No. Required
21	55748	COVER—fuel pump	1
22	55752	SCREEN—fuel inlet	1
23	*55751	GASKET—fuel inlet	1
24	55750	TURRET—fuel inlet	1
25	55756	SCREW—turret	1
26	55316	SCREW—body, w/lockwasher	6
27	55749	COVER—main diaphragm	1
28	*A-55760	DIAPHRAGM—main	1
29	*55754	GASKET—main diaphragm	1
30	A-77400	CHOKE SHAFT AND LEVER	1
31	30818	PLUG—welch (idle channel)	1
32	55763	PLUG—main channel	1
33	73067	PLUG—drain	1
34	*75733	PACKING—adjustment screw	2
35	75735	WASHER—adjustment screw	2
36	73075	SPRING—adjustment screw	2
37	**75736	SCREW—idle mixture adjustment	1
38	**75739	SCREW—main mixture adjustment	1
39	**71521	SCREW—rd. hd., 4-36 x 1/4"	1
40	**71522	WASHER—lock, No. 4	1
41	77247-1	LEVER—throttle stop	1
42	75731	SPRING—throttle return	1

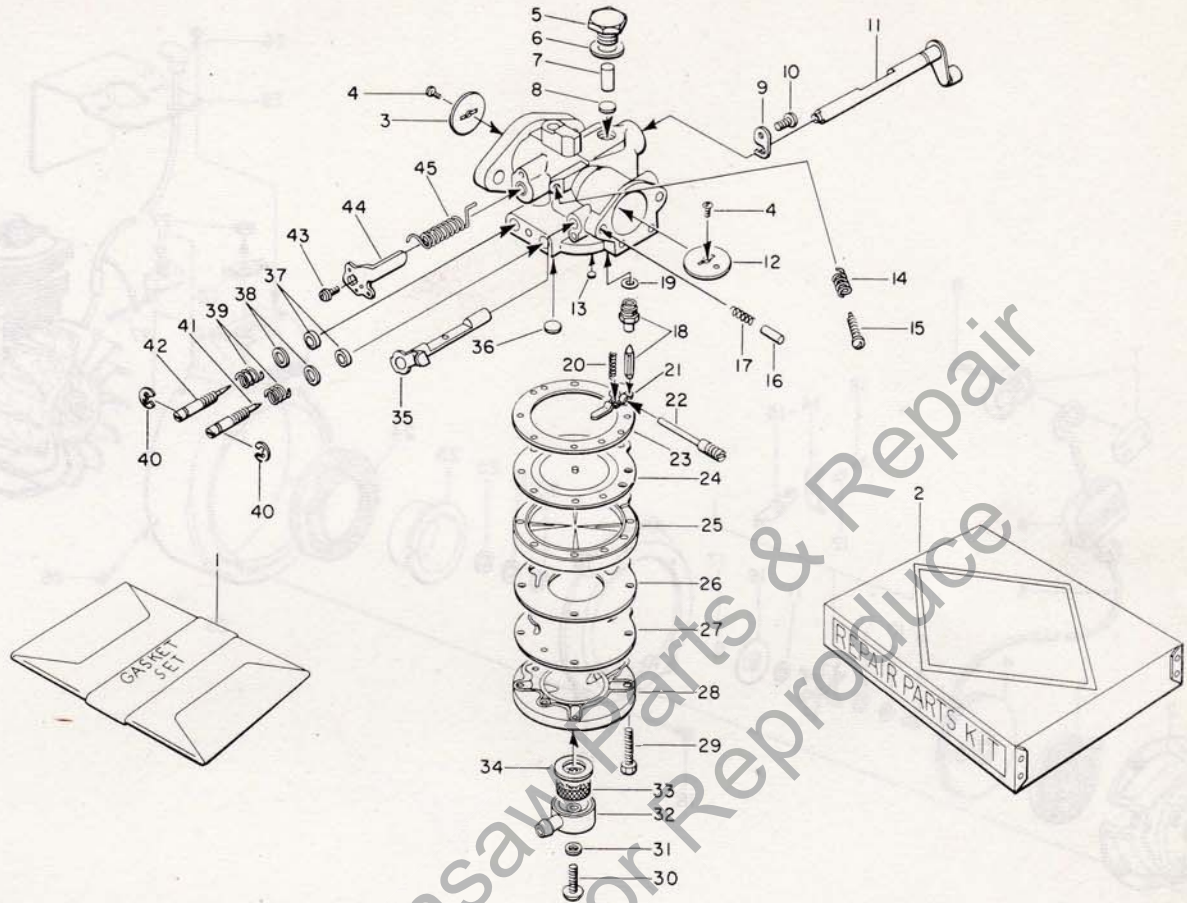
*Included in Gasket Set GS145.

**Included in Repair Parts Kit RK-420.

**HOMELITE
BUZ**

always give model and serial number of unit when ordering parts

CARBURETOR BROWN MODEL 9-CP



Index No.	Part No.	Nomenclature	No. Required
1	**77336	GASKET SET (BGS-152)	1
2	77398 A-56761	REPAIR PARTS KIT (BRK-165) CARBURETOR—Brown Model 9-CP	1
		Composed of items 3 thru 45	
3	74980	SHUTTER—throttle	1
4	77044	SCREW—shutter, rd. hd., 4-40 x 1/8"	2
5	**77306	SCREW—plug	1
6	77307	GASKET—plug screw	1
7	**77308	FILTER—felt	1
8	**77317	SCREEN—filter	1
9	**74981	CLIP—throttle shaft	1
10	**77041	SCREW—throttle clip, pan hd., 16-32 x 3/16"	1
11	A-77389	THROTTLE SHAFT	1
12	74991	SHUTTER—choke	1
13	**77381	PLUG—welch (main channel)	1
14	77010	SPRING—idle stop screw	1
15	77040	SCREW—idle stop, rd. hd., 6-32 x 9/16"	1
16	77018	PIN	1
17	77017	SPRING	1
18	**A-77327	NEEDLE and SEAT—inlet Includes	1
19	*77346	GASKET—copper	1
20	**77015	SPRING—control lever	1
21	**77016	LEVER—control	1

Index No.	Part No.	Nomenclature	No. Required
22	**A-77326	PIN—control lever	1
23	*77368	GASKET—main diaphragm	1
24	*A-77370	DIAPHRAGM—main	1
25	77371	COVER—main diaphragm	1
26	*77305	GASKET—pump	1
27	*77304	DIAPHRAGM—pump	1
28	A-77374	BODY—pump	1
29	77160	SCREW—body, fil. hd., 6-32 x 3/4"	4
30	77320	SCREW—fuel connection	1
31	*74997	GASKET—fiber	1
32	77318	TURRET—fuel inlet connection	1
33	77376	SCREEN	1
34	*77319	GASKET—turret	1
35	A-77397	CHOKE LEVER and SHAFT	1
36	**74977	PLUG—welch, idle channel	1
37	*77007	RING—square (packing)	2
38	**77006	WASHER—adjustment packing	2
39	**77005	SPRING—adjustment compression	2
40	77004	CLIP—spring retaining	2
41	**A-77328	SCREW—main mixture adjustment	1
42	**A-77251	SCREW—idle mixture adjustment	1
43	**77042	SCREW—idle stop	1
44	74989	LEVER—throttle stop	1
45	**77391	SPRING—throttle return	1

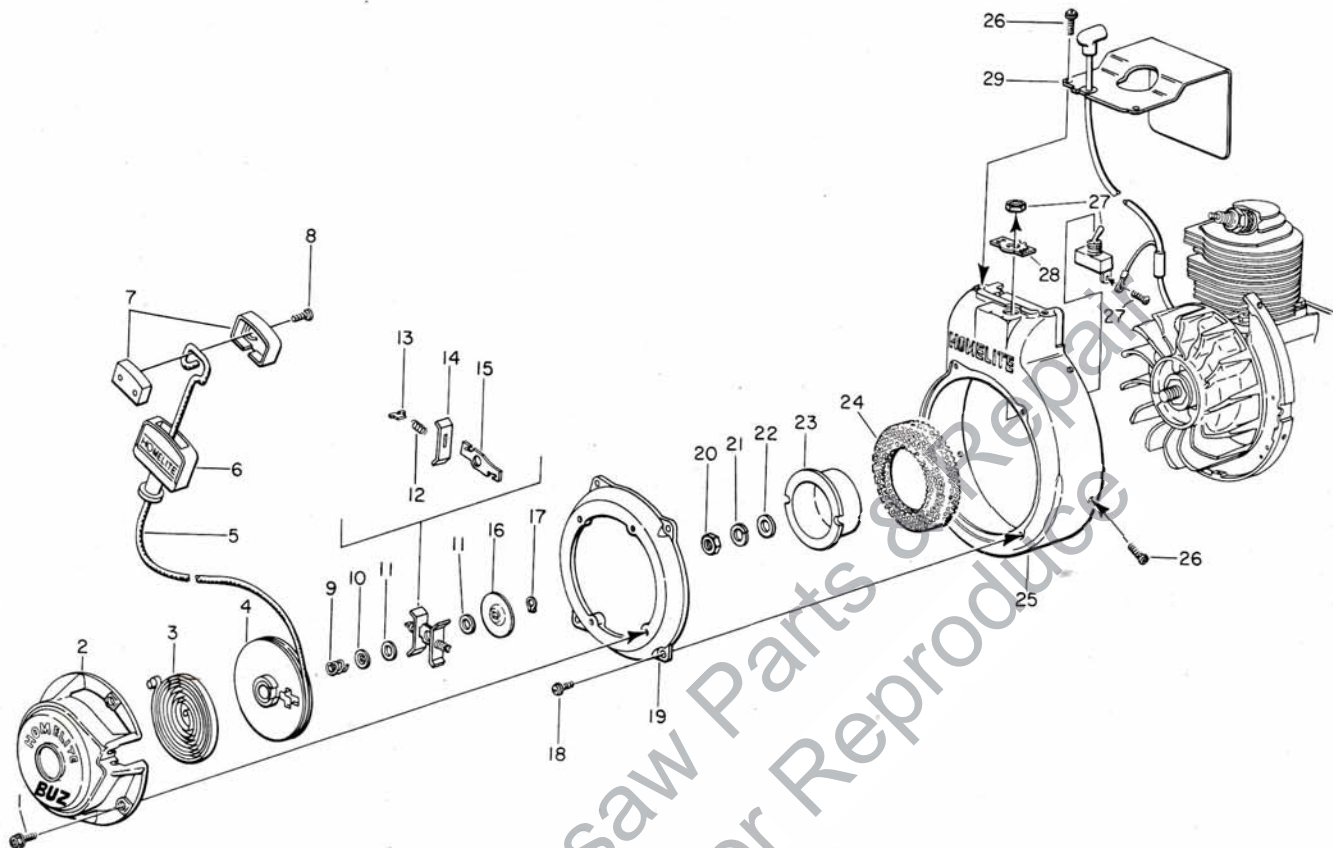
*Included in Gasket Set BGS152.

**Included in Repair Parts Kit BRK165.

always give model and serial number of unit when ordering parts

**HOMELITE
BUZ**

STARTER PARTS



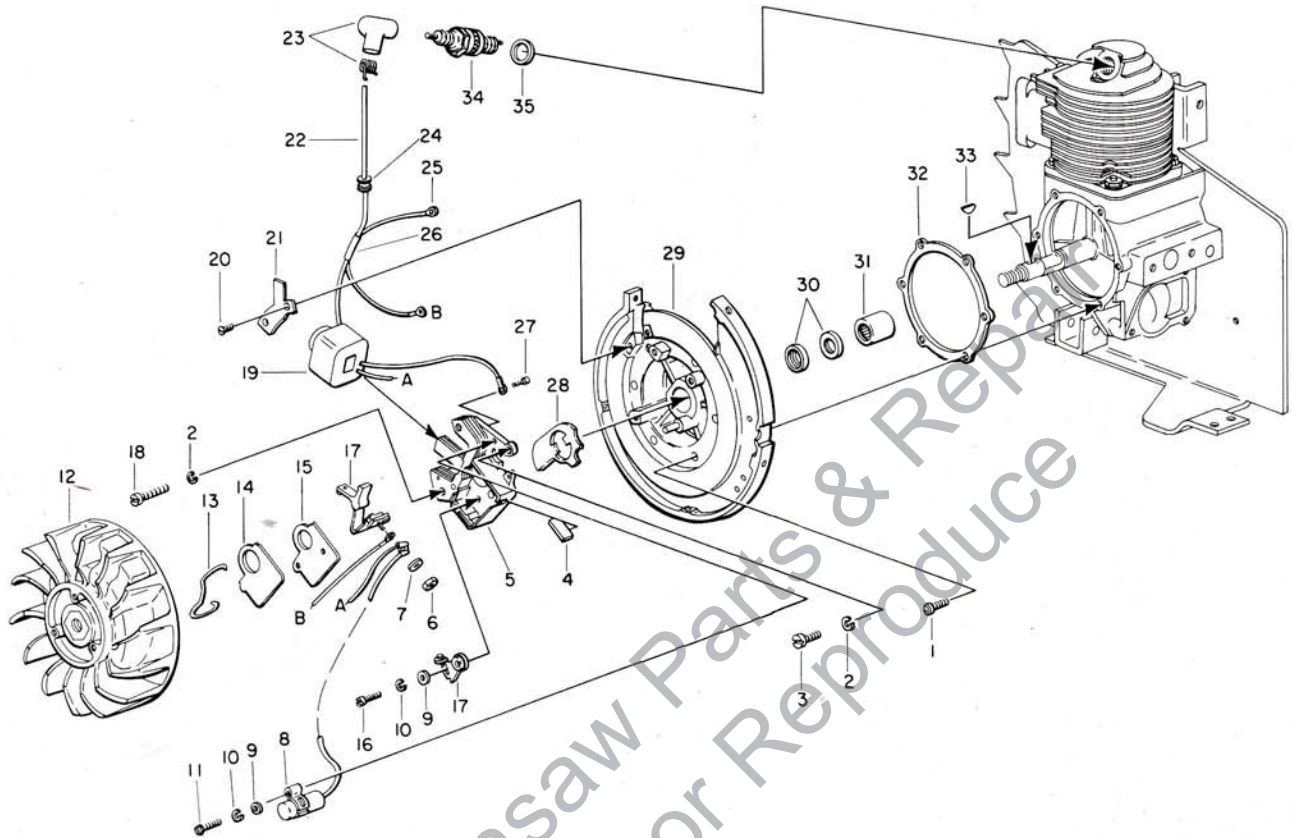
Index No.	Part No.	Nomenclature	No. Required
1	80681	SCREW—hex hd., 1/4-20 x 1/2"	4
2	56450-2	COVER—pulley	1
	56752	DECALCOMANIA—"HOMELITE"	1
	56753	DECALCOMANIA—"BUZ"	1
3	56451	SPRING—rewind	1
4	56452	PULLEY	1
5	55899	STARTING ROPE	1
6	55937	GRIP—starting	1
7	A-56081	INSERT—grip	1
		Includes	
8	80619	SCREW	2
9	56455	SPRING—brake	1
10	56456	WASHER—brake	1
11	56457	WASHER—fiber	1
12	56460	SPRING—friction shoe	2
13	56461	PLATE—spring retainer	2
14	56458	LEVER—brake	1

Index No.	Part No.	Nomenclature	No. Required
15	56459	PLATE—friction shoe	2
16	56462	WASHER—brake retainer	1
17	56463	SNAP RING	1
18	80576	SCREW—pan hd., 10-32 x 3/16"	4
19	56426	ADAPTER—starter	1
20	81110	NUT—hex, 7/16-20	1
21	83019	WASHER—lock, 7/16"	1
22	84055	WASHER—flat, 7/16"	1
23	56441	CUP—starter	1
24	56442	SCREEN—starter	1
25	A-55650	HOUSING—fan	1
26	80577	SCREW—pan hd., 8-32 x 3/8"	7
27	A-55877	"ON-OFF" SWITCH	1
		Includes	
		NUT	1
28	55879	PLATE—"ON-OFF"	1
29	56703	SHIELD—cylinder	1

**HOMELITE
BUZ**

always give model and serial number of unit when ordering parts

IGNITION SYSTEM



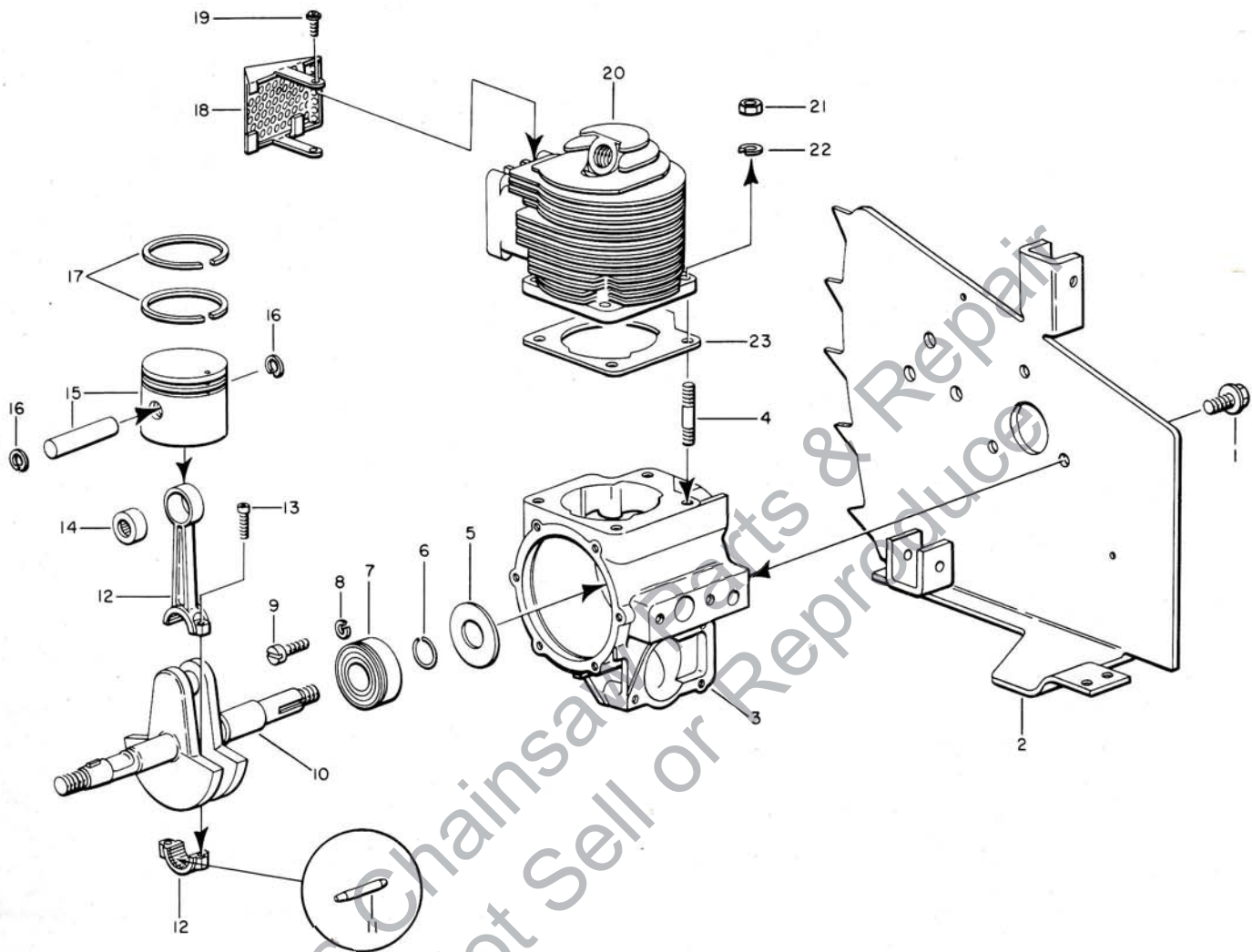
Index No.	Part No.	Nomenclature	No. Required
1	80576	SCREW—pan hd., 10-32 x 3/16"	6
2	83046	WASHER—lock, No. 10	3
3	80595	SCREW—fil. hd., 10-24 x 1/2"	1
4	55984	FELT—cam wiper	1
5	55969	CORE AND BREAKER BOX	1
6	55982	NUT—terminal	1
7	55983	WASHER—terminal	1
8	55987	CONDENSER	1
9	84048	WASHER—flat, No. 8	2
10	83060	WASHER—lock, No. 8	2
11	55988	SCREW—condenser fastening	1
12	56026	ROTOR—magneto	1
13	55980	CLAMP—breaker box cover	1
14	55979	COVER—breaker box	1
15	55978	GASKET—breaker box	1
16	55985	SCREW—breaker arm fastening	1
17	A-55971	SET OF POINTS (Includes item No. 4)	1
18	80660	SCREW—fil. hd., 10-24 x 7/8"	2
19	55986	COIL	1

Index No.	Part No.	Nomenclature	No. Required
20	80598	SCREW—flat hd., 6-32 x 5/16"	2
21	55595-1	CLAMP—back plate	1
22	56029	HIGH TENSION LEAD	1
23	A-55373	SPARKY	1
24	60929	GROMMET	1
25	56028	STOP LEAD (to "ON-OFF" switch)	2
26	56027	SLEEVE—insulation	1
27	55977	SCREW—ground terminal	1
28	55989	FELT—sealing	1
29	A-56080	BACK PLATE with pivot post	1
		Includes	
	56206	TAPE—insulation	1
30	71597	SEAL—Garlock	2
31	55204	BEARING—needle	1
32	55049	GASKET—back plate	1
33	75078	KEY—rotor	1
34	40190-S	SPARK PLUG—Champion J-6-J	1
		Includes	
35	25038	GASKET—spark plug	1

always give model and serial number of unit when ordering parts

**HOMELITE
BUZ**

ENGINE



Index No.	Part No.	Nomenclature	No. Required
1	80741	SCREW—hex hd., spin lock, $\frac{5}{16}$ -18 x $\frac{3}{8}$ "	3
2	A-56706	DRIVE PLATE	1
3	A-56714	CRANKCASE	1
		Includes	
4	56470	STUD—cylinder	4
5	55048-A	GASKET—crankcase sealing	1
6	56109	RING—snap	1
7	56097	BEARING—main	1
8	83061	WASHER—lock, $\frac{1}{4}$ "	2
9	19238-A	SCREW—bearing retaining	2
10	56702-A	CRANKSHAFT	1
11	AA-55280	ROLLER—set of 27 needle	1
12	AA-55195	CONNECTING ROD	1

Index No.	Part No.	Nomenclature	No. Required
		Includes	
13	80541	SCREW—Allen cap, 8-32 x $\frac{1}{2}$ "	2
14	55196	BEARING—piston pin	1
15	AA-55279	PISTON AND PIN ASSEMBLY	1
		Includes	
16	55095	RING—piston pin retaining	2
17	55038	RING—piston	2
18	A-56613	EXHAUST FLANGE	1
19	80625	SCREW—pan hd., 10-32 x $\frac{1}{2}$ "	2
20	56403	CYLINDER	1
21	81065-2	NUT—hex, $\frac{1}{4}$ -28	4
22	83009	WASHER—lock, $\frac{1}{4}$ "	4
23	55050-A	GASKET—cylinder	1

**HOMELITE
BUZ**

always give model and serial number of unit when ordering parts

HOMELITE

Authorized Sales and Service Branches

Homelite sales and service factory branches are located throughout the country. Field representatives and factory-trained servicemen are always available, ready and able to keep your Homelites running in top performance at all times. See the "Yellow Pages" for the address and phone number of your nearest Homelite Branch office.

Alabama
Birmingham

California
Alhambra (Los Angeles area)
Fresno
Sacramento
S. San Francisco

Colorado
Denver

Connecticut
Byram
Hartford

Florida
Jacksonville
Miami

Georgia
Atlanta

Illinois
Bloomington
Springfield
Stone Park (Chicago area)

Indiana
Indianapolis

Louisiana
Bossier City
Metairie

Maine
Orono

Maryland
Baltimore

Massachusetts
Allston (Boston area)

Michigan
Detroit
Grand Rapids
Saginaw

Minnesota
St. Paul

Mississippi
Jackson

Missouri
Kansas City
St. Louis

Nebraska
Omaha

New Jersey
North Arlington
Woodbridge

New York
Buffalo
Latham (Albany area)
Rochester
Syracuse

North Carolina
Charlotte
Raleigh

Ohio
Cincinnati
Cleveland
Toledo

Oklahoma
Oklahoma City

Oregon
Portland

Pennsylvania
Altoona
Erie
Harrisburg
Hazleton
Malvern
Philadelphia
Pittsburgh

Tennessee
Knoxville
Memphis

Texas
Cleveland

Dallas
Houston
Lufkin
Silsbee

Utah
North Salt Lake

Virginia
Arlington
Richmond
Roanoke

Washington
Seattle
Spokane

West Virginia
Charleston
Clarksburg

Wisconsin
Milwaukee

CANADA

TERRY MACHINERY CO., LTD.

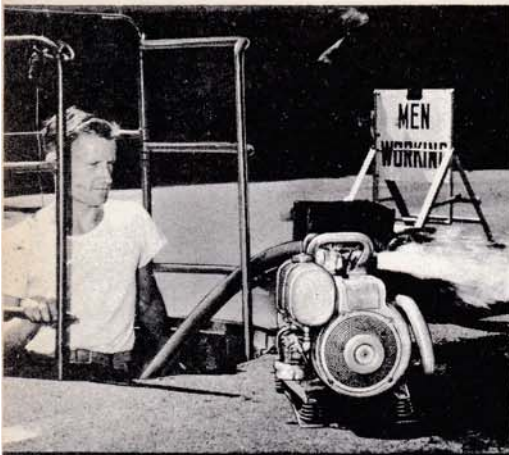
Quebec
St. Laurent
Quebec

Alberta
Edmonton

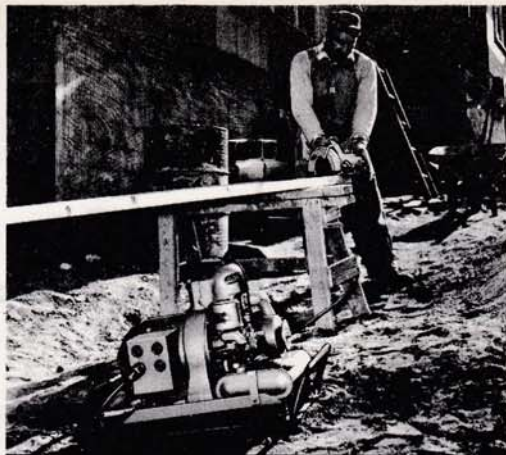
British Columbia
Vancouver
Prince George

New Brunswick
Moncton

Ontario
Ottawa
Toronto
Port Arthur



HOMELITE
SELF-PRIMING PUMPS



HOMELITE
DEPENDABLE GENERATORS



HOMELITE—BOSCH (Germany)
ELECTRIC PAVING BREAKERS

*You'll SPEED work
and make MORE MONEY with...*

HOMELITE *Carryable* **PRODUCTS**

all powered by famous HOMELITE engines

Homelite's two-cycle gasoline engines are the most efficient and dependable units of their kind ever built. Their two-cycle design, developed to perfection by Homelite engineers over the past 35 years, gives maximum power for the least weight because power is produced at every piston down stroke. As an added advantage, this design requires fewer moving parts which means greater dependability and lower maintenance.



HOMELITE
ONE-MAN CONCRETE VIBRATORS



HOMELITE—BOSCH (Germany)
ELECTRIC BUILDER'S HAMMERS

HOMELITE

a division of Textron Inc.
PORT CHESTER, N. Y.