

# HOMELITE CHAIN SAW



**PARTS LIST**

# HOMELITE CHAIN SAW MODEL 990 D

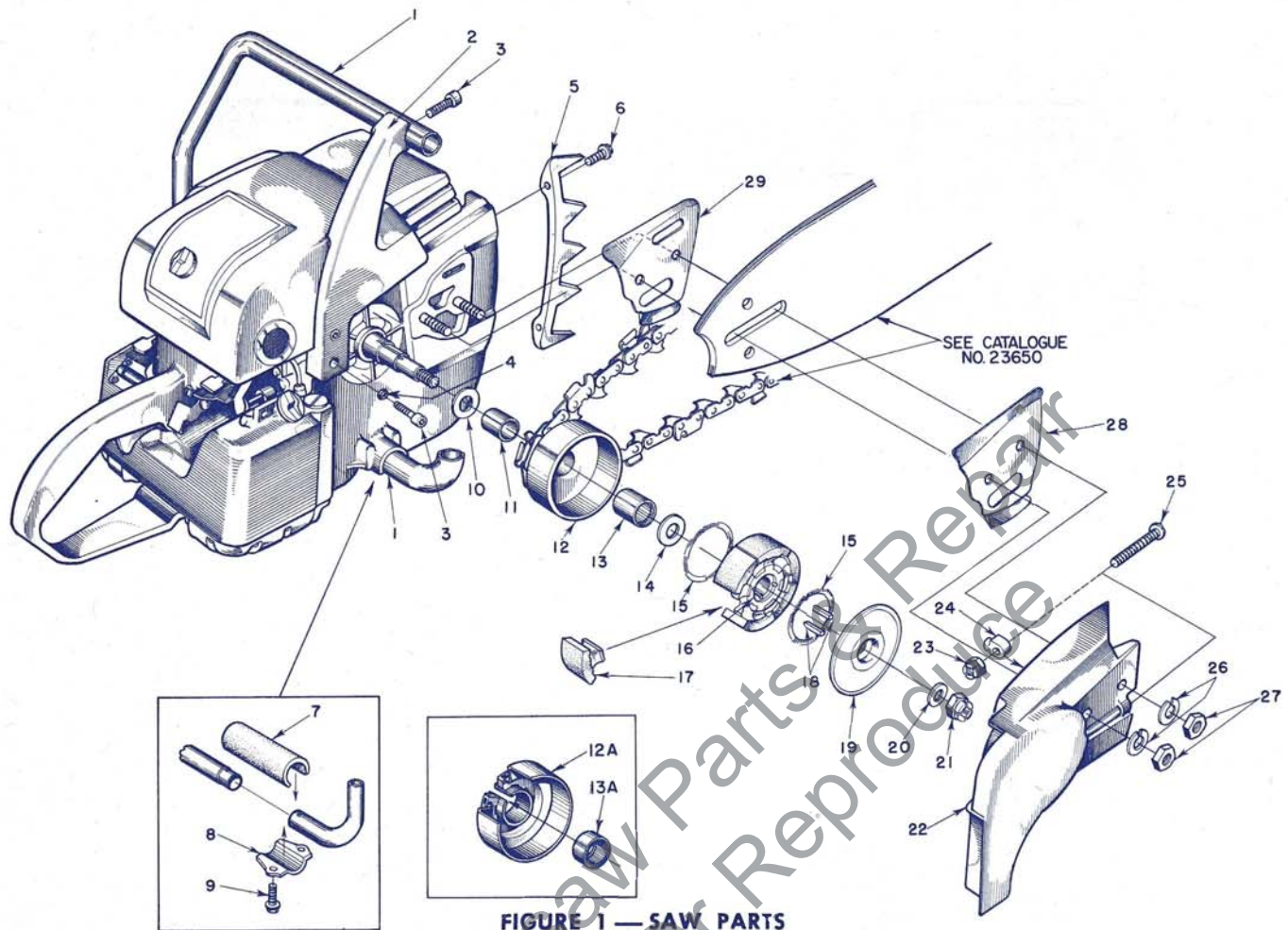


FIGURE 1 — SAW PARTS

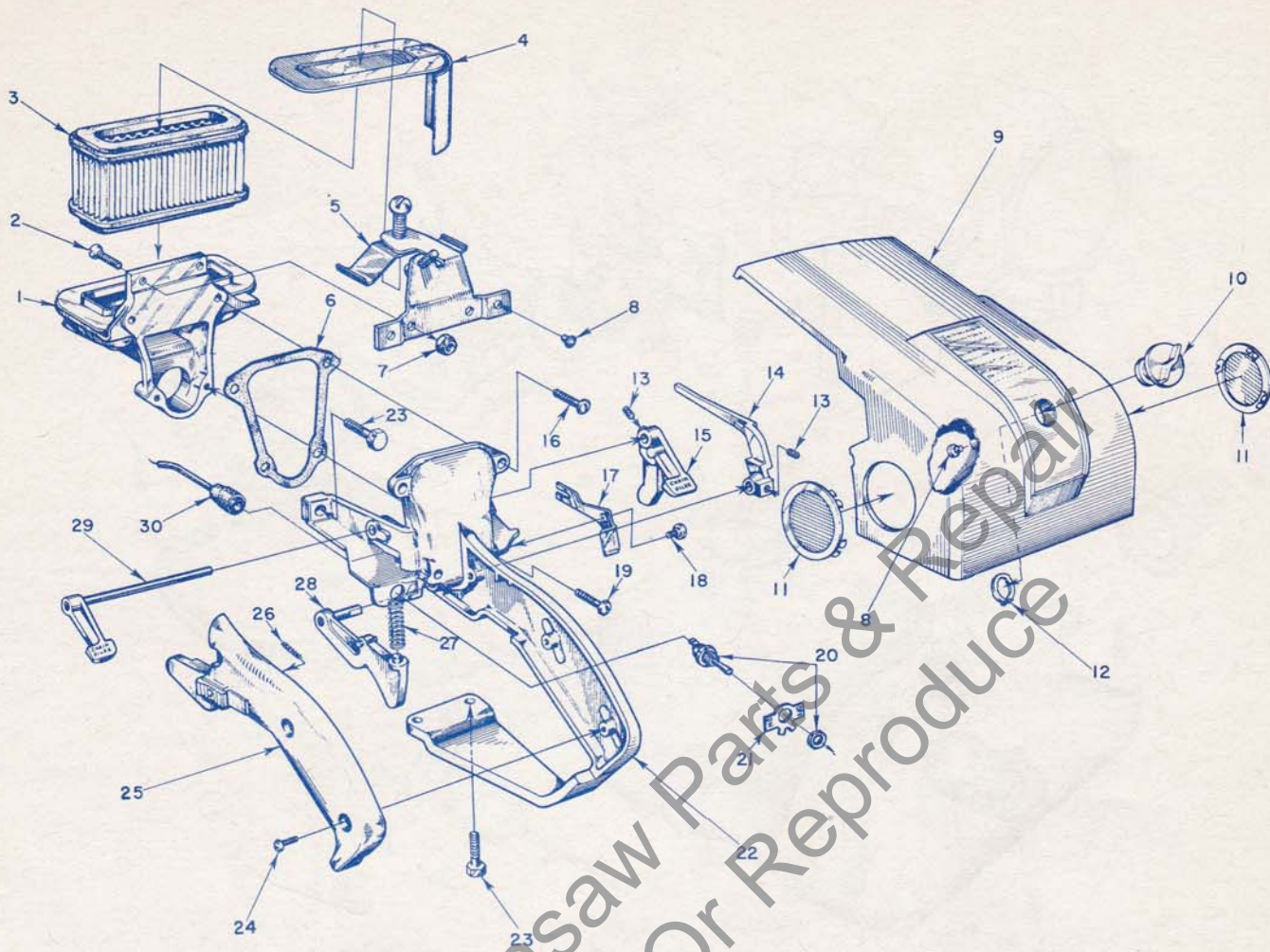
Index No.	Part No.	Description	No. Required	Index No.	Part No.	Description	No. Required
1	A-57868	HANDLE BAR	1	13A	77442	BEARING—needle	1
2	A-56360	PLATE—handle bar mounting	1	14	56132	WASHER—thrust, outer	1
	56298	BUMPER—rubber (not shown)	1	15	55123-C	SPRING—clutch	2
3	80671	SCREW— $\frac{3}{16}$ -18 x $1\frac{1}{8}$ socket hd.	3	16	55075-3A	SPIDER—clutch	1
4	56628	WASHER— $\frac{3}{16}$ -18 flat	2	17	55076-1A	SHOE—clutch	6
5	55632	PLATE—spiked bumper	1	18	55225-1A	KEY—clutch	2
6	80573	SCREW— $\frac{1}{4}$ -20 x $1\frac{1}{16}$ hex hd.	2	19	56238-A	COVER—clutch	1
7	56281	CUSHION—handle bar	2	20	55036	WASHER—clutch retaining	1
8	56282-A	CLAMP—handle bar	2	21	81116	NUT— $\frac{3}{8}$ -24 flex-lock	1
9	80676	SCREW—12-24 x $\frac{5}{8}$ hex hd.	4	22	A-56870-1	COVER—drive case	1
10	56236	WASHER—thrust, inner	1			Includes	
11	56231	RACE—inner	1	23	81123	NUT— $\frac{3}{16}$ -18 flex-lock	1
12	A-56615	SPROCKET & DRUM (standard 7 Tooth— $\frac{1}{2}$ pitch)	1	24	55613	PIN—guide bar adjusting	1
		Includes		25	80617	SCREW— $\frac{3}{16}$ -18 x 2 rd. hd.	1
13	56230	BEARING—needle	1	26	83018	WASHER— $\frac{3}{8}$ lock	2
12A	A-57364	SPROCKET & DRUM (optional 7 tooth $\frac{7}{16}$ pitch) new roller type	1	27	81089	NUT— $\frac{3}{8}$ -16 hex	2
		Includes		28	56872-A	PLATE—guide bar (outer)	1
				29	56871	PLATE—guide bar (inner)	1

## SPECIAL TOOLS AVAILABLE ON ORDER

Combination Wrench #22808 supplied with saw

Part No.	Description	Part No.	Description
AA-22560	MAGNETO ROTOR PULLER	23233	PLUG—garlock seal (back plate)
A-23131	CLUTCH SPIDER PULLER	23391	ASSEMBLY TOOL—needle bearing
23136	BODY—assembling fixture	22828	PLIERS—Tru-arc (piston)
23373	ADAPTER—bearing assembly	22126	WRENCH—socket screw (conn. rod)
A-23137	JACK SCREW ASSEMBLY	23420	ASSEMBLY TOOL—clutch drum bearing
23383	PLATE—shaft aligning	23422	SLEEVE—crankshaft seal
23372	ASSEMBLY TOOL—wrist pin bearing	23382	SPACER—crankshaft assembly
		23384	PLUG—crankshaft seal

# HOMELITE CHAIN SAW MODEL 990 D

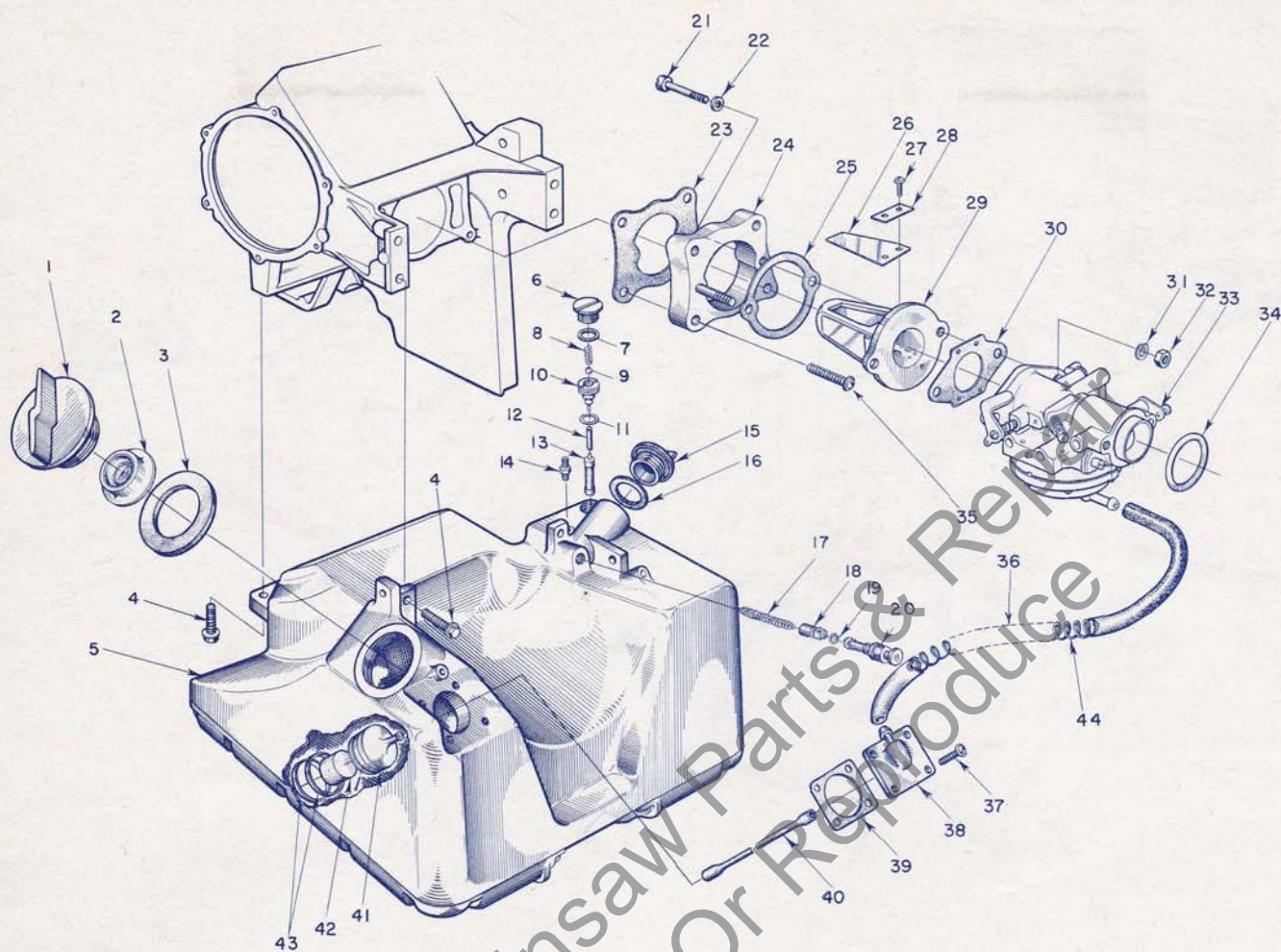


**FIGURE 2 — ENGINE CONTROL PARTS**

Index No.	Part No.	Description	No. Required
1	A-57714	ADAPTER—air filter .....	1
2	80035	SCREW—10-32 x 5/8 flat hd. ....	2
3	57599-A	ELEMENT—air filter .....	1
4	A-57727	CAP—air filter .....	1
5	A-57793	BRACKET—adapter w/spring and screws ....	1
6	56280	GASKET—air filter case .....	1
7	81109	NUT—10-32 flex-lock .....	2
8	56298	BUMPER—rubber .....	2
9	A-57156	SHROUD—cylinder, w/56298 bumpers .....	1
	56400	DECAL—"HOMELITE" .....	1
	56363-B	DECAL—starting instructions .....	1
10	A-56521	NUT—mounting w/insert .....	1
11	74099-1	PLUG—button .....	2
12	56522	RING—snap .....	1
13	80353	SCREW—set, cup point .....	2
14	56105	ARM—throttle .....	1
15	56227	LEVER—oiler .....	1
16	80625	SCREW—10-32 x 1/2 pan hd. ....	2

Index No.	Part No.	Description	No. Required
17	56241	LEVER—choke .....	1
18	56242	SCREW—choke lever .....	1
19	80624	SCREW—10-32 x 1 pan hd. ....	2
20	A-57716	SWITCH—toggle .....	1
		Includes	
21	55879	PLATE—"on-off" .....	1
22	A-57724	HANDLE—throttle w/bushings .....	1
23	80573	SCREW—1/4-20 x 1 1/16 hex hd. ....	4
24	80560	SCREW—8-32 x 1/2 pan hd. ....	3
25	A-56345	COVER—grip .....	1
		Includes	
	AA-55282	LOCK—throttle .....	1
		Includes	
26	72970	SPRING .....	1
27	55045-A	SPRING—throttle trigger .....	1
28	A-56343	TRIGGER—throttle .....	1
29	A-56358	SHAFT & LEVER—oiler .....	1
30	A-57720	LEAD—ground (with terminals, sleeve & boot)..	1

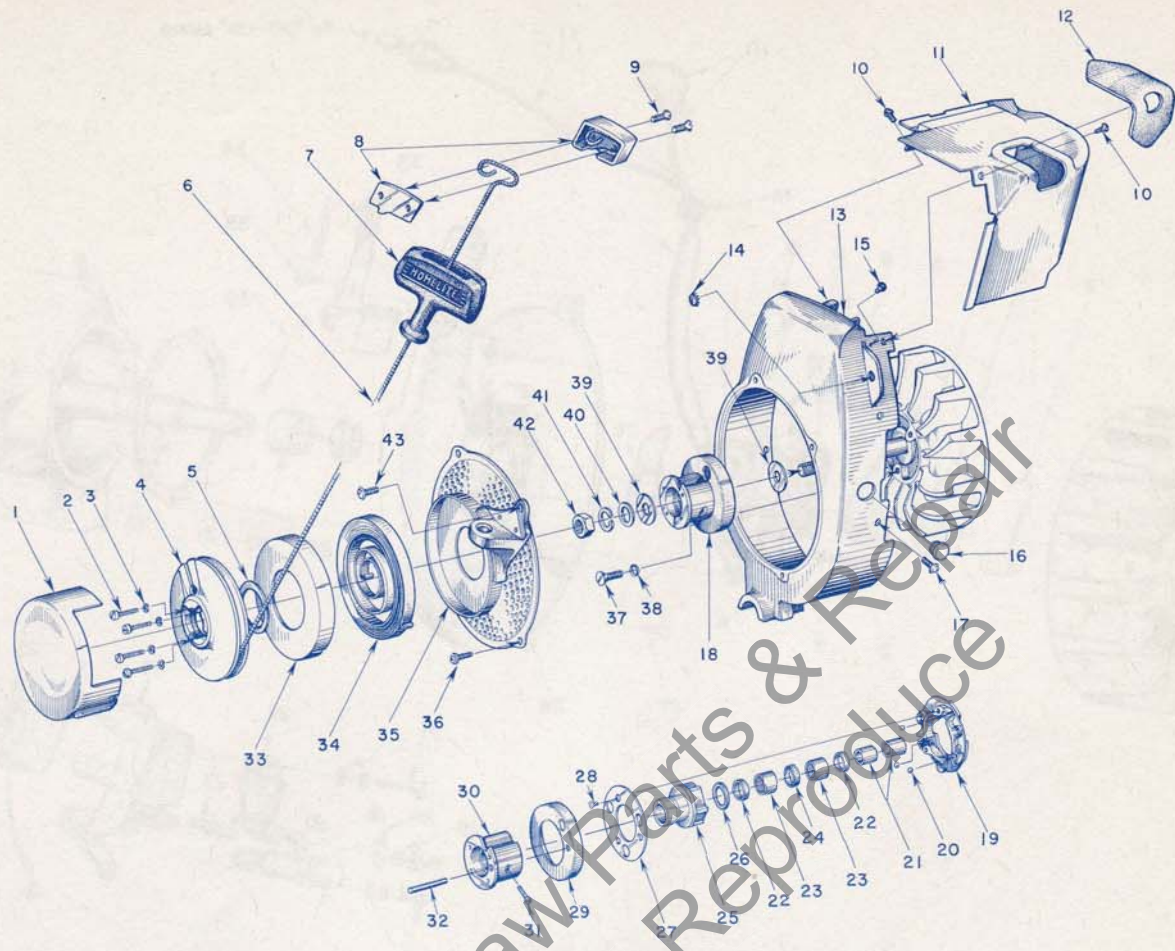
# HOMELITE CHAIN SAW MODEL 990 D



**FIGURE 3 — FUEL INDUCTION SYSTEM**

Index No.	Part No.	Description	No. Required	Index No.	Part No.	Description	No. Required
1	A-56907	CAP — fuel	1	22	25304	WASHER — fibre	2
		Includes		23	56279	GASKET — spacer	1
2	56865	VALVE — relief	1	24	56075-1B	SPACER — reed adapter	1
3	56335	GASKET	1	25	55946	GASKET — reed adapter	1
4	80573	SCREW — 1/4-20 x 1 1/16 hex. hd.	4	26	55941	REED	4
5	A-56328	FUEL TANK	1	27	80658	SCREW — 4-40 x 3/16 pan hd.	8
6	AA-55167	CAP — oil supply line	1	28	55942	PLATE — reed	4
7	55107	GASKET	1	29	55932-2	ADAPTER — reed valve	1
8	55288-A	SPRING — check valve	1	30	55553-1	GASKET — carburetor	1
9	25527	BALL — check, 5/32 dia.	1	31	83009	WASHER — 1/4 lock	2
10	55109-A	SEAT — check valve	1	32	81013	NUT — 1/4-20 hex.	2
11	55110	GASKET	1	33	A-57806	CARBURETOR ASSEMBLY — Til. HL-119A	1
12	56262	SLEEVE — flexible, oil	1	34	57938	"O" RING—air intake	1
13	AA-55259-A	PICK-UP — oil	1	35	80743	SCREW — 10-32 x 1 1/16 pan hd.	4
14	A-55824	VALVE — check	1	36	55680	FUEL LINE	1
15	A-56330	CAP — chain oil	1	37	80605	SCREW — 6-32 x 5/16 pan hd.	4
		Includes		38	A-56650	FITTING —outlet	1
16	72280	GASKET	1	39	56333	GASKET — outlet fitting	1
17	71762	SPRING — plunger	1	40	55805	SLEEVE — flexible	1
18	A-74406	TUBE — plunger	1	41	A-56200	STRAINER — fuel, w/brass nail	1
		Includes		42	74374	FILTER — felt	1
19	74388	"O" RING	1	43	56196	BUMPER — rubber	2
20	71764	BUTTON — plunger	1	44	57915	SPRING—fuel line	1
21	80161	SCREW — 1/4-20 x 1 1/8 fil. hd.	2				

# HOMELITE CHAIN SAW MODEL 990 D

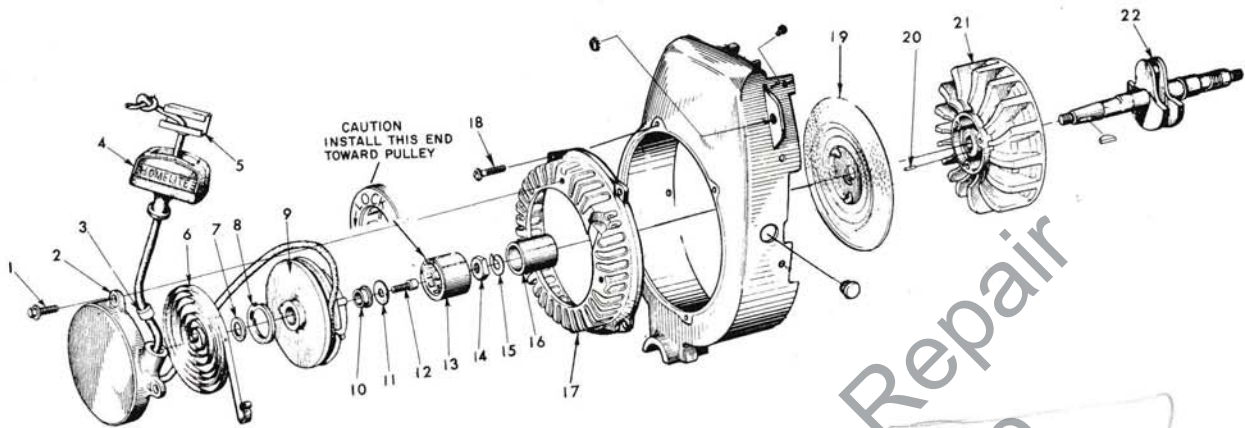


**FIGURE 4 — STARTER PARTS**

Index No.	Part No.	Description	No. Required	Index No.	Part No.	Description	No. Required
1	AA-73234-1	COVER—starter pulley	1	22	71597	SEAL—garlock	2
2	80475	SCREW—6-32 x 3/4 flt. hd.	4	23	71596	BEARING—needle	2
3	83004	WASHER—lock, #6	4	24	71595	WICK—felt	1
4	55597-2	PULLEY—starter	1	25	AA-73549	RATCHET	1
5	71588	SHIM—pulley	as req'd			Includes	
6	55898	ROPE—starter	1	26	73525	WASHER—formica	1
7	55937	GRIP—starter	1	27	71570-B	RETAINER—ball	1
8	A-56081	INSERT—grip	1	28	80464	SCREW—5-40 x 5/16 flat hd.	3
		Includes		29	56896	CUP—sealing	1
9	80619	SCREW—10-32 x 3/8 flat hd.	2	30	A-57098	HUB—ratchet	1
10	80577	SCREW—8-32 x 3/8 pan hd.	2			Includes	
11	A-57155	SHIELD—cylinder w/56873-A cover	1	31	72295-A	SCREW—ratchet hub	1
12	56873-A	COVER—spark plug	1	32	57065	PIN—spiral	1
13	A-56912	SHROUD—air	1	33	71603	COVER—spring housing	1
		Includes		34	56497	SPRING—recoil	1
14	55681	PLUG—button	1	35	A-56302	SCREEN & BRACKET	1
15	56298	BUMPER—rubber	2			Includes	
16	56913	PLUG	1	*A-56304	BRACKET & BUSHING	1	
17	80579	SCREW—10-32 x 3/8 pan hd.	5	36	80579	SCREW—10-32 x 3/8 pan hd.	3
18	A-56899	BALL DRIVE	1	37	80173	SCREW—1/4-20 x 5/8 flat hd.	3
		Includes index nos. 19 through 32		38	83074	WASHER—1/4 countersunk, lock	3
19	71563-C	PLATE—ball drive	1	39	55652	WASHER—thrust	2
20	30355-1	BALL—steel	3	40	84055	WASHER—7/16 flat, aluminum	1
21	74221	RACE—inner	2	41	83019	WASHER—7/16 lock	1
	AA-72306-1	RATCHET BEARING	1	42	81110	NUT—7/16-20 hex-jam	1
		Includes		43	80576	SCREW—10-32 x 3/8 pan hd. (at bracket)...	1

\*Assemble to screen with 85073 rivet.

*Always furnish saw model and serial number when ordering parts*



995D NEW PARTS 995G

Index Numbers 1 through 20 are used in place of ball drive starter parts shown in 990D and 990G parts list. Only new numbers are listed here. For example, the starting rope and air shroud part numbers do not change so these parts remain as listed in the 990 parts lists.

Illustrated:	Part No.	Part	Refer to these parts list pages for related parts			Part No.	Part	Refer to these parts list pages for related parts		
			QTY. Req.	990D Page	990G Page			QTY. 990D Req.	990D Page	990G Page
	1	*80867	3	5	4	11	*58413	1	5	4
	2	*A-59494-1	1	5	4	12	*80878	1	5	4
		Includes				13	*58480	1	5	4
	3	*59313	1	5	4	14	*81191	1	5	4
	4	*55937	1	5	4	15	*83019	1	5	4
	5	*58517	1	5	4	16	*58268	1	5	4
	6	*58428-A	1	5	4	17	58048-A	1	5	4
	7	*58412	1	5	4	18	80583	4	5	4
	8	*58009	1	5	4	19	58003	1	5	4
	9	*A-59495	1	5	4	20	*58429	1	5	4
		Includes				21	56276-B	1	6	5
	10	*58007	1	5	4	22	59650	1	7	7

\*Also used in C-51, C-71, C-91 saws

Not Illustrated:

A-59251	STRAINER	1	4	3	†58546-2	SPIDER - clutch 995D	1	2
	Includes				†58547-1	SPIDER - clutch 995G	1	6
59253	FILTER - felt	1	4	3	†A-59463	DAMPER - heat	1	7

†New threaded type spider

††Outlet of exhaust cap and new heat damper now directs exhaust toward guide bar side of saw.

TOOLS:

A-23696	REMOVER-threaded spider	2	8	A-23679	REMOVER-starter bearing	2	8
23678	ASSEMBLY TOOL-starter bearing	2	8				

# HOMELITE CHAIN SAW MODEL 990 D

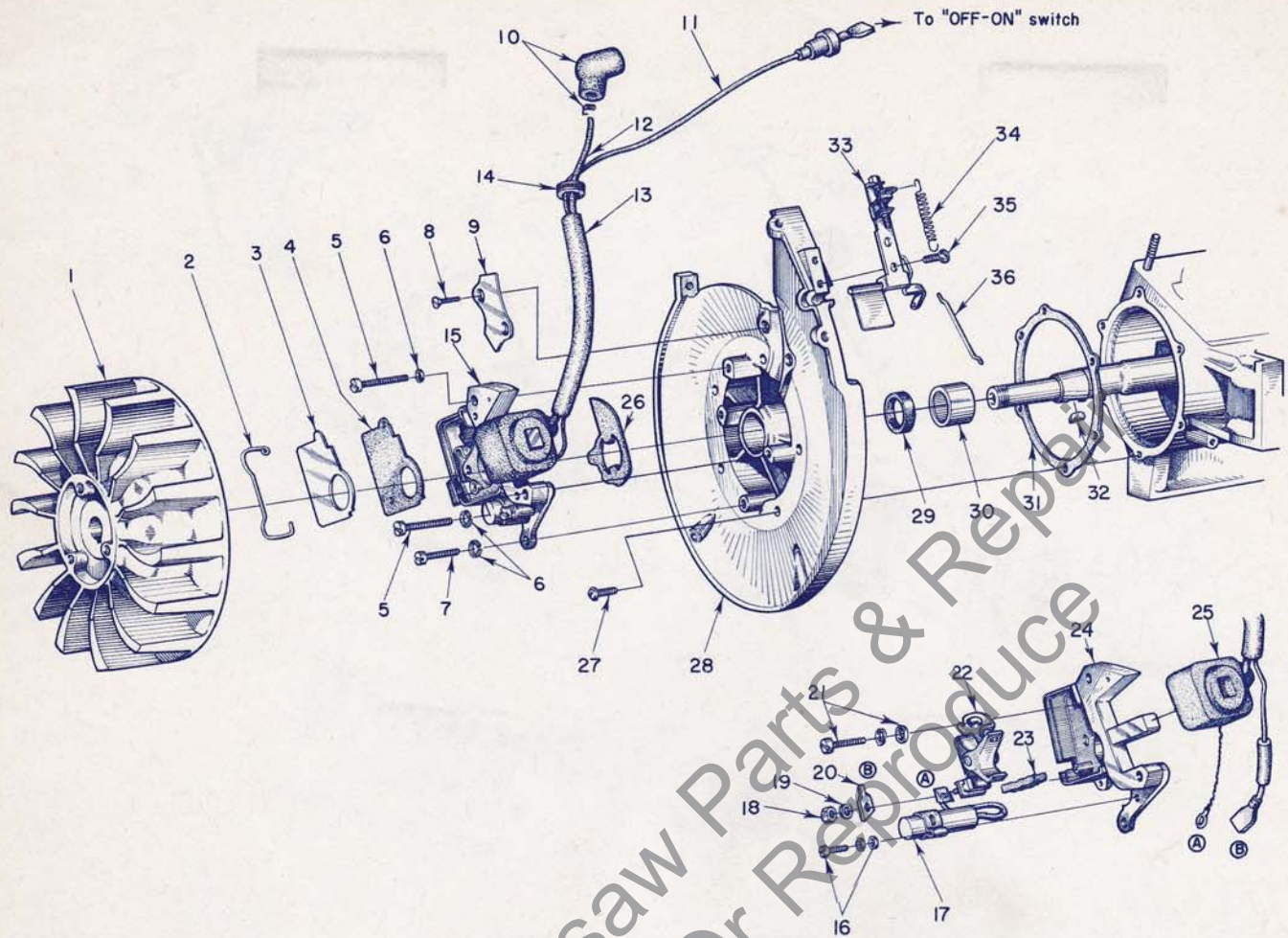


FIGURE 5 — IGNITION SYSTEM

Index No.	Part No.	Description	No. Required	Index No.	Part No.	Description	No. Required
1	56276	ROTOR — magneto .....	1	18	55982	NUT — terminal .....	1
2	55980	CLAMP — dust cover .....	1	19	55983	WASHER — terminal .....	1
3	55979	COVER — dust .....	1	20	57733	TAB — ground terminal .....	1
4	55978-2	GASKET — dust cover .....	1	21	57749	SCREW GROUP — point fastening .....	1
5	80660	SCREW — 10-24 x 7/8 fil. hd. ....	2	22	A-58165	SET OF POINTS — w/pivot pin .....	1
6	83046	WASHER — lock #10 .....	3			Includes	
7	80595	SCREW — 10-24 x 1/2 fil. hd. ....	1	23	55984	FELT — cam wiper .....	1
8	80598	SCREW — 6-32 x 5/16 flat hd. ....	2	24	57744	BOX — breaker, w/core .....	1
9	56250	CLAMP — lead .....	1	25	55986	COIL (with terminal) .....	1
10	A-55373	TERMINAL—"SPARKY" cover and spring ..	1	26	56292-A	WASHER — sealing (felt) .....	1
11	A-57720	LEAD — ground w/terminals, sleeves & cover .....	1	27	80576	SCREW — 10-32 x 7/16 pan hd. ....	6
		(also shown on fig. No. 2)		28	A-57845	BACK PLATE .....	1
12	55235-A	LEAD — high tension .....	1			Includes	
13	56294-A	SLEEVE — insulating .....	1	29	56134	SEAL — garlock .....	1
14	71671	GROMMET .....	1	30	56255	BEARING — needle .....	1
15	*	BREAKER BOX .....	1	31	56278	GASKET — back plate .....	1
		Includes items #16 thru #25		32	75078	KEY — rotor .....	1
16	57750	SCREW GROUP — condenser fastening	1	33	A-56272	GOVERNOR (complete) .....	1
17	55987	CONDENSER (with lead and terminal) ....	1	34	58058	SPRING — governor .....	1
				35	80629	SCREW — 8-32 x 5/16 pan hd. ....	2
				36	56246	ROD — governor (to throttle stop lever) ....	1

\*Order individual parts

# HOMELITE CHAIN SAW MODEL 990 D

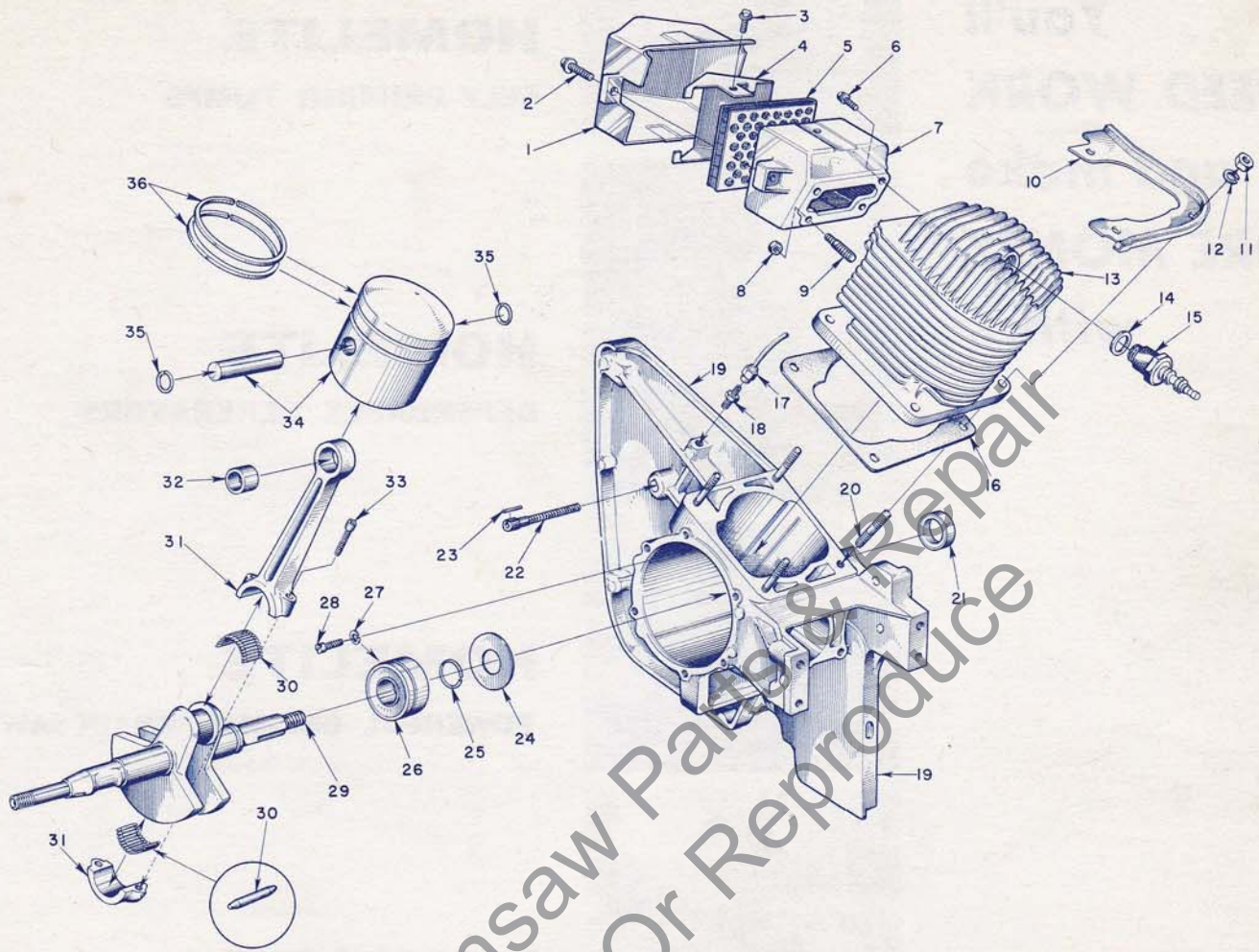


FIGURE 6 — ENGINE PARTS

Index No.	Part No.	Description	No. Required
1	56795	DAMPER—head .....	1
2	80677	SCREW— $\frac{1}{4}$ -20 x $\frac{1}{16}$ hex hd. ....	2
3	80825	SCREW—10-32 x $\frac{1}{16}$ hex hd. ....	2
4	57369	CAP—exhaust .....	1
5	A-57598	ELEMENT—muffer .....	1
6	80751	SCREW—12-24 x $\frac{1}{16}$ hex hd. ....	2
7	56794	BODY—muffer .....	1
8	81108	NUT— $\frac{1}{4}$ -20 flex-lock .....	2
9	57349	STUD—muffer to cylinder .....	2
10	A-56914-A	SHIELD—sawdust, cylinder .....	1
		Includes	
	56916	STRIPPING (cement to shield) .....	1
11	25412	NUT— $\frac{5}{16}$ -24 hex .....	4
12	83042	WASHER— $\frac{5}{16}$ lock .....	4
13	A-58306	CYLINDER .....	1
		Includes	
	58168	BUSHING .....	4
14	25038	GASKET (included with spark plug) .....	1
15	72858-25	SPARK PLUG (Champion H 0-3) .....	1
16	56875-A	GASKET—cylinder .....	1
17	A-56336	LINE—chain oil .....	1
18	31733-1	ADAPTER—straight .....	1

Index No.	Part No.	Description	No. Required
19	A-57089-A	CRANKCASE (service) .....	1
		Includes	
20	72787	STUD—cylinder .....	4
21	56256	SEAL—garlock .....	1
22	57175	BOLT—guide bar .....	2
23	41738	PIN—spirol, guide bar bolt .....	2
24	56258	GASKET—crankcase sealing .....	1
25	56259	RING—snap .....	1
26	56261-S	BEARING—main .....	1
27	83061	WASHER—lock .....	2
28	19238-A	SCREW—bearing retaining .....	2
29	57543-A	CRANK SHAFT .....	1
30	AA-72206	ROLLERS (set of 31 needles) .....	1
31	A-58262-A	ROD—connecting w/cap .....	1
		Includes	
32	71167	BEARING—piston pin .....	1
33	58095	SCREW—10-32 x $\frac{1}{16}$ , allen .....	2
34	A-57090	PISTON & PIN .....	1
		Includes	
35	56290	RING—snap .....	2
36	56828	RING—piston .....	2

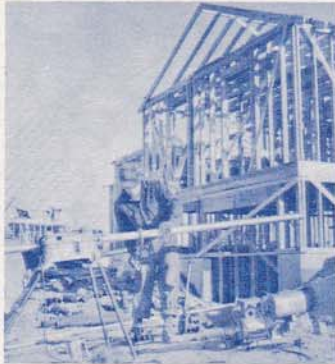
Always furnish saw model and serial number when ordering parts.



**You'll  
SPEED WORK  
and make  
MORE MONEY  
with...**



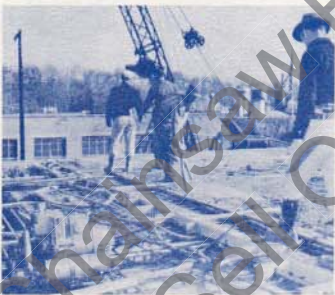
**HOMELITE**  
SELF-PRIMING PUMPS



**HOMELITE**  
DEPENDABLE GENERATORS



**HOMELITE**  
POWERFUL ONE-MAN CHAIN SAWS



**HOMELITE**  
ONE-MAN CONCRETE VIBRATORS



**HOMELITE** — BOSCH (Germany)  
ELECTRIC BUILDER'S HAMMERS

**All Powered By Famous HOMELITE Engines**

Homelite's two-cycle gasoline engines are the most efficient and dependable units of their kind ever built. Their two-cycle design, developed to perfection by Homelite engineers over the past 35 years, gives maximum power for the least weight because power is produced at every piston down stroke. As an added advantage, this design requires fewer moving parts which means greater dependability and lower maintenance



Printed in United States of America

Part No. 23637

8M-5-62

**HOMELITE**

PORT CHESTER, N. Y.

A **textron** DIVISION

A TRUSPECTIVE Publication by  
PURNELL COMPANY, INC.  
Boston, Mass.