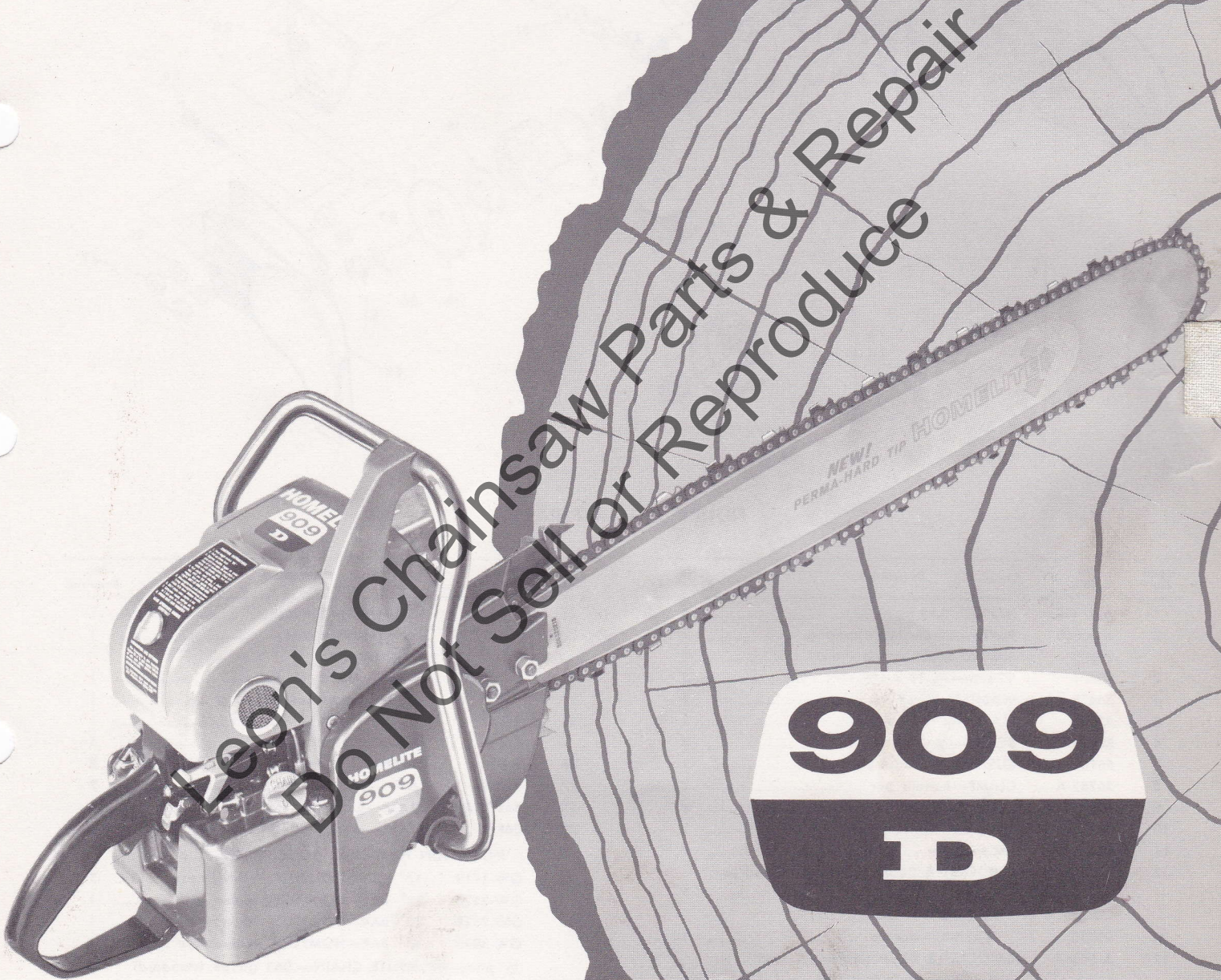


HOMELITE CHAIN SAW



PARTS LIST

HOMELITE CHAIN SAW MODEL 909 D

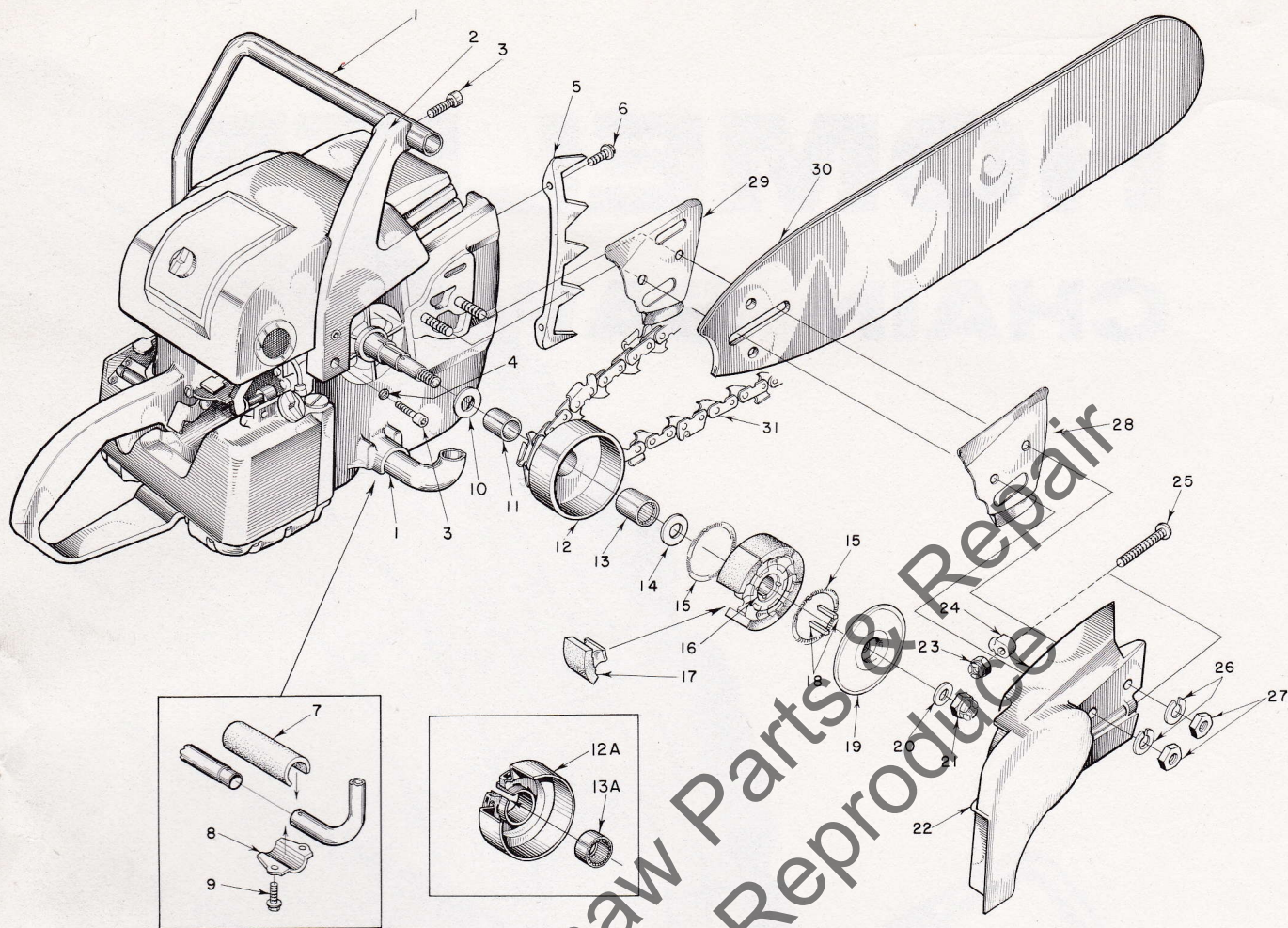


FIGURE 1 — SAW PARTS

Index No.	Part No.	Description	No. Required	Index No.	Part No.	Description	No. Required
1	A-57868	HANDLE BAR	1	21	81116	NUT— $\frac{3}{8}$ -24 flex-lock	1
2	A-56360	PLATE—handle bar mounting	1	22	A-56870-1	COVER—drive case	1
	56298	BUMPER—rubber (not shown)	1			Includes	
3	80671	SCREW— $\frac{5}{16}$ -18 x $1\frac{1}{8}$ socket hd.	3	23	81123	NUT— $\frac{3}{16}$ -18 flex-lock	1
4	56628	WASHER— $\frac{5}{16}$ -18 flat	2	24	55613	PIN—guide bar adjusting	1
5	55632	PLATE—spiked bumper	1	25	80617	SCREW— $\frac{5}{16}$ -18 x 2 rd. hd.	1
6	80573	SCREW— $\frac{1}{4}$ -20 x $1\frac{1}{16}$ hex hd.	2		57656	DECAL (909D)	1
7	56281	CUSHION—handle bar	2	26	83018	WASHER— $\frac{3}{8}$ lock	2
8	56282-A	CLAMP—handle bar	2	27	81089	NUT— $\frac{3}{8}$ -16 hex	2
9	80676	SCREW—12-24 x $\frac{5}{8}$ hex hd.	4	28	56872-A	PLATE—guide bar (outer)	1
10	56236	WASHER—thrust, inner	1	29	56871	PLATE—guide bar (inner)	1
11	56231	RACE—inner	1			INDUCTION HARDENED HOMELITE GUIDE BARS	
12	A-56615	SPROCKET & DRUM (standard 7 Tooth— $\frac{1}{2}$ pitch	1	30	GW-1719	17" BAR—HOMELITE, welded nose	1
		Includes			GW-2123	21" BAR—HOMELITE, welded nose	1
13	56230	BEARING—needle	1		GW-2528	25" BAR—HOMELITE, welded nose	1
12A	A-57364	SPROCKET & DRUM (optional 7 tooth $\frac{7}{16}$ pitch) new roller type	1		GW-3033	30" BAR—HOMELITE, welded nose	1
		Includes				$\frac{1}{2}$ pitch—HOMELITE CHAIN—.063 gauge (standard)	
13A	77442	BEARING—needle	1	31	HC-1051-L	17" CHAIN—w/kit	1
14	56132	WASHER—thrust, outer	1		HC-1058-L	21" CHAIN—w/kit	1
15	55123-C	SPRING—clutch	2		HC-1067-L	25" CHAIN—w/kit	1
16	55075-3	SPIDER—clutch	1		HC-1077-L	30" CHAIN—w/kit	1
17	55076-1	SHOE—clutch	6			$\frac{7}{16}$ pitch—HOMELITE CHAIN—.063 gauge (optional)	
18	55225-1	KEY—clutch	2	31	HC-6258-L	17" CHAIN—w/kit	1
19	56238-A	COVER—clutch	1		HC-6266-L	21" CHAIN—w/kit	1
20	55036	WASHER—clutch retaining	1		HC-6276-L	25" CHAIN—w/kit	1
					HC-6287-L	30" CHAIN—w/kit	1

HOMELITE CHAIN SAW MODEL 909 D

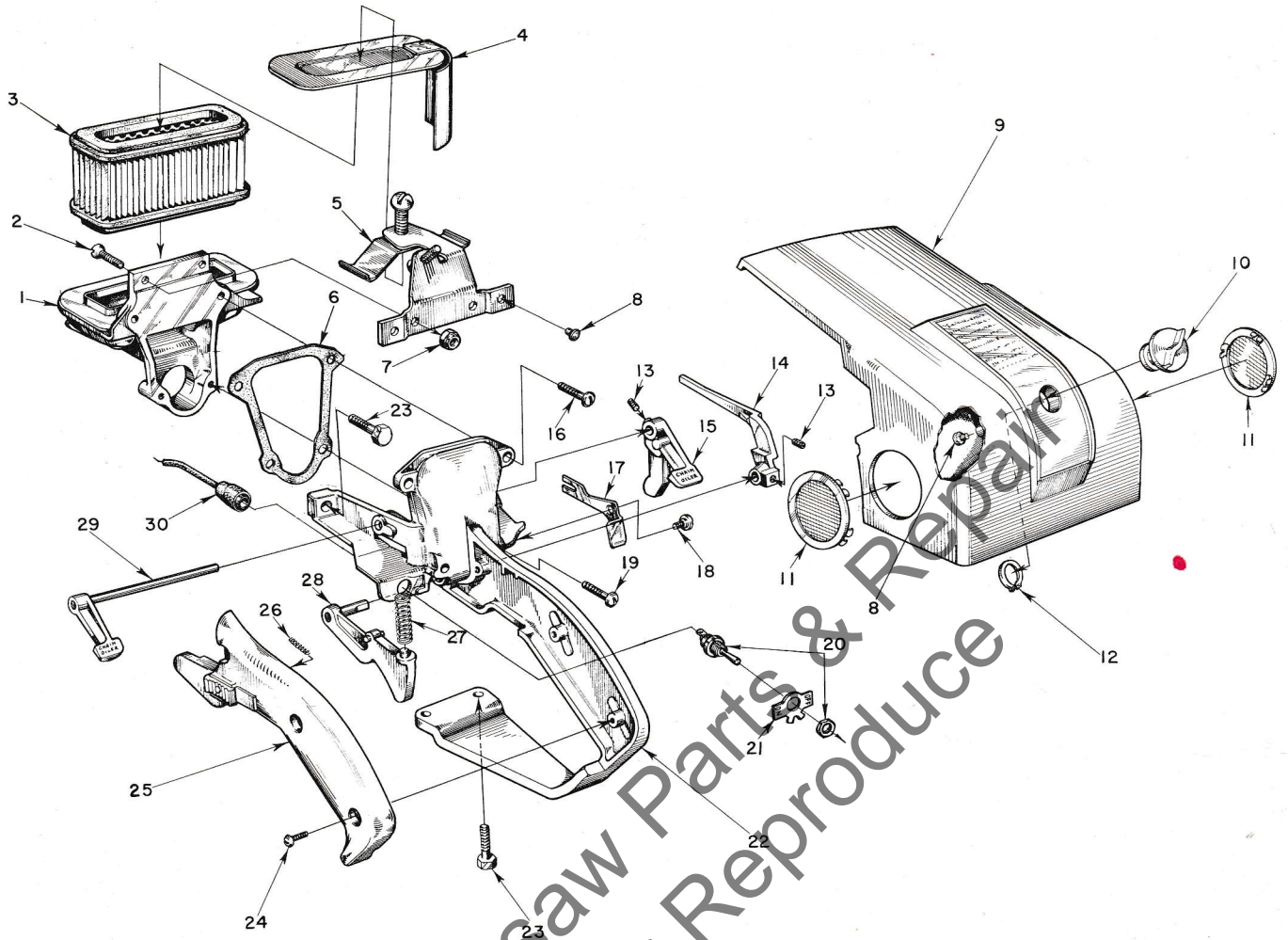


FIGURE 2 — ENGINE CONTROL PARTS

Index No.	Part No.	Description	No. Required
1	A-57714	ADAPTER—air filter	1
2	80035	SCREW—10-32 x 5/8 flat hd.	2
3	57599	ELEMENT—air filter	1
4	A-57727	CAP—air filter	1
5	A-57793	BRACKET—adapter w/spring and screws	1
6	56280	GASKET—air filter case	1
7	81109	NUT—10-32 flex-lock	2
8	56298	BUMPER—rubber	2
9	A-57156	SHROUD—cylinder, w/56298 bumpers	1
	56400	DECAL—"HOMELITE"	1
	57667	DECAL (909D)	1
	56363-B	DECAL—starting instructions	1
10	A-56521	NUT—mounting w/insert	1
11	74099-1	PLUG—button	2
12	56522	RING—snap	1
13	80353	SCREW—set, cup point	2
14	56105	ARM—throttle	1
15	56227	LEVER—oiler	1
16	80625	SCREW—10-32 x 1/2 pan hd.	2

Index No.	Part No.	Description	No. Required
17	56241	LEVER—choke	1
18	56242	SCREW—choke lever	1
19	80624	SCREW—10-32 x 1 pan hd.	2
20	A-57716	SWITCH—toggle	1
		Includes	
21	55879	PLATE—"on-off"	1
22	A-57724	HANDLE—throttle w/bushings	1
23	80573	SCREW—1/4-20 x 13/16 hex hd.	4
24	80560	SCREW—8-32 x 1/2 pan hd.	3
25	A-56345	COVER—grip	1
		Includes	
	AA-55282	LOCK—throttle	1
		Includes	
26	72970	SPRING	1
27	55045-A	SPRING—throttle trigger	1
28	A-56343	TRIGGER—throttle	1
29	A-56358	SHAFT & LEVER—oiler	1
30	A-57720	LEAD—ground (with terminals, sleeve & boot)	1

HOMELITE CHAIN SAW MODEL 909 D

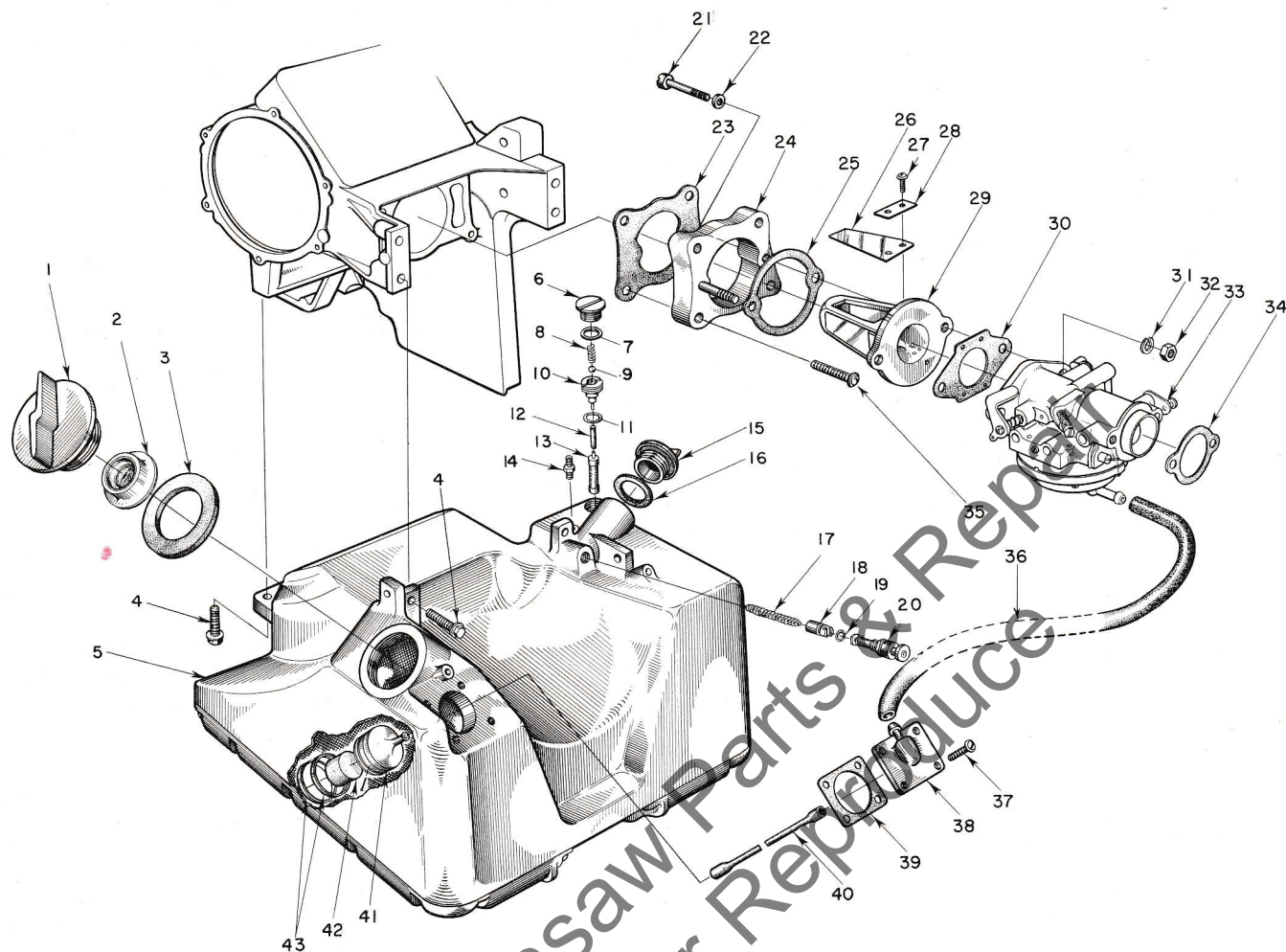


FIGURE 3 — FUEL INDUCTION SYSTEM

Index No.	Part No.	Description	No. Required	Index No.	Part No.	Description	No. Required
1	A-56907	CAP — fuel	1	22	25304	WASHER — fibre	2
		Includes		23	56279	GASKET — spacer	1
2	56865	VALVE — relief	1	24	56075-2	SPACER — reed adapter	1
3	56335	GASKET	1	25	55946	GASKET — reed adapter	1
4	80573	SCREW — 1/4-20 x 1 1/16 hex. hd.	4	26	55941	REED	4
5	A-56328	FUEL TANK	1	27	80658	SCREW — 4-40 x 3/16 pan hd.	8
6	AA-55167	CAP — oil supply line	1	28	55942	PLATE — reed	4
7	55107	GASKET	1	29	55932-2	ADAPTER — reed valve	1
8	55288-A	SPRING — check valve	1	30	55553-1	GASKET — carburetor	1
9	25527	BALL — check, 3/32 dia.	1	31	83009	WASHER — 1/4 lock	2
10	55109-A	SEAT — check valve	1	32	81013	NUT — 1/4-20 hex.	2
11	55110	GASKET	1	33	A-57806	CARBURETOR ASSEMBLY — Til. HL-119A	1
12	56262	SLEEVE — flexible, oil	1	34	56313	GASKET — air intake	1
13	AA-55259-A	PICK-UP — oil	1	35	80743	SCREW — 10-32 x 1 1/16 pan hd.	4
14	A-55824	VALVE — check	1	36	55680	FUEL LINE	1
15	A-56330	CAP — chain oil	1	37	80605	SCREW — 6-32 x 5/16 pan hd.	4
		Includes		38	A-56650	FITTING — outlet	1
16	72280	GASKET	1	39	56333	GASKET — outlet fitting	1
17	71762	SPRING — plunger	1	40	55805	SLEEVE — flexible	1
18	A-74406	TUBE — plunger	1	41	A-56200	STRAINER — fuel, w/brass nail	1
		Includes				Includes	
19	74388	"O" RING	1	42	74374	FILTER — felt	1
20	71764	BUTTON — plunger	1	43	56196	BUMPER — rubber	2
21	80161	SCREW — 1/4-20 x 1 1/8 fil. hd.	2				

HOMELITE CHAIN SAW MODEL 909 D

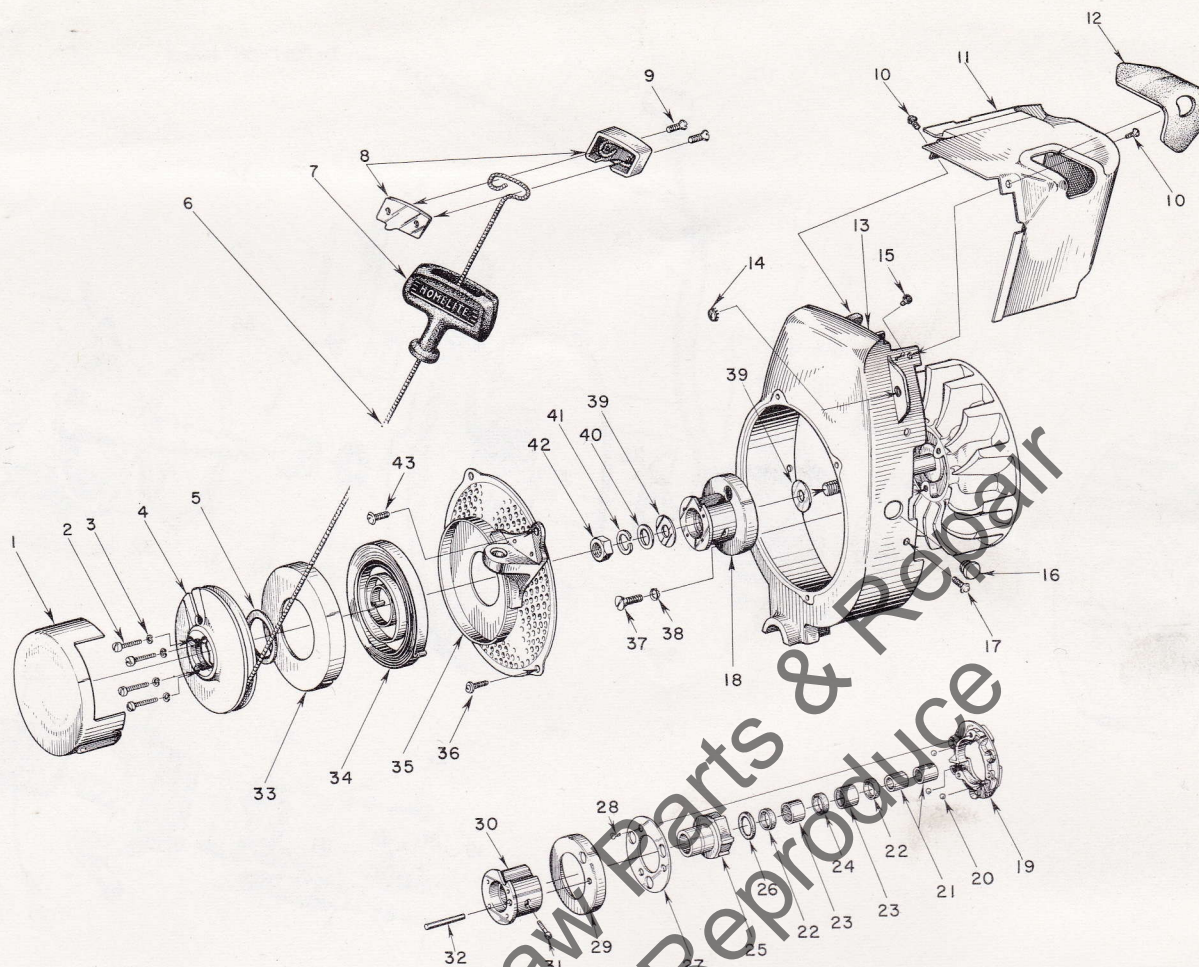


FIGURE 4 — STARTER PARTS

Index No.	Part No.	Description	No. Required	Index No.	Part No.	Description	No. Required
1	AA-73234-1	COVER—starter pulley	1	22	71597	SEAL—garlock	2
	57656	DECAL (909D)	1	23	71596	BEARING—needle	2
2	80475	SCREW—6-32 x 3/4 fil. hd.	4	24	71595	WICK—felt	1
3	83004	WASHER—lock #6	4	25	AA-73549	RATCHET	1
4	55597-2	PULLEY—starter	1			Includes	
5	71588	SHIM—pulley	as req'd	26	73525	WASHER—formica	1
6	55898	ROPE—starter	1	27	71570-B	RETAINER—ball	1
7	55937	GRIP—starter	1	28	80464	SCREW—5-40 x 5/16 flat hd.	3
8	A-56081	INSERT—grip	1	29	56896	CUP—sealing	1
		Includes		30	A-57098	HUB—ratchet	1
9	80619	SCREW—10-32 x 3/8 flat hd.	2			Includes	
10	80577	SCREW—8-32 x 3/8 pan hd.	2	31	72295-A	SCREW—ratchet hub	1
11	A-57155	SHIELD—cylinder w/56873-A cover	1	32	57065	PIN—spiral	1
12	56873-A	COVER—spark plug	1	33	71603	COVER—spring housing	1
13	A-56912	SHROUD—air	1	34	56497	SPRING—recoil	1
		Includes		35	A-56302	SCREEN & BRACKET	1
14	55681	PLUG—button	1			Includes	
15	56298	BUMPER—rubber	2	*A-56304	BRACKET & BUSHING	1	
16	56913	PLUG	1	36	80579	SCREW—10-32 x 3/8 pan hd.	3
17	80579	SCREW—10-32 x 3/8 pan hd.	5	37	80173	SCREW—1/4-20 x 5/8 flat hd.	3
18	A-56899	BALL DRIVE	1	38	83074	WASHER—1/4 countersunk, lock	3
		Includes index nos. 19 through 32		39	55652	WASHER—thrust	2
19	71563-C	PLATE—ball drive	1	40	84055	WASHER—7/16 flat, aluminum	1
20	30355-1	BALL—steel	3	41	83019	WASHER—7/16 lock	1
21	74221	RACE—inner	2	42	81110	NUT—7/16-20 hex-jam	1
	AA-72306-1	RATCHET BEARING	1	43	80576	SCREW—10-32 x 5/16 pan hd. (at bracket)...	1
		Includes					

*Assemble to screen with 85073 rivet.

Always furnish saw model and serial number when ordering parts

HOMELITE CHAIN SAW MODEL 909 D

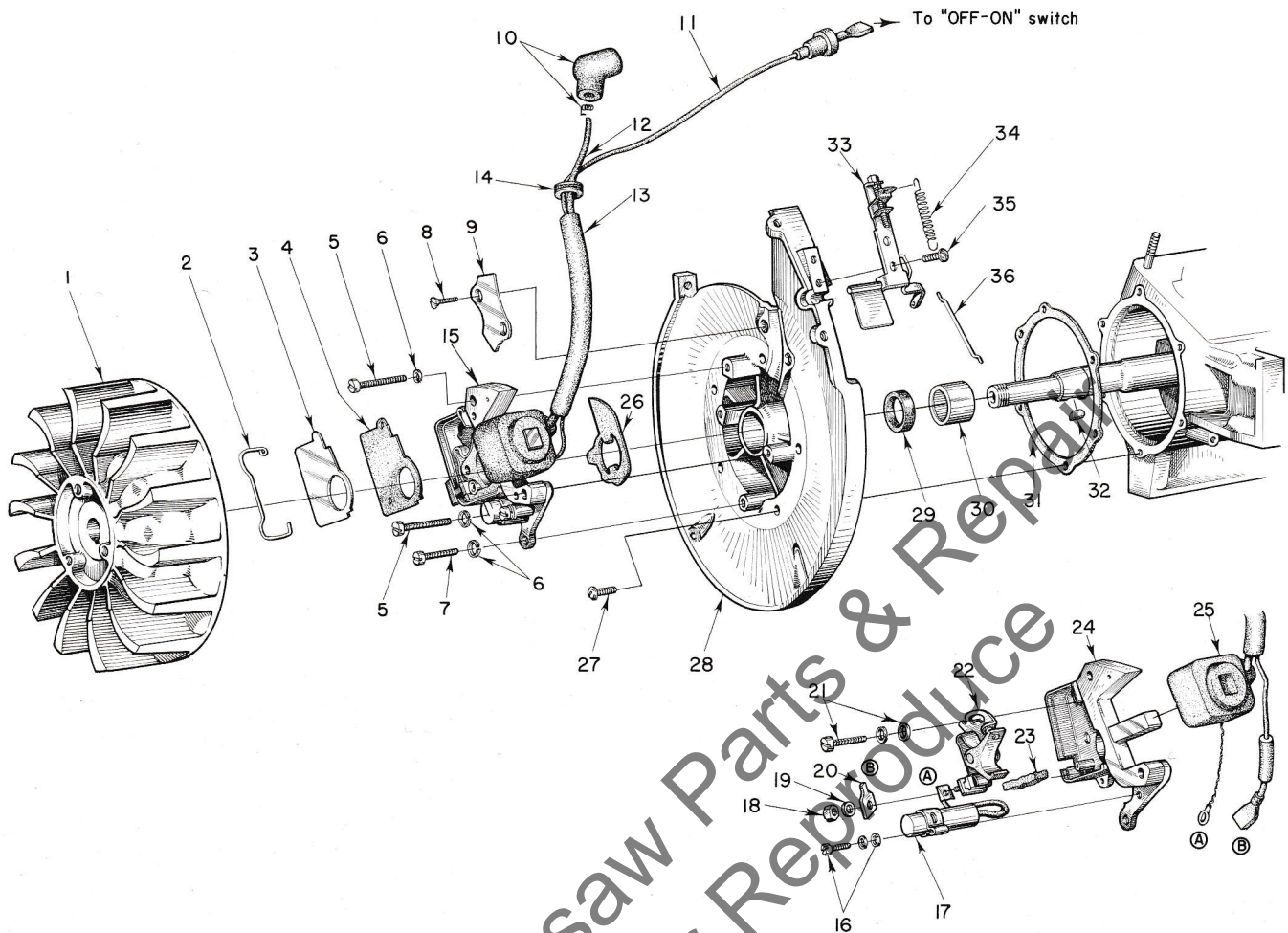


FIGURE 5 — IGNITION SYSTEM

Index No.	Part No.	Description	No. Required	Index No.	Part No.	Description	No. Required
1	56276	ROTOR — magneto	1	18	55982	NUT — terminal	1
2	55980	CLAMP — dust cover	1	19	55983	WASHER — terminal	1
3	55979	COVER — dust	1	20	57733	TAB — ground terminal	1
4	55978-2	GASKET — dust cover	1	21	57749	SCREW GROUP — point fastening	1
5	80660	SCREW — 10-24 x 7/8 fl. hd.	2	22	A-57745	SET OF POINTS — w/pivot pin	1
6	83046	WASHER — lock #10	3	23	55984	FELT — cam wiper	1
7	80595	SCREW — 10-24 x 1/2 fl. hd.	1	24	57744	BOX — breaker, w/core	1
8	80598	SCREW — 6-32 x 5/8 flat hd.	2	25	55986	COIL (with terminal)	1
9	56250	CLAMP — lead	1	26	56292-A	WASHER — sealing (felt)	1
10	A-55573	TERMINAL — "SPARK" cover and spring ..	1	27	80576	SCREW — 10-32 x 7/16 pan hd.	6
11	A-57720	LEAD — ground w/terminals, sleeves & cover	1	28	A-57845	BACK PLATE	1
		(also shown on fig. No. 2)				Includes	
12	55235-A	LEAD — high tension	1	29	56134	SEAL — garlock	1
13	56294-A	SLEEVE — insulating	1	30	56255	BEARING — needle	1
14	71671	GROMMET	1	31	56278	GASKET — back plate	1
15	*	BREAKER BOX	1	32	75078	KEY — rotor	1
		Includes items #16 thru #25		33	A-56272	GOVERNOR (complete)	1
16	57750	SCREW GROUP — condenser fastening	1	34	56247	SPRING — governor	1
17	55987	CONDENSER (with lead and terminal)	1	35	80629	SCREW — 8-32 x 5/16 pan hd.	2
				36	56246	ROD — governor (to throttle stop lever)	1

*Order individual parts

HOMELITE CHAIN SAW MODEL 909 D

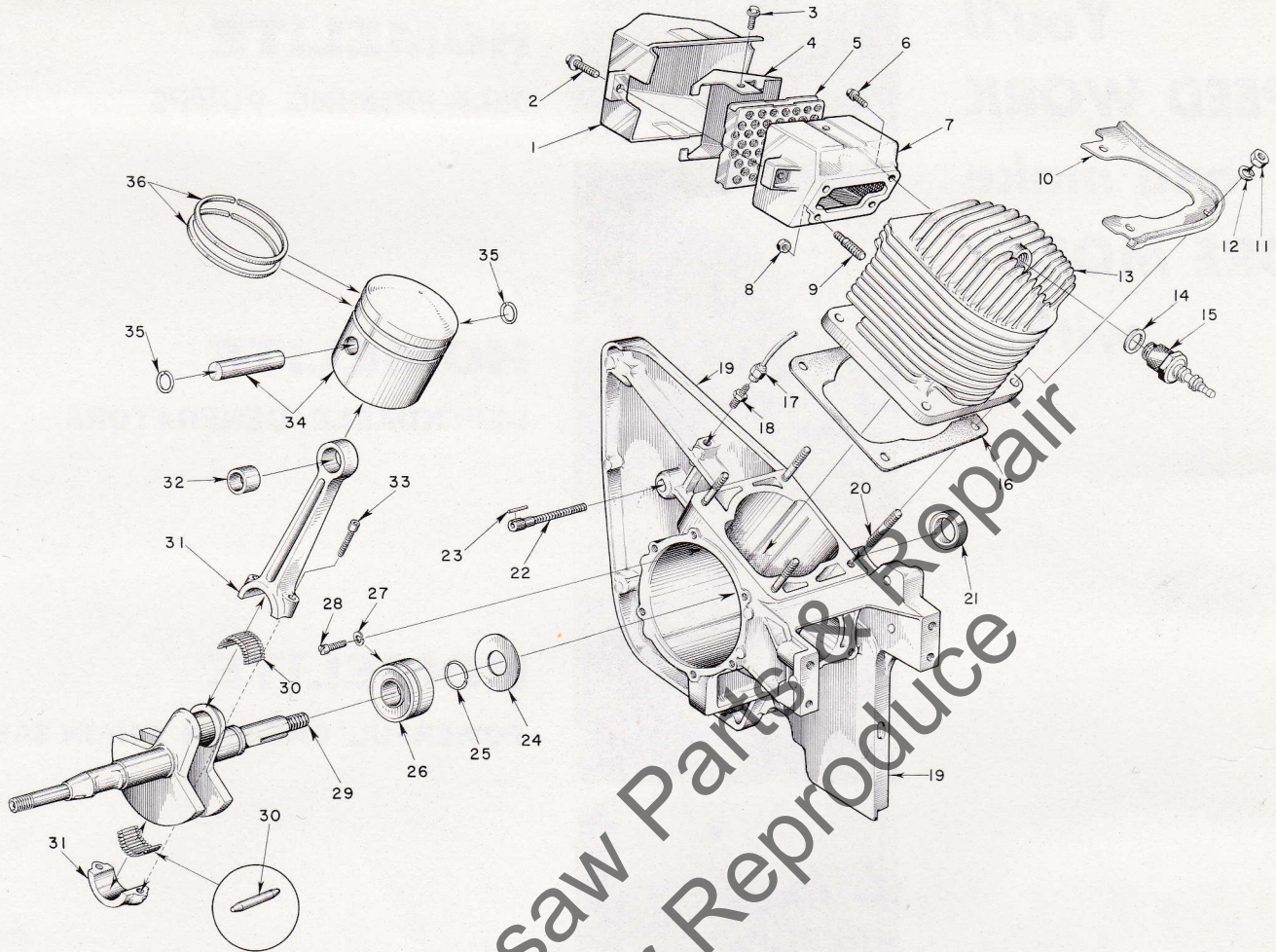


FIGURE 6 — ENGINE PARTS

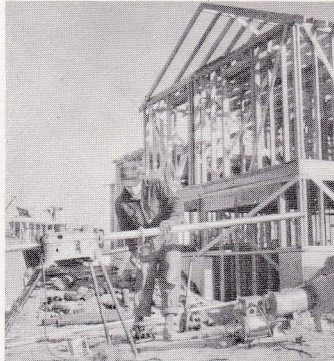
Index No.	Part No.	Description	No. Required
1	56795	DAMPER—heat	1
2	80677	SCREW— $\frac{1}{4}$ -20 x $\frac{11}{16}$ hex hd.	2
3	80825	SCREW— 10 -32 x $\frac{9}{16}$ hex hd.	2
4	57369	CAP—exhaust	1
5	A-57598	ELEMENT—muffer	1
6	80751	SCREW— 12 -24 x $\frac{11}{16}$ hex hd.	2
7	56794	BODY—muffer	1
8	81108	NUT— $\frac{1}{4}$ -20 flex-lock	2
9	57349	STUD—muffer to cylinder	2
10	A-56914	SHIELD—sawdust, cylinder	1
		Includes	
	56916	STRIPPING (cement to shield)	1
11	81065-2	NUT— $\frac{1}{4}$ -28 hex	4
12	83009	WASHER— $\frac{1}{4}$ lock	4
13	A-56874-A	CYLINDER	1
14	25038	GASKET (included with spark plug)	1
15	72858-2S	SPARK PLUG (Champion H 0-3)	1
16	56875	GASKET—cylinder	1
17	A-56336	LINE—chain oil	1
18	31733-1	ADAPTER—straight	1

Index No.	Part No.	Description	No. Required
19	A-57089	CRANKCASE (service)	1
		Includes	
	20	STUD—cylinder	4
	21	SEAL—garlock	1
	22	BOLT—guide bar	2
	23	PIN—spirol, guide bar bolt	2
	24	GASKET—crankcase sealing	1
	25	RING—snap	1
	26	BEARING—main	1
	27	WASHER—lock	2
	28	SCREW—bearing retaining	2
	29	CRANK SHAFT	1
	30	ROLLERS (set of 31 needles)	1
	31	ROD—connecting w/cap	1
		Includes	
	32	BEARING—piston pin	1
	33	SCREW— 10 -32 x $\frac{9}{16}$, allen	2
	34	PISTON & PIN	1
		Includes	
	35	RING—snap	2
	36	RING—piston	2

**You'll
SPEED WORK
and make
MORE MONEY
with...**



HOMELITE
SELF-PRIMING PUMPS



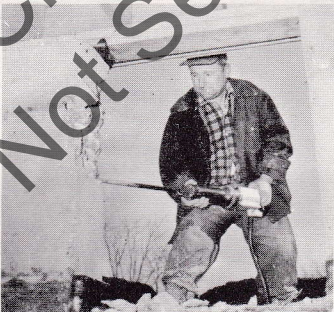
HOMELITE
DEPENDABLE GENERATORS



HOMELITE
POWERFUL ONE-MAN CHAIN SAWS



HOMELITE
ONE-MAN CONCRETE VIBRATORS



HOMELITE — BOSCH (Germany)
ELECTRIC BUILDER'S HAMMERS

All Powered By Famous HOMELITE Engines

Homelite's two-cycle gasoline engines are the most efficient and dependable units of their kind ever built. Their two-cycle design, developed to perfection by Homelite engineers over the past 35 years, gives maximum power for the least weight because power is produced at every piston down stroke. As an added advantage, this design requires fewer moving parts which means greater dependability and lower maintenance

HOMELITE
a division of Textron Inc.
PORT CHESTER, N. Y.