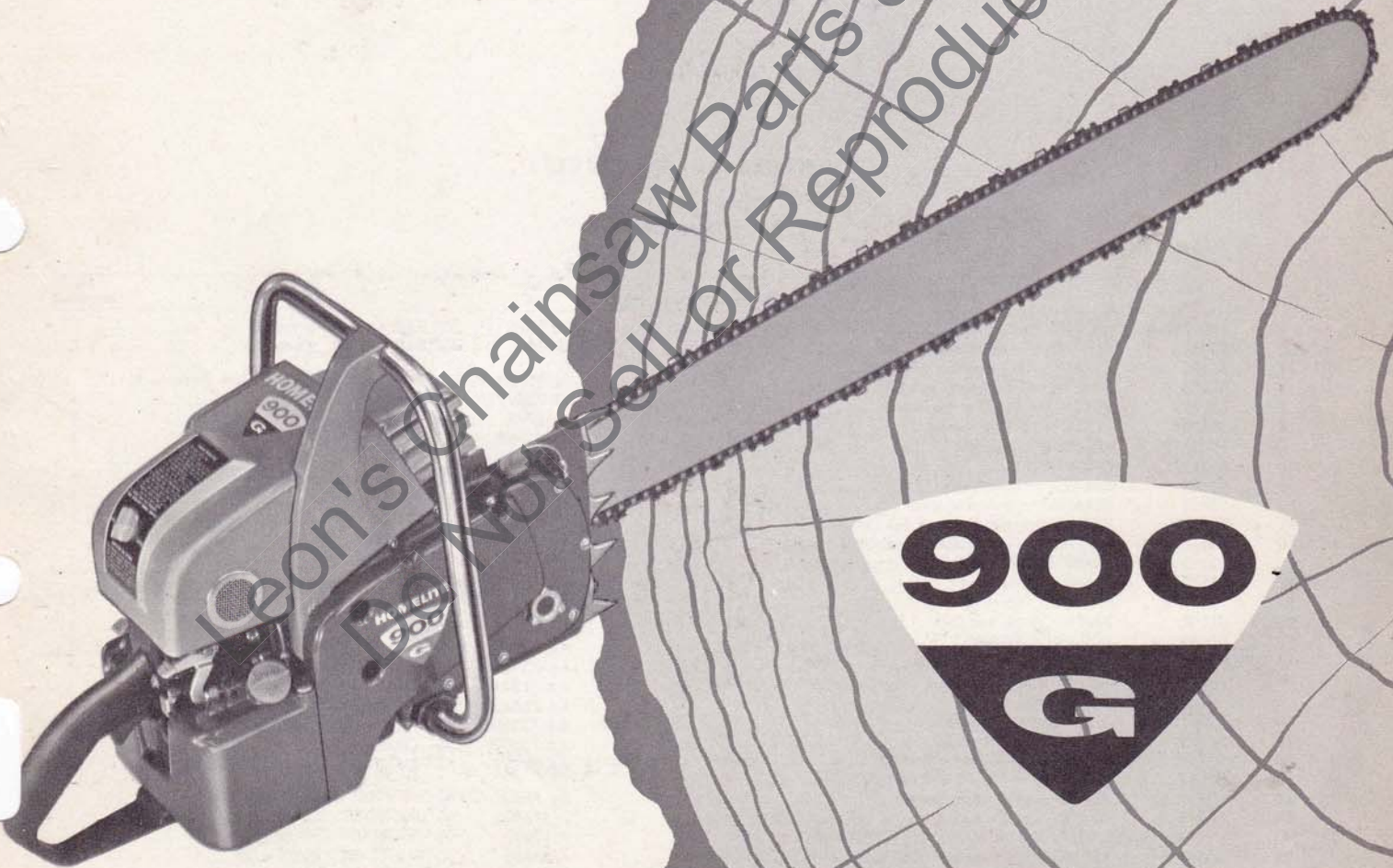


April 1960

HOMELITE CHAIN SAW



PARTS LIST

HOMELITE CHAIN SAW MODEL 900 G

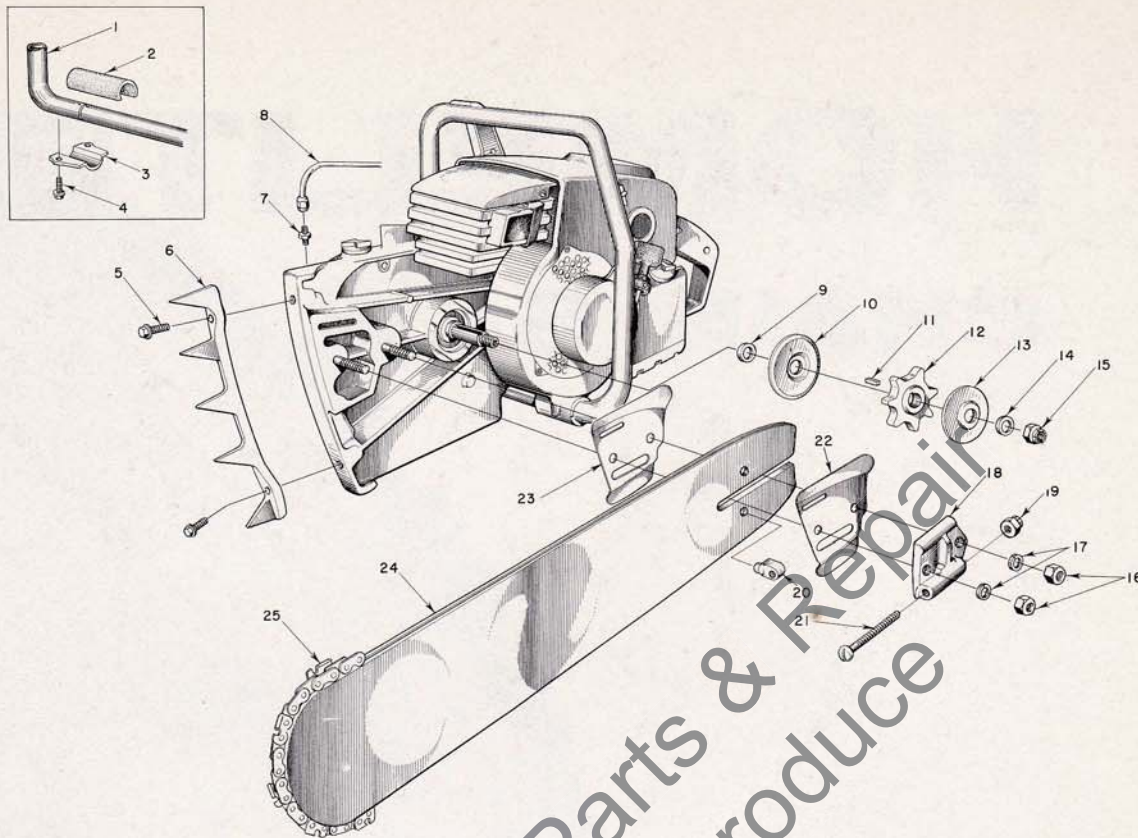


FIGURE 1 — SAW PARTS

APRIL 1960

Index No.	Part No.	Description	No. Required	Index No.	Part No.	Description	No. Required
1	A-56267-A	HANDLE BAR.....	1		55707-1	50" BAR — .063" gauge.....	1
2	56281	CUSHION — handle bar.....	2		55708-1	60" BAR — .063" gauge.....	1
3	56282	CLAMP — handle bar.....	2				
4	80676	SCREW — 12-24 x 5/8 hex hd.....	4				
5	80573	SCREW — 1/4-20 x 1 1/2 hex hd.....	2				
6	55103	PLATE — spiked bumper.....	1				
7	31733-1	ADAPTER — straight.....	1				
8	A-56578	OIL LINE.....	1				
9	56593	SPACER — sprocket.....	1				
10	73771	FLANGE — sprocket, inner.....	1				
11	73215	KEY — sprocket (3/16 sq. x 5/8).....	1				
12	73860-1	SPROCKET — 3/16 pitch standard, 7-tooth.....	1				
	73252-1	SPROCKET — 1/2 pitch optional, 8-tooth.....	1				
13	73253	FLANGE — sprocket, outer.....	1				
14	73254-A	SPACER — sprocket.....	1				
15	81101	NUT — 1/2-20 hex lock.....	1				
16	81089	NUT — 3/8-16 hex.....	2				
17	83018	WASHER — 3/8 lock.....	2				
	A-55591	ADJUSTING PLATE.....	1				
		Includes					
18	55551-B	PLATE — adjusting.....	1				
19	81123	NUT — hex lock.....	1				
20	55552	PIN — guide bar adjusting.....	1				
21	80617	SCREW — 3/16-18 x 2 rd. hd.....	1				
22	56957	PLATE — guide bar (outer).....	1				
23	56956	PLATE — guide bar (inner).....	1				
		HARD TRACK PLUS EXTRA HARD TIP GUIDE BARS					
24	A-55718	18" HOMELITE BAR — .063" gauge.....	1				
	A-55720	20" HOMELITE BAR — .063" gauge.....	1				
	A-55723	23" HOMELITE BAR — .063" gauge.....	1				
	55728	28" HOMELITE BAR — .063" gauge.....	1				
	55704-1A	33" BAR — .063" gauge.....	1				
	55705-1	38" BAR — .063" gauge.....	1				
	55706-1	44" BAR — .063" gauge.....	1				
				25	1/16 PITCH OREGON #4C CHIPPER CHAIN (standard)		
					AA-72977	18" CHAIN w/kit.....	1
					A-55742	20" CHAIN w/kit.....	1
					AA-72978	23" CHAIN w/kit.....	1
					AA-72979	28" CHAIN w/kit.....	1
					AA-72983	33" CHAIN w/kit.....	1
					AA-72981	38" CHAIN w/kit.....	1
					AA-72984	44" CHAIN w/kit.....	1
					AA-73564	50" CHAIN w/kit.....	1
					AA-73563	60" CHAIN w/kit.....	1
				25	1/2 PITCH OREGON #10C CHIPPER CHAIN (optional)		
					AA-73338	18" CHAIN w/kit.....	1
					A-55319	20" CHAIN w/kit.....	1
					AA-73340	23" CHAIN w/kit.....	1
					AA-73342	28" CHAIN w/kit.....	1
					AA-73344	33" CHAIN w/kit.....	1
					AA-73346	38" CHAIN w/kit.....	1
					AA-73350	44" CHAIN w/kit.....	1
					AA-73597	50" CHAIN w/kit.....	1
					AA-73598	60" CHAIN w/kit.....	1
				25	1/2 PITCH OREGON #32C MICROBIT CHAIN		
					A-52391	18" MICROBIT CHAIN w/kit.....	1
					A-52393	20" MICROBIT CHAIN w/kit.....	1
					A-52395	23" MICROBIT CHAIN w/kit.....	1
					A-52397	28" MICROBIT CHAIN w/kit.....	1
					A-52399	33" MICROBIT CHAIN w/kit.....	1
					A-52400	38" MICROBIT CHAIN w/kit.....	1
					A-52401	44" MICROBIT CHAIN w/kit.....	1
					A-52402	50" MICROBIT CHAIN w/kit.....	1
					A-52403	60" MICROBIT CHAIN w/kit.....	1

NOTE: Sizes listed above for bars and chain loops refer to usable length from saw bumper plate to nose of bar.

HOMELITE CHAIN SAW MODEL 900 G

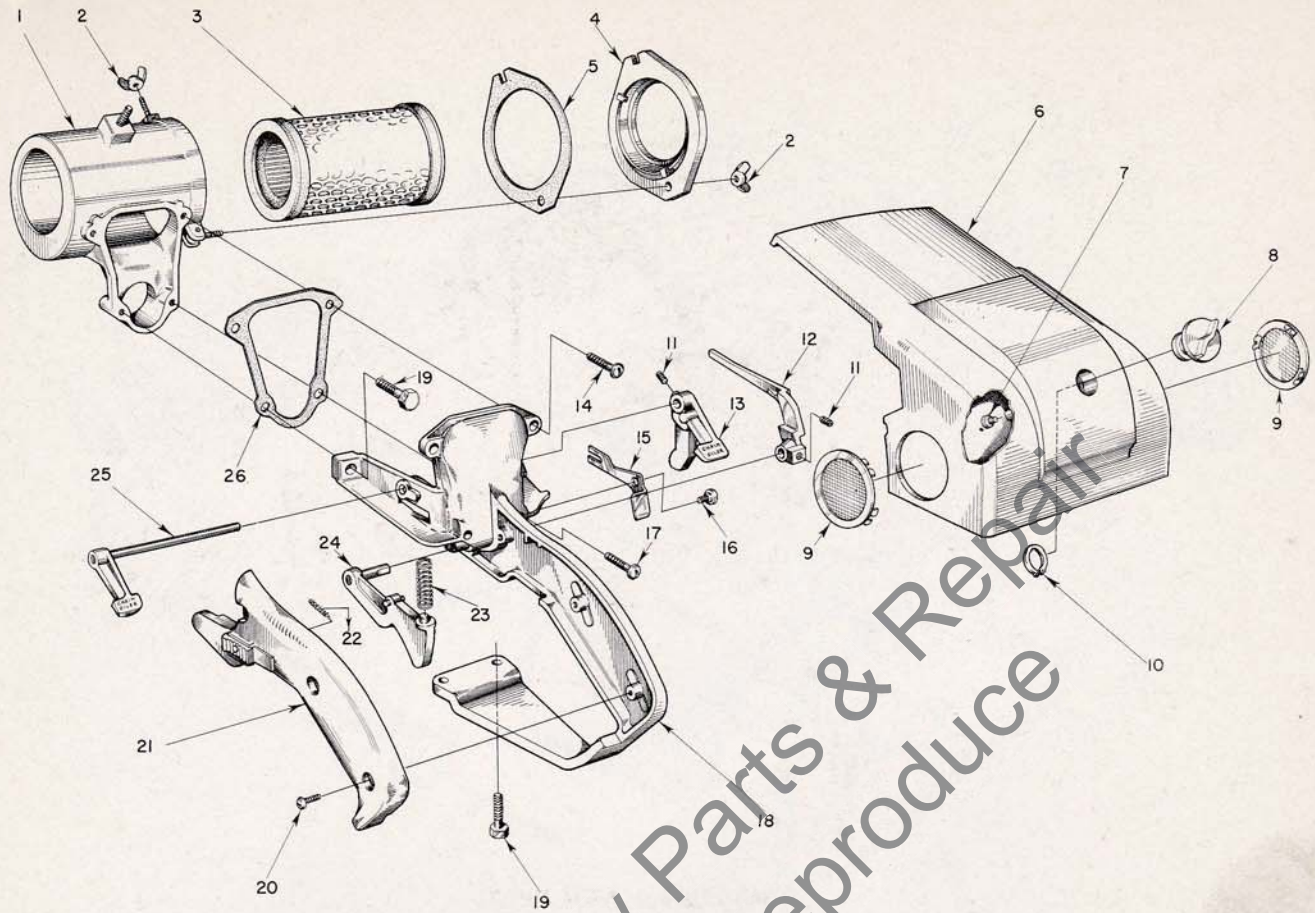


FIGURE 2 — ENGINE CONTROL PARTS

APRIL 1960

Index No.	Part No.	Description	No. Required	Index No.	Part No.	Description	No. Required
1	A-56347	CASE — air filter.....	1	13	56227	LEVER — oiler.....	1
2	81129	WING-NUT.....	2	14	80625	SCREW — 10-32 x 1/2 pan hd.....	2
3	A-57032	ELEMENT — air filter (WIX).....	1	15	56241	LEVER — choke.....	1
		Includes		16	56242	SCREW — choke lever.....	1
	57031	GASKET (cement to filter).....	2	17	80624	SCREW — 10-32 x 1 pan hd.....	2
4	A-56351	COVER — air filter case w/gasket.....	1	18	A-56342	HANDLE — throttle w/bushings.....	1
		Includes		19	80573	SCREW — 1/4-20 x 1 3/16 hex hd.....	4
5	56352	GASKET — (cement to filter cover).....	1	20	80560	SCREW — 8-32 x 1/2 pan hd.....	3
6	A-57156	SHROUD — cylinder, w/56298 bumper.....	1	21	A-56345	COVER — grip.....	1
7	56298	BUMPER — rubber.....	2			Includes	
8	A-56521	NUT — mounting w/insert.....	1	AA-55282	LOCK — throttle.....		1
9	74099-1	PLUG — button.....	2			Includes	
10	56522	RING — snap.....	1	22	72970	SPRING.....	1
	56400	DECAL — "HOMELITE".....	1	23	55045-A	SPRING — throttle trigger.....	1
	56885	DECAL (900 G).....	1	24	A-56343	TRIGGER — throttle.....	1
	56363-B	DECAL — starting instructions.....	1	25	A-56358	SHAFT & LEVER — oiler.....	1
11	80350	SCREW — set.....	2	26	56280	GASKET — filter case.....	1
12	56105	ARM — throttle.....	1				

HOMELITE CHAIN SAW MODEL 900 G

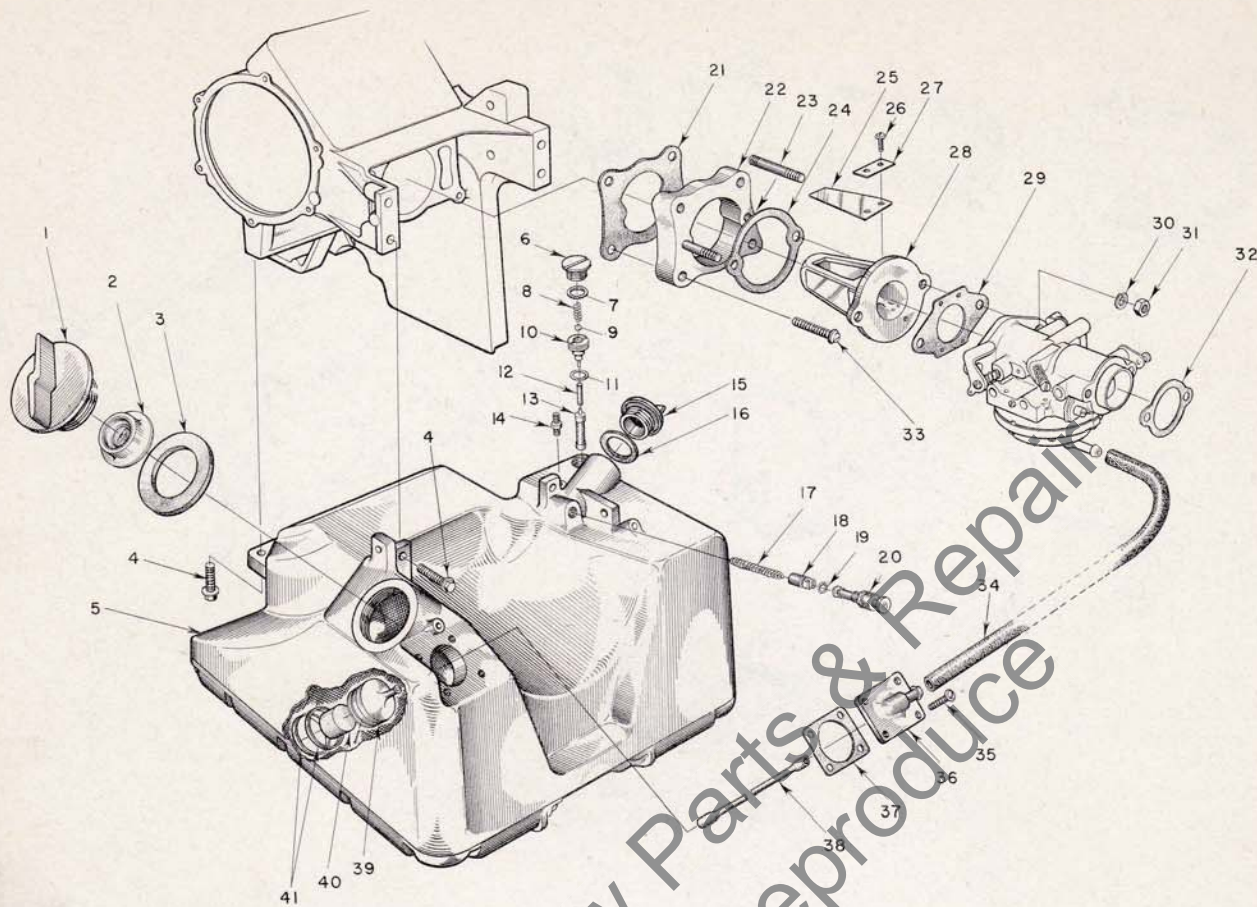


FIGURE 3 — FUEL INDUCTION SYSTEM

APRIL 1960

Index No.	Part No.	Description	No. Required	Index No.	Part No.	Description	No. Required
1	A-56907	CAP — fuel.....	1	20	71764	BUTTON — plunger.....	1
		Includes		21	56279	GASKET — spacer.....	1
2	56865	VALVE — relief.....	1	22	56075-1A	SPACER — reed adapter.....	1
3	56335	GASKET.....	1	23	55945	STUD.....	2
4	80573	SCREW — ¼-20 x 13/16 hex hd.....	4	24	55946	GASKET — reed adapter.....	1
5	A-56328	FUEL TANK.....	1	25	55941	REED.....	4
6	AA-55167	CAP — oil supply line.....	1	26	80658	SCREW — 4-40 x 3/16 pan hd.....	8
7	55107	GASKET.....	1	27	55942	PLATE — reed.....	4
8	55288-A	SPRING — check valve.....	1	28	55932-2	ADAPTER — reed valve.....	1
9	25527	BALL — check, 3/32 dia.....	1	29	55553-1	GASKET — carburetor.....	1
10	55109-A	SEAT — check valve.....	1	30	83009	WASHER — ¼ lock.....	2
11	55110	GASKET.....	1	31	81013	NUT — ¼-20 hex.....	2
12	56262	SLEEVE — flexible, oil.....	1	32	56313	GASKET — air intake.....	1
13	AA-55259-A	PICK-UP — oil.....	1	33	80743	SCREW — 10-32 x 1 1/16 pan hd.....	4
14	A-55824	VALVE — check.....	1	34	56326	FUEL LINE.....	1
15	A-56330	CAP — chain oil.....	1	35	80605	SCREW — 6-32 x 3/16 pan hd.....	4
		Includes		36	A-56650	FITTING — outlet.....	1
16	72280	GASKET.....	1	37	56333	GASKET — outlet fitting.....	1
17	71762	SPRING — plunger.....	1	38	55805	SLEEVE — flexible.....	1
18	A-74406	TUBE — plunger.....	1	39	A-56200	STRAINER — fuel, w/brass nail.....	1
		Includes				Includes	
19	74388	"O" RING.....	1	40	74374	FILTER — felt.....	1
				41	56196	BUMPER — rubber.....	2

HOMELITE CHAIN SAW MODEL 900 G

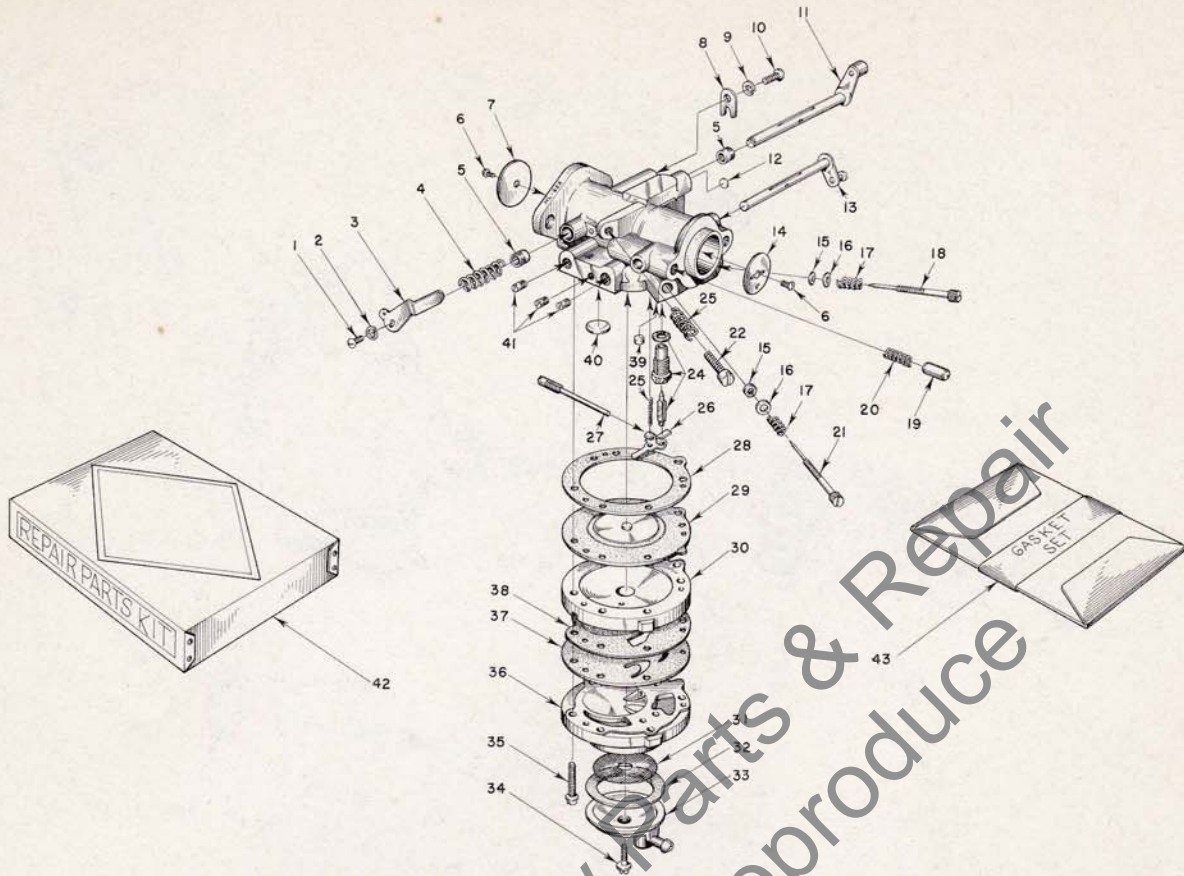


FIGURE 4 — TILLOTSON CARBURETOR

APRIL 1960

Index No.	Part No.	Description	No. Required	Index No.	Part No.	Description	No. Required
	A-56308	CARBURETOR — Tillotson	1	22	*71509	SCREW — idle stop	1
		Includes		23	*28064	SPRING — idle stop screw	1
1	*71521	SCREW — 4-36 x 1/2 rd. hd.	1	24	*A-55761	INLET NEEDLE & SEAT	1
2	*83008	WASHER — #4 lock	1			Includes	
3	56224	LEVER — throttle stop	1		55344	GASKET — inlet seat	1
4	*56630	SPRING — throttle friction	1	25	*55759	SPRING — control lever	1
5	72812	BUSHING — throttle shaft	2	26	*55747	LEVER — inlet control	1
6	*80012	SCREW — shutter	2	27	*A-55762	PIN — inlet lever fulcrum	1
7	75532	SHUTTER — throttle	1	28	*55754	GASKET — main diaphragm	1
8	73086	CLIP — throttle shaft	1	29	*A-55760	DIAPHRAGM — main	1
9	83000	WASHER — #8 lock	1	30	55749	COVER — main diaphragm	1
10	73088	SCREW — 8-32 x 5/16 flat hd.	1	31	*55752	SCREEN — fuel strainer	1
11	A-56641	SHAFT & LEVER — throttle	1	32	*55751	GASKET — pump strainer	1
12	56642	PLUG — welch, 3/16 dia.	1	33	55750	COVER — fuel pump	1
13	A-56639	SHAFT & LEVER — choke	1	34	*55756	SCREW — pump cover retaining	1
14	73263	SHUTTER — choke	1	35	55316	SCREW — body, with lockwasher	6
15	*75733	PACKING — adjustment screw	2	36	55748	BODY — fuel pump	1
16	*75735	WASHER — adjustment screw	2	37	*55753	DIAPHRAGM — fuel pump	1
17	*73075	SPRING — adjustment screw	2	38	55881	GASKET — pump diaphragm	1
18	*56644	SCREW — main adjustment	1	39	*55763	PLUG — channel	1
19	71494	PIN — choke friction	1	40	*30818	PLUG — 3/8 dia. welch	1
20	73264	SPRING — choke friction	1	41	73067	PLUG — 8-32 headless	3
21	*56627	SCREW — idle adjustment	1	42	56649	REPAIR PARTS (Kit #RK-402)	1
				43	*77342	GASKET SET (GS-145)	1

*Included in Repair Parts Kit RK-402.

Always furnish saw model and serial number when ordering parts

HOMELITE CHAIN SAW MODEL 900 G

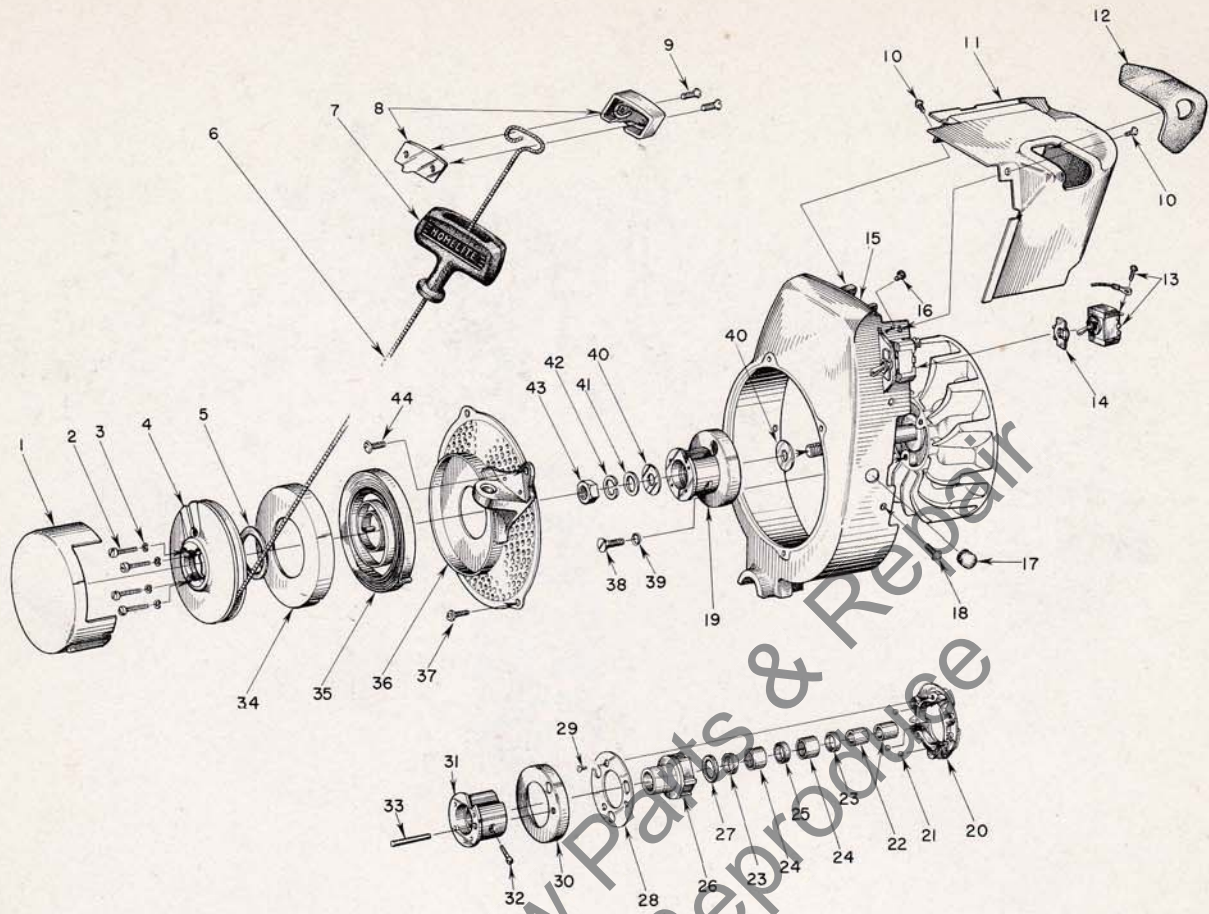


FIGURE 5 — STARTER PARTS

APRIL 1960

Index No.	Part No.	Description	No. Required	Index No.	Part No.	Description	No. Required
1	AA-73234-1	COVER — starter pulley	1			Includes	
	56864	DECAL (900 G)	1	23	71597	SEAL — garlock	2
2	80475	SCREW — 6-32 x 3/4 fl. hd.	4	24	71596	BEARING — needle	2
3	83004	WASHER — lock, #6	4	25	71595	WICK — felt	1
4	55597-2	PULLEY — starter	1	26	AA-73549	RATCHET	1
5	71588	SHIM — pulley	as req.			Includes	
6	55898	ROPE — starter	1	27	73525	WASHER — formica	1
7	55937	GRIP — starter	1	28	71570-B	RETAINER — ball	1
8	A-56081	INSERT — grip	1	29	80464	SCREW — 5-40 x 3/16 flat hd.	3
		Includes		30	56896	CUP — sealing	1
9	80619	SCREW — 10-32 x 7/8 flat hd.	2	31	A-57098	HUB — ratchet	1
10	80577	SCREW — 8-32 x 3/8 pan hd.	2			Includes	
11	A-57155	SHIELD — cylinder, w/56873-A cover	1	32	72295-A	SCREW — ratchet hub	1
12	56873-A	COVER — spark plug	1	33	57065	PIN — Spirol	1
13	A-55877	SWITCH — toggle	1	34	71603	COVER — spring housing	1
14	72085-A	PLATE — indicating (on-off)	1	35	56497	SPRING — recoil	1
15	A-56912	SHROUD — air	1	36	A-56302	SCREEN & BRACKET	1
		Includes				Includes	
16	56298	BUMPER — rubber	2		* A-56304	BRACKET & BUSHING	1
17	56913	PLUG	1	37	80579	SCREW — 10-32 x 3/8 pan hd.	3
18	80579	SCREW — 10-32 x 3/8 pan hd.	5	38	80173	SCREW — 1/4-20 x 5/8 flat hd.	3
19	A-56899	BALL DRIVE	1	39	83074	WASHER — 1/4 countersunk, lock	3
		Includes index nos. 20-33		40	55652	WASHER — thrust	2
20	71563-C	PLATE — ball drive	1	41	84055	WASHER — 7/16 flat, aluminum	1
21	30355-1	BALL — steel	3	42	83019	WASHER — 7/16 lock	1
22	74221	RACE — inner	2	43	81110	NUT — 7/16-20 hex-jam	1
	AA-72306-1	RATCHET & BEARING	1	44	80576	SCREW — 10-32 x 9/16 pan hd. (at bracket)	1

*Assemble to screen with 85073 rivet

HOMELITE CHAIN SAW MODEL 900 G

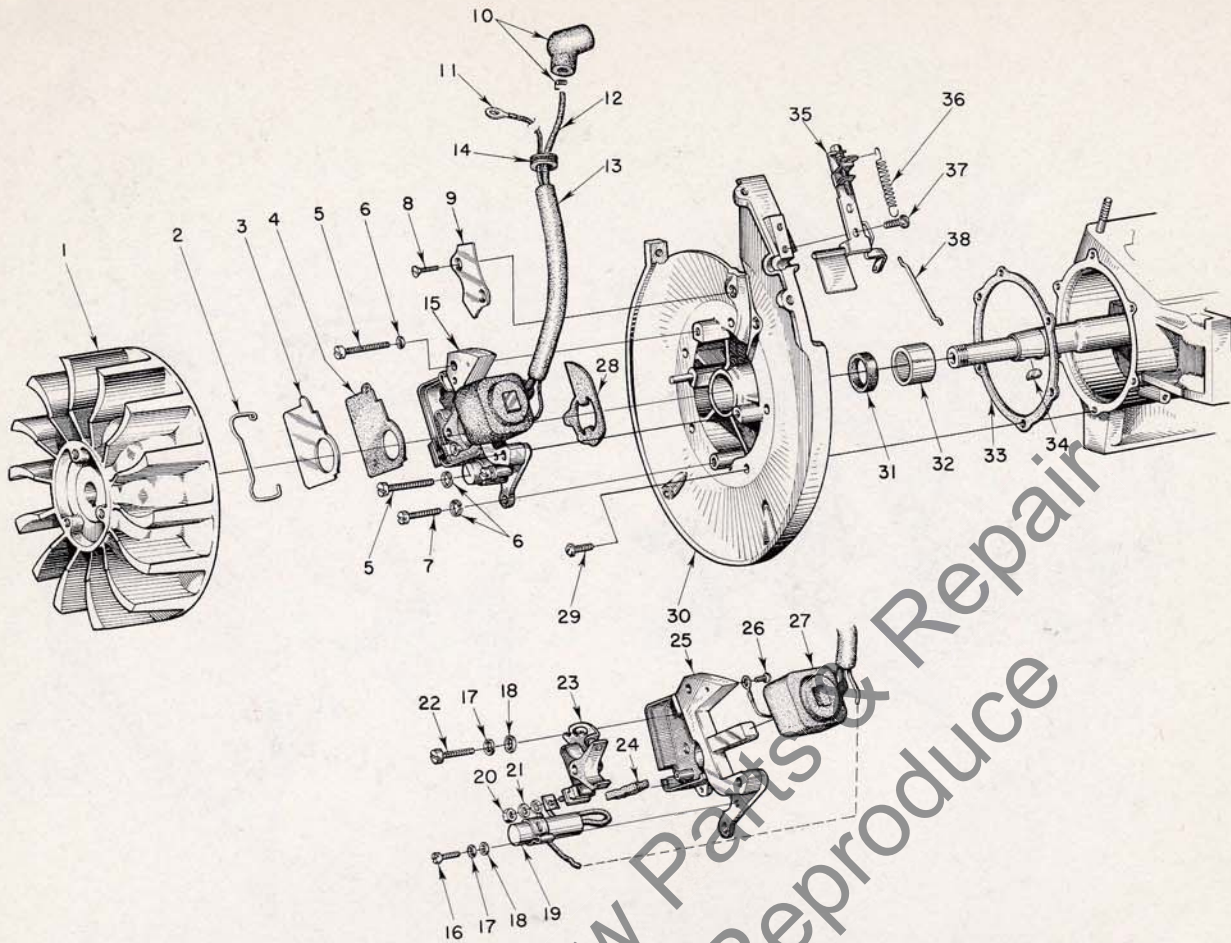


FIGURE 6 — IGNITION SYSTEM

APRIL 1960

Index No.	Part No.	Description	No. Required	Index No.	Part No.	Description	No. Required
1	56276	ROTOR — magneto.....	1	20	55982	NUT — terminal.....	1
2	55980	CLAMP — dust cover.....	1	21	55983	WASHER — terminal.....	1
3	55979	COVER — dust.....	1	22	55985	SCREW — breaker fastening.....	1
4	55978-2	GASKET — dust cover.....	1	23	A-55971	SET OF POINTS.....	1
5	80660	SCREW — 10-24 x 7/8 fl. hd.....	2	24	55984	FELT — cam wiper.....	1
6	83046	WASHER — lock #10.....	3	25	56293	BOX — breaker, w/core.....	1
7	80595	SCREW — 10-24 x 1/2 fl. hd.....	1	26	55977	SCREW — coil ground lead.....	1
8	80598	SCREW — 6-32 x 3/16 flat hd.....	2	27	55986	COIL (with terminals).....	1
9	56250	CLAMP — lead.....	1	28	56292	WASHER — sealing (felt).....	1
10	A-55373	TERMINAL — "Sparky" cover and spring.....	1	29	80576	SCREW — 10-32 x 3/16 pan hd.....	6
11	56900	LEAD — ground.....	1	30	A-56648-A	BACK PLATE w/pivot post.....	1
12	55235-A	LEAD — high tension.....	1			Includes	
13	56294-A	SLEEVE — insulating.....	1	31	56134	SEAL — garlock.....	1
14	71671	GROMMET.....	1	32	56255	BEARING — needle.....	1
15	*	BREAKER BOX.....	1	33	56278	GASKET — back plate.....	1
		Includes items #16 thru #27		34	75078	KEY — rotor.....	1
16	55988	SCREW — condenser fastening.....	1	35	A-56272	GOVERNOR (complete).....	1
17	83060	WASHER — lock.....	2	36	56247	SPRING — governor.....	1
18	84048	WASHER — flat.....	2	37	80629	SCREW — 8-32 x 3/16 pan hd.....	2
19	55987	CONDENSER (with lead and terminal).....	1	38	56246	ROD — governor (to throttle stop lever).....	1

*Order Individual Parts

Always furnish saw model and serial number when ordering parts

HOMELITE CHAIN SAW MODEL 900 G

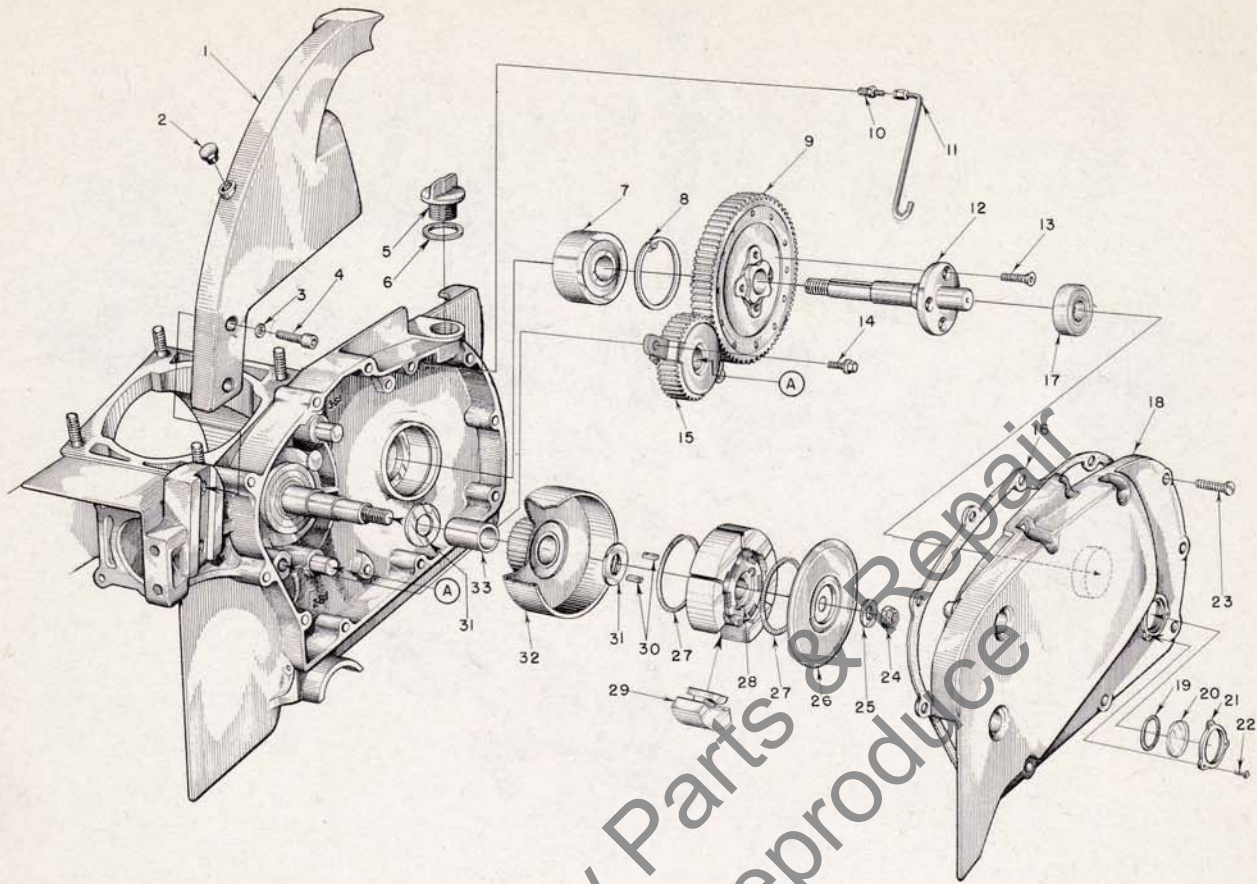


FIGURE 7 — TRANSMISSION PARTS

APRIL 1960

Index No.	Part No.	Description	No. Required	Index No.	Part No.	Description	No. Required
1	A-56360	PLATE — handle bar mounting	1	19	55100	Includes "O" RING	1
2	56298	BUMPER — rubber	2	20	55099-1	WINDOW — inspection	1
3	56628	WASHER — 5/16-18 flat	2	21	55098	PLATE — window	1
4	80671	SCREW — 5/16-18 x 1 1/8 socket hd.	3	22	80548	SCREW — binder hd. (self-tap)	3
5	A-56580	CAP — oil filler	1	23	56884	DECAL (900 G)	1
6	56607	GASKET — filler cap	1	24	80583	SCREW — 10-32 x 3/4 pan hd.	11
7	56219-S	BEARING — ball (double row)	1	25	81116	NUT — 3/8-24 hex lock	1
8	28922	RING — snap	1	26	55036	WASHER — clutch retaining	1
9	A-56596-A	DRIVEN GEAR — 71 tooth (2.84:1 std. ratio)	1	27	55126-A	COVER — clutch	1
	A-56588-A	DRIVEN GEAR — 75 tooth (3.57:1 opt. ratio)	1	28	55123-A	SPRING — clutch	2
10	31733-1	ADAPTER — straight	1	29	55075-3	SPIDER — clutch	1
11	A-56606	LINE — crankcase vent	1	30	A-55692	SHOE — clutch	6
12	56585	SHAFT — sprocket	1	31	55225-1	KEY — clutch	2
13	80659	SCREW — 12-28 x 1/2 flat hd. Allen	4	32	56132	WASHER — thrust	2
14	80581	SCREW — 1/4-20 x 5/8 hex hd.	2		A-56574	DRIVE GEAR & DRUM — 25 tooth (Standard 2.84:1 ratio)	1
15	A-56581-A	IDLER (gear & cage ass'y.)	1		A-56587-A	DRIVE GEAR & DRUM — 21 tooth (Optional 3.57:1 ratio)	1
16	56576	GASKET — gear case cover	1	33	56603	BEARING — bronze	1
17	72328-S	BEARING — ball (outboard spkt. support)	1				
18	A-56699	COVER — drive case	1				

HOMELITE CHAIN SAW MODEL 900 G

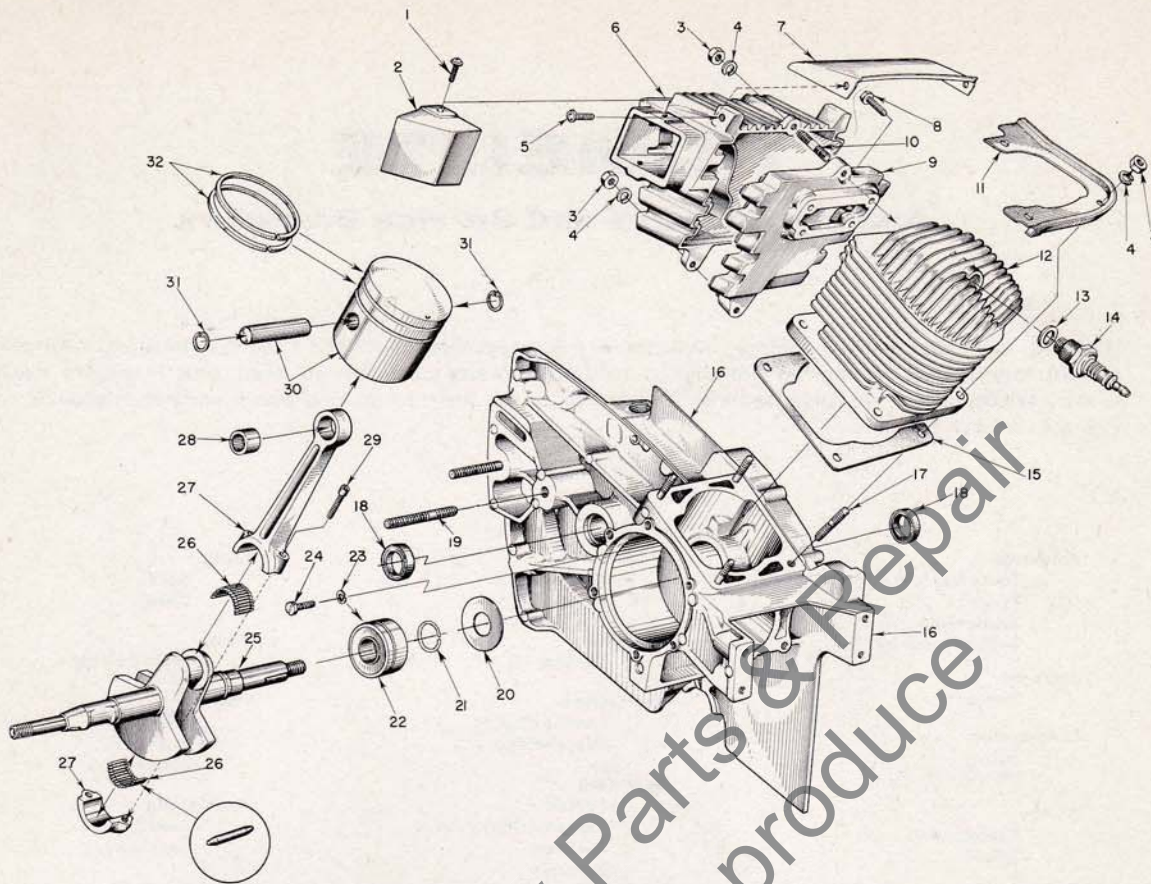


FIGURE 8 — ENGINE PARTS

APRIL 1960

Index No.	Part No.	Description	No. Required	Index No.	Part No.	Description	No. Required
1	80579	SCREW — 10-32 x 3/8 pan hd.	2			Includes	
2	56691-A	CAP — muffler	1	18	56256	SEAL — garlock	1
3	81065-2	NUT — 1/4-28 hex.	6	19	57030	STUD — guide bar	2
4	83009	WASHER — 1/4, lock	6	20	56258	GASKET — crankcase sealing	1
5	80572	SCREW — 10-32 x 3/8 pan hd.	2	21	56259	RING — snap	1
6	56164-A	BODY — muffler	1	22	56261-S	BEARING — main	1
7	56582-A	SHIELD — muffler	1	23	83061	WASHER — lock	2
8	80751	SCREW — 12-24 x 1 1/8 hex. hd.	4	24	19238-A	SCREW — bearing retaining	2
9	56163-A	ADAPTER — muffler	1	25	56056-A	CRANKSHAFT	1
		Includes		26	AA-72206	ROLLERS (set of 31 needles)	1
10	56470	STUD	2	27	A-56287	ROD — connecting, w/cap	1
11	A-56914	SHIELD — sawdust, cylinder	1			Includes	
		Includes		28	71167	BEARING — piston pin	1
	56916	STRIPPING (cemented to shield)	1	29	80492	SCREW — 10-32 x 1/2 sock't. hd.	2
12	A-56874	CYLINDER	1	30	A-57090	PISTON & PIN	1
13	25038	GASKET (included with spark plug)	1			Includes	
14	72858-2S	SPARK PLUG (Champion HO-3)	1	31	56290	RING — snap	2
15	56875	GASKET — cylinder	1	32	56828	RING — piston	2
16	A-57091	CRANKCASE (service)	1				
17	56470	STUD — cylinder	4				

Always furnish saw model and serial number when ordering parts

HOMELITE

Authorized Sales and Service Branches

Homelite sales and service factory branches are located throughout the country. Field representatives and factory-trained servicemen are always available, ready and able to keep your Homelites running in top performance at all times. See the "Yellow Pages" for the address and phone number of your nearest Homelite Branch office.

California Alhambra (Los Angeles area) Fresno Sacramento S. San Francisco	Missouri Kansas City St. Louis	Texas Dallas Lufkin
Colorado Denver	Nebraska Omaha	Utah North Salt Lake
Connecticut Byram Hartford	New Jersey North Arlington Woodbridge	Virginia Arlington Richmond Roanoke
Florida Jacksonville Miami	New York Buffalo Latham (Albany area) Rochester Syracuse	Washington Seattle Spokane
Georgia Atlanta	North Carolina Charlotte Raleigh	West Virginia Charleston Clarksburg
Illinois Bloomington Springfield Stone Park (Chicago area)	Ohio Cincinnati Cleveland Toledo	Wisconsin Milwaukee
Indiana Indianapolis	Oklahoma Oklahoma City	DOMINION OF CANADA TERRY MACHINERY CO., LTD.
Louisiana Bossier City Metairie	Oregon Portland	Quebec Montreal Quebec City
Maine Orono	Pennsylvania Altoona Erie Harrisburg Hazleton Malvern Philadelphia Pittsburgh	Alberta Edmonton
Maryland Baltimore	Tennessee Knoxville Memphis	British Columbia Vancouver
Massachusetts Allston (Boston area)		New Brunswick Moncton
Michigan Detroit Grand Rapids		Ontario Ottawa Toronto
Minnesota St. Paul		

HOMELITE
a division of **Textron Inc.**
PORT CHESTER, N. Y.