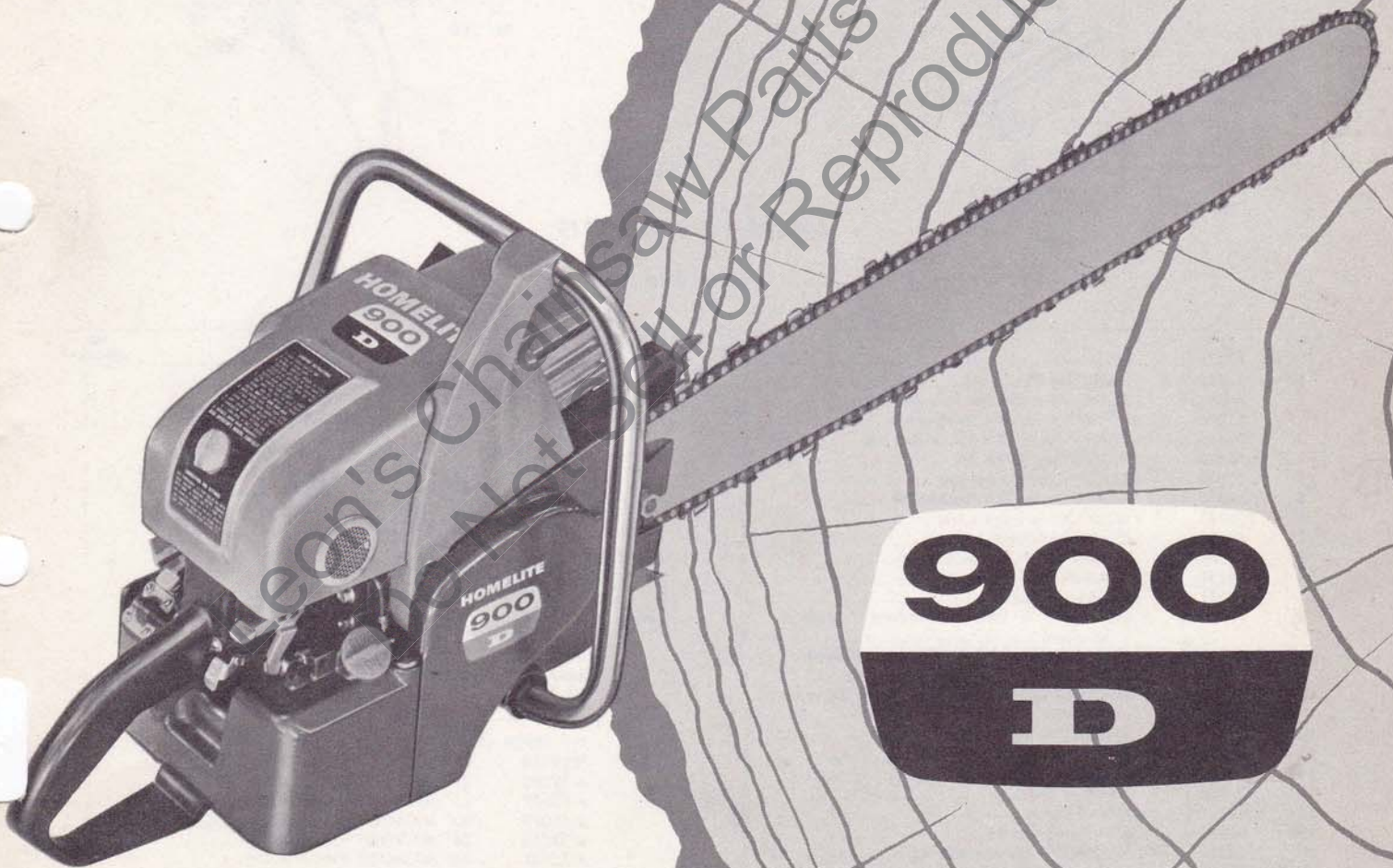


April 1960

HOMELITE CHAIN SAW



PARTS LIST

HOMELITE CHAIN SAW MODEL 900 D

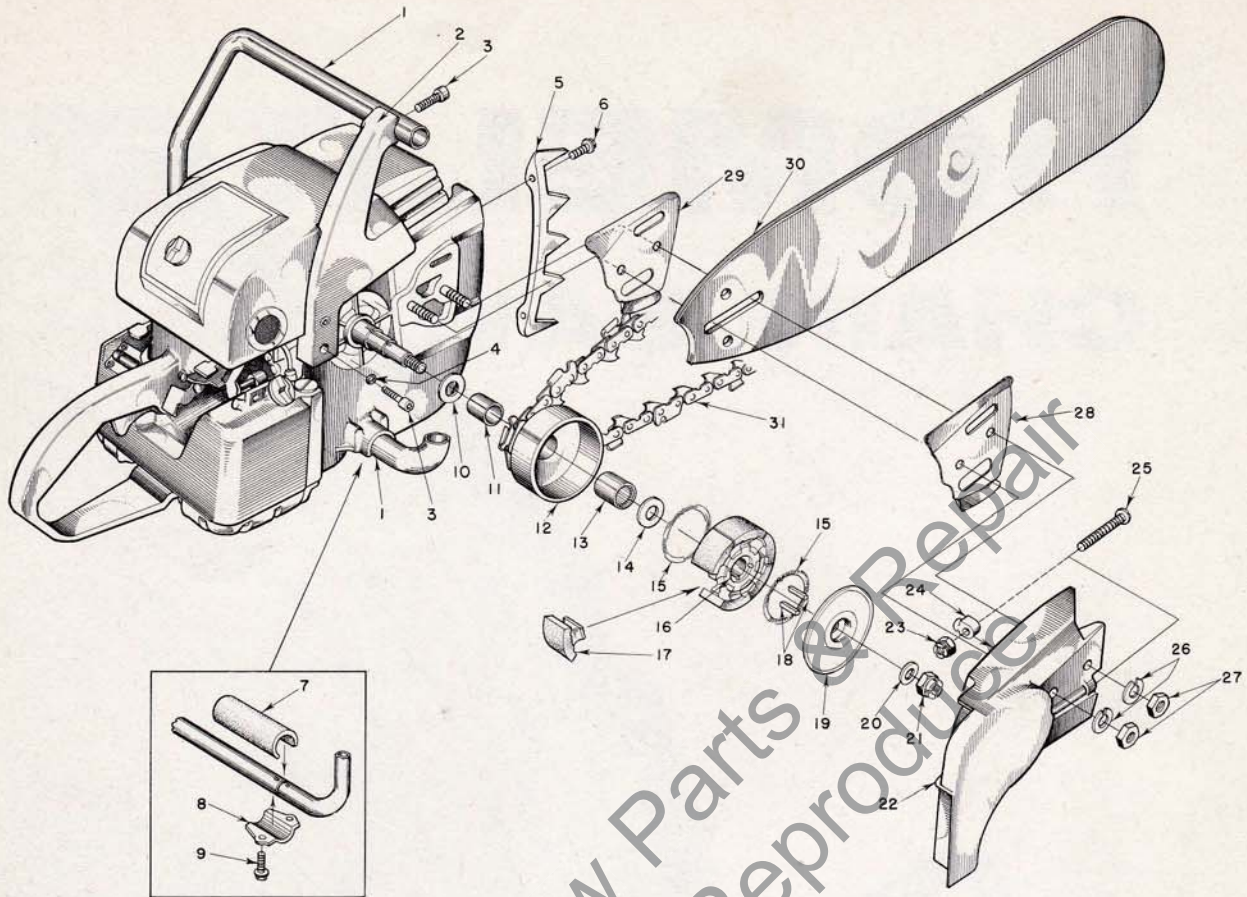


FIGURE 1 — SAW PARTS

APRIL 1960

Index No.	Part No.	Description	No. Required	Index No.	Part No.	Description	No. Required
1	A-56267-A	HANDLE BAR	1	27	81019	NUT — 3/8-16 hex	2
2	A-56360	PLATE — handle bar mounting	1	28	56872	PLATE — guide bar (outer)	1
	56298	BUMPER — rubber (not shown)	2	29	56871	PLATE — guide bar (inner)	1
3	80671	SCREW — 3/16-18 x 1 1/2 socket hd.	3			HARD TRACK PLUS EXTRA HARD TIP GUIDE BARS	
4	56628	WASHER — 3/16-18 flat	2	30	A-51517	17" BAR (.063" gauge)	1
5	55632	PLATE — spiked bumper	1		A-51521	21" BAR (.063" gauge)	1
6	80573	SCREW — 1/4-20 x 1 3/8 hex hd.	2		A-51525	25" BAR (.063" gauge)	1
7	56281	CUSHION — handle bar	2		A-51539	30" BAR (.063" gauge)	1
8	56282	CLAMP — handle bar	2		52298-1	36" BAR (.063" gauge)	1
9	80676	SCREW — 12-24 x 3/8 hex hd.	4		52299-1	42" BAR (.063" gauge)	1
10	56236	WASHER — thrust, inner	1			1/2" PITCH OREGON #10C CHIPPER CHAIN (standard)	
11	56231	RACE — inner	1	31	A-51927	17" CHAIN w/kit	1
12	A-56615	SPROCKET & DRUM (standard 7-tooth — 1/2 pitch)	1		AA-73340	21" CHAIN w/kit	1
	A-56299	SPROCKET & DRUM (Optional 7-tooth — 7/16 pitch)	1		AA-73342	25" CHAIN w/kit	1
13	56230	BEARING — needle (included with Sprocket & Drum)	1		AA-73344	30" CHAIN w/kit	1
					AA-73346	36" CHAIN w/kit	1
14	56132	WASHER — thrust, outer	1		AA-73350	42" CHAIN w/kit	1
15	55123-A	SPRING — clutch	2			1/2" PITCH OREGON #32C MICROBIT CHAIN	
16	55075-3	SPIDER — clutch	1	31	A-52560	17" MICROBIT CHAIN w/kit	1
17	55076-1	SHOE — clutch	6		A-52395	21" MICROBIT CHAIN w/kit	1
18	55225-1	KEY — clutch	2		A-52397	25" MICROBIT CHAIN w/kit	1
19	56238-A	COVER — clutch	1		A-52399	30" MICROBIT CHAIN w/kit	1
20	55036	WASHER — clutch retaining	1		A-52400	36" MICROBIT CHAIN w/kit	1
21	81116	NUT — 3/8-24 hex lock	1		A-52401	44" MICROBIT CHAIN w/kit	1
22	A-56870-1	COVER — drive case	1			3/8" PITCH #62C CHIPPER CHAIN (optional)	
		Includes		31	A-51535	17" chipper chain (optional)	1
	56866	DECAL (900 D)	1		A-51536	21" chipper chain (optional)	1
23	81123	NUT — 3/16-18 hex lock	1		A-51537	25" chipper chain (optional)	1
24	55613	PIN — guide bar adjusting	1		A-51540	30" chipper chain (optional)	1
25	80617	SCREW — 3/16-18 x 2 rd. hd.	1		A-52306	36" chipper chain (optional)	1
26	83018	WASHER — 3/8 lock	2		A-52307	42" chipper chain (optional)	1

NOTE: Sizes listed above for bars and chain loops refer to usable length from saw bumper plate to nose of bar.

HOMELITE CHAIN SAW MODEL 900 D

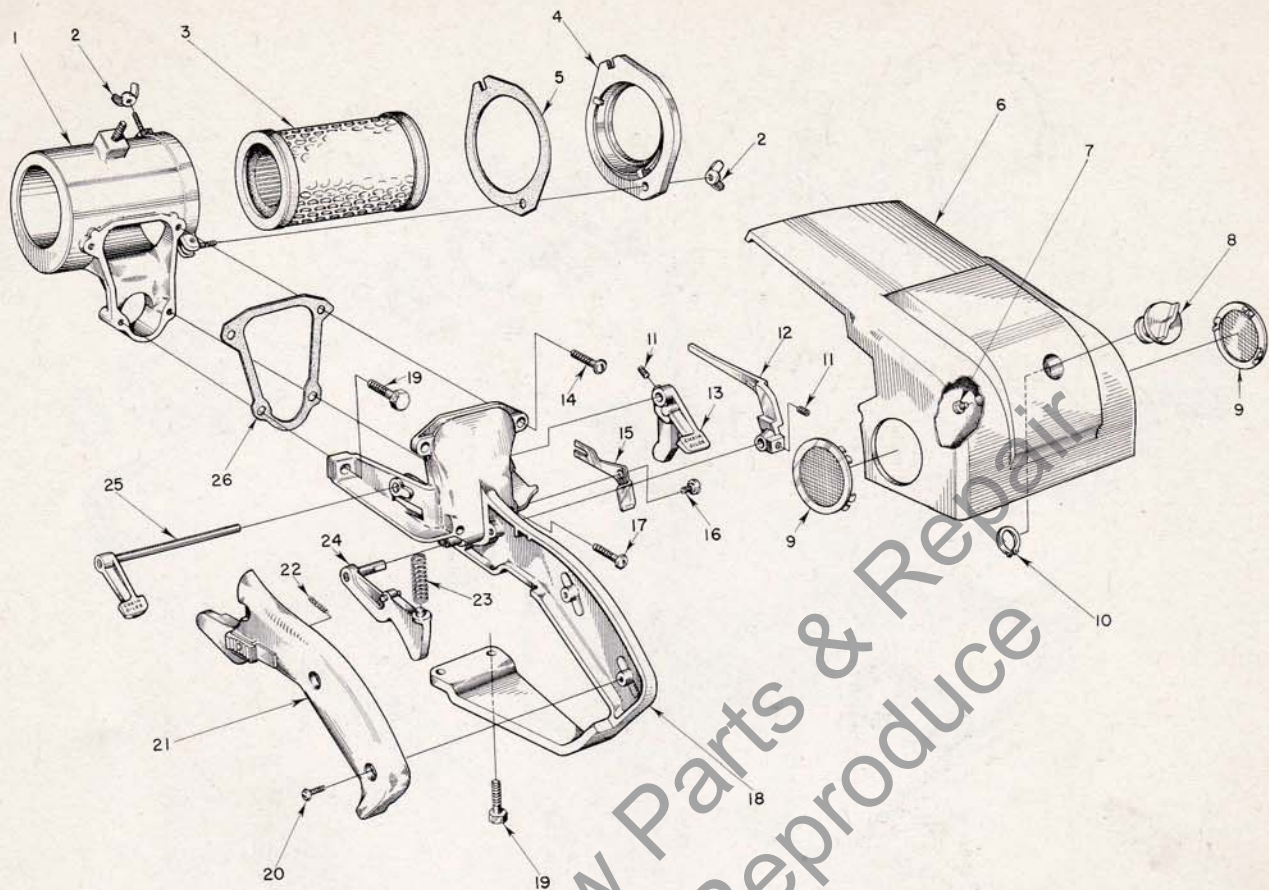


FIGURE 2—ENGINE CONTROL PARTS

MARCH 1960

Index No.	Part No.	Description	No. Required	Index No.	Part No.	Description	No. Required
1	A-56347	CASE — air filter.....	1	13	56227	LEVER — oiler.....	1
2	81129	WING-NUT.....	2	14	80625	SCREW — 10-32 x 1/2 pan hd.....	2
3	A-57032	FILTER — air w/gaskets.....	2	15	56241	LEVER — choke.....	1
		Includes		16	56242	SCREW — choke lever.....	1
	57031	GASKET (cement to filter).....	2	17	80624	SCREW — 10-32 x 1 pan hd.....	2
4	A-56351	COVER — air filter case w/gasket.....	1	18	A-56342	HANDLE — throttle w/bushings.....	1
		Includes		19	80573	SCREW — 1/4-20 x 1 3/8 hex hd.....	4
5	56352	GASKET (cement to filter cover).....	1	20	80560	SCREW — 8-32 x 1/2 pan hd.....	3
6	A-57156	SHROUD — cylinder, w 56298 bumper.....	1	21	A-56345	COVER — grip.....	1
7	56298	BUMPER — rubber.....	2			Includes	
8	A-56521	NUT — mounting w/insert.....	1		AA-55282	LOCK — throttle.....	1
9	74099-1	PLUG — button.....	2			Includes	
10	56522	RING — snap.....	1			SPRING.....	1
	56400	DECAL — "HOMELITE".....	1	22	72970	SPRING.....	1
	56869	DECAL (900-D).....	1	23	55045-A	SPRING — throttle trigger.....	1
	56363-B	DECAL — starting instructions.....	1	24	A-56343	TRIGGER — throttle.....	1
11	80353	SCREW — set, cup point.....	2	25	A-56358	SHAFT & LEVER — oiler.....	1
12	56105	ARM — throttle.....	1	26	56280	GASKET — filter case.....	1

Always furnish saw model and serial number when ordering parts

HOMELITE CHAIN SAW MODEL 900 D

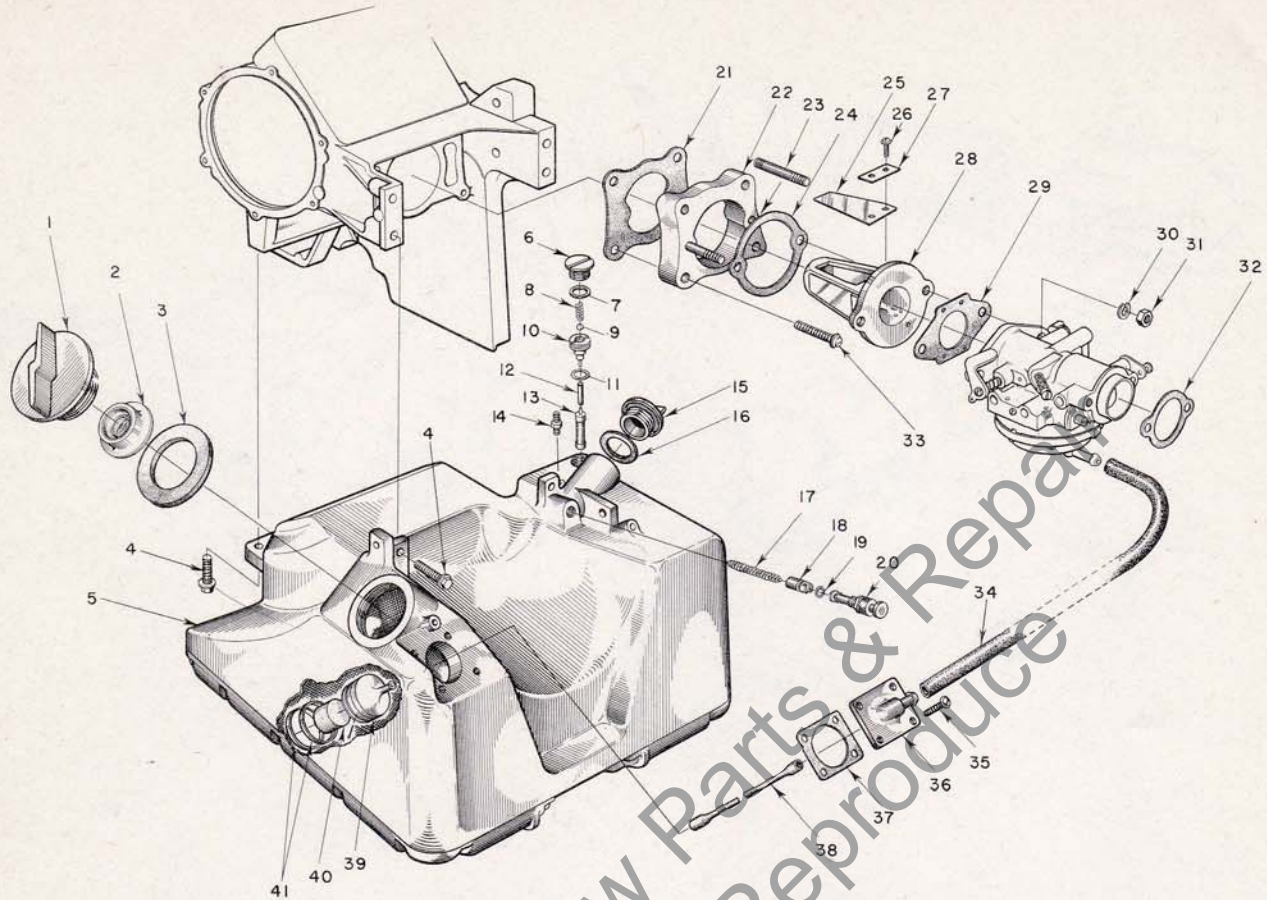


FIGURE 3 — FUEL INDUCTION SYSTEM

APRIL 1960

Index No.	Part No.	Description	No. Required	Index No.	Part No.	Description	No. Required
1	A-56907	CAP — fuel.....	1	20	71764	BUTTON — plunger.....	1
		Includes		21	56279	GASKET — spacer.....	1
2	56865	VALVE — relief.....	1	22	56075-1A	SPACER — reed adapter.....	1
3	56335	GASKET.....	1	23	55945	STUD.....	2
4	80573	SCREW — ¼-20 x 1½ hex hd.....	4	24	55946	GASKET — reed adapter.....	1
5	A-56328	FUEL TANK.....	1	25	55941	REED.....	4
6	AA-55167	CAP — oil supply line.....	1	26	80658	SCREW — 4-40 x ¾ pan hd.....	8
7	55107	GASKET.....	1	27	55942	PLATE — reed.....	4
8	55288-A	SPRING — check valve.....	1	28	55932-2	ADAPTER — reed valve.....	1
9	25527	BALL — check, ½ dia.....	1	29	55553-1	GASKET — carburetor.....	1
10	55109-A	SEAT — check valve.....	1	30	83009	WASHER — ¼ lock.....	2
11	55110	GASKET.....	1	31	81013	NUT — ¼-20 hex.....	2
12	56262	SLEEVE — flexible, oil.....	1	32	56313	GASKET — air intake.....	1
13	AA-55259-A	PICK-UP — oil.....	1	33	80743	SCREW — 10-32 x 1½ pan hd.....	4
14	A-55824	VALVE — check.....	1	34	56326	FUEL LINE.....	1
15	A-56330	CAP — chain oil.....	1	35	80605	SCREW — 6-32 x ¾ pan hd.....	4
		Includes		36	A-56650	FITTING — outlet.....	1
16	72280	GASKET.....	1	37	56333	GASKET — outlet fitting.....	1
17	71762	SPRING — plunger.....	1	38	55805	SLEEVE — flexible.....	1
18	A-74406	TUBE — plunger.....	1	39	A-56200	STRAINER — fuel, w/brass nail.....	1
		Includes				Includes	
19	74388	"O" RING.....	1	40	74374	FILTER — felt.....	1
				41	56196	BUMPER — rubber.....	2

HOMELITE CHAIN SAW MODEL 900 D

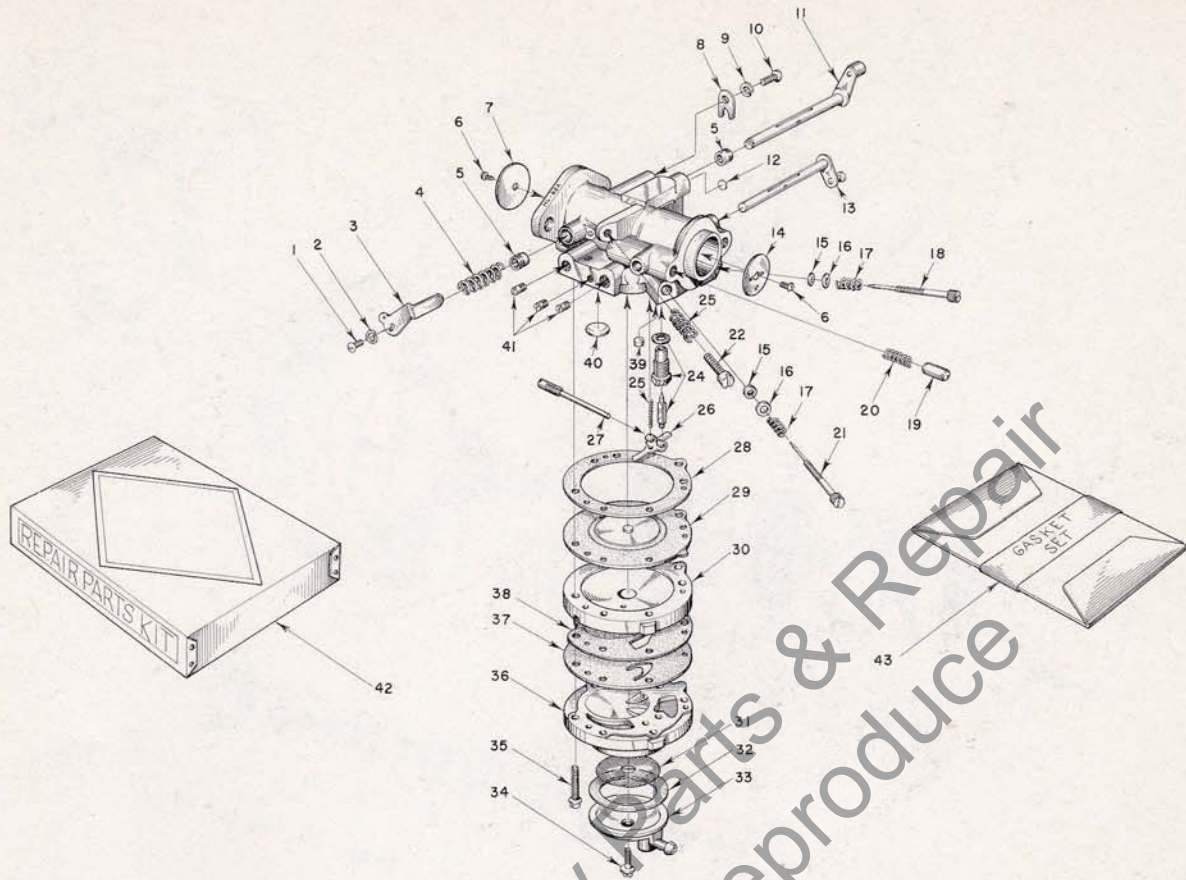


FIGURE 4 — TILLOTSON CARBURETOR

APRIL 1960

Index No.	Part No.	Description	No. Required	Index No.	Part No.	Description	No. Required
	A-56308	CARBURETOR — Tillotson	1	22	*71509	SCREW — idle stop	1
		Includes		23	*28064	SPRING — idle stop screw	1
1	*71521	SCREW — 4-36 x 1/2 rd. hd.	1	24	*A-55761	INLET NEEDLE & SEAT	1
2	*83008	WASHER — #4 lock	1		55344	GASKET — inlet seat	1
3	56224	LEVER — throttle stop	1	25	*55759	SPRING — control lever	1
4	*56630	SPRING — throttle friction	1	26	*55747	LEVER — inlet control	1
5	72812	BUSHING — throttle shaft	2	27	*A-55762	PIN — inlet lever fulcrum	1
6	*80012	SCREW — shutter	2	28	*55754	GASKET — main diaphragm	1
7	75532	SHUTTER — throttle	1	29	*A-55760	DIAPHRAGM — main	1
8	73086	CLIP — throttle shaft	1	30	55749	COVER — main diaphragm	1
9	83000	WASHER — #8 lock	1	31	*55752	SCREEN — fuel strainer	1
10	73088	SCREW — 8-32 x 3/16 flat hd.	1	32	*55751	GASKET — pump strainer	1
11	A-56641	SHAFT & LEVER — throttle	1	33	55750	COVER — fuel pump	1
12	56642	PLUG — welch, 3/16 dia.	1	34	*55756	SCREW — pump cover retaining	1
13	A-56639	SHAFT & LEVER — choke	1	35	55316	SCREW — body, with lockwasher	6
14	73263	SHUTTER — choke	1	36	55748	BODY — fuel pump	1
15	*75733	PACKING — adjustment screw	2	37	*55753	DIAPHRAGM — fuel pump	1
16	*75735	WASHER — adjustment screw	2	38	55881	GASKET — pump diaphragm	1
17	*73075	SPRING — adjustment screw	2	39	*55763	PLUG — channel	1
18	*56644	SCREW — main adjustment	1	40	*30818	PLUG — 3/8 dia. welch	1
19	71494	PIN — choke friction	1	41	73067	PLUG — 8-32 headless	3
20	73264	SPRING — choke friction	1	42	56649	REPAIR PARTS (Kit #RK-402)	1
21	*56627	SCREW — idle adjustment	1	43	*77342	GASKET SET (GS-145)	1

*Included in Repair Parts Kit RK-402.

HOMELITE CHAIN SAW MODEL 900 D

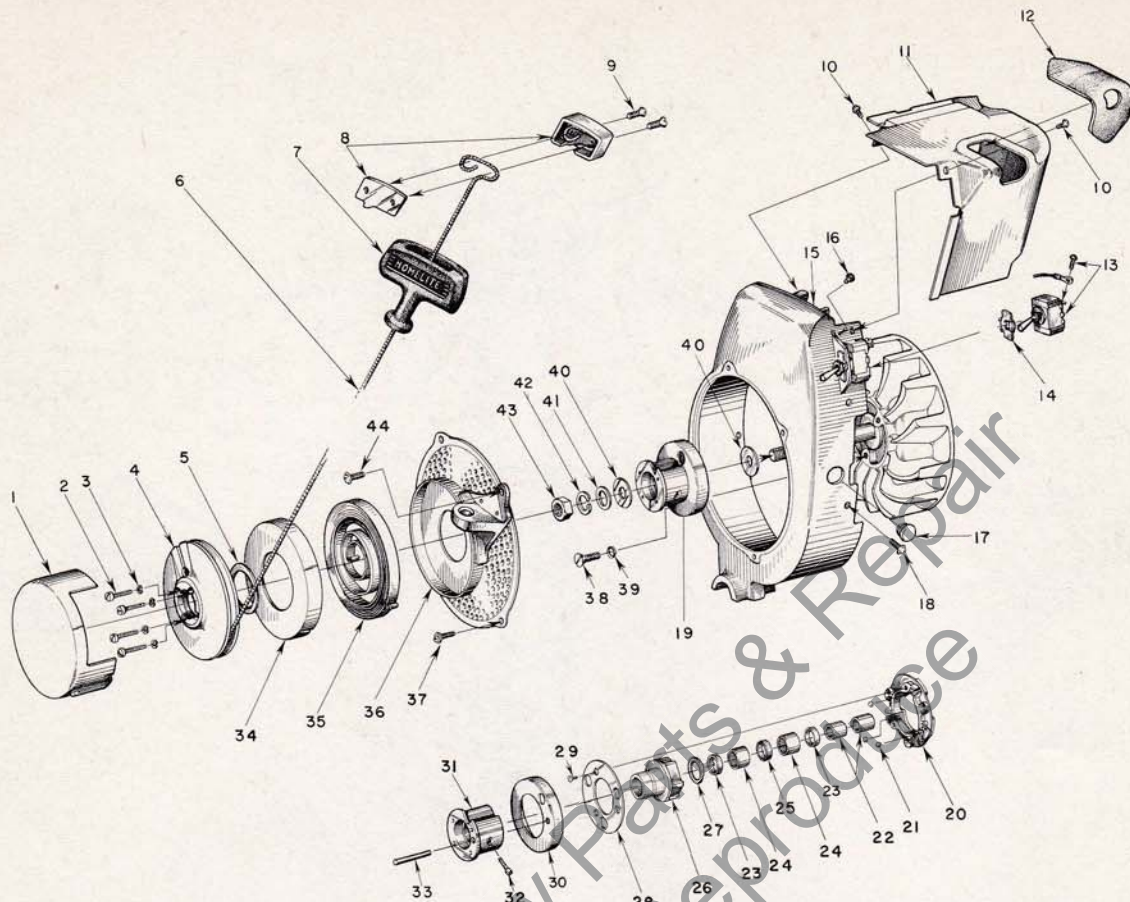


FIGURE 5 — STARTER PARTS

APRIL 1960

Index No.	Part No.	Description	No. Required	Index No.	Part No.	Description	No. Required
1	AA-73234-1	COVER — starter pulley	1			Includes	
	56866	DECAL (900 D)	1	23	71597	SEAL — garlock	2
2	80475	SCREW — 6-32 x 3/4 fil. hd.	4	24	71596	BEARING — needle	2
3	83004	WASHER — lock, #6	4	25	71595	WICK — felt	1
4	55597-2	PULLEY — starter	1	26	AA-73549	RATCHET	1
5	71588	SHIM — pulley	as req.			Includes	
6	55898	ROPE — starter	1	27	73525	WASHER — formica	1
7	55937	GRIP — starter	1	28	71570-B	RETAINER — ball	1
8	A-56081	INSERT — grip	1	29	80464	SCREW — 5-40 x 3/8 flat hd.	3
		Includes		30	56896	CUP — sealing	1
9	80619	SCREW — 10-32 x 3/8 flat hd.	2	31	A-57098	HUB — ratchet	1
10	80577	SCREW — 8-32 x 3/8 pan hd.	2			Includes	
11	A-57155	SHIELD — cylinder, w/56873-A cover	1	32	72295-A	SCREW — ratchet hub	1
12	56873-A	COVER — spark plug	1	33	57065	PIN — Spiral	1
13	A-55877	SWITCH — toggle	1	34	71603	COVER — spring housing	1
14	72085-A	PLATE — indicating (on-off)	1	35	56497	SPRING — recoil	1
15	A-56912	SHROUD — air	1	36	A-56302	SCREEN & BRACKET	1
		Includes				Includes	
16	56298	BUMPER — rubber	2	*A-56304	BRACKET & BUSHING	1	
17	56913	PLUG	1	37	80579	SCREW — 10-32 x 3/8 pan hd.	3
18	80579	SCREW — 10-32 x 3/8 pan hd.	5	38	80173	SCREW — 1/4-20 x 3/8 flat hd.	3
19	A-56899	BALL DRIVE	1	39	83074	WASHER — 1/4 countersunk, lock	3
		Includes index nos. 20 through 33		40	55652	WASHER — thrust	2
20	71563-C	PLATE — ball drive	1	41	84055	WASHER — 7/16 flat, aluminum	1
21	30355-1	BALL — steel	3	42	83019	WASHER — 7/16 lock	1
22	74221	RACE — inner	2	43	81110	NUT — 7/16-20 hex-jam	1
	AA-72306-1	RATCHET & BEARING	1	44	80576	SCREW — 10-32 x 3/8 pan hd. (at bracket)	1

*Assemble to screen with 85073 rivet

HOMELITE CHAIN SAW MODEL 900 D

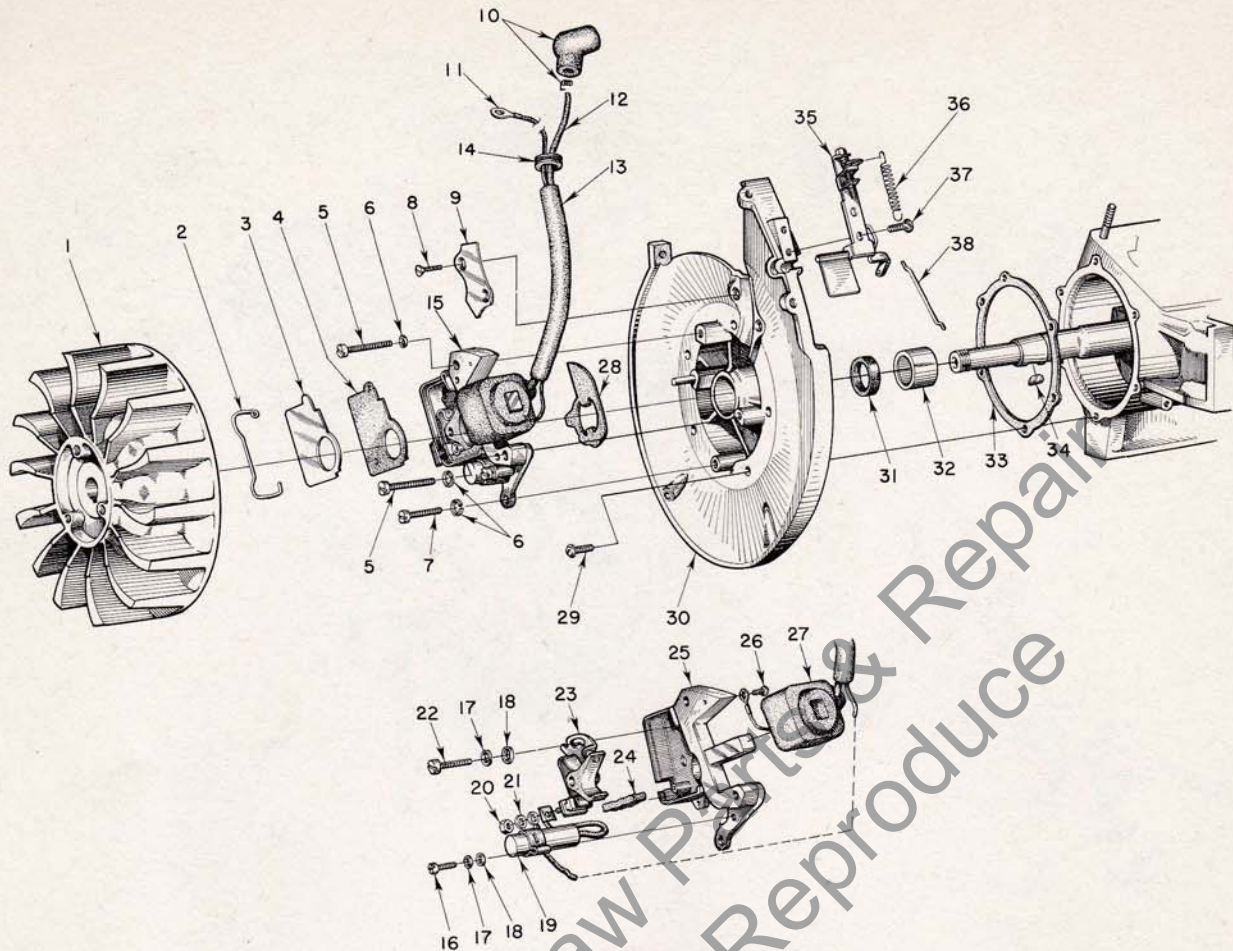


FIGURE 6 — IGNITION

APRIL 1960

Index No.	Part No.	Description	No. Required	Index No.	Part No.	Description	No. Required
1	56276	ROTOR — magneto.....	1	20	55982	NUT — terminal.....	1
2	55980	CLAMP — dust cover.....	1	21	55983	WASHER — terminal.....	1
3	55979	COVER — dust.....	1	22	55985	SCREW — breaker fastening.....	1
4	55978-2	GASKET — dust cover.....	1	23	A-55971	SET OF POINTS.....	1
5	80660	SCREW — 10-24 x 7/8 fil. hd.....	2	24	55984	FELT — cam wiper.....	1
6	83046	WASHER — lock #10.....	3	25	56293	BOX — breaker, w/core.....	1
7	80595	SCREW — 10-24 x 1/2 fil. hd.....	1	26	55977	SCREW — coil ground lead.....	1
8	80598	SCREW — 6-32 x 3/8 flat hd.....	2	27	55986	COIL (with terminals).....	1
9	56250	CLAMP — lead.....	1	28	56292	WASHER — sealing (felt).....	1
10	A-55373	TERMINAL — "Sparky" cover and spring.....	1	29	80576	SCREW — 10-32 x 3/8 pan hd.....	6
11	56900	LEAD — ground.....	1	30	A-56648-A	BACK PLATE w/pivot post.....	1
12	55235-A	LEAD — high tension.....	1			Includes	
13	56294-A	SLEEVE — insulating.....	1	31	56134	SEAL — garlock.....	1
14	71671	GROMMET.....	1	32	56255	BEARING — needle.....	1
15	*	BREAKER BOX.....	1	33	56278	GASKET — back plate.....	1
		Includes items #16 thru 27		34	75078	KEY — rotor.....	1
16	55988	SCREW — condenser fastening.....	1	35	A-56272	GOVERNOR (complete).....	1
17	83060	WASHER — lock.....	2	36	56247	SPRING — governor.....	1
18	84048	WASHER — flat.....	2	37	80629	SCREW — 8-32 x 3/8 pan hd.....	2
19	55987	CONDENSER (with lead and terminal).....	1	38	56246	ROD — governor (to throttle stop lever).....	1

*Order Individual Parts

HOMELITE CHAIN SAW MODEL 900 D

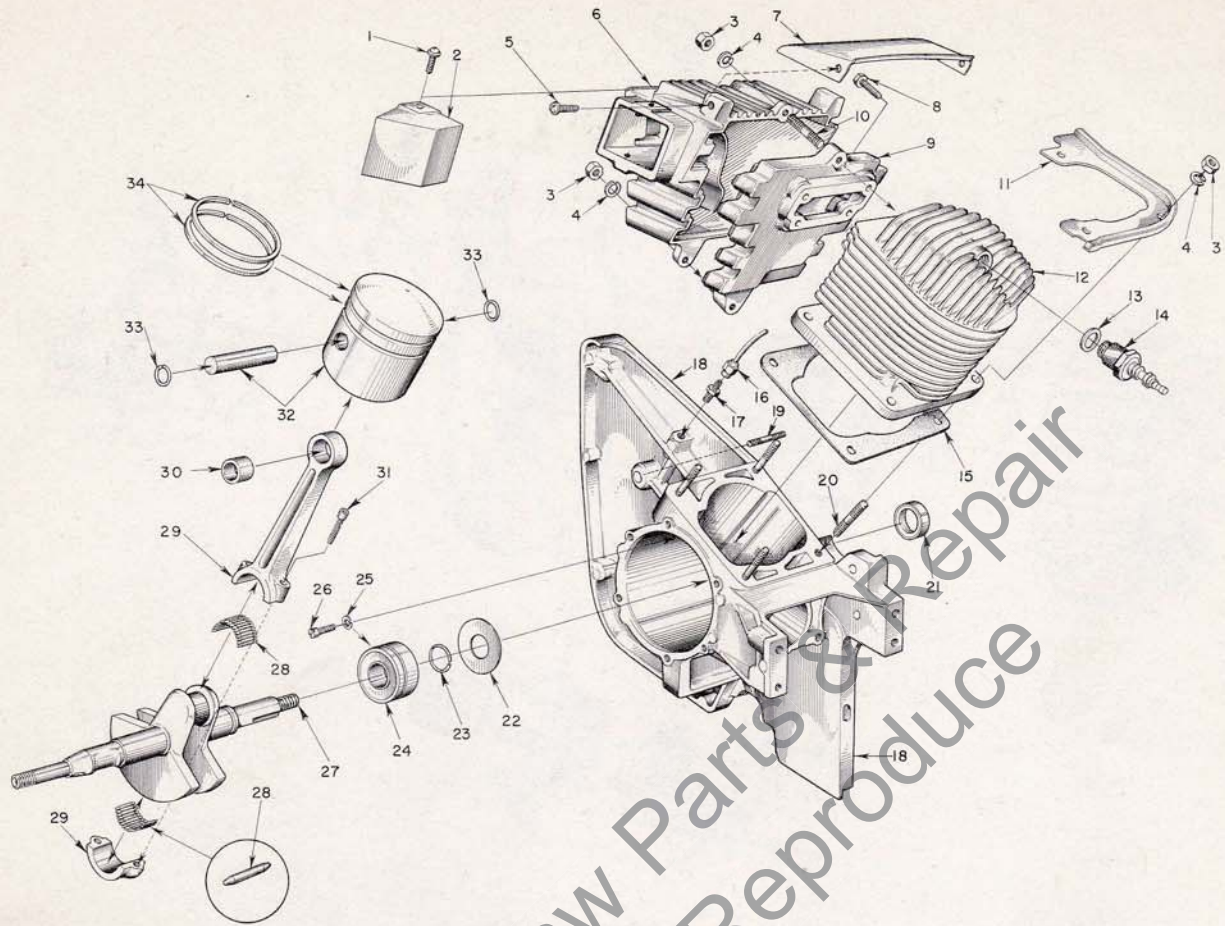


FIGURE 7—ENGINE PARTS

APRIL 1960

Index No.	Part No.	Description	No. Required	Index No.	Part No.	Description	No. Required
1	80579	SCREW — 10-32 x 3/8 pan hd.	2	18	A-57089	CRANKCASE (service).....	1
2	56691-A	CAP — muffler.....	1			Includes	
3	81065-2	NUT — 1/4-28 hex.....	4	19	55623	STUD — guide bar.....	2
4	83009	WASHER — 1/4, lock.....	4	20	56470	STUD — cylinder.....	4
5	80572	SCREW — 10-32 x 3/8 pan hd.	2	21	56256	SEAL — garlock.....	1
6	56164-A	BODY — muffler.....	1	22	56258	GASKET — crankcase sealing.....	1
7	56582-A	SHIELD — muffler.....	1	23	56259	RING — snap.....	1
8	80751	SCREW — 12-24 x 1 1/8 hex hd.	4	24	56261-S	BEARING — main.....	1
9	A-57133	ADAPTER — muffler.....	1	25	83061	WASHER — lock.....	2
		Includes		26	19238-A	SCREW — bearing retaining.....	2
10	56470	STUD.....	2	27	56056-A	CRANKSHAFT.....	1
11	A-56914	SHIELD — sawdust, cylinder.....	1	28	AA-72206	ROLLERS (set of 31 needles).....	1
		Includes		29	A-56287	ROD — connecting, w/cap.....	1
	56916	STRIPPING (cement to shield).....	1			Includes	
12	A-56874	CYLINDER.....	1	30	71167	BEARING — piston pin.....	1
13	25038	GASKET (included with spark plug).....	1	31	80492	SCREW — 10-32 x 1/2, sock't. hd.	2
14	72858-2S	SPARK PLUG (Champion HO-3).....	1	32	A-57090	PISTON & PIN.....	1
15	56875	GASKET — cylinder.....	1			Includes	
16	A-56336	LINE — chain oil.....	1	33	56290	RING — snap.....	2
17	31733-1	ADAPTER — straight.....	1	34	56828	RING — piston.....	2

HOMELITE

Authorized Sales and Service Branches

Homelite sales and service factory branches are located throughout the country. Field representatives and factory-trained servicemen are always available, ready and able to keep your Homelites running in top performance at all times. See the "Yellow Pages" for the address and phone number of your nearest Homelite Branch office.

California

Alhambra (Los Angeles area)
Fresno
Sacramento
S. San Francisco

Colorado

Denver

Connecticut

Byram
Hartford

Florida

Jacksonville
Miami

Georgia

Atlanta

Illinois

Bloomington
Springfield
Stone Park (Chicago area)

Indiana

Indianapolis

Louisiana

Bossier City
Metairie

Maine

Orono

Maryland

Baltimore

Massachusetts

Allston (Boston area)

Michigan

Detroit
Grand Rapids

Minnesota

St. Paul

Missouri

Kansas City
St. Louis

Nebraska

Omaha

New Jersey

North Arlington
Woodbridge

New York

Buffalo
Latham (Albany area)
Rochester
Syracuse

North Carolina

Charlotte
Raleigh

Ohio

Cincinnati
Cleveland
Toledo

Oklahoma

Oklahoma City

Oregon

Portland

Pennsylvania

Altoona
Erie
Harrisburg
Hazleton
Malvern
Philadelphia
Pittsburgh

Tennessee

Knoxville
Memphis

Texas

Dallas
Lufkin

Utah

North Salt Lake

Virginia

Arlington
Richmond
Roanoke

Washington

Seattle
Spokane

West Virginia

Charleston
Clarksburg

Wisconsin

Milwaukee

DOMINION OF CANADA TERRY MACHINERY CO., LTD.

Quebec

Montreal
Quebec City

Alberta

Edmonton

British Columbia

Vancouver

New Brunswick

Moncton

Ontario

Ottawa
Toronto

**You'll
SPEED WORK
and make
MORE MONEY
with...**



HOMELITE
SELF-PRIMING PUMPS



HOMELITE
DEPENDABLE GENERATORS



HOMELITE
POWERFUL ONE-MAN CHAIN SAWS



HOMELITE
ONE-MAN CONCRETE VIBRATORS



HOMELITE — BOSCH (Germany)
ELECTRIC BUILDER'S HAMMERS

All Powered By Famous HOMELITE Engines

Homelite's two-cycle gasoline engines are the most efficient and dependable units of their kind ever built. Their two-cycle design, developed to perfection by Homelite engineers over the past 35 years, gives maximum power for the least weight because power is produced at every piston down stroke. As an added advantage, this design requires fewer moving parts which means greater dependability and lower maintenance.

HOMELITE

a division of **Textron Inc.**
PORT CHESTER, N. Y.