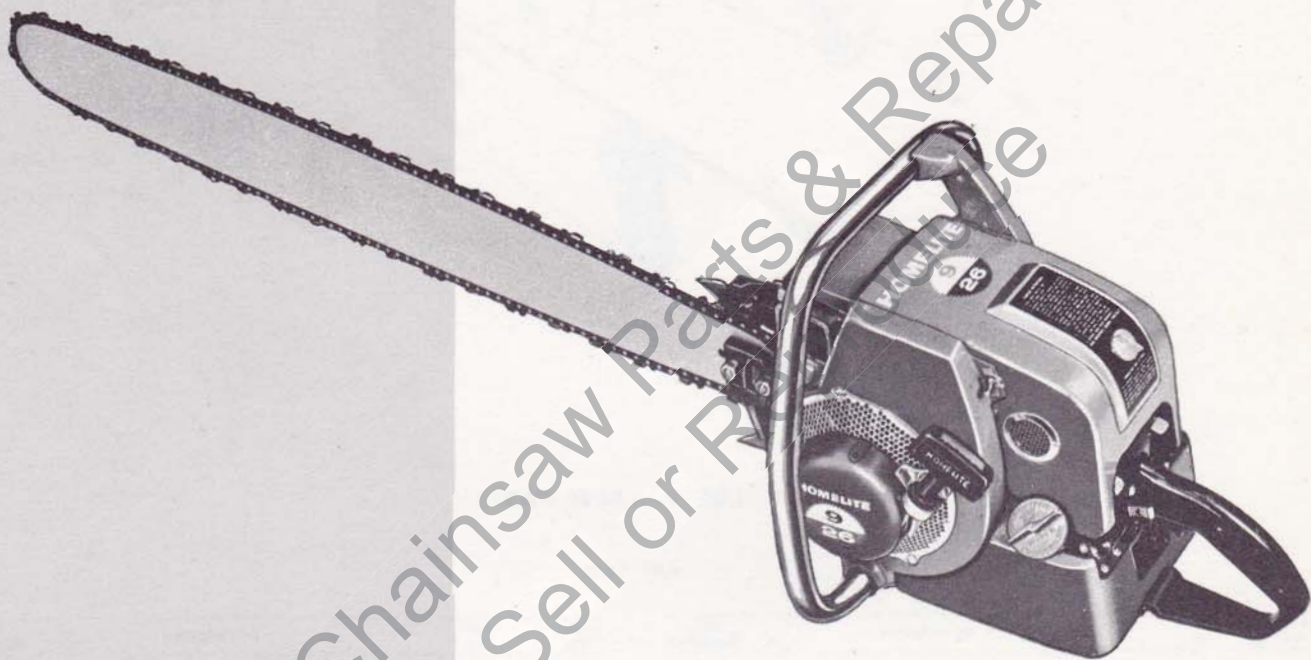


# HOMELITE

## Chain Saw



**Model 9-26**



# PARTS LIST

May 1959

# HOMELITE CHAIN SAW MODEL 9-26

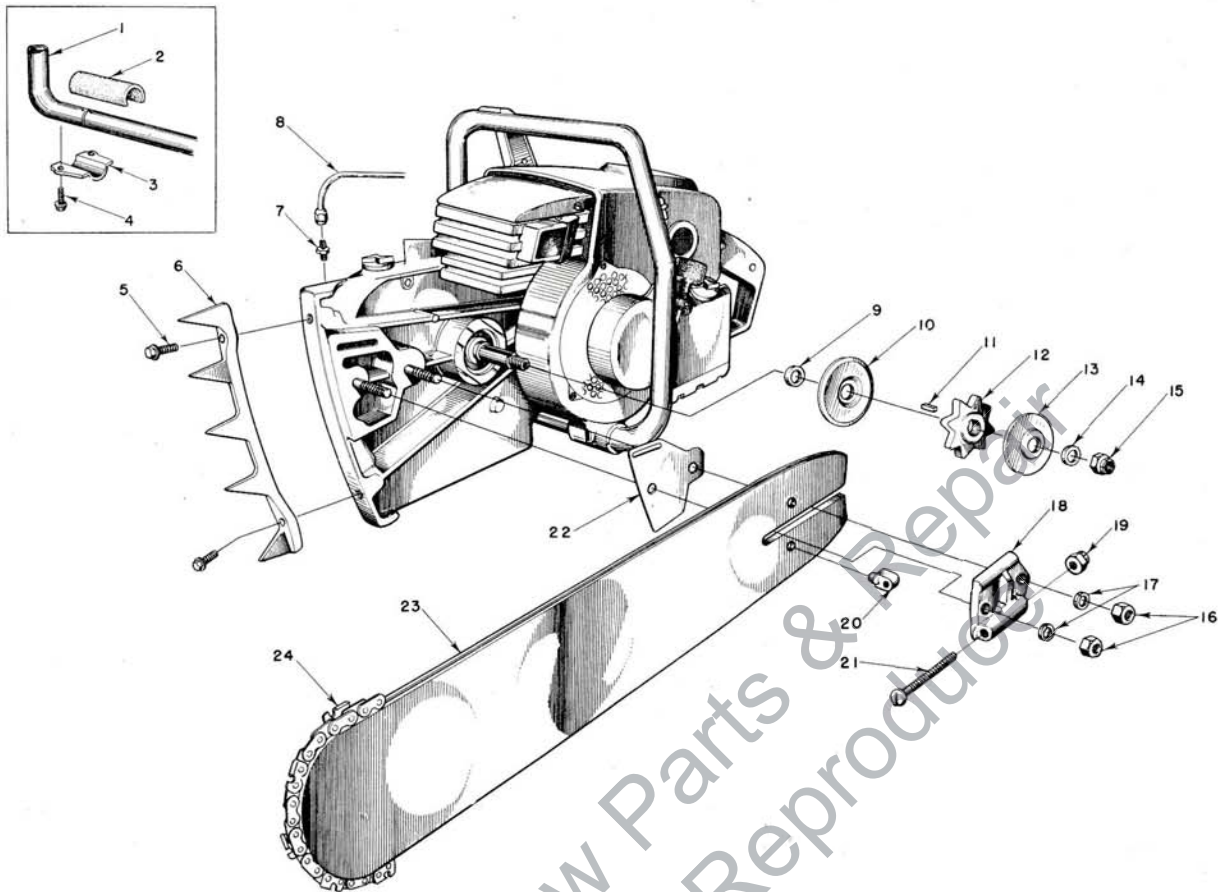


FIGURE 1 — SAW PARTS

MAY 1959

Index No.	Part No.	Description	No. Required	Index No.	Part No.	Description	No. Required
1	A-56267	HANDLE BAR .....	1		A-55723	23" HOMELITE BAR — .063" gauge .....	1
2	56281	CUSHION — handle bar .....	2		55728	28" HOMELITE BAR — .063" gauge .....	1
3	56282	CLAMP — handle bar .....	2		55704-1A	33" BAR — .063" gauge .....	1
4	80676	SCREW — 12-24 x 3/8 hex hd. ....	4		55705-1	38" BAR — .063" gauge .....	1
5	80573	SCREW — 1/4-20 x 1 1/16 hex hd. ....	2		55706-1	44" BAR — .063" gauge .....	1
6	55103	PLATE — spiked bumper .....	1		55707-1	50" BAR — .063" gauge .....	1
7	31733-1	ADAPTER — straight .....	1		55708-1	60" BAR — .063" gauge .....	1
8	A-56578	OIL LINE .....	1				
9	56593	SPACER — sprocket .....	1				
10	73771	FLANGE — sprocket, inner .....	1	24	1/16 PITCH OREGON #4C CHIPPER CHAIN (9-26 standard)		
11	73215	KEY — sprocket (3/16 sq. x 5/8) .....	1		AA-72977	18" CHAIN w/kit .....	1
12	73860	SPROCKET — 7/16 pitch standard, 7-tooth ....	1		A-55742	20" CHAIN w/kit .....	1
	73252-1	SPROCKET — 1/2 pitch optional, 8-tooth ....	1		AA-72978	23" CHAIN w/kit .....	1
13	73253	FLANGE — sprocket, outer .....	1		AA-72979	28" CHAIN w/kit .....	1
14	73254-A	SPACER — sprocket .....	1		AA-72983	33" CHAIN w/kit .....	1
15	81101	NUT — 1/2-20 hex lock .....	1		AA-72981	38" CHAIN w/kit .....	1
16	81089	NUT — 3/8-16 hex .....	2		AA-72984	44" CHAIN w/kit .....	1
17	83018	WASHER — 3/8 lock .....	2		AA-73564	50" CHAIN w/kit .....	1
	A-55591	ADJUSTING PLATE .....	1		AA-73563	60" CHAIN w/kit.....	1
		Includes					
18	55551-B	PLATE — adjusting .....	1	24	1/2 PITCH OREGON #10C CHIPPER CHAIN (9-26 optional)		
19	81123	NUT — hex lock .....	1		AA-73338	18" CHAIN w/kit .....	1
20	55552	PIN — guide bar adjusting .....	1		A-55319	20" CHAIN w/kit .....	1
21	80617	SCREW — 3/16-18 x 2 rd. hd. ....	1		AA-73340	23" CHAIN w/kit .....	1
22	55128	SHIM — guide bar .....	1		AA-73342	28" CHAIN w/kit .....	1
		HARD TRACK PLUS EXTRA HARD TIP GUIDE BARS			AA-73344	33" CHAIN w/kit .....	1
23	A-55718	18" HOMELITE BAR — .063" gauge .....	1		AA-73346	38" CHAIN w/kit .....	1
	A-55720	20" HOMELITE BAR — .063" gauge .....	1		AA-73350	44" CHAIN w/kit .....	1
					AA-73597	50" CHAIN w/kit .....	1
					AA-73598	60" CHAIN w/kit.....	1

NOTE: Sizes listed above for bars and chain loops refer to usable length from saw bumper plate to nose of bar.



# HOMELITE CHAIN SAW MODEL 9-26

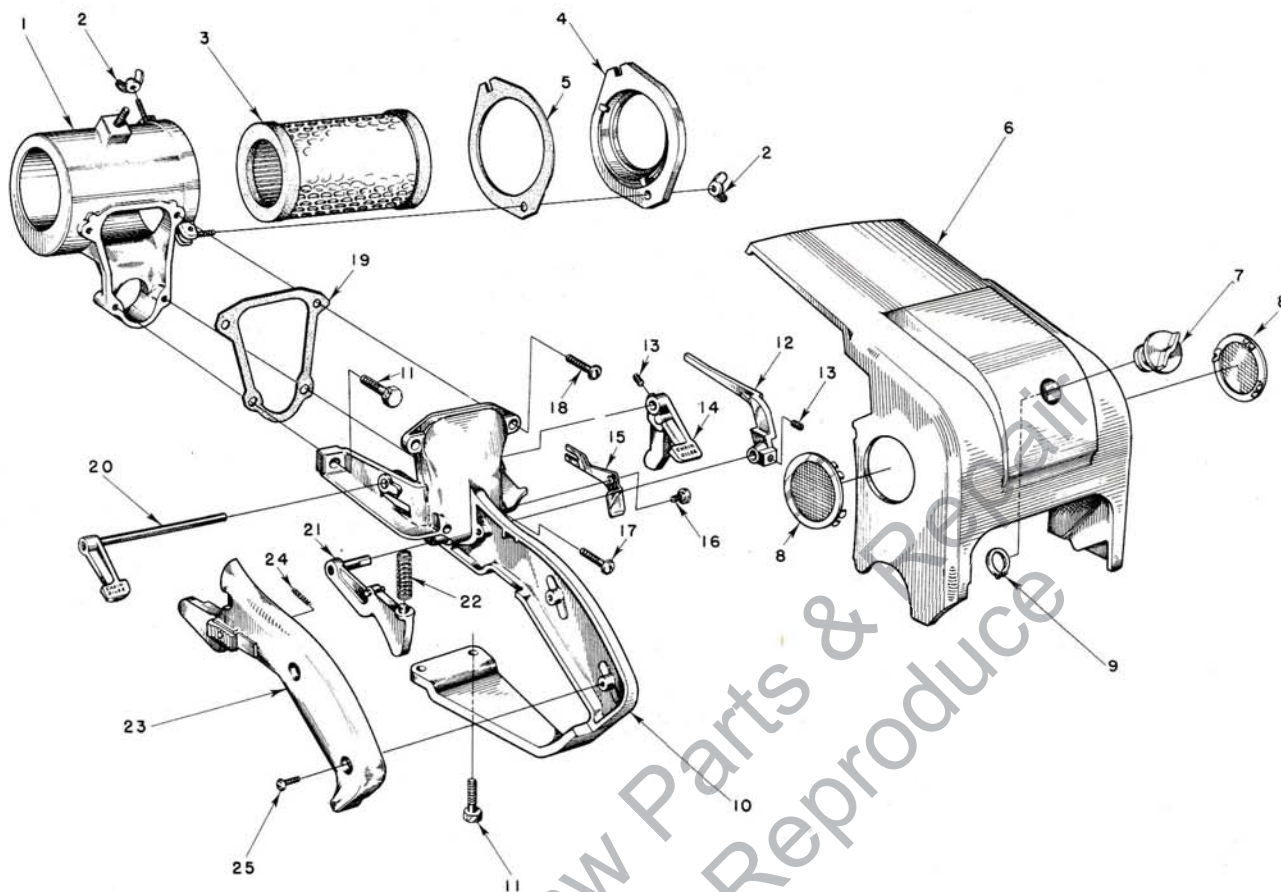


FIGURE 2 — ENGINE CONTROL PARTS

MAY 1959

Index No.	Part No.	Description	No. Required	Index No.	Part No.	Description	No. Required
1	A-56347	CASE—air filter	1	13	80350	SCREW—set	2
2	81129	WING-NUT	2	14	56227	LEVER—oiler	1
3	56526	ELEMENT—air filter (WIX)	1	15	56241	LEVER—choke	1
4	A-56351	COVER—air filter case w/gasket	1	16	56242	SCREW—choke lever	1
		Includes		17	80624	SCREW—10-32 x 1 pan hd.	2
5	56352	GASKET—(cement to filter cover)	1	18	80625	SCREW—10-32 x 1/2 pan hd.	2
6	56082	SHROUD—cylinder	1	19	56280	GASKET—filter case	1
7	A-56521	NUT—mounting w/insert	1	20	A-56358	SHAFT & LEVER—oiler	1
8	74099-1	PLUG—button	2	21	A-56343	TRIGGER—throttle	1
9	56522	RING—snap	1	22	55045-A	SPRING—throttle trigger	1
	56400	DECAL—"HOMELITE"	1	23	A-56345	COVER—grip	1
	56600	DECAL (9-26)	1			Includes	
	56363-A	DECAL—starting instructions	1		AA-55282	LOCK—throttle	1
10	A-56342	HANDLE—throttle w/bushings	1			Includes	
11	80573	SCREW—1/4-20 x 1 1/8 hex hd.	4	24	72970	SPRING	1
12	56105	ARM—throttle	1	25	80560	SCREW—8-32 x 1/2 pan hd.	3

# HOMELITE CHAIN SAW MODEL 9-26

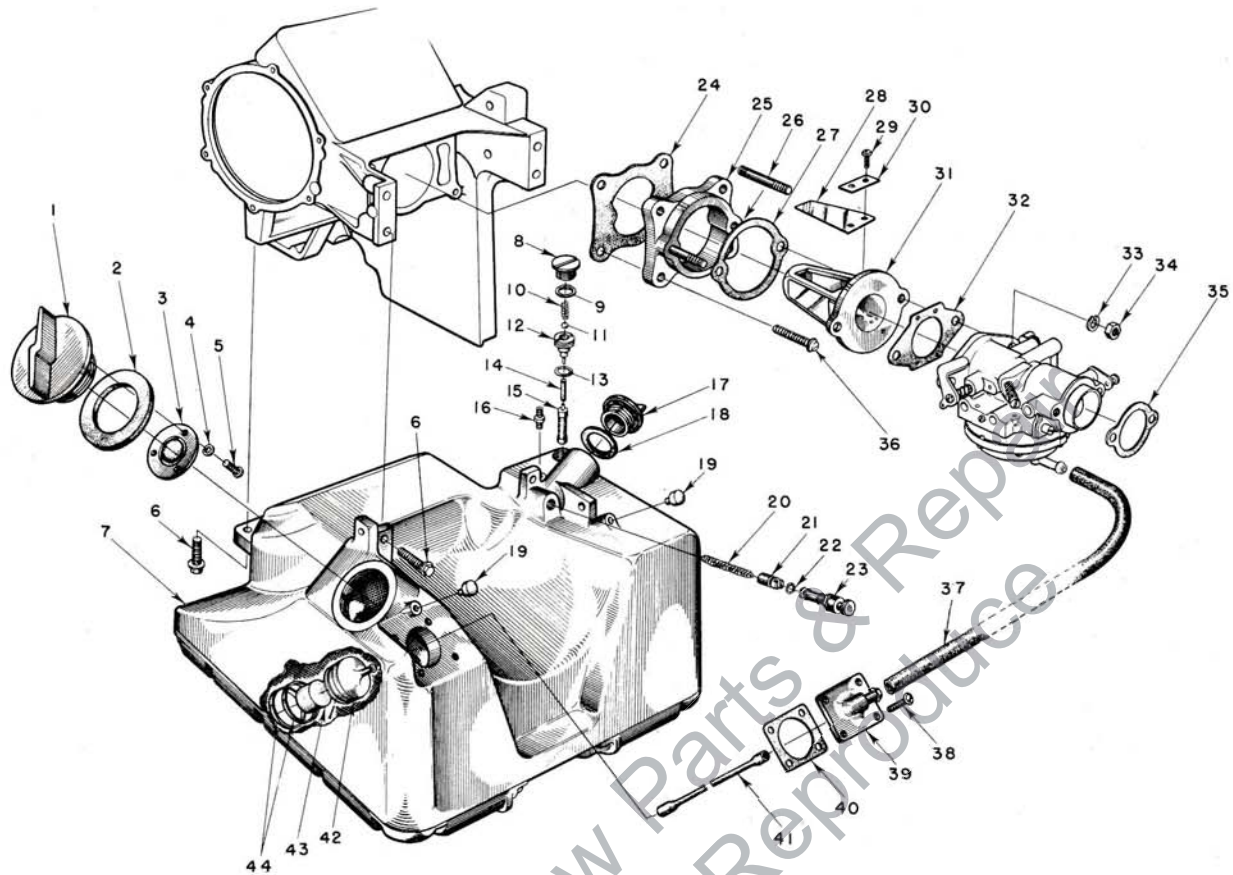


FIGURE 3 — FUEL INDUCTION SYSTEM

MAY 1959

Index No.	Part No.	Description	No. Required	Index No.	Part No.	Description	No. Required
1	A-56334	CAP—fuel	1	22	74388	"O" RING	1
		Includes		23	71764	BUTTON—plunger	1
2	56335	GASKET	1	24	56279	GASKET—spacer	1
3	A-55301-C	VALVE—relief	1	25	56075	SPACER—reed adapter	1
4	83083	WASHER—lock	3	26	55945	STUD	2
5	80592	SCREW—3-48 x 1/4 rd. hd.	3	27	55946	GASKET—reed adapter	1
6	80573	SCREW—1/4-20 x 1 1/8 hex hd.	4	28	55941	REED	4
7	A-56328	FUEL TANK	1	29	80658	SCREW—4-40 x 3/8 pan hd.	8
8	AA-55167	CAP—oil supply line	1	30	55942	PLATE—reed	4
9	55107	GASKET	1	31	55932	ADAPTER—reed valve	1
10	55288-A	SPRING—check valve	1	32	55553	GASKET—carburetor	1
11	25527	BALL—check, 5/32 dia.	1	33	83009	WASHER—1/4 lock	2
12	55109-A	SEAT—check valve	1	34	81013	NUT—1/4-20 hex	2
13	55110	GASKET	1	35	56313	GASKET—air intake	1
14	56262	SLEEVE—flexible, oil	1	36	80583	SCREW—10-32 x 3/4 pan hd.	4
15	AA-55259-A	PICK-UP—oil	1	37	56326	FUEL LINE	1
16	A-55824	VALVE—check	1	38	80605	SCREW—6-32 x 5/16 pan hd.	4
17	A-56330	CAP—chain oil	1	39	A-56650	FITTING—outlet	1
		Includes		40	56333	GASKET—outlet fitting	1
18	72280	GASKET	1	41	55805	SLEEVE—flexible	1
19	56298	BUMPER—rubber	2	42	A-56200	STRAINER—fuel, w/brass nail	1
20	71762	SPRING—plunger	1			Includes	
21	A-74406	TUBE—plunger	1	43	74374	FILTER—felt	1
		Includes		44	56196	BUMPER—rubber	2



# HOMELITE CHAIN SAW MODEL 9-26

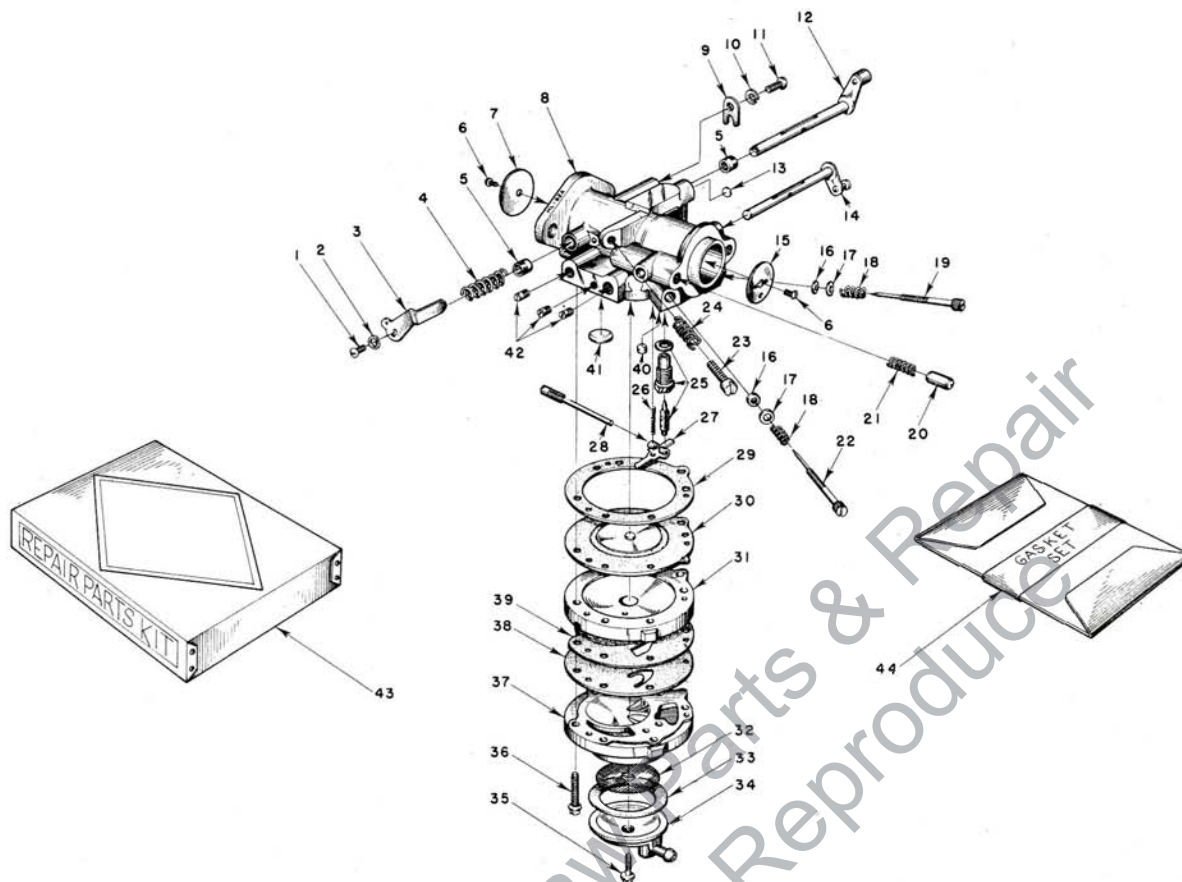


FIGURE 4 — TILLOTSON HL-62A CARBURETOR

MAY 1959

Index No.	Part No.	Description	No. Required	Index No.	Part No.	Description	No. Required
	A-56308	CARBURETOR—Tillotson HL-62A	1	23	*71509	SCREW—idle stop	1
		Includes		24	*28064	SPRING—idle stop screw	1
1	*71521	SCREW—4-36 x 1/2 rd. hd.	1	25	*A-55761	INLET NEEDLE & SEAT	1
2	*83008	WASHER—#4 lock	1			Includes	
3	56224	LEVER—throttle stop	1		55344	GASKET—inlet seat	1
4	56630	SPRING—throttle friction	1	26	*55759	SPRING—control lever	1
5	72812	BUSHING—throttle shaft	2	27	*55747	LEVER—inlet control	1
6	*80012	SCREW—shutter	2	28	*A-55762	PIN—inlet lever fulcrum	1
7	75532	SHUTTER—throttle	1	29	†55754	GASKET—main diaphragm	1
8	A-56643	BODY—service	1	30	†A-55760	DIAPHRAGM—main	1
9	73086	CLIP—throttle shaft	1	31	55749	COVER—main diaphragm	1
10	83000	WASHER—#8 lock	1	32	*55752	SCREEN—fuel strainer	1
11	73088	SCREW—8-32 x 3/16 flat hd.	1	33	†55751	GASKET—pump strainer	1
12	A-56641	SHAFT & LEVER—throttle	1	34	55750	COVER—fuel pump	1
13	56642	PLUG—welch, 3/16 dia.	1	35	*55756	SCREW—pump cover retaining	1
14	A-56639	SHAFT & LEVER—choke	1	36	55316	SCREW—body, with lockwasher	6
15	73263	SHUTTER—choke	1	37	55748	BODY—fuel pump	1
16	†75733	PACKING—adjustment screw	2	38	†55753	DIAPHRAGM—fuel pump	1
17	*75735	WASHER—adjustment screw	2	39	55881	GASKET—pump diaphragm	1
18	*73075	SPRING—adjustment screw	2	40	*55763	PLUG—channel	1
19	*56644	SCREW—main adjustment	1	41	*30818	PLUG—3/8 dia. welch	1
20	71494	PIN—choke friction	1	42	73067	PLUG—8-32 headless	3
21	73264	SPRING—choke friction	1	43	56649	REPAIR PARTS (Kit #RK-402)	1
22	*56627	SCREW—idle adjustment	1	44	*77342	GASKET SET (GS-145)	1

\*Included in Repair Parts Kit RK-402.

†Included in Gasket Set GS-145.

Always furnish saw model and serial number when ordering parts

# HOMELITE CHAIN SAW MODEL 9-26

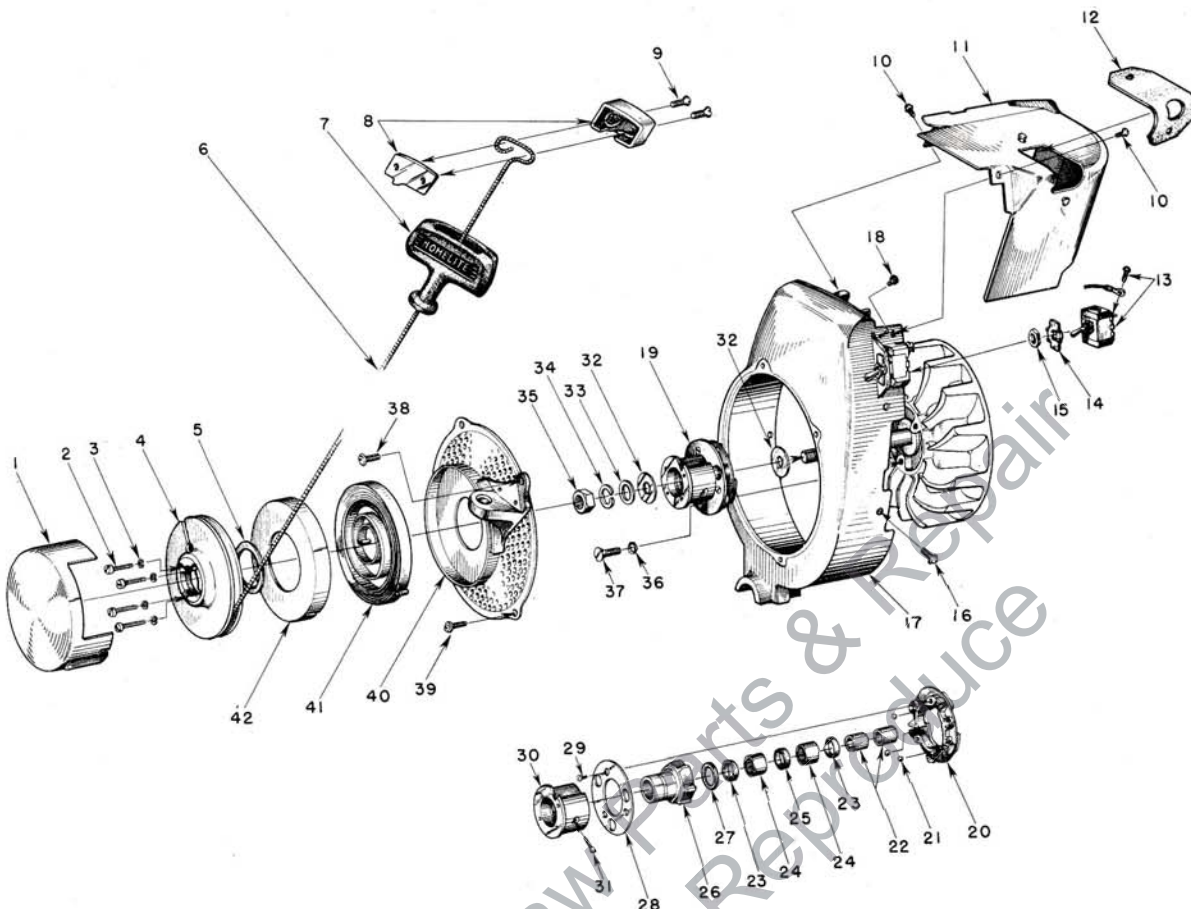


FIGURE 5 — STARTER PARTS

MAY 1959

Index No.	Part No.	Description	No. Required
1	AA-73234-1	COVER—starter pulley	1
	56601	DECAL (9-26)	1
2	80475	SCREW—8-32 x 3/4 fl. hd.	4
3	83004	WASHER—lock, #6	4
4	55597-1	PULLEY—starter	1
5	71588	SHIM—pulley	as req
6	55898	ROPE—starter	1
7	55937	GRIP—starter	1
8	A-56081	INSERT—grip	1
		Includes	
9	80619	SCREW—10-32 x 3/8 flat hd.	2
10	80577	SCREW—8-32 x 3/8 pan hd.	2
11	A-56337	SHIELD—cylinder	1
12	56339	COVER—spark plug	1
13	A-55877	SWITCH—toggle	1
14	72085-A	PLATE—indicating (on-off)	1
15	72084-A1	NUT.(included with toggle switch)	1
16	80579	SCREW—10-32 x 3/8 pan hd.	5
17	A-56297	SHROUD—air	1
		Includes	
18	56298	BUMPER—rubber	2
19	A-56493	BALL DRIVE	1
		Includes index nos. 20 through 31	
20	71563-C	PLATE—ball drive	1
21	30355-1	BALL—steel	3
22	74221	RACE—inner	2

Index No.	Part No.	Description	No. Required
	AA-72306	RATCHET & BEARING	1
		Includes	
23	71597	SEAL—garlock	2
24	71596	BEARING—needle	2
25	71595	WICK—felt	1
26	AA-73549	RATCHET	1
		Includes	
27	73525	WASHER—formica	1
28	71570-B	RETAINER—ball	1
29	80464	SCREW—5-40 x 5/16 flat hd.	3
30	A-56519	HUB—ratchet	1
		Includes	
31	72295-A	SCREW—ratchet hub	1
32	55652	WASHER—thrust	2
33	84055	WASHER—7/16 flat, aluminum	1
34	83019	WASHER—7/16 lock	1
35	81110	NUT—7/16-20 hex-jam	1
36	83074	WASHER—1/4 countersunk, lock	3
37	80173	SCREW—1/4-20 x 5/8 flat hd.	3
38	80576	SCREW—10-32 x 7/16 pan hd. (at bracket).	1
39	80579	SCREW—10-32 x 3/8 pan hd.	3
40	A-56302	SCREEN & BRACKET	1
		Includes	
	A-56304	BRACKET & BUSHING	1
41	56497	SPRING—recoil	1
42	71603	COVER—spring housing	1



# HOMELITE CHAIN SAW MODEL 9-26

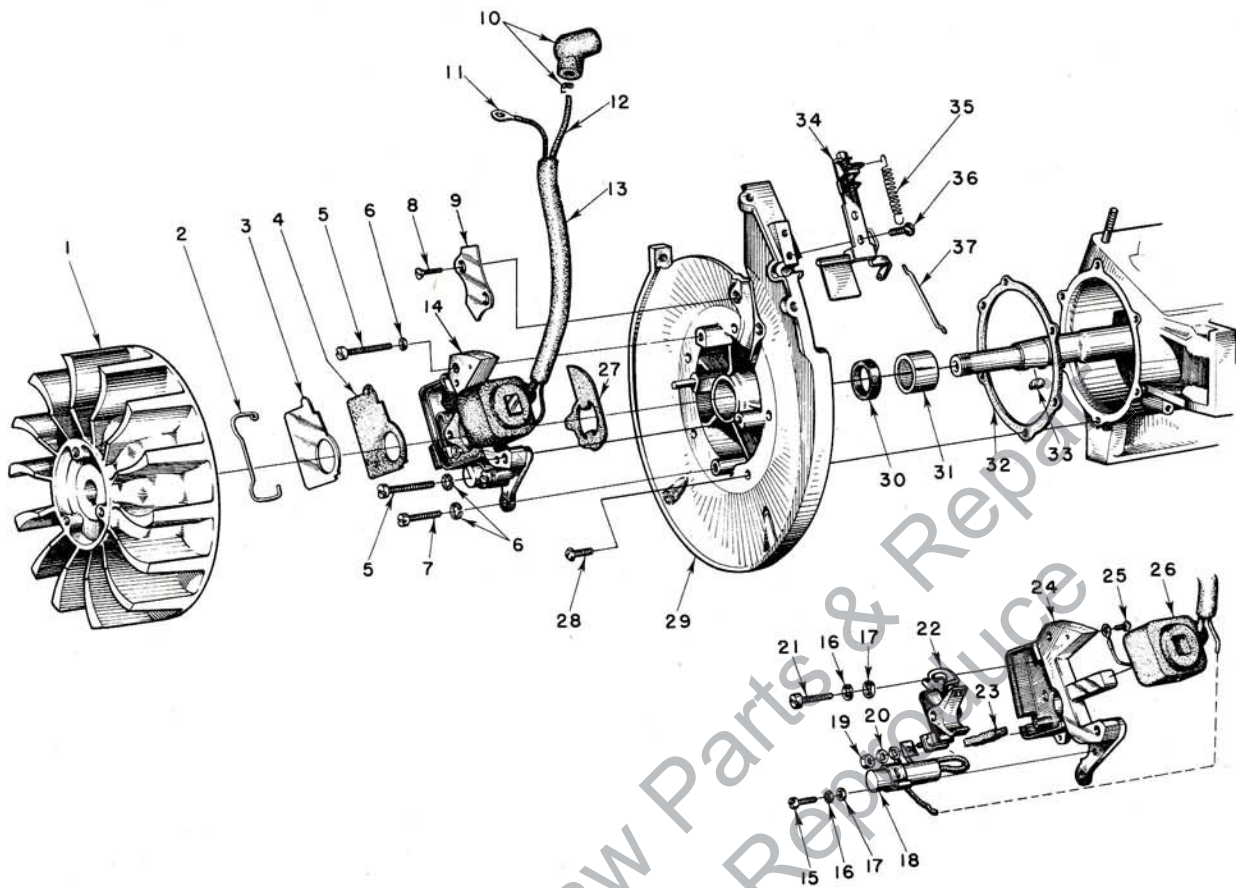


FIGURE 6 — IGNITION

MAY 1959

Index No.	Part No.	Description	No. Required	Index No.	Part No.	Description	No. Required
1	56276	ROTOR—magneto	1	20	55983	WASHER—terminal	1
2	55980	CLAMP—dust cover	1	21	55985	SCREW—breaker fastening	1
3	55979	COVER—dust	1	22	A-55971	SET OF POINTS	1
4	55978-1	GASKET—dust cover	1	23	55984	FELT—cam wiper	1
5	80660	SCREW—10-24 x 7/8 fil. hd.	2	24	56293	BOX—breaker, w/core	1
6	83046	WASHER—lock #10	3	25	55977	SCREW—coil ground lead	1
7	80595	SCREW—10-24 x 1/2 fil. hd.	1	26	55986	COIL	1
8	80598	SCREW—6-32 x 5/16 flat hd.	2	27	56292	WASHER—sealing (felt)	1
9	56250	CLAMP—lead	1	28	80576	SCREW—10-32 x 7/16 pan hd.	6
10	A-55373	TERMINAL—"Sparky" cover and spring	1	29	A-56648	BACK PLATE w/pivot post	1
11	56028	LEAD—ground	1			Includes	
12	55235-A	LEAD—high tension	1	30	56134	SEAL—garlock	1
13	56294	SLEEVE—insulating	1	31	56255	BEARING—needle	1
14	*	BREAKER BOX	1	32	56278	GASKET—back plate	1
		Includes items #15 thru #26		33	75078	KEY—rotor	1
15	55988	SCREW—condenser fastening	1	34	A-56272	GOVERNOR (complete)	1
16	83060	WASHER—lock	2	35	56247	SPRING—governor	1
17	84048	WASHER—flat	2	36	80629	SCREW—8-32 x 5/16 pan hd.	2
18	55987	CONDENSER (with lead and terminal)	1	37	56246	ROD—governor (to throttle stop lever)	1
19	55982	NUT—terminal	1				

\*Order Individual Parts

# HOMELITE CHAIN SAW MODEL 9-26

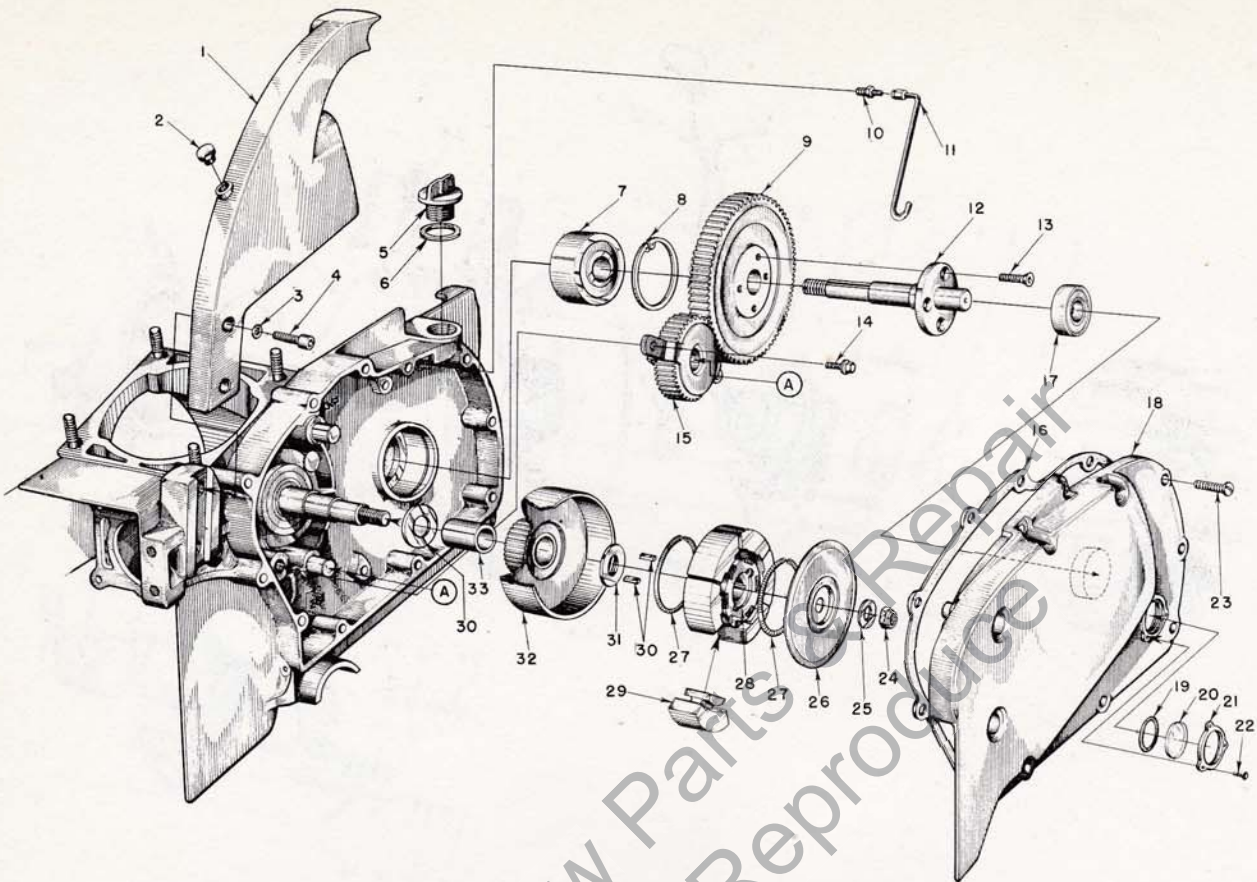


FIGURE 7 — TRANSMISSION PARTS

MAY 1959

Index No.	Part No.	Description	No. Required
1	A-56360	PLATE—handle bar mounting	1
2	56298	BUMPER—rubber	2
3	56628	WASHER— $\frac{5}{16}$ -18 flat	2
4	80671	SCREW— $\frac{3}{16}$ -18 x $1\frac{1}{8}$ socket hd.	3
5	A-56580	CAP—oil filler	1
6	56607	GASKET—filler cap	1
7	56219	BEARING—ball (double row)	1
8	28922	RING—snap	1
9	A-56586	DRIVEN GEAR—71 tooth (2.84:1 std. ratio)	1
	A-56588	DRIVEN GEAR—75 tooth (3.57:1 opt. ratio)	1
10	31733-1	ADAPTER—straight	1
11	A-56606	LINE—crankcase vent	1
12	56585	SHAFT—sprocket	1
13	80659	SCREW—12-28 x $\frac{1}{2}$ flat hd. Allen	4
14	80581	SCREW— $\frac{1}{4}$ -20 x $\frac{5}{8}$ hex hd.	2
15	A-56581	IDLER (gear & cage ass'y.)	1
16	56576	GASKET—gear case cover	1
17	72328	BEARING—ball (outboard spkt. support)	1
18	A-56699	COVER—drive case	1
		Includes	
19	55100	"O" RING	1

Index No.	Part No.	Description	No. Required
20	55099-1	WINDOW—inspection	1
21	55098	PLATE—window	1
22	80548	SCREW—binder hd. (self-tap)	3
	56601	DECAL (9-26)	1
23	80583	SCREW—10-32 x $\frac{3}{4}$ pan hd.	11
24	81116	NUT— $\frac{3}{8}$ -24 hex lock	1
25	55036	WASHER—clutch retaining	1
26	55126	COVER—clutch	1
	A-56139	CLUTCH	1
		Includes	
27	55123-A	SPRING—clutch	2
28	55075-1	SPIDER—clutch	1
29	A-55692	SHOE—clutch	6
30	55225-1	KEY—clutch	2
31	56132	WASHER—thrust	2
32	A-56574	DRIVE GEAR & DRUM—25 tooth	1
		(Standard 2.84:1 ratio)	
	A-56587	DRIVE GEAR & DRUM—21 tooth	1
		(Optional 3.67:1 ratio)	
33	56603	BEARING—bronze	1



# HOMELITE CHAIN SAW MODEL 9-26

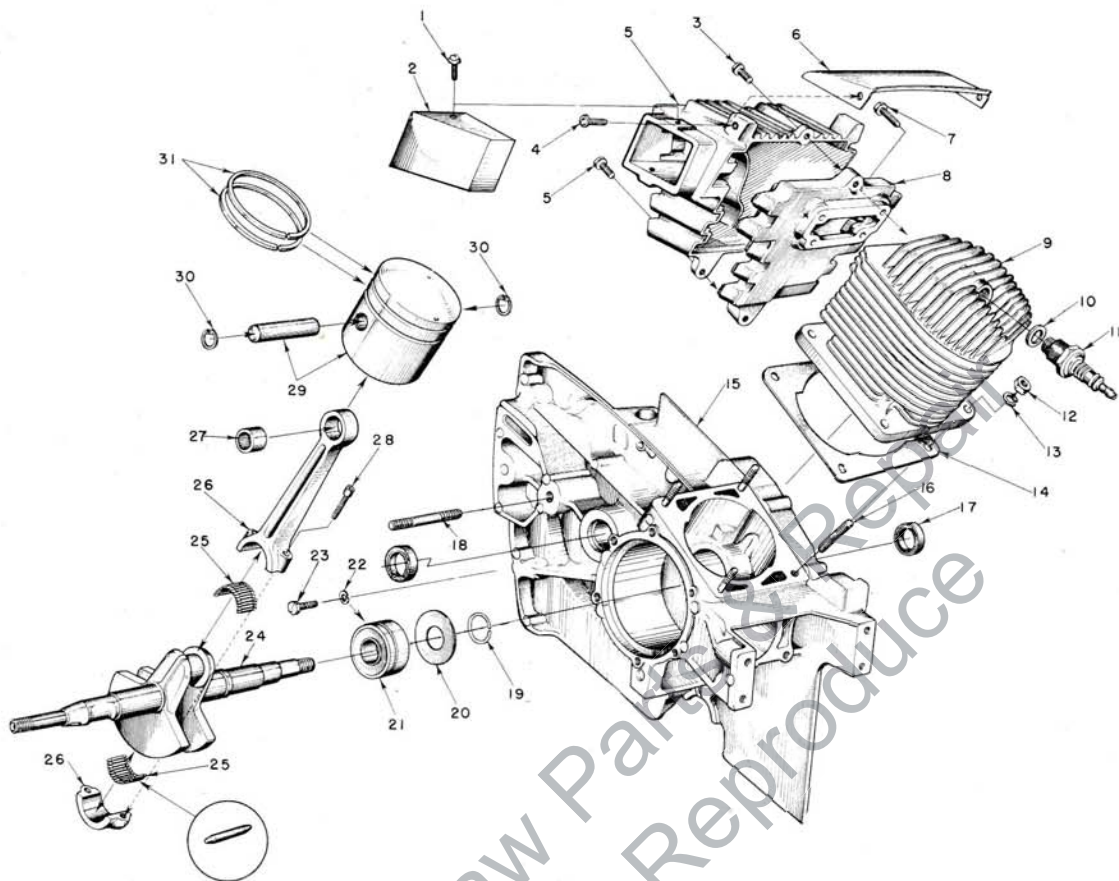


FIGURE 8 — ENGINE PARTS

MAY 1959

Index No.	Part No.	Description	No. Required	Index No.	Part No.	Description	No. Required
1	80579	SCREW—10-32 x 3/8 pan hd.	2	17	56256	SEAL—garlock	2
2	56691	CAP—muffer	1	18	56606	STUD—guide bar	2
3	80681	SCREW—1/4-20 x 1/2 hex hd.	2	19	56258	GASKET—crankcase sealing	1
4	80572	SCREW—10-32 x 5/8 pan hd.	2	20	56259	RING—snap	1
5	56164-A	BODY—muffer	1	21	56261	BEARING—main	1
6	56582	SHIELD—muffer	1	22	83061	WASHER—lock	2
7	80677	SCREW—1/4-20 x 1 1/16 hex hd.	4	23	19238-A	SCREW—bearing retaining	2
8	56163-A	ADAPTER—muffer	1	24	56056	CRANKSHAFT	1
9	55918	CYLINDER	1	25	AA-72206	ROLLERS (set of 31 needles)	1
10	25038	GASKET (included with spark plug)	1	26	A-56287	ROD—connecting, w/cap	1
11	72858-1	SPARK PLUG (Champion HO-3)	1			Includes	
12	81065-2	NUT—1/4-28 hex	4	27	71167	BEARING—piston pin	1
13	83009	WASHER—1/4 lock	4	28	80492	SCREW—10-32 x 1/2 Allen sock't. hd.	2
14	56277	GASKET—cylinder	1	29	A-56647	PISTON & PIN	1
15	A-56652	CRANKCASE (service)	1			Includes	
16	56470	STUD—cylinder	4	30	56290	RING—snap	2
				31	56291	RING—piston	2

# HOMELITE

## Authorized Sales and Service Branches

Homelite sales and service factory branches are located throughout the country. Field representatives and factory-trained servicemen are always available, ready and able to keep your Homelites running in top performance at all times. See the "Yellow Pages", in the telephone directory, for the address and phone number of your nearest Homelite Branch office.

<b>California</b> Alhambra (Los Angeles area) Fresno Sacramento S. San Francisco	<b>Missouri</b> Kansas City St. Louis	<b>Texas</b> Dallas Lufkin
<b>Colorado</b> Denver	<b>Nebraska</b> Omaha	<b>Utah</b> North Salt Lake
<b>Connecticut</b> Byram Hartford	<b>New Jersey</b> North Arlington Woodbridge	<b>Virginia</b> Alexandria Richmond Roanoke
<b>Florida</b> Jacksonville Miami	<b>New York</b> Buffalo Latham (Albany area) Rochester Syracuse	<b>Washington</b> Seattle Spokane
<b>Georgia</b> Atlanta	<b>North Carolina</b> Charlotte Raleigh	<b>West Virginia</b> Charleston Clarksburg
<b>Illinois</b>  Stone Park (Chicago area)	<b>Ohio</b>  Cincinnati Cleveland Toledo	<b>Wisconsin</b> Milwaukee
<b>Indiana</b> Indianapolis	<b>Oklahoma</b> Oklahoma City	<b>DOMINION OF CANADA</b> <b>TERRY MACHINERY CO., LTD.</b>
<b>Louisiana</b> Bossier City Metairie	<b>Oregon</b> Portland	<b>Quebec</b> Montreal Quebec City
<b>Maine</b> Orono	<b>Pennsylvania</b> Altoona Erie Harrisburg Hazleton Malvern Philadelphia Pittsburgh	<b>Alberta</b> Edmonton
<b>Maryland</b> Baltimore	<b>Tennessee</b> Knoxville Memphis	<b>British Columbia</b> Vancouver Prince George
<b>Massachusetts</b> Allston (Boston area)		<b>New Brunswick</b> Moncton
<b>Michigan</b> Detroit Grand Rapids		<b>Ontario</b> Ottawa Toronto Port Arthur
<b>Minnesota</b> St. Paul		