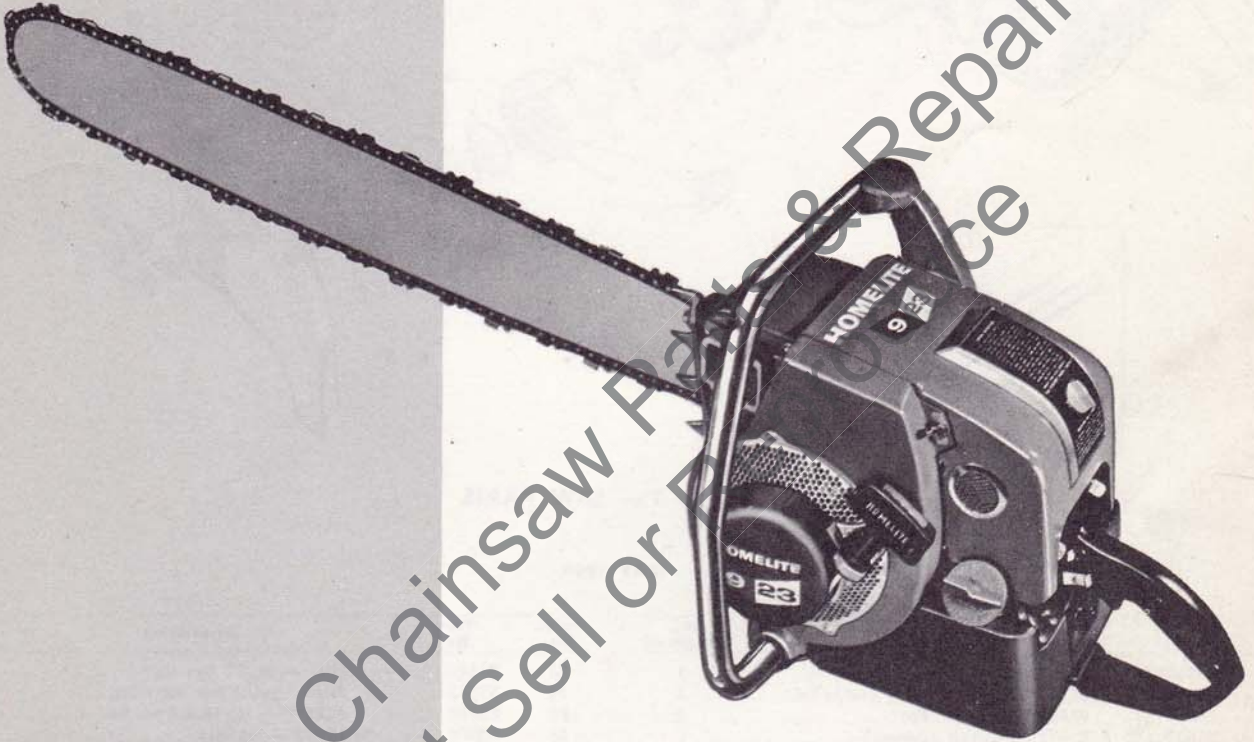
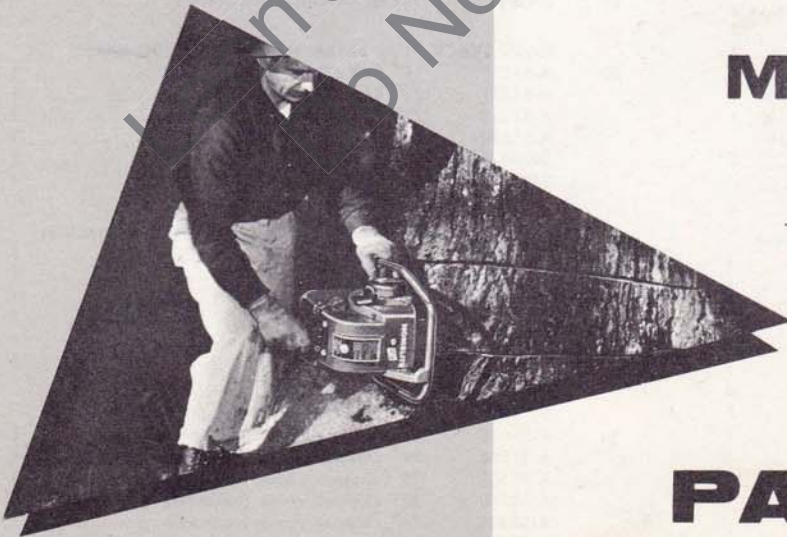


# HOMELITE

## Chain Saw



**Model 9-23**



**PARTS LIST**

**May 1959**



# HOMELITE CHAIN SAW MODEL 9-23

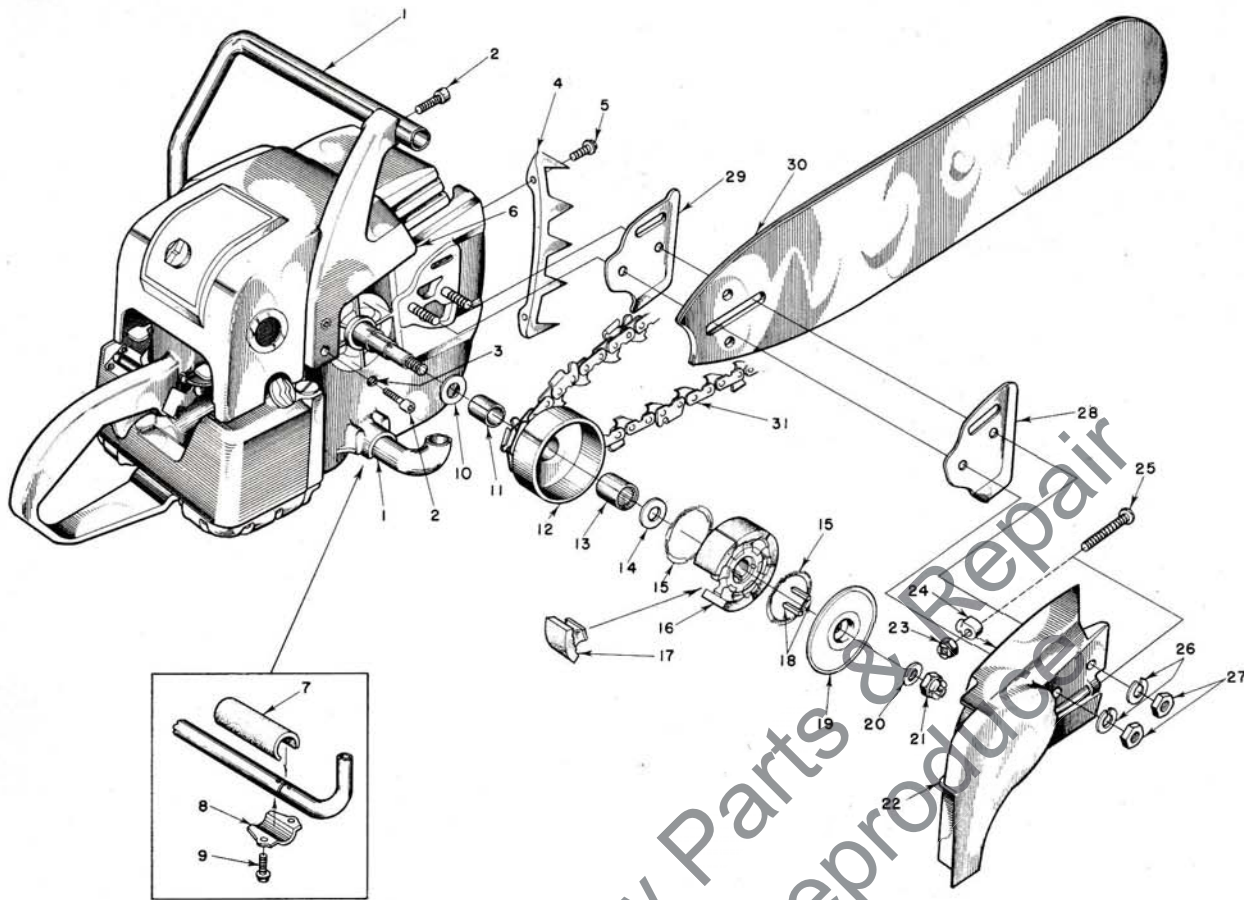


FIGURE 1 — SAW PARTS

MAY 1959

Index No.	Part No.	Description	No. Required	Index No.	Part No.	Description	No. Required
1	A-56267	HANDLE BAR	1	23	81123	NUT — 3/16-18 hex lock	1
2	80671	SCREW — 5/16-18 x 1 1/8 socket hd.	3	24	55613	PIN — guide bar adjusting	1
3	56628	WASHER — 3/16-18 flat	2	25	80617	SCREW — 3/16-18 x 2 rd. hd.	1
4	55632	PLATE — spiked bumper	1	26	83018	WASHER — 3/8 lock	2
5	80573	SCREW — 1/4-20 x 13/16 hex hd.	2	27	81019	NUT — 3/8-16 hex	2
6	A-56360	PLATE — handle bar mounting	1	28	55667	PLATE — guide bar (outer)	1
	56298	BUMPER — rubber (not shown)	2	29	55666	PLATE — guide bar (inner)	1
7	56281	CUSHION — handle bar	2				
8	56282	CLAMP — handle bar	2				
9	80676	SCREW — 12-24 x 5/8 hex hd.	4	30		HARD TRACK PLUS EXTRA HARD TIP GUIDE BARS	
10	56236	WASHER — thrust, inner	1	A-51517	17" BAR (.063" gauge)	1	
11	56231	RACE — inner	1	A-51521	21" BAR (.063" gauge)	1	
12	A-56615	SPROCKET & DRUM (standard 7-tooth — 1/2 pitch)	1	A-51525	25" BAR (.063" gauge)	1	
	A-56299	SPROCKET & DRUM (Optional 7-tooth — 7/16 pitch)	1	A-51539	30" BAR (.063" gauge)	1	
				52298-1	36" BAR (.063" gauge)	1	
				52299-1	42" BAR (.063" gauge)	1	
13	56230	BEARING—needle (included with Sprocket & Drum)	1			1/2" PITCH OREGON #10C CHIPPER CHAIN (standard)	
14	56132	WASHER — thrust, outer	1	31	A-51927	17" CHAIN w/kit	1
	A-56100	CLUTCH	1	AA-73340	21" CHAIN w/kit	1	
		Includes		AA-73342	25" CHAIN w/kit	1	
15	55123-A	SPRING — clutch	2	AA-73344	30" CHAIN w/kit	1	
16	55075-1	SPIDER — clutch	1	AA-73346	36" CHAIN w/kit	1	
17	55076-1	SHOE — clutch	6	AA-73350	42" CHAIN w/kit	1	
18	55225-1	KEY — clutch	2			3/16" PITCH #62C CHIPPER CHAIN (optional)	
19	56238	COVER — clutch	1	31	A-51535	17" chipper chain (optional)	1
20	55036	WASHER — clutch retaining	1		A-51536	21" chipper chain (optional)	1
21	81116	NUT — 3/8-24 hex lock	1		A-51537	25" chipper chain (optional)	1
22	A-56365	COVER — drive case	1		A-51540	30" chipper chain (optional)	1
		Includes			A-52306	36" chipper chain (optional)	1
	56598	DECAL (9-23)	1		A-52307	42" chipper chain (optional)	1

NOTE: Sizes listed above for bars and chain loops refer to usable length from saw bumper plate to nose of bar.

# HOMELITE CHAIN SAW MODEL 9-23

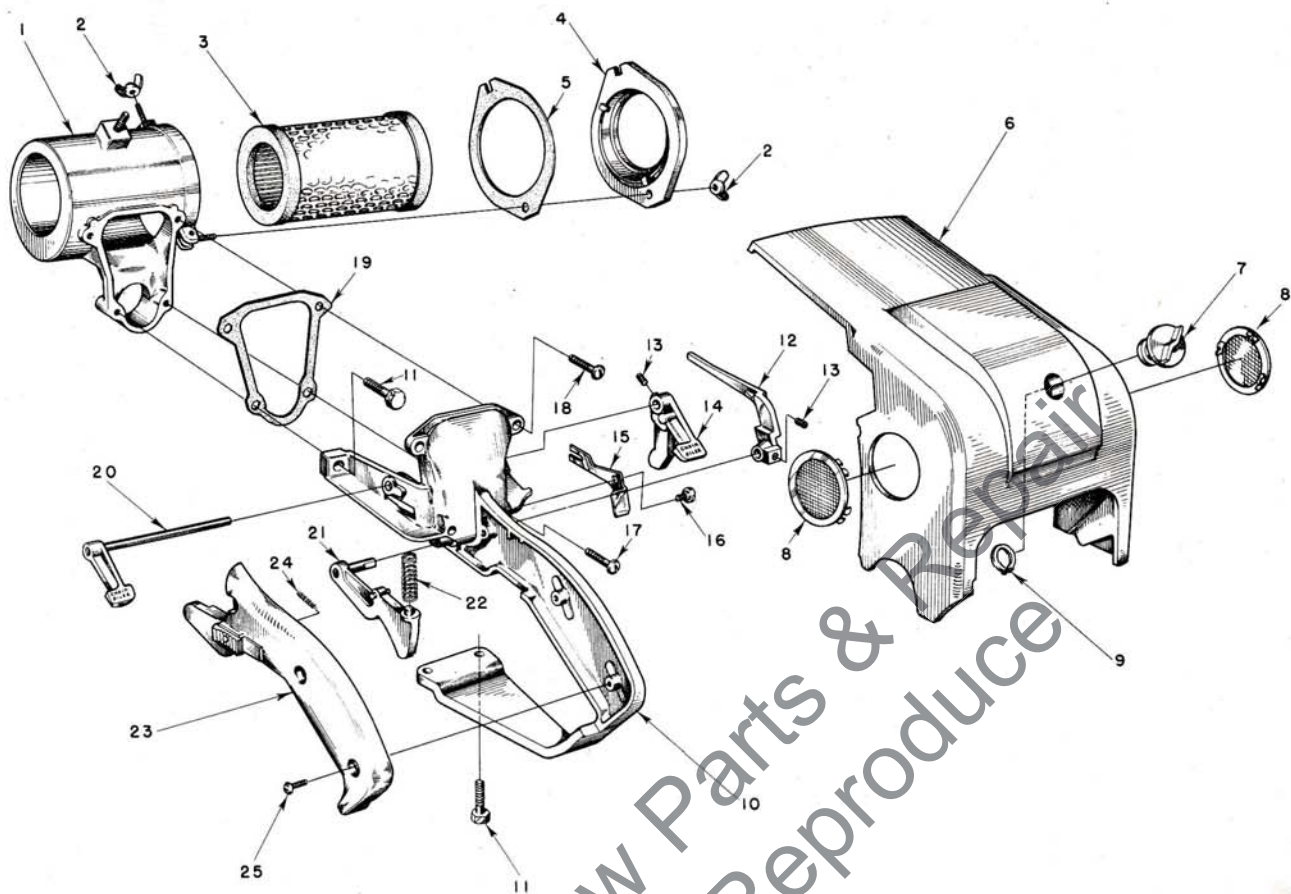


FIGURE 2—ENGINE CONTROL PARTS

MAY 1959

Index No.	Part No.	Description	No. Required
1	A-56347	CASE—air filter	1
2	81129	WING-NUT	2
3	56526	ELEMENT—air filter (WIX)	1
4	A-56351	COVER—air filter case w/ gasket	1
		Includes	
5	56352	GASKET—(cement to filter cover)	1
6	56082	SHROUD—cylinder	1
7	A-56521	NUT—mounting w/insert	1
8	74099-1	PLUG—button	2
9	56522	RING—snap	1
	56400	DECAL—"HOMELITE"	1
	56599	DECAL (9-23)	1
	56363-A	DECAL—starting instructions	1
10	A-56342	HANDLE—throttle w/bushings	1
11	80573	SCREW— $\frac{1}{4}$ -20 x $\frac{1}{16}$ hex hd.	4
12	56105	ARM—throttle	1

Index No.	Part No.	Description	No. Required
13	80350	SCREW—set	2
14	56227	LEVER—oiler	1
15	56241	LEVER—choke	1
16	56242	SCREW—choke lever	1
17	80624	SCREW—10-32 x 1 pan hd.	2
18	80625	SCREW—10-32 x $\frac{1}{2}$ pan hd.	2
19	56280	GASKET—filter case	1
20	A-56358	SHAFT & LEVER—oiler	1
21	A-56343	TRIGGER—throttle	1
22	55045-A	SPRING—throttle trigger	1
23	A-56345	COVER—grip	1
		Includes	
	AA-55282	LOCK—throttle	1
		Includes	
		SPRING	1
24	72970	SPRING	1
25	80560	SCREW—8-32 x $\frac{1}{2}$ pan hd.	3



# HOMELITE CHAIN SAW MODEL 9-23

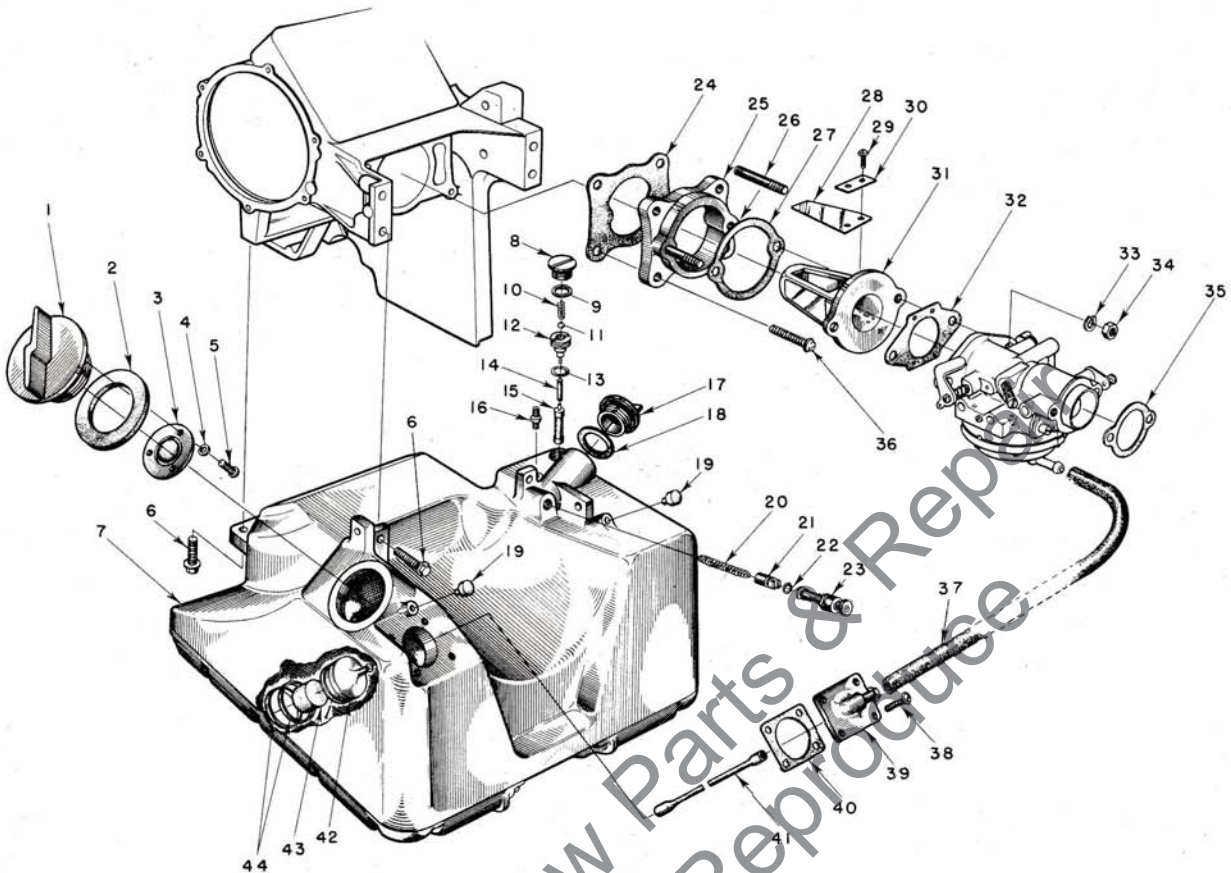


FIGURE 3 — FUEL INDUCTION SYSTEM

MAY 1959

Index No.	Part No.	Description	No. Required	Index No.	Part No.	Description	No. Required
1	A-56334	CAP—fuel	1	22	74388	"O" RING	1
		Includes		23	71764	BUTTON—plunger	1
2	56335	GASKET	1	24	56279	GASKET—spacer	1
3	A-55301-C	VALVE—relief	1	25	56075	SPACER—reed adapter	1
4	83083	WASHER—lock	3	26	55945	STUD	2
5	80592	SCREW—3-48 x 1/4 rd. hd.	3	27	55946	GASKET—reed adapter	1
6	80573	SCREW—1/4-20 x 1 1/8 hex hd.	4	28	55941	REED	4
7	A-56328	FUEL TANK	1	29	80658	SCREW—4-40 x 3/16 pan hd.	8
8	AA-55167	CAP—oil supply line	1	30	55942	PLATE—reed	4
9	55107	GASKET	1	31	55932	ADAPTER—reed valve	1
10	55288-A	SPRING—check valve	1	32	55553	GASKET—carburetor	1
11	25527	BALL—check, 3/32 dia.	1	33	83009	WASHER—1/4 lock	2
12	55109-A	SEAT—check valve	1	34	81013	NUT—1/4-20 hex	2
13	55110	GASKET	1	35	56313	GASKET—air intake	1
14	56262	SLEEVE—flexible, oil	1	36	80583	SCREW—10-32 x 3/4 pan hd.	4
15	AA-55259-A	PICK-UP—oil	1	37	56326	FUEL LINE	1
16	A-55824	VALVE—check	1	38	80605	SCREW—6-32 x 3/16 pan hd.	4
17	A-56330	CAP—chain oil	1	39	A-56650	FITTING—outlet	1
		Includes		40	56333	GASKET—outlet fitting	1
18	72280	GASKET	1	41	55805	SLEEVE—flexible	1
19	56298	BUMPER—rubber	2	42	A-56200	STRAINER—fuel, w/brass nail	1
20	71762	SPRING—plunger	1			Includes	
21	A-74406	TUBE—plunger	1	43	74374	FILTER—felt	1
		Includes		44	56196	BUMPER—rubber	2

# HOMELITE CHAIN SAW MODEL 9-23

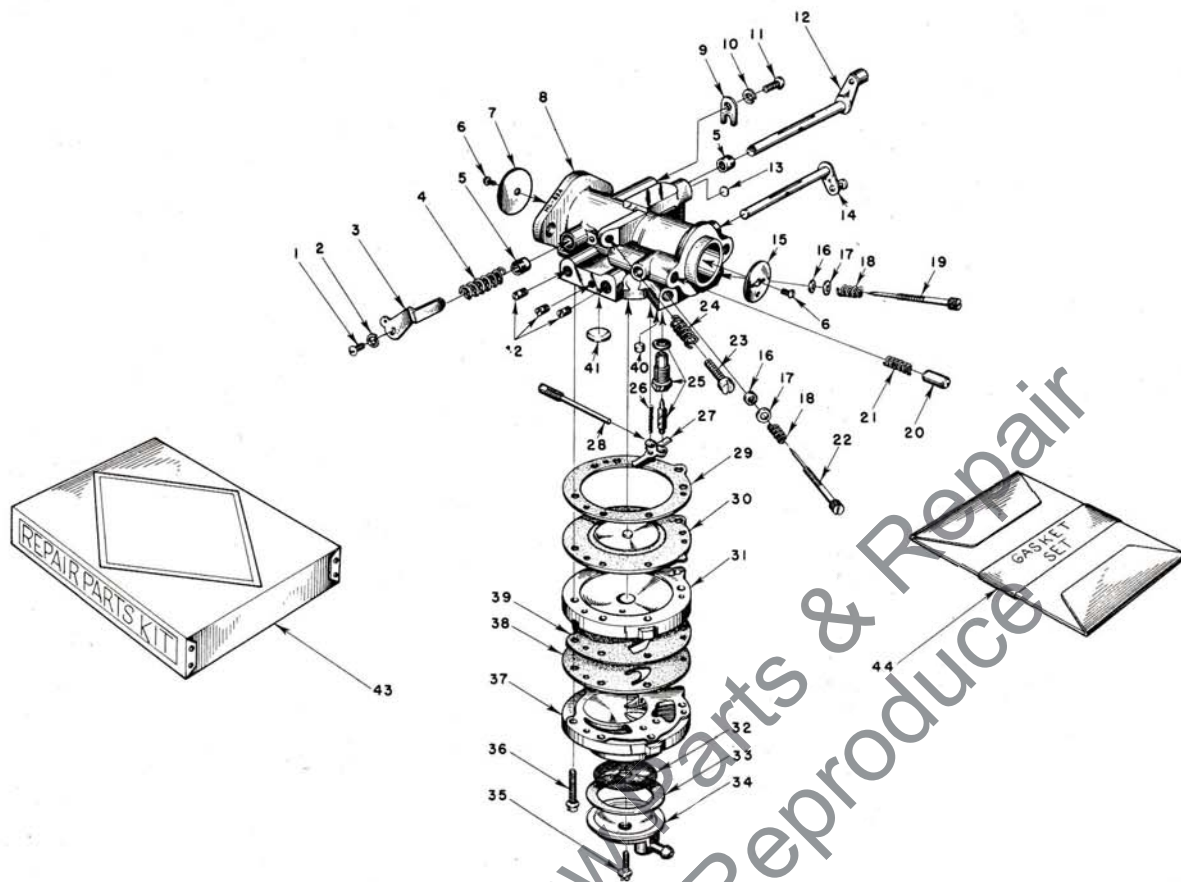


FIGURE 4 — TILLOTSON HL-62A CARBURETOR

MAY 1959

Index No.	Part No.	Description	No. Required	Index No.	Part No.	Description	No. Required
	A-56308	CARBURETOR—Tillotson HL-62A	1	23	*71509	SCREW—idle stop	1
		Includes		24	*28064	SPRING—idle stop screw	1
1	*71521	SCREW—4.36 x 1/2 rd. hd.	1	25	*A-55761	INLET NEEDLE & SEAT	1
2	*83008	WASHER—#4 lock	1			Includes	
3	56224	LEVER—throttle stop	1		55344	GASKET—inlet seat	1
4	56630	SPRING—throttle friction	1	26	*55759	SPRING—control lever	1
5	72812	BUSHING—throttle shaft	2	27	*55747	LEVER—inlet control	1
6	*80012	SCREW—shutter	2	28	*A-55762	PIN—inlet lever fulcrum	1
7	75532	SHUTTER—throttle	1	29	†55754	GASKET—main diaphragm	1
8	A-56643	BODY—service	1	30	†A-55760	DIAPHRAGM—main	1
9	73086	CLIP—throttle shaft	1	31	55749	COVER—main diaphragm	1
10	83000	WASHER—#8 lock	1	32	*55752	SCREEN—fuel strainer	1
11	73088	SCREW—8-32 x 3/16 flat hd.	1	33	†55751	GASKET—pump strainer	1
12	A-56641	SHAFT & LEVER—throttle	1	34	55750	COVER—fuel pump	1
13	56642	PLUG—welch, 3/16 dia.	1	35	*55756	SCREW—pump cover retaining	1
14	A-56639	SHAFT & LEVER—choke	1	36	55316	SCREW—body, with lockwasher	6
15	73263	SHUTTER—choke	1	37	55748	BODY—fuel pump	1
16	†75733	PACKING—adjustment screw	2	38	†55753	DIAPHRAGM—fuel pump	1
17	*75735	WASHER—adjustment screw	2	39	55881	GASKET—pump diaphragm	1
18	*73075	SPRING—adjustment screw	2	40	*55763	PLUG—channel	1
19	*56644	SCREW—main adjustment	1	41	*30818	PLUG—3/8 dia. welch	1
20	71494	PIN—choke friction	1	42	73067	PLUG—8-32 headless	3
21	73264	SPRING—choke friction	1	43	56649	REPAIR PARTS (Kit #RK-402)	1
22	*56627	SCREW—idle adjustment	1	44	*77342	GASKET SET (GS-145)	1

\*Included in Repair Parts Kit RK-402.

†Included in Gasket Set GS-145.

Always furnish saw model and serial number when ordering parts



# HOMELITE CHAIN SAW MODEL 9-23

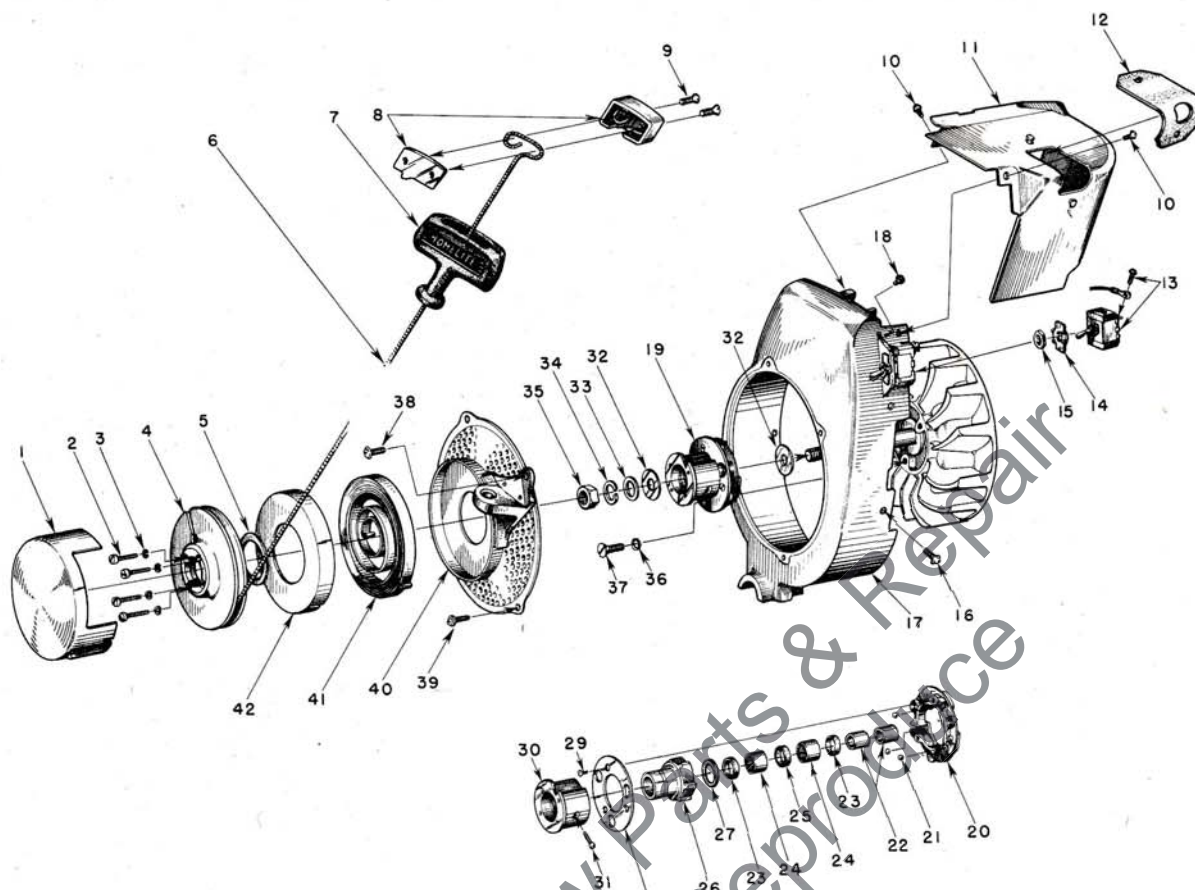


FIGURE 5 — STARTER PARTS

MAY 1959

Index No.	Part No.	Description	No. Required
1	AA-73234-1	COVER—starter pulley	1
	56598	DECAL (9-23)	1
2	80475	SCREW—6-32 x 3/4 fil. hd.	4
3	83004	WASHER—lock #6	4
4	55597-1	PULLEY—starter	1
5	71588	SHIM—pulley	as req.
6	55898	ROPE—starter	1
7	55937	GRIP—starter	1
8	A-56081	INSERT—grip	1
		Includes	
9	80619	SCREW—10-32 x 3/8 flat hd.	2
10	80577	SCREW—8-32 x 3/8 pan hd.	2
11	A-56337	SHIELD—cylinder	1
12	56339	COVER—spark plug	1
13	A-55877	SWITCH—toggle	1
14	72085-A	PLATE—indicating (on-off)	1
15	72084-A1	NUT (included with toggle switch)	1
16	80579	SCREW—10-32 x 3/8 pan hd.	5
17	A-56297	SHROUD—air	1
		Includes	
18	56298	BUMPER—rubber	2
19	A-56493	BALL DRIVE	1
		Includes index nos. 20 through 31	
20	71563-C	PLATE—ball drive	1
21	30355-1	BALL—steel	3
22	74221	RACE—inner	2

Index No.	Part No.	Description	No. Required
	AA-72306-1	RATCHET & BEARING	1
		Includes	
23	71597	SEAL—garlock	2
24	71596	BEARING—needle	2
25	71595	WICK—felt	1
26	AA-73549	RATCHET	1
		Includes	
27	73525	WASHER—formica	1
28	71570-B	RETAINER—ball	1
29	80464	SCREW—5-40 x 5/16 flat hd.	3
30	A-56519	HUB—ratchet	1
		Includes	
31	72295-A	SCREW—ratchet hub	1
32	55652	WASHER—thrust	2
33	84055	WASHER—7/16 flat, aluminum	1
34	83019	WASHER—7/16 lock	1
35	81110	NUT—7/16-20 hex-jam	1
36	83074	WASHER—1/4 countersunk, lock	3
37	80173	SCREW—1/4-20 x 3/8 flat hd.	3
38	80576	SCREW—10-32 x 1/8 pan hd. (at bracket)	1
39	80579	SCREW—10-32 x 3/8 pan hd.	3
40	A-56302	SCREEN & BRACKET	1
		Includes	
	A-56304	BRACKET & BUSHING	1
41	56497	SPRING—recoil	1
42	71603	COVER—spring housing	1



# HOMELITE CHAIN SAW MODEL 9-23

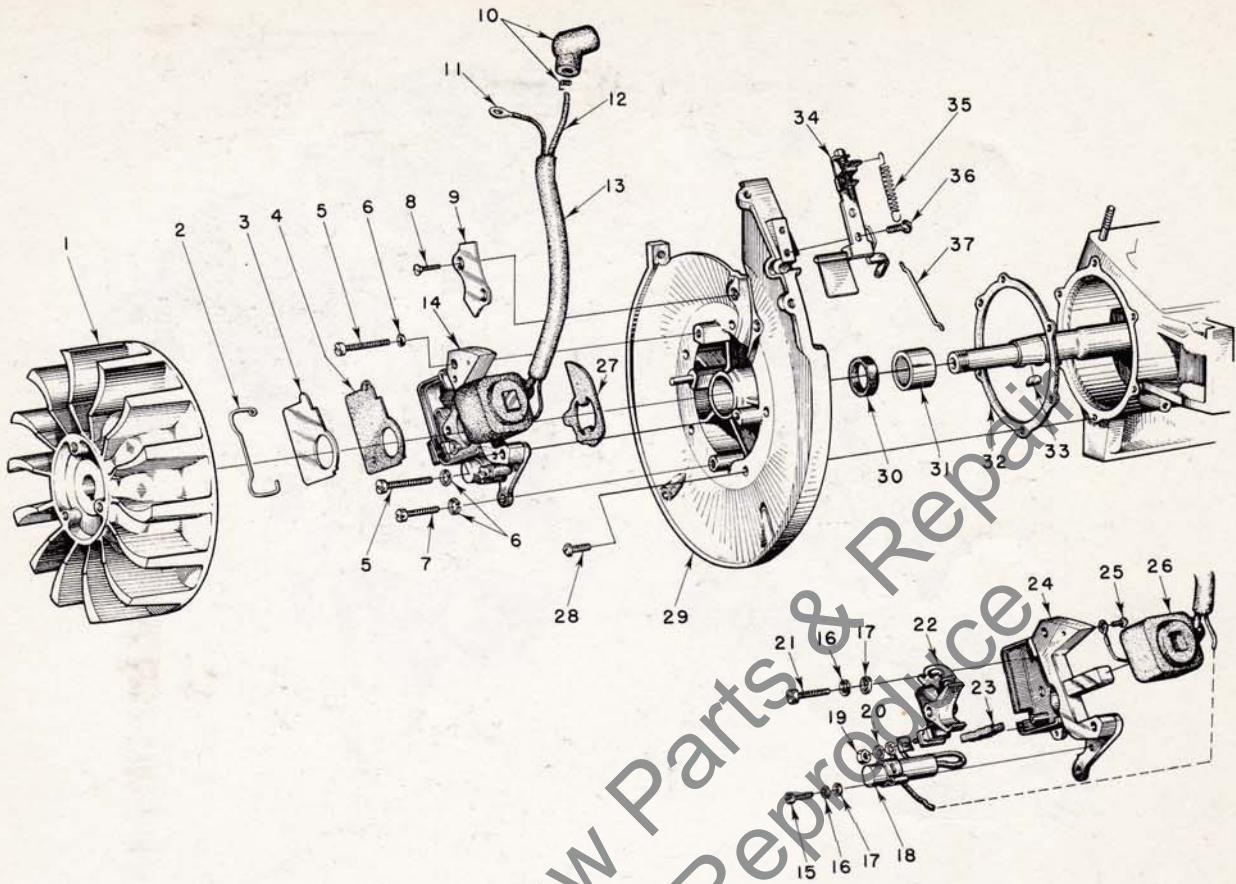


FIGURE 6 — IGNITION

MAY 1959

Index No.	Part No.	Description	No. Required
1	56276	ROTOR—magneto	1
2	55980	CLAMP—dust cover	1
3	55979	COVER—dust	1
4	55978-2	GASKET—dust cover	1
5	80660	SCREW—10-24 x 7/8 fl. hd.	2
6	83046	WASHER—lock #10	3
7	80595	SCREW—10-24 x 1/2 fl. hd.	1
8	80598	SCREW—6-32 x 3/8 flat hd.	2
9	56250	CLAMP—lead	1
10	A-55373	TERMINAL—"Sparky" cover and spring	1
11	56028	LEAD—ground	1
12	55235-A	LEAD—high tension	1
13	56294	SLEEVE—insulating	1
14	*	BREAKER BOX Includes items #15 thru #26	1
15	55988	SCREW—condenser fastening	1
16	83060	WASHER—lock	2
17	84048	WASHER—flat	2
18	55987	CONDENSER (with lead and terminal)	1
19	55982	NUT—terminal	1

Index No.	Part No.	Description	No. Required
20	55983	WASHER—terminal	1
21	55985	SCREW—breaker fastening	1
22	A-55971	SET OF POINTS	1
23	55984	FELT—cam wiper	1
24	56293	BOX—breaker, w/core	1
25	55977	SCREW—coil ground lead	1
26	55986	COIL	1
27	56292	WASHER—sealing (felt)	1
28	80576	SCREW—10-32 x 3/8 pan hd.	6
29	A-56648	BACK PLATE w/pivot post Includes	1
30	56134	SEAL—garlock	1
31	56255	BEARING—needle	1
32	56278	GASKET—back plate	1
33	75078	KEY—rotor	1
34	A-56272	GOVERNOR (complete)	1
35	56247	SPRING—governor	1
36	80629	SCREW—8-32 x 3/8 pan hd.	2
37	56246	ROD—governor (to throttle stop lever)	1

\*Order Individual Parts



# HOMELITE CHAIN SAW MODEL 9-23

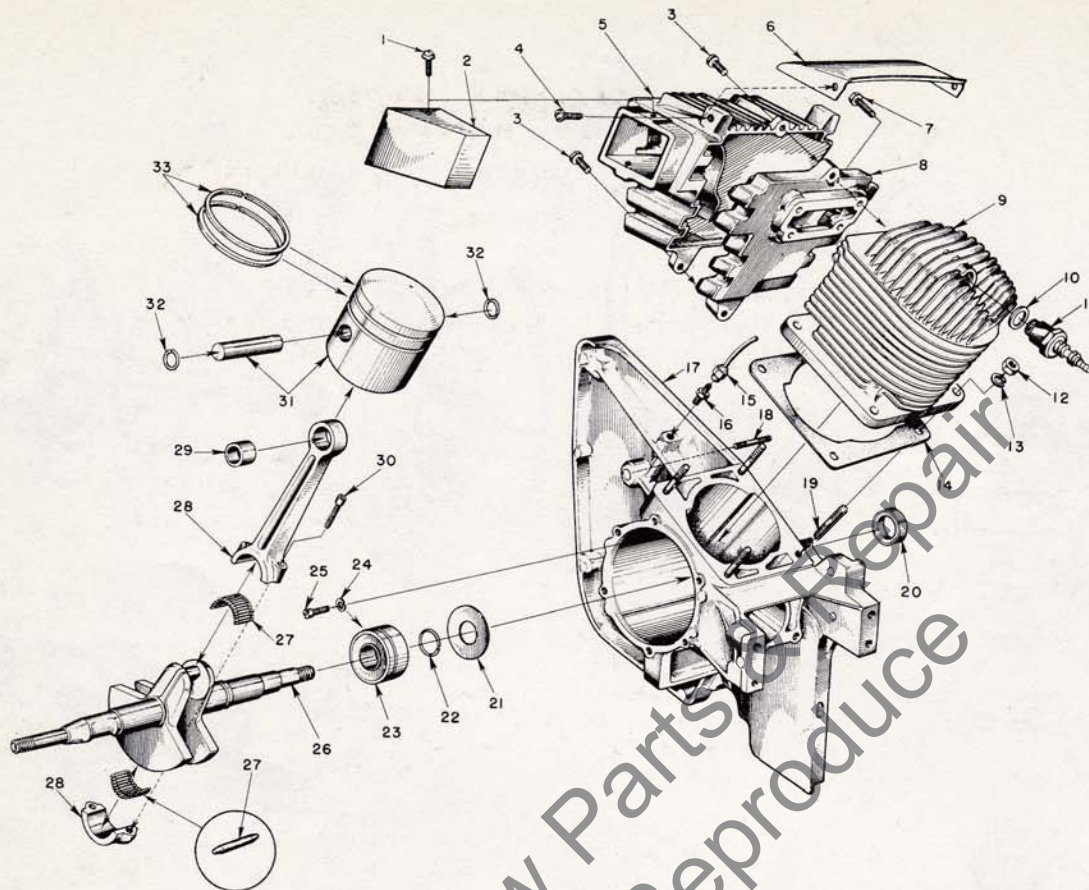


FIGURE 7 — ENGINE PARTS

MAY 1959

Index No.	Part No.	Description	No. Required	Index No.	Part No.	Description	No. Required
1	80579	SCREW—10-32 x 3/8 pan hd.	2	19	56470	STUD—cylinder	4
2	56691	CAP—muffer	1	20	56256	SEAL—garlock	1
3	80681	SCREW—1/4-20 x 1/2 hex hd.	2	21	56258	GASKET—crankcase sealing	1
4	80572	SCREW—10-32 x 5/8 pan hd.	2	22	56259	RING—snap	1
5	56164-A	BODY—muffer	1	23	56261	BEARING—main	1
6	56582	SHIELD—muffer	1	24	83061	WASHER—lock	2
7	80677	SCREW—1/4-20 x 1 1/16 hex hd.	4	25	19238-A	SCREW—bearing retaining	2
8	56163-A	ADAPTER—muffer	1	26	56056	CRANKSHAFT	1
9	55918	CYLINDER	1	27	AA-72206	ROLLERS (set of 31 needles)	1
10	25038	GASKET (included with spark plug)	1	28	A-56287	ROD—connecting, w/cap	1
11	72858-1	SPARK PLUG (Champion HO-3)	1			Includes	
12	81065-2	NUT—1/4-28 hex	4	29	71167	BEARING—piston pin	1
13	83009	WASHER—1/4, lock	4	30	80492	SCREW—10-32 x 1/2, Allen sock't. hd.	2
14	56277	GASKET—cylinder	1	31	A-56647	PISTON & PIN	1
15	A-56336	LINE—chain oil	1			Includes	
16	31733-1	ADAPTER—straight	1	32	56290	RING—snap	2
17	A-56651	CRANKCASE (service)	1	33	56291	RING—piston	2
		Includes					
18	55623	STUD—guide bar	2				