

HOMELITE®

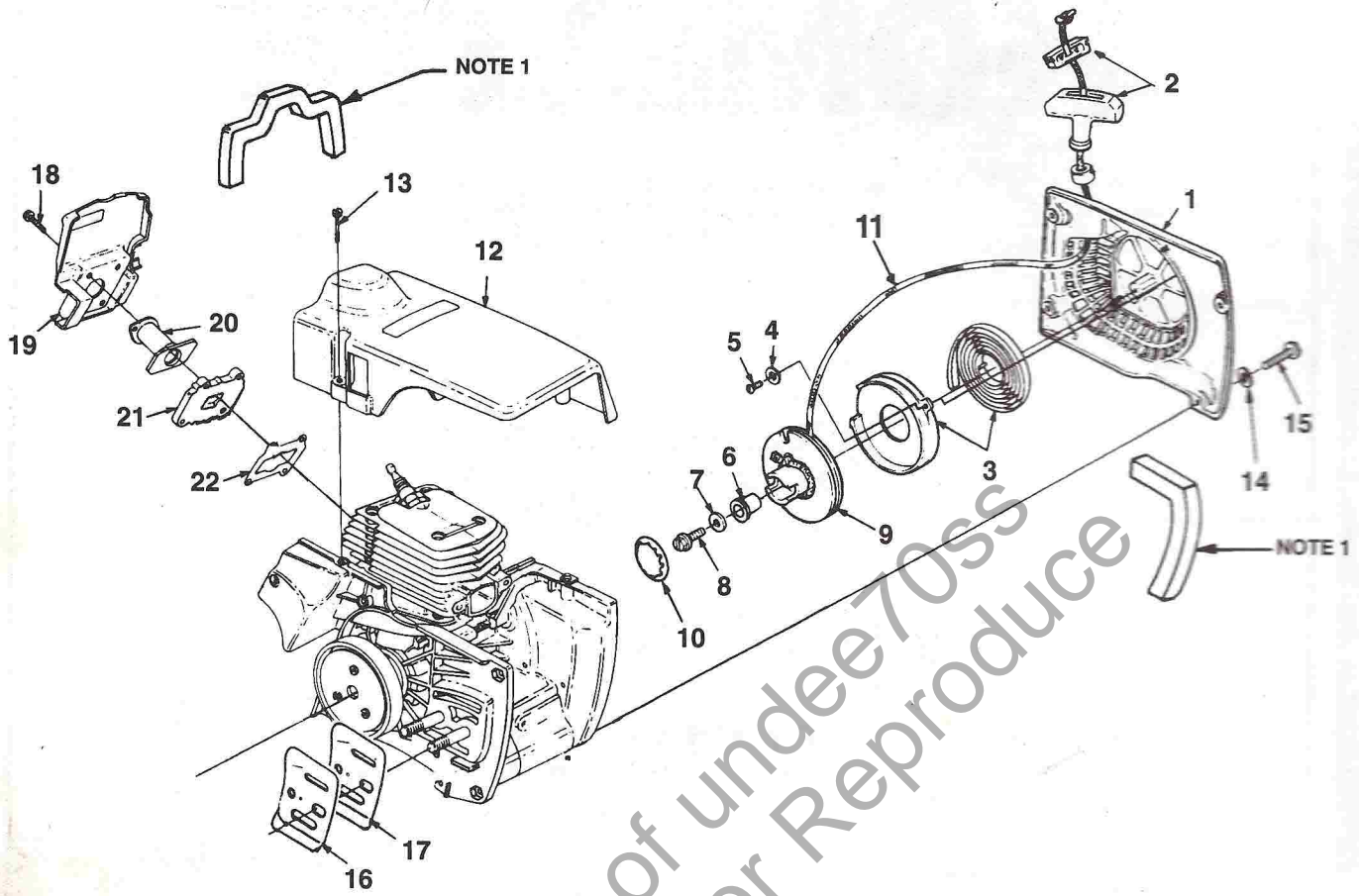
PARTS LIST

8800 CHAIN SAW

UT10731

Courtesy of www.unitedcross.com
Do Not Sell or Reproduce

PART NO. 19018
Printed in U.S.A.

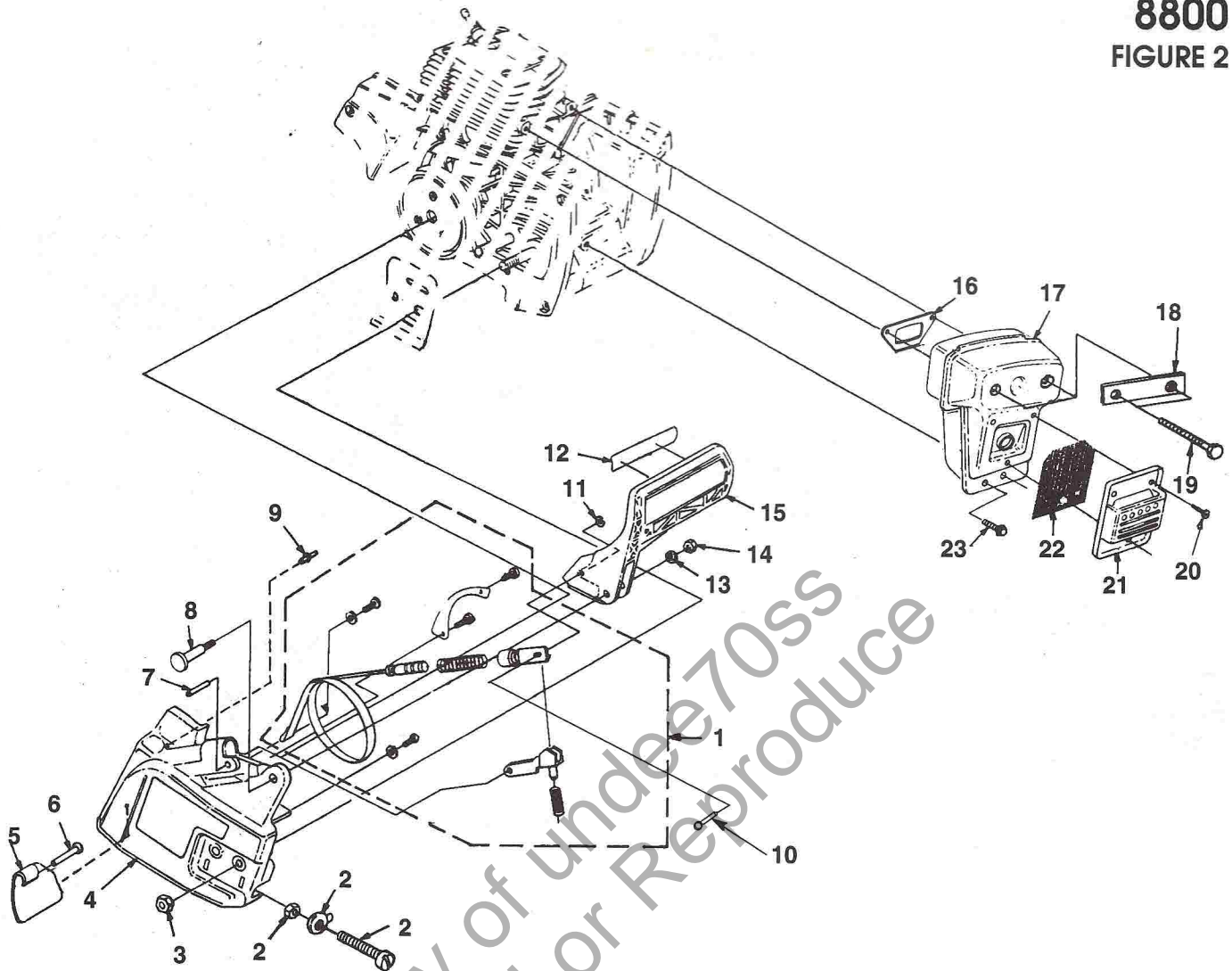


PARTS LIST-FIGURE 1

NO.	PART NO.	DESCRIPTION	QTY.
1	•A-02128	STARTER-Complete	1
2	A-69962-B	GRIP-Starter w/Insert	1
3	A-98067	SPRING & RETAINER	1
4	84025	WASHER-Flat (#8)	2
5	82528	SCREW-Thread Form. (6 X 3/8")	2
6	97992-A	BUSHING-Starter Post	1
7	58763	WASHER-Retaining (23/32 OD), (.213 ID)	1
8	82409	SCREW-Thread Form. (#10-14 X5/8")	1
9	•A-97990-C	PULLEY & ROPE	1
10	02505	SPRING-Grip	1
11	A-00518	ROPE-Starter	1
12	•A-02121	COVER-Cylinder	1
13	93397-A	SCREW-Cylinder Cover	3
14	84003	WASHER-Flat (#10)	4
15	82562	SCREW-Pan Hd. (10-24 X 5/8")	4
16	70400	PLATE-Guide Bar	1
17	70399	PLATE- Guide Bar (Inner)	1
18	82248	SCREW-Mach. Hex Hd. (8-32 X 3/4")	4
19	97338-1A	BAFFLE-Cylinder	1
20	97263-B	BOOT-Intake	1
21	02822	ADAPTOR-Intake	1
22	04635	GASKET-Intake	1

•ASSEMBLIES

NOTE 1: A-03611-A FOAM KIT



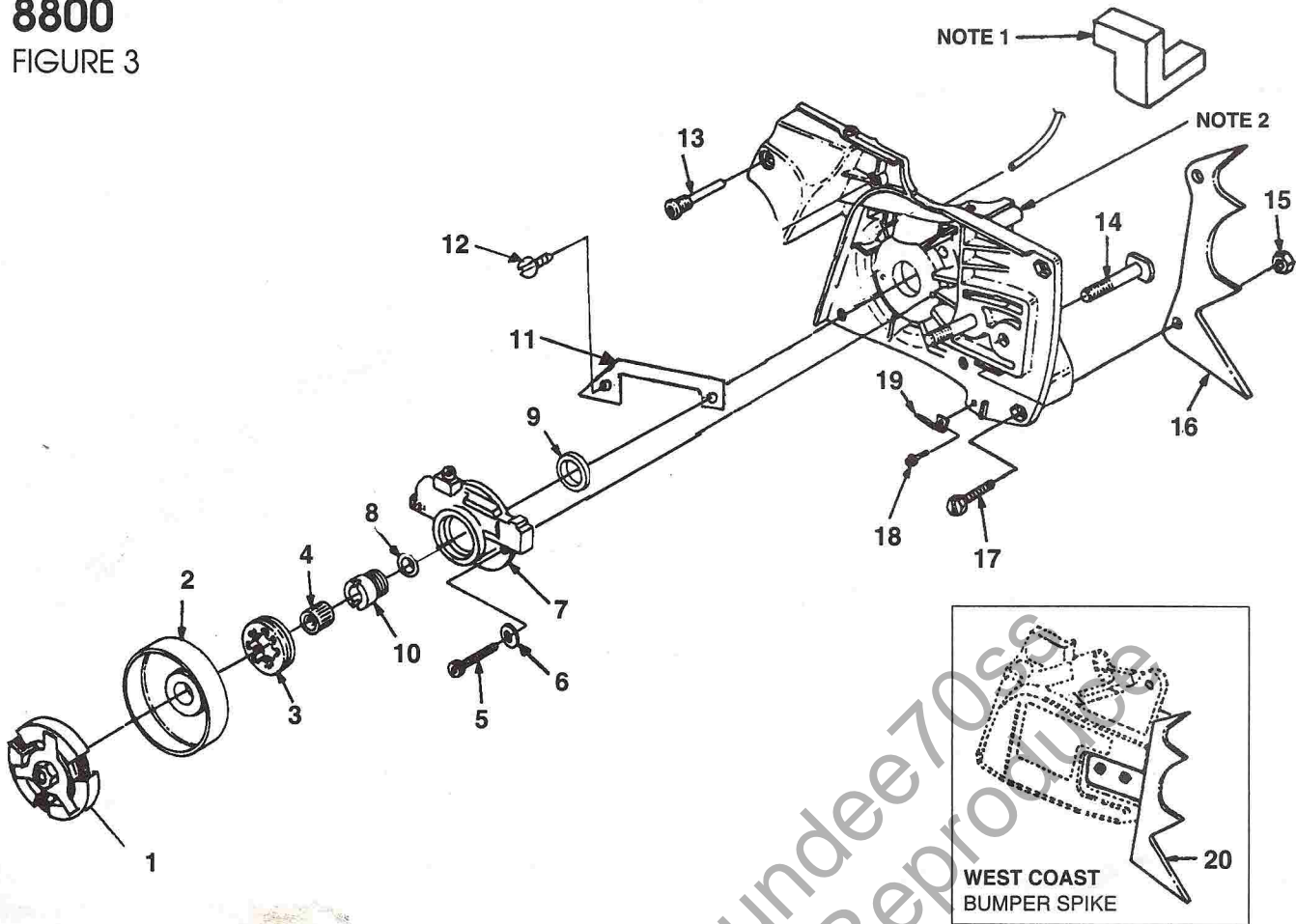
PARTS LIST-FIGURE 2

NO.	PART NO.	DESCRIPTION	QTY.
1	• A-04888	BRAKE BAND ASSY.	1
2	• A-04889	GUIDE BAR ADJUSTER	1
3	81089-2	NUT-Hex (10-24)	2
4	A-98727-A	COVER-Drive Case	1
5	04634	SAWDUST SHIELD	1
6	85154	RIVET-Pan Hd. (.187 X .381)	1
7	98456	PIN (5M X 16MM)	1
8	98461	SCREW-Shoulder (M5)	1
9	97331	PIN-Shoulder Dowel	1
10	98422-A	PIN (.156 dia.)	1
11	01820	RING-Snap	1
12	02661	DECAL-Handguard	1
13	83203	WASHER-Belleville (12MM)	1
14	98457	NUT (5MM)	1
15	98740	HANDGUARD	1
16	97682-B	GASKET-Muffler	1
17	A-04429	MUFFLER	1
18	04431-A	PLATE-Retaining	1
19	82592	SCREW-Hex Cap (1/4-20 X 3 1/4")	2
20	80983	SCREW-Machine Hex Hd. (8-32 X 1/2")	3
21	A-98747	CAP-Muffler	1
22	98827	SCREEN-Spark Arrestor	1
23	82555-1	SCREW-Truss Hd. (10-24 X 3/4")	2

•ASSEMBLIES

8800

FIGURE 3

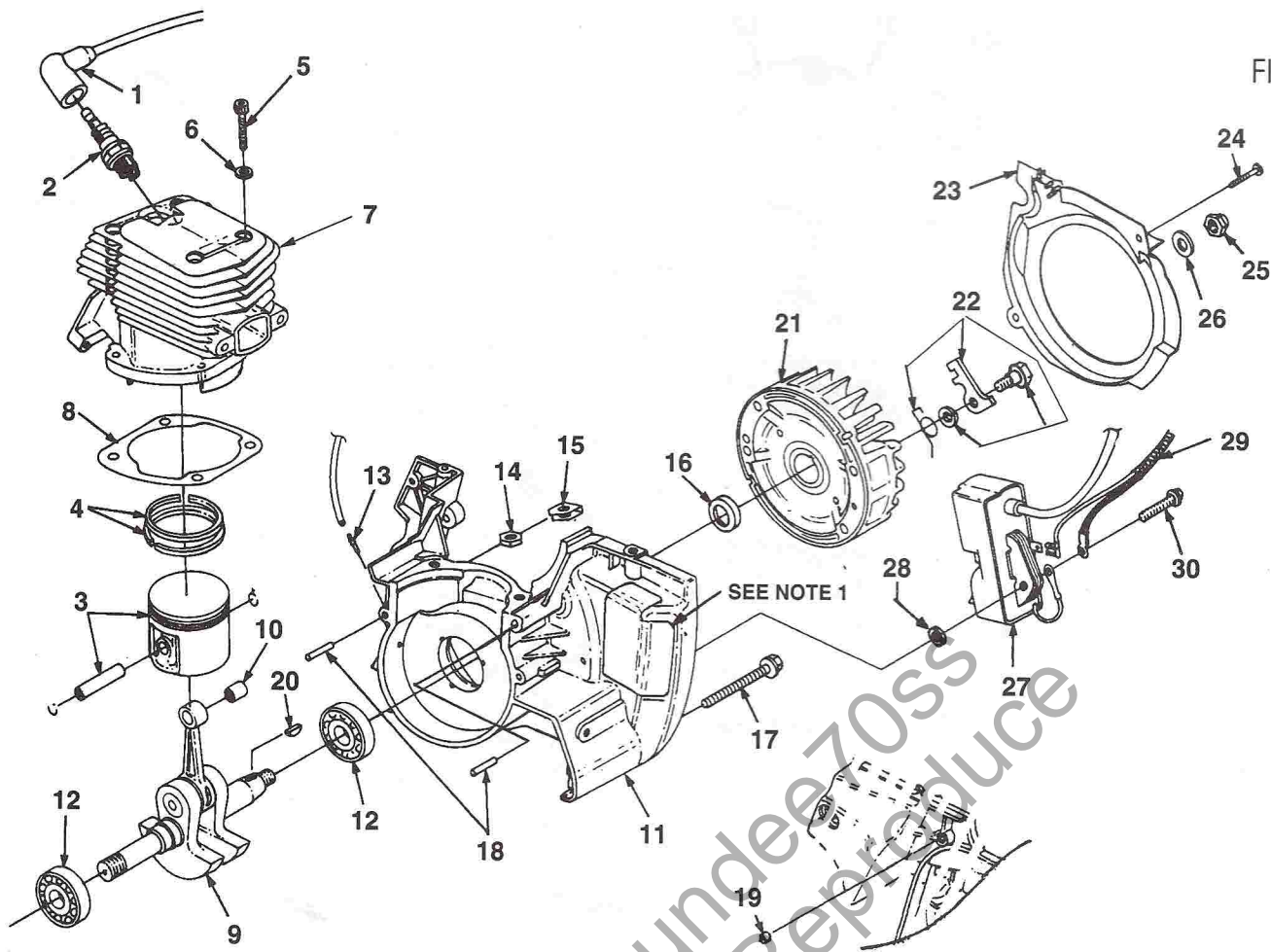


PARTS LIST-FIGURE 3

NO.	PART NO.	DESCRIPTION	QTY
1	A-00022-A	CLUTCH	1
2	A-00351-1	DRUM & HUB	1
3	95058-A	SPROCKET (7T X 3/8P)	1
4	98883	BEARING-Needle	1
5	82283	SCREW-Cap Socket Hd. (10-14 X 3/4")	2
6	84003	WASHER-Flat (#10)	2
7	A-04891	OIL PUMP	1
8	84119	WASHER-Thrust	1
9	58308-B	SEAL-Shaft	1
10	A-00357	WORM & BEARING	1
11	04621	SHIELD-Pump	1
12	80575	SCREW-Slotted Hd. (8-32 X 1/4")	2
13	93367	PIN-Isolator	6
14	93918	BOLT-Guide Bar (3/8-16 X 2")	2
15	81225	NUT-Hex (#12-24)	2
16	01233	BUMPER SPIKE	1
17	82572	SCREW-SocketCap (12-24 X 5/8")	2
18	96620	SCREW-Torx Hd. (10-24 X 1/2")	1
19	04626	CHAIN-Stop	1
20	A-98969-A	BUMPER SPIKE (West Coast)	1

NOTE 1: A-03611-A FOAM KIT

NOTE 2: See FIG. 4, Item #11



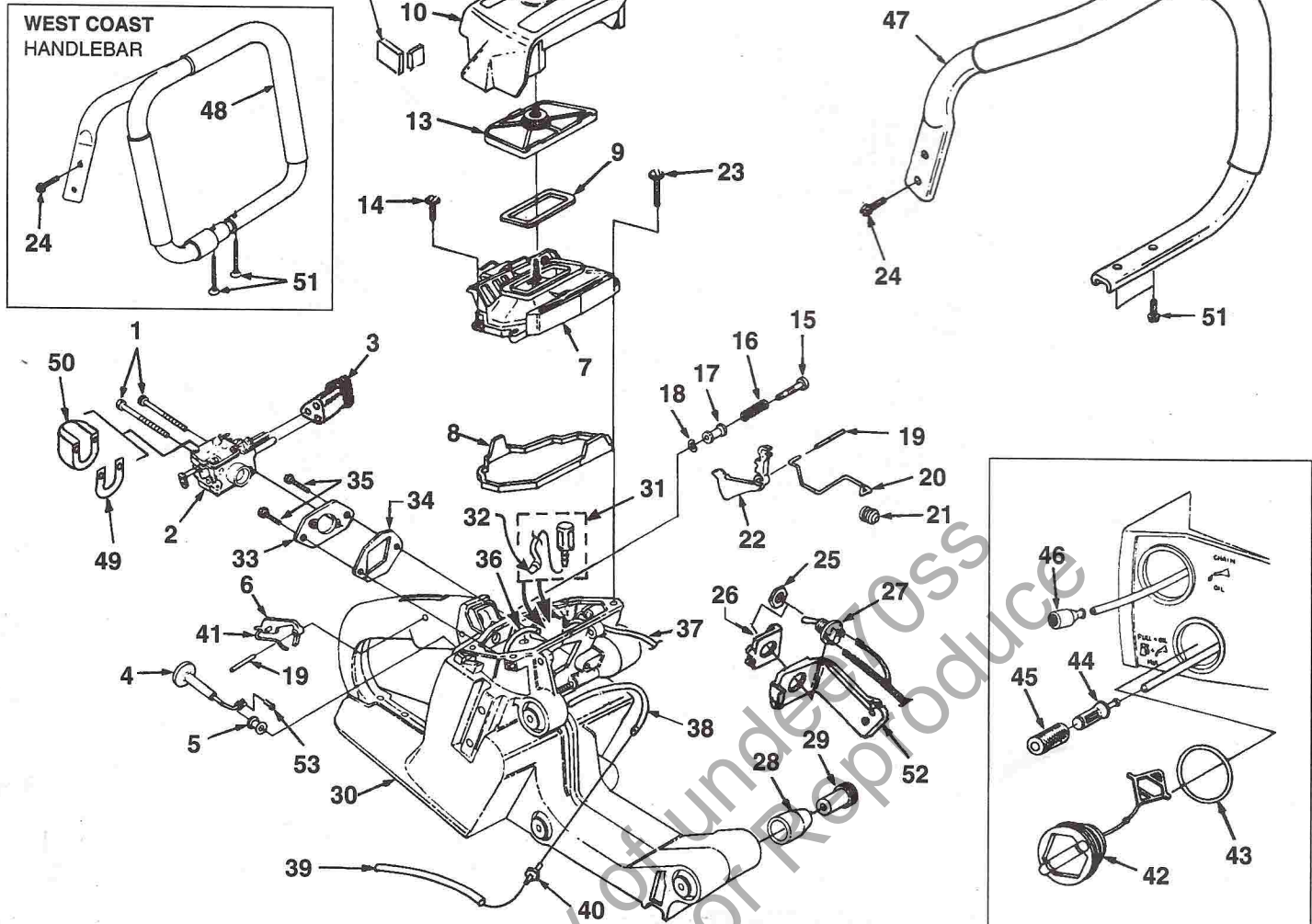
PARTS LIST-FIGURE 4

NO.	PART NO.	DESCRIPTION	QTY.
1	A-33055	TERMINAL-Spark Plug	1
2	98217-S	SPARK PLUG (RCJ6Y)	1
3	•A-02824-2A	PISTON & PIN ASSY.	1
4	02825	PISTON RING	2
5	82246	SCREW-Cap Socket (10-24 X 1")	4
6	12021	WASHER-Conical	4
7	•A-02830	CYLINDER & PISTON (Matched)	1
8	97316	GASKET-Cylinder	1
9	•A-Q0792	CRANKSHAFT & ROD	1
10	93519	BEARING-Needle	1
11	•A-07082	CRANKCASE ASSY.	1
12	94621-A	BEARING-Ball	2
13	69833	FITTING-Tube	1
14	81208	NUT-Lock Hex (10-24)	2
15	12689-A	NUT-Retainer	2
16	58308-B	SEAL-Shaft	1
17	88057	SCREW-Hex Sems (10-24 X 2")	5
18	31062	PIN-Dowel	2
19	97330	BUSHING	1
	93918	BOLT-Guide Bar (See Fig. 3, Item 14)	2
20	75078	KEY-Woodruff	1
21	•A-02085	ROTOR	1
22	A-03610	STARTER PAWL KIT	1
23	02133	SCROLL-Air Guide	1
24	80582	SCREW-Machine Pan Hd. (8-32 X 5/8")	2
25	81255	NUT-Locking Hex (3/8-24)	1
26	95479-A	WASHER-Flat (.687OD), (.387ID)	1
27	•A-04890	MODULE ASSEMBLY	1
28	04617	SPACER-Isolating	2
29	A-98583-1D	LEAD-Ground w/Grommet	1
30	82562	SCREW-Pan Hd.(10-24 X 7/8")	2

NOTE 1: A-03611-A FOAM KIT

8800

FIGURE 5



PARTS LIST-FIGURE 5

NO.	PART NO.	DESCRIPTION	QTY.	NO.	PART NO.	DESCRIPTION	QTY.
1	82527	SCREW-Hex Cap (10-14 X 2")	2	29	97262	SLEEVE-Flanged	6
2	A-97318-A	CARBURETOR (WJ-2A)	1	30	•A-97286	HOUSING-Engine	1
3	97295	GROMMET	2	31	•A-07012	TANK VENT KIT	2
4	97292-1	ROD-Choke	1	32	96841	VALVE-Duck Bill	1
5	64862	GROMMET	1	33	97290-2A	ADAPTOR-Carburetor	1
6	93385-A	TRIGGER-Lock	1	34	97291	GASKET-Carburetor	1
7	•A-97296	COVER-Carburetor Chamber	1	35	96620	SCREW-Torx Truss (10-24 X 1/2")	2
8	97298	GASKET-Carburetor Chamber	1	36	93112-38	TUBING-Rubber (Fuel Line, 9 1/2")	1
9	04635	GASKET-Air Filter	1	37	93157-26	TUBING-Rubber (Pulse Line, 6 1/2")	1
10	A-04636	COVER-Air Filter	1	38	70310-20	TUBING-Rubber (Oil Line, 5")	1
11	00780	DECAL-Warning	1	39	70310-23	TUBING-Rubber (5 3/4")	1
12	96731	DECAL-Warning	1	40	02067	FITTING-Inline Fuel	1
13	A-97303-A	ELEMENT-Filter	1	41	97265	SPRING-Flat	1
14	80577	SCREW-Machine Pan Hd. (8-32 x 3/8")	2	42	•A-03131	CAP-Fuel & Oil	2
15	95671	PIN-Throttle Lock	1	43	98805-A	GASKET-Fuel & Oil Cap	1
16	95020	SPRING-Compression	1	44	•A-97700	FILTER-Fuel	1
17	95989	BUSHING-Flanged	1	45	59253-1A	ELEMENT-Felt Filter	1
18	58409	RING-Retaining	1	46	A-68593	OIL FILTER	1
19	68548	PIN-Trigger	1	47	A-04623	HANDLE BAR	1
20	97294-A	ROD-Throttle	1	48	A-04624	HANDLE BAR (West Coast)	1
21	69889	BOOT-Throttle Rod	1	49	49671	GASKET-Carburetor Shield	1
22	93842	TRIGGER-Throttle	1	50	49673-2	SHIELD-Carburetor	1
23	80582	SCREW-Pan Hd. (8-32 X 5/8")	2	51	88050	SCREW-Hex Sems (10-24 X 5/8")	2
24	88051	SCREW-Hex Sems (10-24 X 3/4")	2	52	97306	COVER	1
25	72084-A1	NUT-Hex	1	53	86324	PIN-Cotter	1
26	12893-A	PLATE-Indicating	1				
27	A-57650-A	SWITCH-Toggle	1				
28	97305-2	ISOLATOR-Vibration	6				

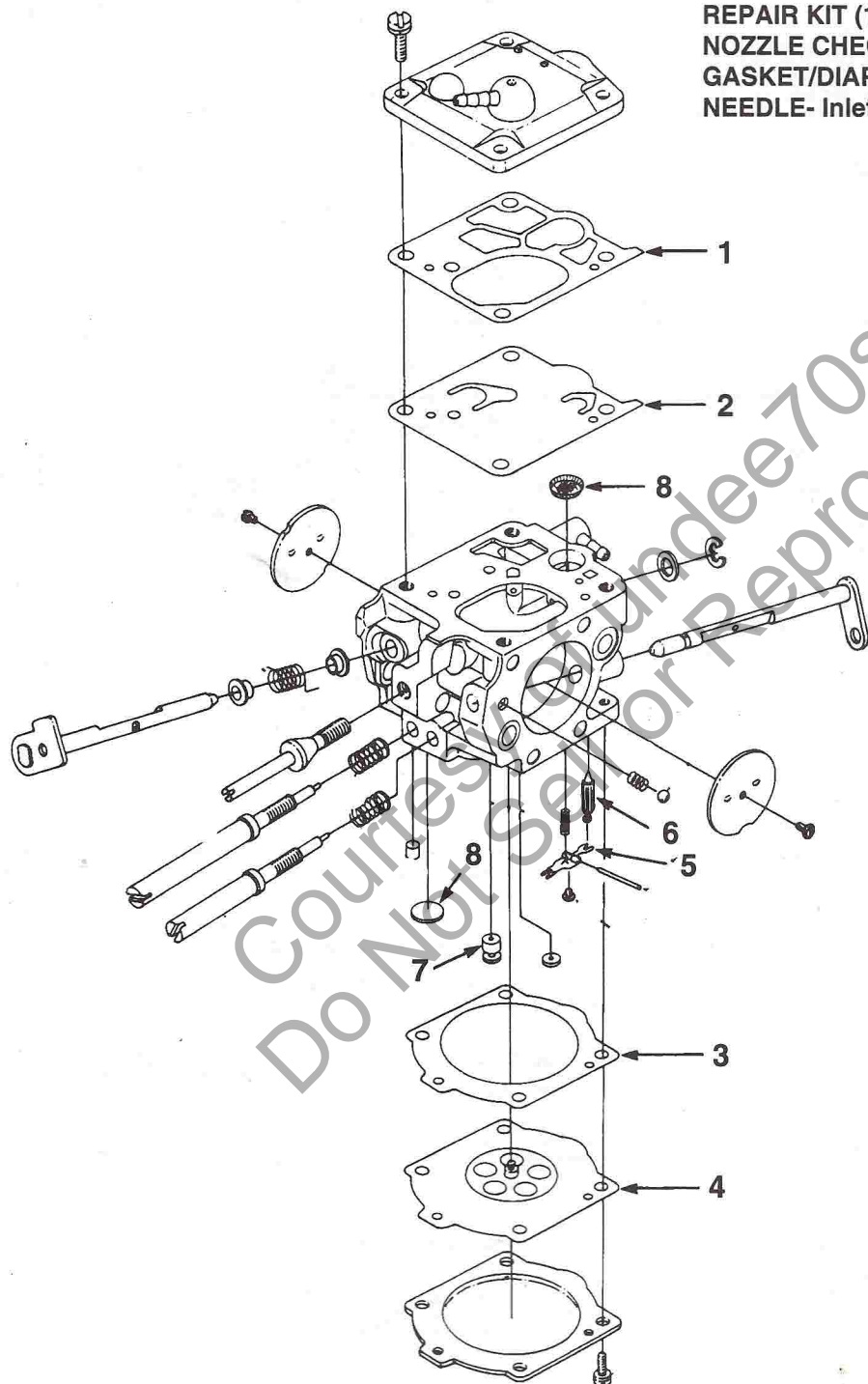
NOTE 1: A-03611-A FOAM KIT

•ASSEMBLIES

CARBURETOR

(WJ-2A) Walbro A-97318-A

REPAIR KIT (1-8)	97935
NOZZLE CHECK VALVE (9)	97943
GASKET/DIAPHRAGM KIT (1-4)	97941
NEEDLE- Inlet (6)	97942



ALWAYS FURNISH MODEL AND SERIAL NUMBER WHEN ORDERING PARTS.

8800 ACCESSORIES

A-22808-A COMBINATION WRENCH
 A-98969-A BUMPER SPIKE
 98888-B 32:1 MIX OIL (1/4 Pint)
 01231-C EXACT MIX OIL
 98664-B BAR & CHAIN OIL (Qrt.)
 98665-A BAR & CHAIN OIL (Gal.)
 D-92680-A GREASE GUN (Sprocket Nose)
 DA-70790-B SAFETY TIP

97231 SCABBARD, GUIDE BAR
 04340 SAFETY GOGGLES
 92815 SAFETY HAT
 92810 EAR PROTECTORS
 A-02977 FUEL CAN (2 1/2 Gal.)
 A-02978 FUEL CAN (5 Gal.)
 24823 SILASTIC, SEALER
 18453 GREASE, MULTI-PURPOSE

GUIDE BARS & CHAIN

POWER TIP

16" PT-16381-G5
 20" PT-20381-G5
 24" PT-24381-G5

CHAIN

J1-L7359-AH (38-LE50-59)
 J1-L7370-AH (38-LE50-70)
 J1-L7381-AH (38-LE50-81)

REPLACEABLE SPROCKET NOSE

16" SP-16381-H5
 20" SP-20381-H5
 24" SP-24381-H5
 28" SP-28383-H5
 31" SP-31383-H5

CHAIN

J1-L7359-AH (38-LE50-59)
 J1-L7370-AH (38-LE50-70)
 J1-L7381-AH (38-LE50-81)
 J3-92092-NB (38-AL63-92)
 J3-92098-NB (38-AL63-98)

GAS WELDED STELLITE TIP

16" GW-16001-G5
 20" GW-20001-G5
 24" GW-24001-G5
 30" GW-30003-G2

CHAIN

J1-L7359-AH (38-LE50-59)
 J1-L7370-AH (38-LE50-70)
 J1-L7381-AH (38-LE50-81)
 J3-92098-NB (38-AL63-92)

HEADQUARTERS

HOMELITE DIVISION OF TEXTRON INC.
 P.O. BOX 7047
 CHARLOTTE, N.C. 28241

CUSTOMER ASSISTANCE

FOR THE LOCATION OF YOUR
 NEAREST HOMELITE SERVICING
 DEALER IN THE UNITED STATES,
 PUERTO RICO, AND THE VIRGIN
 ISLANDS:

CALL: 1-800-242-4672

OVERSEAS OFFICES

NETHERLANDS

HOMELITE TEXTRON
 DIVISION OF TEXTRON ATLANTIC
 (HOOS. - EUROPE, AFRICA and MIDDLE EAST)
 Haverstraat 24
 2153 QB Nieuw Vennepe
 The Netherlands

FRANCE

HOMELITE DIVISION OF TEXTRON
 B.P. 7011
 95050 Cergy-Pontoise Cedex
 France

AUSTRALIA

HOMELITE DIVISION OF TEXTRON
 PACIFIC LIMITED
 HEADQUARTERS
 94 Rushdale Street
 Knoxfield, Victoria 3180
 Australia

CANADIAN OFFICES

HOMELITE

DIVISION OF TEXTRON CANADA LIMITED
 1850 55th Avenue
 Lachine, Quebec, Canada
 H8T 3J5

212-214 590 Ebury Place
 New Westminster, B.C.
 V3M 6K7

595 Canarcic Drive
 Toronto, Ontario
 M3J 2P9

HOMELITE TEXTRON

Homelite Division of Textron Inc.