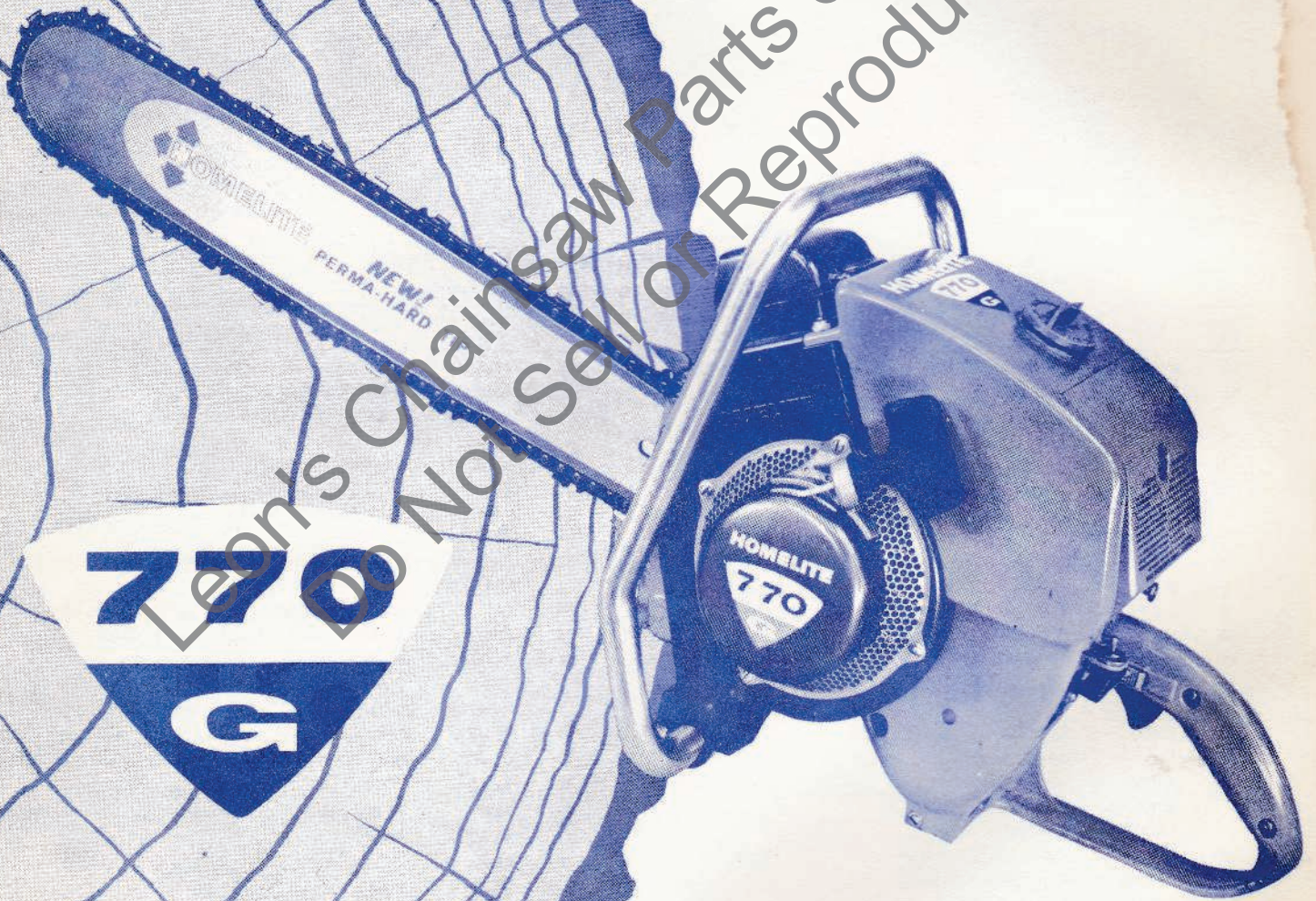


HOMELITE CHAIN SAW



770
G

PARTS LIST

Leon's Chainsaw Parts & Repair
Do Not Sell or Reproduce

HOMELITE CHAIN SAW MODEL 770 G

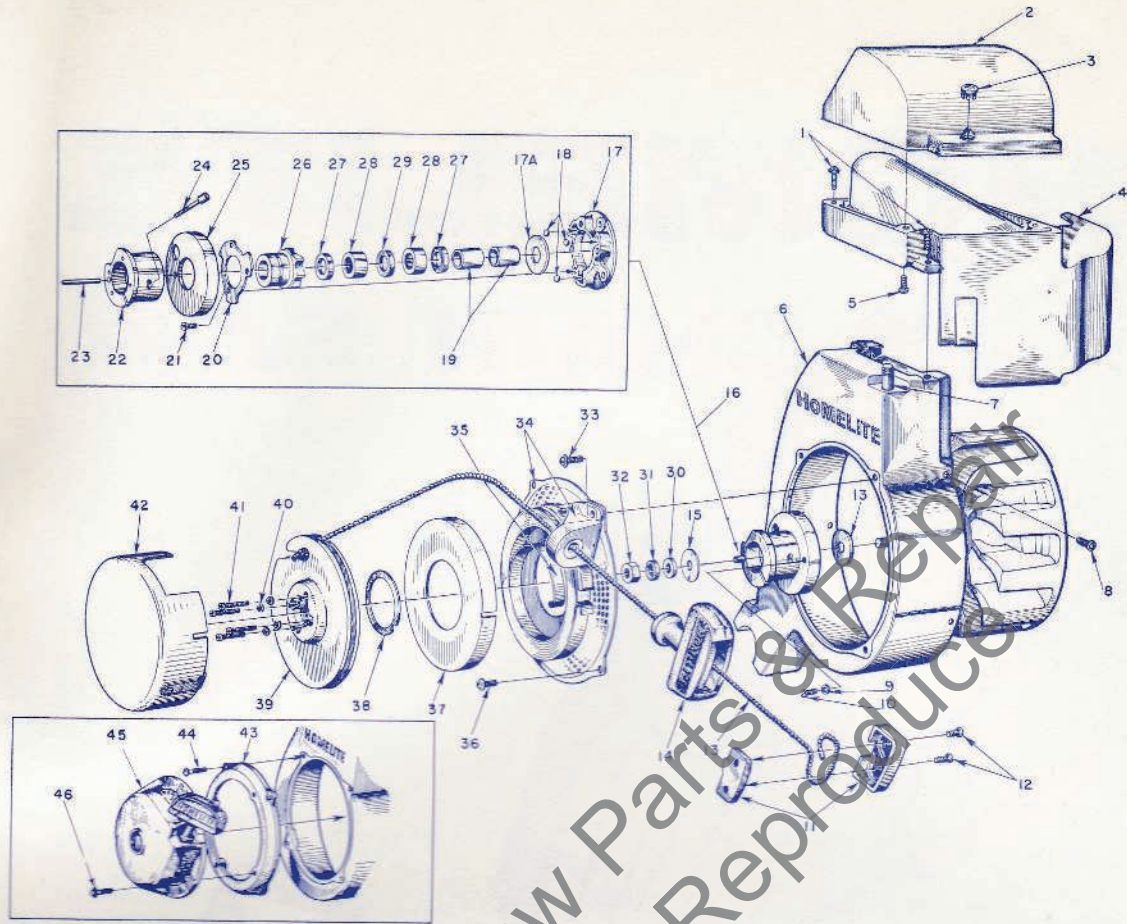


FIGURE 1 — HOMELITE RECOIL STARTER PARTS

FM STARTER ASSEMBLY w/mounting plate and screws

Index No.	Part No.	Description	No. Required	Index No.	Part No.	Description	No. Required
1	80560	SCREW—8-32 x 1/2	2	24	72295-A	SCREW—hub	1
2	56968	CAP—cylinder shield	1	25	56896	CUP—sealing	1
	57029	DECAL—"Homelite"	1		*A-57885	RATCHET & BEARING	
3	32814	PLUG	1			Includes	
4	56967-2	SHIELD—cylinder	1	26	*57797	RATCHET	1
5	80513	SCREW—self-lapping #6 x 1/2	4	27	*71597	SEAL—garlock	2
6	A-57694	FAN HOUSING	1	28	*71596	BEARING—needle	2
		Includes		29	*71595	FELT	1
7	27464	STUD—fuel tank	1	30	84055	WASHER—flat aluminum 7/16	1
8	80577	SCREW—8-32 x 3/4 pan hd.	4	31	83019	WASHER—lock 7/16	1
9	83074	WASHER—lock, 1/4	3	32	81110	NUT—hex 7/16-20	1
10	80173	SCREW—1/4-20 x 5/8	3	33	80576	SCREW—10-32 x 7/16 (through bracket)	1
11	A-56081	INSERT—grip w/cover	1	34	A-55998	SCREEN—air	1
		Includes				Includes	
12	80619	SCREW	2		*A-55999	BRACKET—w/55363-A bushing	1
13	55898	ROPE—nylon	1	35	56497	SPRING—recoil	1
14	55937	GRIP—starting	1	36	80579	SCREW—10-32 x 3/8 pan hd.	6
15	55652	WASHER—thrust	2	37	71603	COVER—spring housing	1
16	A-57883	BALL DRIVE	1	38	71588	SHIM—plastic	as req'd
		Includes		39	55597-2	PULLEY	1
17	57792	PLATE—ball drive	1	40	83004	WASHER—#6 lock	4
17A	73525	WASHER—formica	1	41	80475	SCREW—6-32 x 3/4 fl. hd.	4
18	30355-1	BALL—steel	3	42	AA-73234-1	COVER—pulley	1
19	74221	SLEEVE	2	43	56531	ADAPTER PLATE	1
20	57796	RETAINER—ball	1	44	80576	SCREW—10-32 x 7/16	4
21	80464	SCREW—5-40 x 7/16 flat hd.	3	45	A-56540-6	FM STARTER ASSEMBLY—770G3 only	
22	A-58047	HUB	1			refer to #23649-A Parts list	1
		Includes		46	80681	SCREW—3/4-20 x 1/2	4
23	57065	PIN—spiral	1				

*Assemble to screen with 85073 rivet.

Always furnish saw model and serial number when ordering parts.

HOMELITE CHAIN SAW MODEL 770 G

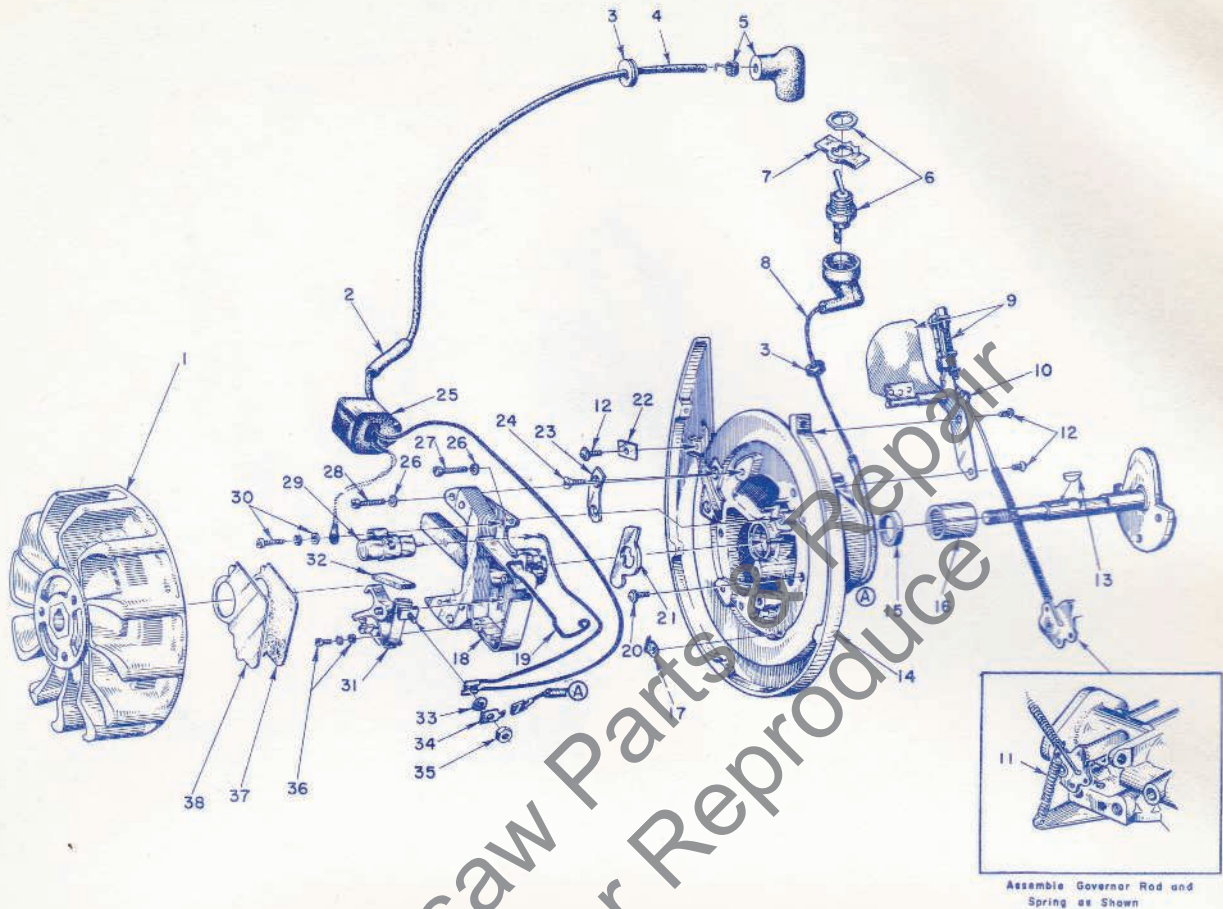


FIGURE 2 — IGNITION AND GOVERNOR PARTS

Index No.	Part No.	Description	No. Required
1	57579-A	ROTOR	1
2	57560	SLEEVE—insulating	1
3	60929	GROMMET	2
4	55235-A	LEAD—high tension	1
5	A-55373	TERMINAL (sparky)	1
6	A-57716	SWITCH (on-off)—mount on adapter Includes	1
7	55879	PLATE on-off	1
8	A-57734	LEAD—ground (with sleeve, terminals, grommet & cover)	1
9	A-58222	GOVERNOR Includes	1
	84066	WASHER—governor arm burr	1
10	55943	ARM—governor	1
11	58035	SPRING	1
12	80575	SCREW—8-32 x 1/4 pan hd.	3
13	75078	KEY—rotor	1
14	A-57697	BACKPLATE Includes	1
15	56134	SEAL—garlock	1
16	57533	BEARING—needle	1
17	57719	CLAMP—ground lead	1

Index No.	Part No.	Description	No. Required
18	57744	BOX—breaker w/core	1
19	55980	CLAMP—dust cover	1
20	80576	SCREW—10-32 x 3/16 pan hd.	6
21	56292-A	WASHER—seating	1
22	55161	CLAMP—outer	1
23	55962	CLAMP—inner	1
24	80598	SCREW—6-32 x 3/16 flat hd.	2
25	55986-A	COIL (with terminals)	1
26	83046	WASHER—#10 lock	3
27	80595	SCREW—10-24 x 1/2 fl. hd.	1
28	80660	SCREW—10-24 x 3/8 fl. hd.	2
29	55987	CONDENSER (with terminal)	1
30	57750	SCREW GROUP—condenser fastening	1
31	A-58165	POINTS (set)—with pivot post Includes	1
	55984	WICK—Felt	1
32	55983	WASHER—terminal	1
33	57733	TAB—ground terminal	1
34	55982	NUT—terminal	1
35	57749	SCREW GROUP—point fastening	1
36	55978-2	GASKET—dust cover	1
37	55979	COVER—dust	1

***SPECIAL TOOLS**

Combination Wrench #22808 supplied with saw

AA-22560	MAGNETO ROTOR REMOVER ASSEMBLY	1	23391-1	ASSEMBLY TOOL—needle bearing	1
A-23131	CLUTCH SPIDER PULLER ASSEMBLY	1	23267	ANYVIL—sprocket shaft assembly	1
23136	BODY—assembling fixture	1	22828	PLIERS—for Tru-arc ring (piston)	1
23232	SLEEVE (for garlock seal)	1	22726	PLIERS—for Tru-arc ring (sprocket)	1
22820-1	ADAPTER—bearing assembling	1	22126	WRENCH—socket screw (conn. rod)	1
A-23137	JACKSCREW ASSEMBLY	1	23234	NEEDLE BEARING TOOL (conn. rod)	1
22812-1	PLATE—shaft aligning	1	23228	PLUG—bearing assembly	1
23233	GARLOCK SEAL ASSEMBLY	1			

*When ordered only.

Always furnish saw model and serial number when ordering parts

HOMELITE CHAIN SAW MODEL 770 G

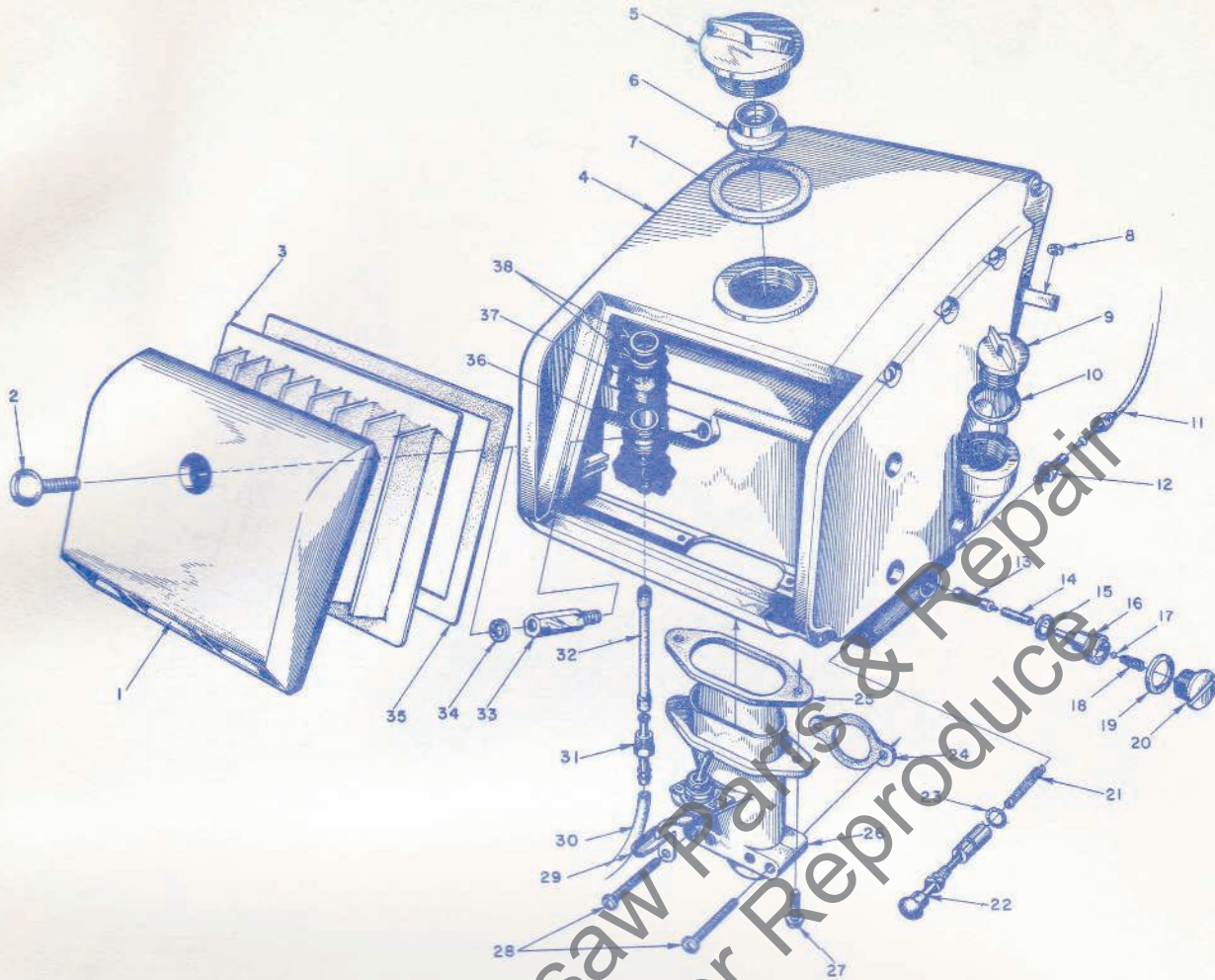


FIGURE 3 — FUEL TANK

Index No.	Part No.	Description	No. Required	Index No.	Part No.	Description	No. Required
1	A-57696-A	COVER—air filter	1	17	25527	BALL—check	1
		Includes		18	55288-A	SPRING—check valve	1
2	57994	SCREW—cap	1	19	55107	GASKET	1
	81163	NUT—screw retaining (not shown)	1	20	AA-55167	CAP—oil supply line	1
	57900	DECAL—HOMELITE Starter	1	21	71762	SPRING—plunger	1
3	58036	ELEMENT—air filter	1	22	A-57834	PLUNGER—oil	1
		Includes				includes	
4	A-57692	FUEL TANK	1	23	74388	'O' Ring	1
	56400	DECAL—Homelite (fuel tank)	1	24	72971-2	GASKET—air elbow	1
5	A-56907	CAP—fuel	1	25	57659	GASKET—adapter	1
		Includes		26	57618	ADAPTER—air filter	1
6	56865	VALVE—relief	1	27	80572	SCREW—10-32 x 5/8 pan hd.	2
7	56335	GASKET	1	28	80841	SCREW—10-32 x 1 1/16 pan hd.	2
8	81108	NUT—flex-lock, 1/4-20	2	29	58169	CLAMP—switch cover	1
9	A-56580	CAP—oil filter	1	30	55680	LINE—fuel	1
		Includes		31	57652	FITTING—fuel outlet	1
10	56607	GASKET	1	32	55805	SLEEVE—flexible	1
11	AA-55191	LINE—oil	1	33	57996	INSERT—adapter	1
12	A-55824	VALVE—check	1	34	57991	GASKET—insert	1
13	AA-55259-A	PICK-UP—oil	1	35	57993	GASKET—cement to tank	1
14	55133-A	SLEEVE—flexible	1	36	A-56200	BODY—fuel strainer w/brass nail	1
		Includes				includes	
15	55110	GASKET	1	37	74374	FILTER—felt	1
16	55109-A	SEAT—check ball	1	38	56196	BUMPER—rubber	1

HOMELITE CHAIN SAW MODEL 770 G

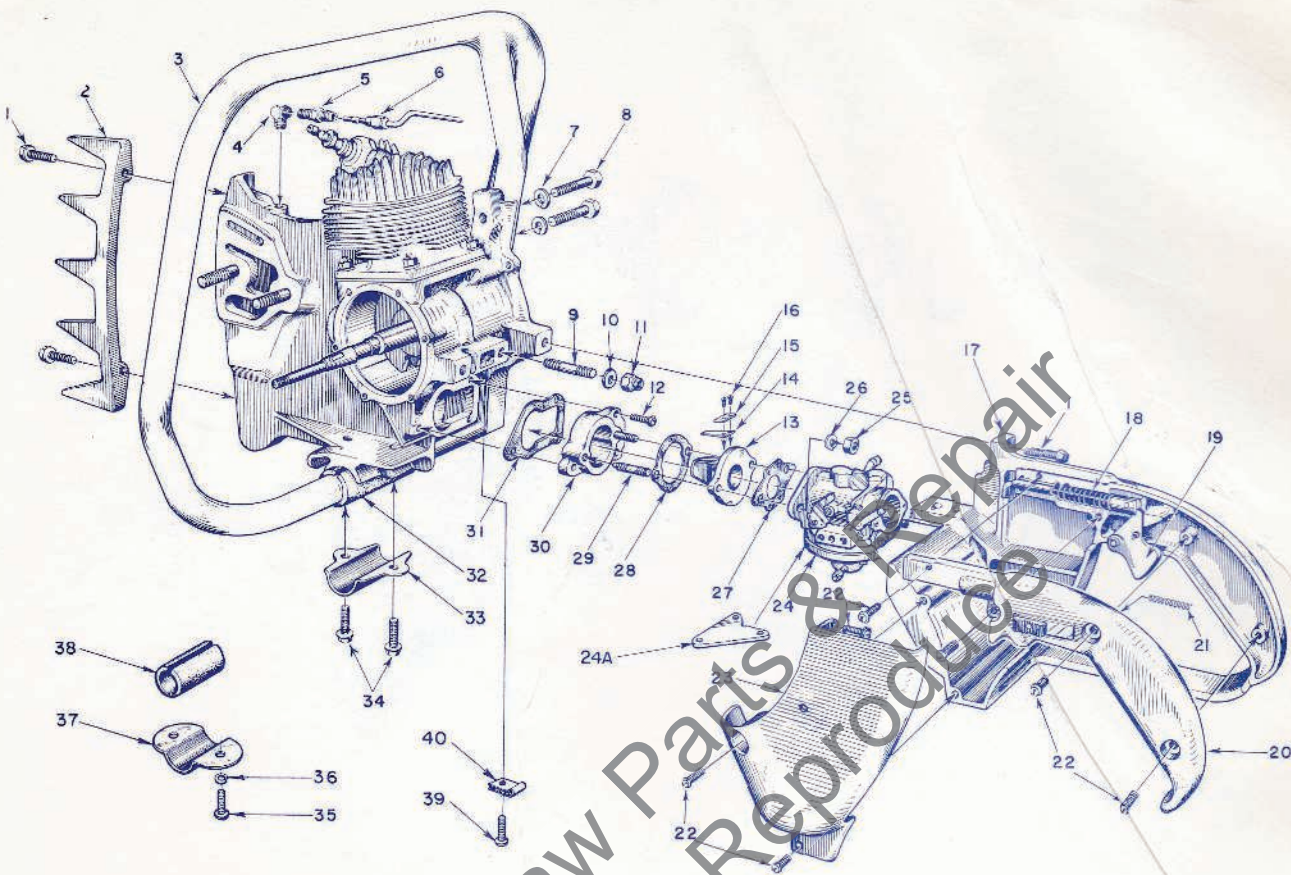


FIGURE 4 — HANDLE, GRIP AND REED VALVE PARTS

Index No.	No. Part	Description	No. Required
1	80573	SCREW— $\frac{1}{4}$ -20 x $1\frac{1}{16}$ hex hd.	5
2	55103	PLATE—bumper	1
3	A-57671	HANDLE—wrap-around (w/80508 screw)	1
	A-57673	HANDLE—flush cut	1
4	31734	ELBOW—connector	1
5	31733-1	ADAPTER—straight	1
6	*	LINE—chain oil (see fig. #3, index #11)	1
7	83003	WASHER— $\frac{1}{16}$ lock	2
8	80087	SCREW— $\frac{7}{16}$ -18 x $1\frac{1}{2}$ hex hd.	2
9	*	STUD—fuel tank (see fig. #6, index #17)	2
10	84095-1	WASHER— $\frac{1}{4}$ flat	2
11	81130	NUT— $\frac{1}{4}$ -28 flex lock	2
12	80583	SCREW—10-32 x $\frac{3}{4}$ pan hd.	3
13	55932	ADAPTER—reed valve	1
14	55941	REED	4
15	55942	PLATE—reed	4
16	80658	SCREW—4-40 x $\frac{3}{16}$ pan hd.	8
17	AA-55281	GRIP—pistol w/pin and 55372 felt	1
18	A-55954	ROD—throttle	1
		Includes	
	55045-A	SPRING	1
19	AA-55207	TRIGGER—Throttle	1
20	AA-55228	COVER—pistol grip	1
		Includes	
	AA-55282	LOCK—throttle	1

Index No.	Part No.	Description	No. Required
		Includes	
		SPRING—lock	1
21	72970		1
22	80560	SCREW—8-32 x $\frac{1}{2}$ pan hd.	7
23	55104-3	SHIELD—carburetor	1
24	A-58102	CARBURETOR ASSEMBLY—Tit. No. HL-117-C	1
24A	57935-A	BRACKET—governor spring	1
	57987	REPAIR KIT—carburetor	1
	57919	GASKET SET—carburetor	1
25	81013	NUT— $\frac{1}{4}$ -20 hex	2
26	83009	WASHER— $\frac{1}{4}$ lock	2
27	55553	GASKET—carburetor	1
28	55946	GASKET—reed adapter	1
29	55945	STUD	2
30	55933	SPACER—reed adapter	1
31	55116	GASKET	1
32	55146	CUSHION—handle	1
33	55145	CLAMP—handle, drive case	1
34	80581	SCREW— $\frac{1}{4}$ -20 x $\frac{5}{8}$ hex hd.	2
35	80289	SCREW—12-24 x $\frac{5}{8}$	2
36	83056	WASHER—lock, #12	2
37	56282-A	CLAMP—handle, fan, housing	1
38	56281	CUSHION—handle	1
39	80629	SCREW—pan hd., 8-32 x $\frac{5}{16}$	1
40	57947	CLAMP—lead	1

Always furnish saw model and serial number when ordering parts.

HOMELITE CHAIN SAW MODEL 770 G

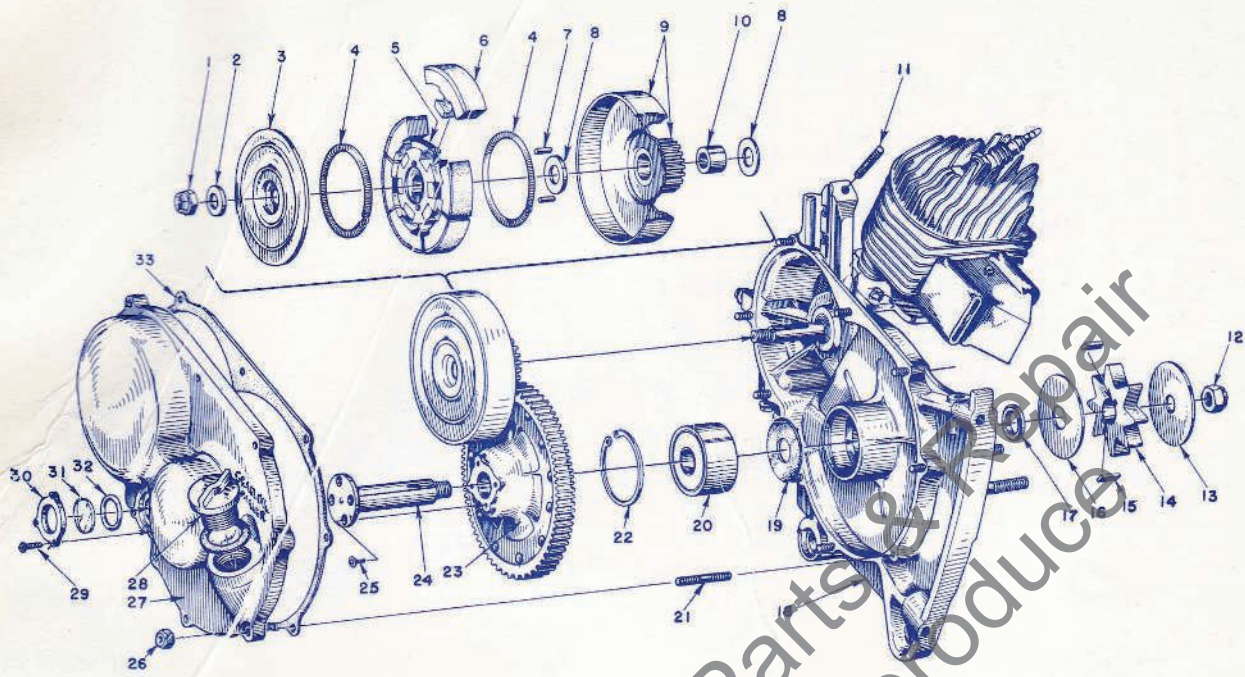


FIGURE 5 — GEAR CASE AND SPROCKET PARTS

2.84:1 Gear Ratio

Index No.	Part No.	Description	No. Required	Index No.	Part No.	Description	No. Required
1	81192	NUT — 3/8-24 flex-lock	1	19	56072	SEAL — formica	1
2	55036	WASHER — clutch	1	20	56219-S	BEARING — ball	1
3	58023	COVER — clutch	1	21	57350	STUD — crankcase to cover	9
4	55123-C	SPRING	2	22	28922	RING — retaining	1
5	58027	SPIDER	1	23	‡A-56516	DRIVEN GEAR — 71 teeth	1
6	A-58028	SHOE	6	24	56070	SHAFT — sprocket	1
7	55225-1A	KEY — clutch	2	25	80651	SCREW — 12-28 x 3/8 flat hd., socket	4
8	56132	WASHER — thrust	2	26	81109	NUT — 10-32, flex-lock	9
9	†A-58259	CLUTCH DRUM (and drive gear) — 25 teeth	1	27	AA-55226-C	COVER — gear case	1
10	56133	BEARING — drive gear	1	Includes			
11	57349	STUD — fuel tank	1	28	A-56580	CAP — oil filler	1
12	81101	NUT — 1/2-20 flex-lock	1	Includes			
13	56077	WASHER — sprocket (outer)	1	56607		GASKET — filler cap	1
14	55593-2	SPROCKET — 8 tooth, 1/2" pitch	1	29	80548	SCREW — binder hd., self tapping	3
15	56076-1A	KEY — sprocket	2	30	55098	PLATE — window	1
16	56074	WASHER — sprocket (inner)	1	31	55099	WINDOW — plastic	1
17	56071	SPACER — sprocket	1	32	55100	GASKET — "O" ring	1
18	*	CRANKCASE	1	33	55053-A	GASKET — gear case cover	1

*A-57743-A — for breakdown see fig. #6, index #11

†For 3.57:1 ratio, order A58260—21 teeth

‡For 3.57:1 ratio, order AA-56824—75 teeth

**For 7 tooth, 3/16" pitch sprocket, order 74481-1

HOMELITE CHAIN SAW MODEL 770 G

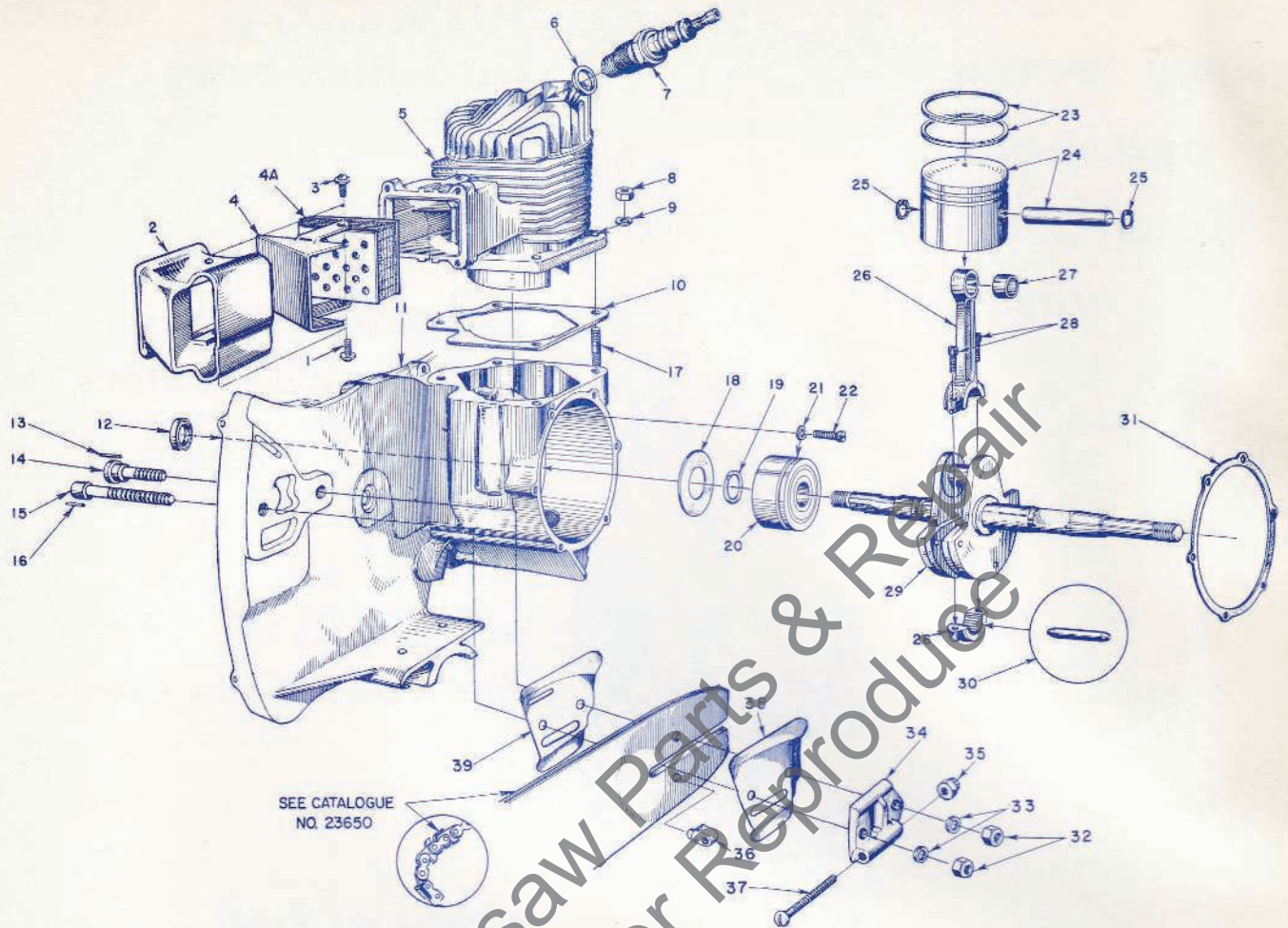


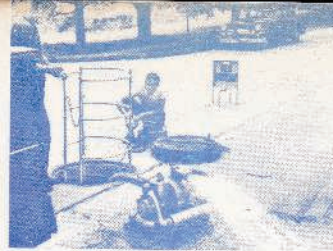
FIGURE 6 ENGINE ASSEMBLY

Index No.	Part No.	Description	No. Required
1	80576	SCREW—10-32 x 1/8 pan hd.	1
2	55506-A	DAMPER	1
3	80583	SCREW—10-32 x 3/4 pan hd.	1
4	56396	CAP—plain	1
4 A	A-56068-A	ELEMENT—wire screen	1
5	57645	CYLINDER	1
	57645-1	CYLINDER—bow guide	1
6	25038	GASKET (included with spark plug)	1
7	71530-5	SPARK PLUG—Champion HO-8A	1
8	81065-2	NUT—1/4-28 hex	4
9	83009	WASHER—1/4 lock	4
10	56864	GASKET—cylinder	1
11	A-57743-A	CRANKCASE	1
		Includes	
12	56134	SEAL—garlock	1
13	58154	PIN—dowel guide bar bolt	1
14	58020	BOLT—guide bar (short)	1
15	57625	BOLT—guide bar (long)	1
16	41738	PIN—spiral, guide bar bolt	1
17	55871	STUD—cylinder, fuel tank	6
	57350	STUD—cover (see fig. #5, index #21)	9
	57349	STUD—fuel tank (see fig. #5, index #11)	1
18	55048-A	GASKET—crankcase sealing	1
19	56109	RING—bearing retaining	1

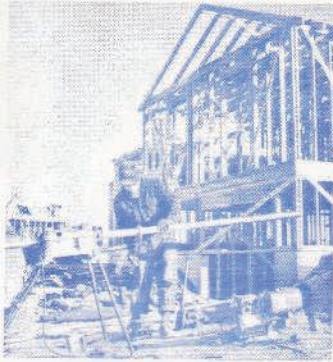
Index No.	Part No.	Description	No. Required
20	56097-S	BEARING—main	1
21	83061	WASHER—lock, special thin	2
22	19238-A	SCREW—main bearing retaining	2
23	56291	RING—piston	2
24	A-57070	PISTON and PIN	1
		Includes	
25	55095	RING—piston pin retaining	2
26	A-57643-B	CONNECTING ROD	1
		Includes	
27	55196	BEARING—piston pin	1
28	58095	SCREW—10-32 x 1/8, allen	2
29	A-57541-B	CRANKSHAFT—Ball Drive STARTER	1
	A-57538-B	CRANKSHAFT—FM STARTER	1
30	AA-72206	ROLLERS (set of 31 needles)	1
31	55049	GASKET—back plate	1
32	81089	NUT—3/8-16 hex	2
33	83018	WASHER—3/8 lock	2
	A-55591	ADJUSTING PLATE	1
		Includes	
34	55551-B	PLATE—adjusting	1
35	81123	NUT—flex-lock	1
36	55552	PIN—guide bar adjusting	1
37	80617	SCREW—3/16-18 x 2 rd. hd.	1
38	56957-A	PLATE—guide bar (outer)	1
39	56956	PLATE—guide bar (inner)	1

A-55900 Heat Damper Kit—Available on order

**You'll
SPEED WORK
and make
MORE MONEY
with...**



HOMELITE
SELF-PRIMING PUMPS



HOMELITE
DEPENDABLE GENERATORS



HOMELITE
POWERFUL ONE-MAN CHAIN SAWS



HOMELITE
ONE-MAN CONCRETE VIBRATORS



HOMELITE — BOSCH (Germany)
ELECTRIC BUILDER'S HAMMERS

All Powered By Famous HOMELITE Engines

Homelite's two-cycle gasoline engines are the most efficient and dependable units of their kind ever built. Their two-cycle design, developed to perfection by Homelite engineers over the past 35 years, gives maximum power for the least weight because power is produced at every piston down stroke. As an added advantage, this design requires fewer moving parts which means greater dependability and lower maintenance

HOMELITE

PORT CHESTER, N. Y.

A **Textron** DIVISION

A TRUSPECTIVE Public
PURNELL COMPANY
Boston, M



Printed in United States of America
Part No. 23643
8M-5-62 (1R-B63)