

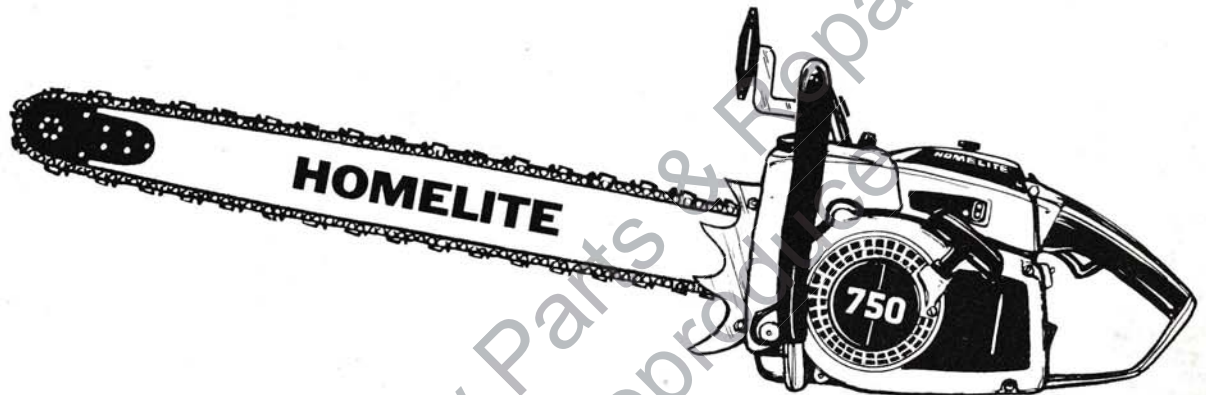
PARTS LIST

PART NO. 17105 - REV.1

Printed in U.S.A.

Price 35¢

750



PROFESSIONAL CHAIN SAW

**AUTOMATIC SAWS
MODELS 750 & 750E**

HOMELITE **TEXTRON**

Homelite Division of Textron Inc.

750 & 750E AUTOMATIC SAWS

TOOLS

DESCRIPTION	PART NO.
Body, Assembling	23136-2A
CD TEST LAMP	A-24994
COLLAR & PLUNGER	A-24876
ANVIL-Ball bearing installation	17081-1
GAUGE- Feeler (.015 thick) pink	22486
PLIERS- Retaining ring	22828
PLUG- Seal installation (crankcase)	24966
PLUG- Seal removal (crankcase)	A-24986
SLEEVE- Seal assembly (crankcase)	23759
SLEEVE- Crankshaft brg.	17082-1
PLUG- Seal removal (backplate)	17027
PLUG- Bearing & seal installation & removal	17025
JACKSCREW- assy.	A-23137
REAMER- Valve seat	A-24884
TOOL & PLUNGER- Piston pin	A-24871
WRENCH- Combination	A-24284
WRENCH- Combination	A-23937-B
WRENCH- Socket (750 only)	68651
KEY- Hex	94624
ANVIL	17091
ANVIL- Ball brg.	17088-1
ROTOR- Puller	A-17106-B
Includes:	
SCREW- Hex hd.	80627
STUD	17108
RING	93972
WRENCH- Spanner	A-93791
Includes:	
PIN	23717-A

ACCESSORIES

DESCRIPTION	PART NO.
KIT- Fine filtration	A-96112
ROPE- Starting #5, 250' reel	57084-1
TUBING- Rubber (10 ft.)	93112-99
TUBING- Rubber (10 ft.)	93157-99
COMPOUND DC4 (8 oz. tube)	22636-B
SAFE•T•TIP (STD)	A-70790-A
Includes:	
SCREW- #1/4-20 x 5/8	82335

PAINT

DESCRIPTION	PART NO.
SPRAY CAN- Black	22772
SPRAY CAN- Red	23475

750 ONLY

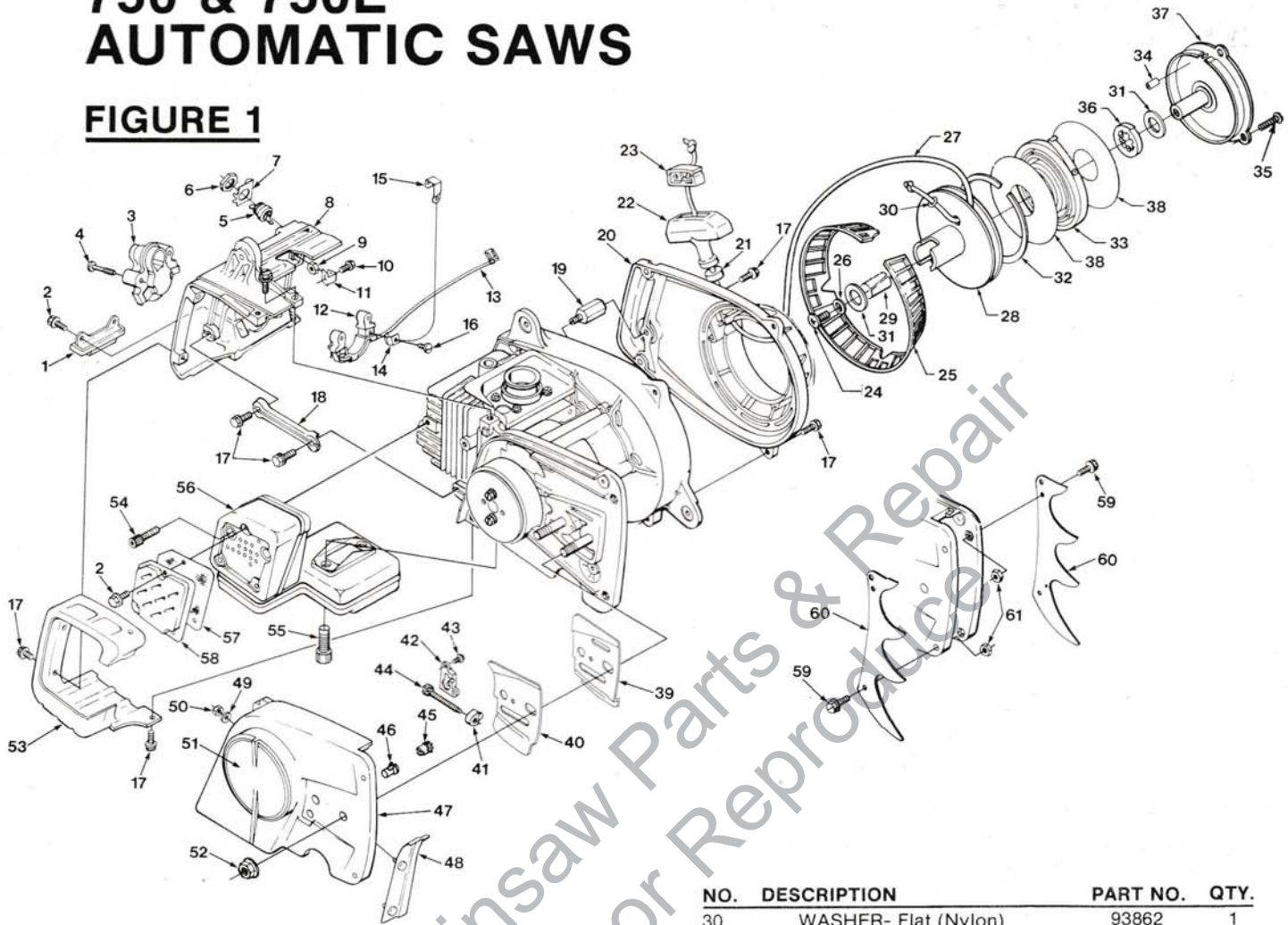
DESCRIPTION	PART NO.	QTY.
KIT- Chain Brake	A-93012-C	1
Includes:		
PIN- Dowel	59751	1
COVER- Gear	12134	1
SCREW- Guide Bar adjusting	A-12746	1
SLEEVE- Headed	70313	1
BUSHING	70693	1
ADJUSTER- Guide bar	A-70694	1
DECAL	70717	1
SPRING- Chain brake	70873	1
COVER- Drivecase	70876-2	1
BAND- Brake	70879	1
LEVER- Lock	70884	1
STUD- Spring mounting	70900	1
BEARING- Roller	94915	1
LEVER- Brake	A-70902-B	1
RING- Retaining	70925	1
SCREW-	80912	1
SCREW	82251	1
PIN- Guide bar adjust.	93039	1
SPRING- Torsion	93086	1
SLEEVE	93260	1
WASHER	93282	3
LEVER- Sleeve	93296	1
SCREW- Shoulder	93773	1
HANDLE BAR	A-93008	1
DRUM & HUB	A-70868-1	1

750E ONLY

DESCRIPTION	PART NO.	QTY.
KIT- Chain brake	A-93011-B	1
Includes:		
PIN- Dowel	59751	1
HUB & DRUM	A-70868-1	1
COVER- Gear	12134	1
SCREW- Guide bar adjusting	A-12746	1
SLEEVE- Headed	70313	1
BUSHING	70639	1
SCREW- Gear & adjusting	A-70694	1
DECAL	70717	1
BRAKE- Spring chain	70873	1
COVER- Drivecase	70876-2	1
BAND- Brake	70879	1
LOCKING-Lever	70884	1
STUD- Spring mounting	70900	1
LEVER- Brake	A-70902-B	1
RING- Retaining	70925	1
BEARING- Roller	94915	1
SCREW- 1/4-20 x 1-1/4	80912	1
SCREW- Mach pan hd.	82251	2
SCREW	82322	1
PIN- Guide bar adjusting	93039	1
SPRING- Torsion	93086	1
SLEEVE	93260	1
WASHER- Flat	93282	3
SLEEVE- Lever	93296	1
SCREW- Shoulder	93773	1

750 & 750E AUTOMATIC SAWS

FIGURE 1



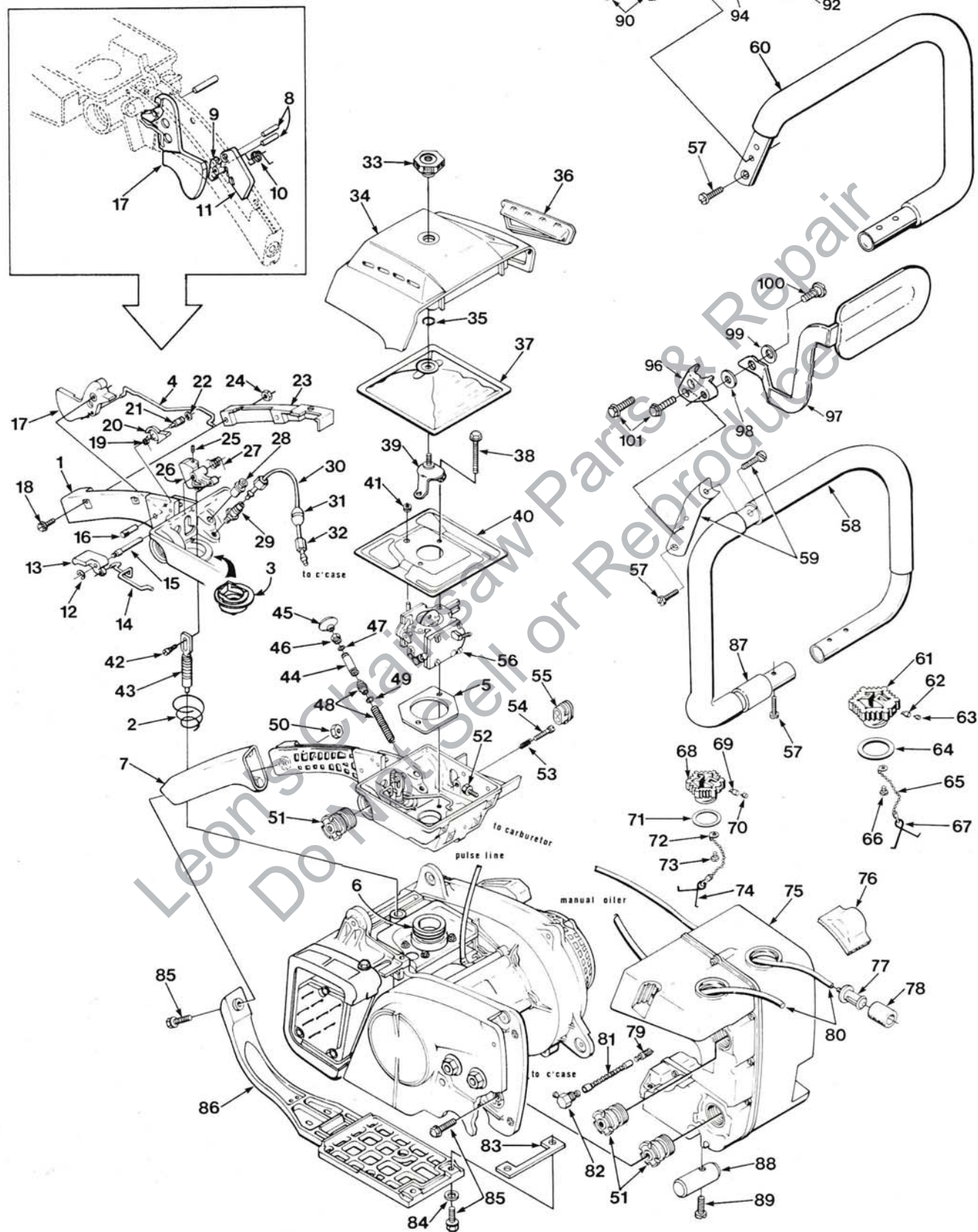
NO.	DESCRIPTION	PART NO.	QTY.
1	SNUBBER- Rear	A-12803-A	1
2	SCREW- Hex Sems 8-32 x 3/8	88041	5
3	TRANSFORMER	A-12299-A	1
4	Includes: SCREW	95270	2
	GROMMET (Shown in Fig.3)	12191	1
5	SWITCH- Grounding	A-57650-A	1
6	Includes: NUT- Hex	72084-A1	1
7	PLATE- Indicating (Run-Stop)	12793-A	1
8	SHIELD- Cylinder	12606-2B	1
9	NUT- Hex, 10-24	81208	2
10	SCREW- Hex sems 10-24 x 3/4	88051	3
11	RETAINER- Nut	12672	2
12	RECEPTACLE- Transformer	A-70088	1
13	LEAD- Module	A-12719-A	1
14	CONTACT- Transformer	12788	2
15	CONTACT- Ground	70720	1
16	SCREW- Pan hd. plastite #6 x 3/8	82215	2
17	SCREW- Hex sems, 10-24 x 5/8	88050	11
18	BRACE- Cylinder shield	12773	1
19	SPACER- w/stud	A-93055	1
20	HOUSING- Rewind starter	A-12812	1
21	Includes: BUSHING- Starter rope	67177	1
22	GRIP- Starter rope	A-69962-B	1
23	Includes: INSERT- Rope retaining	70018-A	1
24	SCREW- Pan hd. 10-24 x 1/2	96620	1
25	SCREEN- Starter housing	12625-A	1
26	WASHER- Retaining	12789	1
27	ROPE- Starter (48" long) #5	A-93875	1
28	PULLEY- Starter	A-70198-A	1
29	Includes: BUSHING- Starter post	94321	2

NO.	DESCRIPTION	PART NO.	QTY.
30	WASHER- Flat (Nylon)	93862	1
31	WASHER	94320	2
32	RING- Retaining	12637	1
33	SPRING- Rewind	A-94885	1
34	Includes: SLEEVE- Pin	94884	1
35	SCREW- Pan hd. 8-32 x 1/2	82254	3
36	LOCK- Rewind spring	12957	1
37	COVER- Starter	A-93917	1
38	Includes: SHIELD- Rewind spring (Inner)	93276	2
39	PLATE- Guide bar (Inner)	70399	1
40	PLATE- Guide bar (Outer)	70400	1
41	PIN- Guide bar adjustment	93039	1
42	COVER- Gear	12134	1
43	SCREW- Pan hd. 6-32 x 3/8	82251	2
44	SCREW- Guide bar adjustment	A-12746	1
45	ADJUSTOR- Guide bar	A-70694	1
46	BUSHING	70693	1
47	COVER- Drivecase	A-93749	1
48	Includes: GUARD- Chain	A-70159	1
49	Includes: WASHER- Belleville	12940	2
50	NUT- Hex 8-32	81009	2
51	DECAL	70241	2
52	NUT- Hex flange 3/8-16	12860	2
53	SHIELD- Muffler	12969-3	1
54	SCREW- Soc. hd. cap 10-24 x 3/4	82283	2
55	SCREW- Soc. hd. cap 1/4 x 3/4	82316	2
56	MUFFLER	A-12739-1B	1
57	ARRESTOR- Spark	A-93899-A	1
58	CAP- Muffler exhaust	12824-1	1
59	SCREW- Hex sems 10-24 x 1/2	88049	4
60	PLATE- Bumper (Long spike)	94632	1
61	NUT- Hex 10-24	81208	4

ALWAYS FURNISH MODEL AND SERIAL NUMBER WHEN ORDERING PARTS.

750 & 750E AUTOMATIC SAWS

FIGURE 2



750 & 750E AUTOMATIC SAWS

FIGURE 2

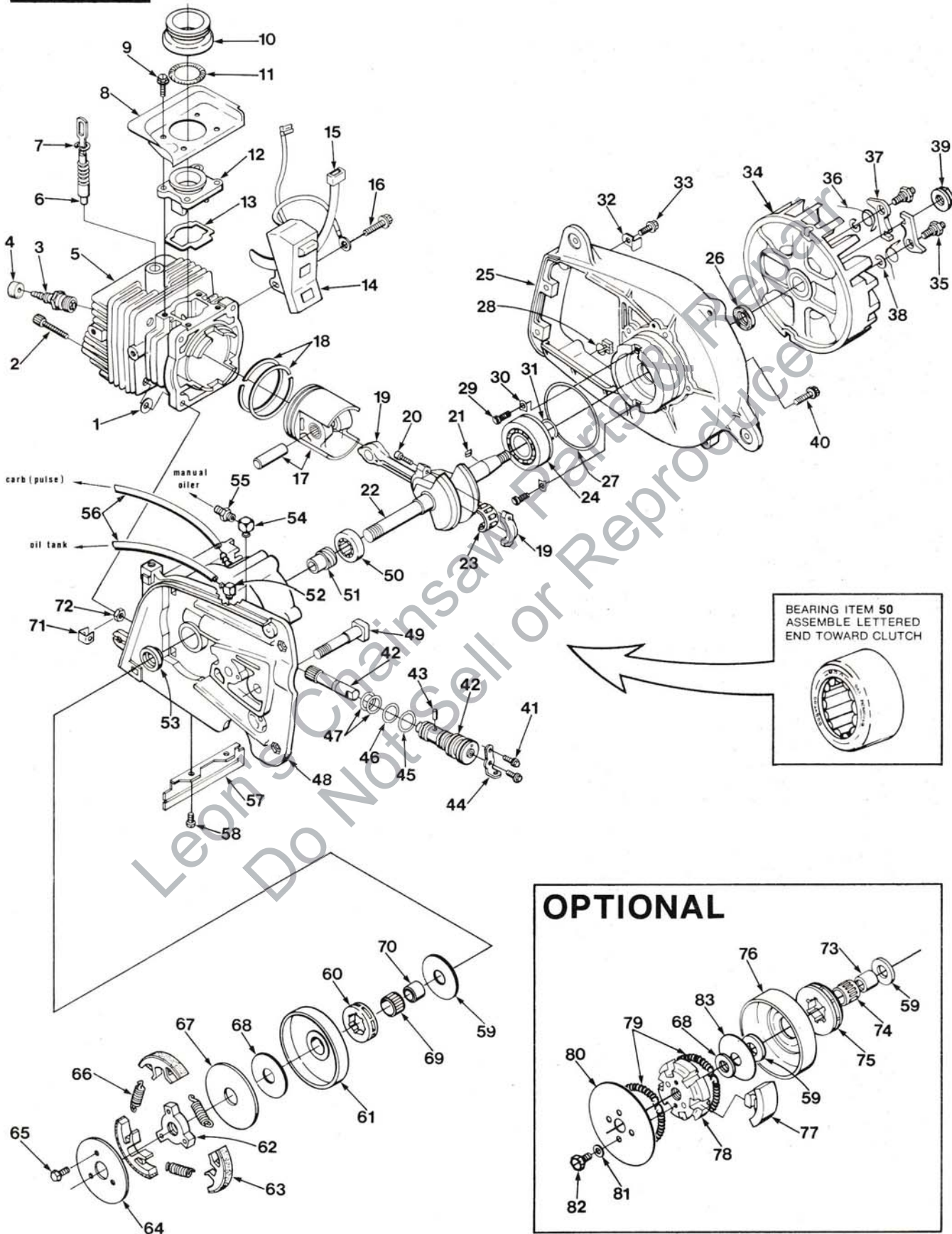
NO.	DESCRIPTION	PART NO.	QTY.	NO.	DESCRIPTION	PART NO.	QTY.
1	HANDLE- Throttle Includes:	A-12813-1	1	58	HANDLEBAR- Wrap around (750) Includes:	A-12714-A	1
2	SPRING- Conical	12867	1	59	BRACE- Handle	12765-A	1
3	BOOT- Sealing	12799-A	1		SCREW- Soc hd. cap 10-24 x 7/8 (See #57)	82262	1
4	ROD- Throttle	12642-B	1	60	HANDLEBAR- Flush cut (750E)	A-12898-A	1
5	SPACER- Heat insulating	12991	1	61	CAP- Fuel filler Includes:	A-69500-A	1
6	CONNECTOR- Carburetor	12623-B	1	62	VALVE- Check (Oval duckbill)	69451	1
7	GRIP- Throttle handle (Note 1)	70019-2	1	63	FILTER- Filler cap	69454	1
8	PIN- Groove	64939	2	64	GASKET- Fuel cap	69501	1
9	LEVER- Trigger lock	93132	1	65	CHAIN- Bead	69502	1
10	SPRING- Torsion	93623	1	66	SCREW- Pan hd. plastite #6 x 1/4	82256	1
11	TRIGGER- Lock (750E)	93131	1	67	RETAINER	69503	1
12	RING- Retaining	69071	1	68	CAP- Oil filler Includes:	A-12222	1
13	LEVER- Choke	12620	1	69	VALVE- Check (Oval duckbill)	69451	1
14	ROD- Choke	12643	1	70	FILTER- Filler cap	69454	1
15	PIN- Pivot (Compression arm)	12682	1	71	GASKET- Oil cap	12126	1
16	PIN- Trigger	12983	1	72	CHAIN- Bead	69502	1
17	TRIGGER- Throttle (Note 1)	12618	1	73	SCREW- Pan hd. plastite #6 x 1/4	82256	1
18	SCREW- Pan hd. 8-32 x 3/8	82253	2	74	RETAINER	69503	1
19	SPRING- Torsion (Compression arm)	12681	1	75	TANK- Fuel and oil Includes:	A-70567-A	1
20	CAM- Compression release	12621	1	76	BUMPER- Fuel tank	12863	1
21	PIN- Pivot (Compression cam)	12680	1	77	PICK UP- Fuel Includes:	A-59251	1
22	RING- Retaining	12683	1	78	FILTER- Felt	59253-1	1
23	COVER- Throttle handle	12616-2A	1	79	FINDER- Oil	A-64293	2
24	NUT- Hex 8-32	81223	2	80	TUBING- Fuel & oil	93112-48	2
25	SCREW- Set 10-32 x 3/8	12864	1	81	LINE- Oil, flexible	63605	1
26	ARM- Compression release valve	12644-1	1	82	ELBOW- 90°, oil line	12661	1
27	SPRING- Torsion (Compression arm)	12656	1	83	SPACER- Heat insulating	12979	1
28	VALVE- Check (Inlet)	A-12987	1	84	WASHER	12984	2
29	VALVE- Check (Outlet)	A-65077	1	85	SCREW- Hex sems 10-24 x 3/4	88051	7
30	LINE- Manual oil discharge Includes:	A-70079	1	86	BRACE- Throttle handle	12610-2C	1
31	SLEEVE- 1/8 Compression	25301	2	87	BUSHING- Handlebar	69187	1
32	NUT- Compression (5/16-24)	25302	1	88	STOP- Chain (750E)	93696	1
33	NUT- Filter cover mounting	A-65272	1	89	SCREW- Hex sems (750E) 10-24 x 7/8	88052	1
34	COVER- Air filter	A-93016-2A	1		KIT- Hand guard (750E) Includes:	A-93967	1
35	RING- Retaining	58319-A	1	90	SCREW- Sems hex hd. (750E) 10-24 x 7/8	88052	2
36	INTAKE- Air (Air filter cover)	12893	1	91	BRACKET- Hand guard (750E)	12238-3	1
37	FILTER ELEMENT- Air	A-12742-A	1	92	GUARD- Hand (750E) Includes:	A-93968	1
38	SCREW- Hex sems 10-24 x 2	88057	2	93	WASHER (750E)	70788	1
39	BRACKET- Air filter cover	A-93001-A	1	94	WASHER- Flat (750E)	94867	1
40	SHIELD- Carburetor chamber Includes:	A-93294	1	95	SCREW- Shoulder (750E)	93914	1
41	GROMMET	53312-1	1	96	BRACKET- Hand guard (750)	12238-3	1
42	SCREW- Shoulder	12861	1	97	GUARD- Hand (750) (Note 2) Includes:	A-96177	1
43	VALVE- Compression release	A-12712	1	98	WASHER (750)	94867	1
44	PLUNGER- Oil pump (Manual) Includes:	A-94094	1	99	WASHER (750)	70788	1
45	BUTTON	65084	1	100	SCREW- Shoulder (750)	93914	1
46	NUT	65082	1	101	SCREW- Sems hex hd. 10-24 x 7/8	88052	2
47	"O" RING	59074	1				
48	PLUNGER- Pump Includes:	A-67235-A	1				
49	"O" RING	58406	1				
50	NUT- Hex 10-24	81208	1				
51	ISOLATOR- Vibration	A-12708-B	5				
52	SCREW- Hex sems 10-24 x 5/8	88050	4				
53	SPRING- Idle adjustment	12784	1				
54	SCREW- Idle adjustment	12783	1				
55	GROMMET- Carburetor needle	12891	1				
56	CARBURETOR (WB-9)	A-94108	1				
57	SCREW- Soc hd. cap 10-24 x 7/8	82262	3				

NOTE 1: Units without trigger lock items #8, 9, 10 and 11 must use 70019-A grip.

NOTE 2: Must be used with A-12714-A handle bar.

750 & 750E AUTOMATIC SAWS

FIGURE 3



750 & 750E AUTOMATIC SAWS

FIGURE 3

NO.	DESCRIPTION	PART NO.	QTY.	NO.	DESCRIPTION	PART NO.	QTY.
1	WASHER- Conical	12631	4	47	"O" RING	12853	2
2	SCREW- Socket hd. 10-24 x 1	88053	4	48	CRANKCASE (See Note 1)	A-93957	1
3	SPARK PLUG (CJ-3)	70210-S	1		Includes:		
	SPARK PLUG (UCJ-4G) accessory	68713-S	1	49	STUD- Guide bar (See Note 2)	93918	2
4	GROMMET- Spark plug	12191	1	50	BEARING- Roller	70409-A	1
5	CYLINDER	A-70489-A	1	51	GEAR- Worm	12071	1
	Includes:			52	FITTING	94619	1
6	VALVE- Compression	A-12712	1	53	SEAL	12306	1
7	RING- Retaining	75120	1	54	CONNECTOR- Elbow 90°	31734	1
8	DEFLECTOR- Air	12794	1	55	FITTING- Straight	31733-1	1
9	SCREW- Hex sems 8-32 x 5/8	88043	4	56	LINE- Flexible	93157-16	2
10	CONNECTOR- Carburetor	12623-B	1	57	SHIELD- Heat	12777	1
11	SPRING- Garter	12858	1	58	SCREW- Pan hd. 8-32 x 3/8	82253	2
12	MANIFOLD- Intake	12622-B	1		KIT- Clutch	A-94157	1
13	GASKET- Intake manifold	12648-A	1		Includes:		
14	MODULE & CORE	12669-A	1	59	WASHER- Thrust	12668	1
15	TIE- Cable (Module leads)	12298	1	60	SPROCKET- Rim 7T (7 Spline) .404 pitch	63285	1
16	SCREW- Hex sems 8-32 x 1 1/4	88045	1	61	DRUM & HUB (7 Spline)	A-93865-A	1
17	PISTON & PIN	A-70572-A	1	62	SPIDER- Clutch	93811	1
	Includes:			63	SHOE- Clutch	A-93815	3
18	PISTON RING	69193-A	2	64	COVER- Clutch	93628	1
19	ROD- Connecting	A-70274	1	65	SCREW- Hex sems 8-32 x 3.75	88041	3
	Includes:			66	SPRING- Clutch	93814-A	3
20	SCREW- Soc hd. 10-32 x 5/8	80345	2	67	WASHER- Thrust	93650	1
21	KEY- Woodruff	75078	1	68	WASHER- Thrust	12667	1
22	CRANKSHAFT	70236-2	1	69	BEARING- Washer	64124	1
23	BEARING- Cage (14 Roller)	A-70610	1	70	RACE- Inner	12882	1
24	BEARING- Ball	70844	1	71	RETAINER- Nut	12689	4
25	PLATE- Back	A-70896	1	72	NUT- Hex 10-24	81208	4
	Includes:			73	RACE- Inner (Opt.)	12666	1
26	SEAL	53444	1	74	BEARING- Needle (Opt.)	65393	1
27	"O" RING	67559	1	75	SPROCKET- Rim 7 T. .404 (7 Spline)	63285	1
28	RETAINER- Lead	12859	1		SPROCKET- Rim 8 T. .404 (6 Spline) (Opt.)	65960	1
29	SCREW- Torx	70851	2	76	DRUM & HUB (7 Spline) (Opt.)	A-68727-A	1
30	WASHER- Lock	63905	2		DRUM & HUB (6 Spline) (Opt.)	A-65991	1
31	RING- Retaining	70843	1		CLUTCH (Opt.)	A-93287-A	1
32	CLIP- Wire (Switch lead retainer)	12896	1		Includes:		
33	SCREW- Hex sems 10-24 x 3/4	88051	1	77	SHOE- Clutch	93281-1A	6
34	ROTOR & STUD	A-93133	1	78	SPIDER- Clutch	93288-1	1
	Includes:			79	SPRING- Clutch	93289	2
35	STUD- Starter pawl	93079	2	80	COVER- Clutch (Opt.)	A-24921-A	1
36	SPRING- Starter pawl	65375	2		Includes:		
37	PAWL- Starter	58756	2	81	WASHER- Belleville	12021	2
38	WASHER- Lock	70901	2	82	SCREW- Hex 10-32 x 1/2 (Opt.)	80361-2	2
39	NUT- Hex flange	81236	1	83	WASHER- Thrust (Opt.)	12907	1
40	SCREW- Hex sems 10-24 x 5/8	88051	5		SPROCKET & DRUM- Spur (Opt.) (8 T. 3/8 Pitch)	A-12819	1
41	SCREW- Hex sems 8-32 x 3/8	88041	2				
42	PUMP- Automatic oil	A-12723	1				
	Includes:						
43	PIN- Cam guide	12108	1				
44	BRACKET- Oil pump retainer	12076	1				
45	"O" RING	12854	1				
46	"O" RING	12095	1				

NOTE 1: Prior to Lot #8074 use crankcase A-70470.

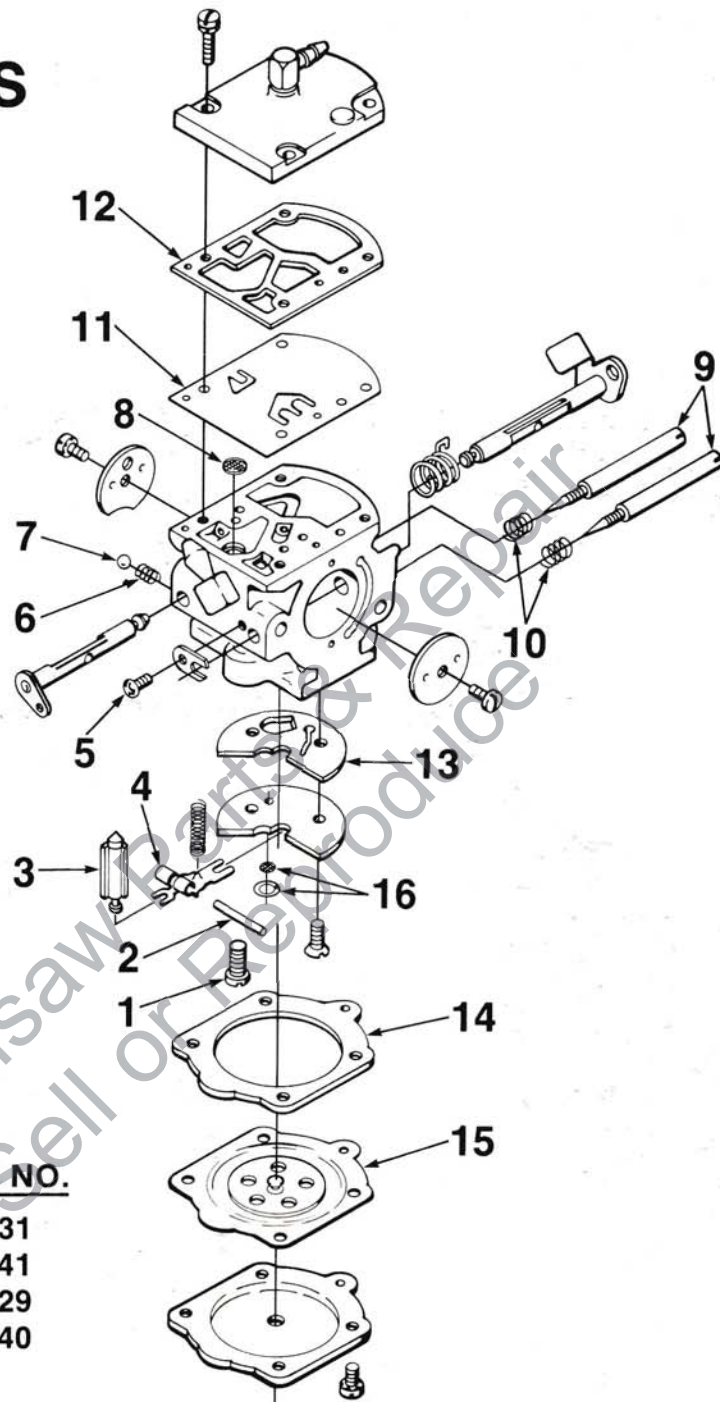
NOTE 2: Prior to Lot #8074 use stud 58334-A.

750 & 750E AUTOMATIC SAWS

CARBURETOR

A-94108

WB-9



11821VZ



DESCRIPTION

PART NO.

REPAIR KIT (1-15)	94131
KIT- Gasket/diaphragm (11-15)	95241
VALVE- Inlet needle (3)	64229
KIT- Valve repair (16)	95240

HOMELITE DIVISION OF TEXTRON INC.

P.O. BOX 7047
14401 CAROWINDS BOULEVARD
CHARLOTTE, N.C. 28217

HOMELITE TEXTRON

Homelite Division of Textron Inc.