

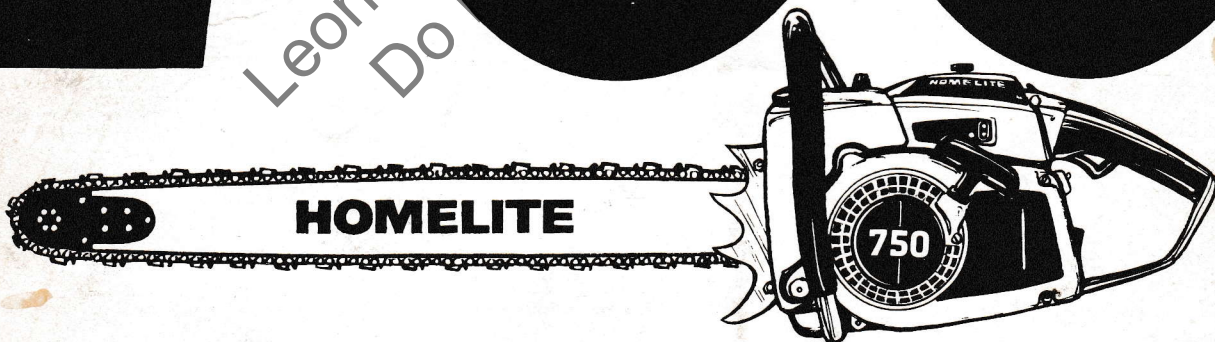
PART NO. 17105

Parts List

Printed in U.S.A.
Price .35

750

Leon's Chainsaw Parts
Do Not Buy or Repair



PROFESSIONAL CHAIN SAW

HOMELITE **TEXTRON**

Homelite Division of Textron Inc.

TOOLS & SERVICE MATERIALS

Body, Assembling	23136-2
†CD TEST LAMP	A-24994
COLLAR & PLUNGER	A-24876
ANVIL-Ball bearing installation	17081-1
GAUGE- Feeler (.015/.016 thick) pink	22486
PLIERS- Retaining ring	22828
PLUG- Seal installation (crankcase)	24966
PLUG- Seal removal (crankcase)	A-24986
SLEEVE- Seal assembly (crankcase)	23759
SLEEVE- Crankshaft brg.	17082-1
PLUG- Seal removal (backplate)	17027
PLUG- Bearing & seal installation & removal	17025
JACKSCREW- assy.	A-23137
REAMER- Valve seat	A-24884
TOOL & PLUNGER- Piston pin	A-24871
WRENCH- Combination	A-24284
WRENCH- Combination	A-23937-B
WRENCH- Socket (S650 only)	68651
KEY- Hex	94624
WRENCH- Spanner	94101
ANVIL	17091
ANVIL- Ball brg.	17088-1
ROTOR- Puller	A-17106-A
Includes:	
SCREW- Hex hd.	80627
STUD	17108
RING	93972
WRENCH- Spanner	A-93791
Includes:	
PIN	23717-A

ACCESSORY

ROPE- Starting #5, 250' reel	57084-1
TUBING- Rubber (10 ft.)	93112-99
TUBING- Rubber (10 ft.)	93157-99
COMPOUND DC4 (8 oz. tube)	22636-A

PAINT

SPRAY CAN- Black	22772
SPRAY CAN- Red	23475

Leorio Chainsaw Parts & Repair
Do Not Sell or Reproduce

KIT, Chain Brake	A-93012-A		SPRING- Torsion	93086	1
Includes:			SLEEVE	93260	1
PIN- Dowel	59751	1	WASHER	93282	3
COVER- Gear	12134	1	LEVER- Sleeve	93296	1
SCREW- Guide Bar adjusting	A-12746	1	SCREW- Shoulder	93773	1
SLEEVE- Headed	70313	1	HANDLE BAR	A-93008	1
BUSHING	70693	1	DRUM & HUB	A-70868-1	1
ADJUSTER- Guide bar	A-70694	1			
DECAL	70717	1	KIT- Hand guard	A-93967	
SPRING- Chain brake	70873	1	Includes:		
COVER- Drivecase	70876-2	1	SCREW- Sems hex hd.	88052	2
BAND- Brake	70879	1	SCREW	88055	2
LEVER- Lock	70884	1	BRACKET- Hand guard	12238-3	1
STUD- Spring mounting	70900	1	GUARD- Hand	A-93968	1
BEARING- Roller	70892	1	Includes:		
LEVER- Brake	A-70902	1	WASHER	70788	1
RING- Retaining	70925	1	WASHER- FLAT	84020	1
SCREW-	80912	1	SCREW- Shoulder	93914	1
SCREW	82251	1			
PIN- Guide bar adjust.	93039	1			

750 & 750E AUTOMATIC SAWS

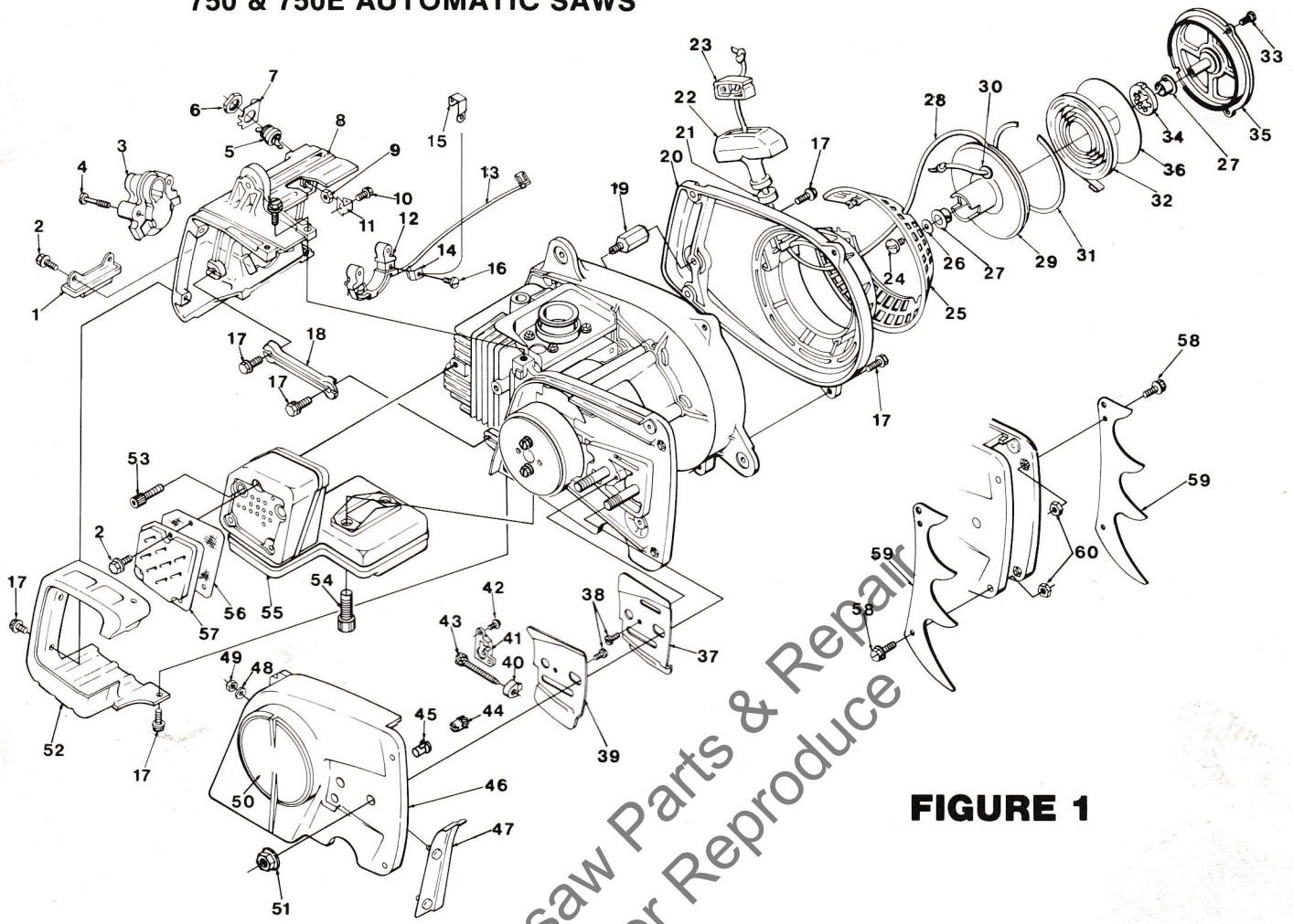


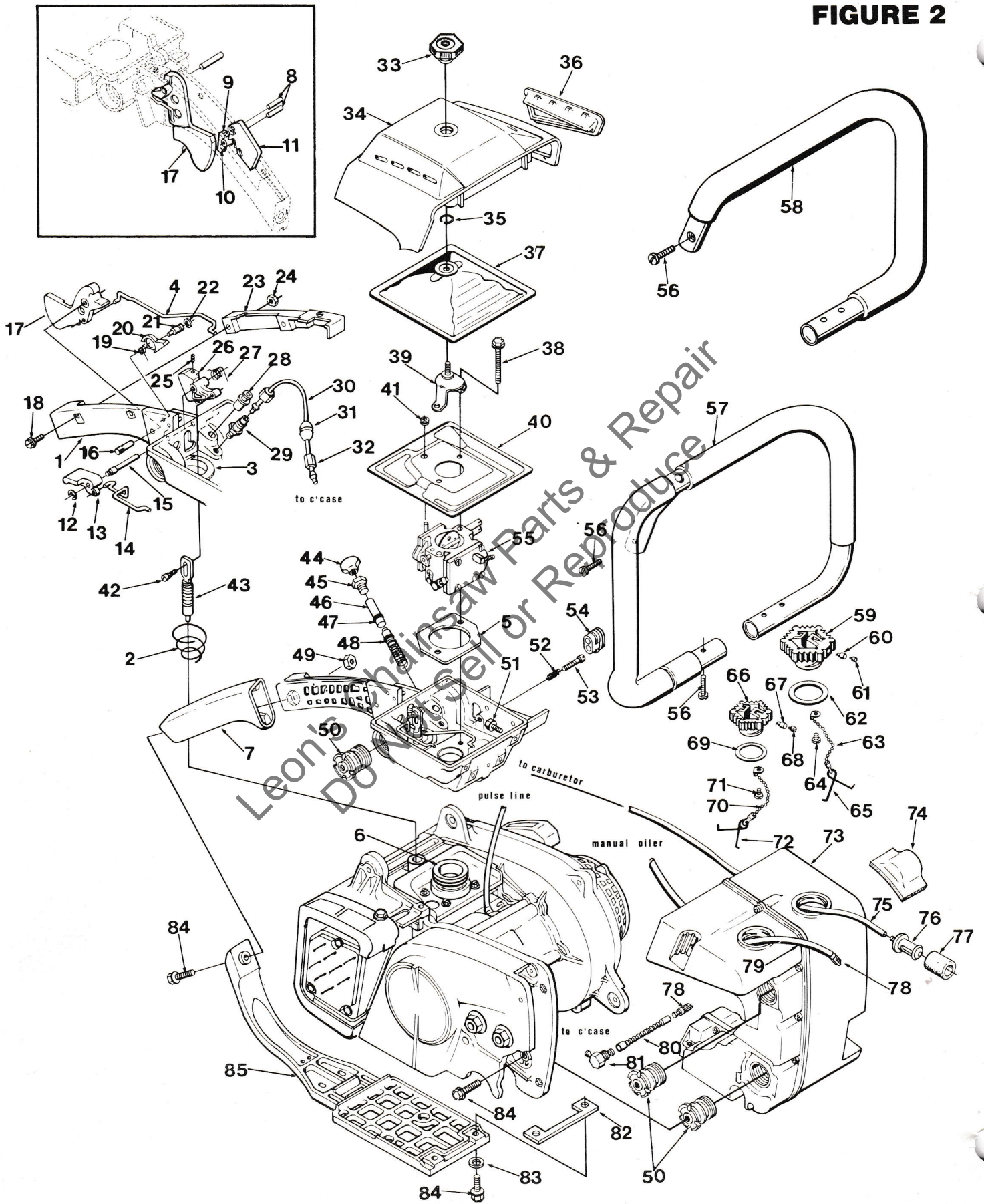
FIGURE 1

No.	Description	Part No.	Qty.	No.	Description	Part No.	Qty.
1	SNUBBER- Rear	A-12803-A	1	31	RING- Retaining	12637	1
2	SCREW- Hex Sems, 8-32 x 3/8	88041	5	32	SPRING- Rewind	93275	1
3	TRANSFORMER	A-12299-A	1	33	SCREW- Pan hd., 8-32 x 1/2	82254	3
4	Includes: SCREW	70068	2	34	LOCK- Rewind spring	12957	1
5	GROMMET (shown in Fig. 3)	12191	1	35	COVER- Starter	A-93917	1
6	SWITCH- Grounding	A-57650-A	1	Includes:			
7	NUT- Hex	72084-A1	1	36	SHIELD- Rewind spring (inner)	93276	1
8	PLATE- Indicating (RUN-STOP)	12793-A	1	37	PLATE- Guide bar (inner)	70399	1
9	SHIELD- Cylinder	12606-2B	1	38	SCREW- Truss hd., 6-32 x 3/8	80548	2
10	NUT- Hex, 10-24	81208	2	39	PLATE- Guide bar (outer)	70400	1
11	SCREW- Hex Sems, 10-24 x 3/4	88051	3	40	PIN- Guide bar adjustment	93039	1
12	RECEPTACLE- Transformer	A-70088	1	41	COVER- Gear	12134	1
13	LEAD- Module	A-12719	1	42	SCREW- Pan hd., 6-32 x 3/8	82251	2
14	CONTACT- Transformer	12788	2	43	SCREW- Guide bar adjustment	A-12746	1
15	CONTACT- Ground	70720	1	44	ADJUSTOR- Guide bar	A-70694	1
16	SCREW- Pan hd. Plastite, #6 x 3/8&	82215	2	45	BUSHING	70693	1
17	SCREW- Hex Sems, 10-24 x 5/8	88050	11	46	COVER- Drivecase	A-93749	1
18	BRACE- Cylinder shield	12773	1	Includes:			
19	SPACER- w/stud	A-93055	1	47	GUARD- Chain	A-70159	1
20	HOUSING- Rewind starter	A-12812	1	Includes:			
21	BUSHING- Starter rope	67177	1	48	WASHER- Belleville	12940	2
22	GRIP- Starter rope	A-69962-A	1	49	NUT- Hex, 8-32	81009	2
23	Includes:			50	DECAL	70241	2
24	INSERT- Rope retaining	70018-A	1	51	NUT- Hex flange, 3/8-16	12860	2
25	SCREW- Pan hd., 10-24 x 1/2	82216	1	52	SHIELD- Muffler	12969-3	1
26	SCREEN- Starter housing	12625-A	1	53	SCREW- Soc. hd. cap, 1/4-24 x 3/4	82283	2
27	WASHER- Retaining	12789	1	54	SCREW- Soc. hd. cap, 1/4-20 x 3/4	82316	2
28	BUSHING- Starter post	12639	2	55	MUFFLER	A-12739-1B	1
29	ROPE- Starter (48" long) #5	A-93875	1	56	ARRESTOR- Spark	A-93899-A	1
30	PULLEY- Starter	A-70198	1	57	CAP- Muffler exhaust	12824-1	1
Includes:				58	SCREW- Hex Sems, 10-24 x 1/2	88049	4
31	WASHER- Flat (nylon)	93862	1	59	PLATE- Bumper (long spike)	69275	2
				60	NUT- Hex, 10-24	81208	4

*Denotes new parts

750 & 750E AUTOMATIC SAWS

FIGURE 2



750 & 750E AUTOMATIC SAWS

No.	Description	Part No.	Qty.	No.	Description	Part No.	Qty.
1	HANDLE- Throttle Includes:	A-12813-1	1	45	NUT	65082	1
2	SPRING- Conical	12867	1	46	PLUNGER- Oil pump (manual) Includes:	A-68061-A	1
3	BOOT- Sealing	12799-A	1	47	"O" RING	58406	1
4	ROD- Throttle	12642-B	1	48	"O" RING	59074	1
5	SPACER- Heat insulating	12991	1		PLUNGER - Pump (not shown)	A-67235-A	1
6	CONNECTOR- Carburetor	12623	1	49	NUT- Hex, 10-24	81208	1
7	GRIP- Throttle handle (Note 1)	70019-2	1	50	ISOLATOR- Vibration	A-12708-B	5
8	PIN- Groove	64939	2	51	SCREW- Hex Sems, 10-24 x 5/8	88050	4
9	LEVER- Trigger lock	93132	1	52	SPRING- Idle adjustment	12784	1
10	SPRING- Torsion	93623	1	53	SCREW- Idle adjustment	12783	1
11	TRIGGER- lock (750E)	93131	1	54	GROMMET- Carburetor needle	12891	1
12	RING- Retaining	69071	1	55	CARBURETOR- (WB-9)	A-94108	1
13	LEVER- Choke	12620	1	56	SCREW- Soc. hd., 10-24 x 7/8	82257	4
14	ROD- Choke	12643	1	57	HANDLEBAR- Wrap around(750)	A-12714	1
15	PIN- Pivot (compression arm)	12682	1	58	HANDLEBAR- Flush cut (opt.)(750E)	A-12898-A	1
16	PIN- Trigger	12983	1	59	CAP- Fuel filler Includes:	A-69500-A	1
17	TRIGGER- Throttle (Note 1)	12618	1	60	VALVE- Check (oval duckbill)	69451	1
18	SCREW- Pan hd., 8-32 x 3/8	82253	2	61	FILTER- Filler cap	69454	1
19	SPRING- Torsion (compression arm)	12681	1	62	GASKET- Fuel cap	69501	1
20	CAM- Compression release	12621	1	63	CHAIN- Bead	69502	1
21	PIN- Pivot (compression cam)	12680	1	64	SCREW- Pan hd., Plastite, #6 x 1/4	82256	1
22	RING- Retaining	12683	1	65	RETAINER	69503	1
23	COVER- Throttle handle	12616-2A	1	66	CAP- Oil filler Includes:	A-12222	1
24	NUT- Hex, 8-32	81223	2	67	VALVE- Check (oval duckbill)	69451	1
25	SCREW- Set, 10-32 x 3/8	12864	1	68	FILTER- Filler cap	69454	1
26	ARM- Compression release valve	12644-1	1	69	GASKET- Oil cap	12126	1
27	SPRING- Torsion (compression arm)	12656	1	70	CHAIN- Bead	69502	1
28	VALVE- Check (inlet)	A-12987	1	71	SCREW- Pan hd., Plastite, #6 x 1/4	82256	1
29	VALVE- Check (outlet)	A-65077	1	72	RETAINER	69503	1
30	LINE- Manual oil discharge Includes:	A-70079	1	73	TANK- Fuel and oil Includes:	A-70567-A	1
31	SLEEVE- 1/8 Compression	25301	2	74	BUMPER- Fuel tank	12863	1
32	NUT- Compression (5/16-24)	25302	1	75	LINE- Fuel	93112-42	1
33	NUT- Filter cover mounting	A-65272	1	76	PICK UP- Fuel Includes:	A-59251	1
34	COVER- Air filter	A-93016-2A	1	77	FILTER- Felt	59253-1	1
35	RING- Retaining	58319-A	1	78	FINDER- Oil	A-64293	2
36	INTAKE- Air (air filter cover)	12893	1	79	LINE- Oil	93112-48	1
37	FILTER ELEMENT- Air	A-12742-A	1	80	LINE- Oil, flexible	63605	1
38	SCREW- Hex Sems, 10-24 x 2	88057	2	81	ELBOW- 90°, oil line	12661	1
39	BRACKET- Air filter cover	A-93001	1	82	SPACER- Heat insulating	12979	1
40	SHIELD- Carburetor chamber Includes:	A-93294	1	83	WASHER	12984	2
41	GROMMET	53312	1	84	SCREW- Hex Sems, 10-24 x 3/4	88051	7
42	SCREW- Shoulder	12861	1	85	BRACE- Throttle handle	12610-2C	1
43	VALVE- Compression release	A-12712	1				
44	BUTTON	65084	1				

NOTE 1: Units without trigger lock items
#8, 9, 10 and 11 must use 70019-A Grip.

750 & 750E AUTOMATIC SAWS

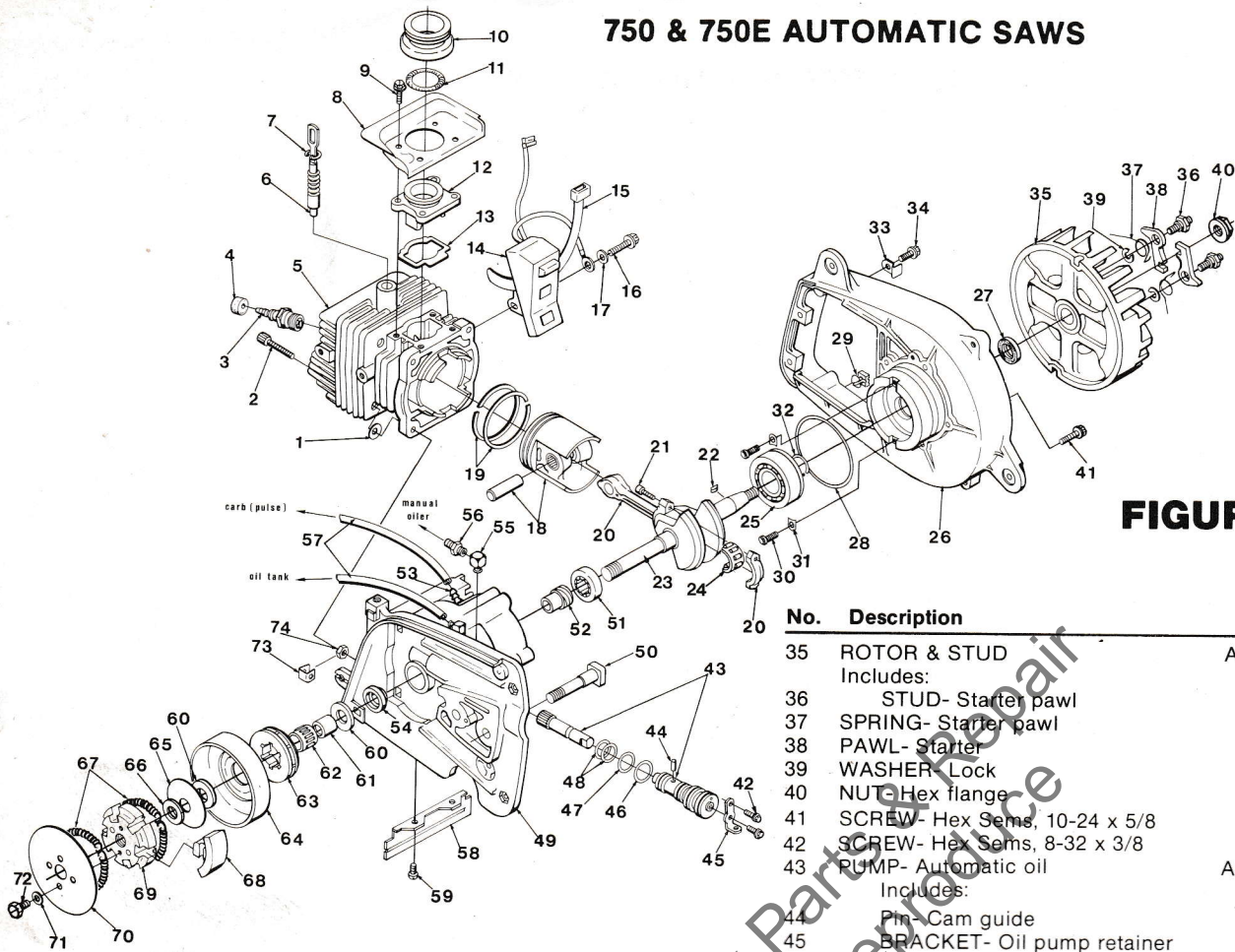


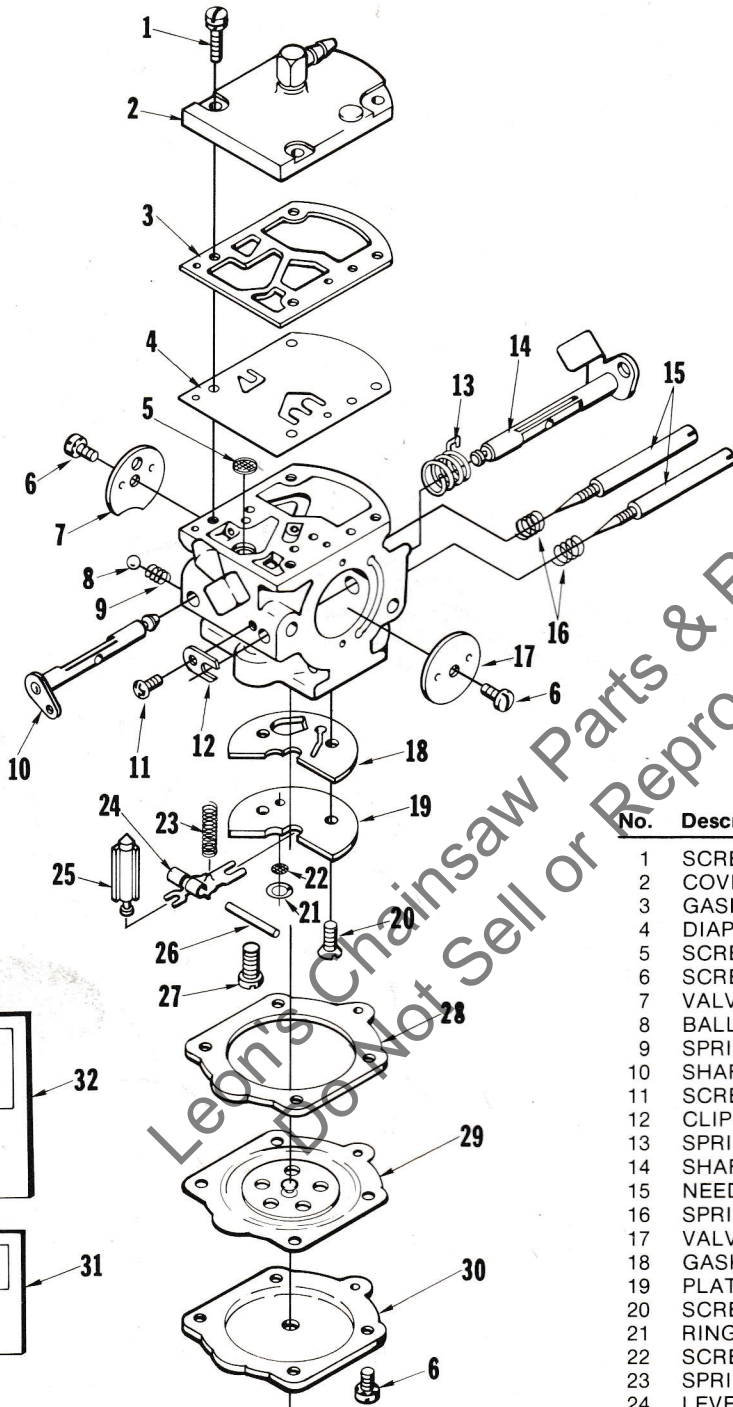
FIGURE 3

No.	Description	Part No.	Qty.
1	WASHER- Conical	12631	4
2	SCREW- Socket hd., 10-24 x 1	88053	4
3	SPARK PLUG (CJ-3)	70210-S	1
	SPARK PLUG (UCJ-4G) accessory	68713-S	1
4	GROMMET- Spark plug	12191	1
5	CYLINDER	A-70489-A	1
	Includes:		
6	VALVE- Compression	A-12712	1
7	RING- Retaining	75120	1
8	DEFLECTOR- Air	12794	1
9	SCREW- Hex Sems, 8-32 x 5/8	88043	4
10	CONNECTOR- Carburetor	12623	1
11	SPRING- Garter	12858	1
12	MANIFOLD- Intake	12622-B	1
13	GASKET- Intake manifold	12648	1
14	MODULE & CORE	12669-A	1
15	TIE- Cable (module leads)	12298	1
16	SCREW- Hex Sems, 8-32 x 1 1/4	88045	3
17	WASHER	84101	1
18	PISTON & PIN	A-70572-A	1
	Includes:		
19	PISTON RING	69193-A	2
20	ROD- Connecting	A-70274	1
	Includes:		
21	SCREW- Soc. hd., 10-32 x 5/8	80345	2
22	KEY- Woodruff	75078	1
23	CRANKSHAFT	70236-2	1
24	BEARING- Cage (14 rollers)	A-70610	1
25	BEARING- Ball	70844	1
26	PLATE- Back	A-70896	1
	Includes:		
27	SEAL	53444	1
28	"O" RING	67559	1
29	RETAINER- Lead	12859	1
30	SCREW- Tor x	70851	2
31	WASHER- Lock	63905	2
32	RING- Retaining	70843	1
33	CLIP- Wire (switch lead retainer)	12896	1
34	SCREW- Hex Sems, 10-24 x 3/4	88051	1

No.	Description	Part No.	Qty.
35	ROTOR & STUD	A-93133	1
	Includes:		
36	STUD- Starter pawl	93079	2
37	SPRING- Starter pawl	65375	2
38	PAWL- Starter	58756	2
39	WASHER- Lock	70901	2
40	NUT- Hex flange	81236	1
41	SCREW- Hex Sems, 10-24 x 5/8	88051	5
42	SCREW- Hex Sems, 8-32 x 3/8	88041	2
43	PUMP- Automatic oil	A-12723	1
	Includes:		
44	Pin- Cam guide	12108	1
45	BRACKET- Oil pump retainer	12076	1
46	"O" RING	12854	1
47	"O" RING	12095	1
48	"O" RING	12853	2
49	CRANKCASE (See Note 1)	A-93957	1
	Includes:		
50	STUD- Guide bar (See Note 2)	93918	2
51	BEARING- Roller	70409-A	1
52	GEAR- Worm	12071	1
53	FITTING	94619	1
54	SEAL	12306	1
55	CONNECTOR- Elbow 90°	31734	1
56	FITTING- Straight	68393	1
57	LINE- Flexible	93157-16	2
58	SHIELD- Heat	12777	1
59	SCREW- Pan hd., 8-32 x 3/8	82253	2
60	WASHER- Thrust	12668	2
61	RACE- Inner	12882	1
62	BEARING- Needle (unit cage)	64124	1
63	SPROCKET- Rim (7 tooth .404 pitch)	63285	1
64	HUB & DRUM- 7 Spline	A-68727-A	1
61	RACE- Inner (opt.)	12666	1
62	BEARING- Needle (unit cage) (opt.)	65393	1
63	SPROCKET- Rim (8 tooth .404 pitch) (opt.)	65960	1
64	HUB & DRUM- 6 Spline (opt.)	A-65991	1
65	WASHER- Thrust	12907	1
66	WASHER- Thrust	12667	1
	CLUTCH	A-93287	1
	Includes:		
67	SPRING- Clutch	93289	2
68	SHOE- Clutch	93281-1	6
69	SPIDER- Clutch	93288-1	1
70	COVER- Clutch	A-24921-A	1
	Includes:		
71	WASHER- Belleville	12021	2
72	SCREW- Hex hd., 10-24 x 1/2	80361-2	2
73	RETAINER- Nut	12689	4
74	NUT- Hex, 10-24	81208	4
	†SPROCKET & DRUM- Spur (8T, 3/8 pitch)	A-12819	1

Note 1- Prior to Lot #8074 use Crankcase A-70470
 Note 2- Prior to Lot #8074 use Stud 58334-A

750 & 750E AUTOMATIC SAWS



CARBURETOR A-94108 WB-9

No.	Description	Part No.	Qty.
1	SCREW- Pump cover	64694	4
2	COVER- Fuel pump	12829	1
3	GASKET- Pump	†12836	1
4	DIAPHRAGM- Pump	†12839	1
5	SCREEN- Inlet	64243	1
6	SCREW	64689	6
7	VALVE- Choke	12833	1
8	BALL- Choke friction	†12834	1
9	SPRING- Choke friction	†12841	1
10	SHAFT- Choke	12832	1
11	SCREW- Clip	†64693	1
12	CLIP- Throttle shaft	†12880	1
13	SPRING- Throttle return	†12842	1
14	SHAFT- Throttle	12830	1
15	NEEDLE- Adjustment	†12843	2
16	SPRING- Needle adjustment	†64236	2
17	VALVE- Throttle	12831	1
18	GASKET- Circuit	†12835	1
19	PLATE- Circuit	93155	1
20	SCREW- Circuit plate	70082	2
21	RING- Screen retaining	93208	1
22	SCREEN- Check valve	93207	1
23	SPRING- Metering lever	†94125	1
24	LEVER- Metering	64245	1
25	VALVE- Inlet needle	†64229	1
26	PIN- Metering lever	†64244	1
27	SCREW- Metering lever pin	†64688	1
28	GASKET- Metering diaphragm	†64231	1
29	DIAPHRAGM- Metering	†64235	1
30	COVER- Metering diaphragm	12878	1
31	GASKET- Set	†12837	1
32	REPAIR KIT	94131	1

† Indicated contents of Repair Kit 94131
 ‡ Indicated contents of Gasket Set 12837

E18712BEX

HOMELITE DIVISION OF TEXTRON INC.

P.O. BOX 7047
14401 CAROWINDS BOULEVARD
CHARLOTTE, N.C. 28217

Leon's Chainsaw Parts & Repair
Do Not Sell or Reproduce

HOMELITE **TEXTRON**

Homelite Division of Textron Inc.