

# HOMELITE

## CHAIN SAW



Leon's Chainsaw Parts & Repair  
Do Not Sell or Reproduce

**707**  
**D**

**PARTS LIST**



# HOMELITE CHAIN SAW MODEL 707 D

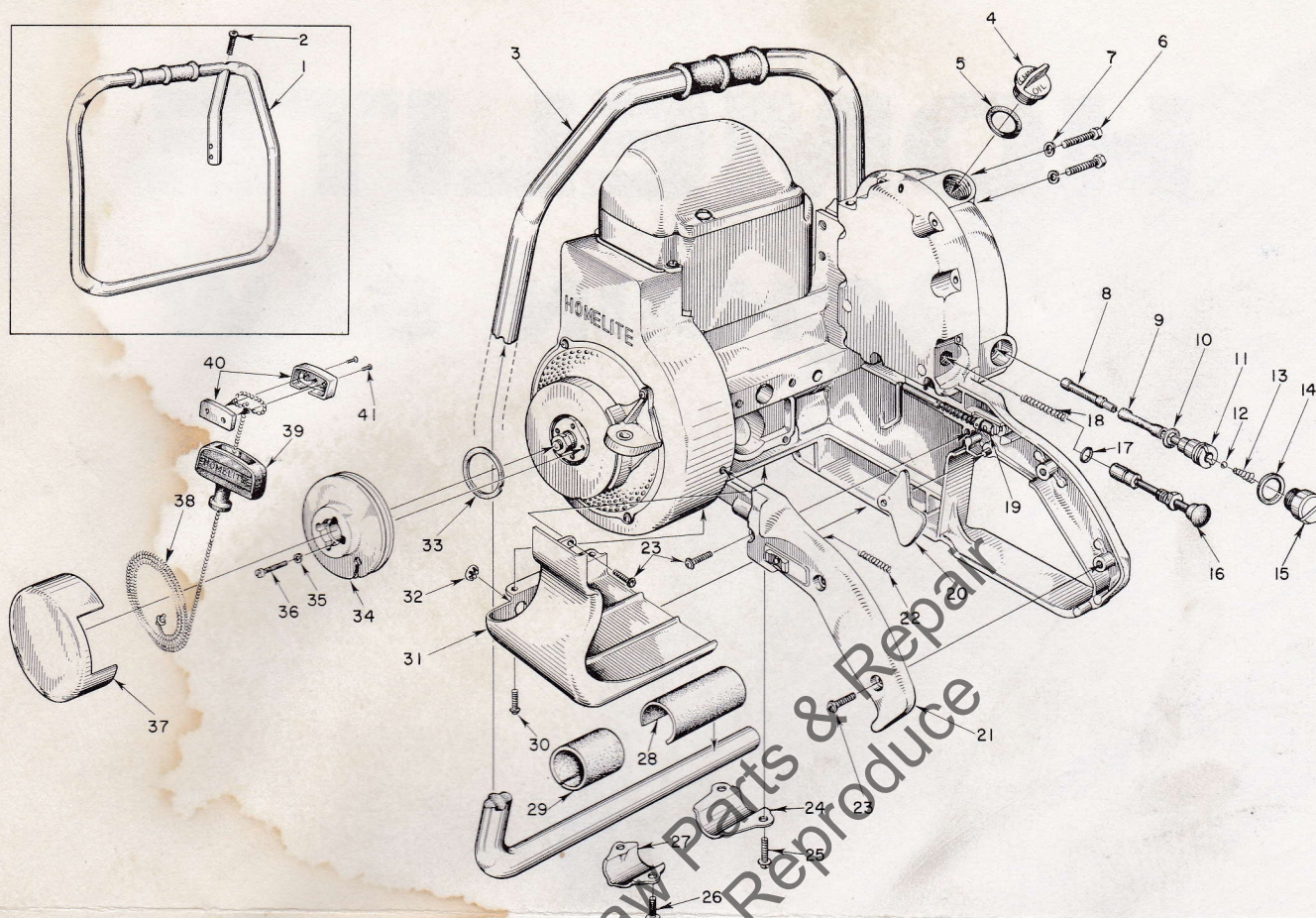


FIGURE 1 — STARTER, HANDLE, GRIP AND LUBRICATOR PARTS

Index No.	Part No.	Description	No. Required
1	A-57664	HANDLE — wrap-around (707DA) Includes	1
2	80308	SCREW — $\frac{5}{16}$ -18 x 1 socket hd.	1
3	A-57661	HANDLE — Flush-cut (707D)	1
4	A-56448	CAP — oil Includes	1
5	72280	GASKET	1
6	80087	SCREW — $\frac{5}{16}$ -18 x 1 1/2 hex hd.	2
7	83003	WASHER — $\frac{5}{16}$ lock	2
8	AA-55259-A	FINDER — oil	1
9	55133-A	SLEEVE — flexible oil	1
10	55110	GASKET	1
11	55109-A	FITTING — check valve	1
12	25527	BALL ( $\frac{5}{32}$ dia.)	1
13	55288-A	SPRING	1
14	55107	GASKET	1
15	A-55628	CAP — supply line	1
16	A-57834	OIL PUMP PLUNGER ASSEMBLY Includes	1
17	74388	"O" RING	1
18	71762	SPRING	1
19	A-55630	ROD — throttle Includes	1
	55045-A	SPRING — throttle rod	1
20	AA-55207	TRIGGER — throttle	1

Index No.	Part No.	Description	No. Required
21	A-55631	COVER — grip Includes	1
	AA-55282	LOCK — throttle Includes	1
22	72970	SPRING — throttle lock	1
23	80560	SCREW — 8-32 x 1/2 pan hd.	4
24	55614	CLAMP — handle bar (drive case)	1
25	80581	SCREW — 1/4-20 x 5/8 hex hd.	2
26	80821	SCREW — 12-24 x 1/2 hex hd.	2
27	56282-A	CLAMP — handle bar (fan housing)	1
28	55685	CUSHION — rubber	1
29	56281	CUSHION — rubber	1
30	80625	SCREW — 10-32 x 1/2 pan hd.	2
31	55512-2	SHIELD — carburetor	1
32	55681	PLUG — button	1
33	71588	SHIM — plastic	As req'd.
34	55597-2	PULLEY	1
35	83004	WASHER — lock #6	4
36	80475	SCREW — 6-32 x 3/4 fil. hd.	4
37	* AA-73234-4	COVER — starting pulley	1
38	55898	ROPE — starting	1
39	55937	GRIP — starting	1
40	A-56081	INSERT — grip (w/screws) Includes	1
41	80619	SCREW	2

\*Use 57895 - DECAL (707D)



# HOMELITE CHAIN SAW MODEL 707 D

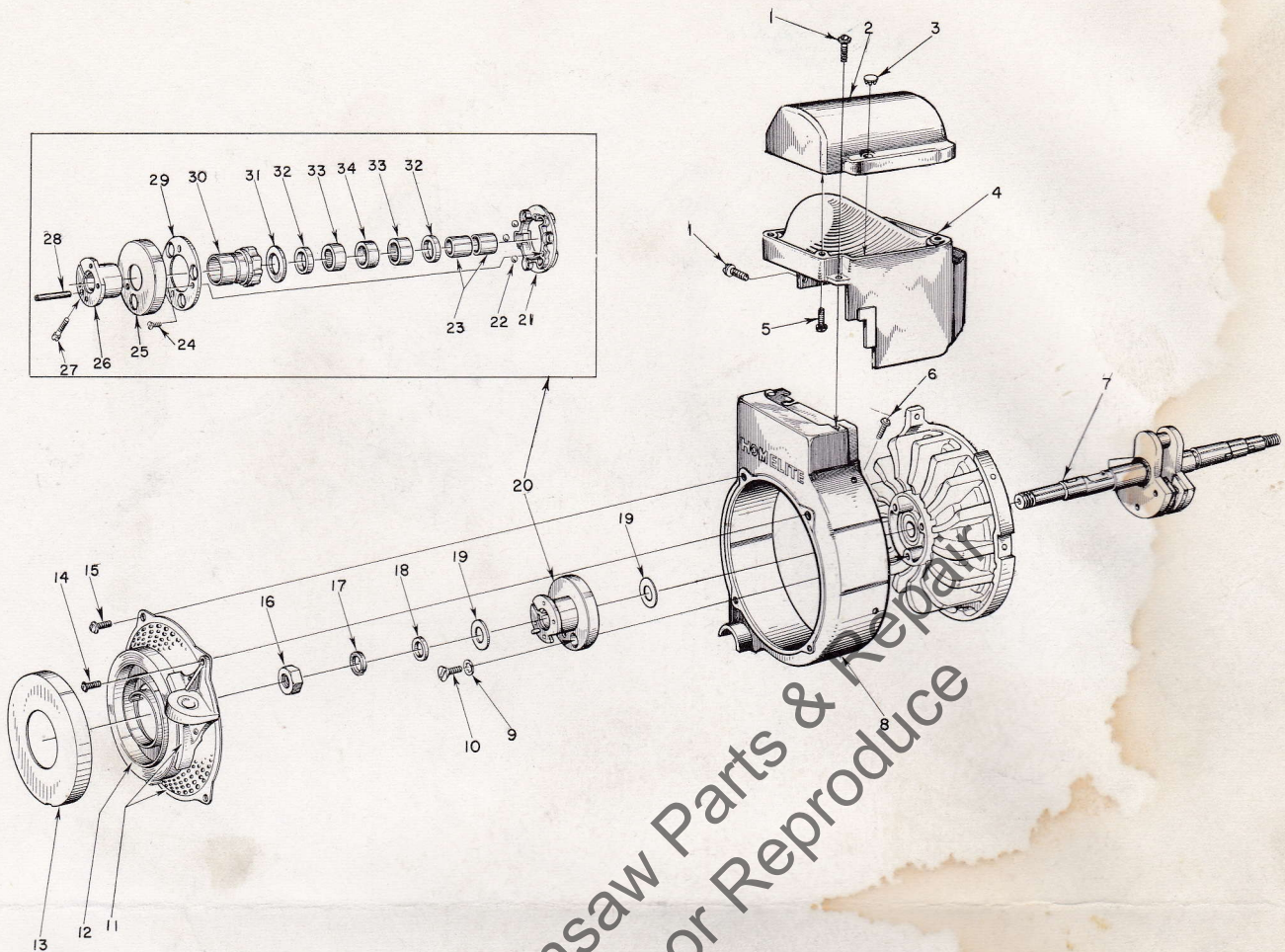


FIGURE 2 — BALL DRIVE AND AIR SHROUD

Index No.	Part No.	Description	No. Required
1	80560	SCREW — 8-32 x 1/2 pan hd.	3
2	56968	CAP — cylinder shield	1
	57029	DECAL — "Homelite"	1
3	32814	PLUG — button	1
4	56967-1	SHIELD — cylinder	1
5	80513	SCREW — 6-32 x 1/2 pan hd.	4
6	80577	SCREW — 8-32 x 3/8 pan hd.	4
7	A-57546	CRANKSHAFT	1
8	A-57648	HOUSING — fan	1
9	83074	WASHER — lock, countersunk 1/4	3
10	80173	SCREW — 1/4-20 x 5/8 flat hd.	3
11	A-56088	SCREEN and BRACKET	1
	*A-56085	BRACKET and BUSHING	1
		Includes	
	55363-A	BUSHING	1
12	56497	SPRING — recoil	1
13	71603	COVER — spring housing	1
14	80576	SCREW — 10-32 x 9/16 (through bracket)	1
15	80579	SCREW — 10-32 x 3/8 pan hd.	3
16	81110	NUT — 7/16-20 hex — jam	1
17	83019	WASHER — lock, 7/16	1

Index No.	Part No.	Description	No. Required
18	84055	WASHER — flat aluminum, 7/16	1
19	55652	WASHER — thrust	2
20	A-56899	BALL DRIVE	1
		Includes	
21	71563-C	PLATE — ball drive	1
22	30355-1	BALL — steel	3
23	74221	RACE — inner	2
24	80464	SCREW — 5-40 x 9/16 flat hd.	3
25	56896	CUP — sealing	1
26	A-57098	HUB — ratchet	1
		Includes	
27	72295-A	SCREW — ratchet hub	1
28	57065	PIN — spiral	1
29	71570-B	RETAINER — ball	1
	AA-72306-1	RATCHET and BEARING	1
		Includes	
30	AA-73549	RATCHET	1
		Includes	
31	73525	WASHER — formica	1
32	71597	SEAL — garlock	2
33	71596	BEARING — needle	2
34	71595	WICK — felt	1

\*Assemble to screen with 85073 rivet



# HOMELITE CHAIN SAW MODEL 707 D

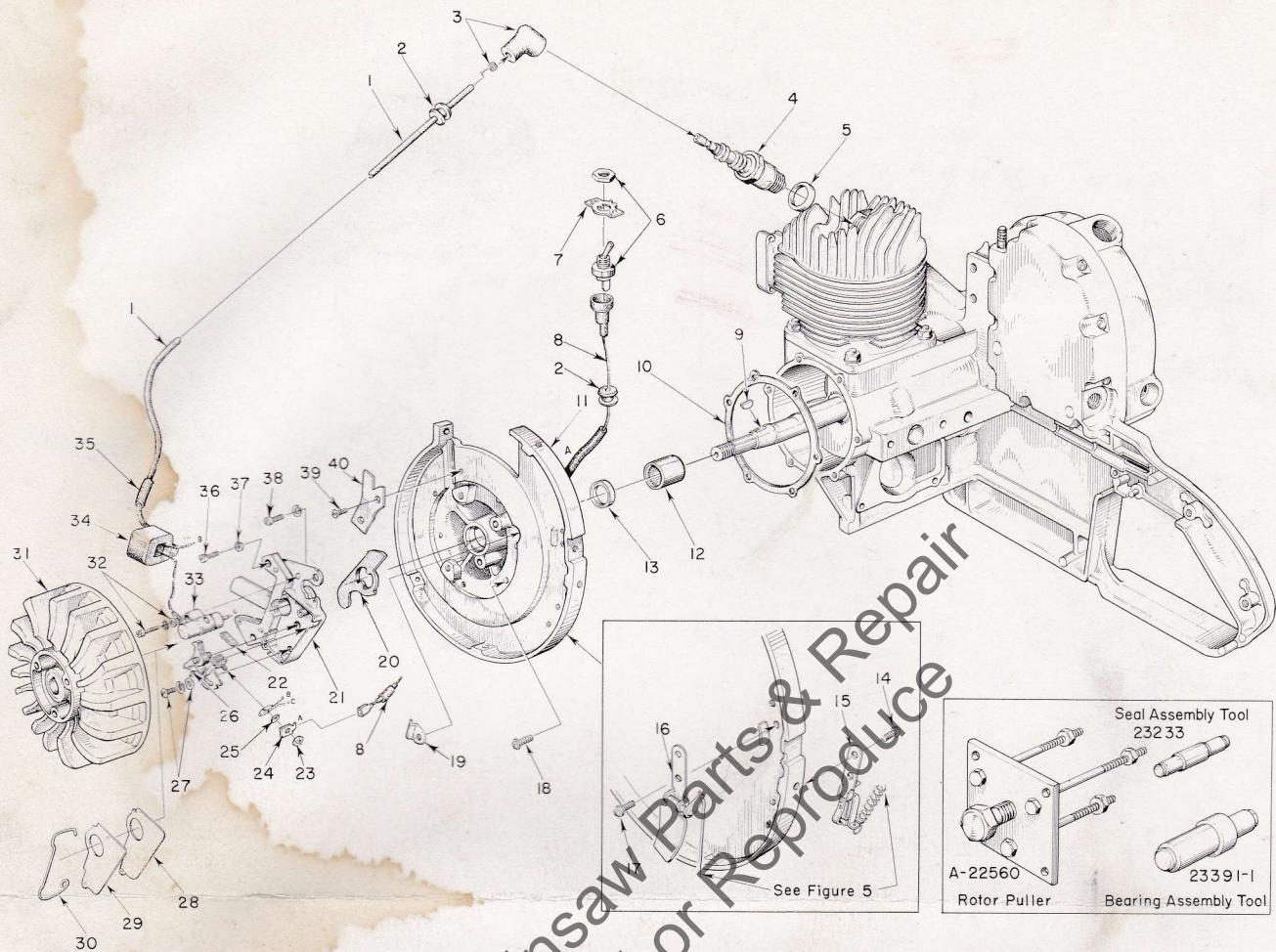


FIGURE 3 — IGNITION AND GOVERNOR PARTS

Index No.	Part No.	Description	No. Required
1	55235-A	LEAD — high tension .....	1
2	60929	GROMMET .....	2
3	A-55373	TERMINAL — "Sparky" (cover and spring) ..	1
4	71530-S	SPARKPLUG (HO-8A) .....	1
5	25038	GASKET (included with spark plug) .....	1
6	A-57716	SWITCH — Toggle (mount on adapter) .....	1
		Includes	
7	55879	PLATE — "on-off" .....	1
8	A-57684	LEAD — ground (with terminals, sleeve, grommet and cover) .....	1
9	75078	KEY — rotor .....	1
10	55049	GASKET — back plate .....	1
11	A-57715	BACK PLATE .....	1
		Includes	
12	57533	BEARING — needle .....	1
13	56134	SEAL — garlock .....	1
14	80629	SCREW — 8-32 x 5/16 pan hd. ....	2
15	*A-55645	PLATE — governor adjusting .....	1
16	*A-56150	GOVERNOR .....	1
17	80605	SCREW — 6-32 x 5/16 pan hd. ....	2
18	80576	SCREW — 10-32 x 5/16 pan hd. ....	6
19	57719	CLAMP — ground lead .....	1

Index No.	Part No.	Description	No. Required
20	56292-A	WASHER — sealing mounting .....	1
21	57744	BOX — breaker w/core .....	1
22	55984	WICK — felt .....	1
23	55982	NUT — terminal .....	1
24	57733	TAB — ground terminal .....	1
25	55983	WASHER — terminal .....	1
26	A-57745	POINTS (set) — with pivot post .....	1
27	57749	SCREW GROUP — point fastening .....	1
28	55978-2	GASKET — dust cover .....	1
29	55979	COVER — dust .....	1
30	55980	CLAMP — dust cover .....	1
31	56276	ROTOR .....	1
32	57750	SCREW GROUP — condenser fastening .....	1
33	55987	CONDENSER (with terminal) .....	1
34	55986	COIL (with terminals) .....	1
35	57752	SLEEVE — insulating .....	1
36	80660	SCREW — 10-24 x 7/8 fil. hd. ....	2
37	83046	WASHER — #10 lock .....	3
38	80595	SCREW — 10-24 x 1/2, fil. hd. ....	1
39	80598	SCREW — 6-32 x 5/16 flat hd. ....	2
40	55595-1	CLAMP — high tension lead .....	1

\*Does not include governor rod, see Figure 5.

\*\*Does not include tension spring, see Figure 5.



# HOMELITE CHAIN SAW MODEL 707 D

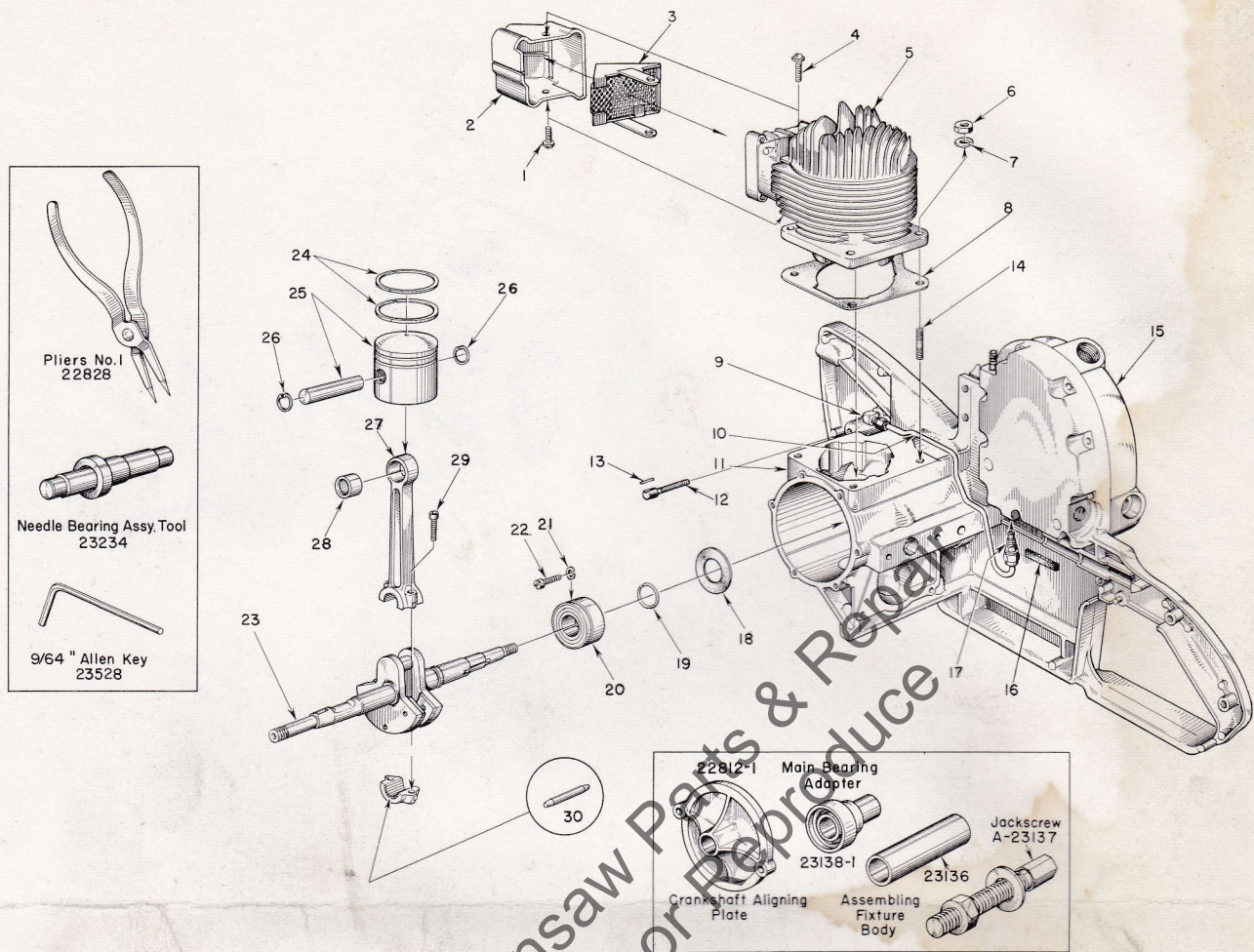


FIGURE 4 — ENGINE ASSEMBLY

Index No.	Part No.	Description	No. Required
1	80625	SCREW — 10-32 x 1/2 pan hd.	1
2	55506-A	DAMPER — heat	1
3	A-56613-A	CAP — exhaust, perforated	1
		OR	
	56396	CAP — plain (not illustrated)	1
		and	
	A-56068-A	ELEMENT — wire screen (not illustrated)	1
4	80583	SCREW — 10-32 x 3/4 pan hd.	1
5	57645	CYLINDER	1
6	81065-2	NUT — hex 1/4 -28	4
7	83009	WASHER — lock 1/4	4
8	56864	GASKET — cylinder	1
9	56707	ELBOW — connector 90°	1
10	A-55625	LINE — chain oil	1
11	A-57640	CRANKCASE w/pivot pin	1
		Includes	
12	57175	BOLT — guide bar	2
13	41738	PIN — spirol	2
14	55871	STUD — cylinder	4
	57713	STUD — fuel tank	1

Index No.	Part No.	Description	No. Required
15	A-55621	COVER — oil reservoir	1
	55833	GASKET — oil reservoir	1
	80622	SCREW — self tapping	9
16	55372	PAD — felt	1
17	A-55824	VALVE — check	1
18	55048-A	GASKET — crankcase sealing	1
19	56109	RING — snap	1
20	56097-S	BEARING — main	1
21	83061	WASHER — lock, special thin	2
22	19238-A	SCREW — main bearing retaining	2
23	*	CRANKSHAFT — see item #7, Fig. #2	1
24	56291	RING — piston	2
25	A-57070	PISTON and PIN	1
		Includes	
26	55095	RING — piston pin retaining	2
27	A-57643	CONNECTING ROD	1
		Includes	
28	55196	BEARING — piston pin	1
29	80806	SCREW — 10-32 x 3/16 allen	2
30	AA-72206	ROLLERS (set of 31)	1



# HOMELITE CHAIN SAW MODEL 707 D

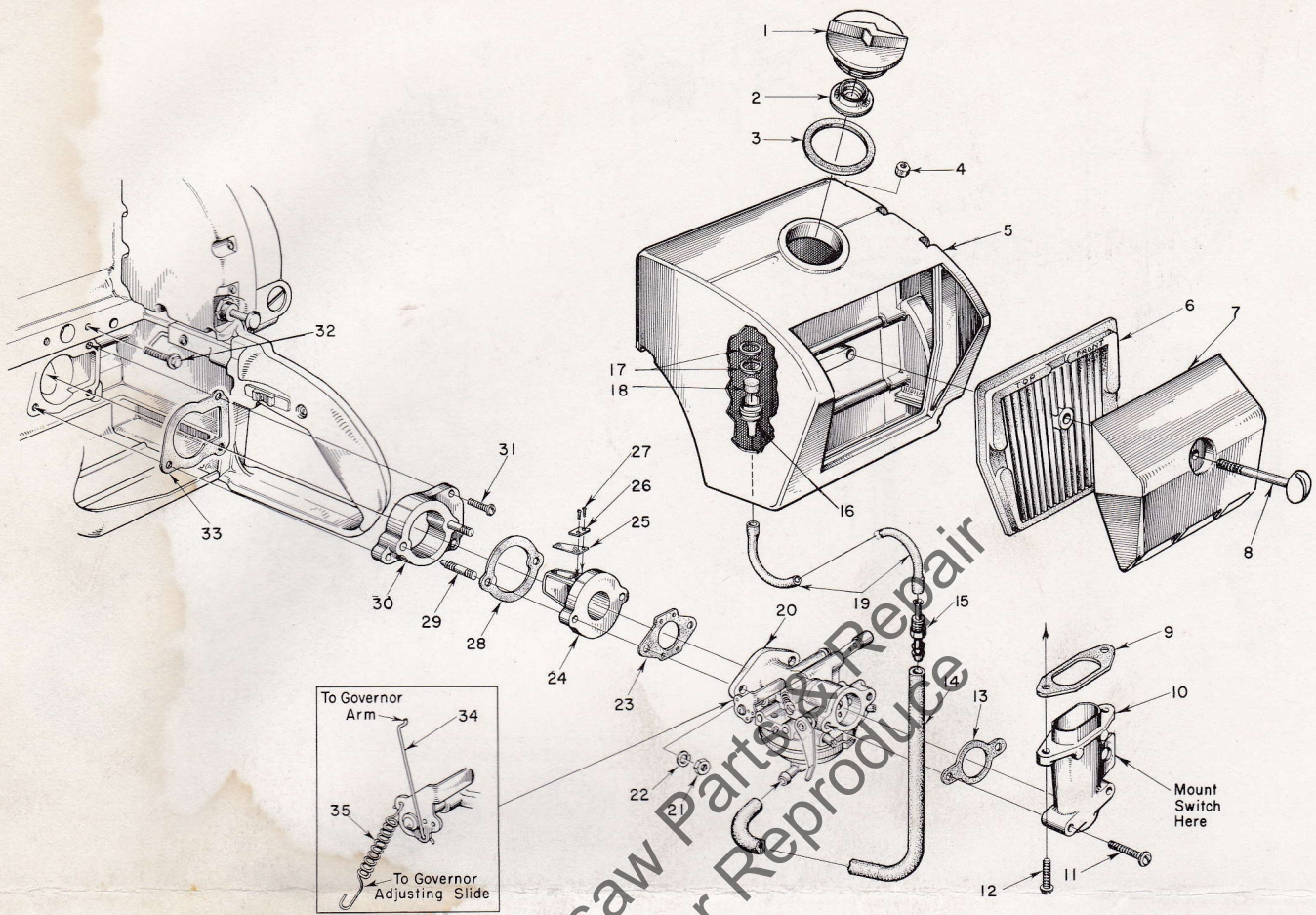


FIGURE 5 — FUEL SYSTEM

Index No.	Part No.	Description	No. Required
1	A-56907	CAP — fuel	1
		Includes	
2	56865	VALVE — relief	1
3	56335	GASKET	1
4	81108	NUT — 1/4-20 hex	1
5	A-57651	FUEL TANK	1
	56400	DECAL — "Homelite" (for fuel tank)	1
	57894	DECAL — 707 D (for fuel tank and cover)	1
6	<del>57619</del>	ELEMENT — air filter	1
7	A-57654	COVER — air filter	1
		Includes	
8	57655	SCREW — cover	1
	81163	NUT — screw retaining (not illustrated)	1
	57899	DECAL — "INSTRUCTIONS" (for cover)	1
9	57659	GASKET — adapter	1
10	57593	ADAPTER — air cleaner	1
11	80791	SCREW — 10-32 x 1 1/8 pan hd.	2
12	80572	SCREW — 10-32 x 5/8 pan hd.	2
13	72971-1	GASKET — air elbow	1
14	57763	FUEL LINE	1
15	57652	FITTING — fuel outlet	1

Index No.	Part No.	Description	No. Required
16	A-56200	STRAINER — outlet w/brass nail	1
		Includes	
17	56196	BUMPER — rubber	2
18	74374	FILTER — felt	1
19	55805	SLEEVE — flexible	1
20	A-57798	CARBURETOR ASSEMBLY — Til. No. HL-117A	1
	57843	REPAIR KIT — carburetor	1
	57842	GASKET SET — carburetor	1
21	81013	NUT — 1/4-20 hex	2
22	83009	WASHER — lock, 1/4	2
23	55553	GASKET — carburetor	1
24	55932	ADAPTER — reed valve	1
25	55941	REED	4
26	55942	PLATE — reed	4
27	80658	SCREW — 4-40 x 3/8 pan hd.	8
28	55946	GASKET — adapter-spacer	1
29	55945	STUD	2
30	55934	SPACER — reed adapter	1
31	80583	SCREW — 10-32 x 3/4 pan hd.	3
32	80677	SCREW — 1/4-20 x 1 1/16	2
33	55116	GASKET — reed valve adapter	1
34	†55642	ROD — governor	1
35	‡55529	SPRING	1

†Assemble governor rod through bottom rear hole.

‡Hook governor spring through forward hole of stop lever.



# HOMELITE CHAIN SAW MODEL 707 D

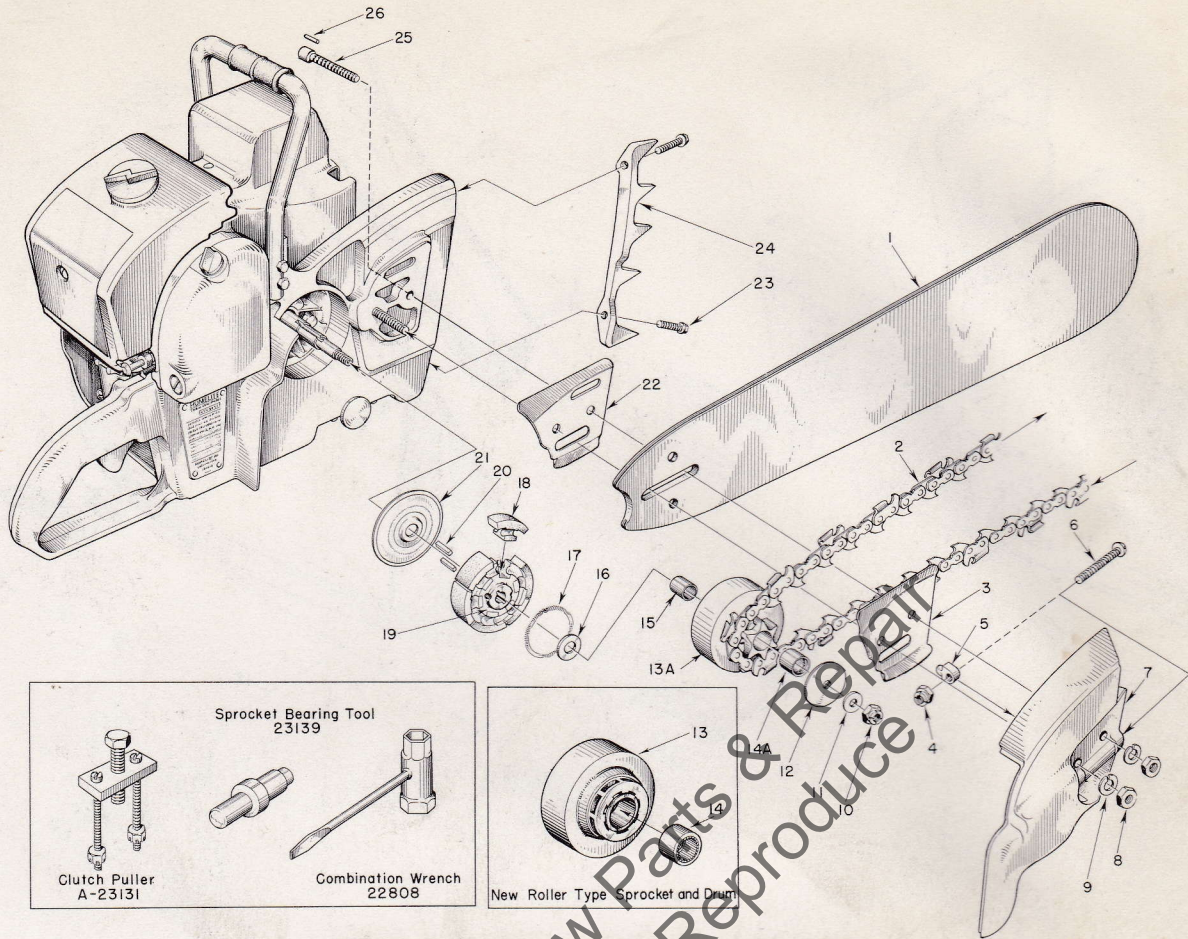


FIGURE 6 — SAW PARTS

Index No.	Part No.	Description	No. Required	Index No.	Part No.	Description	No. Required
<b>INDUCTION HARDENED HOMELITE GUIDE BARS</b>							
1	GW-1416	14" BAR — HOMELITE, welded nose	1	5	55613	PIN — guide bar adjusting	1
	GW-1719	17" BAR — HOMELITE, welded nose	1	6	80617	SCREW — 5/16-18 x 2, rd. hd.	1
	GW-2123	21" BAR — HOMELITE, welded nose	1	7	*	COVER	1
	GW-2528	25" BAR — HOMELITE, welded nose	1	8	81089	NUT — 3/8-16 hex	2
	GW-3033	30" BAR — HOMELITE, welded nose	1	9	83018	WASHER — lock	2
	HT-1416	14" BAR — HOMELITE	1	10	81116	NUT — 3/8-24 flex-lock	1
		7/16" pitch — HOMELITE CHAIN — .063 gauge		11	84010	WASHER — 3/8 flat	1
2	HC-6250-L	14" CHAIN — with kit	1	12	55163-1	WASHER — thrust	1
	HC-6258-L	17" CHAIN — with kit	1	13	†A-57363	SPROCKET and DRUM — 7 Tooth 7 Tooth (7/16" pitch chain)	1
	HC-6266-L	21" CHAIN — with kit	1			Includes	
	HC-6276-L	25" CHAIN — with kit	1	14	77403	BEARING — needle	1
	HC-6287-L	30" CHAIN — with kit	1	13A	†A-56019	SPROCKET and DRUM — 6 Tooth (1/2" pitch)	1
		1/2" pitch — HOMELITE CHAIN — .063 gauge			†A-57347	SPROCKET and DRUM -8 tooth(.404 pitch chain)	1
	HC-1044-L	14" CHAIN — with kit	1			Include	
	HC-1051-L	17" CHAIN — with kit	1	14A	55664-S	BEARING — needle	1
	HC-1058-L	21" CHAIN — with kit	1	15	55661	RACE — inner	1
	HC-1067-L	25" CHAIN — with kit	1	16	55660-1	WASHER — thrust	1
	HC-1077-L	30" CHAIN — with kit	1	17	55123-C	SPRING — clutch	2
		404 pitch — HOMELITE CHAIN — .063 gauge		18	55076-1	SHOE — clutch	2
	HC-5254-L	14" CHAIN — with kit (for 8 tooth sprkt.)	1	19	55075-3	SPIDER	1
	HC-5263-L	17" CHAIN — with kit (for 8 tooth sprkt.)	1	20	55225-1	KEY	2
	HC-5271-L	21" CHAIN — with kit (for 8 tooth sprkt.)	1	21	56101-A	COVER — clutch	1
	HC-5282-L	25" CHAIN — with kit (for 8 tooth sprkt.)	1	22	56871	PLATE — guide bar, inner	1
3	56872-A	PLATE — guide bar, outer	1	23	80573	SCREW — 1/4-20 x 1 1/16 hex hd.	2
	A-55668	COVER — drive case	1	24	55632	PLATE — spiked bumper	1
		Includes		25	57175	BOLT — guide bar (see item 12, Fig. 4)	2
4	81123	NUT — hex lock	1	26	41738	PIN — spirol	2

†Check type and number of teeth on sprocket before ordering.

\*Not Sold Separately

Always furnish saw model and serial number when ordering parts



# HOMELITE CHAIN SAW MODEL 707 D

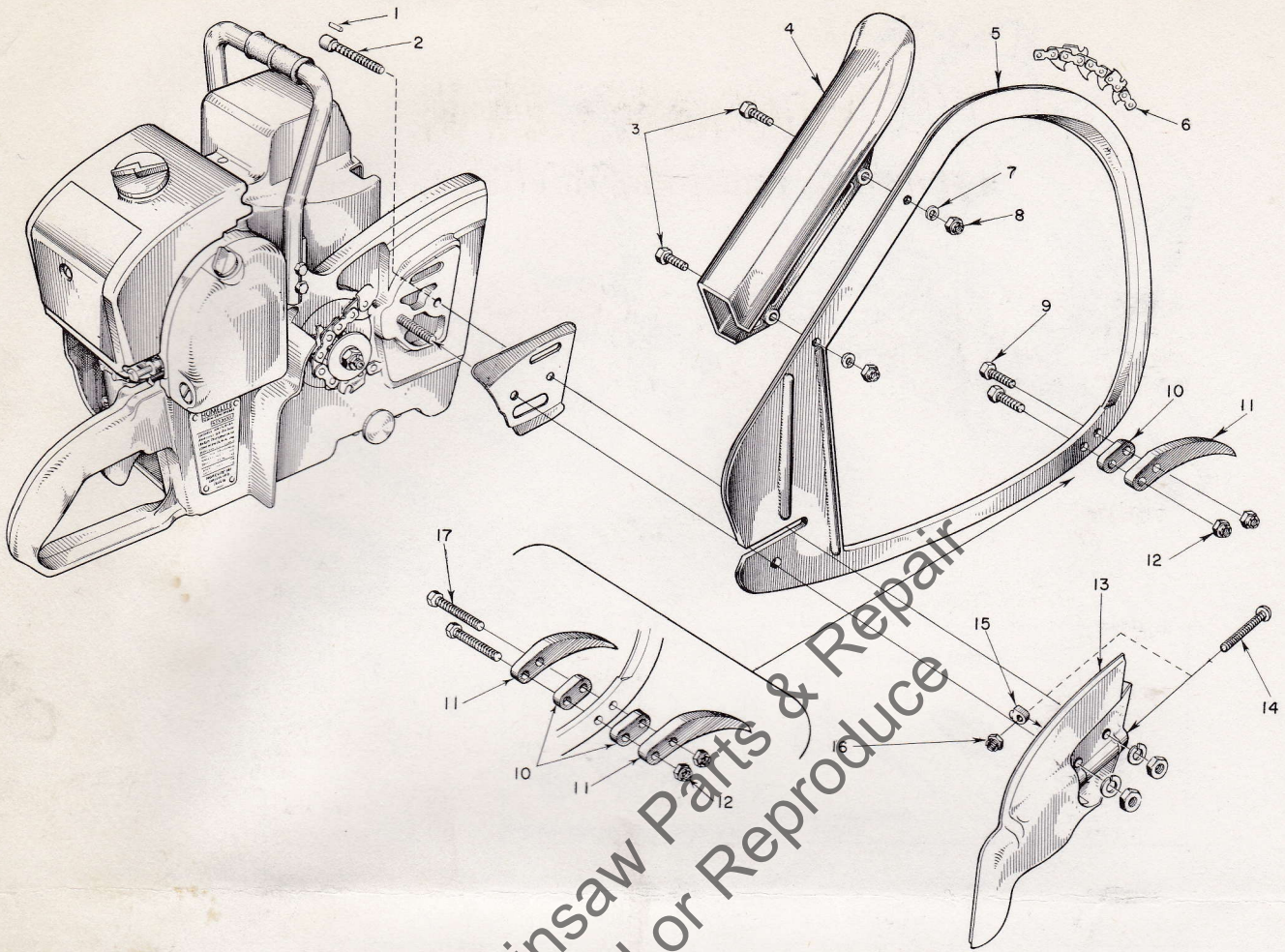


FIGURE 7 — BOW SAW PARTS

Index No.	Part No.	Description	No. Required
1	41738	PIN — spiral, guide bar bolt .....	2
2	57175	BOLT — guide bar .....	2
3	80355	SCREW — 1/4-20 x 1/2 hex hd. ....	2
4	55952	GUARD .....	1
5	A-56485	BOW GUIDE — 16" .....	1
6	** HC-6272-L	BOW CHAIN — Homelite, 7/16" pitch .....	1
7	83009	WASHER — 1/4 lock .....	2
8	81013	NUT — 1/4-20 hex .....	2
9	80546	SCREW — 5/16-24 x 1 1/4 hex hd. ....	2

Index No.	Part No.	Description	No. Required
10	*75929	SPACER .....	
11	*75728	SPUR .....	
12	81112	NUT — 5/16-24 hex .....	2
13	A-55668-1	COVER — drive case .....	1
		Includes	
14	80617	SCREW — 5/16-18 x 2 rd. hd. ....	1
15	55613	PIN — adjusting .....	1
16	81123	NUT — 5/16-18 hex lock .....	1
17	†80606	SCREW — 5/16-24 x 1 3/4 hex hd. ....	2

\*Optional Equipment — 1 or 2 per bow

\*\*A-57363 Sprocket required for HC-6272-L chain

†Use when bow has two spurs and two spacers



# HOMELITE

## Authorized Sales and Service Branches

Homelite sales and service factory branches are located throughout the country. Field representatives and factory-trained servicemen are always available, ready and able to keep your Homelites running in top performance at all times. See the "Yellow Pages", in the telephone directory, for the address and phone number of your nearest Homelite Branch office.

**California**  
Alhambra (Los Angeles area)  
Fresno  
Sacramento  
S. San Francisco

**Colorado**  
Denver

**Connecticut**  
Byram  
Hartford

**Florida**  
Jacksonville  
Miami

**Georgia**  
Atlanta

**Illinois**  
Stone Park (Chicago area)

**Indiana**  
Indianapolis

**Louisiana**  
Bossier City  
Metairie

**Maine**  
Orono

**Maryland**  
Baltimore

**Massachusetts**  
Allston (Boston area)

**Michigan**  
Detroit  
Grand Rapids

**Minnesota**  
St. Paul

**Missouri**  
Kansas City  
St. Louis

**Nebraska**  
Omaha

**New Jersey**  
North Arlington  
Woodbridge

**New York**  
Buffalo  
Latham (Albany area)  
Rochester  
Syracuse

**North Carolina**  
Charlotte  
Raleigh

**Ohio**  
Cincinnati  
Cleveland  
Toledo

**Oklahoma**  
Oklahoma City

**Oregon**  
Portland

**Pennsylvania**  
Altoona  
Erie  
Harrisburg  
Hazleton  
Malvern  
Philadelphia  
Pittsburgh

**Tennessee**  
Knoxville  
Memphis

**Texas**  
Dallas  
Lufkin

**Utah**  
North Salt Lake

**Virginia**  
Alexandria  
Richmond  
Roanoke

**Washington**  
Seattle  
Spokane

**West Virginia**  
Charleston  
Clarksburg

**Wisconsin**  
Milwaukee

**DOMINION OF CANADA**  
**TERRY MACHINERY CO., LTD.**

**Quebec**  
Montreal  
Quebec City

**Alberta**  
Edmonton

**British Columbia**  
Vancouver  
Prince George

**New Brunswick**  
Moncton

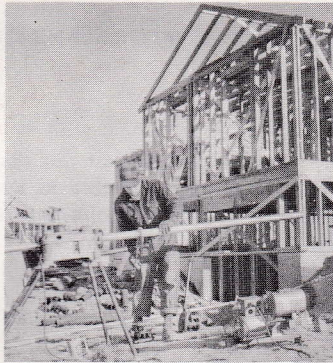
**Ontario**  
Ottawa  
Toronto  
Port Arthur



**You'll  
SPEED WORK  
and make  
MORE MONEY  
with...**



**HOMELITE**  
SELF-PRIMING PUMPS



**HOMELITE**  
DEPENDABLE GENERATORS



**HOMELITE**  
POWERFUL ONE-MAN CHAIN SAWS



**HOMELITE**  
ONE-MAN CONCRETE VIBRATORS



**HOMELITE** — BOSCH (Germany)  
ELECTRIC BUILDER'S HAMMERS

**All Powered By Famous HOMELITE Engines**

Homelite's two-cycle gasoline engines are the most efficient and dependable units of their kind ever built. Their two-cycle design, developed to perfection by Homelite engineers over the past 35 years, gives maximum power for the least weight because power is produced at every piston down stroke. As an added advantage, this design requires fewer moving parts which means greater dependability and lower maintenance