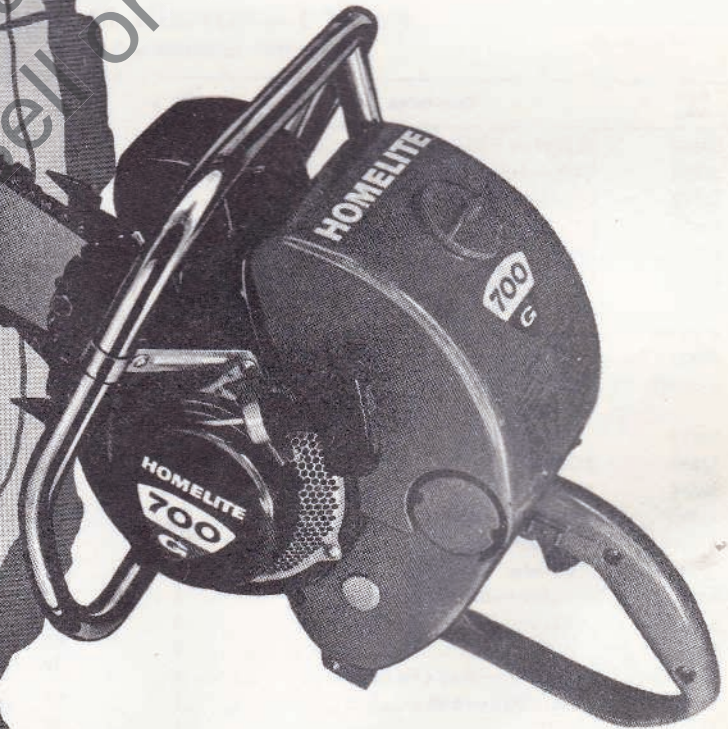


PRICE .25

# HOMELITE

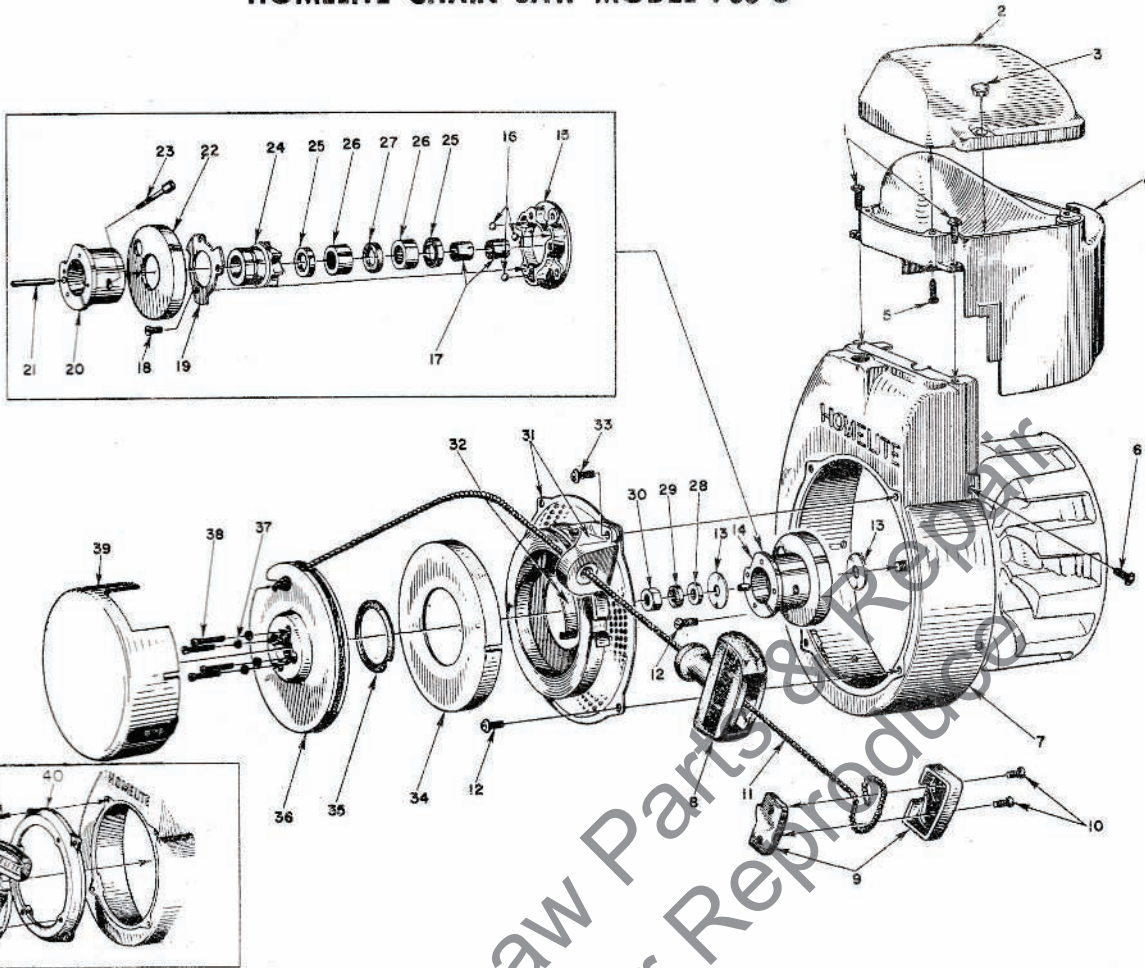
## CHAIN SAW

Do Not Sell or Reproduce  
Parts & Repair



### PARTS LIST

# HOMELITE CHAIN SAW MODEL 700 G



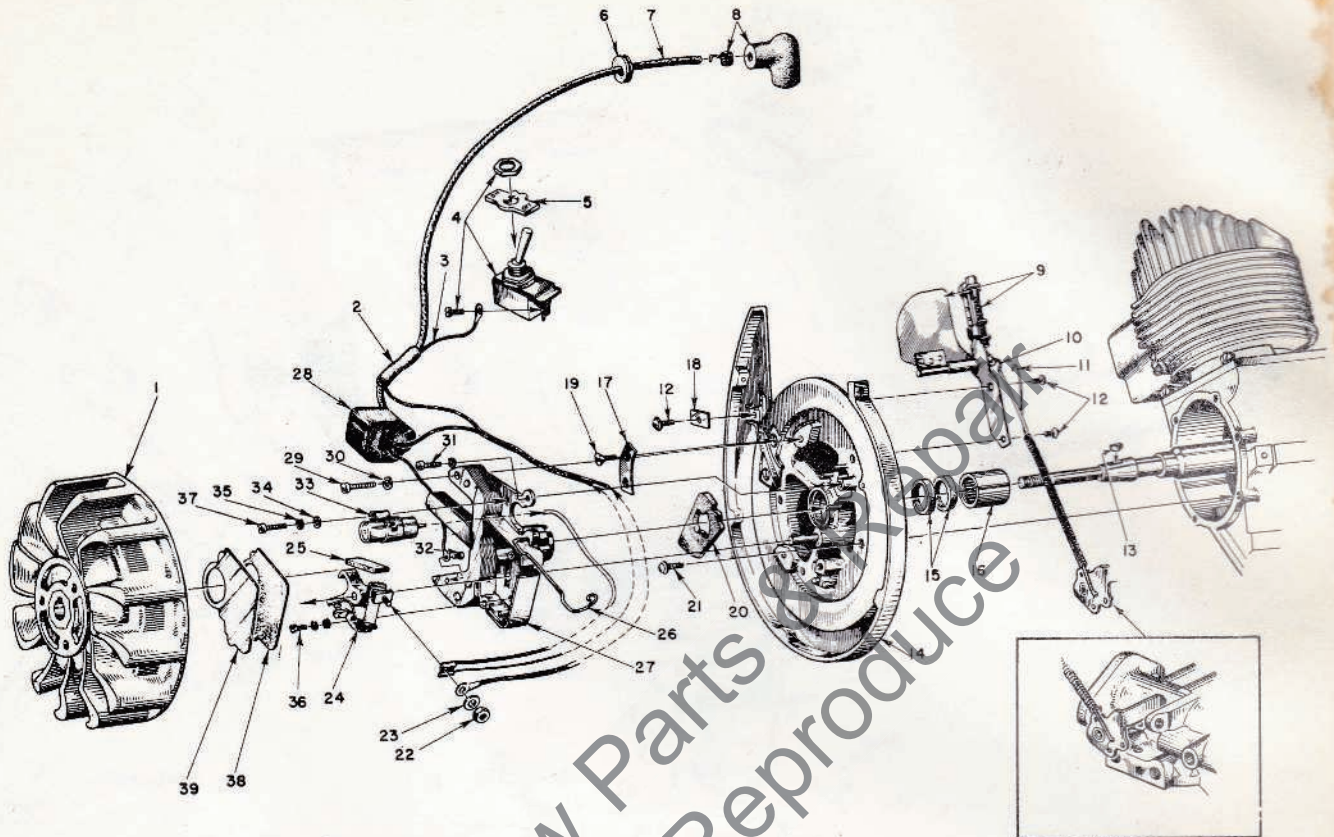
**FIGURE 1 — HOMELITE RECOIL STARTER PARTS**  
FM STARTER ASSEMBLY w/ mounting plate and screws

Index No.	Part No.	Description	No. Required	Index No.	Part No.	Description	No. Required
1	80560	SCREW — 8-32 x 1/2 pan hd.	2			Includes	
2	56968	CAP — cylinder shield	1	24	A-55348	RATCHET — w/washer	1
	23742	DECAL — "Homelite"	1			Includes	
3	32814	PLUG	1		55271	WASHER — formica	1
4	56967-2	SHIELD — cylinder	1	25	55272	SEAL — garlock	2
5	80513	SCREW — self-tapping #6 x 1/2	4	26	55215	BEARING — needle	2
6	80577	SCREW — 8-32 x 3/4 pan hd.	4	27	55214	FELT	1
7	A-56006	SHROUD — air w/inserts	1	28	84070	WASHER — 3/8 flat aluminum	1
8	55937	GRIP — starting	1	29	83018	WASHER — 3/8 lock	1
9	A-56081	INSERT — grip w/cover	1	30	81124	NUT — 3/8-24 hex	1
		Includes		31	A-55998	SCREEN — air	1
10	80619	SCREW	2			Includes	
11	55898	ROPE — nylon	1	*A-55999	BRACKET w/55363-A bushing		1
12	80579	SCREW — 10-32 x 3/8 pan hd.	6	32	56497	SPRING — recoil	1
13	55585	WASHER — thrust	2	33	80572	SCREW — 10-32 x 5/8 pan hd. (through bracket)	1
14	A-56906	BALL DRIVE	1			Includes	
		Includes		34	71603	COVER — spring housing	1
15	55054-A	PLATE — ball drive	1	35	71588	SHIM — plastic	as req'd.
16	55217	BALL — steel	3	36	55362-2	PULLEY	1
17	55584	SLEEVE	2	37	83004	WASHER — #6 lock	4
18	80588	SCREW — 5-40 x 3/8 flat hd.	3	38	80475	SCREW — 6-32 x 3/4 fl. hd.	4
19	55097	RETAINER — ball	1	39	AA-73234-1	COVER — pulley	1
20	A-57100	HUB	1			Includes	
		Includes		40	56531	ADAPTER PLATE	1
21	57065	PIN — spirol	1	41	80576	SCREW — 10-32 x 1/8	4
22	56903	CUP — sealing	1	42	A-56540-6	FM STARTER ASSEMBLY — 700 GFM only	
23	72295-A	SCREW — hub	1			refer to #23649-A Parts list	1
	AA-55213	RATCHET & BEARING	1	43	80681	SCREW — 3/4-20 x 1/2	4

\*Assemble to screen with 85073 rivet.

Always furnish saw model and serial number when ordering parts.

# HOMELITE CHAIN SAW MODEL 700 G



**FIGURE 2 — IGNITION AND GOVERNOR PARTS**

Assemble Governor Arm into this hole in Throttle Stop Lever as indicated.

Index No.	Part No.	Description	No. Required	Index No.	Part No.	Description	No. Required
1	55994-A	ROTOR	1	19	80598	SCREW—6-32 x 1/16 flat hd.	2
2	55290	SLEEVE—insulating	1	20	55989	WASHER—sealing, felt	1
3	55990	LEAD—ground	1	21	80576	SCREW—10-32 x 3/16 pan hd.	6
4	A-57650-2	SWITCH w/screw	1	22	55982	NUT—terminal	1
5	55879	PLATE (on-off)	1	23	55983	WASHER—terminal	1
6	60929	GROMMET	1	24	A-55971	POINTS (set)	1
7	55235-A	LEAD—high tension	1	25	55984	WICK—felt	1
8	A-55373-A	TERMINAL (sparky)	1	26	55980	CLAMP—dust cover	1
9	* A-55996	GOVERNOR	1	27	55969	BOX—breaker w/core	1
		Includes		28	55986-A	COIL (with terminals)	1
	* 84066	WASHER—governor arm burr	1	29	80660	SCREW—10-24 x 7/8 fl. hd.	2
10	* 55943	ARM—governor	1	30	83046	WASHER—#10 lock	3
11	* 56179	SPRING	1	31	80595	SCREW—10-24 x 1/2, fl. hd.	1
12	80575	SCREW—8-32 x 1/4 pan hd.	3	32	55977	SCREW	1
13	75078	KEY—rotor	1	33	55987	CONDENSER (with terminal)	1
14	A-56165-A	BACKPLATE w/pivot post	1	34	84048	WASHER—flat	2
		Includes		35	83060	WASHER—lock	2
15	71597	SEAL—garlock	2	36	55985	SCREW—8-32 x 3/8 fl. hd.	1
16	55204	BEARING—needle	1	37	55988	SCREW	1
17	55962	CLAMP—inner	1	38	55978	GASKET—dust cover	1
18	55161	CLAMP—outer	1	39	55979	COVER—dust	1

\*Governor equipped saws.

### \*SPECIAL TOOLS

Combination Wrench #22808 supplied with saw

AA-22560	MAGNETO ROTOR REMOVER ASSEMBLY	1	23391-1	ASSEMBLY TOOL—needle bearing	1
A-23131	CLUTCH SPIDER PULLER ASSEMBLY	1	23267	ANVIL—sprocket shaft assembly	1
23136	BODY—assembling fixture	1	22828	PLIERS—for Tru-arc ring (piston)	1
23232	SLEEVE (for garlock seal)	1	22726	PLIERS—for Tru-arc ring (sprocket)	1
22820-1	ADAPTER—bearing assembling	1	22126	WRENCH—socket screw (conn. rod)	1
A-23137	JACKSCREW ASSEMBLY	1	23234	NEEDLE BEARING TOOL (conn. rod)	1
22812-1	PLATE—shaft aligning	1	23228	PLUG—bearing assembly	1
23233	GARLOCK SEAL ASSEMBLY	1			

\*When ordered only.

Always furnish saw model and serial number when ordering parts

# HOMELITE CHAIN SAW MODEL 700 G

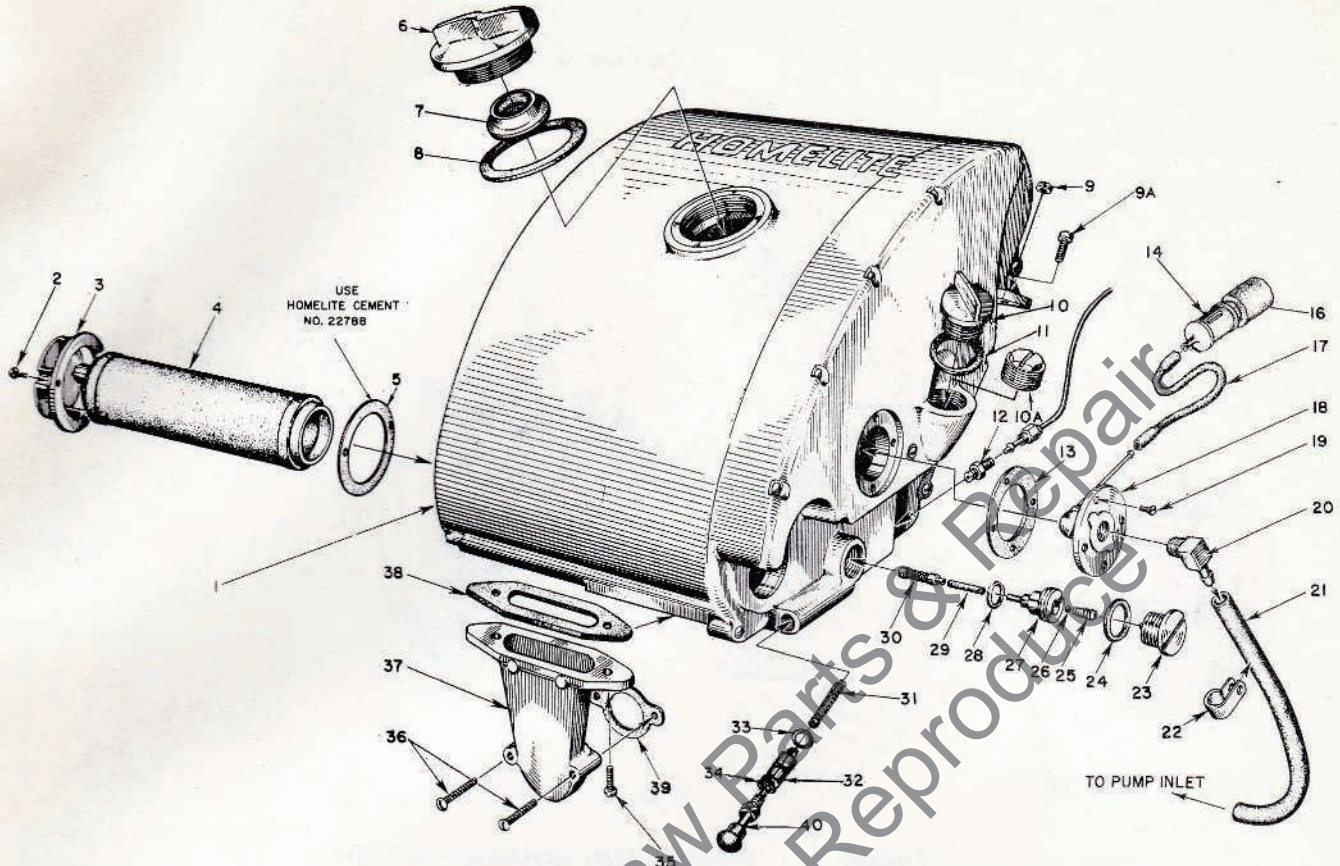


FIGURE 3 — FUEL TANK

Index No.	Part No.	Description	No. Required	Index No.	Part No.	Description	No. Required
1	* A-55830-A	FUEL TANK	1	18	AA-72475	FITTING — fuel outlet	1
2	80630	SCREW — 6-32 x 1/2 pan hd.	2	19	80451	SCREW — 6-32 x 3/8 flat hd.	4
3	55494	CAP — air filter	1	20	* 74917	ELBOW — fuel line connection	1
4	* 57337-A	FILTER — air	1	21	A-56379	LINE — fuel	1
5	57041	GASKET (cemented to tank)	1	22	56014	CLIP — fuel line, nylon	1
6	* A-56907	CAP — fuel	1	23	AA-55167	CAP — oil supply line	1
		Includes		24	55107	GASKET	1
7	56865	VALVE — relief	1	25	*59022	SPRING — check valve	1
8	56335	GASKET	1	26	25527	BALL — check	1
9	* 81114	NUT — 1/4-28 NOTE	1	27	*59450	SEAT — check ball	1
	* 81108	NUT — 1/4-20 NOTE	1	28	55110	GASKET	1
9A	† 80710	SCREW — 12-24 x 3/8 fl. hd.	1	29	*59000	SLEEVE — flexible	1
10	* A-56580	CAP — oil filler (3/4-16)	1	30	* A-59449	PICK-UP — oil	1
		Includes		31	* 59293	SPRING — plunger	1
11	56607	GASKET	1	32	* A-57834-10	PLUNGER — oil	1
10A	† 55140-A	CAP — oil filler (1/2-14)	1			Includes	
12	* A-59456-A	VALVE — check	1	33	74388	"O" Ring	1
13	72174	GASKET	1	34	59074	"O" Ring	1
11	AA-55191	LINE — oil	1	35	80572	SCREW — 10-32 x 5/8 pan hd.	2
14	* A-59451	FILTER — fuel	1	36	80624	SCREW — 10-32 x 1 pan hd.	2
		Includes		37	55019-3	ADAPTER — air filter	1
16	59453	FILTER — felt	1	38	55059	GASKET — adapter	1
17	55805	SLEEVE — flexible	1	39	72971-2	GASKET — air elbow	1
				40	* 57289-1	BUTTON — plunger	1

\* Service replacement part.

† Original part.

NOTE: Mate with STUD — fig. 5, index no. 11.

# HOMELITE CHAIN SAW MODEL 700 G

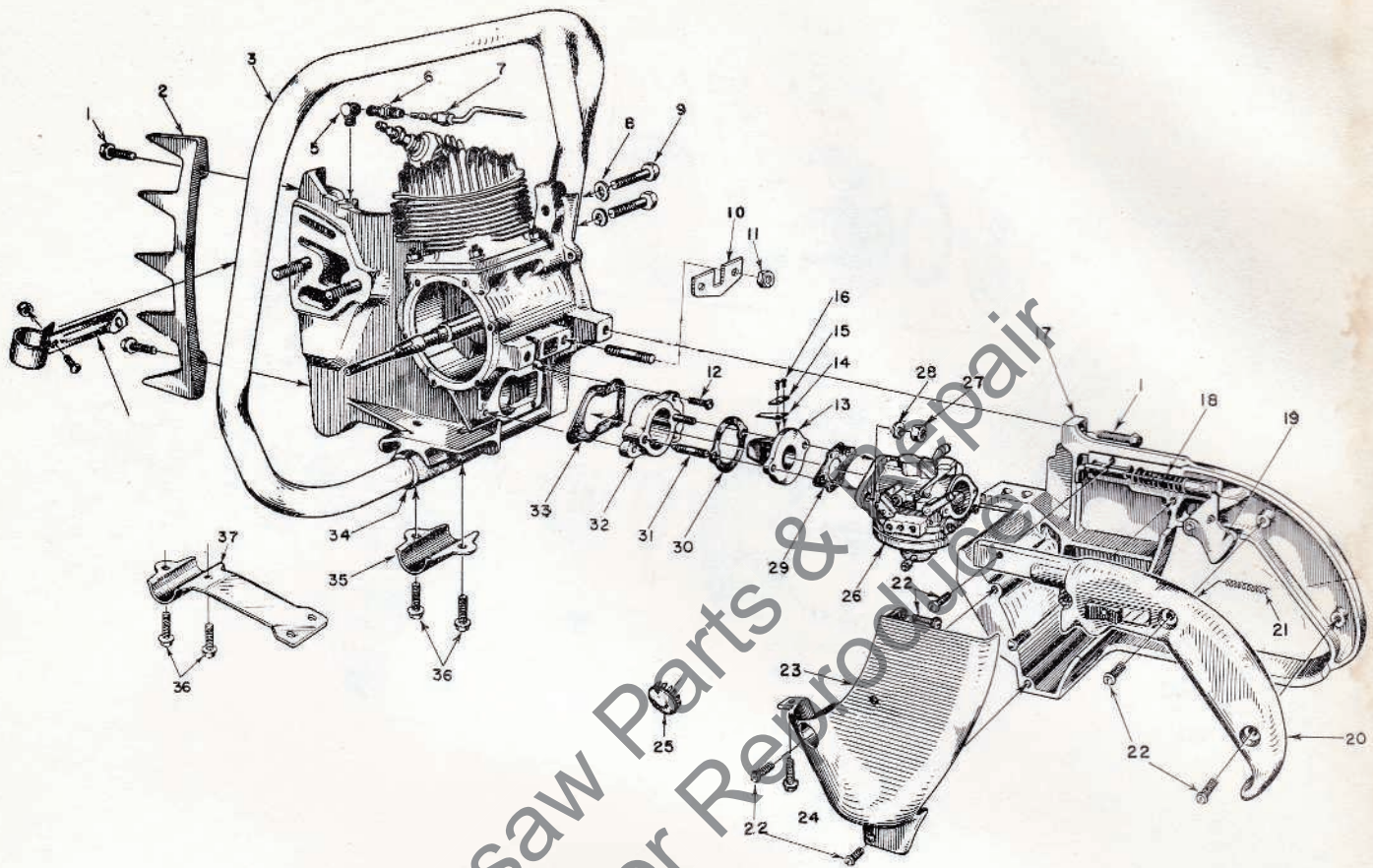


FIGURE 4 — HANDLE, GRIP AND REED VALVE PARTS

Index No.	Part No.	Description	No. Required
1	80573	SCREW — 1/4-20 x 1 1/8 hex hd.	5
2	55103	PLATE — bumper	1
3	A-57057	HANDLE — wrap-around (w/80308 screw)	1
	A-57053	HANDLE — flush-cut	1
4	A-55740	BRACE (included w/handles)	1
		Includes	
	80578	SCREW — 10-32 x 7/16 pan hd.	1
	81109	NUT — 10-32 lock	1
5	31734	ELBOW — connector	1
6	31733-1	ADAPTER — straight	1
7	AA-55191	LINE — chain oil	1
8	83003	WASHER — 3/16 lock	2
9	80087	SCREW — 3/16-18 x 1 1/2 hex hd.	2
10	59347	STRAP — fuel tank	2
11	81130	NUT — 1/4-28 flex-lock	2
12	80583	SCREW — 10-32 x 3/4 pan hd.	3
13	55932	ADAPTER — reed valve	1
14	55941-1	REED	4
15	55942	PLATE — reed	4
16	80658	SCREW — 4-40 x 3/16 pan hd.	8
17	AA-55281	HANDLE — throttle w/pin and 55372 felt	1
18	A-55954	ROD — throttle	1
		Includes	
	55045-A	SPRING	1
19	AA-55207	TRIGGER — throttle	1

Index No.	Part No.	Description	No. Required
20	AA-55228	COVER — pistol grip	1
		Includes	
	AA-55282	LOCK — throttle	1
		Includes	
21	72970	SPRING — lock	1
22	80560	SCREW — 8-32 x 1/2 pan hd.	as req'd.
23	*55104-3A	SHIELD — carburetor	1
24	80582	SCREW — 8-32 x 5/8 pan hd.	as req'd.
25	†29187	PLUG — button	1
26	*A-57440	CARBURETOR — Til. HL-104A	1
	58191	REPAIR PARTS KIT	1
	55836	GASKET SET — part of 58191	1
27	81013-1	NUT — 1/4-20 hex	2
28	83009	WASHER — 1/4 lock	2
29	55553-3	GASKET — carburetor	1
30	55946	GASKET — spacer-adaptor	1
31	55945	STUD	2
32	55933	SPACER — reed adaptor	1
33	55116	GASKET	1
34	55146	CUSHION — handle	1
35	55145	CLAMP — handle	1
36	80581	SCREW — 1/4-20 x 3/8 hex hd.	as req'd.
37	‡58549-A	BRACE — handle (4 holes)	1
	‡58549	" " (3 holes)	1

\* Service replacement part.

† Original part.

‡ Accessory

Always furnish saw model and serial number when ordering parts

# HOMELITE CHAIN SAW MODEL 700 G

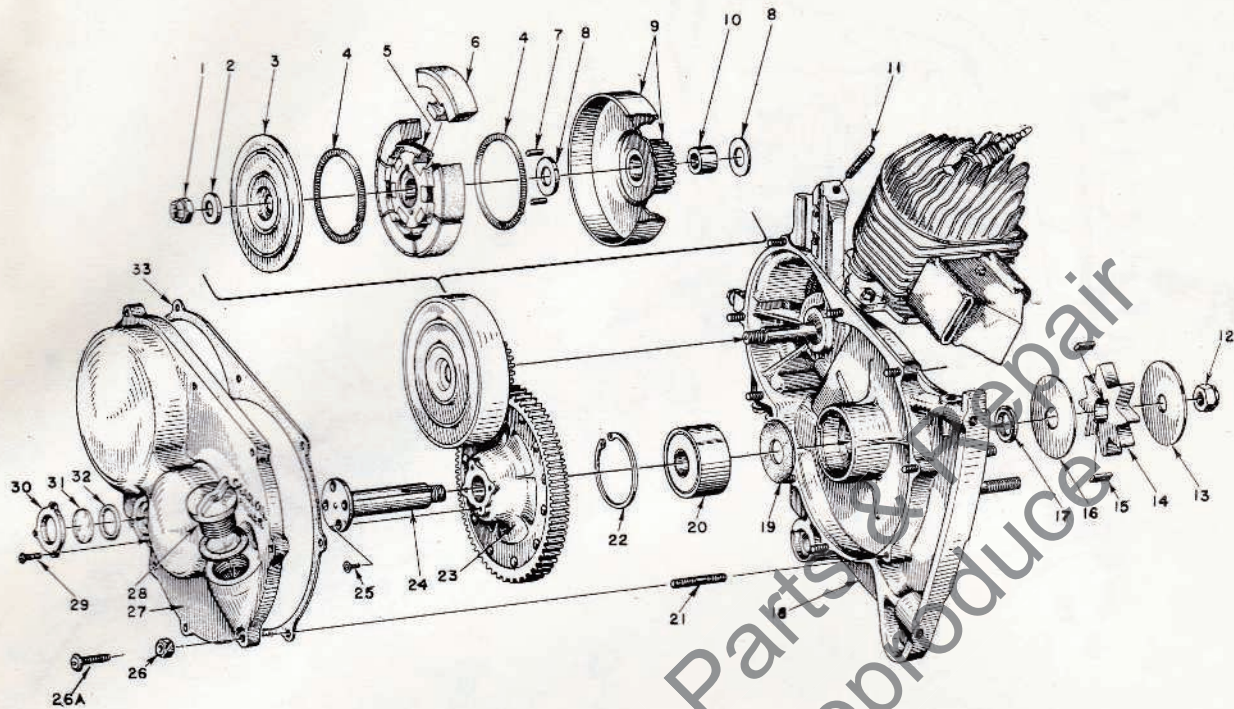


FIGURE 5 — GEAR CASE AND SPROCKET PARTS

2.84:1 Gear Ratio

Index No.	Part No.	Description	No. Required
1	81192	NUT — 3/4-24 flex-lock	1
2	55036	WASHER — clutch	1
3	55126-A	COVER — clutch	1
4	55123-C	SPRING	2
5	55075-3A	SPIDER	1
6	A-55692-A	SHOE	6
7	55225-1A	KEY — clutch	2
8	56132	WASHER — thrust	2
9	†A-56515	CLUTCH DRUM (and drive gear) — 25 teeth	1
10	56133	BEARING — drive gear	1
11	*55871	STUD — fuel tank (1/4-28). SEE NOTE	1
	*57349	STUD (1/4-20) SEE NOTE	1
12	81101	NUT — 1/2-20 flex-lock	1
13	56077	WASHER — sprocket (outer)	1
14	55593-2	SPROCKET — 8 tooth, 1/2" pitch	1
	74481-1	SPROCKET — 7 tooth, 3/8" pitch	1
15	56076-1A	KEY — sprocket	2
16	56074	WASHER — sprocket (inner)	1
17	56071	SPACER — sprocket	1
18	*A-57743-B	CRANKCASE— see fig. #6, index #11	1

†For 3.57:1 ratio, order A-56849 — 21 teeth  
 For 2:1 ratio, order A-56158 — 32 teeth

Index No.	Part No.	Description	No. Required
19	56072	SEAL — formica	1
20	56219-S	BEARING — ball	1
21	*57350	STUD — crankcase to cover	9
22	28922	RING — retaining	1
23	†A-56516	DRIVEN GEAR — 71 teeth	1
24	56070	SHAFT — sprocket	1
25	80651	SCREW — 12-28 x 3/8 flat hd., socket	4
26	*81109	NUT — 10-32, flex-lock	9
26 A	√80572	SCREW — 10-32 x 3/8 pan hd.	9
27	*AA-55226-C	COVER — gear case	1
		Includes	
28	A-56580	CAP — oil filler	1
		Includes	
	56607	GASKET — filler cap	1
29	80548	SCREW — binder hd., self tapping	3
30	55098	PLATE — window	1
31	55099	WINDOW — plastic	1
32	55100	GASKET — "O" ring	1
33	55053-A	GASKET — gear case cover	1

†For 3.57:1 ratio, order AA-56824 — 75 teeth  
 For 2:1 ratio, order A-56154 — 64 teeth

\* Service replacement part.  
 √ Original part.

NOTE: Mate with NUT — fig. 3, index no. 9.

# HOMELITE CHAIN SAW MODEL 700 G

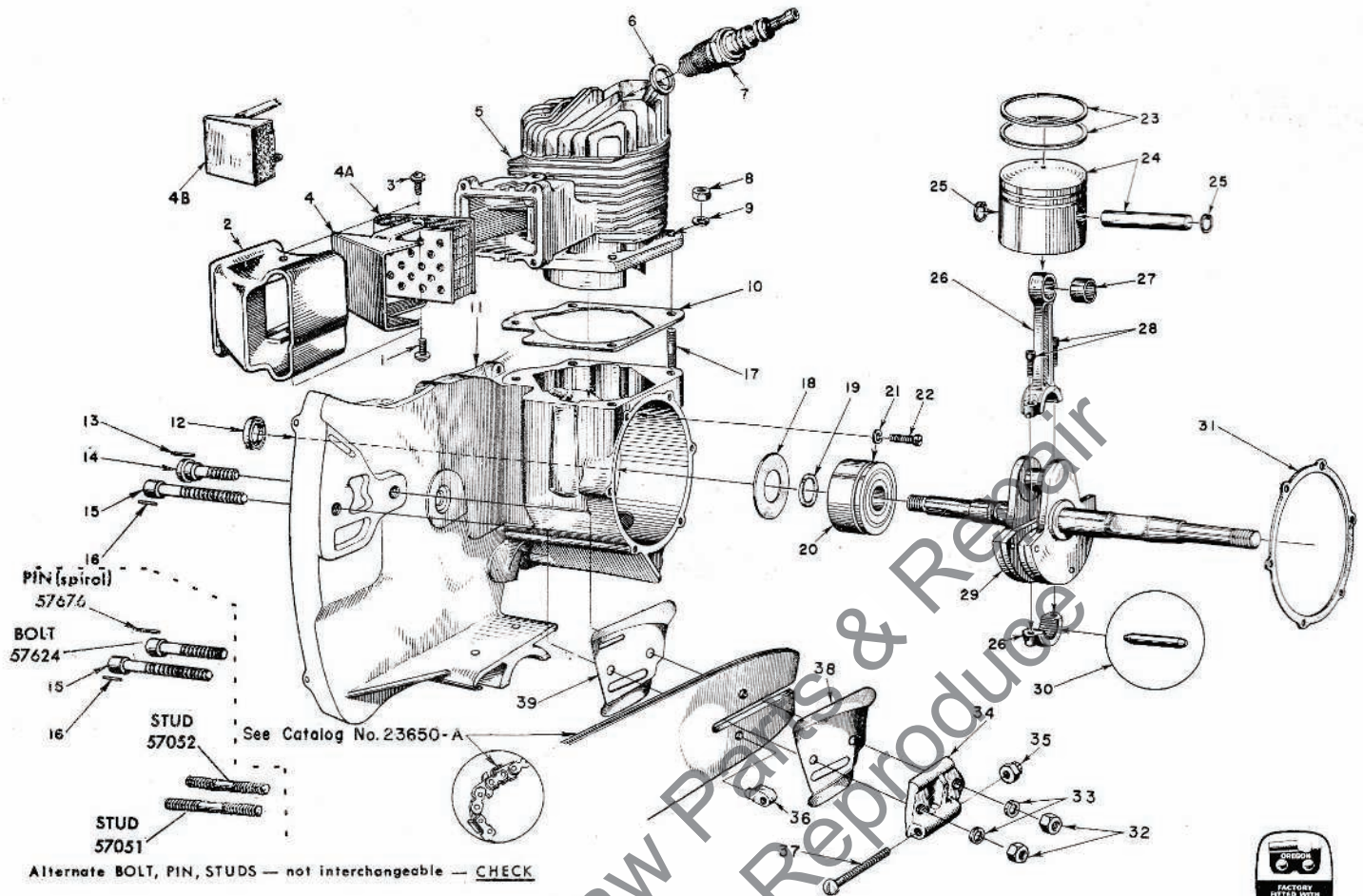


FIGURE 6 — ENGINE ASSEMBLY

Index No.	Part No.	Description	No. Required	Index No.	Part No.	Description	No. Required
1	80576	SCREW—10-32 x 3/4 pan hd.	1	20	56097-S	BEARING—main	1
2	55506-A	DAMPER	1	21	83061	WASHER—lock, special thin	2
3	80583	SCREW—10-32 x 3/4 pan hd.	1	22	19238-A	SCREW—main bearing retaining	2
4	56396	CAP—plain	1	23	56291	RING—piston	2
		and		24	A-57070	PISTON and PIN	1
4A	A-56068-A	ELEMENT—wire screen	1			Includes	
4B	A-56613-A	CAP and ELEMENT	1	25	55095	RING—piston pin retaining	2
5	56834	CYLINDER	1	26	* A-55195-B	CONNECTING ROD	1
	56834-1	CYLINDER—bow guide	1			Includes	
6	25038	GASKET (included with spark plug)	1	27	59351	BEARING—piston pin	1
7	71530-S	SPARK PLUG—Champion HO-8A	1	28	80805	SCREW—8-32 x 3/8, allen	2
8	81063-2	NUT—1/4-28 hex	4	29	* A-57473	CRANKSHAFT—Ball Drive STARTER	1
9	83009	WASHER—1/4 lock	4		* A-57474	CRANKSHAFT—FM STARTER	1
10	56864	GASKET—cylinder	1	30	AA-72206	ROLLERS (set of 31 needles)	1
11	* A-57743-B	CRANKCASE	1	31	55049	GASKET—back plate	1
		Includes		32	81089	NUT—3/8-16 hex	2
12	56134	SEAL—garlock	1	33	83018	WASHER—3/8 lock	2
13	58154	PIN—dowel guide bar bolt (SEE NOTE)	1		A-55591	ADJUSTING PLATE	1
14	58020-A	BOLT—guide bar (short) (SEE NOTE)	1			Includes	
15	57625	BOLT—guide bar (long)	1	34	55551-B	PLATE—adjusting	1
16	41738	PIN—spiral, guide bar bolt	1	35	81123	NUT—flex-lock	1
17	55871	STUD—cylinder, fuel tank	7	36	55552	PIN—guide bar adjusting	1
	57350	STUD—cover (see fig. #5, index #21)	9	37	80617	SCREW—3/16-18 x 2 rd. hd.	1
18	55048-A	GASKET—crankcase sealing	1	38	56957-A	PLATE—guide bar (outer)	1
19	56109	RING—bearing retaining	1	39	56956	PLATE—guide bar (inner)	1

NOTE: PART NO. 58020-A, GUIDE BAR BOLT (serrated shoulder), REPLACES Index No. 11 AND Index No. 12.

\* Service replacement part.

Always furnish saw model and serial number when ordering parts

**You'll  
SPEED WORK  
and make  
MORE MONEY  
with...**

# HOMELITE

**SELF-PRIMING PUMPS**



**DEPENDABLE GENERATORS**



**POWERFUL ONE-MAN CHAIN SAWS**



**ONE-MAN CONCRETE VIBRATORS**



**ELECTRIC BUILDER'S HAMMERS**



1165

Printed in United States of America

Part No. 23459

## HOMELITE

A **textron** DIVISION

PORT CHESTER, N. Y.