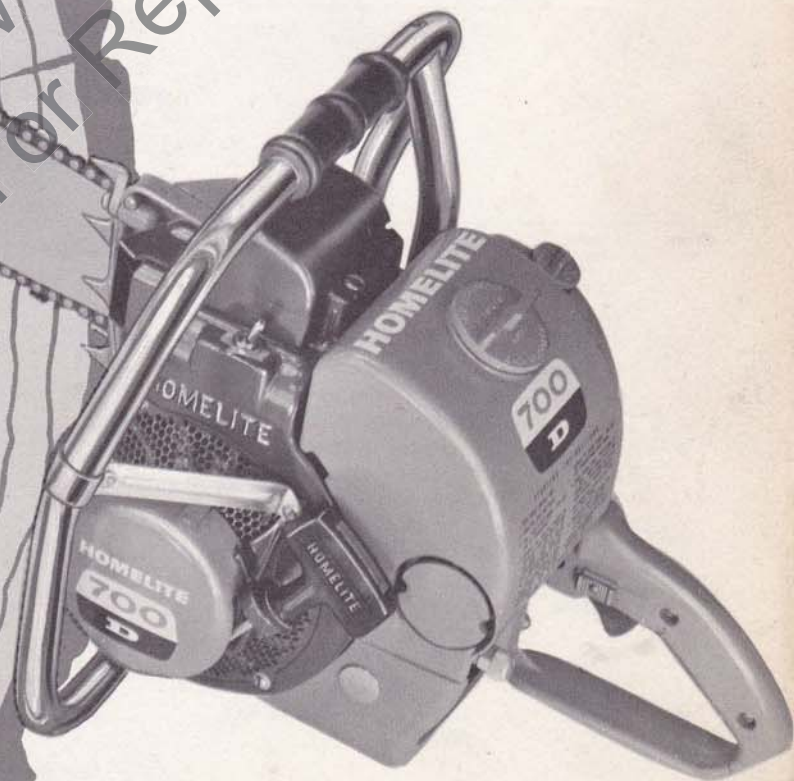


April 1960

# HOMELITE CHAIN SAW

**700  
D**



**PARTS LIST**

Len's Chainsaw Parts & Repair  
Not Sell or Reproduce

# HOMELITE CHAIN SAW MODEL 700 D

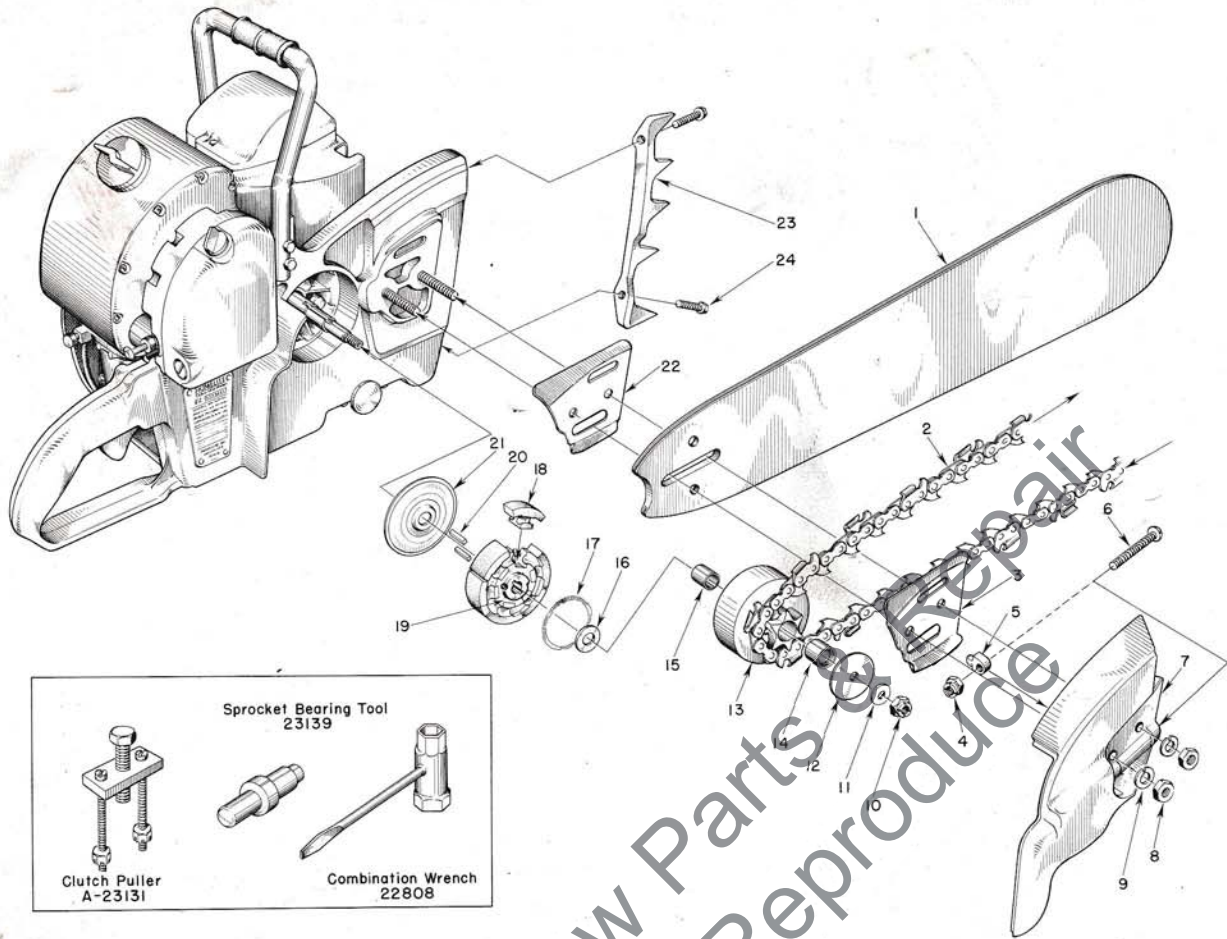


FIGURE 1 — SAW PARTS

APRIL 1960

Index No.	Part No.	Description	No. Required	Index No.	Part No.	Description	No. Required
1	A-51545	12" BAR — extra hard tip — hard track.....	1	8	81089	NUT — 3/8-16 hex.....	2
	A-51517	17" BAR — extra hard tip — hard track.....	1	9	83018	WASHER — lock.....	2
	A-51521	21" BAR — extra hard tip — hard track.....	1	10	81116	NUT — 3/8-24 flex-lock.....	1
	A-51525	25" BAR — extra hard tip — hard track.....	1	11	84010	WASHER — 3/8 flat.....	1
	A-51539	30" BAR — extra hard tip — hard track.....	1	12	55163-1	WASHER — thrust.....	1
		OREGON #62C 7/16 PITCH — CHIPPER CHAIN		13	A-56377	SPROCKET and DRUM (for 7/16 pitch chain)...	1
2	A-51542	12" CHAIN — (with kit).....	1		A-56019	SPROCKET and DRUM (for 1/2 pitch chain)...	1
	A-51535	17" CHAIN — (with kit).....	1	14	55664-S	BEARING — needle (included in drum).....	1
	A-51536	21" CHAIN — (with kit).....	1	15	55661	RACE — inner.....	1
	A-51537	25" CHAIN — (with kit).....	1	16	55660-1	WASHER — thrust.....	1
	A-51540	30" CHAIN — (with kit).....	1	17	55123-A	SPRING — clutch.....	2
3	56872	PLATE — guide bar, outer.....	1	18	55076-1	SHOE — clutch.....	6
	A-55668	COVER — drive case.....	1	19	55075-3	SPIDER — clutch.....	1
		Includes		20	55225-1	KEY.....	2
4	81123	NUT — hex lock.....	1	21	56101-A	COVER — clutch.....	1
5	55613	PIN — guide bar adjusting.....	1	22	56871	PLATE — guide bar, inner.....	1
6	80617	SCREW — 5/16-18 x 2 rd. hd.....	1	23	55632	PLATE — spiked bumper.....	1
7	*	COVER.....	1	24	80573	SCREW — 1/4-20 x 1 3/16 hex. hd.....	2

\*Not Sold Separately

# HOMELITE CHAIN SAW MODEL 700 D

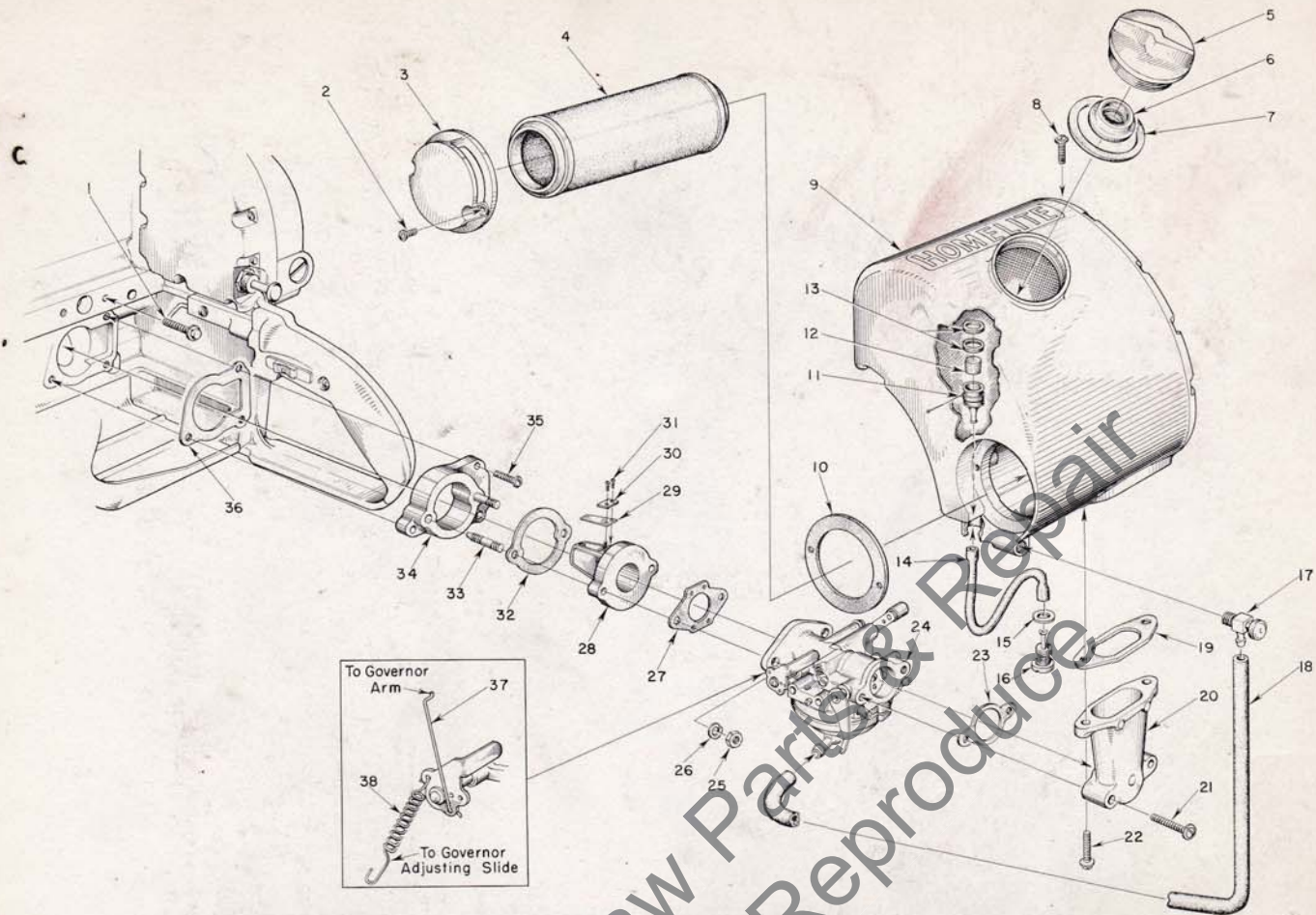


FIGURE 2 — FUEL SYSTEM

APRIL 1960

Index No.	Part No.	Description	No. Required	Index No.	Part No.	Description	No. Required
1	80581	SCREW — 1/4-20 x 3/8 hex hd.	2	18	55680	FUEL LINE	1
2	80630	SCREW — 6-32 x 1/2 pan hd.	2	19	55059	GASKET — adapter	1
3	55494	CAP — air filter	1	20	55019-3	ADAPTER — air cleaner	1
4	56876	AIR FILTER	1	21	80624	SCREW — 10-32 x 1 pan hd.	2
5	A-56908	CAP — fuel	1	22	80572	SCREW — 10-32 x 3/8 pan hd.	2
6	56865	Includes VALVE — relief	1	23	72971-1	GASKET — air elbow	1
7	72173	GASKET	1	24	*	CARBURETOR	1
8	80572	SCREW — 10-32 x 3/8 pan hd.	1	25	81013	NUT — 1/4-20 hex	2
9	A-55671	FUEL TANK	1	26	83009	WASHER — lock	2
10	57041	GASKET (cemented to tank)	1	27	55553	GASKET — carburetor	1
	56400	DECAL — "Homelite" (for fuel tank)	1	28	55932	ADAPTER — reed valve	1
	55968-A	DECAL — "Instructions" (for fuel tank)	1	29	55941	REED	4
	57013	DECAL — "700 D" (for fuel tank)	1	30	55942	PLATE — reed	4
11	A-56200	STRAINER — outlet, w/brass nail	1	31	80658	SCREW — 4-40 x 3/8 pan hd.	8
		Includes		32	55946	GASKET — adapter-spacer	1
12	74374	FILTER — felt	1	33	55945	STUD	2
13	56196	BUMPER — rubber	2	34	55934	SPACER — reed adapter	1
14	55805	SLEEVE — flexible	1	35	80583	SCREW — 10-32 x 3/4 pan hd.	3
15	55676	GASKET — outlet fitting	1	36	55116	GASKET — reed valve adapter	1
16	55572-A	FITTING — outlet	1	37	†55642	ROD — governor	1
17	55677	VALVE — shut-off	1	38	‡55529	SPRING	1

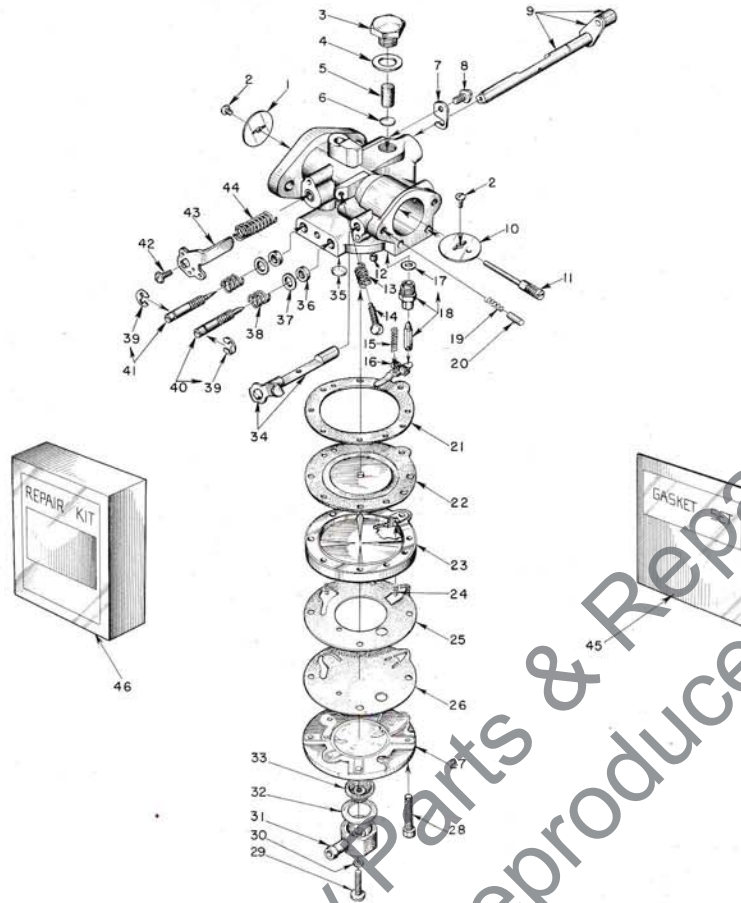
\*For Brown Carburetor, See Figure 3; For Tillotson Carburetor, See Figure 4.

†Assemble governor rod through bottom rear hole on Model 700 D.

‡Hook governor spring through forward hole of stop lever.

Always furnish saw model and serial number when ordering parts.

# HOMELITE CHAIN SAW MODEL 700 D



**FIGURE 3 — BROWN CARBURETOR**

APRIL 1960

Index No.	Part No.	Description	No. Required	Index No.	Part No.	Description	No. Required
	A-56505-A	CARBURETOR — Brown	1	23	77371-A	COVER — main diaphragm.....	1
		Includes		24	77405	SPRING — flapper valve tension.....	2
1	74980	SHUTTER — throttle	1	25	*77305	GASKET — pump body.....	1
2	77044	SCREW — shutter, 4-40 x 1/8 rd. hd.	2	26	*77304	DIAPHRAGM — pump.....	1
3	*77306	SCREW — plug	1	27	A-77374	BODY — fuel pump.....	1
4	*77307	GASKET — plug screw	1	28	77160	SCREW — body, 6-32 x 3/4 fl. hd.....	4
5	*77308	FILTER — felt	1	29	77320	SCREW — fuel connection.....	1
6	*77317	SCREEN — filter	1	30	*74997	GASKET — fibre.....	1
7	*74981	CLIP — throttle shaft	1	31	77318	TURRET — fuel inlet connection.....	1
8	*77041	SCREW — throttle clip, 6-32 x 3/16 pan hd.	1	32	*77319	GASKET — inlet connection.....	1
9	A-77253	SHAFT — throttle	1	33	77376	SCREEN — fuel inlet.....	1
10	74991	SHUTTER — choke	1	34	A-77322	SHAFT & LEVER — choke.....	1
11	*A-77326	PIN — fulcrum.....	1	35	*74977	PLUG — Welch (large).....	1
12	*77381	CUP — restriction (main channel).....	1	36	*77007	RING — square.....	2
13	77010	SPRING — idle speed screw.....	1	37	*77006	WASHER — adjustment packing.....	2
14	77040	SCREW — throttle clip, 6-32 x 1/16 rd. hd....	1	38	*77005	SPRING — adjustment compression.....	2
15	*77015	SPRING — diaphragm lever tension.....	1	39	77004	CLIP — spring retaining.....	2
16	*77016	LEVER — diaphragm.....	1	40	*A-77328	SCREW — main adjusting, w/77004 clip..	1
17	*77346	GASKET — copper.....	1	41	*A-77251	SCREW — idle adjusting, w/77004 clip....	1
18	*A-77327	NEEDLE & SEAT — inlet w/gasket.....	1	42	*77042	SCREW — idle stop.....	1
19	77017	SPRING — choke friction.....	1	43	77247	LEVER — throttle stop.....	1
20	77018	PIN — choke friction.....	1	44	*77313	SPRING — throttle friction.....	1
21	*77368	GASKET — main diaphragm.....	1	45	*77336	GASKET SET (BGS-152).....	1
22	*A-77370	DIAPHRAGM — main.....	1	46	77337	REPAIR PARTS KIT (BRK-155).....	1

\*Included in Repair Parts Kit

# HOMELITE CHAIN SAW MODEL 700 D

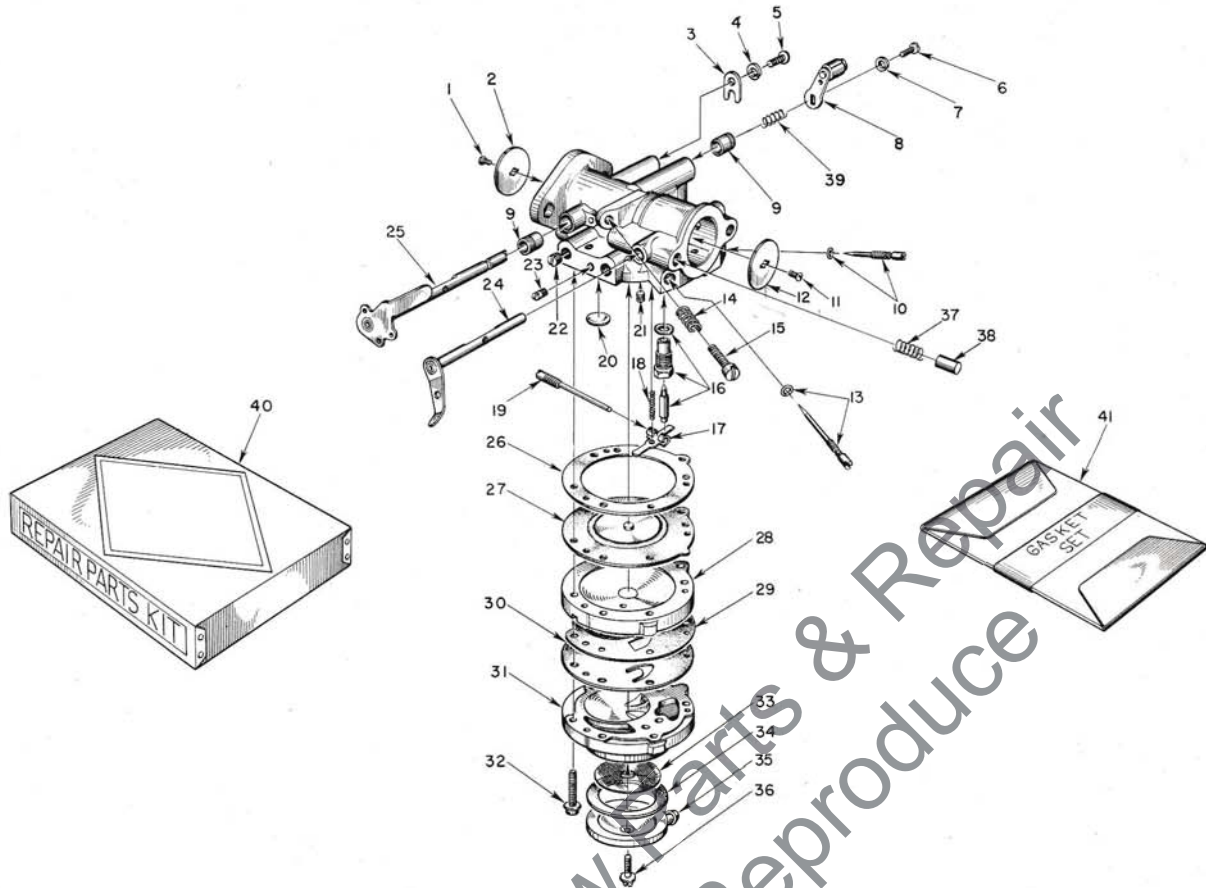


FIGURE 4 — TILLOTSON CARBURETOR

APRIL 1960

Index No.	Part No.	Description	No. Required	Index No.	Part No.	Description	No. Required
	A-56066	CARBURETOR — Tillotson.....	1	17	*55747	LEVER — inlet control.....	1
		Includes		18	*55759	SPRING — control lever.....	1
1	*80012	SCREW — throttle shutter.....	1	19	*A-55762	SCREW — pinion.....	1
2	73272	SHUTTER — throttle.....	1	20	30818	PLUG.....	1
3	73086	CLIP — throttle shaft.....	1	21	55763	PLUG — main nozzle channel.....	1
4	83000	WASHER — lock #8.....	1	22	71505	PLUG.....	2
5	73088	SCREW — 8-32 x 5/16 flat hd.....	1	23	73067	PLUG — drain.....	1
6	*71521	SCREW — 4-36 x 1/4 rd. hd.....	1	24	A-55766	LEVER — choke.....	1
7	*83008	WASHER — lock #4.....	1	25	A-75624	SHAFT — throttle, w/stop lever.....	1
8	A-75528	LEVER and ROLLER — throttle.....	1	26	55754	GASKET — main diaphragm.....	1
9	72812	BUSHING — throttle shaft.....	2	27	*A-55760	DIAPHRAGM — main.....	1
10	*A-75527	SCREW — main adjust. (hi speed).....	1	28	55749	COVER — main diaphragm.....	1
		Includes		29	55881	GASKET — pump diaphragm.....	1
	55764	“O” — ring.....	1	30	*55753	DIAPHRAGM — pump.....	1
11	*80012	SCREW — choke shutter (same as No. 1).....	1	31	55748	BODY — pump.....	1
12	73263	SHUTTER — choke.....	1	32	*55316	SCREW and WASHER.....	6
13	*A-75530	SCREW — idle adjust. (lo speed).....	1	33	55752	SCREEN — fuel strainer.....	1
		Includes		34	55751	GASKET — pump cover.....	1
	55764	“O” — ring.....	1	35	55750	COVER — pump.....	1
14	*28064	SPRING — idle stop screw.....	1	36	55756	SCREW — retaining.....	1
15	*71509	SCREW — idle stop (speed control).....	1	37	73264	SPRING — choke friction pin.....	1
16	*A-55761	INLET NEEDLE and SEAT.....	1	38	71494	PIN — choke friction.....	1
		Includes		39	56175	SPRING — throttle friction.....	1
	55344	GASKET — inlet seat.....	1	40	75623	REPAIR PARTS KIT (RK-357).....	1
				41	*55836	GASKET SET (GS-122).....	1

\*Included in Repair Parts Kit (RK-357)

# HOMELITE CHAIN SAW MODEL 700 D

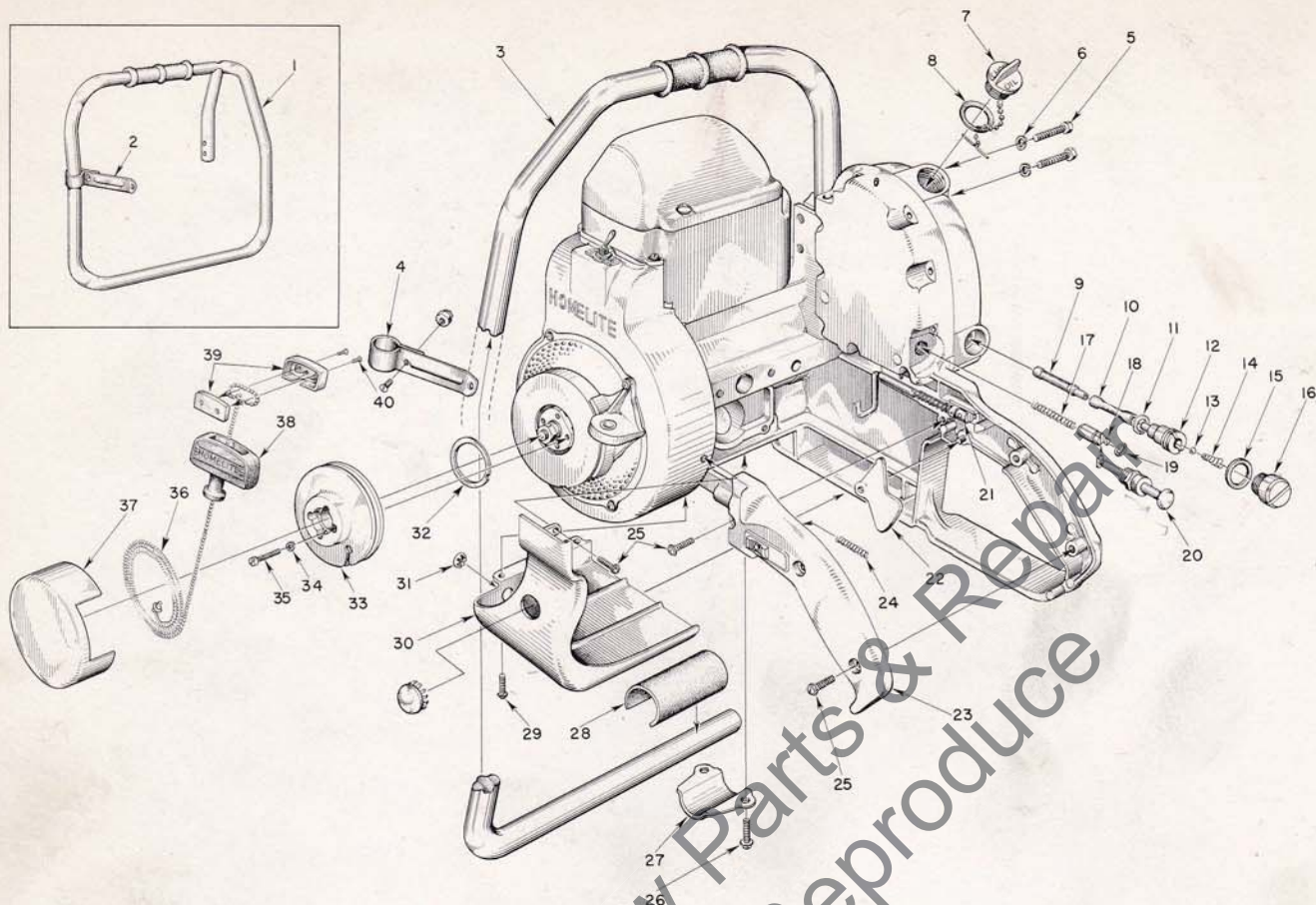


FIGURE 5 — STARTER, HANDLE, GRIP AND LUBRICATOR PARTS

APRIL 1960

Index No.	Part No.	Description	No. Required	Index No.	Part No.	Description	No. Required
1	A-57043	HANDLE — wrap-around (700 DA)	1	20	71764	BUTTON — plunger	1
		Includes		21	A-56630	ROD — throttle	1
	80308	SCREW — 5/16-18 x 1 socket hd.				Includes	
2	A-56217	BRACE			55045-A	SPRING — throttle rod	1
		Includes		22	AA-55207	TRIGGER — throttle	1
	*80578	SCREW — 10-32 x 7/16 pan hd.	1	23	A-55631	COVER — grip	1
	*81109	NUT — 10-32 flex lock	1			Includes	
3	A-57037	HANDLE — flush cut (700 D)	1		AA-55282	LOCK — throttle	1
		Includes				Includes	
4	A-56216	BRACE	1	24	72970	SPRING — throttle lock	1
		Includes		25	80560	SCREW — 8-32 x 1/2 pan hd.	4
	*80578	SCREW — 10-32 x 7/16 pan hd.	1	26	80581	SCREW — 1/4-20 x 5/8 hex hd.	2
	*81109	NUT — 10-32 flex lock	1	27	55614	CLAMP — handle bar	1
5	80087	SCREW — 5/16-18 x 1 1/2 hex hd.	2	28	55685	CUSHION — rubber	1
6	83003	WASHER — 5/16 lock	2	29	80625	SCREW — 10-32 x 1/2 pan hd.	2
7	AA-71655-1	CAP — oil	1	30	55512-1	SHIELD — carburetor	1
		Includes			29187	PLUG — button	1
8	72280	GASKET	1	31	55681	PLUG — button	1
9	AA-55259-A	FINDER — oil	1	32	71588	SHIM — plastic	As req'd.
10	55133-A	SLEEVE — flexible oil	1	33	55597-2	PULLEY	1
11	55110	GASKET	1	34	83004	WASHER — lock #6	4
12	55109-A	FITTING — check valve	1	35	80475	SCREW — 6-32 x 3/4 fil. hd.	4
13	25527	BALL (3/32 dia.)	1	36	55898	ROPE — starting	1
14	55288-A	SPRING	1	37	AA-73234-4	COVER — starting pulley	1
15	55107	GASKET	1		57014	DECAL — "Homelite 700 D" (pulley cover)	1
16	A-55628	CAP — supply line	1	38	55937	GRIP — starting	1
17	71762	SPRING	1	39	A-56081	INSERT — grip (w/screws)	1
18	A-74406	TUBE — plunger	1			Includes	
19	74388	"O" ring	1	40	80619	SCREW	2

\*Supplied with A-56216 or A-56217 brace.

# HOMELITE CHAIN SAW MODEL 700 D

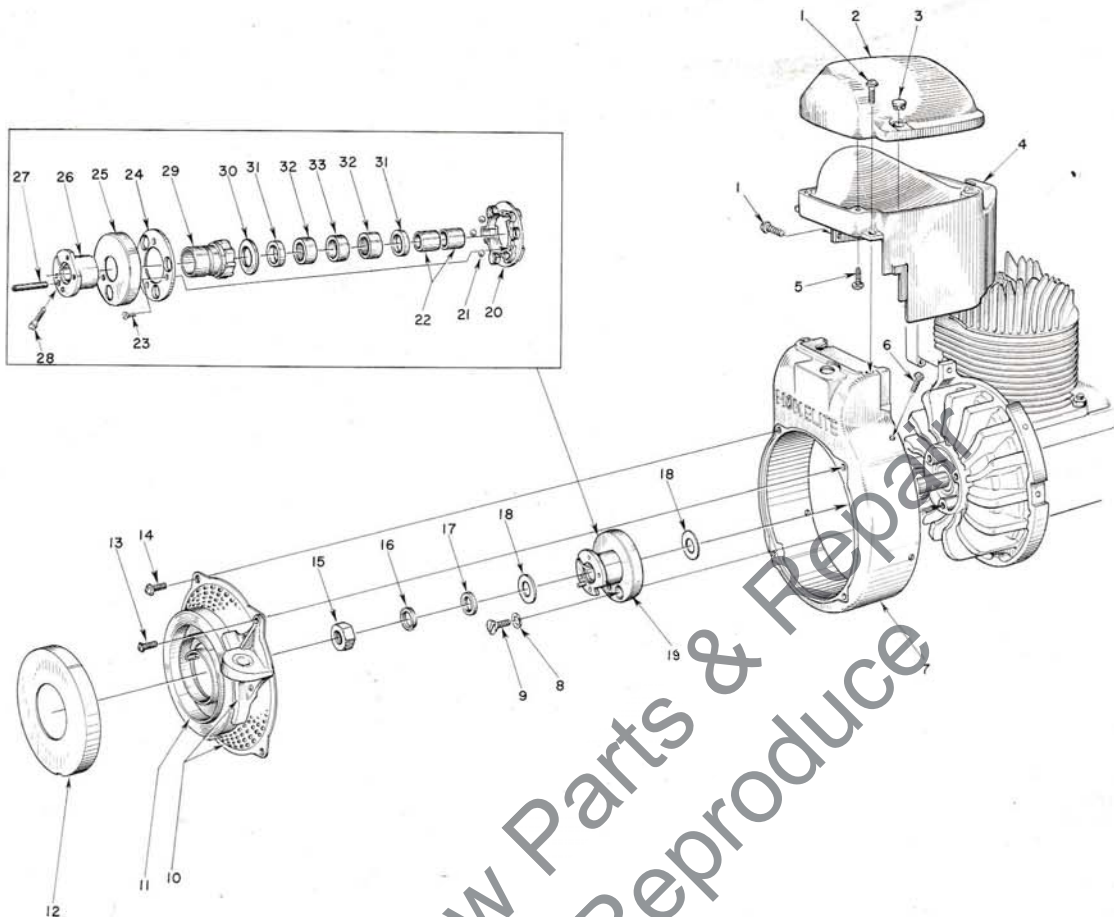


FIGURE 6 — BALL DRIVE AND AIR SHROUD

APRIL 1960

Index No.	Part No.	Description	No. Required	Index No.	Part No.	Description	No. Required
1	80560	SCREW — 8-32 x 1/2 pan hd.	3	18	55652	WASHER — thrust	2
2	56968	CAP — cylinder shield	1	19	A-56899	BALL DRIVE	1
	57029	DECAL — "Homelite"	1			Includes	
3	32814	PLUG — button	1	20	71563-C	PLATE — ball drive	1
4	56967-1	SHIELD — cylinder	1	21	30355-1	BALL — steel	3
5	80513	SCREW — 6-32 x 1/2 pan hd.	4	22	74221	RACE — inner	2
6	80577	SCREW — 8-32 x 3/8 pan hd.	4	23	80464	SCREW — 5-40 x 5/16 flat hd.	3
7	A-56063-1	SHROUD — air	1	24	71570-B	RETAINER — ball	1
8	83074	WASHER — lock, countersunk 1/4	3	25	56896	CUP — sealing	1
9	80173	SCREW — 1/4-20 x 5/8 flat hd.	3	26	A-57098	HUB — ratchet	1
10	A-56088	SCREEN and BRACKET	1			Includes	
		Includes		27	57065	PIN — spirol	1
	*A-56085	BRACKET and BUSHING	1	28	72295-A	SCREW — ratchet hub	1
		Includes			AA-72306-1	RATCHET and BEARING	1
	55363-A	BUSHING	1			Includes	
11	56497	SPRING — recoil	1	29	AA-73549	RATCHET	1
12	71603	COVER — spring housing	1			Includes	
13	80572	SCREW — 10-32 x 3/8 (through bracket)	1			Includes	
14	80579	SCREW — 10-32 x 3/8 pan hd.	3	30	73525	WASHER — formica	1
15	81110	NUT — 7/16-20 hex-jam	1	31	71597	SEAL — garlock	2
16	83019	WASHER — lock, 7/16	1	32	71596	BEARING — needle	2
17	84055	WASHER — flat aluminum, 7/16	1	33	71595	WICK — felt	1

\*Assemble to screen with 85073 rivet

# HOMELITE CHAIN SAW MODEL 700 D

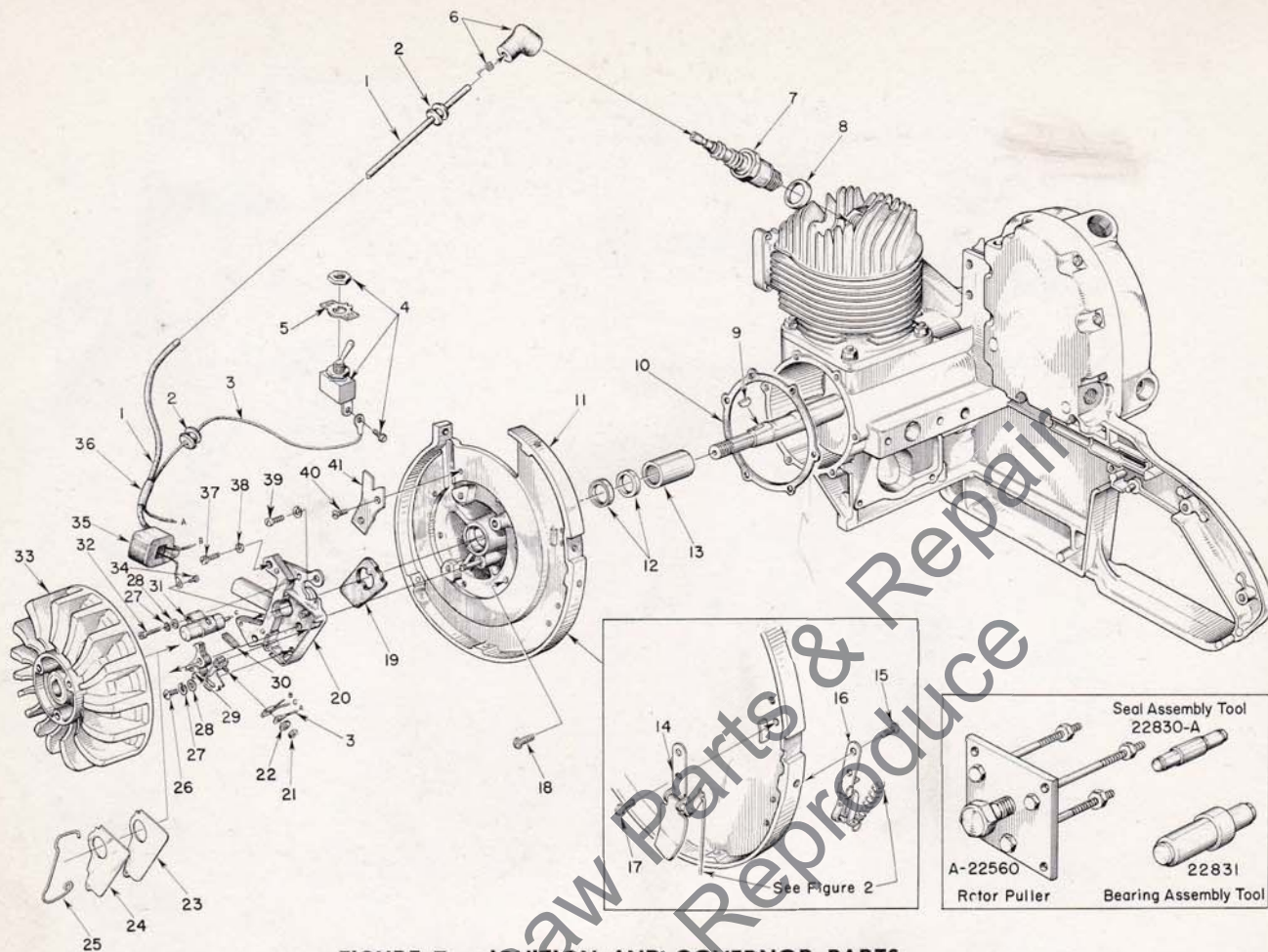


FIGURE 7 — IGNITION AND GOVERNOR PARTS

APRIL 1960

Index No.	Part No.	Description	No. Required
1	56029	LEAD — high tension	1
2	60929	GROMMET	2
3	56028	LEAD — ground	1
4	A-55877	SWITCH — toggle	1
5	55879	PLATE — "on-off"	1
6	A-55373	TERMINAL — "Sparky" (cover & spring)	1
7	71530-S	SPARK PLUG (HO-8A)	1
8	25038	GASKET (included with spark plug)	1
9	75078	KEY — rotor	1
10	55049	GASKET — back plate	1
11	A-56180-A	BACK PLATE (with pivot post)	1
		Includes	
12	71597	SEAL — garlock	2
13	55204	BEARING — needle	1
14	*A-56150	GOVERNOR	1
15	80629	SCREW — 8-32 x 3/16 pan hd.	2
16	**A-55645	PLATE — governor adjusting	1
17	80605	SCREW — 6-32 x 5/16 pan hd.	2
18	80576	SCREW — 10-32 x 5/16 pan hd.	6
19	55989	WASHER — sealing, felt	1
20	55969	BOX — breaker, w/core	1

Index No.	Part No.	Description	No. Required
21	55982	NUT — terminal	1
22	55983	WASHER — terminal	1
23	55978	GASKET — dust cover	1
24	55979	COVER — dust	1
25	55980	CLAMP — dust cover	1
26	55985	SCREW — 8-32 x 3/8 fil. hd.	1
27	83060	WASHER — lock	2
28	84048	WASHER — flat	2
29	A-55971	POINTS (set)	1
30	55984	WICK — felt	1
31	55987	CONDENSER (with terminal)	1
32	55988	SCREW	1
33	56111	ROTOR	1
34	55977	SCREW — coil ground	1
35	55986	COIL (with terminals)	1
36	56027	SLEEVE — insulating	1
37	80660	SCREW — 10-24 x 7/8 fil. hd.	2
38	83046	WASHER — #10 lock	3
39	80595	SCREW — 10-24 x 1/2, fil. hd.	1
40	80598	SCREW — 6-32 x 5/16 flat hd.	2
41	55595-1	CLAMP — lead	1

\*Does not include governor rod; see Figure 2.

\*\*Does not include tension spring; see Figure 2.



# HOMELITE CHAIN SAW MODEL 700 D

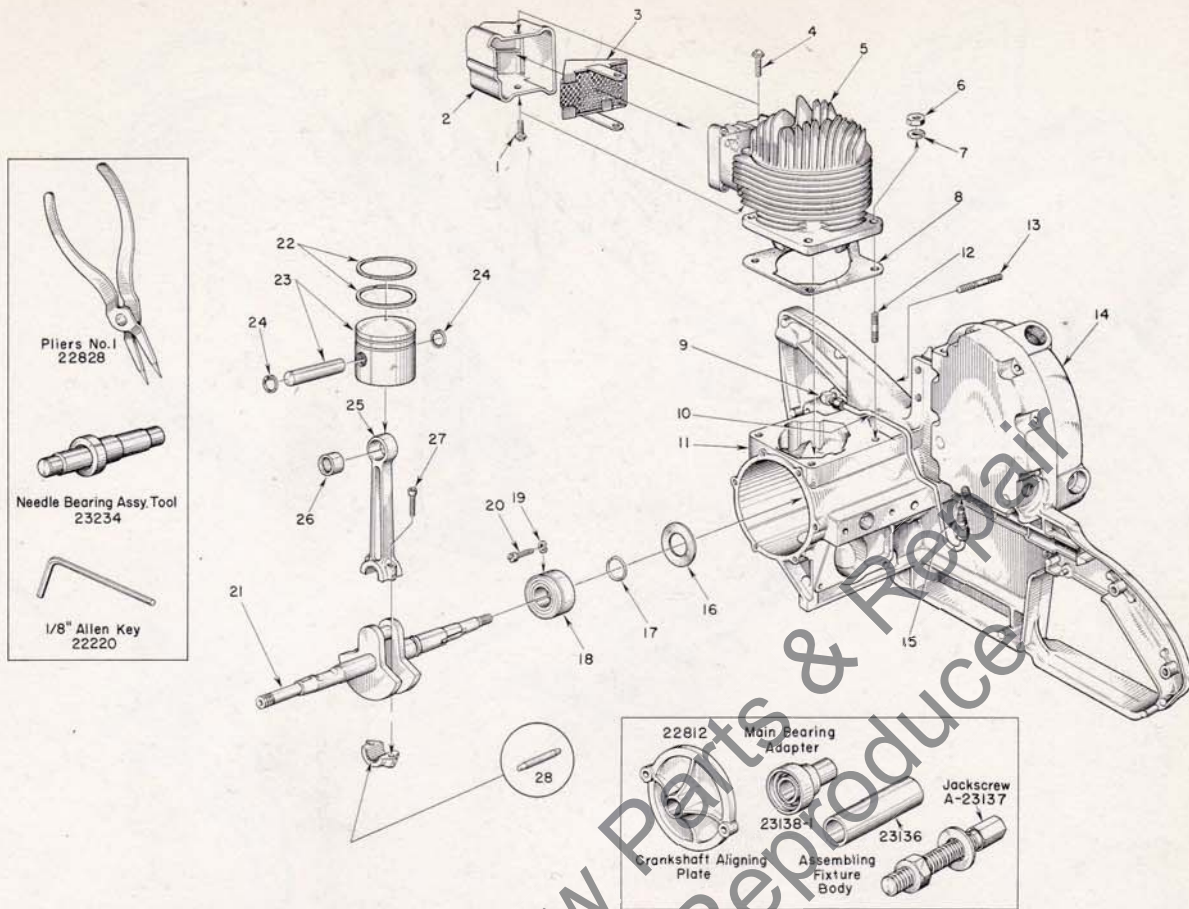


FIGURE 8 — ENGINE ASSEMBLY

APRIL 1960

Index No.	Part No.	Description	No. Required
1	80625	SCREW — 10-32 x 1/2 pan hd.	1
2	55506-A	DAMPER — heat	1
3	A-56613-A	CAP — exhaust	1
4	80583	SCREW — 10-32 x 3/4 pan hd.	1
5	56834-1	CYLINDER	1
6	81065-2	NUT — hex 1/4-28	4
7	83009	WASHER — lock 1/4	4
8	56864	GASKET — cylinder	1
9	56707	ELBOW — connector 90°	1
10	A-55625	LINE — chain oil	1
11	A-57097	CRANKCASE w/pivot pin	1
		Includes	
12	56470	STUD — cylinder	4
13	55623	STUD — guide bar	2
14	A-55621	COVER — oil reservoir	1
	55833	GASKET — reservoir cover	1
	80622	SCREW — self-tapping	9

Index No.	Part No.	Description	No. Required
	55372	PAD — felt	1
15	A-55824	VALVE — check	1
16	55048-A	GASKET — crankcase sealing	1
17	56109	RING — snap	1
18	56097-S	BEARING — main	1
19	83061	WASHER — lock, special thin	2
20	19238-A	SCREW — main bearing retaining	2
21	56098-C	CRANKSHAFT	1
22	56291	RING — piston	2
23	A-57070	PISTON and PIN	1
		Includes	
24	55095	RING — piston pin retaining	2
25	AA-55195	CONNECTING ROD	1
		Includes	
26	55196	BEARING — piston pin	1
27	80541	SCREW — 8-32 x 1/2 allen cap	2
28	AA-55280	ROLLERS (set of 27)	1

# HOMELITE CHAIN SAW MODEL 700 D

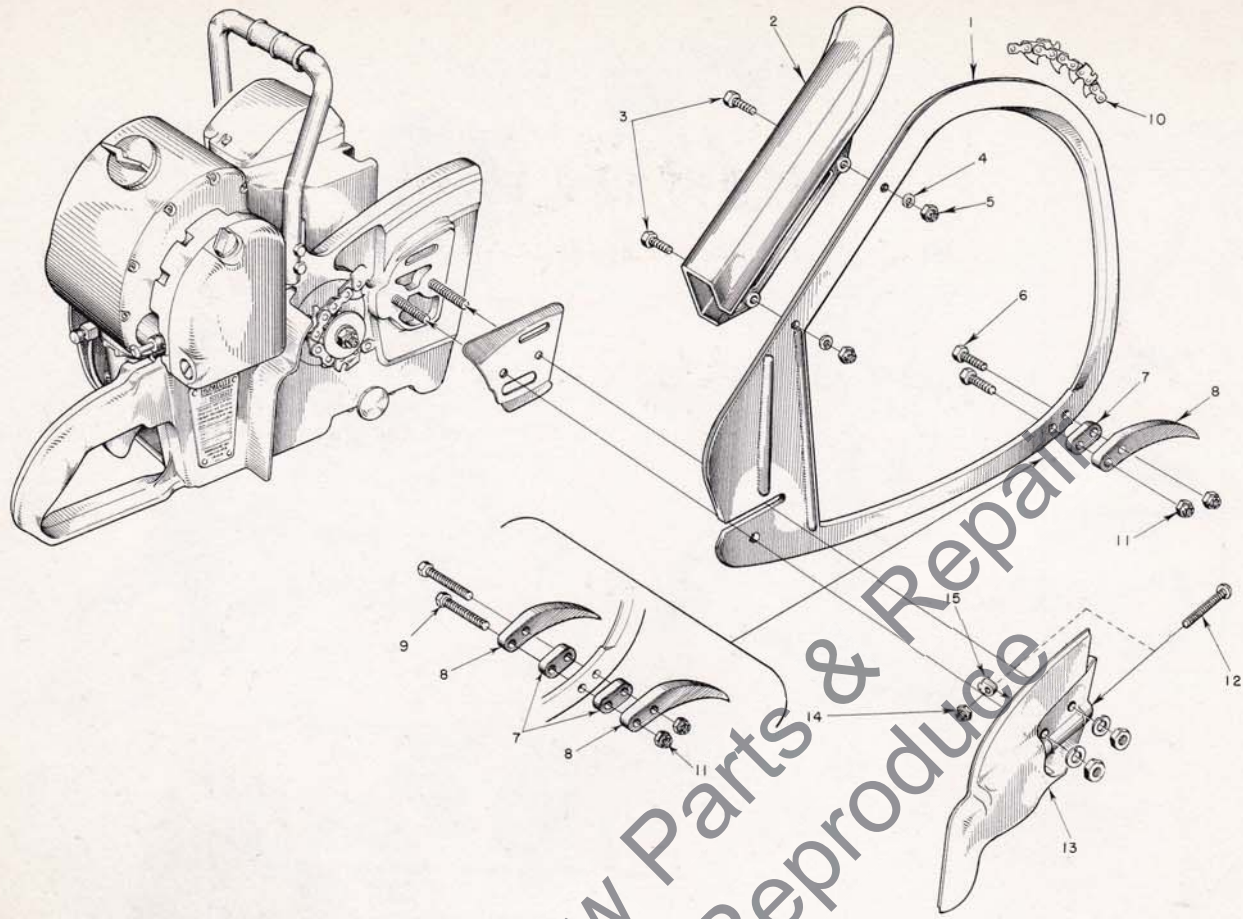


FIGURE 9 — BOW SAW PARTS

APRIL 1960

Index No.	Part No.	Description	No. Required	Index No.	Part No.	Description	No. Required
1	A-56485	BOW GUIDE—16"	1	10	A-51850	BOW CHAIN—16", #62C	
2	55952	GUARD	1	11	81112	NUT— $\frac{5}{16}$ -24 hex	2
3	80355	SCREW— $\frac{1}{4}$ -20 x $\frac{1}{2}$ hex hd.	2		A-55668-1	COVER—drive case	1
4	83009	WASHER— $\frac{1}{4}$ lock	2			Includes	
5	81013	NUT— $\frac{1}{4}$ -20 hex	2	12	80617	SCREW— $\frac{5}{16}$ -18 x 2" rd. hd.	1
6	80546	SCREW— $\frac{5}{16}$ -24 x $1\frac{1}{4}$ hex hd.	2	13	**	COVER	1
7	*75729	SPACER		14	81123	NUT— $\frac{5}{16}$ -18 hex lock	1
8	*75728	SPUR		15	55613	PIN—adjusting	1
9	†80606	SCREW— $\frac{5}{16}$ -24 x $1\frac{3}{4}$ hex hd.	2				

\*Optional Equipment—1 or 2 per bow

\*\*Not sold separately

†Use when bow has two spurs and two spacers

# HOMELITE

## Authorized Sales and Service Branches

Homelite sales and service factory branches are located throughout the country. Field representatives and factory-trained servicemen are always available, ready and able to keep your Homelites running in top performance at all times. See the "Yellow Pages" for the address and phone number of your nearest Homelite Branch office.

### California

Alhambra (Los Angeles area)  
Fresno  
Sacramento  
S. San Francisco

### Colorado

Denver

### Connecticut

Byram  
Hartford

### Florida

Jacksonville  
Miami

### Georgia

Atlanta

### Illinois

Bloomington  
Springfield  
Stone Park (Chicago area)

### Indiana

Indianapolis

### Louisiana

Bossier City  
Metairie

### Maine

Orono

### Maryland

Baltimore

### Massachusetts

Allston (Boston area)

### Michigan

Detroit  
Grand Rapids

### Minnesota

St. Paul

### Missouri

Kansas City  
St. Louis

### Nebraska

Omaha

### New Jersey

North Arlington  
Woodbridge

### New York

Buffalo  
Latham (Albany area)  
Rochester  
Syracuse

### North Carolina

Charlotte  
Raleigh

### Ohio

Cincinnati  
Cleveland  
Toledo

### Oklahoma

Oklahoma City

### Oregon

Portland

### Pennsylvania

Altoona  
Erie  
Harrisburg  
Hazleton  
Malvern  
Philadelphia  
Pittsburgh

### Tennessee

Knoxville  
Memphis

### Texas

Dallas  
Lufkin

### Utah

North Salt Lake

### Virginia

Arlington  
Richmond  
Roanoke

### Washington

Seattle  
Spokane

### West Virginia

Charleston  
Clarksburg

### Wisconsin

Milwaukee

### DOMINION OF CANADA TERRY MACHINERY CO., LTD.

#### Quebec

Montreal  
Quebec City

#### Alberta

Edmonton

#### British Columbia

Vancouver

#### New Brunswick

Moncton

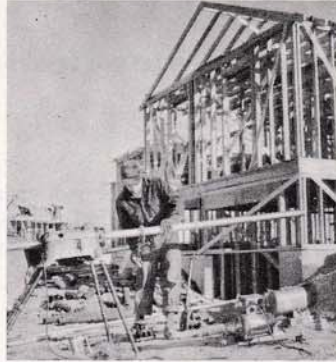
#### Ontario

Ottawa  
Toronto

**You'll  
SPEED WORK  
and make  
MORE MONEY  
with...**



**HOMELITE**  
SELF-PRIMING PUMPS



**HOMELITE**  
DEPENDABLE GENERATORS



**HOMELITE**  
POWERFUL ONE-MAN CHAIN SAWS



**HOMELITE**  
ONE-MAN CONCRETE VIBRATORS



**HOMELITE** — BOSCH (Germany)  
ELECTRIC BUILDER'S HAMMERS

**All Powered By Famous HOMELITE Engines**

Homelite's two-cycle gasoline engines are the most efficient and dependable units of their kind ever built. Their two-cycle design, developed to perfection by Homelite engineers over the past 35 years, gives maximum power for the least weight because power is produced at every piston down stroke. As an added advantage, this design requires fewer moving parts which means greater dependability and lower maintenance