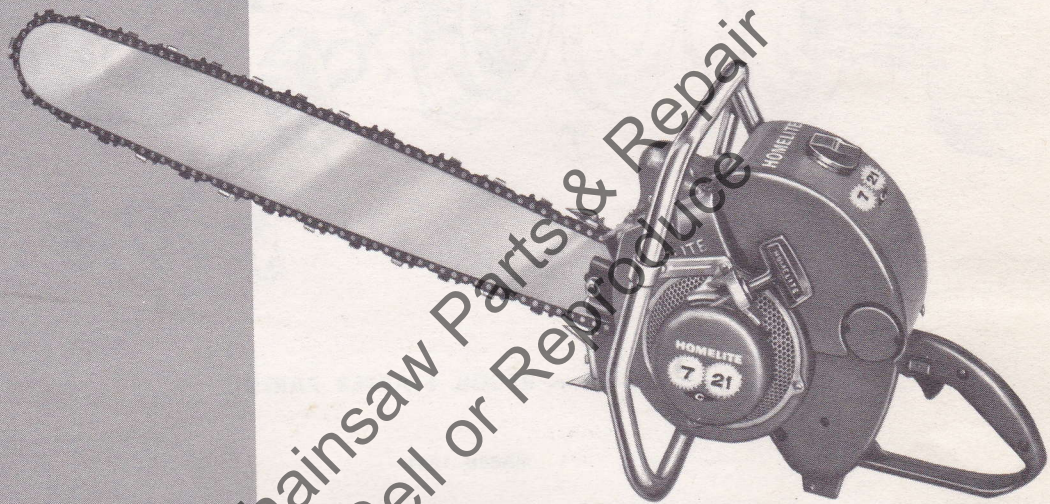


HOMELITE

Chain Saw

March 1959



Leon's Chainsaw Parts & Repair
Do Not Sell or Reproduce

PARTS LIST



Model 7-21C

HOMELITE CHAIN SAW MODEL 7-21 C

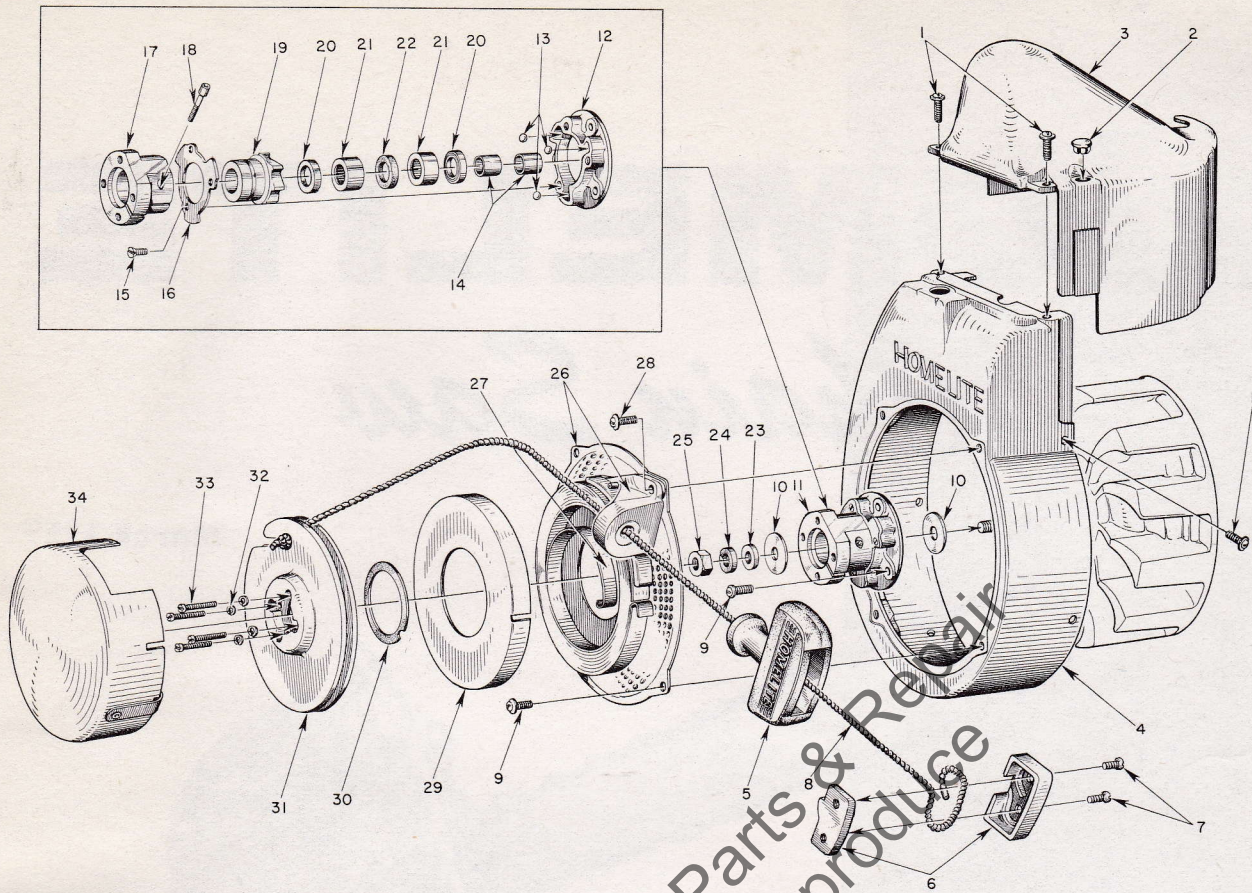


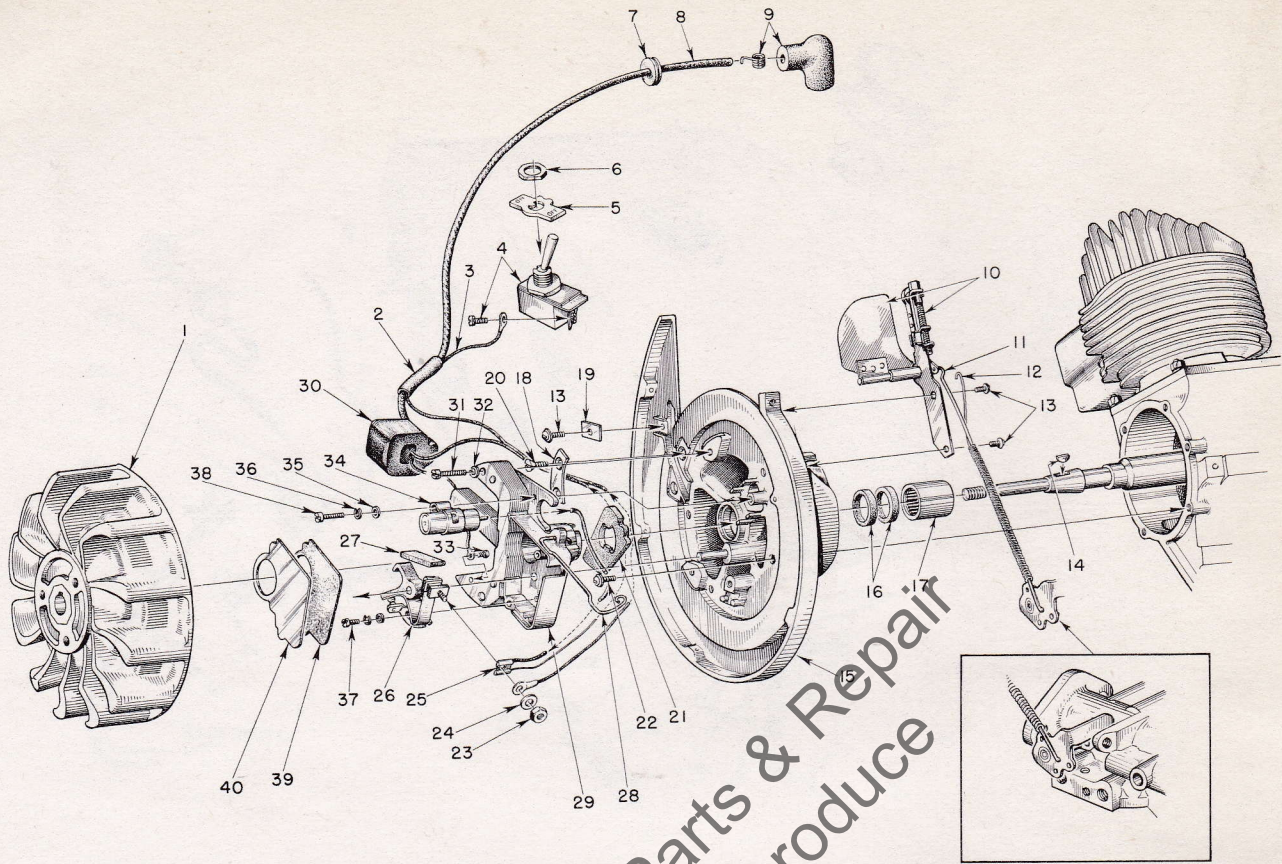
FIGURE 1 — RECOIL STARTER PARTS

MARCH 1959

Index No.	Part No.	Description	No. Required	Index No.	Part No.	Description	No. Required
1	80577	SCREW — 8-32 x 3/8 pan hd.	6			Includes	
2	32814	PLUG	1	19	A-55348	RATCHET — w/washer	1
3	55015-2	SHIELD — cylinder	1			Includes	
4	A-56006	SHROUD — air, w/inserts	1		55271	WASHER — formica	1
5	55937	GRIP — starting	1	20	55272	SEAL — garlock	2
6	A-56081	INSERT — grip w/cover	1	21	55215	BEARING — needle	2
		Includes		22	55214	FELT	1
7	80619	SCREW	2	23	84070	WASHER — 3/8 flat aluminum	1
8	55898	ROPE — nylon	1	24	83018	WASHER — 3/8 lock	1
9	80579	SCREW — 10-32 x 3/8 pan hd.	6	25	81124	NUT — 3/8 hex.	1
10	55585	WASHER — thrust	2	26	A-55998	SCREEN — air	1
11	A-56489	BALL DRIVE				Includes	
		Includes			A-55999	BRACKET w/55363-A bushing	1
12	55054-A	PLATE — ball drive	1	27	56497	SPRING — recoil	1
13	55217	BALL — steel	3	28	80576	SCREW — 10-32 x 1/8 pan hd. (through bracket)	1
14	55584	SLEEVE	2	29	71603	COVER — spring housing	1
15	80588	SCREW — 5-40 x 5/16 flat hd.	3	30	71588	SHIM — plastic	as req'd.
16	55097	RETAINER — ball	1	31	55362-1	PULLEY	1
17	A-56517	HUB & SCREW	1	32	83004	WASHER — #6 lock	4
		Includes		33	80475	SCREW — 6-32 x 3/4 fil. hd.	4
18	72295-A	SCREW — hub	1	34	AA-73234-1	COVER — pulley	1
	AA-55213	RATCHET & BEARING	1		56591	DECAL — "Homelite 7-21 C" (pulley cover)	1

Always furnish saw model and serial number when ordering parts

HOMELITE CHAIN SAW MODEL 7-21 C



Assemble Governor Arm into this hole in Throttle Stop Lever as indicated.

FIGURE 2 — IGNITION AND GOVERNOR PARTS

MARCH 1959

Index No.	Part No.	Description	No. Required	Index No.	Part No.	Description	No. Required
1	55994	ROTOR	1	19	55161	CLAMP—outer	1
2	55290	SLEEVE—insulating	1	20	80598	SCREW—6-32 x 5/16 flat hd.	2
3	55990	LEAD—ground	1	21	55989	WASHER—sealing, felt	1
4	AA-72094-A	SWITCH w/screw	1	22	80576	SCREW—10-32 x 1/16 pan hd.	6
		Includes		23	55982	NUT—terminal	1
5	55879	PLATE (on/off)	1	24	55983	WASHER—terminal	1
6	72084-A1	NUT	1	25	*	TERMINAL—jam-tite	1
7	60929	GROMMET	1	26	A-55971	POINTS—(set)	1
8	55235-A	LEAD—high tension	1	27	55984	WICK—felt	1
9	A-55373	TERMINAL (sparky)	1	28	55980	CLAMP—dust cover	1
10	A-55996	GOVERNOR	1	29	55969	BOX—breaker w/core	1
		Includes		30	55986	COIL	1
	84066	WASHER—governor arm burr	1	31	80660	SCREW—10-24 x 7/8 fil. hd.	2
11	55943	ARM—governor	1	32	83046	WASHER—#10 lock	2
12	56179	SPRING	1	33	55977	SCREW	1
13	80575	SCREW—8-32 x 1/4 pan hd.	3	34	55987	CONDENSER w/terminal	1
14	75078	KEY—rotor	1	35	84048	WASHER—flat	2
15	A-56165	BACKPLATE w/pivot post	1	36	83060	WASHER—lock	2
		Includes		37	55985	SCREW—8-32 x 3/8 fil. hd.	1
16	71597	SEAL—garlock	2	38	55988	SCREW	1
17	55204	BEARING—needle	1	39	55978	GASKET—dust cover	1
18	55962	CLAMP—inner	1	40	55979	COVER—dust	1

* Not required for service. Replacement coils and condensers include terminals.

Always furnish saw model and serial number when ordering parts

HOMELITE CHAIN SAW MODEL 7-21C

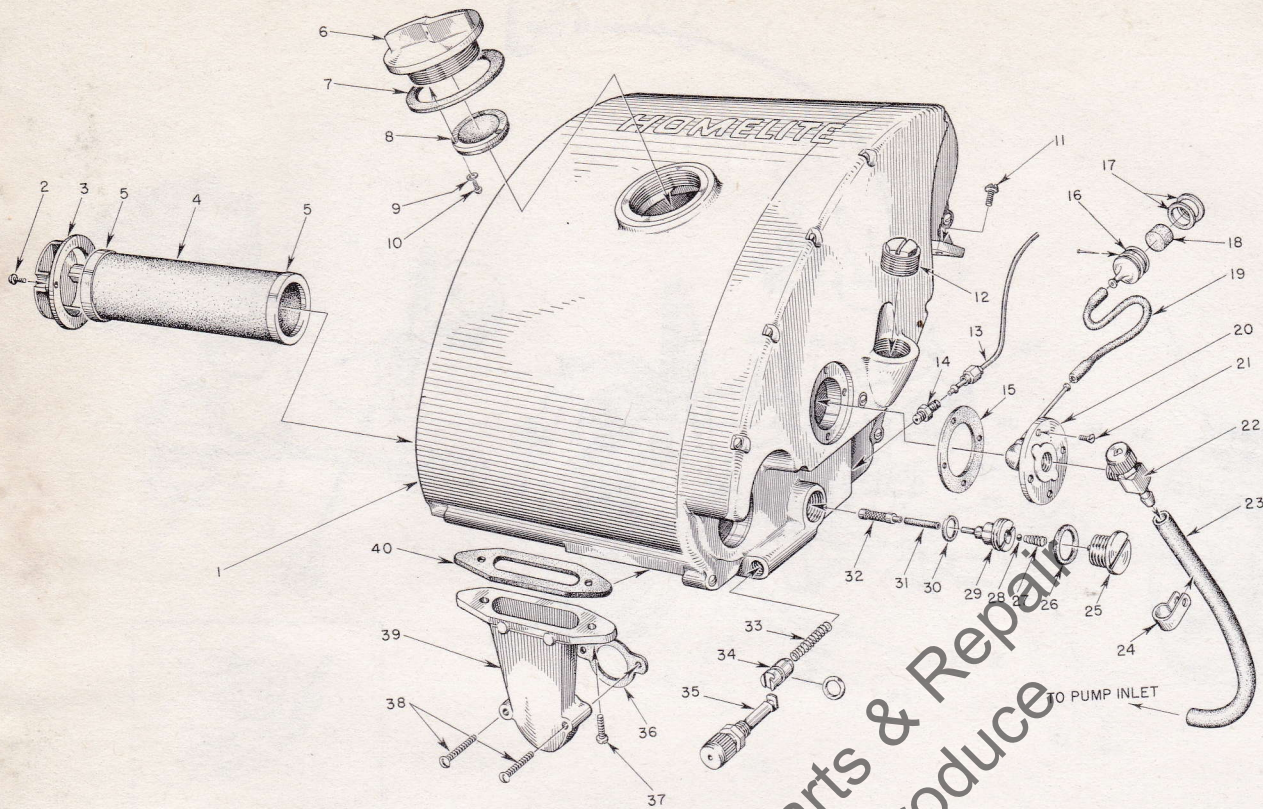


FIGURE 3 FUEL TANK

MARCH 1959

Index No.	Part No.	Description	No. Required	Index No.	Part No.	Description	No. Required
1	A-55830	FUEL TANK		18	74374	FILTER — felt	1
	56398	DECAL — "Homelite" (for fuel tank)		19	55805	SLEEVE — flexible	1
	55968-A	DECAL — "Instructions" (for fuel tank)	1	20	AA-72475	FITTING — fuel outlet	1
	56382-A	DECAL — "7-21 C" (for fuel tank)	1	21	80451	SCREW — 6-32 x 3/8 flat hd.	4
2	80571	SCREW — 6-32 x 3/8 pan hd.	2	22	55738	VALVE — shut-off	1
3	55494	CAP — air filter	1	23	A-56379	LINE — fuel	1
4	A-55533	FILTER — air	1	24	56014	CLIP — fuel line, nylon	1
		Includes		25	AA-55167	CAP — oil supply line	1
5	55532	GASKET (cemented to filter)	2	26	55107	GASKET	1
6	A-55305	CAP — fuel	1	27	55288-A	SPRING — check valve	1
		Includes		28	25527	BALL — check	1
7	72173	GASKET	1	29	55109-A	SEAT — check ball	1
8	A-55301-C	VALVE — relief	1	30	55110	GASKET	1
9	83083	WASHER — #3 lock	3	31	55133-A	SLEEVE — flexible	1
10	80592	SCREW — 3-48 x 1/4 rd. hd.	3	32	AA-55259-A	PICK-UP — oil	1
11	80582	SCREW — 8-32 x 5/8 pan hd.	1	33	71762	SPRING — plunger	1
12	55140-A	CAP — oil filler	1	34	A-74406	TUBE — plunger (includes 74388 "O" ring)	1
13	AA-55191	LINE — oil	1	35	71764	BUTTON — plunger	1
14	A-55824	VALVE — check	1	36	72971-1	GASKET — air elbow	1
15	72174	GASKET	1	37	80572	SCREW — 10-32 x 5/8 pan hd.	2
16	A-56200	BODY — fuel strainer, w/brass nail	1	38	80624	SCREW — 10-32 x 1 pan hd.	2
		Includes		39	55019-3	ADAPTER — air filter	1
17	56196	BUMPER — rubber	2	40	55059	GASKET — adapter	1

HOMELITE CHAIN SAW MODEL 7-21 C

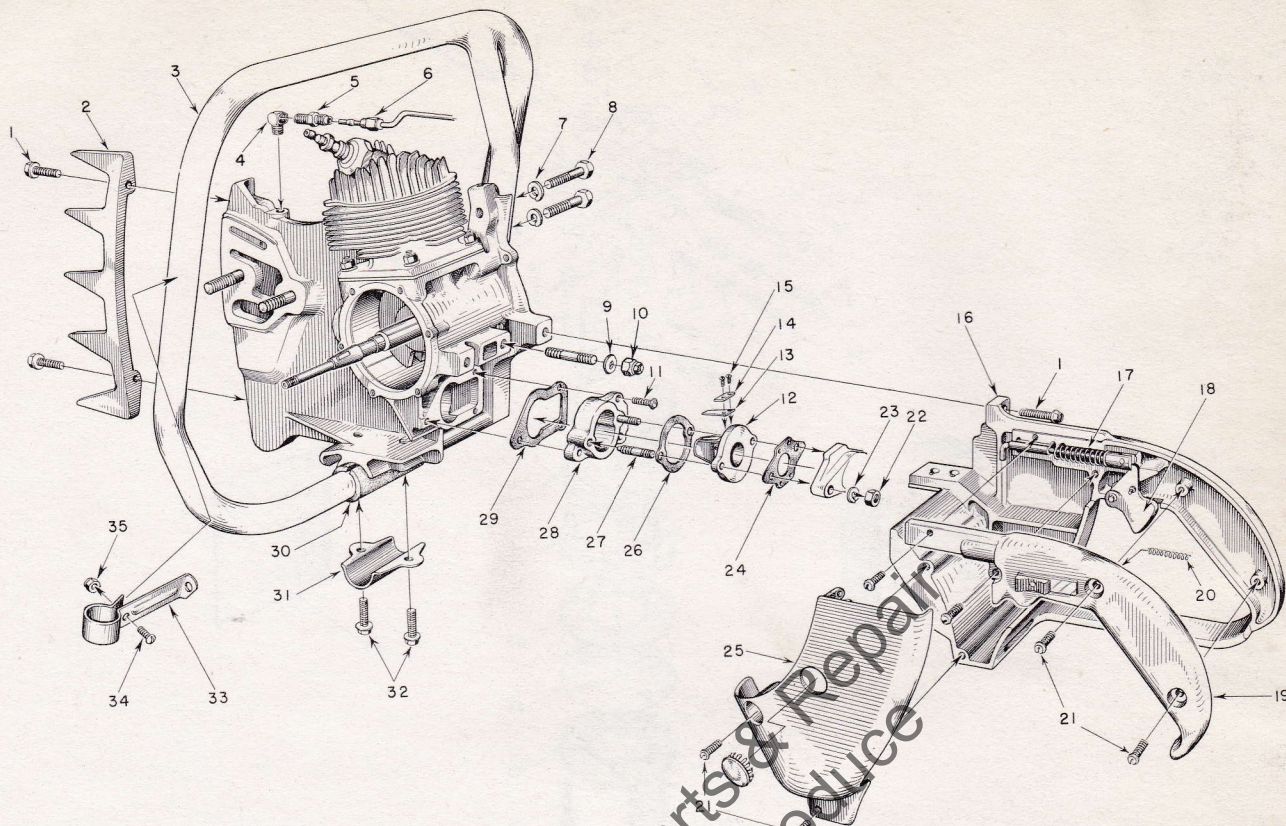


FIGURE 4 — HANDLE GRIP AND REED VALVE PARTS

MARCH 1959

Index No.	Part No.	Description	No. Required
1	80573	SCREW — 1/4-20 x 1 3/4 hex hd.	5
2	55103	PLATE — bumper	1
3	AA-55119	HANDLE — flush-cut (7-21 C)	1
	AA-55518	HANDLE — wrap-around (7-21 CA)	1
4	31734	ELBOW — connector	1
5	31733-1	ADAPTER — straight	1
6	AA-55191	LINE — chain oil	1
7	83003	WASHER — 5/16 lock	2
8	80087	SCREW — 5/16-18 x 1 1/2 hex hd.	2
9	84020	WASHER — 1/4 flat	2
10	81130	NUT — 1/4-28 flex-lock	2
11	80583	SCREW — 10-32 x 3/4 pan hd.	3
12	55932	ADAPTER — reed valve	1
13	55941	REED	4
14	55942	PLATE — reed	4
15	80658	SCREW — 4-40 x 3/16 pan hd.	8
16	AA-55281	GRIP — pistol w/pin and 55372 felt	1
17	A-55954	ROD — throttle	1
		Includes	
	55045-A	SPRING	1
18	AA-55207	TRIGGER — throttle	1
19	AA-55228	COVER — pistol grip	1

Index No.	Part No.	Description	No. Required
		Includes	
	AA-55282	LOCK — throttle	1
		Includes	
20	72970	SPRING — lock	1
21	80560	SCREW — 8-32 x 1/2 pan hd.	6
22	81013	NUT — 1/4-20 hex	2
23	83009	WASHER — 1/4 lock	2
24	55553	GASKET — carburetor	1
25	55104-1	SHIELD — carburetor	1
	29187	PLUG — button	1
26	55946	GASKET — spacer-adapter	1
27	55945	STUD	2
28	55933	SPACER — reed adapter	1
29	55116	GASKET	1
30	55146	CUSHION — handle	1
31	55145	CLAMP — handle	1
32	80581	SCREW — 1/4-20 x 5/8 hex hd.	2
33	A-55740	BRACE — handle	1
		Includes	
34	80578	SCREW — 10-32 x 7/16	1
35	81109	NUT — 10-32 lock	1

Always furnish saw model and serial number when ordering parts

HOMELITE CHAIN SAW MODEL 7-21C

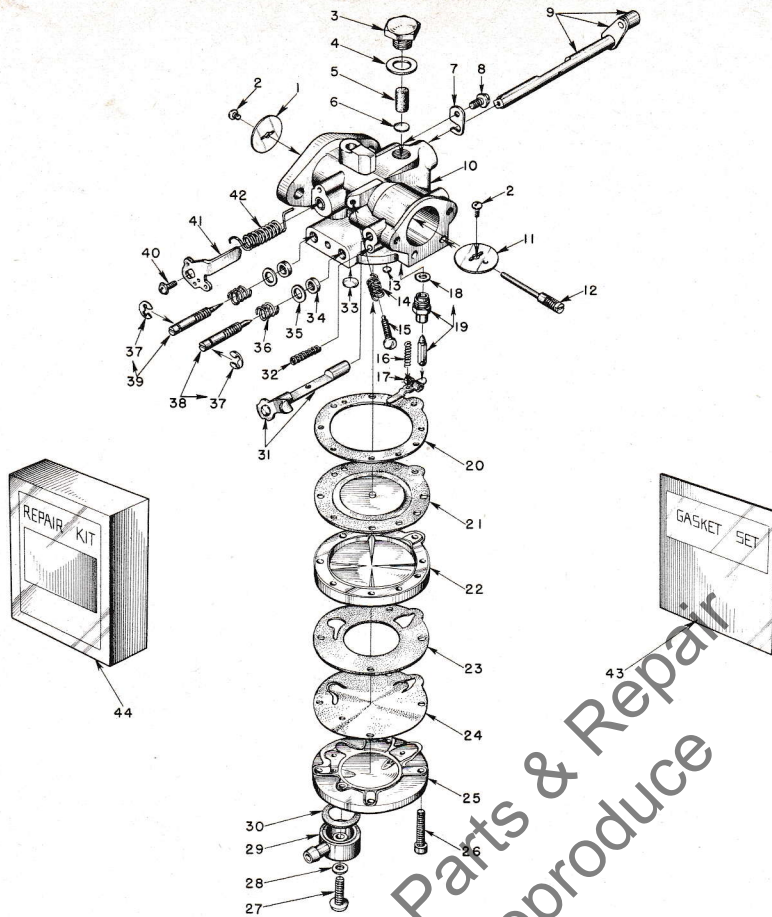


FIGURE 5 — BROWN 1-CP CARBURETOR PARTS

MARCH 1959

Index No.	Part No.	Description	No. Required	Index No.	Part No.	Description	No. Required
	A-56505	CARBURETOR MODEL 1-CP	1	22	77301	COVER — main diaphragm	1
		Includes		23	*77305	GASKET — pump body	1
1	74980	SHUTTER — throttle	1	24	*77304	DIAPHRAGM — pump	1
2	77044	SCREW — shutter, 4-40 x 1/8 rd. hd.	2	25	77316	BODY — fuel pump	1
3	†77306	SCREW — plug	1	26	77160	SCREW — body, 6-32 x 3/4 fil. hd.	4
4	*77307	GASKET — plug screw	1	27	77320	SCREW — fuel connection	1
5	†77308	FILTER — felt	1	28	*74997	GASKET — fibre	1
6	†77317	SCREEN — filter	1	29	77318	TURRET — fuel inlet connection	1
7	†74981	CLIP — throttle shaft	1	30	*77319	GASKET — inlet connection	1
8	†77041	SCREW — throttle clip, 6-32 x 1/4 pan hd.	1	31	A-77322	SHAFT & LEVER — choke	1
9	A-77253	SHAFT — throttle	1	32	77311	SPRING — choke friction	1
10	A-77321	BODY — service	1	33	†74977	PLUG — Welch (large)	1
11	74991	SHUTTER — choke	1	34	*77007	RING — square	2
12	†77014	PIN — fulcrum	1	35	†77006	WASHER — adjustment packing	2
13	†77309	PLUG — Welch (main nozzle)	1	36	†77005	SPRING — adjustment compression	2
14	77010	SPRING — idle speed screw	1	37	77004	CLIP — spring retaining	2
15	77040	SCREW — idle speed, 6-32 x 1/8 rd. hd.	1	38	†A-77328	SCREW — main adjusting, w/77004 clip	1
16	†77015	SPRING — diaphragm lever tension	1	39	†A-77251	SCREW — idle adjusting w/77004 clip	1
17	†77016	LEVER — diaphragm	1	40	†77042	SCREW — idle stop	1
18	*77346	GASKET — copper	1	41	77247	LEVER — throttle stop	1
19	†A-77327	NEEDLE & SEAT — inlet w/gasket	1	42	†77313	SPRING — throttle friction	1
20	*77303	GASKET — main diaphragm	1	43	†77336	GASKET Set (GS-152)	1
21	*A-77323	DIAPHRAGM — main	1	44	77337	REPAIR PARTS KIT (RK-155)	1

*Included in GS-152 Gasket Set

†Included in RK-155 Repair Kit

HOMELITE CHAIN SAW MODEL 7-21C

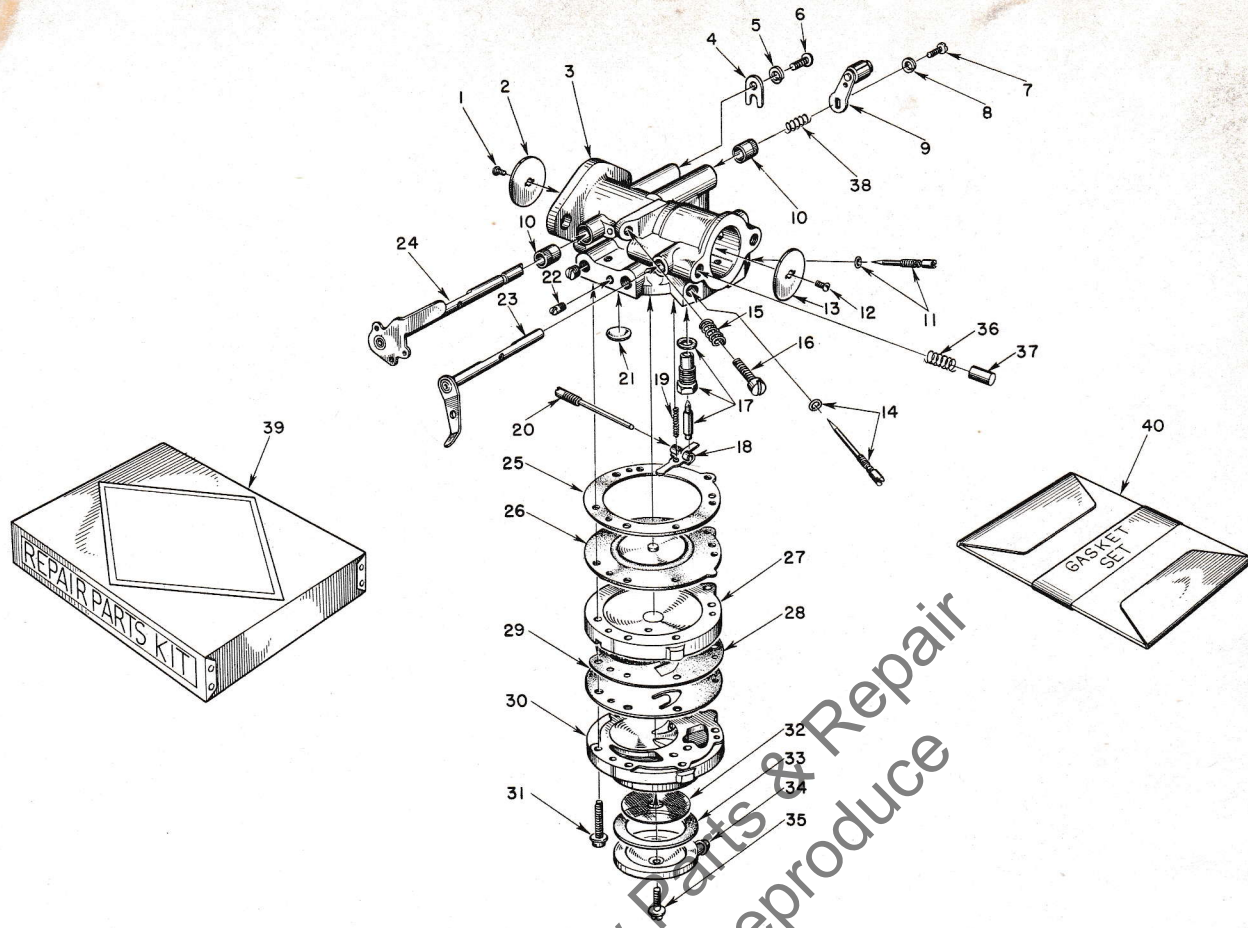


FIGURE 6 — TILLOTSON HL-27B CARBURETOR PARTS

MARCH 1959

Index No.	Part No.	Description	No. Required	Index No.	Part No.	Description	No. Required
	A-56066	CARBURETOR—Till. Model HL-27B	1	18	*55747	LEVER—inlet control	1
		Includes		19	*55759	SPRING—control lever	1
1	*80012	SCREW—throttle shutter	1	20	*A-55762	SCREW—pinion	1
2	73272	SHUTTER—throttle	1	21	30818	PLUG	1
3	A-75533	BODY—service	1	22	73067	PLUG—drain	1
4	73086	CLIP—throttle shaft	1		71505	PLUG	2
5	83000	WASHER—lock #8	1	23	A-55766	LEVER—choke	1
6	73088	SCREW—8-32 x 3/16 flat hd.	1	24	A-75624	SHAFT—throttle, w/stop lever	1
7	*71521	SCREW—4-36 x 1/4 rd. hd.	1	25	55754	GASKET—main diaphragm	1
8	*83008	WASHER—lock #4	1	26	*A-55760	DIAPHRAGM—main	1
9	A-75528	LEVER and ROLLER—throttle	1	27	55749	COVER—main diaphragm	1
10	72812	BUSHING—throttle shaft	2	28	55881	GASKET—pump diaphragm	1
11	*A-75527	SCREW—main adjust. (hi speed)	1	29	*55753	DIAPHRAGM—pump	1
		Includes		30	55748	BODY—pump	1
	55764	"O"—ring	1	31	*55316	SCREW and WASHER	6
12	*80012	SCREW—choke shutter (same as No. 1)	1	32	55752	SCREEN—fuel strainer	1
13	73263	SHUTTER—choke	1	33	55751	GASKET—pump cover	1
14	*A-75530	SCREW—idle adjust. (lo speed)	1	34	55750	COVER—pump	1
		Includes		35	55756	SCREW—retaining	1
	55764	"O"—ring	1	36	73264	SPRING—choke friction pin	1
15	*28064	SPRING—idle stop screw	1	37	71494	PIN—choke friction	1
16	*71509	SCREW—idle stop (speed control)	1	38	56175	SPRING	1
17	*A-55761	INLET NEEDLE and SEAT	1	39	75623	REPAIR PARTS KIT (RK-357)	1
		Includes		40	*55836	GASKET SET (GS-122)	1
	55344	GASKET—inlet seat	1				

* Included in Repair Parts Kit (RK-357)

HOMELITE CHAIN SAW MODEL 7-21C

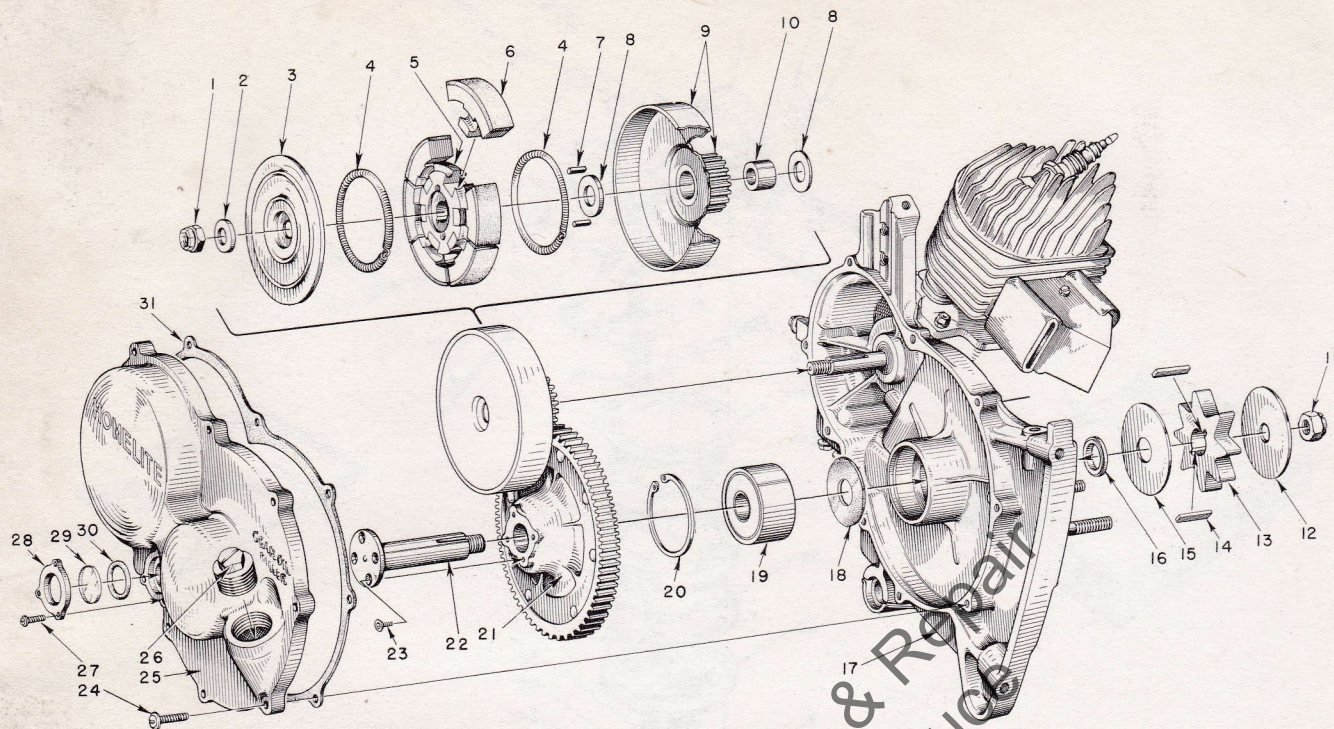


FIGURE 7 — GEAR CASE AND SPROCKET PARTS

2.84:1 Gear Ratio

MARCH 1959

Index No.	Part No.	Description	No. Required	Index No.	Part No.	Description	No. Required
1	81116	NUT — 3/8-24 flex-lock	1	17	*	CRANKCASE	1
2	55036	WASHER — clutch	1	18	56072	SEAL — formica	1
3	55126	COVER — clutch	1	19	56219	BEARING — ball	1
	A-56139	CLUTCH	1	20	28922	RING — retaining	1
		Includes		21	†A-56516	DRIVEN GEAR — 71 teeth	1
4	55123-A	SPRING	2	22	56070	SHAFT — sprocket	1
5	55075-1	SPIDER	1	23	80651	SCREW — 12-28 x 3/8 flt hd., socket	4
6	A-55692	SHOE	6	24	80572	SCREW — 10-32 x 5/8 pan hd.	9
7	55225	KEY — clutch	2	25	AA-55226-A	COVER — gear case	1
8	56132	WASHER — thrust	2			Includes	
9	†A-56515	CLUTCH DRUM (and drive gear) — 25 teeth	1	26	55140-A	PLUG — oil filler	1
10	56133	BEARING — drive gear	1	27	80548	SCREW — Binder head, self tapping	3
11	81101	NUT — 1/2-20 flex-lock	1	28	55098	PLATE — window	1
12	56077	WASHER — sprocket (outer)	1	29	55099	WINDOW — plastic	1
13	55593-2	SPROCKET	1	30	55100	GASKET — "O" ring	1
14	56076	KEY — sprocket	2		56383-A	DECAL—"Homelite 7-21 C" (gear case cover)	1
15	56074	WASHER — sprocket (inner)	1	31	55053-A	GASKET — gearcase cover	1
16	56071	SPACER — sprocket	1				

* A-56207—for breakdown see Figure 8 Engine Assembly

† For 3.57:1 ratio, order A-56135 — 21 teeth

For 2:1 ratio, order A-56158 — 32 teeth

‡ For 3.57:1 ratio, order AA-55068-B — 75 teeth

For 2:1 ratio, order A-56154 — 64 teeth

HOMELITE CHAIN SAW MODEL 7-21C

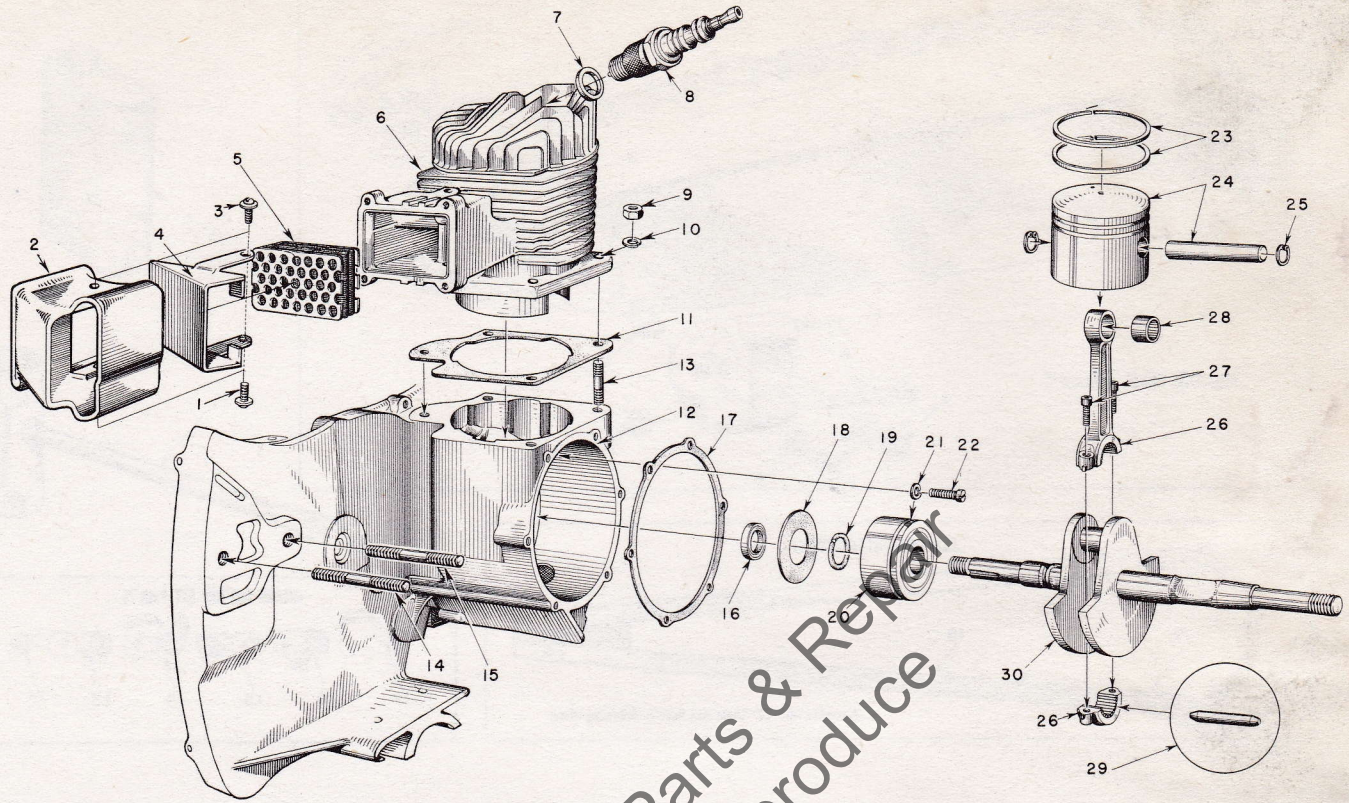


FIGURE 8 — ENGINE ASSEMBLY

MARCH 1959

Index No.	Part No.	Description	No. Required	Index No.	Part No.	Description	No. Required
1	80625	SCREW — 10-32 x 1/2 pan hd.	1	16	56134	SEAL — garlock	1
2	55506-A	DAMPER	1	17	55049	GASKET — back plate	1
3	80583	SCREW — 10-32 x 3/4 pan hd.	1	18	55048-A	GASKET — crankcase sealing	1
4	56396	CAP — exhaust	1	19	56109	RING — bearing retaining	1
5	A-56068	ELEMENT — muffler	1	20	56097	BEARING — main	1
6	*56182-A	CYLINDER	1	21	83061	WASHER — lock, special thin	2
7	25038	GASKET (included with spark plug)	1	22	19238-A	SCREW — main bearing retaining	2
8	71530	SPARK PLUG — Champion HO-8A	1	23	55537	RING — piston	2
9	81065-2	NUT — 1/4-28 hex	4	24	A-55599	PISTON and PIN	1
10	83009	WASHER — 1/4 lock	4			Includes	
11	55050-A	GASKET — cylinder	1	25	55095	RING — piston pin retaining	2
12	A-56207	CRANKCASE	1	26	AA-55195	CONNECTING ROD	1
		Includes				Includes	
13	56470	STUD	6	27	80541	SCREW — 8-32 x 1/2 allen cap	2
	28097	PLUG — pipe 1/8	1	28	55196	BEARING — piston pin	1
14	55606	STUD — guide bar (long)	1	29	AA-55280	ROLLERS (set of 27 needles)	1
15	55056-D	STUD — guide bar (short)	1	30	56131-A	CRANKSHAFT	1

* For Bow Saw order 56182-1A

HOMELITE CHAIN SAW MODEL 7-21C

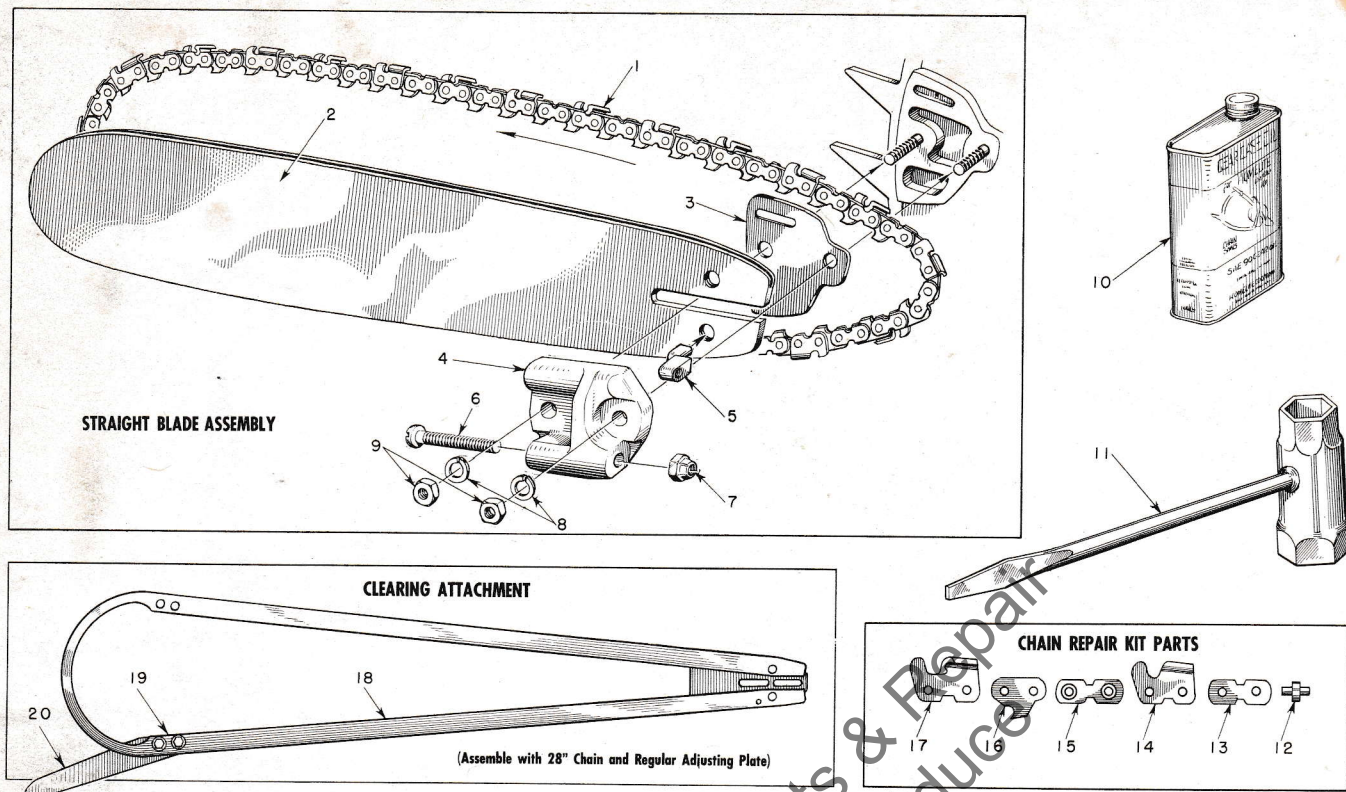


FIGURE 9 — SAW PARTS

MARCH 1959

Index No.	Part No.	Description	No. Required	Index No.	Part No.	Description	No. Required
		OREGON #10C 1/2 PITCH CHAIN			A-55591	ADJUSTING PLATE	1
1	A-55338	14" CHAIN—(with kit)	1			Includes	
	AA-73338	18" CHAIN—(with kit)	1	4	55551-B	PLATE—adjusting	1
	A-55319	20" CHAIN—(with kit)	1	5	55552	PIN—guide bar adjusting	1
	AA-73340	23" CHAIN—(with kit)	1	6	80617	SCREW—3/16-18 x 2 round hd.	1
	*AA-73342	28" CHAIN—(with kit)	1	7	81123	NUT—hex lock	1
	AA-73344	33" CHAIN—(with kit)	1	8	83018	WASHER—lock	2
	AA-73346	38" CHAIN—(with kit)	1	9	81089	NUT—3/8-16 hex	2
	AA-73350	44" CHAIN—(with kit)	1	10	55291-A	OIL—gear (pint can SAE-90)	1
	AA-73597	50" CHAIN—(with kit)	1	11	22808	WRENCH—combination	2
	AA-73598	60" CHAIN—(with kit)	1	AA-73314	REPAIR KIT—OREGON #10C CHAIN		
2	A-56590	14" BAR—.063	1			Includes	
	A-55718	18" BAR—hard track plus extra hard tip .063	1	12	72959	RIVET	4
	A-55720	20" BAR—hard track plus extra hard tip .063	1	13	72960	LINK—connecting (plain)	2
	A-55723	23" BAR—hard track plus extra hard tip .063	1	14	72964	CUTTER—left	1
	A-55728	28" BAR—hard track plus extra hard tip .063	1	15	AA-72961	LINK—connecting (w/rivets)	2
	55704-1	33" BAR—extra hard tip .063	1	16	73383	LINK—drive	1
	55705-1	38" BAR—extra hard tip .063	1	17	72963	CUTTER—right	1
	55706-1	44" BAR—extra hard tip .063	1	18	A-56169-A	CLEARING ATTACHMENT	1
	55707-1	50" BAR—extra hard tip .063	1			Includes	
	55708-1	60" BAR—extra hard tip .063	1	19	80604	SCREW—5/16-24 x 3/4 hex hd.	2
3	55128	SHIM	1	20	73820	SPUR—plunging	1

*Also fits clearing attachment.

HOMELITE CHAIN SAW MODEL 7-21C

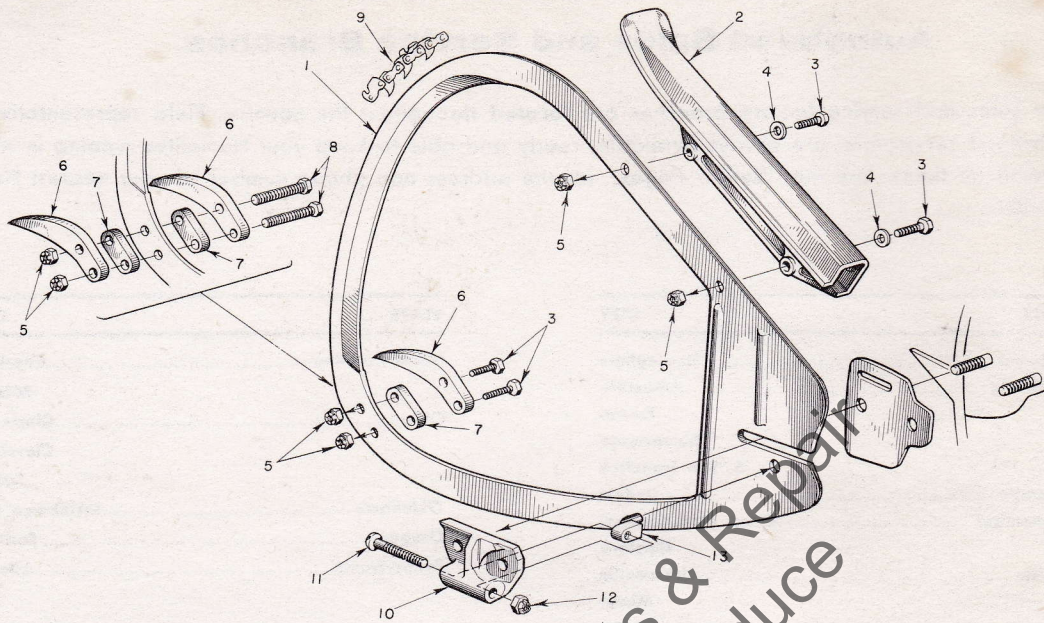


FIGURE 10 — PLUNGE CUT BOW ATTACHMENT

MARCH 1959

Index No.	Part No.	Description	No. Required	Index No.	Part No.	Description	No. Required
1	A-56486	16" BOW GUIDE	1	8	† 80606	SCREW — 5/16-20 x 1 3/4 hex	2
2	55948-A	GUARD	1	9	A-51972	16" BOW CHAIN — #10	1
3	80355	SCREW—1/4-20 x 1/2 hex	2	10	A-55591-1	ADJUSTING PLATE (bow)	1
4	83009	WASHER—1/4 lock	2			Includes	
5	81013	NUT—1/4-20 hex	2	11	80617	SCREW—tension adjusting	1
6	*75728	SPUR		12	81123	NUT	1
7	*75729	SPACER		13	55552	PIN	1

*Optional Equipment— 1 or 2 per bow.

†Use when bow has two spurs and two spacers

HOMELITE

Authorized Sales and Service Branches

Homelite sales and service factory branches are located throughout the country. Field representatives and factory-trained servicemen are always available, ready and able to keep your Homelites running in top performance at all times. See the "Yellow Pages" for the address and phone number of your nearest Homelite Branch office.

STATE	CITY
Alabama	Birmingham
California	Alhambra
	Fresno
	Sacramento
	S. San Francisco
Colorado	Denver
Connecticut	Byram (Port Chester)
	Hartford
Florida	Jacksonville
	Miami
Georgia	Atlanta
Illinois	Bloomington
	Springfield
	Stone Park (Chicago)
Indiana	Indianapolis
Louisiana	Bossier City
	Metairie
Maine	Orono
Maryland	Baltimore
Massachusetts	Allston (Boston area)
Michigan	Detroit
	Grand Rapids
	Saginaw
Minnesota	St. Paul
Mississippi	Jackson
Missouri	Kansas City
	St. Louis
Nebraska	Omaha
New Jersey	North Arlington
	Woodbridge
New York	Buffalo
	Latham (Albany area)
	Rochester
	Syracuse

STATE	CITY
North Carolina	Charlotte
	Raleigh
Ohio	Cincinnati
	Cleveland
	Toledo
Oklahoma	Oklahoma City
Oregon	Portland
Pennsylvania	Altoona
	Erie
	Harrisburg
	Hazleton
	Malvern
	Philadelphia
	Pittsburgh
Tennessee	Knoxville
	Memphis
Texas	Cleveland
	Dallas
	Houston
	Lufkin
	Silsbee
Utah	North Salt Lake
Virginia	Arlington
	Richmond
	Roanoke
Washington	Seattle
	Spokane
West Virginia	Charleston
	Clarksburg
Wisconsin	Milwaukee

DOMINION OF CANADA

TERRY MACHINERY CO., LTD.

Quebec	Montreal
Alberta	Edmonton
British Columbia	Vancouver

New Brunswick	Moncton
Ontario	Ottawa
	Toronto