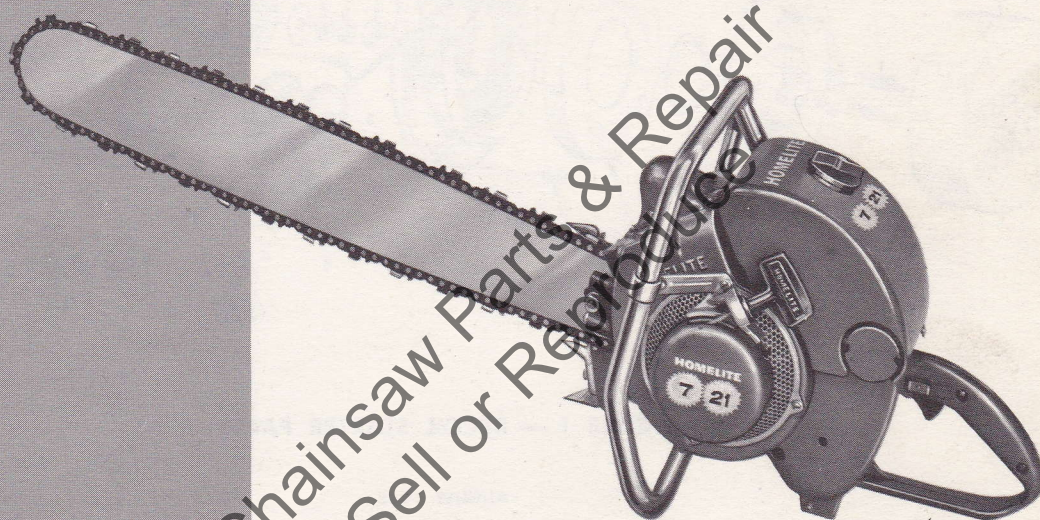


HOMELITE

Chain Saw

August 1958



Leon's Chainsaw Parts & Repair
Do Not Sell or Reproduce

PARTS LIST



Model 7-21

HOMELITE CHAIN SAW MODEL 7-21

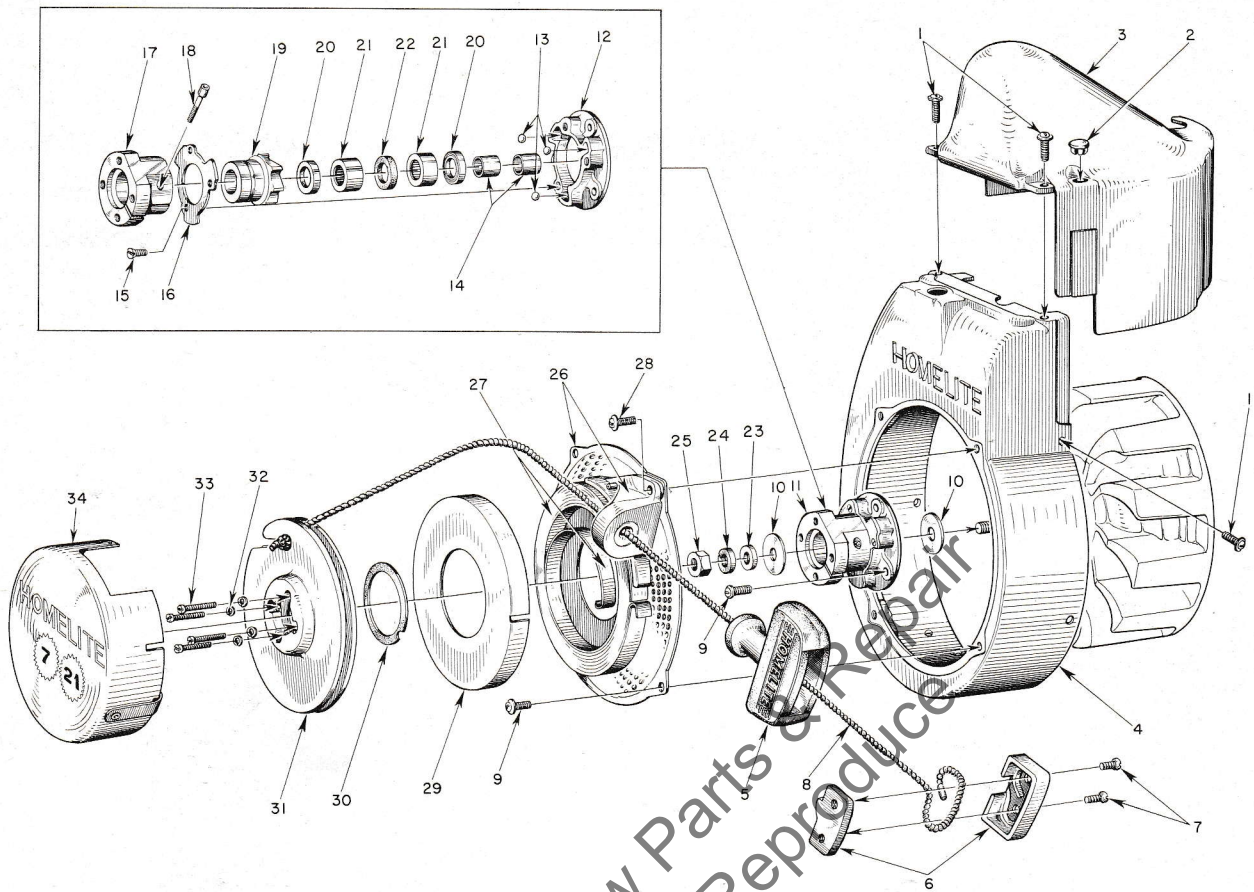


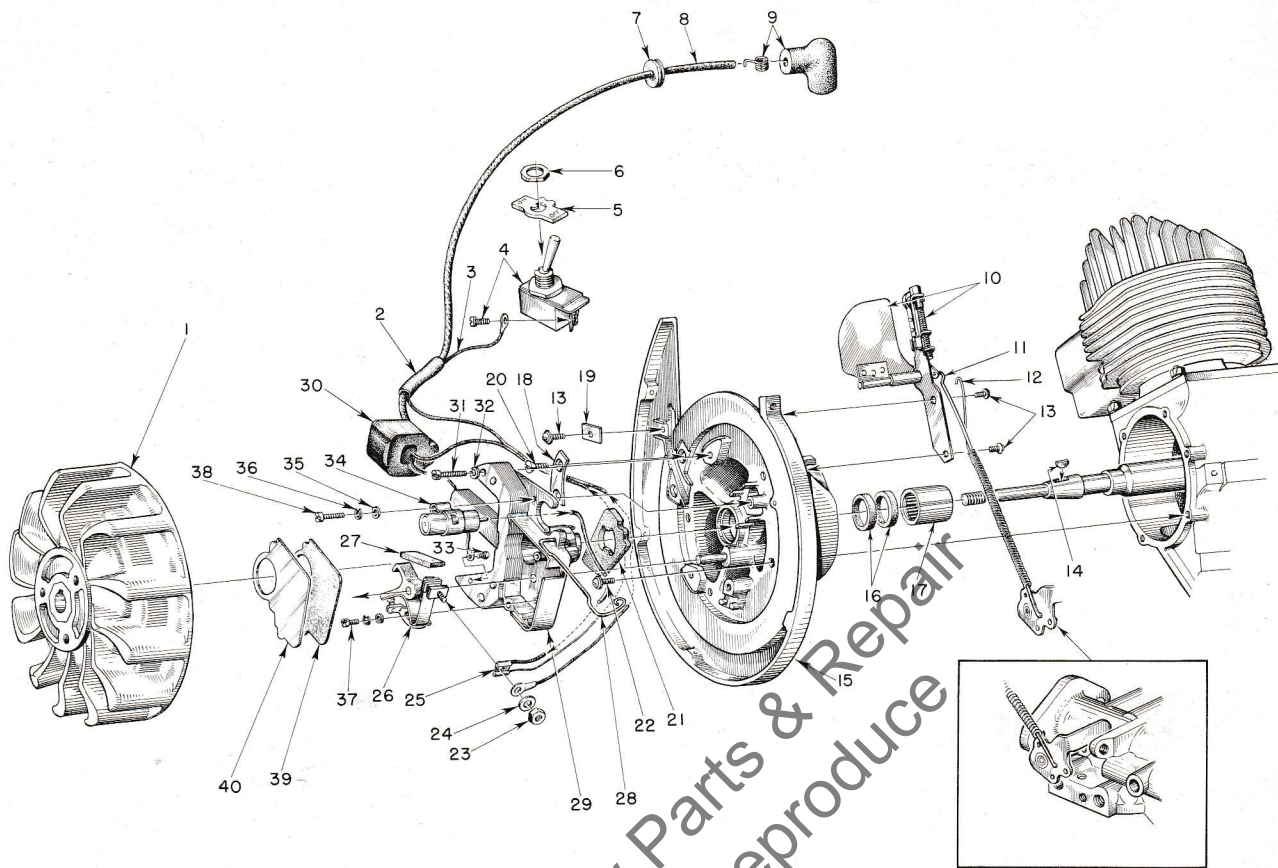
FIGURE 1 — RECOIL STARTER PARTS

AUGUST 1958

Index No.	Part No.	Description	No. Required
1	80577	SCREW — 8-32 x 3/8 pan hd.	6
2	32814	PLUG	1
3	55015-2	SHIELD — cylinder	1
4	A-56006	SHROUD — air, w/ inserts	1
5	55937	GRIP — starting	1
6	A-56081	INSERT — grip w/ cover	1
		Includes	
7	80619	SCREW	2
8	55898	ROPE — nylon	1
9	80579	SCREW — 10-32 x 3/8 pan hd.	6
10	55585	WASHER — thrust	2
11	A-56003	BALL DRIVE	
		Includes	
12	55054-A	PLATE — ball drive	1
13	55217	BALL — steel	3
14	55584	SLEEVE	2
15	80588	SCREW — 5-40 x 5/16 flat hd.	3
	A-56002	RATCHET & HUB	1
		Includes	
16	55097	RETAINER — ball	1
17	A-56166	HUB & SCREW	1
		Includes	
18	72295-A	SCREW — hub	1
	AA-55213	RATCHET & BEARING	1

Index No.	Part No.	Description	No. Required
		Includes	
19	A-55348	RATCHET — w/washer	1
		Includes	
	55271	WASHER — formica	1
20	55272	SEAL — garlock	2
21	55215	BEARING — needle	2
22	55214	FELT	1
23	84070	WASHER — 3/8 flat aluminum	1
24	83018	WASHER — 3/8 lock	1
25	81124	NUT — 3/8 hex	1
26	A-55998	SCREEN — air	1
		Includes	
	A-55999	BRACKET w/55363-A bushing	1
27	71470-A	SPRING — recoil	1
28	80576	SCREW — 10-32 x 1/8 pan hd. (through bracket)	1
29	71603	COVER — spring housing	1
30	71588	SHIM — plastic	as req'd.
31	AA-55223-A	PULLEY — w/pin	1
32	83004	WASHER — #6 lock	4
33	80475	SCREW — 6-32 x 3/4 fil. hd.	4
34	AA-73234-1	COVER — pulley	1
	56383	DECAL — "Homelite 7-21" (for pulley cover)	1

HOMELITE CHAIN SAW MODEL 7-21



Assemble Governor Arm into this hole in Throttle Stop Lever as indicated.

FIGURE 2 — IGNITION AND GOVERNOR PARTS

AUGUST 1958

Index No.	Part No.	Description	No. Required
1	55994	ROTOR	1
2	55290	SLEEVE—insulating	1
3	55990	LEAD—ground	1
4	AA-72094-A	SWITCH w/ screw	1
		Includes	
5	55879	PLATE (on-off)	1
6	72084-A1	NUT	1
7	60929	GROMMET	1
8	55235-A	LEAD—high tension	1
9	A-55373	TERMINAL (sparky)	1
10	A-55996	GOVERNOR	1
		Includes	
	84066	WASHER—governor arm burr	1
11	55943	ARM—governor	1
12	56179	SPRING	1
13	80575	SCREW—8-32 x 1/4 pan hd.	3
14	75078	KEY—rotor	1
15	A-56165	BACKPLATE w/pivot post	1
		Includes	
16	71597	SEAL—garlock	2
17	55204	BEARING—needle	1
18	55962	CLAMP—inner	1

Index No.	Part No.	Description	No. Required
19	55161	CLAMP—octer	1
20	80598	SCREW—6-32 x 5/16 flat hd.	2
21	55989	WASHER—sealing, felt	1
22	80576	SCREW—10-32 x 7/16 pan hd.	6
23	55982	NUT—terminal	1
24	55983	WASHER—terminal	1
25	*	TERMINAL—jam-tite	1
26	A-55971	POINTS—(set)	1
27	55984	WICK—felt	1
28	55980	CLAMP—dust cover	1
29	55969	BOX—breaker w/core	1
30	55986	COIL	1
31	80660	SCREW—10-24 x 7/8 fil. hd.	2
32	83046	WASHER—#10 lock	2
33	55977	SCREW	1
34	55987	CONDENSER w/terminal	1
35	84048	WASHER—flat	2
36	83060	WASHER—lock	2
37	55985	SCREW—8-32 x 3/8 fil. hd.	1
38	55988	SCREW	1
39	55978	GASKET—dust cover	1
40	55979	COVER—dust	1

* Not required for service. Replacement coils and condensers include terminals.

HOMELITE CHAIN SAW MODEL 7-21

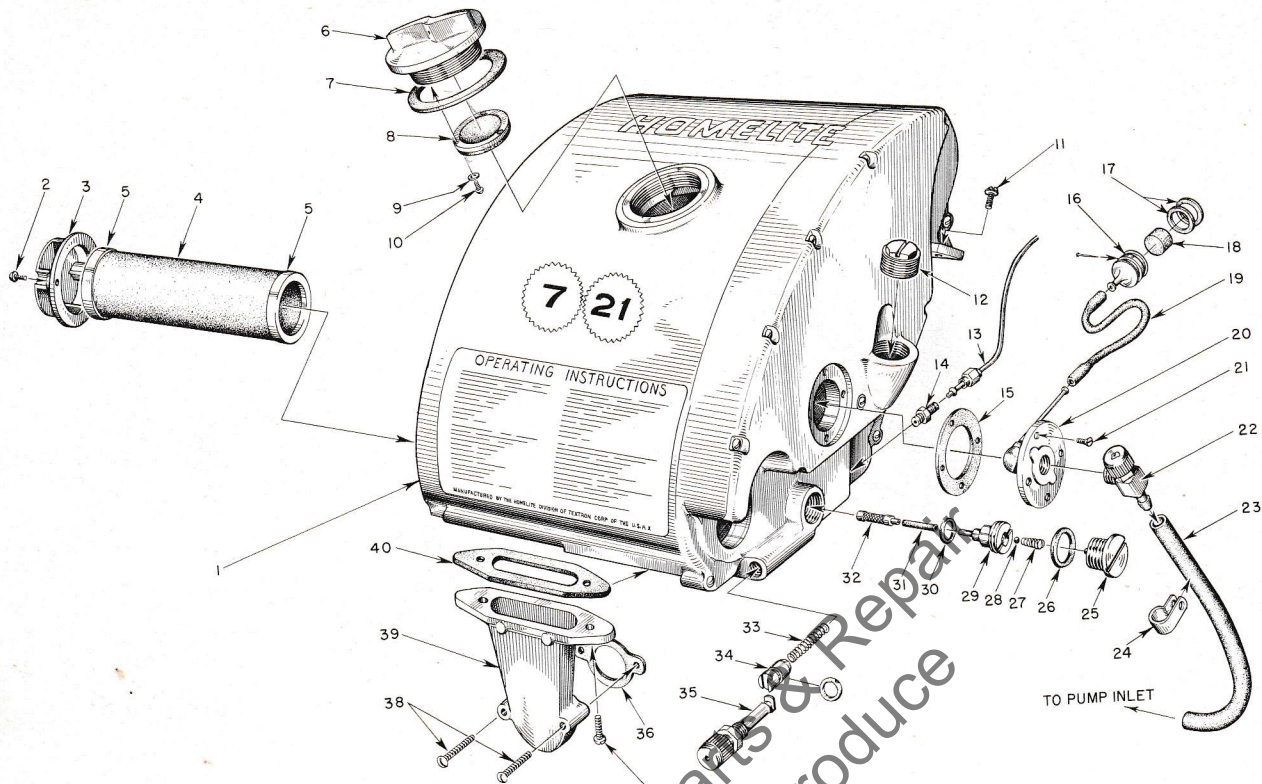


FIGURE 3 — FUEL TANK

AUGUST 1958

Index No.	Part No.	Description	No. Required	Index No.	Part No.	Description	No. Required
1	A-55830	FUEL TANK	1	18	74374	FILTER — felt	1
	56398	DECAL — "Homelite" (for fuel tank)	1	19	55805	SLEEVE — flexible	1
	55968-A	DECAL — "Instructions" (for fuel tank)	1	20	AA-72475	FITTING — fuel outlet	1
	56382	DECAL — "7-21" (for fuel tank)	1	21	80451	SCREW — 6-32 x 3/8 flat hd.	4
2	80571	SCREW — 6-32 x 3/8 pan hd.	2	22	55738	VALVE — shut-off	1
3	55494	CAP — air filter	1	23	A-56379	LINE — fuel	1
4	A-55533	FILTER — air	1	24	56014	CLIP — fuel line, nylon	1
		Includes		25	AA-55167	CAP — oil supply line	1
5	55532	GASKET (cemented to filter)	2	26	55107	GASKET	1
6	A-55305	CAP — fuel	1	27	55288-A	SPRING — check valve	1
		Includes		28	25527	BALL — check	1
7	72173	GASKET	1	29	55109-A	SEAT — check ball	1
8	A-55301-B	VALVE — relief	1	30	55110	GASKET	1
9	83083	WASHER — #3 lock	3	31	55133-A	SLEEVE — flexible	1
10	80592	SCREW — 3-48 x 1/4 rd. hd.	3	32	AA-55259-A	PICK-UP — oil	1
11	80582	SCREW — 8-32 x 3/8 pan hd.	1	33	71762	SPRING — plunger	1
12	55140-A	CAP — oil filler	1	34	A-74406	TUBE — plunger (includes 74388 "O" ring)	1
13	AA-55191	LINE — oil	1	35	71764	BUTTON — plunger	1
14	A-55824	VALVE — check	1	36	72971-1	GASKET — air elbow	1
15	72174	GASKET	1	37	80572	SCREW — 10-32 x 3/8 pan hd.	2
16	A-56200	BODY — fuel strainer, w/brass nail	1	38	80624	SCREW — 10-32 x 1 pan hd.	2
		Includes		39	55019-3	ADAPTER — air filter	1
17	56196	BUMPER — rubber	2	40	55059	GASKET — adapter	1

HOMELITE CHAIN SAW MODEL 7-21

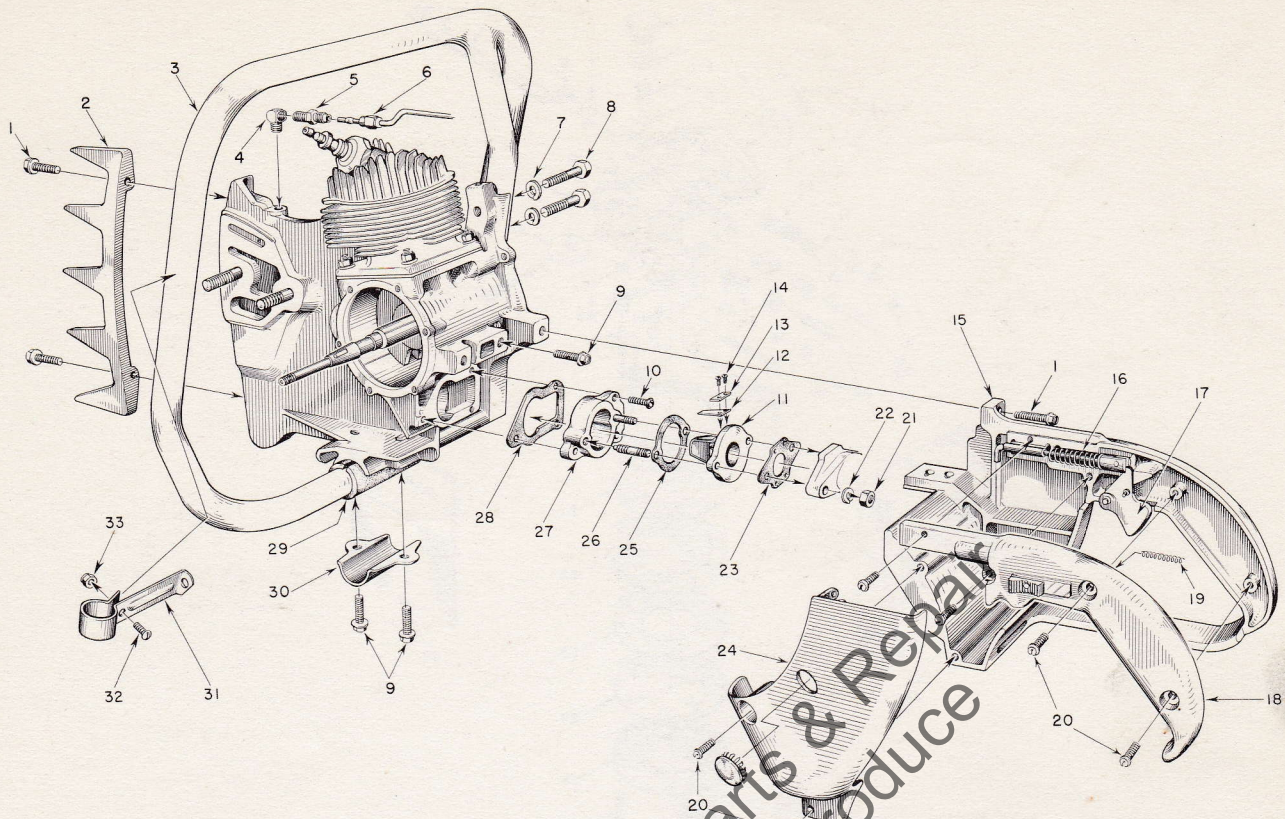


FIGURE 4 — HANDLE, GRIP AND REED VALVE PARTS

AUGUST 1958

Index No.	Part No.	Description	No. Required
1	80573	SCREW — 1/4-20 x 1 3/16 hex hd.	5
2	55103	PLATE — bumper	1
3	A-56065	HANDLE — flush cut (7-21)	1
	A-56064	HANDLE — wrap around (7-21A)	1
4	31734	ELBOW — connector	1
5	31733-1	ADAPTER — straight	1
6	AA-55191	LINE — chain oil	1
7	83003	WASHER — 5/16 lock	2
8	80087	SCREW — 3/16-18 x 1 1/2 hex hd.	2
9	80581	SCREW — 1/4-20 x 5/8 hex hd.	4
10	80583	SCREW — 10-32 x 3/4 pan hd.	3
11	55932	ADAPTER — reed valve	1
12	55941	REED	4
13	55942	PLATE — reed	4
14	80658	SCREW — 4-40 x 3/16 pan hd.	8
15	AA-55281	GRIP — pistol w/pin and 55372 felt	1
16	A-55954	ROD — throttle	1
		Includes	
	55045-A	SPRING	1
17	AA-55207	TRIGGER — throttle	1

Index No.	Part No.	Description	No. Required	
18	AA-55228	COVER — pistol grip	1	
		Includes		
	AA-55282	LOCK — throttle	1	
		Includes		
	19	72970	SPRING — lock	1
20	80560	SCREW — 8-32 x 1/2 pan hd.	6	
21	81013	NUT — 1/4-20 hex	2	
22	83009	WASHER — 1/4 lock	2	
23	55553	GASKET — carburetor	1	
24	55104-1	SHIELD — carburetor	1	
	29187	PLUG — button	1	
25	55946	GASKET — spacer -adapter	1	
26	55945	STUD	2	
27	55933	SPACER — reed adapter	1	
28	55116	GASKET	1	
29	55146	CUSHION — handle	1	
30	55145	CLAMP — handle	1	
31	A-56167	BRACE — handle	1	
		Includes		
	32	80578	SCREW — 10-32 x 7/16	1
	33	81109	NUT — 10-32 lock	1

HOMELITE CHAIN SAW MODEL 7-21

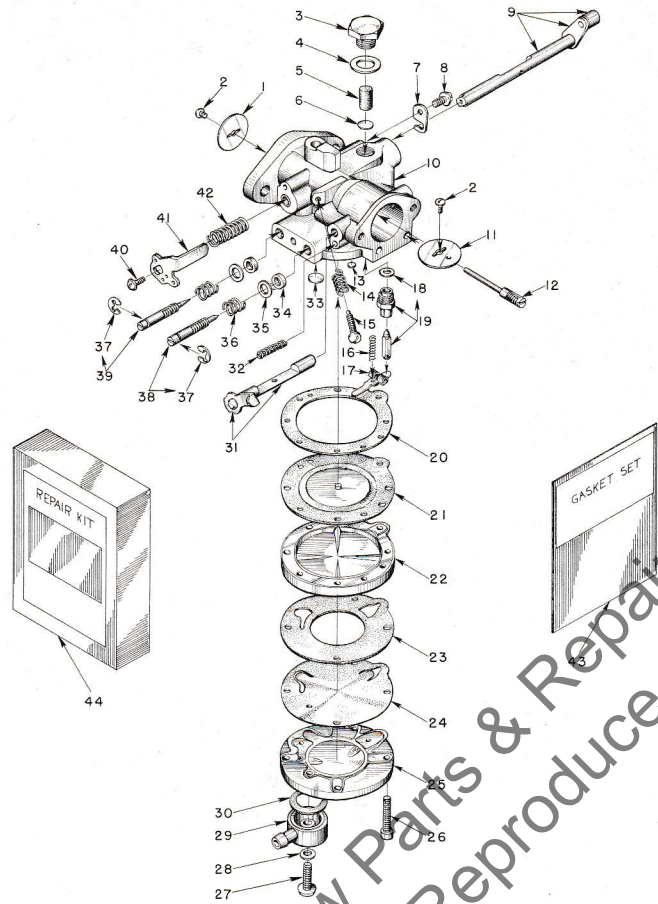


FIGURE 5 — BROWN 1-CP CARBURETOR PARTS

AUGUST 1958

Index No.	Part No.	Description	No. Required	Index No.	Part No.	Description	No. Required
	A-56505	CARBURETOR MODEL 1-CP	1	22	77301	COVER — main diaphragm	1
		Includes		23	*77305	GASKET — pump body	1
1	74980	SHUTTER — throttle	1	24	*77304	DIAPHRAGM — pump	1
2	77044	SCREW — shutter, 4-40 x 1/8 rd. hd.	2	25	77316	BODY — fuel pump	1
3	†77306	SCREW — plug	1	26	77160	SCREW — body, 6-32 x 3/4 fil. hd.	4
4	*77307	GASKET — plug screw	1	27	77320	SCREW — fuel connection	1
5	†77308	FILTER — felt	1	28	*74997	GASKET — fibre	1
6	†77317	SCREEN — filter	1	29	77318	TURRET — fuel inlet connection	1
7	†74981	CLIP — throttle shaft	1	30	*77319	GASKET — inlet connection	1
8	†77041	SCREW — throttle clip, 6-32 x 1/4 pan hd.	1	31	A-77322	SHAFT & LEVER — choke	1
9	A-77253	SHAFT — throttle	1	32	77311	SPRING — choke friction	1
10	A-77321	BODY — service	1	33	†74977	PLUG — Welch (large)	1
11	74991	SHUTTER — choke	1	34	*77007	RING — square	2
12	†77014	PIN — fulcrum	1	35	†77006	WASHER — adjustment packing	2
13	†77309	PLUG — Welch (main nozzle)	1	36	†77005	SPRING — adjustment compression	2
14	77010	SPRING — idle speed screw	1	37	77004	CLIP — spring retaining	2
15	77040	SCREW — idle speed, 6-32 x 9/16 rd. hd.	1	38	†A-77328	SCREW — main adjusting, w/77004 clip	1
16	†77015	SPRING — diaphragm lever tension	1	39	†A-77251	SCREW — idle adjusting w/77004 clip	1
17	†77016	LEVER — diaphragm	1	40	†77042	SCREW — idle stop	1
18	*77346	GASKET — copper	1	41	77247	LEVER — throttle stop	1
19	†A-77327	NEEDLE & SEAT — inlet w/gasket	1	42	†77313	SPRING — throttle friction	1
20	*77303	GASKET — main diaphragm	1	43	†77336	GASKET Set (GS-152)	1
21	*A-77323	DIAPHRAGM — main	1	44	77337	Repair Parts Kit (RK-155)	1

*Included in GS-152 Gasket Set

†Included in RK-155 Repair Kit

HOMELITE CHAIN SAW MODEL 7-21

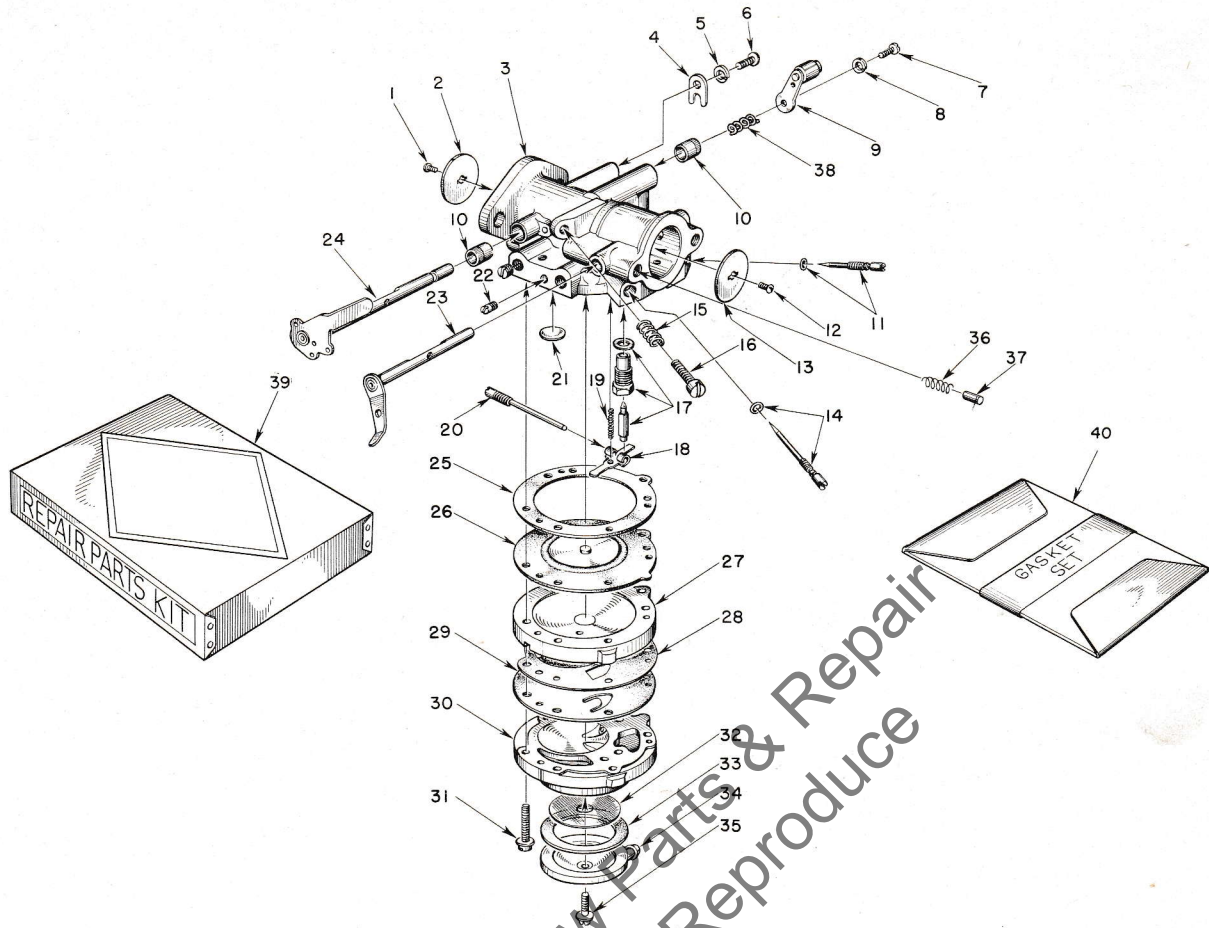


FIGURE 6 — TILLOTSON HL-27B CARBURETOR PARTS

AUGUST 1958

Index No.	Part No.	Description	No. Required	Index No.	Part No.	Description	No. Required
	A-56066	CARBURETOR—Till. Model HL-27B	1	18	*55747	LEVER—inlet control	1
		Includes		19	*55759	SPRING—control lever	1
1	*80012	SCREW—throttle shutter	1	20	*A-55762	SCREW—pinion	1
2	73272	SHUTTER—throttle	1	21	30818	PLUG	1
3	A-75533	BODY—service	1	22	73067	PLUG—drain	1
4	73086	CLIP—throttle shaft	1		71505	PLUG	2
5	83000	WASHER—lock #8	1	23	A-55766	LEVER—choke	1
6	73088	SCREW—8-32 x 9/16 flat hd.	1	24	A-75624	SHAFT—throttle, w/stop lever	1
7	*71521	SCREW—4-36 x 1/4 rd. hd.	1	25	55754	GASKET—main diaphragm	1
8	*83008	WASHER—lock #4	1	26	*A-55760	DIAPHRAGM—main	1
9	A-75528	LEVER and ROLLER—throttle	1	27	55749	COVER—main diaphragm	1
10	72812	BUSHING—throttle shaft	2	28	55881	GASKET—pump diaphragm	1
11	*A-75527	SCREW—main adjust. (hi speed)	1	29	*55753	DIAPHRAGM—pump	1
		Includes		30	55748	BODY—pump	1
	55764	"O"—ring	1	31	*55316	SCREW and WASHER	6
12	*80012	SCREW—choke shutter (same as No. 1)	1	32	55752	SCREEN—fuel strainer	1
13	73263	SHUTTER—choke	1	33	55751	GASKET—pump cover	1
14	*A-75530	SCREW—idle adjust. (lo speed)	1	34	55750	COVER—pump	1
		Includes		35	55756	SCREW—retaining	1
	55764	"O"—ring	1	36	73264	SPRING—choke friction pin	1
15	*28064	SPRING—idle stop screw	1	37	71494	PIN—choke friction	1
16	*71509	SCREW—idle stop (speed control)	1	38	56175	SPRING	1
17	*A-55761	INLET NEEDLE and SEAT	1	39	75623	REPAIR PARTS KIT (RK-357)	1
		Includes		40	*55836	GASKET SET (GS-122)	1
	55344	GASKET—inlet seat	1				

* Included in Repair Parts Kit (RK-357)

HOMELITE CHAIN SAW MODEL 7-21

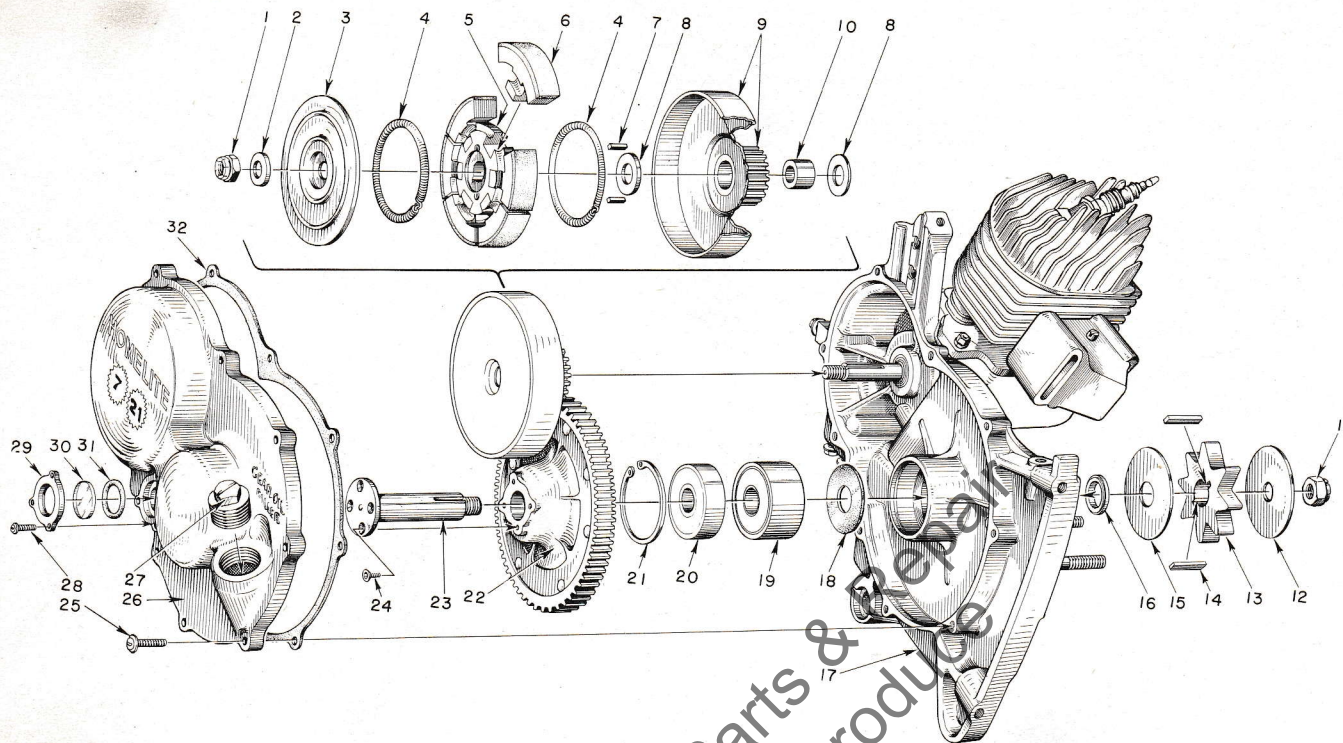


FIGURE 7 — GEAR CASE AND SPROCKET PARTS

AUGUST 1958

Index No.	Part No.	Description	No. Required
1	81116	NUT— $\frac{3}{8}$ -24 flex-lock	1
2	55036	WASHER—clutch	1
3	55126	COVER—clutch	1
	A-56139	CLUTCH	1
		Includes	
4	55123-A	SPRING	2
5	55075-1	SPIDER	1
6	A-55692	SHOE	6
7	55225	KEY—clutch	2
8	56132	WASHER—thrust	2
9	†A-56158	CLUTCH DRUM (and drive gear)	1
10	56133	BEARING—drive gear	1
11	81101	NUT— $\frac{1}{2}$ -20 flex-lock	1
12	56077	WASHER—sprocket (outer)	1
13	55593-2	SPROCKET	1
14	56076	KEY—sprocket	2
15	56074	WASHER—sprocket (inner)	1
16	56071	SPACER—sprocket	1

Index No.	Part No.	Description	No. Required
17	*	CRANKCASE	1
18	56072	SEAL—formica	1
19	56073	BEARING—roller	1
20	72040	BEARING—ball	1
21	28922	RING—retaining	1
22	‡A-56154	DRIVEN GEAR	1
23	56070	SHAFT—sprocket	1
24	80651	SCREW—12-28 x $\frac{3}{8}$ flt hd., socket	4
25	80572	SCREW—10-32 x $\frac{5}{8}$ pan hd.	9
26	AA-55226-A	COVER—gear case	1
		Includes	
27	55140-A	PLUG—oil filler	1
28	80571	SCREW—6-32 x $\frac{3}{8}$ pan hd.	3
29	55098	PLATE—window	1
30	55099	WINDOW—plastic	1
31	55100	GASKET—"O" ring	1
	56383	DECAL—"Homelite 7-21" (for gear case cover)	1
32	55053-A	GASKET—gearcase cover	1

* A-56207—for breakdown see Figure 8 Engine Assembly

† For 3.57: 1 ratio, order A-56135

‡ For 3.57: 1 ratio, order AA-55068-2

HOMELITE CHAIN SAW MODEL 7-21

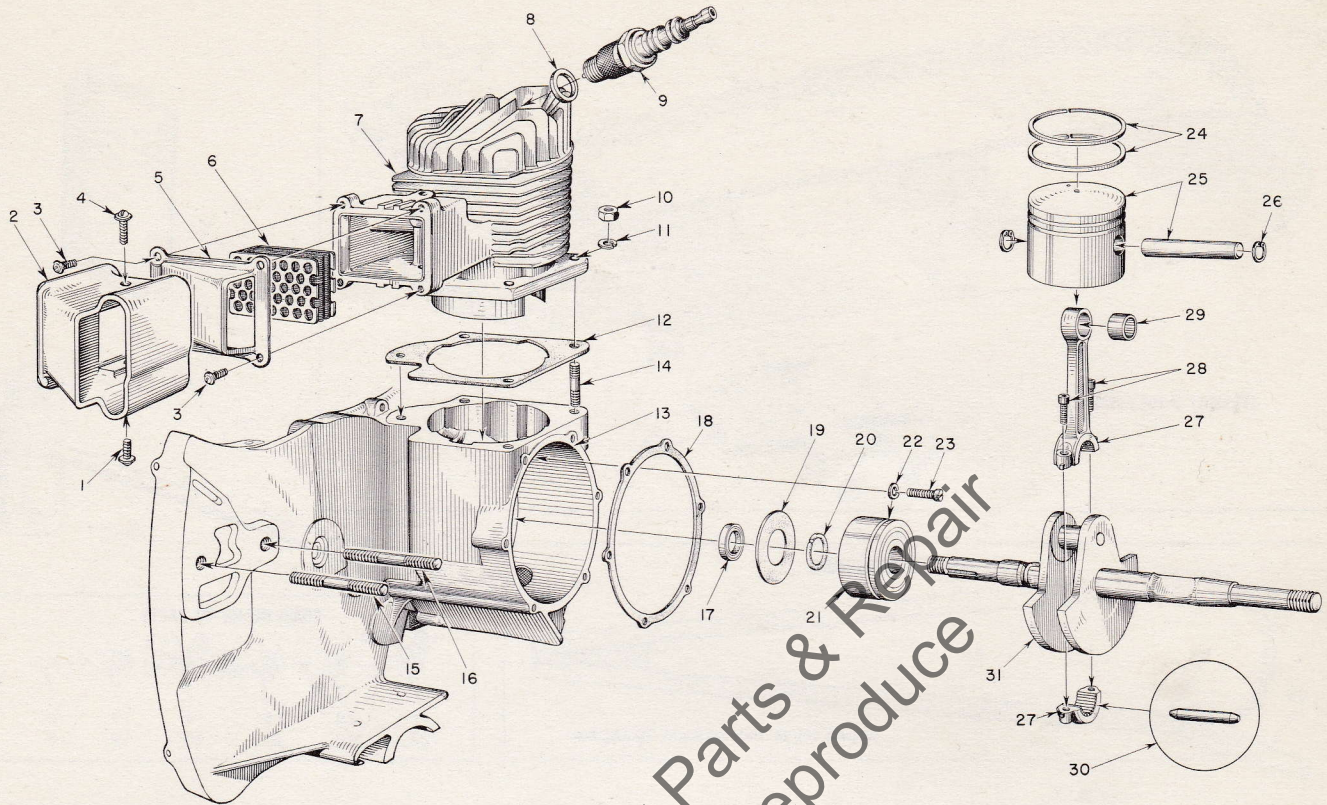


FIGURE 8—ENGINE ASSEMBLY

AUGUST 1958

Index No.	Part No.	Description	No. Required
1	80625	SCREW—10-32 x 1/2 pan hd.	1
2	55506-1	DAMPER	1
3	80630	SCREW—6-32 x 1/2 pan hd.	4
4	80583	SCREW—10-32 x 3/4 pan hd.	1
5	55507	CAP—exhaust	1
6	A-56068	ELEMENT—muffler	1
7	56182	CYLINDER	1
8	25038	GASKET (included with spark plug)	1
9	71530	SPARK PLUG—Champion HO-8A	1
10	81065-2	NUT—1/4-28 hex	4
11	83009	WASHER—1/4 lock	4
12	55050-A	GASKET—cylinder	1
13	A-56207	CRANKCASE	1
		Includes	
14	55871	STUD	4
	28097	PLUG—pipe 1/8	1
15	55606	STUD—guide bar (long)	1
16	55056-D	STUD—guide bar (short)	1

Index No.	Part No.	Description	No. Required
17	56134	SEAL—garlock	1
18	55049	GASKET—back plate	1
19	55048-A	GASKET—crankcase sealing	1
20	56109	RING—bearing retaining	1
21	56097	BEARING—main	1
22	83061	WASHER—lock, special thin	2
23	19238-A	SCREW—main bearing retaining	2
24	55537	RING—piston	2
25	A-55599	PISTON and PIN	1
		Includes	
26	55095	RING—piston pin retaining	2
27	AA-55195	CONNECTING ROD	1
		Includes	
28	80541	SCREW—8-32 x 1/2 allen cap	2
29	55196	BEARING—piston pin	1
30	AA-55280	ROLLERS (set of 27 needles)	1
31	56131-A	CRANKSHAFT	1

Always furnish saw model and serial number when ordering parts

HOMELITE CHAIN SAW MODEL 7-21

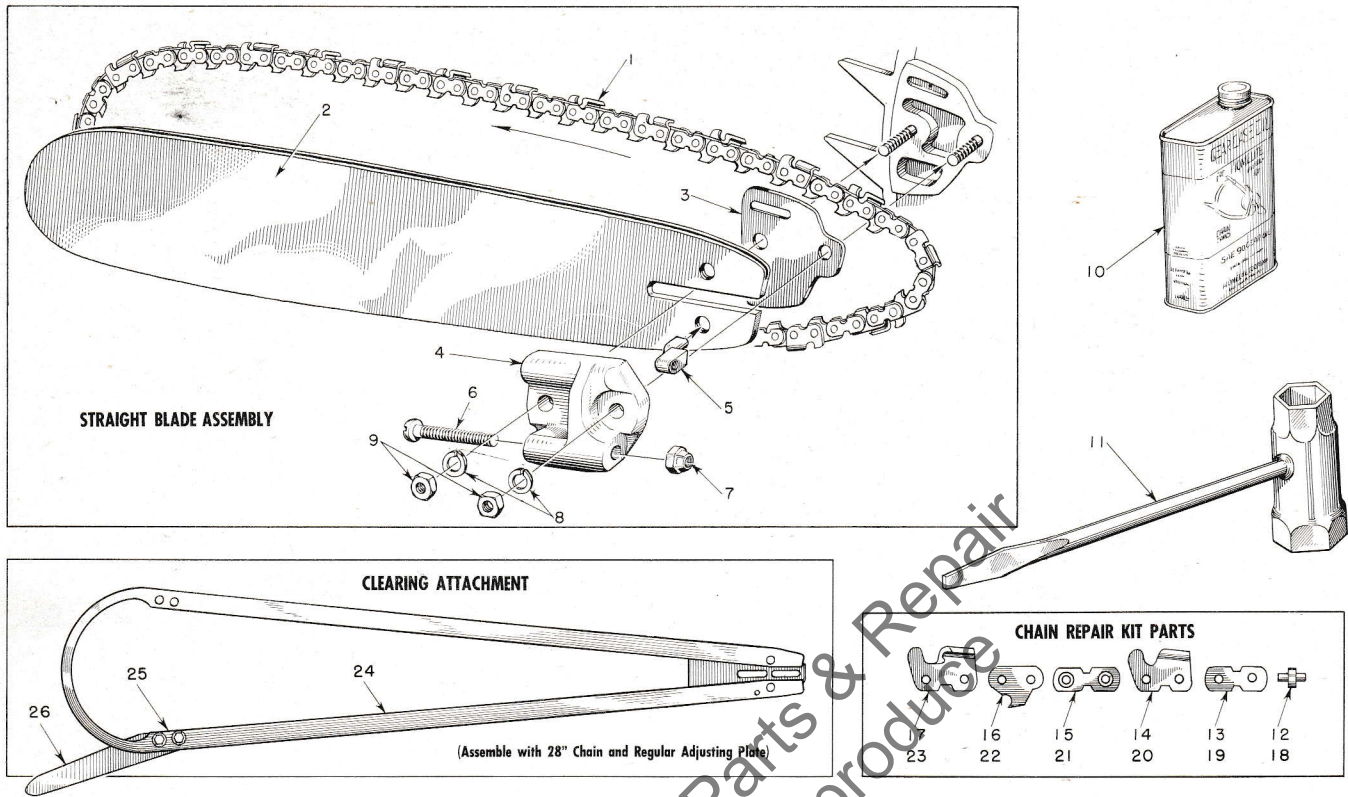


FIGURE 9 — SAW PARTS

AUGUST 1958

Index No.	Part No.	Description	No. Required	Index No.	Part No.	Description	No. Required
		OREGON #10C 1/2 PITCH CHAIN		3	55128	SHIM	1
1	A-55338	14" CHAIN—(with kit)	1		A-55591	ADJUSTING PLATE	1
	AA-73338	18" CHAIN—(with kit)	1			Includes	
	A-55319	20" CHAIN—(with kit)	1	4	55551-B	PLATE—adjusting	1
	*AA-73340	23" CHAIN—(with kit)	1	5	55552	PIN—guide bar adjusting	1
	*AA-73342	28" CHAIN—(with kit)	1	6	80617	SCREW—5/16-18 x 2 round hd.	1
	AA-73344	33" CHAIN—(with kit)	1	7	81123	NUT—hex lock	1
	AA-73346	38" CHAIN—(with kit)	1	8	83018	WASHER—lock	2
	AA-73350	44" CHAIN—(with kit)	1	9	81089	NUT—3/8-16 hex	2
	AA-73597	50" CHAIN—(with kit)	1	10	55291-A	OIL—gear (pint can SAE-90)	1
	AA-73598	60" CHAIN—(with kit)	1	11	22808	WRENCH—combination	2
		ATKINS #163 CT 1/2 PITCH CHAMFERED CHAIN			AA-73314	REPAIR KIT—OREGON #10C CHAIN	
	A-51586	14" CHAIN—(with kit)	1			Includes	
	A-51587	18" CHAIN—(with kit)	1	12	72959	RIVET	4
	A-51588	20" CHAIN—(with kit)	1	13	72960	LINK—connecting (plain)	2
	*A-51589	23" CHAIN—(with kit)	1	14	72964	CUTTER—left	1
	*A-51590	28" CHAIN—(with kit)	1	15	AA-72961	LINK—connecting (w/rivets)	2
	A-51591	33" CHAIN—(with kit)	1	16	73383	LINK—drive	1
	A-51592	38" CHAIN—(with kit)	1	17	72963	CUTTER—right	1
	A-51593	44" CHAIN—(with kit)	1		A-51578	REPAIR KIT—ATKINS #163 CT CHAIN	
	A-51594	50" CHAIN—(with kit)	1			Includes	
	A-51595	60" CHAIN—(with kit)	1	18	51585	RIVET	4
2	A-55714	14" BAR—.063	1	19	51580	LINK—connecting (plain)	2
	A-55718	18" BAR—hard track plus extra hard tip .063	1	20	51582	CUTTER—left	1
	A-55720	20" BAR—hard track plus extra hard tip .063	1	21	A-51583	LINK—connecting (w/rivets)	2
	A-55723	23" BAR—hard track plus extra hard tip .063	1	22	51579	LINK—drive	1
	A-55728	28" BAR—hard track plus extra hard tip .063	1	23	51581	CUTTER—right	1
	55704-1	33" BAR—extra hard tip .063	1	24	A-56169	CLEARING ATTACHMENT	1
	55705-1	38" BAR—extra hard tip .063	1			Includes	
	55706-1	44" BAR—extra hard tip .063	1	25	80604	Screw—hex hd. 5/16-24 x 3/4	2
	55707-1	50" BAR—extra hard tip .063	1	26	73820	SPUR—plunging	1
	55708-1	60" BAR—extra hard tip .063	1				

* Also fits 14" bow attachment.

** Also fits clearing attachment.

HOMELITE CHAIN SAW MODEL 7-21

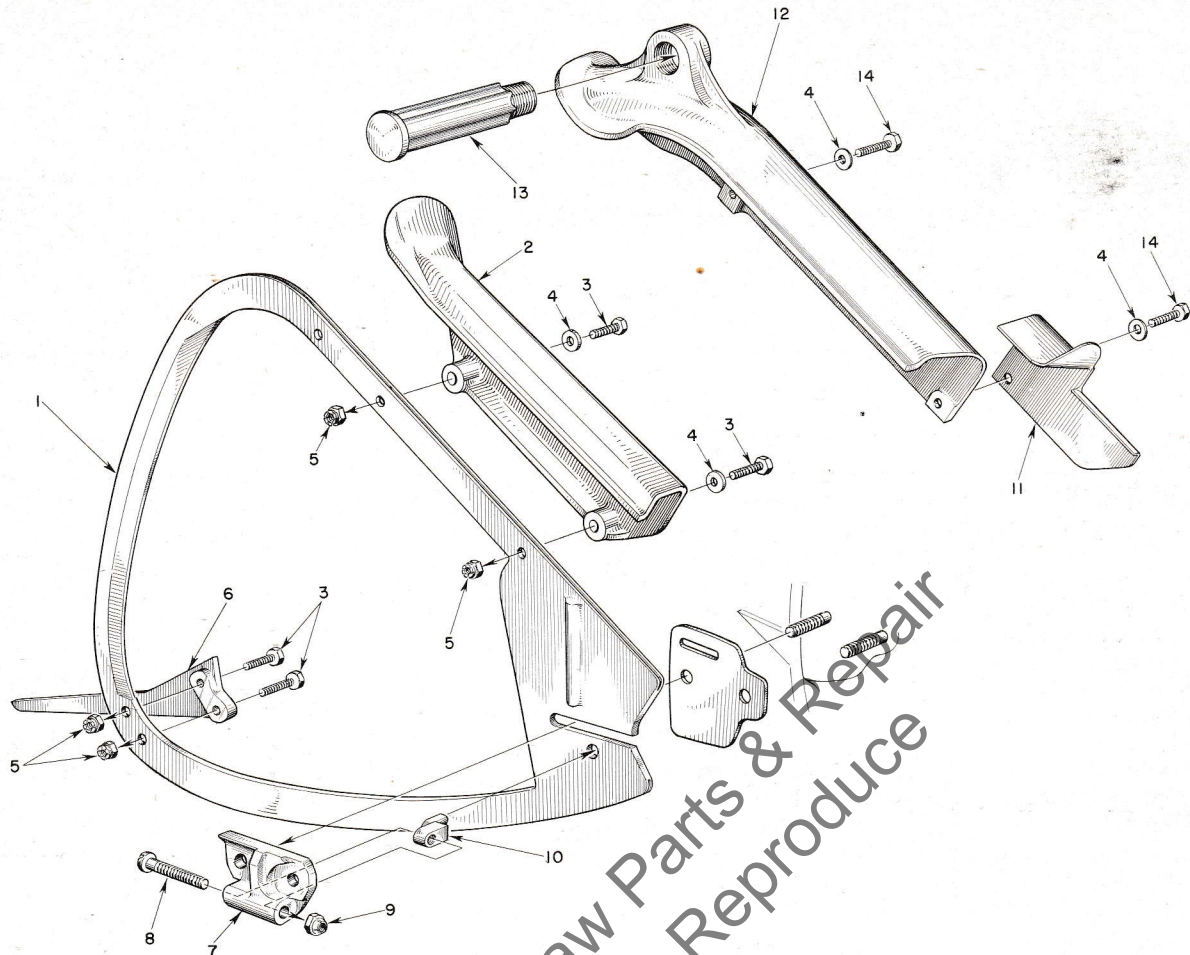


FIGURE 10 — PLUNGE CUT BOW ATTACHMENTS

AUGUST 1958

Index No.	Part No.	Description	No. Required
NOTE: Use left hand column parts list for SHORT GUARD MODEL Bow Attachment.			
1	*55921	14" GUIDE—chain	1
	A-56192	KIT—bow mounting (w/short guard)	1
		Includes	
2	55948	GUARD—short	1
3	80546	SCREW— $\frac{5}{16}$ -24 x $1\frac{1}{4}$ hex	4
4	84001	WASHER— $\frac{5}{16}$ flat	2
5	81112	NUT— $\frac{5}{16}$ -24 hex lock	4
6	72784	SPUR	1
7	A-55591-1	ADJUSTING PLATE (bow)	1
		Includes	
8	80617	SCREW—tension adjusting	1
9	81123	NUT	1
10	55552	PIN	1

Index No.	Part No.	Description	No. Required
NOTE: Use right hand column parts list for LONG GUARD MODEL Attachment with side handle.			
1	*55921	14" GUIDE—chain	1
	A-55955	KIT—bow mounting (w/side handle)	1
		Includes	
3	80546	SCREW— $\frac{5}{16}$ -24 x $1\frac{1}{4}$ hex head	2
4	84001	WASHER— $\frac{5}{16}$ flat	2
5	81112	NUT— $\frac{5}{16}$ -24 hex lock	4
6	72784	SPUR	1
7	A-55591-1	ADJUSTING PLATE (bow)	1
		Includes	
8	80617	SCREW—tension adjusting	1
9	81123	NUT	1
10	55552	PIN	1
11	55297	GUARD	1
12	72778	GUARD (for side handle)	1
13	72226	HANDLE—side	1
14	80559	SCREW— $\frac{5}{16}$ -24 x $1\frac{1}{2}$ hex head	2

*Use 23" chain

HOMELITE

Authorized Sales and Service Branches

Listed below, by states, are the addresses of Homelite Factory branch offices. Each branch office carries a complete stock of Homelite repair parts. Factory-trained mechanics and special factory tools assure expert repair service on all Homelite carryable products. For prompt service, go to the nearest branch listed below.

STATE	CITY	STATE	CITY
Alabama	Birmingham	North Carolina	Charlotte
California	Alhambra		Raleigh
	Fresno	Ohio	Cincinnati
	Sacramento		Cleveland
	S. San Francisco		Toledo
Colorado	Denver	Oklahoma	Oklahoma City
Connecticut	Byram (Port Chester)	Oregon	Portland
	Hartford	Pennsylvania	Altoona
Florida	Jacksonville		Erie
	Miami		Harrisburg
Georgia	Atlanta		Hazleton
Illinois	Bloomington		Malvern
	Springfield		Philadelphia
	Stone Park (Chicago)		Pittsburgh
Indiana	Indianapolis	Tennessee	Knoxville
Louisiana	Bossier City		Memphis
	Metairie	Texas	Cleveland
Maine	Orono		Dallas
Maryland	Baltimore		Houston
Massachusetts	Allston (Boston area)		Lufkin
Michigan	Detroit		Silsbee
	Escanaba	Utah	North Salt Lake
	Grand Rapids	Virginia	Arlington
	Saginaw		Richmond
Minnesota	St. Paul		Roanoke
Mississippi	Jackson	Washington	Seattle
Missouri	Kansas City		Spokane
	St. Louis	West Virginia	Charleston
Nebraska	Omaha		Clarksburg
New Jersey	North Arlington	Wisconsin	Milwaukee
	Woodbridge		
New York	Buffalo		
	Latham (Albany area)		
	Rochester		
	Syracuse		

DOMINION OF CANADA

TERRY MACHINERY CO., LTD.

Quebec	Montreal	New Brunswick	Moncton
Alberta	Edmonton	Ontario	Ottawa
British Columbia	Vancouver		Toronto

Homelite sales and service factory branches are located throughout the country. Field representatives and factory-trained servicemen are always available, ready and able to keep your Homelites running in top performance at all times. See the "Yellow Pages" for the address and phone number of your nearest Homelite Branch office.