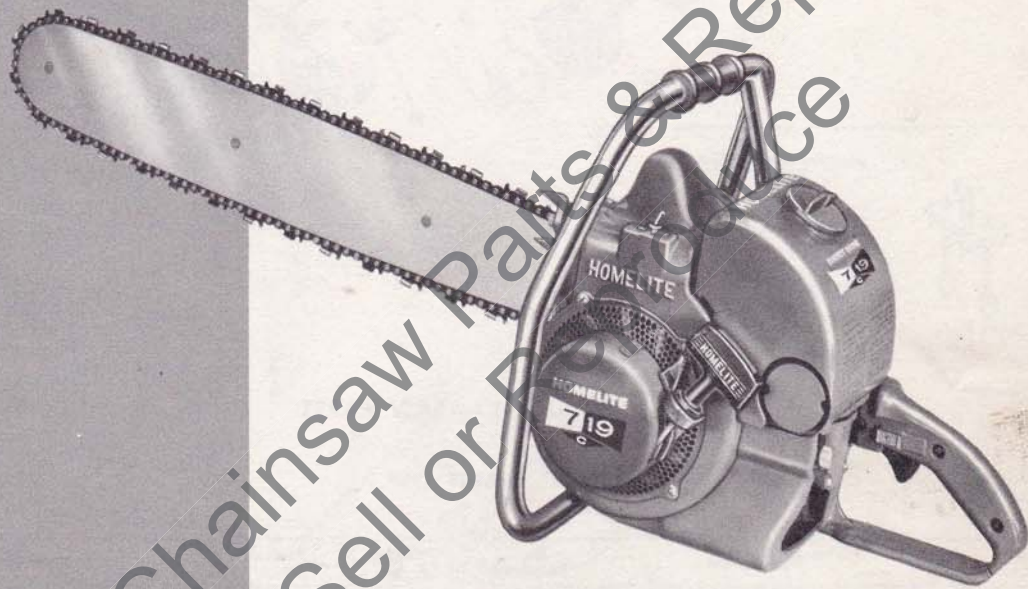


# HOMELITE

## Chain Saw

March 1959



### PARTS LIST



Model 7-19C

# HOMELITE CHAIN SAW MODEL 7-19C

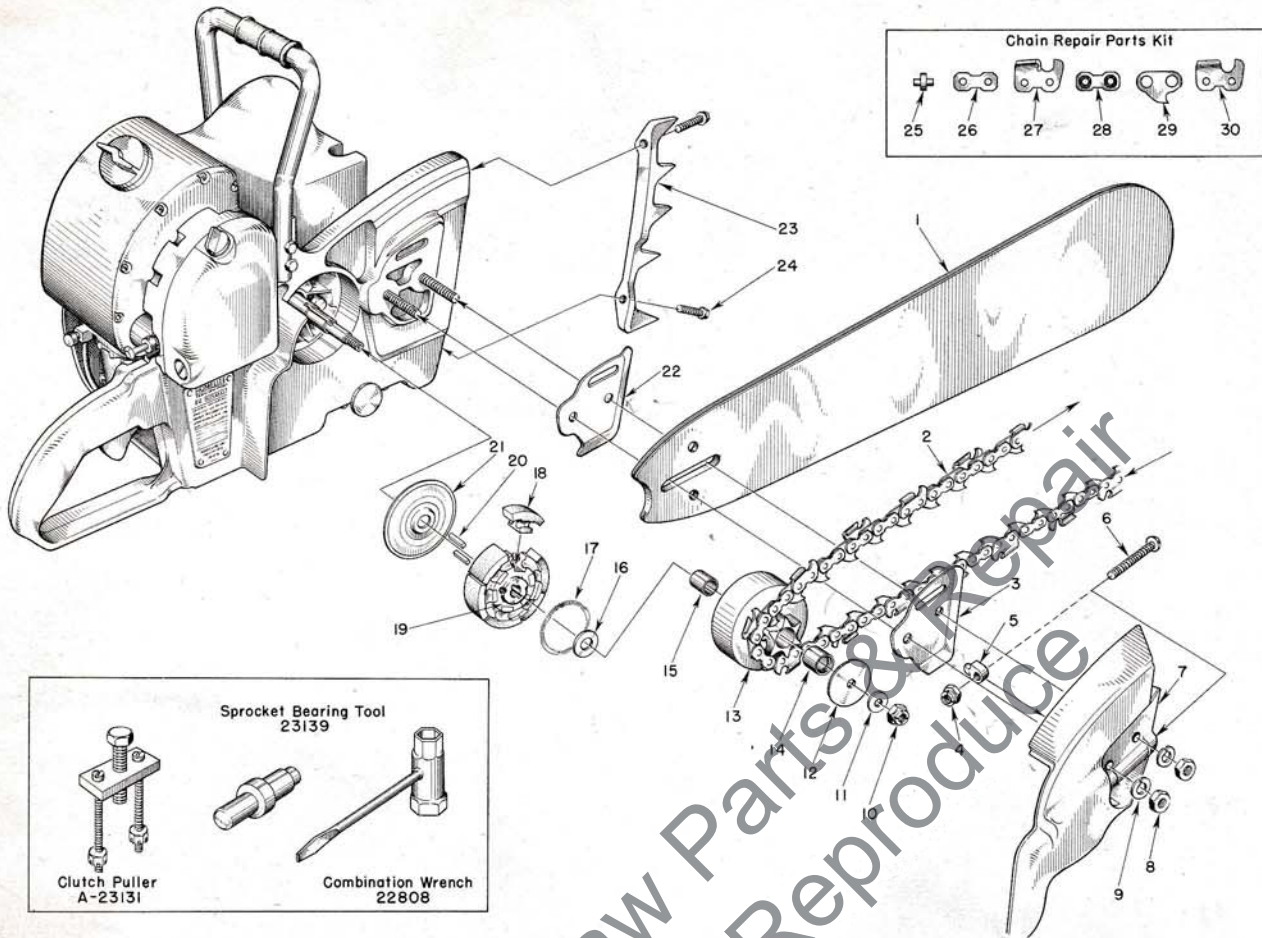


FIGURE 1 — SAW PARTS

MARCH 1959

Index No.	Part No.	Description	No. Required	Index No.	Part No.	Description	No. Required
1	A-51545	12" BAR — extra hard tip — hard track.....	1	13	A-56377	SPROCKET and DRUM (for 7/16 pitch chain)....	1
	A-51517	17" BAR — extra hard tip — hard track.....	1	14	55664	BEARING — needle (included in A-55662)	1
	A-51521	21" BAR — extra hard tip — hard track.....	1	15	55661	RACE — inner.....	1
	A-51525	25" BAR — extra hard tip — hard track.....	1	16	55660	WASHER — thrust.....	1
	A-51539	30" BAR — extra hard tip — hard track.....	1		A-56100	CLUTCH .....	1
		OREGON #62C 7/16 PITCH — CHIPPER CHAIN				Includes	
2	A-51542	12" CHAIN — (with kit).....	1	17	55123-A	SPRING — clutch.....	2
	A-51535	17" CHAIN — (with kit).....	1	18	55076-1	SHOE — clutch.....	6
	A-51536	21" CHAIN — (with kit).....	1	19	55075-1	SPIDER — clutch.....	1
	A-51537	25" CHAIN — (with kit).....	1	20	55225	KEY .....	2
	A-51540	30" CHAIN — (with kit).....	1	21	56101	COVER — clutch.....	1
3	55667	PLATE — guide bar, outer.....	1	22	55666	PLATE — guide bar, inner.....	1
	A-55668	COVER — drive case .....	1	23	55632	PLATE — spiked bumper.....	1
		Includes		24	80573	SCREW — 1/4-20 x 1 1/16 hex. hd.....	2
4	81123	NUT — hex lock.....	1		A-51529	REPAIR KIT — OREGON #62C chain.....	1
5	55613	PIN — guide bar adjusting.....	1			Includes	
6	80617	SCREW — 5/16-18 x 2 rd. hd.....	1	25	51518	RIVET .....	4
7	*	COVER .....	1	26	A-51528	LINK — connecting (w/rivets).....	2
8	81089	NUT — 3/8-16 hex.....	2	27	51527	CUTTER — left.....	1
9	83018	WASHER — lock.....	2	28	51519	LINK — connecting (plain).....	2
10	81116	NUT — 3/8-24 flex-lock.....	1	29	51520	LINK — drive.....	1
11	84010	WASHER — 3/8 flat.....	1	30	51526	CUTTER — right.....	1
12	55163-1	WASHER — thrust.....	1				

\* Not Sold Separately

# HOMELITE CHAIN SAW MODEL 7-19C

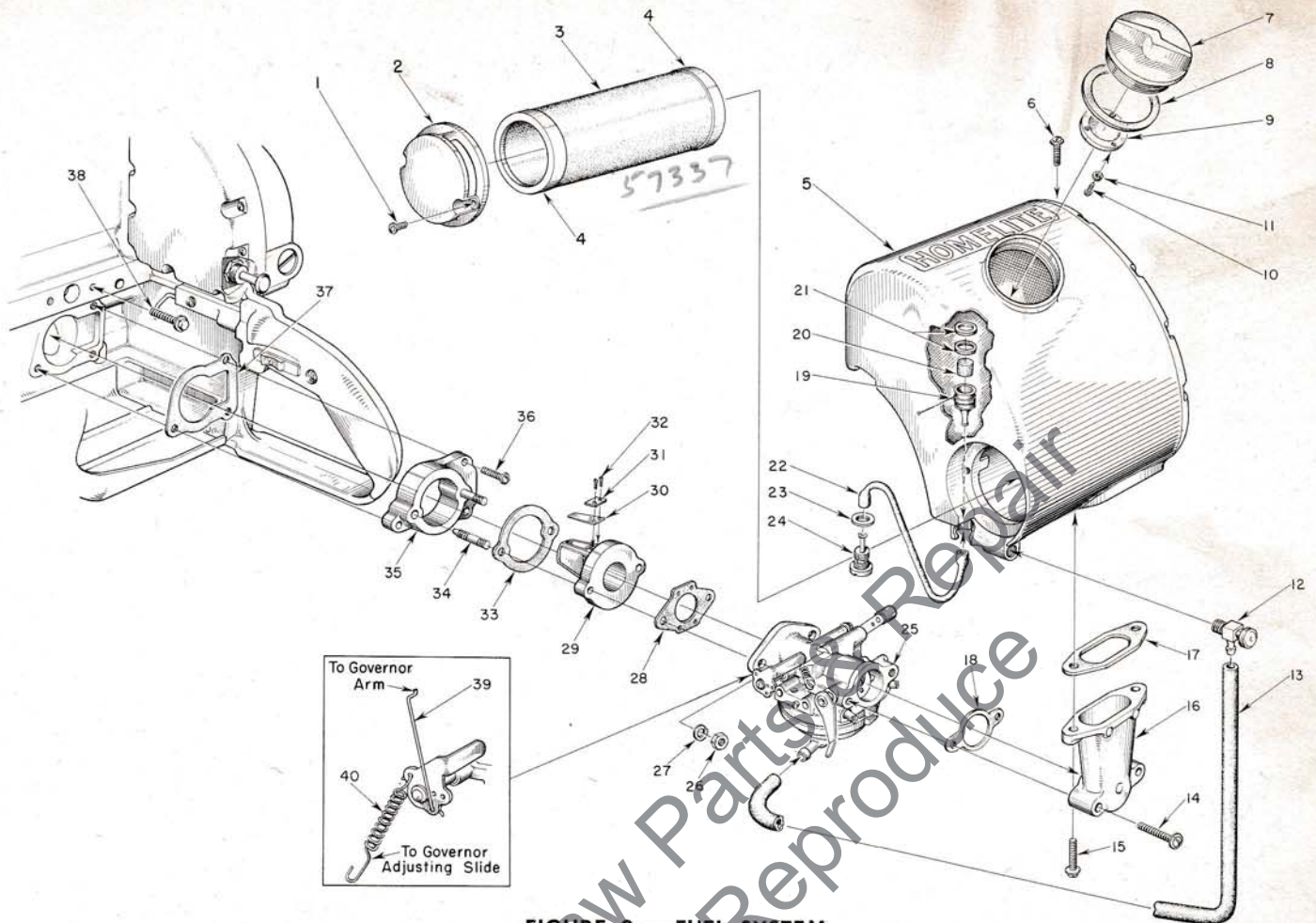


FIGURE 2 — FUEL SYSTEM

MARCH 1959

Index No.	Part No.	Description	No. Required	Index No.	Part No.	Description	No. Required
1	80571	SCREW — 6-32 x 3/8 pan hd.	2	19	A-56200	STRAINER — outlet, w/brass nail	1
2	55494	CAP — air filter	1			Includes	
3	A-55533	AIR FILTER	1	20	74374	FILTER — felt	1
		Includes		21	56196	BUMPER — rubber	2
4	55532	GASKET (cemented to element)	2	22	55805	SLEEVE — flexible	1
5	A-55671	FUEL TANK	1	23	55676	GASKET — outlet fitting	1
	56400	DECAL — "Homelite" (for fuel tank)	1	24	55572	FITTING — outlet	1
	55968-A	DECAL — "Instructions" (for fuel tank)	1	25	*	CARBURETOR	1
	56385-A	DECAL — "7-19C" (for fuel tank)	1	26	81013	NUT — 1/4-20 hex	2
6	80572	SCREW — 10-32 x 3/8 pan hd.	1	27	83009	WASHER — lock	2
7	A-55305	CAP — fuel	1	28	55553	GASKET — carburetor	1
		Includes		29	55932	ADAPTER — reed valve	1
8	72173	GASKET	1	30	55941	REED	4
9	A-55301-C	VALVE — relief	1	31	55942	PLATE — reed	4
10	80592	SCREW — 3-48 x 1/4 rd. hd.	3	32	80658	SCREW — 4-40 x 3/16 pan hd.	8
11	83083	WASHER — lock	3	33	55946	GASKET — adapter-spacer	1
12	55677	VALVE — shut-off	1	34	55945	STUD	2
13	55680	FUEL LINE	1	35	55934	SPACER — reed adapter	1
14	80624	SCREW — 10-32 x 1 pan hd.	2	36	80583	SCREW — 10-32 x 3/4 pan hd.	3
15	80572	SCREW — 10-32 x 3/8 pan hd.	2	37	55116	GASKET — reed valve adapter	1
16	55019-3	ADAPTER — air cleaner	1	38	80581	SCREW — 1/4-20 x 3/8 hex hd.	2
17	55059	GASKET — adapter	1	39	†55642	ROD — governor	1
18	72971-1	GASKET — air elbow	1	40	‡55529	SPRING	1

\* For Brown 1-CP Carburetor, See Figure 3; For Tillotson HL-27B Carburetor, See Figure 4.

† Assemble governor rod through bottom rear hole on Model 7-19C.

‡ Hook governor spring through forward holes of stop lever.

Always furnish saw model and serial number when ordering parts.

# HOMELITE CHAIN SAW MODEL 7-19 C

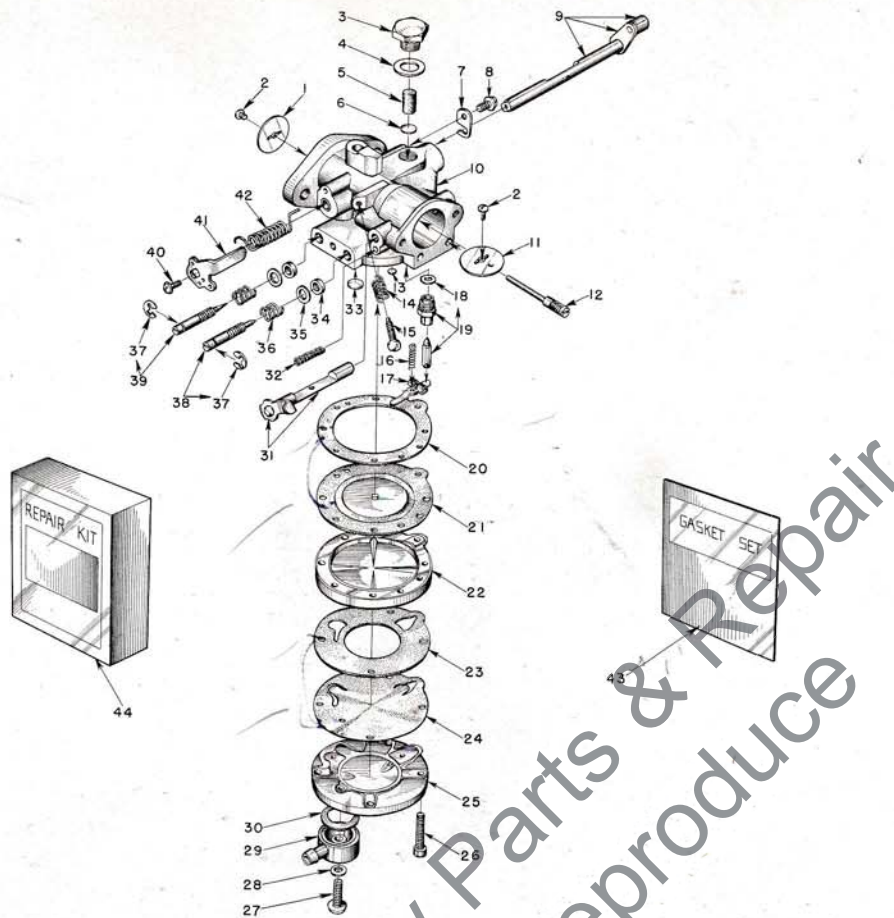


FIGURE 3 — BROWN 1-CP CARBURETOR PARTS

MARCH 1959

Index No.	Part No.	Description	No. Required	Index No.	Part No.	Description	No. Required
	A-56505	CARBURETOR MODEL 1-CP .....	1	22	77301	COVER — main diaphragm .....	1
		Includes		23	*77305	GASKET — pump body .....	1
1	74980	SHUTTER — throttle .....	1	24	*77304	DIAPHRAGM — pump .....	1
2	77044	SCREW — shutter, 4-40 x 1/8 rd. hd. ....	2	25	77316	BODY — fuel pump .....	1
3	†77306	SCREW — plug .....	1	26	77160	SCREW — body, 6-32 x 3/4 fil. hd. ....	4
4	*77307	GASKET — plug screw .....	1	27	77320	SCREW — fuel connection .....	1
5	†77308	FILTER — felt .....	1	28	*74997	GASKET — fibre .....	1
6	†77317	SCREEN — filter .....	1	29	77318	TURRET — fuel inlet connection .....	1
7	†74981	CLIP — throttle shaft .....	1	30	*77319	GASKET — inlet connection .....	1
8	†77041	SCREW — throttle clip, 6-32 x 1/4 pan hd. ....	1	31	A-77322	SHAFT & LEVER — choke .....	1
9	A-77253	SHAFT — throttle .....	1	32	77311	SPRING — choke friction .....	1
10	A-77321	BODY — service .....	1	33	†74977	PLUG — Welch (large) .....	1
11	74991	SHUTTER — choke .....	1	34	*77007	RING — square .....	2
12	†77014	PIN — fulcrum .....	1	35	†77006	WASHER — adjustment packing .....	2
13	†77309	PLUG — Welch (main nozzle) .....	1	36	†77005	SPRING — adjustment compression .....	2
14	77010	SPRING — idle speed screw .....	1	37	77004	CLIP — spring retaining .....	2
15	77040	SCREW — idle speed, 6-32 x 9/16 rd. hd. ....	1	38	†A-77328	SCREW — main adjusting, w/77004 clip....	1
16	†77015	SPRING — diaphragm lever tension .....	1	39	†A-77251	SCREW — idle adjusting w/77004 clip....	1
17	†77016	LEVER — diaphragm .....	1	40	†77042	SCREW — idle stop .....	1
18	*77346	GASKET — copper .....	1	41	77247	LEVER — throttle stop .....	1
19	†A-77327	NEEDLE & SEAT — inlet w/gasket .....	1	42	†77313	SPRING — throttle friction .....	1
20	*77303	GASKET — main diaphragm .....	1	43	†77336	GASKET Set (GS-152) .....	1
21	*A-77323	DIAPHRAGM — main .....	1	44	77337	REPAIR PARTS KIT (RK-155) .....	1

\*Included in GS-152 Gasket Set  
 †Included in RK-155 Repair Kit

# HOMELITE CHAIN SAW MODEL 7-19C

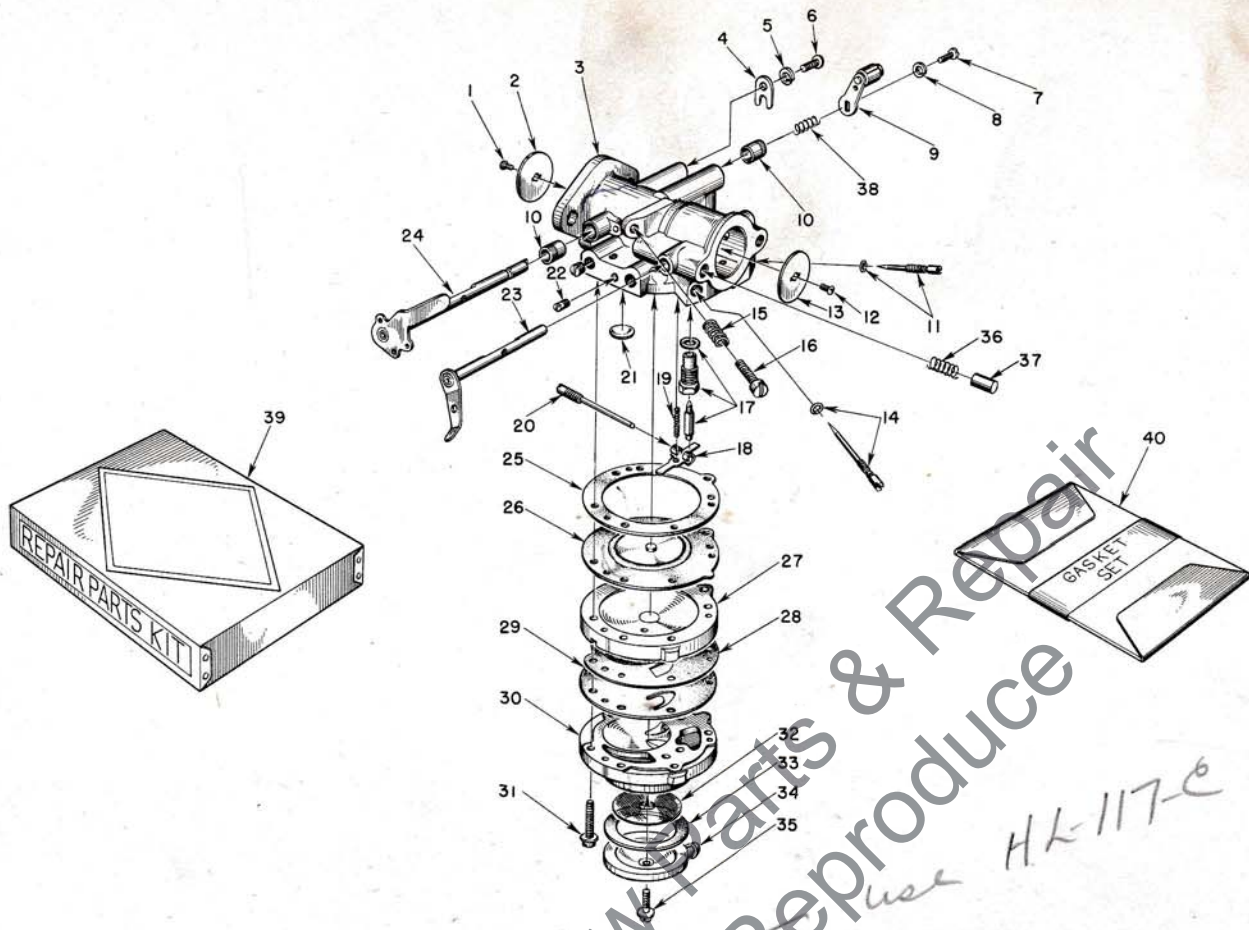


FIGURE 4 — TILLOTSON HL-27B CARBURETOR PARTS

MARCH 1959

A-57798-B

HK-117-C

Index No.	Part No.	Description	No. Required	Index No.	Part No.	Description	No. Required
	A-56066	CARBURETOR—Till. Model HL-27B	1	18	*55747	LEVER—inlet control	1
		Includes		19	*55759	SPRING—control lever	1
1	*80012	SCREW—throttle shutter	1	20	*A-55762	SCREW—pinion	1
2	73272	SHUTTER—throttle	1	21	30818	PLUG	1
3	A-75533	BODY—service	1	22	73067	PLUG—drain	1
4	73086	CLIP—throttle shaft	1		71505	PLUG	2
5	83000	WASHER—lock #8	1	23	A-55766	LEVER—choke	1
6	73088	SCREW—8-32 x 5/8, flat hd.	1	24	A-75624	SHAFT—throttle, w/stop lever	1
7	*71521	SCREW—4-36 x 1/2 rd. hd.	1	25	55754	GASKET—main diaphragm	1
8	*83008	WASHER—lock #4	1	26	*A-55760	DIAPHRAGM—main	1
9	A-75528	LEVER and ROLLER—throttle	1	27	55749	COVER—main diaphragm	1
10	72812	BUSHING—throttle shaft	2	28	55881	GASKET—pump diaphragm	1
11	*A-75527	SCREW—main adjust. (hi speed)	1	29	*55753	DIAPHRAGM—pump	1
		Includes		30	55748	BODY—pump	1
	55764	"O"—ring	1	31	*55316	SCREW and WASHER	6
12	*80012	SCREW—choke shutter (same as No. 1)	1	32	55752	SCREEN—fuel strainer	1
13	73263	SHUTTER—choke	1	33	55751	GASKET—pump cover	1
14	*A-75530	SCREW—idle adjust. (lo speed)	1	34	55750	COVER—pump	1
		Includes		35	55756	SCREW—retaining	1
	55764	"O"—ring	1	36	73264	SPRING—choke friction pin	1
15	*28064	SPRING—idle stop screw	1	37	71494	PIN—choke friction	1
16	*71509	SCREW—idle stop (speed control)	1	38	56175	SPRING	1
17	*A-55761	INLET NEEDLE and SEAT	1	39	75623	REPAIR PARTS KIT (RK-357)	1
		Includes		40	*55836	GASKET SET (GS-122)	1
	55344	GASKET—inlet seat	1				

\* Included in Repair Parts Kit (RK-357)

Always furnish saw model and serial number when ordering parts

# HOMELITE CHAIN SAW MODEL 7-19C

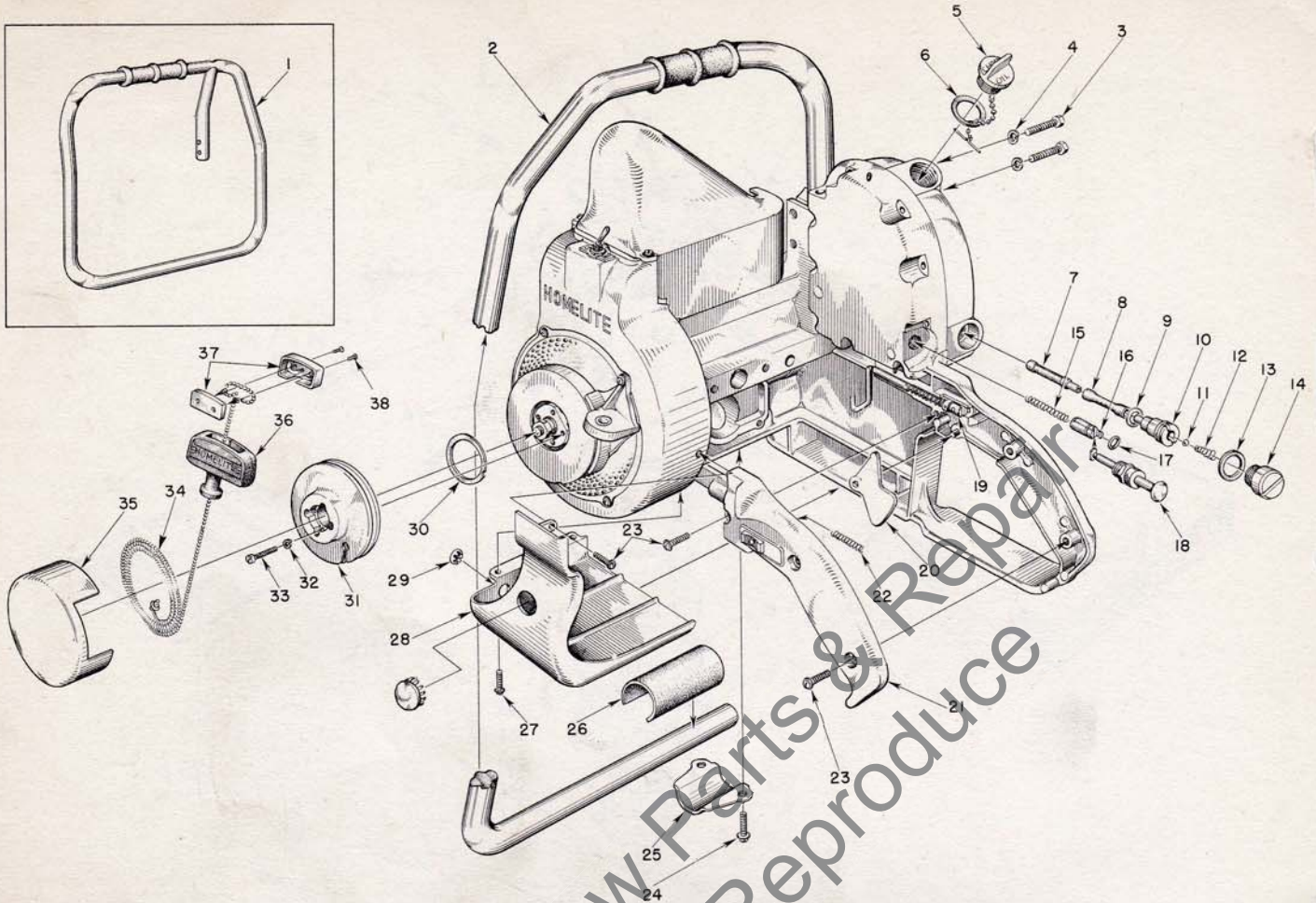


FIGURE 5 — STARTER, HANDLE, GRIP AND LUBRICATOR PARTS

MARCH 1959

Index No.	Part No.	Description	No. Required	Index No.	Part No.	Description	No. Required
1	A-55808	HANDLE—wrap-around (7-19CA)	1			Includes	
	80308	SCREW—5/16-18 x 1 allen sock't hd.	1	20	AA-55207	SPRING—throttle rod	1
2	A-56093	HANDLE—flush-cut (7-19C)	1	21	A-55631	TRIGGER—throttle	1
	A-56217	BRACE (for wrap-around handle)	1			COVER—grip	1
	A-56216	BRACE (for flush-cut handle)	1			Includes	
	*80578	SCREW—10-32 x 7/16 pan hd.	1		AA-55282	LOCK—throttle	1
	*81109	NUT—10-32 flex lock	1			Includes	
3	80087	SCREW—5/16-18 x 1 1/2 hex hd.	2	22	72970	SPRING—throttle lock	1
4	83003	WASHER—3/16 lock	2	23	80560	SCREW—8-32 x 1/2 pan hd.	4
5	AA-71655-1	CAP—oil	1	24	80581	SCREW—1/4-20 x 5/8 hex hd.	2
		Includes		25	55614	CLAMP—handle bar	1
6	72280	GASKET	1	26	55685	CUSHION—rubber	1
7	AA-55259-A	FINDER—oil	1	27	80625	SCREW—10-32 x 1/2 pan hd.	2
8	55133-A	SLEEVE—flexible oil	1	28	55512-1	SHIELD—carburetor	1
9	55110	GASKET	1		29187	PLUG—button	1
10	55109-A	FITTING—check valve	1	29	55681	PLUG—button	1
11	25527	BALL (5/32 dia.)	1	30	71588	SHIM—plastic	As req'd.
12	55288-A	SPRING	1	31	55597-1	PULLEY	1
13	55107	GASKET	1	32	83004	WASHER—lock #6	4
14	A-55628	CAP—supply line	1	33	80475	SCREW—6-32 x 3/4 fil. hd.	4
15	71762	SPRING	1	34	55898	ROPE—starting	1
16	A-74406	TUBE—plunger	1	35	AA-73234-4	COVER—starting pulley	1
		Includes			56388-B	DECAL — "Homelite 7-19C" (pulley cover)	1
17	74388	"O" ring	1	36	55937	GRIP—starting	1
18	71764	BUTTON—plunger	1	37	A-56081	INSERT—grip (w/screws)	1
19	A-55630	ROD—throttle	1			Includes	
				38	80619	SCREW	2

\* Supplied with A-56216 or A-56217 brace.

# HOMELITE CHAIN SAW MODEL 7-19 C

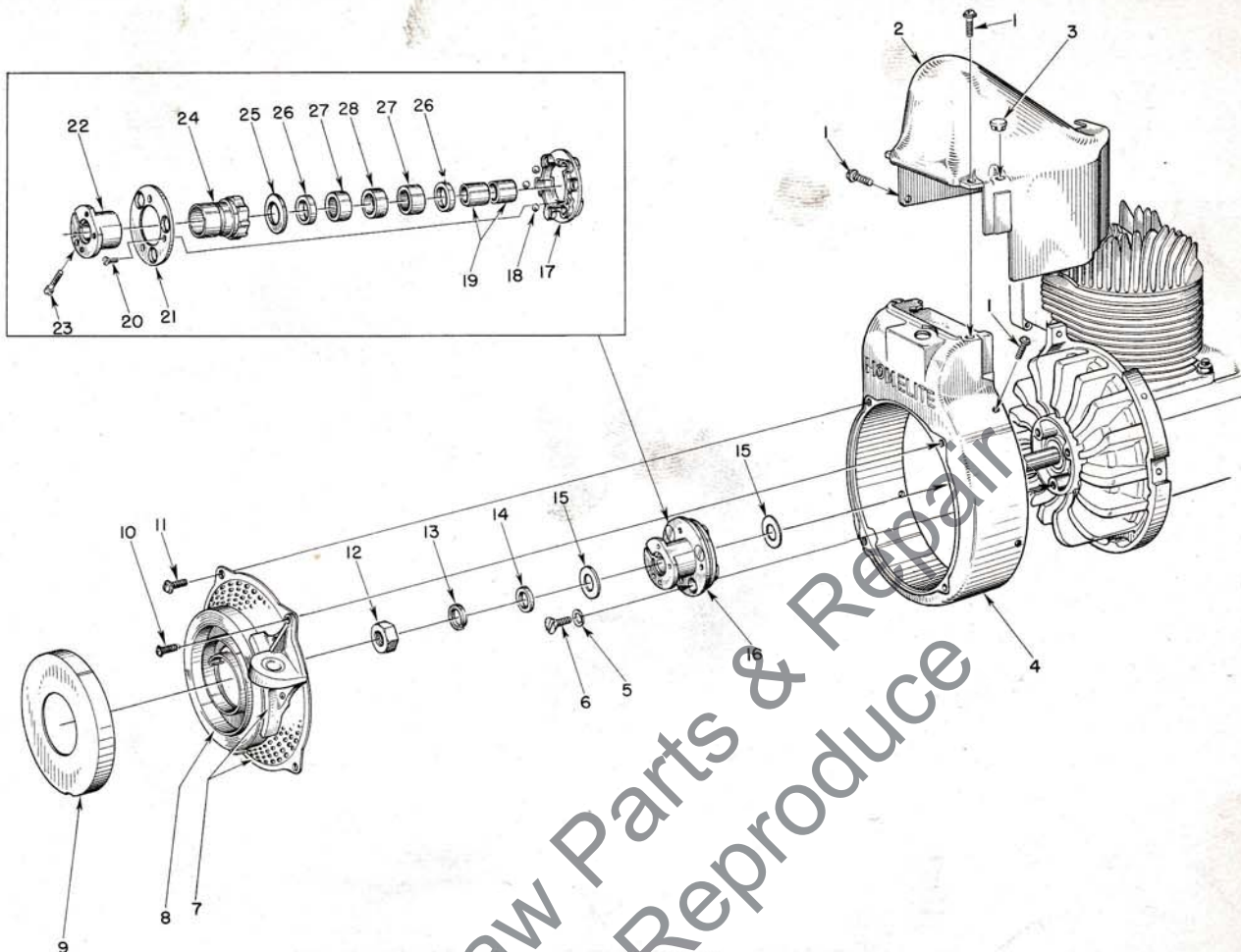


FIGURE 6 — BALL DRIVE AND AIR SHROUD

MARCH 1959

Index No.	Part No.	Description	No. Required
1	80577	SCREW — 8-32 x 3/8 pan hd.....	7
2	55015-3	SHIELD — cylinder.....	1
3	32814	PLUG — buffon.....	1
4	A-56063-1	SHROUD — air.....	1
5	83074	WASHER — lock, countersunk 1/4.....	3
6	80173	SCREW — 1/4-20 x 5/8 flat hd.....	3
7	A-56088	SCREEN and BRACKET.....	1
		Includes	
	A-56085	BRACKET and BUSHING.....	1
		Includes	
	55363-A	BUSHING.....	1
8	56497	SPRING — recoil.....	1
9	71603	COVER — spring housing.....	1
10	80576	SCREW — 10-32 x 1/16 (through bracket).....	1
11	80579	SCREW — 10-32 x 3/8 pan hd.....	3
12	81110	NUT — 7/16-20 hex-jam.....	1
13	83019	WASHER — lock, 7/16.....	1
14	84055	WASHER — flat aluminum, 7/16.....	1
15	55652	WASHER — thrust.....	2

Index No.	Part No.	Description	No. Required
16	A-56493	BALL DRIVE.....	1
		Includes	
17	71563-C	PLATE — ball drive.....	1
18	30355-1	BALL — steel.....	3
19	74221	RACE — inner.....	2
20	80464	SCREW — 5-40 x 5/16 flat hd.....	3
21	71570-B	RETAINER — ball.....	1
22	A-56519	HUB — ratchet.....	1
		Includes	
23	72295-A	SCREW — ratchet hub.....	1
	AA-72306-1	RATCHET and BEARING.....	1
		Includes	
24	AA-73549	RATCHET.....	1
		Includes	
25	73525	WASHER — formica.....	1
26	71597	SEAL — garlock.....	2
27	71596	BEARING — needle.....	2
28	71595	WICK — felt.....	1

# HOMELITE CHAIN SAW MODEL 7-19 C

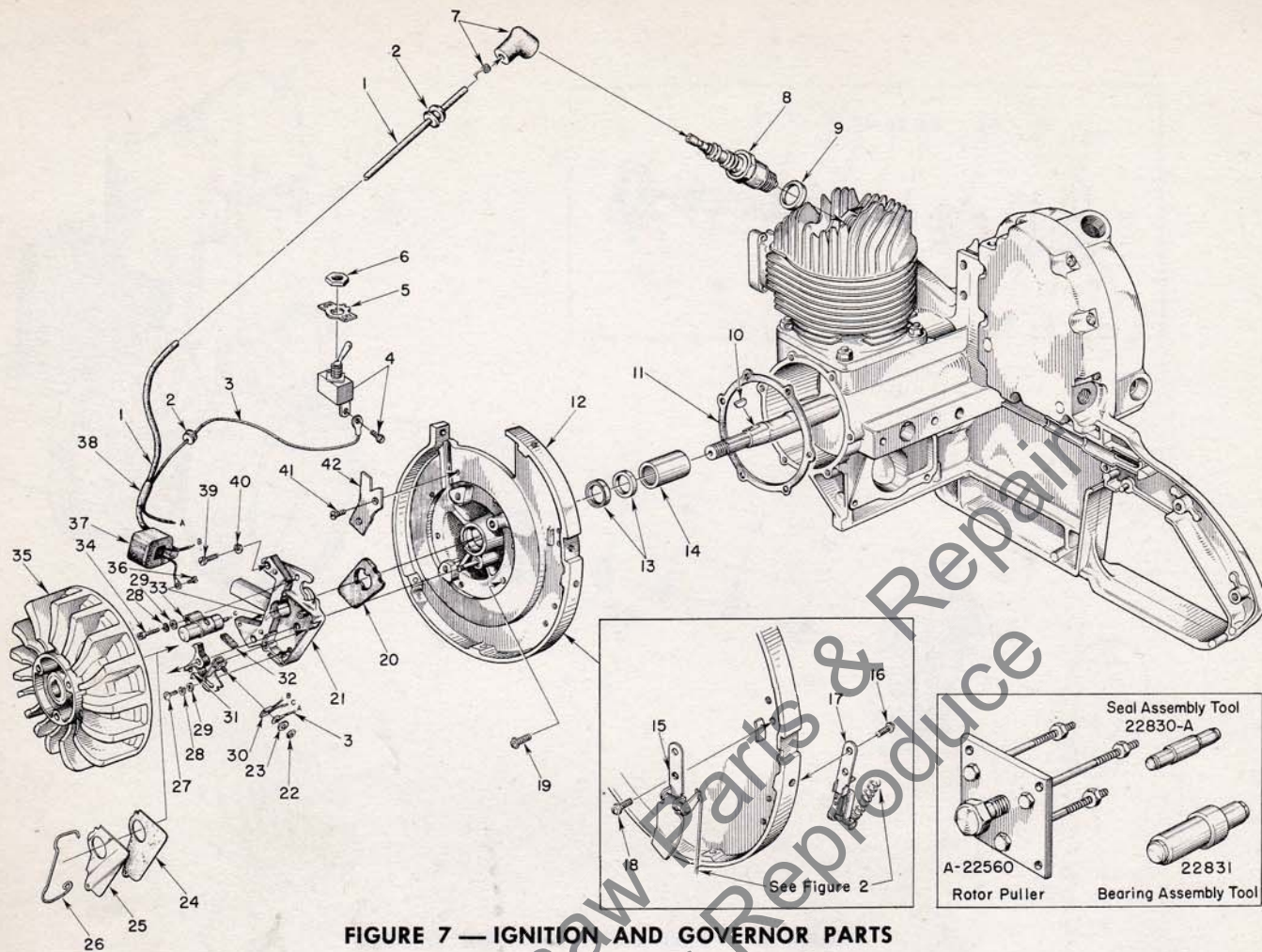


FIGURE 7 — IGNITION AND GOVERNOR PARTS

MARCH 1959

Index No.	Part No.	Description	No. Required	Index No.	Part No.	Description	No. Required
1	56029	LEAD—high tension	1	21	55969	BOX—breaker, w/core	1
2	60929	GROMMET	2	22	55982	NUT—terminal	1
3	56028	LEAD—ground	1	23	55983	WASHER—terminal	1
4	AA-72094-A	SWITCH—toggle, w/screw	1	24	55978	GASKET—dust cover	1
		Includes		25	55979	COVER—dust	1
5	55879	PLATE—"on-off"	1	26	55980	CLAMP—dust cover	1
6	72084-A1	NUT—hex	1	27	55985	SCREW—8-32 x 3/8 fl. hd.	1
7	A-55373	TERMINAL—"Sparky" (cover & spring)	1	28	83060	WASHER—lock	2
8	71530	SPARK PLUG (HO-8A)	1	29	84048	WASHER—flat	2
9	25038	GASKET (included with spark plug)	1	30	55981	TERMINAL (Jam-tite)	1
10	75078	KEY—rotor	1	31	A-55971	POINTS (set)	1
11	55049	GASKET—back plate	1	32	55984	WICK, felt	1
12	A-56180	BACK PLATE (with pivot post)	1	33	55987	CONDENSER (w/terminal 55981)	1
		Includes		34	55988	SCREW	1
13	71597	SEAL—garlock	2	35	56111	ROTOR	1
14	55204	BEARING—needle	1	36	55977	SCREW—coil ground	1
15	* A-56150	GOVERNOR—vane	1	37	55986	COIL	1
16	80629	SCREW—8-32 x 5/16 pan hd.	2	38	56027	SLEEVE—insulating	1
17	** A-55645	PLATE—governor adjusting	1	39	80660	SCREW—10-24 x 7/8 fl. hd.	2
18	80605	SCREW—6-32 x 5/16 pan hd.	2	40	83046	WASHER—#10 lock	2
19	80576	SCREW—10-32 x 7/16 pan hd.	6	41	80598	SCREW—6-32 x 5/16 flat hd.	2
20	55989	WASHER—sealing, felt	1	42	55595-1	CLAMP—lead	1
					56206	TAPE—insulation	1

\* Does not include governor rod; see Figure 2.

\*\* Does not include tension spring; see Figure 2.



# HOMELITE CHAIN SAW MODEL 7-19 C

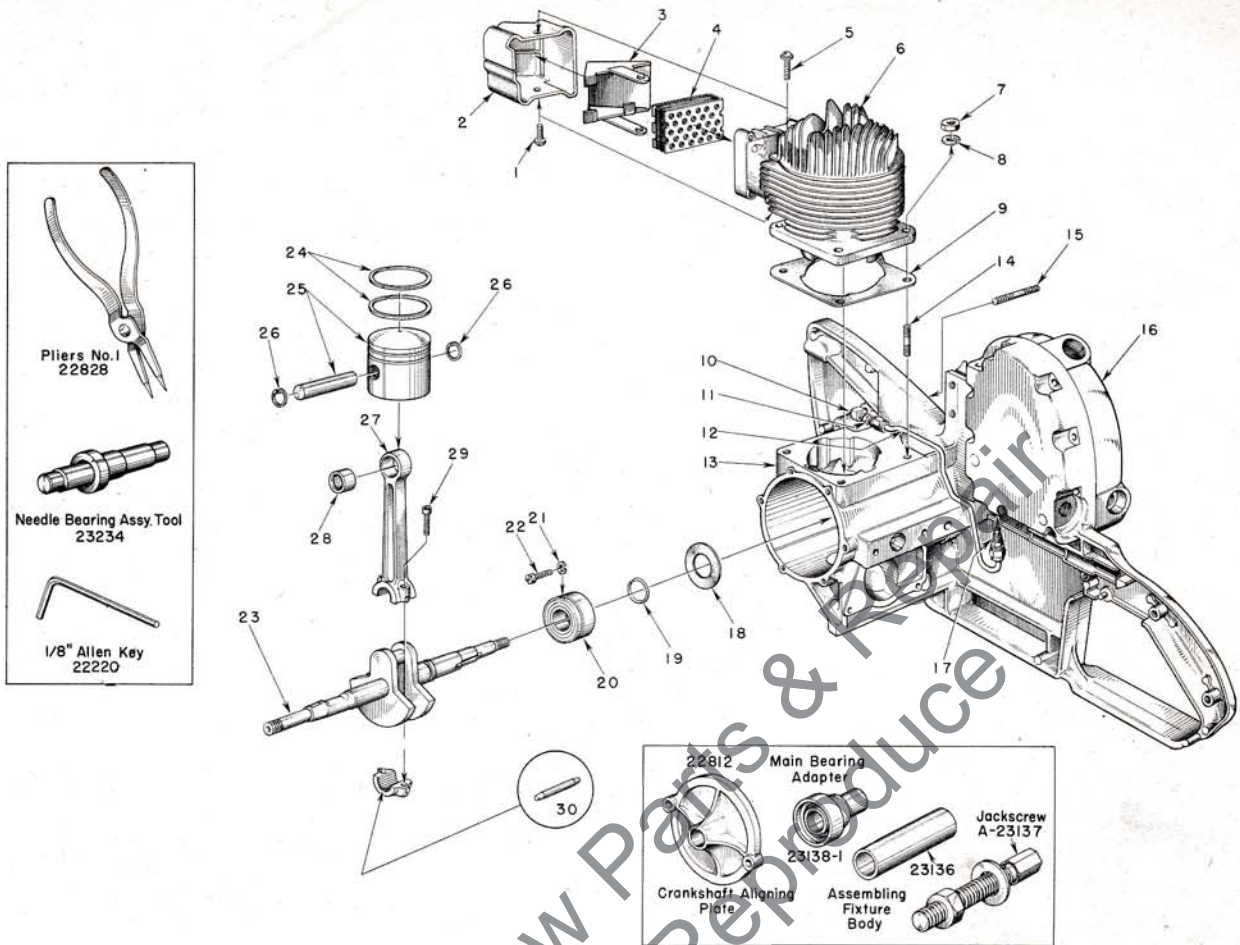


FIGURE 8 — ENGINE ASSEMBLY

MARCH 1959

Index No.	Part No.	Description	No. Required	Index No.	Part No.	Description	No. Required
1	80625	SCREW — 10-32 x 1/2 pan hd.....	1		80622	SCREW — self-tapping.....	9
2	55506-A	DAMPER — heat.....	1		55372	PAD — felt.....	1
3	56396	CAP — exhaust.....	1	17	A-55824	VALVE — check.....	1
4	A-56068	ELEMENT — muffler.....	1	18	55048-A	GASKET — crankcase sealing.....	1
5	80583	SCREW — 10-32 x 3/4 pan hd.....	1	19	56109	RING — snap.....	1
6	56182-A	CYLINDER.....	1	20	56097	BEARING — main.....	1
7	81065-2	NUT — hex 1/4-28.....	4	21	83061	WASHER — lock, special thin.....	2
8	83009	WASHER — lock 1/4.....	4	22	19238-A	SCREW — main bearing retaining.....	2
9	55050-A	GASKET — cylinder.....	1	23	56098-B	CRANKSHAFT.....	1
10	31734	ELBOW — connector 90°.....	1	24	55537	RING — piston.....	2
11	31733-1	ADAPTER — straight.....	1	25	A-55599	PISTON and PIN.....	1
12	A-55625	LINE — chain oil.....	1			Includes	
13	A-56202	CRANKCASE — w/pivot pin.....	1	26	55095	RING — piston pin retaining.....	2
		Includes		27	AA-55195	CONNECTING ROD.....	1
14	55871	STUD — cylinder.....	4			Includes	
15	55623	STUD — guide bar.....	2	28	55196	BEARING — piston pin.....	1
16	A-55621	COVER — oil reservoir.....	1	29	80541	SCREW — 8-32 x 1/2 allen cap.....	2
	55833	GASKET — reservoir cover.....	1	30	AA-55280	ROLLERS (set of 27).....	1

# HOMELITE CHAIN SAW MODEL 7-19C

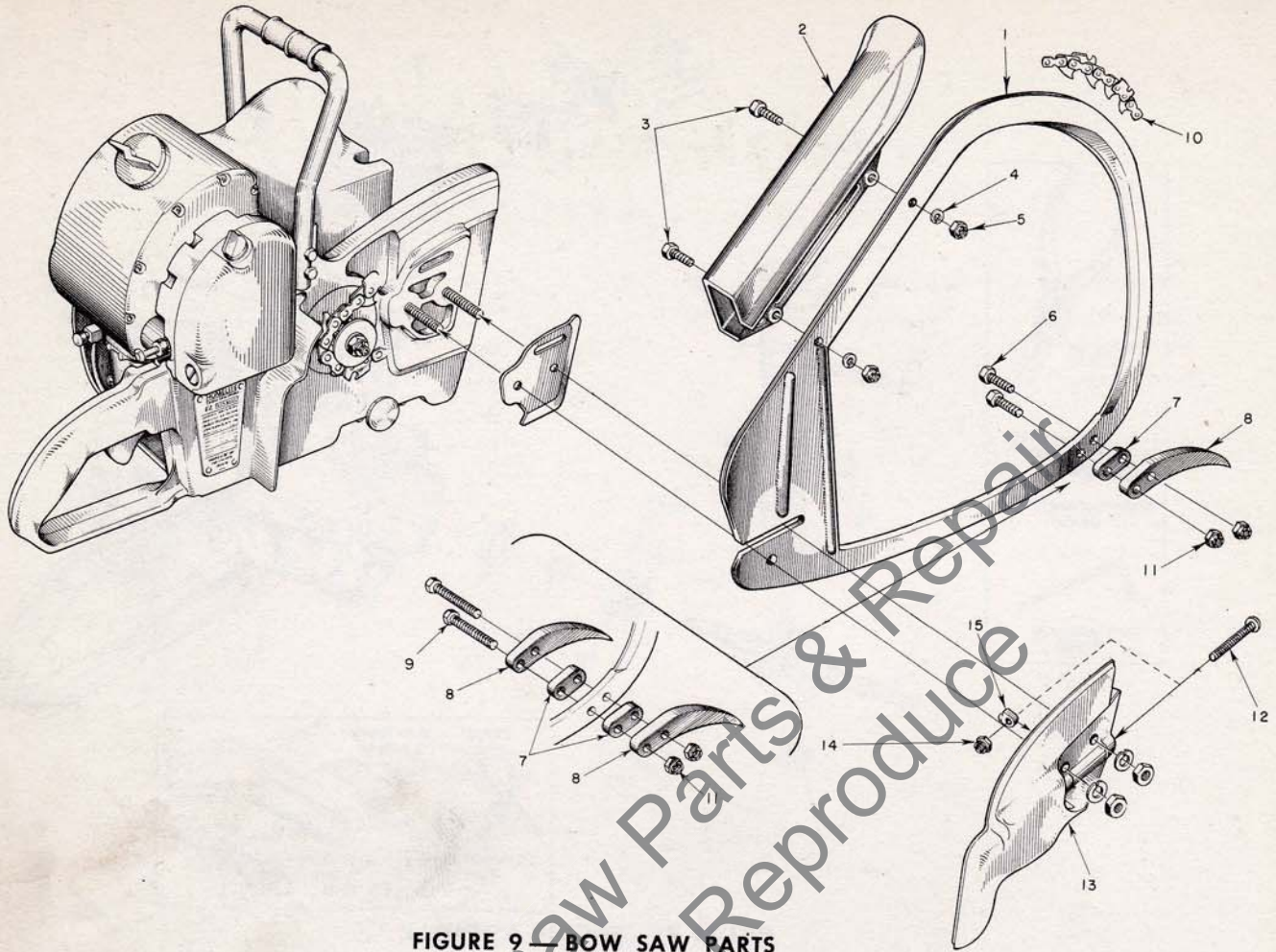


FIGURE 9 — BOW SAW PARTS

MARCH 1959

Index No.	Part No.	Description	No. Required	Index No.	Part No.	Description	No. Required
1	A-56485	BOW GUIDE — 16"	1	10	A-51850	BOW CHAIN — 16", #62C.....	
2	55952	GUARD .....	1	11	81112	NUT — 5/16-24 hex .....	2
3	80355	SCREW — 1/4-20 x 1/2 hex hd. ....	2		A-55668-1	COVER — drive case.....	1
4	83009	WASHER — 1/4 lock .....	2			Includes	
5	81013	NUT — 1/4-20 hex .....	2	12	80617	SCREW — 5/16-18 x 2" rd. hd. ....	1
6	80546	SCREW — 5/16-24 x 1 1/4 hex hd. ....	2	13	**	COVER .....	1
7	*75729	SPACER .....		14	81123	NUT — 5/16-18 hex lock .....	1
8	*75728	SPUR .....		15	55613	PIN — adjusting.....	1
9	†80606	SCREW — 5/16-24 x 1 3/4 hex hd. ....	2				

\*Optional Equipment — 1 or 2 per bow

\*\*Not sold separately

†Use when bow has two spurs and two spacers

# HOMELITE

## Authorized Sales and Service Branches

Homelite sales and service factory branches are located throughout the country. Field representatives and factory-trained servicemen are always available, ready and able to keep your Homelites running in top performance at all times. See the "Yellow Pages" for the address and phone number of your nearest Homelite Branch office.

STATE	CITY
Alabama	Birmingham
California	Alhambra
	Fresno
	Sacramento
	S. San Francisco
Colorado	Denver
Connecticut	Byram (Port Chester)
	Hartford
Florida	Jacksonville
	Miami
Georgia	Atlanta
Illinois	Bloomington
	Springfield
	Stone Park (Chicago)
Indiana	Indianapolis
Louisiana	Bossier City
	Metairie
Maine	Orono
Maryland	Baltimore
Massachusetts	Allston (Boston area)
Michigan	Detroit
	Grand Rapids
	Saginaw
Minnesota	St. Paul
Mississippi	Jackson
Missouri	Kansas City
	St. Louis
Nebraska	Omaha
New Jersey	North Arlington
	Woodbridge
New York	Buffalo
	Latham (Albany area)
	Rochester
	Syracuse

STATE	CITY
North Carolina	Charlotte
	Raleigh
Ohio	Cincinnati
	Cleveland
	Toledo
Oklahoma	Oklahoma City
Oregon	Portland
Pennsylvania	Altoona
	Erie
	Harrisburg
	Hazleton
	Malvern
	Philadelphia
	Pittsburgh
Tennessee	Knoxville
	Memphis
Texas	Cleveland
	Dallas
	Houston
	Lufkin
	Silsbee
Utah	North Salt Lake
Virginia	Arlington
	Richmond
	Roanoke
Washington	Seattle
	Spokane
West Virginia	Charleston
	Clarksburg
Wisconsin	Milwaukee

### DOMINION OF CANADA TERRY MACHINERY CO., LTD.

Quebec	Montreal
Alberta	Edmonton
British Columbia	Vancouver

New Brunswick	Moncton
Ontario	Ottawa
	Toronto

**You'll  
SPEED WORK  
and make  
MORE MONEY  
with...**



**HOMELITE**  
SELF-PRIMING PUMPS



**HOMELITE**  
DEPENDABLE GENERATORS



**HOMELITE**  
POWERFUL ONE-MAN CHAIN SAWS



**HOMELITE**  
ONE-MAN CONCRETE VIBRATORS



**HOMELITE** — BOSCH (Germany)  
ELECTRIC BUILDER'S HAMMERS

**All Powered By Famous HOMELITE Engines**

Homelite's two-cycle gasoline engines are the most efficient and dependable units of their kind ever built. Their two-cycle design, developed to perfection by Homelite engineers over the past 35 years, gives maximum power for the least weight because power is produced at every piston down stroke. As an added advantage, this design requires fewer moving parts which means greater dependability and lower maintenance

**HOMELITE**

a division of Textron, Inc.  
PORT CHESTER, N. Y.