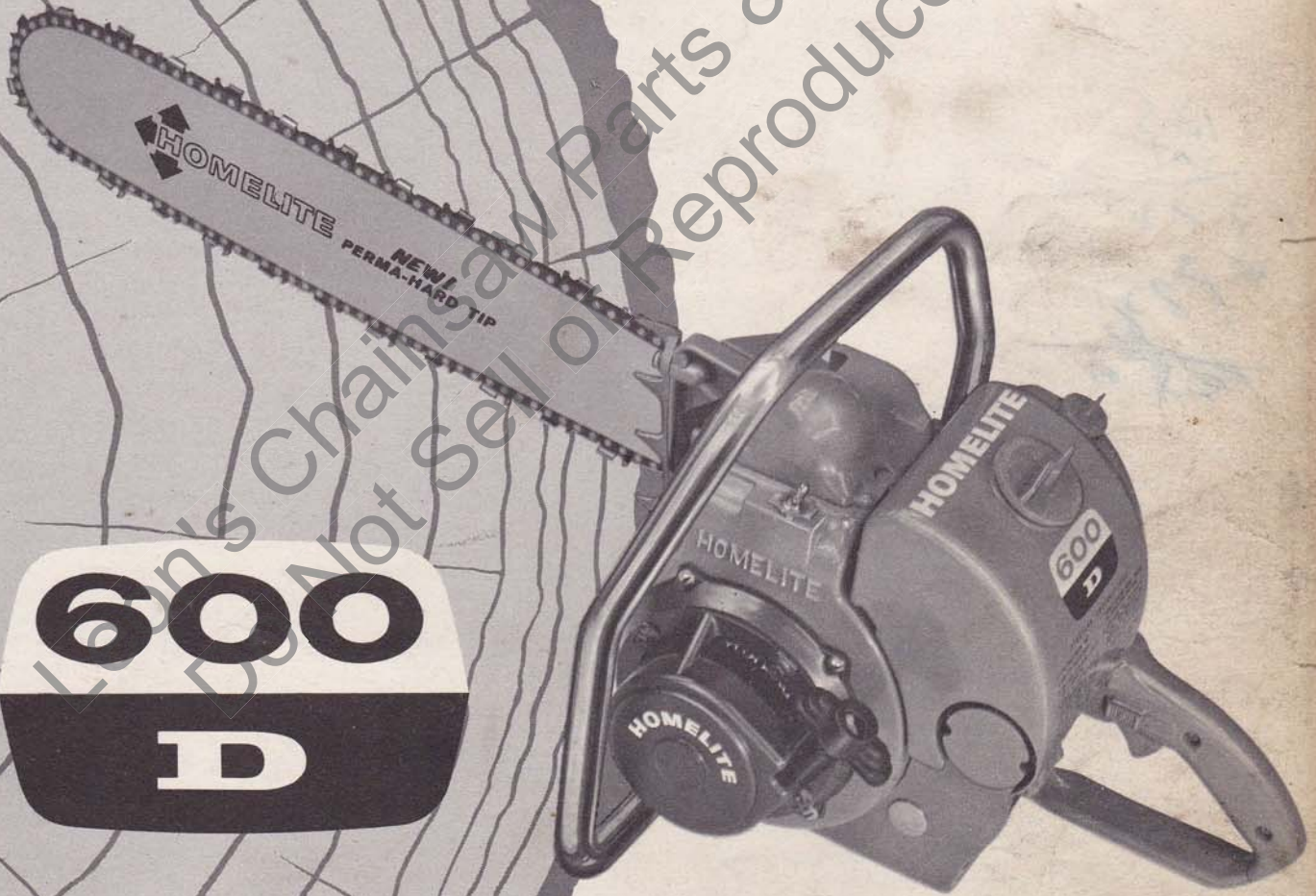


# HOMELITE CHAIN SAW



## PARTS LIST

(Identified by "A" preceding serial number)



# HOMELITE 600 D CHAIN SAW

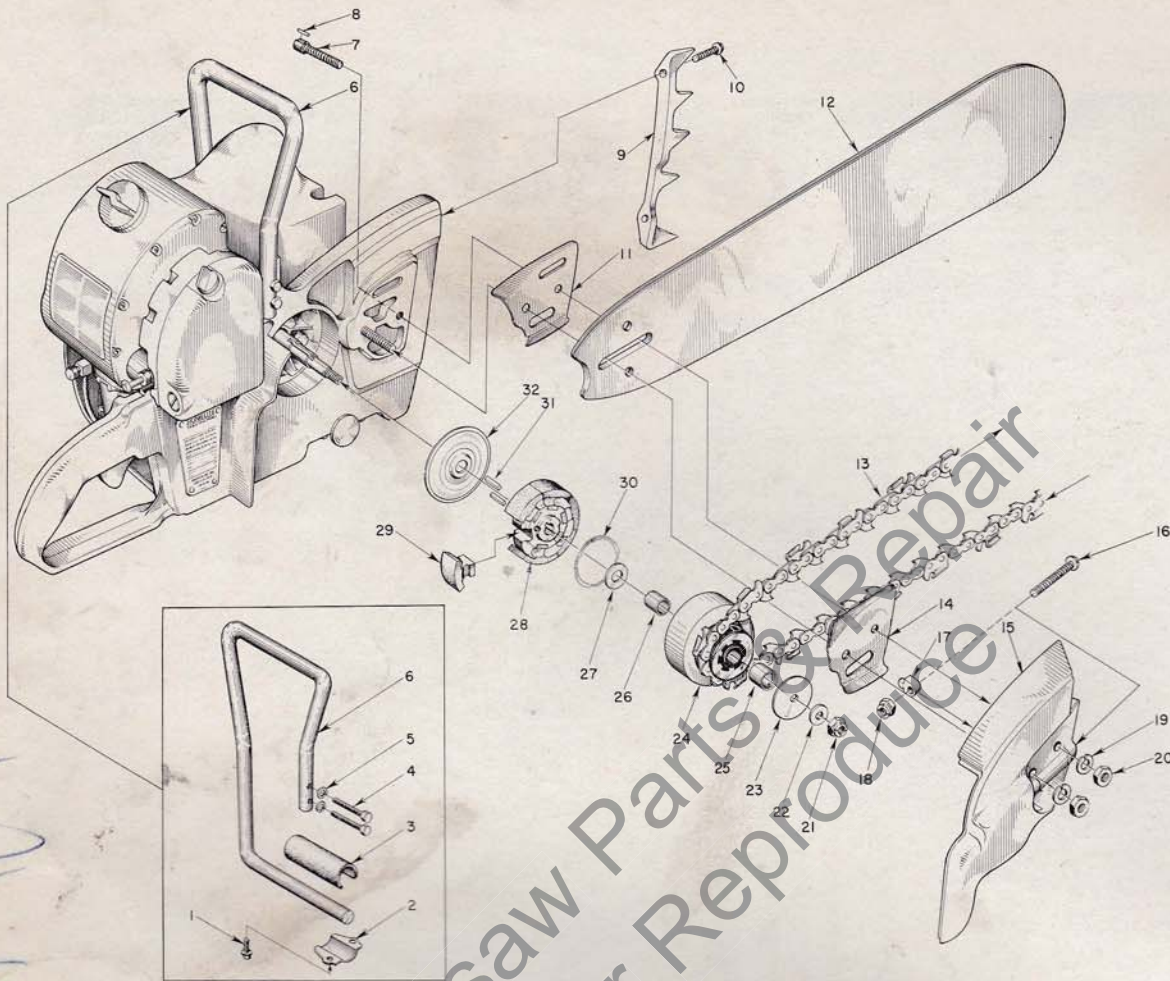


FIGURE 1 — SAW PARTS

AUGUST 1961

4 2  
185  
1925  
4375  
7.50

Index No.	Part No.	Description	No. Required
1	80581	SCREW — 1/4-20 x 5/8	2
2	55614	CLAMP — handle bar	1
3	55685	CUSHION — handle bar	1
4	80087	SCREW — 3/8-18 x 1 1/2 hex. hd.	2
5	83003	WASHER — 5/16 lock	2
6	A-56093	HANDLE	1
7	57175	BOLT — guide bar	2
8	41738	PIN — guide bar bolt	2
9	55632	PLATE — spiked bumper	1
10	80573	SCREW — 1/4-20 x 1 3/8 hex hd.	2
11	56871	PLATE — guide bar, inner	1
INDUCTION HARDENED HOMELITE GUIDE BARS			
12	GW-1416	14" BAR — Homelite, welded nose	1
	GW-1719	17" BAR — Homelite, welded nose	1
	GW-2123	21" BAR — Homelite, welded nose	1
	HT-1416	14" BAR — Homelite, welded nose	1
		7/16 pitch — HOMELITE CHAIN — .063 gauge	
13	HC-6250-L	14" CHAIN — with kit	1
	HC-6258-L	17" CHAIN — with kit	1
	HC-6266-L	21" CHAIN — with kit	1
		.404 pitch — HOMELITE CHAIN — .063 gauge	
	HC-5254-L	14" CHAIN — with kit (for 8 tooth sprkt.)	1

Index No.	Part No.	Description	No. Required
	HC-5263-L	17" CHAIN — with kit (for 8 tooth sprkt.)	1
	HC-5271-L	21" CHAIN — with kit (for 8 tooth sprkt.)	1
14	56872-A	PLATE — guide bar, outer	1
15	A-55668	COVER — drive case	1
		Includes	
16	80617	SCREW — 5/16-18 x 2 rd. hd.	1
17	55613	PIN — guide bar adjusting	1
18	81123	NUT — 5/16 hex-lock	1
19	83018	WASHER — 3/8, lock	2
20	81089	NUT — 3/8-16 hex	2
21	81116	NUT — 3/8-24 flex-lock	1
22	84010	WASHER — 3/8, flat	1
23	55163-1	WASHER — thrust	1
24	*A-57363	SPROCKET & DRUM — 7 tooth (7/16" pitch)	1
		Includes	
25	77403	BEARING — needle	1
26	55661	RACE — inner	1
27	55660-1	WASHER — thrust	1
28	55075-3	SPIDER — clutch	1
29	55076-1	SHOE — clutch	6
30	55123-C	SPRING — clutch	2
31	55225-1	KEY — clutch	2
32	56101-A	COVER — clutch	1

\*Optional

A-56019	SPROCKET & DRUM — 7 tooth (1/2" pitch)
	Includes
55664	BEARING — needle

A-57347	SPROCKET & DRUM — 8 tooth (.404 pitch)
	Includes
55664	BEARING — needle

\*Check type and number of teeth on sprocket before ordering.



# HOMELITE 600 D CHAIN SAW

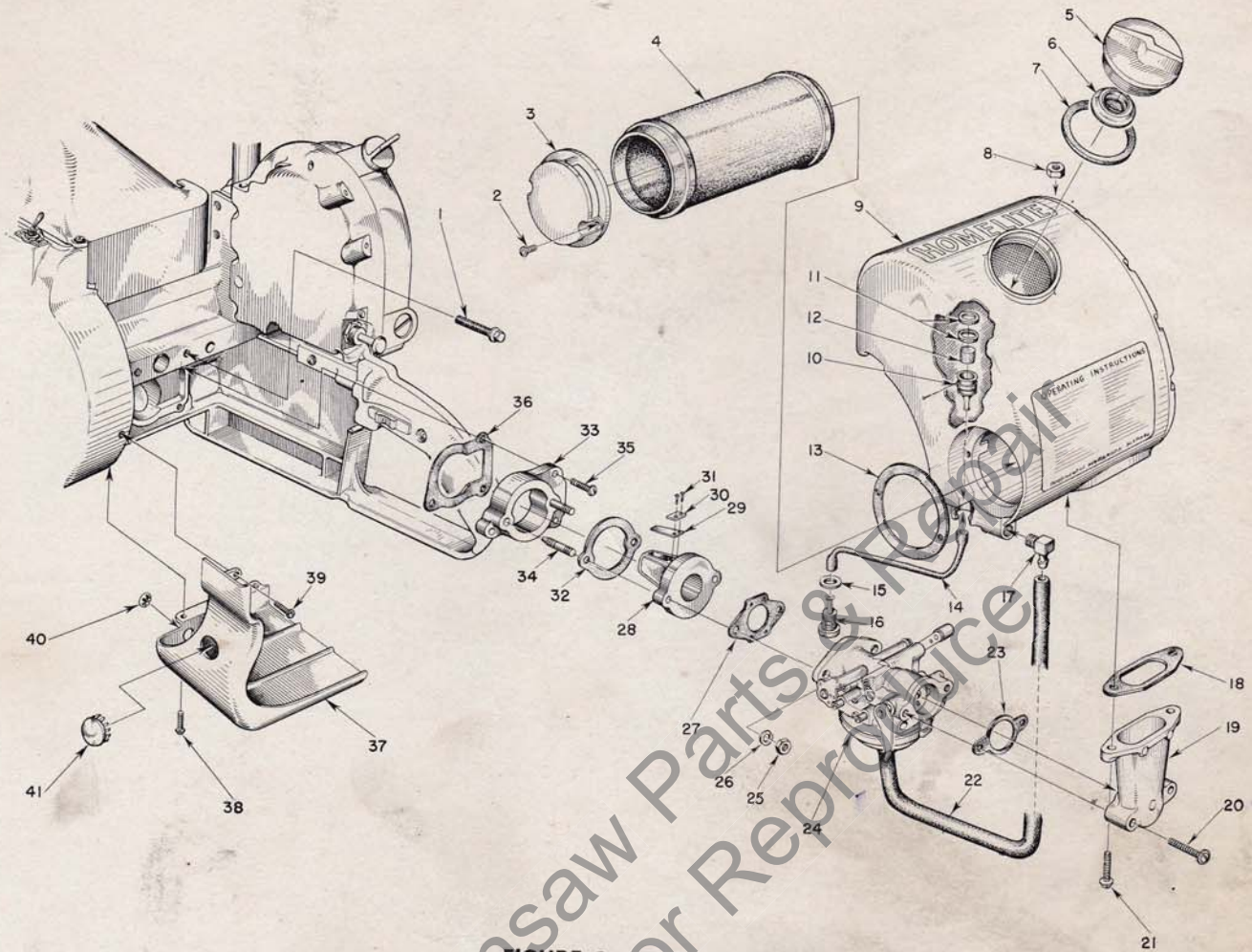


FIGURE 2—FUEL SYSTEM

AUGUST 1961

Index No.	Part No.	Description	No. Required	Index No.	Part No.	Description	No. Required
1	80581	SCREW — 1/4-20 x 5/8 hex hd.	2	20	80624	SCREW — 10-32 x 1 pan hd.	2
2	80630	SCREW — 6-32 x 1/2 pan hd.	2	21	80572	SCREW — 10-32 x 5/8 pan hd.	2
3	55494	CAP — air filter	1	22	55680	LINE — fuel	1
4	57337	AIR FILTER	1	23	72971-1	GASKET — air elbow	1
5	A-56908	CAP — fuel	1	24	A-56484	CARBURETOR	1
		Includes			77343	REPAIR KIT (RK-378)	1
6	56865	VALVE — relief	1		77342	GASKET SET (GS-145)	1
7	72173	GASKET	1	25	81013	NUT — 1/4-20 hex	2
8	81108	NUT — 1/4-20 hex	1	26	83009	WASHER — 1/4 lock	2
9	A-55671	FUEL TANK	1	27	55553	GASKET — carburetor	1
	56596-A	DECAL (Instructions)	1	28	55932	ADAPTER — reed valve	1
	56400	DECAL (Homelite)	1	29	55941	REED	4
	57108	DECAL (600 D)	1	30	55942	PLATE — reed	4
10	A-56200	STRAINER — outlet, w/brass nail	1	31	80658	SCREW — 4-40 x 3/16 pan hd.	8
		Includes		32	55946	GASKET — adapter-spacer	1
11	56196	BUMPER — rubber	2	33	55934	SPACER — reed adapter	1
12	74374	FILTER — felt	1	34	55945	STUD	2
13	57041	GASKET — cement to tank	1	35	80583	SCREW — 10-32 x 3/4 pan hd.	3
14	55805	SLEEVE — flexible	1	36	55116	GASKET — reed valve adapter	1
15	55676	GASKET — outlet fitting	1	37	55512-1	SHIELD — carburetor	1
16	55572-A	FITTING — outlet	1	38	80576	SCREW — 10-32 x 1/16 pan hd.	2
17	74917	ELBOW — fuel line connection	1	39	80560	SCREW — 8-32 x 1/2 pan hd.	1
18	55059	GASKET — adapter	1	40	55681	PLUG — button	1
19	55019-3	ADAPTER — air cleaner	1	41	29187	PLUG — button	1

Always furnish saw model and serial number when ordering parts.



# HOMELITE 600 D CHAIN SAW

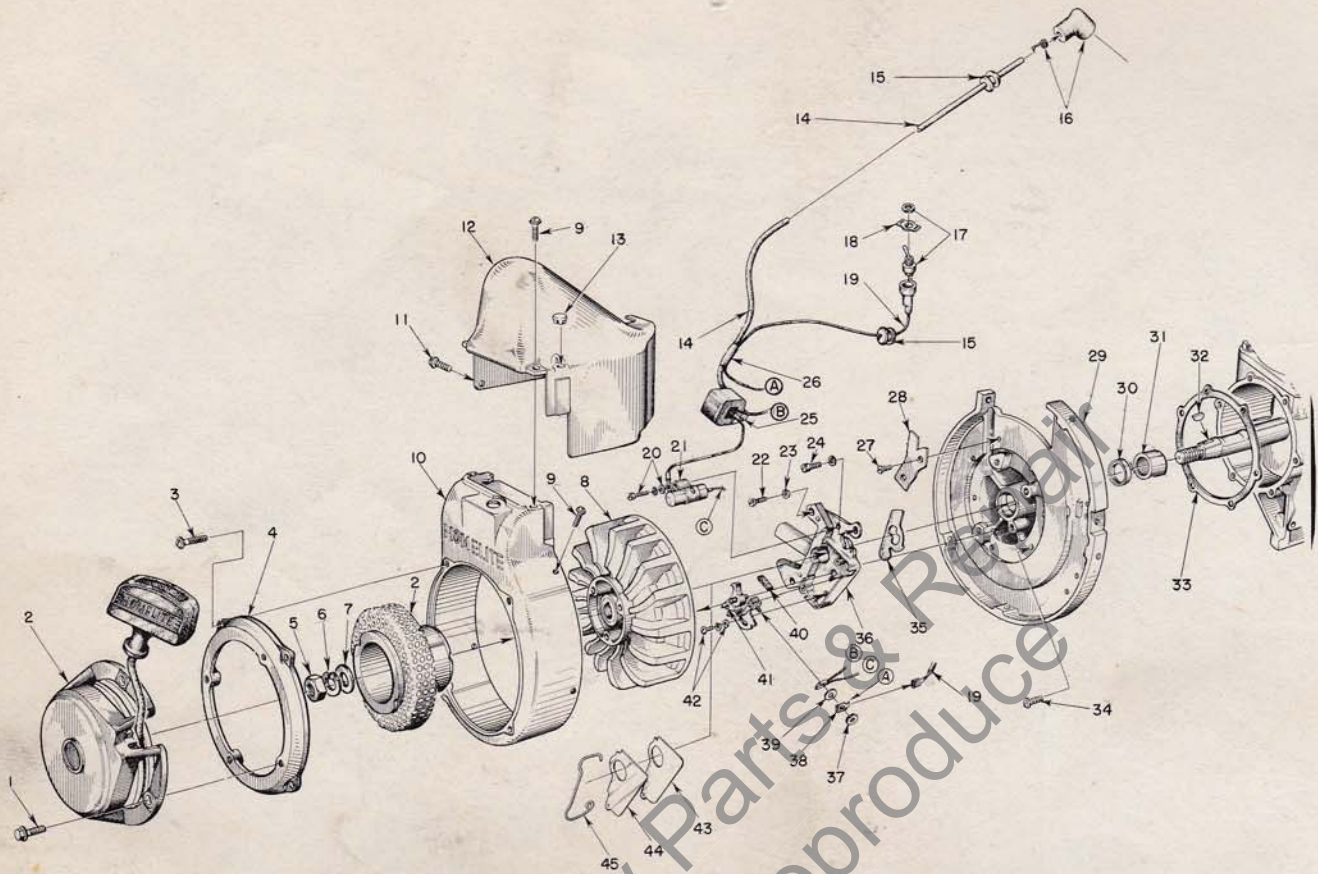


FIGURE 3 — STARTER AND IGNITION

AUGUST 1961

Index No.	Part No.	Description	No. Required	Index No.	Part No.	Description	No. Required
1	80681	SCREW — 1/2-20 x 1/2 hex hd.	4	23	83046	WASHER — #10 lock	3
2	A-56487-1	RECOIL STARTER ASSEMBLY — w/cup and screw	1	24	80595	SCREW — 10-24 x 1/2 fl. hd.	1
	56752	DECAL — Homelite	1	25	55986	COIL (with terminals)	1
3	80576	SCREW — 10-32 x 7/16 pan hd.	4	26	56027	SLEEVE — insulating	1
4	56426	ADAPTER — starter	1	27	80598	SCREW — 6-32 x 5/16 flat hd.	2
5	81110	NUT — 7/16-20 hex jam	1	28	55595-1	CLAMP — lead	1
6	83019	WASHER — 7/16 lock	1	29	A-57809	BACK PLATE	1
7	84055	WASHER — 7/16 flat aluminum	1			Includes	
8	57568	ROTOR	1	30	56134	SEAL — garlock	1
9	80577	SCREW — 8-32 x 3/8 pan hd.	4	31	57533	BEARING — needle	1
10	A-55650-3	SHROUD — air	1	32	75078	KEY — rotor	1
11	80560	SCREW — 8-32 x 1/2 pan hd.	3	33	55049	GASKET — back plate	1
12	55015-3	SHIELD — cylinder	1	34	80576	SCREW — 10-32 x 7/16, pan hd.	6
13	32814	PLUG — button	1	35	56292-A	WASHER — sealing, felt	1
14	55235-A	LEAD — high tension	1	36	57744	BOX — breaker, w/core	1
15	60929	GROMMET	2	37	55982	NUT — terminal	1
16	A-55373	TERMINAL — "Sparky" (cover and spring)	1	38	57733	TAB — ground terminal	1
17	A-57716	SWITCH — toggle (mount on adapter)	1	39	55983	WASHER — terminal	1
		Includes		40	55984	WICK — felt	1
18	55879	PLATE — "on-off"	1	41	A-57745	POINTS (set) — with pivot post	1
19	A-57740	LEAD — ground	1	42	57749	SCREW GROUP — point fastening	1
20	57750	SCREW GROUP — condenser fastening	1	43	55978-2	GASKET — dust cover	1
21	55987	CONDENSER (with terminal)	1	44	55979	COVER — dust	1
22	80660	SCREW — 10-24 x 1/2 fl. hd.	2	45	55980	CLAMP — dust cover	1



# HOMELITE 600 D CHAIN SAW

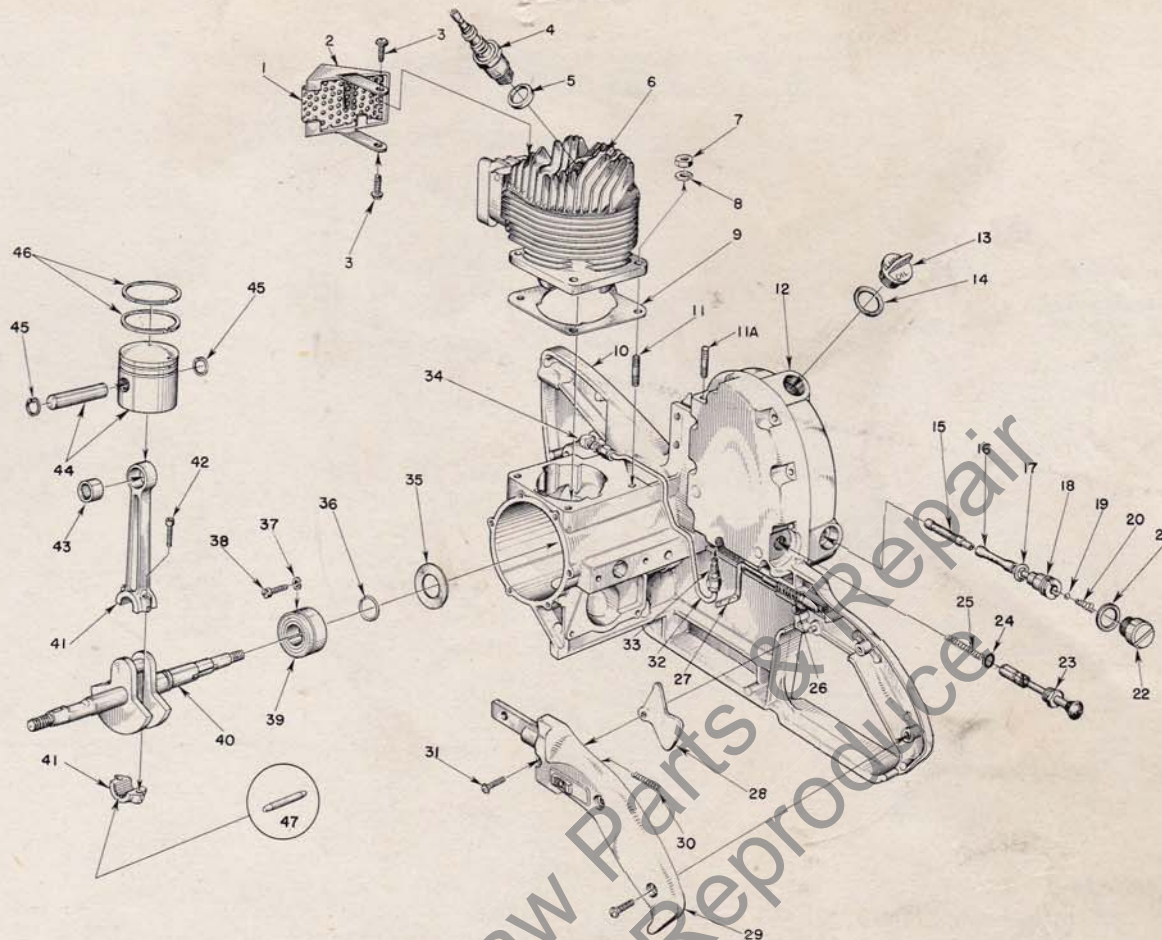


FIGURE 4 — ENGINE

AUGUST 1961

Index No.	Part No.	Description	No. Required	Index No.	Part No.	Description	No. Required
1		ELEMENT (welded to cap)	1	24	74388	"O" RING	1
2	A-56613-A	CAP — exhaust (includes element)	1	25	71762	SPRING	1
3	80625	SCREW — 10-32 x 1/2 pan hd.	2	26	55045-A	SPRING — throttle rod	1
4	40190-S	SPARK PLUG — J61	1	27	A-56449	ROD — throttle (includes 55045-A spring)	1
5	25038	GASKET (included with spark plug)	1	28	AA-55207	TRIGGER — throttle	1
6	56182-A	CYLINDER	1	29	A-55631	COVER — grip	1
7	81065-2	NUT — 1/4-28 hex	4			Includes	
8	83009	WASHER — 1/4 lock	4	AA-55282	LOCK — throttle	1	
9	56864	GASKET — cylinder	1			Includes	
10	A-57640	CRANKCASE w/throttle pivot pin	1	30	72970	SPRING — throttle lock	1
		Includes		31	80560	SCREW — 8-32 x 1/2 pan hd.	4
11	55871	STUD — cylinder	4	32	A-55625	LINE — chain oil	1
11A	57713	STUD — fuel tank	1	33	A-55824	VALVE — check	1
	57175	BOLT — see Fig. 1	2	34	56707	ELBOW — connector, 90°	1
	41738	PIN — see Fig. 1	2	35	55048-A	GASKET — crankcase sealing	1
12	A-55621	COVER — oil reservoir	1	36	56109	RING — snap	1
	55833	GASKET — reservoir cover	1	37	83061	WASHER — lock, special thin	2
	80622	SCREW — self tapping	9	38	19238-A	SCREW — main bearing retaining	2
13	A-56448	CAP — oil	1	39	56097-S	BEARING — main	1
14	72280	GASKET (included with oil cap)	1	40	57550	CRANKSHAFT	1
15	AA-55259-A	FINDER — oil	1	41	AA-55195	CONNECTING ROD	1
16	55133-A	SLEEVE — flexible oil	1			Includes	
17	55110	GASKET	1	42	80805	SCREW — 8-32 x 3/16 socket hd. cap	2
18	55109-A	FITTING — check valve	1	43	55196	BEARING — piston pin	1
19	25527	BALL (3/32 dia.)	1	44	A-55599	PISTON and PIN	1
20	55288-A	SPRING	1			Includes	
21	55107	GASKET	1	45	55095	RING — piston pin retaining	2
22	A-55628	CAP — supply line	1	46	55537	RING — piston	2
23	*A-57834	OIL PUMP PLUNGER ASSEMBLY	1	47	AA-55280	ROLLERS — (set of 27)	1
		Includes					

\*ALTERNATE — Use A-74406 plunger tube and 71764 plunger button.

Always furnish saw model and serial number when ordering parts



Leon's Chainsaw Parts & Repair  
Do Not Sell or Reproduce



# HOMELITE

## Authorized Sales and Service Branches

Homelite sales and service factory branches are located throughout the country. Field representatives and factory-trained servicemen are always available, ready and able to keep your Homelites running in top performance at all times. See the "Yellow Pages", in the telephone directory, for the address and phone number of your nearest Homelite Branch office.

<b>California</b> Alhambra (Los Angeles area) Fresno Sacramento S. San Francisco	<b>Missouri</b> Kansas City St. Louis	<b>Texas</b> Dallas Lufkin
<b>Colorado</b> Denver	<b>Nebraska</b> Omaha	<b>Utah</b> North Salt Lake
<b>Connecticut</b> Byram Hartford	<b>New Jersey</b> North Arlington Woodbridge	<b>Virginia</b> Alexandria Richmond Roanoke
<b>Florida</b> Jacksonville Miami	<b>New York</b> Buffalo Latham (Albany area) Rochester Syracuse	<b>Washington</b> Seattle Spokane
<b>Georgia</b> Atlanta	<b>North Carolina</b> Charlotte Raleigh	<b>West Virginia</b> Charleston Clarksburg
<b>Illinois</b>  Stone Park (Chicago area)	<b>Ohio</b> Cincinnati Cleveland Toledo	<b>Wisconsin</b> Milwaukee
<b>Indiana</b> Indianapolis	<b>Oklahoma</b> Oklahoma City	<b>DOMINION OF CANADA</b> <b>TERRY MACHINERY CO., LTD.</b>
<b>Louisiana</b> Bossier City Metairie	<b>Oregon</b> Portland	<b>Quebec</b> Montreal Quebec City
<b>Maine</b> Orono	<b>Pennsylvania</b> Altoona Erie Harrisburg Hazleton Malvern Philadelphia Pittsburgh	<b>Alberta</b> Edmonton
<b>Maryland</b> Baltimore	<b>Tennessee</b> Knoxville Memphis	<b>British Columbia</b> Vancouver Prince George
<b>Massachusetts</b> Allston (Boston area)		<b>New Brunswick</b> Moncton
<b>Michigan</b> Detroit Grand Rapids		<b>Ontario</b> Ottawa Toronto Port Arthur
<b>Minnesota</b> St. Paul		

### \* SPECIAL TOOLS

Part No.	Description
AA-22560	MAGNETO ROTOR PULLER
A-23131	CLUTCH SPIDER PULLER
23136	BODY — assemblinr, fixture
23138-1	ADAPTER — bearing assembly
A-23137	JACK SCREW ASSEMBLY
22812-1	PLATE — shaft aligning

Part No.	Description
23233	PLUG — garlock seal (back plate)
23391-1	ASSEMBLY TOOL — needle bearing
22828	PLIERS — Tru-arc (piston)
23528	WRENCH — socket screw (conn. rod)
23139	ASSEMBLY TOOL — clutch drum bearing
22771	SPRAY CAN — red paint

\* When ordered only

Combination Wrench #22808 supplied with saw



**You'll  
SPEED WORK  
and make  
MORE MONEY  
with...**



**HOMELITE**  
SELF-PRIMING PUMPS



**HOMELITE**  
DEPENDABLE GENERATORS



**HOMELITE**  
POWERFUL ONE-MAN CHAIN SAWS



**HOMELITE**  
ONE-MAN CONCRETE VIBRATORS



**HOMELITE** — BOSCH (Germany)  
ELECTRIC BUILDER'S HAMMERS

**All Powered By Famous HOMELITE Engines**

Homelite's two-cycle gasoline engines are the most efficient and dependable units of their kind ever built. Their two-cycle design, developed to perfection by Homelite engineers over the past 35 years, gives maximum power for the least weight because power is produced at every piston down stroke. As an added advantage, this design requires fewer moving parts which means greater dependability and lower maintenance

Printed in United States of America

Part No. 23470-A

8M-8-61

**HOMELITE**

A **textron** DIVISION

PORT CHESTER, N. Y.

A TRUSPECTIVE Publication by  
The PURNELL COMPANY  
Boston, Mass.