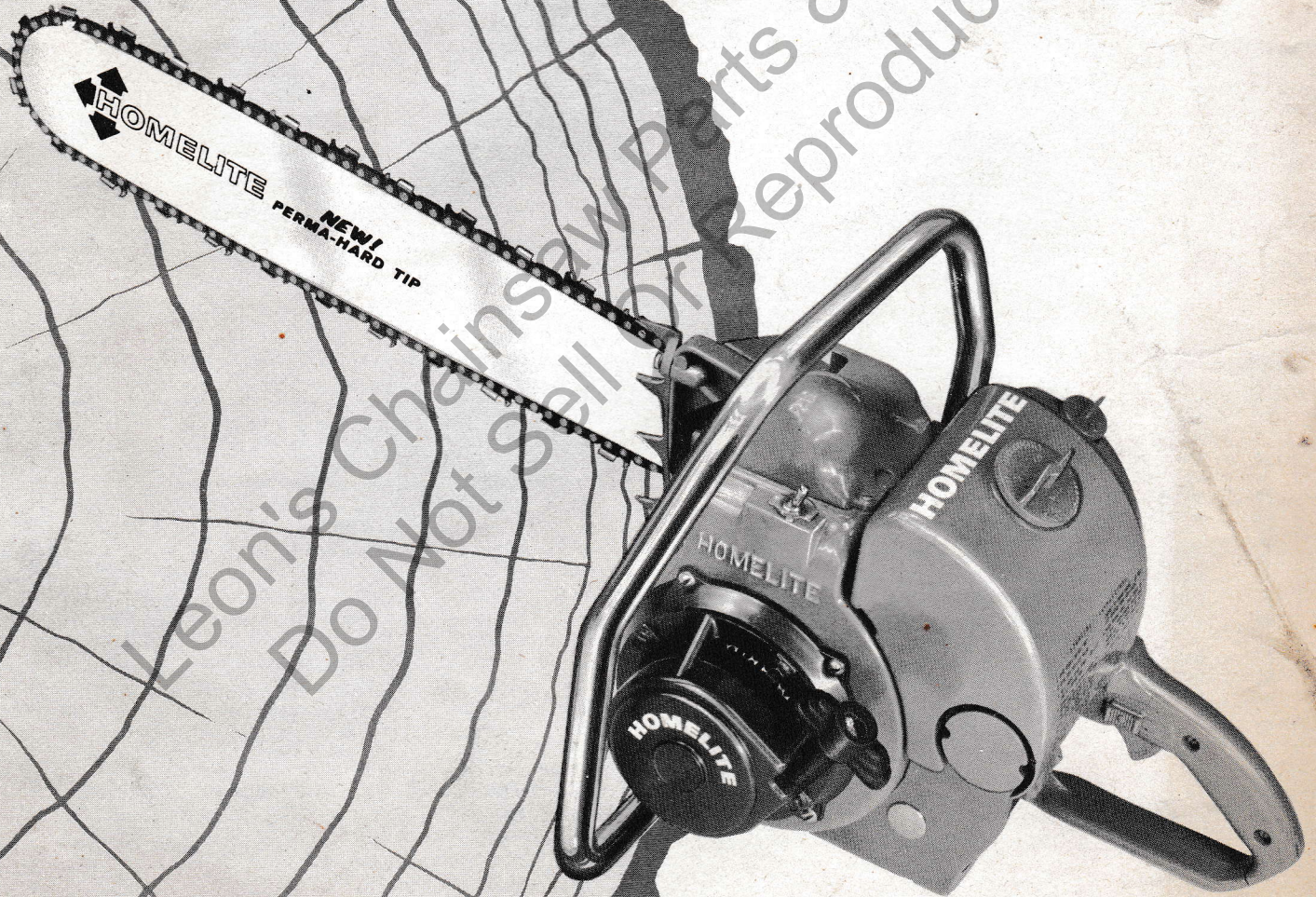


# HOMELITE CHAIN SAW



## PARTS LIST

(Identified by "A" preceding serial number)

# HOMELITE DIRECT DRIVE CHAIN SAW

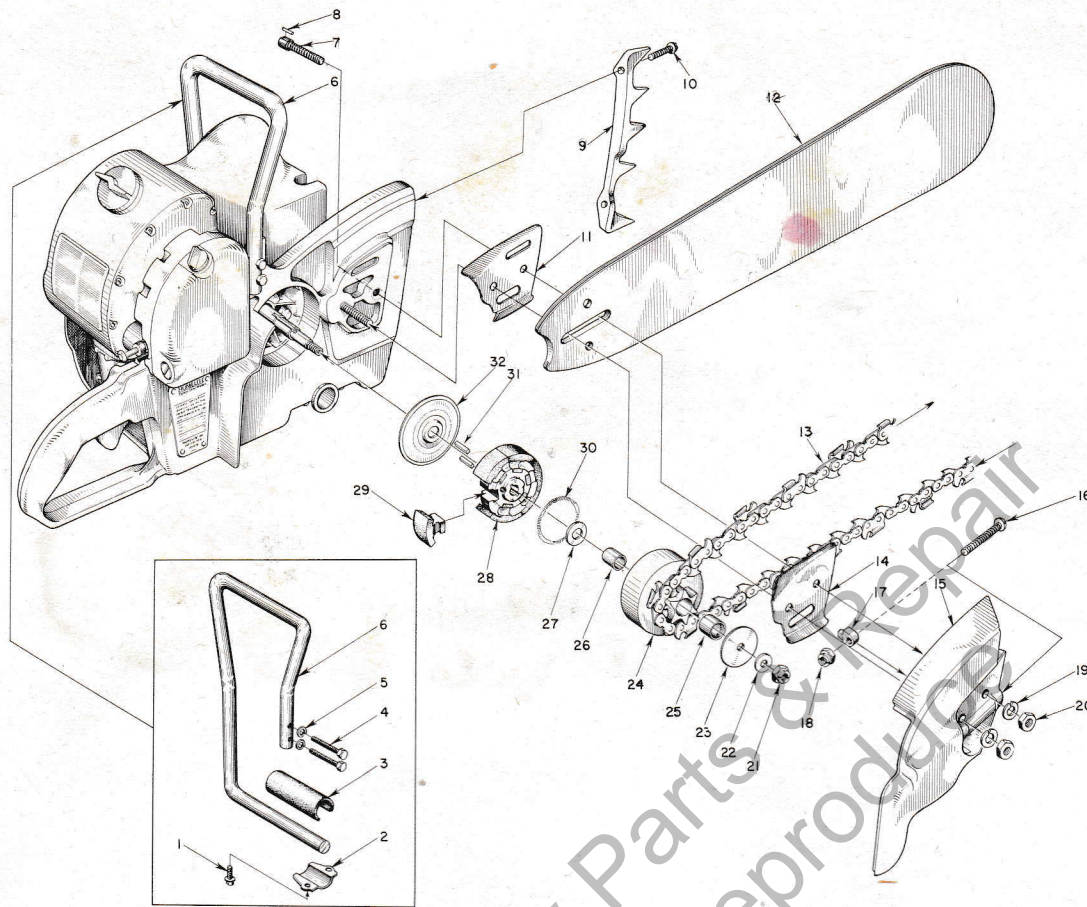


FIGURE 1 — SAW PARTS

AUGUST 1961

Index No.	Part No.	Description	No. Required	Index No.	Part No.	Description	No. Required
1	80581	SCREW — 1/4-20 x 5/8	2	14	56872-A	PLATE — guide bar, outer	1
2	55614	CLAMP — handle bar	1	15	A-55668	COVER — drive case	1
3	55685	CUSHION — handle bar	1			Includes	
4	80087	SCREW — 5/16-18 x 1 1/2 hex hd.	2	16	80617	SCREW — 5/16-18 x 2 rd. hd.	1
5	83003	WASHER — 3/8 lock	2	17	55613	PIN — guide bar adjusting	1
6	A-57836	HANDLE	1	18	81123	NUT — 5/16 hex-lock	1
7	57175	BOLT — guide bar	2	19	83018	WASHER — 3/8, lock	2
8	41738	PIN — guide bar bolt	2	20	81089	NUT — 3/8-16 hex	2
9	55632	PLATE — spiked bumper	1	21	81116	NUT — 3/8-24 flex-lock	1
10	80573	SCREW — 1/4-20 x 1 3/8 hex hd.	2	22	84010	WASHER — 3/8, flat	1
11	56871	PLATE — guide bar, inner	1	23	55163-1	WASHER — thrust	1
		INDUCTION HARDENED HOMELITE GUIDE BARS		24	*A-57363	SPROCKET & DRUM — std., 7 tooth (7/16" pitch chain)	1
12	GW-1416	14" BAR — Homelite, welded nose	1			Includes	
	GW-1719	17" BAR — Homelite, welded nose	1	25	77403	BEARING — needle	1
	GW-2123	21" BAR — Homelite, welded nose	1	26	55661	RACE — inner	1
	HT-1416	14" BAR — Homelite	1	27	55660-1	WASHER — thrust	1
		7/16" pitch — HOMELITE CHAIN — .063 gauge (Standard)		28	55075-3	SPIDER — clutch	1
13	HC-6250-L	14" CHAIN — with kit	1	29	55076-1	SHOE — clutch	6
	HC-6258-L	17" CHAIN — with kit	1	30	55123-C	SPRING — clutch	2
	HC-6266-L	21" CHAIN — with kit	1	31	55225-1	KEY — clutch	2
		1/2" pitch — HOMELITE CHAIN — .063 gauge (Optional)		32	56101-A	COVER — clutch	1
	HC-1044-L	14" CHAIN — with kit	1				
	HC-1051-L	17" CHAIN — with kit	1				
	HC-1058-L	21" CHAIN — with kit	1				
		.404 pitch — HOMELITE CHAIN — .063 gauge (Optional)					

\*Optional

A-56019	SPROCKET & DRUM — 7 tooth (1/2" pitch chain) Includes BEARING — needle
55664-S	

A-57347	SPROCKET & DRUM — 8 tooth (.404 pitch chain) Includes BEARING — needle
55664-S	

\*Check type and number of teeth on sprocket before ordering.

# HOMELITE DIRECT DRIVE CHAIN SAW

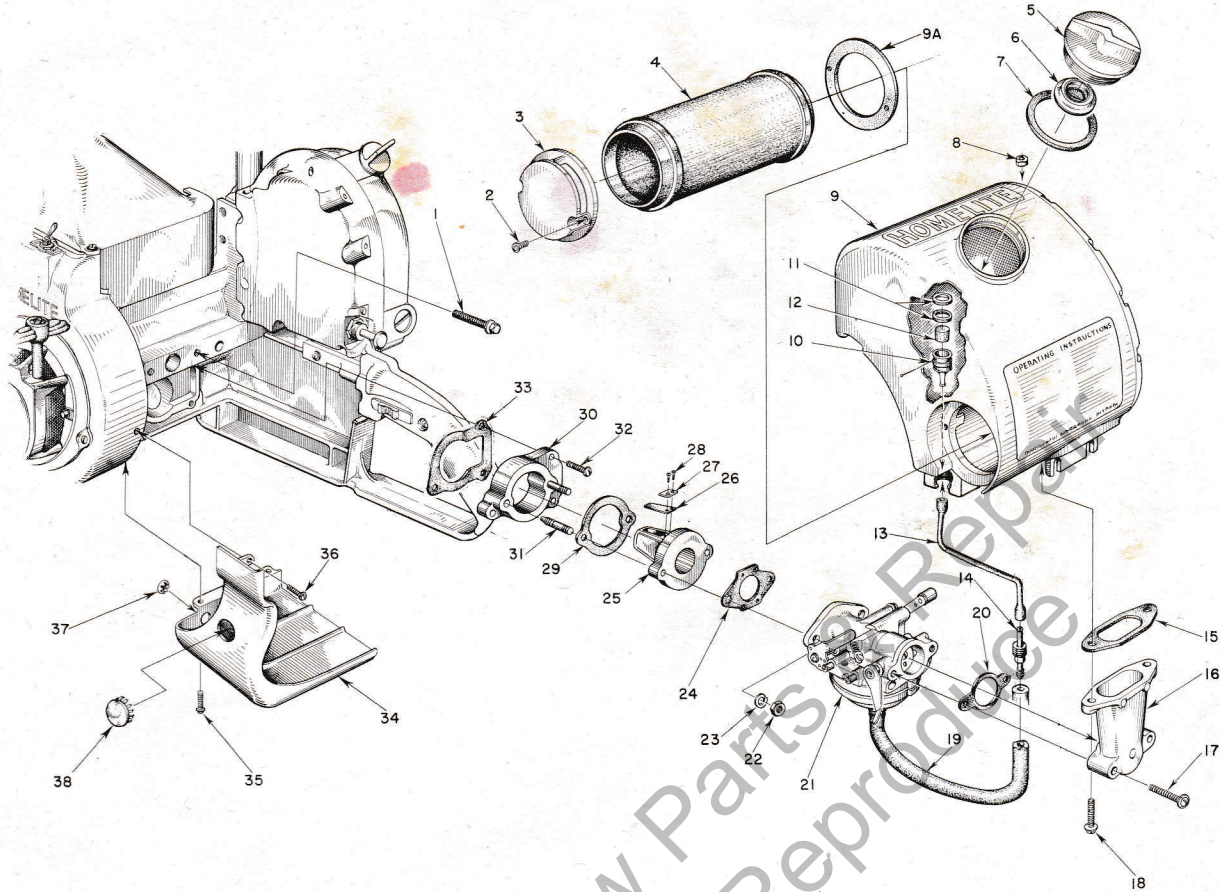


FIGURE 2 — FUEL SYSTEM

AUGUST 1961

Index No.	Part No.	Description	No. Required
1	80581	SCREW — 1/4-20 x 3/8 hex hd.	2
2	80630	SCREW — 6-32 x 1/2 pan hd.	2
3	55494	CAP — air filter	1
4	57337	AIR FILTER	1
5	A-56907	CAP — fuel	1
6	56865	VALVE — relief	1
7	56335	GASKET	1
8	81108	NUT — 1/4-20 hex	1
9	A-57781	FUEL TANK	1
9A	57041	GASKET — cement to tank	1
	56596-A	DECAL (Instructions)	1
	56400	DECAL (Homelite)	1
	57814	DECAL (ZIP-6)	1
	57108	DECAL (600 D)	1
10	A-56200	STRAINER — outlet, w/brass nail	1
		Includes	
11	56196	BUMPER — rubber	2
12	74374	FILTER — felt	1
13	55805	SLEEVE — flexible	1
14	57652	FITTING — fuel line connection	1
15	55059	GASKET — adapter	1
16	55019-3	ADAPTER — air cleaner	1
17	80624	SCREW — 10-32 x 1 pan hd.	2

Index No.	Part No.	Description	No. Required
18	80572	SCREW — 10-32 x 5/8 pan hd.	2
19	57763	LINE — fuel	1
20	72971-1	GASKET — air elbow	1
21	A-56484	CARBURETOR — Til, HL-46B	1
	77343	REPAIR PARTS KIT (RK-378)	1
	77342	GASKET SET (GS-145) — part of 77343	1
22	81013	NUT — 1/4-20 hex	2
23	83009	WASHER — 1/4 lock	2
24	55553	GASKET — carburetor	1
25	55932	ADAPTER — reed valve	1
26	55941	REED	4
27	55942	PLATE — reed	4
28	80658	SCREW — 4-40 x 3/16 pan hd.	8
29	55946	GASKET — adapter-spacer	1
30	55934	SPACER — reed adapter	1
31	55945	STUD	2
32	80583	SCREW — 10-32 x 3/4 pan hd.	3
33	55116	GASKET — reed valve adapter	1
34	55512-3	SHIELD — carburetor	1
35	80576	SCREW — 10-32 x 3/16 pan hd.	2
36	80560	SCREW — 8-32 x 1/2 pan hd.	1
37	55681	PLUG — button	1
38	29187	PLUG — button	1

Always furnish saw model and serial number when ordering parts.

# HOMELITE DIRECT DRIVE CHAIN SAW

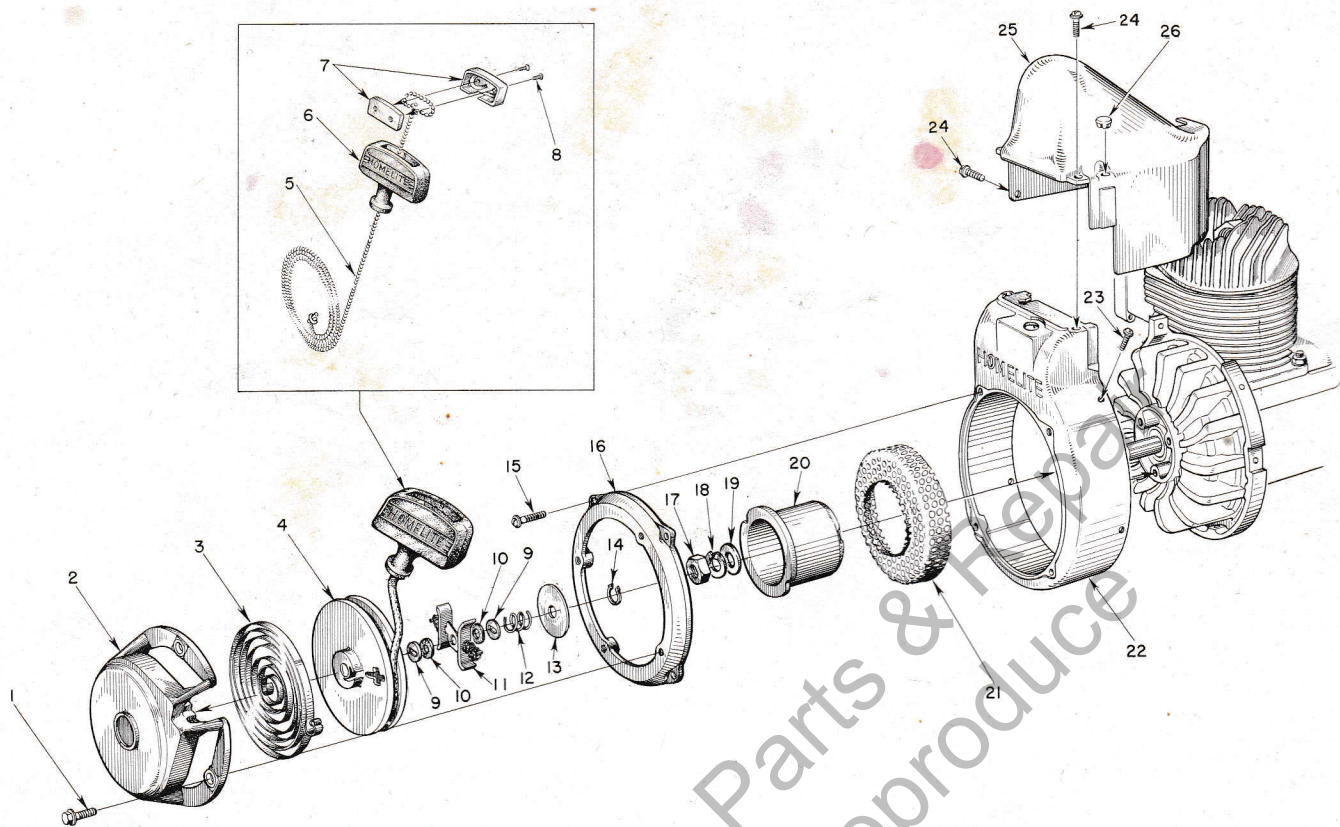


FIGURE 3 — STARTER PARTS

AUGUST 1961

Index No.	Part No.	Description	No. Required	Index No.	Part No.	Description	No. Required
1	80681	SCREW — 1/2-20 x 1/2 hex hd.	4	13	76436	WASHER — brake retainer	1
2	56450-2A	COVER — pulley	1	14	76437	RING — retaining	1
3	56451	SPRING — rewind	1	15	80576	SCREW — 10-32 x 3/16 pan hd.	4
4	56452	PULLEY — starter	1	16	56426	ADAPTER — starter	1
5	55898	ROPE — starting	1	17	81110	NUT — 7/16-20 hex jam	1
6	55937	GRIP — starting	1	18	83019	WASHER — 7/16 lock	1
7	A-56081	INSERT — grip, w/screws Includes	1	19	84055	WASHER — 7/16 flat aluminum	1
8	80619	SCREW	2	20	56441	CUP — starter	1
9	56456	WASHER — brake	2	21	56442	SCREEN — starter	1
10	56457	WASHER — fibre	2	22	A-55650-3	SHROUD — air	1
11	A-57647	FRICTION SHOE ASSEMBLY	1	23	80577	SCREW — 8-32 x 3/8 pan hd.	4
12	56455	SPRING — brake	1	24	80560	SCREW — 8-32 x 1/2 pan hd.	3
				25	55015-3	SHIELD — cylinder	1
				26	32814	PLUG — button	1

NOTE: Complete rewind starter assembly A-56487-1 composed of index #20, #21, and all parts drawn on center line between and including index #2 and #14 is available.

# HOMELITE DIRECT DRIVE CHAIN SAW

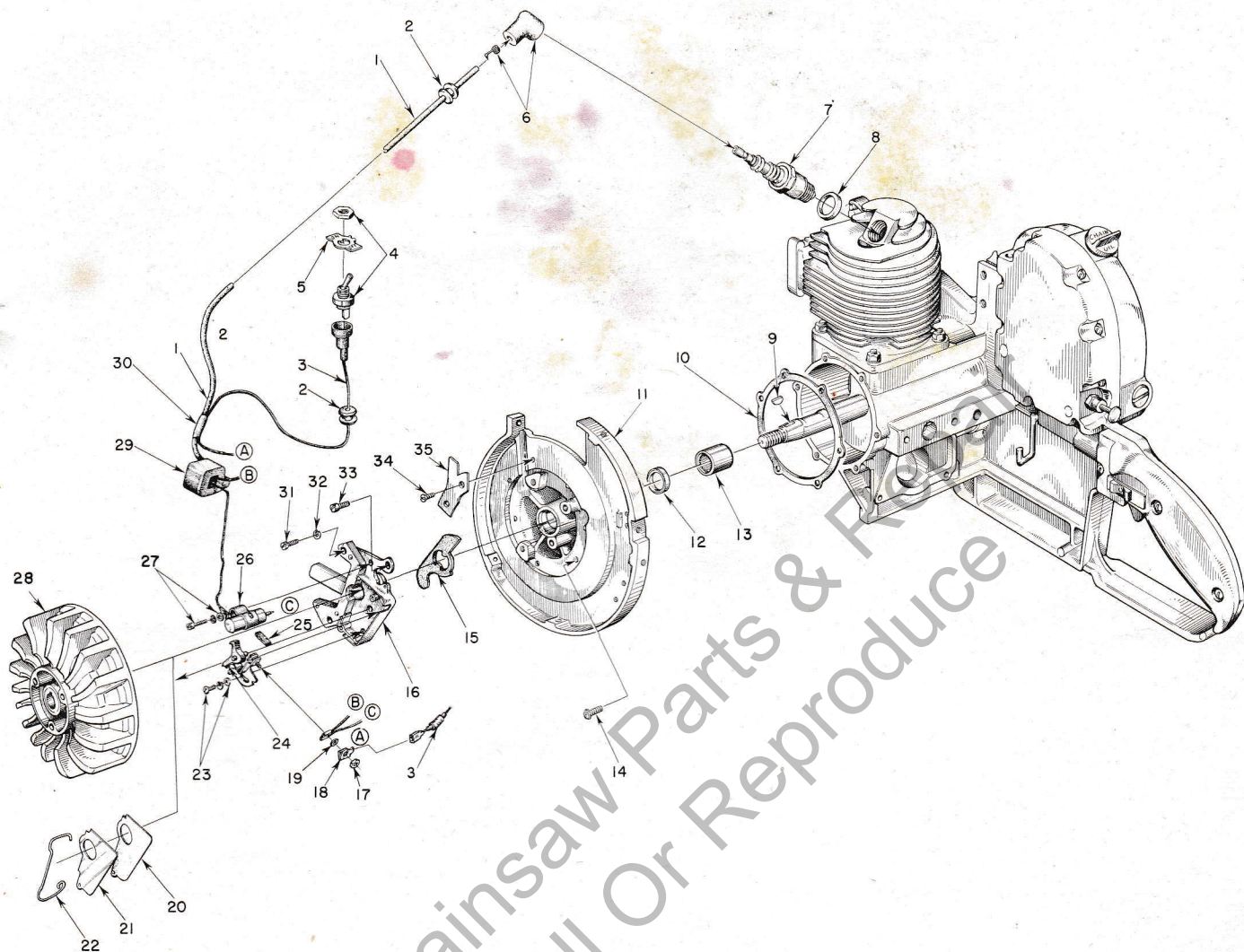


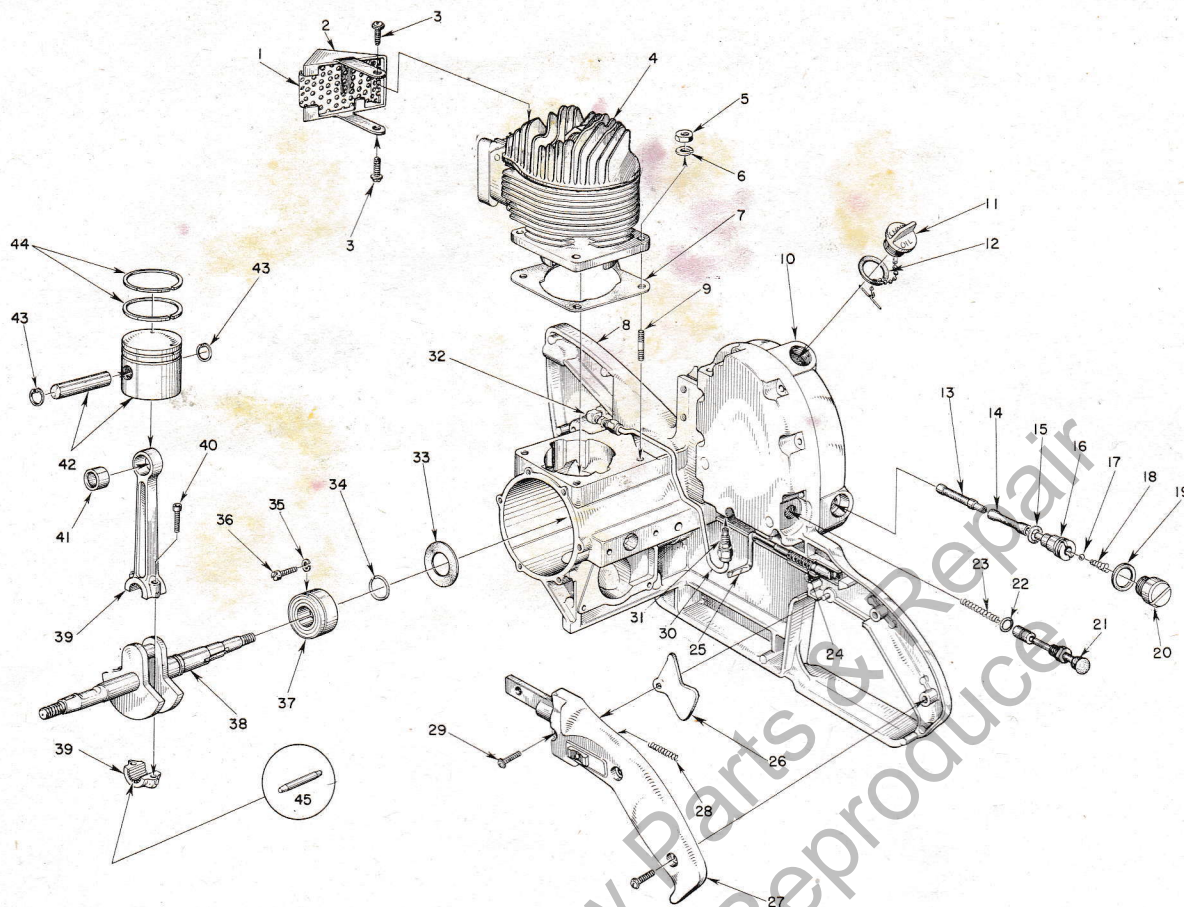
FIGURE 4 — IGNITION SYSTEM

AUGUST 1961

Index No.	Part No.	Description	No. Required	Index No.	Part No.	Description	No. Required
1	55235-A	LEAD — high tension .....	1	17	55982	NUT — terminal .....	1
2	60929	GROMMET .....	2	18	57733	TAB — ground .....	1
3	A-57740	LEAD — ground .....	1	19	55983	WASHER — terminal .....	1
4	A-57716	SWITCH — toggle .....	1	20	55978-2	GASKET — dust cover .....	1
		Includes		21	55979	COVER — dust .....	1
5	55879	PLATE — "on-off" .....	1	22	55980	CLAMP — dust cover .....	1
6	A-55373	TERMINAL — "Sparky" (cover and spring) .....	1	23	57749	SCREW GROUP — point fastening .....	1
7	40190-S	SPARK PLUG — J6J .....	1	24	A-57745	POINTS — (set) .....	1
	71530-S	SPARK PLUG — HO-8A (optional) .....	1	25	55984	WICK — felt .....	1
8	25038	GASKET (included with spark plug) .....	1	26	55987	CONDENSER (with terminal) .....	1
9	75078	KEY — rotor .....	1	27	57750	SCREW GROUP — condenser fastening .....	1
10	55049	GASKET — back plate .....	1	28	57568	ROTOR .....	1
11	A-57809	BACK PLATE .....	1	29	55986	COIL — (with ground terminal) .....	1
		Includes		30	56027	SLEEVE — insulating .....	1
12	56134	SEAL — garlock .....	1	31	80660	SCREW — 10-24 x 1/2 fil. hd. ....	2
13	57533	BEARING — needle .....	1	32	83046	WASHER — #10 Lock .....	3
14	80576	SCREW — 10-32 x 3/16, pan hd. ....	6	33	80595	SCREW — 10-24 x 1/2 fil. hd. ....	1
15	56292-A	WASHER — sealing, felt .....	1	34	80598	SCREW — 6-32 x 3/16 flat hd. ....	2
16	57744	BOX — breaker, w/core .....	1	35	55595-1	CLAMP — lead .....	1

Always furnish saw model and serial number when ordering parts.

# HOMELITE DIRECT DRIVE CHAIN SAW



**FIGURE 5 — ENGINE**

AUGUST 1961

Index No.	Part No.	Description	No. Required	Index No.	Part No.	Description	No. Required
1		ELEMENT (welded to cap) .....	1	23	71762	SPRING .....	1
2	A-56613-A	CAP — exhaust (includes element) .....	1	24	55045-A	SPRING — throttle rod .....	1
3	80625	SCREW — 10-32 x 1/2 pan hd. ....	2	25	A-56449	ROD — throttle (includes 55045-A spring) ....	1
4	56182-A	CYLINDER .....	1	26	AA-55207	TRIGGER — throttle .....	1
5	81065-2	NUT — 1/4-28 hex .....	4	27	A-55631	COVER — grip .....	1
6	83009	WASHER — 1/4 lock .....	4			Includes	
7	56864	GASKET — cylinder .....	1	AA-55282	LOCK — throttle .....	1	
8	A-57640	CRANKCASE w/throttle pivot pin .....	1			Includes	
		Includes		28	72970	SPRING — throttle lock .....	1
9	55871	STUD — cylinder .....	4	29	80560	SCREW — 8-32 x 1/2 pan hd. ....	4
	57175	BOLT — guide bar (see fig. 1) .....	2	30	A-55625	LINE — chain oil .....	1
	41738	PIN — bolt (see fig. 1) .....	2	31	A-55824	VALVE — check .....	1
10	A-55621	COVER — oil reservoir .....	1	32	56707	ELBOW — connector, 90° .....	1
	55833	GASKET — reservoir cover .....	1	33	55048-A	GASKET — crankcase sealing .....	1
	80622	SCREW — self tapping .....	9	34	56109	RING — snap .....	1
11	A-56448	CAP — oil .....	1	35	83061	WASHER — lock, special thin .....	2
12	72280	GASKET (included with oil cap) .....	1	36	19238-A	SCREW — main bearing retaining .....	2
13	AA-55259-A	FINDER — oil .....	1	37	56097-S	BEARING — main .....	1
14	55133-A	SLEEVE — flexible oil .....	1	38	57550	CRANKSHAFT .....	1
15	55110	GASKET .....	1	39	AA-55195	CONNECTING ROD .....	1
16	55109-A	FITTING — check valve .....	1			Includes	
17	25527	BALL (3/32 dia.) .....	1	40	80805	SCREW — 8-32 x 3/16 socket hd. cap .....	2
18	55288-A	SPRING .....	1	41	55196	BEARING — piston pin .....	1
19	55107	GASKET .....	1	42	A-55599	PISTON and PIN .....	1
20	A-55628	CAP — supply line .....	1			Includes	
21	A-57834	OIL PUMP PLUNGER ASSEMBLY .....	1	43	55095	RING — piston pin retaining .....	2
		Includes		44	55537	RING — piston .....	2
22	74388	"O" RING .....	1	45	AA-55280	ROLLERS (set of 27) .....	1

\*Not supplied separately.

# HOMELITE

## Authorized Sales and Service Branches

Homelite sales and service factory branches are located throughout the country. Field representatives and factory-trained servicemen are always available, ready and able to keep your Homelites running in top performance at all times. See the "Yellow Pages", in the telephone directory, for the address and phone number of your nearest Homelite Branch office.

<b>California</b> Alhambra (Los Angeles area) Fresno Sacramento S. San Francisco	<b>Missouri</b> Kansas City St. Louis	<b>Texas</b> Dallas Lufkin
<b>Colorado</b> Denver	<b>Nebraska</b> Omaha	<b>Utah</b> North Salt Lake
<b>Connecticut</b> Byram Hartford	<b>New Jersey</b> North Arlington Woodbridge	<b>Virginia</b> Alexandria
<b>Florida</b> Jacksonville Miami	<b>New York</b> Buffalo Latham (Albany area) Rochester Syracuse	<b>Washington</b> Seattle Spokane
<b>Georgia</b> Atlanta	<b>North Carolina</b> Charlotte Raleigh	<b>West Virginia</b> Charleston Clarksburg
<b>Illinois</b>  Stone Park (Chicago area)	<b>Ohio</b> Cincinnati Cleveland Toledo	<b>Wisconsin</b> Milwaukee
<b>Indiana</b> Indianapolis	<b>Oklahoma</b> Oklahoma City	<b>DOMINION OF CANADA</b> <b>TERRY MACHINERY CO., LTD.</b>
<b>Louisiana</b> Bossier City Metairie	<b>Oregon</b> Portland	<b>Quebec</b> Montreal Quebec City
<b>Maine</b> Orono	<b>Pennsylvania</b> Altoona Erie Harrisburg Hazleton Malvern Philadelphia Pittsburgh	<b>Alberta</b> Edmonton
<b>Maryland</b> Baltimore	<b>Tennessee</b> Knoxville Memphis	<b>British Columbia</b> Vancouver Prince George
<b>Massachusetts</b> Allston (Boston area)		<b>New Brunswick</b> Moncton
<b>Michigan</b> Detroit Grand Rapids		<b>Ontario</b> Ottawa Toronto Port Arthur
<b>Minnesota</b> St. Paul		

### \* SPECIAL TOOLS

Part No.	Description	Part No.	Description
AA-22560	MAGNETO ROTOR PULLER	23136	BODY ASSEMBLY FIXTURE
22812-1	PLATE — shaft aligning	A-23137	JACK SCREW ASSEMBLY
23528	WRENCH — Allen (conn. rod)	23138-1	ADAPTER — bearing assembly
23233	ASSEMBLY PLUG — back plate seal	23139	ASSEMBLY TOOL — clutch drum bearing
23391-1	ASSEMBLY TOOL — back plate bearing	22771	SPRAY CAN — red paint
A-23131	CLUTCH SPIDER PULLER		

\*When ordered only

Combination Wrench #22808 supplied with saw

**You'll  
SPEED WORK  
and make  
MORE MONEY  
with...**



**HOMELITE**  
SELF-PRIMING PUMPS



**HOMELITE**  
DEPENDABLE GENERATORS



**HOMELITE**  
POWERFUL ONE-MAN CHAIN SAWS



**HOMELITE**  
ONE-MAN CONCRETE VIBRATORS



**HOMELITE** — BOSCH (Germany)  
ELECTRIC BUILDER'S HAMMERS

**All Powered By Famous HOMELITE Engines**

Homelite's two-cycle gasoline engines are the most efficient and dependable units of their kind ever built. Their two-cycle design, developed to perfection by Homelite engineers over the past 35 years, gives maximum power for the least weight because power is produced at every piston down stroke. As an added advantage, this design requires fewer moving parts which means greater dependability and lower maintenance