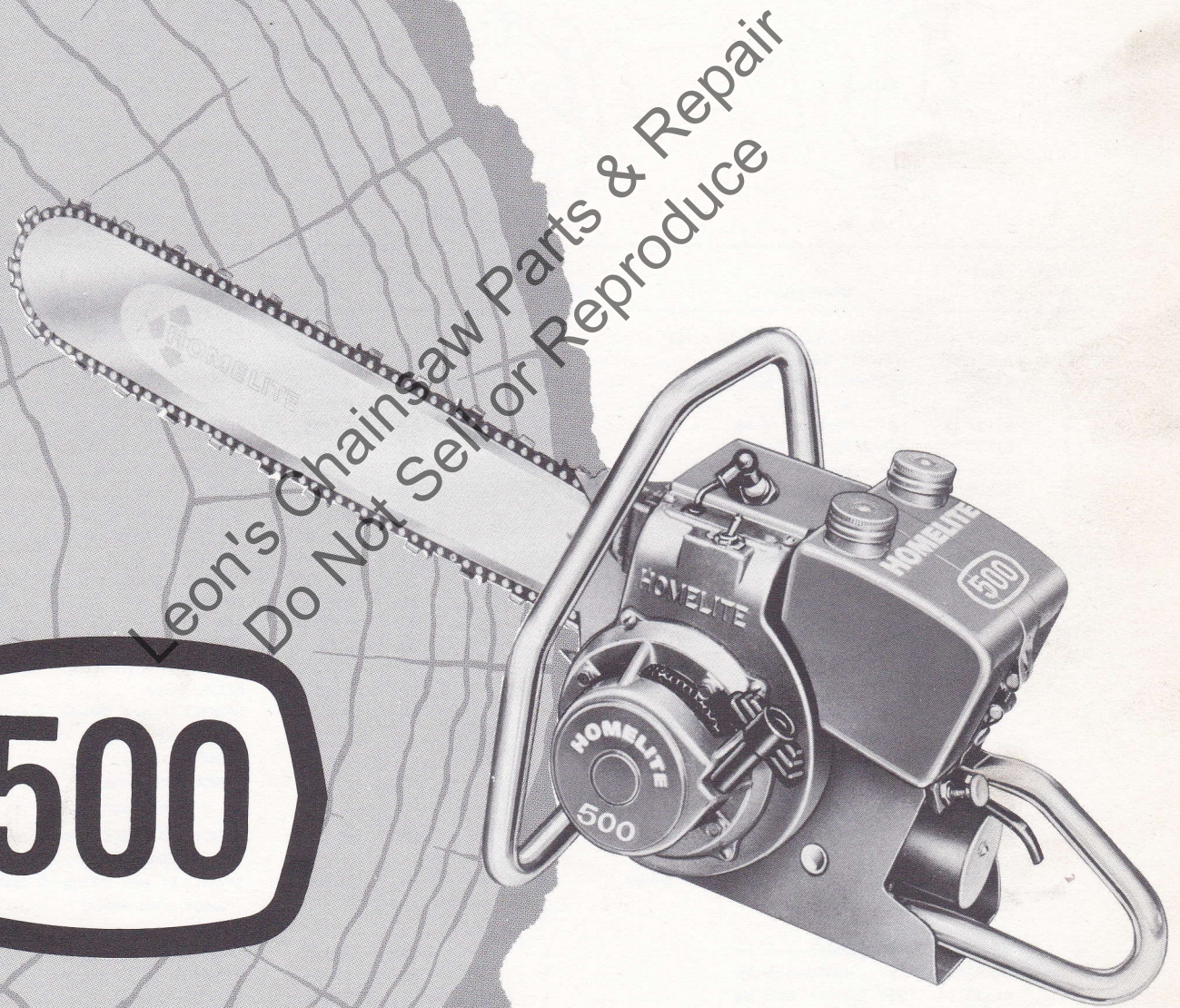


# HOMELITE CHAIN SAW



Leon's Chainsaw Parts & Repair  
Do Not Sell or Reproduce

**500**

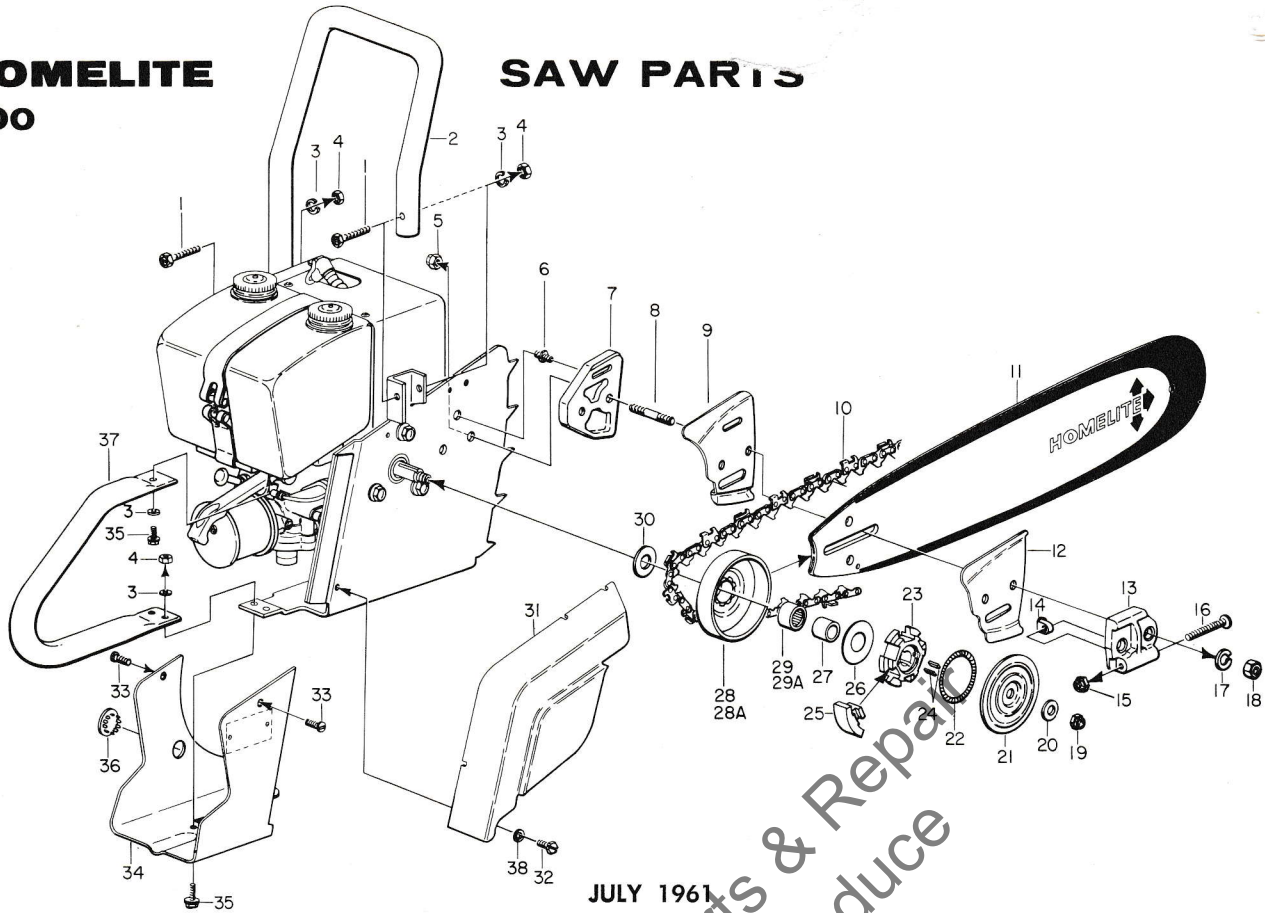
## PARTS LIST

1961 MODELS ARE IDENTIFIED BY "A"  
PRECEDING THE SERIAL NUMBER



# HOMELITE 500

# SAW PARTS



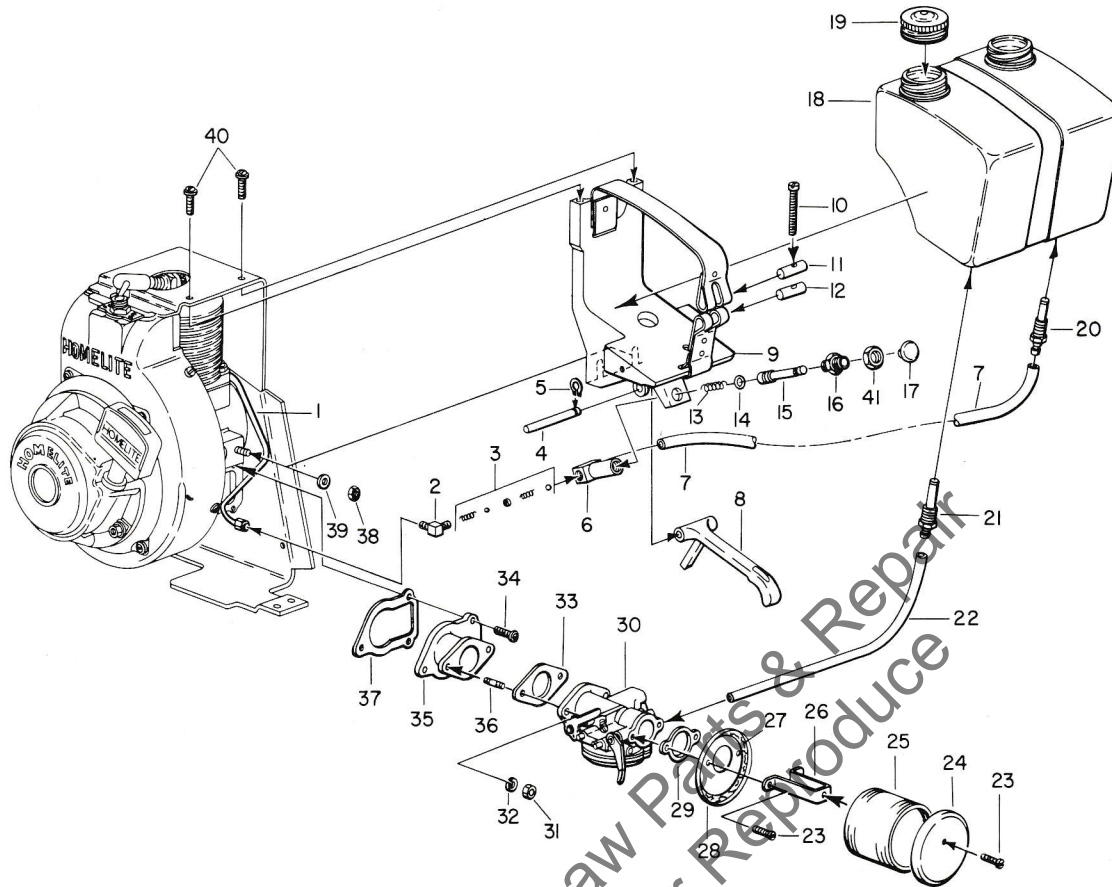
JULY 1961

Index No.	Part No.	Description	No. Required	Index No.	Part No.	Description	No. Required
1	80447	SCREW—hex hd., 1/4-20 x 1 3/8" .....	2	A-55591-2	ADJUSTING PLATE ASSEMBLY .....	Includes	1
2	A-57125	HANDLE BAR .....	1				
3	83009	WASHER—lock, 1/4" .....	3	13	55551-B	PLATE .....	1
4	81013	NUT—hex, 1/4-20 .....	3	14	55552	PIN—guide bar adjusting .....	1
5	81137	NUT—Flexlock, 3/8-16 .....	2	15	81123	NUT—lock, hex, 5/16-18 .....	1
6	31733-1	ADAPTER—oil line .....	1	16	80617	SCREW—rd. hd., 5/16-18 x 2" .....	1
7	56701-A	PAD—guide bar .....	1	17	83018	WASHER—lock, 3/8" .....	2
8	55606	STUD .....	2	18	81089	NUT—hex, 3/8-16" .....	2
9	56871	PLATE—guide bar (inner) .....	1	19	81116	NUT, Flexlock, 3/8-24 .....	1
		1/16" pitch—HOMELITE CHAIN—.063 gauge (STANDARD)		20	55036	WASHER—clutch retaining .....	1
10	HC-6250-L	14" CHAIN—with kit .....	1	21	56238-A	COVER—clutch .....	1
	HC-6258-L	17" CHAIN—with kit .....	1	22	55123-C	SPRING—clutch .....	2
	HC-6266-L	21" CHAIN—with kit .....	1	23	55075-3	SPIDER—clutch .....	1
		1/2" pitch—HOMELITE CHAIN—.063 gauge (OPTIONAL)		24	55225-1	KEY .....	2
	HC-1044-L	14" CHAIN—with kit .....	1	25	55076-1	SHOE—clutch .....	3
	HC-1051-L	17" CHAIN—with kit .....	1	26	56132	WASHER—thrust (outer) .....	1
	HC-1058-L	21" CHAIN—with kit .....	1	27	56231	RACE—inner .....	1
		.404 pitch—HOMELITE CHAIN—.063 gauge (OPTIONAL)		28	†A-57364	SPROCKET and DRUM—7 tooth (1/16" pitch chain) .....	1
	HC-5254-L	14" CHAIN—with kit .....	1			Includes	
	HC-5263-L	17" CHAIN—with kit .....	1	29	77442	BEARING—needle .....	1
	HC-5271-L	21" CHAIN—with kit .....	1			(OPTIONAL)	
		INDUCTION HARDENED HOMELITE GUIDE BARS		28A	†A-56615	SPROCKET and DRUM—7 tooth (1/2" pitch chain) .....	1
11	GW-1416	14" BAR—HOMELITE, welded nose .....	1			Includes	
	GW-1719	17" BAR—HOMELITE, welded nose .....	1	†A-57341	SPROCKET and DRUM—8 tooth (.404 pitch chain) .....	1	
	GW-2123	21" BAR—HOMELITE, welded nose .....	1			Include	
	HT-1416	14" BAR—HOMELITE .....	1	29A	56230	BEARING—needle .....	1
12	56872-A	PLATE—guide bar (outer) .....	1	30	56236	WASHER—thrust (inner) .....	1
				31	57122	GUARD—chain .....	1
					56766-A	DECAL—starting instructions .....	1
				32	80837	SCREW—hex hd., slotted, 12-24 x 3/8" ..	2
				33	80625	SCREW—pan hd., 10-32 x 1/2" .....	2
				34	57121	GUARD—rear .....	1
				35	80049	SCREW—hex hd., 1/4-20 x 5/8" .....	3
				36	29187	PLUG—button .....	1
				37	57124	HANDLE—throttle .....	1
				38	84006	WASHER—flat, 1/4" .....	2

† Check type and number of teeth on sprocket before ordering.

# HOMELITE 500

Always give model and serial number of unit when ordering parts.  
1961 Models are identified by "A" preceding the serial number



JULY 1961

Index No.	Part No.	Description	No. Required	Index No.	Part No.	Description	No. Required	
1	A-57145	OIL LINE ASSEMBLY	1	21	57138	ADAPTER—screen	1	
2	57288	CONNECTOR ELBOW	1	22	76178	FUEL LINE (tank to carburetor)	1	
3	A-57615	OIL PUMP KIT—with balls, springs, spacers	1	23	80579	SCREW—pan hd., 10-32 x 3/8"	3	
4	57139-A	FULCRUM PIN	1	24	A-57306	COVER—filter (front) (w/57031 GASKET)	1	
5	29270	RING—Truarc	1	25	56788-A	ELEMENT—air filter	1	
6	57280	BODY—pump	1	26	56787	BRACKET—air filter	1	
7	56326	OIL LINE (tank to oil pump)	1	27	57031	GASKET—felt (cemented to each cover)	2	
8	56891	TRIGGER—throttle	1	28	A-57305	COVER—filter (back) (w/57031 GASKET)	1	
9	A-57277	SADDLE BRACKET AND STRAP (see note)	1	29	72971-1	GASKET—air filter	1	
10	80749	SCREW—fil. hd., 10-32 x 1 3/8"	1	30	A-56760	CARBURETOR ASSEMBLY (Tillotson HL-82A)	1	
11	56734	STUD—strap (plain)	1	31	77392	CARBURETOR REPAIR KIT (RK-420)	1	
12	56735	STUD—strap (threaded)	1	32	77342	CARBURETOR GASKET SET (GS-145)	1	
13	57283	SPRING—piston	1	33	81013	NUT—hex, 1/4-20	2	
14	74388	"O"—RING	1	34	83009	WASHER—lock 1/4"	2	
15	57281	PISTON—pump	1	35	55553	GASKET—carburetor	1	
16	57282	NUT—piston	1	36	80583	SCREW—pan hd., 10-32 x 3/4"	3	
17	57289	BUTTON—pump piston	1	37	A-55679-A2	REED VALVE ADAPTER	1	
18	A-57276	FUEL TANK	1	38		Includes		
19	56762	CAP	2	39	27464	STUD	2	
	56754	DECAL—"fuel mix"	1	40	55116	GASKET—reed valve adapter	1	
	56755	DECAL—"chain oil"	1	41	81065-2	NUT—hex, 1/4-28	2	
	56750	DECAL—"HOMELITE"	1		39	84004	WASHER—flat, 1/4"	2
	57326-A	DECAL—"500"	1		40	80577	SCREW—pan hd., 8-32 x 3/8"	2
20	56765	ADAPTER—screen	1		41	81151	NUT—mounting, 3/8-24	1

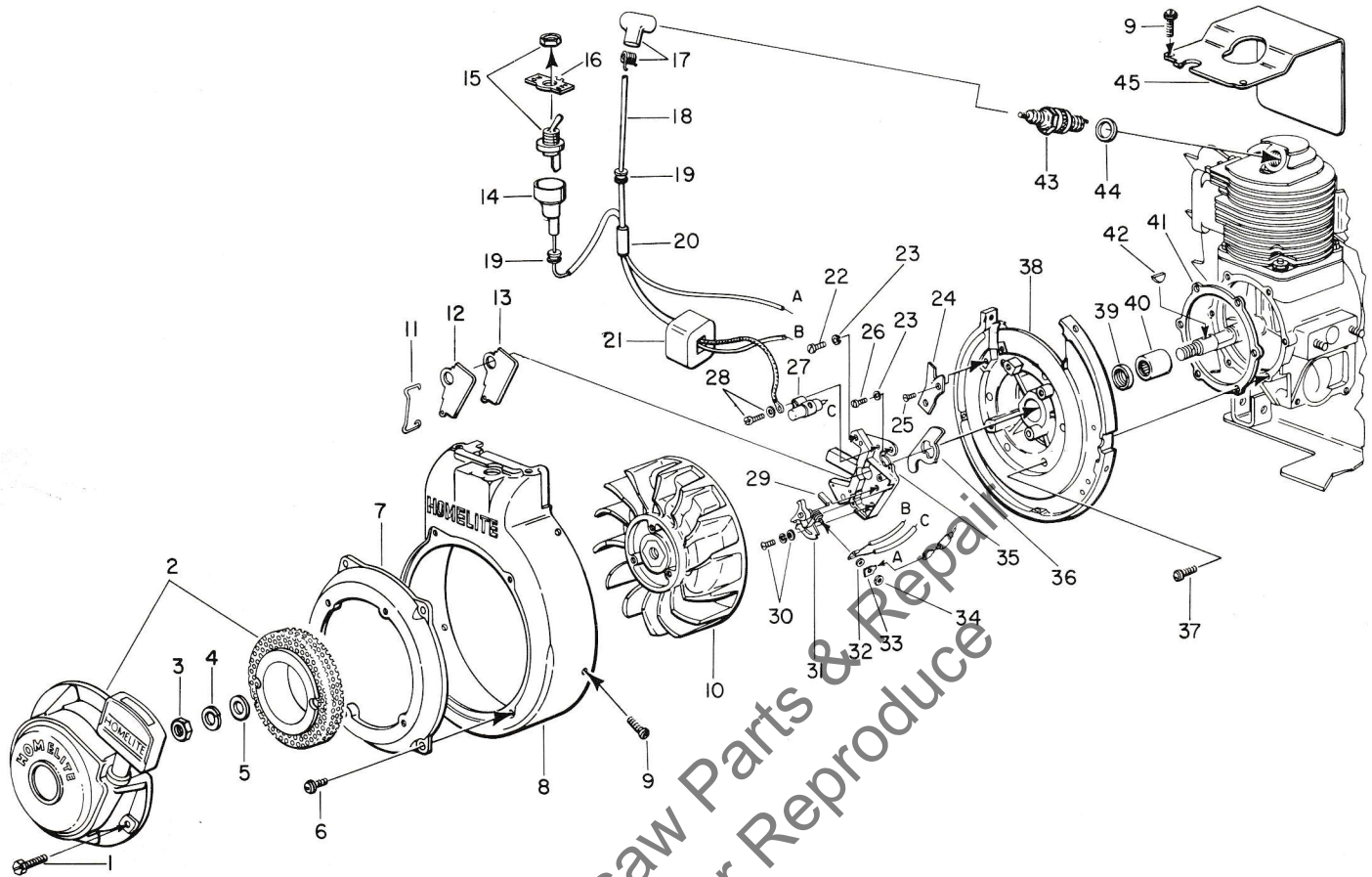
Note: Tank mounting straps, presently spot welded to saddle bracket, are replaceable separately. For upper (long) strap, order part 57143; for lower (short) strap, order part 57144. Fasten with rivets, part No. 85000.

Always give model and serial number of unit when ordering parts.  
1961 Models are identified by "A" preceding the serial number



# HOMELITE 500

# IGNITION SYSTEM

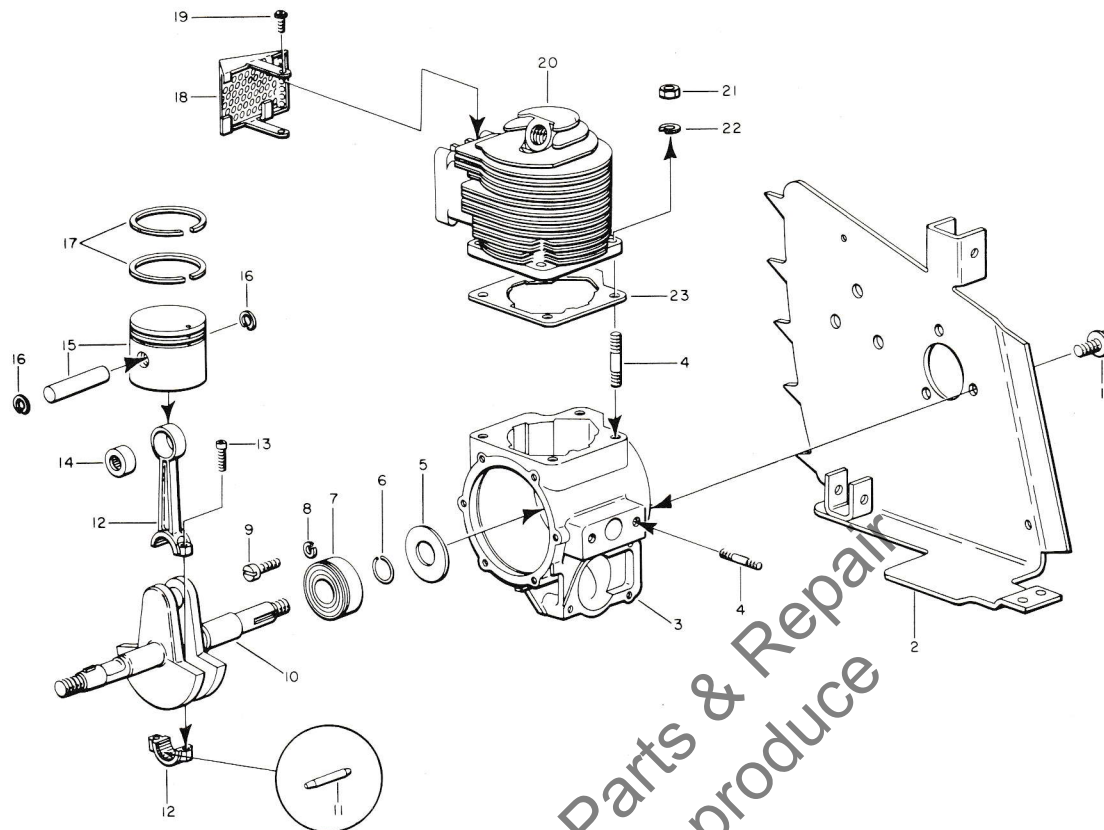


JULY 1961

Index No.	Part No.	Description	No. Required	Index No.	Part No.	Description	No. Required
1	80681	SCREW—hex. hd., 1/4-20 x 1/2"	4	23	83046	WASHER—lock, No. 10	3
2	A-56487-1	RECOIL STARTER ASSEMBLY with cup and screen	1	24	55595-1	CLAMP—high tension lead	1
	56752	DECAL—"HOMELITE"	1	25	80598	SCREW—flat hd., 6-32 x 3/16"	2
	57327-A	DECAL—"500"	1	26	80595	SCREW—fil. hd., 10-24 x 1/2"	1
3	81110	NUT—hex., 7/16-20	1	27	55987	CONDENSER (with terminal)	1
4	83019	WASHER—lock, 7/16"	1	28	57750	SCREW GROUP—condenser fastening	1
5	84055	WASHER—flat, 7/16"	1	29	55984	WICK—felt	1
6	80576	SCREW—pan hd., 10-32 x 3/16"	4	30	57749	SCREW GROUP—point fastening	1
7	56426	ADAPTER—starter	1	31	A-57745	POINTS (set)—with pivot post	1
8	A-55650-3	HOUSING—fan	1	32	55983	WASHER—terminal	1
9	80577	SCREW—pan hd., 8-32 x 3/8"	7	33	57733	TAB—ground terminal	1
10	57568	ROTOR—magneto	1	34	55982	NUT—terminal	1
11	55980	CLAMP—dust cover	1	35	57744	BOX—breaker w/ core	1
12	55979	COVER—dust	1	36	56292-A	WASHER—sealing mounting	1
13	55978-2	GASKET—dust cover	1	37	80576	SCREW—pan hd., 10-32 x 3/16"	6
14	A-57740	GROUND LEAD (to "on off" switch)	1	38	A-57809	BACK PLATE	1
15	A-57716	SWITCH—Toggle (mount on adapter) Includes	1	39	56134	SEAL—garlock	1
16	55879	PLATE—"on off"	1	40	57533	BEARING—needle	1
17	A-55373	TERMINAL—"Sparky" (cover and spring)	1	41	55049	GASKET—back plate	1
18	55235-A	LEAD—high tension	1	42	75078	KEY—rotor	1
19	60929	GROMMET	2	43	40190-S	SPARK PLUG—Champion J-6-J	1
20	56027	SLEEVE—insulating	1			Includes	
21	55986	COIL (with terminals)	1	44	25038	GASKET—spark plug	1
22	80660	SCREW—fil. hd., 10-24 x 7/8"	2	45	57105	SHIELD—cylinder	1

# HOMELITE 500

Always give model and serial number of unit when ordering parts.  
1961 Models are identified by "A" preceding the serial number



JULY 1961

Index No.	Part No.	Description	No. Required	Index No.	Part No.	Description	No. Required
1	80741	SCREW—hex hd., Spin-lock, $\frac{5}{16}$ 18 x $\frac{5}{8}$ "	3	12	AA-55195	CONNECTING ROD	1
2	A-57304	DRIVE PLATE ASSEMBLY	1			Includes	
	57278	STRIP—sealing	1	13	80805	SCREW—Allen cap. 8-32 x $\frac{3}{16}$ "	2
3	A-57081-1	CRANKCASE	1	14	55196	BEARING—piston pin	1
		Includes		15	AA-55279	PISTON AND PIN ASSEMBLY	1
4	55871	STUD—cylinder	4			Includes	
5	55048-A	GASKET—crankcase sealing	1	16	55095	RING—piston pin retaining	2
6	56109	RING—snap	1	17	55038	RING—piston	2
7	56097-S	BEARING—main	1	18	A-56613-A	EXHAUST FLANGE CAP	1
8	83061	WASHER—lock, $\frac{1}{4}$ "	2	19	80625	SCREW—pan hd., 10-32 x $\frac{1}{2}$ "	2
9	19238-A	SCREW—bearing retaining	2	20	56403	CYLINDER	1
10	57535	CRANKSHAFT	1	21	81065-2	NUT—hex, $\frac{1}{4}$ -28	4
11	AA-55280	ROLLER—set of 27 needles	1	22	83009	WASHER—lock, $\frac{1}{4}$ "	4
				23	56864	GASKET—cylinder	1

**\* SPECIAL TOOLS AND ACCESSORIES**

Part No.	Description	No. Required	Part No.	Description	No. Required
23528	WRENCH—socket screw (conn. rod)	1	23138-1	ADAPTER—bearing assembling	1
23234	ASSEMBLY TOOL—needle bearing	1	A-23137	JACKSCREW ASSEMBLY	1
22828	PLIERS—for Tru-arc ring (piston)	1	22812-1	PLATE—shaft aligning	1
22771	SPRAY CAN red paint	1	23233	PLUG—Garlock seal assembling	1
AA-22560	MAGNETO ROTOR REMOVER ASSEMBLY	1	23391-1	ASSEMBLY TOOL—needle bearing	1
A-23131	CLUTCH SPIDER PULLER ASSEMBLY	1	A-56558	NOISE SUPPRESSOR CAP ASSEMBLY	1
23136	BODY—assembling fixture	1	23488	LOCKTITE KIT	1

\*Supplied only when ordered

Always give model and serial number of unit when ordering parts.  
1961 Models are identified by "A" preceding the serial number

# HOMELITE

## Authorized Sales and Service Branches

Homelite sales and service factory branches are located throughout the country. Field representatives and factory-trained servicemen are always available, ready and able to keep your Homelites running in top performance at all times. See the "Yellow Pages", in the telephone directory, for the address and phone number of your nearest Homelite Branch office.

<b>California</b> Alhambra (Los Angeles area) Fresno Sacramento S. San Francisco	<b>Missouri</b> Kansas City St. Louis	<b>Texas</b> Dallas
<b>Colorado</b> Denver	<b>Nebraska</b> Omaha	<b>Utah</b> North Salt Lake
<b>Connecticut</b> Byram Hartford	<b>New Jersey</b> North Arlington Woodbridge	<b>Virginia</b> Alexandria
<b>Florida</b> Jacksonville Miami	<b>New York</b> Buffalo Latham (Albany area) Rochester Syracuse	<b>Washington</b> Seattle Spokane
<b>Georgia</b> Atlanta	<b>North Carolina</b> Charlotte Raleigh	<b>West Virginia</b> Charleston Clarksburg
<b>Illinois</b> Stone Park (Chicago area)	<b>Ohio</b> Cincinnati Cleveland Toledo	<b>Wisconsin</b> Milwaukee
<b>Indiana</b> Indianapolis	<b>Oklahoma</b> Oklahoma City	<b>CANADA</b> TERRY MACHINERY CO., LTD.
<b>Louisiana</b> Bossier City Metairie	<b>Oregon</b> Portland	<b>Quebec</b> St. Laurent (Montreal area) Quebec City
<b>Maine</b> Orono	<b>Pennsylvania</b> Altoona Erie Harrisburg Hazleton Malvern Philadelphia Pittsburgh	<b>Alberta</b> Edmonton
<b>Maryland</b> Baltimore	<b>Tennessee</b> Knoxville Memphis	<b>British Columbia</b> Vancouver Prince George
<b>Massachusetts</b> Allston (Boston area)		<b>Manitoba</b> Winnipeg
<b>Michigan</b> Detroit Grand Rapids		<b>New Brunswick</b> Moncton
<b>Minnesota</b> St. Paul		<b>Ontario</b> Ottawa Toronto

# HOMELITE

A **textron** DIVISION

PORT CHESTER, N. Y.