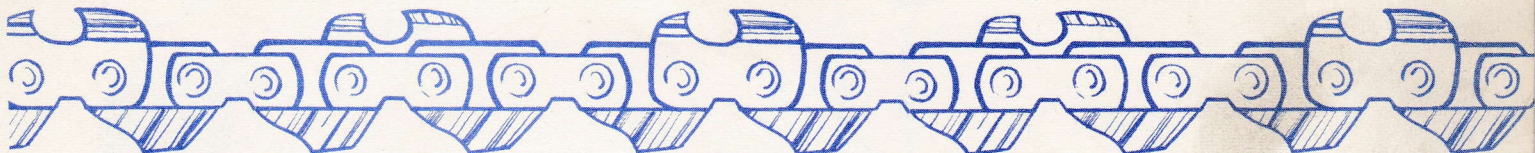


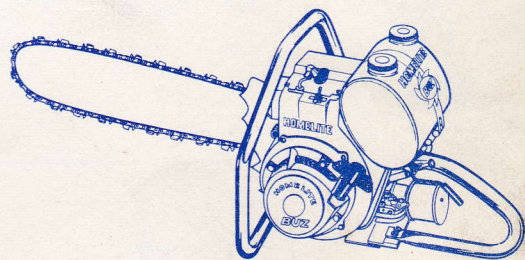
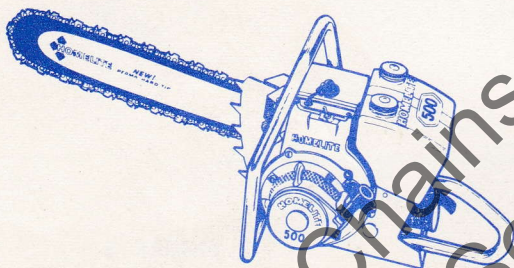
HOMELITE



CHAIN SAW PARTS LIST

500

BUZ



1960 500 Starting S/N1075665

1961 500 Starting S/N1202042

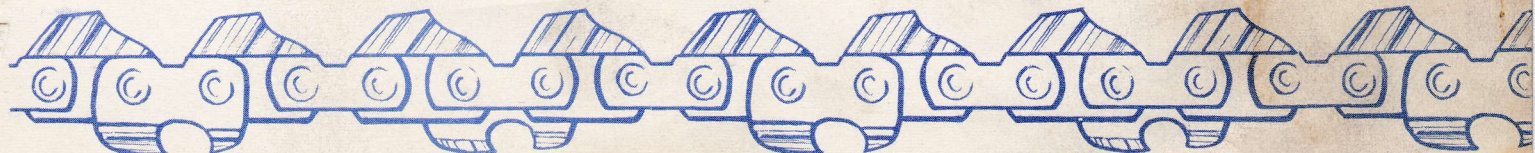
1959 BUZ Starting S/N954445

1960 BUZ Starting S/N1085946

1962 EBC Starting S/N1286896

1963 EBCA* Not Listed*

EBC AND EBCA ENGINE PARTS LIST ONLY



Leon's Chainsaw Parts & Repair
Do Not Sell or Reproduce

FIGURE 1

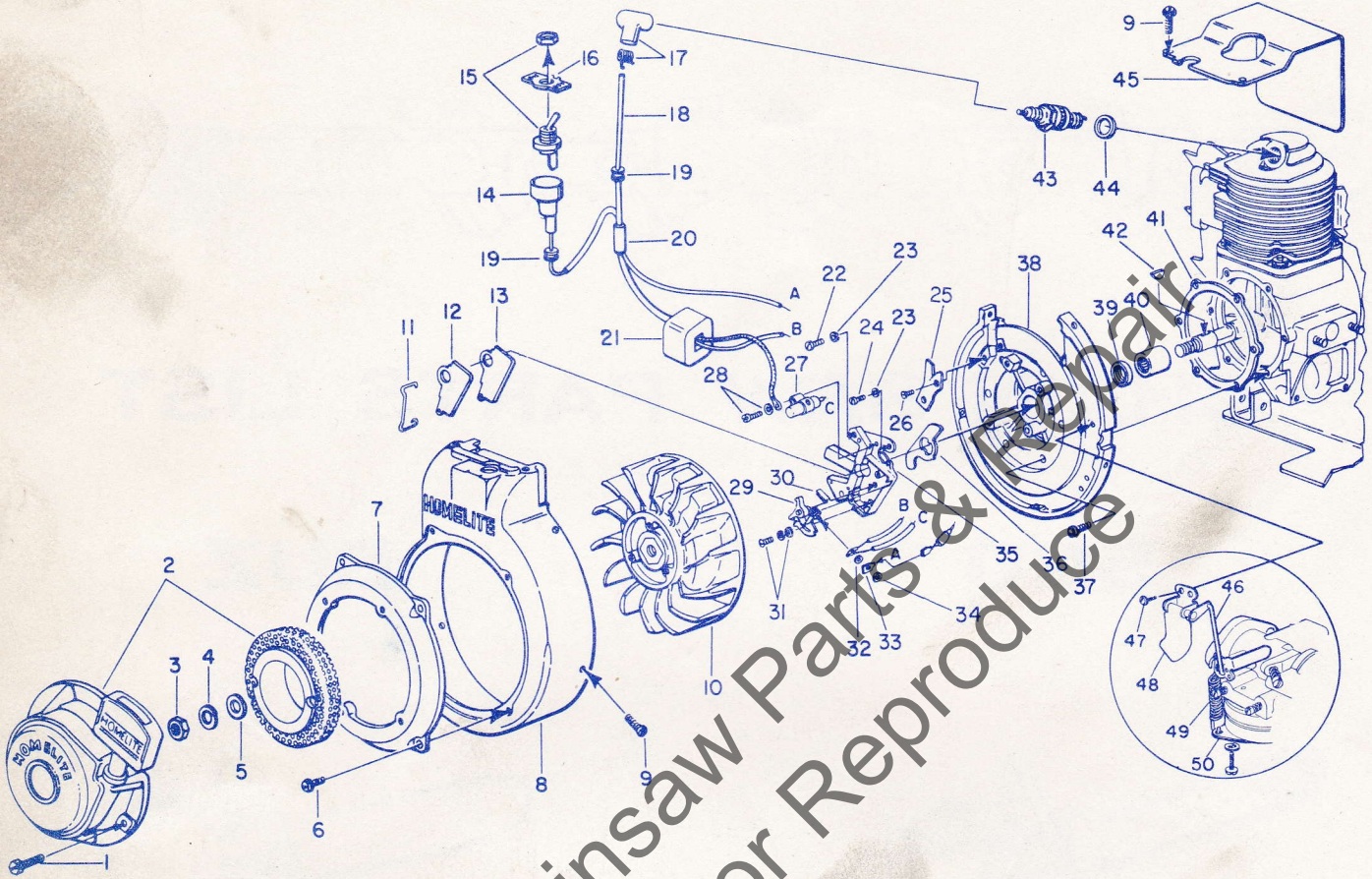
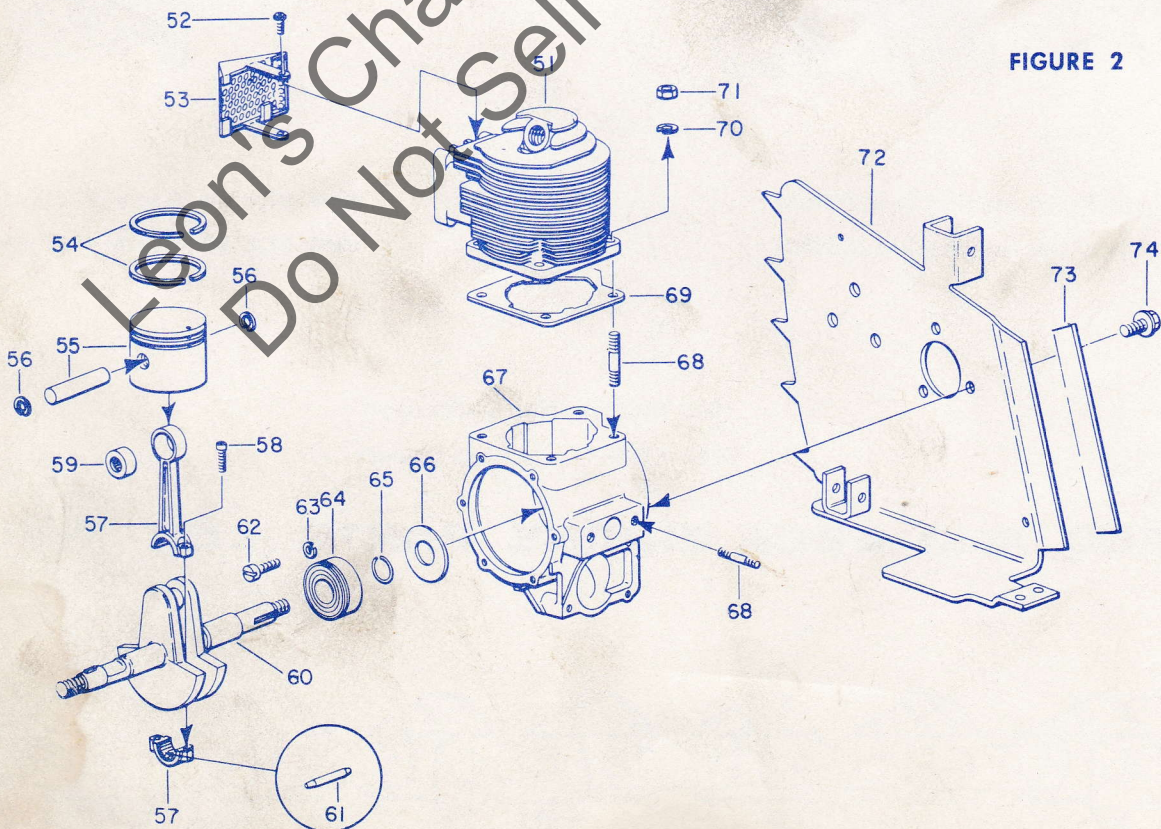


FIGURE 2



Circled asterisk * denotes a part that may require adaptation for use in older saws; see notes.

Black circled numerals ① refer to note numbers on page 6.

No.	Description	Part No.	BUZ					Qty.	No.	Description	Part No.	BUZ					Qty.
			1960	1961	1962	1963	EBCA					1960	1961	1962	1963	EBCA	
1	SCREW - hex hd., 1/4 - 20 x 1/2	80681	*	*	*	*	*	4	37	SCREW - pan hd., 10 - 32 x 9/16	80576	*	*	*	*	*	6
2	STARTER ASSEMBLY ①	A-56487-1	*	*	*	*	*	1	38	BACK PLATE ⑤	A-58166	*	*	*	*	*	1
3	NUT - hex, 7/16 - 20	81110	*	*	*	*	*	1		A-56080-A	*	*	*	*	*	1	
4	WASHER - lock, 7/16	83019	*	*	*	*	*	1	39	Includes: SEAL-garlock	56134	*	*	*	*	*	1
5	WASHER - flat, 7/16	84055	*	*	*	*	*	1		71597	*	*	*	*	*	1	
6	SCREW - pan hd., 10 - 32 x 9/16	80576	*	*	*	*	*	4	40	BEARING - needle	57533	*	*	*	*	*	1
7	ADAPTER - starter	56426	*	*	*	*	*	1		71597	*	*	*	*	*	1	
8	FAN HOUSING (air shroud) ②	A-55650-3	*	*	*	*	*	1	41	GASKET - back plate	55049	*	*	*	*	*	1
9	SCREW - pan hd., 8 - 32 x 3/8	80577	*	*	*	*	*	7	42	KEY - rotor	75078	*	*	*	*	*	1
10	ROTOR ③	57568-A	*	*	*	*	*	1	43	SPARK PLUG - Champion J6J ⑥	40190-5	*	*	*	*	*	1
		56026-A	*	*	*	*	*	1	44	Includes: GASKET	26038	*	*	*	*	*	1
11	CLAMP - dust cover	55980	*	*	*	*	*	1	45	SHIELD - cylinder	57105	*	*	*	*	*	1
12	COVER - dust	55979	*	*	*	*	*	1		56703	*	*	*	*	*	1	
13	GASKET - dust cover	55978-2	*	*	*	*	*	1		A-58056-1	*	*	*	*	*	1	
		55978	*	*	*	*	*	1	46	ROD - governor	55642	*	*	*	*	*	1
14	LEAD - ground	A-57740	*	*	*	*	*	1	47	SCREW - pan hd., 6 - 32 x 9/16	80605	*	*	*	*	*	2
		56028	*	*	*	*	*	1	48	GOVERNOR	A-55640-1	*	*	*	*	*	1
15	SWITCH - toggle w/#17 without #17	A-57716	*	*	*	*	*	1	49	SPRING - governor	55058	*	*	*	*	*	1
		A-57650-2	*	*	*	*	*	1	50	BRACKET - governor spring (mount on carburetor)	57935-A	*	*	*	*	*	1
16	PLATE - "on-off"	55879	*	*	*	*	*	1	51	CYLINDER	56403	*	*	*	*	*	1
17	TERMINAL - "Sparky"	A-55373	*	*	*	*	*	1	52	SCREW - pan hd., 10 - 32 x 1/2	80625	*	*	*	*	*	2
18	LEAD - high tension, 8" long 7 3/16" long	55235-A	*	*	*	*	*	1	53	CAP - exhaust	A-56613-A	*	*	*	*	*	1
		56029	*	*	*	*	*	1		SUPPRESSOR - exhaust ⑦	A-56558	*	*	*	*	*	1
19	GROMMET	60929	*	*	*	*	*	2	54	RING - piston	55038	*	*	*	*	*	2
20	SLEEVE - insulating	56027	*	*	*	*	*	1	55	PISTON & PIN ⑧	AA-55279	*	*	*	*	*	1
21	COIL ③	55986-A	*	*	*	*	*	1	56	Includes: RING - retaining	55095	*	*	*	*	*	2
22	SCREW - fil. hd., 10 - 24 x 7/8	80660	*	*	*	*	*	2	57	CONNECTING ROD	AA-55195-A	*	*	*	*	*	1
23	WASHER - lock, #10	83046	*	*	*	*	*	3	58	Includes: SCREW - 8 - 32 x 9/16	80805	*	*	*	*	*	2
24	SCREW - fil. hd., 10 - 24 x 1/2	80595	*	*	*	*	*	1	59	BEARING - pin	55196	*	*	*	*	*	1
25	CLAMP - lead	55595-1	*	*	*	*	*	1	60	CRANKSHAFT	57535	*	*	*	*	*	1
26	SCREW - flat hd., 6 - 32 x 5/16	80598	*	*	*	*	*	2		56702-A	*	*	*	*	*	1	
27	CONDENSER w/terminal	55987	*	*	*	*	*	1		58153	*	*	*	*	*	1	
28	SCREW GROUP - condenser	57750	*	*	*	*	*	1		58596	*	*	*	*	*	1	
	SCREW - condenser	55988	*	*	*	*	*	1	61	ROLLERS - set of 27 needles	AA-55280	*	*	*	*	*	1
	Use: WASHER - lock, #8	83060	*	*	*	*	*	1	62	SCREW - bearing retainer	19238-A	*	*	*	*	*	2
	WASHER - flat, #8	84048	*	*	*	*	*	1	63	WASHER - lock, 1/4" (thin)	83061	*	*	*	*	*	2
29	POINTS - breaker (set) ④	A-58165	*	*	*	*	*	1	64	BEARING - main	56097-S	*	*	*	*	*	1
	Includes:	A-55971	*	*	*	*	*	1	65	RING - retaining	56109	*	*	*	*	*	1
30	WICK - felt	55984	*	*	*	*	*	1	66	GASKET - sealing	55048-A	*	*	*	*	*	1
31	SCREW GROUP - point	57749	*	*	*	*	*	1	67	CRANKCASE ⑨	A-57081-1	*	*	*	*	*	1
	SCREW - point	55985	*	*	*	*	*	1	68	Includes: STUD	55871	*	*	*	*	*	6
	Use: WASHER - lock, #8	83060	*	*	*	*	*	1	69	GASKET - cylinder	56864	*	*	*	*	*	1
	WASHER - flat, #8	84048	*	*	*	*	*	1	70	WASHER - lock,	83009	*	*	*	*	*	4
32	WASHER - terminal	55983	*	*	*	*	*	1	71	NUT - hex, 1/4 - 28	81065-2	*	*	*	*	*	4
33	TAB - ground lead	57733	*	*	*	*	*	1	72	DRIVE PLATE w/#73	A-57304	*	*	*	*	*	1
34	NUT - terminal	55982	*	*	*	*	*	1		w/out #73	A-56706	*	*	*	*	*	1
35	BOX - breaker w/core	57744	*	*	*	*	*	1		" ADAPTER	A-57865	*	*	*	*	*	1
		55969	*	*	*	*	*	1	73	STRIP - sealing	57278	*	*	*	*	*	1
36	WASHER - sealing (felt)	56292-A	*	*	*	*	*	1	74	SCREW - hex hd., 5/16 - 18 x 5/8	80741	*	*	*	*	*	3
		55989	*	*	*	*	*	1		" - button hd., 5/16 - 18 x 5/8	80750	*	*	*	*	*	3

TOOLS

COMBINATION WRENCH	22808	*	*	*	*	*	*
PLIERS - snap ring, #1	22828	*	*	*	*	*	*
REMOVER - magneto rotor	AA-22560	*	*	*	*	*	*
PLATE - crankshaft aligning	22812-1	*	*	*	*	*	*
PULLER - clutch spider	A-23131	*	*	*	*	*	*
BODY - assembling fixture	23136	*	*	*	*	*	*
JACKSCREW - crankshaft	A-23137	*	*	*	*	*	*
ADAPTER - main bearing	23138-1	*	*	*	*	*	*
PLUG - seal assembling	23233	*	*	*	*	*	*
TOOL - needle bearing (piston pin)	23234	*	*	*	*	*	*
TOOL - bearing assembly	23391-1	*	*	*	*	*	*
TOOL - sprocket bearing	23420	*	*	*	*	*	*

DECALS → See Note Below

"HOMELITE" - on fuel tank	56750	*	*				
"BUZ" - on fuel tank (red)	56751 ▼			*			
"BUZ" - on fuel tank (black)	56751-A			*			
"HOMELITE" - on starter	56752	*	*	*	*		
"BUZ" - on starter	56753 ▼			*			
"FUEL MIX"	56754	*	*	*	*		
"CHAIN OIL"	56755	*	*	*	*		
"STARTING INSTRUCTIONS"	56766-A	*	*	*	*		
"500" - on tank	57326-A	*	*				
"500" - on starter	57327 ▼	*	*				

NOTE - Decals with this mark ("▼") will not be available after present stock is exhausted.



Circled asterisk * denotes a part that may require adaptation for use in older saws; see notes.

Black circled numerals ① refer to note numbers on page 6.

No.	Description	Part No.	1960	1959	1958	1957	1956	Qty.	No.	Description	Part No.	1960	1959	1958	1957	1956	Qty.
1	SADDLE - tank w/straps w/out straps	A-57277 A-56728	*	*				1	42	GASKET - air filter	72971-1	*	*	*	*	*	1
2	STRAP - fuel tank long short	56733 57143 57144			*	*	*	1	43	CARBURETOR (Til. #HL82A)	A-56760	*	*	*	*	*	1
3	SCREW - fil. hd., 10-32 x 1 1/4 10-32 x 1 3/8	80249 80749	*	*				1	44	GASKET - carburetor	55553	*	*	*	*	*	1
4	STUD - strap (plain)	56734	*	*	*	*	*	1	45	ADAPTER - reed valve	A-55679-A2	*	*	*	*	*	1
5	STUD - strap (threaded)	56735	*	*	*	*	*	1	46	Includes: STUD	27464	*	*	*	*	*	2
6	SCREW - pan hd., 8-32 x 3/8	80577	*	*				2	47	GASKET - reed valve adapter	55116	*	*	*	*	*	1
7	RING - retaining PIN - cotter	29270 86301	*	*				1	48	SCREW - pan hd., 10-32 x 3/4	80583	*	*	*	*	*	3
8	FULCRUM PIN	57139-A 57139	*	*				1	49	NUT - hex, 1/4 - 20	81013	*	*	*	*	*	5
9	TRIGGER - throttle	56891 56736	*	*				1	50	FUEL LINE - tank to carburetor	76178	*	*	*	*	*	1
10	SLEEVE - trigger	56737			*	*		1	51	SCREW - hex hd., 1/4 - 20 x 1 3/8	80447	*	*	*	*		2
11	BRACKET - oil pump & trigger	56742-A			*	*		1	52	NUT - hex, 1/4 - 20	81053	*	*	*	*	*	2
12	BRACKET - angle	56738			*	*	*	1	53	HANDLE BAR	A-56723 A-56749	*	*			*	1
13	WASHER - flat, 1/4	84004	*	*	*	*	*	2	54	NUT - lock, 3/8 - 16	81137	*	*	*	*	*	2
14	NUT - hex, 1/4 - 28	81065-2	*	*	*	*	*	2	55	ADAPTER - straight	31733-1	*	*	*	*	*	1
15	SCREW - hex hd., 1/4 - 20 x 5/8	80581			*			2	56	PAD - guide bar	56701-A 56701	*	*	*	*	*	1
16	WASHER - lock, 1/4	83009	*	*	*	*	*	7	57	STUD - guide bar	55606	*	*	*	*	*	2
17	SCREW - hex hd., 1/4 - 20 x 3/4	80218			*	*		1	58	PLATE - guide bar (inner)	56871-A 55606	*	*	*	*	*	1
18	OIL LINE - oil pump to chain	A-57145 A-56746	*	*	*	*	*	1	59	PLATE - guide bar (outer)	56872-B 55667	*	*	*	*	*	1
19	FUEL TANK - w/oil reservoir w/out oil reservoir	A-57276 A-56773 A-58061	*	*				1	60	ADJUSTING PLATE - bar	A-55591-2	*	*	*	*	*	1
20	Includes: CAP	56762	*	*	*	*	*	2	61	Includes: SCREW - 3/16 - 18 x 2	80617	*	*	*	*	*	1
21	FITTING - oil	56765	*	*	*	*	*	1	62	PIN	55552	*	*	*	*	*	1
22	OIL LINE - tank to oil pump	56326 56745	*	*	*	*	*	1	63	NUT - 3/4 - 18	81123	*	*	*	*	*	1
23	FITTING - fuel, straight elbow	57138 56778	*	*	*	*	*	1	64	WASHER - lock	83018	*	*	*	*	*	2
24	BUTTON - late early (w/connector)	57289-1 71764	*	*	*	*	*	1	65	NUT - hex, 1/2 - 16	81089-2	*	*	*	*	*	2
25	NUT - mounting, 3/8 - 24	81151	*	*	*	*	*	1	66	NUT - hex, 3/8 - 24	81192 81116	*	*	*	*	*	1
26	CONNECTOR - hex nut	57282	*	*	*	*	*	1	67	WASHER - clutch retaining	55036	*	*	*	*	*	1
27	PISTON - late early, w/"O" ring #27	57281 A-74404	*	*	*	*	*	1	68	COVER - clutch	56238-A 56238	*	*	*	*	*	1
28	"O" RING	74388	*	*	*	*	*	1	69	SPRING - clutch	55123-C 55123-A	*	*	*	*	*	2
29	SPRING - piston, late early	57283 71762	*	*	*	*	*	1	70	KEY	55225-1A	*	*	*	*	*	2
30	BODY - pump, late early	57280 71761	*	*	*	*	*	1	71	SPIGOT - clutch	55075-3A 55073-3	*	*	*	*	*	1
31	SCREW - plug	71759	*	*				1	72	SHOE - clutch	55076-1A	*	*	*	*	*	3
32	INLET TUBE	56741	*	*				1	73	WASHER - thrust (outer)	56132	*	*	*	*	*	1
33	SPRING - check valve	71760	*	*				2	74	RACE - inner	56231	*	*	*	*	*	1
34	BALL - check	25527-1	*	*				2	75	SPROCKET & DRUM 7 tooth, 7/16" pitch A - open end B - rim type	A-56299 A-57364-A	*	*	*	*	*	1
35	OIL PUMP KIT - w/balls, springs, spacer	A-57615	*	*	*	*	*	1	76	Includes: BEARING - needle A B	56230 77442	*	*	*	*	*	1
36	ELBOW FITTING - late early	57288 56707	*	*	*	*	*	1	77	WASHER - thrust (inner)	56236	*	*	*	*	*	1
37	SCREW - pan hd., 10-32 x 3/8	80579	*	*	*	*	*	4	78	GUARD - chain	57122-A 56748	*	*		*	*	1
38	COVER - filter (front) w/#57031 gasket	A-57306	*	*	*	*	*	1	79	SCREW - hex hd., 12-24 x 3/8	80837	*	*		*	*	2
39	ELEMENT - filter	56788-A	*	*	*	*	*	1	80	WASHER - flat,	84006	*	*		*	*	2
40	BRACKET - filter	56787	*	*	*	*	*	1	81	SCREW - pan hd., 10-32 x 1/2	80625	*	*		*	*	2
41	COVER - filter (rear) w/#57031 gasket	A-57305	*	*	*	*	*	1	82	GUARD - rear	57121	*	*		*	*	1
42	GASKET - cover (cemented)	57031	*	*	*	*	*	2	83	SCREW - hex hd., 1/4 - 20 x 5/8	80049	*	*		*	*	3
									84	PLUG - button	29187	*	*		*	*	1
									85	HANDLE - throttle grip	57124	*	*		*	*	1

PAINT

RED - spray can

BLUE - spray can

22771

23318

*

*

*

*

*

*

*

*

*

*

*

*

*

*

BUZ
SERIES

HOMELITE CHAIN SAW

500
SERIES

FIGURE 3

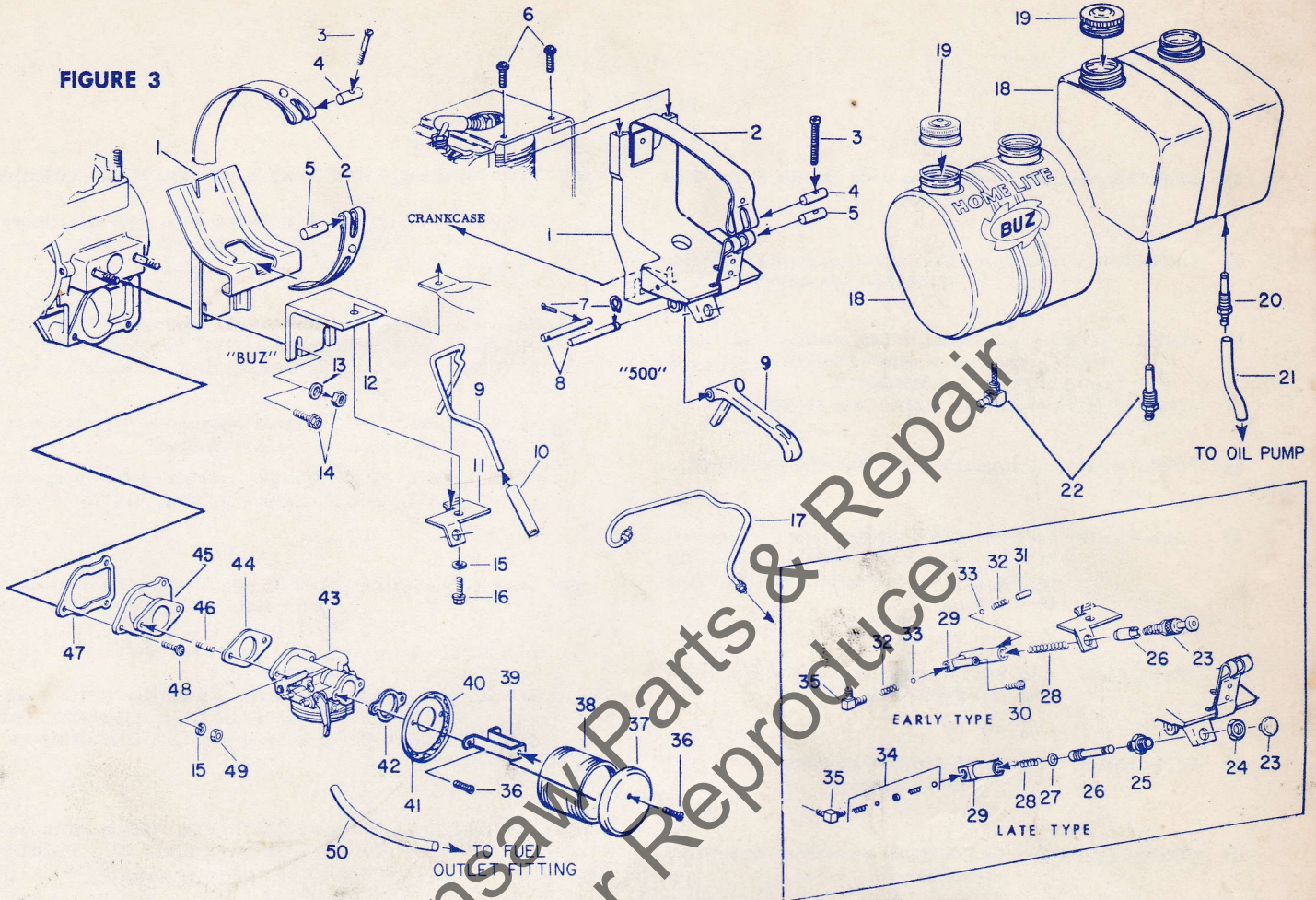
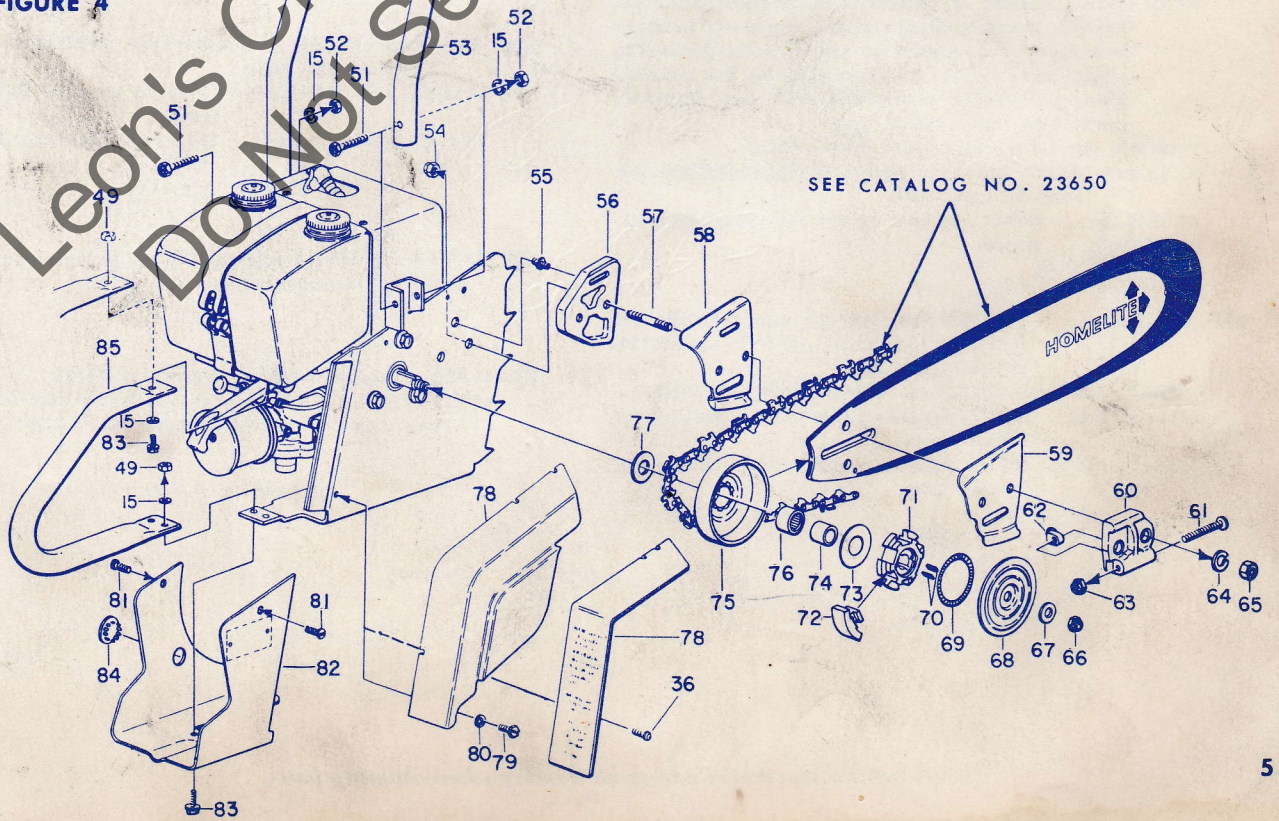


FIGURE 4



NOTES

- 1 STARTER ASSEMBLY - Refer to F-M Starter Parts Sheet #23649-A.
- 2 FAN HOUSING (air shroud) - #A-55650-3 supersedes #A-55650, #A-55650-1, #A-55650-2.
- 3 ROTOR - #57568-A supersedes #57568; #56026-A supersedes #56026. New rotors (with "-A" suffix) require new coil #55986-A. See SM#433-CS.
COIL - #55986-A supersedes #55986. See SM#433-CS.
- 4 POINTS - #A-58165 supersedes #A-57745. See SM#392-CS.
- 5 BACK PLATE - #A-58166, with 2 tapped holes for governor mounting, replaces #A-57809 back plate; this one back plate now services either saws or brushcutters.
- 6 SPARK PLUG - Cold weather operation may require hotter plug; see SM#355-CS.
- 7 SUPPRESSOR, exhaust - #A-56558 is also available as a chain saw accessory.
- 8 CONNECTING ROD - #A-A-55195-A supersedes #A-A-55195; see SM#414-CS.
- 9 CRANKCASE - #A-57081-1 (with 6 studs #55871) supersedes #A-57081 and #A-56714 crankcases; see STUD #55871 below.
STUD - #55871, quantity of 6 in Service Replacement crankcase (above); 4 used to attach cylinder, 2 are used to attach tank saddle (on 500 models) and may also be used to attach angle bracket of tank saddle (on Buz models). Also see WASHER, flat - #84004, NUT, hex - #81065-2, and SCREW, hex - #80581 below.
WASHER, flat - #84004 used with #81065-2 nut.
NUT, hex - #81065-2 used with #84004 flatwasher on 2 mounting studs for tank saddle.
SCREW, hex - #80581 replaced by nut and flatwasher, see (above).
- 10 SADDLE, tank - #A-57277 supplied with spot welded straps. Straps can be replaced with #57143 and #57144 straps below.
STRAP, fuel tank - #56733 supersedes original #A-56732.
STRAP, long - #57143 replaces welded strap, fasten with #85000 rivets.
STRAP, short - #57144 replaces welded strap, fasten with #85000 rivets.
- 11 RING - retaining - #29270 must be used with #57139-A fulcrum pin.
FULCRUM PIN - #57139-A (retained with ring) supersedes #57139 (retained with cotter pins).
- 12 CAP, fuel tank - #56762, quantity of one used on #A-58061 tank.
OIL LINE - #56326 supersedes #57292; see SM#345-CS.
BUTTON - #57289-1 supersedes #57289; used with late type oil pump.
NOTE: - LATE TYPE OIL PUMP replaces early type oil pump if all parts (as shown) are changed.
OIL PUMP KIT - #A-57615 includes springs, balls, and spacer used in late type oil pump; see SM#340-CS.
- 13 COVER, filter (rear) - #A-57306 with #57031 gasket supersedes #56785 cover and #56793 gasket; see SM#331-CS.
ELEMENT - filter - #56788-A supersedes #56788; see SM#331-CS.
COVER, filter (front) - #A-57305 supersedes #56786 cover and #56793 gasket; see SM#331-CS.
GASKET, cover - #57031 supersedes #56793; see SM#331-CS.
- 14 CARBURETOR - #A-56760 (Til. HL82A) refer to Parts List #23537, also see SM#411-CS. #A-56761 (Brown 9 CP) no longer available.
- 15 NUT, hex - #81053 supersedes original #81013 (thinner).
- 16 PAD, guide bar - #56701-A permits use of #56871-A inner guide bar plate.
PLATE, inner guide bar - #56871-A requires #56701-A pad (above).
PLATE, outer guide bar - #56872-B used with inner plate #56871-A.
- 17 NUT, hex - #81192 replacement nut permits use of #22808 combination wrench.
- 18 COVER, clutch - #56238-A supersedes #56238.
SPRING - clutch - #55123-C supersedes #55123 "-B", "-A".
SPIDER - clutch - #55075-3A supersedes #55075-3.

(continued on Page 7)



NOTES

- 19 SPROCKET & DRUM ASSEMBLY (with needle bearing) - Only original equipment is noted in model columns.

PLEASE NOTE: - Model 500, with "A" preceding serial number, was supplied with #A-57364-A Sprocket & Drum.

Model 500, with "B" preceding serial number, was supplied with #A-57341 Sprocket & Drum. Optional assemblies are also listed.

ALWAYS CHECK TYPE AND NUMBER OF TEETH BEFORE ORDERING.

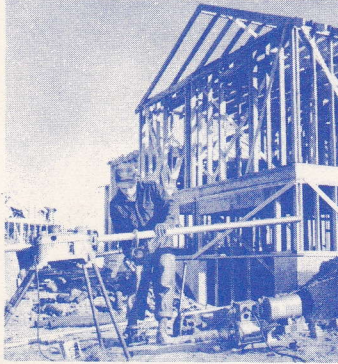
Bearing, needle - #56230 fits sprocket & drum with matching ; #77442 fits Sprocket & Drum with matching .

Leon's Chainsaw Parts & Repair
Do Not Sell or Reproduce

**You'll
SPEED WORK
and make
MORE MONEY
with...**



HOMELITE
SELF-PRIMING PUMPS



HOMELITE
DEPENDABLE GENERATORS



HOMELITE
POWERFUL ONE-MAN CHAIN SAWS



HOMELITE
ONE-MAN CONCRETE VIBRATORS



HOMELITE — BOSCH (Germany)
ELECTRIC BUILDER'S HAMMERS

HOMELITE

A **textron** DIVISION

PORT CHESTER, N. Y., U. S. A.