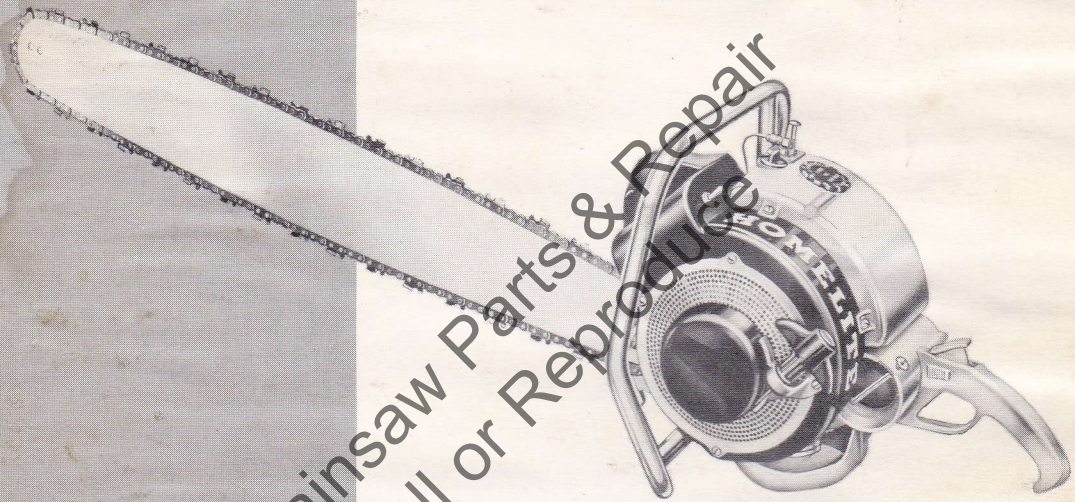


HOMELITE

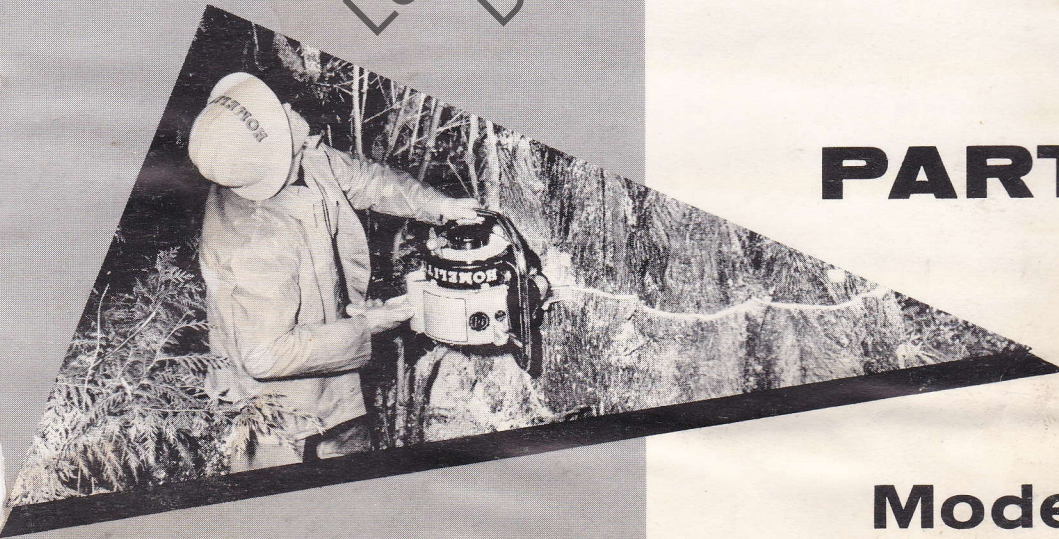
Chain Saw



Leon's Chainsaw Parts & Repair
Do Not Sell or Reproduce

PARTS LIST

Model 5-30N



HOMELITE CHAIN SAW MODEL 5-30N

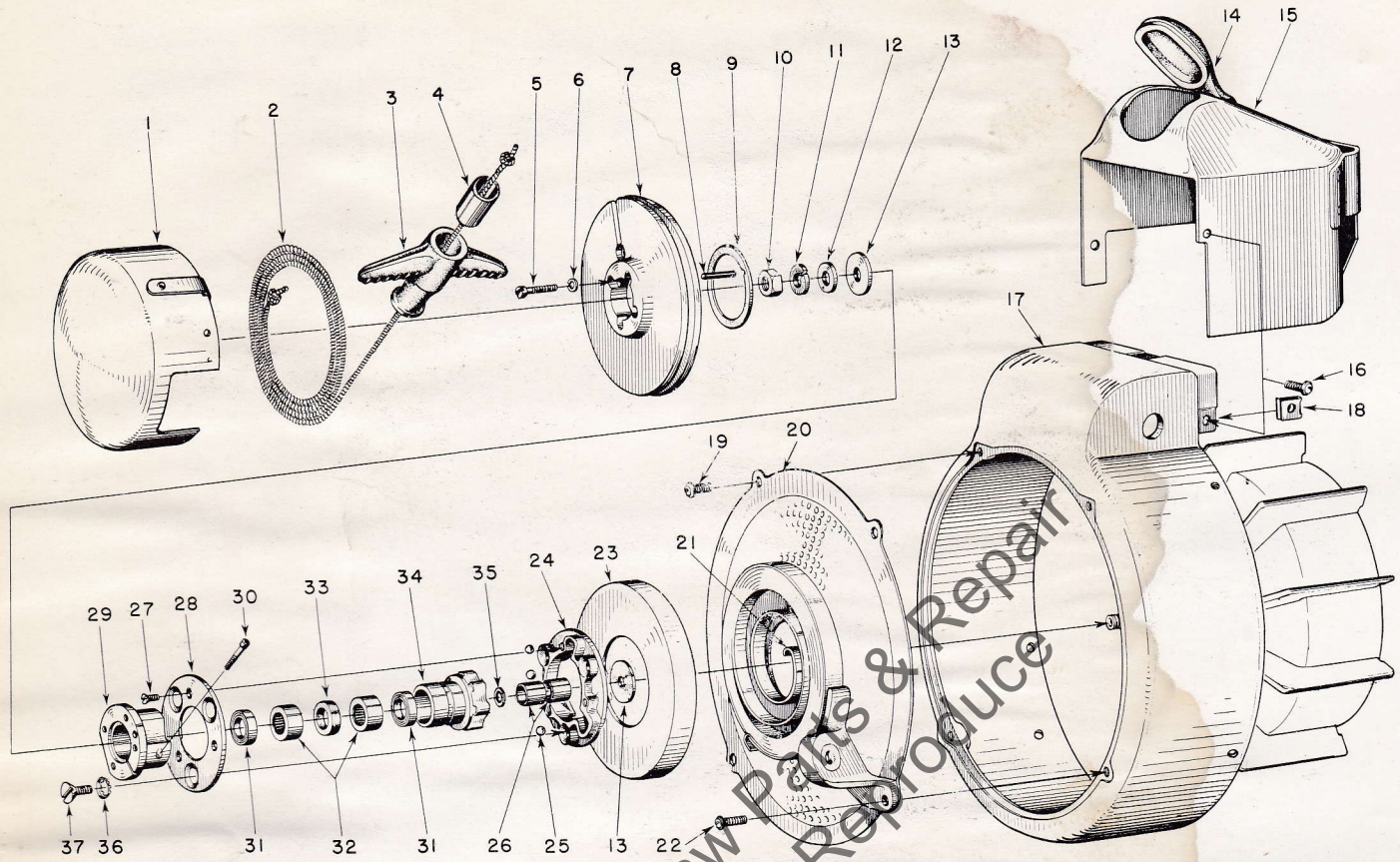


FIGURE 1—RECOIL STARTER PARTS

Index No.	Part No.	Nomenclature	No. Required	Index No.	Part No.	Nomenclature	No. Required
1	AA-73234	COVER—starting pulley	1	22	80572	SCREW—10-32 x 5/8 pan hd.	
	74846	DECAL				(through bracket)	1
2	55898	ROPE—starting	1	23	71603	COVER—spring housing	1
3	71149-B	GRIP—starting cable	1		AA-72308-1	BALL DRIVE	1
4	55369-A	PIN—starting grip lock	1			Includes	
5	80475	SCREW—6-32 x 3/4 fil. hd.	4	24	71563-C	PLATE—ball drive	1
6	83004	WASHER—#6 lock	4	25	30355-1	BALL—steel	3
7	A-55658	PULLY—starting (includes pin, index No. 8)	1	26	74221	RACE—inner	2
8	71577	PIN—dowel	1	27	80464	SCREW—5-40 x 5/16 flat hd.	3
9	71588	SHIM—plastic	as req.		AA-72307-1	RATCHET and HUB	1
10	81110	NUT—7/16-20 hex. jam	1			Includes	
11	83019	WASHER—7/16 lock	1	28	71570-B	RETAINER—ball	1
12	84055	WASHER—7/16 flat alum.	1	29	AA-72586	HUB—ratchet	1
13	71598-A	WASHER—thrust	2			Includes	
14	72138	CAP—spark plug	1	30	72295-A	SCREW—Allen	1
15	AA-73403	SHIELD—cylinder	1		AA-72306-1	RATCHET and BEARING	1
16	80577	SCREW—8-32 x 3/8 pan hd.	2			Includes	
17	AA-72393	SHROUD—air	1	31	71597	SEAL—garlock	2
		Includes		32	71596	BEARING—needle	2
18	81031	NUT—speed	2	33	71595	WICK—felt	1
	74770	GROMMET (not shown)	1	34	AA-73549	RATCHET	1
	71596-A	DECAL (Homelite)	1			Includes	
19	80578	SCREW—10-32 x 7/16 pan hd.	3	35	73525	WASHER—formica	1
20	A-74362	SCREEN—air	1	36	83074	WASHER—1/4 lock, countersunk	3
21	71470-A	SPRING—recoil	1	37	80173	SCREW—1/4-20 x 3/8 flat hd.	3

Always furnish saw model and serial number when ordering parts.

HOMELITE CHAIN SAW MODEL 5-30N

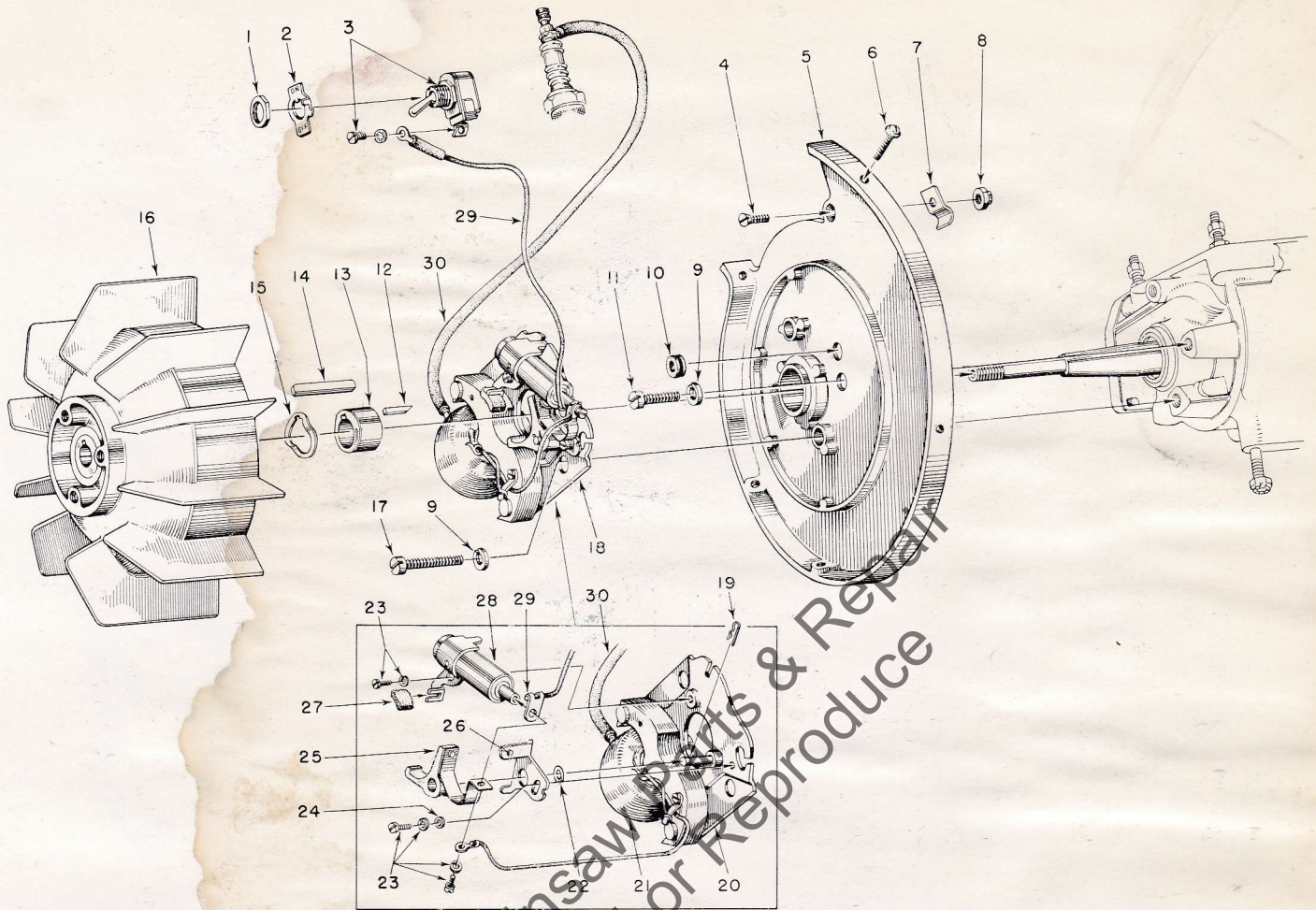


FIGURE 2—IGNITION SYSTEM PARTS

Index No.	Part No.	Nomenclature	No. Required
	AA-72094-A	SWITCH—"on-off"	1
		Composed of	
1	72084-A1	NUT	1
2	55879	PLATE—"on-off"	1
3	*	SWITCH (with ground screw)	1
4	80031	SCREW—10-32 x 1/2 flat head	1
5	71989-A	PLATE—back	1
6	80578	SCREW—10-32 x 7/16 pan head	3
7	72133	CLAMP	1
8	81109	NUT—10-32 flex. lock	1
9	83009	WASHER—1/4 lock	3
10	71488	GROMMET	1
11	80055	SCREW—1/4-20 x 3/4 fil. hd.	1
12	71349	KEY—cam	1
13	72126	CAM	1
14	19797	KEY—rotor	1
15	60407	WASHER—spring	1

Index No.	Part No.	Nomenclature	No. Required
16	72129	ROTOR	1
17	80161	SCREW—1/4-20 x 1 1/8 fil. hd.	2
18	AA-72394	STATOR—magneto (see inset)	1
		Composed of	
19	28008	LOCK—spring	1
20	72395	GROUP—stator	1
21	72397	COIL—magneto	1
22	30268	WASHER—breaker arm	as req.
23	72486	SCREW—(w/washer)	3
24	72484	WASHER—contact plate	1
25	72398	POINTS (set)	1
		Includes	
26	*	PLATE—contact	1
27	30267	WICK—felt	1
28	72396	CONDENSOR	1
29	AA-72399	LEAD—ground	1
30	AA-72400	LEAD—high tension	1

* Not sold separately

Always furnish saw model and serial number when ordering parts.

HOMELITE CHAIN SAW MODEL 5-30N

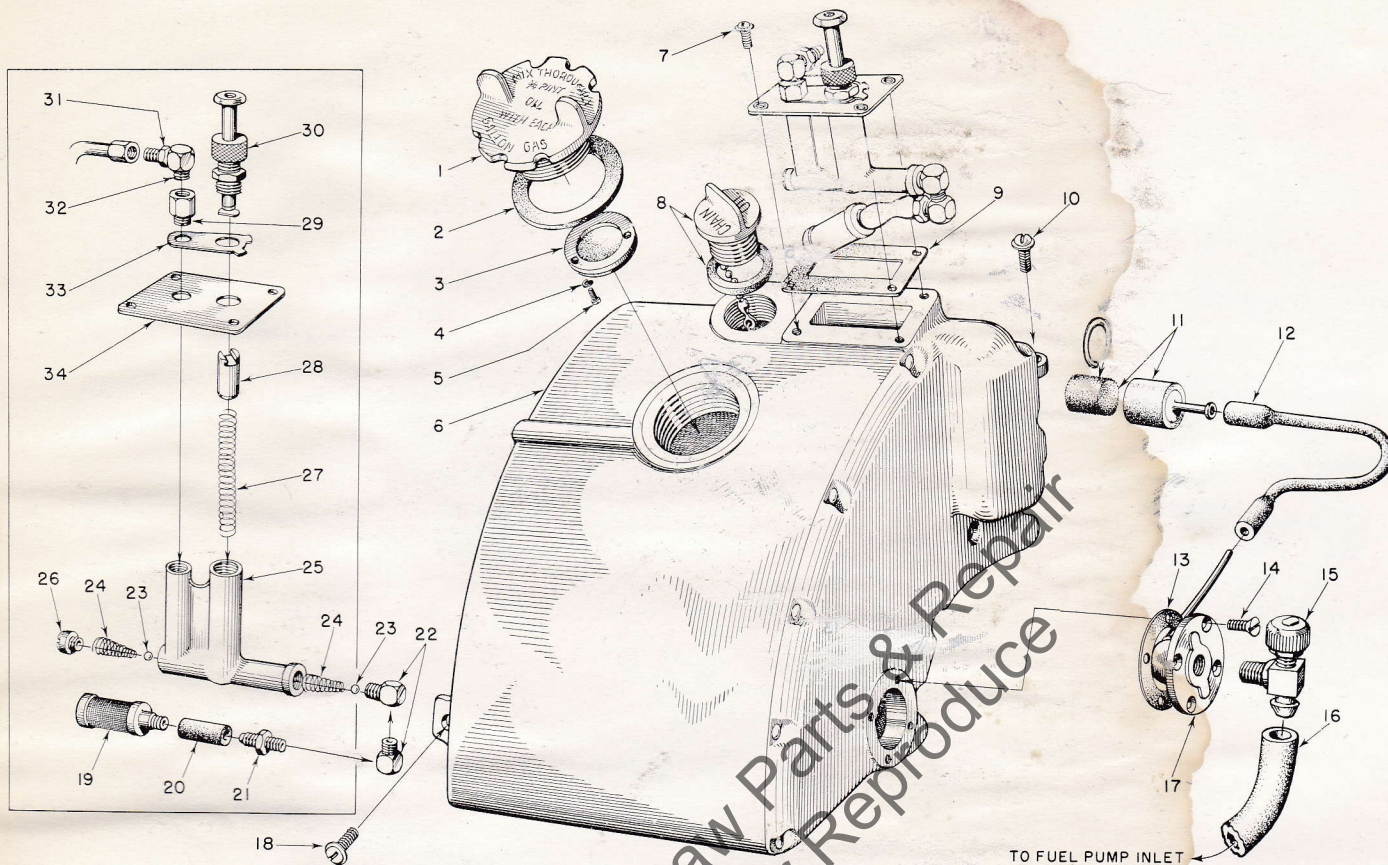


FIGURE 3 FUEL TANK PARTS

Index No.	Part No.	Nomenclature	No. Required
1	A-55305	FUEL CAP	1
		Composed of	
2	72173	GASKET—fuel cap	1
3	A-55301-A	VALVE—relief	1
4	83083	WASHER—#3 lock	3
5	80592	SCREW—3-48 x 1/4	3
6	AA-72168-3	FUEL TANK	1
		Includes	
	73280	DECAL (starting instructions)	1
7	80571	SCREW—6-32 x 3/8 pan hd.	4
8	AA-71655-1	OIL CAP	1
		Includes	
	72280	GASKET	1
	71551	GASKET—lubricator cover	1
	80583	SCREW—10-32 x 3/4 pan hd.	1
	A-74375	STRAINER—outlet	1
		Includes	
	74374	FILTER—felt	1
	74380	SNAP RING	1
12	72107-A	SLEEVE—flexible	1
13	72174	GASKET—outlet fitting	1
14	80451	SCREW—6-32 x 3/8 flat hd.	4

Index No.	Part No.	Nomenclature	No. Required
15	55738	VALVE—shut-off	1
16	55902	FUEL LINE—(to fuel pump inlet)	1
17	AA-72475	FITTING—outlet (w/tube)	1
18	80572	SCREW—10-32 x 5/8 pan hd.	2
	AA-72177-1	OIL PUMP—(see inset at left)	1
		Composed of	
19	AA-72178	TUBE and SCREEN	1
20	73693	SLEEVE—rubber	1
21	31733-1	ADAPTER—straight	1
22	31734	CONNECTOR—90° elbow	2
23	25527-1	BALL—check	2
24	71760	SPRING—check valve	2
25	71761	BODY—pump	1
26	71759	SCREW—plug	1
27	71762	SPRING—plunger	1
28	71763	TUBE—plunger	1
29	71765	ADAPTER—connector	1
30	71764	BUTTON—plunger	1
31	31733-1	ADAPTER—straight (to oil line)	1
32	31734	CONNECTOR—90° elbow	1
33	72681	PLATE—pump locking	1
34	71550	COVER—lubricator body	1

HOMELITE CHAIN SAW MODEL 5-30N

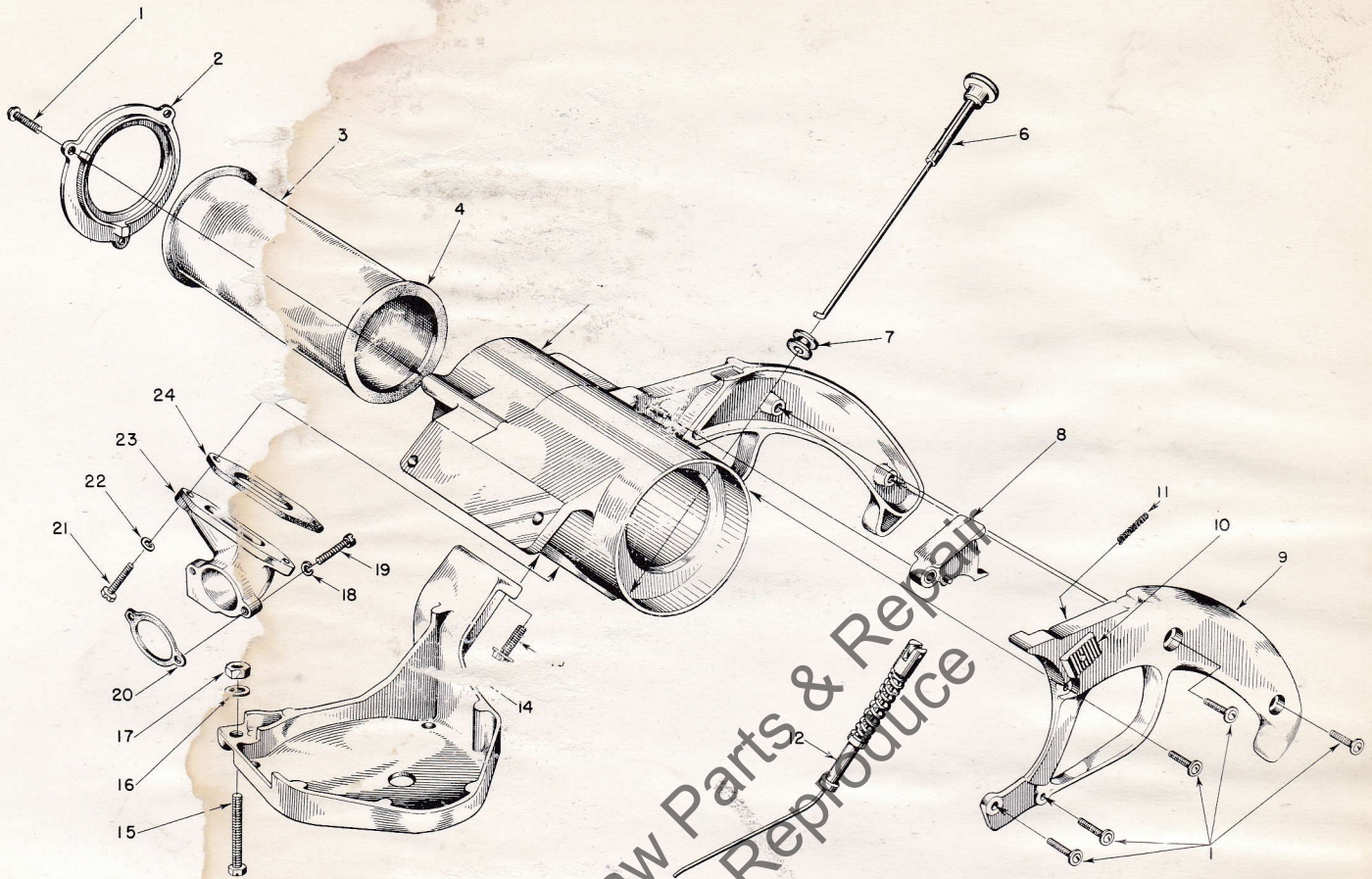


FIGURE 4—PISTOL GRIP PARTS

Index No.	Part No.	Nomenclature	No. Required
1	80560	SCREW—8-32 x 1/2	8
2	A-73869	COVER—air filter (includes gasket)	1
	73868	GASKET—air filter cover	1
3	AA-73061	FILTER—air	1
		Includes	
4	72967	GASKET—air filter	2
5	AA-73410-1	GRIP—pistol	1
6	AA-73392	ROD—choke	1
7	S-1007-1	GROMMET	1
8	AA-73055	TRIGGER—throttle	1
9	AA-73056	COVER—pistol grip	1
		Includes	
10	AA-73448	LOCK—throttle	1
		Includes	
11	72970	SPRING—throttle lock	1

Index No.	Part No.	Nomenclature	No. Required
12	A-73804	SHAFT—throttle	1
13	80581	SCREW—1/4-20 x 5/8 hex. hd.	2
14	72859	GUARD—carburetor	1
15	80066-2	BOLT—1/4-20 x 1 1/2 hex. hd.	1
16	83009	WASHER—1/4 lock	1
17	81013	NUT—1/4-20 hex.	1
18	83000	WASHER—#8 lock	1
19	80023	SCREW—8-32 x 5/8 fil. hd.	1
20	72971	GASKET—carburetor intake	1
21	80566	SCREW—10-32 x 7/8 hex. hd.	2
22	83046	WASHER—#10 lock	1
23	72856-1	ELBOW—air cleaner	1
24	72995	GASKET—air elbow	1

HOMELITE CHAIN SAW MODEL 5-30N

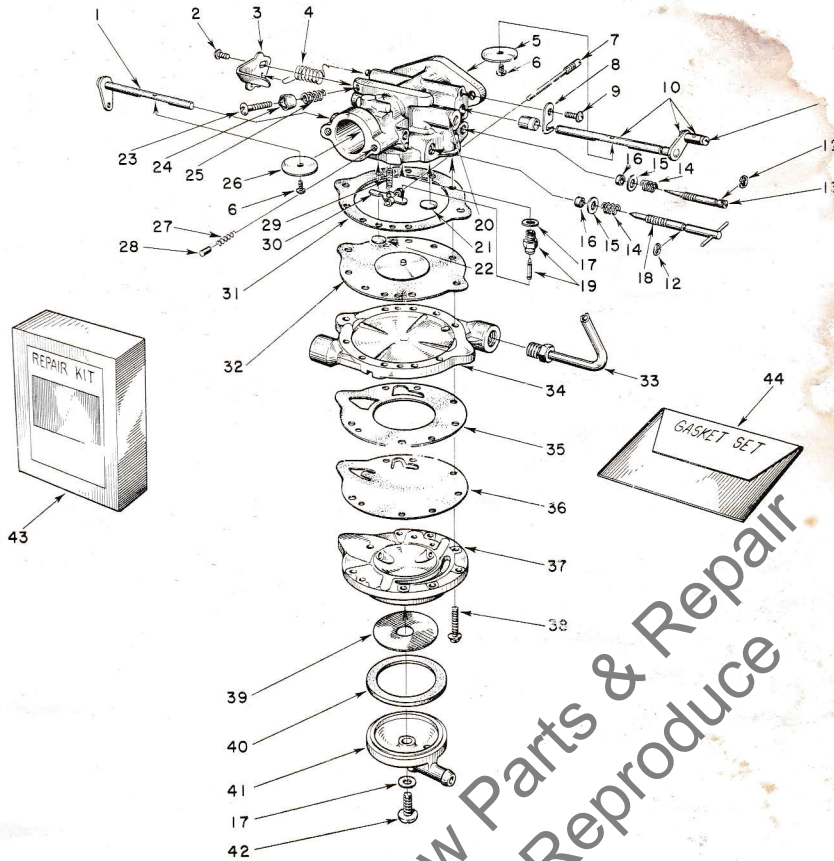


FIGURE 5—BROWN CARBURETOR PARTS

Index No.	Part No.	Nomenclature	No. Required	Index No.	Part No.	Nomenclature	No. Required
	A-74866	CARBURETOR (Brown Model 1-CS)	1			Includes	
		Composed of		21	†74977	PLUG—Welch	1
1	A-74992	SHAFT & LEVER—choke	1	22	†74978	PLUG—Welch	1
2	†77042	SCREW—stop lever, 4-40 x 1/4 truss hd.	1	23	77040	SCREW—idle stop, 6-32 x 9/16 rd. hd.	1
3	74989	LEVER—throttle stop	1	24	77011	CUP—idle stop screw	1
4	†74990	SPRING—throttle return	1	25	77010	SPRING—idle stop screw	1
5	74980	SHUTTER—throttle	1	26	74991	SHUTTER—choke	1
6	77044	SCREW—shutter	2	27	77017	SPRING—choke friction	1
7	†A-77012	PIN—inlet control lever	1	28	77018	PIN—choke friction	1
8	†74981	CLIP—throttle shaft	1	29	†77015	SPRING—tension	1
9	†77041	SCREW—6-32 x 1/4 pan hd.	1	30	†77016	LEVER—inlet control	1
10	A-74983	SHAFT & LEVER—throttle	1	31	†77030	GASKET—main diaphragm	1
		Includes		32	†A-77019	DIAPHRAGM—main	1
11	77045	SCREW—swivel, 6-32 x 1/4 rd. hd.	1	33	A-77037	LINE—activator (not part of A-74866 Carburetor)	1
12	†77004	CLIP—spring retaining	2	34	77024	COVER—main diaphragm	1
13	†77009	SCREW—idle adjustment (includes 77004 clip)	1	35	†77025	GASKET—pump body	1
14	†77005	SPRING—adjustment screw	2	36	†77026	DIAPHRAGM—pump	1
15	†77006	WASHER—flat	2	37	77027	BODY—fuel pump	1
16	†77007	RING—square	2	38	77046	SCREW—body, 6-32 x 3/4 pan hd.	6
17	†77008	GASKET—fibre	2	39	†77028	SCREEN—fuel inlet strainer	1
18	†A-77001	SCREW—main adjustment (includes 77004 clip)	1	40	†77029	GASKET—strainer	1
19	†74996	NEEDLE & SEAT—inlet (includes 74997 gasket)	1	41	77031	COVER—fuel pump	1
20	A-77060	BODY—service	1	42	77043	SCREW—turret, 8-32 x 7/16 truss hd.	1
				43	77033	KIT—repair parts (RK-150)	1
				44	†77032	GASKET SET (GS-150)	1

† Included in 77032 Gasket Set.

‡ Included in 77033 Repair Parts Kit.

Always furnish saw model and serial number when ordering parts.

HOMELITE CHAIN SAW MODEL 5-30N

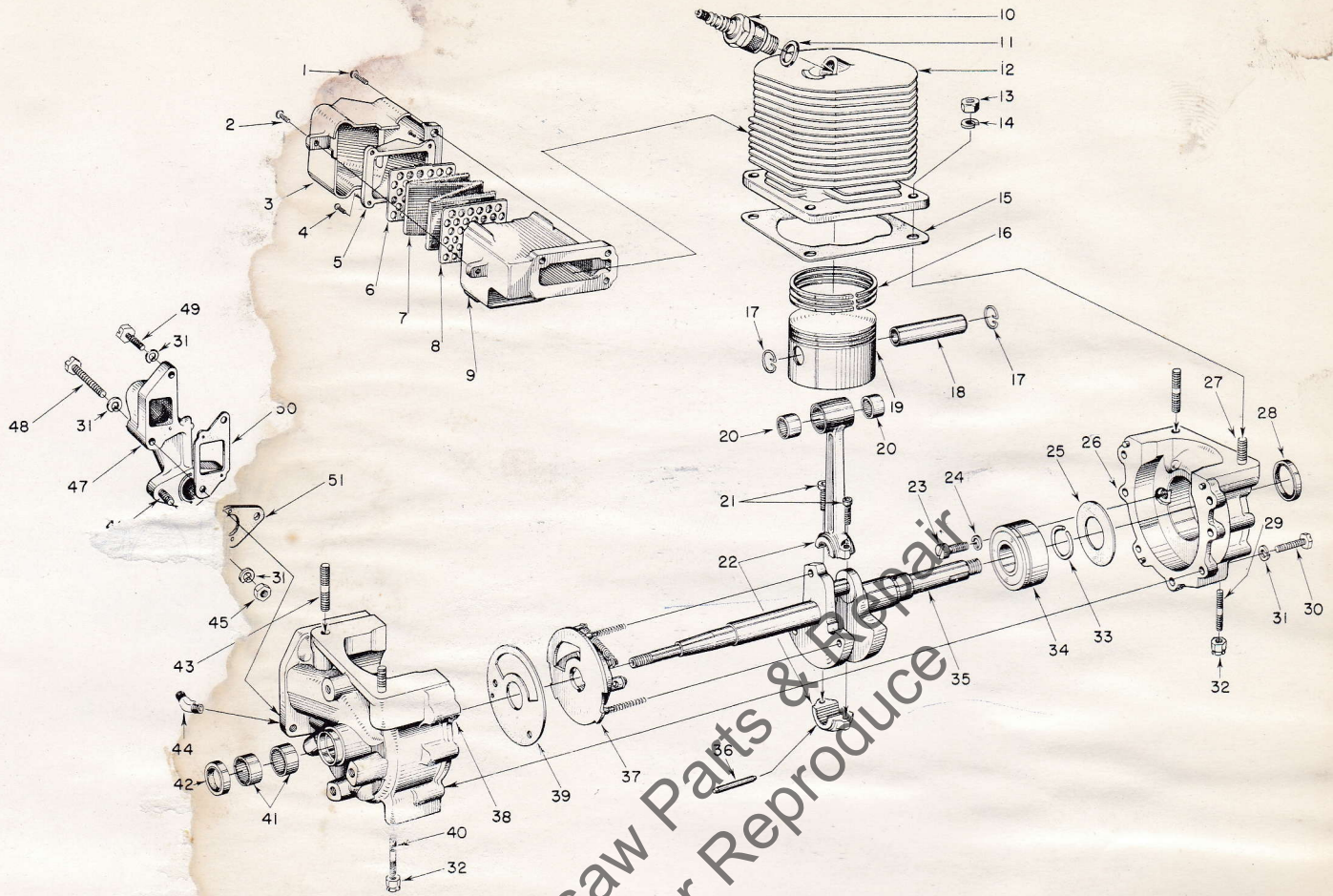


FIGURE 6—ENGINE PARTS

Index No.	Part No.	Nomenclature	No. Required	Index No.	Part No.	Nomenclature	No. Required
1	80057	SCREW— $\frac{1}{4}$ -20 x $\frac{7}{8}$ pan hd.	3	24	83061	WASHER—lock (special thin)	2
2	80579	SCREW—10-32 x $\frac{3}{8}$ pan hd.	1	25	71106	GASKET—sealing	1
3	73751	DAMPER—heat	1	26	A-74706	CRANKCASE—rear half	1
	A-73757	MUFFLER	1			Includes	
		Composed of		27	72787	STUD	2
4	80571	SCREW—6-32 x $\frac{3}{8}$ pan hd.	4	28	72413	SEAL—garlock	1
5	73753	CAP—muffler	1	29	55871	STUD	1
6	73756	RETAINER (outer)	1	30	80181-1	SCREW— $\frac{1}{4}$ -20 x $\frac{7}{8}$ hex. hd.	7
7	73754	ELEMENT—muffler	1	31	83009	WASHER— $\frac{1}{4}$ lock	11
8	73755	RETAINER (inner)	1	32	81114	NUT— $\frac{1}{4}$ -28 flex-lock	2
9	*	MUFFLER (shell)	1	33	50033	RING—retaining	1
10	72858	SPARK PLUG—Champion HO-3 (w/gasket)	1	34	71164-A	BEARING—main	1
11	25038	GASKET (included with spark plug)	1	35	A-77188	CRANKSHAFT w/studs	1
12	AA-73189	CYLINDER	1	36	AA-72206	ROLLERS (set of 31)	1
		Includes		37	A-6051	GOVERNOR	1
	72122	INSERT—helicoil	1	38	A-77127	CRANKCASE (front half)	1
13	25412	NUT—5/16-24 hex.	4			Includes	
14	83042	WASHER—5/16 lock	4	39	72767-A	PLATE—intake valve	1
15	74139	GASKET—cylinder	1	40	55871	STUD (same as index No. 29)	1
16	72830	RING—piston	3	41	73557	BEARING—needle	2
	AA-73401	PISTON	1	42	71110	SEAL—garlock	1
		Composed of		43	72787	STUD (same as index No. 27)	2
17	25502	RING—snap	2	44	77034	ADAPTER—activator line	1
18	*	PIN—piston	1	45	81013	NUT— $\frac{1}{4}$ -20 hex	2
19	*	PISTON	1	46	27464	STUD	2
	A-74552-A	ROD—connecting	1	47	74386-A	MANIFOLD—intake	1
		Composed of		48	80447-1	SCREW— $\frac{1}{4}$ -20 x $1\frac{1}{8}$ hex. hd.	1
20	71167	BEARING—needle	1	49	80218-1	SCREW— $\frac{1}{4}$ -20 x $\frac{3}{4}$ hex. hd.	1
21	80492	SCREW—10-32 x $\frac{1}{2}$ allen cap	2	50	72969	GASKET—intake manifold	1
22	*	ROD (includes cap)	1	51	73460-A	GASKET—carburetor flange	1
23	19238-A	SCREW—main bearing retaining	2				

* Not sold separately

Always furnish saw model and serial number when ordering parts.

HOMELITE CHAIN SAW MODEL 5-30N

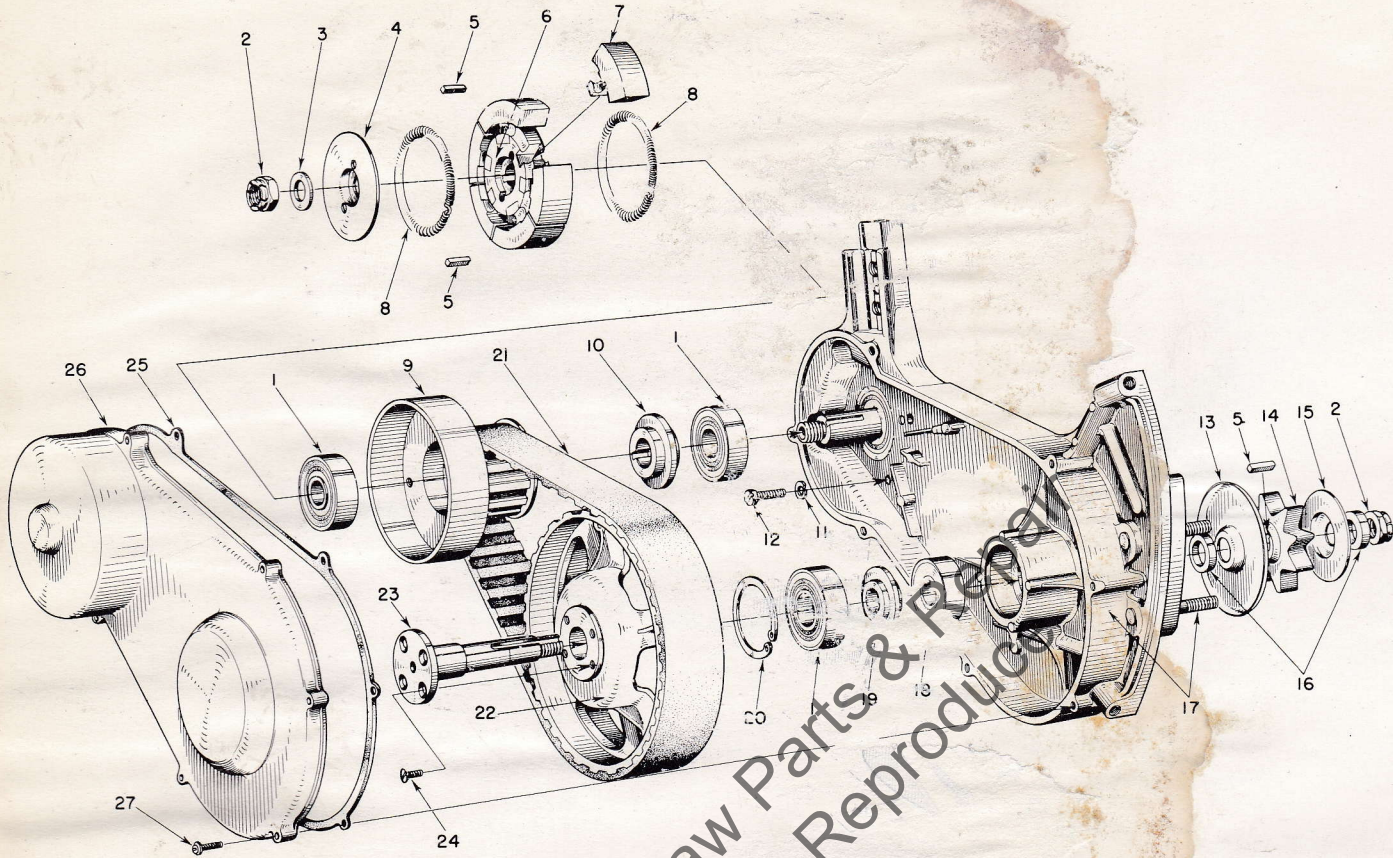


FIGURE 7—DRIVE CASE PARTS

Index No.	Part No.	Nomenclature	No. Required
1	72514	BEARING	3
2	81101	NUT	2
3	71193-B	WASHER—flat 1/2	1
4	73131	COVER—clutch	1
5	73215	KEY—3/16 sq. x 7/16	3
	AA-73213	CLUTCH	1
		Composed of	
6	73064	SPIDER	1
7	73063	SHOE	6
9	73214	SPRING	2
9	AA-73058	DRUM—clutch (includes sprocket)	1
10	73045	SPACER	1
11	83009	WASHER—1/4 lock	4
12	80218-1	SCREW—1/4-20 x 3/4 hex. hd.	4
13	73771	FLANGE—sprocket, inner	1
14	73252	SPROCKET	1

Index No.	Part No.	Nomenclature	No. Required
15	73253	FLANGE—sprocket, outer	1
16	73254	SPACER—sprocket	2
17		DRIVE CASE (See Figure 8 for breakdown)	1
18	72328	BEARING (small)	1
19	71819-A	SPACER—sprocket shaft bearing	1
20	31080	RING—retaining	1
21	73216	BELT—drive	1
22	73065	PULLEY—sprocket	1
23	71817-B	SHAFT—sprocket	1
24	80600	SCREW—10-32 x 1/2 flat hd.	4
	AA-73217	COVER—drive case	1
		Composed of	
25	72195-D	GASKET—drive case cover	1
26	*	COVER	1
27	80568	SCREW—8-32 x 7/8 pan hd.	7

* Not sold separately

HOMELITE CHAIN SAW MODEL 5-30N

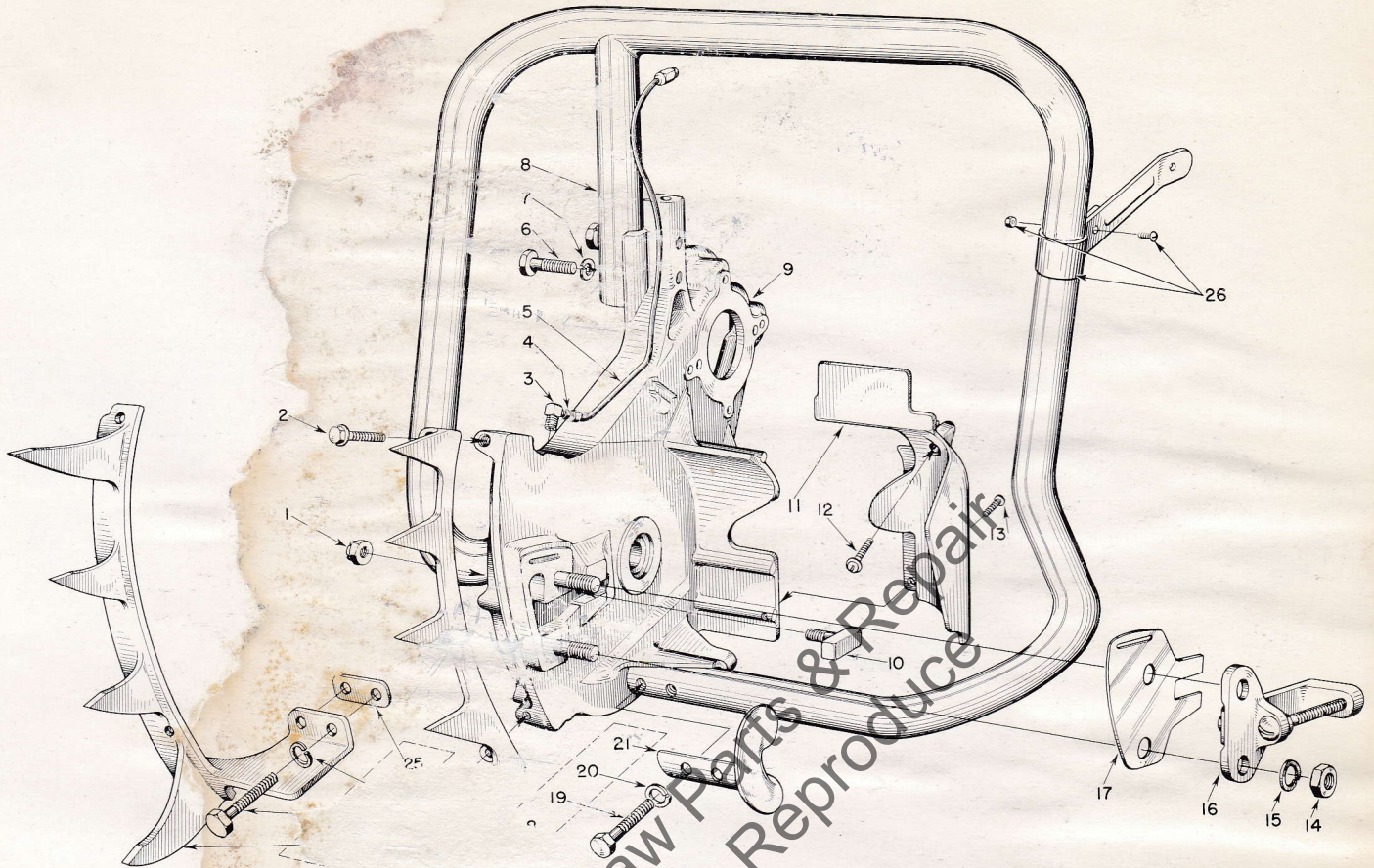


FIGURE 8—SAW END GROUP PARTS

Index No.	Part No.	Nomenclature	No. Required
1	81102	NUT—5/16-18	1
2	80573	SCREW—1/4-20 x 1 3/16 hex. hd.	2
3	31734	ELBOW—connector	1
4	31733-1	ADAPTER—straight	1
5	AA-72444	OIL LINE	1
6	80087	SCREW—5/16-18 x 1 1/2 hex. hd.	2
7	83003	WASHER—5/16 lock	4
8	AA-72697	HANDLE	1
9	A-74707	DRIVE CASE	1
		Includes	
	74582	STUD—guide bar (shown assembled)	2
10	72268	KEY—guide bar	1
11	73048	SHIELD—sawdust	1
12	80567	SCREW—8-32 x 3/4	1
13	80560	SCREW—8-32 x 1/2 pan hd.	1
14	81089	NUT—3/8-16 hex. hd.	2
15	83018	WASHER—3/8 lock	2
16	**	DEVICE—chain tension	1

Index No.	Part No.	Nomenclature	No. Required
		Composed of	
	71946-A	BRACKET—tension adjusting	1
	AA-72407	PLATE—adjusting (w/screw)	1
17	72374	SHIM—guide bar	1
	**	PARTS GROUP (for short spike model 5-30N)	
		Composed of	
18	73420	PLATE—spiked bumper, short	1
19	80087	SCREW (same as index No. 6)	2
20	83003	WASHER (same as index No. 7)	2
21	72223	GUARD—handle	1
	**	PARTS GROUP (for long spike model 5-30NA)	
		Composed of	
22	72739-A	PLATE—spiked bumper, long	1
23	80197	SCREW—5/16-18 x 2 hex. hd.	2
24	83003	WASHER—5/16 (same as index No. 7)	2
25	73281	SPACER—handle	1
26	A-74201	BRACE—handle (w/screw and nut)	1

** Order individual pieces

HOMELITE CHAIN SAW MODEL 5-30N

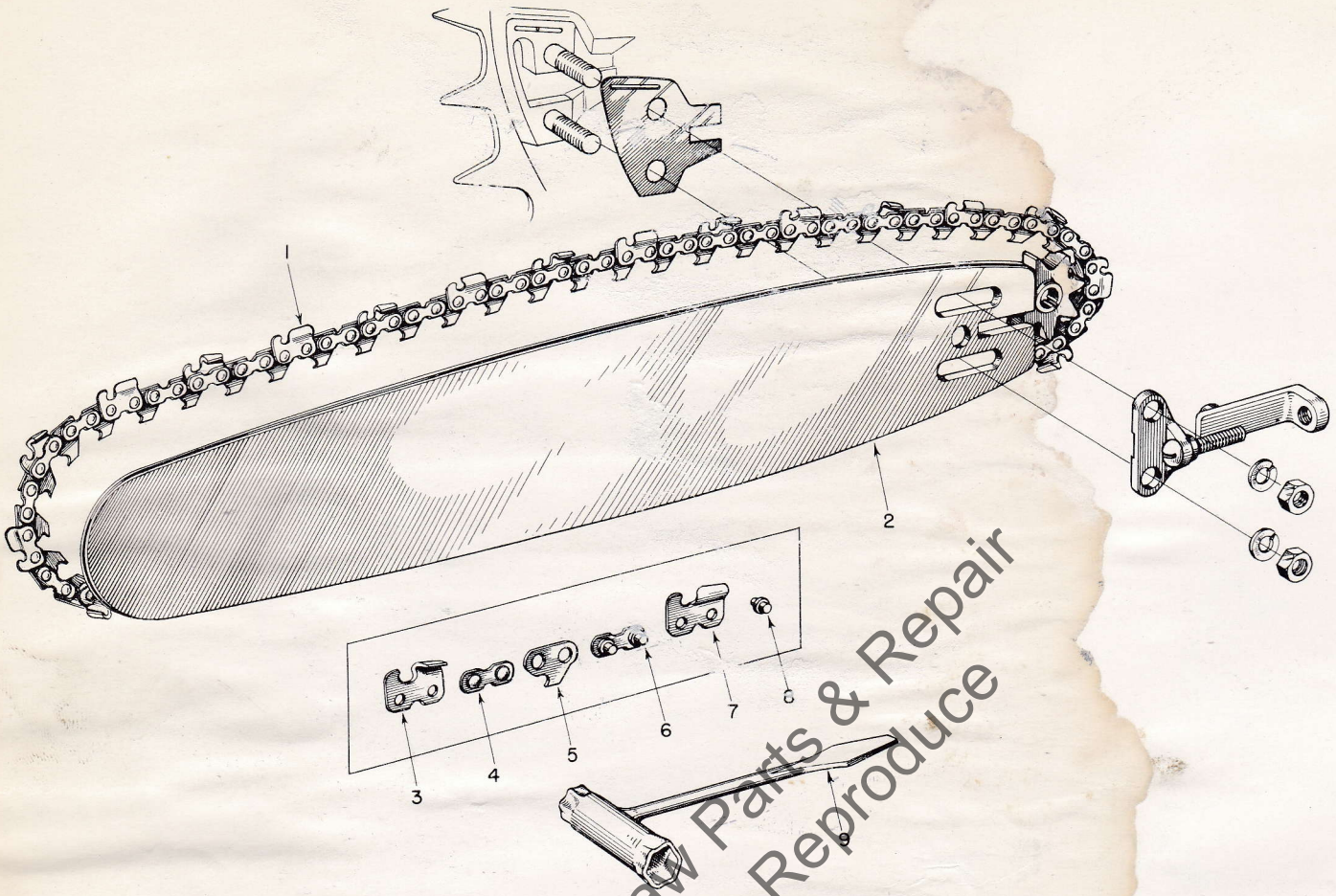


FIGURE 9—CHAIN AND GUIDE BAR PARTS

Index No.	Part No.	Nomenclature	No. Required	Index No.	Part No.	Nomenclature	No. Required
1	AA-72977	18" CHAIN—#4, 9/16 pitch .063 (w/kit)	1		AA-72973	KIT—#4 chain repair (packaged with chain)	1
	AA-72978	23" CHAIN—#4, 9/16 pitch .063 (w/kit)	1			Includes	
	AA-72979	28" CHAIN—#4, 9/16 pitch .063 (w/kit)	1	3	72597-2	CUTTER—right	1
	AA-72983	33" CHAIN—#4, 9/16 pitch .063 (w/kit)	1	4	72595	LINK—connecting (plain)	2
	AA-72981	38" CHAIN—#4, 9/16 pitch .063 (w/kit)	1	5	72974	LINK—drive	1
	AA-72982	42" CHAIN—#4 9/16 pitch .063 (w/kit)	1	6	AA-73603	LINK—connecting (with rivets)	2
	AA-72984	44" CHAIN—#4, 9/16 pitch .063 (w/kit)	1	7	72979-1	CUTTER—left	1
	AA-73564	50" CHAIN—#4, 9/16 pitch .063 (w/kit)	1	8	72959	RIVET	4
	AA-73563	60" CHAIN—#4, 9/16 pitch .063 (w/kit)	1	AA-73314	KIT—#10 chain repair (not shown)	1	
	AA-73338	18" CHAIN—#10, 1/2" pitch .063 (w/kit)	1		Includes		
	AA-73340	23" CHAIN—#10, 1/2" pitch .063 (w/kit)	1	72964	CUTTER—right	1	
	AA-73342	28" CHAIN—#10, 1/2" pitch .063 (w/kit)	1	72960	LINK—connecting (plain)	2	
	AA-73344	33" CHAIN—#10, 1/2" pitch .063 (w/kit)	1	73383	LINK—drive	1	
	AA-73346	38" CHAIN—#10, 1/2" pitch .063 (w/kit)	1	AA-72961	LINK—connecting (with rivets)	2	
	AA-73350	44" CHAIN—#10, 1/2" pitch .063 (w/kit)	1	72963	CUTTER—left	1	
2	A-74318	18" BAR—track hardened plus extra hard tip	1	72959	RIVET	4	
	A-74323	23" BAR—track hardened plus extra hard tip	1	9	22808	WRENCH—combination	1
	A-74328	28" BAR—track hardened plus extra hard tip	1	22670	FILE HOLDER—1/2" pitch	1	
	73330-1	33" BAR—extra hard tip	1		Includes		
	73332-1	38" BAR—extra hard tip	1	22676-2	FILE—1/4" rd.	1	
	73336-1	44" BAR—extra hard tip	1	22944	FILE HOLDER—9/16" pitch	1	
	73565-1	50" BAR—extra hard tip	1		Includes		
	73562-1	60" BAR—extra hard tip	1	22970	FILE—9/32" rd.	1	

Always furnish saw model and serial number when ordering parts.

HOMELITE CHAIN SAW MODEL 5-30N

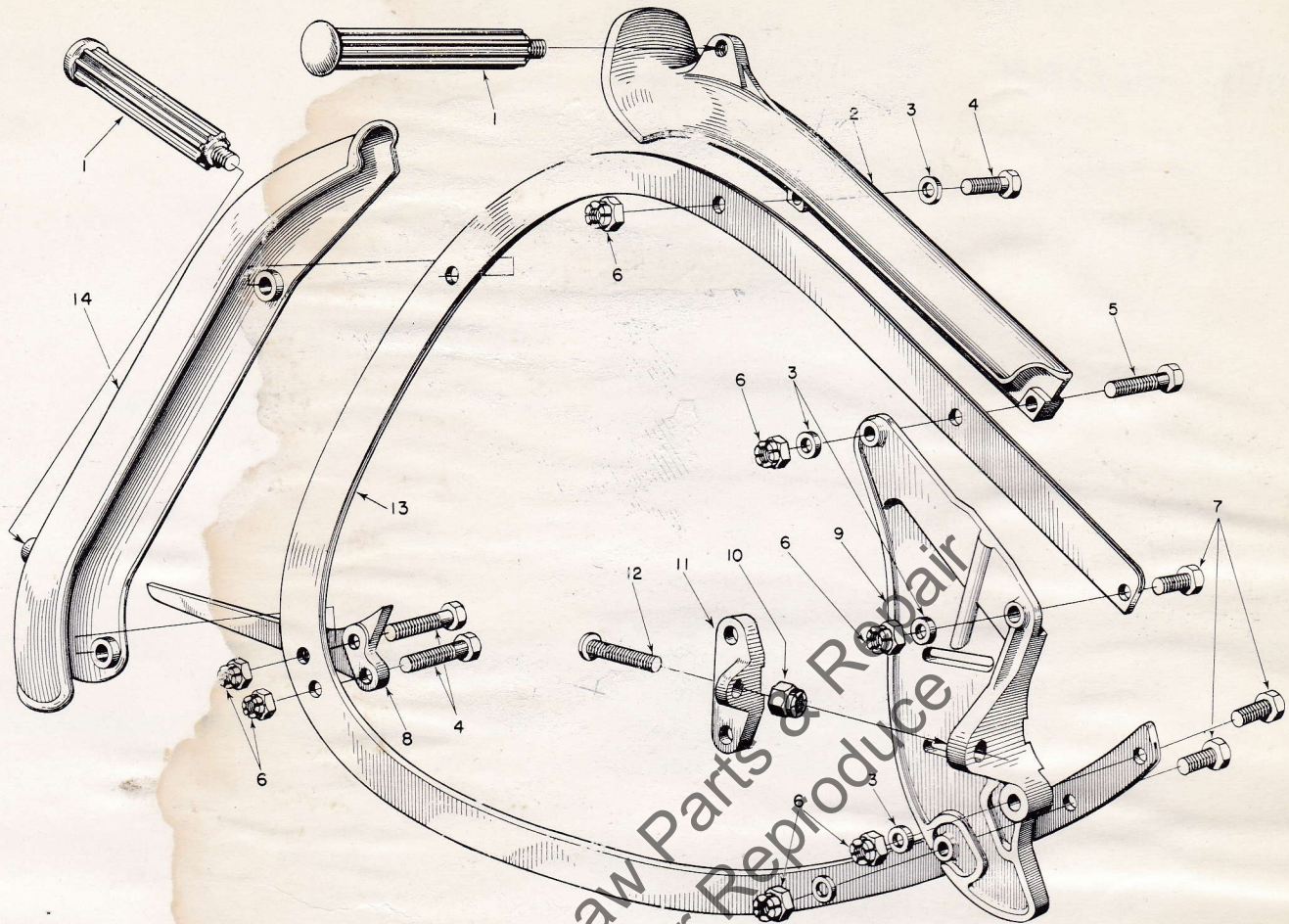


FIGURE 10—BOW ATTACHMENT PARTS

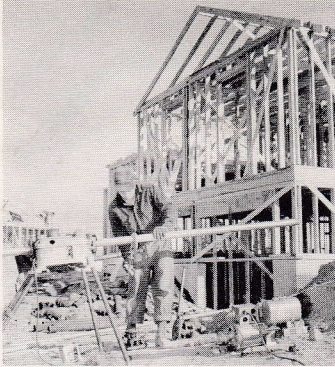
Index No.	Part No.	Nomenclature	No. Required
	A-73875	BOW KIT	1
		Includes	
1	72226	HANDLE	1
2	72779	GUARD	1
3	84001	WASHER—5/16 flat	5
4	80546	SCREW—5/16-24 x 1 1/4 hex. hd.	3
5	80606	SCREW—5/16-24 x 1 3/4 hex. hd.	1
6	81112	NUT—5/16-24 hex. lock	7
7	80545	SCREW—5/16-24 x 1	3
8	72784	SPUR—plunging	1
9	A-73876	PLATE—mounting	1
		Includes	
	80580	SCREW—headless	1

Index No.	Part No.	Nomenclature	No. Required
10	81123	NUT—adjusting plate	1
11	71947-A	PLATE—adjusting	1
12	80617	SCREW—adjusting plate	1
13	A-73739	14" GUIDE—hard-surfaced	1
	A-73740	18" GUIDE—hard surfaced	1
	AA-73235	END—helper (optional use—18" bow only)	1
		Includes	
14	72827	GUARD	1
	72226	HANDLE (same as index No. 1)	1
	AA-73340	CHAIN—#10 (for 14" bow)	1
	AA-73342	CHAIN—#10 (for 18" bow)	1
	AA-73314	KIT—chain repair (see figure 9 for breakdown)	1

**You'll
SPEED WORK
and make
MORE MONEY
with...**



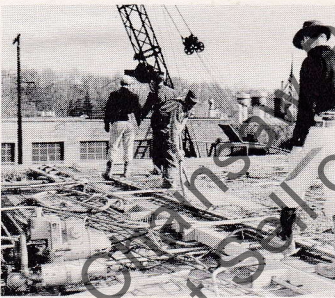
HOMELITE
SELF-PRIMING PUMPS



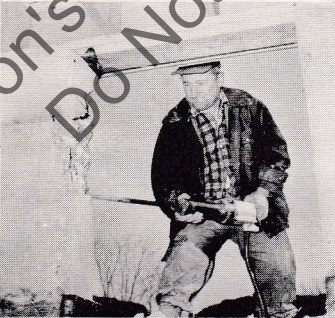
HOMELITE
DEPENDABLE GENERATORS



HOMELITE
POWERFUL ONE-MAN CHAIN SAWS



HOMELITE
ONE-MAN CONCRETE VIBRATORS



HOMELITE — BOSCH (Germany)
ELECTRIC BUILDER'S HAMMERS

All Powered By Famous HOMELITE Engines

Homelite's two-cycle gasoline engines are the most efficient and dependable units of their kind ever built. Their two-cycle design, developed to perfection by Homelite engineers over the past 35 years, gives maximum power for the least weight because power is produced at every piston down stroke. As an added advantage, this design requires fewer moving parts which means greater dependability and lower maintenance.

HOMELITE

a division of Textron Inc.
PORT CHESTER, N. Y., U. S. A.

Part No. 22797-1
20M-4-57

Litho in U.S.A.
Brownie Press