

HOMELITE

Chain Saw

HOMELITE
Div. of Textron Inc.
1818 W. 16th St.
Indianapolis
ME 2-2451

August 1957



Leon's Chainsaw Parts & Repair
Do Not Sell or Reproduce

PARTS LIST



Model 5-20

HOMELITE CHAIN SAW MODEL 5-20

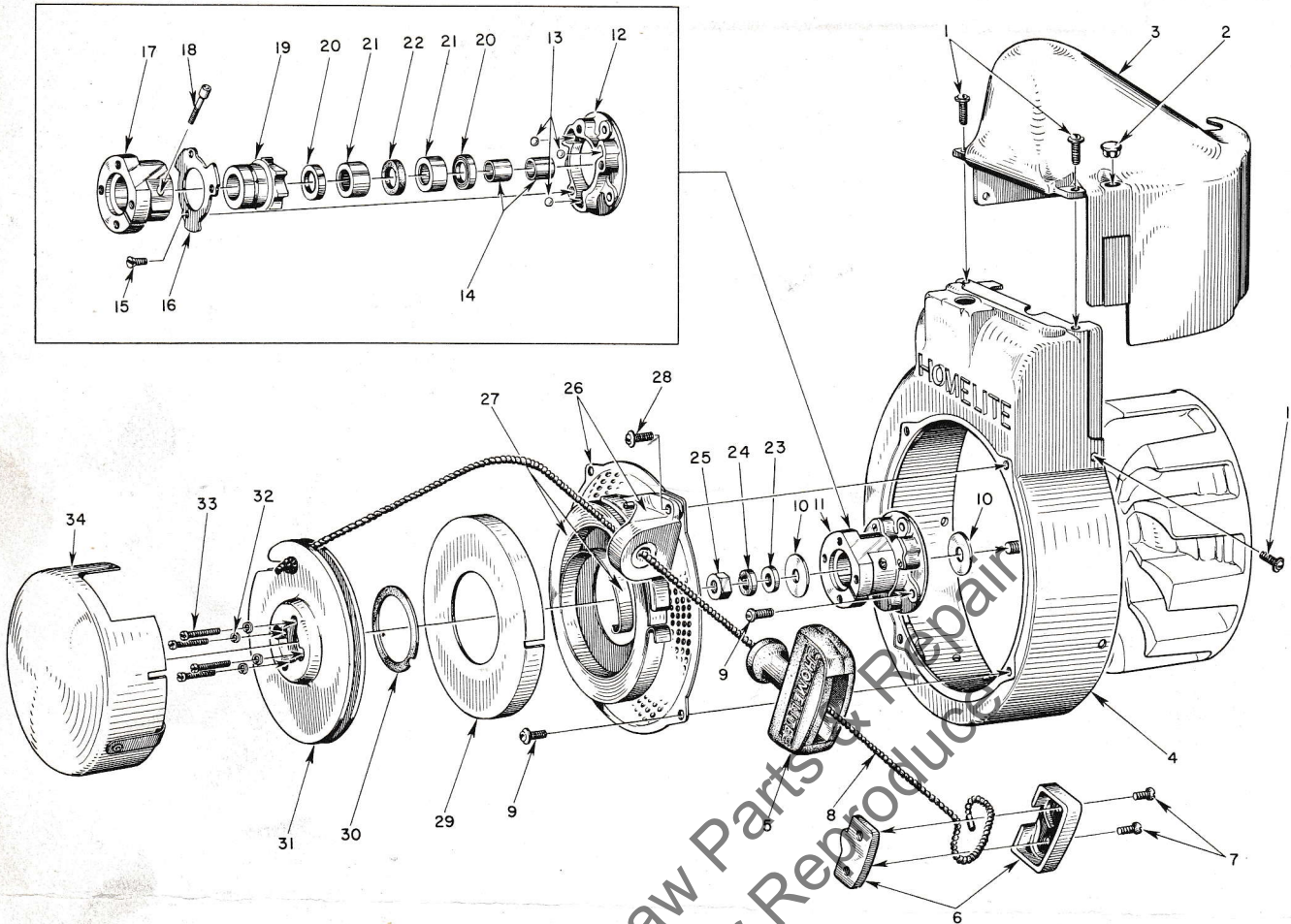
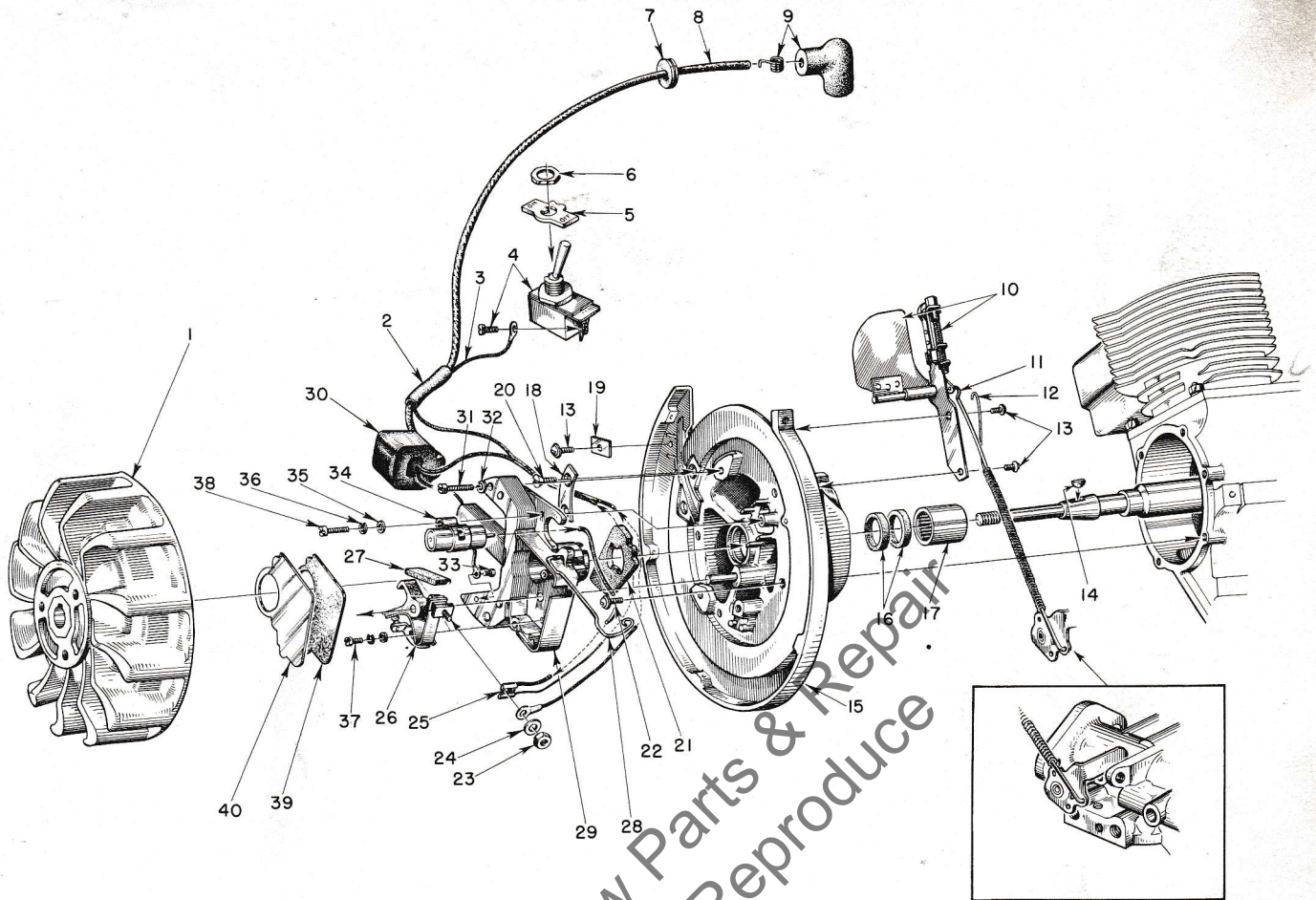


FIGURE 1 — RECOIL STARTER

AUGUST 1957

Index No.	Part No.	Description	No. Required	Index No.	Part No.	Description	No. Required
1	80577	SCREW—8-32 x 3/8 pan hd.	7	19	A-55348	Includes RATCHET—w/washer	1
2	32814	PLUG	1			Includes	
3	55015-B	SHIELD—cylinder	1		55271	WASHER—formica	1
4	AA-55208	SHROUD—air, w/inserts	1	20	55272	SEAL—garlock	2
5	55937	GRIP—starting	1	21	55215	BEARING—needle	2
6	A-56081	INSERT—grip w/cover	1	22	55214	FELT	1
		Includes		23	84070	WASHER—3/8 flat aluminum	1
7	80619	SCREW	2	24	83018	WASHER—3/8 lock	1
8	55898	ROPE—nylon	1	25	81124	NUT—3/8 hex	1
9	80579	SCREW—10-32 x 3/8 pan hd.	6	26	A-55580	SCREEN—air	1
10	55585	WASHER—thrust	2			Includes	
11	AA-55211-1	BALL DRIVE	1		AA-55222-A	BRACKET w/55363-A bushing	1
		Includes		27	71470-A	SPRING—recoil	1
12	55054-A	PLATE—ball drive	1	28	80576	SCREW—10-32 x 1/8 pan hd. (through	
13	55217	BALL—steel	3			bracket)	1
14	55584	SLEEVE	2	29	71603	COVER—spring housing	1
15	80588	SCREW—5-40 x 3/16 flat hd.	3	30	71588	SHIM—plastic	as req'd.
	AA-55212-1	RATCHET & HUB	1	31	AA-55223-A	PULLEY—w/pin	1
		Includes		32	83004	WASHER—#6 lock	4
16	55097	RETAINER—ball	1	33	80475	SCREW—6-32 x 3/4 fil. hd.	4
17	A-55342	HUB & SCREW	1			Includes	
		Includes		34	AA-73234-1	COVER—pulley	1
18	72295-A	SCREW—hub	1		55731	DECAL—5-20 (for pulley cover)	1
	AA-55213	RATCHET & BEARING	1				

HOMELITE CHAIN SAW MODEL 5-20



Assemble Governor Arm into rear hole in Throttle Stop Lever as indicated.

FIGURE 2 — IGNITION AND GOVERNOR PARTS

AUGUST 1957

Index No.	Part No.	Description	No. Required
1	55994	ROTOR	1
2	55290	SLEEVE—insulating	1
3	55990	LEAD—ground	1
4	AA-72094-A	SWITCH w/screw	1
		Includes	
5	55879	PLATE (on-off)	1
6	72084-A1	NUT	1
7	60929	GROMMET	1
8	55235-A	LEAD—high tension	1
9	A-55373	TERMINAL (sparky)	1
10	A-55796	GOVERNOR	1
		Includes	
	84066	WASHER—governor arm burr	1
11	55735	ARM—governor	1
12	55588	SPRING	1
13	80575	SCREW—8-32 x 1/4 pan hd.	3
14	75078	KEY—rotor	1
15	A-56079	BACKPLATE w/pivot post	1
		Includes	
16	71597	SEAL—garlock	2
17	55204	BEARING—needle	1
18	55962	CLAMP—inner	1

Index No.	Part No.	Description	No. Required
19	55161	CLAMP—outer	1
20	80598	SCREW—6-32 x 5/16 flat hd.	2
21	55989	WASHER—sealing, felt	1
22	80576	SCREW—10-32 x 3/16 pan hd.	6
23	55982	NUT—terminal	1
24	55983	WASHER—terminal	1
25	*	TERMINAL—jam-tite	1
26	A-55971	POINTS—(set)	1
27	55984	WICK—felt	1
28	55980	CLAMP—dust cover	1
29	55969	BOX—breaker w/core	1
30	55986	COIL	1
31	80660	SCREW—10-24 x 7/8 fil. hd.	2
32	83046	WASHER—#10 lock	2
33	55977	SCREW	1
34	55987	CONDENSER w/terminal	1
35	84048	WASHER—flat	2
36	83060	WASHER—lock	2
37	55985	SCREW—8-32 x 3/8 fil. hd.	1
38	55988	SCREW	1
39	55978	GASKET—dust cover	1
40	55979	COVER—dust	1

*Not available separately; replacement coils and condensers supplied with separate terminals.

HOMELITE CHAIN SAW MODEL 5-20

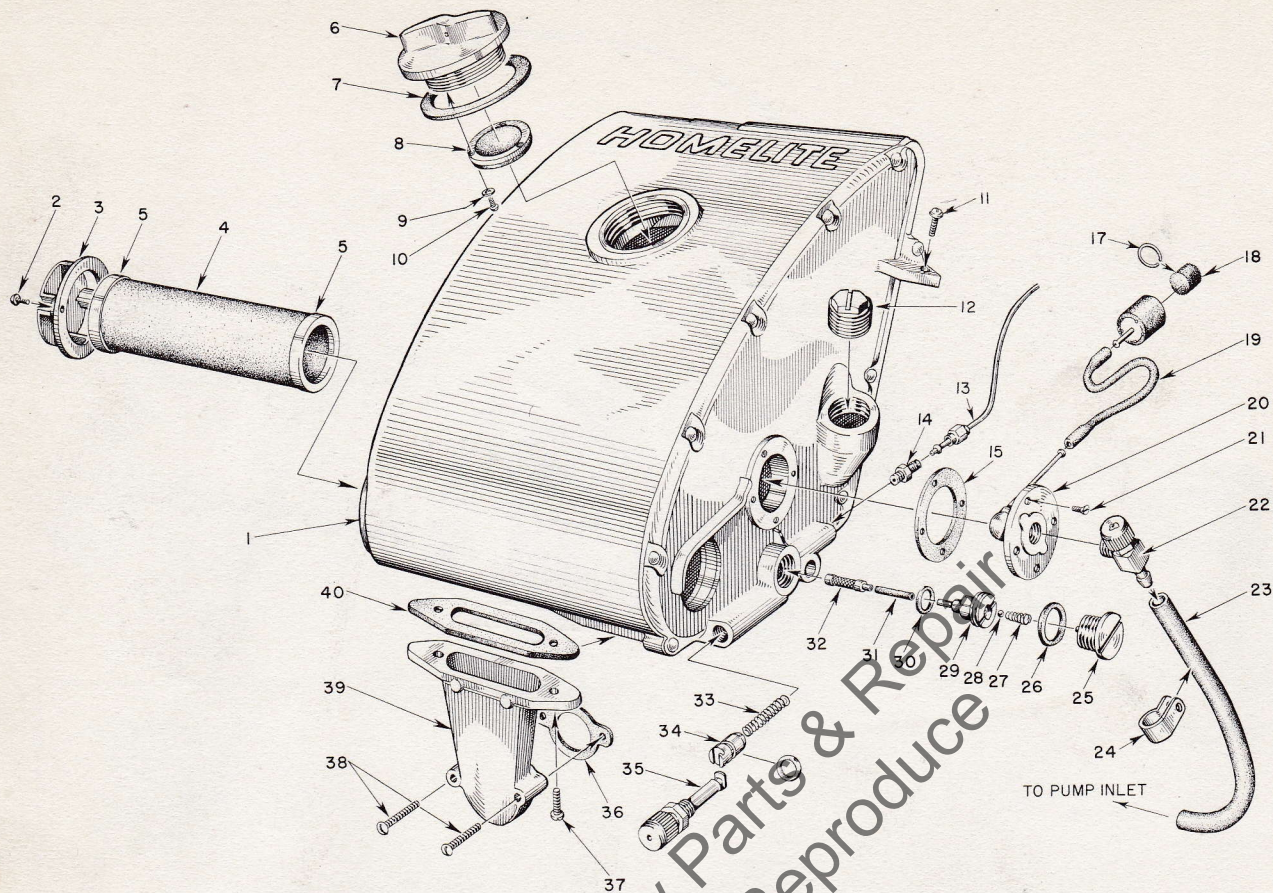


FIGURE 3 — FUEL TANK

AUGUST 1957

Index No.	Part No.	Description	No. Required
1	A-55709	FUEL TANK	1
		Includes	
2	80571	SCREW—6-32 x 3/8 pan hd.	2
3	55066-A	CAP—air filter	1
4	A-55531	FILTER—air	1
		Includes	
5	55530	GASKET (cemented to filter)	2
	55729-1	DECAL—instructions	1
	55249	DECAL—Homelite	1
6	A-55305	CAP—fuel	1
		Includes	
7	72173	GASKET	1
8	A-55301-B	VALVE—relief	1
9	83083	WASHER—#3 lock	3
10	80592	SCREW—3-48 x 1/4 rd. hd.	3
11	80582	SCREW—8-32 x 5/8 pan hd.	1
12	55140-A	CAP—oil filler	1
13	AA-55191	LINE—oil	1
14	A-55824	VALVE—check	1
15	72174	GASKET	1
16	A-74375	BODY—fuel strainer	1
		Includes	
17	74380	RING—snap	1

Index No.	Part No.	Description	No. Required
18	74374	FILTER—felt	1
19	72107-A	SLEEVE—flexible	1
20	AA-72475	FITTING—fuel outlet	1
21	80451	SCREW—6-32 x 3/8 flat hd.	4
22	55738	VALVE—shut-off	1
23	A-55801	LINE—fuel	1
24	56014	CLIP—fuel line, nylon	1
25	AA-55167	CAP—oil supply line	1
26	55107	GASKET	1
27	55288-A	SPRING—check valve	1
28	25527	BALL—check	1
29	55109-A	SEAT—check ball	1
30	55110	GASKET	1
31	55133-A	SLEEVE—flexible	1
32	AA-55259-A	PICK-UP—oil	1
33	71762	SPRING—plunger	1
34	A-74406	TUBE—plunger (includes 74388 "O" ring)	1
35	71764	BUTTON—plunger	1
36	72971-1	GASKET—air elbow	1
37	80572	SCREW—10-32 x 5/8 pan hd.	2
38	80638	SCREW—10-32 x 1 1/4 pan hd.	2
39	55019-2	ADAPTER—air filter	1
40	55059	GASKET—adapter	1

HOMELITE CHAIN SAW MODEL 5-20

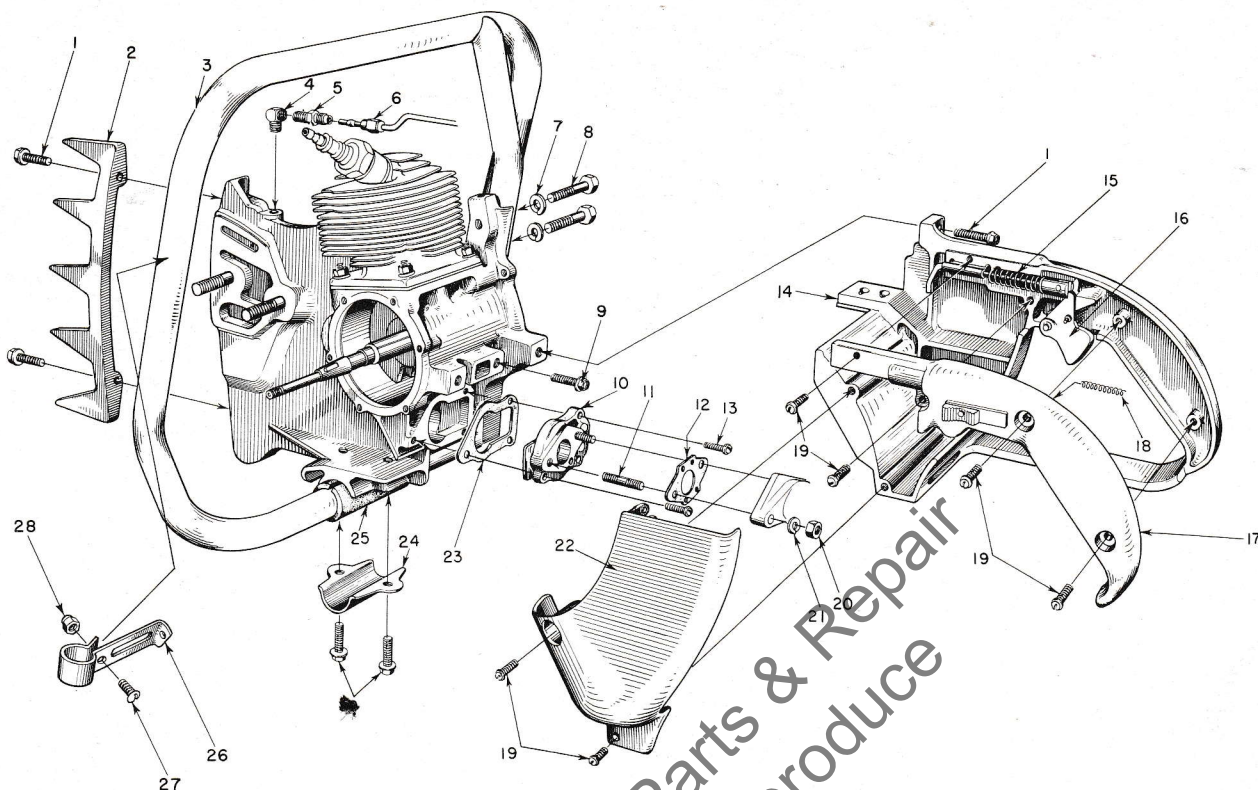


FIGURE 4 — HANDLE, GRIP AND REED VALVE PARTS

AUGUST 1957

Index No.	Part No.	Description	No. Required
1	80573	SCREW— $\frac{1}{4}$ -20 x $1\frac{3}{16}$ hex hd., spin-lock	5
2	55103	PLATE—bumper	1
3	A-55518	HANDLE—wrap-around (5-20)	1
		Includes	
	80308	SCREW— $\frac{5}{16}$ -18 x 1 Allen sock't hd.	1
	AA-55119	HANDLE—flush-cut (5-20A)	1
4	31734	ELBOW—connector	1
5	31733-1	ADAPTER—straight	1
6	AA-55191	LINE—chain oil	1
7	83003	WASHER— $\frac{5}{16}$ lock	2
8	80087	SCREW— $\frac{5}{16}$ -18 x $1\frac{1}{2}$ hex hd.	2
	28097	PLUG—pipe, $\frac{1}{8}$	1
9	80581	SCREW— $\frac{1}{4}$ -20 x $\frac{9}{8}$ hex hd., spin-lock	4
10	A-55800-A	ADAPTER—reed valve	1
11	27464	STUD (included in A-55800-A)	2
12	55553	GASKET—carburetor	1
13	80583	SCREW—10-32 x $\frac{3}{4}$ pan hd.	3
14	AA-55281	GRIP—pistol	1
15	A-55737	ROD—throttle	1

Index No.	Part No.	Description	No. Required	
		Includes		
	55045-A	SPRING	1	
16	AA-55207	TRIGGER	1	
17	AA-55228	COVER—grip	1	
		Includes		
	AA-55282	LOCK—throttle	1	
		Includes		
	18	72970	SPRING—lock	1
	19	80560	SCREW—8-32 x $\frac{1}{2}$ pan hd.	7
	20	81013	NUT— $\frac{1}{4}$ -20 hex	2
	21	83009	WASHER— $\frac{1}{4}$ lock	2
	22	55104	SHIELD—carburetor	1
	23	55116	GASKET—reed valve adapter	1
	24	55145	CLAMP—handle	1
	25	55146	CUSHION—handle	1
	26	A-55740	BRACE—handle	1
		Includes		
	27	80029	SCREW—10-32 x $\frac{3}{8}$	1
	28	81109	NUT—10-32 lock	1

HOMELITE CHAIN SAW MODEL 5-20

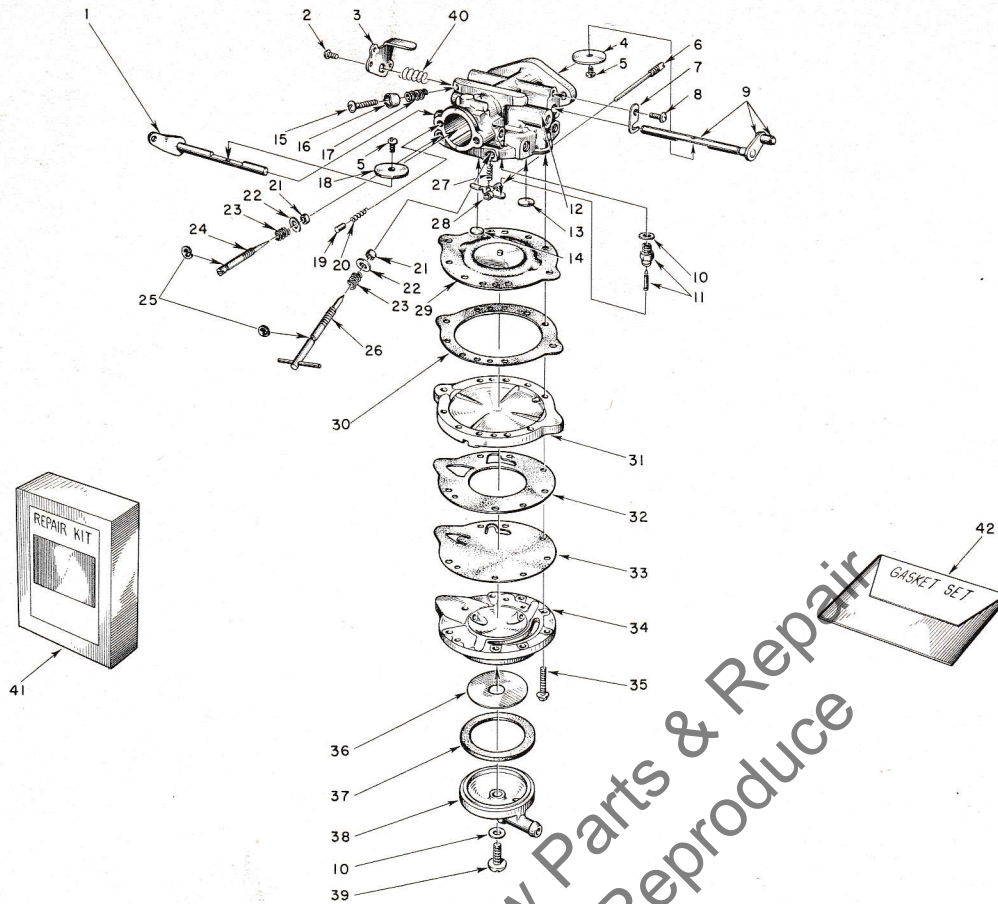


FIGURE 5 — BROWN CARBURETOR PARTS

AUGUST 1957

Index No.	Part No.	Description	No. Required	Index No.	Part No.	Description	No. Required
	A-55928	CARBURETOR—Brown Model 5-20	1	20	77017	SPRING—choke friction	1
		Includes		21	†77007	RING—square	2
1	A-77249	SHAFT AND LEVER—choke	1	22	*77006	WASHERS—adjustment packing	2
2	*77042	SCREW—stop lever, 4-40 x 1/4 truss hd.	1	23	*77005	SPRING—adjustment compression	2
3	77247	LEVER—throttle stop	1	24	*A-77251	SCREW—idle adjustment w/77004 clip	1
4	74980	SHUTTER—throttle	1	25	77004	CLIP—spring retaining	2
5	77044	SCREW—shutter, 4-40 x 1/8 rd. hd.	2	26	*A-77001	SCREW—main adjusting w/77004 clip	1
6	*A-77012	FULCRUM PIN	1	27	*77015	SPRING—tension	1
7	*74981	CLIP—throttle shaft	1	28	*77016	LEVER—diaphragm	1
8	*77041	SCREW—throttle clip, 6-32 x 1/4 pan hd.	1	29	†A-77250	DIAPHRAGM—main	1
9	A-77253	SHAFT—throttle	1	30	†77030	GASKET—main diaphragm	1
10	77267	GASKET—copper	2	31	77241	COVER—main diaphragm	1
11	*A-74996-A	NEEDLE AND SEAT—inlet w/gasket	1	32	†77025	GASKET—pump body	1
12	A-77248	BODY—service	1	33	†77026	DIAPHRAGM—pump	1
		Includes		34	77027	BODY—fuel pump	1
13	*74977	PLUG—welch 3/8	1	35	77160	SCREW—body 6-32 x 3/4 fil. hd.	6
14	*74978	PLUG—welch 5/16	1	36	*77028	SCREEN—strainer	1
15	77040	SCREW—idle speed, 6-32 x 9/16 rd. hd.	1	37	†77029	GASKET—strainer	1
16	77011	CUP—idle speed screw	1	38	77031	COVER—fuel pump	1
17	77010	SPRING—idle speed screw	1	39	77043	SCREW—turret, 8-32 x 7/16, truss hd.	1
18	74991	SHUTTER—choke	1	40	56175	SPRING	1
19	77018	PLUNGER—choke friction	1	41	77255	REPAIR PARTS KIT (RK-151)	1
				42	*77254	GASKET SET (GS-151)	1

† Included in GS-151 Gasket Set
 * Included in RK-151 Repair Parts Kit

HOMELITE CHAIN SAW MODEL 5-20

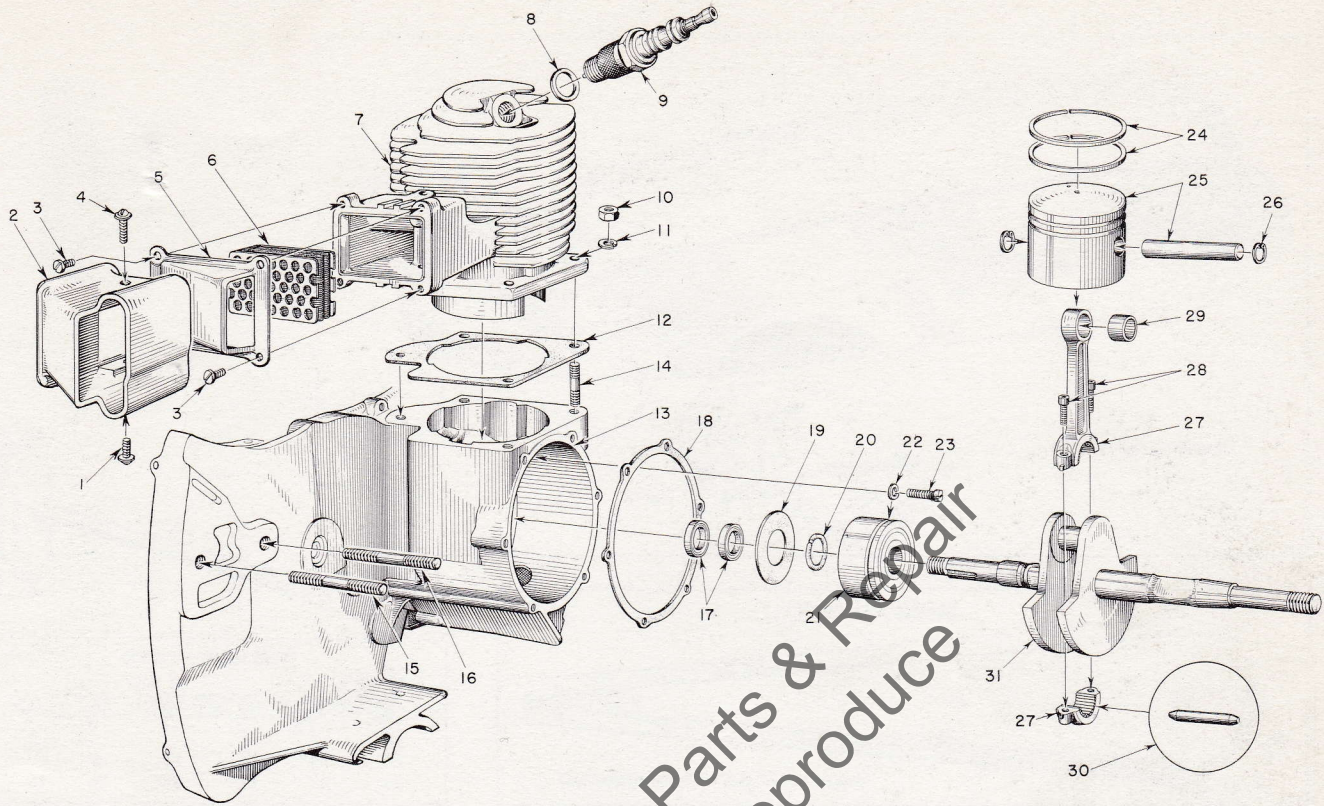


FIGURE 8 — ENGINE ASSEMBLY

AUGUST 1957

Index No.	Part No.	Description	No. Required
1	80625	SCREW—10-32 x 1/2 pan hd.	1
2	55506-1	DAMPER	1
3	80630	SCREW—6-32 x 1/2 pan hd.	4
4	80583	SCREW—10-32 x 3/4 pan hd.	1
5	55507	CAP—exhaust	1
6	A-56068	ELEMENT—muffler	1
7	55490	CYLINDER	1
8	25038	GASKET (included with spark plug)	1
9	71530	SPARK PLUG—Champion HO-8A	1
10	81065-2	NUT—1/4-28 hex	4
11	83009	WASHER—1/4 lock	4
12	55050-A	GASKET—cylinder	1
13	A-55598	CRANKCASE	1
		Includes	
14	55871	STUD	4
	28097	PLUG—pipe 1/8	1
15	55606	STUD—guide bar (long)	1
16	55056-D	STUD—guide bar (short)	1

Index No.	Part No.	Description	No. Required
17	71597	SEAL—garlock	2
18	55049	GASKET—back plate	1
19	55048-A	GASKET—crankcase sealing	1
20	55047	RING—bearing retaining	1
21	55193	BEARING—main	1
22	83061	WASHER—lock, special thin	2
23	19238-A	SCREW—main bearing retaining	2
24	55537	RING—piston	2
25	A-55599	PISTON and PIN	1
		Includes	
26	55095	RING—piston pin retaining	2
27	AA-55195	CONNECTING ROD	1
		Includes	
28	80541	SCREW—8-32 x 1/2 Allen cap	2
29	55196	BEARING—piston pin	1
30	AA-55280	ROLLERS (set of 27 needles)	1
31	55514-A	CRANKSHAFT	1

HOMELITE CHAIN SAW MODEL 5-20

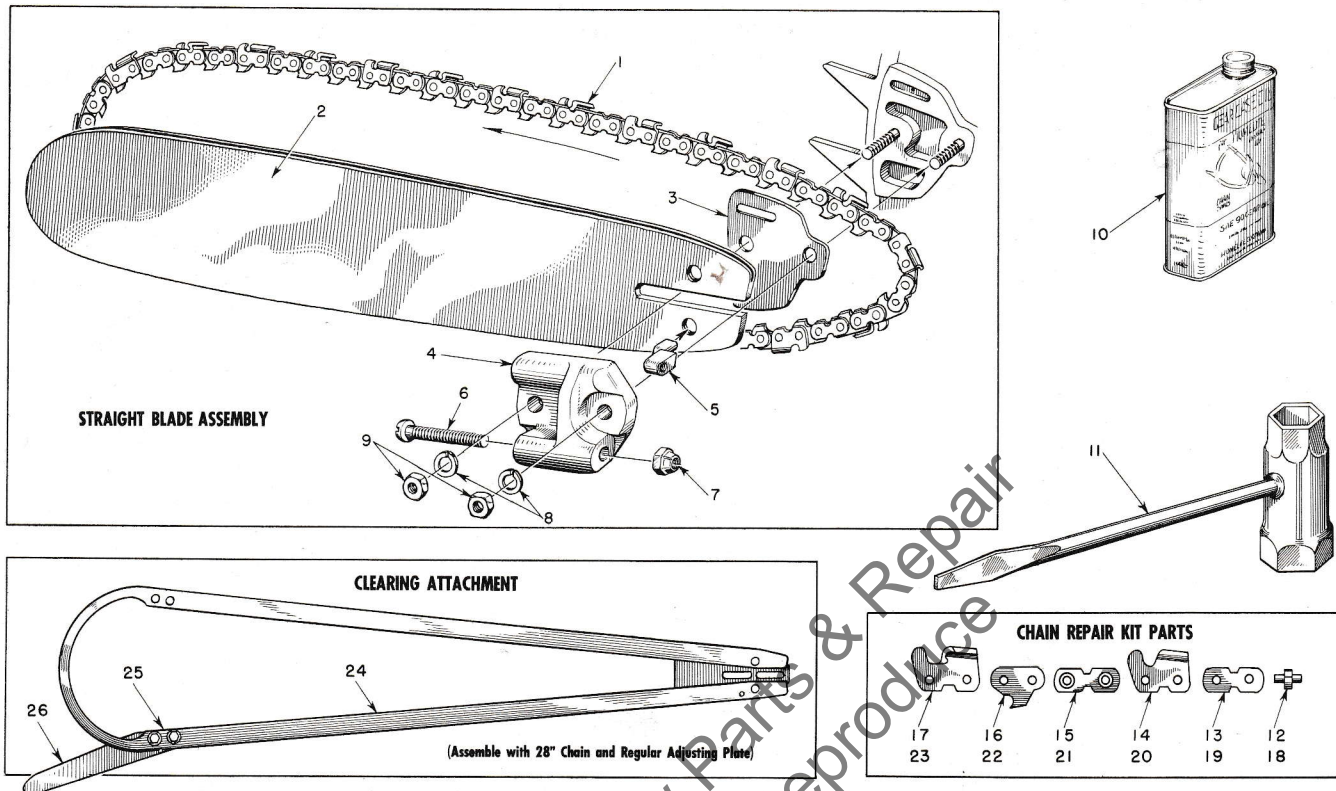


FIGURE 9 — SAW PARTS

Index No.	Part No.	Description	No. Required	Index No.	Part No.	Description	No. Required
		OREGON #10C 1/2 PITCH CHAIN		3	55128	SHIM	1
1	A-55338	14" CHAIN—(with kit)	1		A-55591	ADJUSTING PLATE	1
	AA-73338	18" CHAIN—(with kit)	1			Includes	
	A-55319	20" CHAIN—(with kit)	1	4	55551-B	PLATE—adjusting	1
*	AA-73340	23" CHAIN—(with kit)	1	5	55552	PIN—guide bar adjusting	1
**	AA-73342	28" CHAIN—(with kit)	1	6	80617	SCREW—5/16-18 x 2 round hd.	1
	AA-73344	33" CHAIN—(with kit)	1	7	81123	NUT—hex lock	1
	AA-73346	38" CHAIN—(with kit)	1	8	83018	WASHER—lock	2
	AA-73350	44" CHAIN—(with kit)	1	9	81089	NUT—3/8-16 hex	2
	AA-73597	50" CHAIN—(with kit)	1	10	55291-A	OIL—gear (pint can SAE-90)	1
	AA-73598	60" CHAIN—(with kit)	1	11	22808	WRENCH—combination	2
		ATKINS #163 CT 1/2 PITCH CHAMFERED CHAIN			AA-73314	REPAIR KIT—OREGON #10C CHAIN	
	A-51586	14" CHAIN—(with kit)	1			Includes	
	A-51587	18" CHAIN—(with kit)	1	12	72959	RIVET	4
	A-51588	20" CHAIN—(with kit)	1	13	72960	LINK—connecting (plain)	2
*	A-51589	23" CHAIN—(with kit)	1	14	72964	CUTTER—left	1
**	A-51590	28" CHAIN—(with kit)	1	15	AA-72961	LINK—connecting (w/rivets)	2
	A-51591	33" CHAIN—(with kit)	1	16	73383	LINK—drive	1
	A-51592	38" CHAIN—(with kit)	1	17	72963	CUTTER—right	1
	A-51593	44" CHAIN—(with kit)	1		A-51578	REPAIR KIT—ATKINS #163 CT CHAIN	
	A-51594	50" CHAIN—(with kit)	1			Includes	
	A-51595	60" CHAIN—(with kit)	1	18	51585	RIVET	4
2	A-55714	14" BAR—.063	1	19	51580	LINK—connecting (plain)	2
	A-55718	18" BAR—hard track plus extra hard tip .063	1	20	51582	CUTTER—left	1
	A-55720	20" BAR—hard track plus extra hard tip .063	1	21	A-51583	LINK—connecting (w/rivets)	2
	A-55723	23" BAR—hard track plus extra hard tip .063	1	22	51579	LINK—drive	1
	A-55728	28" BAR—hard track plus extra hard tip .063	1	23	51581	CUTTER—right	1
	55704-1	33" BAR—extra hard tip .063	1	24	A-56169	CLEARING ATTACHMENT	1
	55705-1	38" BAR—extra hard tip .063	1			Includes	
	55706-1	44" BAR—extra hard tip .063	1	25	80604	Screw—hex hd. 5/16-24 x 3/4	2
	55707-1	50" BAR—extra hard tip .063	1	26	73820	SPUR—plunging	1
	55708-1	60" BAR—extra hard tip .063	1				

* Also fits 14" bow attachment.
 ** Also fits clearing attachment.

HOMELITE CHAIN SAW MODEL 5-20

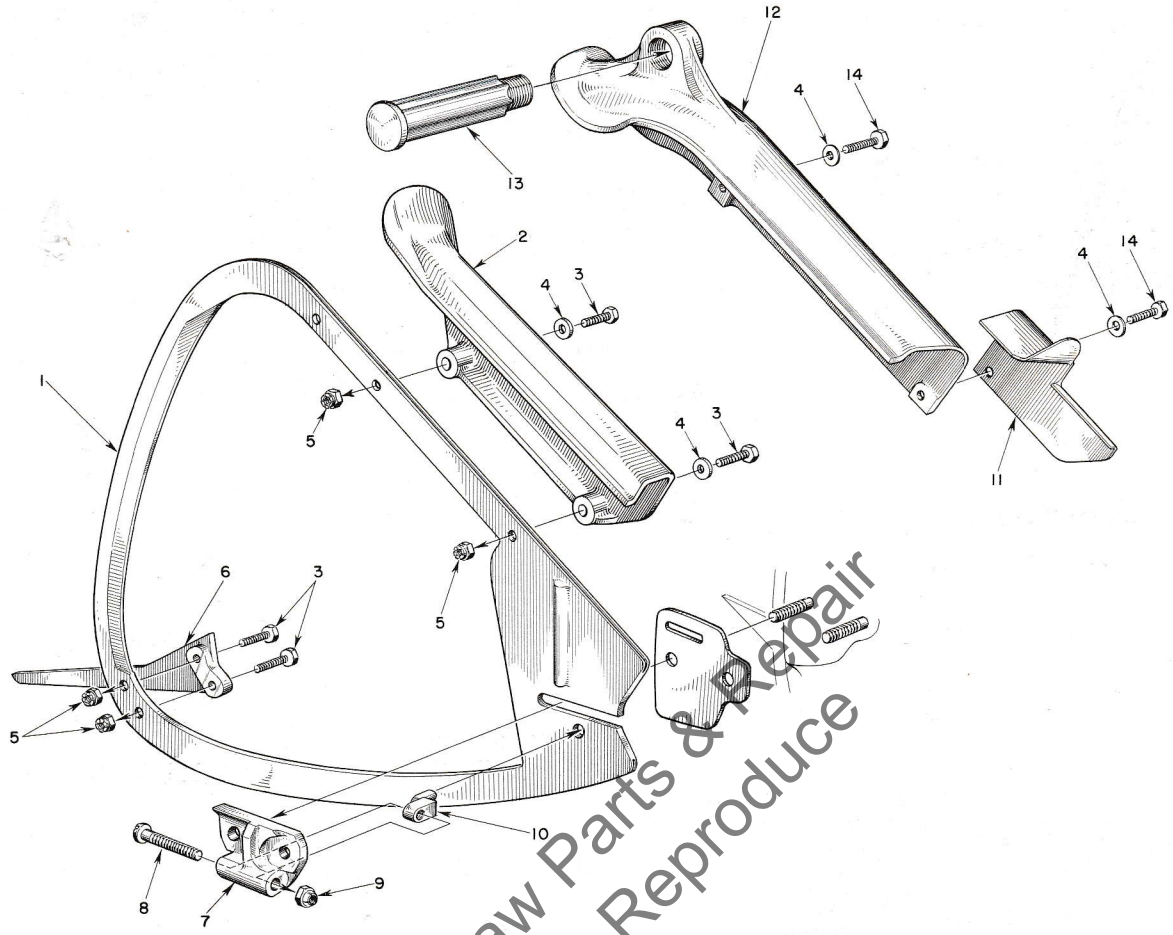


FIGURE 10 — PLUNGE CUT BOW ATTACHMENTS

AUGUST 1957

Index No.	Part No.	Description	No. Required
<i>NOTE: Use left hand column parts list for SHORT GUARD MODEL Bow Attachment.</i>			
1	*55921	14" GUIDE—chain	1
	A-56192	KIT—bow mounting (w/short guard)	1
		Includes	
2	55948	GUARD—short	1
3	80546	SCREW— $\frac{5}{16}$ -24 x $1\frac{1}{4}$ hex	4
4	84001	WASHER— $\frac{5}{16}$ flat	2
5	81112	NUT— $\frac{5}{16}$ -24 hex lock	4
6	72784	SPUR	1
7	A-55591-1	ADJUSTING PLATE (bow)	1
		Includes	
8	80617	SCREW—tension adjusting	1
9	81123	NUT	1
10	55552	PIN	1

Index No.	Part No.	Description	No. Required
<i>NOTE: Use right hand column parts list for LONG GUARD MODEL Attachment with side handle.</i>			
1	*55921	14" GUIDE—chain	1
	A-55955	KIT—bow mounting (w/side handle)	1
		Includes	
3	80546	SCREW— $\frac{5}{16}$ -24 x $1\frac{1}{4}$ hex head	2
4	84001	WASHER— $\frac{5}{16}$ flat	2
5	81112	NUT— $\frac{5}{16}$ -24 hex lock	4
6	72784	SPUR	1
7	A-55591-1	ADJUSTING PLATE (bow)	1
		Includes	
8	80617	SCREW—tension adjusting	1
9	81123	NUT	1
10	55552	PIN	1
11	55297	GUARD	1
12	72779	GUARD (for side handle)	1
13	72226	HANDLE—side	1
14	80559	SCREW— $\frac{5}{16}$ -24 x $1\frac{1}{2}$ hex head	2

*Use 23" chain

**You'll
SPEED WORK
and make
MORE MONEY
with...**



HOMELITE
SELF-PRIMING PUMPS



HOMELITE
DEPENDABLE GENERATORS



HOMELITE
POWERFUL ONE-MAN CHAIN SAWS



HOMELITE
ONE-MAN CONCRETE VIBRATORS



HOMELITE — BOSCH (Germany)
ELECTRIC BUILDER'S HAMMERS

All Powered By Famous HOMELITE Engines

Homelite's two-cycle gasoline engines are the most efficient and dependable units of their kind ever built. Their two-cycle design, developed to perfection by Homelite engineers over the past 35 years, gives maximum power for the least weight because power is produced at every piston down stroke. As an added advantage, this design requires fewer moving parts which means greater dependability and lower maintenance.