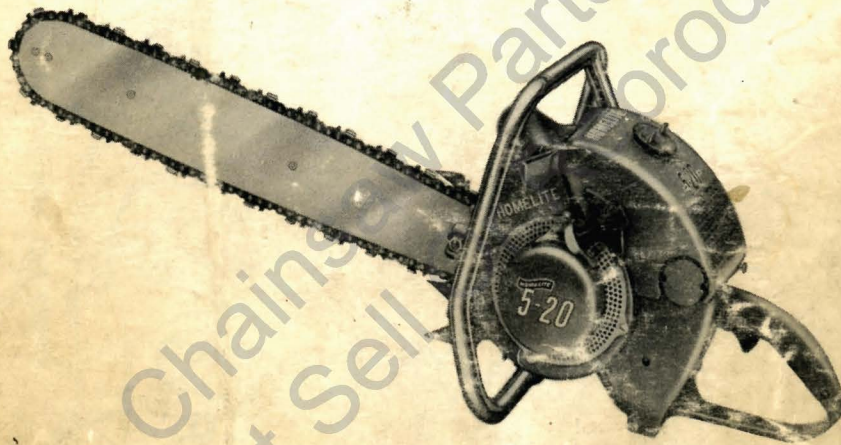


# PARTS LIST

## MODEL 5-20 HOMELITE CHAIN SAW



Gas-line-Engine-Driven

**HOMELITE CORPORATION**  
PORT CHESTER, N.Y.

# RECOIL STARTER PARTS

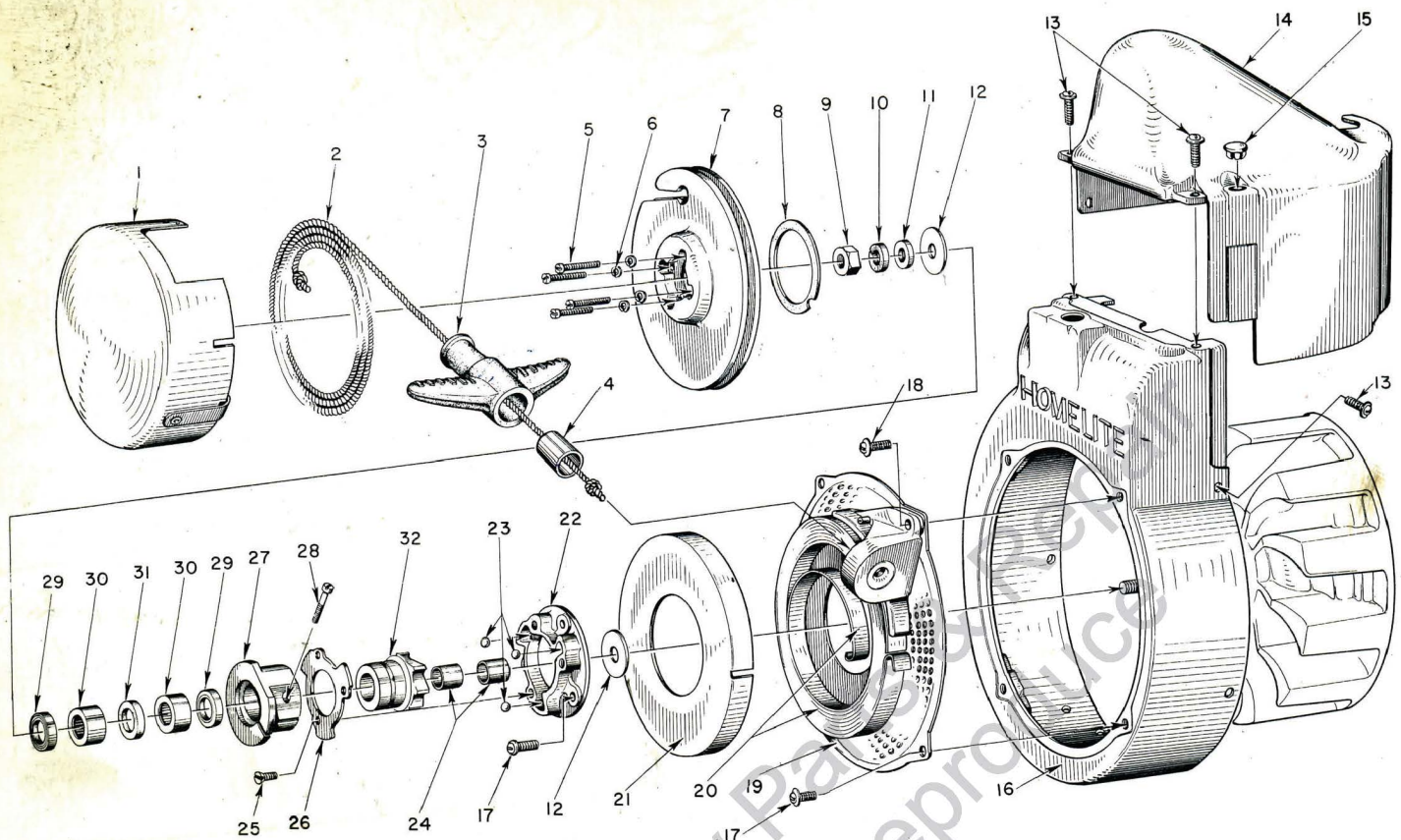


FIGURE 1

2

## HOMELITE CHAIN SAW MODEL 5-20

### PARTS LIST FOR FIGURE 1

Index No.	Part No.	Nomenclature	No. Required	Index No.	Part No.	Nomenclature	No. Required
1	AA-73234-2	COVER—pulley .....	1	*		SCREEN—air .....	1
	55731	DECAL .....	1	85073		RIVET—tubular .....	1
2	55732	ROPE—nylon .....	1	20	71470-A	SPRING—recoil .....	1
3	71149-B	GRIP—starting .....	1	21	71603	COVER—spring housing .....	1
4	55369-A	INSERT .....	1	AA-55211-1		BALL DRIVE .....	1
5	80475	SCREW—6-32 x 3/4 fil. hd. ....	1			Composed of	
6	83004	WASHER—#6 lock .....	4	22	55054-A	PLATE—ball drive .....	1
7	AA-55223-A	PULLEY (with pin) .....	1	23	55217	BALL .....	3
8	71588	SHIM—plastic .....	as req'd.	24	55584	SLEEVE—bearing .....	2
9	81124	NUT—3/8-24 hex jam .....	1	25	80588	SCREW—5-40 x 5/16 flat hd. ....	3
10	83018	WASHER—3/8 lock .....	1	AA-55212-1		RATCHET and HUB .....	1
11	84070	WASHER—3/8 flat alum. ....	1			Composed of	
12	55585	WASHER—thrust .....	2	26	55097	RETAINER .....	1
13	80577	SCREW—8-32 x 3/8 pan hd. ....	7	A-55342		HUB and SCREW .....	1
14	55015-B	SHIELD—cylinder .....	1			Composed of	
15	32814	PLUG—button .....	1	27	*	HUB .....	1
16	AA-55208	SHROUD—air .....	1	28	72295	SCREW—hub .....	1
17	80579	SCREW—10-32 x 3/8 pan hd. ....	6	AA-55213		RATCHET and BEARING .....	1
18	80576	SCREW—10-32 x 1/16 pan hd. ....	1			Composed of	
19	A-55580	SCREEN and BRACKET .....	1	29	55272	SEAL—garlock .....	2
		Composed of		30	55215	BEARING—needle .....	2
AA-55222-A		BRACKET and BUSHING .....	1	31	55214	FELT .....	1
				32	A-55348	RATCHET (includes washer) .....	1
				**55271		WASHER—formica .....	1

\* Not supplied separately.

# IGNITION AND GOVERNOR PARTS

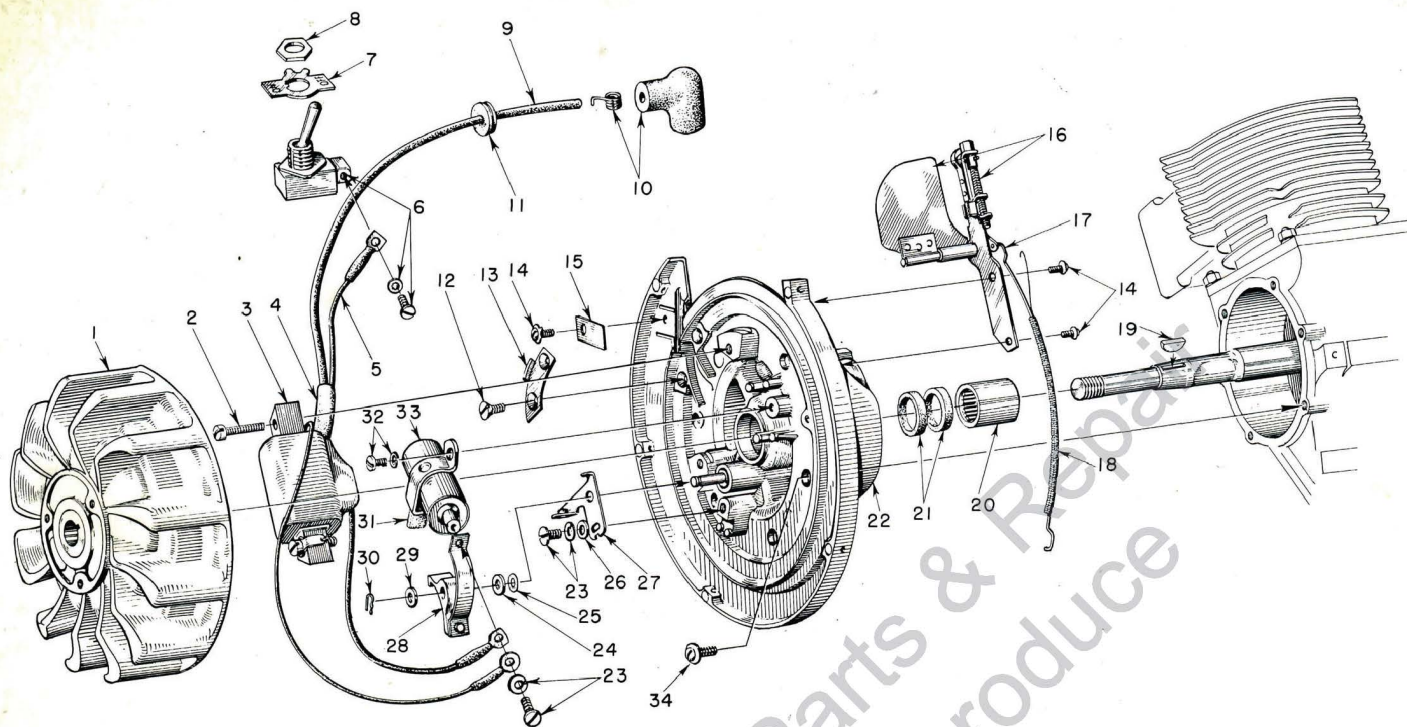


FIGURE 2

## HOMELITE CHAIN SAW MODEL 5-20

### PARTS LIST FOR FIGURE 2

Index No.	Part No.	Nomenclature	No. Required
1	55578	ROTOR	1
2	30270	SCREW	2
	83046	WASHER—lock #10	2
3	55403	COIL	1
4	55409	SLEEVE—insulating	1
5	55408	LEAD—ground	1
	AA-72094	SWITCH—"On-Off"	1
		Composed of	
6	*	SWITCH (with ground screw)	1
7	72085-A	PLATE (on-off)	1
8	72084-A1	NUT	1
9	55407	LEAD—high tension	1
10	A-55373	TERMINAL (sparky)	1
11	60929	GROMMET	1
12	80598	SCREW—6-32 x 5/16 flat hd.	2
13	55381	CLAMP—inner	1
14	80575	SCREW—8-32 x 1/4 pan hd.	3
15	55161	CLAMP—outer	1
16	A-55589	GOVERNOR ASSEMBLY	1
		Includes	
	84066	WASHER—governor arm burr	1
17	55158	GOVERNOR—arm	1

Index No.	Part No.	Nomenclature	No. Required
18	55588	SPRING—governor	1
19	75078	KEY—rotor	1
	A-55406	PLATE—back	1
		Composed of	
20	55204	BEARING—needle	1
21	71597	SEAL—garlock	2
22	*	PLATE	1
23	55411	SCREW—6-32 x 5/16 (with washer)	1
24	55412	WASHER—contact plate	2
25	30268	WASHER—spring	as req.
26	72484	WASHER—fixed contact plate screw	1
		POINTS (set)	1
		Composed of	
27	*	PLATE—fixed contact	1
28	*	BREAKER ARM	1
29	28003	WASHER—breaker arm	1
30	28008	LOCK—spring	1
31	30267	WICK—felt	1
32	30261	SCREW—8-32 x 5/16 (with washer)	1
33	55399	CONDENSER	1
34	80576	SCREW—10-32 x 9/16 pan hd.	6

# FUEL TANK

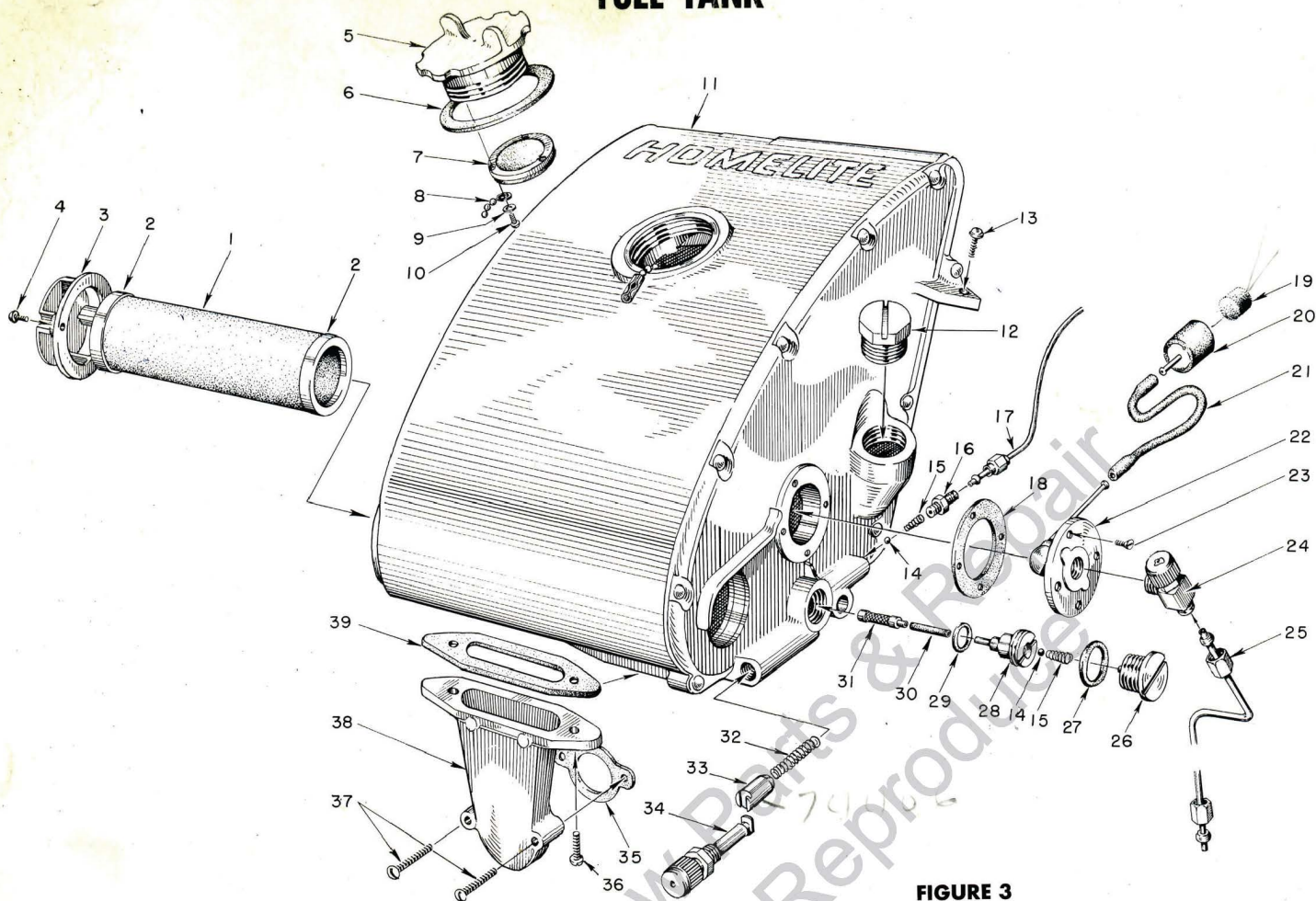


FIGURE 3

## HOMELITE CHAIN SAW MODEL 5-20

### PARTS LIST FOR FIGURE 3

Index No.	Part No.	Nomenclature	No. Required	Index No.	Part No.	Nomenclature	No. Required
	A-55531	FILTER—air .....	1	17	AA-55191	LINE—oil .....	1
		Composed of		18	72174	GASKET—outlet fitting .....	1
1	*	ELEMENT—filter .....	1	19	73872	FILTER—felt .....	1
2	55530	GASKET .....	2	20	72871	BODY—fuel strainer .....	1
3	55066-A	CAP—air filter .....	1	21	72107-A	SLEEVE—flexible .....	1
4	80571	SCREW—6-32 x 7/8 pan hd. ....	2	22	AA-72475	FITTING—fuel outlet .....	1
	A-55305-A	CAP—fuel .....	1	23	80451	SCREW—6-32 x 7/8 flat head .....	3
5	*	CAP .....	1	24	72175	VALVE—shut-off .....	1
6	72173	GASKET .....	1	25	AA-55264	LINE—fuel .....	1
7	A-55301-A	VALVE—relief .....	1	26	AA-55167	CAP—oil supply line .....	1
8	*	CHAIN—bead .....	1	27	55107	GASKET .....	1
9	83083	WASHER—lock .....	3	28	AA-55289	SEAT—check valve .....	1
10	80592	SCREW—3-48 x 1/4 rd. hd. ....	3	29	55110	GASKET .....	1
11	A-55567	FUEL TANK .....	1	30	55133-A	SLEEVE—flexible .....	1
		Composed of		31	AA-55259	PICK-UP—oil .....	1
	*	TANK .....	1	32	71762	SPRING—plunger .....	1
	55729	DECAL—starting instructions .....	1	33	71763	TUBE—plunger .....	1
	55249	DECAL—Homelite .....	1	34	71764	PLUNGER—button .....	1
12	55140-A	CAP—oil .....	1	35	72971	GASKET—air elbow .....	1
13	80582	SCREW—8-32 x 5/8 spin-lock .....	1	36	80572	SCREW—10-32 x 5/8 spin-lock .....	2
14	25527	BALL—check .....	2	37	80584	SCREW—8-32 x 1 spin-lock .....	2
15	55288-A	SPRING—valve .....	2	38	55019-C	ADAPTER—air filter .....	1
16	31733-1	ADAPTER—straight .....	1	39	55059	GASKET—adapter .....	1

# PISTOL GRIP AND THROTTLE PARTS

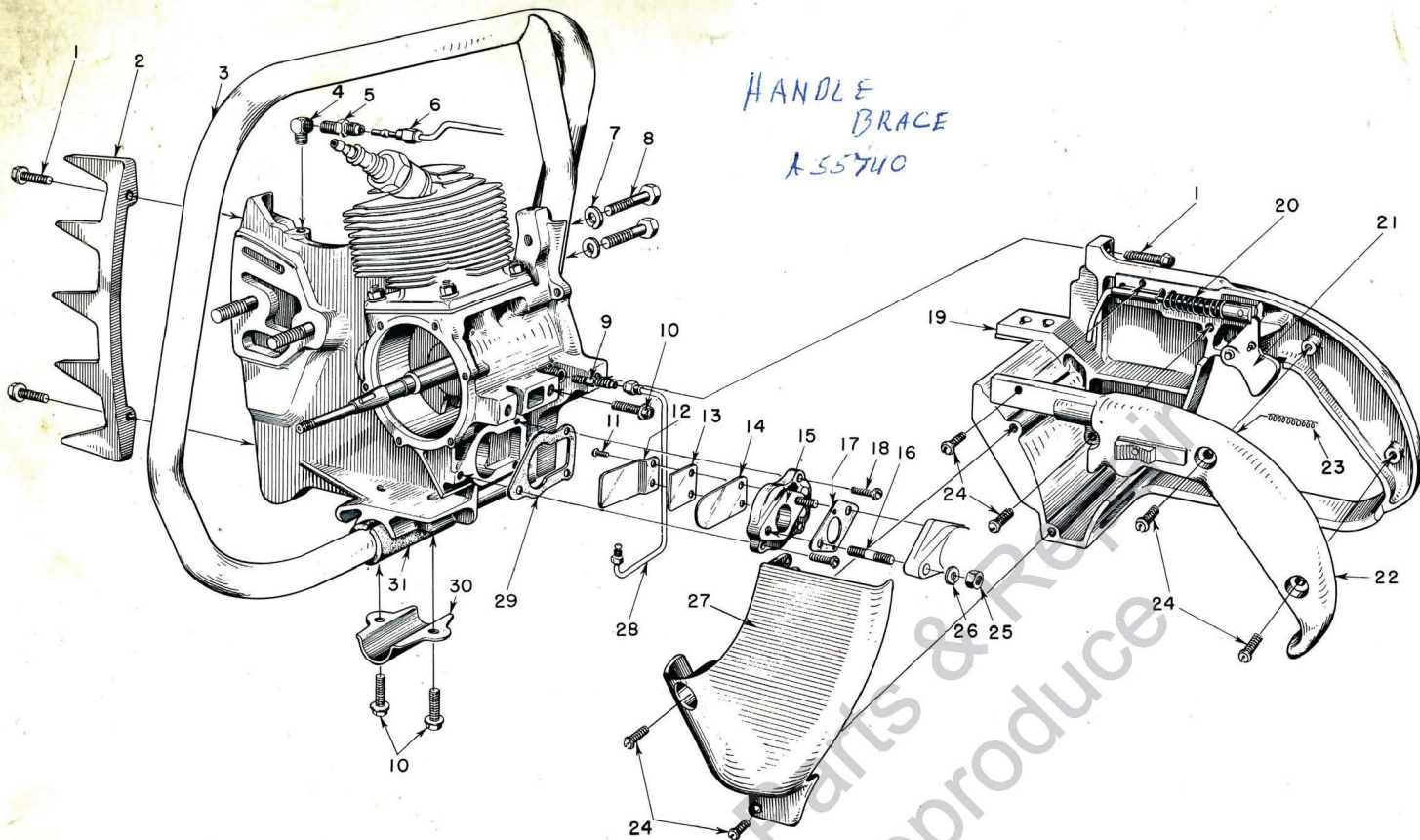


FIGURE 4

8

## HOMELITE CHAIN SAW MODEL 5-20

### PARTS LIST FOR FIGURE 4

Index No.	Part No.	Nomenclature	No. Required
1	80573	SCREW— $\frac{1}{4}$ -20 x $\frac{13}{16}$ hex hd., spin-lock	5
2	55103	PLATE—bumper	1
3	A-55518	HANDLE—wrap-around (5-22)	1
	A-55119	HANDLE—flush-cut (5-22A)	1
4	31734	ELBOW—connector	1
5	31733-1	ADAPTER—straight	1
6	AA-55191	LINE—chain oil	1
7	83003	WASHER— $\frac{5}{16}$ lock	2
8	80087	SCREW— $\frac{5}{16}$ -18 x $1\frac{1}{2}$ hex hd.	2
9	55267	ADAPTER—straight	1
10	80581	SCREW— $\frac{1}{4}$ -20 x $\frac{5}{8}$ hex hd., spin-lock	4
	A-55526	VALVE—reed	1
		Composed of	
11	80605	SCREW— $\frac{6}{32}$ x $\frac{5}{16}$ pan hd.	2
12	55525	CLAMP—reed limit	1
13	55078-A	SPRING—reed	1
14	55524	REED	1
15	55071-2	ADAPTER—reed valve	1
16	27464	STUD	2
17	73460-A	GASKET—carburetor	1
18	80583	SCREW— $\frac{10}{32}$ x $\frac{3}{4}$ pan hd.	3

Index No.	Part No.	Nomenclature	No. Required
19	AA-55281	GRIP—pistol	1
20	AA-55165	ROD—throttle	1
		Composed of	
	*	ROD	1
	55045	SPRING	1
21	AA-55207	TRIGGER	1
	AA-55228	COVER—grip	1
		Composed of	
22	*	COVER	1
	AA-55282	LOCK—throttle	1
		Composed of	
	*	BUTTON—lock	1
	*	LOCK	1
23	72970	SPRING—lock	1
24	80560	SCREW— $\frac{8}{32}$ x $\frac{1}{2}$ pan hd.	7
25	81013	NUT— $\frac{1}{4}$ -20 hex	2
26	83009	WASHER— $\frac{1}{4}$ lock	2
27	55104	SHIELD—carburetor	1
28	AA-55266	LINE—pump activator	1
29	55116	GASKET—reed valve adapter	1
30	55145	CLAMP—handle	1
31	55146	CUSHION—handle	1

# CARBURETOR PARTS

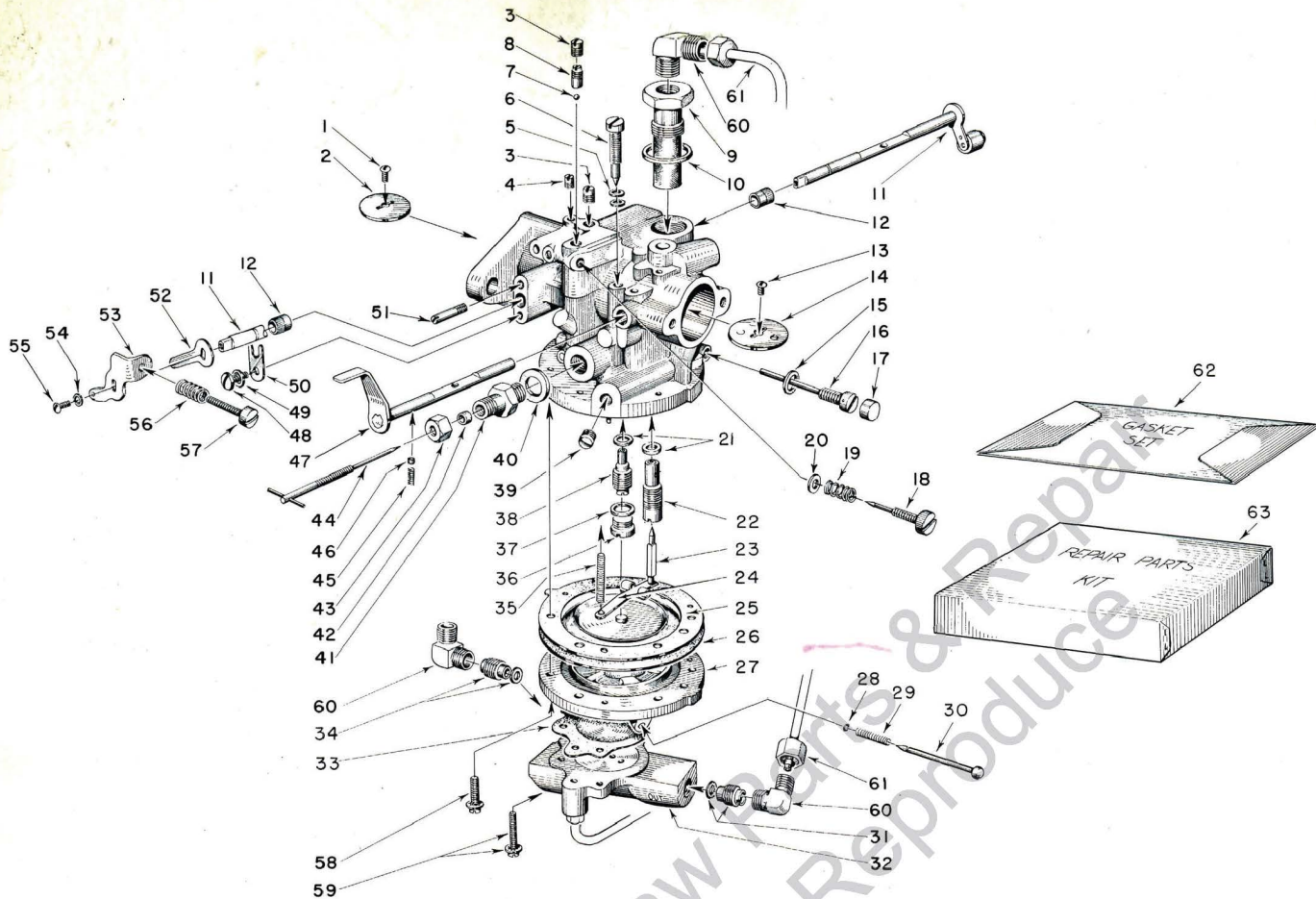


FIGURE 5

## HOMELITE CHAIN SAW MODEL 5-20

### PARTS LIST FOR FIGURE 5

Index No.	Part No.	Nomenclature	No. Required	Index No.	Part No.	Nomenclature	No. Required
	A-55582	CARBURETOR .....	1	30	55325	PLUNGER .....	1
		Composed of		31	**55315	VALVE—"out" (with gasket) .....	1
	A-55612	BODY—service .....	1	32	55312	BODY—pump .....	1
1	71519	SCREW—shutter .....	1	33	**55313	DIAPHRAGM—fuel pump .....	1
2	73272	SHUTTER—throttle .....	1	34	**55314	VALVE—"in" (with gasket) .....	1
3	73068	SCREW—plug .....	2			GASKET—pump check valve .....	2
4	28091	SCREW—plug .....	1	35	**73082	SPRING—inlet control lever .....	1
	**AA-73615	SCREW—control .....	1	36	73085	SCREW—nozzle channel plug .....	1
		Composed of		37	73425	GASKET—Channel plug screw .....	1
5	73616	GASKET—copper .....	2	38	**55310	NOZZLE—main .....	1
6	*	SCREW .....	1			GASKET—(same as index No. 21) .....	1
7	**60051	BALL—idle check valve .....	1	39	71516	SCREW—plug (drain) .....	1
8	**73251	SEAT—idle check valve .....	1		AA-73269	SCREW—main adjustment .....	1
9	55306	CONNECTION—inlet .....	1			Composed of	
10	73266	GASKET—connection .....	1	40	28055	GASKET—gland .....	1
11	55307	SHAFT—throttle .....	1	41	28057	GLAND .....	1
12	72812	BUSHING—shaft .....	2	42	15037	PACKING .....	1
13	28049	SCREW—choke shutter .....	1	43	28058	NUT .....	1
14	73263	SHUTTER—choke .....	1	44	**73083	SCREW—main adjustment .....	1
15	73268	GASKET—pinion screw .....	1	45	73264	SPRING—choke friction .....	1
16	**73080	SCREW—pinion .....	1	46	71494	PIN—choke friction .....	1
17	73267	CAP—pinion screw .....	1	47	55317	SHAFT—choke .....	1
18	**73074	SCREW—idle mixture .....	1	48	73088	SCREW—throttle shaft clip .....	1
19	**73075	SPRING—idle screw .....	1	49	83000	WASHER—lock #8 .....	1
20	28130	WASHER .....	1	50	73086	CLIP—throttle shaft .....	1
	73078	NEEDLE and SEAT—inlet .....	1	51	55309	PIN—throttle stop .....	1
		Composed of		52	55172	SPRING—governor arm retaining .....	1
21	74060	GASKET .....	1	53	55171	LEVER—throttle stop .....	1
22	*	SEAT—inlet .....	1	54	**83008	WASHER—lock #4 .....	1
23	*	NEEDLE—inlet .....	1	55	80006	SCREW—stop lever retaining .....	1
24	**73079	LEVER—control .....	1	56	**28064	SPRING—idle stop screw .....	1
25	73071	GASKET—cover .....	1	57	**71509	SCREW—idle stop (speed control) .....	1
26	**73070	DIAPHRAGM—main .....	1	58	73072	SCREW—(with lockwasher) .....	6
	A-55322	COVER—diaphragm .....	1	59	**55316	SCREW—(with lockwasher) .....	2
		Composed of		60	S-740-1	ELBOW—connector .....	3
27	*	COVER .....	1	61	AA-55262	LINE—carburetor supply .....	1

# GEAR CASE AND SPROCKET PARTS

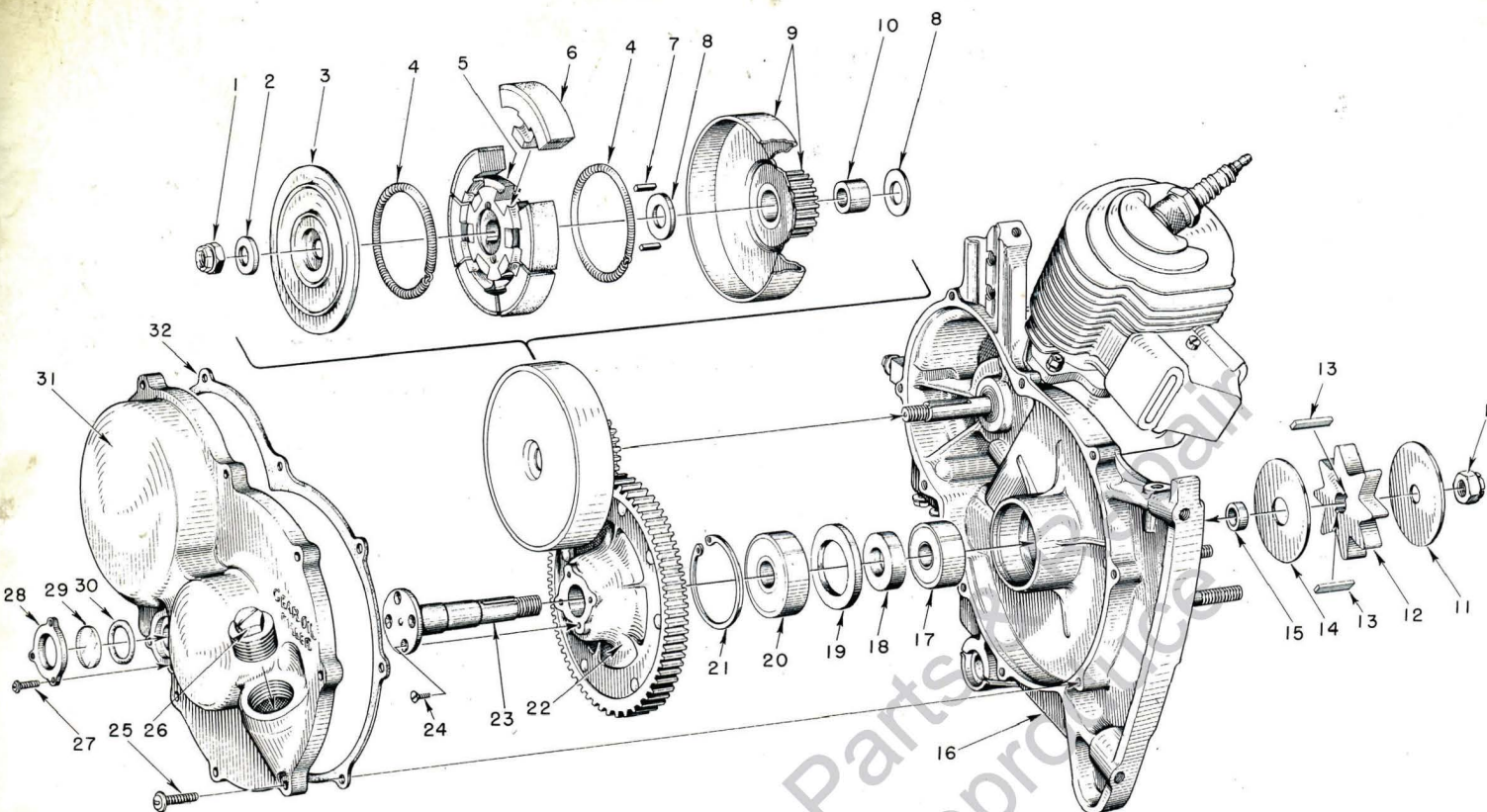


FIGURE 6

12

## HOMELITE CHAIN SAW MODEL 5-20

### PARTS LIST FOR FIGURE 6

Index No.	Part No.	Nomenclature	No. Required
1	81116	NUT— $\frac{3}{8}$ -24 flex-lock	2
2	55036	WASHER—clutch	1
3	55126	COVER—clutch	1
	A-55693	CLUTCH	1
		Composed of	
4	55123	SPRING	2
5	55075	SPIDER	1
6	A-55692	SHOE	6
7	55225	KEY—clutch	2
8	55034	WASHER—thrust	2
9	AA-55086	CLUTCH DRUM (and drive gear)	1
10	55035	BEARING—drive gear	1
11	55602	WASHER—sprocket (outer)	1
12	††55593	SPROCKET	1
13	55482-1	KEY—sprocket	2
14	55601	WASHER—sprocket (inner)	1
15	55586	SPACER—sprocket	1
16	**	CRANKCASE	1
17	55184	BEARING—ball	1

Index No.	Part No.	Nomenclature	No. Required
18	55024	SPACER—bearing	1
19	55025	SHOULDER—bearing	1
20	72040	BEARING—ball	1
21	28922	RING—retaining	1
22	AA-55068-B	DRIVEN GEAR	1
23	55005-C	SHAFT—sprocket	1
24	80620	SCREW—12-28 x $\frac{3}{8}$ flat hd.	4
25	80572	SCREW—10-32 x $\frac{5}{8}$ pan hd.	9
	AA-55226-1	COVER—gear case	1
		Composed of	
	55730	DECAL	1
26	55140-A	PLUG—oil filler	1
27	80571	SCREW—6-32 x $\frac{3}{8}$ pan hd.	3
28	55098	PLATE—window	1
29	55099	WINDOW—plastic	1
30	55100	GASKET—"O" ring	1
31	*	COVER	1
32	55053-A	GASKET—gearcase cover	1

\* Not Supplied Separately

\*\* A-55598—for breakdown see figure 7 Engine Parts

†† 6-tooth 55101-A Sprocket must be used for Clearing Attachment and for Bow Attachment in place of 8-tooth Sprocket used for straight blade operation.

# ENGINE ASSEMBLY

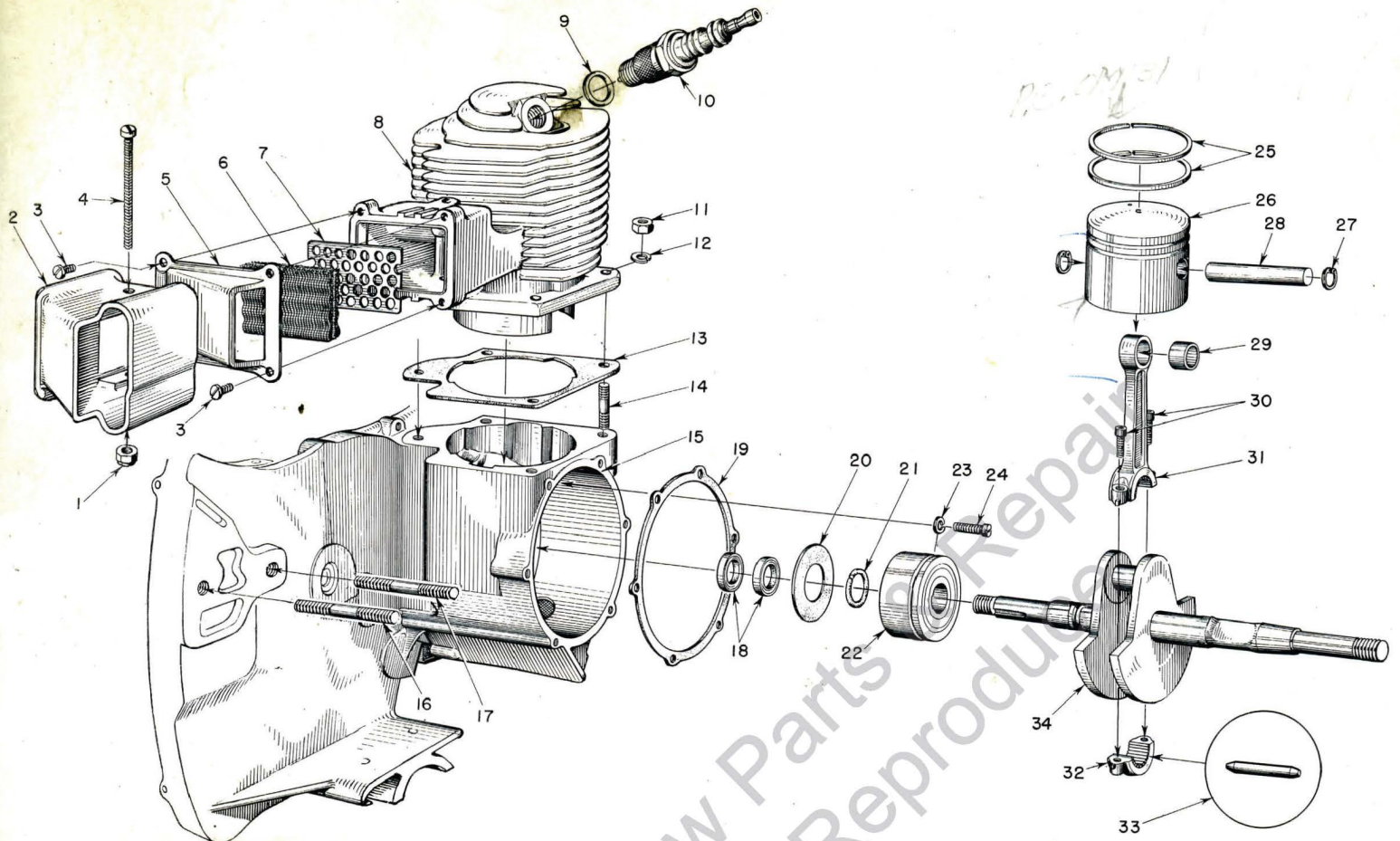


FIGURE 7

14

## HOMELITE CHAIN SAW MODEL 5-20

### PARTS LIST FOR FIGURE 7

Index No.	Part No.	Nomenclature	No. Required
1	81109	NUT—10-32 flex-lock	1
2	55506	DAMPER	1
3	80571	SCREW—6-32 x 3/8 pan hd.	4
4	80618	SCREW—10-32 x 2 1/4 rd. hd.	1
5	55507	CAP—exhaust	1
6	55508	ELEMENT—muffler	1
7	55509	RETAINER—muffler element	1
8	55490	CYLINDER	1
9	25038	GASKET (included with spark plug)	1
10	71530	SPARK PLUG—Champion HO-8A	1
11	81065	NUT—1/4-28 hex	4
12	83009	WASHER—1/4 lock	4
13	55050-A	GASKET—cylinder	1
	A-55598	CRANKCASE	1
		Composed of	
14	71304	STUD	4
15	*	CRANKCASE and GEARCASE	1
16	55606	STUD—guide bar (long)	1
17	55056-D	STUD—guide bar (short)	1
18	71597	SEAL—garlock	2
19	55049	GASKET—back plate	1

Index No.	Part No.	Nomenclature	No. Required
20	55048	GASKET—crankcase sealing	1
21	55047	RING—bearing retaining	1
22	55193	BEARING—main	1
23	83061	WASHER—lock, special thin	2
24	19238-A	SCREW—main bearing retaining	2
25	55537	RING—piston	2
26	A-55599	PISTON and PIN	1
		Composed of	
	*	PISTON	1
27	55095	RING—piston pin retaining	2
28	*	PIN—piston	1
	AA-55195	CONNECTING ROD	1
		Composed of	
29	55196	BEARING—piston pin	1
30	80541	SCREW—8-32 x 1/2 allen cap	2
31	*	ROD	1
32	*	CAP	1
33	AA-55280	ROLLERS (set)	1
		Composed of	
	72256	ROLLER—needle (see inset)	27
34	55514-A	CRANKSHAFT	1

\* Not Supplied Separately



# SAW PARTS

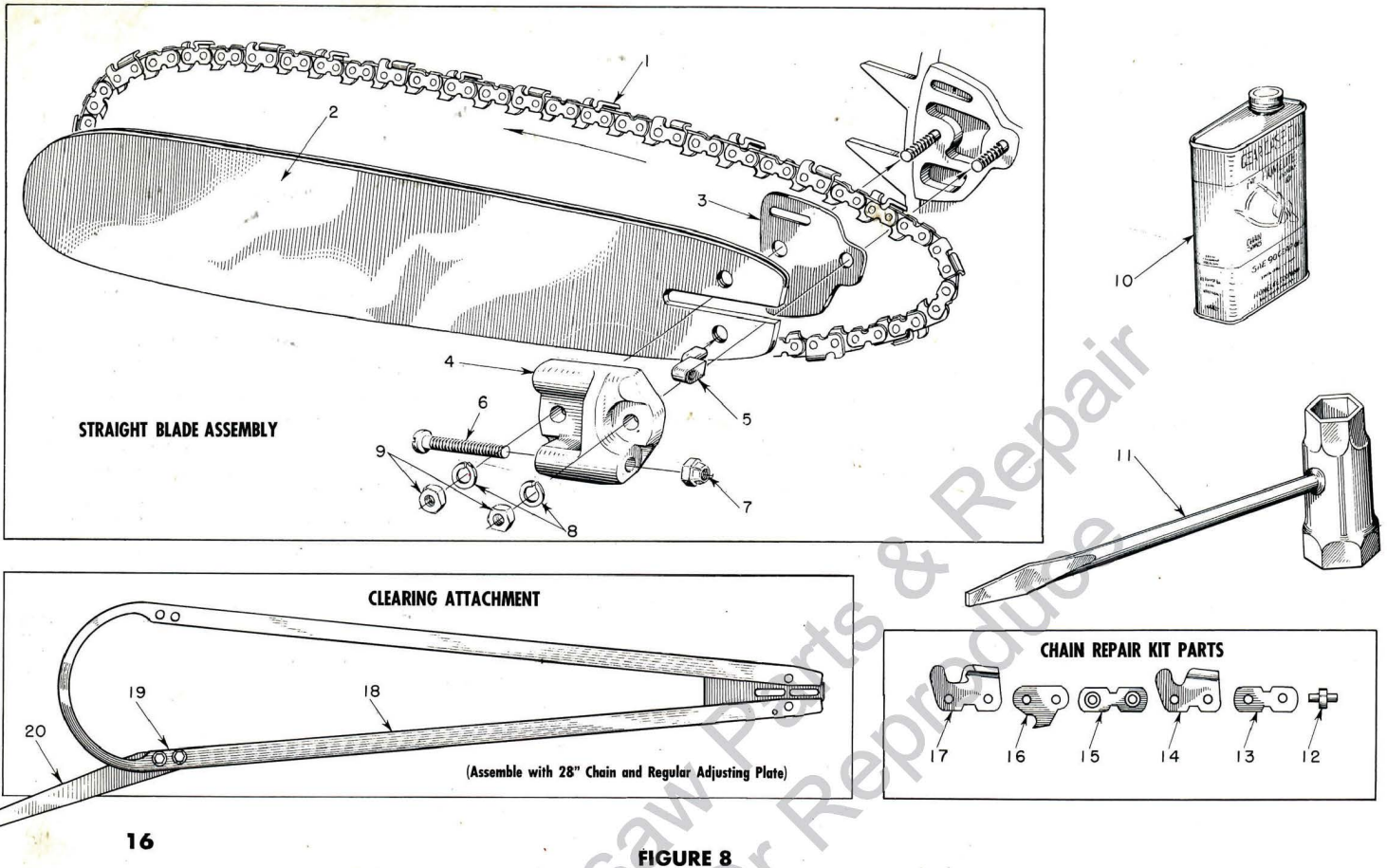


FIGURE 8

## HOMELITE CHAIN SAW MODEL 5-20

### PARTS LIST FOR FIGURE 8

Index No.	Part No.	Nomenclature	No. Required
1	A-55338	14" CHAIN—#10 with kit	1
	AA-73338	18" CHAIN—#10 with kit	1
	A-55319	20" CHAIN—#10 with kit	1
	*AA-73340	23" CHAIN—#10 with kit	1
	**AA-73342	28" CHAIN—#10 with kit	1
	AA-73344	33" CHAIN—#10 with kit	1
	AA-73346	38" CHAIN—#10 with kit	1
2	A-55714	14" BAR—.063	1
	A-55718	18" BAR—hard track plus extra hard tip .063	1
	A-55720	20" BAR—hard track plus extra hard tip .063	1
	A-55723	23" BAR—hard track plus extra hard tip .063	1
	A-55728	28" BAR—hard track plus extra hard tip .063	1
	55704-1	33" BAR—extra hard tip .063	1
	55705-1	38" BAR—extra hard tip .063	1
3	55128	SHIM	1
	A-55591	ADJUSTING PLATE	1
		Composed of	
4	55551-A	PLATE—adjusting	1
5	55552	PIN—guide bar adjusting	1

Index No.	Part No.	Nomenclature	No. Required
6	80617	SCREW—5/16-18 x 2 round hd.	1
7	81123	NUT—hex lock	1
8	83018	WASHER—lock	2
9	81089	NUT—3/8-16 hex	2
10	55291-A	OIL—gear (pint can SAE-90)	1
11	22808	WRENCH—combination	2
	AA-73314	KIT—chain repair	1
		Composed of	
12	72959	RIVET	4
13	72960	LINK—connecting (plain)	2
14	72963	CUTTER—right	1
15	AA-72961	LINK—connecting (w/rivets)	2
16	73383	LINK—drive	1
17	72964	CUTTER—left	1
	A-55379	CLEARING ATTACHMENT	1
		Composed of	
18	A-55435	GUIDE—clearing	1
19	80604	SCREW—hex hd. 5/16-24 x 3/4	2
20	73820	SPUR—plunging	1

\*Also fits 14" bow attachment

\*\*Also fits clearing attachment and 18" bow attachment

# PLUNGE CUT BOW ATTACHMENTS

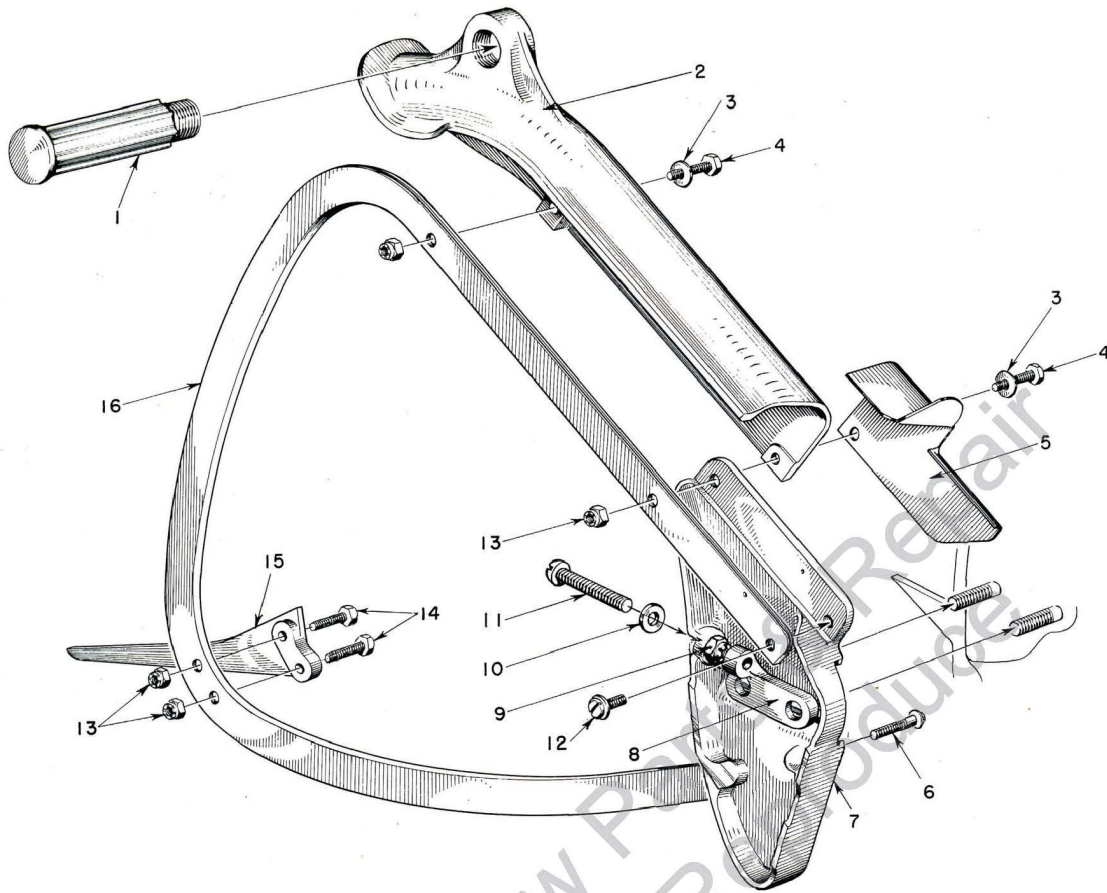


FIGURE 9

18

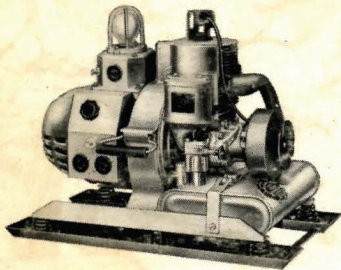
## HOMELITE CHAIN SAW MODEL 5-20

### PARTS LIST FOR FIGURE 9

Index No.	Part No.	Nomenclature	No. Required
	A-55299	14" ATTACHMENT (with hard track guide) .....	1
	A-55364	14" ATTACHMENT (with extra hard track guide) .....	1
	A-55298	18" ATTACHMENT (with hard track guide) .....	1
	A-55365	18" ATTACHMENT (with extra hard track guide) .....	1
		Composed of	
1	72226	HANDLE .....	1
2	72779-1	GUARD—chain .....	1
3	84001	WASHER—5/16 flat .....	2
4	80559	SCREW—5/16-24 x 1 1/2 hex hd. ....	2
5	55297	GUARD—chain .....	1
6	80593	SCREW—5/16-18 x 3/4 pan hd. ....	2
	A-55488	PLATE—bow mounting .....	1
		Composed of	
7	55248	PLATE—mounting .....	1
8	55253	PLATE—adjusting .....	1

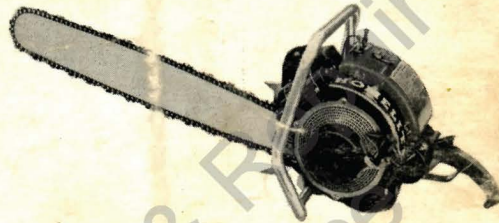
Index No.	Part No.	Nomenclature	No. Required
9	81123	NUT—hex lock .....	1
10	84056	WASHER—5/16 flat .....	1
11	80617	SCREW—5/16-18 x 2 rd. hd. ....	1
12	80590	SCREW—5/16-18 x 1/2 pan hd. ....	1
13	81112	NUT—5/16-24 hex lock .....	4
14	80546	SCREW—5/16-24 x 1 1/4 .....	2
15	72784	SPUR—plunging .....	1
16	A-73690	14" GUIDE—chain (hard track) .....	1
	A-73739	14" GUIDE—chain (extra hard track) .....	1
	A-73689	18" GUIDE—chain (hard track) .....	1
	A-73740	18" GUIDE—chain (extra hard track) .....	1
	AA-73235	HELPER'S END (18" bow only) .....	1
		Composed of	
	72827	GUARD—end .....	1
	72226	HANDLE (same as index #1) .....	1

# HOMELITE *Carryable* PRODUCTS



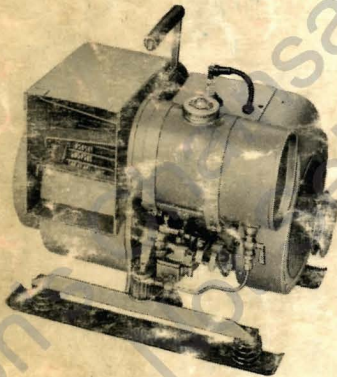
## GENERATORS

Alternating or Direct Current  
Gasoline-Engine-Driven  
Sizes: 1000 to 5000 watts  
Voltages: 6 to 220 volts  
Frequencies: 50 to 400 cycles



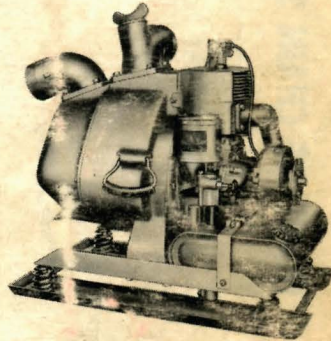
## CHAIN SAWS

Gasoline-Engine-Driven  
3 1/2 HP to 5 1/2 HP  
Straight Blade and Bows



## BLOWERS

Smokejectors Ventilators  
Gasoline-Engine-Driven  
Capacities: 1500 CFM



## PUMPS

Self-Priming Centrifugal  
Gasoline-Engine-Driven  
Sizes: 1 1/2", 2", 3"  
Capacities: 5,500 to 15,000 gph

HOMELITE CORPORATION • PORT CHESTER, N.Y., U.S.A.  
Printed in U.S.A.

PART NO. 23067

20M- 8 -55

A TRUSPECTIVE Publication by  
The PURNELL COMPANY  
Boston, Mass.