

HOMELITE
JACOBSEN

SOLO
Made in
Germany

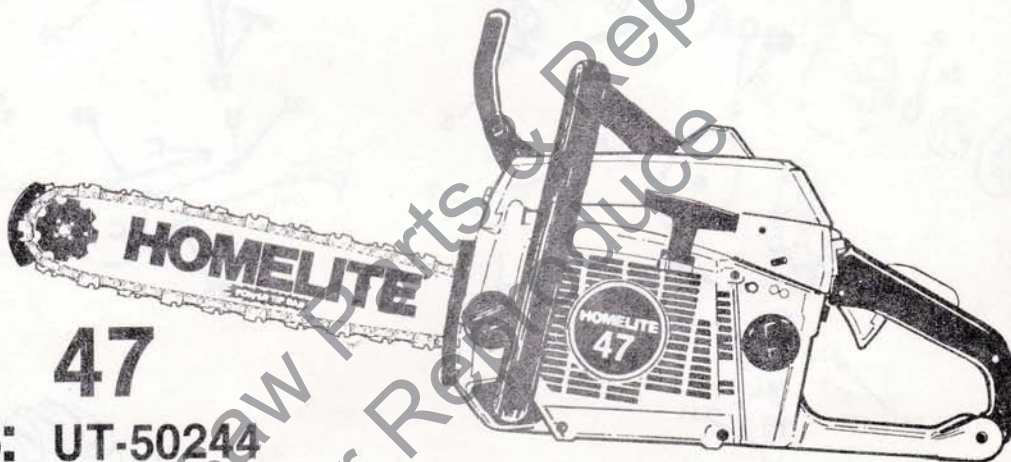
PART NO. 17867-1
N° DE PIÈCE

Price .35¢
Prix

PARTS LIST - CHAIN SAW

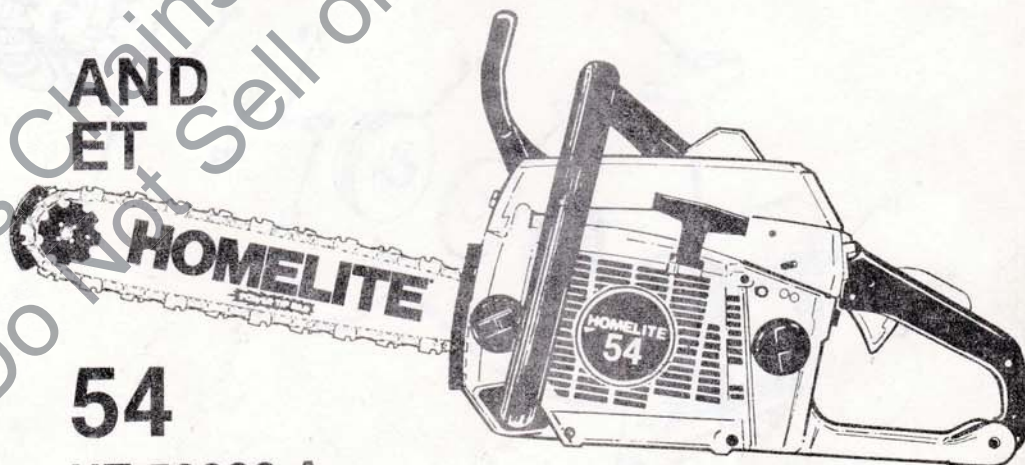
LISTE DE PIÈCES - SCIE À CHAÎNE

MODELS: 47
MODÈLES: UT-50244



AND
ET

54
UT-50233-A



HOMELITE-TERRY
TEXTRON

P.O. Box/C.P. 1800, Pointe-Claire, Québec H9R 4R6

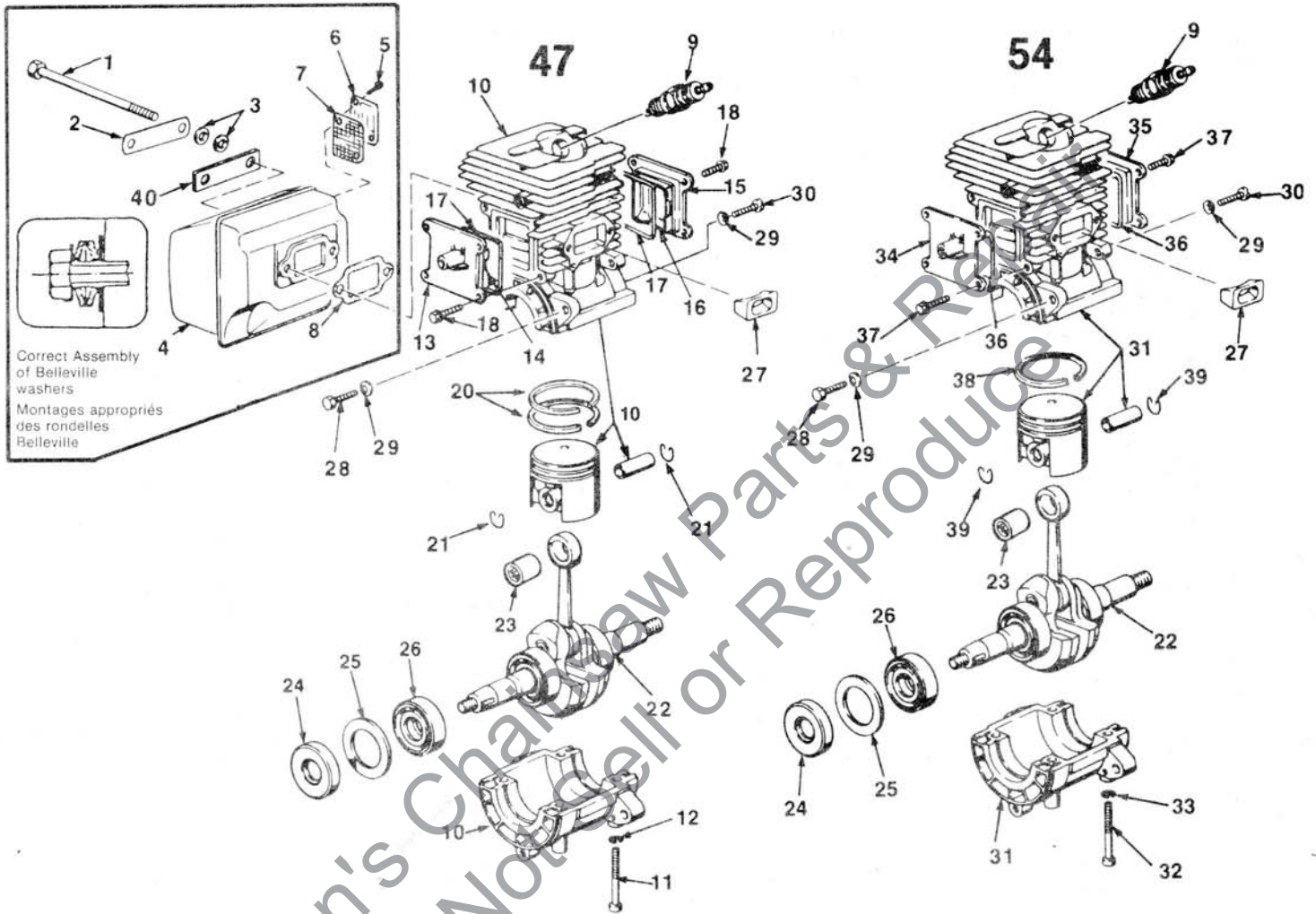
| NO. | DESCRIPTION | PART NO. | 47 | 54 | Qty. | N° | DESCRIPTION | N° DE PIÈCE | 47 | 54 | Qté |
|-----|--|--------------------|----|----|--------|----|--|--------------------|----|----|--------|
| 1 | ACTIVATOR | 98474 | x | x | 1 | 1 | ACTIVATEUR | 98474 | x | x | 1 |
| 2 | NEEDLE BEARING KIT includes felt washer | A-98482-1 98287 | x | x | 1 2 | 2 | TROUSSE - Roulement à aiguille inclut rondelle-feutre | A-98482-1 98287 | x | x | 1 2 |
| 3 | HUB & DRUM | 79453 | x | x | 1 | 3 | TAMBOUR & MOYEU | 79453 | x | x | 1 |
| 3A | RIM SPROCKET .325P 7T | 79454 | x | | 1 | 3A | PIGNON À JANTE ,325P7T | 79454 | x | | 1 |
| | RIM SPROCKET 3/8 7T | 79462 | | x | 1 | | PIGNON À JANTE 3/8 7T | 79462 | | x | 1 |
| 4 | CLUTCH ASSEMBLY Includes: | A-98288 | x | x | 1 | 4 | ENS. D'EMBAYAGE Inclut: | A-98288 | x | x | 1 |
| 5 | SPRING - Clutch | 98453 | x | x | 1 | 5 | RESSORT - Embrayage | 98453 | x | x | 1 |
| 6 | SHOE - Clutch | 98292 | x | x | 3 | 6 | SABOT | 98292 | x | x | 3 |
| 7 | KIT - Pump repair | A-98484 | x | x | 1 | 7 | TROUSSE DE RÉPARATION Pompe | A-98484 | x | x | 1 |
| 8 | GEAR & HUB ASSEMBLY | A-98263 | x | x | 1 | 8 | ENS. ENGRENAGE & MOYEU | A-98263 | x | x | 1 |
| 9 | SCREW - (4.2 x 32) | 88138 | x | x | 3 | 9 | VIS (4,2 x 32) | 88138 | x | x | 3 |
| 10 | OIL PUMP ASSEMBLY | A-98244 | x | x | 1 | 10 | ENS. POMPE À HUILE | A-98244 | x | x | 1 |
| 11 | REGULATOR REPAIR KIT Includes: | A-98483 | x | x | 1 | 11 | TROUSSE DE RÉPARATION - Régulateur inclut: | A-98483 | x | x | 1 |
| 12 | PLATE - Support | 98266 | x | x | 1 | 12 | PLAQUE DE SUPPORT | 98266 | x | x | 1 |
| 13 | DECAL (47) | 79463 | x | | 1 | 13 | DECALQUE (47) | 79463 | x | | 1 |
| | DECAL (54) | 79373 | | x | 1 | | DECALQUE (54) | 79373 | | x | 1 |
| 14 | SCREW (5 x 20) | 88142 | x | x | 4 | 14 | VIS (5 x 20) | 88142 | x | x | 4 |
| 15 | HOUSING - Starter | 98321 | x | x | 1 | 15 | BATI - Démarreur | 98321 | x | x | 1 |
| 16 | GRIP - Starter | 98331 | x | x | 1 | 16 | TIRETTE - Corde | 98331 | x | x | 1 |
| 17 | SPRING & CONTAINER | A-98326 | x | x | 1 | 17 | TIRETTE - Démarreur | A-98326 | x | x | 1 |
| 18 | PULLEY - Starter | 98329 | x | x | 1 | 18 | POULIE - Démarreur | 98329 | x | x | 1 |
| 19 | WASHER | 98423 | x | x | 1 | 19 | RONDELLE | 98423 | x | x | 1 |
| 20 | STARTER ROPE | 98330 | x | x | 1 | 20 | CORDE DU DÉMARREUR | 98330 | x | x | 1 |
| 21 | STARTER PAWL | 98332 | x | x | 1 | 21 | CLIQUET DU DÉMARREUR | 98332 | x | x | 1 |
| 22 | CLIP - Retaining | 98334 | x | x | 1 | 22 | ATTACHE | 98334 | x | x | 1 |
| 23 | WASHER - Flat | 83207 | x | x | 1 | 23 | RONDELLE PLATE | 83207 | x | x | 1 |
| 24 | KEY - Woodruff | 98318 | x | x | 1 | 24 | CLAVETTE Woodruff | 98318 | x | x | 1 |
| 25 | ROTOR | A-98310 | x | x | 1 | 25 | ROTOR | A-98310 | x | x | 1 |
| 26 | WIRE - Ground | A-98373 | x | x | 1 | 26 | FIL DE LA MASSE | A-98373 | x | x | 1 |
| 27 | CABLE - Insulated | A-98372 | x | x | 1 | 27 | CÂBLE ISOLÉ | A-98372 | x | x | 1 |
| 28 | CABLE - Insulated | A-98374 | x | x | 1 | 28 | CÂBLE ISOLÉ | A-98374 | x | x | 1 |
| 29 | SCREW (5 x 20) | 88145 | x | x | 1 | 29 | VIS (5 x 20) | 88145 | x | x | 1 |
| 30 | MODULE & CORE | 98365 | x | x | 1 | 30 | MODULE & MANDRIN | 98365 | x | x | 1 |
| 31 | SCREW (5 x 30) | 88144 | x | x | 1 | 31 | VIS (5 x 30) | 88144 | x | x | 1 |
| 32 | SPACER | 98367 | x | x | 1 | 32 | CALE | 98367 | x | x | 1 |
| 33 | TERMINAL - Spark plug | A-98369 | x | x | 1 | 33 | BORNE - Bougie | A-98369 | x | x | 1 |
| 34 | TUBING - Silicon 3-1/2" | 98376 | x | x | 1 | 34 | TUBE ISOLANT 3-1/2" | 98376 | x | x | 1 |
| 35 | COIL - Ignition | 98366 | x | x | 1 | 35 | BOBINE - Allumage | 98366 | x | x | 1 |
| 36 | NUT | 81403 | x | x | 1 | 36 | ÉCROU | 81403 | x | x | 1 |
| 37 | SCREW (3.9 x 13) | 98375 | x | x | 1 | 37 | VIS (3,9 x 13) | 98375 | x | x | 1 |
| 38 | SCREW (4 x 14) | 88146 | x | x | 1 | 38 | VIS (4 x 14) | 88146 | x | x | 1 |
| 39 | SWITCH (on/off) | 98377 | x | x | 1 | 39 | INTERRUPTEUR (marche/arrêt) | 98377 | x | x | 1 |
| 40 | SCREW (3.5 x 13) | 88148 | x | x | 2 | 40 | VIS (3,5 x 13) | 88148 | x | x | 2 |
| 41 | STUD | 98368 | x | x | 1 | 41 | BOULON | 98368 | x | x | 1 |
| 42 | SCREW (4 x 18) | 88147 | x | x | 1 | 42 | VIS (4 x 18) | 88147 | x | x | 1 |
| 43 | NUT - Hex | 81402 | x | x | 1 | 43 | ÉCROU HEXAGONAL | 81402 | x | x | 1 |
| 44 | WASHER | 98475 | x | x | 1 | 44 | RONDELLE | 98475 | x | x | 1 |
| 45 | WASHER | 78093 | x | x | 1 | 45 | RONDELLE | 78093 | x | x | 1 |
| 46 | WASHER | 65064 | x | x | 1 | 46 | RONDELLE | 65064 | x | x | 1 |

NOTE: Correct wire location "C"
show on page 6 fig. 3

NOTA: Position exacte du fil "C" indiquée
à la page 6, fig. 3

47/54

FIGURE 2



NOTE 1 MODEL 47

| Piston I.D. Mark | Cylinder I.D. Mark |
|---------------------|-----------------------|
| N A-98355 | N |
| U A-98355-1 | U |

NOTA 1 MODÈLE 47

| Identification du piston | Identification du cylindre |
|-----------------------------|-------------------------------|
| N A-98355 | N |
| U A-98355-1 | U |

NOTE 1 MODEL 54

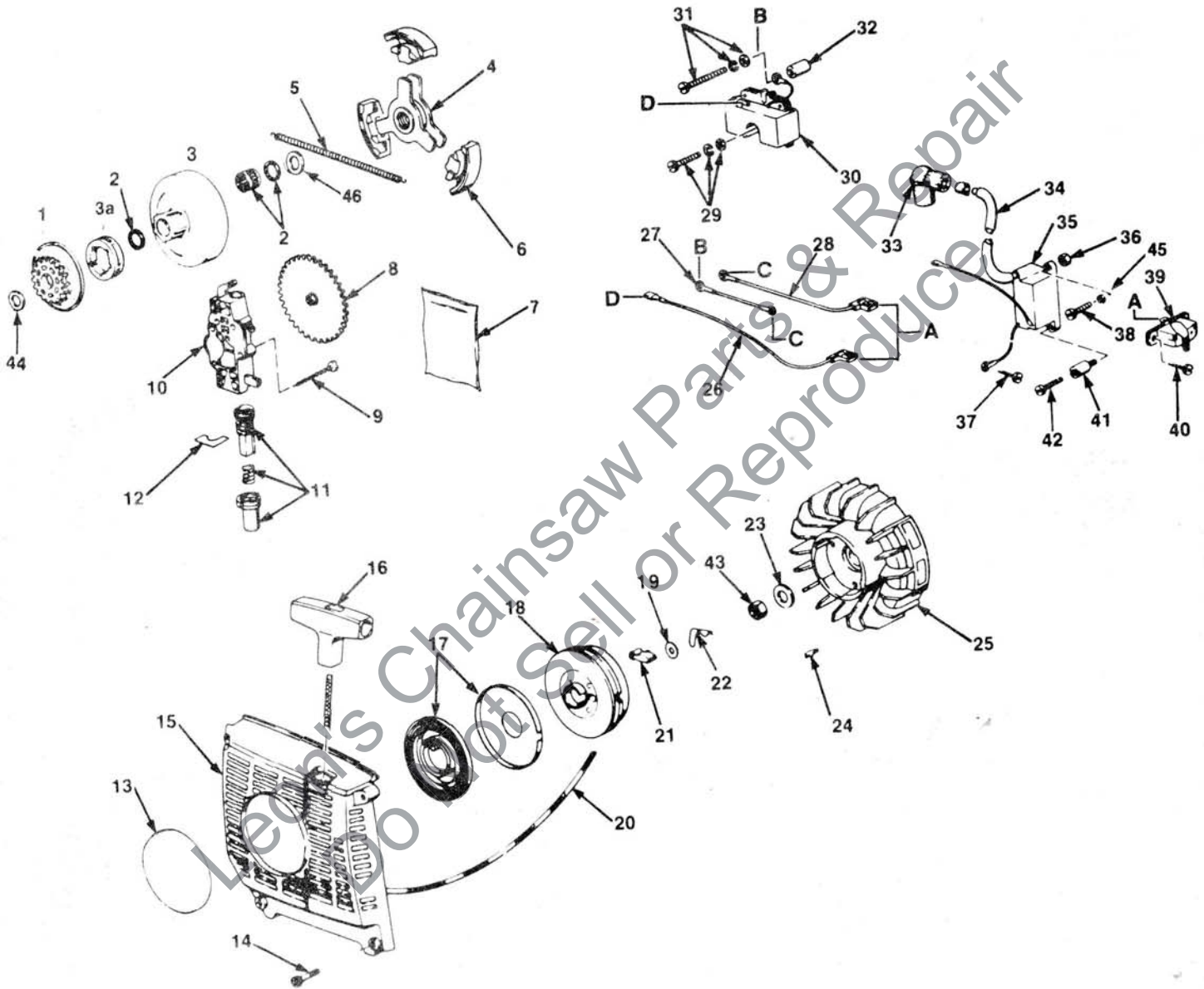
| Piston I.D. Mark | Cylinder I.D. Mark |
|---------------------|-----------------------|
| A A-98204-1 | A |
| B A-98204-2 | B |
| C A-98204-3 | C |

NOTA 1 MODÈLE 54

| Identification du piston | Identification du cylindre |
|-----------------------------|-------------------------------|
| A A-98204-1 | A |
| B A-98204-2 | B |
| C A-98204-3 | C |

47154

FIGURE 1



| NO. | DESCRIPTION | PART NO. | 47 54 Qty. | N° | DESCRIPTION | N° DE PIÈCE | 47 54 Qté |
|-----|-----------------------------|-----------|------------|----|--------------------------------|-------------|-----------|
| 1 | SCREW -(M6 x 90) | 88137 | x x 2 | 1 | VIS (M6 x 90) | 88137 | x x 2 |
| 2 | PLATE - Locking | 98242 | x x 1 | 2 | PLAQUE DE FIXATION | 98242 | x x 1 |
| 3 | WASHER - Belleville | 98446 | x x 4 | 3 | RONDELLE - Belleville | 98446 | x x 4 |
| 4 | MUFFLER ASSEMBLY | A-98233 | x x 1 | 4 | ENS. DU SILENCIEUX | A-98233 | x x 1 |
| | Includes: | | | | Inclut: | | |
| 5 | SCREW | 88156 | x x 2 | 5 | VIS | 88156 | x x 2 |
| 6 | COVER - Muffler Louvered | 98500 | x x 1 | 6 | COUVERCLE du silencieux | 98500 | x x 1 |
| 7 | SPARK ARRESTOR | 98499 | x x 1 | 7 | À AILLETES | | |
| 8 | MUFFLER GASKET | 98241 | x x 1 | | PARE-ÉTINCELLES | 98499 | x x 1 |
| 9 | SPARK PLUG (Champion RCJ6Y) | 98217 | x x 1 | 8 | JOINT DE SILENCIEUX | 98241 | x x 1 |
| 10 | CRANKCASE & CYLINDER | A-98444-1 | x 1 | 9 | BOUGIE (Champion RCJ6Y) | 98217 | x x 1 |
| | W/Piston assembly (Matched) | | | 10 | CYLINDRE & CARTER | A-98444-1 | x 1 |
| | Includes (see note 1)) | | | | avec ens. piston (assorti) | | |
| 11 | SCREW - M5 x 45 | 88133 | x 4 | | Inclut (voir Nota 1) | | |
| 12 | WASHER - Lock | 83200 | x 4 | 11 | VIS (M5 x 45) | 88133 | x 4 |
| 13 | COVER - Transfer port | 98212-1 | x 1 | 12 | RONDELLE DE BLOCAGE | 83200 | x 4 |
| 14 | INSERT - Transfer port | 98470 | x 1 | 13 | COUVERCLE (canal de transfert) | 98212-1 | x 1 |
| 15 | COVER - Transfer port | 98208 | x 1 | 14 | GARNITURE (canal de transfert) | 98470 | x 1 |
| 16 | INSERT - Transfer port | 98469 | x 1 | 15 | COUVERCLE (canal de transfert) | 98208 | x 1 |
| 17 | "O" RING | 98215 | x 2 | 16 | GARNITURE (canal de transfert) | 98469 | x 1 |
| 18 | SCREW - M4 x 12 | 88134 | x 8 | 17 | RONDELLE "O" | 98215 | x 2 |
| 20 | PISTON RINGS | 98439 | x 2 | 18 | VIS - M4 x 12 | 88134 | x 8 |
| 21 | RING - Piston pin retaining | 98198 | x 2 | 20 | SEGMENTS | 98439 | x 2 |
| 22 | CRANKSHAFT ASSEMBLY | A-98189 | x x 1 | 21 | ANNEAU DE RETENUE | 98198 | x 2 |
| 23 | BEARING - Needle roller | 98194 | x x 1 | 22 | ENS. DU VILEBREQUIN | A-98189 | x x 1 |
| 24 | SEAL - Main | 98197 | x x 2 | 23 | ROULEMENT À AIGUILLE | 98194 | x x 1 |
| 25 | RETAINER - Bearing | 98195 | x x 2 | 24 | JOINT - Principal | 98197 | x x 2 |
| 26 | BEARING - Ball | 98196 | x x 2 | 25 | PIÈCE DE BLOCAGE - Roulement | 98195 | x x 2 |
| 27 | INSERT - INTAKE PORT | 98216 | x x 1 | 26 | ROULEMENT À BILLES | 98196 | x x 2 |
| 28 | SCREW - (M5 x 23) | 88136 | x x 4 | 27 | GARNITURE - Canal d'admission | 98216 | x x 1 |
| 29 | WASHER - Flat (M5) | 83203 | x x 7 | 28 | VIS (M5 x 23) | 88136 | x x 4 |
| 30 | SCREW - (M5 x 18) | 88135 | x x 3 | 29 | RONDELLE - Plat (M5) | 83203 | x x 7 |
| 31 | CRANKCASE & CYLINDER | A-98510 | x 1 | 30 | VIS (M5 x 18) | 88135 | x x 3 |
| | W/Piston assembly (Matched) | | | 31 | CYLINDRE & CARTER | | |
| | Includes (see note 1)) | | | | avec ens. de piston (assorti) | A-98510 | x 1 |
| 32 | SCREW | 88133 | x 4 | | Inclut (voir Nota 1) | | |
| 33 | WASHER - Lock | 83200 | x 4 | 32 | VIS | 88133 | x 4 |
| 34 | TRANSFER PORT | | | 33 | RONDELLE DE FIXATION | 83200 | x 4 |
| | COVER ASSEMBLY | A-98211 | x 1 | 34 | ENS. COUVERCLE & CANAL | | |
| 35 | TRANSFER PORT | | | | DE TRANSFERT | A-98211 | x 1 |
| | COVER ASSEMBLY | A-98207 | x 1 | 35 | ENS. COUVERCLE & CANAL | | |
| 36 | "O" RING | 98215 | x 2 | | DE TRANSFERT | A-98207 | x 1 |
| 37 | SCREW (M4 x 12) | 88134 | x 8 | 36 | RONDELLE "O" | 98215 | x 2 |
| 38 | PISTON RING | 98206 | x 1 | 37 | VIS (M4 x 12) | 88134 | x 8 |
| 39 | RING - Piston pin retaining | 98198 | x 2 | 38 | SEGMENTS | 98206 | x 1 |
| 40 | SUPPORT PLATE | 98616 | x x 1 | 39 | ANNEAU DE RETENUE | 98198 | x 2 |
| | | | | 40 | PLAQUE-SUPPORT | 98616 | x x 1 |

NOTE 1

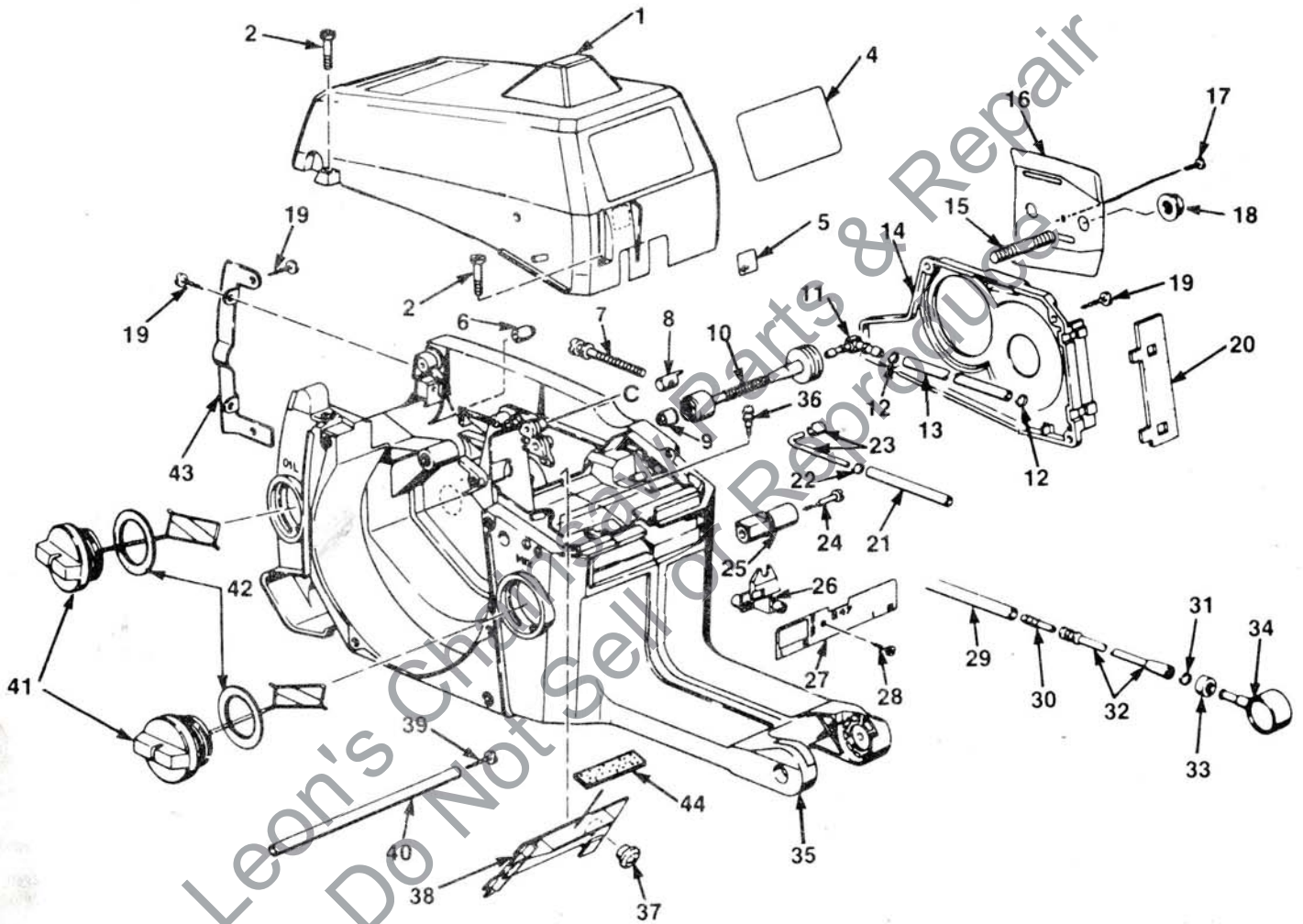
When replacing the piston only, refer to inserts and order the piston matching the cylinder I.D. letter which is stamped on top of each cylinder and piston.

NOTA 1

Au moment de remplacer le piston seulement, se référer aux insertions apparaissant et commander le piston assorti au cylindre en accouplant la lettre identificatrice se trouvant sur le dessus de chaque cylindre et chaque piston.

47/54

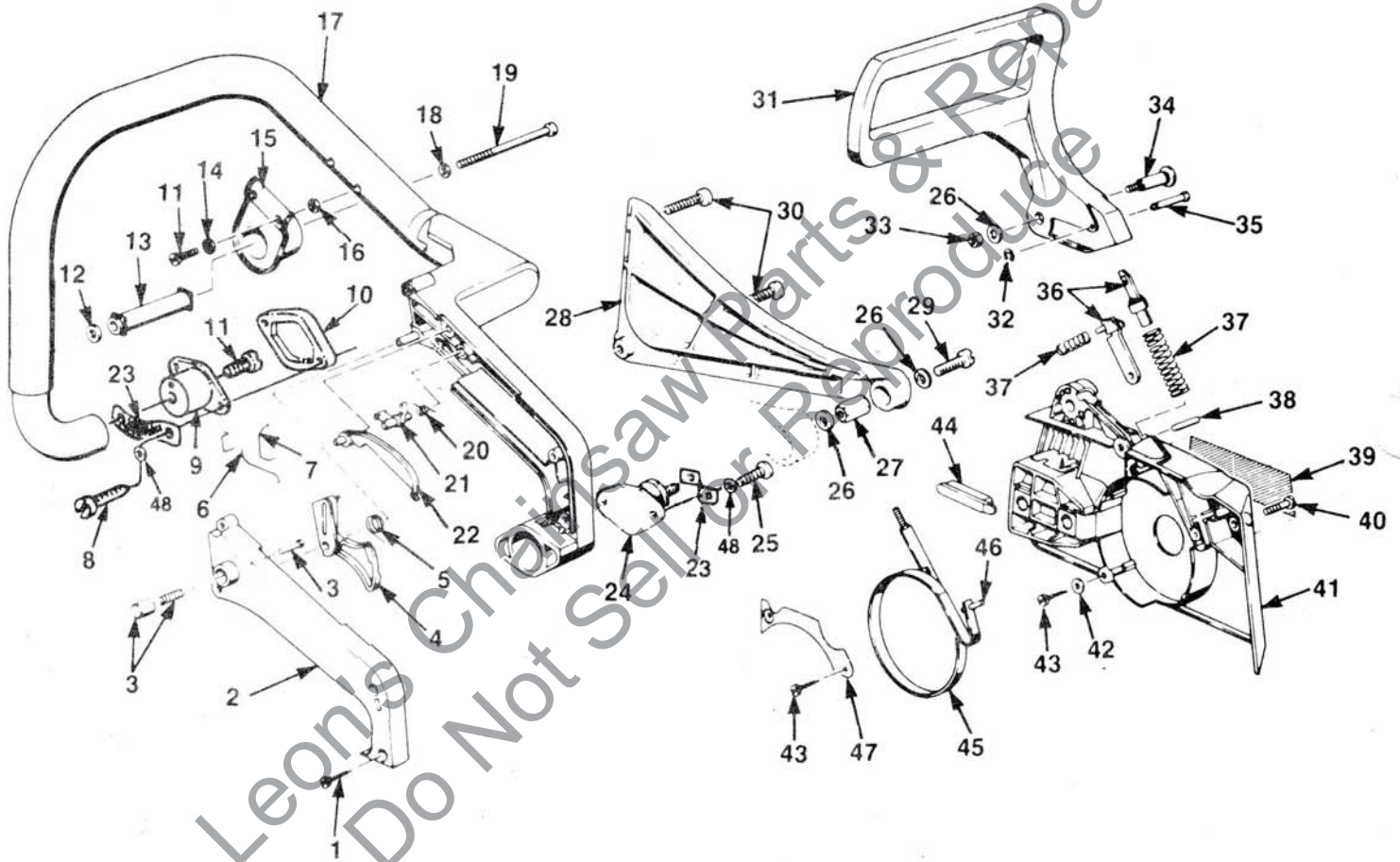
FIGURE 3



| NO. | DESCRIPTION | PART NO. | 47 54 Qty. | N° | DESCRIPTION | N° DE PIÈCE | 47 54 Qté |
|-----|-----------------------------------|----------|------------|----|-----------------------------------|-------------|-----------|
| 1 | COVER - Cylinder | 98403 | x x 1 | 1 | COUVERCLE - Cylindre | 98403 | x x 1 |
| 2 | SCREW | 88142 | x x 3 | 2 | VIS | 88142 | x x 3 |
| 4 | DECAL | 79464 | x 1 | 4 | DÉCALQUE | 79464 | x 1 |
| | DECAL | 79374 | x 1 | | DÉCALQUE | 79374 | x 1 |
| 5 | DECAL - Choke | 98338 | x x 1 | 5 | DÉCALQUE - Étrangleur | 98338 | x x 1 |
| 6 | VALVE - Check | A-98279 | x x 1 | 6 | SOUPAPE DE CONTRÔLE | A-98279 | x x 1 |
| 7 | SCREW - Guide bar adjusting | 88140 | x x 1 | 7 | VIS - Réglage de la lame | 88140 | x x 1 |
| 8 | PIN - Guide bar adjusting | 98452 | x x 1 | 8 | GOUPILLES - Réglage de la lame | 98452 | x x 1 |
| 9 | STRAINER - Oil | A-98272 | x x 1 | 9 | CRÉPINE - Huile | A-98272 | x x 1 |
| 10 | TUBE - Oil | 98271 | x x 1 | 10 | BOYAU D'HUILE | 98271 | x x 1 |
| 11 | FITTING - Elbow | 98270 | x x 1 | 11 | COUDE | 98270 | x x 1 |
| 12 | CLAMP | 98269 | x x 2 | 12 | BAGUE DE RETENUE - Fil | 98269 | x x 2 |
| 13 | TUBING - Rubber (oil line) 3" | 98232-03 | x x 1 | 13 | BOYAU D'HUILE CAOUTCHOUC (3") | 98232-03 | x x 1 |
| 14 | COVER - Oil pump | 98275 | x x 1 | 14 | COUVERCLE - Pompe à huile | 98275 | x x 1 |
| 15 | STUD - Guide bar- | 98229 | x x 2 | 15 | BOULON - Lame | 98229 | x x 2 |
| 16 | PLATE - Guide bar | 98278 | x x 1 | 16 | PLAQUE - Lame | 98278 | x x 1 |
| 17 | SCREW - (3.5 x 6.5) | 80513 | x x 1 | 17 | VIS (3,5 x 6,5) | 80513 | x x 1 |
| 18 | NUT - W/washer | 81401 | x x 2 | 18 | ÉCROU AVEC RONDELLE | 81401 | x x 2 |
| 19 | SCREW - (4 x 13) | 98460 | x x 9 | 19 | VIS (4 x 13) | 98460 | x x 9 |
| 20 | PROTECTOR - Engine housing | 98276 | x x 1 | 20 | PROTECTEUR - Carter | 98276 | x x 1 |
| 21 | TUBING - Rubber (oil line) 7-1/2" | 98232-04 | x x 1 | 21 | BOYAU D'HUILE - Caoutchouc 7-1/2" | 98232-04 | x x 1 |
| 22 | CLAMP | 98268 | x x 1 | 22 | BAGUE DE RETENUE - Fil | 98268 | x x 1 |
| 23 | OIL TUBE KIT | A-98478 | x x 1 | 23 | TROUSSE DU CONDUIT D'HUILE | A-98478 | x x 1 |
| 24 | SCREW (4.2 x 32) | 88157 | x x 1 | 24 | VIS (4,2 x 32) | 88157 | x x 1 |
| 25 | CHAIN STOP | 98277 | x x 1 | 25 | BUTÉE DE CHAÎNE | 98277 | x x 1 |
| 26 | SUPPORT - Choke lever | 98386 | x x 1 | 26 | SUPPORT - Levier de l'étrangleur | 98386 | x x 1 |
| 27 | PLATE - Switch | 98467-1 | x x 1 | 27 | PLAQUE - Interrupteur | 98467-1 | x x 1 |
| 28 | SCREW (2.9 x 9.5) | 88149 | x x 1 | 28 | VIS (2,9 x 9,5) | 88149 | x x 1 |
| 29 | TUBING - Rubber (1-1/4") | 98232-02 | x x 1 | 29 | BOYAU (1-1/4") | 98232-02 | x x 1 |
| 30 | FITTING - Hose | 98354 | x x 1 | 30 | RACCORD - Tube | 98354 | x x 1 |
| 31 | CLAMP | 98356 | x x 1 | 31 | BAGUE DE RETENUE - Fil | 98356 | x x 1 |
| 32 | LINE - Fuel pick-up | 98353 | x x 1 | 32 | BOYAU DE RÉCUPÉRATION Essence | 98353 | x x 1 |
| 33 | WEIGHT - Fuel pick-up | 98360 | x x 1 | 33 | POIDS - Boyau de récupération | | |
| 34 | FUEL FILTER ASSEMBLY | A-98357 | x x 1 | | - Essence | 98360 | x x 1 |
| 35 | ENGINE HOUSING | A-98218 | x x 1 | 34 | ENS. FILTRE À ESSENCE | A-98357 | x x 1 |
| | Includes: | | | 35 | CARTER-MOTEUR | A-98218 | x x 1 |
| 36 | FITTING - Tube | 98227 | x x 1 | | Inclut: | | |
| 37 | PLUG - Baffle | 98392 | x x 1 | 36 | RACCORD - Tube | 98227 | x x 1 |
| 38 | BAFFLE - Cylinder | 98390 | x x 1 | 37 | BOUCHON - Défecteur | 98392 | x x 1 |
| 39 | SCREW (3-1/2 x 19) | 88150 | x x 1 | 38 | DÉFLECTEUR - Cylindre | 98390 | x x 1 |
| 40 | TUBING - Rubber (vent) 8" | 98232-05 | x x 1 | 39 | VIS (3-1/2 x 19) | 88150 | x x 1 |
| 41 | CAP - Oil & Fuel w/retainer | A-98393 | x x 2 | 40 | BOYAU (ventilation) 8" | 98232-05 | x x 1 |
| | Includes: | | | 41 | BOUCHON - Réservoir huile | | |
| 42 | GASKET - Oil & Fuel | 98395 | x x 2 | | - Essence avec bague de retenue | A-98393 | x x 2 |
| 43 | PLATE - Bumper NOTE | 98294 | x x 1 | | Inclut: | | |
| 44 | STRIP - Felt | 98391 | x x 1 | 42 | JOINT - Huile & essence | 98395 | x x 2 |
| | NOTE: SPIKED BUMPER (opt) | 98293 | x x 1 | 43 | PLAQUE-Butoir NOTA | 98294 | x x 1 |
| | | | | 44 | TAMPON - Feutre | 98391 | x x 1 |
| | | | | | NOTE: PARE-CHOCS | | |
| | | | | | À CRAMPONS (optionel) | 98293 | x x 1 |

47/54

FIGURE 4

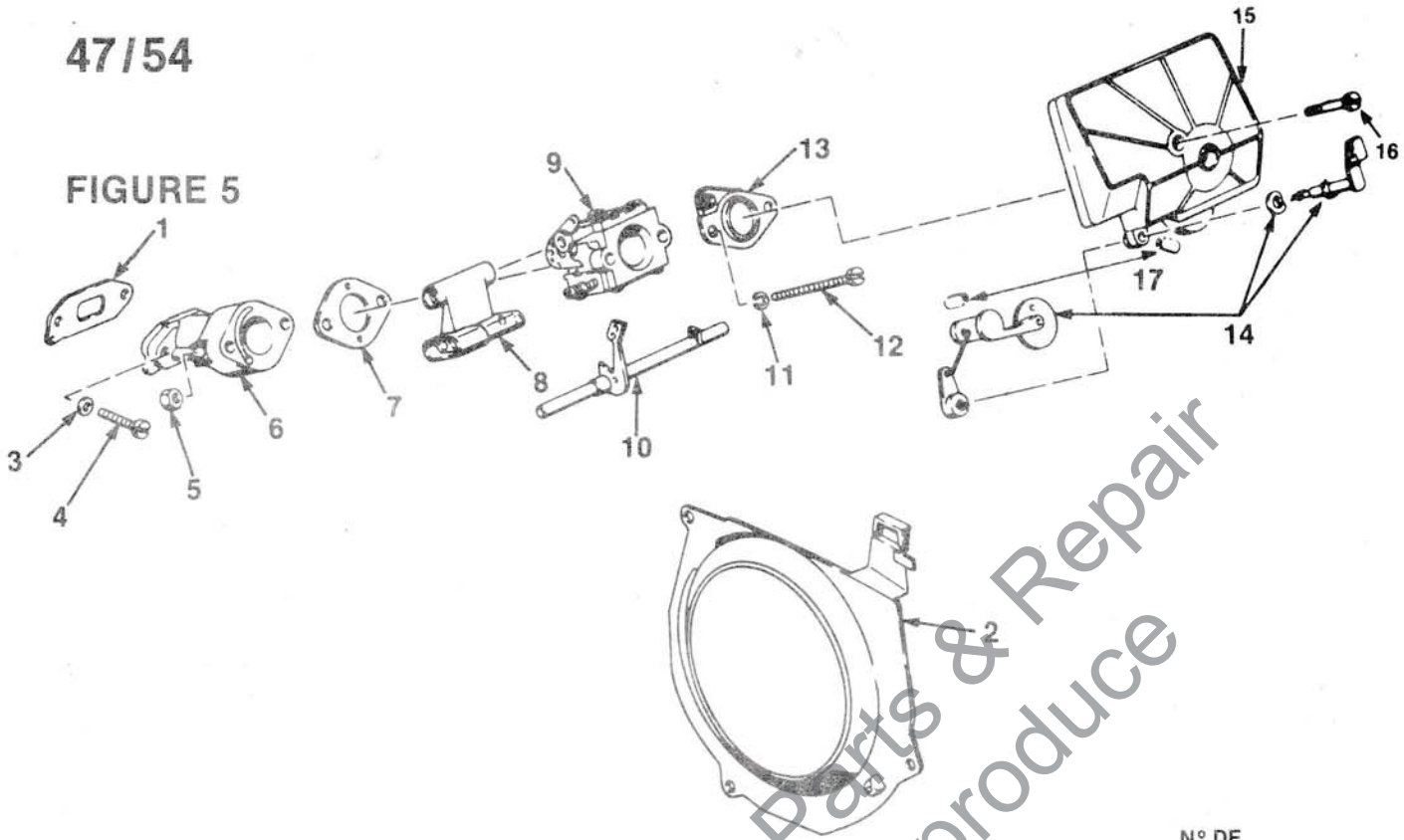


| NO. | DESCRIPTION | PART NO. | 47 54 Qty. | N° | DESCRIPTION | N° DE PIÈCE | 47 54 Qté |
|-----|-----------------------------|----------|------------|----|---------------------------------|-------------|-----------|
| 1 | SCREW - (3-1/2 x 19) | 88150 | x x 4 | 1 | VIS - (3-1/2 x 19) | 88150 | x x 4 |
| 2 | COVER - Throttle handle | 98417 | x x 1 | 2 | GAINÉ - Poignée de gâchette | 98417 | x x 1 |
| 3 | KIT - Throttle lock | A-98479 | x x 1 | 3 | ENS. VERROU D'ACCÉLÉRATEUR | A-98479 | x x 1 |
| 4 | TRIGGER - Throttle | 98412 | x x 1 | 4 | GÂCHETTE - Accélérateur | 98412 | x x 1 |
| 5 | SPRING - Throttle | 98413 | x x 1 | 5 | RESSORT - Accélérateur | 98413 | x x 1 |
| 6 | LINK - Throttle | 98363 | x x 1 | 6 | ATTACHE - Accélérateur | 98363 | x x 1 |
| 7 | LINK - Throttle | 98364 | x x 1 | 7 | ATTACHE - Accélérateur | 98364 | x x 1 |
| 8 | SCREW - (4.22 x 22) | 88153 | x x 2 | 8 | VIS (4.22 x 22) | 88153 | x x 2 |
| 9 | ISOLATOR | A-98420 | x x 1 | 9 | ISOLATEUR | A-98420 | x x 1 |
| 10 | ISOLATOR SAFETY SPACER | 98429 | x x 1 | 10 | CÂLE DE SÉCURITÉ - Isolateur | 98429 | x x 1 |
| 11 | SCREW - (M5 x 12) | 88151 | x x 3 | 11 | VIS (M5 x 12) | 88151 | x x 3 |
| 12 | WASHER - Flat | 83210 | x x 1 | 12 | RONDELLE - Plate | 83210 | x x 1 |
| 13 | SPACER - Isolator | 98430 | x x 1 | 13 | CÂLE - Isolateur | 98430 | x x 1 |
| 14 | WASHER - Lock | 83208 | x x 2 | 14 | RONDELLE - Verrou | 83208 | x x 2 |
| 15 | HANDLE BAR ISOLATOR | A-98426 | x x 1 | 15 | ISOLATEUR - Guidon | A-98426 | x x 1 |
| 16 | WASHER | 83212 | x x 4 | 16 | RONDELLE | 83212 | x x 4 |
| 17 | HANDLE BAR ASSEMBLY | A-98404 | x x 1 | 17 | ENS. DU GUIDON | A-98404 | x x 1 |
| 18 | WASHER - Lock | 98432 | x x 1 | 18 | RONDELLE - Verrou | 98432 | x x 1 |
| 19 | SCREW - (M6 x 65) | 88152 | x x 1 | 19 | VIS (M6 x 65) | 88152 | x x 1 |
| 20 | SPRING - Torsion | 98415 | x x 1 | 20 | RESSORT - Torsion | 98415 | x x 1 |
| 21 | LEVER - Throttle lock | 98414 | x x 1 | 21 | LEVIER - Verrou d'accélérateur | 98414 | x x 1 |
| 22 | LOCK - Throttle | 98416 | x x 1 | 22 | VERROU - Accélérateur | 98416 | x x 1 |
| 23 | STRAP - Isolator | 98400 | x x 2 | 23 | BARRE DE RETENUE - Isolateur | 98400 | x x 2 |
| 24 | ISOLATOR | 98398 | x x 1 | 24 | ISOLATEUR | 98398 | x x 1 |
| 25 | SCREW (4.2 x 16) | 88139 | x x 2 | 25 | VIS (4.2 x 16) | 88139 | x x 2 |
| 26 | WASHER - Lock | 83203 | x x 3 | 26 | RONDELLE - Verrou | 83203 | x x 3 |
| 27 | NUT | 81409 | x x 1 | 27 | ÉCROU | 81409 | x x 1 |
| 28 | HAND GUARD (rear) | 98431 | x x 1 | 28 | PROTÈGE-MAIN (arrière) | 98431 | x x 1 |
| 29 | BOLT (M5 x 10) | 88154 | x x 1 | 29 | BOULON (M5 x 10) | 88154 | x x 1 |
| 30 | SCREW (4 x 20) | 98433 | x x 2 | 30 | VIS (4 x 20) | 98433 | x x 2 |
| 31 | HAND GUARD | 98306 | x x 1 | 31 | PROTÈGE-MAIN | 98306 | x x 1 |
| 32 | RING - Retaining | 93574 | x x 1 | 32 | ANNEAU DE RETENUE | 93574 | x x 1 |
| 33 | NUT | 98457 | x x 1 | 33 | ÉCROU | 98457 | x x 1 |
| 34 | SCREW - Shoulder | 98461 | x x 1 | 34 | VIS À ÉPAULEMENT | 98461 | x x 1 |
| 35 | PIN | 98422 | x x 1 | 35 | GOUPILLE | 98422 | x x 1 |
| 36 | ADJUSTMENT SET | A-98481 | x x 1 | 36 | ENS. DE RÉGLAGE | A-98481 | x x 1 |
| 37 | SPRING SET | A-98480 | x x 1 | 37 | ENSEMBLE - Ressort | A-98480 | x x 1 |
| 38 | PIN | 98456 | x x 1 | 38 | GOUPILLE | 98456 | x x 1 |
| 39 | DECAL - Homelite | 98185 | x x 1 | 39 | DÉCALQUE - Homelite | 98185 | x x 1 |
| 40 | SCREW - (5 x 20) | 88142 | x x 1 | 40 | VIS (5 x 20) | 88142 | x x 1 |
| 41 | DRIVE CASE COVER (see note) | A-98296 | x x 1 | 41 | BÂTI DU CARTER (voir Nota) | A-98296 | x x 1 |
| 42 | WASHER | 83205 | x x 1 | 42 | RONDELLE | 83205 | x x 1 |
| 43 | SCREW (3.5 x 13) | 88148 | x x 3 | 43 | VIS (3.5 x 13) | 88148 | x x 3 |
| 44 | GUIDE - Chain | 98309 | x x 2 | 44 | GUIDE-CHAÎNE | 98309 | x x 2 |
| 45 | BRAKE BAND ASSEMBLY | A-98298 | x x 1 | 45 | ENS. BANDE DE FREIN | A-98298 | x x 1 |
| | Includes: | | | | Inclut: | | |
| 46 | PIN - Dowel | 98447 | x x 1 | 46 | GOUPILLE | 98447 | x x 1 |
| 47 | COVER - Plate | 98307 | x x 1 | 47 | COUVERCLE - Plaque | 98307 | x x 1 |
| 48 | WASHER | 84025 | x x 2 | 48 | RONDELLE | 84025 | x x 2 |
| | NOTE: CHAINBRAKE COMPLETE | A-98295 | x x 1 | | NOTA: ENSEMBLE DE FREIN COMPLET | A-98295 | x x 1 |

ALWAYS FURNISH MODEL AND SERIAL NUMBERS WHEN ORDERING PARTS.
VEUILLEZ TOUJOURS FOURNIR LE NUMÉRO DE MODÈLE ET DE SÉRIE LORSQUE VOUS COMMANDEZ DES PIÈCES.

47/54

FIGURE 5



| NO. | DESCRIPTION | PART NO. | 47 54 Qty. | N° | DESCRIPTION | N° DE PIÈCE | 47 54 Qté |
|-----|----------------------------|----------|------------|----|----------------------------------|-------------|-----------|
| 1 | GASKET - Intake manifold | 98335 | x x 1 | 1 | JOINT - Collecteur d'admission | 98335 | x x 1 |
| 2 | GUIDE - Air | 98319 | x x 1 | 2 | GUIDE - Air | 98319 | x x 1 |
| 3 | WASHER - Spring | 83203 | x x 2 | 3 | RONDELLE - Ressort | 83203 | x x 2 |
| 4 | SCREW (M5 x 20) | 98459 | x x 2 | 4 | VIS (M5 x 20) | 98459 | x x 2 |
| 5 | NUT (M5) | 81405 | x x 2 | 5 | ECROU (M5) | 81405 | x x 2 |
| 6 | MANIFOLD - Intake | 98337-1 | x x 1 | 6 | COLLECTEUR D'ADMISSION | 98337-1 | x x 1 |
| 7 | GASKET - Carburetor | 98339 | x x 1 | 7 | JOINT - Carburateur | 98339 | x x 1 |
| 8 | GUIDE - Carburetor screw | 98361 | x x 1 | 8 | GUIDE - Vis du carburateur | 98361 | x x 1 |
| 9 | CARBURETOR (HU63A) (Till.) | A-98340 | x x 1 | 9 | CARBURATEUR (HU63A) (Till.) | A-98340 | x x 1 |
| 10 | SHAFT - Throttle | 98362 | x x 1 | 10 | AXE - Accélérateur | 98362 | x x 1 |
| 11 | WASHER - Spring | 83208 | x x 2 | 11 | RONDELLE - Ressort | 83208 | x x 2 |
| 12 | SCREW - (M5 x 45) | 88143 | x x 2 | 12 | VIS (M5 x 45) | 88143 | x x 2 |
| 13 | PLATE - Filter mounting | 98351 | x x 1 | 13 | ADAPTEUR - Filtre à air | 98351 | x x 1 |
| 14 | KIT - Choke lever | A-98486 | x x 1 | 14 | TROUSSE - Levier de l'étrangleur | A-98486 | x x 1 |
| 15 | AIR FILTER ASSEMBLY | A-98487 | x x 1 | 15 | ENS. FILTRE À AIR | A-98487 | x x 1 |
| | Includes: | | | | Inclut: | | |
| 16 | SCREW | 98464 | x x 1 | 16 | VIS | 98464 | x x 1 |
| 17 | BUSHING | 98508-1 | x x 2 | 17 | COUSSINET | 98508-1 | x x 2 |

ACCESSORIES & TOOLS

| | |
|----------------------|-------|
| BUMPER SPIKE | 98293 |
| ROTOR REMOVAL TOOL | 98488 |
| FLYWHEEL HOLDER TOOL | 98489 |
| COMBINATION WRENCH | 98437 |
| SILICONE SEALANT | 24823 |
| MULTI-PURPOSE GREASE | 17193 |

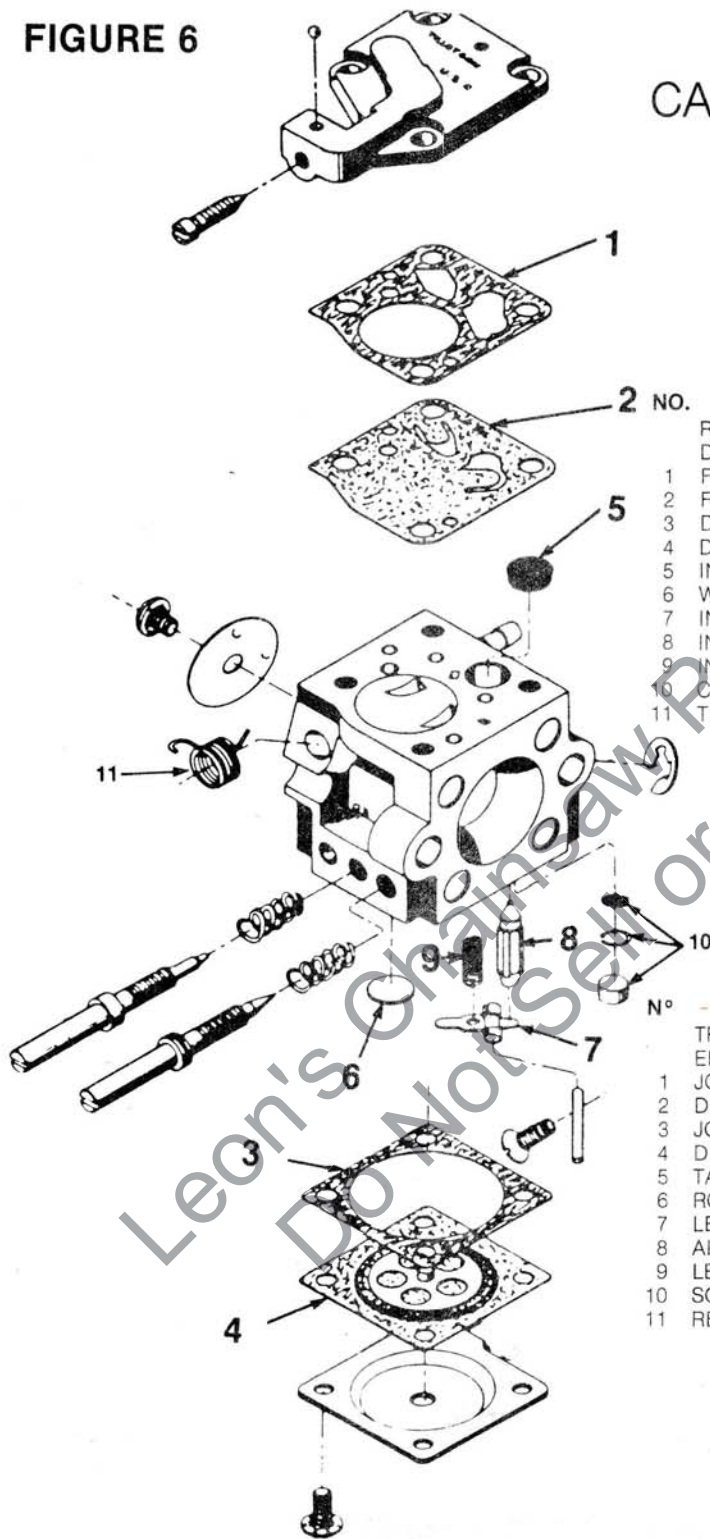
ACCESSOIRES & OUTILS

| | |
|----------------------------|-------|
| PARE-CHOC À CRAMPONS | 98293 |
| EXTRACTEUR DE ROTOR | 98488 |
| OUTIL DE BLOCAGE DU ROTOR | 98489 |
| CLÉ COMBINÉE | 98437 |
| COMPOSÉ D'ÉTANCHÉITÉ | 24823 |
| GRAISSE À USAGES MULTIPLES | 17193 |

ALWAYS FURNISH MODEL AND SERIAL NUMBER WHEN ORDERING PARTS.
VEUILLEZ TOUJOURS FOURNIR LE NUMÉRO DE MODÈLE ET DE SÉRIE LORSQUE VOUS COMMANDEZ DES PIÈCES.

FIGURE 6

CARBURETOR/CARBURATEUR
(HU63A)
A-98340



| NO. | DESCRIPTION | PART NO. | Qty. |
|-----|------------------------------------|----------|------|
| | REPAIR-Kit (excludes 1 to 9) | A-98494 | 1 |
| | DIAPHRAGM AND GASKET Set (1,2,3,4) | A-98493 | 1 |
| 1 | FUEL - Pump Gasket | 98490 | 1 |
| 2 | FUEL - Pump Diaphragm | 98491 | 1 |
| 3 | DIAPHRAGM - Gasket | 94938 | 1 |
| 4 | DIAPHRAGM | 94936 | 1 |
| 5 | INLET - Screen | 58974 | 1 |
| 6 | WELCH - Plug | 94933 | 1 |
| 7 | INLET - Control Lever | 94934 | 1 |
| 8 | INLET - Needle | 59717 | 1 |
| 9 | INLET - Lever Spring | 58974 | 1 |
| 10 | CHECK - Valve | 98492 | 1 |
| 11 | THROTTLE - Return Spring | 77490-01 | 1 |

| N° | DESCRIPTION | N° DE PIÈCE | Qté |
|----|-------------------------------------|-------------|-----|
| | TROUSSE de réparation (exclut 1-9) | A-98494 | 1 |
| | ENS. - Joint & diaphragme (1,2,3,4) | A-98493 | 1 |
| 1 | JOINT - Pompe à essence | 98490 | 1 |
| 2 | DIAPHRAGME - Pompe à essence | 98491 | 1 |
| 3 | JOINT - Diaphragme | 94938 | 1 |
| 4 | DIAPHRAGME | 94936 | 1 |
| 5 | TAMIS D'ADMISSION | 58974 | 1 |
| 6 | RONDELLE OBTURATRICE | 94933 | 1 |
| 7 | LEVIER DE RÉGLAGE - Admission | 94934 | 1 |
| 8 | AIGUILLE D'ADMISSION | 59717 | 1 |
| 9 | LEVIER DU RESSORT - Admission | 58974 | 1 |
| 10 | SOUPAPE DE RETENUE | 98492 | 1 |
| 11 | RESSORT DE RAPPEL - Accélérateur | 77490-01 | 1 |

ALWAYS FURNISH MODEL AND SERIAL NUMBER WHEN ORDERING PARTS.
VEUILLEZ TOUJOURS FOURNIR LE NUMÉRO DE MODÈLE ET DE SÉRIE LORSQUE VOUS COMMANDEZ DES PIÈCES.

Leon's Chainsaw Parts & Repair
Do Not Sell or Reproduce

HOMELITE-TERRY
TEXTRON

P.O. Box/C.P. 1800,
Pointe-Claire, Québec H9R 4R6