

HOMELITE[®]
JACOBSEN

PART NO. 17598 REV. 2

Printed in U.S.A.

Price 35¢

PARTS LIST



HOMELITE[®]

410

(UT-10486-B)

410 SL

(UT-10587-B)

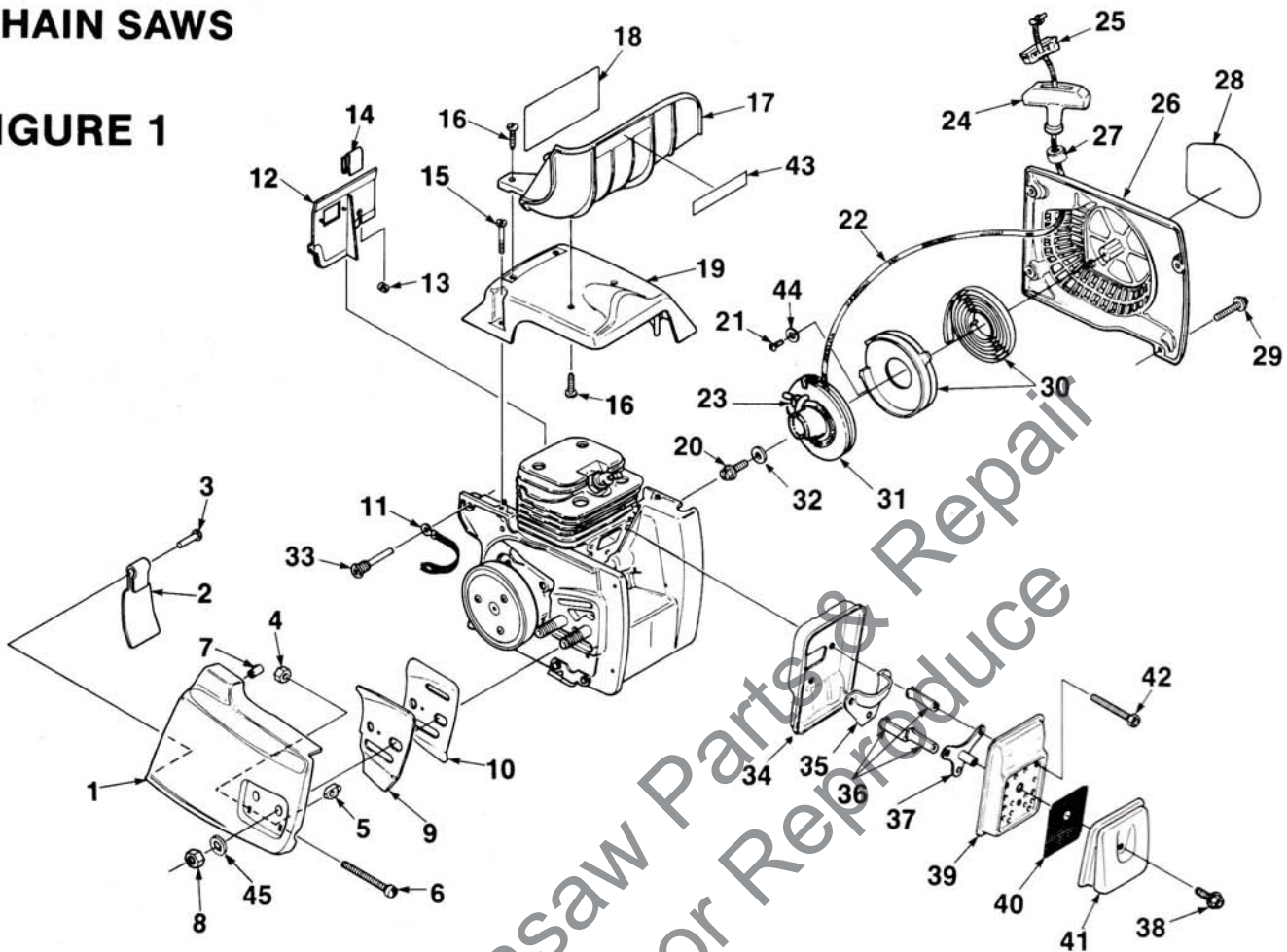
CHAIN SAWS

HOMELITE **TEXTRON**

Homelite Division of Textron Inc.

410/410 SL CHAIN SAWS

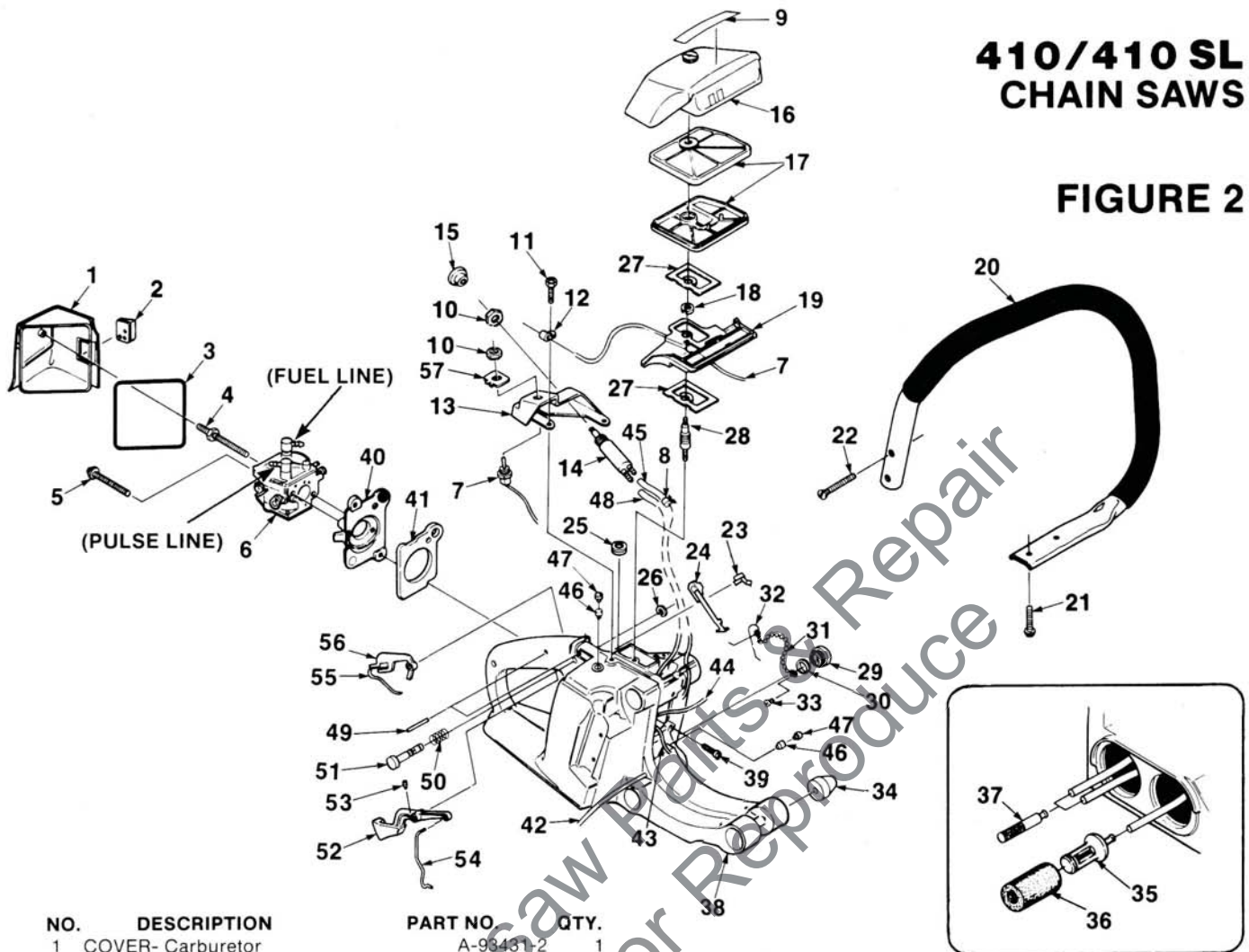
FIGURE 1



NO.	DESCRIPTION	PART NO.	QTY.	NO.	DESCRIPTION	PART NO.	QTY.
1	COVER- Drivecase Includes:	A-96500	1	24	GRIP- Starter rope Includes:	A-69962-B	1
2	SHIELD- Sawdust	93439	1	25	INSERT- Rope retaining	70018-A	1
3	RIVET- Pan hd.	85154	1	26	HOUSING- Starter Includes:	A-93168-A	1
4	NUT- Hex 1/4-20	81204	1	27	BUSHING	67177	1
5	PIN- Guide bar adj.	93039	1	28	DECAL- "410"	93415-A	1
6	SCREW- Guide bar adj.	63367	1	29	SCREW- Hex Sems 10-24 x 5/8	82298	4
7	BUSHING	95839	1	30	SPRING- Rewind	A-93370	1
8	NUT- 3/8-16	81089-2	2	31	STARTER PULLEY & CUP	A-93359	1
9	PLATE- Guide bar (outer) 410 only	70400	1	32	WASHER- Retaining	58763	1
10	PLATE- Guide bar (inner)	70399	1	33	PIN- Isolator	93367	6
11	STRAP- Ground	A-93459-A	1	34	BODY- Muffler	93347	1
12	DEFLECTOR- Air Includes:	A-96866	1	35	PLATE- Stiffner	93349	1
13	GROMMET	93357	1	36	SPACER- Muffler	93983-03	3
14	SPRING- Clip	96200	1	37	SPACER & PLATE Includes:	A-95062	1
15	SCREW- Cylinder cover 8-32 x 7/8	93397-A	3	38	SCREW- Hex Sems 10-32 x .375	88048	1
16	SCREW- Threaded rolling plastite #10 x 5/8	82312	4	39	COVER- Muffler	93348-1A	1
17	GUARD- Hand Includes:	A-95092	1	40	SCREEN- Spark	93344	1
18	DECAL- Safety warning	96990	1	41	CAP- Muffler exhaust	A-93355-A	1
19	COVER- Cylinder (410 only)	93163-1	1	42	SCREW- Hex hd. 12-24 x 1 7/8	94129	3
20	SCREW- #10 x .625	93417	1	43	LABEL- Homelite	96479	1
21	SCREW- Plastite 6 x 1/4	82215	1	44	WASHER- Flat	84025	1
22	ROPE- Starter #5 45" Includes:	A-49137	1	45	WASHER- Flat	95479-A	2
23	WASHER- Lock	83060	1				

410/410 SL CHAIN SAWS

FIGURE 2



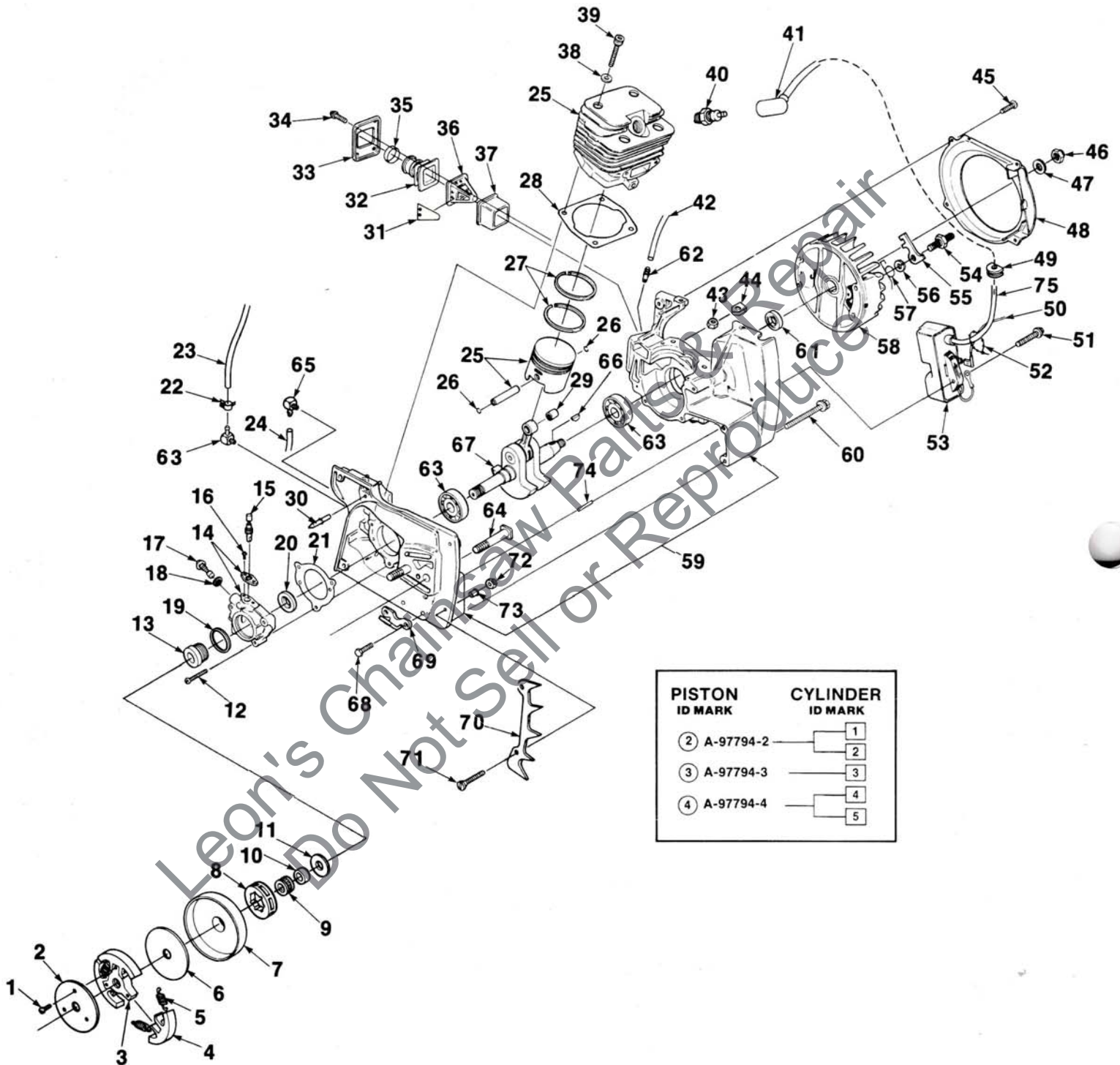
NO.	DESCRIPTION	PART NO.	QTY.
1	COVER- Carburetor Includes:	A-93431-2	1
2	GROMMET (Hi-Lo)	93470	1
3	GASKET- Carburetor	97620	1
4	STUD- Shoulder	93468	1
5	SCREW- Hex Sems 10-24 x 1 7/8	93460	1
6	CARBURETOR (Walbro)	A-97102	1
7	SWITCH & LEAD	A-97837	1
8	CLAMP	93426	1
9	LABEL- Warning	95731	1
10	NUT- Toggle switch	72084-A1	3
11	SCREW- Hex Sems hd. 10-24 x 1/2	86049	2
12	CLAMP- Wire	96717	1
13	PANEL- Rear	93215-1	1
14	PUMP- Manual oil Includes:	A-96976	1
15	BUTTON	65084	1
16	COVER- Air filter	A-97094	1
17	FILTER- Air	A-93401	1
18	RING- Retaining	93389	1
19	SUPPORT- Filter cover	93364	1
20	HANDLE BAR (flush cut) KIT- Handle bar (wrap-around) opt. Includes:	A-93409-A A-96605-A	1
	BUSHING	93428	1
	BRACKET	93427	1
	SCREW- Oval hd. 10-24	82494	2
21	SCREW- Hex Sems 10-24 x .625	88050	2
22	SCREW- 10-24 x 1 1/4	82389	2
23	RETAINER- Choke	93381	1
24	ROD- Choke	93372	1
25	BOOT- Throttle rod	69889	1
26	RING- Retaining	93377	1
27	GASKET FILTER & SUPPORT	97635	1
28	STUD- Threaded	93382-A	1
29	CAP- Fuel (red) CAP- Oil (black) Includes:	A-97799 A-97798	1
30	GASKET- Fuel & Oil Cap	93422	2

NO.	DESCRIPTION	PART NO.	QTY.
31	BEAD- Chain	69502	2
32	RETAINER- Filler cap	96535	2
33	SCREW- Plastite	82256	2
34	ISOLATOR	93368	6
35	FILTER- Fuel Includes:	A-97700	1
	ELEMENT- Filter	59253-1A	1
36	FILTER- Oil	A-59009-A	2
37	HOUSING- Engine Includes:	A-93446-A	1
	SCREW- Soc hd. 10-24 x 1/2	80022	2
40	PLATE- Carburetor	97623-1	1
41	SPACER- Carburetor	97622-A	1
42	TUBING- 6 3/4" (auto pick up)	93112-23	1
43	TUBING- 4 3/4" (pulse line)	93157-19	1
44	TUBING- 8 3/4" (fuel line pick up)	93112-32	1
45	TUBING- 5" (Man. delivery)	93112-20	1
46	VALVE- Check	69451	2
47	FILTER- 11/32" (Note 1)	93410	1
48	TUBING- 9 3/4" (man pick up)	93112-36	1
49	PIN- Trigger	68548	2
50	SPRING- Compression	93376	1
51	PIN- Throttle lock	93375	1
52	TRIGGER Includes:	A-93374-A	1
	SCREW- Set 6-32 x 1/4	82373	1
54	ROD- Throttle	93371-A	1
55	SPRING- Flat	93386	1
56	LOCK- Trigger	93385	1
57	PLATE- Indicating	93388	1

NOTE 1: Unit with A-93446 engine housing are to use 69454 filter, prior to Lot #215.

410/410 SL CHAIN SAWS

FIGURE 3



410/410 SL CHAIN SAWS

FIGURE 3

NO.	DESCRIPTION	PART NO.	QTY.	NO.	DESCRIPTION	PART NO.	QTY.
1	SCREW- Pan hd. 8-32 x 3/8	82253	3	43	NUT- Centerlock 10-24	81208	4
2	COVER- Clutch	93628	1	44	RETAINER- Nut	12689-A	2
3	SPIDER- Clutch	93639	1	45	SCREW- Pan hd. 6-32 x 3/8	82251	4
4	SHOE- Clutch	A-93632-A	3	46	NUT- Lock 3/8-24	81255	1
5	SPRING- Clutch	93814-A	3	47	WASHER- Flat	95479-A	1
6	WASHER- Thrust	93650	1	48	SCROLL- Air guide	93312	1
7	DRUM & HUB	A-94302	1	49	GROMMET	58318	1
8	SPROCKET 3/8 pitch 7 tooth SPROCKET & DRUM (spur type 3/8" 7t) (see note 2)	95058 A-95465	1 1	50	SWITCH & LEAD (see figure 2, index #7 for breakdown)	A-97837	1
9	BEARING- Roller	64124	1	51	SCREW- Hex Sems 10-24 x .875	88052	2
10	RACE- Inner	64129-A	1	52	CLAMP- Wire	50729	1
11	WASHER- Thrust (see note 2)	63462	1	53	MODULE	A-93414	1
12	SCREW- Fil. hd. 10-24 x 7/8	80660	3	54	STUD	58757-E	2
13	WORM- Oil pump	93336	1	55	PAWL- Starter	58756	2
14	PUMP- Automatic oil Includes:	A-93319	1	56	WASHER- Lock	70901	2
15	GEAR- Plunger & Hel.	93321	1	57	SPRING- Starter pawl	65375-2	2
16	SCREW- 4-40 x 1/4	80919	2	58	ROTOR	93313	1
17	SCREW- Cam	64102-A	1	59	CRANKCASE	A-93441	1
18	GASKET	59736	1		Includes:		
19	SEAL- Felt	59926	1	60	SCREW- 10-24 x 1.75	88056	5
20	SEAL	12282-A	1	61	SEAL	12282-A	1
21	GASKET	93329	1	62	FITTING	69833	1
22	CLAMP	93426	1	63	BEARING- Ball	94621	2
23	TUBING 5" (manual delivery)	93112-20	1	64	BOLT- Guide bar	93310	2
24	TUBING- 6 3/4" (auto oil pick-up)	93112-23	1	65	FITTING	70204	2
	PISTON & CYLINDER KIT (NOTE 3)	A-97560	1	66	KEY- Woodruff	75078	1
	Includes:			67	CRANKSHAFT	A-97567	1
25	PISTON	A-97794-2	1		Includes:		
	PISTON	A-97794-3	1		BEARING- Needle (prior to E286)		
	PISTON	A-97794-4	1		(See #29)	93369	1
	Includes:				BEARING- Ball (see index #63)	94621	1
26	RING- Retaining	64813	2		BEARING- Needle (long)		
27	PISTON RING	93216	2		(see index #29) (after lot #286)	97566	
28	GASKET	93338	1	68	SCREW- Hex Sems 8-32 x 1/2	88042	2
29	NEEDLE- Bearing (after lot #E286)	97566	1	69	STOP- Chain	70705	1
30	PIN- Dowel	96865	1	70	KIT- Spiked bumper	A-93445-B	1
31	REED	93325	1		Includes:		
32	CONNECTOR- Carburetor	93327	1	71	SCREW- 10-24 x 1/2"	97636	2
33	RETAINER- Reed valve	93328	1	72	NUT	81261	2
34	SCREW- Washer hd. 8-32 x 5/8	80582	4	73	WASHER- Sealing	97633	1
35	STIFFNER- Connector (for units prior to Lot #C300)	93323	1	74	PIN- Dowel	31062	2
36	SEAT- Reed valve	93324	1	75	LEAD- High tension (note 1)	69326	1
37	RETAINER- Reed	93326-A	2		SAFE•T•TIP (not shown)	DA-70790-A	1
38	WASHER	12021	4		Includes:		
39	SCREW- Soc hd. 10-24 x 1 1/8	93399	4		SCREW	82335	1
40	SPARK PLUG (DJ7Y)	96169-S	1				
41	TERMINAL- Spark plug	A-33055	1				
42	TUBING- 4 3/4"	93157-19	1				

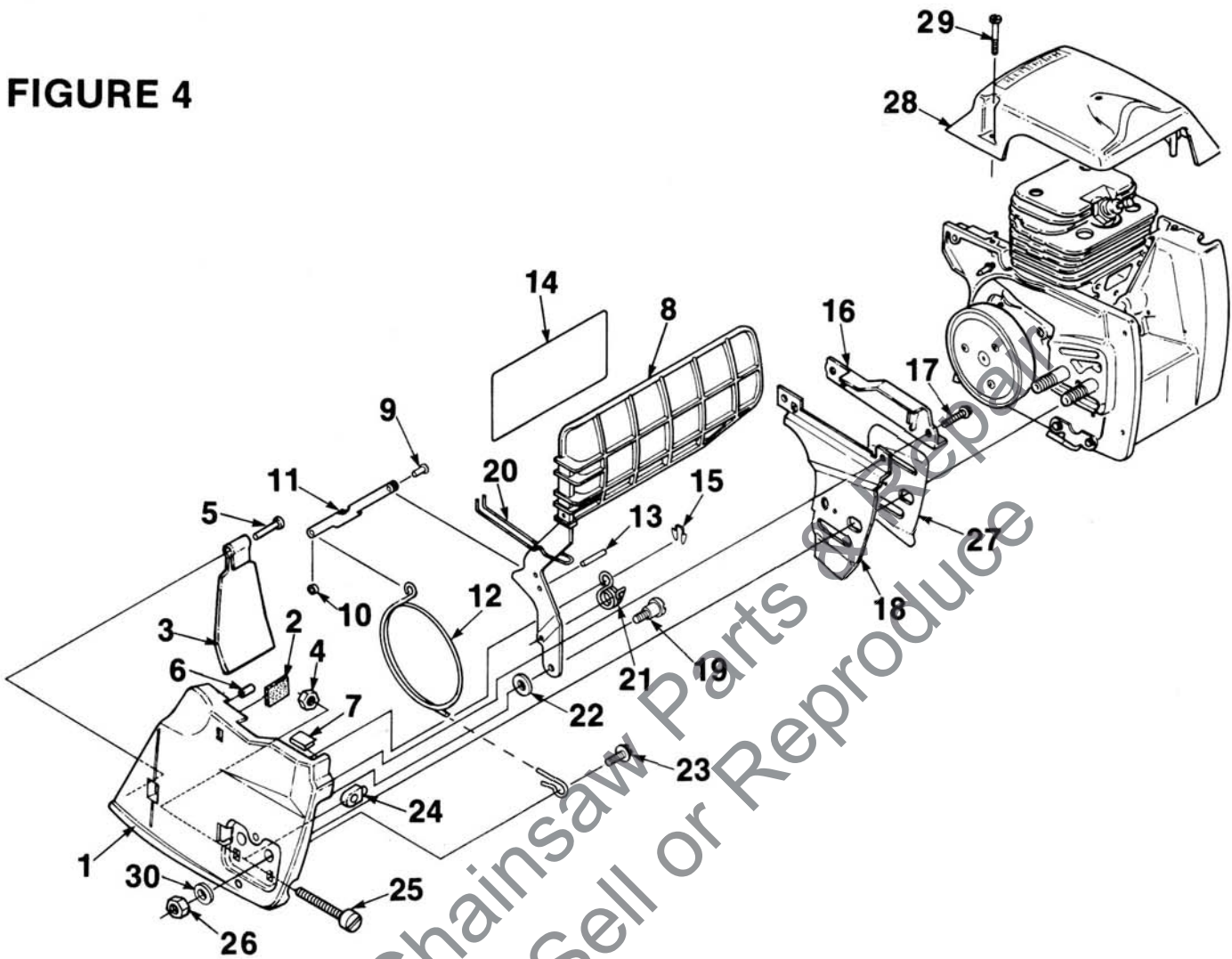
NOTE 1: Cut replacement lead 69326 to 6".

NOTE 2: When using A-95465 sprocket, use 63463 washer.

NOTE 3: When replacing the piston only, refer to the insert and order the piston matching the cylinder I.D. number which is stamped on top of each cylinder and piston.

410 SL CHAIN SAW ONLY

FIGURE 4



NO.	DESCRIPTION	PART NO.	QTY.	NO.	DESCRIPTION	PART NO.	QTY.
	KIT- Chain brake	A-96941-B	1	15	RING- Retaining	93464	1
	Includes:			16	SHIELD	93482	1
1	COVER- Drivecase	A-97374	1	17	SCREW- Pan hd. 6-32 x 3/8	82251	2
	Includes:			18	PLATE- Guide bar (outer)	93481	1
2	BUMPER- Foam	97587	1	19	SCREW- Shoulder	93492	1
3	SHIELD- Sawdust	93439	1	20	SPRING	93491	1
4	NUT- Hex (1/4-20)	81204	1	21	SPRING- Torsion	93489	1
5	RIVET- Pan hd.	85154	1	22	WASHER- Flat	93466	1
6	BUSHING	95839	1	23	SCREW- 1/4-20 x 3/8	80136	1
7	CLIP- Spring	93435	1	24	PIN- Guide bar adjusting	93039	1
8	GUARD- Hand (w/brake)	A-93485-D	1	25	SCREW- Guide bar adjusting	63367	1
	Includes:			26	NUT	80189-2	1
9	RIVET- Truss hd.	93436	1	27	PLATE- Guide bar (inner)	70399	2
10	SPACER	93495	1	28	COVER- Cylinder	A-97762	1
11	LINK- Pivot	93488	1		Includes:		
12	BAND- Brake	93490-1	1	29	SCREW	93397-A	3
13	PIN- Dowel	59751	1	30	WASHER- Flat	95479-A	2
14	DECAL	96990	1				

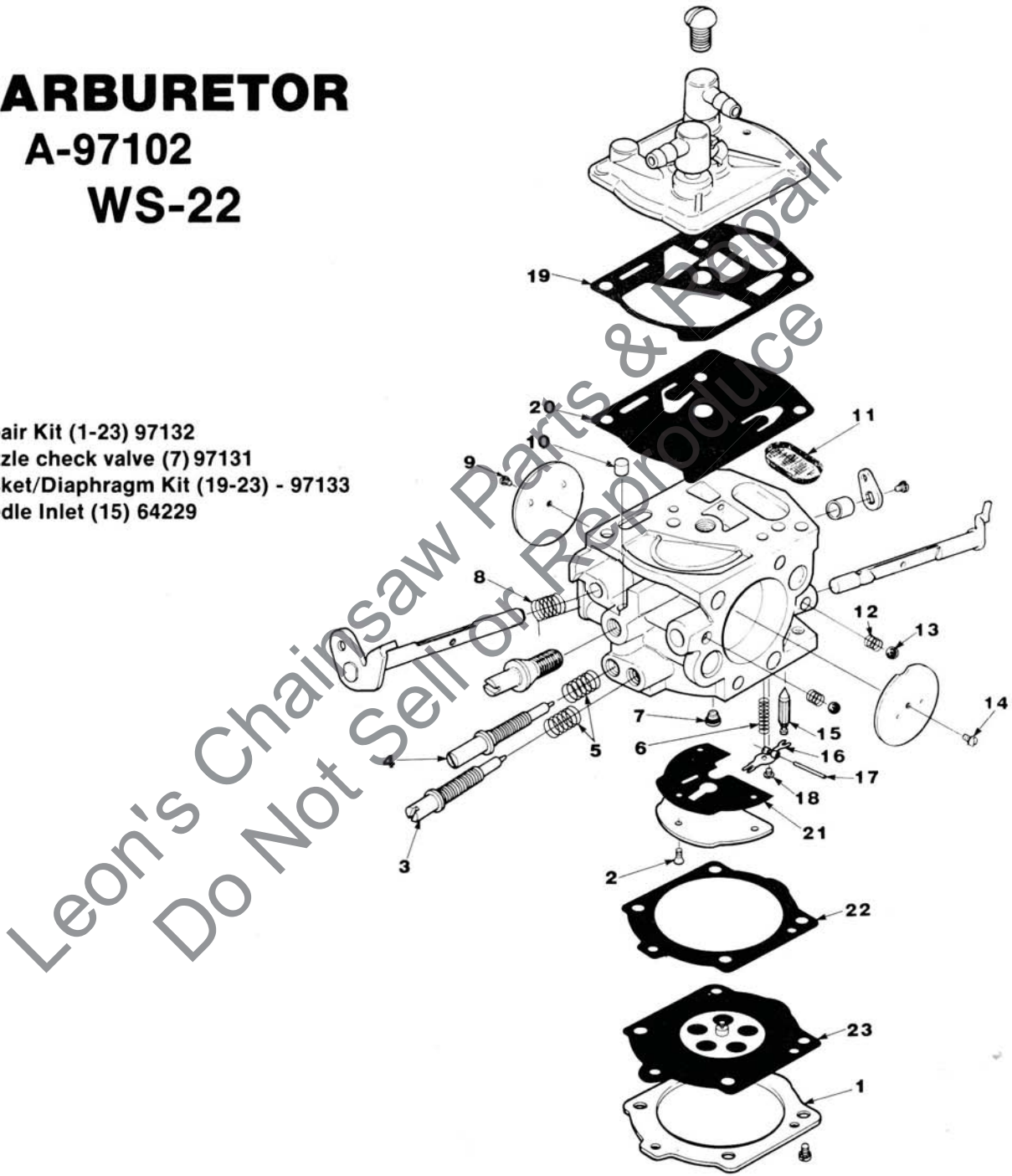
FIGURE 5

CARBURETOR

A-97102

WS-22

- Repair Kit (1-23) 97132
- Nozzle check valve (7) 97131
- Gasket/Diaphragm Kit (19-23) - 97133
- Needle Inlet (15) 64229



ACCESSORIES & TOOLS

WRENCH- Combination	A-24284-A	COMPOUND- Thread locking	23488-C
SILASTIC	24823	BIT- Driver torx (isolator pin)	
TUBING- Rubber 10' (fuel & oil)	93112-99	1/4 shank	24982-01
TUBING- Rubber 10' (pulse line)	93157-99	BIT- Driver torx (isolator pin)	
PAINT- Red	23475	5/16 shank	24982-02
PULLER- Rotor	A-17106-B	KIT- Winter	A-96708
Includes:		Includes:	
STUD- Hex hd.	17108	GROMMET	93357
SCREW- Hex hd.	80627	CLIP- Spring	96200
RING- Retaining	93972	SPACER- Long bearing tool	97790
WRENCH- Spanner	A-17146	SPACER- Short bearing tool	97791
BIT- Driver torx (clutch cover)		ANVIL- Bearing installation	23846-4
1/4 shank	17115-01	TOOL- Needle bearing (plug)	23756
BIT- Driver torx (clutch cover)		TOOL KIT- Carburetor repair	17789
5/16 shank	17115-02	Ignition Test Spark Plug	JA-31316-4
SHIM- Air gap (black)	24306		

HOMELITE DIVISION OF TEXTRON INC.

14401 Carowinds Boulevard
P.O. Box 7047

Charlotte, North Carolina 28217

Leon's Chainsaw Parts & Repair
Do Not Sell or Reproduce

2586RY

HOMELITE **TEXTRON**

Homelite Division of Textron Inc.