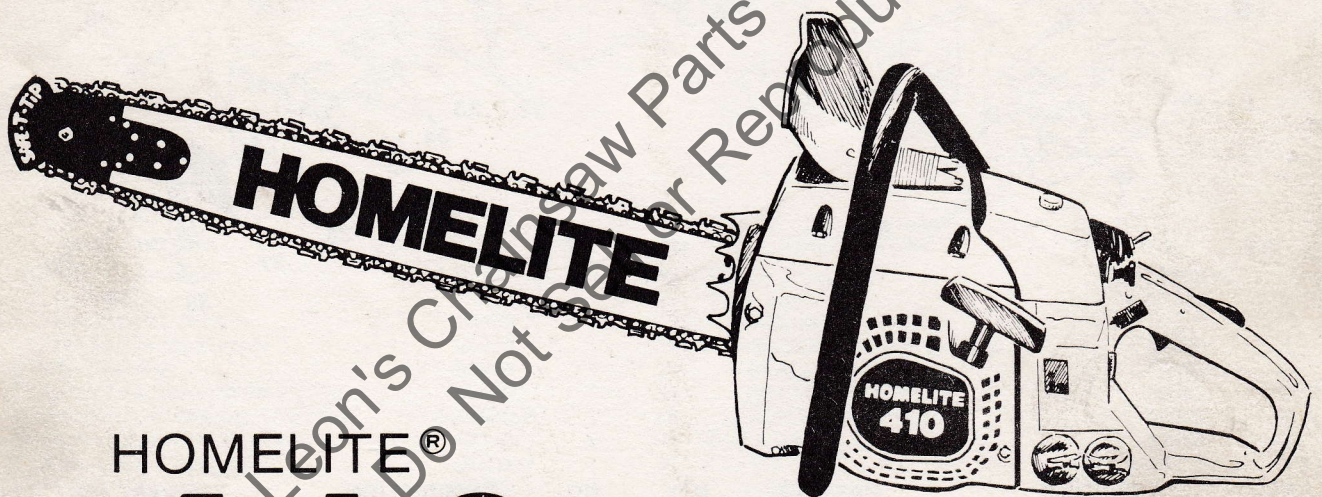


PART NO. 17598 Rev. 1
Printed in U.S.A.
Price 35¢

PARTS LIST



HOMELITE®

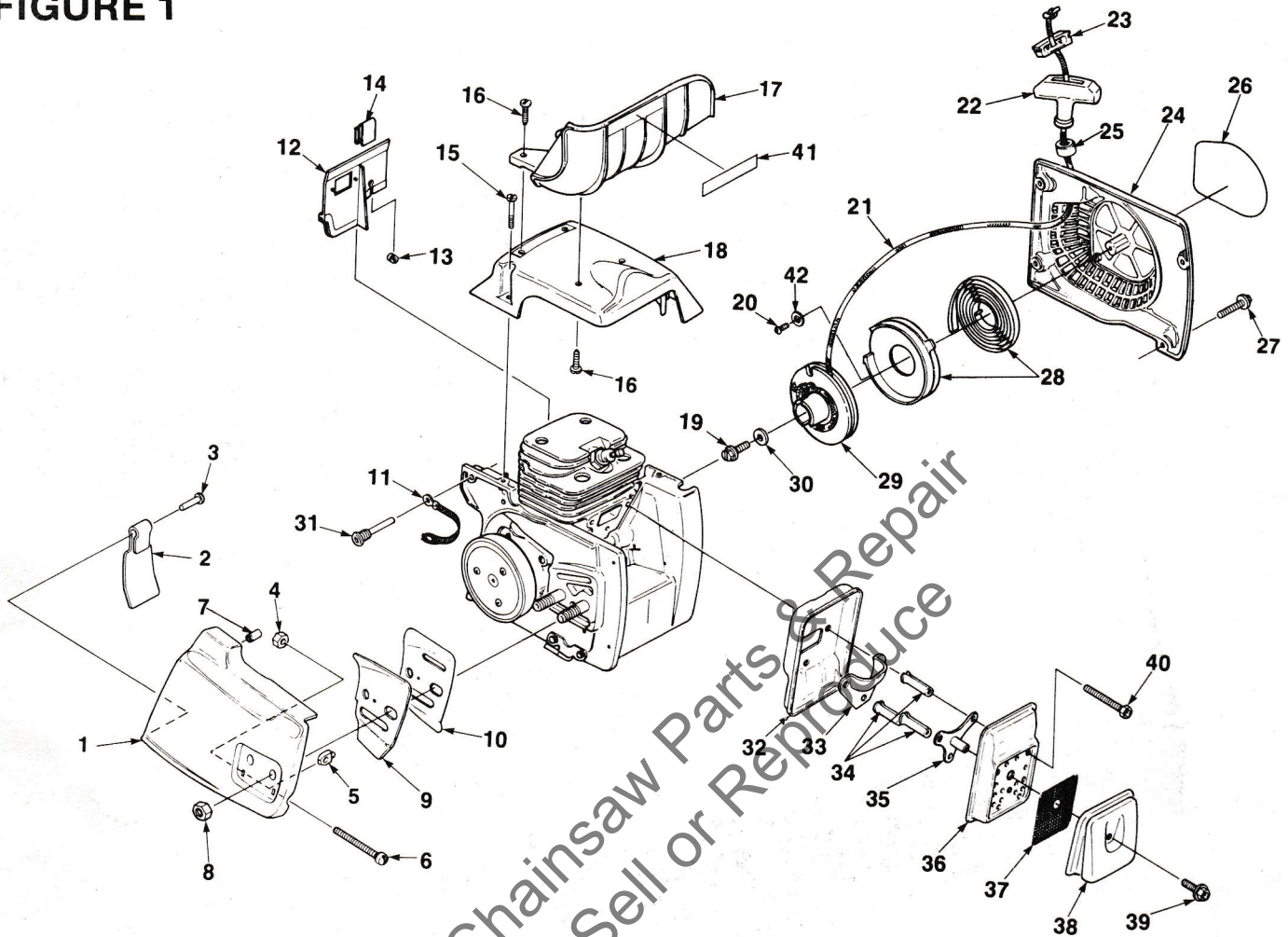
410 Chain Saw

HOMELITE **TEXTRON**

Homelite Division of Textron Inc.

410 CHAIN SAW

FIGURE 1

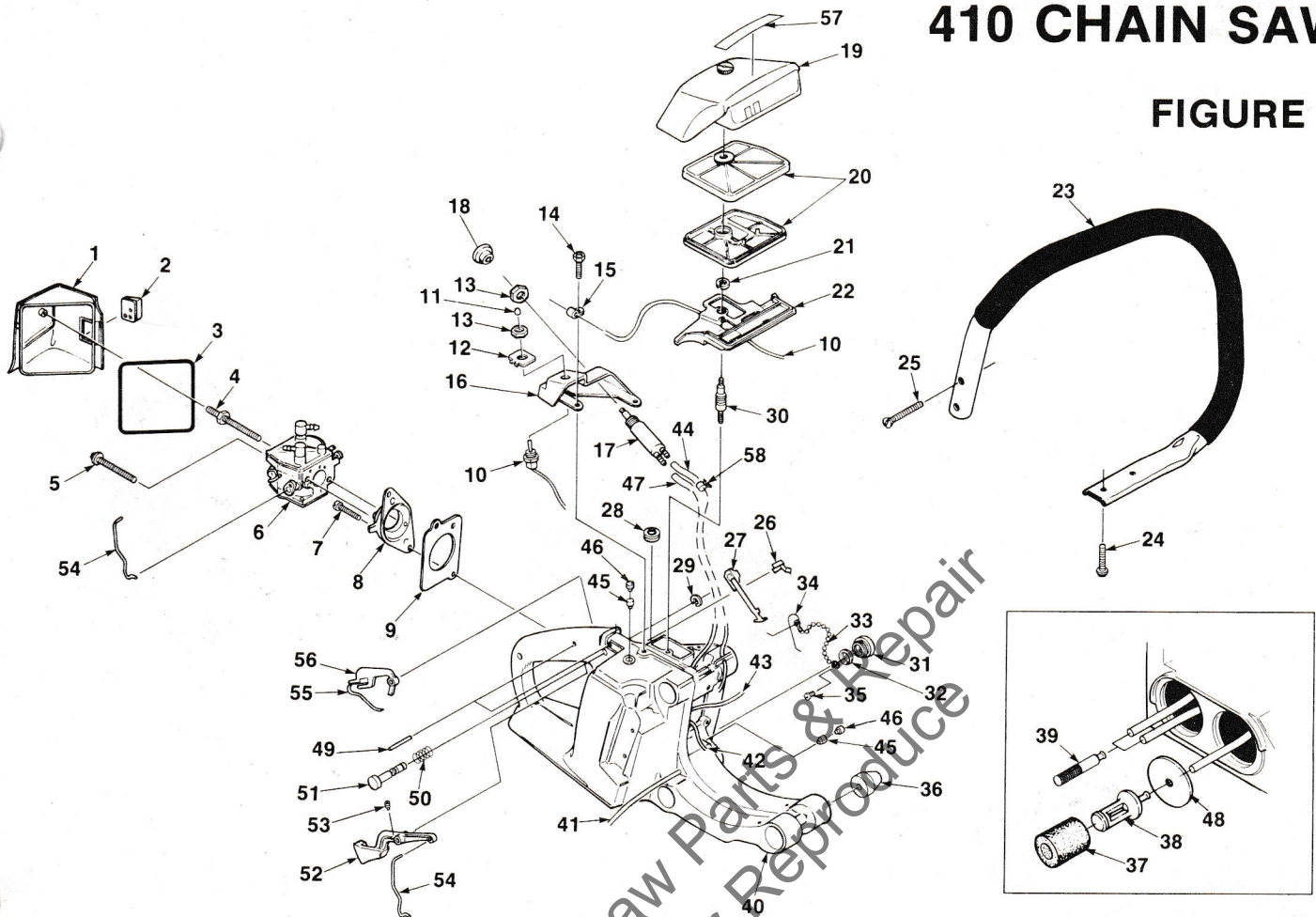


Leon's Chainsaw Parts & Repair
Do Not Sell or Reproduce

NO.	DESCRIPTION	PART NO.	QTY.	NO.	DESCRIPTION	PART NO.	QTY.
1	COVER- Drivecase Includes:	A-96500	1	22	GRIP- Starter rope Includes:	A-69962-B	1
2	SHIELD- Sawdust	93439	1	23	INSERT- Rope retaining	70018-A	1
3	RIVET- Pan Hd.	85154	1	24	HOUSING- Starter Includes:	A-93168-A	1
4	NUT- Hex 1/4-20	81204	1	25	BUSHING	67177	1
5	PIN- Guide bar adj.	93039	1	26	DECAL- "410"	93415-A	1
6	SCREW- Guide bar adj.	63367	1	27	SCREW- Hex Sems 10-24 x 5/8	82298	4
7	BUSHING	95839	1	28	SPRING- Rewind	A-93370	1
8	NUT- 3/8-16	81089-2	1	29	STARTER PULLEY & CUP	A-93359	1
9	PLATE- Guide bar (outer) 410 only	70400	1	30	WASHER- Retaining	58763	1
10	PLATE- Guide bar (inner)	70399	1	31	PIN- Isolator	93367	6
11	STRAP- Ground	A-93459-A	1	32	BODY- Muffler	93347	1
12	DEFLECTOR- Air Includes:	A-96866	1	33	PLATE- Stiffner	93349	1
13	GROMMET	93357	1	34	SPACER- Muffler	93983-03	3
14	SPRING- Clip	96200	1	35	SPACER & PLATE	A-93353	1
15	SCREW- Cylinder cover 8-32 x 7/8	93397	3	36	COVER- Muffler	93348-1A	1
16	SCREW- Threaded rolling plastite #10 x 5/8	82312	4	37	SCREEN- Spark	93344	1
17	GUARD- Hand	93465	1	38	CAP- Muffler exhaust	A-93355-A	1
18	COVER- Cylinder (410 only)	93163	1	39	SCREW- Hex sems 8-32 x .375	88041	1
19	SCREW- #10 x .625	93417	1	40	SCREW- Hex hd 12-24 x 1 7/8	94129	3
20	SCREW- Plastite 6 x 1/4	82215	1	41	LABEL- Homelite	96479	1
21	ROPE- Starter #5 45"	93418	1	42	WASHER- Flat	84025	1

410 CHAIN SAW

FIGURE 2

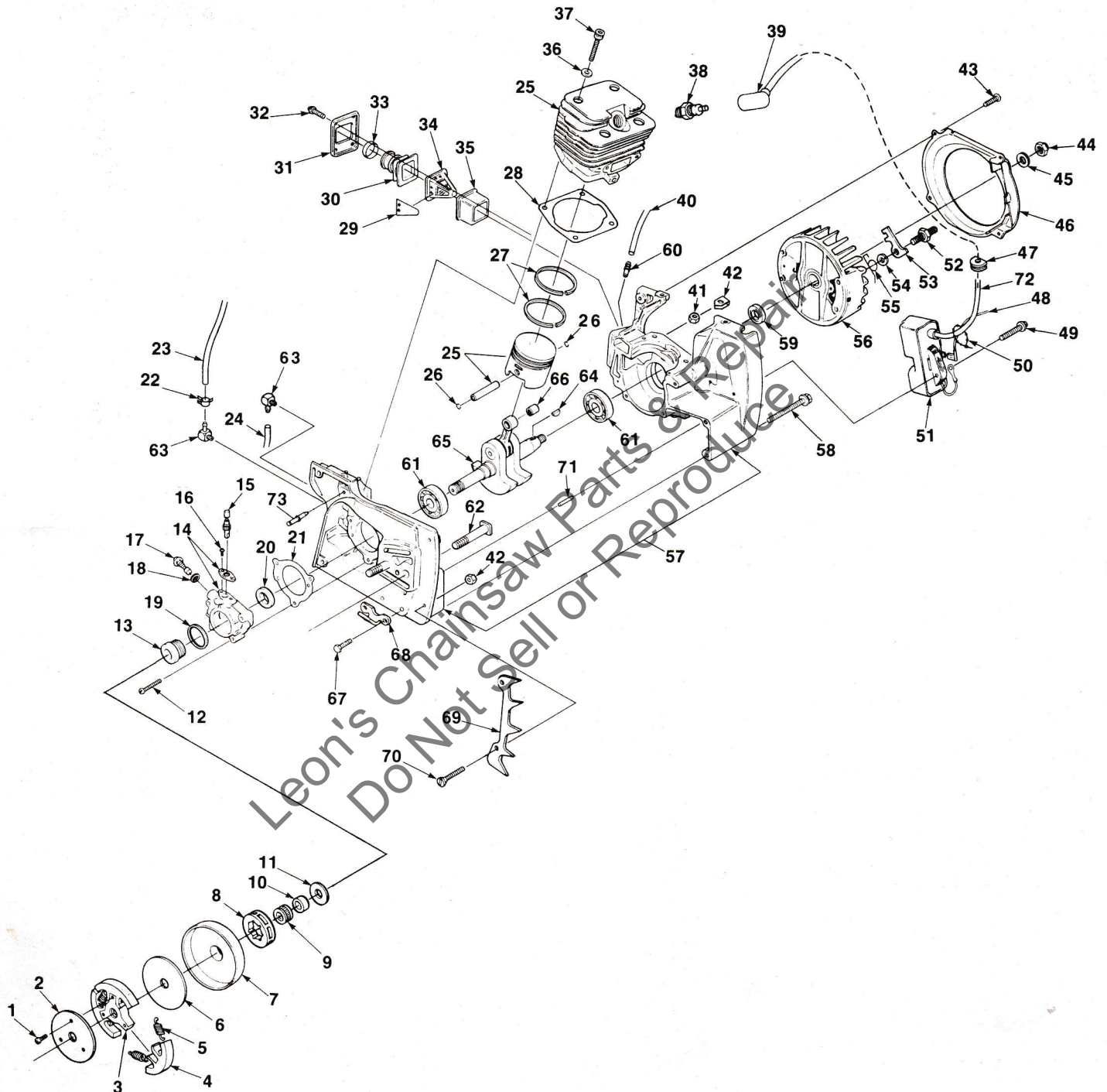


NO.	DESCRIPTION	PART NO.	QTY.	NO.	DESCRIPTION	PART NO.	QTY.
1	COVER- Carburetor	A-93461		30	STUD- Threaded	93382-A	1
	Includes:			31	CAP- Fuel & Oil	A-93420	2
2	GROMMET (Hi-lo)	93470	1		Includes:		
3	GASKET- Carburetor	93424	1	32	GASKET- Fuel & Oil Cap	93420	2
4	STUD- Shoulder	93468	1	33	BEAD- Chain	69502	2
5	SCREW- Hex sems 10-24 x 1 7/8	93480	1	34	RETAINER- Filler cap	69503	2
6	CARBURETOR (Walbro WS-21A)	A-96912-A	1	35	SCREW- Plastite	82256	2
7	SCREW- Soc hd 10-24 x 1/2	82245	2	36	ISOLATOR	93368	6
8	PLATE- Carburetor	93306-1	1	37	FILTER- Fuel	A-59251	1
9	SPACER- Carburetor	93461	1		Includes:		
10	SWITCH & LEAD	A-96910-A	1	38	FILTER- Fuel	59253-1	1
	Includes:			39	FILTER- Oil	A-59009-A	2
11	SLEEVE	96092	1	40	HOUSING- Engine	A-93446-A	1
12	PLATE- Indicating	93388	1		Includes:		
13	NUT- Toggle switch	72084-A1	3	41	TUBING- 6 3/4" (auto pick up)	93112-23	1
14	SCREW- Hex sems hd 10-24 x 1/2	88042	2	42	TUBING- 4 3/4" (pulse line)	93157-19	1
15	CLAMP- Wire	96717	1	43	TUBING- 8 3/4" (fuel line pick up)	93112-32	1
16	PANEL- Rear	93215-1	1	44	TUBING- 5" (Man. delivery)	93112-20	1
17	PUMP- Manual oil	A-96976	1	45	VALVE- Check	69451	2
	Includes:			46	FILTER (Note 1) 11/32"	93410	1
18	BUTTON	65084	1	47	TUBING 9 3/4" (man. pick up)	93112-36	1
19	COVER- Air filter	A-93402	1	48	WASHER- Plastic	96589	1
20	FILTER- Air	A-93401	1	49	PIN- Trigger	68548	2
21	RING- Retaining	93389	1	50	SPRING- Compression	93376	1
22	SUPPORT- Filter cover	93364	1	51	PIN- Throttle lock	93375	1
23	HANDLE BAR (Flush cut)	A-93409	1	52	TRIGGER	A-93374	1
	KIT- Handle bar (wrap around) opt.	A-96605-A	1		Includes:		
	Includes:			53	SCREW- Set 6-32 x 1/4	82373	1
	BUSHING	93428	1	54	ROD- Throttle	93371	1
	BRACKET	93427	1	55	SPRING- Flat	93386	1
	SCREW- Oval hd. 10-24	82429	2	56	LOCK- Trigger	93385	1
24	SCREW- Hex sems 10-24 x .625	88050	2	57	LABEL- Warning	96731	1
25	SCREW- 10-24 x 1 1/4	82389	2	58	CLAMP	93426	1
26	RETAINER- Choke	93381	1				
27	ROD- Choke	93372	1				
28	BOOT- Throttle rod	69889	1				
29	RING- Retaining	93377	1				

NOTE 1: Units with A-93446 Engine housing are to use 69454 filter prior to Lot #215.

410 CHAIN SAW

FIGURE 3



410 CHAIN SAW

FIGURE 3

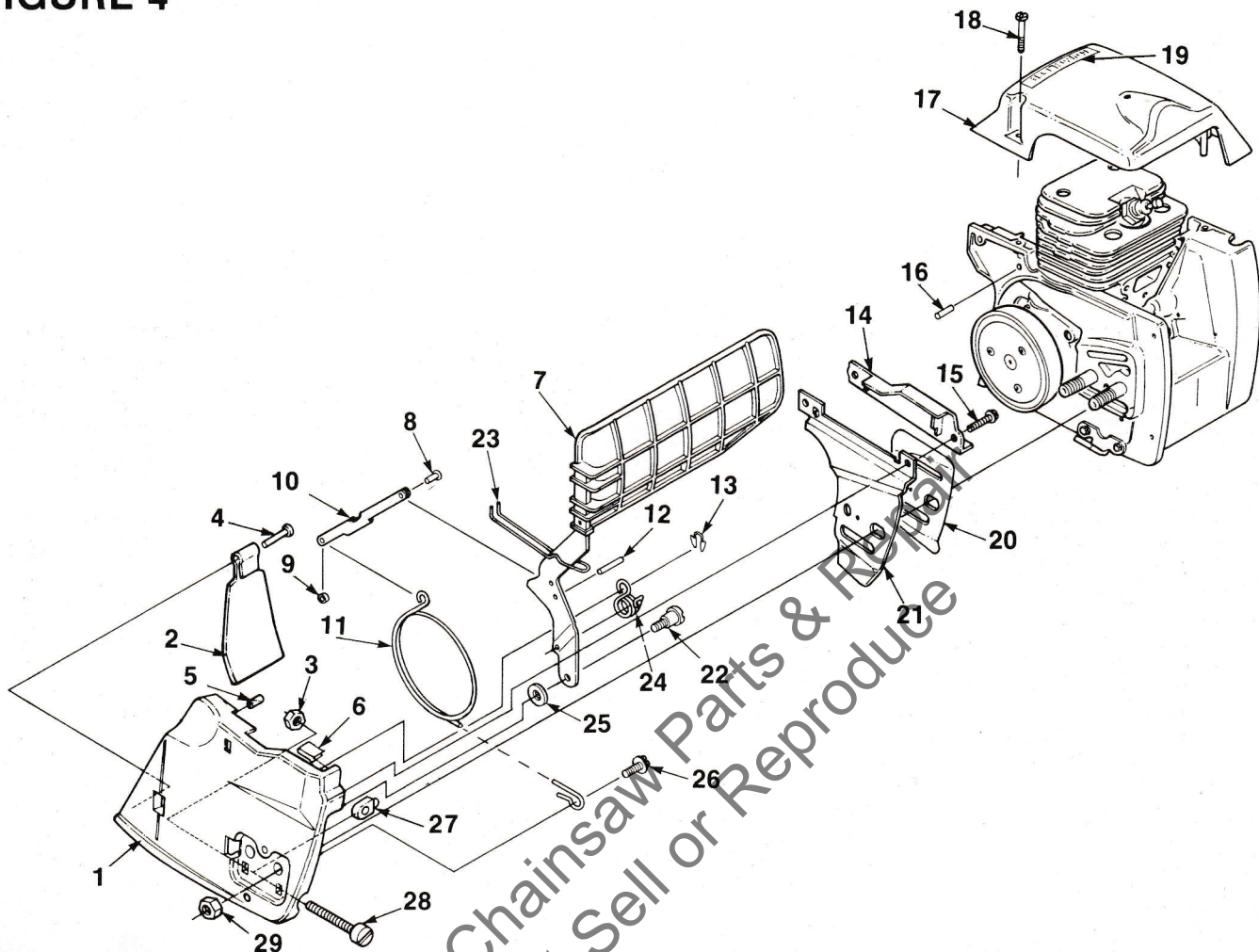
NO.	DESCRIPTION	PART NO.	QTY.	NO.	DESCRIPTION	PART NO.	QTY.
1	SCREW- Torx	93126	3	42	RETAINER- Nut	12689-A	2
2	COVER- Clutch	93628	1	43	SCREW- Pan hd 6-32 x 3/8	82251	4
3	SPIDER- Clutch	93639	1	44	NUT- Lock 3/8-24	81255	1
4	SHOE- Clutch	A-93632-A	3	45	WASHER- Flat	95479-A	1
5	SPRING- Clutch	93814-A	3	46	SCROLL- Air Guide	93312	1
6	WASHER- Thrust	93650	1	47	GROMMET	58318	1
7	DRUM & HUB	A-94302	1	48	SWITCH & LEAD (see Figure 2, index no. 10 for Breakdown)	A-96910-A	1
8	SPROCKET 3/8 pitch 7 tooth SPROCKET & DRUM (spur type- opt. 3/8" 7T) (see Note 2)	63284	1	49	SCREW- Hex sems 10-24 x .875	88052	2
		A-95621	1	50	CLAMP- Wire	50729	1
9	BEARING- Roller	64124	1	51	MODULE	A-93414	1
10	RACE- Inner	64129-A	1	52	STUD	58757-E	2
11	WASHER- Thrust (Note 2)	63462	1	53	PAWL- Starter	58756	2
12	SCREW- Fil. hd 10-24 x 7/8	80660	3	54	WASHER- Lock	70901	2
13	WORM- Oil pump	93336	1	55	SPRING- Starter pawl	65375-2	2
14	PUMP- Automatic oil	A-93319	1	56	ROTOR	93313	1
	Includes:			57	CRANKCASE	A-93441	1
15	GEAR- Plunger & Hel.	93321	1		Includes:		
16	SCREW 4-40 x 1/4	80919	2	58	SCREW- 10-24 x 1.75	88056	5
17	SCREW- Cam	64102-A	1	59	SEAL	12282-A	1
18	GASKET	59736	1	60	FITTING	69833	1
19	SEAL- Felt	59926	1	61	BEARING- Ball	94621	1
20	SEAL	12282-A	1	62	BOLT- Guide bar	93310	2
21	GASKET	93329	1	63	FITTING	70204	2
22	CLAMP	93426	1	64	KEY- Woodruff	75078	1
23	TUBING 5"	93112-20	1	65	CRANKSHAFT	A-93444	1
24	TUBING 6 3/4"	93112-28	1		Includes:		
25	PISTON & CYLINDER (Matched)	A-95060	1	66	BEARING- Needle	93369	1
	Includes:				BEARING- Ball (see index #61)	94621	1
26	RING- Retaining	64813	2	67	SCREW- Hex sems 8-32 x 1/2	88042	2
27	PISTON RING	93216	2	68	STOP- Chain	70705	1
28	GASKET	93338	1	69	KIT- Spike bumper	A-93445	1
29	REED	93325	1		Includes:		
30	CONNECTOR- Carburetor	93327	1	70	SCREW- 10-24 x 1/2"	82415	2
31	RETAINER- Reed valve	93328	1		NUT (see index #42)	81208	2
32	SCREW- Washer hd. 8-32 x 5/8	90582	4	71	PIN- Dowel	31062	2
33	STIFFNER- Connector (for units prior to Lot #C300)	93323	1	72	LEAD- High tension (Note 1)	69326	1
34	SEAT- Reed valve	93324	1	73	PIN- Dowel	96865	1
35	RETAINER- Reed	93326-A	2		NOT SHOWN:		
36	WASHER	12021	4		SAFE-TIP	A-70790-A	1
37	SCREW- Soc hd. 10-24 x 1 1/8	93399	4		Includes:		
38	SPARK PLUG (DJ7Y)	96169-S	1		SCREW	82335	1
39	TERMINAL- Spark plug	A-33055	1				
40	TUBING- 4 3/4"	93157-19	1				
41	NUT- Centerlock 10-24	81208	4				

NOTE 1: Cut replacement lead 69326 to 6".

NOTE 2: When using A-95621 sprocket use 63463 washer.

410 SL CHAIN SAW ONLY

FIGURE 4



NO.	DESCRIPTION	PART NO.	QTY.	NO.	DESCRIPTION	PART NO.	QTY.
1	COVER- Drivecase	A-93494-2	1	15	SCREW- Pan hd.6-32 x 3/8	82251	2
2	SHIELD- Sawdust	93439	1	16	PIN	96865	1
3	NUT- Hex (1/4-20)	81204	1	17	COVER- Cylinder	93163	1
4	RIVET- Pan hd	85154	1	18	SCREW- Cylinder 8-32 x 7/8	93397	3
5	BUSHING	95839	1	19	LABEL- Homelite	96479	1
6	CLIP- Spring	93435	1	20	PLATE- Guide bar	70399	1
7	GUARD- Hand (w/ brake)	A-93485-A	1	21	PLATE- Guide bar (outer)	93481	1
	Includes:			22	SCREW- Shoulder	93492	1
8	RIVET- Truss hd.	93436	1	23	SPRING	93491	1
9	SPACER	93495	1	24	SPRING- Torsion	93489	1
10	LINK- Pivot	93488	1	25	WASHER- Flat	93466	1
11	BAND- Brake	93490	1	26	SCREW- 1/4-20 x 3/8	80136-1	1
12	PIN- Dowel	59751	1	27	PIN- Guide bar adjusting	93039	1
13	RING- Retaining	93464	1	28	SCREW- Guide bar adjusting	63367	1
14	SHIELD	93482	1				

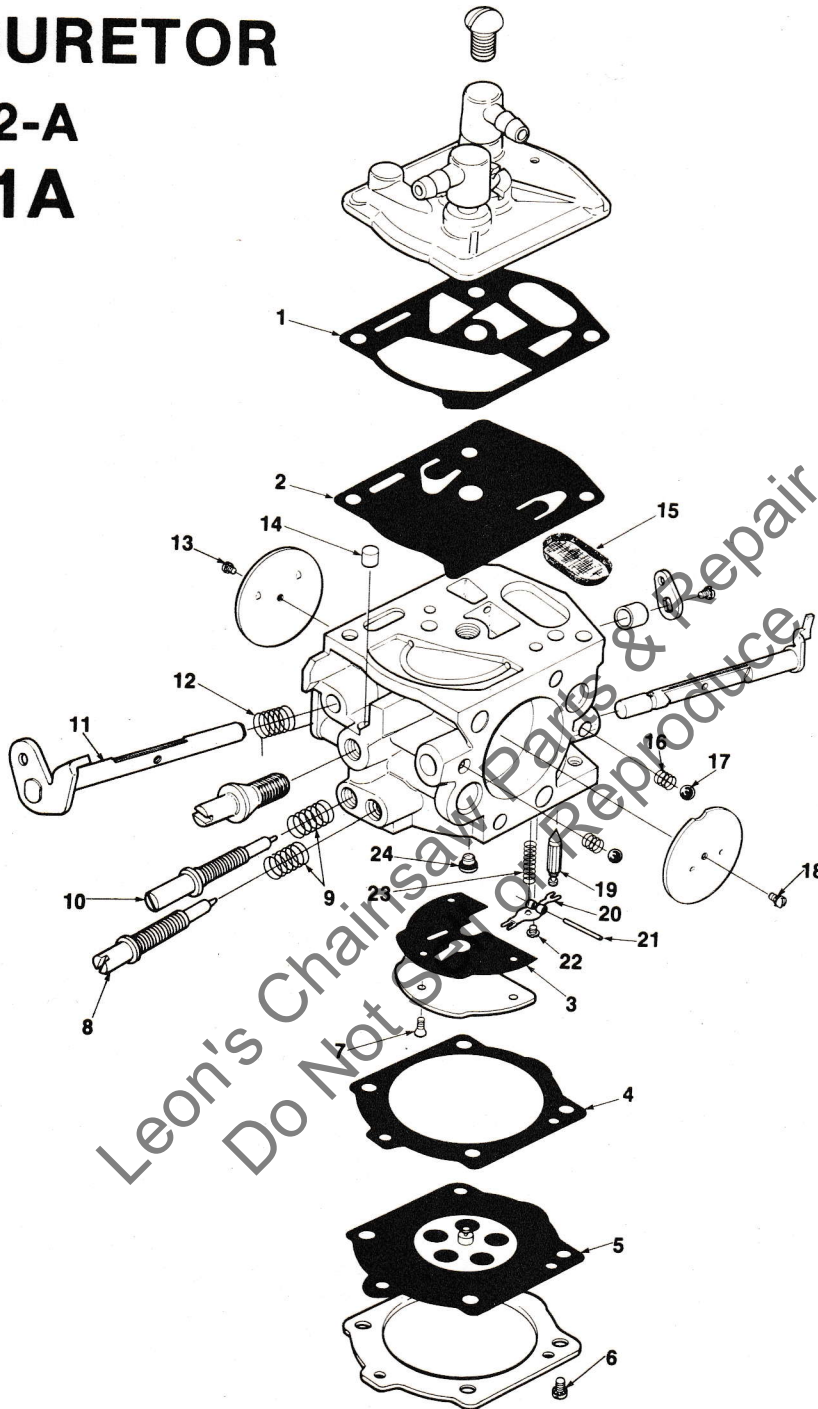
410 CHAIN SAW

FIGURE 5

CARBURETOR

A-96912-A

WS-21A



REPAIR KIT (1-24)

NOZZLE- Check valve (24)

GASKET/DIAPHRAGM KIT (1-5)

NEEDLE INLET (19)

96911

96913

95894

64229

ACCESSORIES & TOOLS

WRENCH- Combination	A-24284
SEALASTIC	24823
TUBING- Rubber 10' (fuel & oil)	93112-99
TUBING- Rubber 10' (pulse line)	93157-99
PAINT- Red	23475
REEL 250' Rope #5	57084-1
PULLER- Rotor	A-17106-B
Includes:	
STUD- Hex hd	17108
SCREW- Hex hd	80627
RING- Retaining	93972
WRENCH- Spanner	A-17146
BIT- Driver torx (clutch cover) 1/4 shank	17115-01
BIT- Driver torx (clutch cover) 5/16 shank	17115-02
SHIM- Air gap (Black)	24306
LOCTITE (242)	24388-B
BIT- Driver torx (isolator pin) 1/4 shank	24982-01
BIT- Driver torx (isolator pin) 5/16 shank	24982-02
KIT- Winter	A-96708
Includes:	
GROMMET	93357
CLIP- Spring	96200
KIT- Chain Brake (410 only)	A-96941
Includes:	
PIN- Dowel	96865

HOMELITE DIVISION OF TEXTRON INC.

P.O. Box 7047
14401 Carowinds Boulevard
Charlotte, N.C. 28217

HOMELITE TEXTRON

Homelite Division of Textron Inc.