

HOMELITE

Chain Saw

SEPT., 1958



Leah's Chainsaw Parts & Repair
Do Not Sell or Reproduce

PARTS LIST



Model 4-20

HOMELITE CHAIN SAW MODEL 4-20

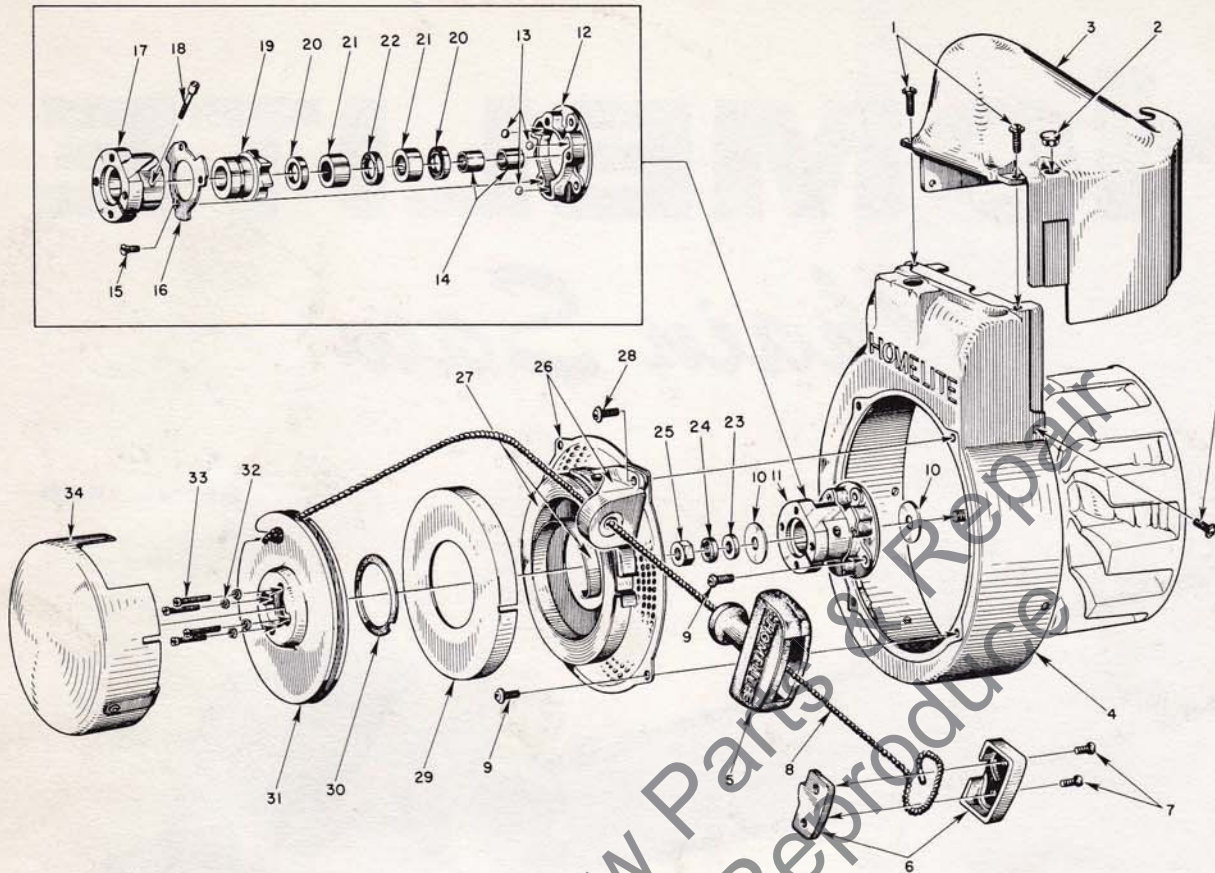


FIGURE 1—RECOIL STARTER PARTS

SEPT. 1958

Index No.	Part No.	Description	No. Required	Index No.	Part No.	Description	No. Required
1	80577	SCREW—8-32 x 3/8 pan hd.	7	19	A-55348	Includes RATCHET—w/washer	1
2	32814	PLUG	1			Includes	
3	55015-B	SHIELD—cylinder	1		55271	WASHER—formica	1
4	AA-55208	SHROUD—air, w/inserts	1	20	55272	SEAL—garlock	2
5	55937	GRIP—starting	1	21	55215	BEARING—needle	2
6	A-56081	INSERT—grip w/cover	1	22	55214	FELT	1
		Includes		23	84067	WASHER—5/16 flat aluminum	1
7	80619	SCREW	2	24	83002	WASHER—5/16 lock	1
8	55898	ROPE—nylon	1	25	81117	NUT—5/16-24 hex jam	1
9	80579	SCREW—10-32 x 3/8 pan hd.	6	26	A-55580	SCREEN—air	1
10	55276	WASHER—thrust	2			Includes	
11	A-56491	BALL DRIVE	1		AA-55222-A	BRACKET w/55363-A bushing	1
		Includes		27	56497	SPRING—recoil	1
12	55054-A	PLATE—ball drive	1	28	80576	SCREW—10-32 x 9/16 pan hd. (through bracket)	1
13	55217	BALL—steel	3	29	71603	COVER—spring housing	1
14	55218	SLEEVE	2	30	71588	SHIM—plastic	as req'd.
15	80588	SCREW—5-40 x 5/16 flat hd.	3	31	55362-1	PULLEY	1
16	55097	RETAINER—ball	1	32	83004	WASHER—# 6 lock	4
17	A-56518	HUB & SCREW	1	33	80475	SCREW—6-32 x 3/4 fil. hd.	4
		Includes		34	AA-73234-1	COVER—pulley	1
18	72295-A	SCREW—hub	1		56187	DECAL—4-20 (for pulley cover)	1
	AA-55213	RATCHET & BEARING	1				

MODIFIED 4-20

Identified by "A" preceding Serial Number

Index No.	Part No.	Description	No. Required
4	A-56006-2	SHROUD - air	1
10	55585	WASHER - thrust	2
14	55584	SLEEVE	2
17	A-57481	HUB & PIN	1
31	55362-2	PULLEY	1

Leon's Chainsaw Parts & Repair
Do Not Sell or Reproduce

—CIT HERE—

MODIFIED 4-20

Identified by "A" preceding Serial Number

Index No.	Part No.	Description	No. Required
1	55994	ROTOR	1
4	A-55877	SWITCH	1
11	55943	ARM - governor	1
15	A-56165-A	BACKPLATE	1

HOMELITE CHAIN SAW MODEL 4-20

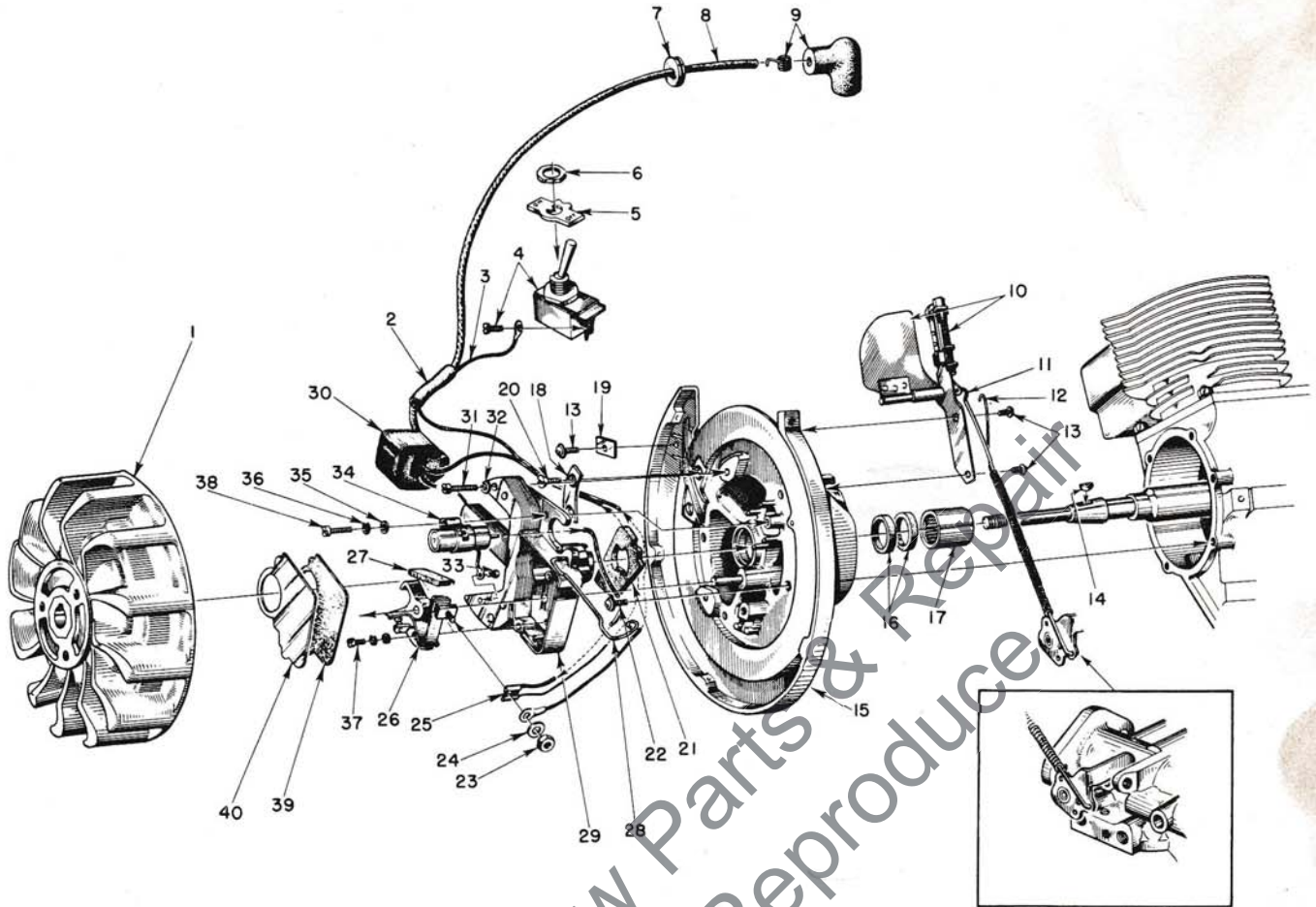


FIGURE 2 — PHELON IGNITION AND GOVERNOR PARTS

SEPT. 1958

Index No.	Part No.	Description	No. Required	Index No.	Part No.	Description	No. Required
1	56214	ROTOR	1	19	55161	CLAMP—outer	1
2	55290	SLEEVE—insulating	1	20	80598	SCREW—6-32 x 5/16 flat hd.	2
3	55990	LEAD—ground	1	21	55989	WASHER—sealing, felt	1
4	AA-72094-A	SWITCH w/ screw	1	22	80576	SCREW—10-32 x 9/16 pan hd.	6
		Includes		23	55982	NUT—terminal	1
5	55879	PLATE (on-off)	1	24	55983	WASHER—terminal	1
6	72084-A1	NUT	1	25	*	TERMINAL—jam-tite	1
7	60929	GROMMET	1	26	A-55971	POINTS—(set)	1
8	55235-A	LEAD—high tension	1	27	55984	WICK—felt	1
9	A-55373	TERMINAL (sparky)	1	28	55980	CLAMP—dust cover	1
10	A-55996	GOVERNOR	1	29	55969	BOX—breaker w/core	1
		Includes		30	55986	COIL	1
	84066	WASHER—governor arm burr	1	31	80660	SCREW—10-24 x 7/8 fil. hd.	2
11	55158	ARM—governor	1	32	83046	WASHER—# 10 lock	3
12	56179	SPRING	1	33	55977	SCREW	1
13	80575	SCREW—8-32 x 1/4 pan hd.	3	34	55987	CONDENSER w/terminal	1
14	75078	KEY—rotor	1	35	84048	WASHER—flat	2
15	A-56079	BACKPLATE w/pivot post	1	36	83060	WASHER—lock	2
		Includes		37	55985	SCREW—8-32 x 3/8 fil. hd.	1
16	71597	SEAL—garlock	2	38	55988	SCREW	1
17	55204	BEARING—needle	1	39	55978-1	GASKET—dust cover	1
18	55962	CLAMP—inner	1	40	55979	COVER—dust	1
	**	TAPE—insulation	1		80595	SCREW—10-24 x 1/2 fil. hd.	1

*Not available separately; replacement coils and condensers supplied with separate terminals.

**Not available separately.

Always furnish saw model and serial number when ordering parts.

HOMELITE CHAIN SAW MODEL 4-20

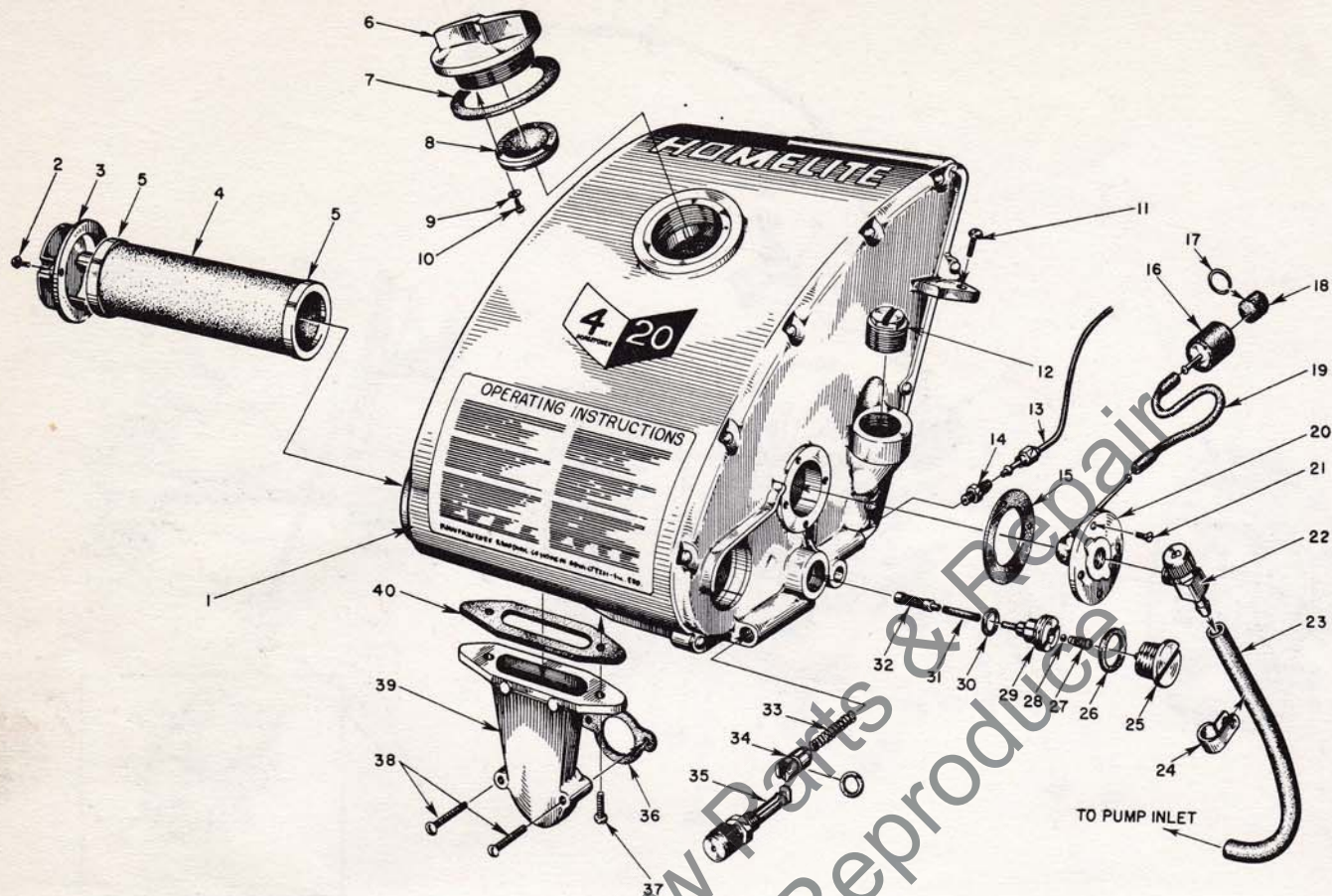


FIGURE 3 — FUEL TANK

SEPT. 1958

Index No.	Part No.	Description	No. Required	Index No.	Part No.	Description	No. Required
	56033	FOILCAL—Homelite	1	16	A-74375	BODY—fuel strainer	1
	56189	FOILCAL—4-20	1			Includes	
	55968	FOILCAL—instructions	1	17	74380	RING—snap	1
1	A-55709	FUEL TANK	1	18	74374	FILTER—felt	1
		Includes		19	72107-A	SLEEVE—flexible	1
2	80571	SCREW—6-32 x 3/8 pan hd.	2	20	AA-72475	FITTING—fuel outlet	1
3	55066-A	CAP—air filter	1	21	80451	SCREW—6-32 x 3/8 flat hd.	4
4	A-55531	FILTER—air	1	22	55738	VALVE—shut-off	1
		Includes		23	A-55801	LINE—fuel	1
5	55530	GASKET (cemented to filter)	2	24	56014	CLIP—fuel line, nylon	1
	55729-1	DECAL—instructions	1	25	AA-55167	CAP—oil supply line	1
	55249	DECAL—Homelite	1	26	55107	GASKET	1
6	A-55305	CAP—fuel	1	27	55288-A	SPRING—check valve	1
		Includes		28	25527	BALL—check	1
7	72173	GASKET	1	29	55109-A	SEAT—check ball	1
8	A-55301-B	VALVE—relief	1	30	55110	GASKET	1
9	83083	WASHER—#3 lock	3	31	55133-A	SLEEVE—flexible	1
10	80592	SCREW—3-48 x 1/4 rd. hd.	3	32	AA-55259-A	PICK-UP—oil	1
11	80582	SCREW—8-32 x 5/8 pan hd.	1	33	71762	SPRING—plunger	1
12	55140-A	CAP—oil filler	1	34	A-74406	TUBE—plunger (includes 74388 "O" ring)...	1
13	AA-55191	LINE—oil	1	35	71764	BUTTON—plunger	1
14	A-55824	VALVE—check	1	36	72971-1	GASKET—air elbow	1
15	72174	GASKET	1	37	80572	SCREW—10-32 x 5/8 pan hd.	2
				38	80638	SCREW—10-32 x 1 1/4" pan hd.	2
				39	55019-2	ADAPTER—air filter	1
				40	55059	GASKET—adapter	1

MODIFIED 4-20

Identified by "A" preceding Serial Number

Index No.	Part No.	Description	No. Required
	56400	DECAL - Homelite	1
	56189-A	DECAL - 4-20	1
1	A-55568-A	FUEL TANK	1
3	55066-B	CAP - air filter	1
4	57172	FILTER - air	1
5	57173	GASKET	1
6	A-56908	CAP - fuel	1
16	A-56200	STRAINER	1
17	56196	RING - rubber	1
23	A-56379	LINE - fuel	1
39	55019-3	ADAPTER	1

MODIFIED 4-20

Identified by "A" preceding Serial Number

Index No.	Part No.	Description	No. Required
24	55104-1	SHIELD	1
Add: -	56014	CLIP - fuel line	1
	29187	PLUG - button (carb. shield)	1

HOMELITE CHAIN SAW MODEL 4-20

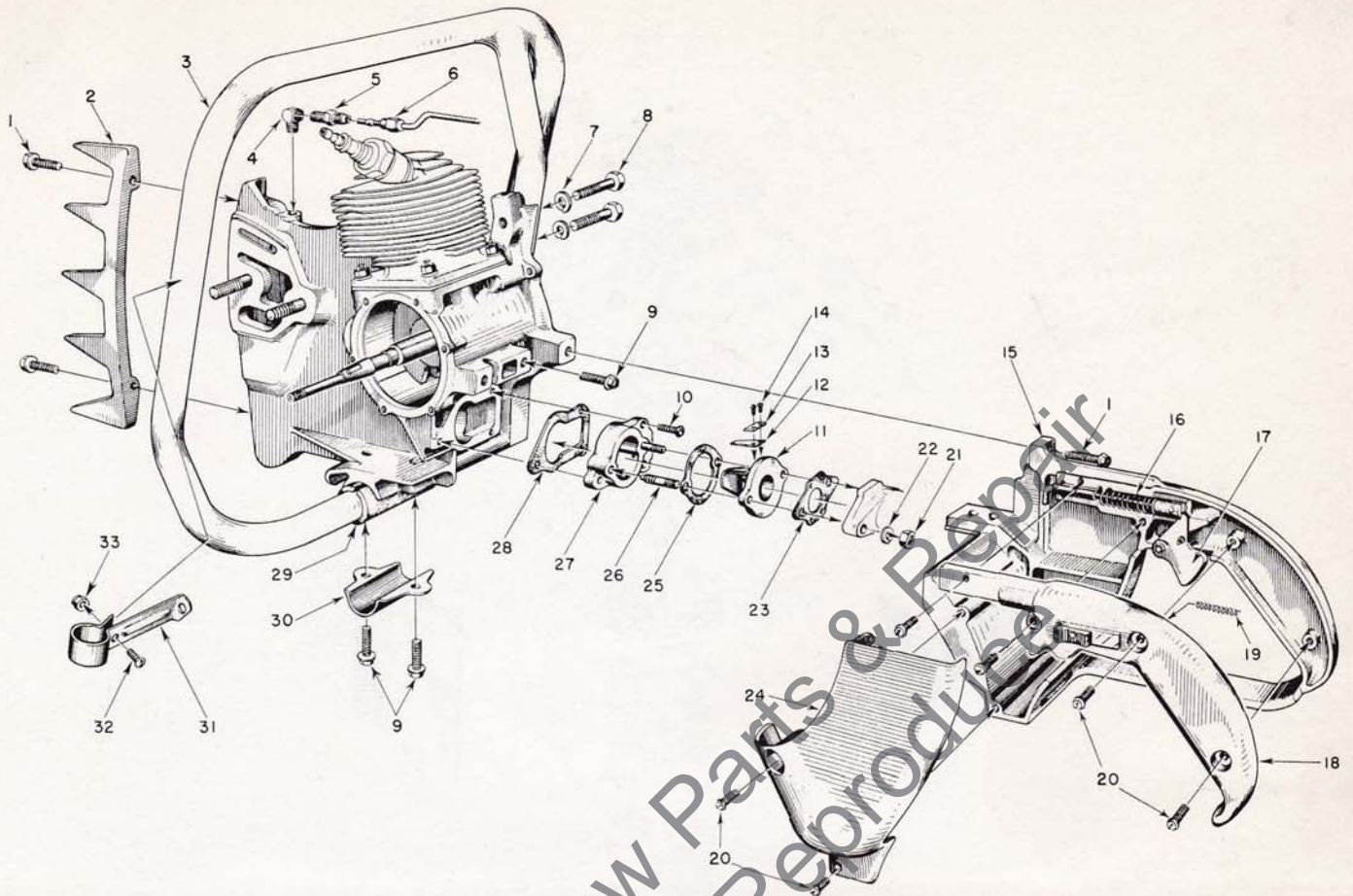


FIGURE 4 — HANDLE, GRIP AND REED VALVE PARTS

SEPT. 1958

Index No.	Part No.	Description	No. Required	Index No.	Part No.	Description	No. Required
1	80573	SCREW— $\frac{1}{4}$ -20 x $\frac{13}{16}$ x hex hd.	5	17	AA-55207	TRIGGER—throttle	1
2	55103	PLATE—bumper	1	18	AA-55228	COVER—pistol grip	1
3	A-55518	HANDLE—wrap-around (4-20A)	1		AA-55282	LOCK—throttle	1
		Includes				Includes	
	80308	SCREW— $\frac{5}{16}$ -18 x 1 Allen	1	19	72970	SPRING—lock	1
	AA-55119	HANDLE—flush-cut (4-20)	1	20	80560	SCREW—8-32 x $\frac{1}{2}$ pan hd.	7
4	31734	ELBOW—connector	1	21	81013	NUT— $\frac{1}{4}$ -20 hex	2
5	31733-1	ADAPTER—straight	1	22	83009	WASHER— $\frac{1}{4}$ lock	2
6	AA-55191	LINE—chain oil	1	23	55553	GASKET—carburetor	1
7	83003	WASHER— $\frac{3}{16}$ lock	2	24	55104	SHIELD—carburetor	1
8	80087	SCREW— $\frac{5}{16}$ -18 x $1\frac{1}{2}$ hex hd.	2	25	55946	GASKET—spacer-adaptor	1
9	80581	SCREW— $\frac{1}{4}$ -20 x $\frac{5}{8}$ hex hd.	4	26	55945	STUD	2
10	80583	SCREW—10-32 x $\frac{3}{4}$ pan hd.	3	27	55933	SPACER—reed adaptor	1
11	55932	ADAPTER—reed valve	1	28	55116	GASKET	1
12	55941	REED	4	29	55146	CUSHION—handle	1
13	55942	PLATE—reed	4	30	55145	CLAMP—handle	1
14	80658	SCREW—4-40 x $\frac{3}{16}$ pan hd.	8	31	A-55740	BRACE—handle	1
15	AA-55281	GRIP—pistol w/pin and 55372 felt	1			Includes	
16	A-55954	ROD—throttle	1	32	80578	SCREW—10-32 x $\frac{7}{16}$	1
		Includes		33	81109	NUT—10-32 lock	1
	55045-A	SPRING	1				

Always furnish saw model and serial number when ordering parts.

HOMELITE CHAIN SAW MODEL 4-20

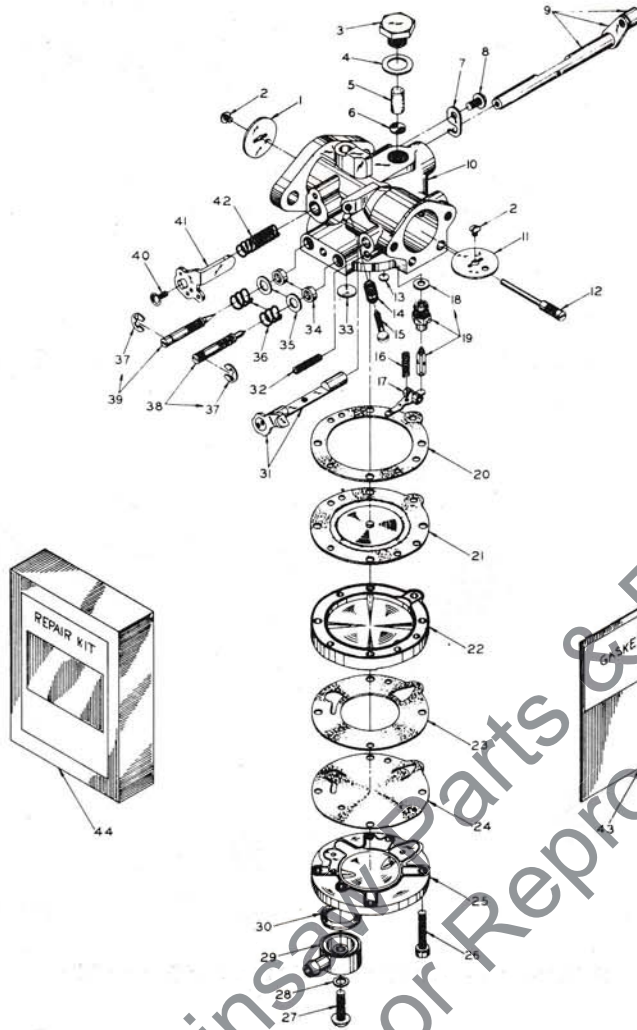


FIGURE 5 — BROWN CARBURETOR MODEL 1-CP

SEPT. 1958

Index No.	Part No.	Description	No. Required
	A-56505	CARBURETOR MODEL 1-CP	1
		Includes	
1	74980	SHUTTER — throttle	1
2	77044	SCREW — shutter, 4-40 x 1/8 rd. hd.	2
3	†77306	SCREW — plug	1
4	*77307	GASKET — plug screw	1
5	†77308	FILTER — felt	1
6	†77317	SCREEN — filter	1
7	†74981	CLIP — throttle shaft	1
8	†77041	SCREW — throttle clip, 6-32 x 1/4 pan hd.	1
9	A-77253	SHAFT — throttle	1
10	A-77321	BODY — service	1
11	74991	SHUTTER — choke	1
12	†77014	PIN — fulcrum	1
13	†77309	PLUG — Welch (main nozzle)	1
14	77010	SPRING — idle speed screw	1
15	77040	SCREW — idle speed, 6-32 x 9/16 rd. hd.	1
16	†77015	SPRING — diaphragm lever tension	1
17	†77016	LEVER — diaphragm	1
18	*77267	GASKET — copper	1
19	†A-77327	NEEDLE & SEAT — inlet w/gasket	1
20	*77303	GASKET — main diaphragm	1
21	*A-77323	DIAPHRAGM — main	1

Index No.	Part No.	Description	No. Required
22	77301	COVER — main diaphragm	1
23	*77305	GASKET — pump body	1
24	*77304	DIAPHRAGM — pump	1
25	77316	BODY — fuel pump	1
26	77160	SCREW — body, 6-32 x 3/4 fl. hd.	4
27	77320	SCREW — fuel connection	1
28	*74997	GASKET — fibre	1
29	77318	TURRET — fuel inlet connection	1
30	*77319	GASKET — inlet connection	1
31	A-77322	SHAFT & LEVER — choke	1
32	77311	SPRING — choke friction	1
33	†74977	PLUG — Welch (large)	1
34	*77007	RING — square	2
35	†77006	WASHER — adjustment packing	2
36	†77005	SPRING — adjustment compression	2
37	77004	CLIP — spring retaining	2
38	†A-77328	SCREW — main adjusting, w/77004 clip....	1
39	†A-77251	SCREW — idle adjusting w/77004 clip....	1
40	†77042	SCREW — idle stop	1
41	77247	LEVER — throttle stop	1
42	†77313	SPRING — throttle friction	1
43	†77336	GASKET Set (GS-152)	1
44	77337	Repair Parts Kit (RK-155)	1

*Included in GS-152 Gasket Set

†Included in RK-155 Repair Kit

NOTE: For field replacement, the Brown 1-CP Carburetor (complete) can be used in all saws listing the Brown 5-CS Carburetor. Use this parts list for parts replacement on Model 1-CP only.

HOMELITE CHAIN SAW MODEL 4-20

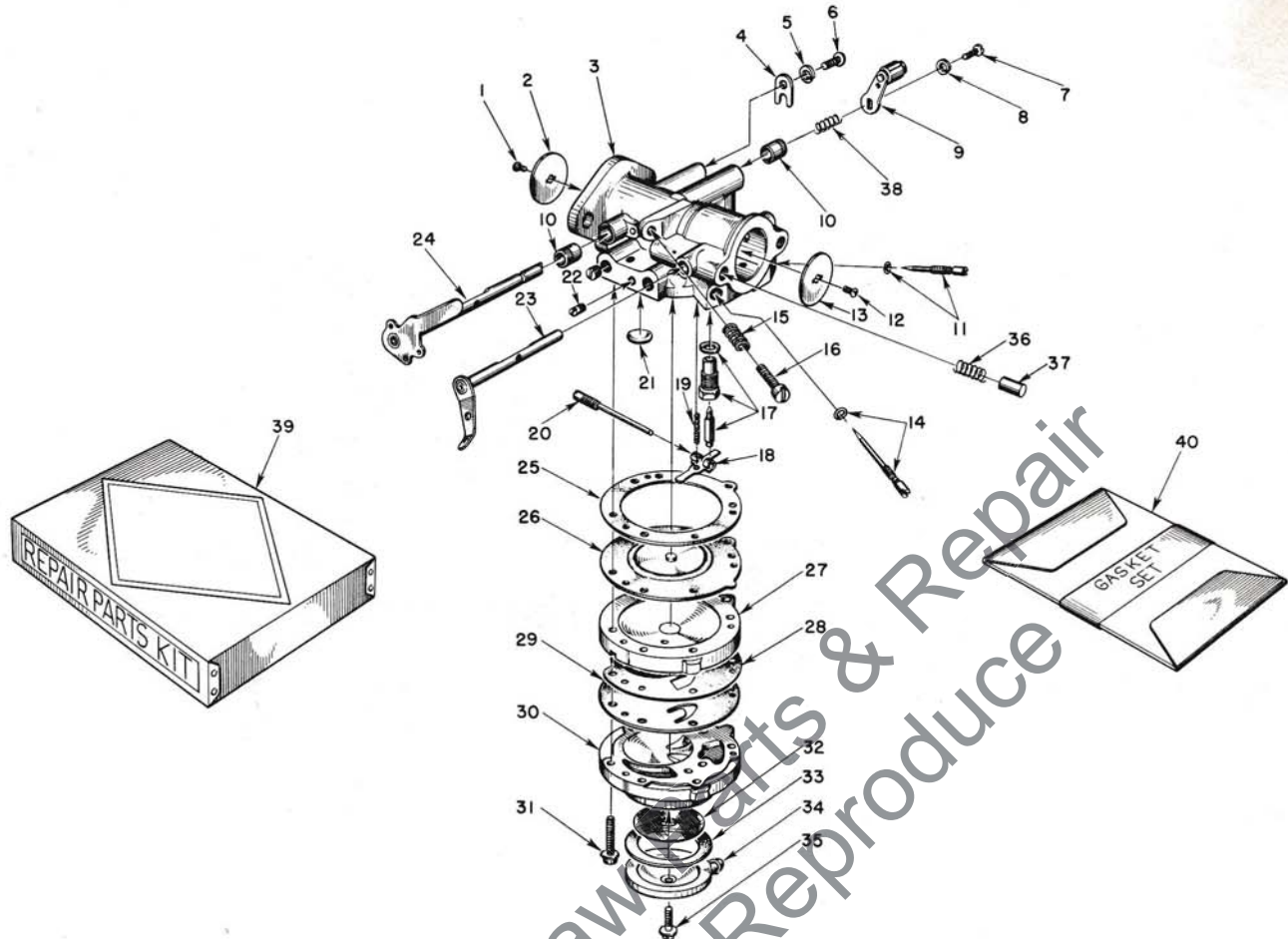


FIGURE 6 — TILLOTSON CARBURETOR PARTS

SEPT. 1958

Index No.	Part No.	Description	No. Required
	A-56066	CARBURETOR—Tilt Model HL-27B	1
		Includes	
1	*80012	SCREW—throttle shutter	1
2	73272	SHUTTER—throttle	1
3	A-75533	BODY—service	1
4	73086	CLIP—throttle shaft	1
5	83000	WASHER—lock #8	1
6	73088	SCREW—8-32 x 5/8 flat hd.	1
7	*71521	SCREW—4-36 x 1/4 rd. hd.	1
8	*83008	WASHER—lock #4	1
9	A-75528	LEVER and ROLLER—throttle	1
10	72812	BUSHING—throttle shaft	2
11	*A-75527	SCREW—main adjust. (hi speed)	1
		Includes	
	55764	"O"—ring	1
12	*80012	SCREW—choke shutter (same as No. 1)	1
13	73263	SHUTTER—choke	1
14	*A-75530	SCREW—idle adjust. (lo speed)	1
		Includes	
	55764	"O"—ring	1
15	*28064	SPRING—idle stop screw	1
16	*71509	SCREW—idle stop (speed control)	1
17	*A-55761	INLET NEEDLE and SEAT	1
		Includes	
	55344	GASKET—inlet seat	1

Index No.	Part No.	Description	No. Required
18	*55747	LEVER—inlet control	1
19	*55759	SPRING—control lever	1
20	*A-55762	SCREW—pinion	1
21	30818	PLUG	1
22	73067	PLUG—drain	1
	71505	PLUG	2
23	A-55766	LEVER—choke	1
24	A-75624	SHAFT—throttle, w/stop lever	1
25	55754	GASKET—main diaphragm	1
26	*A-55760	DIAPHRAGM—main	1
27	55749	COVER—main diaphragm	1
28	55881	GASKET—pump diaphragm	1
29	*55753	DIAPHRAGM—pump	1
30	55748	BODY—pump	1
31	*55316	SCREW and WASHER	6
32	55752	SCREEN—fuel strainer	1
33	55751	GASKET—pump cover	1
34	55750	COVER—pump	1
35	55756	SCREW—retaining	1
36	73264	SPRING—choke friction pin	1
37	71494	PIN—choke friction	1
38	56175	SPRING	1
39	75623	REPAIR PARTS KIT (RK-357)	1
40	*55836	GASKET SET (GS-122)	1

* Included in Repair Parts Kit (RK-357)

HOMELITE CHAIN SAW MODEL 4-20

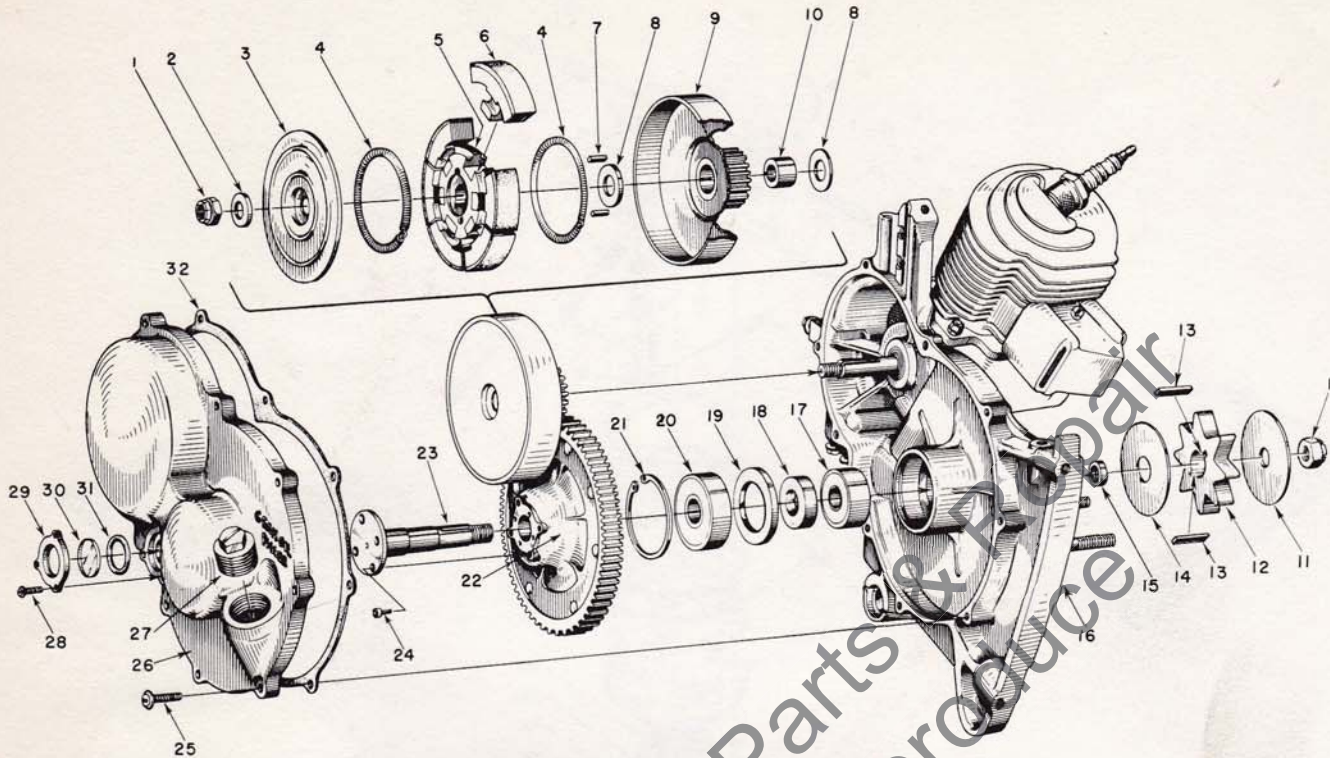


FIGURE 7 — GEAR CASE AND SPROCKET PARTS

SEPT. 1958

Index No.	Part No.	Description	No. Required	Index No.	Part No.	Description	No. Required
1	81116	NUT— $\frac{3}{8}$ -24 flex-lock	2	17	55184	BEARING—ball	1
2	55036	WASHER—clutch	1	18	55024-A	SPACER—bearing	1
3	55126	COVER—clutch	1	19	55025	SHOULDER—spacer	1
	A-55693	CLUTCH	1	20	72040	BEARING—ball	1
		Includes		21	28922	RING—retaining	1
4	55123-A	SPRING	2	22	AA-55068-2	DRIVEN GEAR	1
5	55075	SPIDER	1	23	55005-C	SHAFT—sprocket	1
6	A-55692	SHOE	6	24	80651	SCREW—12-28 x $\frac{3}{8}$ flt hd., socket	4
7	55225	KEY—clutch	2	25	80572	SCREW—10-32 x $\frac{5}{8}$ pan hd.	9
8	55034	WASHER—thrust	2	26	AA-55226-A	COVER—gear case	1
9	AA-55086	CLUTCH DRUM (and drive gear)	1			Includes	
10	55035	BEARING—drive gear	1	27	55140-A	PLUG—oil filler	1
11	55602	WASHER—sprocket (outer)	1	28	80571	SCREW—6-32 x $\frac{3}{8}$ pan hd.	3
12	55593	SPROCKET	1	29	55098	PLATE—window	1
13	55482-1	KEY—sprocket	2	30	55099	WINDOW—plastic	1
14	55601	WASHER—sprocket (inner)	1	31	55100	GASKET—"O" ring	1
15	55586	SPACER—sprocket	1		56188	DECAL	1
16	*	CRANKCASE	1	32	55053-A	GASKET—gearcase cover	1

*A-55598—for breakdown see Figure 7—Engine Assembly.

HOMELITE CHAIN SAW MODEL 4-20

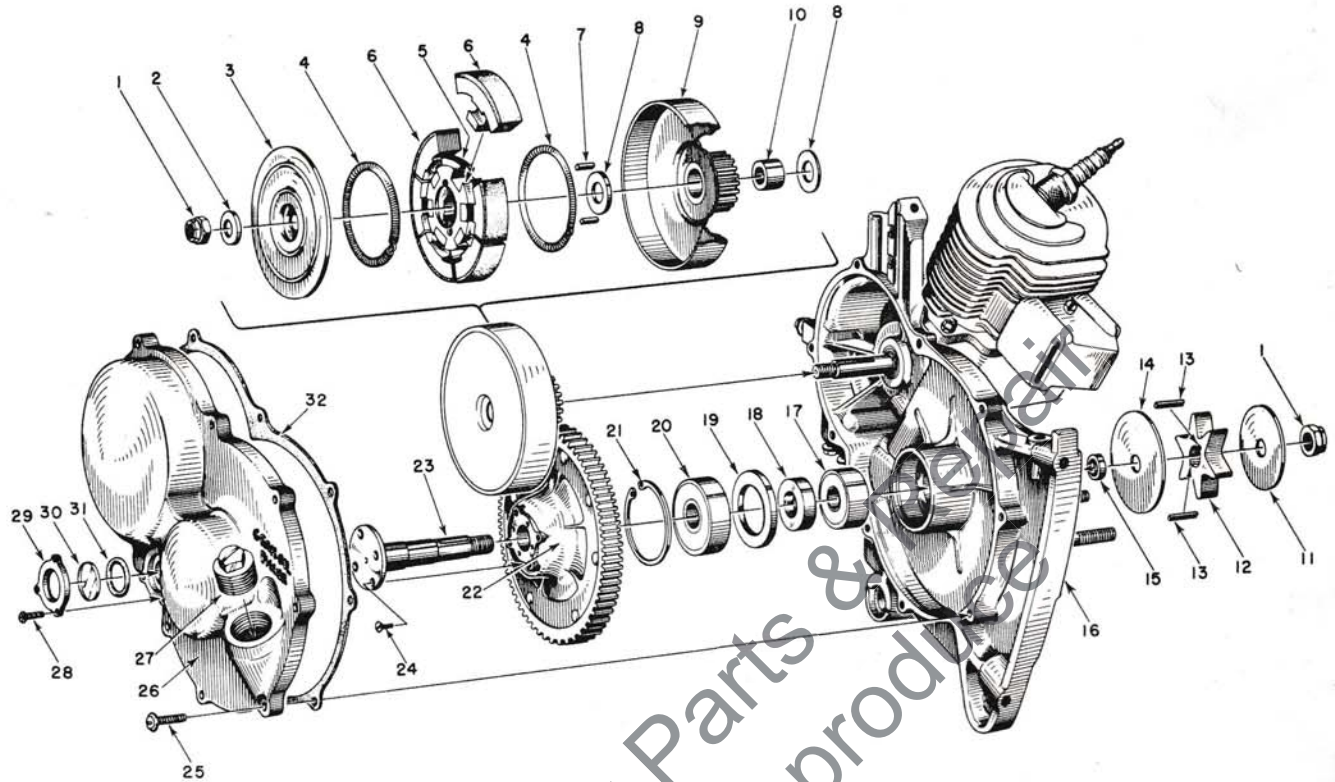


FIGURE 6A — GEAR CASE AND SPROCKET PARTS

**Use This Parts List For Six Tooth Sprocket Equipped Saws

AUGUST 1957

Index No.	Part No.	Description	No. Required	Index No.	Part No.	Description	No. Required
1	81116	NUT— $\frac{3}{8}$ -24 flex-lock	2	17	55184	BEARING—ball	1
2	55036	WASHER—clutch	1	18	55024-A	SPACER—bearing	1
3	55126	COVER—clutch	1	19	55025	SHOULDER—spacer	1
	A-55693	CLUTCH	1	20	72040	BEARING—ball	1
		Includes		21	28922	RING—retaining	1
4	55123-A	SPRING	2	22	AA-55068-2	DRIVEN GEAR	1
5	55075	SPIDER	1	23	55005-C	SHAFT—sprocket	1
6	A-55692	SHOE	6	24	80651	SCREW—12-28 x $\frac{3}{8}$ flt hd., socket	4
7	55225	KEY—clutch	2	25	80572	SCREW—10-32 x $\frac{5}{8}$ pan hd.	9
8	55034	WASHER—thrust	2	26	AA-55226-A	COVER—gear case	1
9	AA-55086	CLUTCH DRUM (and drive gear)	1			Includes	
10	55035	BEARING—drive gear	1	27	55140-A	PLUG—oil filler	1
11	55163	WASHER—sprocket (outer)	1	28	80571	SCREW—6-32 x $\frac{3}{8}$ pan hd.	3
12	**55101-A	SPROCKET—6-tooth	1	29	55098	PLATE—window	1
13	55482-1	KEY—sprocket	2	30	55099	WINDOW—plastic	1
14	55162	WASHER—sprocket (inner)	1	31	55100	GASKET—"O" ring	1
15	55586-A	SPACER—sprocket	1		56188	DECAL	1
16	*	CRANKCASE	1	32	55053-A	GASKET—gearcase cover	1

*A-55598—for breakdown see Figure 7—Engine Assembly.
 **Order Bar and Chain for 6-tooth sprocket from page 10A
 (See Figure 8A.) Clearing and Bow Attachments must use
 8-tooth sprocket shown in Figure 6.

HOMELITE CHAIN SAW MODEL 4-20

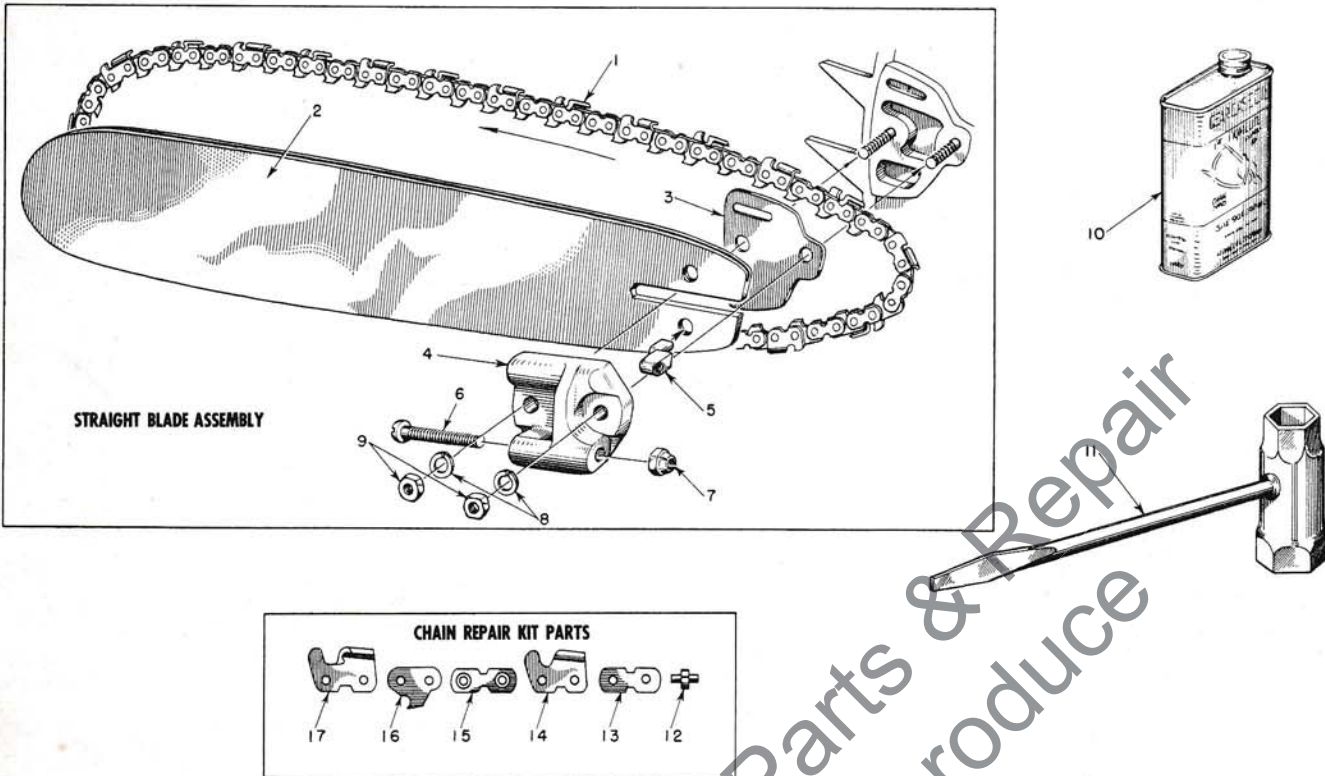


FIGURE 8A — BARS AND CHAINS FOR SIX TOOTH SPROCKET-EQUIPPED SAWS

(See Figure 8 for Bars fitting 8-tooth sprocket saws)

Index No.	Part No.	Description	No. Required	Index No.	Part No.	Description	No. Required
		OREGON #10C 1/2 PITCH CHAIN					
1	A-55338	14" CHAIN—(with kit)	1	3	55128	SHIM	1
	AA-73338	18" CHAIN—(with kit)	1		A-55591	ADJUSTING PLATE	1
	A-55319	20" CHAIN—(with kit)	1			Includes	
	*AA-73340	23" CHAIN—(with kit)	1	4	55551-B	PLATE—adjusting	1
	*AA-73342	28" CHAIN—(with kit)	1	5	55552	PIN—guide bar adjusting	1
	AA-73344	33" CHAIN—(with kit)	1	6	80617	SCREW—3/16-18 x 2 round hd.	1
	AA-73346	38" CHAIN—(with kit)	1	7	81123	NUT—hex lock	1
2	A-55333	14" BAR—track hardened .063	1	8	83018	WASHER—lock	2
	A-55255	18" BAR—track hardened .063	1	9	81089	NUT—3/8-16 hex	2
	AA-55331	20" BAR—track hardened .063	1	10	55291-A	OIL—gear (pint can SAE-90)	1
	A-55256	23" BAR—track hardened .063	1	11	22808	WRENCH—combination	2
	A-55257	28" BAR—track hardened .063	1		AA-73314	REPAIR KIT—OREGON #10C CHAIN	
	55329-1	18" BAR—extra hard tip .063	1			Includes	
	55327-1	23" BAR—extra hard tip .063	1	12		RIVET	4
	55330-1	28" BAR—extra hard tip .063	1	13		LINK—connecting (plain)	2
	55335-1	33" BAR—extra hard tip .063	1	14		CUTTER—left	1
	55336-1	38" BAR—extra hard tip .063	1	15		LINK—connecting (w/rivets)	2
				16		LINK—drive	1
				17		CUTTER—right	1

*Also fits 14" Bow Attachment.

**Also fits Clearing Attachment.

Use 8 tooth sprocket 55593 with clearing attachment and bow attachment.

MODIFIED 4-20

Identified by "A" preceding Serial Number

Index No.	Part No.	Description	No. Required
8	56132	WASHER	2
9	A-56849	CLUTCH DRUM	1
10	56133	BEARING	1
11	56077	WASHER	1
12	55593-2	SPROCKET	1
13	56076-1	KEY	2
14	56074	WASHER	1
15	56071	SPACER	1
18	56072	SEAL	1
20	56219-S	BEARING	1
23	56070	SHAFT - sprocket	1
26	AA-55226-B	COVER - gear case	1

MODIFIED 4-20

Identified by "A" preceding Serial Number

Index No.	Part No.	Description	No. Required
5	A-56613-A	CAP	1
13	56864	GASKET	1
14	* A-57099	CRANKCASE	1
	A-57743	CRANKCASE	1
	When available, will include:		
	57349	STUD - for fuel tank	1
	57350	STUD - for gear case cover	9
16	57051	STUD	1
17	57052	STUD	1
18	56134	SEAL	1
20	56109	RING	1
21	56097-S	BEARING	1
24	57336	CRANKSHAFT	1

* Order this number (A-57099)

After stock of A-57099 is depleted, A-57743 will be supplied automatically.

Leon's Chainsaw Parts & Repair
Do Not Sell or Reproduce

HOMELITE CHAIN SAW MODEL 4-20

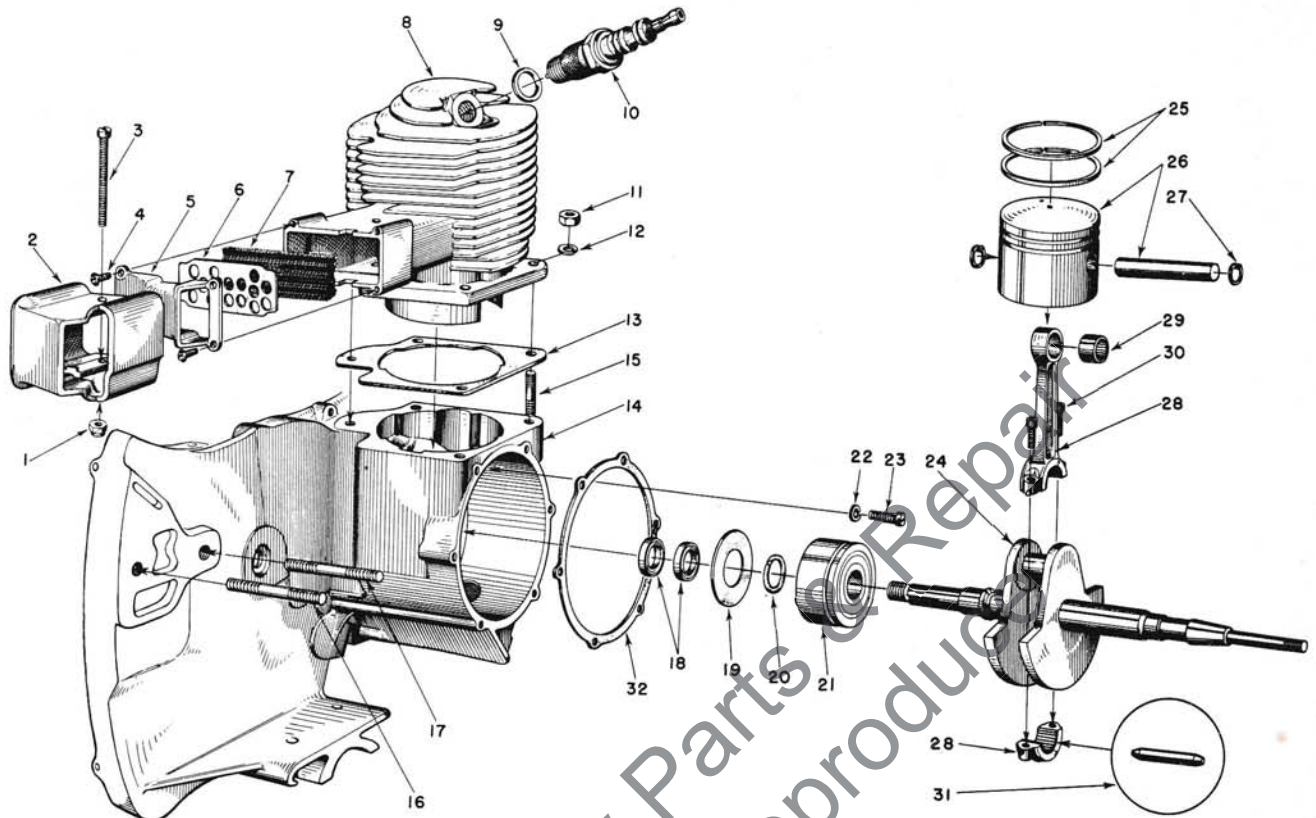


FIGURE B — ENGINE ASSEMBLY

SEPT. 1958

Index No.	Part No.	Description	No. Required
1	81109	NUT—10-32 flex-lock	1
2	55089-1	DAMPER—heat	1
3	80574	SCREW—10-32 x 1 5/8 rd. hd.	1
4	80630	SCREW—6-32 x 1/2 spin-lock	4
5	55090-B	CAP—exhaust	1
6	55295-A	RETAINER—muffler element	1
7	55199	ELEMENT—muffler	1
8	55000-B	CYLINDER	1
9	25038	GASKET—(included with spark plug)	1
10	71530	SPARK PLUG—Champion HO-8A	1
11	81065-2	NUT—1/4-28 hex	4
12	83009	WASHER—1/4 lock	4
13	55050-A	GASKET—cylinder	1
14	A-55598	CRANKCASE	1
		Includes	
15	55871	STUD—cylinder	4
16	55606	STUD—guide bar (long)	1
17	55056-D	STUD—guide bar (short)	1

Index No.	Part No.	Description	No. Required
18	71597	SEAL—garlock	2
19	55048-A	GASKET—crankcase sealing	1
20	55047	RING—retaining (main bearing)	1
21	55193	BEARING—main	1
22	83061	WASHER—lock, spec. thin.	2
23	19238-A	SCREW—main bearing retaining	2
24	55008-B	CRANKSHAFT	1
25	55038	RING—piston	2
26	AA-55279	PISTON and PIN	1
		Includes	
27	55095	RING—piston pin retaining	2
28	AA-55195	CONNECTING ROD	1
		Includes	
29	55196	BEARING—piston pin	1
30	80541	SCREW—8-32 x 1/2 allen cap	2
31	AA-55280	ROLLERS (set of 27)	1
32	55049	GASKET—back plate	1

Always furnish saw model and serial number when ordering parts.

HOMELITE CHAIN SAW MODEL 4-20

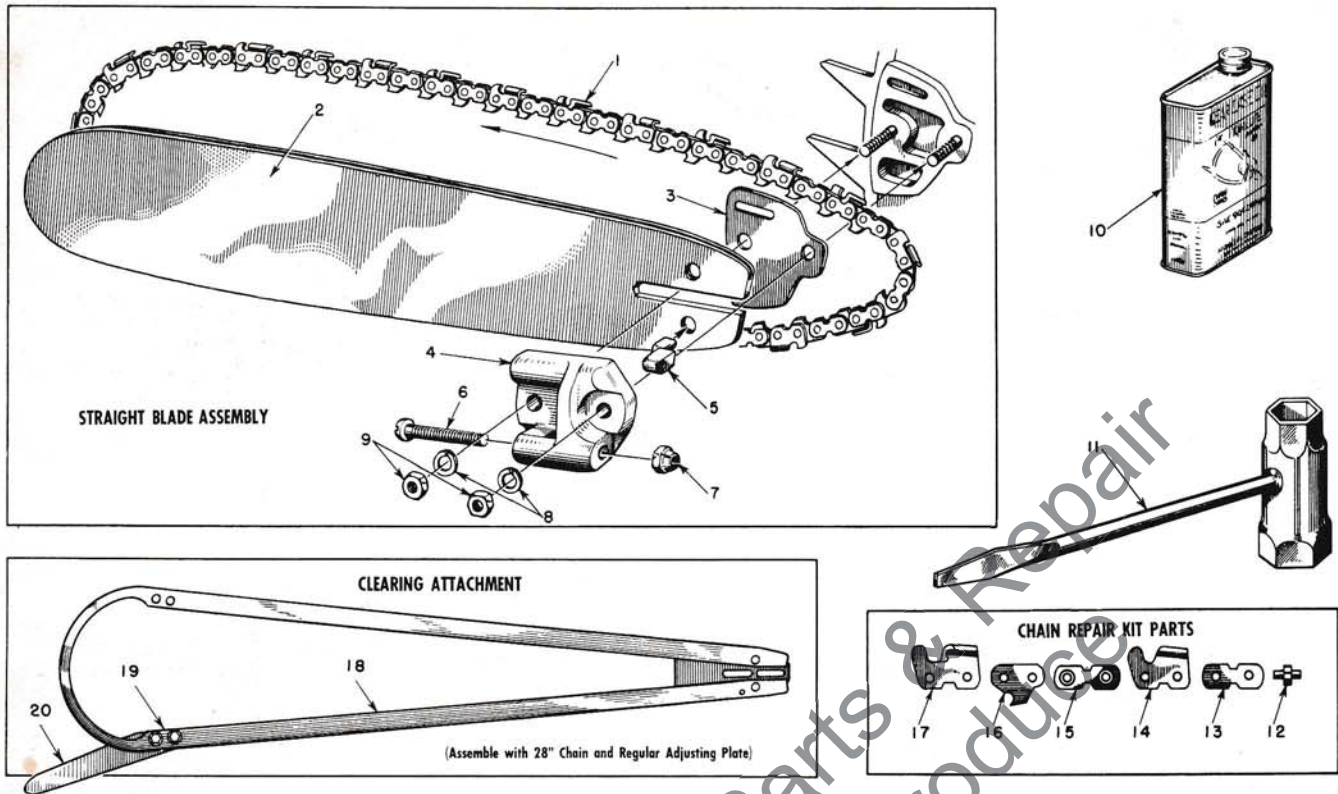


FIGURE 9 — SAW PARTS
SEPT. 1958

Index No.	Part No.	Description	No. Required	Index No.	Part No.	Description	No. Required
		OREGON #10C 1/2 PITCH CHAIN		5	55552	PIN—guide bar adjusting	1
1	A-55338	14" CHAIN—(with kit)	1	6	80617	SCREW—5/16-18 x 2 round hd.	1
	AA-73338	18" CHAIN—(with kit)	1	7	81123	NUT—hex lock	1
	A-55319	20" CHAIN—(with kit)	1	8	83018	WASHER—lock	2
	*AA-73340	23" CHAIN—(with kit)	1	9	81089	NUT—3/8-16 hex	2
	**AA-73342	28" CHAIN—(with kit)	1	10	55291-A	OIL—gear (pint can SAE-90)	1
	AA-73344	33" CHAIN—(with kit)	1	11	22808	WRENCH—combination	2
	AA-73346	38" CHAIN—(with kit)	1		AA-73314	REPAIR KIT—OREGON #10C CHAIN	
2	A-55714	14" BAR—.063	1			Includes	
	A-55718	18" BAR—hard track plus extra hard tip .063	1	12		RIVET	4
	A-55720	20" BAR—hard track plus extra hard tip .063	1	13		LINK—connecting (plain)	2
	A-55723	23" BAR—hard track plus extra hard tip .063	1	14		CUTTER—left	1
	A-55728	28" BAR—hard track plus extra hard tip .063	1	15		LINK—connecting (w/rivets)	2
	55704-1	33" BAR—extra hard tip .063	1	16		LINK—drive	1
	55705-1	38" BAR—extra hard tip .063	1	17		CUTTER—right	1
3	55128	SHIM	1	18	A-56169-A	CLEARING ATTACHMENT	1
	A-55591	ADJUSTING PLATE	1			Includes	
		Includes		19	80604	SCREW—hex hd. 5/16-24 x 3/4	2
4	55551-B	PLATE—adjusting	1	20	73820	SPUR—plunging	1

*Also fits 14" Bow Attachment.
**Also fits Clearing Attachment.

MODIFIED 4-20

Identified by "A" preceding Serial Number

Index No.	Part No.	Description	No. Required
4	56957-A	PLATE	1
13	A-56169-B	CLEARING ATTACHMENT	1

Leon's Chainsaw Parts & Repair
Do Not Sell or Reproduce

-----CUT HERE-----

MODIFIED 4-20

Identified by "A" preceding Serial Number

Index No.	Part No.	Description	No. Required
1	A-56486	16" BOW GUIDE	1

Leon's Chainsaw Parts & Repair
Do Not Sell or Reproduce

HOMELITE CHAIN SAW MODEL 4-20

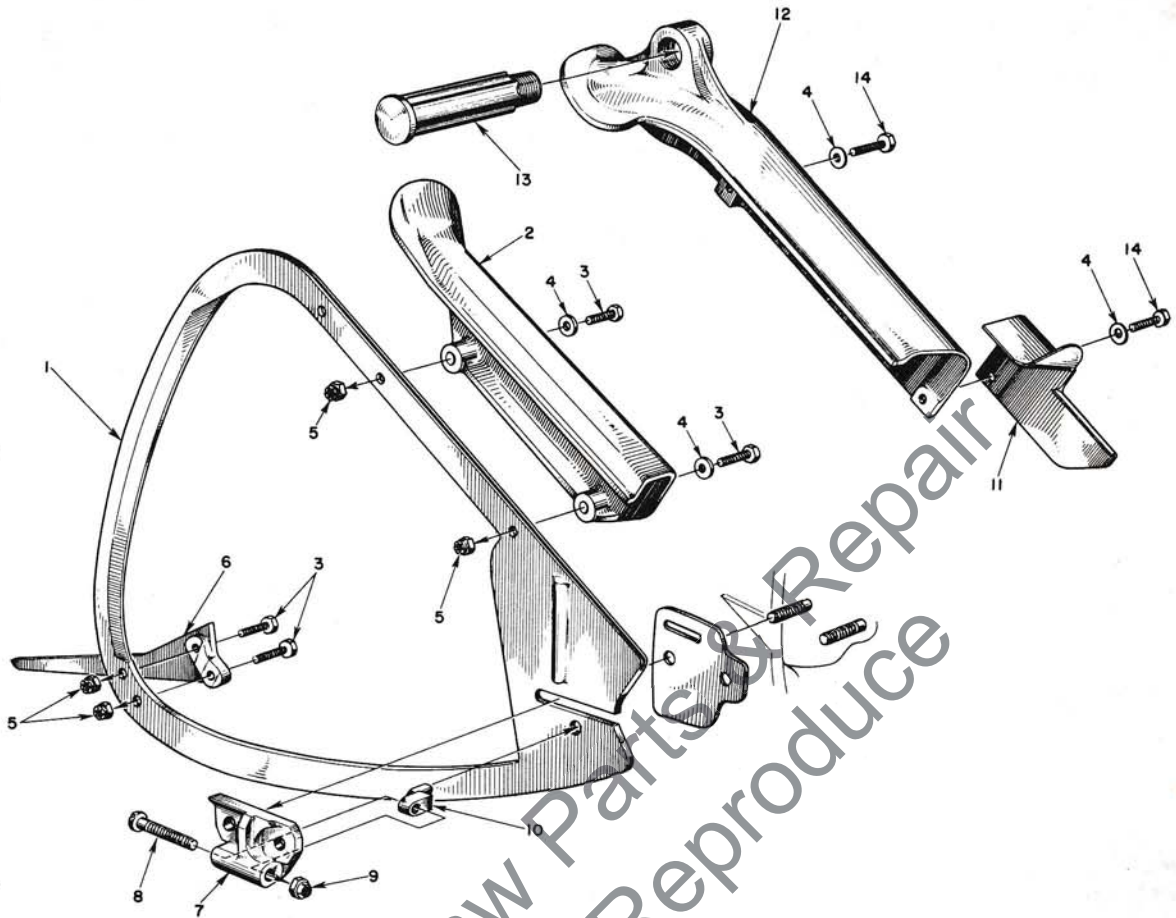


FIGURE 10 — PLUNGE CUT BOW ATTACHMENTS

SEPT. 1958

Index No.	Part No.	Description	No. Required
NOTE: Use left hand column parts list for SHORT GUARD MODEL Bow Attachment.			
1	*55921	14" GUIDE—chain	1
	A-56192	KIT—bow mounting (w/short guard)	1
		Includes	
2	55948	GUARD—short	1
3	80546	SCREW— $\frac{5}{16}$ -24 x $1\frac{1}{4}$ hex	4
4	84001	WASHER— $\frac{5}{16}$ flat	2
5	81112	NUT— $\frac{5}{16}$ -24 hex lock	4
6	72784	SPUR	1
7	A-55591-1	ADJUSTING PLATE (bow)	1
		Includes	
8	80617	SCREW—tension adjusting	1
9	81123	NUT	1
10	55552	PIN	1

Index No.	Part No.	Description	No. Required
NOTE: Use right hand column parts list for LONG GUARD MODEL Attachment with side handle.			
1	*55921	14" GUIDE—chain	1
	A-55955	KIT—bow mounting (w/side handle)	1
		Includes	
3	80546	SCREW— $\frac{5}{16}$ -24 x $1\frac{1}{4}$ hex head	2
4	84001	WASHER— $\frac{5}{16}$ flat	2
5	81112	NUT— $\frac{5}{16}$ -24 hex lock	4
6	72784	SPUR	1
7	A-55591-1	ADJUSTING PLATE (bow)	1
		Includes	
8	80617	SCREW—tension adjusting	1
9	81123	NUT	1
10	55552	PIN	1
11	55297	GUARD	1
12	72779	GUARD (for side handle)	1
13	72226	HANDLE—side	1
14	80559	SCREW— $\frac{5}{16}$ -24 x $1\frac{1}{2}$ hex head	2

*Use 23" chain

HOMELITE

Authorized Sales and Service Branches

Homelite sales and service factory branches are located throughout the country. Field representatives and factory-trained servicemen are always available, ready and able to keep your Homelites running in top performance at all times. See the "Yellow Pages" for the address and phone number of your nearest Homelite Branch office.

Alabama
Birmingham

California
Alhambra (Los Angeles area)
Fresno
Sacramento
S. San Francisco

Colorado
Denver

Connecticut
Byram
Hartford

Florida
Jacksonville
Miami

Georgia
Atlanta

Illinois
Bloomington
Springfield
Stone Park (Chicago area)

Indiana
Indianapolis

Louisiana
Bossier City
Metairie

Maine
Orono

Maryland
Baltimore

Massachusetts
Allston (Boston area)

Michigan
Detroit
Escanaba
Grand Rapids
Saginaw

Minnesota
St. Paul

Mississippi
Jackson

Missouri
Kansas City
St. Louis

Nebraska
Omaha

New Jersey
North Arlington
Woodbridge

New York
Buffalo
Latham (Albany area)
Rochester
Syracuse

North Carolina
Charlotte
Raleigh

Ohio
Cincinnati
Cleveland
Toledo

Oklahoma
Oklahoma City

Oregon
Portland

Pennsylvania
Altoona
Erie
Harrisburg
Hazleton
Malvern
Philadelphia
Pittsburgh

Tennessee
Knoxville
Memphis

Texas
Cleveland
Dallas
Houston
Lufkin
Silsbee

Utah
North Salt Lake

Virginia
Arlington
Richmond
Roanoke

Washington
Seattle
Spokane

West Virginia
Charleston
Clarksburg

Wisconsin
Milwaukee
Green Bay

DOMINION OF CANADA TERRY MACHINERY CO., LTD.

Quebec
Montreal

Alberta
Edmonton

British Columbia
Vancouver

New Brunswick
Moncton

Ontario
Ottawa
Toronto

HOMELITE

a division of Textron Inc.
PORT CHESTER, N. Y., U. S. A.