

HOMELITE

Chain Saw

August 1957



Leon's Chainsaw Parts & Repair
Do Not Sell or Reproduce

PARTS LIST



Model 4-20

HOMELITE CHAIN SAW MODEL 4-20

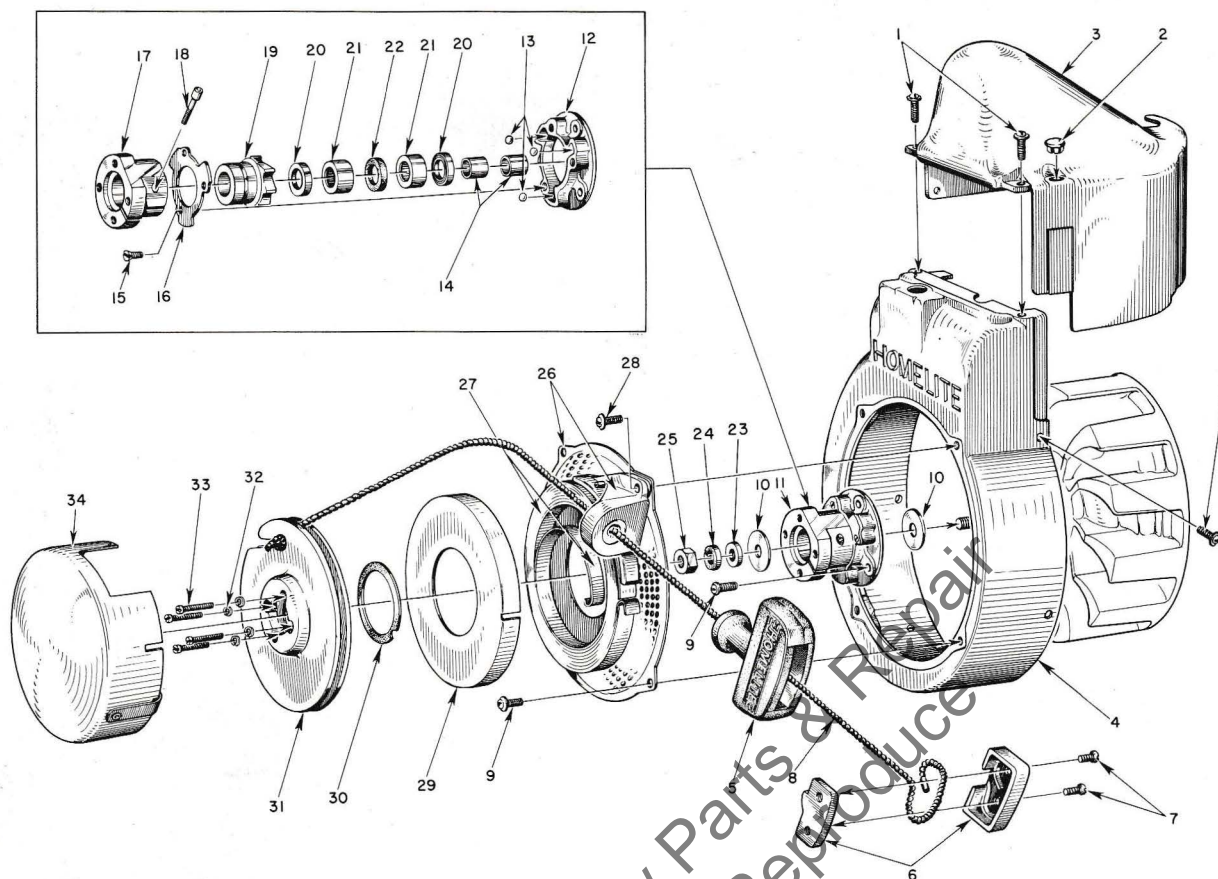
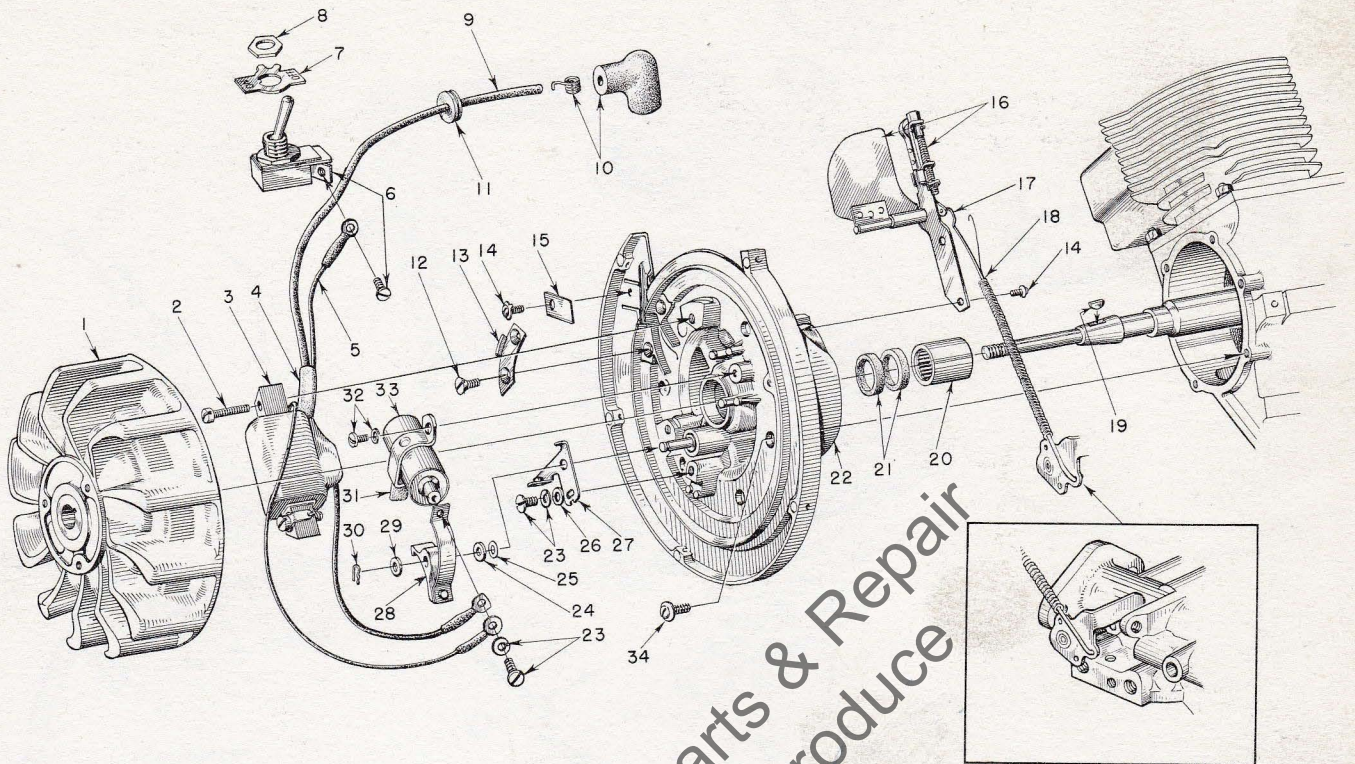


FIGURE 1 — RECOIL STARTER PARTS

AUGUST, 1957

Index No.	Part No.	Description	No. Required	Index No.	Part No.	Description	No. Required
1	80577	SCREW—8-32 x 3/8 pan hd.	1	19	A-55348	RATCHET—w/washer	1
2	32814	PLUG	1			Includes	
3	55015-B	SHIELD—cylinder	1			WASHER—formica	1
4	AA-55208	SHROUD—air, w/inserts	1	20	55272	SEAL—garlock	2
5	55937	GRIP—starting	1	21	55215	BEARING—needle	2
6	A-56081	INSERT—grip w/cover	1	22	55214	FELT	1
		Includes		23	84067	WASHER—5/16 flat aluminum	1
7	80619	SCREW	2	24	83002	WASHER—5/16 lock	1
8	55898	ROPE—nylon	1	25	81117	NUT—5/16-24 hex jam	1
9	80579	SCREW—10-32 x 3/8 pan hd.	6	26	A-55580	SCREEN—air	1
10	55276	WASHER—thrust	2			Includes	
11	AA-55211	BALL DRIVE	1		AA-55222-A	BRACKET w/55363-A bushing	1
		Includes		27	71470-A	SPRING—recoil	1
12	55054-A	PLATE—ball drive	1	28	80576	SCREW—10-32 x 1/8 pan hd. (through	1
13	55217	BALL—steel	3			bracket)	1
14	55218	SLEEVE	2	29	71603	COVER—spring housing	1
15	80588	SCREW—5-40 x 5/16 flat hd.	3	30	71588	SHIM—plastic	as req'd.
	AA-55212-1	RATCHET & HUB	1	31	AA-55223-A	PULLEY—w/pin	1
		Includes		32	83004	WASHER—#6 lock	4
16	55097	RETAINER—ball	1	33	80475	SCREW—6-32 x 3/4 fil. hd.	4
17	A-55342	HUB & SCREW	1	34	AA-73234-1	COVER—pulley	1
		Includes			56187	DECAL—4-20 (for pulley cover)	1
18	72295-A	SCREW—hub	1				
	AA-55213	RATCHET & BEARING	1				

HOMELITE CHAIN SAW MODEL 4-20



Assemble Governor Arm into upper hole in Throttle Stop Lever as indicated.

FIGURE 2 — IGNITION AND GOVERNOR PARTS

AUGUST 1957

Index No.	Part No.	Description	No. Required
1	55404	ROTOR	1
2	30270	SCREW	2
	83046	WASHER—lock #10	2
3	55403	COIL	1
4	55409	SLEEVE—insulating	1
5	55408	LEAD—ground	1
	AA-72094-A	SWITCH—"On-Off"	1
		Includes	
		SWITCH (with ground screw)	1
7	55879	PLATE (on-off)	1
8	72084-A1	NUT	1
9	55407	LEAD—high tension	1
10	A-55373	TERMINAL (sparky)	1
11	60929	GROMMET	1
12	80598	SCREW—6-32 x 1/16 flat hd.	2
13	55381	CLAMP—inner	1
14	80575	SCREW—8-32 x 1/4 pan hd.	3
15	55161	CLAMP—outer	1
16	A-56185	GOVERNOR ASSEMBLY	1
		Includes	
	84066	WASHER—governor arm burr	1
17	55943	Rod—governor	1

Index No.	Part No.	Description	No. Required
18	55588	SPRING—governor	1
19	75078	KEY—rotor	1
	A-55406	PLATE—back	1
		Includes	
20	55204	BEARING—needle	1
21	71597	SEAL—garlock	2
22	*	PLATE	1
23	55411	SCREW—6-32 x 1/16 (with washer)	2
24	55412	WASHER—contact plate	2
25	30268	WASHER—spring	as req.
26	72484	WASHER—fixed contact plate screw	1
	A-55402	POINTS (set)	1
		Includes	
27	*	PLATE—fixed contact	1
28	*	BREAKER ARM	1
29	28003	WASHER—breaker arm	1
30	28008	LOCK—spring	1
31	30267	WICK—felt	1
32	30261	SCREW—8-32 x 1/16 (with washer)	1
33	55399	CONDENSER	1
34	80576	SCREW—10-32 x 1/16 pan hd.	6

* Not supplied separately

HOMELITE CHAIN SAW MODEL 4-20

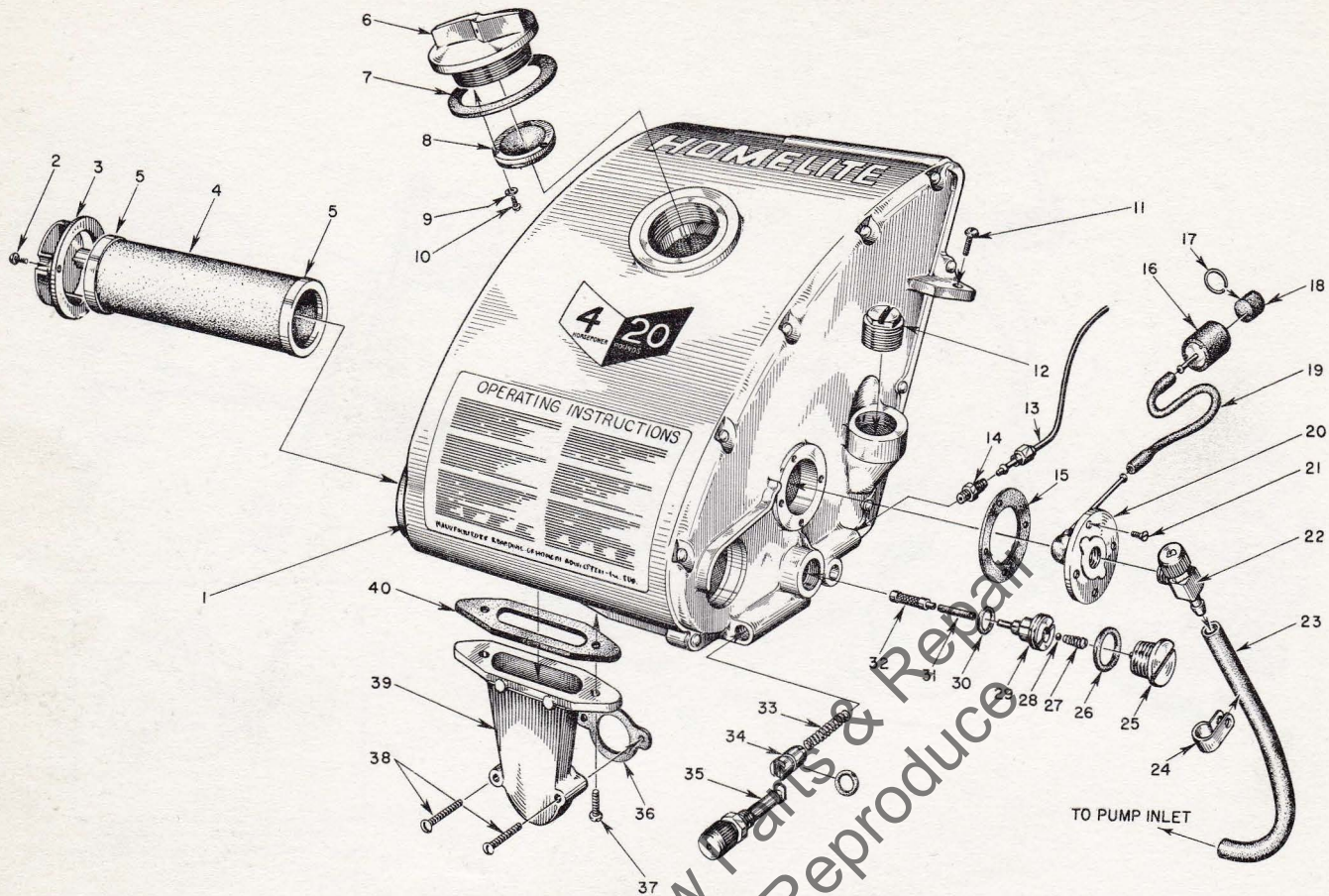


FIGURE 3—FUEL TANK

AUGUST 1957

Index No.	Part No.	Description	No. Required
	56033	FOILCAL—Homelite	1
	56189	FOILCAL—4-20	1
	55968	FOILCAL—instructions	1
1	A-55709	FUEL TANK	1
		Includes	
2	80571	SCREW—6-32 x 3/8 pan hd.	2
3	55066-A	CAP—air filter	1
4	A-55531	FILTER—air	1
		Includes	
5	55530	GASKET (cemented to filter)	2
	55729-1	DECAL—instructions	1
	55249	DECAL—Homelite	1
6	A-55305	CAP—fuel	1
		Includes	
7	72173	GASKET	1
8	A-55301-B	VALVE—relief	1
9	83083	WASHER—#3 lock	3
10	80592	SCREW—3-48 x 1/4 rd. hd.	3
11	80582	SCREW—8-32 x 5/8 pan hd.	1
12	55140-A	CAP—oil filler	1
13	AA-55191	LINE—oil	1
14	A-55824	VALVE—check	1
15	72174	GASKET	1

Index No.	Part No.	Description	No. Required
16	A-74375	BODY—fuel strainer	1
		Includes	
17	74380	RING—snap	1
18	74374	FILTER—felt	1
19	72107-A	SLEEVE—flexible	1
20	AA-72475	FITTING—fuel outlet	1
21	80451	SCREW—6-32 x 3/8 flat hd.	4
22	55738	VALVE—shut-off	1
23	A-55801	LINE—fuel	1
24	56014	CLIP—fuel line, nylon	1
25	AA-55167	CAP—oil supply line	1
26	55107	GASKET	1
27	55288-A	SPRING—check valve	1
28	25527	BALL—check	1
29	55109-A	SEAT—check ball	1
30	55110	GASKET	1
31	55133-A	SLEEVE—flexible	1
32	AA-55259-A	PICK-UP—oil	1
33	71762	SPRING—plunger	1
34	A-74406	TUBE—plunger (includes 74388 "O" ring)...	1
35	71764	BUTTON—plunger	1
36	72971-1	GASKET—air elbow	1
37	80572	SCREW—10-32 x 5/8 pan hd.	2
38	80638	SCREW—10-32 x 1 1/4" pan hd.	2
39	55019-2	ADAPTER—air filter	1
40	55059	GASKET—adapter	1

MODIFIED 4-20

Identified by "A" preceding Serial Number

Index No.	Part No.	Description	No. Required
	56400	DECAL - Homelite	1
	56189-A	DECAL - 4-20	1
1	A-55568-A	FUEL TANK	1
3	55066-B	CAP - air filter	1
4	57172	FILTER - air	1
5	57173	GASKET	1
6	A-56908	CAP - fuel	1
16	A-56200	STRAINER	1
17	56196	RING - rubber	1
23	A-56379	LINE - fuel	1
39	55019-3	ADAPTER	1

MODIFIED 4-20

Identified by "A" preceding Serial Number

Index No.	Part No.	Description	No. Required
24	55104-1	SHIELD	1
Add: -	56014	CLIP - fuel line	1
	29187	PLUG - button (carb. shield)	1

Leon's Chainsaw Parts & Repair
Do Not Sell or Reproduce

HOMELITE CHAIN SAW MODEL 4-20

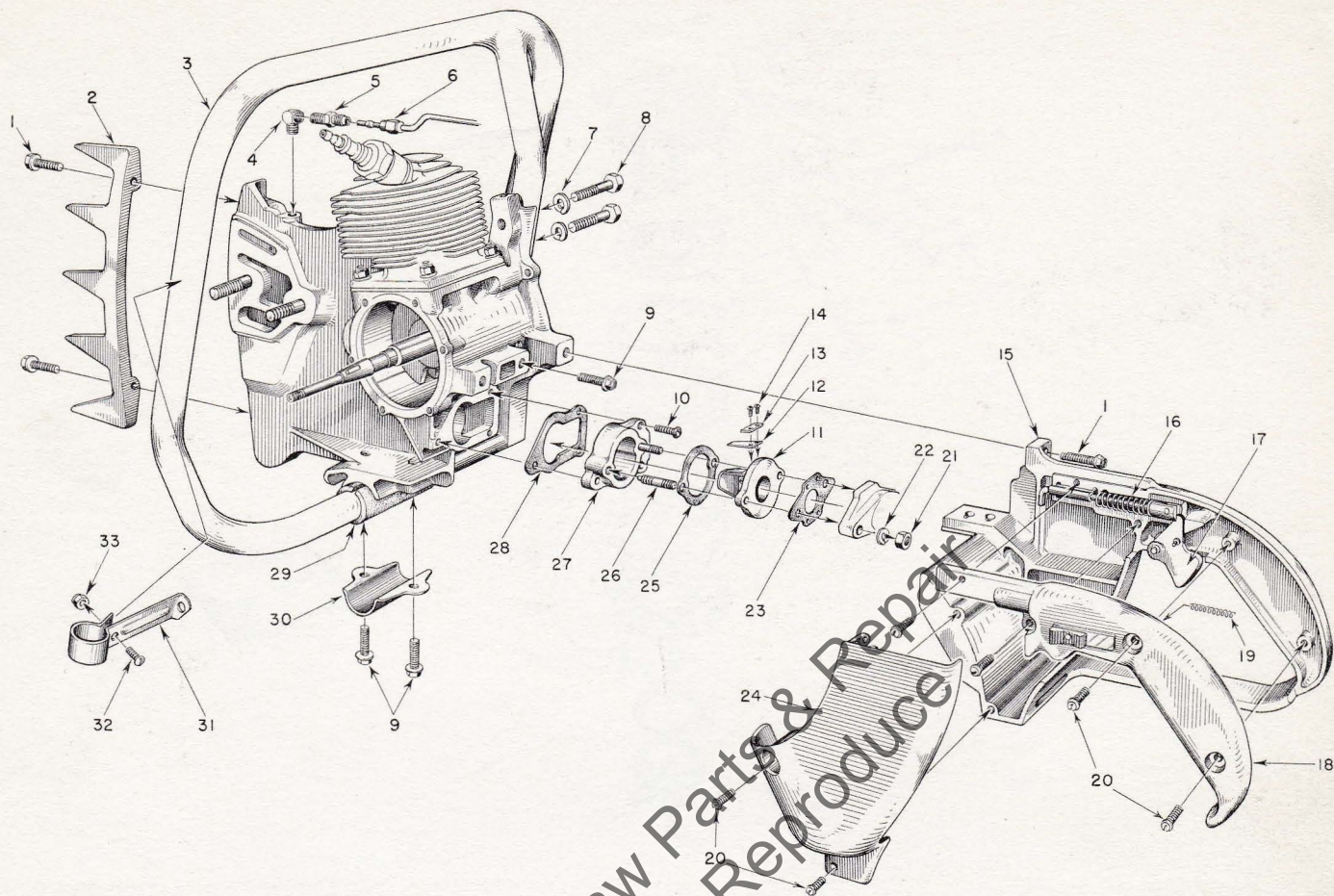


FIGURE 4 — HANDLE, GRIP AND REED VALVE PARTS

AUGUST 1957

Index No.	Part No.	Description	No. Required
1	80573	SCREW— $\frac{1}{4}$ -20 x $\frac{3}{16}$ x hex hd.	5
2	55103	PLATE—bumper	1
3	A-55518	HANDLE—wrap-around (4-20A)	1
		Includes	
	80308	SCREW— $\frac{5}{16}$ -18 x 1 Allen	1
	AA-55119	HANDLE—flush-cut (4-20)	1
4	31734	ELBOW—connector	1
5	31733-1	ADAPTER—straight	1
6	AA-55191	LINE—chain oil	1
7	83003	WASHER— $\frac{3}{16}$ lock	2
8	80087	SCREW— $\frac{5}{16}$ -18 x $1\frac{1}{2}$ hex hd.	2
9	80581	SCREW— $\frac{1}{4}$ -20 x $\frac{5}{8}$ hex hd.	4
10	80583	SCREW—10-32 x $\frac{3}{4}$ pan hd.	3
11	55932	ADAPTER—reed valve	1
12	55941	REED	4
13	55942	PLATE—reed	4
14	80658	SCREW—4-40 x $\frac{3}{16}$ pan hd.	8
15	AA-55281	GRIP—pistol w/pin and 55372 felt	1
16	A-55954	ROD—throttle	1
		Includes	
	55045-A	SPRING	1

Index No.	Part No.	Description	No. Required
17	AA-55207	TRIGGER—throttle	1
18	AA-55228	COVER—pistol grip	1
		Includes	
	AA-55282	LOCK—throttle	1
		Includes	
	19	SPRING—lock	1
20	80560	SCREW—8-32 x $\frac{1}{2}$ pan hd.	7
21	81013	NUT— $\frac{1}{4}$ -20 hex	2
22	83009	WASHER— $\frac{1}{4}$ lock	2
23	55553	GASKET—carburetor	1
24	55104	SHIELD—carburetor	1
25	55946	GASKET—spacer-adapter	1
26	55945	STUD	2
27	55933	SPACER—reed adapter	1
28	55116	GASKET	1
29	55146	CUSHION—handle	1
30	55145	CLAMP—handle	1
31	A-55740	BRACE—handle	1
		Includes	
	32	SCREW—10-32 x $\frac{7}{16}$	1
	33	NUT—10-32 lock	1

HOMELITE CHAIN SAW MODEL 4-20

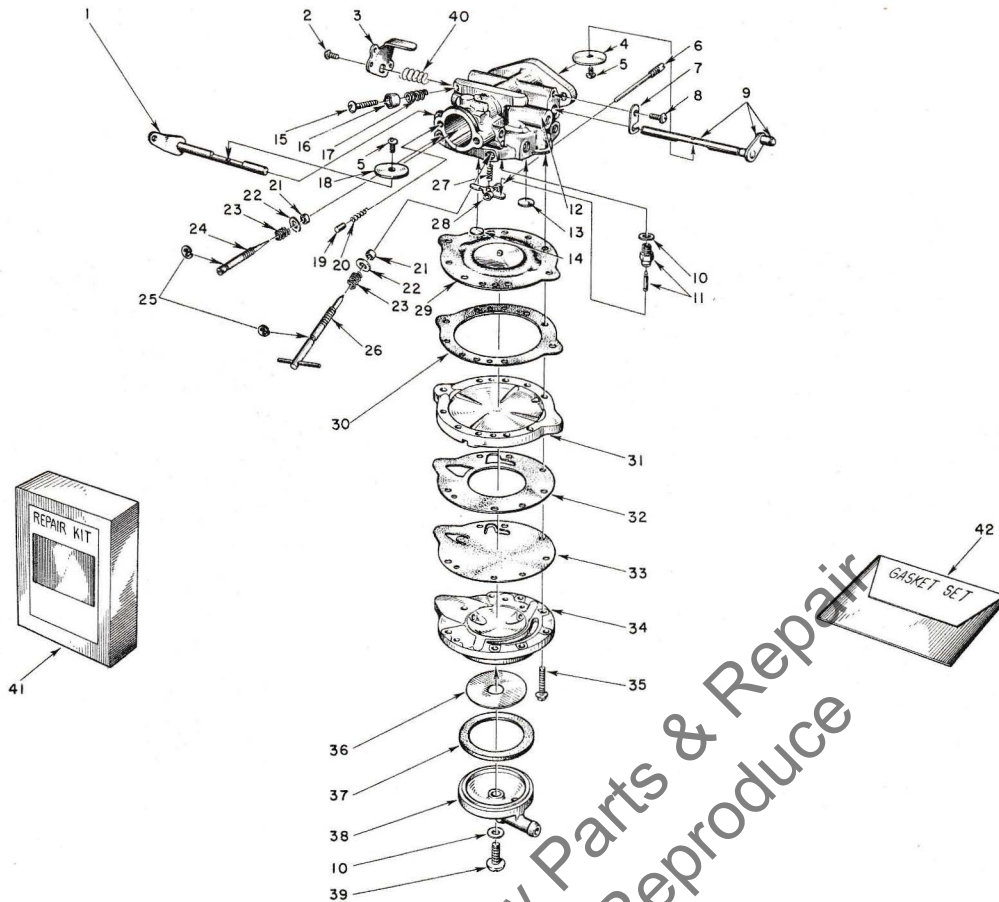


FIGURE 5 — BROWN CARBURETOR PARTS

AUGUST 1957

Index No.	Part No.	Description	No. Required	Index No.	Part No.	Description	No. Required
	A-55928	CARBURETOR — Brown Model 5-CS.....	1	20	77017	SPRING — choke friction.....	1
		Includes		21	†77007	RING — square.....	2
1	A-77249	SHAFT AND LEVER — choke.....	1	22	*77006	WASHERS — adjustment packing.....	2
2	*77042	SCREW — stop lever, 4-40 x 1/4 Truss. hd.	1	23	*77005	SPRING — adjustment compression.....	2
3	77247	LEVER — throttle stop.....	1	24	*A-77251	SCREW — idle adjustment w/77004 clip	1
4	74980	SHUTTER — throttle.....	1	25	77004	CLIP — spring retaining.....	2
5	77044	SCREW — shutter, 4-40 x 1/8 rd. hd.....	2	26	*A-77001	SCREW — main adjusting w/77004 clip	
6	*A-77012	FULCRUM PIN	1	27	*77015	SPRING — tension.....	1
7	*74981	CLIP — throttle shaft.....	1	28	*77016	LEVER — diaphragm.....	1
8	*77041	SCREW — throttle clip, 6-32 x 1/4 pan hd.	1	29	†A-77250	DIAPHRAGM — main.....	1
9	A-77253	SHAFT — throttle.....	1	30	†77030	GASKET — main diaphragm.....	1
10	†77267	GASKET — copper	2	31	77241	COVER — main diaphragm.....	1
11	*A-74996-A	NEEDLE AND SEAT — inlet w/gasket.....	1	32	†77025	GASKET — pump body.....	1
12	A-77248	BODY — service.....	1	33	†77026	DIAPHRAGM — pump.....	1
		Includes		34	77027	BODY — fuel pump.....	1
13	*74977	PLUG — welch 3/8.....	1	35	77160	SCREW — body 6-32 x 3/4 fl. hd.....	6
14	*74978	PLUG — welch 5/16.....	1	36	*77028	SCREEN — strainer.....	1
15	77040	SCREW — idle speed, 6-32 x 3/16 rd. hd.	1	37	†77029	GASKET — strainer.....	1
16	77011	CUP — idle speed screw.....	1	38	77031	COVER — fuel pump.....	1
17	77010	SPRING — idle speed screw.....	1	39	77043	SCREW — turret, 8-32 x 7/16, truss hd.....	1
18	74991	SHUTTER — choke.....	1	40	56175	SPRING	1
19	77018	PLUNGER — choke friction.....	1	41	77255	REPAIR PARTS KIT (RK-151)	1
				42	*77254	GASKET SET (GS-151)	1

† Included in GS-151 Gasket Set

* Included in RK-151 Repair Parts Kit

HOMELITE CHAIN SAW MODEL 4-20

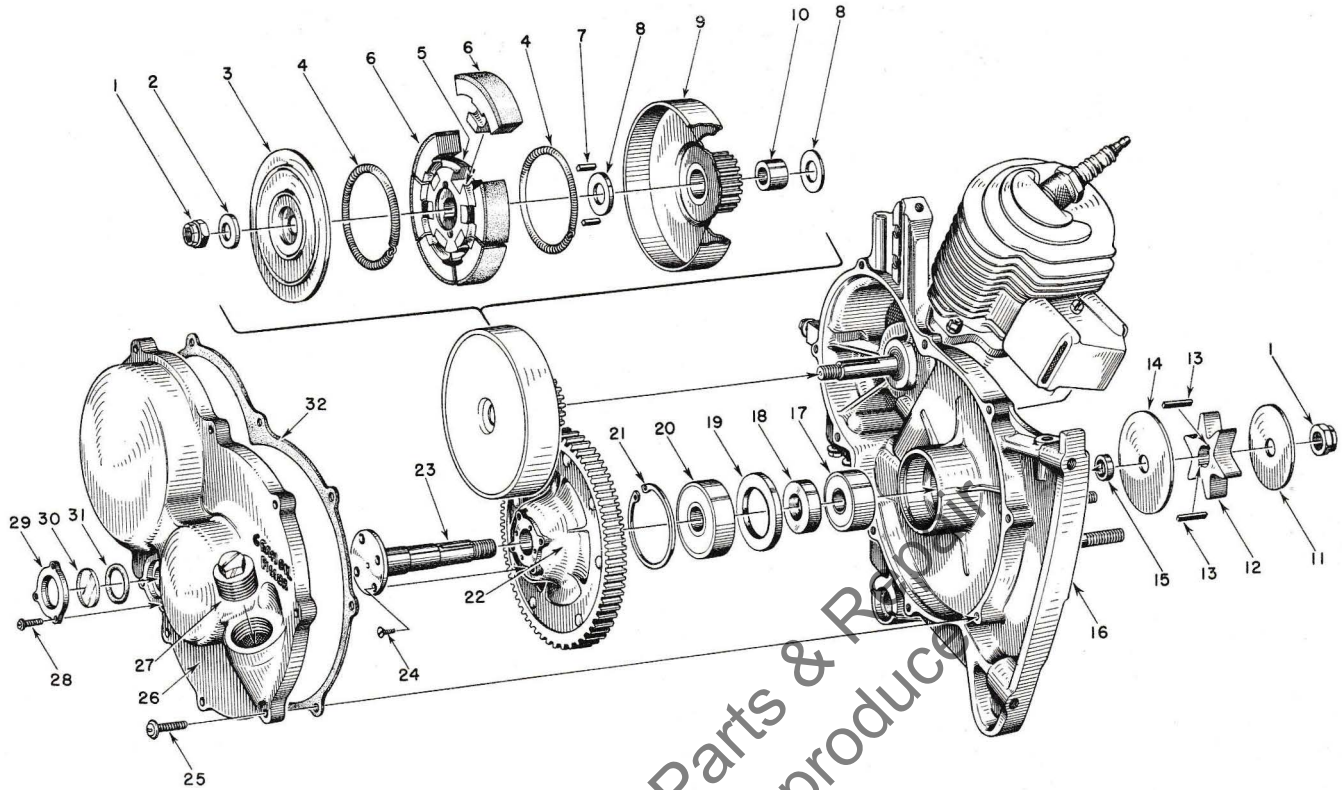


FIGURE 6 — GEAR CASE AND SPROCKET PARTS

AUGUST 1957

Index No.	Part No.	Description	No. Required	Index No.	Part No.	Description	No. Required
1	81116	NUT— $\frac{3}{8}$ -24 flex-lock	2	17	55184	BEARING—ball	1
2	55036	WASHER—clutch	1	18	55024-A	SPACER—bearing	1
3	55126	COVER—clutch	1	19	55025	SHOULDER—spacer	1
	A-55693	CLUTCH	1	20	72040	BEARING—ball	1
		Includes		21	28922	RING—retaining	1
4	55123-A	SPRING	2	22	AA-55068-2	DRIVEN GEAR	1
5	55075	SPIDER	1	23	55005-C	SHAFT—sprocket	1
6	A-55692	SHOE	6	24	80651	SCREW—12-28 x $\frac{3}{8}$ flt hd., socket	4
7	55225	KEY—clutch	2	25	80572	SCREW—10-32 x $\frac{5}{8}$ pan hd.	9
8	55034	WASHER—thrust	2	26	AA-55226-A	COVER—gear case	1
9	AA-55086	CLUTCH DRUM (and drive gear)	1			Includes	
10	55035	BEARING—drive gear	1	27	55140-A	PLUG—oil filler	1
11	55163	WASHER—sprocket (outer)	1	28	80571	SCREW—6-32 x $\frac{3}{8}$ pan hd.	3
12	55101-A	SPROCKET	1	29	55098	PLATE—window	1
13	55482-1	KEY—sprocket	2	30	55099	WINDOW—plastic	1
14	55162	WASHER—sprocket (inner)	1	31	55100	GASKET—"O" ring	1
15	55586-A	SPACER—sprocket	1		56188	DECAL	1
16	*	CRANKCASE	1	32	55053-A	GASKET—gearcase cover	1

*A-55598—for breakdown see Figure 7—Engine Assembly.

HOMELITE CHAIN SAW MODEL 4-20

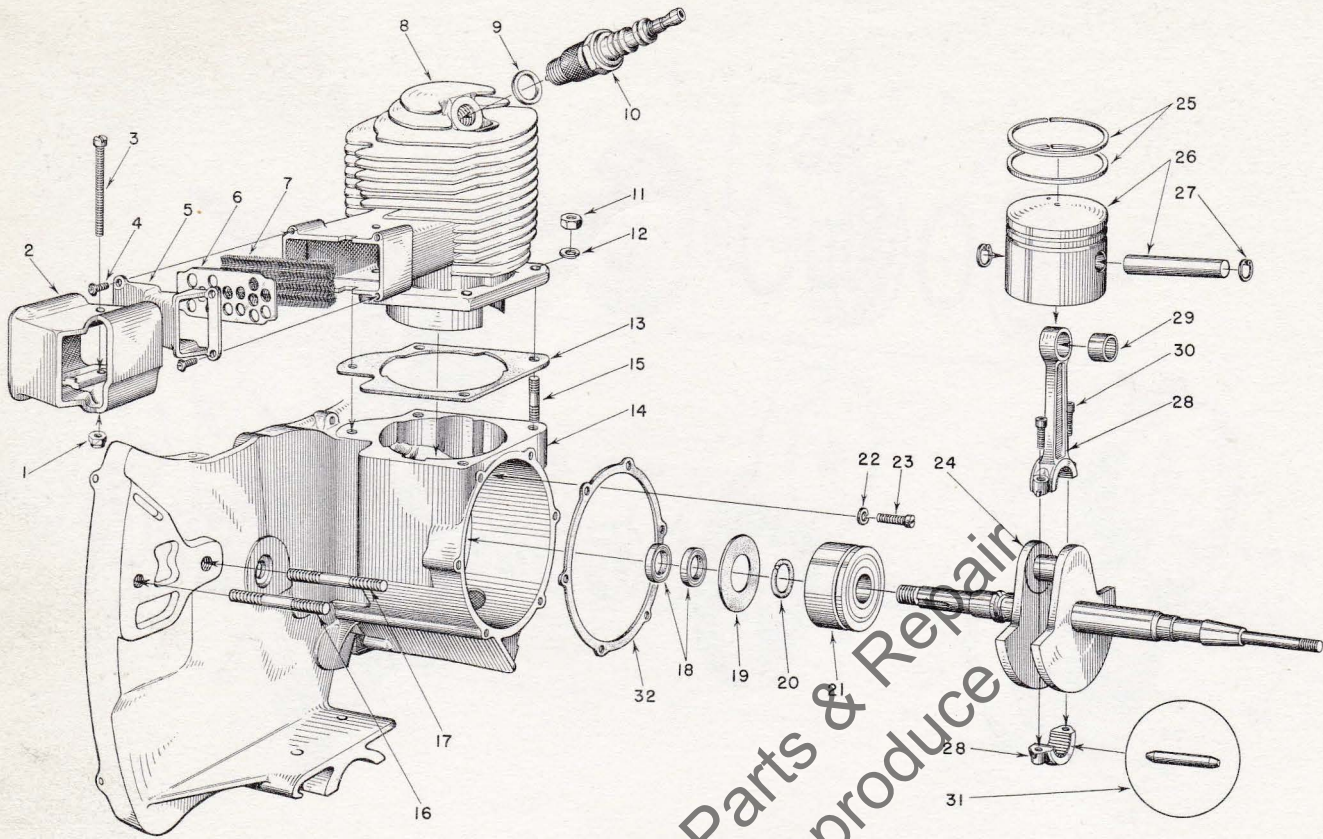


FIGURE 7 — ENGINE ASSEMBLY

AUGUST 1957

Index No.	Part No.	Description	No. Required
1	81109	NUT—10-32 flex-lock	1
2	55089-1	DAMPER—heat	1
3	80574	SCREW—10-32 x 1 1/8 in. hd.	1
4	80630	SCREW—6-32 x 1/2 in. spin-lock	4
5	55090-B	CAP—exhaust	1
6	55295-A	RETAINER—muffler element	1
7	55199	ELEMENT—muffler	1
8	55000-B	CYLINDER	1
9	25038	GASKET—(included with spark plug)	1
10	71530	SPARK PLUG—Champion H0-8A	1
11	81065-2	NUT—1/4-28 hex	4
12	83009	WASHER—1/4 lock	4
13	55050-A	GASKET—cylinder	1
14	A-55598	CRANKCASE	1
		Includes	
15	55871	STUD—cylinder	4
16	55606	STUD—guide bar (long)	1
17	55056-D	STUD—guide bar (short)	1

Index No.	Part No.	Description	No. Required
18	71597	SEAL—garlock	2
19	55048-A	GASKET—crankcase sealing	1
20	55047	RING—retaining (main bearing)	1
21	55193	BEARING—main	1
22	83061	WASHER—lock, spec. thin.	2
23	19238-A	SCREW—main bearing retaining	2
24	55008-B	CRANKSHAFT	1
25	55038	RING—piston	2
26	AA-55279	PISTON and PIN	1
		Includes	
27	55095	RING—piston pin retaining	2
28	AA-55195	CONNECTING ROD	1
		Includes	
29	55196	BEARING—piston pin	1
30	80541	SCREW—8-32 x 1/2 allen cap	2
31	AA-55280	ROLLERS (set of 27)	1
32	55049	GASKET—back plate	1

Identified by "A" preceding Serial Number

Index No.	Part No.	Description	No. Required
8	56132	WASHER	2
9	A-56849	CLUTCH DRUM	1
10	56133	BEARING	1
11	56077	WASHER	1
12	55593-2	SPROCKET	1
13	56076-1	KEY	2
14	56074	WASHER	1
15	56071	SPACER	1
18	56072	SEAL	1
20	56219-8	BEARING	1
23	56070	SHAFT - sprocket	1
26	AA-55226-B	COVER - gear case	1

MODIFIED 4-20

Identified by "A" preceding Serial Number

Index No.	Part No.	Description	No. Required
5	A-56613-A	CAP	1
13	56864	GASKET	1
	* A-57099	CRANKCASE	
14	A-57743	CRANKCASE	1
	When available, will include:		
	57349	STUD - for fuel tank	1
	57350	STUD - for gear case cover	9
16	57051	STUD	1
17	57052	STUD	1
18	56134	SEAL	1
20	56109	RING	1
21	56097-S	BEARING	1
24	57336	CRANKSHAFT	1

* Order this number (A-57099)

After stock of A-57099 is depleted, A-57743 will be supplied automatically.

HOMELITE CHAIN SAW MODEL 4-20

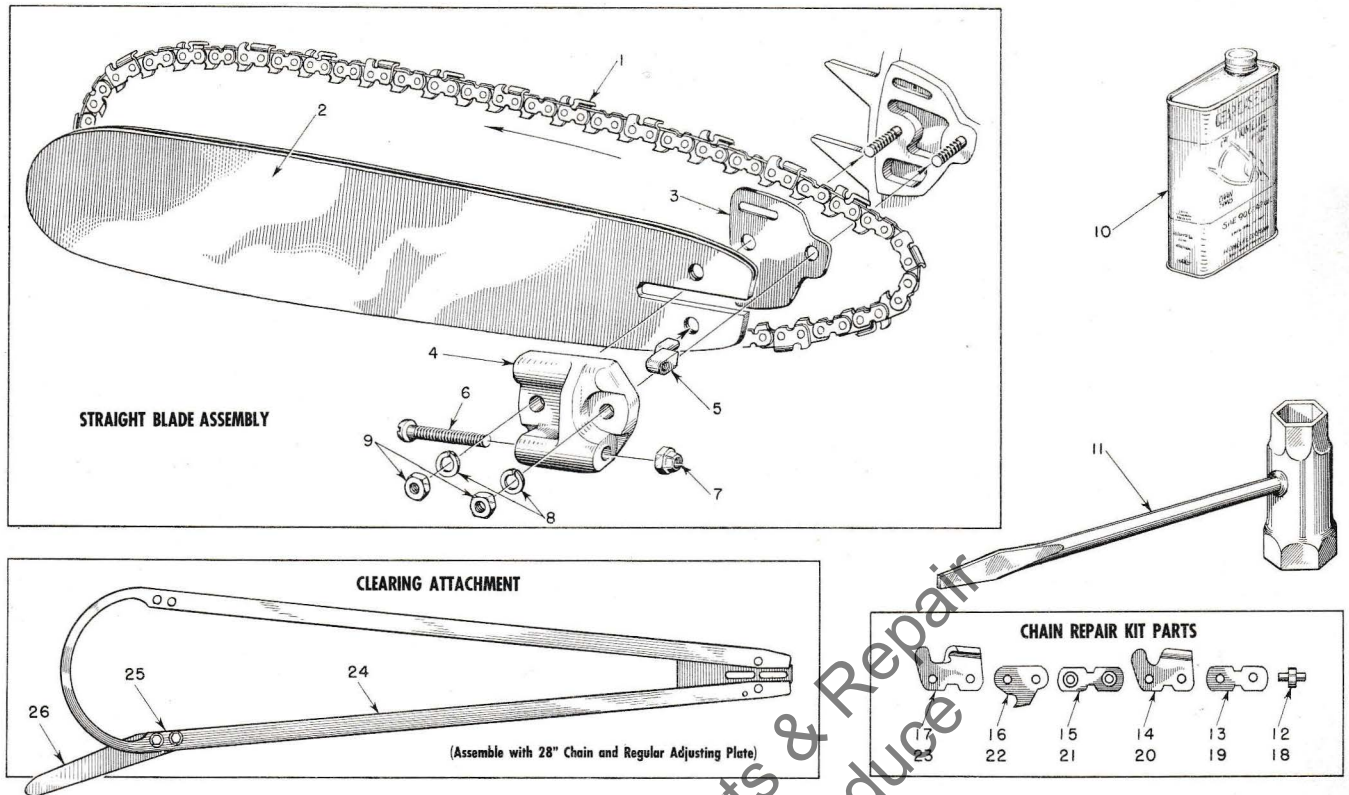


FIGURE 8 — SAW PARTS

Index No.	Part No.	Description	No. Required	Index No.	Part No.	Description	No. Required
		OREGON #10C 1/2 PITCH CHAIN				Includes	
1	A-55338	14" CHAIN—(with kit)	1	4	55551-B	PLATE—adjusting	1
	AA-73338	18" CHAIN—(with kit)	1	5	55552	PIN—guide bar adjusting	1
	A-55319	20" CHAIN—(with kit)	1	6	80617	SCREW—3/16-18 x 2 round hd.	1
	*AA-73340	23" CHAIN—(with kit)	1	7	81123	NUT—hex lock	1
	**AA-73342	28" CHAIN—(with kit)	1	8	83018	WASHER—lock	2
	AA-73344	33" CHAIN—(with kit)	1	9	81089	NUT—3/8-16 hex	2
	AA-73346	38" CHAIN—(with kit)	1	10	55291-A	OIL—gear (pint can SAE-90)	1
		ATKINS #163 CT 1/2 PITCH CHAMFERED CHAIN		11	22808	WRENCH—combination	2
	A-51586	14" CHAIN—(with kit)	1		AA-73314	REPAIR KIT—OREGON #10C CHAIN	
	A-51587	18" CHAIN—(with kit)	1			Includes	
	A-51588	20" CHAIN—(with kit)	1	12		RIVET	4
	*A-51589	23" CHAIN—(with kit)	1	13		LINK—connecting (plain)	2
	**A-51590	28" CHAIN—(with kit)	1	14		CUTTER—left	1
	A-51591	33" CHAIN—(with kit)	1	15		LINK—connecting (w/rivets)	2
	A-51592	38" CHAIN—(with kit)	1	16		LINK—drive	1
				17		CUTTER—right	1
2	A-55333	14" BAR—track hardened .063	1		A-51578	REPAIR KIT—ATKINS #163 CT CHAIN	
	A-55255	18" BAR—track hardened .063	1			Includes	
	AA-55331	20" BAR—track hardened .063	1	18		RIVET	4
	A-55256	23" BAR—track hardened .063	1	19		LINK—connecting (plain)	2
	A-55257	28" BAR—track hardened .063	1	20		CUTTER—left	1
	55329-1	18" BAR—extra hard tip .063	1	21		LINK—connecting (w/rivets)	2
	55327-1	23" BAR—extra hard tip .063	1	22		LINK—drive	1
	55330-1	28" BAR—extra hard tip .063	1	23		CUTTER—right	1
	55335-1	33" BAR—extra hard tip .063	1	24	†A-56169	CLEARING ATTACHMENT	1
	55336-1	38" BAR—extra hard tip .063	1			Includes	
3	55128	SHIM	1	25	80604	SCREW—hex hd. 3/16-24 x 3/4	2
	A-55591	ADJUSTING PLATE	1	26	73820	SPUR—plunging	1

*Also fits 14" Bow Attachment.

**Also fits Clearing Attachment.

†Use 8 tooth sprocket 55593-2 with clearing attachment.

HOMELITE CHAIN SAW MODEL 4-20

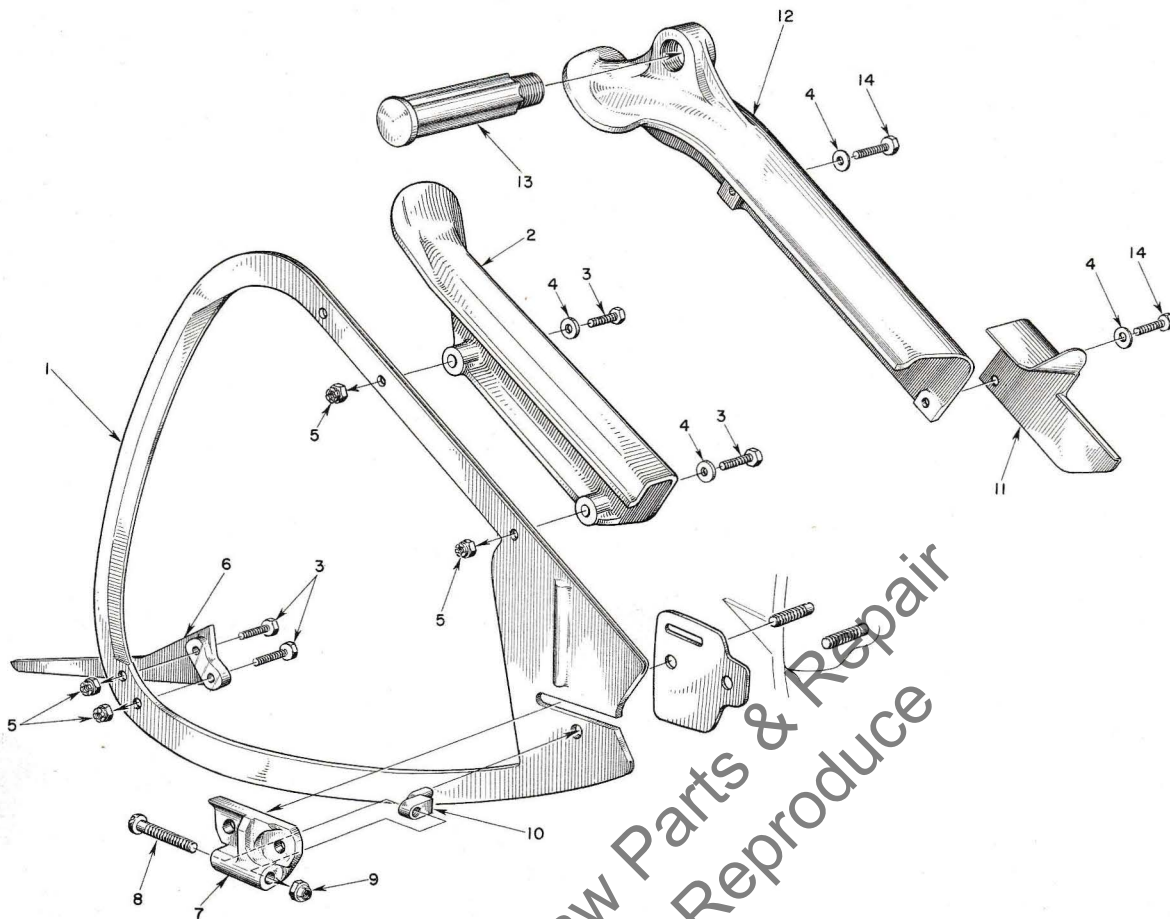


FIGURE 9 — PLUNGER CUT BOW ATTACHMENTS

AUGUST 1957

Index No.	Part No.	Description	No. Required
NOTE: Use left hand column parts list for SHORT GUARD MODEL Bow Attachment.			
1	*55921	14" GUIDE—chain	1
	**A-56192	KIT—bow mounting (w/short guard)	1
		Includes	
2	55948	GUARD—short	1
3	80546	SCREW— $\frac{5}{16}$ -24 x $1\frac{1}{4}$ hex	4
4	84001	WASHER— $\frac{5}{16}$ flat	2
5	81112	NUT— $\frac{5}{16}$ -24 hex lock	4
6	72784	SPUR	1
7	A-55591-1	ADJUSTING PLATE (bow)	1
		Includes	
8	80617	SCREW—tension adjusting	1
9	81123	NUT	1
10	55552	PIN	1

Index No.	Part No.	Description	No. Required
NOTE: Use right hand column parts list for LONG GUARD MODEL Attachment with side handle.			
1	*55921	14" GUIDE—chain	1
	**A-55955	KIT—bow mounting (w/side handle)	1
		Includes	
3	80546	SCREW— $\frac{5}{16}$ -24 x $1\frac{1}{4}$ hex head	2
4	84001	WASHER— $\frac{5}{16}$ flat	2
5	81112	NUT— $\frac{5}{16}$ -24 hex lock	4
6	72784	SPUR	1
7	A-55591-1	ADJUSTING PLATE (bow)	1
		Includes	
8	80617	SCREW—tension adjusting	1
9	81123	NUT	1
10	55552	PIN	1
11	55297	GUARD	1
12	72779	GUARD (for side handle)	1
13	72226	HANDLE—side	1
14	80559	SCREW— $\frac{5}{16}$ -24 x $1\frac{1}{2}$ hex head	2

*Use 23" chain

**Use 8 Tooth Sprocket 55593-2 with Bow Attachments.

CUT HERE
MODIFIED 4-20

Identified by "A" preceding Serial Number

Index No.	Part No.	Description	No. Required
4	56957-A	PLATE	1
13	A-56169-B	CLEARING ATTACHMENT	1

Leon's Chainsaw Parts & Repair
Do Not Sell or Reproduce

MODIFIED 4-20

Identified by "A" preceding Serial Number

Index No.	Part No.	Description	No. Required
1	A-56486	16" BOW GUIDE	1

Leon's Chainsaw Parts & Repair
Do Not Sell or Reproduce

**You'll
SPEED WORK
and make
MORE MONEY
with...**



HOMELITE
SELF-PRIMING PUMPS



HOMELITE
DEPENDABLE GENERATORS



HOMELITE
POWERFUL ONE-MAN CHAIN SAWS



HOMELITE
ONE-MAN CONCRETE VIBRATORS



HOMELITE — BOSCH (Germany)
ELECTRIC BUILDER'S HAMMERS

All Powered By Famous HOMELITE Engines

Homelite's two-cycle gasoline engines are the most efficient and dependable units of their kind ever built. Their two-cycle design, developed to perfection by Homelite engineers over the past 35 years, gives maximum power for the least weight because power is produced at every piston down stroke. As an added advantage, this design requires fewer moving parts which means greater dependability and lower maintenance.

HOMELITE
a division of Textron Inc.
PORT CHESTER, N. Y.

A TRUSPECTIVE Publication by
The PURNELL COMPANY
Boston, Mass.