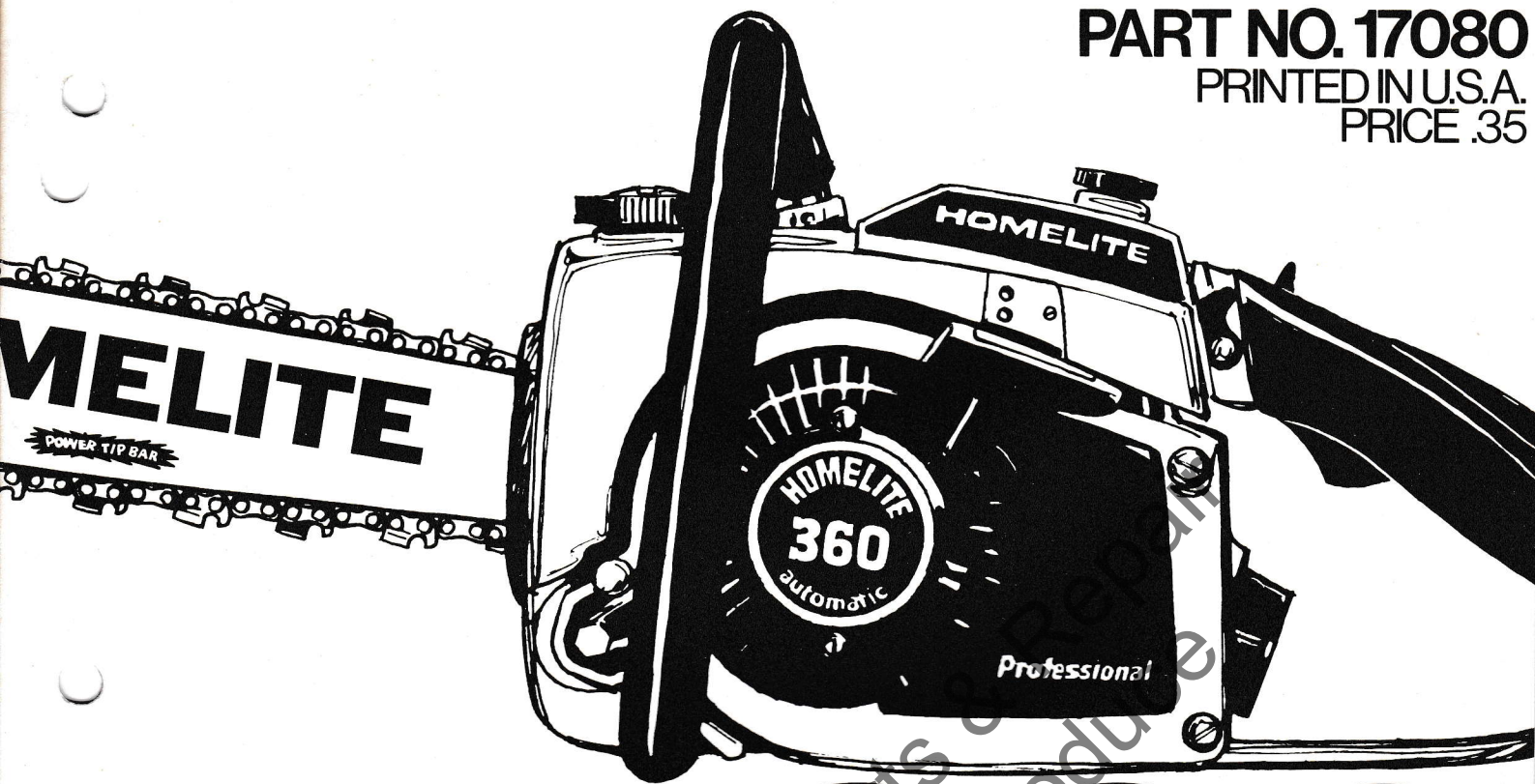


**PART NO. 17080**

PRINTED IN U.S.A.

PRICE .35



**HOMELITE®**

**360**

**Automatic**

**CHAIN SAW**

**Models 360, 360HG, 360SL.**

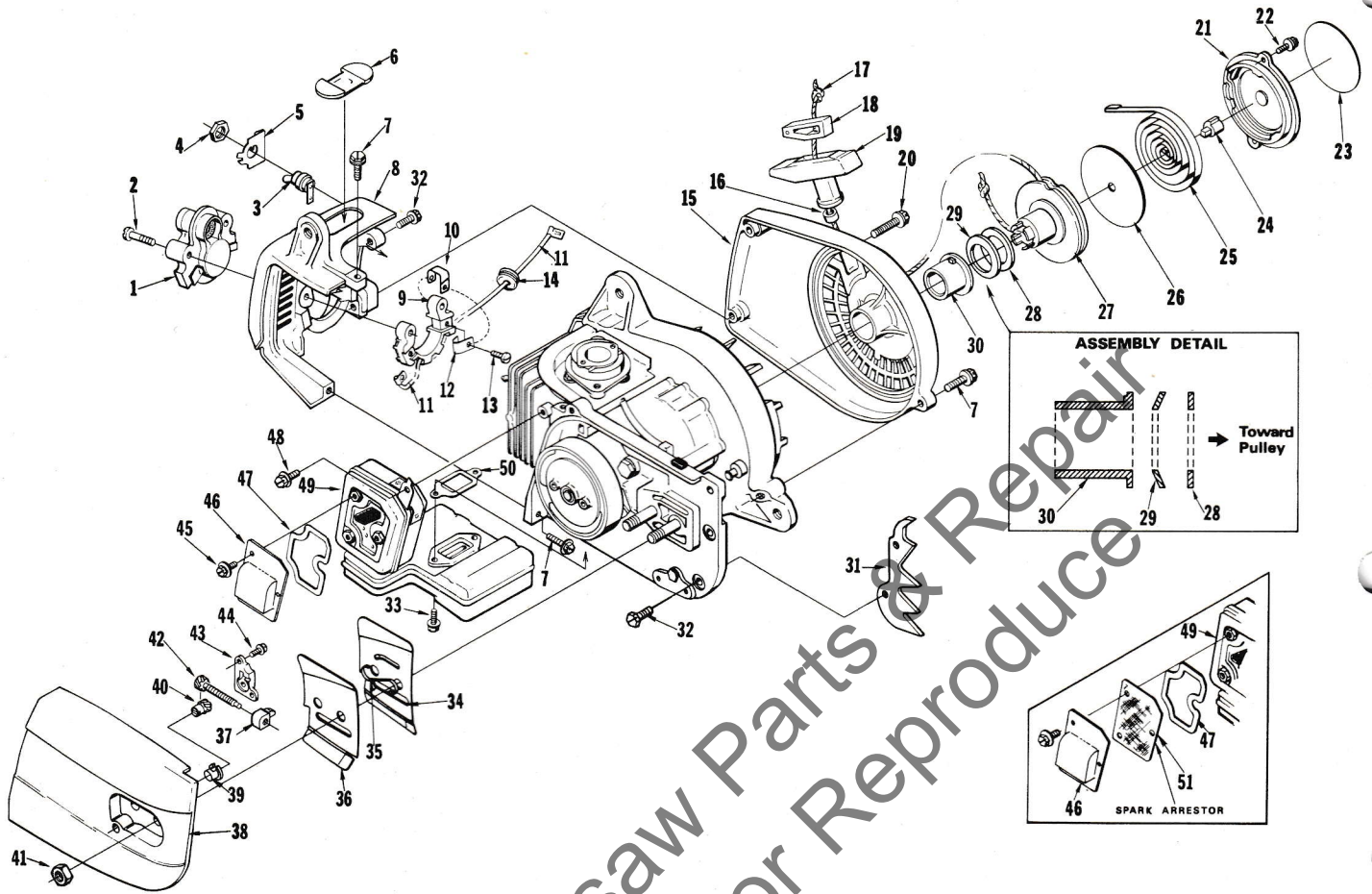
**PARTS LIST**

**HOMELITE** **TEXTRON**

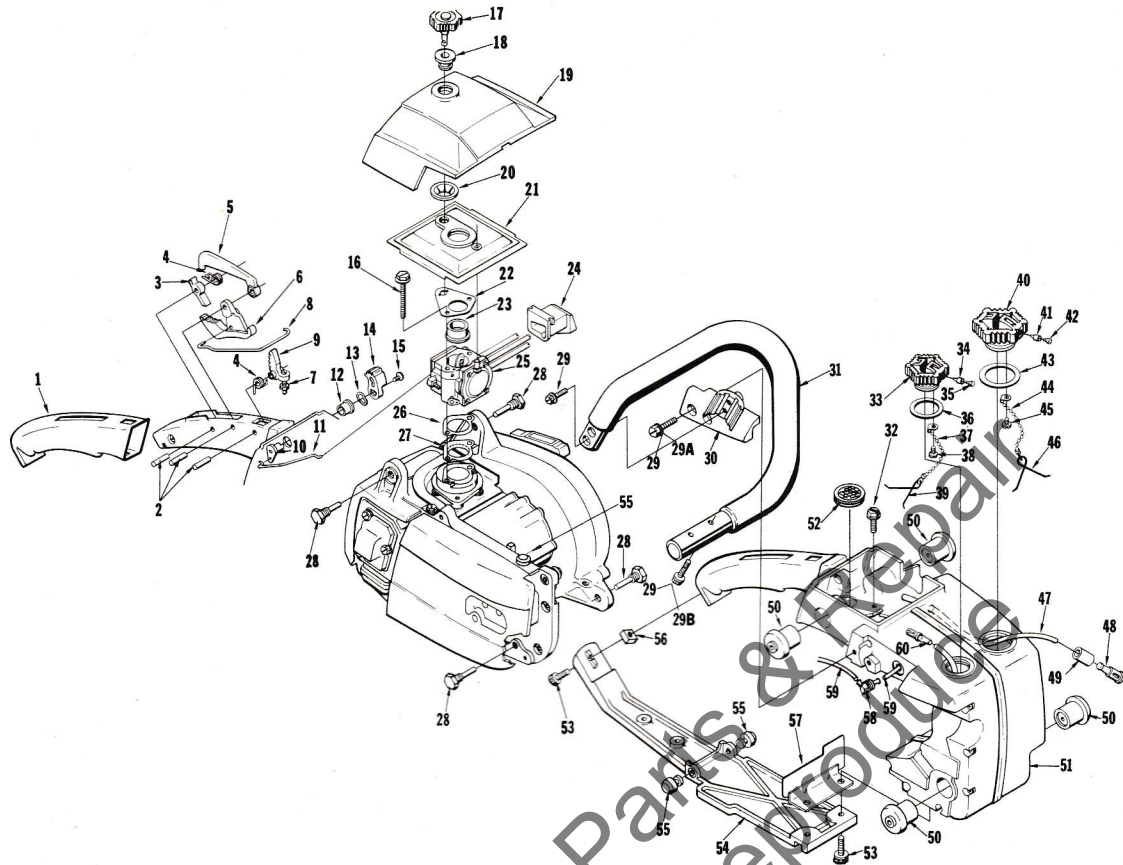
Homelite Division of Textron Inc.

# 360 360 HG 360 SL Automatic Saws

# FIGURE 1

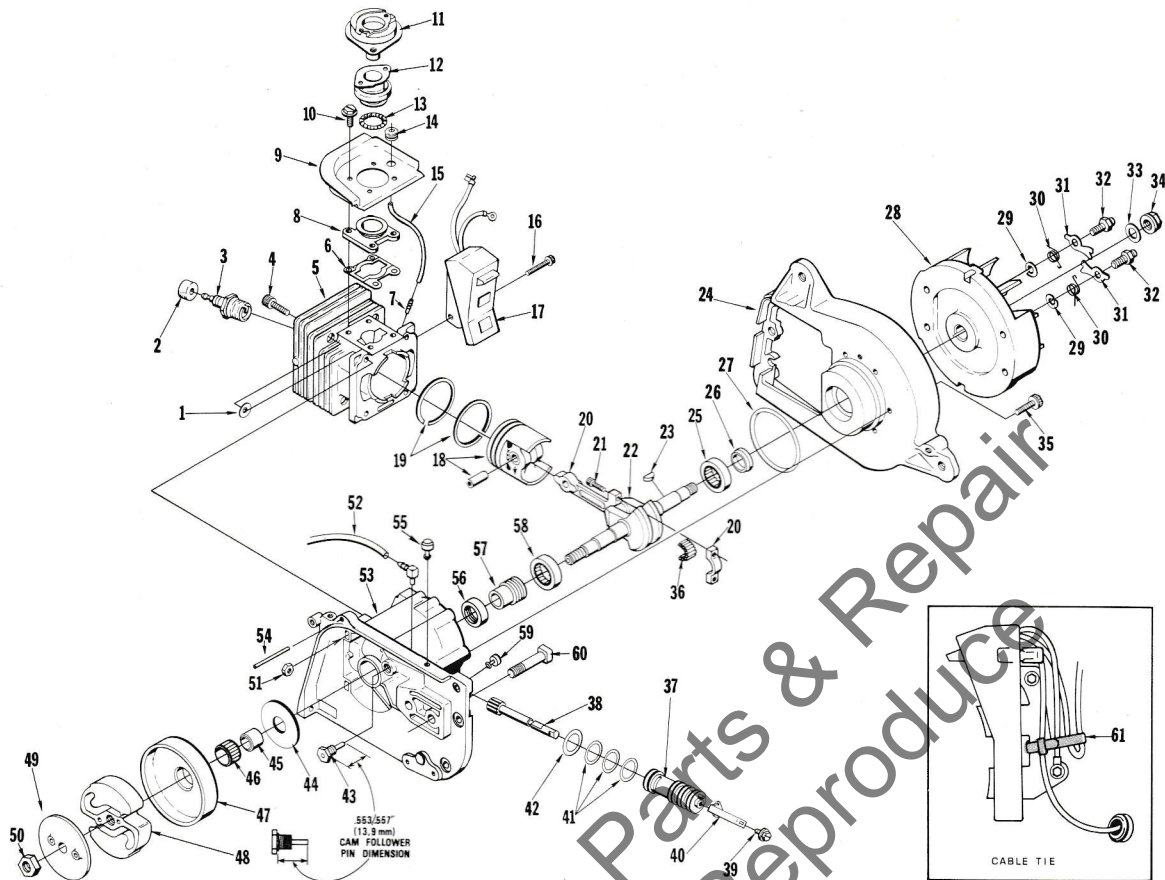


No.	Description	Part No.	Qty.	No.	Description	Part No.	Qty.
1	TRANSFORMER Includes:	A-12299-A	1	26	SHEILD—Spring	12052	1
2	SCREW	70068	2	27	PULLEY&CUP	A-12214	1
	GROMMET (not shown)	12191	1	28	SHIELD—Pulley	12089	1
3	SWITCH—Grounding Includes:	A-57650-3	1	29	WASHER—Spring	70842	1
4	NUT	72084-A1	1	30	BUSHING—Starter cup	12053	1
5	PLATE ("RUN—STOP")	12793-A	1	31	BUMPER—Spiked (accessory)	A-12272-B	1
6	PLUG—Cylinder shield	12283	1		Includes:		
7	SCREW—Hex hd. w/washer 10-24x <sup>3</sup> / <sub>4</sub>	88022	4	32	SCREW—Hex hd. 10-24x <sup>3</sup> / <sub>8</sub>	88031	2
8	SHIELD—Cylinder	12074-2	1	33	SCREW—Hex hd. w/washer 10-24x <sup>5</sup> / <sub>8</sub>	88020	3
9	RECEPTACLE—Transformer	A-70088	1	34	PLATE—Guide bar (inner)	70397	1
10	CONTACT—Ground	70720	1	35	SPRING—Guide bar	69966	1
11	LEAD—Low tension	A-12719	1	36	PLATE—Guide bar (outer)	70398	1
12	CONTACT—Transformer	12788	2	37	PIN—Guide bar adjusting	12133-1	1
13	SCREW—Plastite pan hd. 6x <sup>3</sup> / <sub>8</sub>	82215	2	38	COVER—Drivecase	A-70699	1
14	GROMMET	68279	1		Includes:		
15	HOUSING—Rewind starter Includes:	A-12114-I	1	39	BUSHING	70693	1
	BUSHING—Rope	65185	1	40	ADJUSTER—Guide bar adjusting	A-70694	1
16	ROPE—Starter (40"#4)	12972	1	41	NUT—Hex <sup>5</sup> / <sub>16</sub> —18	81196	2
17	INSERT—Rope retaining	68837-A	1	42	SCREW—Guide bar adjusting	A-12132	1
18	GRIP—Starting rope	64155-B	1	43	COVER—Gear	12134	1
19	SCREW—Hex hd. w/washer 10-24x1 <sup>3</sup> / <sub>8</sub>	88035	1	44	SCREW—Pan washer hd. 6-32x <sup>3</sup> / <sub>8</sub>	82251	2
20	COVER—Starter	12523	1	45	SCREW—8-32x <sup>3</sup> / <sub>8</sub>	88026	3
21	SCREW—Hex hd. w/washer 8-32x <sup>1</sup> / <sub>2</sub>	88027	2	46	PLATE—Exhaust	12195-1	1
22	DECAL—Starter cover	70838	1	47	GASKET—Exhaust plate	12173	1
23	LOCK—Spring	65102	1	48	SCREW—Hex hd. w/washer 10-24x <sup>1</sup> / <sub>2</sub>	88024	1
24	SPRING—Rewind	65107	1	49	MUFFLER—360A0	A-70784	1
					Includes:		
				50	GASKET—Muffler	12080-A	1
				51	SPARK ARRESTOR (accessory)	12270	1



No.	Description	Part No.	Qty.	No.	Description	Part No.	Qty.
1	GRIP—Throttle handle	12049	1	32	SCREW—Hex hd. w/washer 10-24 x 5/16	88020	2
2	PIN—Dowel	70253	3	33	CAP—Oil filler	A-12222	1
3	LEVER—Trigger lock	12092	1		Includes:		
4	SPRING—Torsion	12051	2	34	VALVE—Check (oval duckbill)	69451	1
5	LOCK—Trigger	12093	1	35	FILTER—Filler cap	69454	1
6	KIT—Trigger & screw	A-12966	1	36	GASKET—Oil cap	12126	1
	Includes:			37	CHAIN—Bead	69502	1
7	SCREW—Trigger latch	12094-1A	1	38	SCREW—Pan hd. Plastite 6 x 1/4	82256	1
8	ROD—Throttle	12078-1A	1	39	RETAINER	69503	1
9	LATCH—Trigger	12091-1A	1	40	CAP—FUEL filler	A-69500	1
10	SHAFT—Choke	A-12227	1		Includes:		
11	ROD—Choke	12149-A	1	41	VALVE—Check (oval duckbill)	69451	1
12	BUSHING	12147	1	42	FILTER—Filler cap	69454	1
13	WASHER—Wave	12150	1	43	GASKET—Fuel cap	69501	1
14	KNOB—Choke	12145	1	44	CHAIN—Bead	69502	1
15	SCREW—8-32 x 1/2	88027	1	45	SCREW—Pan hd. Plastite 6 x 1/4	82256	1
16	SCREW—Hex. hd. w/washer 10-24 x 1 3/4	88025	2	46	RETAINER	69503	1
17	NUT—Filter cover mounting	A-12112	1	47	TUBING, RUBBER (fuel) 10 1/2"	70310-42	1
18	BUSHING—Nylon	12110	1	48	PICK-UP—Fuel	A-69923	1
19	COVER—Air filter	12033-3	1		Includes:		
20	NUT—Push-on spring	12140	1	49	FILTER—Felt	64083	1
21	FILTER ELEMENT—Air	A-12225	1		SET—Isolator	A-70622	1
22	PLATE—Spring	12117-1	1		Includes:		
23	BUSHING—Flange	12109-1	1	50	ISOLATOR—Vibration (360 AO)	70228	4
24	GROMMET—"HI-LOW"	12054	1		SET—Isolator	A-70623	1
25	CARBURETOR—HDC 33	A-70745	1		Includes:		
26	BUSHING	A-70923	1	51	ISOLATOR—Vibration (360 HG, SL)	12285	4
	Includes:			51	HOUSING—Engine	A-12286	1
27	GASKET	70743	1		Includes:		
	SET—Isolator pin	A-70624-A	1	52	SCREEN—Air inlet (see note)	12269	1
	Includes:			53	SCREW—Hex hd. w/washer 10-24 x 3/4	88022	3
28	PIN—Isolator	12100-B	4	54	BRACE—Handle	12042-2	1
29	SCREW—Hex hd. w/washer 10-24 x 3/4 (360 AO, SL)	88022	6	55	BUMPER	12096	2
29A	SCREW—Hex hd. w/washer 10-24 x 3/4 (360 HG)	88022	4	56	NUT—Hex 10-24	81208	1
29B	SCREW—(360 HG) #10-24 x 1 3/8	88035	2	57	DEFLECTOR—Air (exhaust)	A-12153	1
30	BRACKET—Handle bar	12059-2	1	58	FITTING—Oil line	12135	1
31	HANDLE BAR	A-12107	1	59	TUBING—Rubber (oil) 4 3/4"	70310-19	1
				60	FINDER—Oil	A-59009-A	1

Note: Remove Screen, index #52 when using Heat Exchanger.

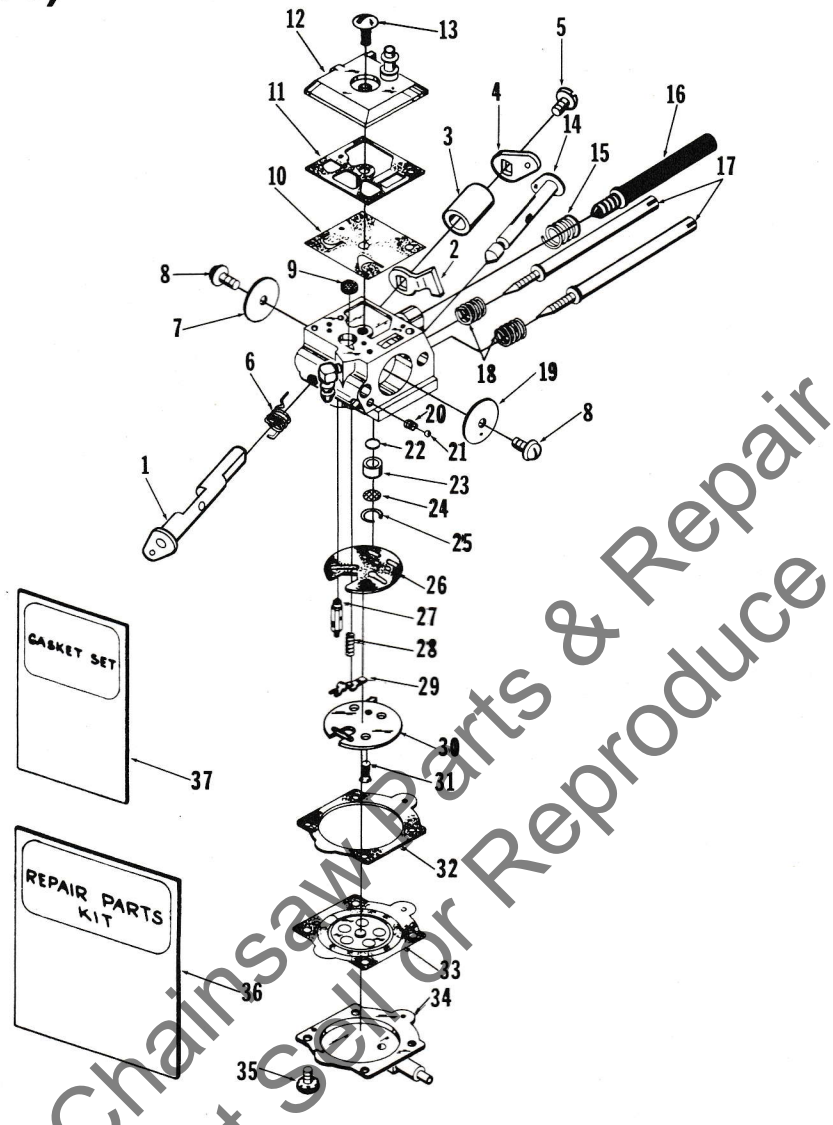


No.	Description	Part No.	Qty.	No.	Description	Part No.	Qty.
1	WASHER	12021	4	36	ROLLERS—Needle (set of 25)	A-12913	1
2	GROMMET—Spark plug	12191	1	37	PUMP—Automatic oiler	A-12201-A	1
3	SPARK PLUG	65130-S	1	38	Includes:		
4	SCREW—Soc. hd. cap # 10-24 x 7/8	82262	4	38	PLUNGER—OIL pump	A-12202	1
5	CYLINDER	A-70716	1	39	SCREW—Hex hd. w/washer 8-32 x 3/8	88026	1
6	Includes:			40	LEVER—Oil adjustment	12141	1
6	GASKET—Intake adapter	70714	1	41	"O" RING	12095	3
7	FITTING	69833	1	42	"O" RING	12155	1
8	MANIFOLD—Intake	70715	1	43	PIN & PLUG	A-12144	1
9	DEFLECTOR—Air (intake)	12161-1B	1	44	WASHER—Thrust	63860	1
10	SCREW—Hex hd. w/washer 8-32 x 1/2	88027	4	44	RACE—Inner	65985-A	1
11	FLANGE—Carburetor connector	12062-1A	1	45	BEARING—Needle	64124	1
12	CONNECTOR—Carburetor	12048-B	1	46	SPROCKET & DRUM—3/8", 7T	A-12294	1
13	SPRING—Garter	12291	1	47	CLUTCH—"S"	68362-4	1
14	GROMMET	62740	1	48	PLATE—Clutch Kit (not shown)	A-70188	1
15	LINE—Pulse 5 1/2"	70310-22	1	Includes:			
16	SCREW—Hex hd. w/washer 8-32 x 1 1/4	82194	2	49	PLATE—Clutch	69915	1
17	MODULE & CORE	12669	1	50	NUT—Clutch plate retaining (7/16-20 L.H.)	70048	1
18	PISTON & PIN	A-12257-A	1	51	NUT—Centerlock # 10-24	81208	4
Includes:				52	TUBING—Rubber (oil) 3/4"	70310-19	1
19	PISTON RING	12040	2	53	CRANKCASE	A-12251-C	1
20	ROD—Connecting	A-12068-1	1	Includes:			
Includes:				54	PIN—Dowel (.125 x 1.375) install in crankcase for chain brake only	(see note ‡)	1
21	SCREW—Soc. hd. 8-32 x 9/16	69919	2	55	FITTING—Oil line	50558	1
22	CRANKSHAFT	12037-1	1	*56	SEAL—(Double lip)	70729	1
23	KEY—Woodruff	75078	1	57	WORM—Gear	12071	1
24	PLATE—Back	A-12204	1	58	BEARING—Roller	63867	1
Includes:				59	BUMPER	12096	2
25	BEARING—Roller	63867	1	60	BOLT—Guide bar 5/16"	58753	2
26	SEAL	70729	1	61	CABLE TIE—Module lead	12298	1
27	"O" RING	58785	1				
28	ROTOR	12101-A	1				
29	WASHER—Lock # 10	83046	2				
30	SPRING—Starter pawl	12055	2				
31	PAWL—Starter	12056	2				
32	STUD—Starter pawl	65109	2				
33	WASHER—3/8	84099	1				
34	NUT—3/8-24	81233	1				
35	SCREW—Hex hd. w/washer 10-24 x 3/4	88022	5				

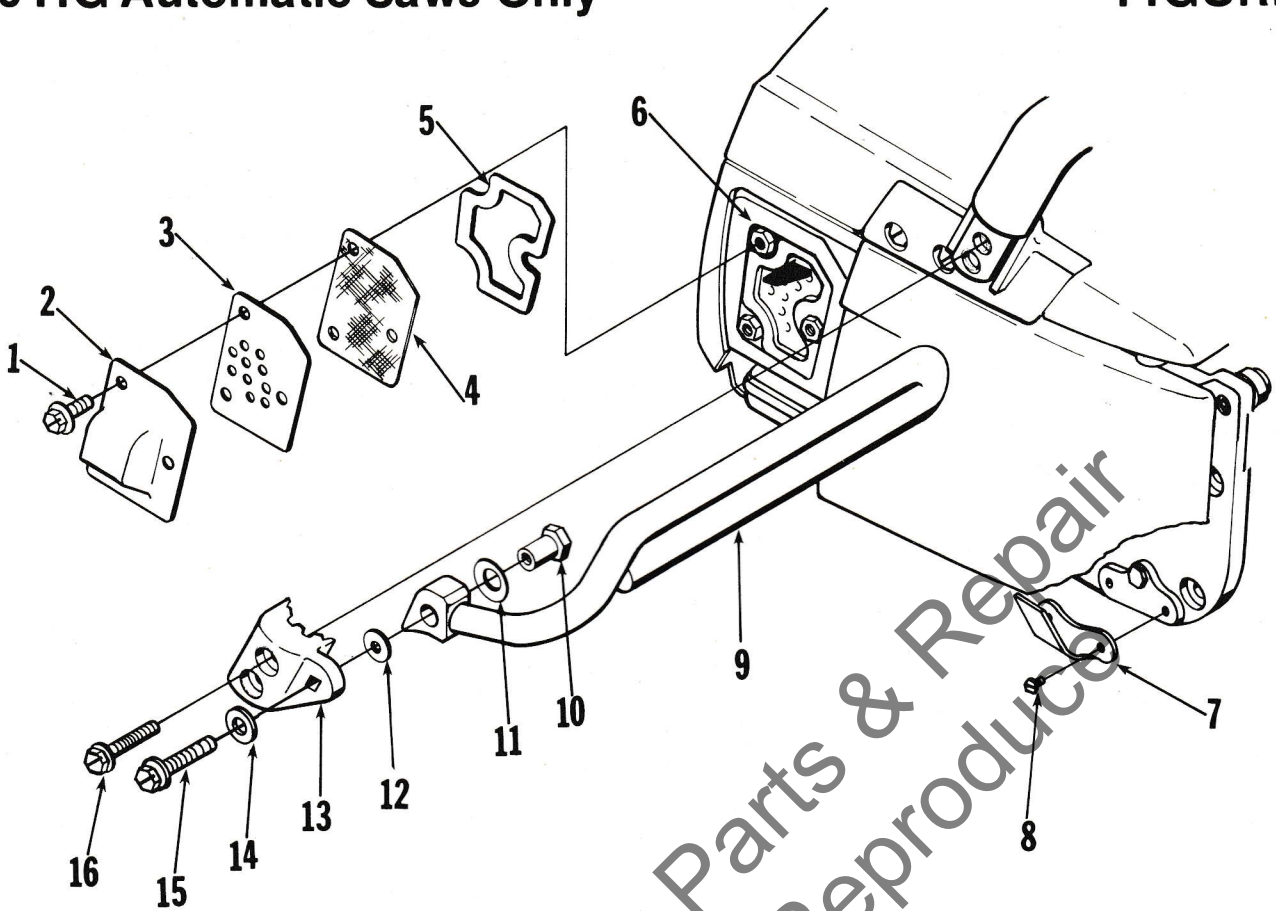
‡See note page 7 Figure 5.

\*Two single seals (12282-A) are being installed back to back until availability of item # 56.

# CARBURETOR A-70745 (HDC 33)



No.	Description	Part No.	Qty.	No.	Description	Part No.	Qty.
	KIT—Throttle shaft	A-12961	1		Includes:		
	Includes:			22	VALVE—Check		1
1	SHAFT—Throttle	12945	1	23	SEAT—Valve		1
2	STOP—Throttle	12943	1	24	SCREEN—Check valve	67381	1
3	SPACER—Throttle	12944	1	25	RING—Screen retaining	67360	1
4	LEVER—Throttle	12942	1	26	GASKET—Circuit plate	±70186	1
5	SCREW—Valve	67372	1	27	NEEDLE—Inlet	+64229	1
6	SPRING—Throttle return	+67376	1	28	SPRING—Metering lever	+70752	1
7	VALVE—Throttle	12289	1	29	LEVER—Metering	+67383	1
8	SCREW—Valve	+67372	1	30	PLATE—Circuit (HDC-33)	70750	1
9	SCREEN—Fuel inlet	+64243	1	31	SCREW—Circuit plate	67375	2
10	DIAPHRAGM—Fuel pump	+67370	1	32	GASKET—Metering diaphragm	±64231	1
11	GASKET—Fuel pump	±67368	1	33	DIAPHRAGM—Metering	+67371	1
12	COVER—Fuel pump	12196	1	34	COVER—Metering diaphragm	12250	1
13	SCREW—Pump cover	67374	1	35	SCREW—Metering cover	64689	4
14	SHAFT—Choke	68632	1	36	REPAIR KIT	70202	1
15	SPRING—Idle adjustment	12199	1	37	GASKET SET	+70203	1
16	SCREW—Idle adjustment	12197	1		Accessories		
17	NEEDLE—Mixture adjustment	+70751	2		DRIVER—Check valve installation	24972	1
18	SPRING—Adjustment needle	+67377	2				
19	VALVE—Choke	67365	1		+ Indicates contents of Repair Kit 70202		
20	SPRING—Choke friction	+64238	1		± Indicates contents of Gasket Set		
21	BALL—Choke friction	+60051	1				
	REPAIR KIT—Check valve (accessory)	65386	1				



No.	Description	Part No.	Qty.	No.	Description	Part No.	Qty.
1	SCREW—8-32 x 3/8	88026	3	9	Includes:		
2	PLATE—Muffler exhaust	12195-1	1	9	GUARD—Hand	A-12243-1	1
3	BAFFLE	12119	1	10	SPACER—Nut	12240	1
4	ARRESTOR—Spark (accessory)	12270	1	11	WASHER—Cupped Spring	12239	1
5	GASKET—Exhaust plate	12173	1	12	WASHER	58851-2	1
6	MUFFLER	A-12265	1	13	BRACKET—Hand guard	12238-1	1
	Includes:			14	WASHER	12296	1
	GASKET—Muffler (shown on Fig. 1)	12080-A	1	15	SCREW—Hex hd. w/washer		
7	STOP—Chain	70705	1		10-24 x 1 1/4	88023	1
8	SCREW—Hex hd. sems 8-32 x 1/2	88027	2	16	SCREW—Hex hd. w/washer		
	KIT—Hand guard	A-12258	1		10-24 x 1 3/8	88035	2

FOR ALL UNITS

ACCESSORIES

ADHESIVE—Lip grip	70627
ARRESTOR—Spark	12270
BUMPER—Spiked	A-12272-B
EXCHANGER—Heat	12253
FILTER ELEMENT—Air	A-69824-A
KIT—Chain Brake	A-12237-B
KIT—Hand guard	A-12258
KIT—Right hand guard	A-12267-A
Includes:	
SCREW—Hex head cap (2)	82275
NUT—Centerlock #10-24 (2)	81208
WASHER (2)	84003-1
KIT—Air restrictor	A-70066
Includes:	
RIVET—Accordion (3)	63848
PLUNGER—Oil pump (high lift)	A-70625
RUBBER—Tubing 10'	70310-99
ROPE—Starter #4, 250 ft. reel	68848

PAINT

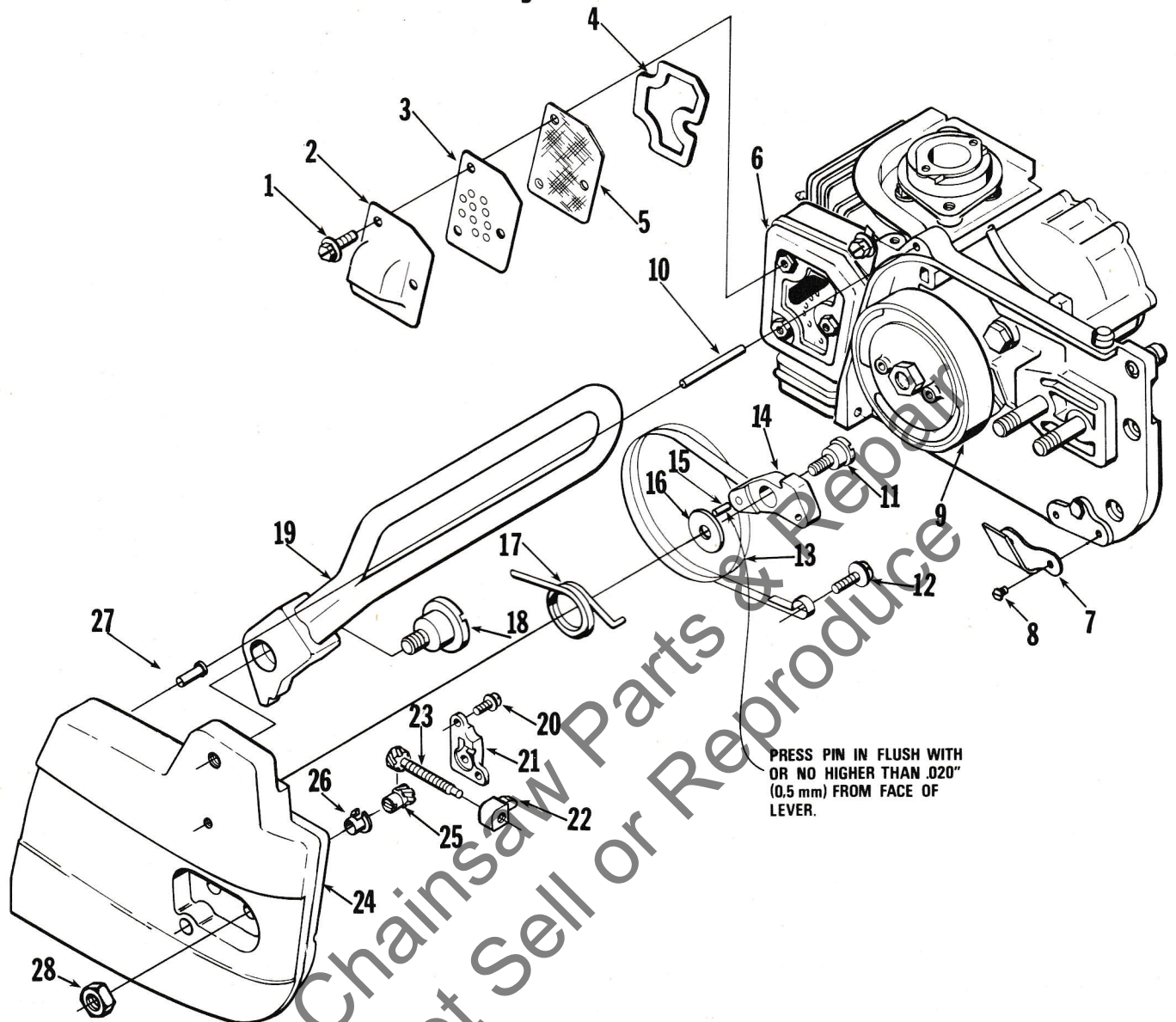
SPRAY CAN—Black	22772
SPRAY CAN—Red	23475

TOOLS

C D Test Lamp	A-24994
ANVIL—Bearing removal (crankcase)	23846-1
ANVIL—Bearing removal (crankcase & backplate)	23846-2
KEY—Hex	22126
KEY—Hex (HG-SL)	23528
PLUG—Bearing & seal installation & removal	24827-A
PLUG—Seal installation	24826-A
PULLER—Rotor	A-24290
Includes:	
SCREW—Rotor removal	24301
RING—Retaining	67912
SHIM—Yellow plastic (.020)	24853
SLEEVE—Seal assembly (crankcase & backplate)	23759
SLEEVE—Seal removal (crankcase)	23136-6
TOOL & PLUNGER—Piston pin	A-24871
WRENCH—Socket	68651
WRENCH—Spanner ("S" clutch)	A-23697-A
Includes:	
PIN	23717-A
SCREW DRIVER	24541
ALIGNMENT—Plug pump	24868

# 360 SL Automatic Saws Only

# FIGURE 5



No.	Description	Part No.	Qty.
1	SCREW—Hex hd. w/ washer, 8-32x <sup>3</sup> / <sub>8</sub>	88026	3
2	PLATE—Muffler exhaust	12195-1	1
3	BAFFLE	12119	1
4	GASKET—Exhaust plate	12173	1
5	ARRESTOR—Spark (accessory)	12270	1
6	MUFFLER	A-12265	1
	Includes:		
	GASKET—Muffler (shown on Fig. 1)	12080-A	1
7	STOP—Chain	70705	1
8	SCREW—Hex hd. sems 8-32x <sup>1</sup> / <sub>2</sub>	88027	2
	KIT—Chain brake	A-12237-B	1
	Includes:		
9	SPROCKET & DRUM— <sup>3</sup> / <sub>8</sub> " , 7T	A-70528	1
10	PIN—Dowel (.125x750 lg.)	(see note ‡)	
11	SCREW—Shoulder	12371-1	1
12	SCREW—Pan hd., <sup>1</sup> / <sub>4</sub> -20x <sup>5</sup> / <sub>8</sub>	82258	1
13	BRAKE BAND	12950-1	1
14	LEVER, Brake band	12372-2	1
15	PIN	67911	1
16	WASHER—Spring retaining	12290	1

No.	Description	Part No.	Qty.
17	SPRING—Torsion	70093-A	1
18	SCREW—Shoulder (brake lever)	12955	1
19	LEVER—Brake w/guard	A-12952	1
20	SCREW—Pan washer hd., 6-32x <sup>3</sup> / <sub>8</sub>	82251	2
21	COVER—Gear	12134	1
22	PIN—Guide bar adjusting	12133-1	1
23	SCREW—Guide bar adjusting	A-12132	1
24	COVER—Drivecase	A-70706	1
	Includes:		
25	ADJUSTER—Guide bar	A-70694	1
26	BUSHING	70693	1
27	SLEEVE—Headed	70313	1
28	NUT—Hex, <sup>5</sup> / <sub>16</sub> -18	81196	2

‡Pin #10 supplied "loose" in SL Chainbrake Kit and 360 Service crankcase assembly. Not available separately. For Chainbrake mounting only, press pin into hole provided in crankcase boss until there is .375" (09, 5mm) remaining for engagement of pin in chainbrake drivecase cover. Pin is required only for chainbrake.

Part No.	Description	Qty.	Part No.	Description	Qty.	Part No.	Description	Qty.	Part No.	Description	Qty.
12021	Washer# 10	4	A-12227	Shaft	1	A-24994	CD Lamp	1	A-70188	Plate	1
12033-3	Cover	1	A-12237-B	Kit	1	50558	Fitting	1	70202	Kit	1
12037-1	Crankshaft	1	12238-1	Bracket	1	A-57650-3	Switch	1	70203	Gasket	1
12040	Piston Ring	2	12239	Washer	1	58753	Bolt— $\frac{9}{16}$	3	70228	Isolator (360 AO)	4
12042-2	Brace	1	12240	Spacer	1	58785	"O" Ring	1	70253	Pin	3
12048-B	Connector	1	A-12243-1	Guard	1	58851-2	Washer	1	70310-19	Tubing (Oil)	3
12049	Grip	1	12249	Spring	1	A-59009-A	Filter	1	70310-22	Tubing	1
12051	Spring	2	12250	Cover	1	60051	Ball—Choke	1	70310-42	Tubing	1
12052	Shield	1	A-12251-C	Crankcase	1	62740	Grommet	1	70310-99	Tubing	1
12053	Bushing	1	12253	Exchanger	1	63848	Plug	3	70313	Sleeve	1
12054	Grommet	1	A-12257-A	Piston & Pin	1	63860	Washer	1	70397	Plate (Inner)	1
12055	Spring	2	A-12258	Kit	1	63867	Bearing	2	70398	Plate (Outer)	1
12056	Pawl	2	A-12265	Muffler	1	64083	Filter	1	A-70528	Sprocket	1
12059-2	Bracket	1	A-12267-A	Kit	1	64124	Bearing	1		& Drum $\frac{3}{8}$ " 7T	1
12062-1A	Flange	1	12269	Screen	1	64155-B	Grip	1	A-70622	Kit	1
A-12068-1	Connecting Rod	1	12270	Arrestor	1	64229	Needle	1	A-70623	Kit	1
12071	Worm	1	A-12272-B	Bumper	1	64231	Gasket	1	A-70624-A	Kit	1
12074-2	Shield	1	12277	Plate	1	64238	Spring	1	A-70625	Plunger	1
12078-1A	Rod	1	12283	Plug	1	64243	Screen	1	70627	Adhesive	1
12080-A	Gasket	1	12285	Isolator	4	64689	Screw	4	70693	Bushing	2
12089	Shield	1	A-12286	Housing	1	65102	Lock	1	A-70694	Adjuster (SL)	2
12091-1A	Latch	1	12289	Valve	1	65107	Spring	1	A-70699	Cover	1
12092	Lever	1	12290	Washer	2	65109	Stud	2	70705	Stop	1
12093	Lock	1	12291	Spring	1	65130-S	Spark Plug	1	A-70706	Cover (SL)	1
12094-1A	Screw	1	12296	Washer	1	65185	Bushing	1	70714	Gasket	1
12095	"O" Ring	3	12298	Cable	1	65386	Kit	1	70715	Manifold	1
12096	Bumper	2	A-12299-A	Transformer & Grommet	1	65985-A	Race	1	A-70716	Cylinder	1
12100-B	Pin	4				67360	Ring	1	70720	Contact	1
12101-A	Rotor	1	12371-1	Screw	1	67365	Valve	1	70729	Seal	1
A-12107	Handle Bar	1	12372-2	Lever	1	67368	Gasket	1	70743	Gasket	1
12109-1	Bushing	1	12523	Cover	1	67370	Diaphragm	1	A-70745	Carburetor (HDC 33)	1
12110	Bushing	1	12669	Module & Core	1	67371	Diaphragm	1	70750	Plate	1
A-12112	Nut-Filter Cover	1	A-12719	Lead	1	67372	Screw	3	70751	Needle	2
A-12114-1	Housing	1	12788	Contact	2	67374	Screen	1	70752	Spring	1
12117-1	Plate	1	12793-A	On-Off Plate	1	67375	Screw	2	A-70784	Muffler (360 AO)	1
12119	Baffle	1	A-12913	Bearing	1	67376	Spring	1	70838	Decal	1
12126	Gasket	1	12942	Lever	1	67377	Spring	2	70842	Washer	1
A-12132	Screw	1	12943	Stop	1	67381	Screen	1	A-70923	Bushing	1
12133-1	Pin	1	12944	Spacer	1	67383	Lever	1	72084-A1	Nut	1
12134	Cover	1	12945	Shaft	1	67911	Pin	1	75078	Key	1
12135	Fitting	1	12950-1	Brake Band	1	67912	Ring	1			
A-12137	Adjuster	1	A-12952	Lever	1	68279	Grommet	1			
12140	Nut	1	12955	Screw	1	68362-4	Clutch—S	1			
12141	Lever	1	A-12961	Kit	1	68632	Shaft	1	<b>FASTENING PARTS</b>		
A-12144	Pin & Plug	1	A-12966	Kit	1	68651	Wrench	1	81196	Nut— $\frac{5}{16}$ -18	4
12145	Knob	1	12972	Rope	1	68837-A	Insert	1	81208	Nut—10-24	5
12147	Bushing	1	22126	Wrench	1	68848	Rope	1	81233	Nut— $\frac{3}{8}$ -24	1
12149-A	Rod	1	22772	Paint	1	69451	Valve	1	82194	8-32 x $\frac{1}{4}$	2
12150	Washer	1	23136-B	Sleeve	2	69454	Filter	3	82215	6 x $\frac{3}{8}$	2
A-12153	Deflector	1	23475	Paint	1	A-69500	Cap	1	82251	6-32 x $\frac{3}{8}$	4
12155	"O" Ring	1	23528	Wrench	1	69501	Gasket	1	82256	6 x $\frac{1}{4}$	2
12161-1B	Deflector	1	A-23696-A	Wrench	1	69502	Chain	2	82258	$\frac{1}{4}$ -20 x $\frac{5}{8}$	1
12173	Gasket	1	23759	Sleeve	1	69503	Retainer	2	82262	10-24 x $\frac{7}{8}$	4
12176-1	Plate	1	23747-A	Pin	1	A-69824-A	Filter	1	82275	10-24 x $\frac{3}{8}$	1
12191	Grommet	1	23846-1	Anvil	1	69833	Fitting	1	83046	Washer #10	2
12195-1	Plate	1	23846-2	Anvil	1	69915	Plate	1	84003-1	Washer #10	1
12196	Cover	1	A-24290	Puller	1	69919	Screw	2	84099	Washer— $\frac{3}{8}$	1
12197	Screw	1	24301	Screw	1	A-69923	Filter	1	88020	10-24 x $\frac{5}{8}$	5
12199	Spring	1	24541	Screwdriver	1	69966	Spring	1	88022	10-24 x $\frac{3}{4}$	22
A-12201-A	Pump	1	24826-A	Plug	1	70048	Nut $\frac{7}{16}$ -20 LH	1	88023	10-24 x $\frac{1}{4}$	4
A-12202	Plunger	1	24827-A	Plug	1	A-70066	Plug	1	88024	10-24 x $\frac{1}{2}$	3
A-12204	Plate	1	24853	Shim	1	70068	Kit	1	88025	10-24 x $\frac{3}{4}$	2
A-12214	Pulley & Cup	1	24868	Plug	1	A-70088	Screw	2	88026	8-32 x $\frac{3}{8}$	7
A-12222	Cap	1	A-24871	Tool & Plunger	1	70093-A	Receptacle	1	88027	8-32 x $\frac{1}{2}$	9
A-12225	Filter Element	1	24972	Driver	1	70186	Spring	1	88031	10-24 x $\frac{3}{8}$	2
									88035	10-24 x $\frac{1}{8}$	5

# HOMELITE TEXTRON

Homelite Division of Textron Inc.