

PART NO. 17080 REV. 2

Printed in U.S.A.

PRICE .35

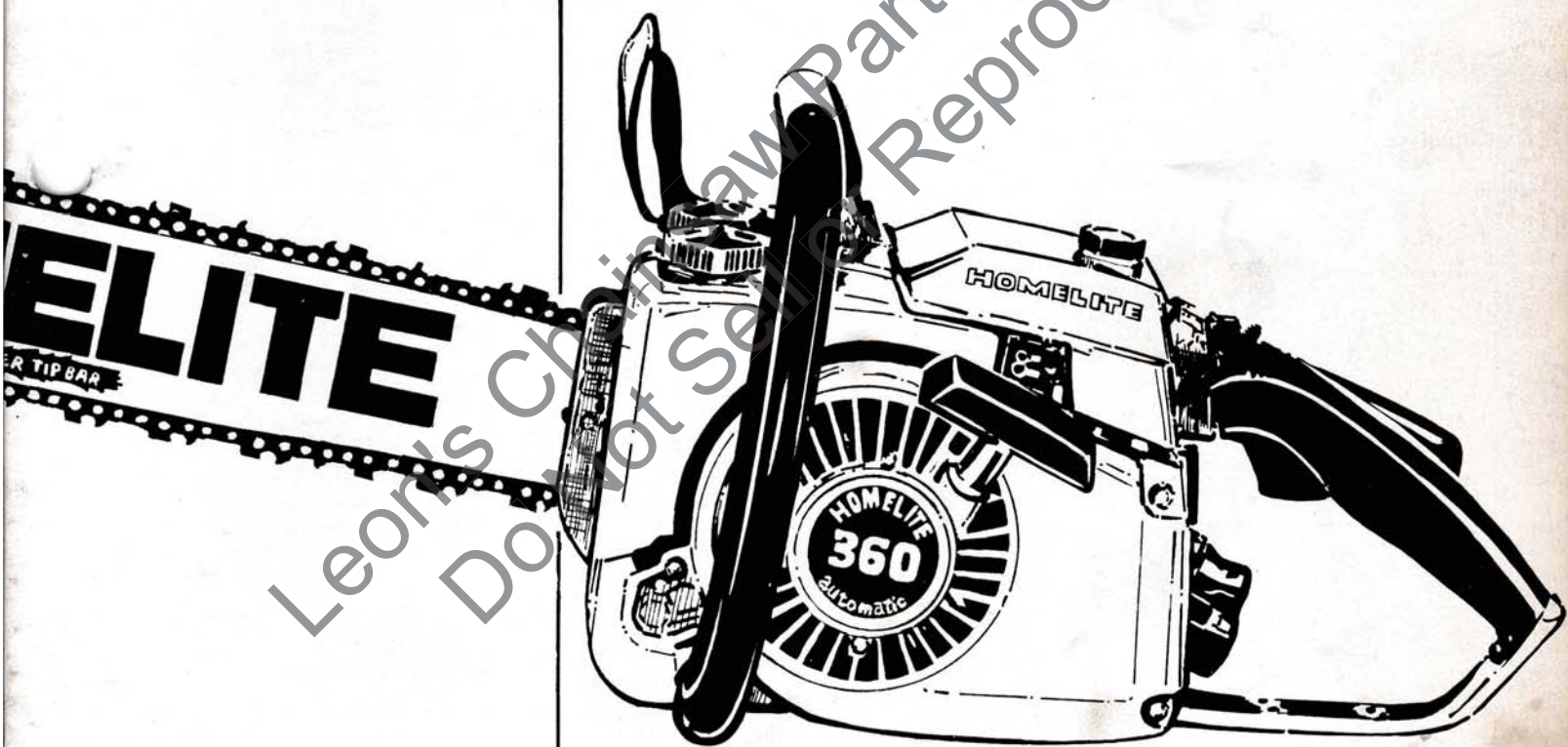


HOMELITE®

360

**automatic
CHAIN SAW**

MODELS 360, 360HG, 360SL, 360W



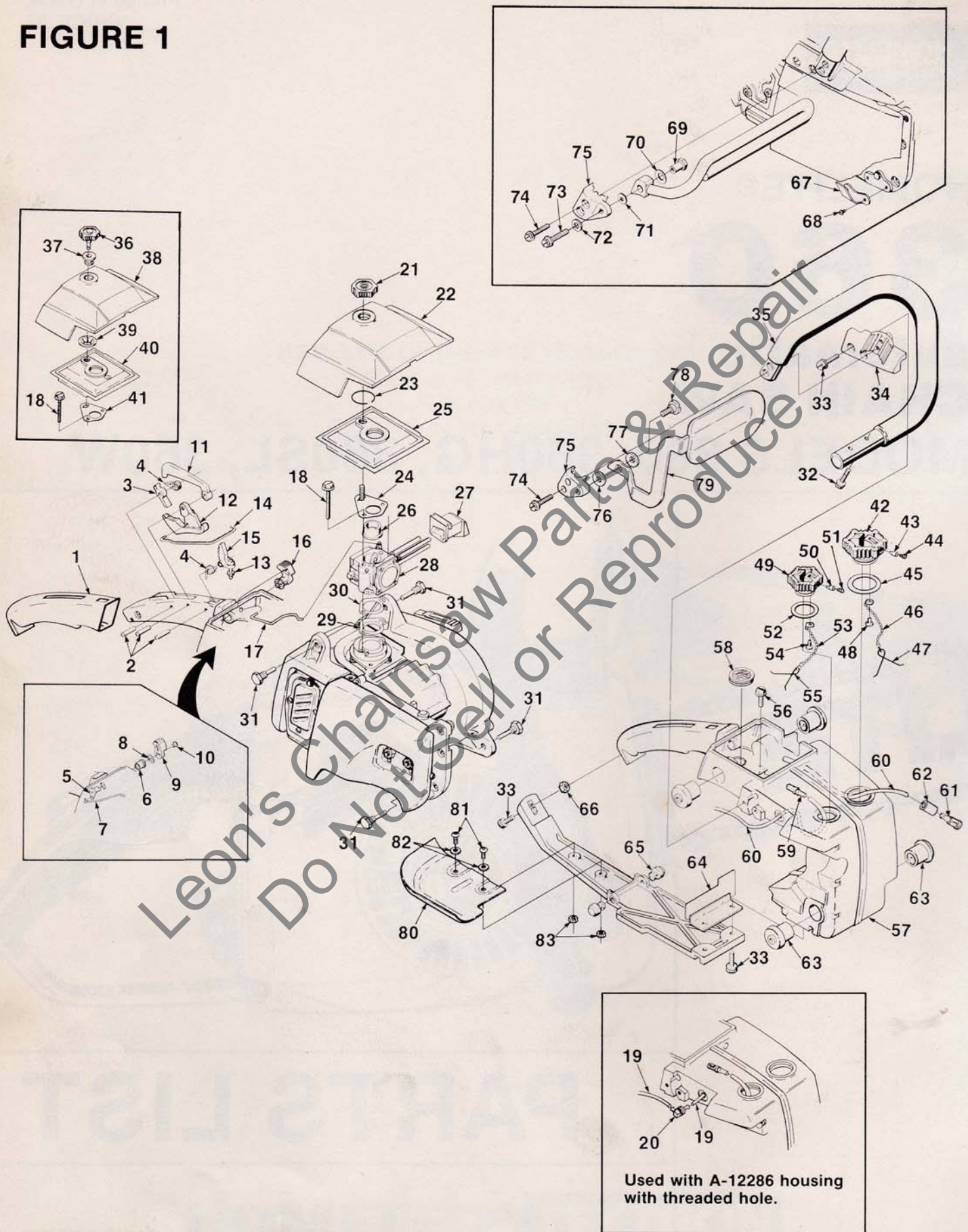
PARTS LIST

HOMELITE TEXTRON

Homelite Division of Textron Inc.

360 Automatic Saws

FIGURE 1



19
20
19

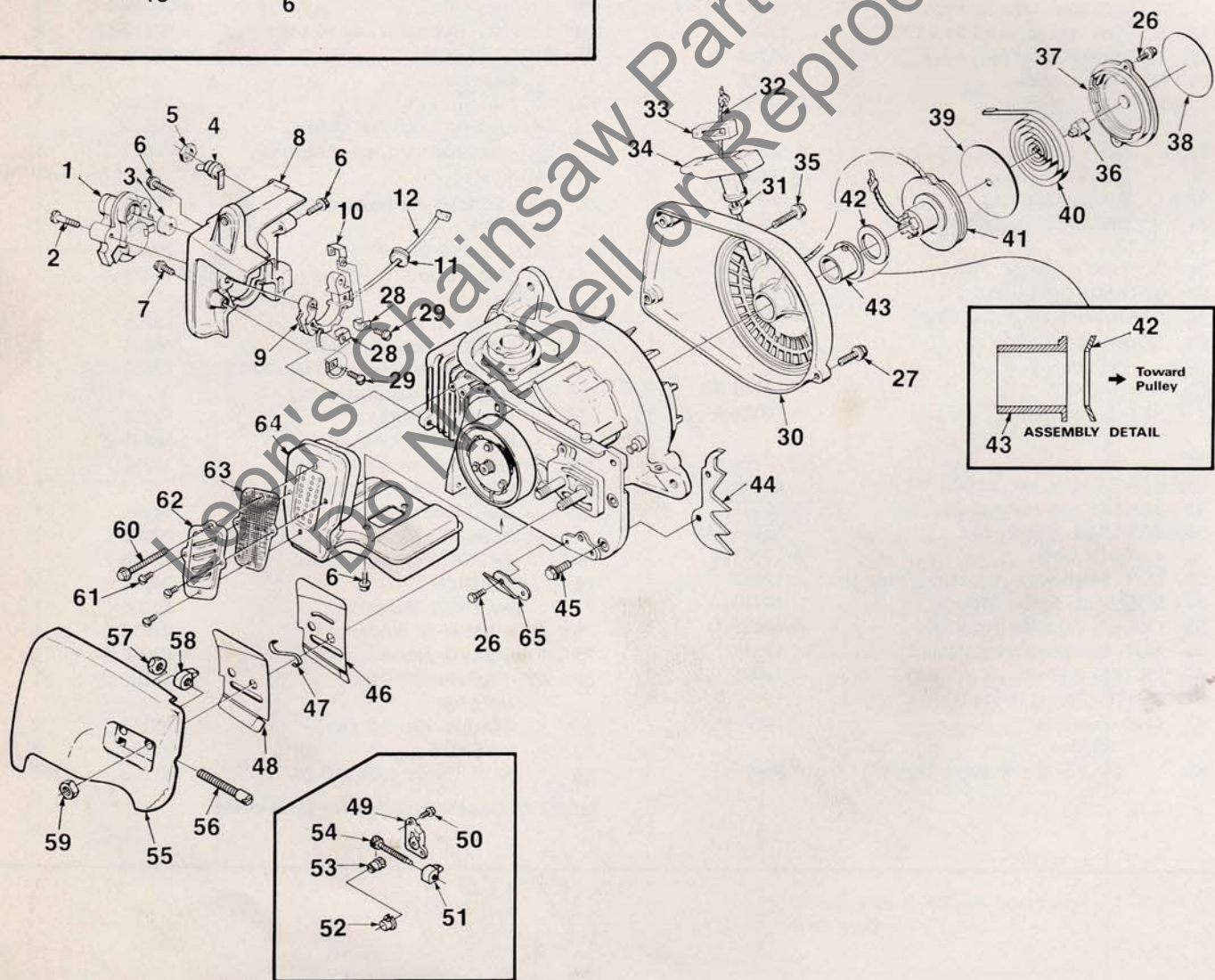
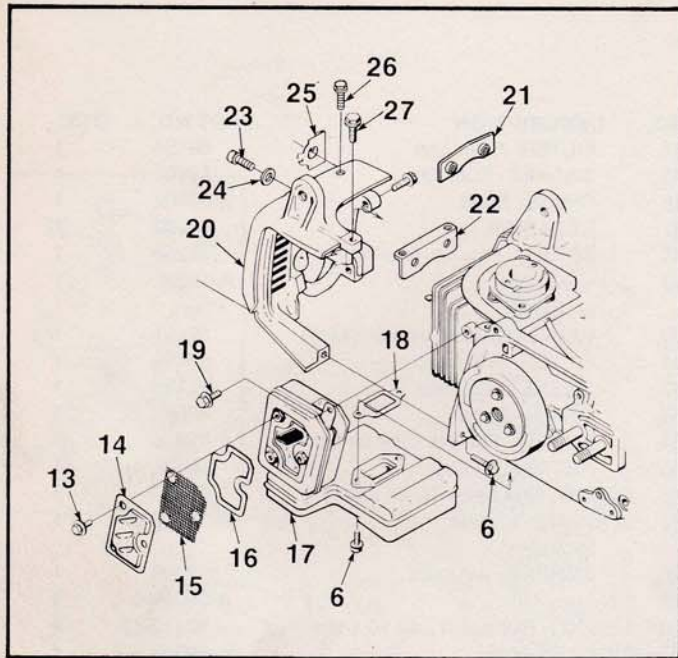
Used with A-12286 housing with threaded hole.

NO.	DESCRIPTION	PART NO.	QTY.	NO.	DESCRIPTION	PART NO.	QTY.
1	GRIP- Throttle handle	12049	1	44	FILTER- Filler cap	69454	1
2	PIN- Dowel	70253	3	45	GASKET- Fuel cap	69501	1
3	LEVER- Trigger lock	12092	1	46	CHAIN- Bead	69502	1
4	SPRING- Torsion	12051	2	47	RETAINER	96535	1
5	SHAFT- Choke (prior to lot # 1054)	A-12227	1	48	SCREW- Pan hd. plastite 6 x 1/4	82256	1
6	BUSHING (prior to lot #1054)	12147	1	49	CAP- Oil filler	A-12222	1
7	ROD- Choke (prior to lot #1054)	12149-A	1		Includes:		
8	WASHER- Wave (prior to lot #1054)	12150	1	50	VALVE- Check (oval duckbill)	69451	1
9	KNOB- Choke (prior to lot #1054)	12145	1	51	FILTER- Filler cap	69454	1
10	SCREW- 8-32 x 1/2 (prior to lot #1054)	88042	1	52	GASKET- Oil cap	12126	1
11	LOCK- Trigger	12093	1	53	CHAIN- Bead	69502	1
12	KIT- Trigger & Screw	A-12966	1	54	SCREW- Pan hd. plastite 6 x 1/4	82256	1
	Includes:			55	RETAINER- Cap	96535	1
13	SCREW- Trigger latch	12094-1A	1	56	SCREW- Hex sems 10-24 x 5/16	88050	2
14	ROD- Throttle	12078-1A	1	57	HOUSING- Engine	A-12286-B	1
15	LATCH- Trigger	12091-1A	1		Includes:		
16	KNOB- Choke (After lot #1054)	94765	1	58	SCREEN- Air inlet	12269	1
17	ROD- Choke (After lot #1054)	94977	1	59	FINDER- Oil	A-59009-A	1
18	SCREW- Hex sems 10-24 x 1.75	93460	2	60	TUBING- Rubber (Fuel) 10 1/2"	93112-42	2
19	TUBING- Rubber (oil) 4 3/4"	93112-19	2	61	PICK-UP- Fuel	A-69923	1
20	FITTING- Oil line	12135	1		Includes:		
	KIT- Air filter cover	A-94055-A	1	62	FILTER- Felt	64083	1
	Includes:			63	SET- Isolator- soft (set of four)	A-70623	1
21	NUT- Filter cover mtg.	A-67639-2	1		SET- Isolator-hard (set of four)	A-70622	1
22	COVER- Filter	12033-2A	1		(Alternate)		
23	RING- Retaining	58819-A	1	64	DEFLECTOR- Air (exhaust)	A-12153	1
24	BRACKET- Mounting cover	A-93240	1	65	BUMPER	12096	2
25	FILTER- Air	A-12225-1	1	66	NUT- Hex 10-24	70810	1
26	BUSHING- Flange	12109-1	1		KIT- Hand guard	A-93967-A	1
27	GROMMET- HI-LOW	12054	1		Includes:		
28	CARBURETOR- (HDC-39-A)	A-97801	1	67	STOP- Chain	70705	1
29	BUSHING	A-70923-A	1	68	SCREW- Hex sems 8-32	88042	2
	Includes:			69	SPACER- Nut (prior to lot #9240)	12240	1
30	GASKET	70743-A	1	70	WASHER- Cupped spring		
	SET- Isolator pin	A-70624-A	1		(prior to lot #9240)	12239	1
	Includes:			71	WASHER (prior to lot #9240)	58851-2	1
31	PIN- Isolator	12100-B	4	72	WASHER (prior to lot #9240)	12296	1
32	SCREW- Soc. hd. 10-24 x 7/8	82262	4	73	SCREW- Hex sems 10-24 x 1 1/4		
33	SCREW- Hex sems 10-24 x 3/4	88051	3		(prior to lot #9240)	88054	1
34	BRACKET- Handle bar	12059-2A	1	74	SCREW- Hex sems 10-24 x 1 3/8	88055	2
35	HANDLE BAR	A-12107-A	1	75	BRACKET- Hand guard	12238-3	1
36	NUT- Filter cover mounting (Note 1)	A-12112	1	76	WASHER	94867	1
37	BUSHING- Nylon (Note 1)	12110	1	77	WASHER- Belleville	70788	1
38	COVER- Air filter (Note 1)	A-94055-A	1	78	SCREW- Shoulder	93914	1
39	NUT- Push on spring (Note 1)	12140	1	79	GUARD- Hand	A-93968-A	1
40	FILTER- Element air (Note 1)	A-12225	1	80	KIT- Right hand guard	A-12267-B	1
41	PLATE- Spring (Note 1)	12117-1	1		Includes:		
42	CAP- Fuel filler	A-69500-A	1	81	SCREW- Hex hd. cap	82275	2
	Includes:			82	WASHER	84003	2
43	VALVE- Check (oval duckbill)	69451	1	83	NUT- Center lock #10-24	81208	2

NOTE 1: Used with units prior to lot #8138.

360 Automatic Saws

FIGURE 2



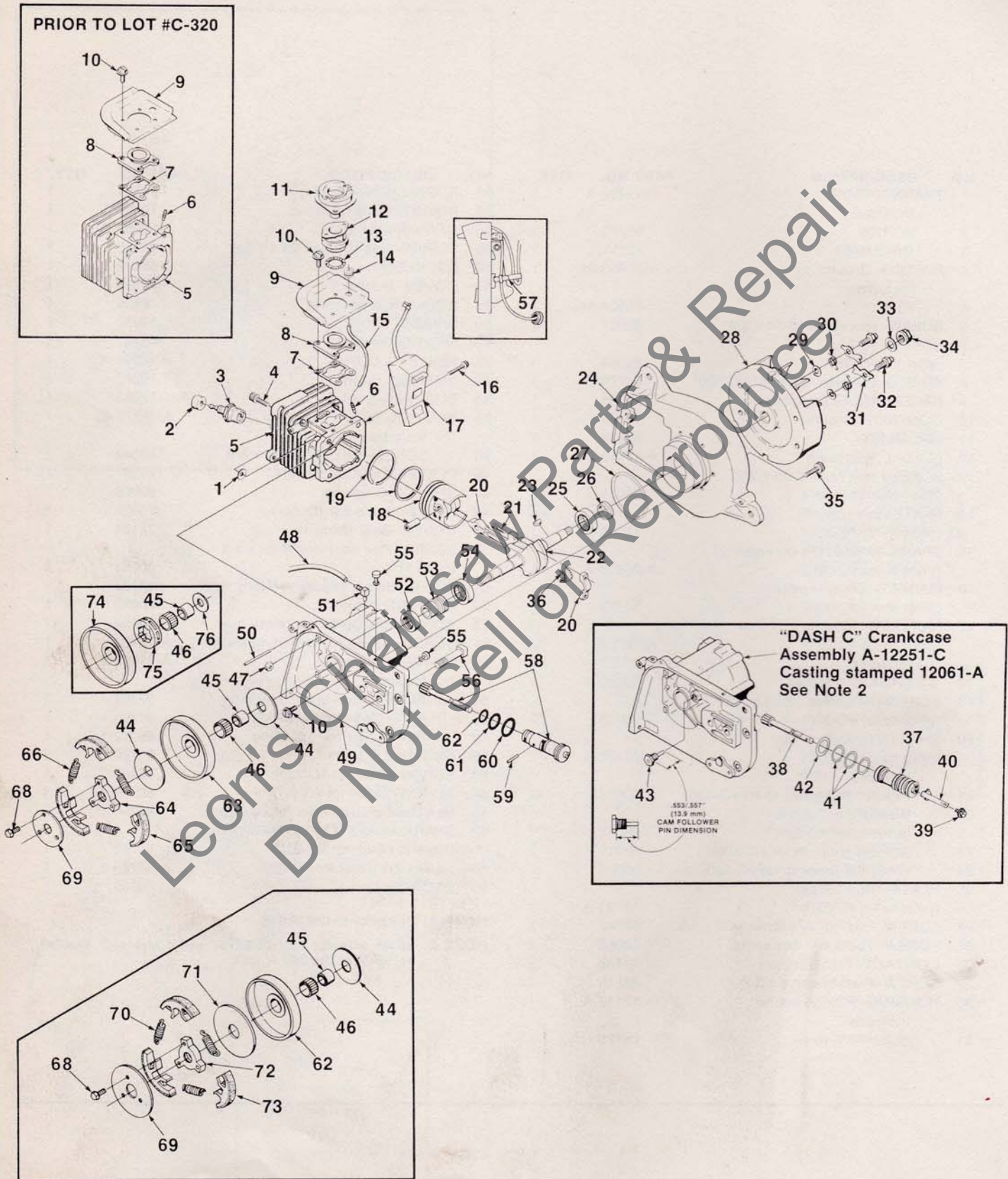
NO.	DESCRIPTION	PART NO.	QTY.	NO.	DESCRIPTION	PART NO.	QTY.
1	TRANSFORMER	A-12299-A	1	32	ROPE- Starter (38" #4)	94564	1
	Includes:			33	INSERT- Rope retaining	70018-A	1
2	SCREW	95270	2	34	GRIP- Starter rop	A-69962-B	1
3	GROMMET	12191	1	35	SCREW- Hex sems 10-24 x 1 3/8	88055	1
4	SWITCH- Grounding	A-57650-3A	1	36	LOCK- Spring	65102	1
	Includes:			37	COVER- Starter	12523	1
5	NUT	72084-1A	1	38	DECAL- Starter cover	70838	1
6	SCREW- Hex sems 10-24 x 3/4	88051	4	39	SPRING- Shield	12052	1
7	SCREW- 10-24 x 1 1/4 (after lot #C-320)	88054	3	40	SPRING- Rewind	65107	1
8	SHIELD- Cylinder (after lot #C-320)	94779-2	1	41	PULLEY & CUP	A-12214-A	1
9	RECEPTACLE- Transformer	A-70088	1	42	WASHER- Spring	70842	1
10	CONTACT- Ground	70720	1	43	BUSHING- Starter	12053	1
11	GROMMET	68279	1	44	BUMPER- Spiked (accessory)	A-12272-C	1
12	LEAD- Low tension	A-12719-B	1		Includes:		
13	SCREW- Hex sems 8-32 x 3/8 (Prior to lot #C-320)	88041	3	45	SCREW- Hex hd. 10-24 x 3/8	88048	2
14	PLATE- Exhaust (W) (prior to lot #C-320)	12176-1	1	46	PLATE- Guide bar (Inner)	70397	1
15	SPARK ARRESTOR (Accessory) (prior to lot #C-320)	A-93898-A	1	47	SPRING- Guide bar	69966	1
16	GASKET- Exhaust plate (prior to lot #C-320)	12173	1	48	PLATE- Guide bar (Outer)	70398	1
17	MUFFLER- 360 AO (prior to lot #C-320)	A-70784	1	49	COVER- Gear (Note 1)	12134	1
	Includes:			50	SCREW- Pan hd. mach 6-32 x 3/8 (Note 1)	82251	2
18	GASKET- Muffler	12080-A	1	51	PIN- Guide bar adjusting (Note 1)	12133-1	1
19	SCREW- Hex sems 10-24 x 1/2 (prior to lot #C-320)	88049	1	52	BUSHING (Note 1)	70693	1
20	SHIELD- Cylinder (prior to lot #C-320)	A-93128-A	1	53	ADJUSTER- Guide bar (Note 1)	A-70694	1
	Includes:			54	SCREW- Guide bar adjusting (Note 1)	A-12132	1
21	PLATE- Nut (prior to lot #C-320)	93075	1	55	COVER- Drivecase	A-93930-2	1
22	BRACKET- Cylinder (prior to lot #C-320)	93063	1		Includes:		
23	SCREW (prior to lot #C-320)	69919	2	56	SCREW- Guide bar adjusting	93962	1
24	WASHER (prior to lot #C-320)	93073	2	57	NUT- Centerlock (10-32)	81206	1
25	PLATE- (Run - Stop) (prior to lot #C-320)	12793-A	1	58	PIN- Guide bar adjusting	65112-1	1
26	SCREW- Hex hd. w/washer 8-32 x 1/2	88042	2	59	NUT- Hex 5/16-18	81196	2
27	SCREW- 10-24 x 1" hex sems	88053	2	60	SCREW (After lot #C-320)	93460	1
28	CONTACT- Transformer	12788	2	61	SCREW- (After lot #C-320)	82370	3
29	SCREW- Plastite pan 6 x 3/8	82215	2	62	PLATE- Exhaust (After lot #C-320)	94796-1	1
30	HOUSING- Rewind starter	A-12112-A	1	63	SPARK ARRESTOR SCREEN (Opt.) (Note 2) (After lot #C-320)	94797	1
	Includes:			64	MUFFLER (After lot #C-320)	A-94785-1	1
31	BUSHING- Rope	65185	1	65	STOP- Chain	70705	1

NOTE 1: Use prior to Lot #8044.

NOTE 2: Spark arrestor screen 94797 will come with muffler 94796-1 for the 360 W units.

360 Automatic Saws

FIGURE 3



NO.	DESCRIPTION	PART NO.	QTY.	NO.	DESCRIPTION	PART NO.	QTY.
1	WASHER	12021	4	49	CRANKCASE (Note 1)	A-12251-D	1
2	GROMMET- Spark plug	12191	1		Includes:		
3	SPARK PLUG (Champ CJ6)	63547-S	1	50	PIN- Dowel (.125 x 1.375)		
4	SCREW- Soc. hd. cap #10-24 x 7/8	82262	4		Install in crankcase	See Note *	1
5	CYLINDER (Prior to lot #C-320)	A-70716-A	1		for chain brake only		
	(Includes index Nos. 6 thru 10)			51	FITTING- Oil line	50558	1
	CYLINDER (After lot #C-320)	A-94781	1	52	SEAL- (Double lips)	70729	1
	Includes:			53	WORM- Gear	12071	1
6	FITTING	69833	1	54	BEARING- Roller	63867	1
7	GASKET- Intake adapter	70714	1	55	BUMPER	12096	2
8	MANIFOLD- Intake	70715	1	56	BOLT- Guide bar 5/16"	58753	2
9	DEFLECTOR- Air (Intake)	12161-1B	1	57	CABLE TIE- Module lead	12298	1
10	SCREW- Hex hd. w/washer 8-32 x 1/2	88042	5	58	PUMP- Automatic Oil (Note 1)	A-70962	1
11	FLANGE- Carburetor connector	A-70246-B	1		Includes:		
12	CONNECTOR- Carburetor	12048-C	1	59	PIN- Pump	70920	1
13	SPRING- Garter	12291	1	60	"O" RING	70921	1
14	GROMMET	62740	1	61	"O" RING	12853	1
15	LINE- Pulse 5 1/2"	93112-22	1	62	"O" RING	12095	1
16	SCREW- Hex sems 8-32 x 1 1/4	88045	2	63	SPROCKET & DRUM		
17	MODULE & CORE	12669-A	1		7T, 3/8 P (Note 2)	A-95465	1
18	PISTON & PIN	A-12257-A	1		KIT- Clutch conversion	A-93867-A	1
	Includes:				Includes:		
19	PISTON RING	12040	2	64	SPIDER- Clutch (After lot #C-320)	96448	1
20	ROD- Connecting	A-12068-1	1	65	SHOE- Clutch (After lot #C-320)	A-96447	3
	Includes:			66	SPRING- Extension		
21	SCREW- Soc. hd. 80-32 x 9/16	69919	2		(After lot #C-320)	96451	3
22	CRANKSHAFT	12037-1	1	67	COVER- Clutch (After lot #C-320)	96449	1
23	KEY- Woodruff	75078	1	68	SCREW- Hex sems 8-32 x .375	88041	1
24	PLATE- Back	A-12204-A	1	69	COVER- Clutch (Prior to lot #C-320)	93628	1
	Includes:			70	SPRING- Clutch (Prior to lot #C-320)	93638-A	3
25	BEARING- Roller	63867	1	71	WASHER- Thrust (Prior to lot #C-320)	93643	1
26	SEAL	12282-A	1	72	SPIDER- Clutch (Prior to lot #C-320)	93636	1
27	"O" RING	58785	1	73	SHOE- Clutch (Prior to Lot #C-320)	A-93632-A	3
28	ROTOR	12101-A	1	74	DRUM & HUB (Note 2)	A-94302	1
29	WASHER- Lock #10	83046	2	75	SPROCKET & RIM 7T 3/8 P		
30	SPRING- Starter pawl	12055	2		(Primary source)	95058	1
31	PAWL- Starter	12056	2		SPROCKET & RIM 7T, 3/8 P		
32	STUD- Starter pawl	65109	2		(Alternate source)	63284	1
33	WASHER- 3/8"	95479-A	1	76	WASHER- Thrust (Inner)		
34	NUT- 3/8 - 24	81255	1		(Prior to Lot #C-320)	58833-1	1
35	SCREW- Hex sems 10-24 x 3/4	88051	5				
36	ROLLERS- Needle (Set of 25)	A-12913	1				
37	PUMP- Automatic Oil (Note 1)	A-12201-A	1				
	Includes:						
38	PLUNGER- Oil pump	A-12202	1				
39	SCREW- Hex sems 8-32 x 3/8	88041	1				
40	LEVER- Oil Adjustment	12141	1				
41	"O" RING	12095	3				
42	"O" RING	12155	1				
43	PIN & PLUG (Note 1)	A-12144	1				
44	WASHER- Thrust	63860	2				
45	RACE- Inner	65985-B	1				
46	BEARING- Needle	64124	1				
47	NUT- Centerlock #10-24	81208	4				
48	TUBING- Rubber (Oil) 4 3/4"	93112-19	1				

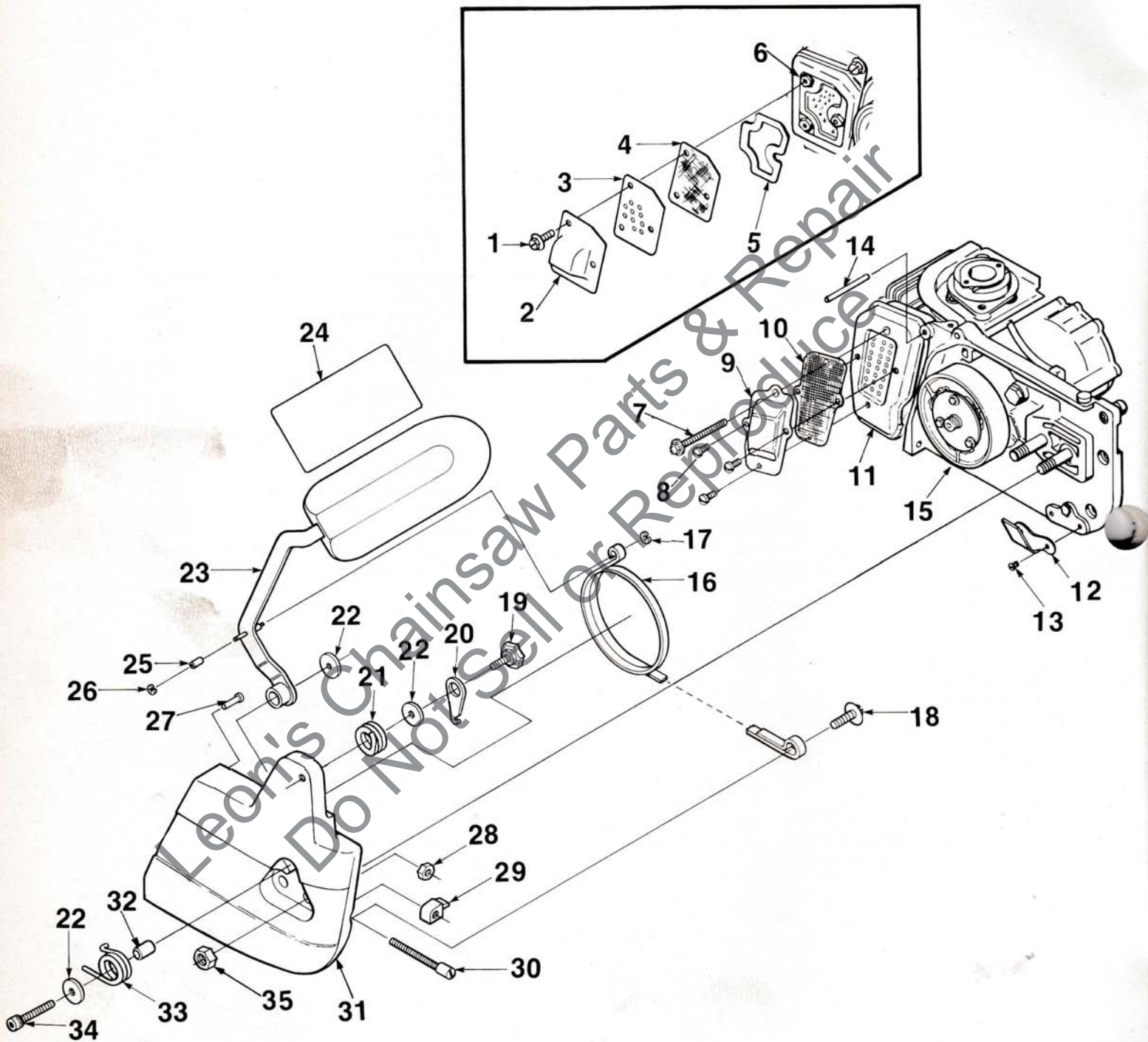
*See note, Page 9, Figure 4.

NOTE 1: Factory - built units up to lot #8249 used crankcase A-12251-C plus the adjustable type oil pump and related parts called out in the inset drawing. For all saws after Lot No. 8248, or whenever a replacement crankcase is required and only the dash -D (assembly A-12251-D, casting 12061-C) is available, install only those parts called out in the main drawing (particularly index numbers 10, 49, and 58 thru 62.)

NOTE 2: Can be used only with 3- shoe clutch.

360 Automatic Saws

FIGURE 4



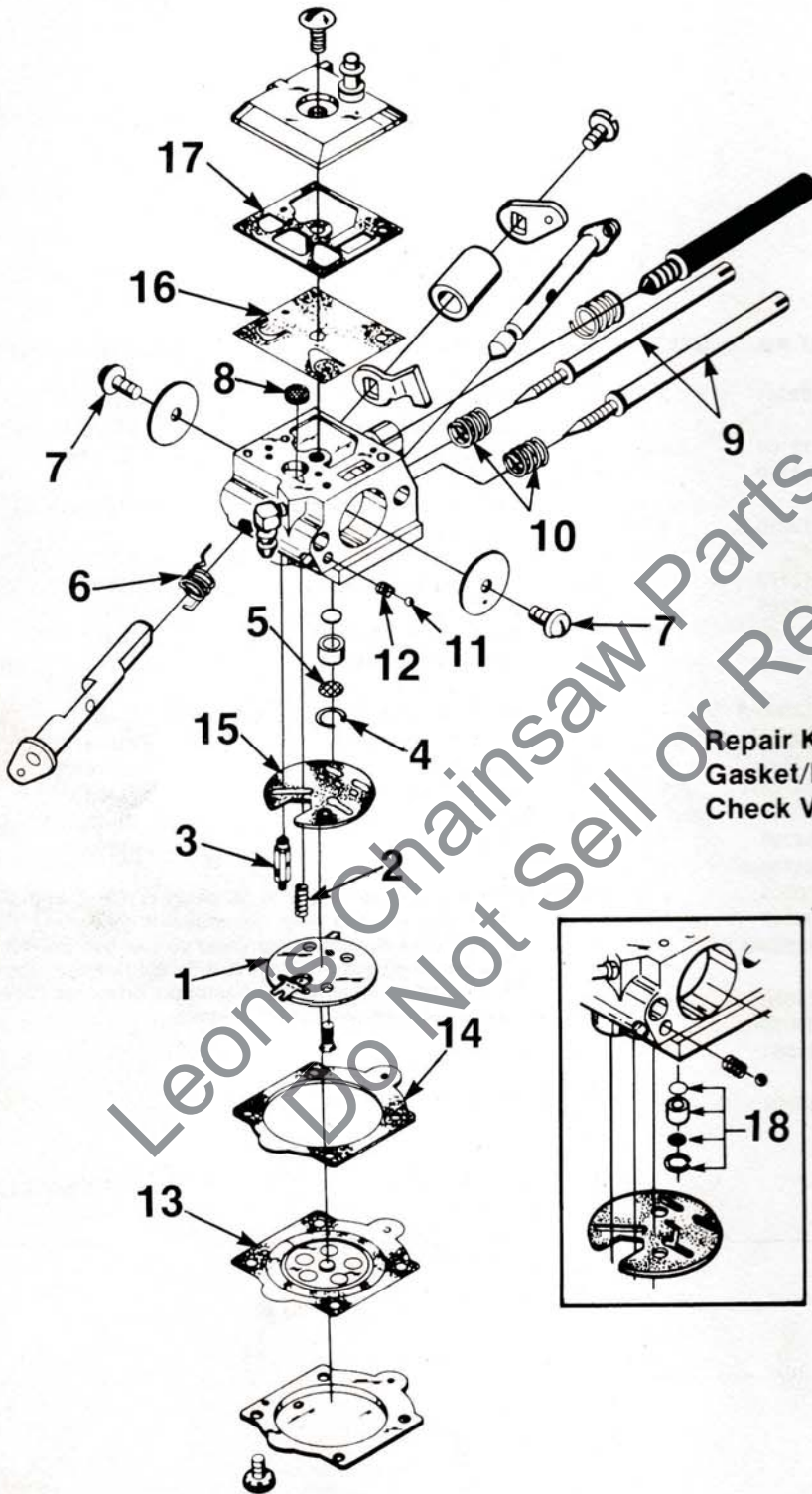
360 Automatic Saws

FIGURE 4

NO.	DESCRIPTION	PART NO.	QTY.	NO.	DESCRIPTION	PART NO.	QTY.
1	SCREW- Hex sems, 8-32 x 3/8 (prior to lot #C-320)	88041	3	18	SCREW- Pan hd. 1/4-20 x 5/8	82258	1
2	PLATE- Muffler exhaust (prior to lot #C-320)	12195-1	1	19	SCREW- Shoulder	93773	1
3	BAFFLE (prior to lot #C-320)	12119	1	20	LEVER- Locking	93602-A	1
4	ARRESTOR- Spark (accessory) (prior to lot #C-320)	D-12270-A	1	21	SPRING- Locking lever	93600-A	1
5	GASKET- Exhaust plate (prior to lot #C-320)	12173	1	22	WASHER	93282	3
6	MUFFLER (prior to lot #C-320) Includes: GASKET- Muffler (shown on Fig. 2) (prior to lot #C-320)	A-12265	1	23	LEVER- Brake w/guard Includes:	A-97221	1
7	SCREW (After lot #C-320)	12080-A	1	24	DECAL	96990	1
8	SCREW (After lot #C-320)	93460	1	25	BEARING- Roller	93625	1
9	PLATE- Exhaust (After lot #C-320)	82370	3	26	"E" RING	70925	1
10	SCREEN- Spark arrestor (Opt.) (After lot #C-320)	94795-1	1	27	SLEEVE- Headed	70313	1
11	MUFFLER (After lot #C-320)	94797	1	28	NUT- Centerlock	81206	1
12	STOP- Chain	94785-1	1	29	PIN- Guide bar adjusting	65112-1	1
13	SCREW- Hex hd. sems 8-32 x 1/2 KIT- Chain brake Includes:	88042	1	30	SCREW- Guide bar adjusting	93962	1
14	PIN- Dowel (.125 x 1 3/8) (Note 1)	A-93693-A	1	31	COVER- Drivecase	93648-1	1
15	DRUM & HUB	64870	1	32	SLEEVE- Lever	93296	1
16	BRAKEBAND Includes:	A-93630-2	1	33	SPRING- Brake lever	93603	1
17	"E" RING	A-94561	1	34	SCREW- Soc cap hd.	80428-1	1
		69599	1	35	NUT- Hex 5/16-18	81196	2

NOTE 1: Pin #14 supplied loose in SL chain brake kit and 360 service crankcase assy, not available separately. For chain brake mounting only, press pin into hole provided in crankcase boss until there is .375 (.095 MM) remaining for engagement of pin in chainbrake drivecase cover, pin is required only for chainbrake.

FIGURE 5



CARBURETOR
HDC-39A
A-97801

- | | |
|------------------------------------|---------|
| Repair Kit (Incl. 1-17) | 93205-A |
| Gasket/Diaphragm Kit (Incl. 13-17) | 93754 |
| Check Valve Repair Kit (Incl. 18) | 93910-A |

ACCESSORIES

ADHESIVE- Zip grip	70627
ARRESTOR- Spark	A-93898-A
BUMPER- Spiked	DA-12272-D
EXCHANGER- Heat	A-94284-B
KIT- Chain brake	A-93693-A
KIT- Hand guard	A-93967-A
SAFE•T•TIP (STD)	A-70790-A
KIT- Guide bar insert	A-96612
KIT- Sprocket repair	A-69496-B
RUBBER- Tubing 10'	93112-99
ROPE- Starter #4 250Ft. reel	68848
SET- Isolator-hard (set of four)	A-70622

PAINT

SPRAY CAN- Black	22772
SPRAY CAN- Red	23475

TOOLS

ANVIL- Bearing removal (Crankcase)	23846-1
ANVIL- Bearing removal (Crankcase & Backplate)	23846-2
KEY- Hex 5/32 (Cyl. & Handlebar)	22126
KEY- Hex 9/64 (HG-SL)	23528
PLUG- Bearing & seal installation & removal	24827-A
PLUG- Seal installation	24826-A
PULLER- Rotor	A-24290
Includes:	
SCREW- Rotor removal	24301
RING- Retaining	67912
SHIM- Yellow plastic (.020) (air gap)	24853
SLEEVE- Seal assembly (Crankcase & Backplate)	23759
SLEEVE- Seal removal (Crankcase)	23136-6
TOOL & PLUNGER- Piston pin	A-24871
WRENCH- Socket	68651
WRENCH- Spanner ("S" Clutch)	A-93791
Includes:	
PIN	23717-A
SCREW DRIVER	24541
PLUG- Alignment (See Note)	24868
TOOL- (3 shoe-clutch)	A-17146
GREASE- Multi use	17193
SEAL- Installation spacer	93694

NOTE: Alignment plug requires for A-12201-A oil pump only.

HOMELITE DIVISION OF TEXTRON INC.

14401 Carowinds Boulevard
P.O. Box 7047
Charlotte, North Carolina 28217

1485RY

Leon's Chainsaw Parts & Repair
Do Not Sell or Reproduce



HOMELITE **TEXTRON**

Homelite Division of Textron Inc.