

HOMELITE®

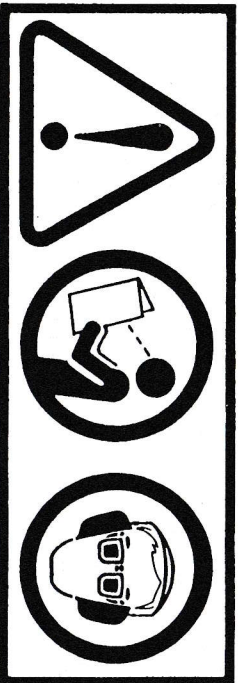
PARTS LIST

355SL

AUTOMATIC CHAIN SAW

UT-10670

DO NOT USE THIS PARTS LIST FOR THE MODEL 360 CHAIN SAW.



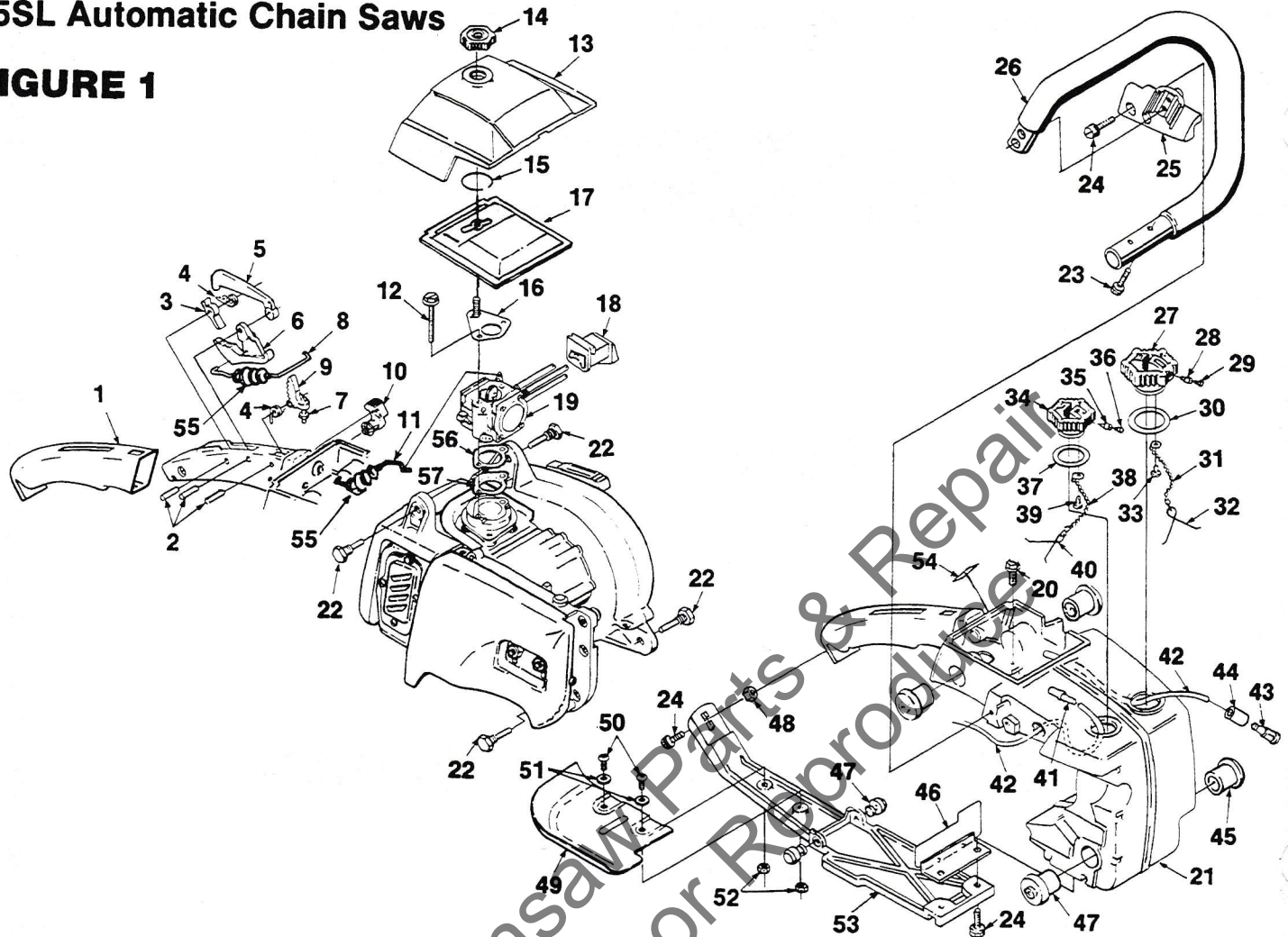
PART NO. 18728

Printed in U.S.A.

Price \$1.00

35SL Automatic Chain Saws

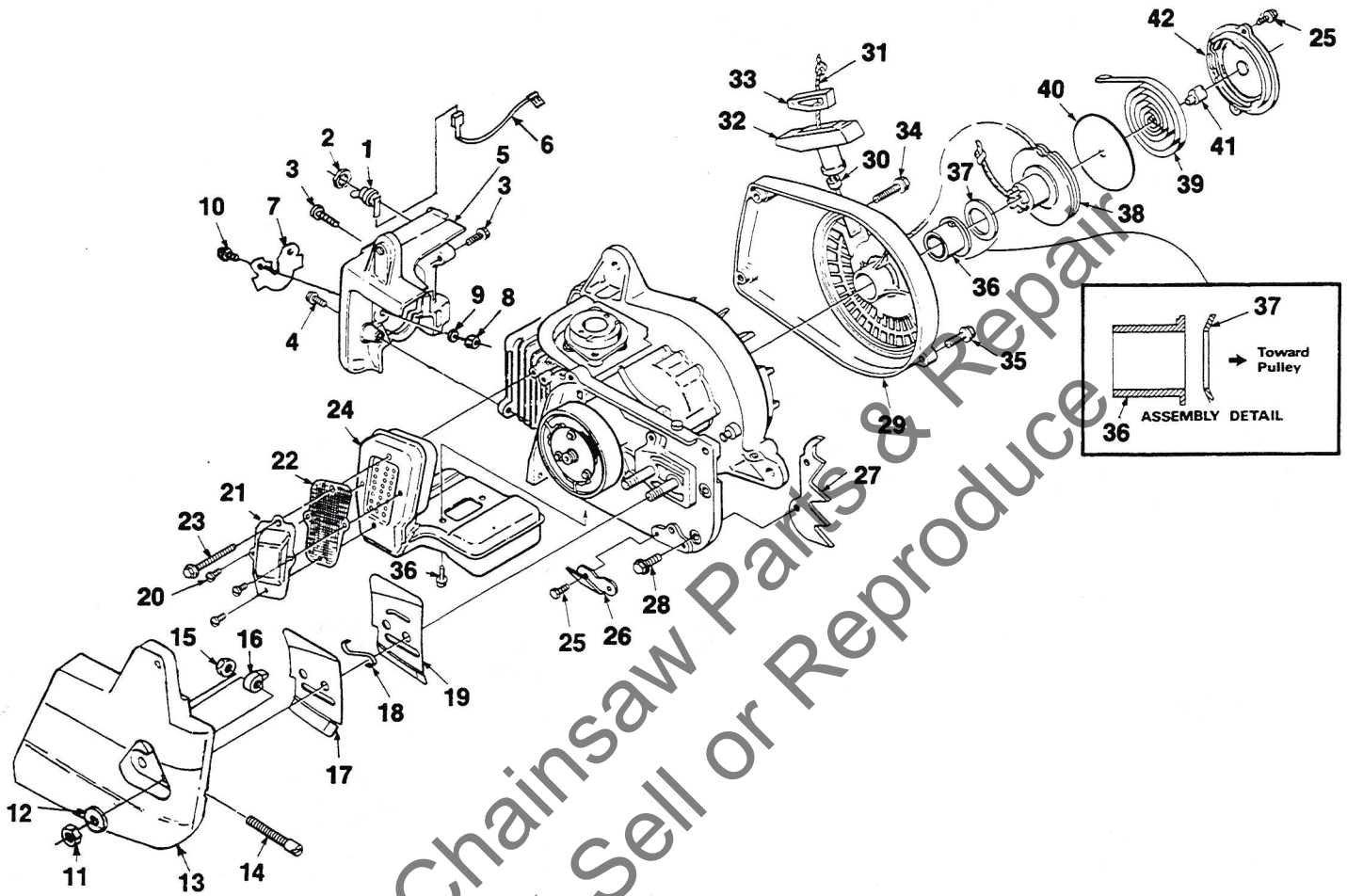
FIGURE 1



NO.	PART NO.	DESCRIPTION	QTY.	NO.	PART NO.	DESCRIPTION	QTY.
1	12049	GRIP- Throttle handle	1	31	69502	CHAIN- Bead	1
2	70253	PIN- Dowel	3	32	96535	RETAINER	1
3	12092	LEVER- Trigger lock	1	33	82256-A	SCREW- Pan hd. plastite (6 x 1/4")	1
4	12051	SPRING- Torsion	2	34	A-12222	CAP- Oil filler	1
5	12093	LOCK- Trigger	1			Includes:	
6	A-12966	KIT- Trigger & Screw	1	35	69451	VALVE- Check (oval duckbill)	1
		Includes:		36	69454	FILTER- Filler cap	1
7	12094-1A	SCREW- Trigger latch	1	37	12126	GASKET- Oil cap	1
8	12078-1A	ROD- Throttle	1	38	69502	CHAIN- Bead	1
9	12091-1A	LATCH- Trigger	1	39	82256-A	SCREW- Pan hd. plastite (6 x 1/4")	1
10	94765	KNOB- Choke	1	40	96535	RETAINER- Cap	1
11	94977	ROD- Choke	1	41	A-59009-A	FINDER- Oil	1
12	93460	SCREW- Hex sems (10-24 x 1 3/4")	2	42	93112-42	TUBING- Rubber (10 1/2")	2
13	70425-6	AIR FILTER COVER	1	43	A-69923	FUEL PICK-UP	1
14	A-67639-2	NUT- Filter cover mounting	1			Includes:	
15	58319-A	RING- Retaining	1	44	64083	FILTER- Felt	1
16	A-93240	BRACKET- Mounting cover	1	45	A-70623	SET- Isolator (soft) (set of four)	1
17	78209	FILTER- Air	1		A-70622	SET- Isolator (hard) (set of four)	1
18	12054	GROMMET- HI-LO	1			(Alternate)	
19	A-97801	CARBURETOR- (HDC-39-A)	1	46	A-12153	DEFLECTOR- Air (exhaust)	1
20	88050	SCREW- Hex sems (10-24 x 5/16")	2	47	12096	BUMPER	2
21	A-79357-A	HOUSING- Engine	1	48	70810	NUT- Hex (10-24)	1
	A-70624-A	SET- Isolator pin	1	49	A-12267-B	KIT- Right hand guard (optional)	1
		Includes:				Includes:	
22	12100-B	PIN- Isolator	4	50	82275	SCREW- Hex hd. cap	2
23	82262	SCREW- Soc. hd. (10-24 x 7/8")	4	51	84003	WASHER	2
24	88051	SCREW- Hex sems (10-24 x 3/4")	3	52	81208	NUT- Center lock (#10-24)	2
25	12059-2A	BRACKET- Handle bar	1	53	12042-2	BRACE- Handle	1
26	A-12107-A	HANDLEBAR	1	54	79304	DECAL- Choke	
27	A-69500-A	CAP- Fuel filler	1	55	58348	GROMMET	
		Includes:		56	A-70923-A	BUSHING	1
28	69451	VALVE- Check (oval duckbill)	1			Includes	
29	69454	FILTER- Filler cap	1	57	70743-A	GASKET	1
30	69501	GASKET- Fuel cap	1				

35SL Automatic Chain Saws

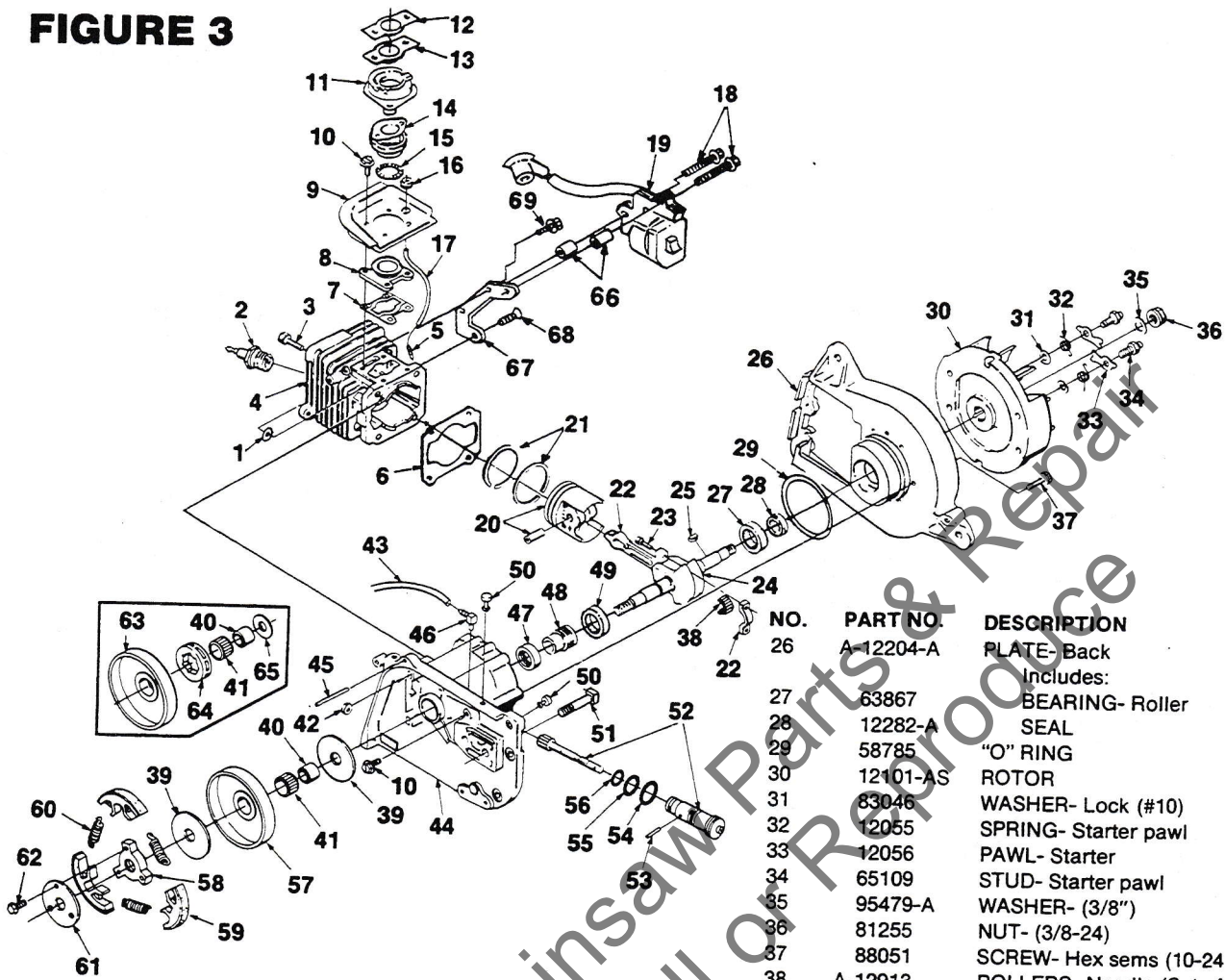
FIGURE 2



NO.	PART NO.	DESCRIPTION	QTY.	NO.	PART NO.	DESCRIPTION	QTY.
1	A-57650-3B	SWITCH- Grounding Includes:	1	22	94797	SPARK ARRESTOR SCREEN	1
2	72084-1A	NUT	1	23	93460	SCREW	1
3	88051	SCREW- Hex sems (10-24 x 3/4")	4	24	A-94785-1	MUFFLER	1
4	88054	SCREW- (10-24 x 1 1/4")	3	25	88042	SCREW	2
5	94779-2	SHIELD- Cylinder	1	26	70705	STOP- Chain	1
6	A-94850	LEAD- Ground	1	27	A-12272-D	BUMPER- Spiked (accessory) Includes:	1
7	79295-1	SHIELD- Insert	1	28	88048	SCREW- Hex hd. (10-24 x 3/8")	2
8	81223	NUT- Centerlock (8-32)	2	29	A-12114-A	HOUSING- Rewind starter Includes:	1
9	84025	WASHER- Flat (#8)	2	30	65185	BUSHING- Rope	1
10	88041	SCREW- Hex sems (8-32 x 3/8")	2	31	94564-A	ROPE- Starter (38" #4)	1
11	81196	NUT- Hex (5/16-18)	2	32	A-69962-B	GRIP- Starter rope Includes:	1
12	84032	WASHER- Flat (5/16")	2	33	70018-A	INSERT- Rope retaining	1
13	A-93930-2	COVER- Drivecase Includes:	1	34	88055	SCREW- Hex sems (10-24 x 1 3/8")	1
14	93962	SCREW- Guide bar adjusting	1	35	82218	SCREW- w/ Washer (10-24 x 1 1/8")	2
15	81206	NUT- Centerlock (10-32)	1	36	12053	BUSHING- Starter	1
16	65112-1	PIN- Guide bar adjusting	1	37	70842	WASHER- Spring	1
	A-70688	KIT- Guide bar plate Includes:	1	38	A-12214-A	PULLEY & CUP	1
17	70398	PLATE- Guide bar (Outer)	1	39	65107	Spring- Rewind	1
18	69966	SPRING- Guide bar	1	40	12052	SPRING- Shield	1
19	70397	PLATE- Guide bar (Inner)	1	41	65102	LOCK- Spring	1
20	82370	SCREW	3	42	A-02566	STARTER COVER & DECAL KIT	1
21	94795-1	PLATE- Exhaust	1				

35SL Automatic Chain Saws

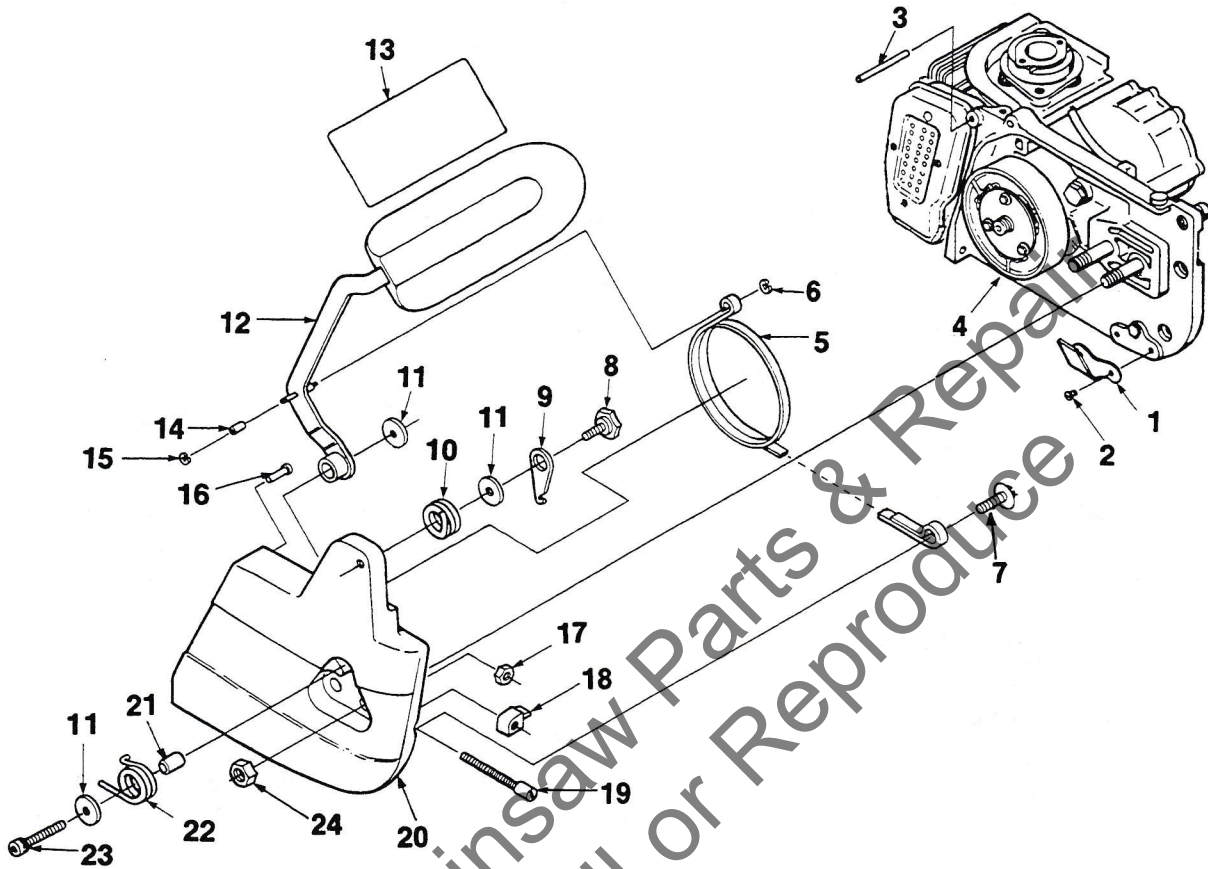
FIGURE 3



NO.	PART NO.	DESCRIPTION	QTY.	NO.	PART NO.	DESCRIPTION	QTY.
1	12021	WASHER	4	26	A-12204-A	PLATE- Back Includes:	1
2	63547-S	SPARK PLUG (Champ. CJ6)	1	27	63867	BEARING- Roller	1
3	78270	SPARK PLUG (RCJ-6) (Int'l Only)	1	28	12282-A	SEAL	1
4	82262	SCREW- Soc. hd. cap (#10-24 x 7/8")	4	29	58785	"O" RING	1
5	A-02677	CYLINDER	1	30	12101-AS	ROTOR	1
6	69833	FITTING	1	31	83046	WASHER- Lock (#10)	2
7	78284	GASKET- Cylinder	1	32	12055	SPRING- Starter pawl	2
8	70714	GASKET- Intake adaptor	1	33	12056	PAWL- Starter	1
9	70715	MANIFOLD- Intake	1	34	65109	STUD- Starter pawl	1
10	12161-1B	DEFLECTOR- Air (Intake)	1	35	95479-A	WASHER- (3/8")	1
11	88042	SCREW- w/Washer (8-32 x 1/2")	5	36	81255	NUT- (3/8-24)	5
12	A-70246-B	FLANGE- Carburetor connector	1	37	88051	SCREW- Hex sems (10-24 x 3/4")	1
13	A-70923-A	BUSHING & GASKET ASSY. Includes:	1	38	A-12913	ROLLERS- Needle (Set of 25)	1
14	70743-A	GASKET	1	39	63860	WASHER- Thrust	2
15	12048-C	CONNECTOR- Carburetor	1	40	65985-B	RACE- Inner	1
16	12291	SPRING- Garter	1	41	64124	BEARING- Needle	1
17	62740	GROMMET	1	42	81208	NUT- Centerlock (#10-24)	4
18	93112-22	LINE- Pulse (5 1/2")	1	43	93112-42	TUBING- Rubber (Oil) 10 1/2"	1
19	88054	SCREW- Hex sems (10-24 x 1.125")	2	44	A-79311-AT	CRANKCASE Includes:	1
20	A-94361-A	MODULE & CORE	1	45	96865	PIN- Dowel	1
21	A-12257-A	PISTON & PIN Includes:	1	46	94327	FITTING- Oil line	1
22	12040	PISTON RING	2	47	70729	SEAL- (Double lip)	1
23	A-12068-1	ROD- Connecting Includes:	1	48	12071	WORM GEAR	1
24	69919	SCREW- Soc. hd. (8-32 x 9/16")	2	49	63867	BEARING- Roller	1
25	12037-1	CRANKSHAFT	1	50	12096	BUMPER	3
26	75078	KEY- Woodruff	1	51	58753	BOLT- Guide bar (5/16")	2
				52	A-70962	PUMP- Automatic oil Includes:	1
				53	70920	PIN- Pump	1
				54	70921	"O" RING	1
				55	12853	"O" RING	1
				56	12095	"O" RING	1
				57	A-95460-2	SPROCKET & DRUM (7T, 3/8P)	1
				58	96448	SPIDER- Clutch	1
				59	A-96447-A	SHOE- Clutch	3
				60	96451	SPRING- Extension	3
				61	96449	COVER- Clutch	1
				62	88041	SCREW- Hex sems (8-32 x 3/8")	1
				63	A-93630-2	DRUM & HUB	1
				64	95058-A	SPROCKET & RIM (7T, 3/8P)	1
				65	58833-1	WASHER- Thrust	1
				66	79331	SPACER- Module	1
				67	79332-1	PLATE- Module mounting	1
				68	97605	SCREW- Flat hd. torx	1
				69	80983	SCREW- Hex (8-32 x 1/2")	1

35SL Automatic Chain Saws

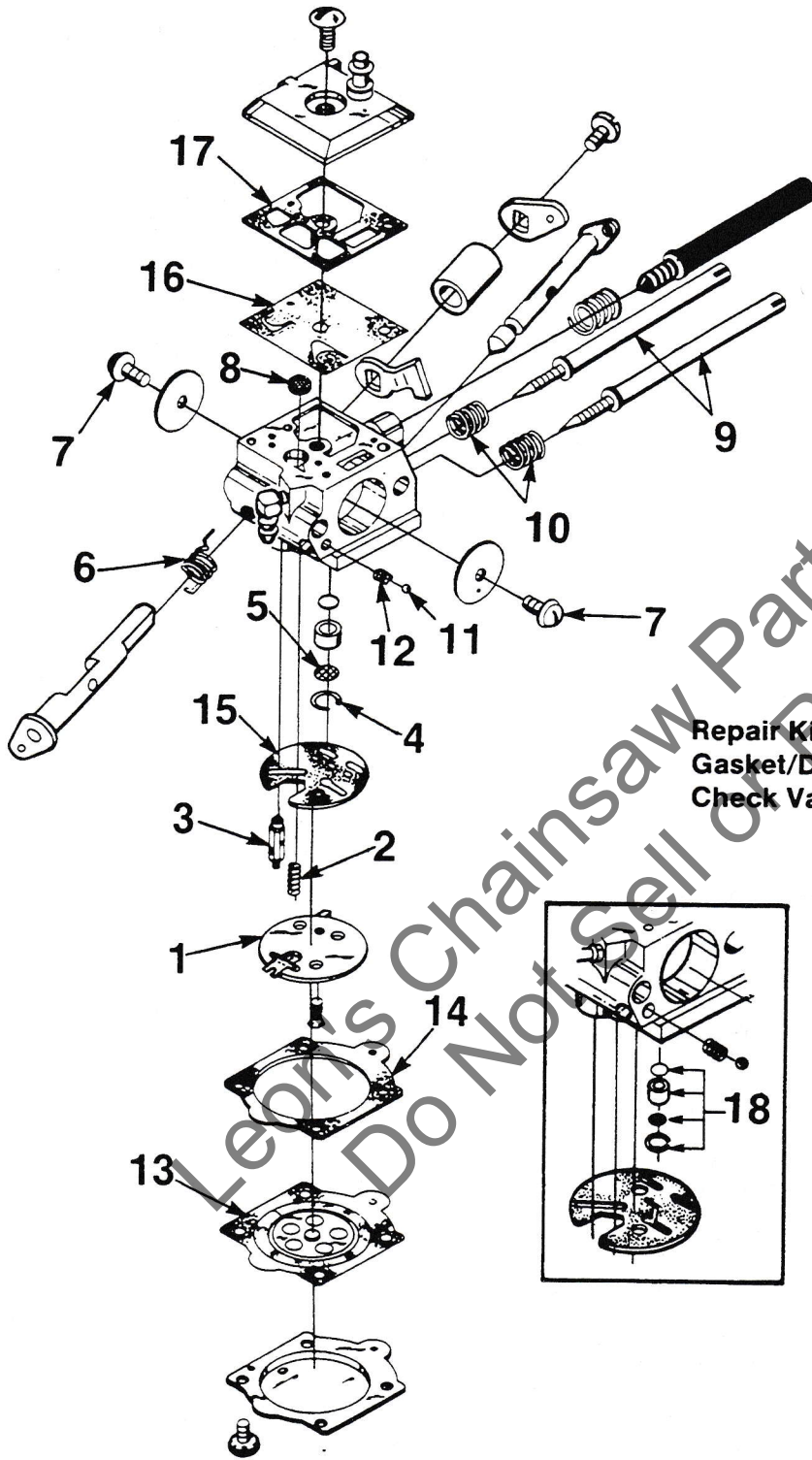
FIGURE 4



NO.	PART NO.	DESCRIPTION	QTY.
1	70705	STOP- Chain	1
2	88042	SCREW- Hex hd. sems (8-32 x 1/2")	1
	A-93693-A	KIT- Chain brake	1
		Includes:	
3	96865	PIN- Dowel	1
4	A-93630-2	DRUM & HUB	1
5	A-94561	BRAKEBAND	1
		Includes:	
6	69599	"E" RING	1
7	82258	SCREW- Pan hd. (1/4-20 x 5/8")	1
8	93773	SCREW- Shoulder	1
9	93602-A	LEVER- Locking	1
10	93600-B	SPRING- Locking lever	1
11	93282	WASHER	3
12	A-97221-A	LEVER- Brake w/guard	1
		Includes:	
13	02661	DECAL	1
14	93625	BEARING- Roller	1
15	70925	"E" RING	1
16	95839	BUSHING	1
17	81206	NUT- Centerlock	1
18	65112-1	PIN- Guide bar adjusting	1
19	93962	SCREW- Guide bar adjusting	1
20	A-04241	COVER- Drivecase	1
21	93296	SLEEVE- Lever	1
22	93603	SPRING- Brake lever	1
23	80428-1	SCREW- Soc cap hd.	1
24	81196	NUT- Hex 5/16-18	2

35SL Automatic Chain Saws

FIGURE 5



CARBURETOR
HDC-39A
A-97801

- Repair Kit (Incl. 1-17) 93205-A
- Gasket/Diaphragm Kit (Incl. 13-17) 98631
- Check Valve Repair Kit (Incl. 18) 93910-B

35SL Automatic Chain Saws

TOOLS

ANVIL- Bearing removal (Crankcase)	23846-1
KEY- Hex 5/32 (Cyl. & Handle bar)	22126
KEY- Hex 9/64	23528
PULLER- Rotor	A-24290
Includes:	
SCREW- Rotor removal	24301
RING- Retaining	67912
SHIM- Pink plastic (.015") (air gap)	22486
SLEEVE- Seal assembly (Crankcase & Backplate)	23759
SLEEVE- Seal removal (Crankcase)	23136-6A
COMBINATION WRENCH	A-24824
TOOL- (3 shoe-clutch)	A-17146
GREASE- Multi use	18453

ACCESSORIES

ADHESIVE- Zip grip	70627
BUMPER- Spiked	DA-12272-E
KIT- Sprocket repair	A-69496-B
RUBBER- Tubing 10'	93112-99
ROPE- Starter #4 250Ft. reel	68848
SPRAY CAN- Red	23475

BAR & CHAIN COMBINATIONS

BAR LENGTH & TYPE	BAR NUMBER	CHAIN DESCRIPTION	CHAIN NO. (BLISTER PACK)	CHAIN NO. (BOXED)
16" PT	PT-16381-G5	38-ME50-59	D-92440	J1-92059-LB
GW	GW-16001-G5	38-ME50-59		
SP	SP-16381-H5	38-ME50-59		
20" PT	PT-20381-G5	38-ME50-70	D-92441	J1-92070-LB
GW	GW-20001-G5	38-ME50-70		
SP	SP-20381-H5	38-ME50-70		
24" PT	PT-24381-G5	38-ME50-81	D-92442	J1-92081-LB
GW	GW-24001-G5	38-ME50-81		
SP	SP-24381-H5	38-ME50-81		

SYMBOL DEFINITIONS



Read all Safety, Operating and Maintenance instructions.



Indicates Danger and Warning.



Wear eye and hearing protection when operating this equipment.

CUSTOMER ASSISTANCE

FOR THE LOCATION OF YOUR NEAREST HOMELITE SERVICING DEALER IN THE UNITED STATES, PUERTO RICO, AND THE VIRGIN ISLANDS.

CALL: 1-800-242-4672

NOTE: DEALER INFORMATION, TECHNICAL ADVICE AND PRODUCT INFORMATION CAN BE OBTAINED AT THIS NUMBER.

HEADQUARTERS

HOMELITE DIVISION OF TEXTRON INC.
P.O. BOX 7047
CHARLOTTE, N.C. 28241

OVERSEAS OFFICES

NETHERLANDS

HOMELITE TEXTRON
DIVISION OF TEXTRON ATLANTIC
(HDQS. — Europe, Africa and Middle East)
Haverstraat 24
2153 GB Nieuw Vennep
The Netherlands

FRANCE

HOMELITE TEXTRON
UNE DIVISION DE TEXTRON
S.A.R.L.
Z.I. du Vert-Galant
Rue du Chateau/Rue de la Garenne
95310 Saint-Quen-L'Aumone
France

AUSTRALIA

HOMELITE DIVISION OF TEXTRON PACIFIC LIMITED
HEADQUARTERS
22 Terra - Cotta Drive
Blackburn, 3130
Victoria, Australia

CANADIAN OFFICES

HOMELITE
DIVISION OF TEXTRON CANADA LIMITED
1850 55th Avenue
Lachine, Quebec, Canada
H8T 3J5

212-214 590 Ebury Place
New Westminster, B.C.
V3M 6K7

595 Canarctic Drive
Toronto, Ontario
M3J 2P9

HOMELITE **TEXTRON**

Homelite Division of Textron Inc.