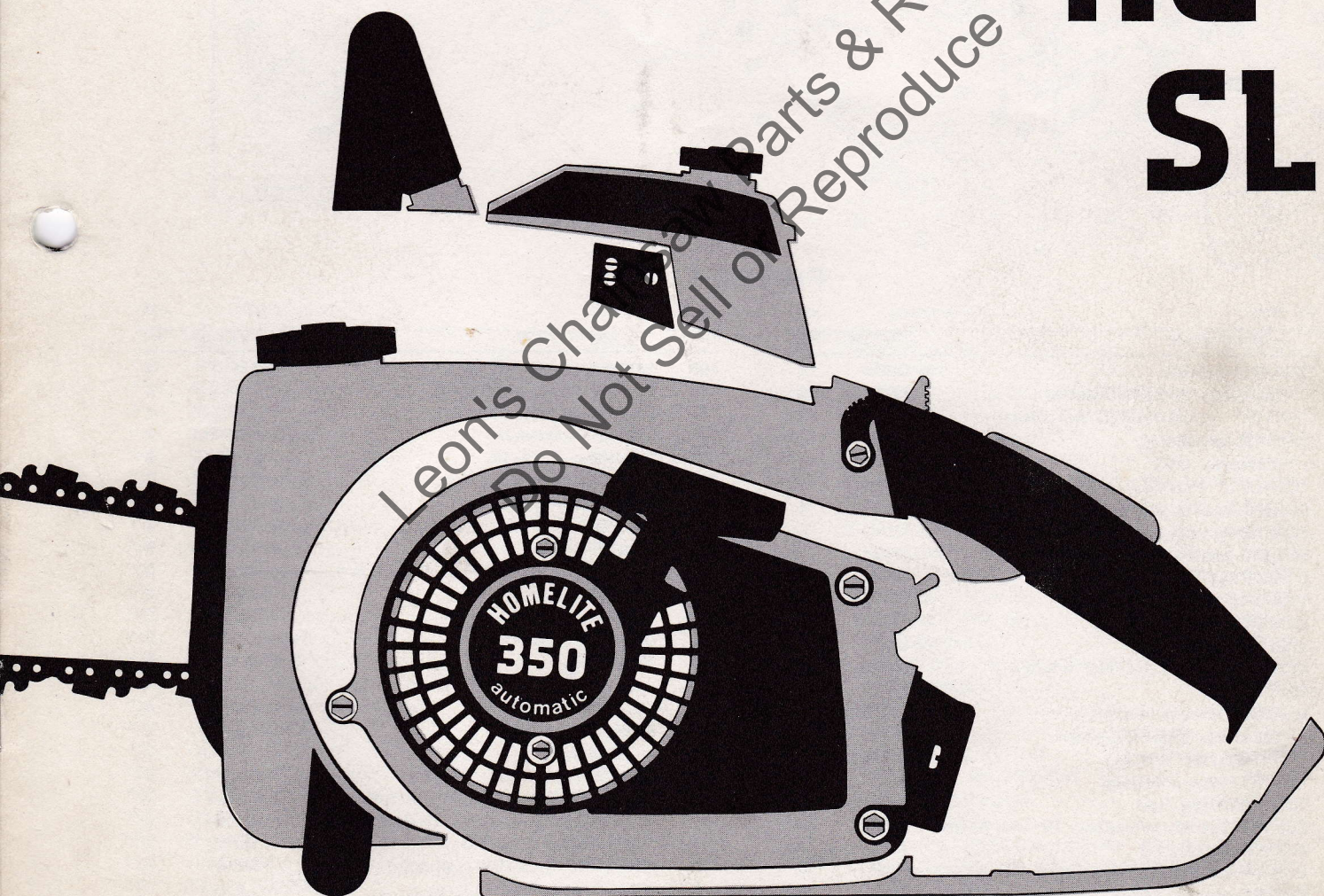


parts list

350 automatic chain saws HG SL



printed in U.S.A.



A textron DIVISION, PORT CHESTER, N.Y. 10573

price .35
part no. 24820

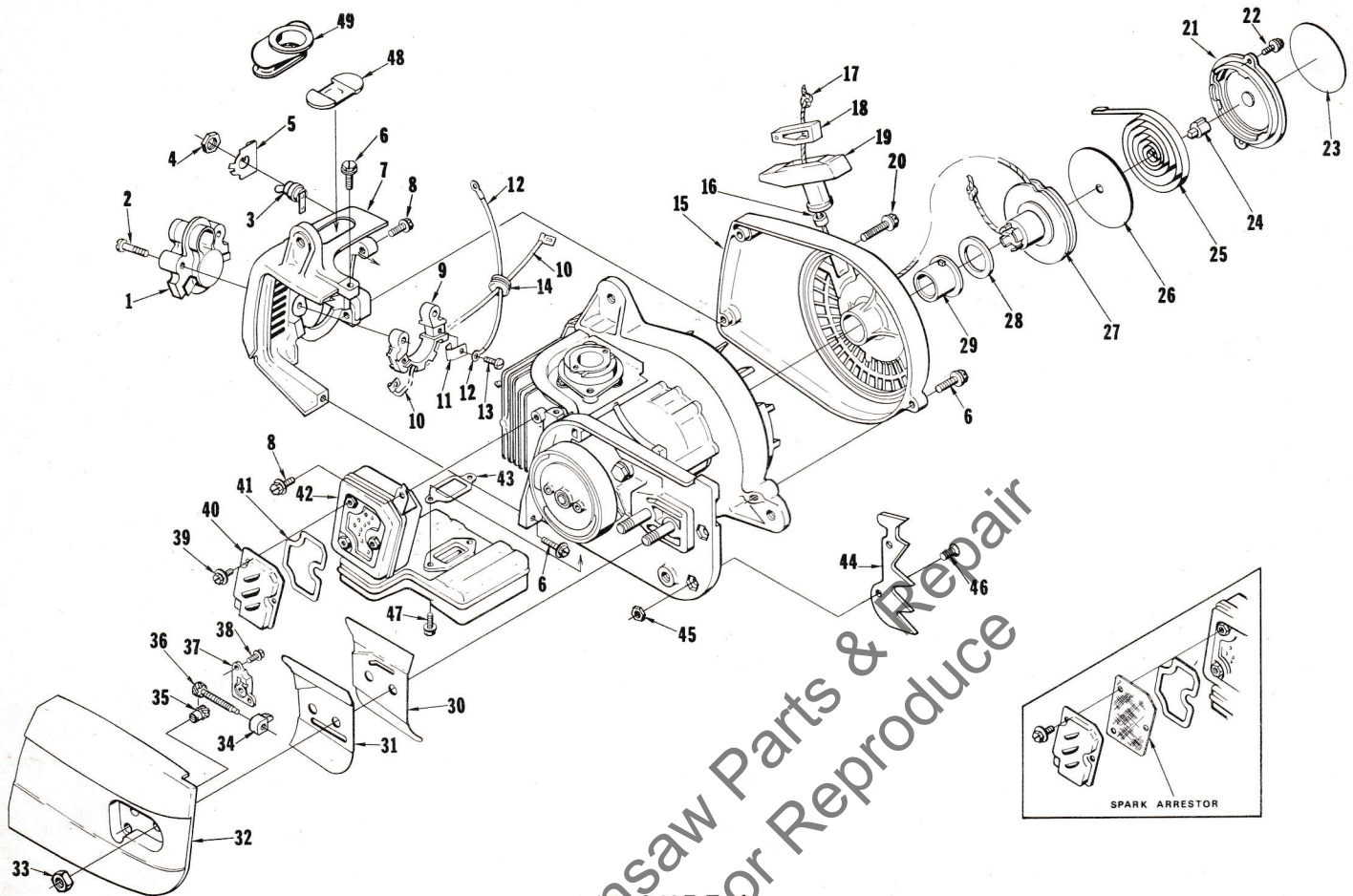


FIGURE 1

No.	Description	Part No.	Qty.	No.	Description	Part No.	Qty.
* 1	TRANSFORMER	A-12299	1	*29	BUSHING-starter cup	12053	1
* 2	Includes: SCREW-Plastite	12791-A	2	*30	PLATE-guide bar (inner)	12162	1
*	GROMMET-not shown	12191	1	*31	PLATE-guide bar (outer)	12163	1
3	SWITCH-grounding	A-57650-3	1	*32	COVER-drivecase	A-12295-1	1
4	Includes: NUT	72084-A1	1	33	NUT-hex, 5/16-18	81196	2
* 5	"ON-OFF" PLATE	12793	1	*34	PIN-guide bar adjusting	12133-1	1
* 6	SCREW-hex hd. w/washer, 10-24 x 3/4	88022	4	*35	ADJUSTER-guide bar	A-12137	1
* 7	SHIELD-cylinder	12074-2	1	*36	SCREW-guide bar adjusting	A-12132	1
* 8	SCREW-hex hd. w/washer, 10-24 x 1/2	88024	2	*37	COVER-gear	12134	1
* 9	RECEPTACLE-transformer	12629	1	*38	SCREW-pan washer hd., 6-32 x 3/8	82251	2
*10	LEAD-low tension	A-12234	1	*39	SCREW-8-32 x 3/8	88026	3
*11	CONTACT-transformer	12788	2	*40	PLATE-exhaust	12176-1	1
*12	LEAD-ground	A-12718	1	*41	GASKET-exhaust plate	12173	1
13	SCREW-Plastite pan hd., 6 x 3/8	82215	2	*42	MUFFLER	A-12265	1
14	GROMMET	68279	1		Includes:		
*15	HOUSING-rewind starter	A-12114-1	1	*43	GASKET-muffler	12080	1
16	Includes: BUSHING-rope	65185	1	*44	BUMPER-spiked	A-12272	1
17	ROPE-starter (46" #4)	65118	1		Includes:		
18	INSERT-rope retaining	68837	1	45	NUT-centerlock, 10-32	81206	2
19	GRIP-starting rope	64155-A	1	46	SCREW-flat hd., 10-32 x 7/16	80668	2
*20	SCREW-hex hd. w/washer, 10-24 x 1-1/4	88023	1	*47	SCREW-hex w/washer, 10-24 x 5/16	88020	2
*21	COVER-starter	12523	1	*48	PLUG-cylinder shield	12283	1
*22	SCREW-hex hd., w/washer, 8-32 x 1/2	88027	2	*49	HEAT EXCHANGER (see note)	12253	1
*23	DECAL-starter cover	12192	1		* ARRESTOR-spark (accessory)	12270	
24	LOCK-spring	65102	1				
25	SPRING-rewind	65107	1				
*26	SHIELD-spring	12052	1				
*27	PULLEY & CUP	A-12214	1				
*28	SHIELD-pulley	12089	1				

Note: When using Heat Exchanger, index #49, the cylinder Shield Plug, index #48, and the air Inlet Screen, index #51 shown on Fig. 2, must be removed.

*Denotes new parts

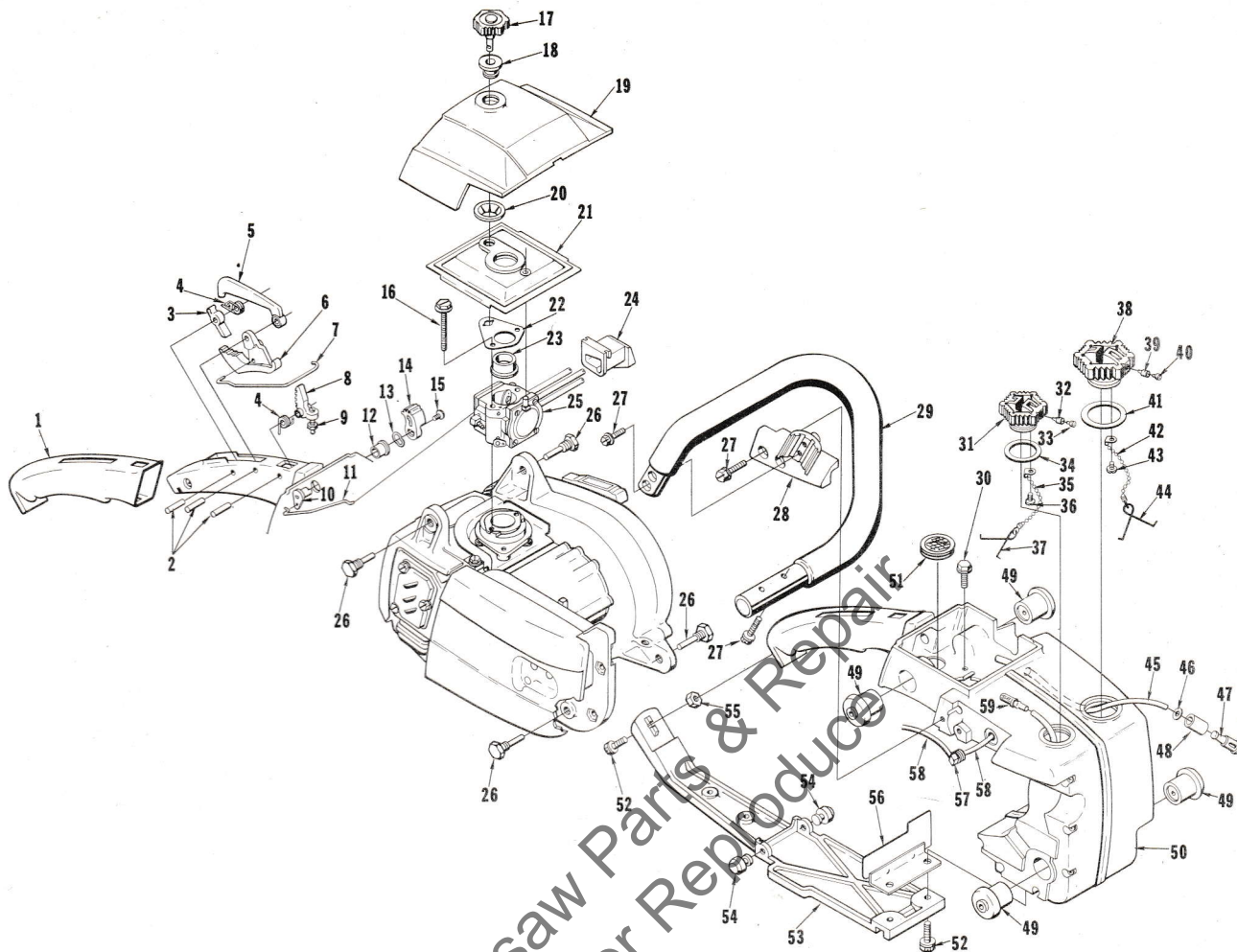


FIGURE 2

No.	Description	Part No.	Qty.	No.	Description	Part No.	Qty.
* 1	GRIP-throttle handle	12049	1	*31	CAP-oil filler	A-12222	1
* 2	PIN-dowel	71458	3		Includes:		
* 3	LEVER-trigger lock	12092	1	*32	VALVE-check (oval duckbill)	69451	1
* 4	SPRING-torsion	12061	2	*33	FILTER-filler cap	69454	1
* 5	LOCK-trigger	12093	1	*34	GASKET-oil cap	12126	1
* 6	TRIGGER	12090	1	*35	CHAIN-bead	69502	1
* 7	ROD-throttle	12078-1	1	*36	SCREW-pan hd. Plastite, 6 x 1/4	82256	1
* 8	LATCH-trigger	12091-1	1	37	RETAINER	69503	1
* 9	SCREW-trigger latch	12094-1	1	38	CAP-fuel filler	A-69500	1
*10	SHAFT-choke	A-12227	1		Includes:		
*11	ROD-choke	12149-1	1	*39	VALVE-check (oval duckbill)	69451	1
*12	BUSHING	12147	1	*40	FILTER-filler cap	69454	1
*13	WASHER-wave	12150	1	41	GASKET-fuel cap	69501	1
*14	KNOB-choke	12145	1	*42	CHAIN-bead	69502	1
*15	SCREW-8-32 x 3/8	88026	1	*43	SCREW-pan hd. Plastite, 6 x 1/4	82256	1
*16	SCREW-hex hd. w/washer, 10-24 x 1-3/4	88025	2	44	RETAINER	69503	1
*17	NUT-filter cover mounting	A-12112	1	45	LINE-fuel	A-68053	1
*18	BUSHING-nylon	12110	1	46	WASHER	64182	1
*19	COVER-air filter	12033-3	1	47	PICK-UP-fuel	A-63920	1
*20	NUT-push-on spring	12140	1	48	Includes: FILTER-felt	64083-1	1
*21	FILTER ELEMENT-air	A-12225	1	*49	ISOLATOR-vibration	12285	4
*22	PLATE-spring	12117-1	1	*50	HOUSING-engine	A-12286	1
*23	BUSHING-flange	12109-1	1	*51	Includes: SCREEN-air inlet (Note)	12269	1
*24	GROMMET-"HI-LOW"	12054	1	*52	SCREW-hex hd. w/washer, 10-24 x 3/4	88022	3
*25	CARBURETOR	A-12160	1	*53	BRACE-handle	12042-2	1
*26	PIN-isolator	12100	4	*54	BUMPER	12096	2
*27	SCREW-10-24 x 3/4	88022	6	55	NUT-hex, 10-24	81208	1
*28	BRACKET-handle bar	12059-2	1	*56	DEFLECTOR-air (exhaust)	A-12153	1
*29	HANDLE BAR	A-12107	1	*57	FITTING-oil line	12135	1
*30	SCREW-hex hd. w/washer, 10-24 x 5/16	88020	2	*58	LINE-oil	12165	2
				59	FINDER-oil	A-65172	1

* Denotes new parts

Note: Remove Screen, index #51 when using Heat Exchanger

350 · 350HG · 350 SL automatic saws

MUST BE TOWARD CRANKCASE

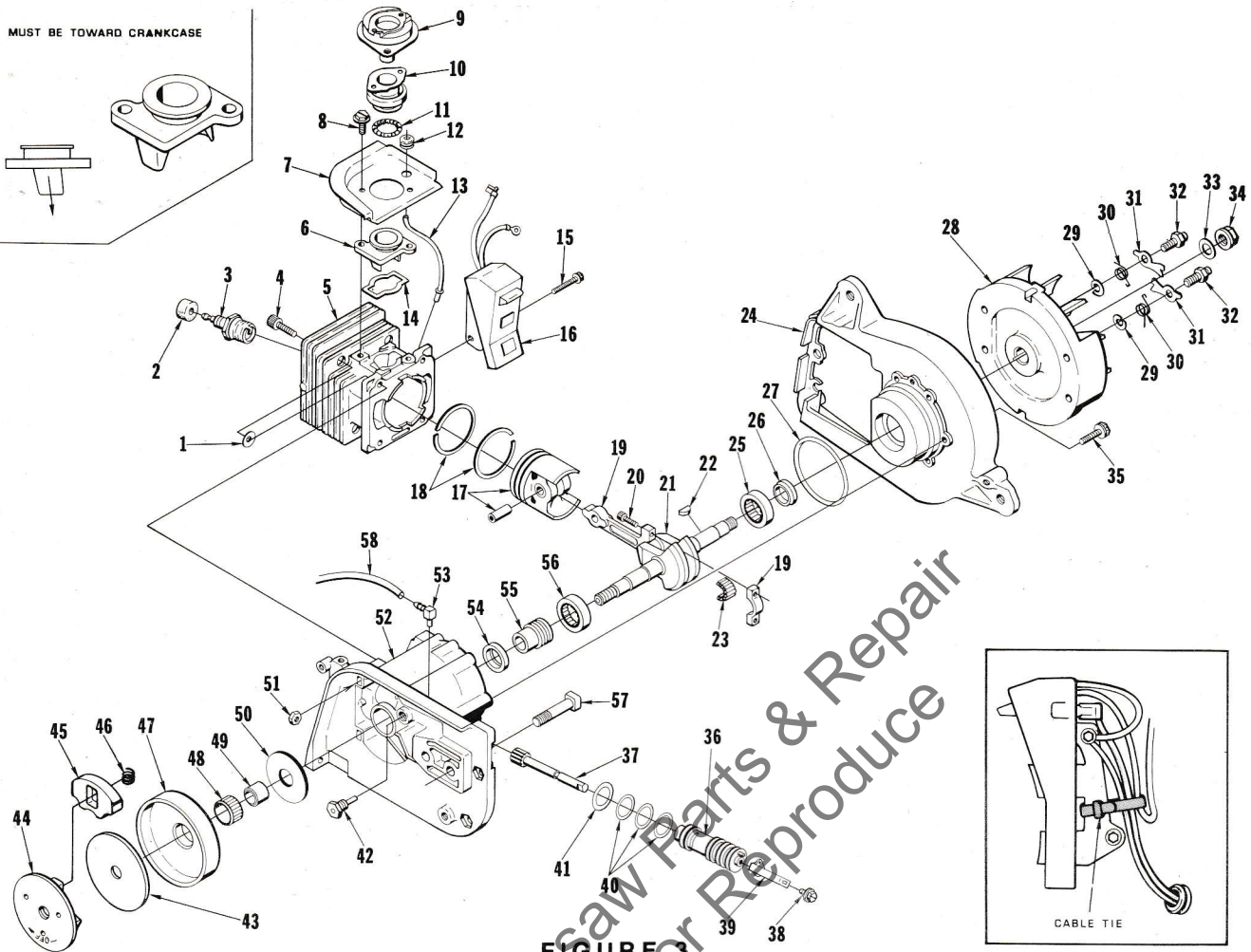
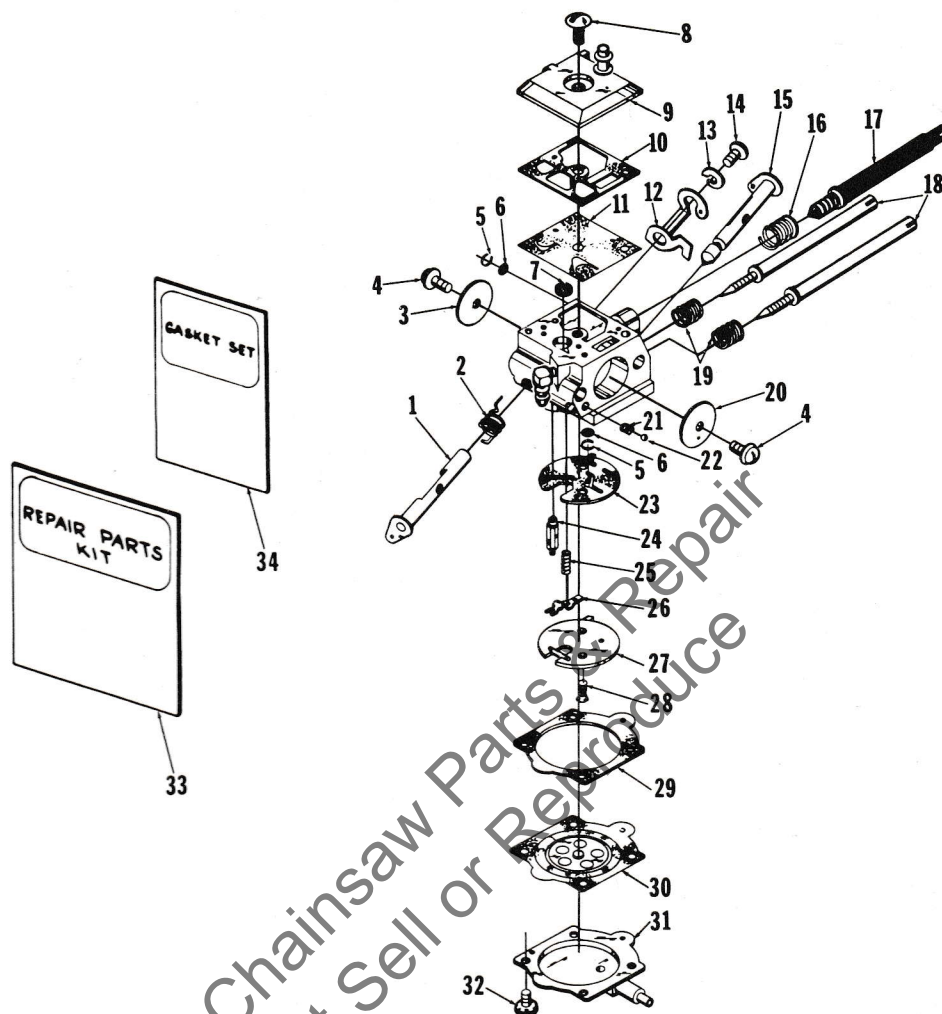


FIGURE 3

No.	Description	Part No.	Qty.	No.	Description	Part No.	Qty.
* 1	WASHER	12021	4	33	WASHER-3/8	84099	1
* 2	GROMMET-spark plug	12191	1	*34	NUT-3/8-24	81233	1
3	SPARK PLUG	65130-S	1	*35	SCREW-hex hd. w/washer, #10-24 x 3/4	88022	5
* 4	SCREW-soc. hd. cap, 10-24 x 7/8	82262	4	*36	PUMP-automatic oiler	A-12201	1
* 5	CYLINDER	A-12248	1		Includes:		
* 6	MANIFOLD-intake	12046	1	*37	PLUNGER-oil pump	A-12202	1
* 7	DEFLECTOR-air (intake)	12161-1	1	*38	SCREW-hex hd. w/washer, 8-32 x 3/8	88026	1
* 8	SCREW-hex hd. w/washer, 10-24 x 1/2	88024	2	*39	LEVER-oil adjustment	12141	1
* 9	FLANGE-carburetor connector	12062-1	1	*40	"O" RING	12095	3
*10	CONNECTOR-carburetor	12048	1	*41	"O" RING	12155	1
*11	SPRING-garter	12291	1	*42	PIN & PLUG	A-12144	1
12	GROMMET	62740	1	43	COVER-clutch	63671	1
*13	LINE-pulse	A-12256	1	*	CLUTCH ASSEMBLY	A-69459	1
*14	GASKET-intake adapter	12047	1		Includes:		
*15	SCREW-hex hd. w/washer, 8-32 x 1-1/4	82194	2	*44	PLATE-clutch	65760-2	1
*16	MODULE & CORE	12669	1	*45	SHOE-clutch	69458	3
*17	PISTON & PIN	A-12257	1	*46	SPRING-clutch	63977	3
*18	Includes: PISTON RING	12040	2	47	DRUM & SPROCKET (350, 350HG only)	A-68465	1
*19	ROD-connecting	A-12068-1	1	48	BEARING-needle	64124	1
	Includes			49	RACE-inner	65985-A	1
20	SCREW-soc. hd., 8-32 x 9/16	80805	2	50	WASHER-thrust	63860	1
*21	CRANKSHAFT	12037-1	1	*51	NUT-centerlock, #10-24	81208	4
22	KEY-woodruff	75078	1	*52	CRANKCASE	A-12251	1
*23	ROLLERS-needle (set of 25)	A-12102	1		Includes:		
*24	PLATE-back	A-12204	1	53	FITTING-oil line	50558	1
*25	Includes: BEARING-roller	63867	1	*54	SEAL	12282	1
*26	SEAL	12282	1	*55	WORM	12071	1
27	"O" RING	58785	1	*56	BEARING-roller	63867	1
*28	ROTOR	12101	1	57	BOLT-guide bar	58753	2
29	WASHER-lock #10	83046	2	*58	LINE-oil	12165	1
*30	SPRING-starter pawl	12055	2	*	TIE-cable (module leads)	12298	1
*31	PAWL-starter	12056	2				
32	STUD-starter pawl	65109	2				

* Denotes new parts



A-12160

HDC - 16

No.	Description	Part No.	Qty.	No.	Description	Part No.	Qty.
* 1	SHAFT-throttle	12278	1	19	SPRING-needle adjustment	†67377	2
2	SPRING-throttle return	†67376	1	20	VALVE-choke	67365	1
* 3	VALVE-throttle	12289	1	21	SPRING-choke friction	†64238	1
4	SCREW-valve	†67372	2	22	BALL-choke friction	†60051	1
5	RING-screen retaining	†67360	2	23	GASKET-circuit	†67367	1
6	SCREEN-check valve	†67381	2	24	VALVE-inlet needle	†64229	1
7	SCREEN-fuel inlet	†64243	1	*25	SPRING-metering lever	†12249	1
8	SCREW-fuel pump	67374	1	26	LEVER-metering	†67383	1
* 9	COVER-fuel pump	12196	1	*27	PLATE-circuit	12277	1
10	GASKET-fuel pump	†67368	1	28	SCREW-circuit plate	67375	2
11	DIAPHRAGM-fuel pump	†67370	1	29	GASKET-metering diaphragm	†64231	1
*12	STOP-throttle	12105	1	30	DIAPHRAGM-metering	†67371	1
*13	WASHER-#4	12281	1	*31	COVER-metering diaphragm	12250	1
*14	SCREW-button hd. socket cap	12280	1	32	SCREW-metering cover	64689	4
15	SHAFT-choke	68632	1	*33	REPAIR KIT	12279	1
*16	SPRING-idle adjustment	12199	1	34	GASKET SET	†67369	1
*17	SCREW-idle adjustment	12197	1		REPAIR KIT-check valve	65386	1
*18	NEEDLE-idle adjustment	†12198	2		DRIVER-check valve (accessory)	24173	1

†Indicates contents of Repair Kit 12279

*Denotes new parts

†Indicates contents of Gasket Set

350HG automatic saws only

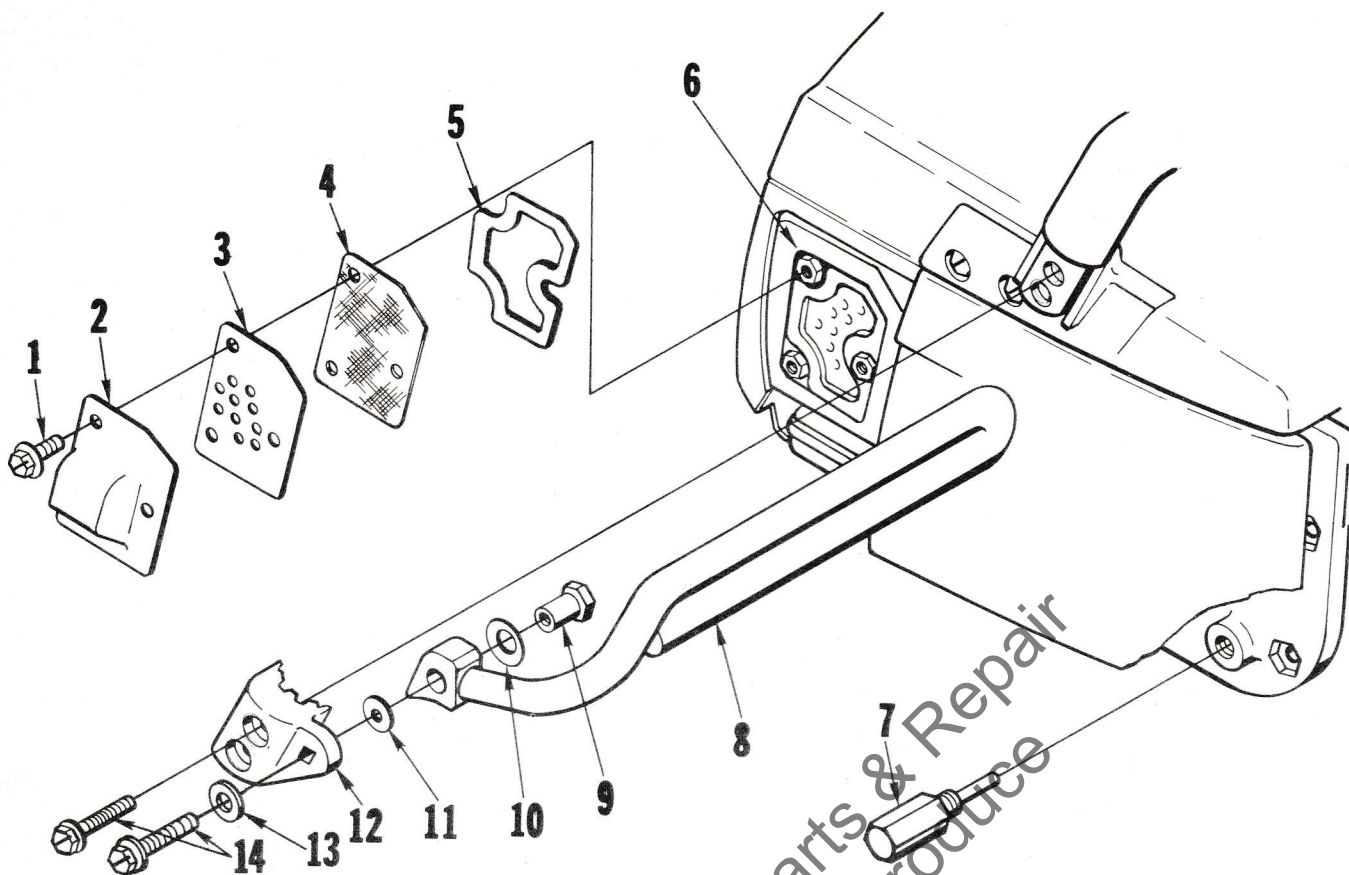


FIGURE 4

No.	Description	Part No.	Qty.	No.	Description	Part No.	Qty.
* 1	SCREW-8-32 x 3/8	88026	3	* 8	KIT-hand guard	A-12258	1
* 2	PLATE-muffler exhaust	12195-1	1	* 9	Includes: GUARD-kickback	A-12243-1	1
* 3	BAFFLE	12119	1	* 9	SPACER-nut	12240	1
* 4	ARRESTOR-spark (accessory)	12270	1	*10	WASHER-cupped spring	12239	1
* 5	GASKET-exhaust plate	12173	1	*11	WASHER	58851-2	1
* 6	MUFFLER	A-12265	1	*12	BRACKET-hand guard	12238-1	1
	Includes:			*13	WASHER	12296	1
* 7	GASKET-muffler (shown on Fig. 1)	12080	1	*14	SCREW-hex hd. w/washer	10-24 x 1-1/4	88023
* 7	PIN-isolator (crankcase to fuel tank)	12268	1				3

FOR ALL UNITS

ACCESSORIES

*ARRESTOR-spark	12270
*FILTER ELEMENT-air	12128
*KIT-Chain Brake	A-12237
*KIT-Hand Guard	A-12258
LINE-fuel and oil (10 feet)	69656
ROPE-starting #4, 250 ft. reel	68848

PAINT

SPRAY CAN-black	22772
SPRAY CAN-red	23475

*Denotes new parts

TOOLS

ANVIL-bearing removal (crankcase)	23846-1
ANVIL-bearing removal (crankcase & backplate)	23846-2
*PLUG-bearing & seal installation & removal	24827
*PLUG-seal installation	24826
*PLUG-oil pump alignment	24868
PULLER-rotor	A-24290
SLEEVE-seal assembly (crankcase & backplate)	23759
SLEEVE-seal removal (crankcase)	23136-6
*TOOL & PLUNGER-piston pin	A-24871
*WRENCH-combination	A-24824
WRENCH-spanner ("S" clutch)	A-23696-A
WRENCH-spanner (spider clutch)	A-23934

Refer to tool sheet #24873 for complete tool information.

350 SL automatic saws only

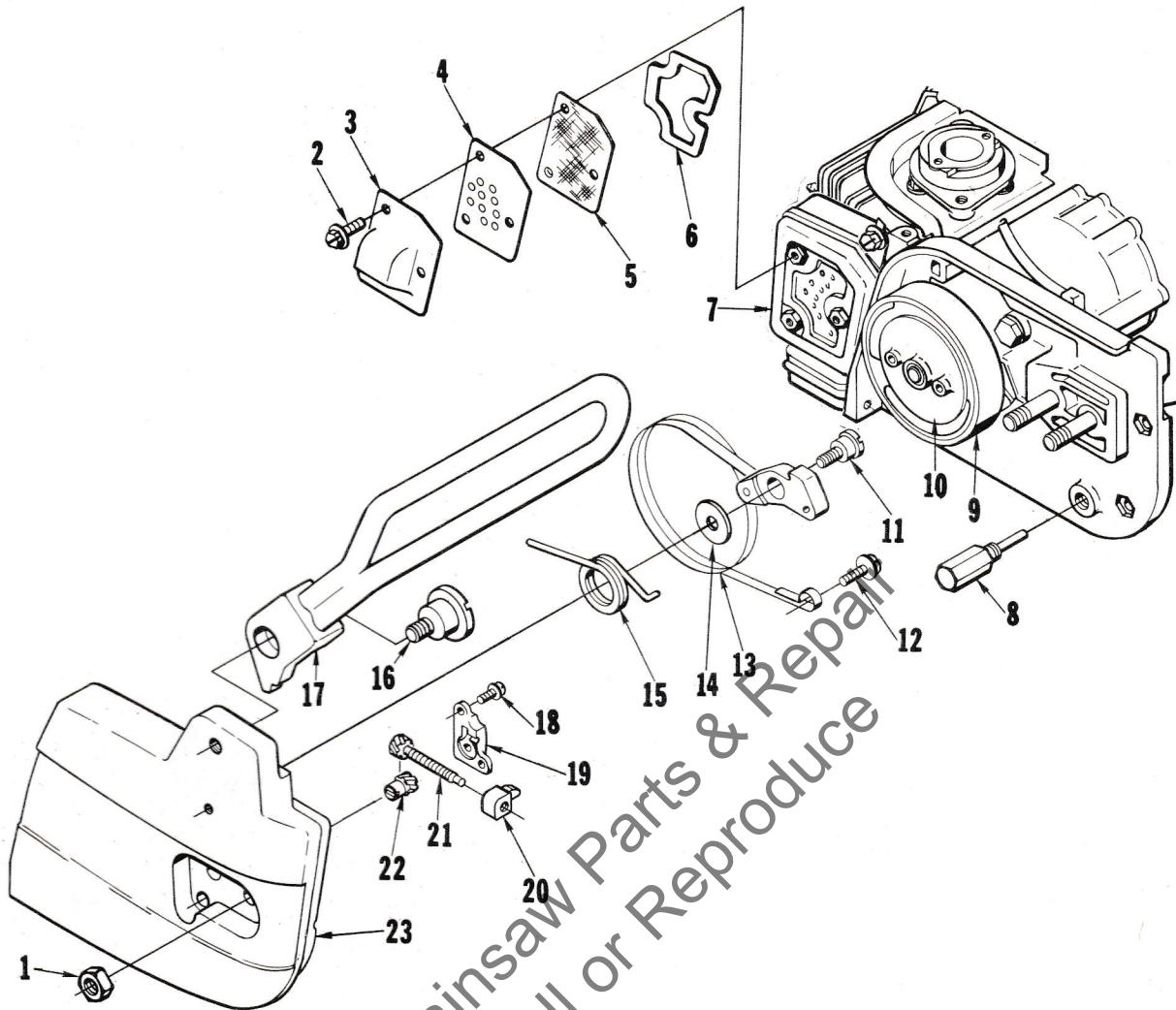


FIGURE 5

No.	Description	Part No.	Qty.
1	NUT-hex, 5/16-18	81196	2
* 2	SCREW-hex hd. w/washer, 8-32 x 3/8	88026	3
* 3	PLATE-muffer exhaust	12195-1	1
* 4	BAFFLE	12119	1
* 5	ARRESTOR-spark (accessory)	12270	1
* 6	GASKET-exhaust plate	12173	1
* 7	MUFFLER	A-12265	1
	Includes:		
	GASKET-muffer (shown on fig. 1)	12080	1
* 8	PIN-isolator (crankcase to fuel tank)	12268	1
*	KIT-Chain Brake	A-12237	1
	Includes:		
* 9	DRUM & SPROCKET	A-12294-1	1
*	CLUTCH-"S" (not shown)	12122-2	1
*10	PLATE-clutch	12154	1
*11	SCREW-shoulder	12371-1	1
*12	SCREW-pan hd., 1/4-20 x 5/8	82258	1
*13	BRAKE BAND & LEVER	A-12157	1
*14	WASHER-spring retaining	12290	1
*15	SPRING-torsion	69553	1
*16	SCREW-shoulder (brake lever)	12379-1	1
*17	LEVER-brake w/guard	A-12156	1
*18	SCREW-pan washer hd., 6-32 x 3/8	82251	2
*19	COVER-gear	12134	1
*20	PIN-guide bar adjusting	12133-1	1
*21	SCREW-guide bar adjusting	A-12132	1
*22	ADJUSTER-guide bar	A-12137	1
*23	COVER-drivecase	A-12297-1	1

* Denotes new parts

Part No.	Description	Qty.	Part No.	Description	Qty.	Part No.	Description	Qty.	Part No.	Description	Qty.
*12021	Washer	4	*12154	Plate-clutch	1	*A-12295-1	Cover-drivecase	1	65386	Kit-repair	1
*12033-3	Cover-air filter	1	*12155	"O" Ring	1	*12296	Washer	1	*65760-2	Plate-clutch	1
*12037-1	Crankshaft	1	*A-12156	Lever-brake	1	*A-12297-1	Cover-drivecase	1	65985-A	Race-inner	1
*12040	Piston Ring	2	*A-12157	Brake Band Lever	1	*12298	Tie-cable	1	67360	Ring-screen	2
*12042-2	Brace-handle	1	*A-12160	Carburetor	1	*A-12299	Transformer	1	67365	Valve-choke	1
*12046	Manifold-intake	1	*12161-1	Deflector-air	1	*12371-1	Screw-shoulder	1	67367	Gasket-circuit	1
*12047	Gasket-intake	1	*12162	Plate-guide bar	1	*12379-1	Screw-shoulder	1	67368	Gasket-fuel pump	1
*12048	Connector-carb.	1	*12163	Plate-guide bar	1	*12523	Cover-starter	1	67369	Gasket Set	1
*12049	Grip-throttle	1	*12165	Line-oil	3	*12629	Receptacle	1	67370	Diaphragm-fuel	1
*12051	Spring-torsion	2	*12173	Gasket-exhaust	1	*12669	Module & Core	1	67371	Diaphragm	1
*12052	Shield-spring	1	*12176-1	Plate-exhaust	1	*A-12718	Lead-ground	1	67372	Screw-valve	2
*12053	Bushing-starter	1	*12191	Grommet	1	*12788	Contact-trans.	2	67374	Screen-fuel pump	1
*12054	Grommet-Hi-Lo	1	*12192	Decal-starter	1	*12791-A	Screw-Plastite	2	67375	Screw-circuit	2
*12055	Spring-starter	2	*12195-1	Plate-muffler	1	*12793	"On"- "Off" Plate	1	67376	Spring-throttle	1
*12056	Pawl-starter	2	*12196	Cover-fuel pump	1	*22772	Paint-black	1	67377	Spring-needle	2
*12059-2	Bracket-handle	1	*12197	Screw-idle	1	23136-6	Sleeve-seal	1	67381	Screen-check valve	2
*12062-1	Flange	1	*12198	Needle-idle	2	23475	Paint-red	1	67383	Lever-metering	1
*A-12068-1	Connecting Rod	1	*12199	Spring-idle	1	A-23696-A	Wrench-spanner	1	A-68053	Line-fuel	1
*12071	Worm	1	*A-12201	Pump-automatic	1	23759	Sleeve	1	68279	Grommet	1
*12074-2	Shield-cylinder	1	*A-12202	Plunger	1	23846-1	Anvil	1	A-68465	Drum & Sprocket	1
*12078-1	Rod-throttle	1	*A-12204	Plate-back	1	23846-2	Anvil	1	68632	Shaft-choke	1
*12080	Gasket-muffler	1	*A-12214	Pulley & Cup	1	A-23934	Wrench-spanner	1	68837	Insert-rope	1
*12089	Shield-pulley	1	*A-12222	Cap-oil filler	1	A-24290	Wrench-rotor	1	68848	Rope-starting	1
*12090	Trigger	1	*A-12225	Filter-element	1	24173	Driver	1	*69451	Valve-check	2
*12091-1	Latch-trigger	1	*A-12227	Shaft-choke	1	*A-24824	Wrench	1	*69454	Filter-filler cap	2
*12092	Lever-trigger	1	*A-12234	Lead-low tension	1	24826	Plug-seal	1	*69458	Shoe-clutch	3
*12093	Lock-trigger	1	*A-12237	Kit-chain brake	2	*24827	Plug	1	*A-69459	Clutch	1
*12094-1	Screw-trigger	1	*12238-1	Bracket-hand	1	*24868	Plug-oil pump	1	A-69500	Cap-fuel filler	1
*12095	"O" Ring	3	*12239	Washer-cupped	1	*A-24877	Tool & Plunger	1	69501	Gasket-fuel cap	1
*12096	Bumper	2	*12240	Spacer-nut	1	50558	Fitting-oil line	1	*69502	Chain-bead	2
*12100	Pin-isolator	4	*A-12243-1	Guard-kickback	1	A-57650-3	Switch-grounding	1	69503	Retainer	2
*12101	Rotor	1	*A-12248	Cylinder	1	58753	Bolt-guide bar	2	*69553	Spring-torsion	1
*A-12102	Rollers-needle	1	*12249	Spring-metering	1	58785	"O" Ring	1	69656	Line-fuel & oil	1
*12105	Stop-throttle	1	*12250	Cover-metering	1	*58851-2	Washer	1	*71478	Pin-dowel	3
*A-12107	Handle Bar	1	*A-12251	Crankcase	1	60051	Ball-choke	1	72084-A1	Nut	1
*12109-1	Bushing-flange	1	*12253	Heat Exchanger	1	62740	Grommet	1	75078	Key-woodruff	1
*12110	Bushing-nylon	1	*A-12256	Line-pulse	1	63671	Cover-clutch	1	FASTENING PARTS		
*A-12112	Nut-filter cover	1	*A-12257	Piston & Pin	1	63860	Washer-thrust	1	80668	10-32 x 7/16	2
*A-12114-1	Housing-rewind	1	*A-12258	Kit-hand guard	1	*63867	Bearing-roller	2	80805	8-32 x 9/16	2
*12117-1	Plate-spring	1	*A-12265	Muffler	1	A-63920	Pick-up fuel	1	81196	Nut-5/16-18	4
*12119	Baffle	1	*12268	Pin-isolator	2	*63977	Spring-clutch	3	81206	Nut-10-32	2
*12122-2	Clutch	1	*12269	Screen-air inlet	1	64083-1	Filter-felt	1	81208	Nut-10-24	5
*12126	Gasket-oil cap	1	*12270	Arrestor-spark	1	64124	Bearing-needle	1	*81233	Nut-3/8-24	1
*12128	Filter-air	1	*A-12272	Bumper-spiked	1	64155-A	Grip-starting	1	*82194	8-32 x 1-1/4	2
*A-12132	Screw-guide bar	3	*12277	Plate-circuit	1	64182	Washer	1	82215	6 x 3/8	2
*12133-1	Pin-guide bar	2	*12278	Shaft-throttle	1	64229	Valve-needle	1	*82251	6-32 x 3/8	4
*12134	Cover-gear	1	*12279	Kit-repair	1	64231	Gasket-metering	1	*82256	6 x 1/4	2
*12135	Fitting-oil line	1	*12280	Screw-button	1	64238	Spring-choke	1	*82258	1/4-20 x 5/8	1
*A-12137	Adjuster	2	*12281	Washer-#4	1	64243	Screen-fuel inlet	1	*82262	10-24 x 7/8	4
*12140	Nut-push	1	*12282	Seal	2	64689	Screw-metering	4	83046	Washer-#10	2
*12141	Lever-oil	1	*12283	Plug-cyl. shield	1	65102	Lock-spring	1	84099	Washer-3/8	1
*A-12144	Pin & Plug	1	*12285	Isolator	4	65107	Spring-rewind	1	*88020	10-24 x 5/16	4
*12145	Knob-choke	1	*A-12286	Housing-engine	1	65109	Stud-starter pawl	2	*88022	10-24 x 3/4	18
*12147	Bushing	1	*12289	Valve-throttle	1	65118	Rope-starter	1	*88023	10-24 x 1-1/4	3
*12149-1	Rod-choke	1	*12290	Washer-retainer	1	65130-S	Spark Plug	1	*88024	10-24 x 1/2	4
*12150	Washer-wave	1	*12291	Spring-garter	1	A-65172	Finder-oil	1	*88025	10-24 x 1-3/4	2
*A-12153	Deflector-air	1	*A-12294-1	Drum & Sprocket	1	65185	Bushing-ropo	1	*88026	8-32 x 3/8	11
									*88027	8-32 x 1/2	2

* Denotes new parts



A textron DIVISION

PORT CHESTER, NEW YORK, U.S.A. 10573

E1 1137CJZ