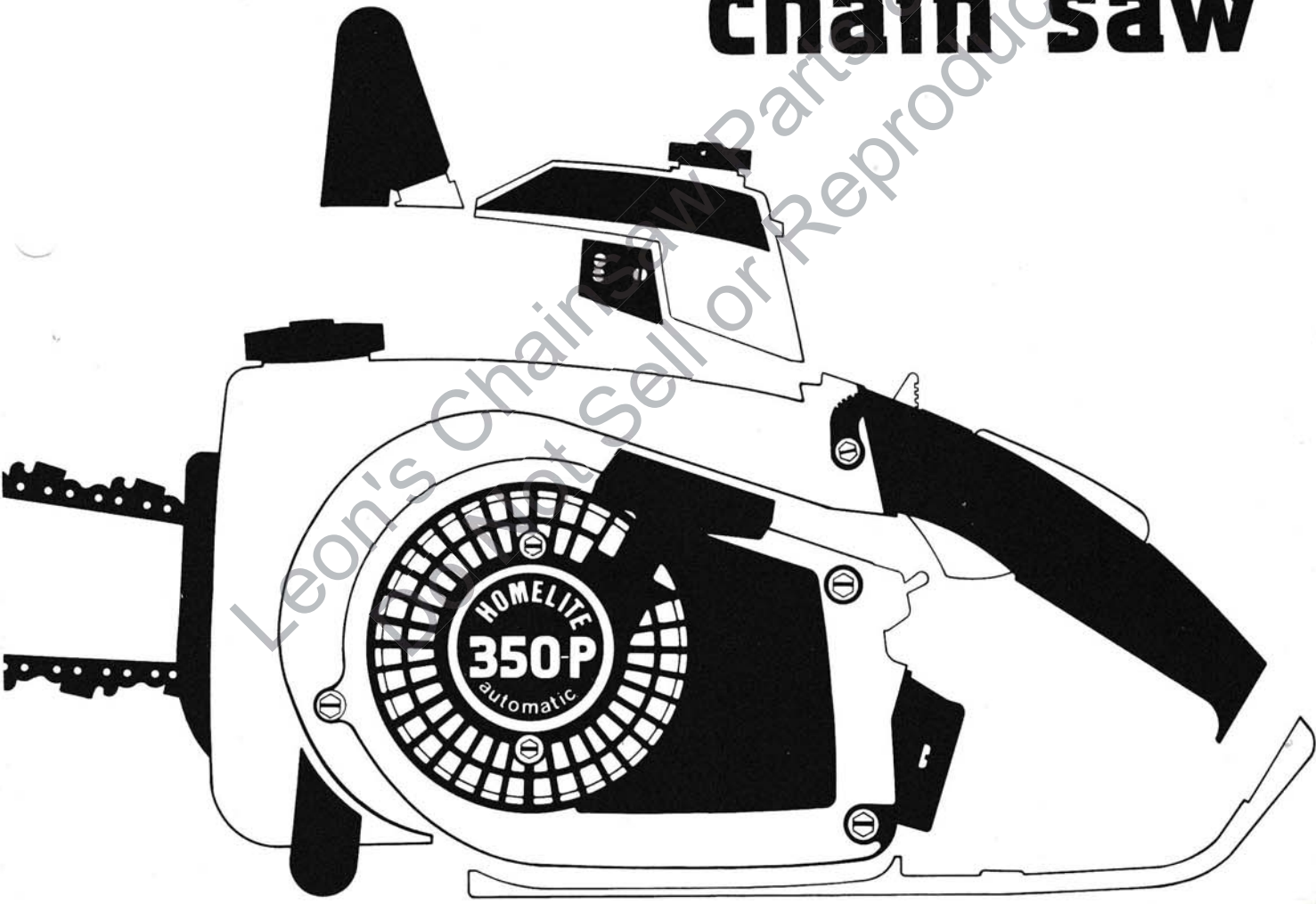


parts list

350-P

automatic
chain saw



TERRY

INDUSTRIES

A DIVISION OF **Extron** CANADA LIMITED
180 Labrosse Ave., Pointe Claire, Que

350-P

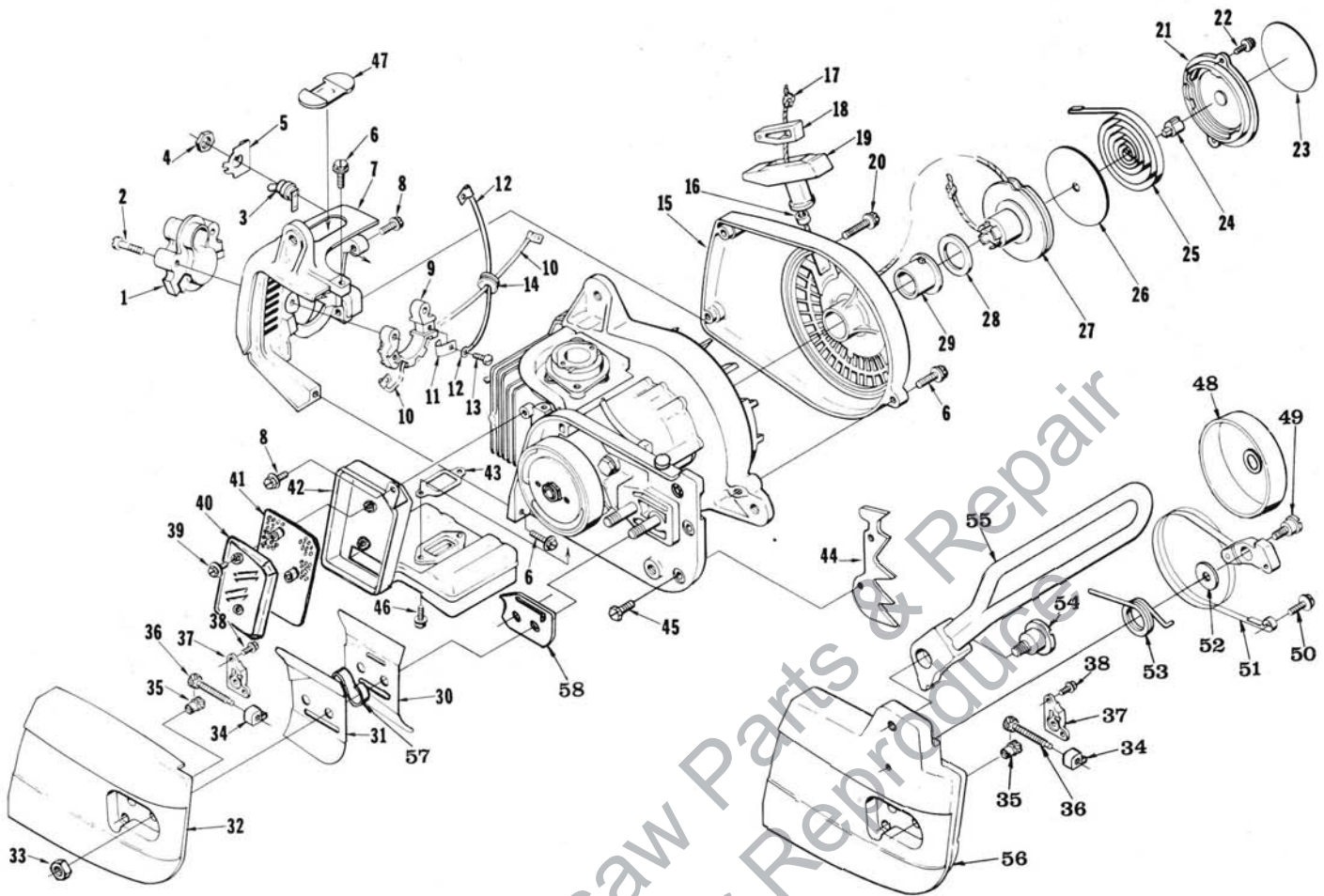


FIGURE 1

No.	Description	Part No.	Qty.	No.	Description	Part No.	Qty.
1	TRANSFORMER	A-12299-A	1	34	PIN-guide bar adjusting	122466-1	1
2	Includes: SCREW- #10-24x1" GROMMET-not shown	70068 12191	2 1	35	ADJUSTER-guide bar	A-12137	1
3	SWITCH-grounding	A-57650-3	1	36	SCREW-guide bar adjusting	A-12132	1
4	Includes: NUT	72084-A1	1	37	COVER-gear	12134	1
5	"ON-OFF" PLATE	12793-A	1	38	SCREW-pan washer hd., 6-32 x 3/8	82251	2
6	SCREW-hex hd. w/washer, 10-24 x 3/4	88022	4	39	SCREW-8-32 x 1-1/4	88037	2
7	SHIELD-cylinder	12074-2T	1	40	CAP-Muffler	122497-1	1
8	SCREW-kex hd. w/washer, 10-24 x 1/2	88024	2	41	BAFFLE	A-122499	1
9	RECEPTACLE-transformer	12629-A	1	42	MUFFLER	A-122495-1	1
10	LEAD-low tension	A-12719	1	43	GASKET-muffler	12080-A	1
11	CONTACT-transformer	12788	2	44	BUMPER-spiked (optional)	A-12272-A	1
12	LEAD-ground	A-12718	1	Includes:			
13	SCREW-Plastite pan hd., 6 x 3/8	82215	2	45	SCREW-hex hd., 10-24 x 3/8	88031	2
14	GROMMET	68279	1	46	SCREW-hex w/washer, 10-24 x 5/16	88020	2
15	HOUSING-rewind starter	A-12114	1	47	PLUG-cylinder shield	12283	1
16	Includes: BUSHING-ropes	65185	1	*KIT-Chain-Brake (optional)	A-12237-AT	1	
17	ROPE-starter	12972	1	Includes: items 34 to 38 and			
18	INSERT-ropes retaining	68837-AT	1	48	DRUM & SPROCKET	A-69436-3	1
19	GRIP-starting rope	64155-B	1	49	SCREW-shoulder	12371-1	1
20	SCREW-hex hd. w/washer, 10-24 x 1-3/8	88035	1	50	SCREW-pan hd., 1/4-20 x 5/8	82258	1
21	COVER-starter	12523	1	51	BRAKE BAND & LEVER	A-12962	1
22	SCREW-hex hd., w/washer, 8-32 x 1/2	88027	2	52	WASHER-spring retaining	12290	1
23	DECAL-starter cover	12192-T	1	53	SPRING-torsion	70093	1
24	LOCK-spring	65102	1	54	SCREW-shoulder (brake lever)	12955	1
25	SPRING-rewind	65107	1	55	LEVER-brake w/guard	A-12952	1
26	SHIELD-spring	12052	1	56	COVER-drivecase	A-12953-1	1
27	PULLEY & CUP	A-12214	1	57	SPRING-guide bar	122431	1
28	SHIELD-pulley	12089	1	58	PLATE-adapter	122430	1
29	BUSHING-starter cup	12053	1				
30	PLATE-guide bar (inner)	122433	1				
31	PLATE-guide bar (outer)	122434	1				
32	COVER-drivecase	12120-2T	1				
33	NUT-hex, 5/16-18	81196	2				
					PAINT		
					SPRAY CAN-black	22772	
					SPRAY CAN-red	23475	

350-P

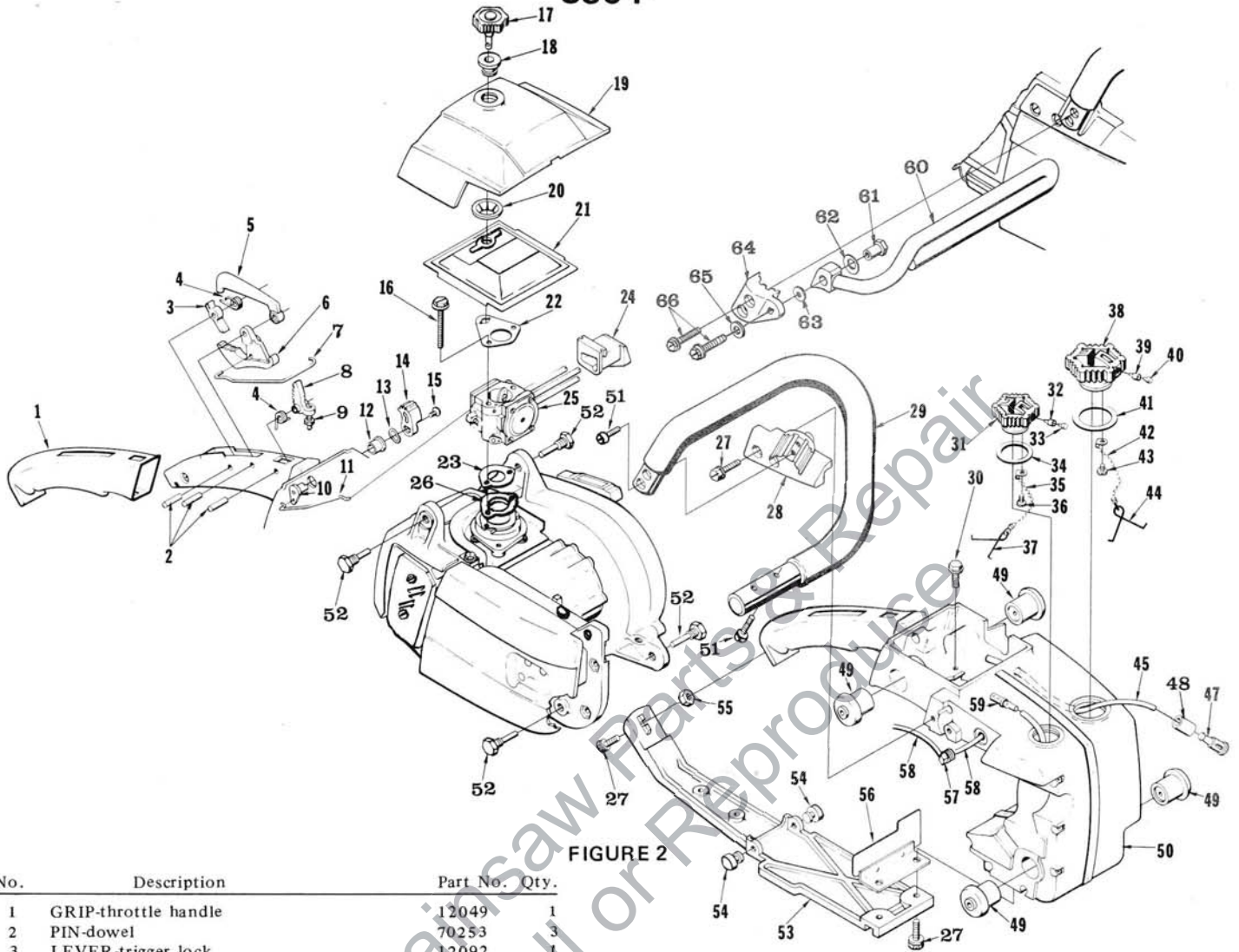


FIGURE 2

No.	Description	Part No.	Qty.
1	GRIP-throttle handle	12049	1
2	PIN-dowel	70253	3
3	LEVER-trigger lock	12092	1
4	SPRING-torsion	12051	2
5	LOCK-trigger	12093	1
6	TRIGGER	12090-A	1
7	ROD-throttle	12078-1A	1
8	LATCH-trigger	12091-1A	1
9	SCREW-trigger latch	12094-1A	1
10	SHAFT-choke	A-12227	1
11	ROD-choke	12149-A	1
12	BUSHING	12147	1
13	WASHER-wave	12150	1
14	KNOB-choke	12145	1
15	SCREW-8-32 x 1/2	88027	1
16	SCREW-hex hd. w/washer, 10-24 x 1-3/4	88025	2
17	NUT-filter cover mounting	A-12112	1
18	BUSHING-nylon	12110	1
19	COVER-air filter	122444-2	1
20	NUT-push-on spring	12140	1
21	FILTER ELEMENT-air	A-122442	1
22	PLATE-spring	12117-1	1
23	GASKET-carburetor	122474	1
24	GROMMET-"HI-LO"	12054	1
25	CARBURETOR	A-122527	1
26	FLANGE-carb	122471	1
27	SCREW-10-24 x 3/4	88022	5
28	BRACKET-handle bar	12059-2	1
29	HANDLE BAR	A-122503-1	1
30	SCREW-hex hd. w/washer, 10-24 x 5/8	88020	2
31	CAP-oil filler	A-12222	1
	Includes:		
32	VALVE-check (oval duckbill)	69451	1
33	FILTER-filler cap	69454	1
34	GASKET-oil cap	12126	1
35	CHAIN-bead	69502	1
36	SCREW-pan hd. Plastite, 6 x 1/4	82256	1
37	RETAINER	69503	1

No.	Description	Part No.	Qty.
38	CAP-fuel filler	A-69500	1
	Includes:		
39	VALVE-check (oval duckbill)	69451	1
40	FILTER-filler cap	69454	1
41	GASKET-fuel cap	69501	1
42	CHAIN-bead	69502	1
43	SCREW-pan hd. Plastite, 6 x 1/4	82256	1
44	RETAINER	69503	1
45	LINE-fuel	12973	1
47	PICK-UP-fuel	A-69923	1
48	Includes: FILTER-felt	64083	1
49	ISOLATOR-vibration	12285	4
50	HOUSING-engine	A-12045-2T	1
51	SCREW-fill. hd. 10-24 x 7/8	80660	4
52	PIN-isolator	122479	4
53	BRACE-handle	12042-2	1
54	BUMPER	12096	2
55	NUT-hex, 10-24	12992	1
56	DEFLECTOR-air (exhaust)	A-12153	1
57	FITTING-oil line	12135	1
58	LINE-oil	12165-A	2
59	FINDER-oil	A-65172	1
	KIT-hand guard (optional)	A-12258	1
60	Includes: GUARD-kickback	A-12243-1	1
61	SPACER-nut	12240	1
62	WASHER-cupped spring	12239	1
63	WASHER	58851-2	1
64	BRACKET-hand guard	12238-1	1
65	WASHER	12296	1
66	SCREW-hex hd. 10-24 x 1-1/4	88023	3

350-P

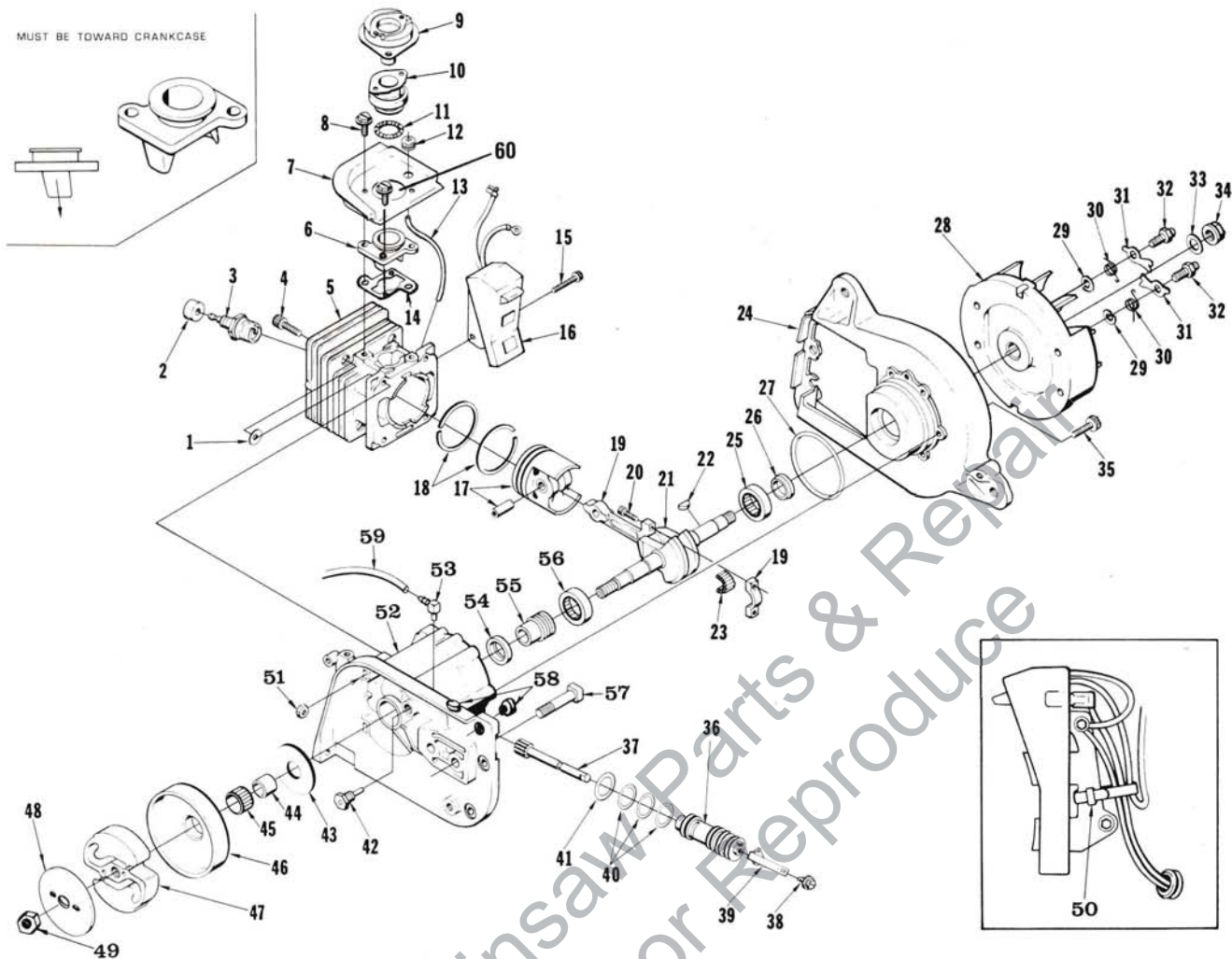
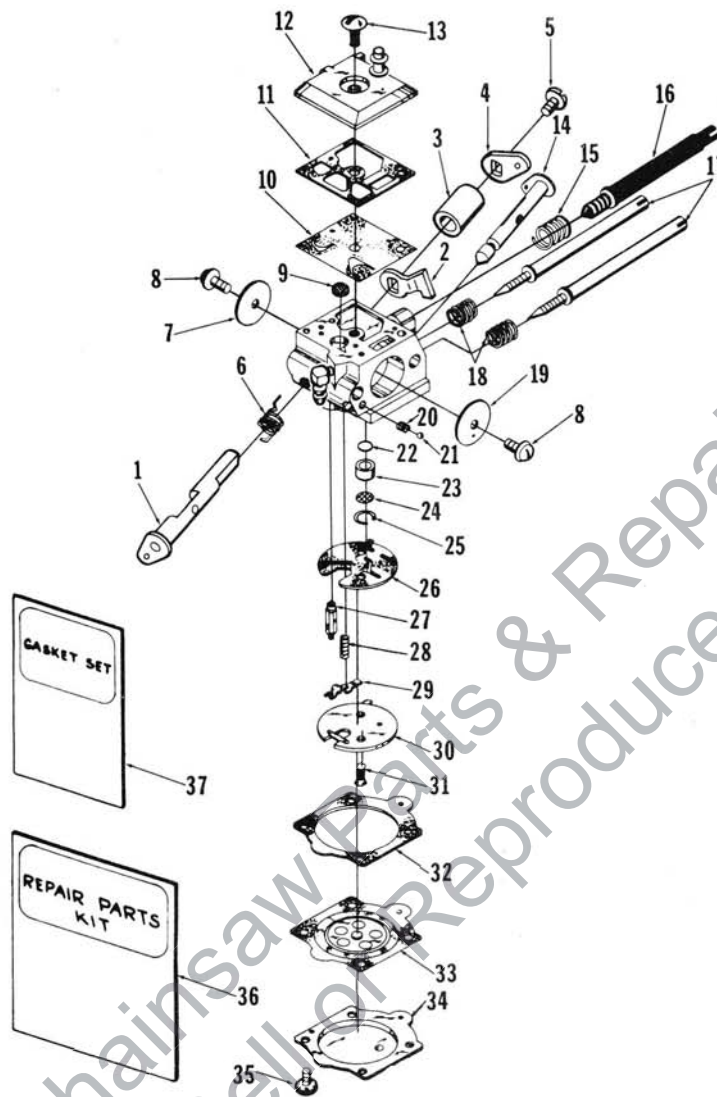


FIGURE 3

No.	Description	Part No.	Qty.	No.	Description	Part No.	Qty.
1	WASHER	12021	4	33	WASHER-3/8	84099	1
2	GROMMET-spark plug	12191	1	34	NUT-3/8-24	81233	1
3	SPARK PLUG	63547-S	1	35	SCREW-hex hd. w/washer, #10-24 x 3/4	88022	5
4	SCREW-soc. hd. cap, 10-24 x 7/8	82262	4	36	PUMP-automatic oiler	A-12201	1
5	CYLINDER (includes gasket 122473)	A-122507	1		Includes:		
6	MANIFOLD-intake	12046-1	1	37	PLUNGER-oil pump	A-12202	1
7	DEFLECTOR-air (intake)	12161-1AT	1	38	SCREW-hex hd. w/washer, 8-32 x 3/8	88026	1
8	SCREW-hex hd. w/washer, 10-24 x 1/2	88024	2	39	LEVER-oil adjustment	12141	1
9	FLANGE-carburetor connector	12062-1A	1	40	"O" RING	12095	3
10	CONNECTOR-carburetor	12048-B	1	41	"O" RING	12155	1
11	SPRING-garter	12291	1	42	PIN & PLUG	A-12144	1
12	GROMMET	62740	1	43	WASHER-thrust	122435	1
13	LINE-pulse	12254-A	1	44	RACE-inner	63990	1
14	GASKET-intake adapter	122472-A	1	45	BEARING-needle	64333	1
15	SCREW-hex hd. w/washer, 8-32 x 1-1/4	82194	2	46	DRUM-clutch	A-69436-1	1
16	MODULE & CORE	12669	1	47	CLUTCH-S	68362-4	1
17	PISTON & PIN	A-12257-A	1	48	PLATE-clutch	69915	1
18	Includes: PISTON RING	12040	2	49	NUT-clutch 7/16 L.H.	70048	1
19	ROD-connecting	A-12068-1	1	50	TIE-cable	12298	1
	Includes:			51	NUT-lock	81208	4
20	SCREW-soc. hd., 8-32 x 9/16	80805	2	52	CRANKCASE	A-12251-T	1
21	CRANKSHAFT	12037-1	1		Includes:		
22	KEY-woodruff	75078	1	53	FITTING-oil line	50558	1
23	ROLLERS-needle (set of 25)	A-12913	1	54	SEAL	12282-A	1
24	PLATE-back	A-12204	1	55	WORM	12071	1
25	Includes: BEARING-roller	63867	1	56	BEARING-roller	63867	1
26	SEAL	12282-A	1	57	BOLT-guide bar	58753	2
27	"O" RING	58785	1	58	BUMPER, rubber	12096	2
28	ROTOR	12101	1	59	LINE-oil	12165-A	1
29	WASHER-lock # 10	83046	2	60	SCREW-pan hd. #6-32 x 1/2	80630	2
30	SPRING-starter pawl	12055	2				
31	PAWL-starter	12056	2				
32	STUD-starter pawl	65109	2				

350-P



A-122527
HDC-26

No.	Description	Part No.	Qty.
	KIT - throttle shaft	A-12961	1
	Includes:		
1	SHAFT - throttle	12945	1
2	STOP - throttle	12943	1
3	SPACER - throttle	12944	1
4	LEVER - throttle	12942	1
5	SCREW - valve	67372	1
6	SPRING - throttle return	† 67376	1
7	VALVE - throttle	12289	1
8	SCREW - valve	† 67372	2
9	SCREEN - fuel inlet	† 64243	1
10	DIAPHRAGM - fuel pump	† 67370	1
11	GASKET - fuel pump	† 67368	1
12	COVER - fuel pump	12196	1
13	SCREW - pump cover	67374	1
14	SHAFT - choke	68632	1
15	SPRING - idle adjustment	12199	1
16	SCREW - idle adjustment	12197	1
17	NEEDLE - idle adjustment	† 12198	2
18	SPRING - needle adjustment	† 67377	2
19	VALVE - choke	67365	1
20	SPRING - choke friction	† 64238	1
21	BALL - choke friction	† 60051	1
	REPAIR KIT - check valve (accessory)	65386	1
22	Includes: VALVE - check	-	1
23	SEAT - valve	-	1
24	SCREEN - check valve	67381	1
25	RING - screen retaining	67360	1
26	GASKET - circuit	† 67367-A	1
27	NEEDLE - inlet	† 64229	1
28	SPRING - metering lever	† 12249	1

No.	Description	Part No.	Qty.
29	LEVER - metering	† 67383	1
30	PLATE - circuit (HDC - 16)	12277	1
31	SCREW - circuit plate	67375	2
32	GASKET - metering diaphragm	‡ 64231	1
33	DIAPHRAGM - metering	† 67371	1
34	COVER - metering diaphragm	122528	1
35	SCREW - metering cover	64689	4
36	REPAIR KIT	12279-A	1
37	GASKET SET	† 67369-A	1

	KIT - high altitude (accessory) Not Shown	A-12958	1
	Includes: PLATE - circuit	67382	1
	GASKET - circuit	67367-A	1
	LABEL	12959	1

† Indicates contents of Repair Kit 12279-A

‡ Indicates contents of Gasket Set 67369-A

TOOLS

ANVIL-bearing removal (crankcase)	23846-1
ANVIL-bearing removal (crankcase & backplate)	23846-2
PLUG-bearing & seal installation & removal	24827-A
PLUG-seal installation	24826-A
PLUG-oil pump alignment	24868
PULLER-rotor	A-24290
SLEEVE-seal assembly (crankcase & backplate)	23759
SLEEVE-seal removal (crankcase)	23136-6
TOOL & PLUNGER-piston pin	A-24871
SHIM, PLASTIC	24853
WRENCH-spanner ("S" clutch)	A-23696-A
PLATE, exhaust block off	122418

MODEL 350-P PARTS LIST NO. 122506

The " S " type clutch shown on Page 4, Items 46, 47, 48 and 49 should be used with Brake Kit only Part No. 12237-AT shown on Page 2 following Item 47.

The standard 350-P uses a 3 shoe clutch and part numbers are as follows.

46	Sprocket & Drum	122170-1	1
47	Plate Clutch	65760	1
47 A	Shoe Clutch (not shown)	69458	3
47 B	Spring Shoe (not shown)	63977	3
48	Cover - clutch	63671	1
49	Nut	not used	

LISTE DE PIECES DU MODELE 350-P NO. 122506

L'embrayage de type " S " démontré en page 4, item 46, 47, 48 et 49 doit être utilisé avec le frein de chaîne seulement portant le numéro de pièce 12237-AT illustré à la page 2 suivant l'item 47.

Le modèle standard 350-P utilise un embrayage à trois sabots et les numéros de pièces sont les suivants.

46	Tambour & Pignon	122170-1	1
47	Plaque d'embrayage	65760	1
47 A	Sabot d'embrayage (non illustré)	69458	3
47 B	Ressort de sabot (non illustré)	63977	3
48	Couvercle d'embrayage	63671	1
49	Ecrou	non utilisé	