

PART NO. 17505  
PRINTED IN U.S.A.  
PRICE 35¢

HOMELITE®

# 330 CHAIN SAWS

Models 330, 330SL, 330W



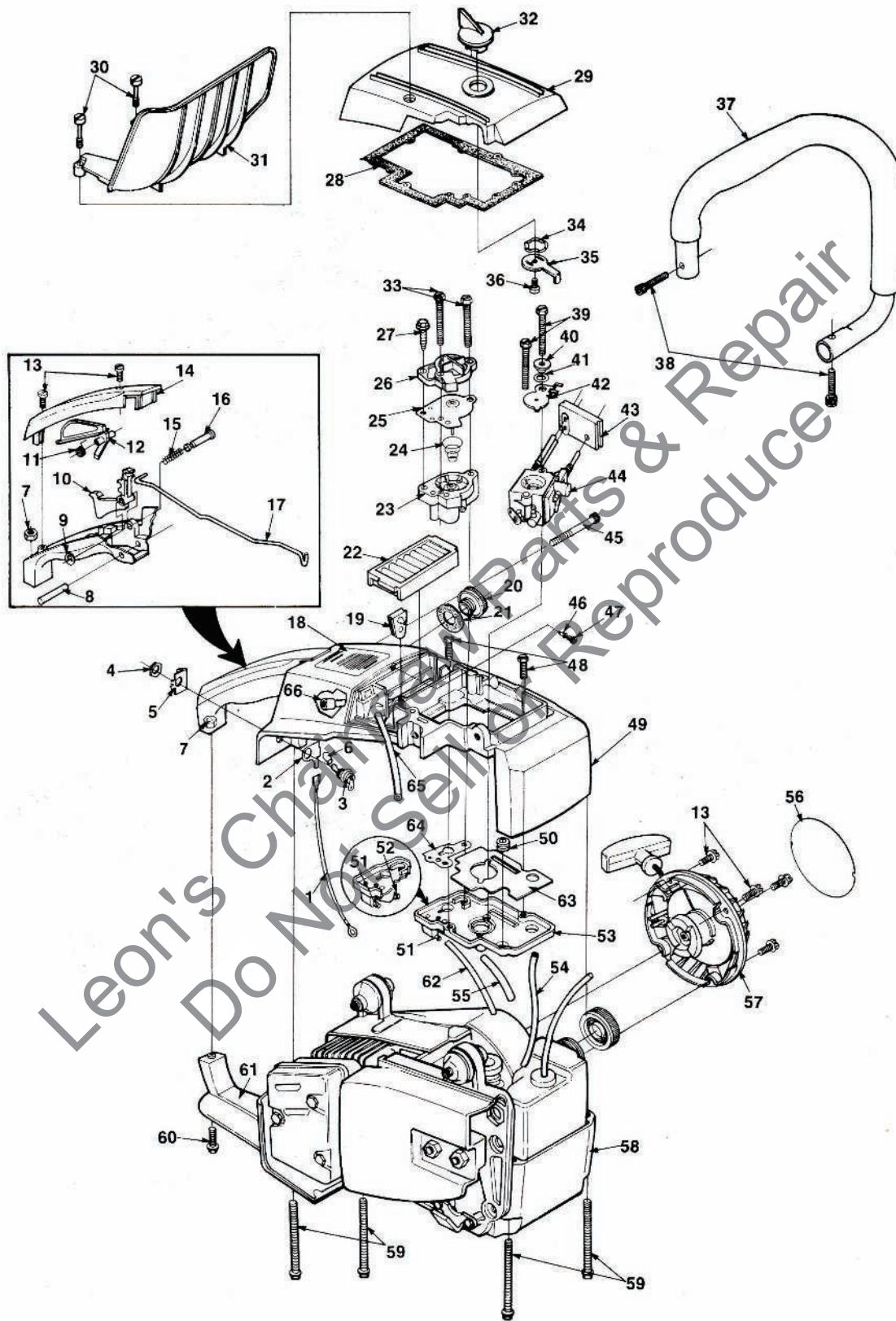
## PARTS LIST

**HOMELITE** **TEXTRON**

Homelite Division of Textron Inc.

# 330 CHAIN SAW

## FIGURE 1



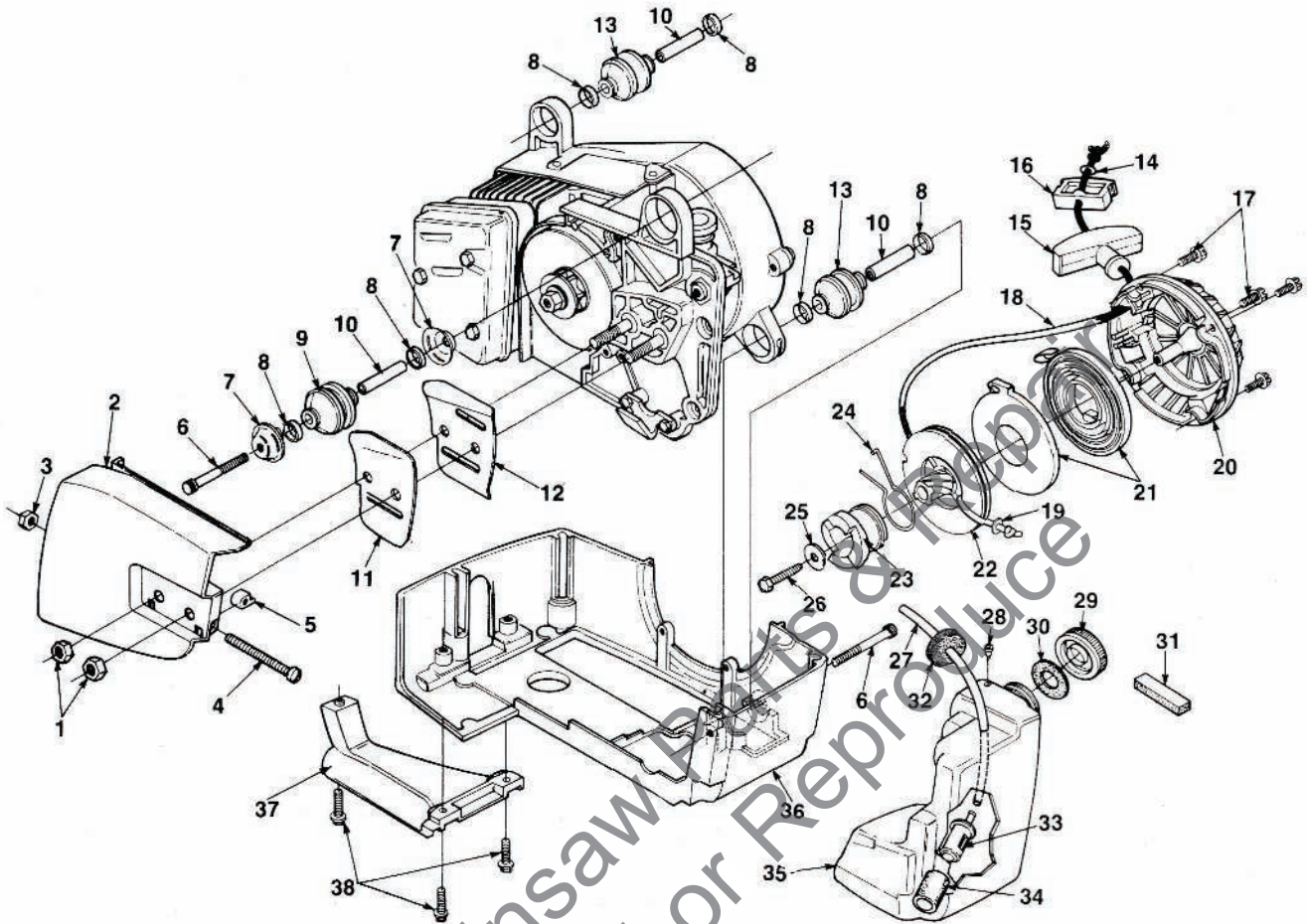
Leon's Chain Saws Parts & Repair  
Do Not Sell or Reproduce

# 330 CHAIN SAW FIGURE 1

No.	Description	Part No.	Qty.	No.	Description	Part No.	Qty.
1	LEAD- Electrical	A-95933	1	33	SCREW- Hex washer hd. (8-32 x 2)	82224	2
2	CONTACT- Ground	95874	1	34	WASHER- Wave	94388	1
3	SWITCH- Grounding	A-57650-3A	1	35	LEVER- Choke	94502	1
	Includes:			36	SCREW- Pan taptite (8-32 x 5/16)	82195	1
4	NUT- Hex	72084-A1	1	37	HANDLE BAR- Flush Cut	A-93853	1
5	PLATE- Ignition (Run-Stop)	12793-A	1	38	SCREW- Cap socket hd. (10-24 x 1)	82246	2
6	SLEEVE- Grounding switch	69092	1	39	SCREW- Mach. hex hd. (10-32 x 1 5/8)	82165	2
7	NUT- Locking hex (10-24)	81208	1	40	SPACER- Choke	94504	1
8	PIN- Groove	93517	2	41	WASHER- Wave	94382	1
9	RING- Retaining	58409	1	42	PLATE- Choke	94503	1
10	TRIGGER- Throttle	93842	1	43	GROMMET	94381	1
11	SPRING- Torsional	94379	1	44	CARBURETOR- Walbro (WT-1)	A-94380	1
12	THROTTLE Interlock	93843	1	45	SCREW- Cap socket hd. (10-24 x 1 3/4)	82377	1
13	SCREW- hex hd. (8-32 x 1/2)	80983	6	46	VALVE- Check	69451	1
14	COVER- Handle	93822	1	47	FILTER	69454	1
15	SPRING- Compression	95020	1	48	SCREW- Hex hd. (8-32 x 1/2)	80983	2
16	PIN- Throttle lock	94378	1	49	ENGINE- Housing (top)	A-95203	1
17	ROD- Throttle	94377	1	50	GROMMET	64862	1
18	DECAL- Warning	95633	1	51	FITTING- Tube	94619	1
19	GROMMET	94376	1	52	FITTING- Tube (L)	94392	1
20	CAP- Oil	A-95207	1	53	PLATE- Carb. chamber	94342-1	1
	Includes:			54	TUBING- Rubber 5 1/4"	93157-21	1
21	GASKET	94390	1	55	TUBING- Rubber 2"	95201-08	1
22	ELEMENT- Air filter	94387-A	1	56	DECAL- Starter housing	94386	1
23	BODY- Oil pump	A-94674	1	57	HOUSING- Starter	A-94736	1
24	SPRING- Oil pump	69447	1	58	HOUSING- Engine (Bottom)	93830-2	1
25	DIAPHRAGM & PLUNGER	A-94675	1	59	SCREW- Hex hd. (10-24 x 2.500)	88060	4
26	COVER- Oil pump	94395	1	60	SCREW- Sems hex hd. (10-24 x 3/4)	88051	1
27	SCREW- Thd. forming (8-16 x 5/8)	82380	1	61	BRACE- Handle	94763	1
28	GASKET- Oil filter cover	95921	1	62	TUBING- Rubber 3"	93112-12	1
29	COVER- Air filter	93828	1	63	GASKET- Carburetor	95342	1
30	SCREW- Self retaining (330 only)	93578	2	64	GASKET- Oil pump	94391	1
	SCREW- Rd. hd. (10-24) (330SL)	95792	2	65	TUBING- Rubber 10"	93112-40	1
31	GUARD- Hand (330 only)	95027	1	66	FINDER- Oil	A-68593	1
32	BUTTON- Choke	94389	1				

# 330 CHAIN SAW

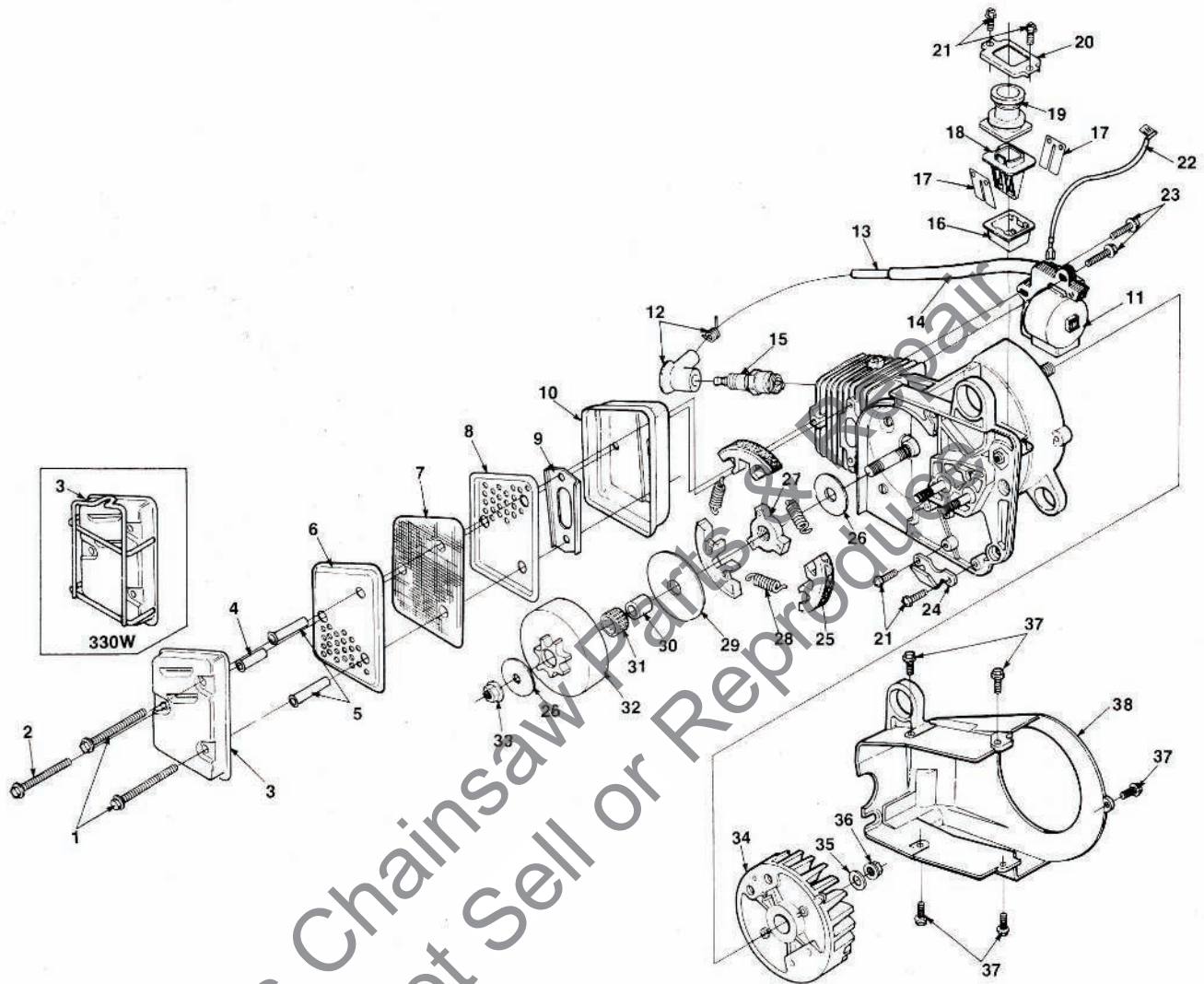
## FIGURE 2



No.	Description	Part No.	Qty.	No.	Description	Part No.	Qty.
1	NUT- Hex (5/16-18)	81196	2	20	HOUSING- Starter	A-94736	1
2	COVER- Drivecase Includes:	A-94685	1	21	SPRING- Rewind w/retainer	A-94918	1
3	NUT- Hex (10-32)	81206	1	22	PULLEY- Starter	94383	1
4	SCREW- Guide bar adjusting	65175-A	1	23	RATCHET- Starter	94384	1
5	PIN- Guide bar adjusting	65112-1	1	24	LEVER- Ratchet	94505	1
6	SCREW- Cap socket hd. (10-24 x 1 3/4)	82377	2	25	WASHER	95208	1
7	WASHER- Vibration isolator	70440-A	2	26	SCREW- Thd. forming (#10 x 1 1/4)	82392	1
8	RING- Vibration isolator	70432-A	6	27	TUBING- Rubber 7 1/2"	93112-30	1
9	ISOLATOR- Vibration	95868	1	28	VALVE- Check	69451	1
10	SPACER	70433	3	29	CAP- Fuel	A-94671	1
11	PLATE- Guide bar (outer)	95453	1		Includes:		
12	PLATE- Guide bar (inner)	95452	1	30	GASKET- Filler cap	94390	1
13	ISOLATOR- Vibration	95915	2	31	FILTER- Fuel tank valve	69443	1
14	WASHER- Flat (#8)	84025	1	32	SEAL- Foam	95206	1
15	GRIP- Starter Includes:	A-69962-B	1	33	FILTER- Fuel	A-59251	1
16	INSERT- Rope	70018-A	1		Includes:		
17	SCREW (8-32 x 1/2)	80983	4	34	ELEMENT- Felt filter	59253-1	1
18	ROPE- Starter Includes:	A-93876	1	35	TANK- Fuel	94339-1	1
19	WASHER- Nylon	93862	1	36	HOUSING- Engine (Bottom)	93830-2	1
				37	BRACE- Handle	94763	1
				38	SCREW- Sems hex hd. (10-24 x 3/4)	88051	3

# 330 CHAIN SAW

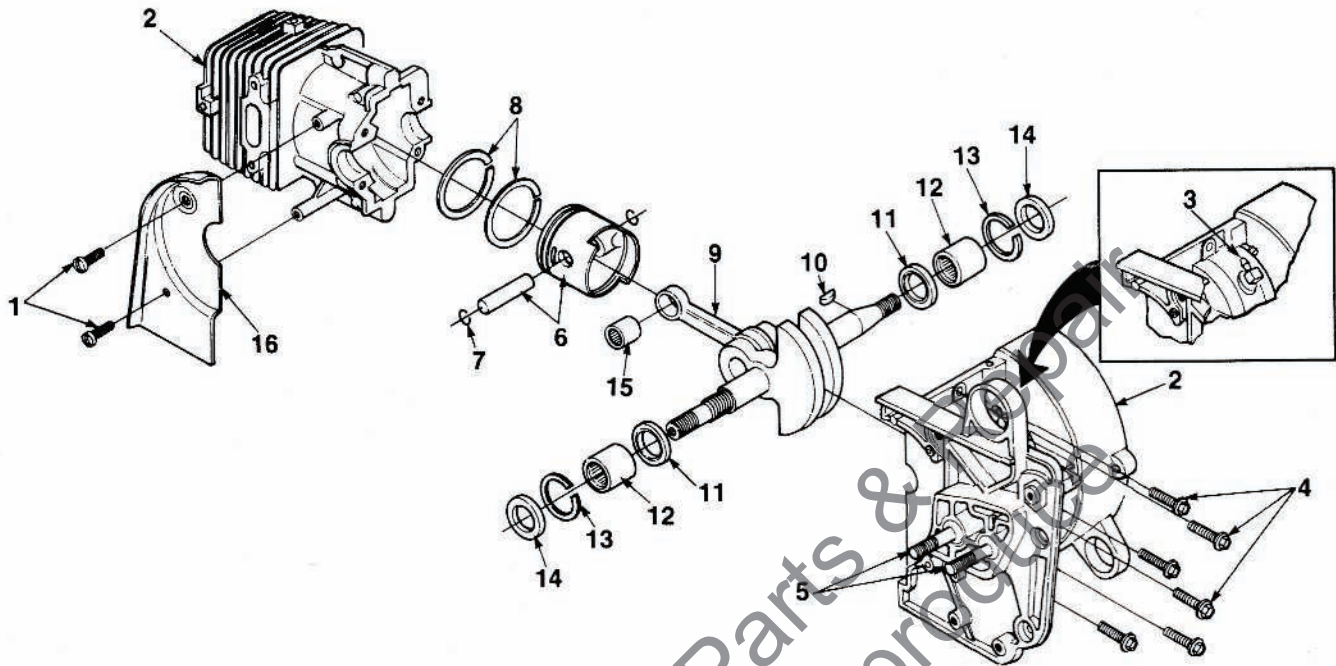
## FIGURE 3



No.	Description	Part No.	Qty.	No.	Description	Part No.	Qty.
1	SCREW- Hex hd. (10-24 x 2 1/4)	88058	2	19	BOOT- Connector	93838	1
2	SCREW- Hex sems (10-24 x 2)	88057	1	20	RETAINER- Boot	93847	1
3	CAP- Muffler	93856-1	1	21	SCREW- (8-32 x 1/2)	80983	4
	CAP- Muffler (330W)	A-96069-1	1	22	LEAD- Electrical	A-94668	1
4	SPACER- Muffler	93983-02	1	23	SCREW- (10-24 x .875)	88052	2
5	SPACER- Muffler	93983-04	2	24	STOP- Chain	70705	1
6	BAFFLE- Muffler (outer)	93855	1	25	SHOE- Clutch	A-93632	3
7	SCREEN- Spark arrestor	93504	1	26	WASHER- Thrust	65064	2
8	BAFFLE- Muffler (inner)	93515	1	27	SPIDER- Clutch	94374	1
9	PLATE- Reinforcing	94501	1	28	SPRING- Clutch	93814-A	3
10	BODY- Muffler	93857-1	1	29	WASHER- Thrust	93643	1
11	MODULE- Ignition	A-94361	1	30	RACE- Inner	65746-B	1
	Includes:			31	BEARING- Roller	64124	1
12	TERMINAL- High tension	A-94754	1	32	SPROCKET & DRUM- 3/8" pitch 7T	A-94304	1
13	LEAD- High tension	94362	1	33	NUT- Hex (3/8-24)	81236	1
14	SLEEVE- Insulating	95098	1	34	ROTOR	93844	1
15	SPARK PLUG	65130-S	1	35	WASHER- Flat	95479	1
16	RETAINER- Reed valve	93836-A	1	36	NUT- Lock (rotor nut)	81255	1
17	VALVE- Reed	93834	1	37	SCREW- Hex sems (10-24 x .625)	88050	5
18	SEAT- Reed stop	93835	1	38	SHROUD- Air	94341-2	1

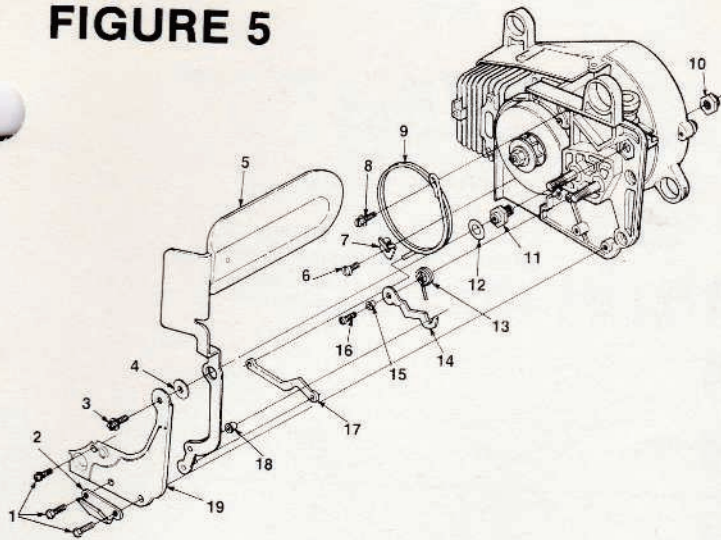
# 330 CHAIN SAW

## FIGURE 4



No.	Description	Part No.	Qty.	No.	Description	Part No.	Qty.
1	SCREW- Thruss washer (10-24 x 1/2)	88049	2	8	RING- Piston	93823	2
2	CRANKCASE & CYLINDER	A-95884	1	9	CRANKSHAFT & ROD	A-93821	1
	Includes:			10	KEY- Woodruff	75078	1
3	FITTING- Tube	70204	1	11	WASHER- Thrust	93825	2
4	SCREW (10-24 x 1)	88053	6	12	BEARING- Needle	93846	2
5	BOLT- Guide bar	93859	2	13	RING- Retaining	93819	2
	FITTING- Tube (L) (See Fig. #1-#52)	94392	1	14	SEAL- Crankshaft	93858	2
	FITTING- Tube (See Fig. #1 - #51)	94619	1	15	BEARING- Rod	68512	1
6	PISTON	A-95882	1	16	SHIELD- Sawdust	93832	1
	Includes:						
7	RING- Retaining	64813	2				

**330 SL  
FIGURE 5**

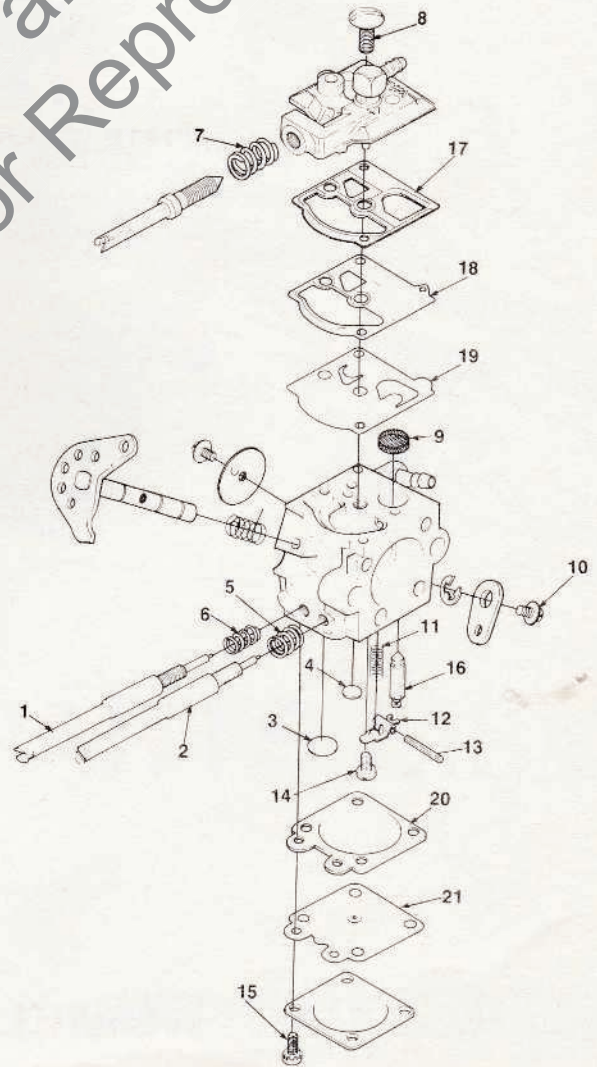


**CHAIN BRAKE  
AND  
CHAIN STOP**

1	SCREW- (8-32 x 1/2)	80983	3
2	STOP- Chain	70705	1
3	SCREW- (10-24 x 3/8)	88048	1
4	WASHER- Flat	70632	1
5	GUARD- Hand	A-95409	1
6	SCREW- Pan hd.	80672	1
7	BRACKET	95411	1
8	SCREW (12-24 x 1/2)	80821	1
9	BAND- Brake	95283	1
10	NUT- Hex (3/8-24)	81192	1
11	INSERT- Chain brake	95376	1
12	WASHER- Spring	95410	1
13	SPRING- Torsion	95284	1
14	DETENT- Brake lever	95287	1
15	SPACER- Flanged	95295	1
16	SCREW- Mach. pan hd. (8-32 x 1/2)	82254	1
17	LINK- Chain brake	95286	1
18	BUSHING	95494	1
19	SHIELD- Chain brake	95394	1

**CARBURETOR  
A-94380  
WT-1**

- 96443 REPAIR KIT (1-21)
- 96444 GASKET/DIAPHRAGM KIT (17-21)
- 64229 NEEDLE (16)



ALWAYS FURNISH MODEL AND SERIAL NUMBER WHEN ORDERING PARTS.

## ACCESSORIES & TOOLS

17193	GREASE- Multi-Use	A-24060	SPANNER WRENCH- Clutch removal
A-12272-C	KIT- Bumper plate	A-24284	WRENCH- Combination
	Includes:	24306	SHIM- Black plastic (.012") rotor air gap
88048	SCREW- (10-24 x 3/4) (2)	A-24544	PULLER- Rotor removal
23475	LACQUER- Touch up (red)	24823	SEALANT
23488-B	LOCTITE	68848	CORD- Starter (250 ft. reel)
23756	PLUG- Bearing installation	A-70790-A	SAFE•T•TIP (standard with unit)
A-23949	PLUG- Piston pin removal	93112-99	TUBING- Rubber (10ft.)
	Includes::	93157-99	TUBING- Rubber (10ft.)
67900	"O" Ring (1)		

---

### HOMELITE DIVISION OF TEXTRON INC.

P. O. BOX 7047  
14401 CAROWINDS BOULEVARD  
CHARLOTTE, N.C. 28217

Leon's Chain Saw Parts & Repair  
Do Not Sell or Reproduce

00821YZ

## HOMELITE **TEXTRON**

Homelite Division of Textron Inc.