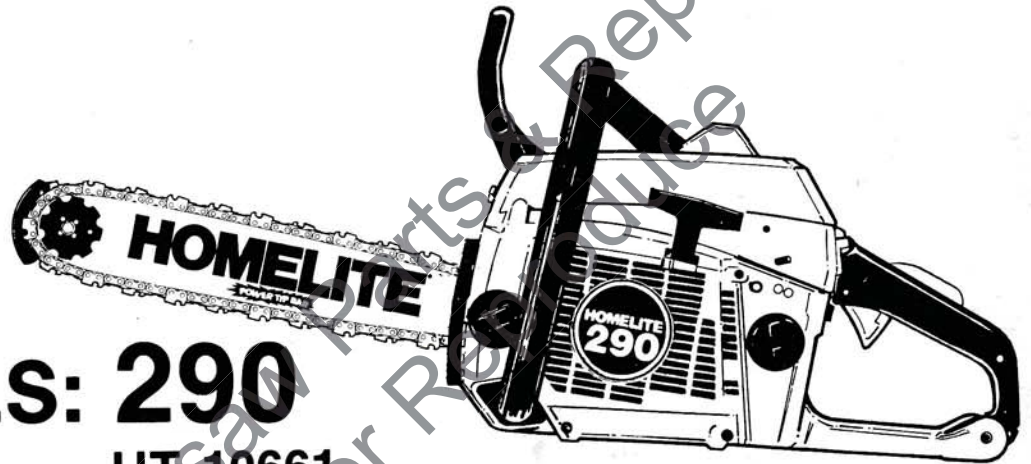


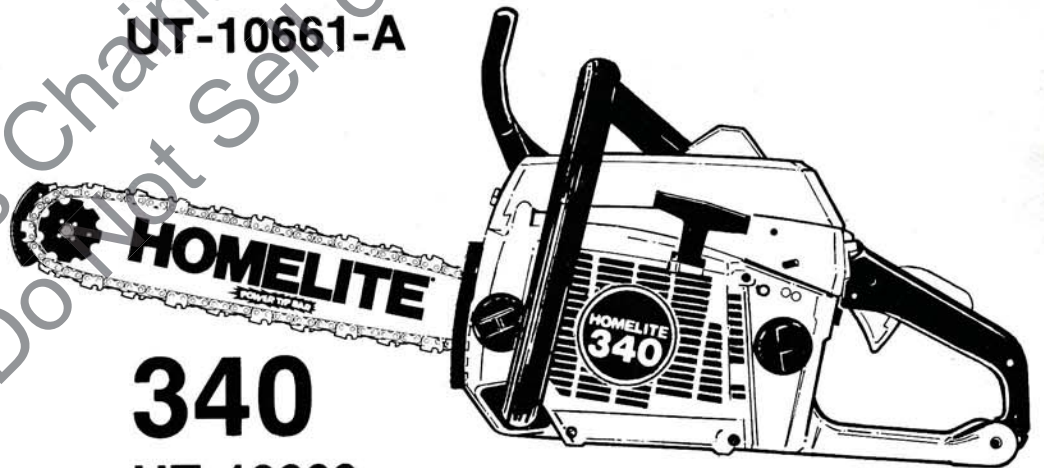
PART NO. 17867
REVISION 1
Printed in U.S.A.

HOMELITE[®]
JACOBSEN

PARTS LIST



MODELS: 290
UT-10661
UT-10661-A



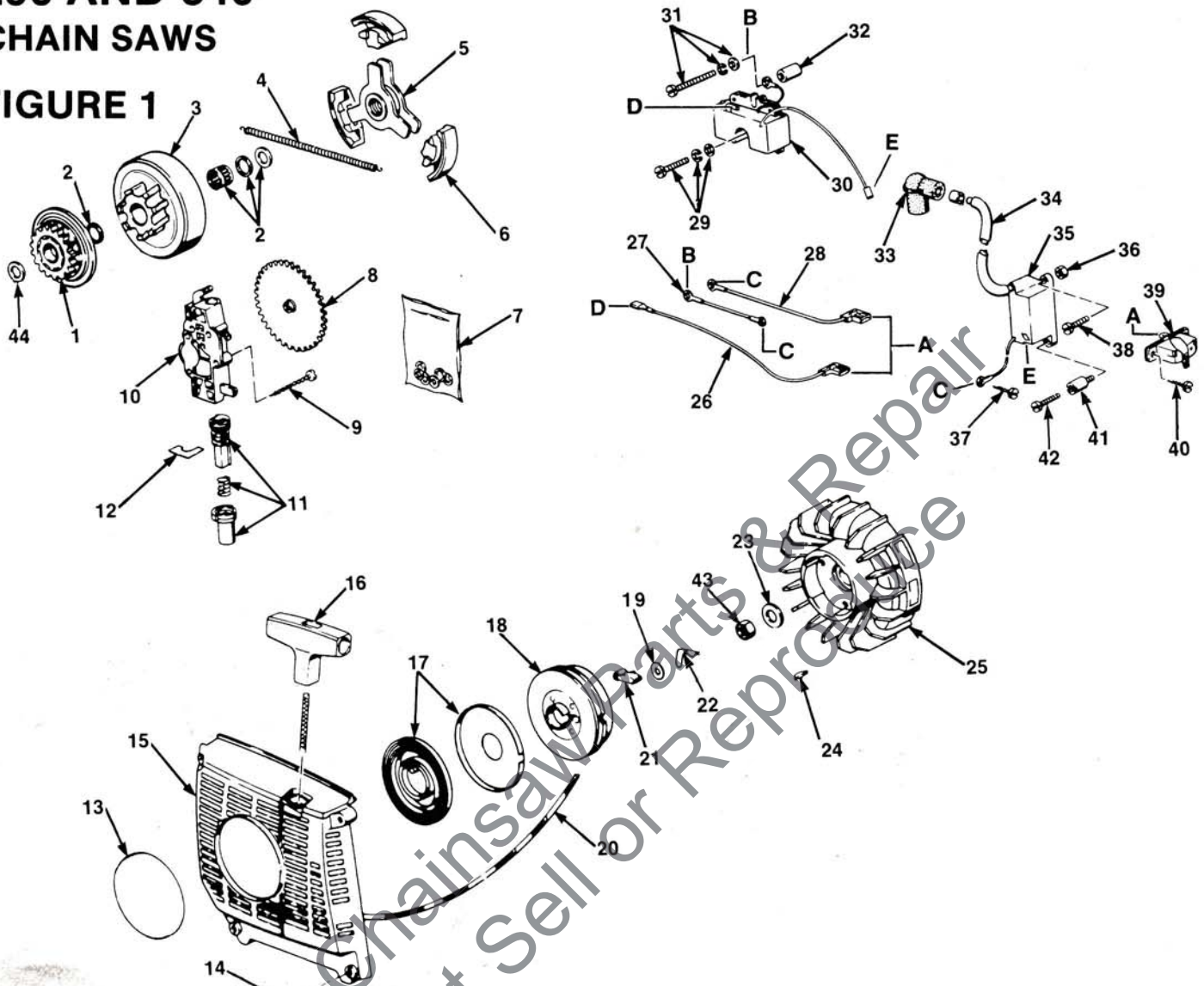
340
UT-10660
UT-10660-A

HOMELITE **TEXTRON**

Homelite Division of Textron Inc.

290 AND 340 CHAIN SAWS

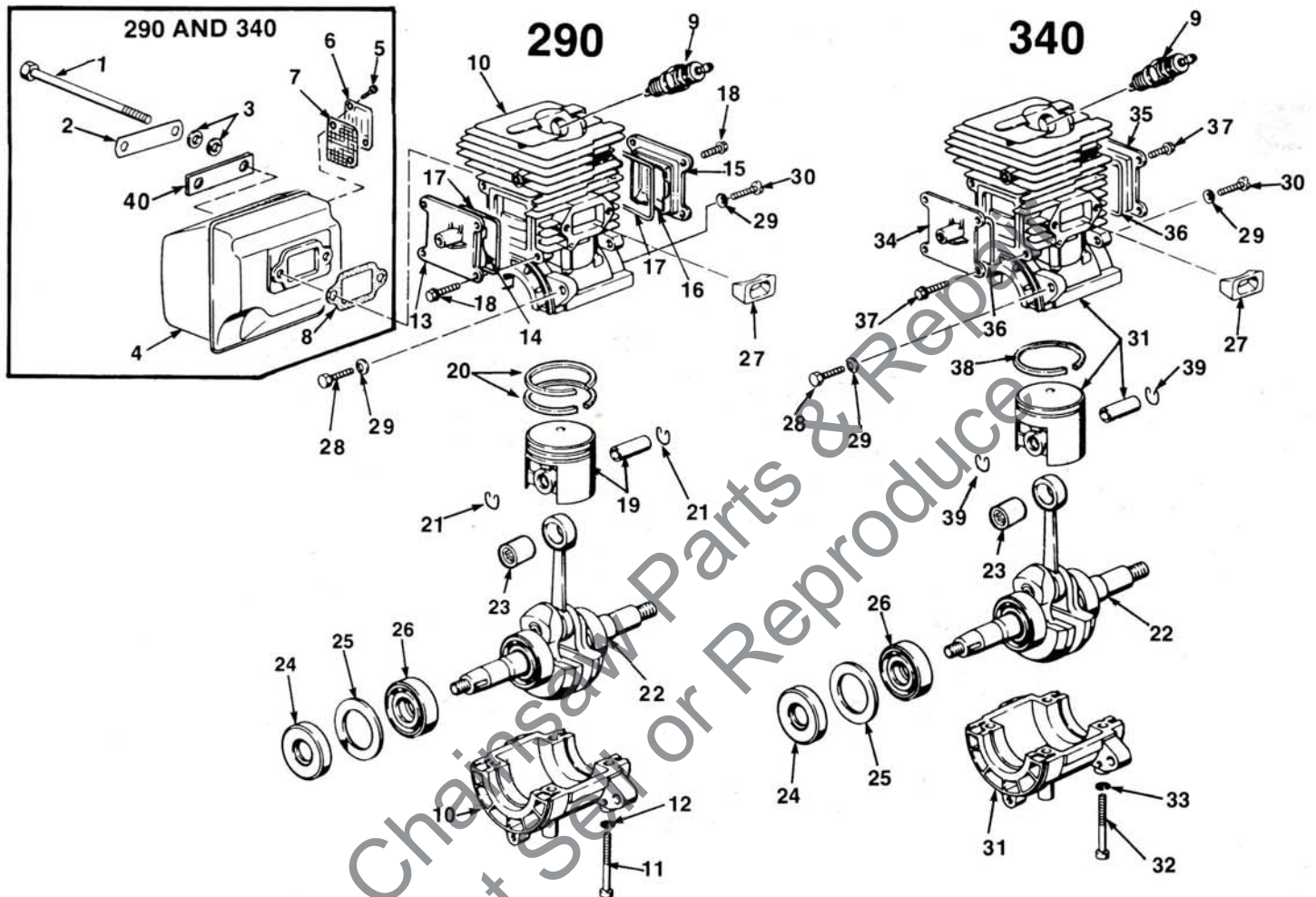
FIGURE 1



NO.	DESCRIPTION	PART NO.	290	340	Qty.	NO.	DESCRIPTION	PART NO.	290	340	Qty.
1	ACTIVATOR- 3/8 P., 7T	98474	x	x	1	22	CLIP- Retaining	98334	x	x	1
	ACTIVATOR- (opt.) .325, 8T	98280	x	x	1	23	WASHER- Flat	83207	x	x	1
2	NEEDLE BEARING KIT	A-98482	x	x	1	24	KEY- Woodruff	98318	x	x	1
3	SPROCKET & DRUM, 3/8 P., 7 T.	A-98473	x	x	1	25	ROTOR	A-98310	x	x	1
	SPROCKET & DRUM, .325 P., 8 T. (opt.)	A-98281	x	x	1	26	WIRE- Ground	A-98373	x	x	1
4	SPRING- Clutch	98453	x	x	1	27	CABLE- Insulated	A-98372	x	x	1
5	SPIDER- Clutch	A-98289	x	x	1	28	CABLE- Insulated	A-98374	x	x	1
6	SHOE- Clutch	98292	x	x	3	29	SCREW- F.H. (5 x 20)	88145	x	x	1
7	KIT- Pump repair	A-98484	x	x	1	30	MODULE & CORE	98365	x	x	1
8	GEAR & HUB ASSEMBLY	A-98263	x	x	1	31	SCREW- F.H. (5 x 30)	88144	x	x	1
9	SCREW- (4.2 x 32)	88138	x	x	3	32	SPACER	98367	x	x	1
10	OIL PUMP ASSEMBLY	A-98244	x	x	1	33	TERMINAL- Spark plug	A-98369	x	x	1
11	REGULATOR REPAIR KIT	A-98483	x	x	1	34	TUBING- Silicon 3 1/2"	98376	x	x	1
	Includes:					35	COIL- Ignition	98366	x	x	1
12	PLATE- Support	98266	x	x	1	36	NUT	81403	x	x	1
13	DECAL- Starter (290)	98187	x		1	37	SCREW (3.9 x 13)	98375	x	x	1
	DECAL- Starter (340)	98183		x	1	38	SCREW- F.H. (4 x 14)	88146	x	x	1
14	SCREW (5 x 20)	88142	x	x	4	39	SWITCH (on/off)	98377	x	x	1
15	HOUSING- Starter	98321	x	x	1	40	SCREW (3.5 x 13)	88148	x	x	1
16	GRIP- Starter	98331	x	x	1	41	STUD	98368	x	x	1
17	SPRING & CONTAINER	A-98326	x	x	1	42	SCREW (F.H. 4 x 18)	88147	x	x	1
18	PULLEY- Starter	98329	x	x	1	43	NUT- Hex	81402	x	x	1
19	WASHER	98423	x	x	1	44	WASHER	98475	x	x	1
20	STARTER PAWL & ROPE KIT	A-98485	x	x	1						
	Includes:										
21	STARTER PAWL	98332	x	x	1						

290 AND 340 CHAIN SAWS

FIGURE 2

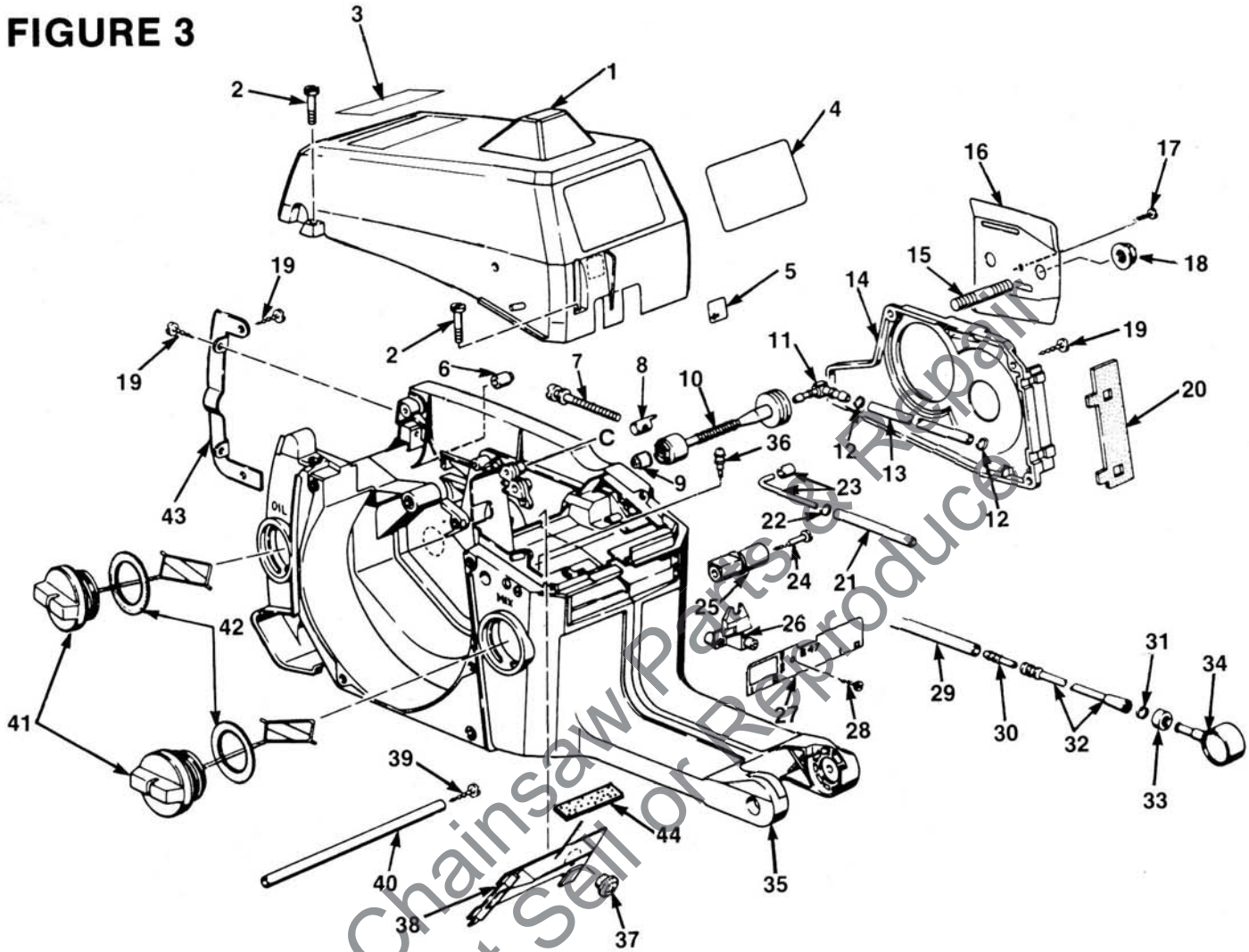


NO.	DESCRIPTION	PART NO.	290	340	Qty.	NO.	DESCRIPTION	PART NO.	290	340	Qty.
1	SCREW- (M6 x 90)	88137	x	x	2	22	CRANKSHAFT ASSEMBLY	A-98189	x	x	1
2	PLATE- Locking	98242	x	x	1	23	BEARING- Needle roller	98194	x	x	1
3	WASHER- Belleville	98446	x	x	4	24	SEAL- Main	98197	x	x	2
4	MUFFLER ASSEMBLY	A-98233	x	x	1	25	RETAINER- Bearing	98195	x	x	2
	Includes:					26	BEARING- Ball	98196	x	x	2
5	SCREW	88156	x	x	2	27	INSERT-INTAKE PORT	98216	x	x	1
6	COVER- Muffler	98500	x	x	1	28	SCREW- (M5 x 23)	88136	x	x	4
7	SPARK ARRESTOR	98499	x	x	1	29	WASHER- Flat (M5)	83203	x	x	7
8	MUFFLER GASKET	98241	x	x	1	30	SCREW- (M5 x 18)	88135	x	x	3
9	SPARK PLUG (Champion CJ6Y) SPARK PLUG (Champion RCJ6Y) (resistor type)	93561-S 98217	x x	x x	1 1	31	CRANKCASE & CYLINDER W/Piston Assembly (Matched)	A-98510	x		1
10	CRANKCASE & CYLINDER	A-98444	x		1		Includes:				
	Includes:					32	SCREW	88133	x		4
11	SCREW- M5 x 45	88133	x		4	33	WASHER- Lock	83200	x		4
12	WASHER- Lock	83200	x		4	34	TRANSFER PORT COVER ASSEMBLY	A-98211	x		1
13	COVER- Transfer port	98212-1	x		1	35	TRANSFER PORT COVER ASSEMBLY	A-98207	x		1
14	INSERT- Transfer port	98470	x		1	36	"O" RING	98215	x		2
15	COVER- Transfer port	98208	x		1	37	SCREW (M4 x 12)	88134	x		8
16	INSERT- Transfer port	98469	x		1	38	PISTON RING	98206	x		1
17	"O" RING	98215	x		2	39	RING- Piston pin retaining	98198	x		2
18	SCREW- M4 x 12	88134	x		8	40	PLATE-Support	98616	x		1
19	PISTON & PIN ASSEMBLY	A-98511	x		1						
	Includes:										
20	PISTON RING	98439	x		2						
21	RING- Piston pin retaining	98198	x		2						

ALWAYS FURNISH MODEL AND SERIAL NUMBER WHEN ORDERING PARTS.

290 AND 340 CHAIN SAWS

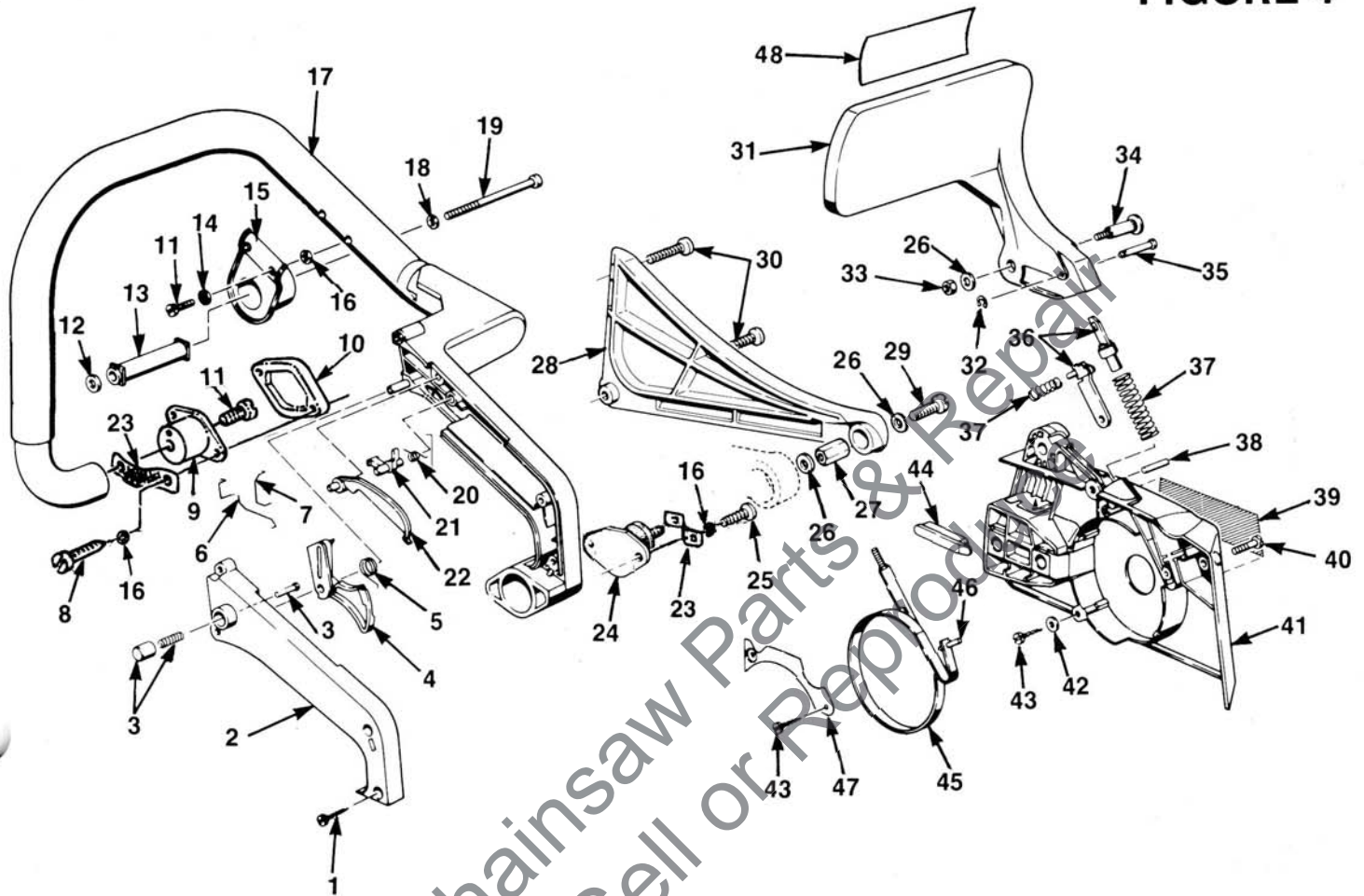
FIGURE 3



NO.	DESCRIPTION	PART NO.	290	340	Qty.	NO.	DESCRIPTION	PART NO.	290	340	Qty.
1	COVER- Cylinder	98403	x	x	1	24	SCREW (4.2 x 32)	88157	x	x	1
2	SCREW	88142	x	x	3	25	CHAIN STOP	98277	x	x	1
3	DECAL- Safety instruction	96990	x	x	1	26	SUPPORT- Choke lever	98386	x	x	1
4	DECAL (290)	98186	x		1	27	PLATE- Switch	98467-1	x	x	1
	DECAL (340)	98184		x	1	28	SCREW (2.9 x 9.5)	88149	x	x	1
5	DECAL- Choke	98338	x	x	1	29	TUBING- Rubber (1 1/4")	98232-02	x	x	1
6	VALVE- Check	A-98279	x	x	1	30	FITTING- Hose	98354	x	x	1
7	SCREW- Guide bar adjusting	88140	x	x	1	31	CLAMP- Wire	98356	x	x	1
8	PIN- Guide bar adjusting	98452	x	x	1	32	LINE- Fuel pick-up	98353	x	x	1
9	STRAINER- Oil	A-98272	x	x	1	33	WEIGHT- Fuel pick-up	98360	x	x	1
10	TUBE- Oil	98271	x	x	1	34	FUEL FILTER ASSEMBLY	A-98357	x	x	1
11	FITTING- Elbow	98270	x	x	1	35	ENGINE HOUSING	A-98218	x	x	1
12	CLAMP- Wire	98269	x	x	2		Includes:				
13	TUBING- Rubber (oil line) 3"	98232-03	x	x	1	36	FITTING- Tube	98227	x	x	1
14	COVER- Oil pump	98275	x	x	1	37	PLUG- Baffle	98392	x	x	1
15	STUD- Guide bar	98229	x	x	2	38	BAFFLE- Cylinder	98390	x	x	1
16	PLATE- Guide bar	98278	x	x	1	39	SCREW (3 1/2 x 19)	88150	x	x	1
17	SCREW- (3.5 x 6.5)	80513	x	x	1	40	TUBING- Rubber (vent) 8"	98232-05	x	x	1
18	NUT- W/washer	81401	x	x	2	41	CAP- Oil & Fuel w/retainer	A-98393	x	x	2
19	SCREW- (4 x 13)	98460	x	x	9		Includes:				
20	PROTECTOR- Engine housing	98276	x	x	1	42	GASKET- Oil & Fuel	98395	x	x	2
21	TUBING- Rubber (oil line) 7 1/2"	98232-04	x	x	1	43	PLATE- Bumper	98294	x	x	1
22	CLAMP- Wire	98268	x	x	1	44	STRIP- Felt	98391	x	x	1
23	OIL TUBE KIT	A-98478	x	x	1						

290 AND 340 CHAIN SAWS

FIGURE 4

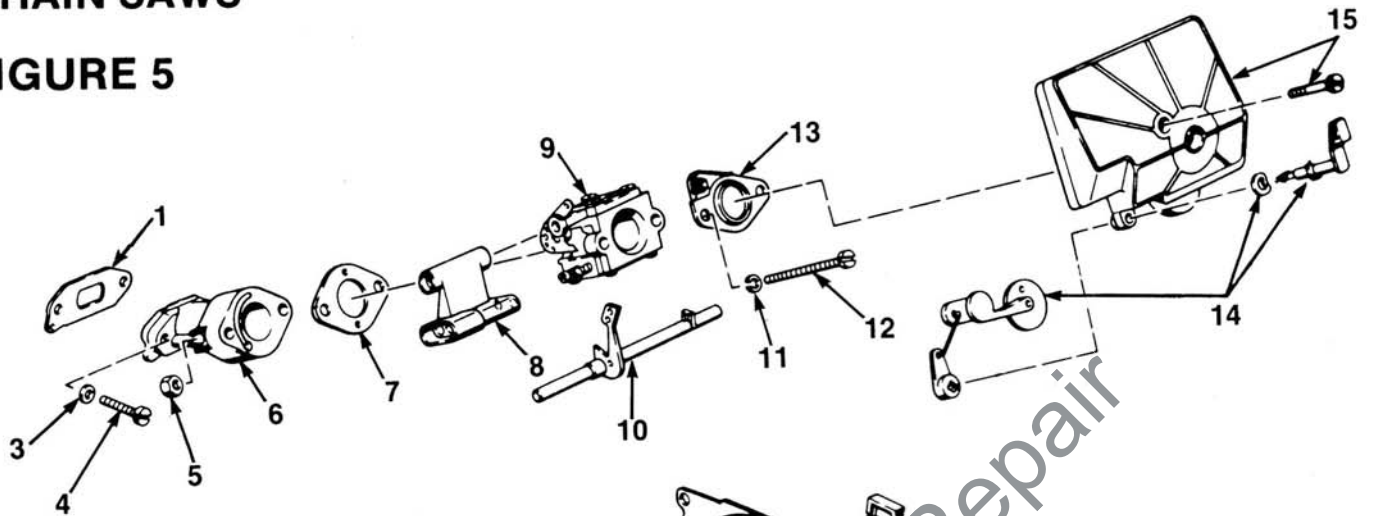


NO.	DESCRIPTION	PART NO.	Qty.		NO.	DESCRIPTION	PART NO.	Qty.	
			290	340				290	340
1	SCREW- (3 1/2 x 19)	88150	x	x	25	SCREW (4.2 x 16)	88139	x	x
2	COVER- Throttle handle	98417	x	x	26	WASHER- Lock	83203	x	x
3	KIT- Throttle lock	A-98479	x	x	27	NUT	81409	x	x
4	TRIGGER- Throttle	98412	x	x	28	HAND GUARD (rear)	98431	x	x
5	SPRING- Throttle	98413	x	x	29	BOLT (M5 x 10)	88154	x	x
6	LINK- Throttle	98363	x	x	30	SCREW (4 x 20)	98433	x	x
7	LINK- Throttle	98364	x	x	31	HAND GUARD	98306	x	x
8	SCREW- (4.22 x 22)	88153	x	x	32	RING- Retaining	83204	x	x
9	ISOLATOR	A-98420	x	x	33	NUT	98457	x	x
10	ISOLATOR SAFETY SPACER	98429	x	x	34	SCREW- Shoulder	98461	x	x
11	SCREW- (M5 x 12)	88151	x	x	35	PIN	98422	x	x
12	WASHER- Flat	83210	x	x	36	ADJUSTMENT SET	A-98481	x	x
13	SPACER- Isolator	98430	x	x	37	SPRING SET	A-98480	x	x
14	WASHER- Lock	83208	x	x	38	PIN	98456	x	x
15	HANDLE BAR ISOLATOR	A-98426	x	x	39	DECAL- Homelite	98185	x	x
16	WASHER	83212	x	x	40	SCREW- (5 x 20)	88142	x	x
17	HANDLE BAR ASSEMBLY	A-98404	x	x	41	DRIVE CASE COVER ASSEMBLY	A-98296	x	x
18	WASHER- Lock	98432	x	x	42	WASHER	83205	x	x
19	SCREW- (M6 x 65)	88152	x	x	43	SCREW (3.5 x 13)	88148	x	x
20	SPRING- Torsion	98415	x	x	44	GUIDE- Chain	98309	x	x
21	LEVER- Throttle lock	98414	x	x	45	BRAKE BAND ASSEMBLY	A-98298	x	x
22	LOCK- Throttle	98416	x	x		Includes:			
23	STRAP- Isolator	98400	x	x	46	PIN- Dowel	98447	x	x
24	ISOLATOR	98398	x	x	47	COVER- Plate	98307	x	x
					48	DECAL	98653	x	x

ALWAYS FURNISH MODEL AND SERIAL NUMBERR WHEN ORDERING PARTS.

290 AND 340 CHAIN SAWS

FIGURE 5



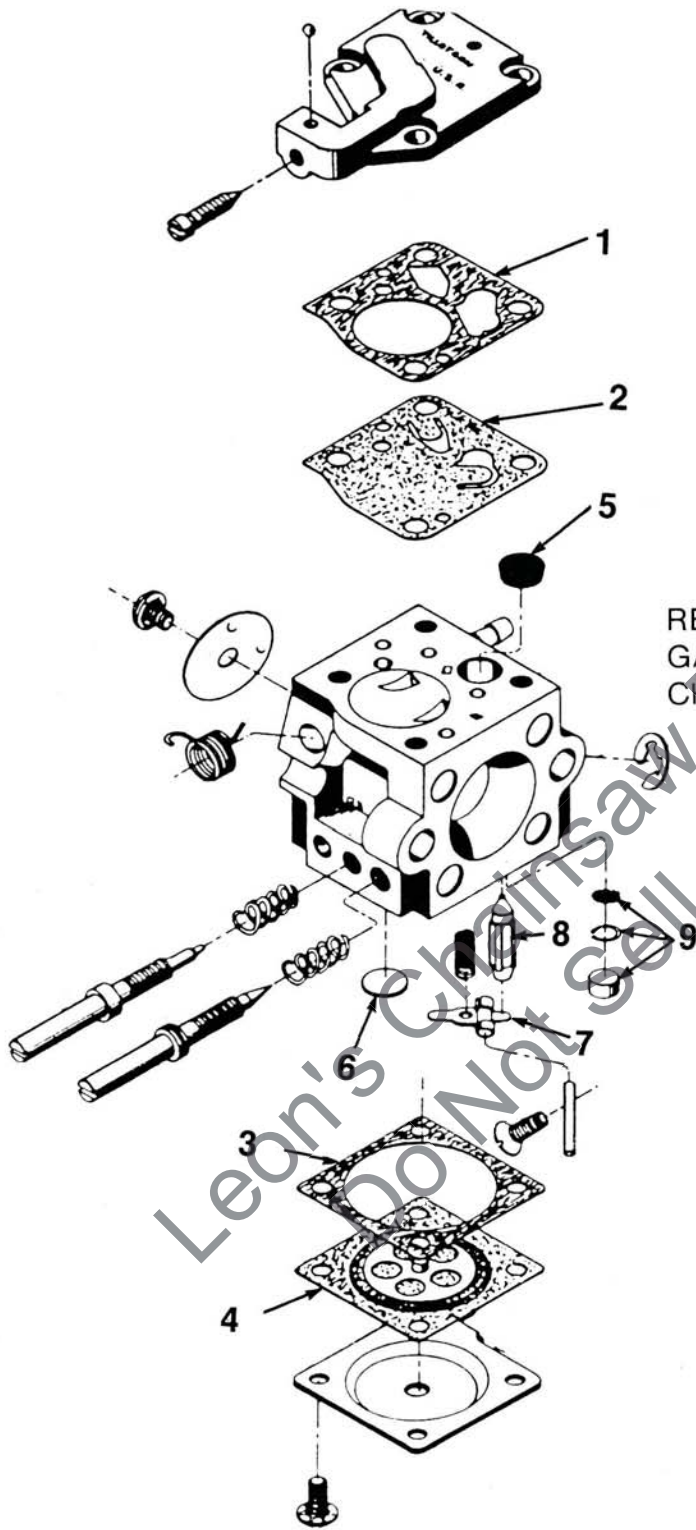
NO.	DESCRIPTION	PART NO.	290	340	Qty.
1	GASKET- Intake manifold	98335	x	x	1
2	GUIDE- Air	98319	x	x	1
3	WASHER- Spring	83203	x	x	2
4	SCREW (M5 x 20)	98459	x	x	2
5	NUT (M5)	81405	x	x	2
6	MANIFOLD- Intake	98337-1	x	x	1
7	GASKET- Carburetor	98339	x	x	1
8	GUIDE- Carburetor screw	98361	x	x	1
9	CARBURETOR (HU63A) (Till.)	A-98340	x	x	1
10	SHAFT- Throttle	98362	x	x	1
11	WASHER- Spring	83208	x	x	2
12	SCREW- (M5 x 45)	88143	x	x	2
13	PLATE- Filter mounting	98351	x	x	1
14	KIT- Choke lever	A-98486	x	x	1
15	AIR FILTER ASSEMBLY	A-98487	x	x	1
	Includes				
	SLEEVE	98508-01	x	x	2

ACCESSORIES & TOOLS

BUMPER SPIKE	98293
ROTOR REMOVAL TOOL	98488
FLYWHEEL HOLDER TOOL	98489
COMBINATION WRENCH	98437
SILICONE SEALANT	24823
IGNITION TEST SPARK PLUG	JA-31316-4
CARBURETOR REPAIR TOOL KIT	17789
MULTI-PURPOSE GREASE	17193

290 AND 340 CHAIN SAWS

FIGURE 6



CARBURETOR (HU63A) A-98340

- | | |
|------------------------------------|---------|
| REPAIR KIT (Incl. 1 - 8) | A-98494 |
| GASKET/DIAPHRAGM KIT (Incl. 1 - 4) | A-98493 |
| CHECK VALVE KIT (#9) | 98492 |

Homelite Division of Textron Inc.
P.O. box 7047
14401 Carowinds Boulevard
Charlotte N.C. 28217 U.S.A.

OVERSEAS OFFICES

HOMELITE DIVISION OF TEXTRON INC.
Korenaarstraat 1
2153 BM Nieuw Vennepe
The Netherlands

HOMELITE DIVISION OF TEXTRON INC.
Pacific Limited
P.O. BOX 209
Blackburn, 3130
Victoria, Australia

HOMELITE **TEXTRON**

Homelite Division of Textron Inc.