

HOMELITE®

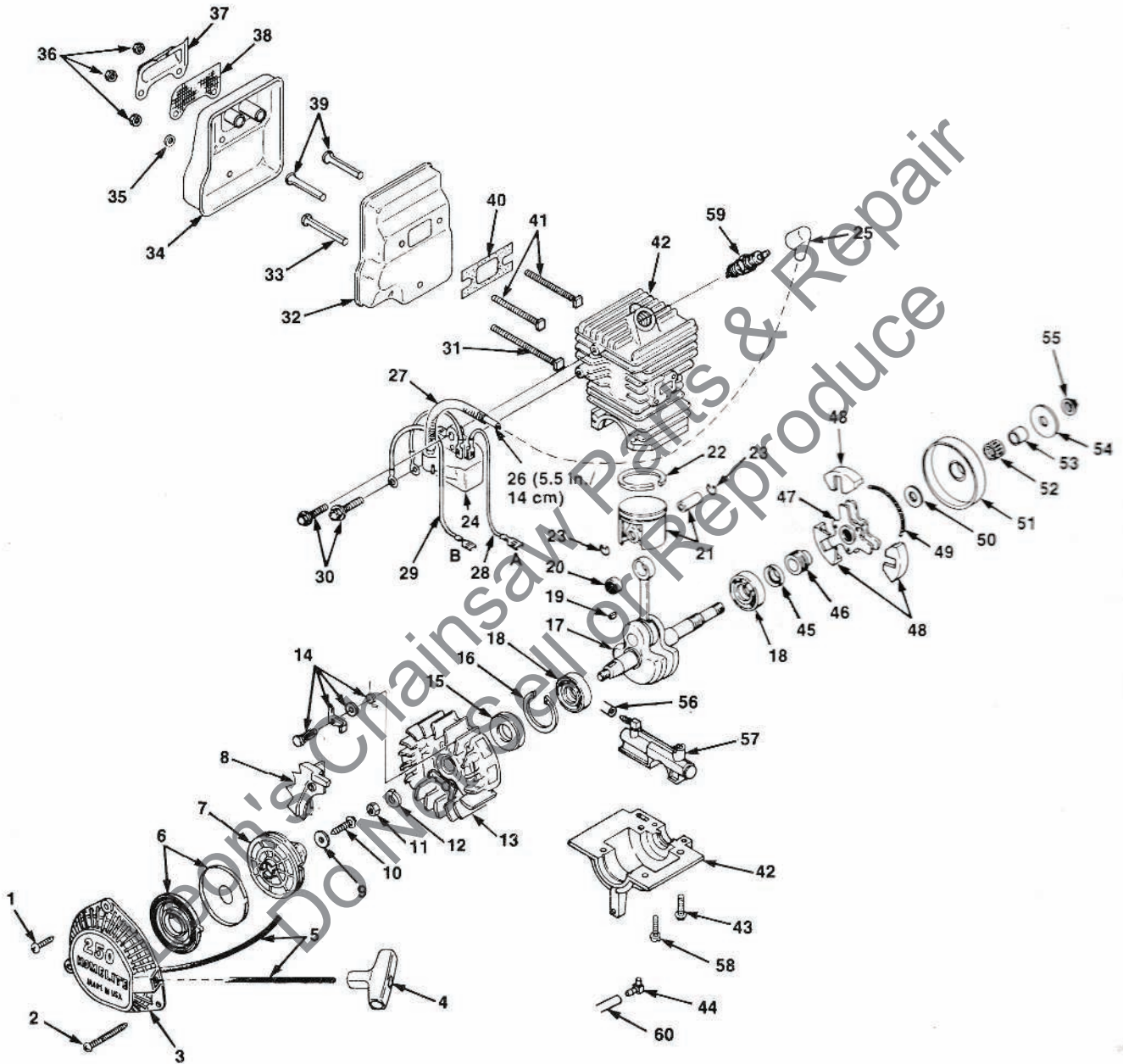
- ⓐ PARTS LIST
- ⓑ LISTE DE PIÈCES
- ⓒ TEILELISTE
- ⓓ LISTA DE PIEZAS
- ⓔ ELENCO DELLE PARTI

250 CHAIN SAW
SCIE A CHAÎNE 250
MOTORSÄGE 250
MOTOSIERRA 250
MOTOSEGA 250



ⓐ Printed in U.S.A.
ⓑ Imprimé aux E.U.
ⓒ Gedruckt in U.S.A.
ⓓ Impreso in E.E.U.U.
ⓔ Stampato negli Stati Uniti
P/N 18456
Revision 1

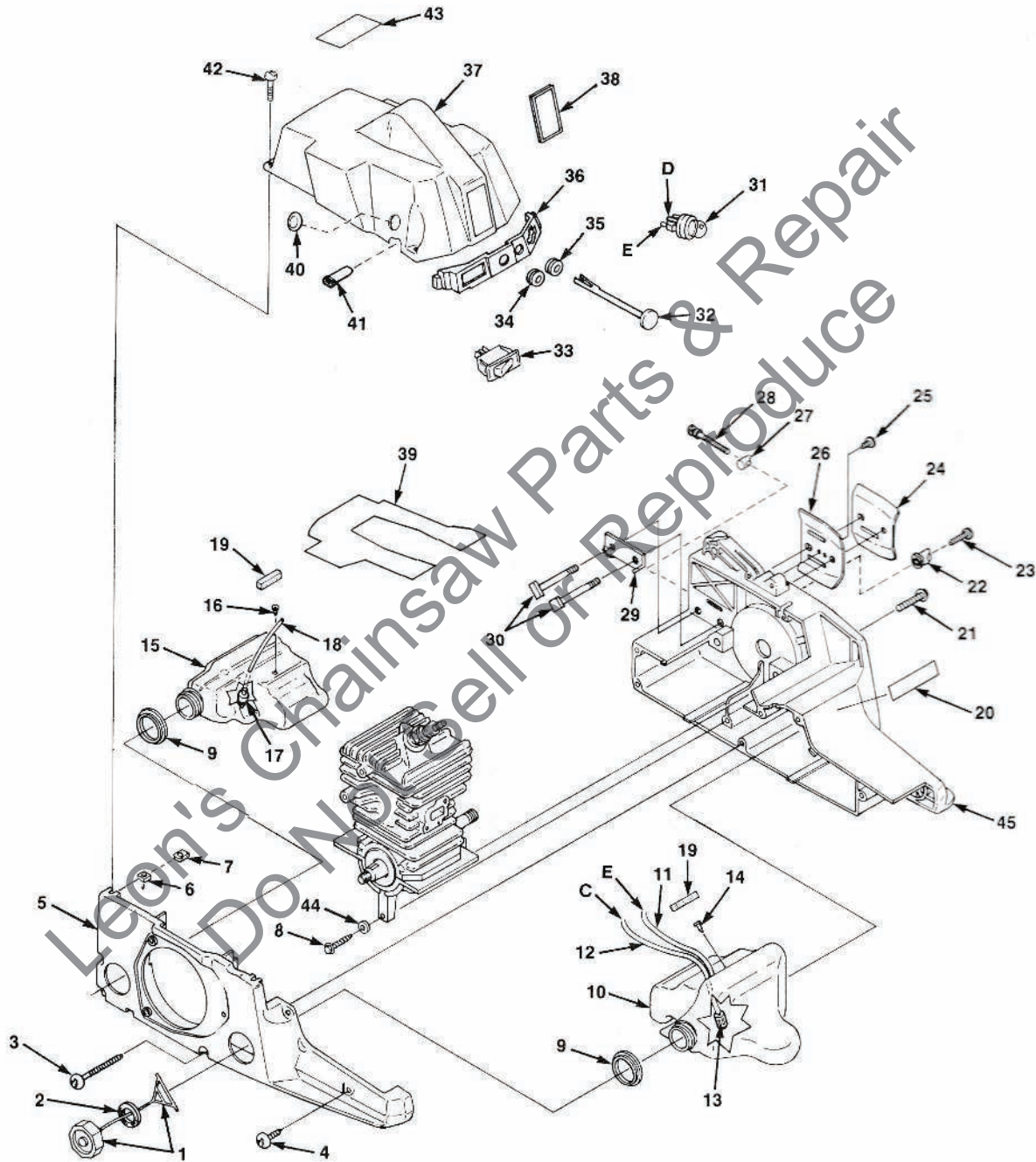
FIGURE 1
FIGURE 1
ABBILDUNG 1
FIGURA 1
FIGURA 1



| No. No. Nr. No. N° | Part No. No. de pièce Best.—Nr. No. de. Pieza Pezzo N° | Description | Qty. Qté. Menge Cant. Qtà. |
|--------------------------------|--------------------------------------------------------------------|------------------------------------|----------------------------------------|
| 1 | 82546 | SCREW- (8-16 x 5/8") | 2 |
| 2 | 82544 | SCREW- (8-16 x 2") | 1 |
| 3 | A-02580-A | STARTER HOUSING w/Decal | 1 |
| 4 | 02264 | GRIP- Starter | 1 |
| 5 | 97899 | ROPE | 1 |
| 6 | A-97908 | SPRING & CONTAINER | 1 |
| 7 | 97768-A | PULLEY | 1 |
| 8 | 00207-1A | HOUSING- Starter side | 1 |
| 9 | 94062 | WASHER- Retainer | 1 |
| 10 | 93417 | SCREW- Thd. forming (10-24 x 5/8") | 1 |
| 11 | 81124-A | NUT- Jam | 1 |
| 12 | 83102 | WASHER- Lock (3/8") | 1 |
| 13 | ●A-00994-B | ROTOR & STARTER PAWL ASSY. | 1 |
| 14 | ●A-02774 | STARTER PAWL | 1 |
| 15 | 98197 | SEAL- Shaft | 1 |
| 16 | 28922-1 | RING- Retaining | 1 |
| 17 | ●A-02578 | CRANKSHAFT | 1 |
| 18 | ● 98797 | BEARING- Ball | 2 |
| 19 | 75078 | KEY- Woodruff | 1 |
| 20 | 68512 | BEARING- Roller | 1 |
| 21 | ●A-02579 | PISTON & PIN | 1 |
| 22 | ● 01545 | RING- Piston | 1 |
| 23 | ● 64813 | RING- Retainer | 2 |
| 24 | ●A-01546 | MODULE- Ignition | 1 |
| 25 | ●A-02597 | BOOT- Spark plug | 1 |
| 26 | ● 69326 | LEAD- Hi Tension | 1 |
| 27 | ● 95098 | INSULATOR- Lead | 1 |
| 28 | A-01822-A | WIRE- Ignition | 1 |
| 29 | A-01821-A | WIRE- Ground | 1 |
| 30 | 88052 | SCREW- (10-24 x 7/8") | 2 |
| 31 | 02176 | SCREW- Square hd. (10-32 x 2 1/2") | 1 |
| 32 | A-01538 | BODY- Muffler | 1 |
| 33 | 93983-11 | SPACER- Muffler | 1 |
| 34 | A-01539-A | COVER- Muffler | 1 |
| 35 | 84003 | WASHER- Flat #10 | 1 |
| 36 | 81206 | NUT- Hex 10-32 | 3 |
| 37 | 01531-A | COVER- Exhaust | 1 |
| 38 | 01532 | SCREEN- Spark arrestor | 1 |
| 39 | 93983-10 | SPACER- Muffler | 2 |
| 40 | 01543 | GASKET- Muffler | 1 |
| 41 | 02509 | SCREW- (10-32 x 2 1/4") | 2 |
| 42 | ●A-02577-A | CYLINDER & CRANKCASE | 1 |
| 43 | ● 80891 | SCREW-Hex hd. | 4 |
| 44 | 98109 | FITTING- Oil tube | 1 |
| 45 | 93858 | SEAL- Crankshaft | 1 |
| 46 | 00229 | WORM- Left hand | 1 |
| 47 | A-00769 | SPIDER- Clutch | 1 |
| 48 | 98292 | SHOE- Clutch | 3 |
| 49 | 98453 | SPRING- Clutch | 1 |
| 50 | 65027 | WASHER- Thrust | 1 |
| 51 | 00996-A | SPROCKET & DRUM | 1 |
| 52 | 64333 | BEARING- Needle | 1 |
| 53 | 69423 | RACE- Inner | 1 |
| 54 | 65064 | WASHER- Thrust | 1 |
| 55 | 81255 | NUT- Hex Lock 3/8-24 | 1 |
| 56 | 02548 | LINE- Oil | 1 |
| 57 | A-02802-A | PUMP- Oil | 1 |
| 58 | 82146 | SCREW | 2 |
| 59 | 93561-S | PLUG- Spark | 1 |
| 60 | 70310-27 | TUBING- Rubber | 1 |

- Assembly or part of an assembly.
- Ensemble ou partie d'un ensemble.
- Satz oder Teil eines Satzes.
- Complesso o parte di un complesso.
- Conjunto o parte de un conjunto.

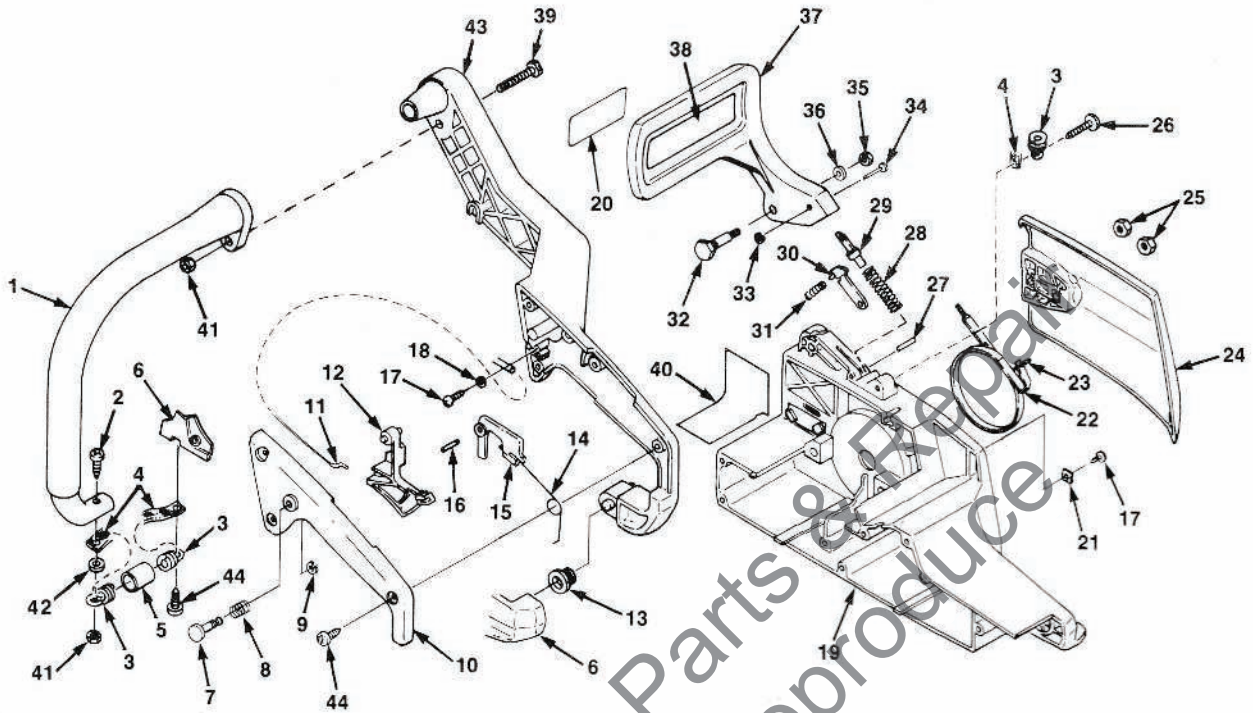
FIGURE 2
FIGURE 2
ABBILDUNG 2
FIGURA 2
FIGURA 2



| No. No. Nr. No. No. | Part No. No. de pièce Best.—Nr. No. de. Pieza Pezzo N° | Description | Qty. Qté. Menge Cant. Qtà. |
|---------------------------------|--------------------------------------------------------------------|----------------------------|----------------------------------------|
| 1 | ●A-00904 | CAP- Tank (w/retainer) | 2 |
| 2 | ● 02762 | GASKET | 2 |
| 3 | 82545 | SCREW | 3 |
| 4 | 82546 | SCREW- (8-16 x 5/8") | 2 |
| 5 | 00207-1A | HOUSING- Starter side | 1 |
| 6 | 70810 | NUT- Square (10-24) | 3 |
| 7 | 95337 | NUT- Retainer | 3 |
| 8 | 82558 | SCREW- Thd. forming | 1 |
| 9 | 00993 | SEAL- Tank | 2 |
| 10 | ●A-01811 | TANK- Fuel | 1 |
| 11 | ● 70310-21 | TUBING- Rubber (5 1/4") | 1 |
| 12 | ● 70310-36 | TUBING- Rubber (9") | 1 |
| 13 | ● 49422 | FILTER- Fuel | 1 |
| 14 | ● 69451 | VALVE- Check | 1 |
| 15 | ●A-01810-A | TANK- Oil | 1 |
| 16 | ● 69451 | VALVE- Check | 1 |
| 17 | ●A-68593 | FILTER- Oil | 1 |
| 18 | ● 70310-27 | TUBING- Rubber | 1 |
| 19 | 69443 | FILTER- Valve | 2 |
| 20 | 01805 | DECAL- Instruction | 1 |
| 21 | 80864 | SCREW | 2 |
| 22 | 95212 | STOP- Chain | 1 |
| 23 | 82537 | SCREW | 1 |
| 24 | 01170 | PLATE- Guide bar (outer) | 1 |
| 25 | 82513 | SCREW | 1 |
| 26 | 98278 | PLATE- Guide bar (inner) | 1 |
| 27 | 65112-1 | PIN- Guide bar adjusting | 1 |
| 28 | 03139 | SCREW- Guide bar adjusting | 1 |
| 29 | 01809-A | PLATE- Guide bar stud | 1 |
| 30 | 03132 | BOLT- Guide bar | 2 |
| 31 | Q1183 | BULB- Primer bulb | 1 |
| 32 | 01527-A | RQD- Choke | 1 |
| 33 | 01802 | SWITCH | 1 |
| 34 | 69889 | BOOT- Throttle rod | 1 |
| 35 | 64862 | GROMMET | 1 |
| 36 | 01169 | PANEL- Control | 1 |
| 37 | ●A-02581-A | COVER- Cylinder | 1 |
| 38 | ● 01173 | SCREEN- Air inlet | 1 |
| 39 | ● 01181 | FOAM- Adhesive | 1 |
| 40 | ● 01179-A | PLUG- Idle speed | 1 |
| 41 | 01172 | GROMMET- Hi/Lo | 1 |
| 42 | 95792 | SCREW- Rd. hd. | 3 |
| 43 | 02506 | LABEL- Warning | 1 |
| 44 | 83056 | WASHER- Lock | 1 |
| 45 | 00206-C | HOUSING- Drive side | 1 |

- Assembly or part of an assembly.
- Ensemble ou partie d'un ensemble.
- Satz oder Teil eines Satzes.
- Complesso o parte di un complesso.
- Conjunto o parte de un conjunto.

FIGURE 3
FIGURE 3
ABBILDUNG 3
FIGURA 3
FIGURA 3

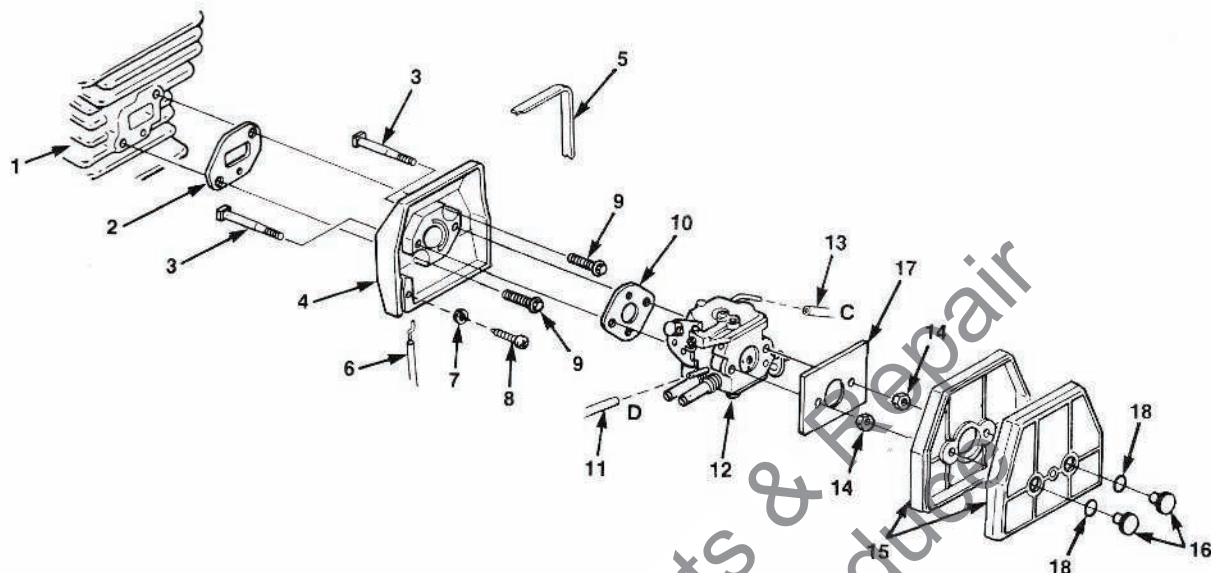


| No. No. Nr. No. Nº | Part No. No. de pièce Best.—Nr. No. de. Pieza Pezzo N° | Description | Qty. Qté. Menge Cant. Qtà. |
|--------------------------------|--------------------------------------------------------------------|-----------------------|----------------------------------------|
| 1 | A-02790 | HANDLE BAR | 1 |
| 2 | 96620 | SCREW | 1 |
| 3 | 01168 | SPRING | 2 |
| 4 | 01812-A | RETAINER- Spring | 2 |
| 5 | 01813 | SLEEVE | 2 |
| 6 | 00207-1A | HOUSING- Starter side | 1 |
| 7 | 95671 | PIN- Throttle lock | 1 |
| 8 | 95020 | SPRING- Compression | 1 |
| 9 | 58409 | RING- Retaining | 1 |
| 10 | 00210-A | COVER- Rear handle | 1 |
| 11 | 00997-A | CABLE- Throttle | 1 |
| 12 | 00211-A | TRIGGER- Throttle | 1 |
| 13 | 02508 | ISOLATOR | 2 |
| 14 | 01177-A | SPRING- Throttle | 1 |
| 15 | 93385-A | LOCK- Throttle | 1 |
| 16 | 70253 | PIN- Dowel | 1 |
| 17 | 82513 | SCREW | 1 |
| 18 | 84123 | WASHER | 1 |
| 19 | 00206-C | HOUSING- Drive side | 1 |
| 20 | 02561 | LABLE- Kick back | 1 |
| 21 | 01180 | RETAINER | 1 |
| 22 | ●A-98298-A | BRAKE BAND ASSEMBLY | 1 |

| No. No. Nr. No. Nº | Part No. No. de pièce Best.—Nr. No. de. Pieza Pezzo N° | Description | Qty. Qté. Menge Cant. Qtà. |
|--------------------------------|--------------------------------------------------------------------|----------------------|----------------------------------------|
| 23 | ● 98447-A | PIN | 1 |
| 24 | A-00226 | COVER- Drive case | 1 |
| 25 | 81196 | NUT- Hex | 2 |
| 26 | 82546 | SCREW- (8-16 x 5/8") | 2 |
| 27 | 98456 | PIN | 1 |
| 28 | 00890 | SPRING- Compression | 1 |
| 29 | A-00888-A | ADJUSTER- Brake | 1 |
| 30 | A-98317-A | BRAKE LATCH ASSEMBLY | 1 |
| 31 | 98308 | SPRING- Coil | 1 |
| 32 | 98461 | SCREW- Shoulder | 1 |
| 33 | 01820 | RING- Retainer | 1 |
| 34 | 98422-A | PIN | 1 |
| 35 | 98457 | NUT- (M5) | 1 |
| 36 | 83203 | WASHER | 1 |
| 37 | 00805-A | GUARD- Hand | 1 |
| 38 | 02661 | DECAL- Safety | 1 |
| 39 | 82218 | SCREW | 1 |
| 40 | 02743 | DEFLECTOR- Heat | 1 |
| 41 | 81261 | NUT- Hex | 2 |
| 42 | 84008 | WASHER | 1 |
| 43 | 00209-B | HANDLE | 1 |
| 44 | 82546 | SCREW- (8-16 x 5/8") | 5 |

- Assembly or part of an assembly.
- Ensemble ou partie d'un ensemble.
- Satz oder Teil eines Satzes.
- Complesso o parte di un complesso.
- Conjunto o parte de un conjunto.

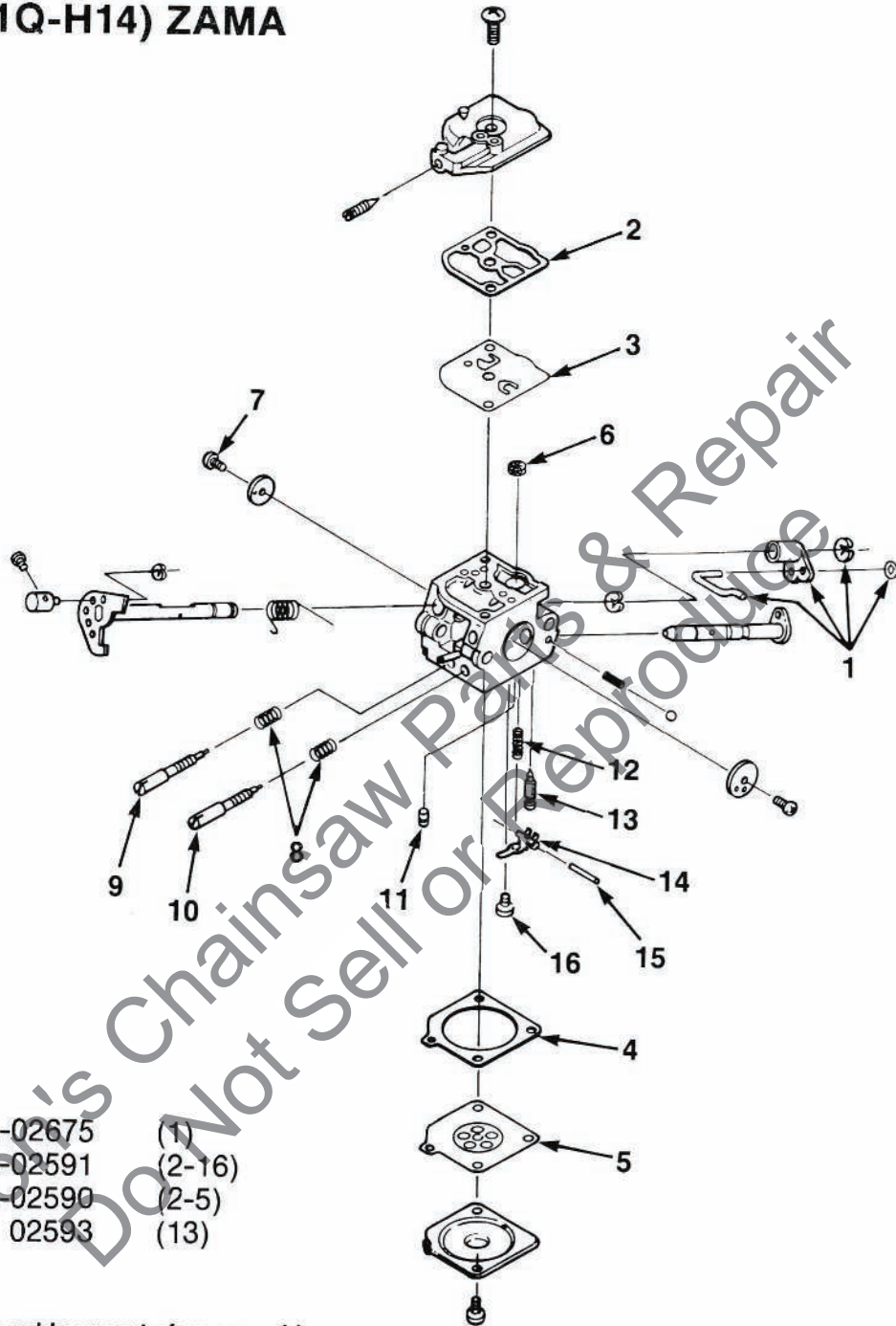
FIGURE 4
FIGURE 4
ABBILDUNG 4
FIGURA 4
FIGURA 4



| No. No. Nr. No. Nº | Part No. No. de pièce Besf. - Nr. No. de. Pieza Pezzo N° | Description | Qty. Qté. Menge Cant. Qtà. |
|--------------------------------|----------------------------------------------------------------------|-----------------------------|----------------------------------------|
| 1 | A-02577-B | CYLINDER | 1 |
| 2 | 01029 | GASKET- Carburetor spacer | 1 |
| 3 | 00905-A | SCREW- Carburetor spacer | 1 |
| 4 | ●A-02583 | SPACER- Carburetor | 1 |
| 5 | ●01823 | FOAM- Adhesive | 1 |
| 6 | 00997-B | CABLE- Throttle | 1 |
| 7 | 84123 | WASHER | 1 |
| 8 | 82513 | SCREW- Thread forming | 1 |
| 9 | 82430 | SCREW- Mach. hex hd. | 2 |
| 10 | 98339 | GASKET- Carburetor | 1 |
| 11 | 93112-19 | TUBING- Rubber | 1 |
| 12 | A-03032 | CARBURETOR- Walbro (WT-185) | 1 |
| | A-02585 | CARBURETOR- Zama (CZQ-H14) | 1 |
| 13 | 70310-36 | TUBING- Rubber | 1 |
| 14 | 81009 | NUT- Hex (8/32) | 2 |
| 15 | A-02582 | AIR FILTER ASSEMBLY | 1 |
| 16 | 01178 | NUT- Retainer | 2 |
| 17 | 02695 | RETAINER- Air filter | 1 |
| 18 | 02718 | O-RING | 2 |

- Assembly or part of an assembly.
- Ensemble ou partie d'un ensemble.
- Satz oder Teil eines Satzes.
- Complesso o parte di un complesso.
- Conjunto o parte de un conjunto.

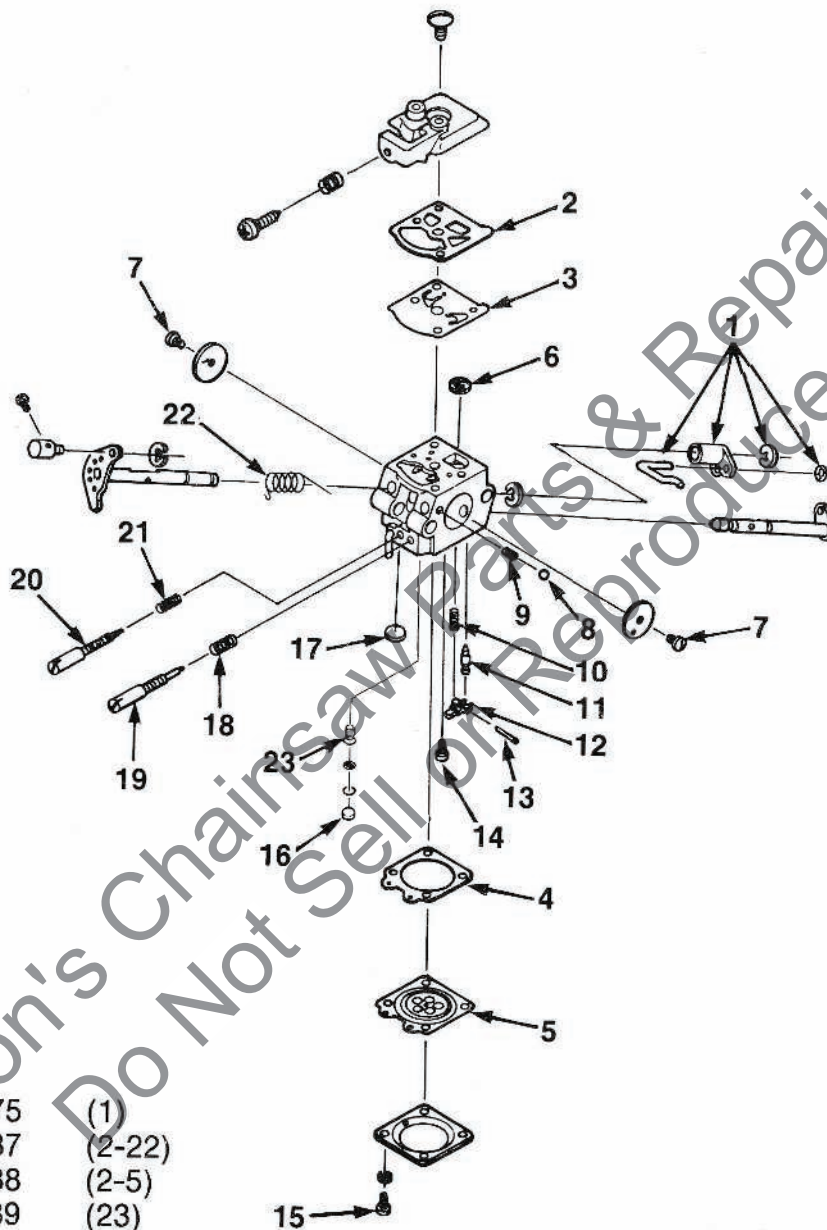
● A-02585 (C1Q-H14) ZAMA



- A-02675 (1)
- A-02591 (2-16)
- A-02590 (2-5)
- 02593 (13)

- Assembly or part of an assembly.
- Ensemble ou partie d'un ensemble.
- Satz oder Teil eines Satzes.
- Complesso o parte di un complesso.
- Conjunto o parte de un conjunto.

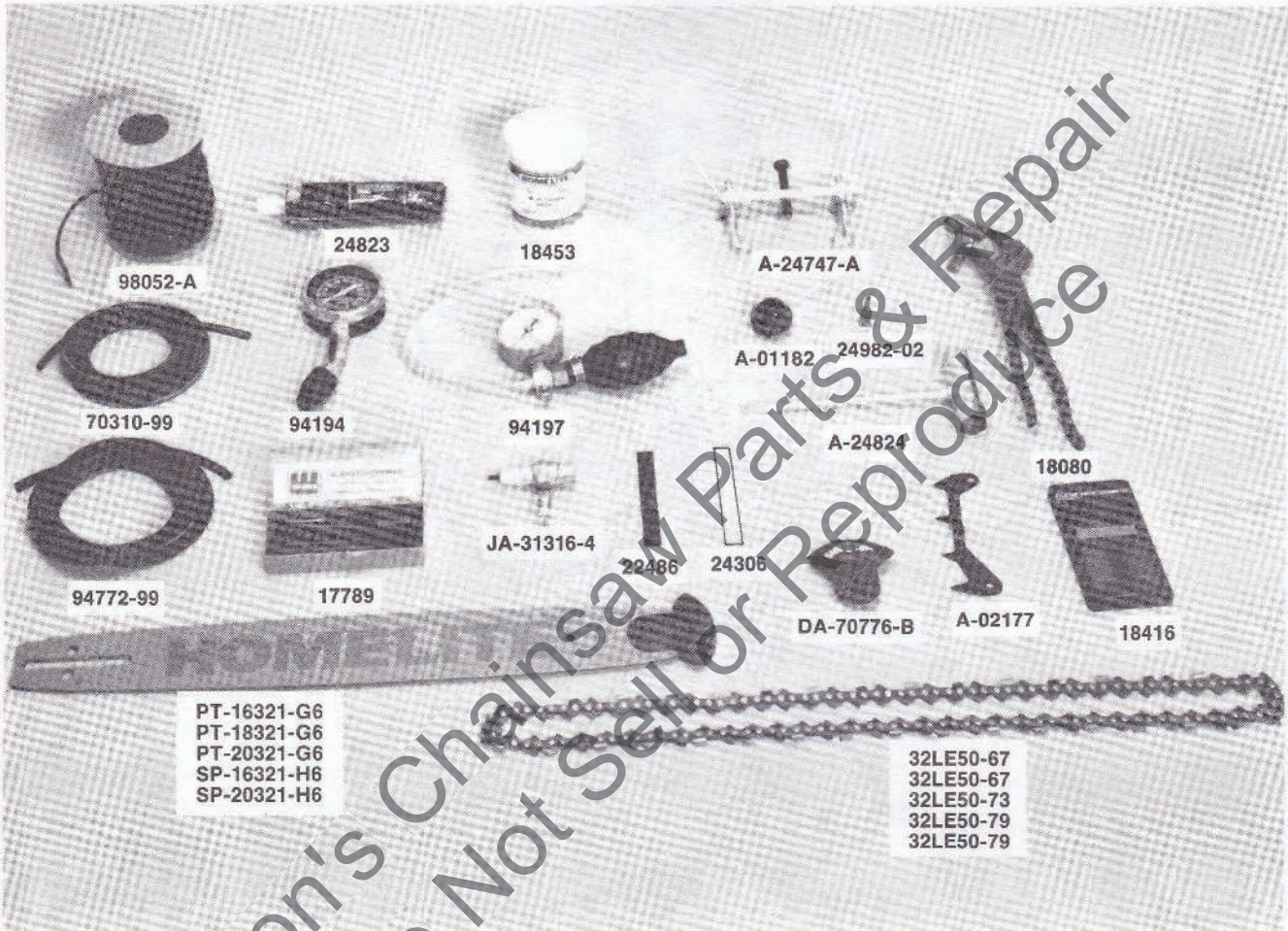
● A-02584 (WT-185) WALBRO



- A-02675 (1)
- A-02587 (2-22)
- A-02588 (2-5)
- 02589 (23)

- Assembly or part of an assembly.
- Ensemble ou partie d'un ensemble.
- Satz oder Teil eines Satzes.
- Complesso o parte di un complesso.
- Conjunto o parte de un conjunto.

ACCESSORIES
 ACCESSOIRES
 ZUBEHÖR
 ACCESORIOS
 ACCESSORI



| | | | |
|-----------------------------------------------------------------------------------------------------------------------------------------------------------------------------------------------------------------------------------------------------------------------------------------------------------------------------------------------|-------------|------------------------------------------------------------------------------------------------------------------------------------------------------------------------------------------|------------|
| BUMPER SPIKE KIT Jeu de crampon d'amortisseur Stoßstangen-Spikesatz Kit della punta del paraurti Juego de punta del parachoques | A-02177 | COMPRESSION TESTER Appareil d'essai de compression Verdichtungs-Prüfgerät Tester a compressione Medidor de compresión | 94194 |
| RUBBER TUBING (10') Tubes en caoutchouc (3,05 m) Gummrohr (3,05 m) Dotto di gomma (3,05 m) Tubo de caucho (3,05 m) | 94772-99 | CARBURETOR REPAIR TOOL Outil de réparation de carburateur Vergaser-Reparaturwerkzeug Attrezzo di riparazione del carburatore Herramienta de reparación del carburador | 17789 |
| GREASE- Multi-Purpose (Sprocket bearing-PT guide bar) Graisse universelle (Palier de pignon-PT - lame-guide) Mehrzweck-Schmiermittel (Kettenradlager - PT - Führungsschiene) Grasso, multiuso (Cuscinetto della ruota dentata - PT - barra di guida) Grasa de uso general (Cojinete de la rueda dentada - PT - barra guía) | 18453 | SHIM (.0125") Cale (0,31mm) Distanzstück (0,31mm) Zeppa (0,31mm) Calce (0,31mm) | 24306 |
| STARTING ROPE (250 ft. Reel) Cordon de lanceur (75 m bobine) Startersseil (76 m Spule) Corda d'avviamento (bobina da 76 m) Cuerda de arranque (carrete de 76 m) | 98052 | DIGITAL TACHOMETER Compte-tours numérique Digital-Drehzahlmesser Tachometro digitale Tacometro digital | 18416 |
| SAFE•T•TIP® SAFE•T•TIP® SAFE•T•TIP® SAFE•T•TIP® SAFE•T•TIP® | DA-70776-B | CLUTCH ASSEMBLY TOOL Outil de montage d'embrayage Kupplungszusammenbau-Werkzeug Attrezzo del gruppo frizione Herramienta de armado del embrague | 18080 |
| RUBBER TUBING (10') Tubes en caoutchouc (3,05 m) Gummrohr (3,05 m) Dotto di gomma (3,05 m) Tubo de caucho (3,05 m) | 70310-99 | SEALANT SILICON Matériau d'étanchéité au silicone Silicon-Dichtungsmasse Sigillo al silicone Sellador de silicio | 24823 |
| GUIDE BAR, (power tip) (16") Lame guide, (Extrémité motrice) (40,64cm) Führungsstange, (Antriebsspitze) (40,64cm) Lama, (Punta di potenza) (40,64cm) Barra guía, (Punta de potencia) (40,64cm) | PT-16321-G6 | WRENCH (combination) Clé combiné Schraubenschlüssel Kombination Chiave combinata Llave combinada | A-24824 |
| GUIDE BAR (power tip) (18") Lame guide, (Extrémité motrice) (45,72cm) Führungsstange, (Antriebsspitze) (45,72cm) Lama, (Punta di potenza) (45,72cm) Barra guía, (Punta de potencia) (45,72cm) | PT-18321-G6 | PULLER- Magneto Rotor Extracteur, rotor magnito Abziehwerkzeug-Magnetrotor Rotore d'estrazione a magnete Extractor rotor de magneto | A-24747-A |
| GUIDE BAR, (power tip) (20") Lame guide, (Extrémité motrice) (50,80cm) Führungsstange, (Antriebsspitze) (50,80cm) Lama, (Punta di potenza) (50,80cm) Barra guía, (Punta de potencia) (50,80cm) | PT-20321-G6 | T-25 TORX DRIVE BIT Foret torx T-25 T-25 Torx-Antriebsbit Punta Torx Drive T-25 Broca de empuje T-25 Torx | 24982-02 |
| GUIDE BAR, (sprocket tip) (16") Lame guide, (Extrémité à pignon) (40,64cm) Führungsstange, (Kettenradspitze) (40,64cm) Lama, (Punta dentata) (40,64cm) Barra guía, (Punta de rueda dentada) (40,64cm) | SP-16321-H6 | SHIM (0.015" AIR GAP) Cale (écart de 0,38 mm) Distanzscheibe (0,38 mm Luftspalt) Spessore (spinterometro 0,38 mm) Suplemento (espacio de 0,38 mm) | 22486 |
| GUIDE BAR, (sprocket tip) (20") Lame guide, (Extrémité à pignon) (50,80cm) Führungsstange, (Kettenradspitze) (50,80cm) Lama, (Punta dentata) (50,80cm) Barra guía, (Punta de rueda dentada) (50,80cm) | SP-20321-H6 | TESTER (Spark Plug) Appareil de contrôle (Bougie) Prüfgerät (Zündkerze) Tester (candela) Probador de bujía | JA-31316-4 |
| CHAIN (32-LE50-67) (16") Chaîne (32-LE50-67) (40,64cm) Kette (32-LE50-79) (40,64cm) Catena (32-LE50-79) (40,64cm) Cadena (32-LE50-79) (40,64cm) | | CLUTCH SPANNER Clé à embrayage Kupplungs-Gabelschlüssel Chiave della frizione Llave para embrague | A-01182 |
| CHAIN (32-LE50-73) (18") Chaîne (32-LE50-79) (45,72cm) Kette (32-LE50-73) (45,72cm) Catena (32-LE50-73) (45,72cm) Cadena (32-LE50-73) (45,72cm) | | | |
| CHAIN (32-LE50-79) (20") Chaîne (32-LE50-73) (50,80cm) Kette (32-LE50-67) (50,80cm) Catena (32-LE50-67) (50,80cm) Cadena (32-LE50-67) (50,80cm) | | | |

**SYMBOL DEFINITIONS
DEFINITIONS DES SYMBOLES
ERKLÄRUNG DER WARNSYMBOL
SIGNIFICADO DE LOS SIMBOLOS
DEFINIZIONI DEI SIMBOLI**



**DANGER!
DANGER!
GEFAHR!
¡PELIGRO!
PERICOLO!**

**READ YOUR PRODUCT LITERATURE.
LIRE LES PUBLICATIONS SUR LE PRODUIT.
DIE MASCHINEN-BESCHREIBUNGEN UND ANLEITUNGEN LESEN.
LEER EL MANUAL DEL PRODUCTO.
LEGGERE LA DOCUMENTAZIONE DEL PRODOTTO.**

**DANGER- KEEP HANDS AND FEET AWAY.
DANGER- NE PAS APPROCHER LES MAINS NI LES PIEDS.
GEFAHR- HÄNDE UND FÜSSE FERNHALTEN
PELIGRO- ALEJAR LAS MANOS Y LOS PIES.
PERICLO- TENERE LONTANI MANI E PIEDI.**

CUSTOMER ASSISTANCE

FOR THE LOCATION OF YOUR NEAREST HOMELITE SERVICING DEALER IN THE UNITED STATES, PUERTO RICO, AND THE VIRGIN ISLANDS.

CALL: 1-800-242-4672

NOTE: DEALER INFORMATION, TECHNICAL ADVICE AND PRODUCT INFORMATION CAN BE OBTAINED AT THIS NUMBER.

HEADQUARTERS

**HOMELITE DIVISION OF TEXTRON INC.
P.O. BOX 7047
CHARLOTTE, N.C. 28241**

OVERSEAS OFFICES

ENGLAND

**HOMELITE
DIVISION OF TEXTRON LIMITED
UNIT 22
Hither Green Trading Estate
Clevedon (Nr. Bristol)
Avon, BS 21 6XU England**

FRANCE

**HOMELITE TEXTRON
UNE DIVISION DE TEXTRON
S.A.R.L.
Z.I. du Vert-Galant
Rue du Chateau/Rue de la Garenne
95310 Saint-Quen-L'Aumone
France**

NETHERLANDS

**HOMELITE TEXTRON
DIVISION OF TEXTRON ATLANTIC
(HDQS. — Europe, Africa and Middle East)
Haverstraat 24
2153 GB Nieuw Vennep
The Netherlands**

AUSTRALIA

**HOMELITE DIVISION OF TEXTRON PACIFIC LIMITED
HEADQUARTERS
22 Terra - Cotta Drive
Blackburn, 3130
Victoria, Australia**

CANADIAN OFFICES

HOMELITE

**DIVISION OF TEXTRON CANADA LIMITED
1850 55th Avenue
Lachine, Quebec, Canada
H8T 3J5**

212-214 590 Ebury Place
Annacis Island
Delta, British Columbia
V3M 6K7

16520-111th Avenue
Edmonton, Alberta
T5M 3V8

595 Canarctic Drive
Downsview (Toronto)
Ontario, Canada
M3J 2P9

691 Malenfant Blvd.
Dieppe Industrial Park
Dieppe, New Brunswick
E1A 5T8

HOMELITE TEXTRON

Homelite Division of Textron Inc.